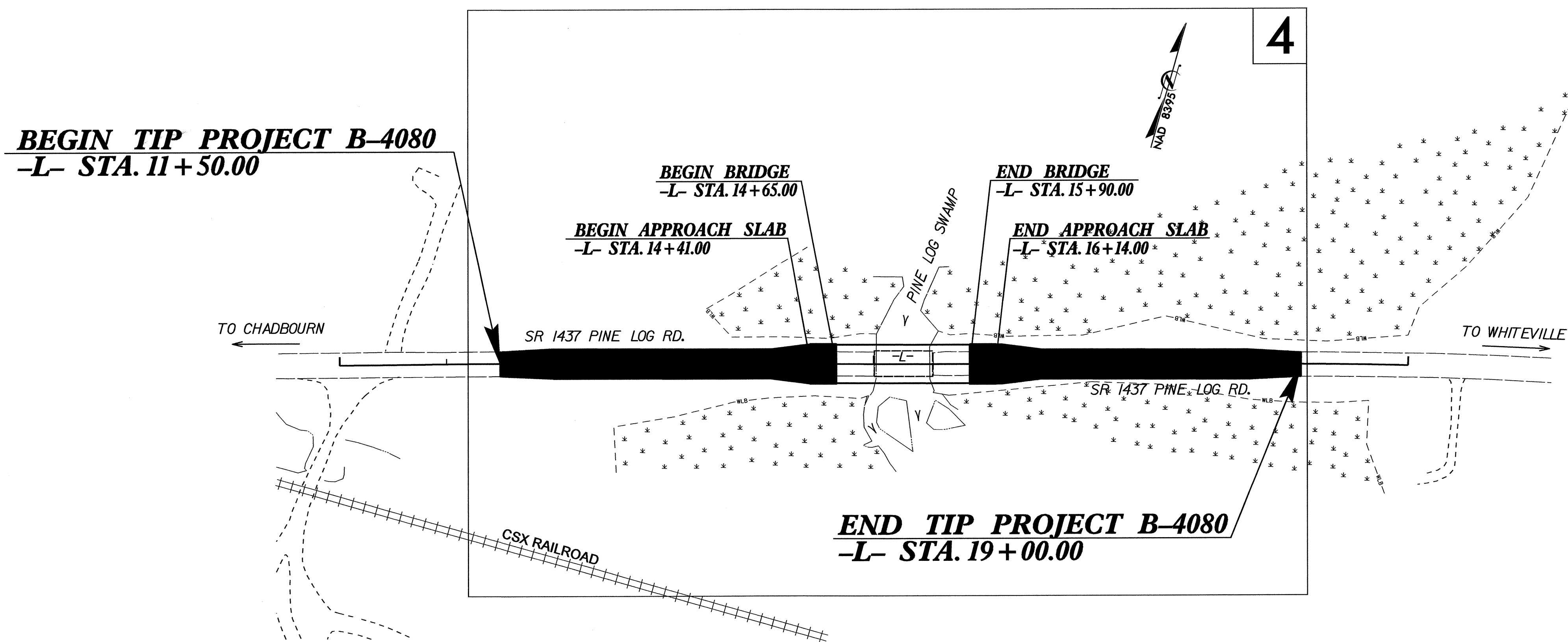


**TIP PROJECT: B-4080**

STATE OF NORTH CAROLINA  
 DIVISION OF HIGHWAYS  
 PLAN FOR PROPOSED  
 HIGHWAY EROSION CONTROL  
**COLUMBUS COUNTY**

**LOCATION: BRIDGE NO. 148 OVER PINE LOG SWAMP ON SR 1437**  
**TYPE OF WORK: GRADING, DRAINAGE, PAVING AND STRUCTURE**

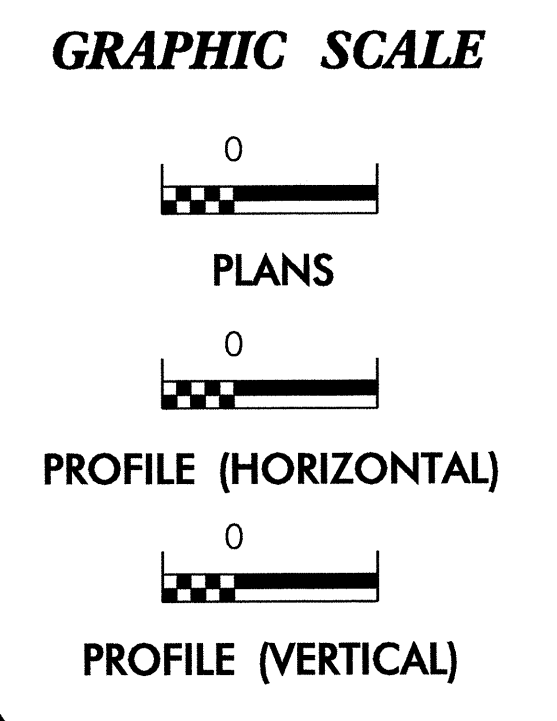


STATE	STATE PROJECT REFERENCE NO.	SHEET NO.	TOTAL SHEETS
N.C.	B-4080	EC-1	
STATE PROJ. NO.	F.A. PROJ. NO.	DESCRIPTION	

**EROSION AND SEDIMENT CONTROL MEASURES**

Std. #	Description	Symbol
1630.03	Temporary Silt Ditch	TD
1630.05	Temporary Diversion	TD
1605.01	Temporary Silt Fence	III III III
1606.01	Special Sediment Control Fence	△△△△△△△△
1622.01	Temporary Berms and Slope Drains	— T —
1630.01	Riser Basin	⊙
1630.01	Silt Basin Type B	▨
1633.01	Temporary Rock Silt Check Type-A	▨
1633.01	Temporary Rock Silt Check Type-B	▶
1633.01	Wattle	⌒
1634.01	Temporary Rock Sediment Dam Type-A	▨
1634.02	Temporary Rock Sediment Dam Type-B	⌒
1635.01	Rock Pipe Inlet Sediment Trap Type-A	⌒
1635.02	Rock Pipe Inlet Sediment Trap Type-B	⌒
1630.04	Stilling Basin	▭
1630.06	Special Stilling Basin	▭
Rock Inlet Sediment Trap:		
1632.01	Type A	A
1632.02	Type B	B
1632.03	Type C	C
	Skimmer Basin	▭
	Tiered Skimmer Basin	▭
	Infiltration Basin	▭

**THIS PROJECT CONTAINS  
 EROSION CONTROL PLANS  
 FOR CLEARING AND  
 GRUBBING PHASE OF  
 CONSTRUCTION.**



ROADSIDE ENVIRONMENTAL UNIT  
 DIVISION OF HIGHWAYS  
 STATE OF NORTH CAROLINA

Prepared In the Office of:  
**ROADSIDE ENVIRONMENTAL UNIT**  
 1 South Wilmington St.  
 Raleigh, NC 27611  
**2006 STANDARD SPECIFICATIONS**

Roadway Standard Drawings

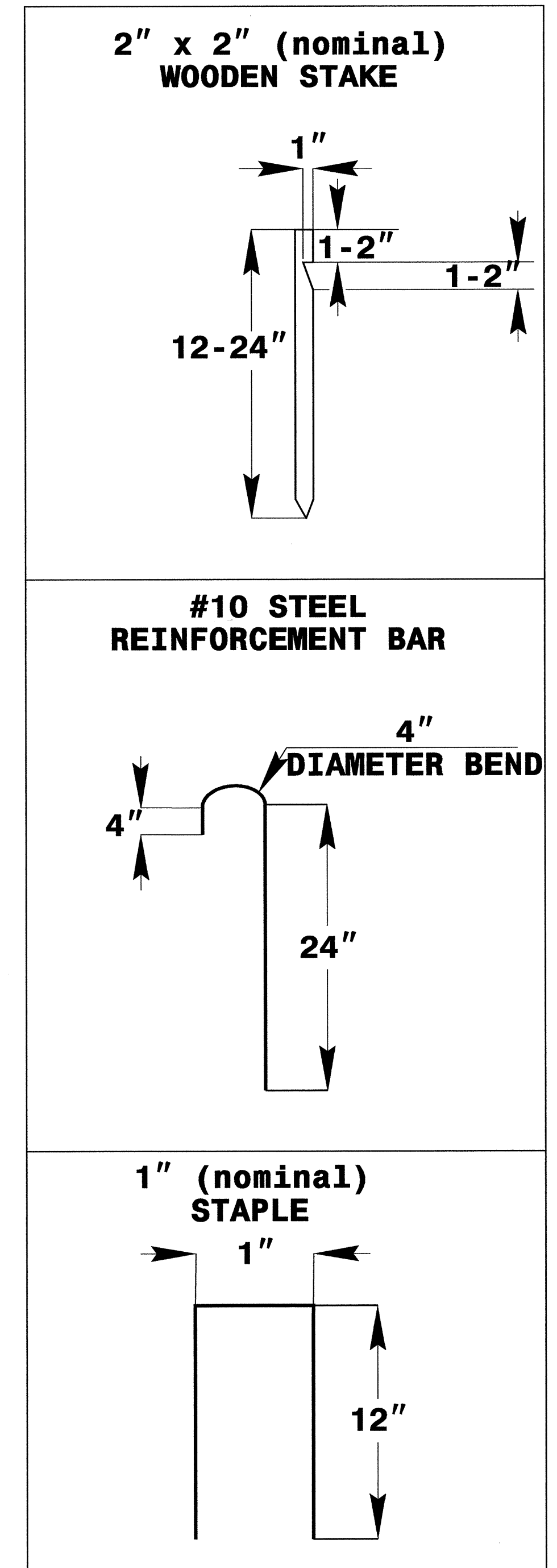
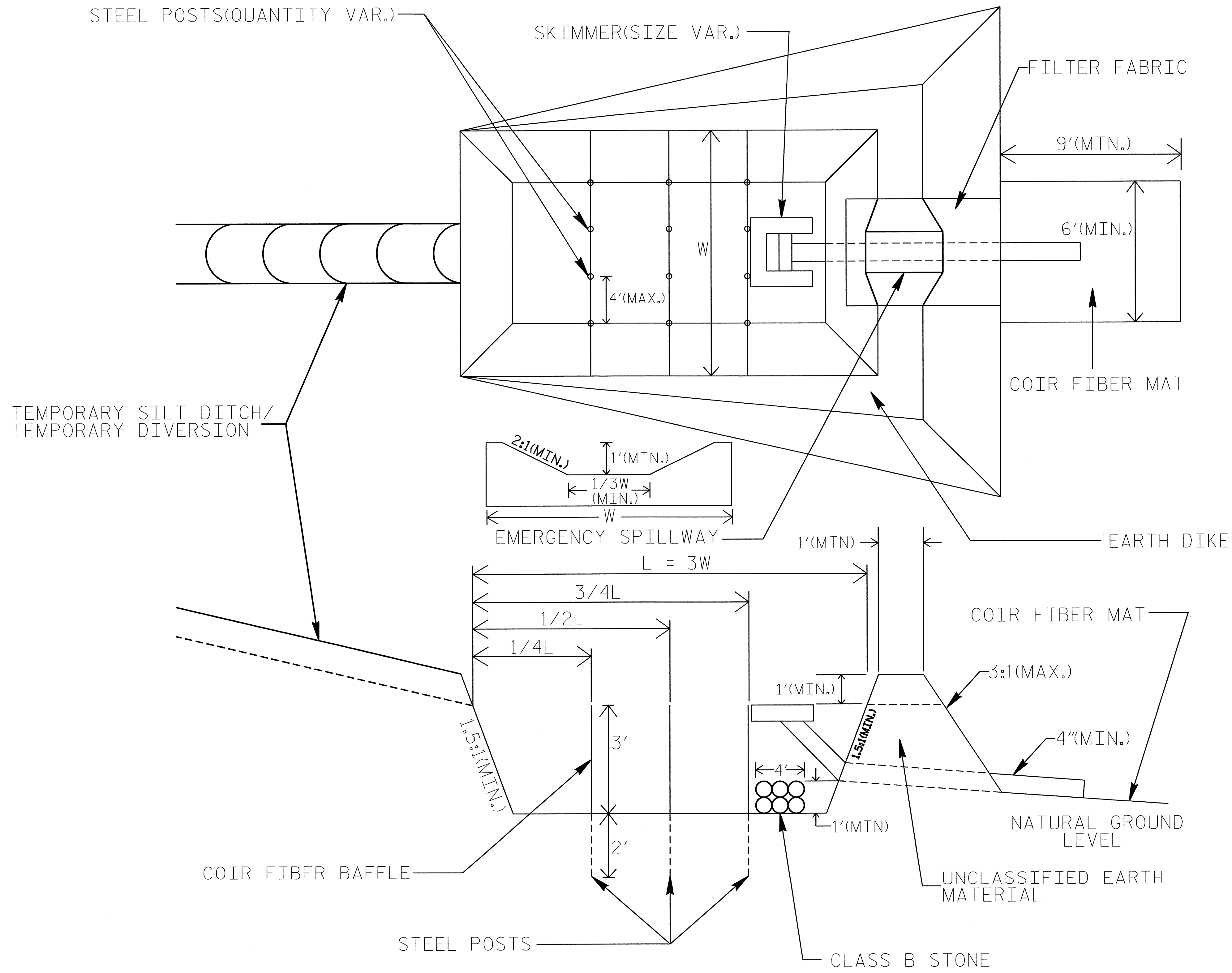
The following roadway english standards as appear in "Roadway Standard Drawings"- Roadway Design Unit - N. C. Department of Transportation - Raleigh, N. C., dated July 18, 2006 and the latest revision thereto are applicable to this project and by reference hereby are considered a part of these plans.

1605.01 Temporary Silt Fence	1632.03 Rock Inlet Sediment Trap Type C
1606.01 Special Sediment Control Fence	1633.01 Temporary Rock Silt Check Type A
1607.01 Gravel Construction Entrance	
1622.01 Temporary Berms and Slope Drains	
1630.03 Temporary Silt Ditch	

23-JUN-2008 14:22  
 o:\transportation\eng\p1\1606B-rdjt.tch.dgn

# SKIMMER BASIN WITH BAFFLES DETAIL

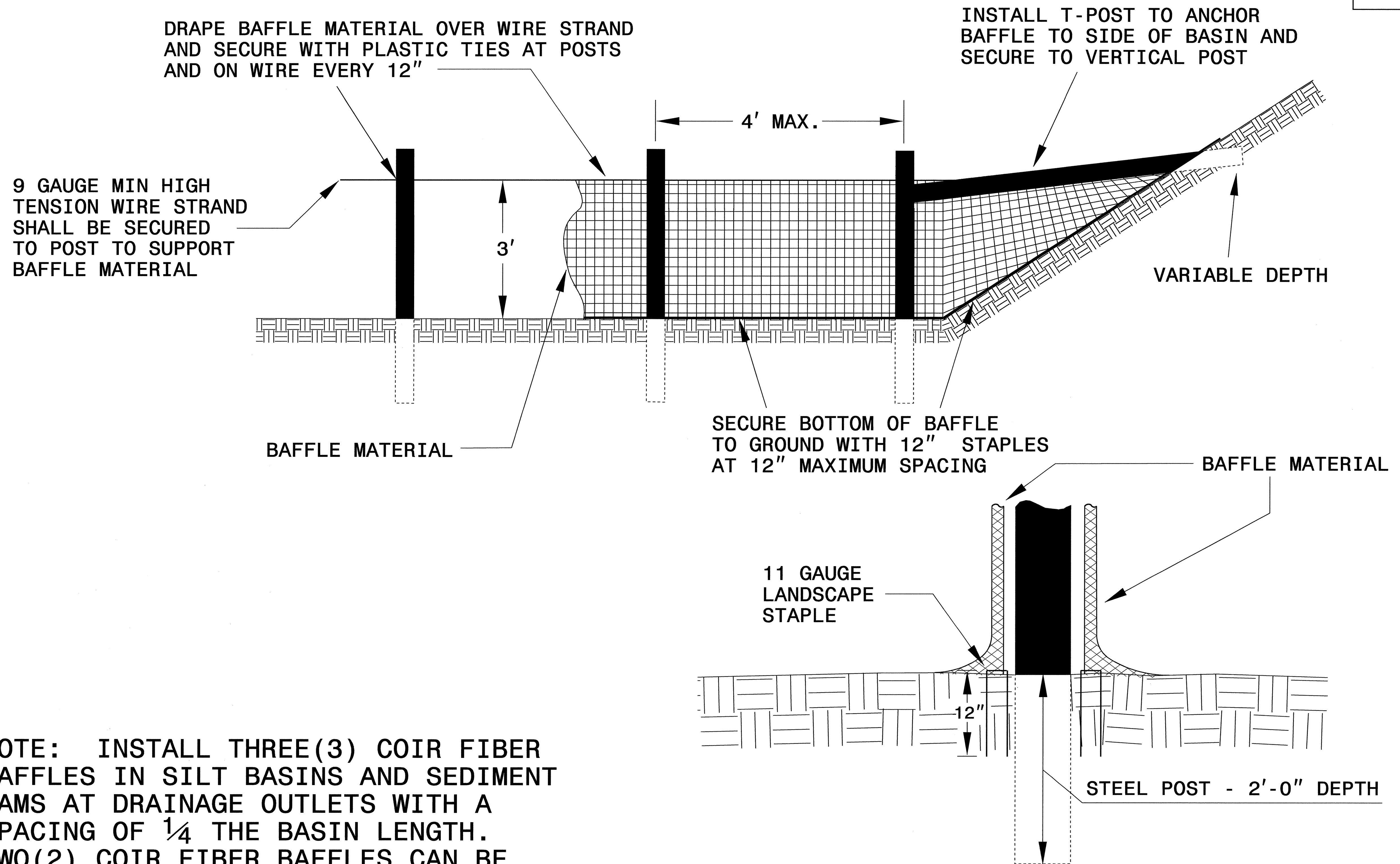
PROJECT REFERENCE NO. B-4080	SHEET NO. EC-2
RW SHEET NO.	
ROADWAY DESIGN ENGINEER	HYDRAULICS ENGINEER



- NOTES:**
1. SEED AND PLACE MATTING FOR EROSION CONTROL ON SIDESLOPES.
  2. LIMIT EARTH DIKE HEIGHT TO 5 FT.

PROJECT REFERENCE NO. B-4080	SHEET NO. EC-2A
R/W SHEET NO.	
ROADWAY DESIGN ENGINEER	HYDRAULICS ENGINEER

# COIR FIBER BAFFLE DETAIL

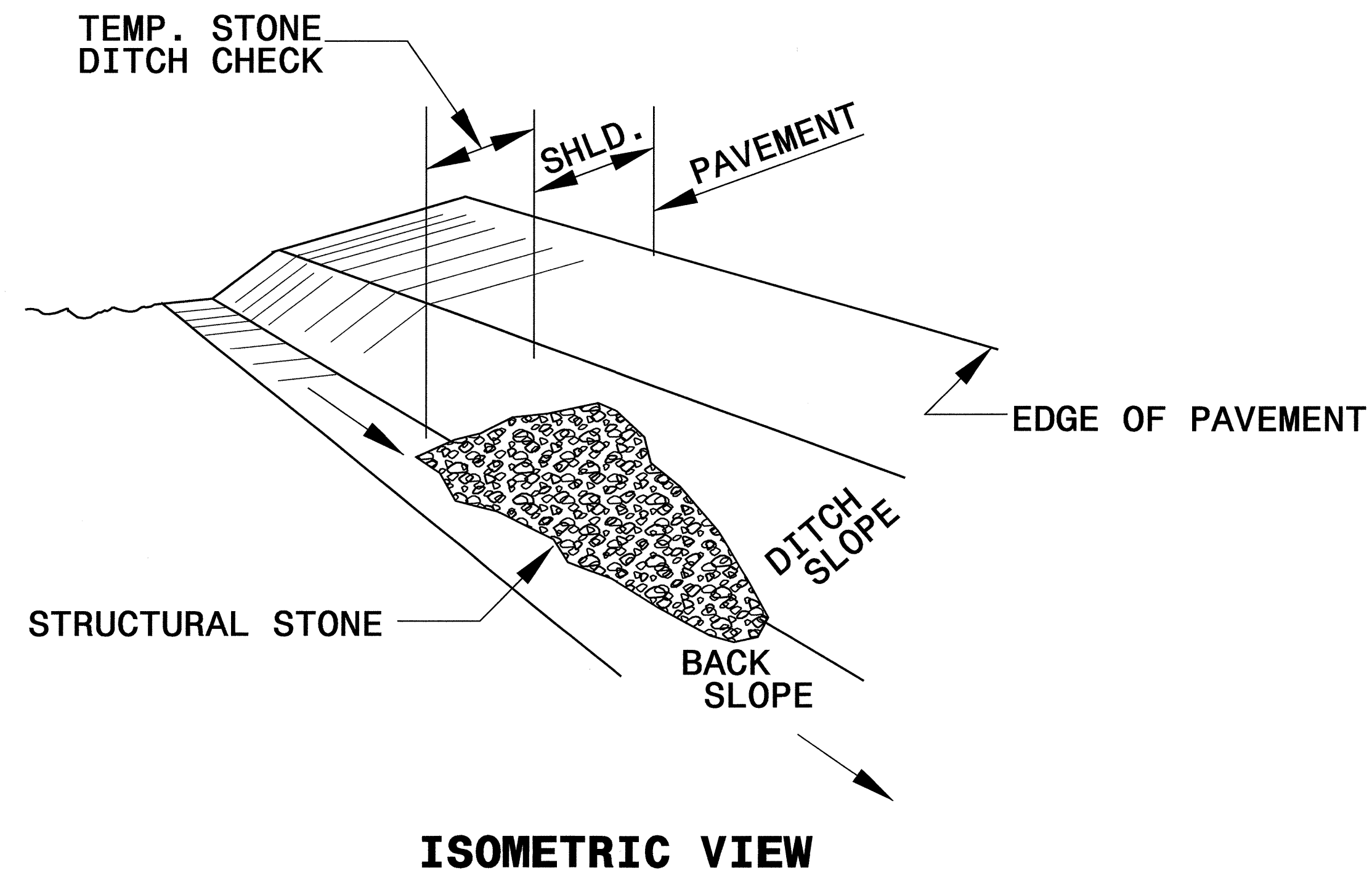


NOTE: INSTALL THREE(3) COIR FIBER BAFFLES IN SILT BASINS AND SEDIMENT DAMS AT DRAINAGE OUTLETS WITH A SPACING OF  $\frac{1}{4}$  THE BASIN LENGTH. TWO(2) COIR FIBER BAFFLES CAN BE INSTALLED IN SILT BASINS AND DAMS LESS THAN 20 FT. IN LENGTH WITH A SPACING OF  $\frac{1}{3}$  THE BASIN LENGTH.

BAFFLE MATERIAL SHALL BE SECURED TO THE BOTTOM AND SIDES OF BASIN USING 12" LANDSCAPE STAPLES

PROJECT REFERENCE NO. B-4080	SHEET NO. EC-2B
RW SHEET NO.	
ROADWAY DESIGN ENGINEER	HYDRAULICS ENGINEER

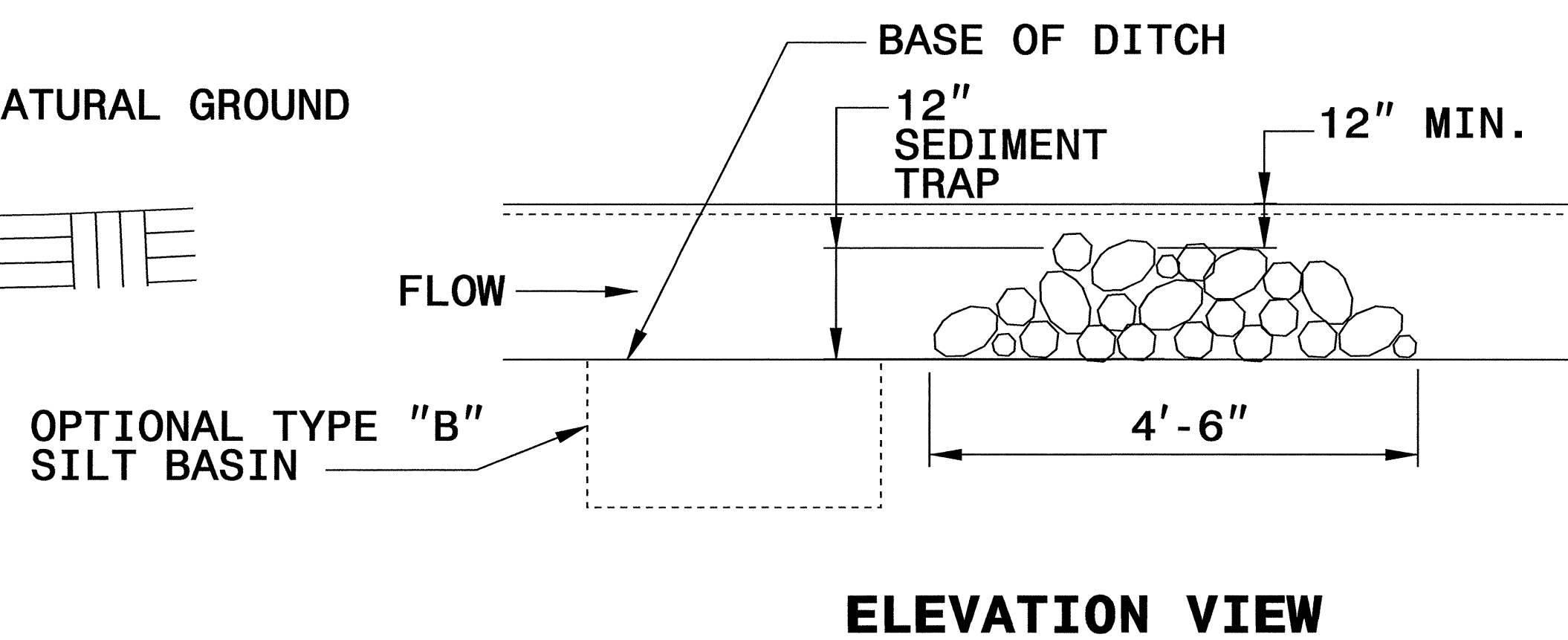
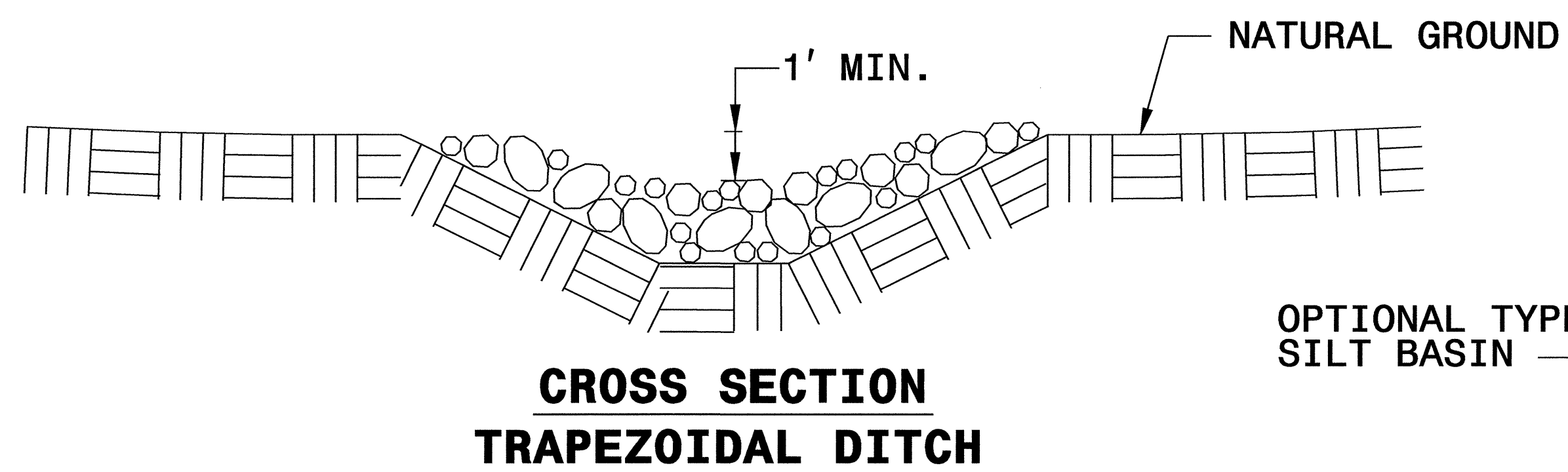
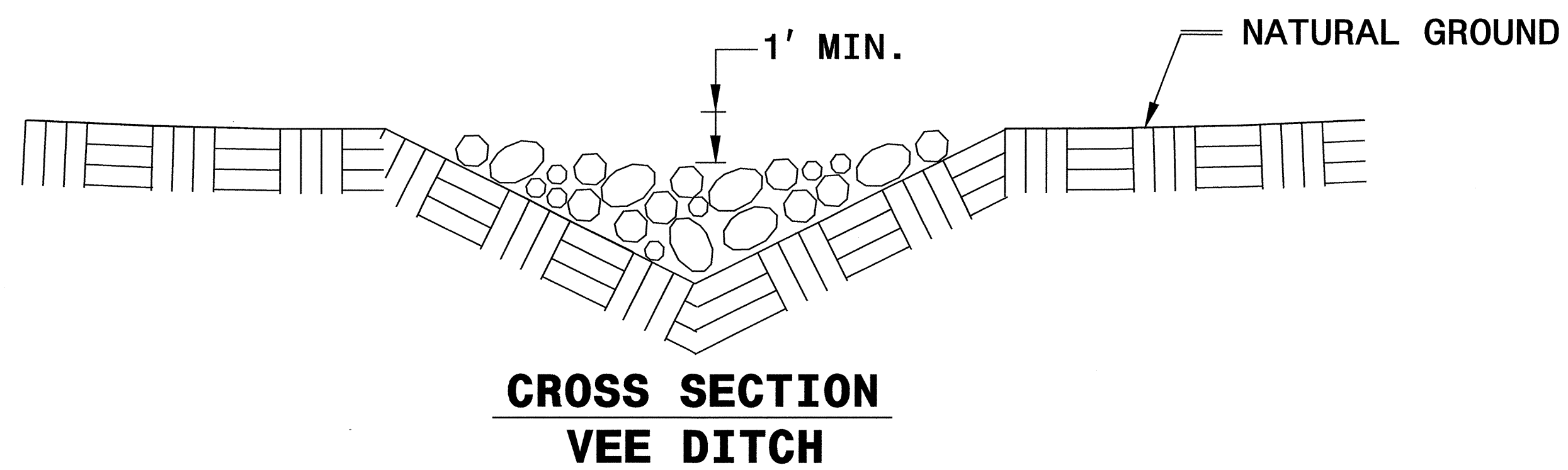
# TEMPORARY ROCK SILT CHECK TYPE 'B' DETAIL



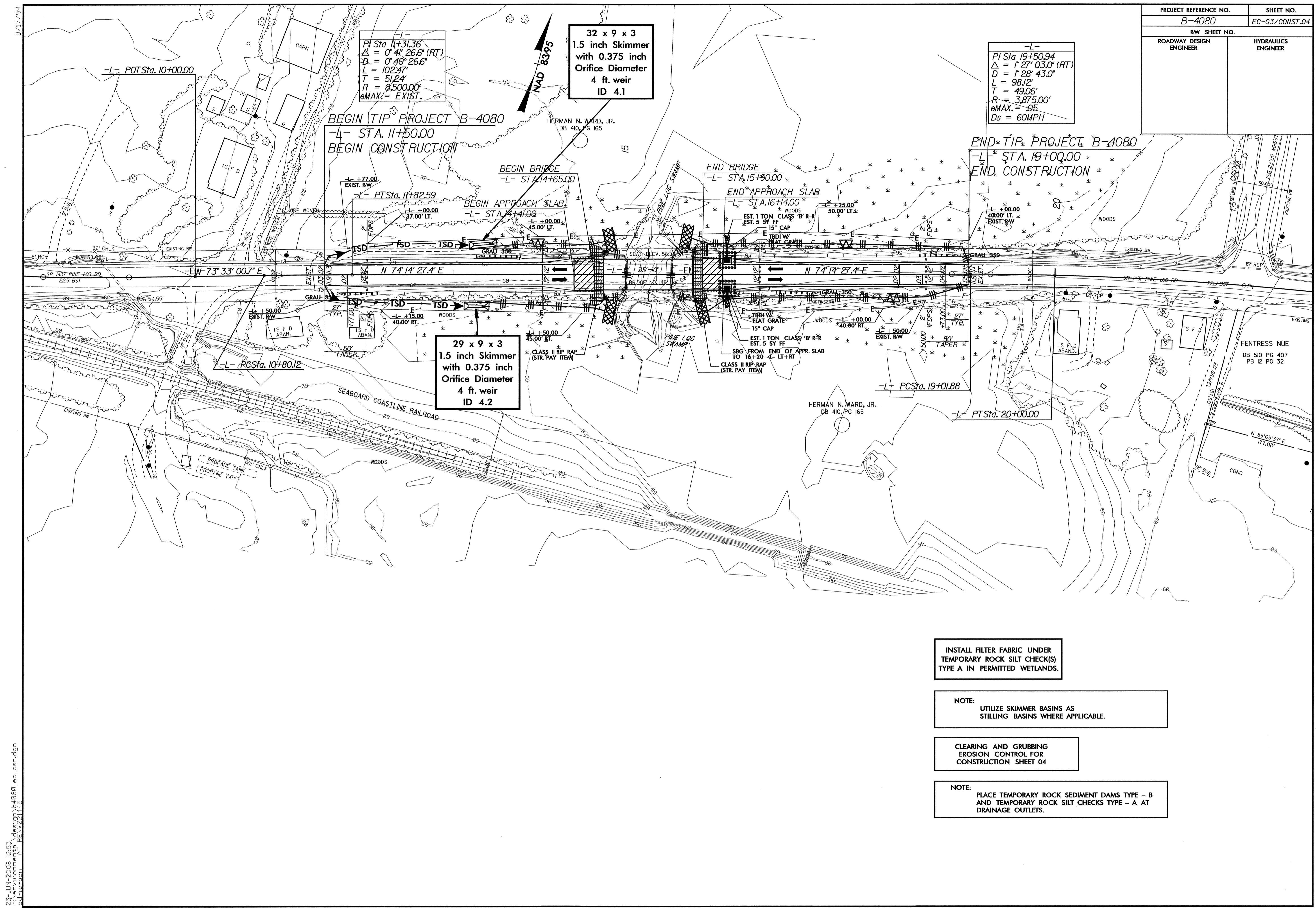
**NOTES:**

USE CLASS 'B' EROSION CONTROL STONE FOR STRUCTURAL STONE.

THE ENGINEER MAY DIRECT THE OPTION OF CLASS "A" STONE FOR SITES HAVING LESS THAN ONE (1) ACRE DRAINAGE AREA AND A DITCH GRADE LESS THAN 3%.



PROJECT REFERENCE NO.	SHEET NO.
B-4080	EC-03/CONST.04
RW SHEET NO.	
ROADWAY DESIGN ENGINEER	HYDRAULICS ENGINEER



-L-  
 PI Sta 11+31.36  
 $\Delta = 0' 41'' 26.6''$  (RT)  
 $D = 0' 40'' 26.6''$   
 $L = 102.47'$   
 $T = 51.24'$   
 $R = 8,500.00'$   
 $eMAX. = EXIST.$

**32 x 9 x 3**  
**1.5 inch Skimmer**  
**with 0.375 inch**  
**Orifice Diameter**  
**4 ft. weir**  
**ID 4.1**

-L-  
 PI Sta 19+50.94  
 $\Delta = 1' 27'' 03.0''$  (RT)  
 $D = 1' 28'' 43.0''$   
 $L = 98.12'$   
 $T = 49.06'$   
 $R = 3,875.00'$   
 $eMAX. = 95$   
 $Ds = 60MPH$

**29 x 9 x 3**  
**1.5 inch Skimmer**  
**with 0.375 inch**  
**Orifice Diameter**  
**4 ft. weir**  
**ID 4.2**

INSTALL FILTER FABRIC UNDER  
 TEMPORARY ROCK SILT CHECK(S)  
 TYPE A IN PERMITTED WETLANDS.

NOTE:  
 UTILIZE SKIMMER BASINS AS  
 STILLING BASINS WHERE APPLICABLE.

CLEARING AND GRUBBING  
 EROSION CONTROL FOR  
 CONSTRUCTION SHEET 04

NOTE:  
 PLACE TEMPORARY ROCK SEDIMENT DAMS TYPE - B  
 AND TEMPORARY ROCK SILT CHECKS TYPE - A AT  
 DRAINAGE OUTLETS.

8/17/99  
 23-JUN-2008 12:53  
 r:\environmental\design\4080\_ec.dsn.dgn  
 calculation - B1 - REV 2/14/03

8/17/99

PROJECT REFERENCE NO.	SHEET NO.
B-4080	EC-04/CONST.04
RW SHEET NO.	
ROADWAY DESIGN ENGINEER	HYDRAULICS ENGINEER

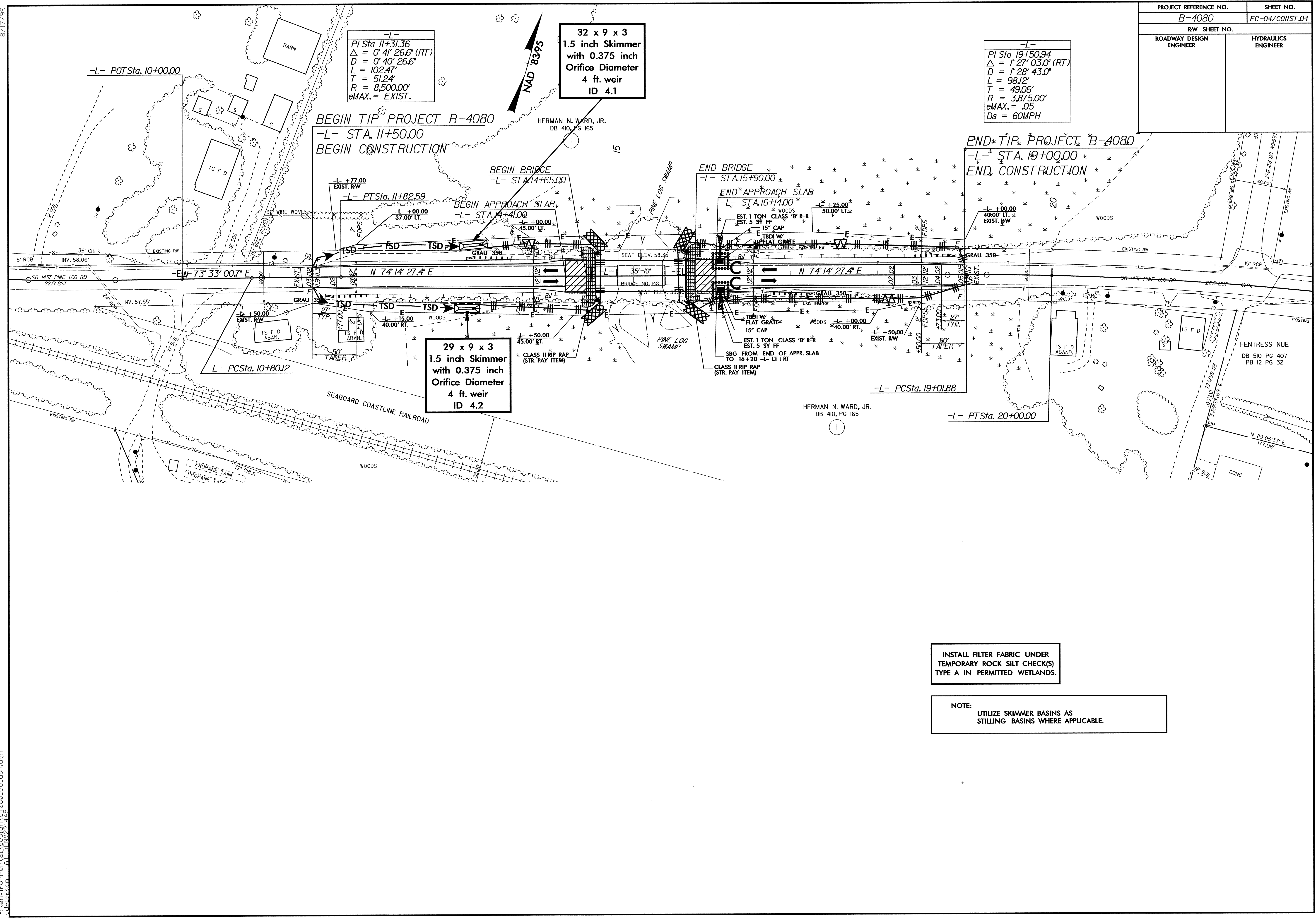
-L-  
 PI Sta 11+31.36  
 $\Delta = 0' 41" 26.6" (RT)$   
 $D = 0' 40" 26.6"$   
 $L = 102.47'$   
 $T = 51.24'$   
 $R = 8,500.00'$   
 $eMAX. = EXIST.$

32 x 9 x 3  
 1.5 inch Skimmer  
 with 0.375 inch  
 Orifice Diameter  
 4 ft. weir  
 ID 4.1

-L-  
 PI Sta 19+50.94  
 $\Delta = 1' 27" 03.0" (RT)$   
 $D = 1' 28" 43.0"$   
 $L = 98.12'$   
 $T = 49.06'$   
 $R = 3,875.00'$   
 $eMAX. = .05$   
 $Ds = 60MPH$

BEGIN TIP PROJECT B-4080  
 -L- STA. 11+50.00  
 BEGIN CONSTRUCTION

END TIP PROJECT B-4080  
 -L- STA. 19+00.00  
 END CONSTRUCTION



29 x 9 x 3  
 1.5 inch Skimmer  
 with 0.375 inch  
 Orifice Diameter  
 4 ft. weir  
 ID 4.2

INSTALL FILTER FABRIC UNDER  
 TEMPORARY ROCK SILT CHECK(S)  
 TYPE A IN PERMITTED WETLANDS.

NOTE:  
 UTILIZE SKIMMER BASINS AS  
 STILLING BASINS WHERE APPLICABLE.

23-JUN-2008 12:52  
 F:\environmental\design\b4080-ec-dsn.dgn  
 chiltonson AT PENN21446