

STATE OF NORTH CAROLINA
DIVISION OF HIGHWAYS

| | |
|-----------------------------|-----------|
| STATE PROJECT REFERENCE NO. | SHEET NO. |
| B-4671 | TCP-1 |

**PLAN FOR PROPOSED
TRAFFIC CONTROL, MARKING & DELINEATION**

WAYNE COUNTY

B-4671

ROADWAY STANDARD DRAWINGS

THE FOLLOWING ROADWAY STANDARDS AS APPEAR IN "ROADWAY STANDARD DRAWINGS"- PROJECT SERVICES UNIT-N.C. DEPARTMENT OF TRANSPORTATION-RALEIGH, N.C., DATED JULY 2006 ARE APPLICABLE TO THIS PROJECT AND BY REFERENCE HEREBY ARE CONSIDERED A PART OF THESE PLANS:

| STD. NO. | TITLE |
|----------|---|
| 1101.03 | TEMPORARY ROAD CLOSURES |
| 1101.05 | WORK ZONE VEHICLE ACCESSES |
| 1101.11 | TRAFFIC CONTROL DESIGN TABLES |
| 1110.01 | STATIONARY WORK ZONE SIGNS |
| 1145.01 | BARRICADES |
| 1205.01 | PAVEMENT MARKINGS - LINE TYPES & OFFSETS |
| 1205.02 | PAVEMENT MARKINGS - 2 LANE & MULTILANE ROADWAYS |
| 1205.12 | PAVEMENT MARKINGS - BRIDGES |
| 1250.01 | PAVEMENT MARKER SPACING |
| 1251.01 | RAISED PAVEMENT MARKERS (PERMANENT) |
| 1261.01 | GUARDRAIL & BARRIER DELINEATOR SPACING |
| 1261.02 | GUARDRAIL & BARRIER DELINEATOR TYPES |
| 1262.01 | GUARDRAIL END DELINEATION |

INDEX OF SHEETS

| SHEET NO. | TITLE |
|-----------|---|
| TCP-1 | LIST OF APPLICABLE ROADWAY STANDARD DRAWINGS, LEGEND, INDEX OF SHEETS, GENERAL NOTES, AND PHASING |
| TCP-2 | OFFSITE DETOUR AND FINAL PAVEMENT MARKING SCHEDULE |
| SD-1 | SIGN DESIGN - LANETOWN ROAD |

PHASING

PHASE I

- STEP 1. INSTALL ALL OFFSITE DETOUR SIGNING (SEE TCP-2). IF WORK IS NOT PURSUED WITHIN THREE DAYS OF SIGN INSTALLATION, THE SIGNS SHALL BE COVERED OR REMOVED IN A METHOD APPROVED BY THE ENGINEER ACCORDING TO STANDARD SPECS 1110.
- STEP 2. USING SIGNS AND BARRICADES AS SHOWN ON TCP-2, CLOSE SR 1532 (LANETOWN ROAD) FROM STA. 14+00+/- -L- TO STA. 21+00+/- -L-. MAINTAIN ACCESS TO ALL DRIVEWAYS WITHIN THE PROJECT LIMITS, AS DIRECTED BY THE ENGINEER.

PHASE II

- STEP 1. REMOVE EXISTING BRIDGE. CONSTRUCT NEW BRIDGE AND ROADWAY APPROACHES, DRAINAGE, GUARDRAIL, AND UP TO AND INCLUDING BASE COURSE AS FOLLOWS:
STA. 14+00+/- -L- TO STA. 21+00+/- -L-
CONSTRUCT DRIVEWAY FOR TOWN OF WILSON APPROX. 2000 FT. SOUTH OF PROPOSED BRIDGE (ON WEST SIDE)
- STEP 2. PAVE/WEDGE UP TO AND INCLUDING THE FINAL LAYER OF SURFACE COURSE AS FOLLOWS:
STA. 14+00+/- -L- TO STA. 21+00+/- -L-
PLACE FINAL PAVEMENT MARKINGS AND MARKERS, REFER TO RSD NOS. 1205.01, 1205.02, AND 1205.12, 1250.01, AND 1251.01 AS FOLLOWS:
STA. 14+00+/- -L- TO STA. 21+00+/- -L-
- STEP 3. REMOVE ALL TYPE III BARRICADES AND ALL DETOUR SIGNING. REOPEN SR 1532 (LANETOWN ROAD) TO A 2-LANE, 2-WAY TRAFFIC PATTERN.

GENERAL NOTES

THE FOLLOWING GENERAL NOTES APPLY AT ALL TIMES FOR THE DURATION OF THE CONSTRUCTION PROJECT, EXCEPT WHEN OTHERWISE NOTED IN THE PLAN, OR DIRECTED BY THE ENGINEER.

ADAPT THE TRAFFIC CONTROL PLANS, WHEN DIRECTED BY THE ENGINEER, TO MEET FIELD CONDITIONS TO PROVIDE SAFE AND EFFICIENT TRAFFIC MOVEMENT. CHANGES MAY BE REQUIRED WHEN PHYSICAL DIMENSIONS IN THE DETAIL DRAWINGS, STANDARD DETAILS AND ROADWAY DETAILS ARE NOT ATTAINABLE, OR RESULT IN DUPLICATE, OR UNDESIRABLE OVERLAPPING OF DEVICES. MODIFICATION MAY INCLUDE: MOVING, SUPPLEMENTING, COVERING OR REMOVAL OF DEVICES.

TRAFFIC PATTERN ALTERATIONS

- A) NOTIFY THE ENGINEER TWENTY ONE (21) CALENDAR DAYS PRIOR TO ANY TRAFFIC PATTERN ALTERATION.

SIGNING

- B) INSTALL ADVANCE WORK ZONE WARNING SIGNS WHEN WORK IS WITHIN 40 FT FROM THE EDGE OF TRAVEL LANE AND NO MORE THAN THREE (3) DAYS PRIOR TO THE BEGINNING OF CONSTRUCTION.

WHEN NO WORK IS BEING CONDUCTED FOR A PERIOD LONGER THAN ONE WEEK, REMOVE OR COVER ALL ADVANCE WORK ZONE WARNING SIGNS, AS DIRECTED BY THE ENGINEER, AT NO COST TO THE DEPARTMENT.

- C) PROVIDE PERMANENT SIGNING.
D) PROVIDE DETOUR SIGNING WITHIN AND OFF THE PROJECT LIMITS.
E) COVER OR REMOVE ALL DETOUR SIGNS WITHIN AND OFF THE PROJECT LIMITS WHEN A DETOUR IS NOT IN OPERATION.
F) ENSURE ALL NECESSARY SIGNING IS IN PLACE PRIOR TO ALTERING ANY TRAFFIC PATTERN.

TRAFFIC CONTROL DEVICES

- G) PLACE TYPE III BARRICADES, WITH "ROAD CLOSED" SIGN R11-2 ATTACHED, OF SUFFICIENT LENGTH TO CLOSE ENTIRE ROADWAY. STAGGER OR OVERLAP BARRICADES TO ALLOW FOR INGRESS OR EGRESS.

PAVEMENT MARKINGS AND MARKERS

- H) INSTALL PAVEMENT MARKINGS AND PAVEMENT MARKERS ON THE FINAL SURFACE AS FOLLOWS:

| ROAD NAME | MARKING | MARKER |
|---------------------|---------|------------------|
| -L- (LANETOWN ROAD) | PAINT | PERMANENT RAISED |

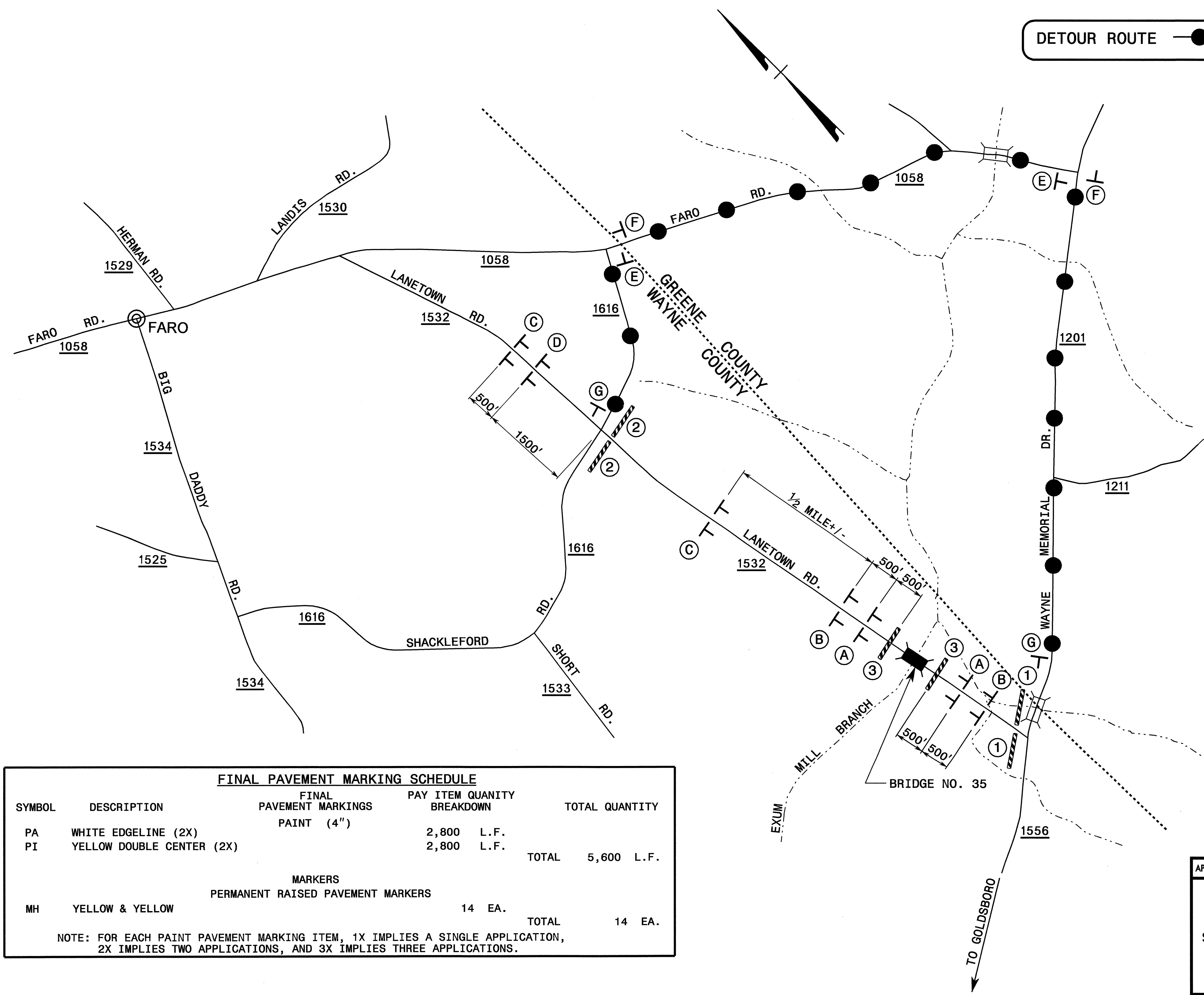
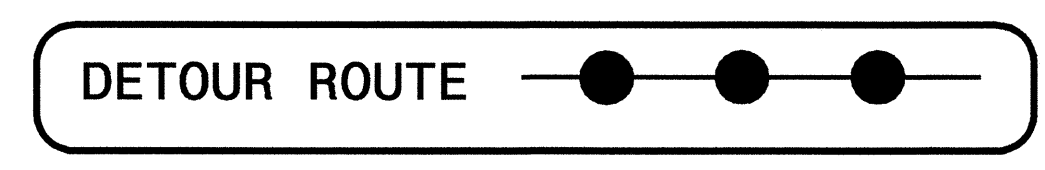
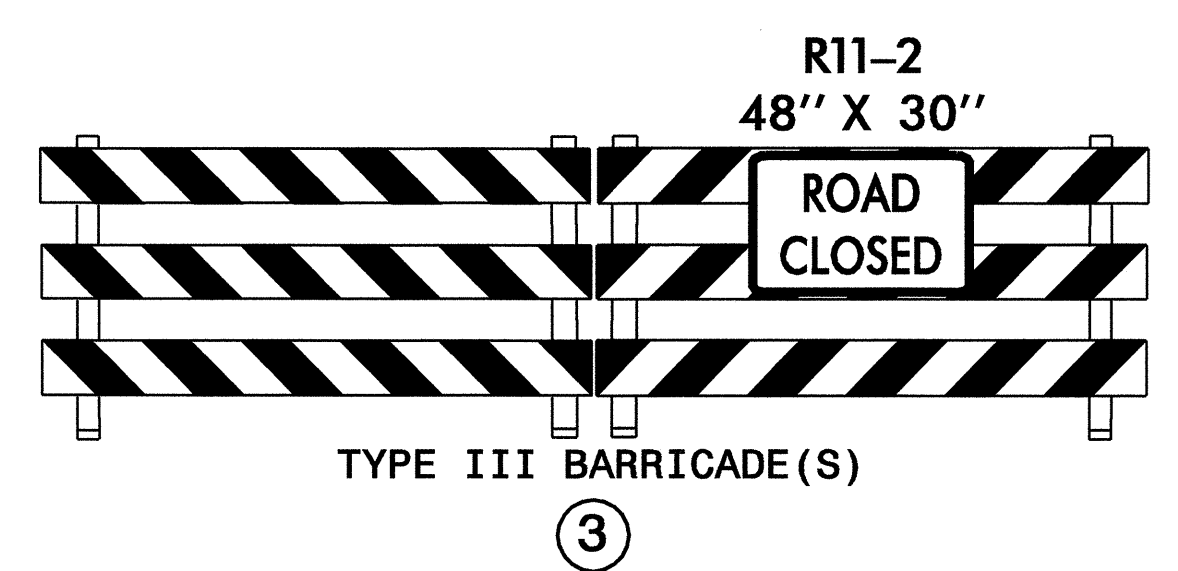
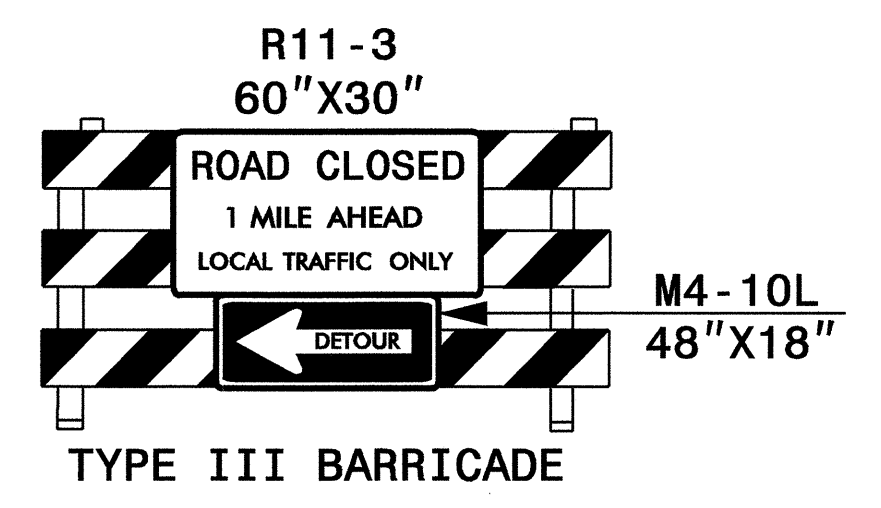
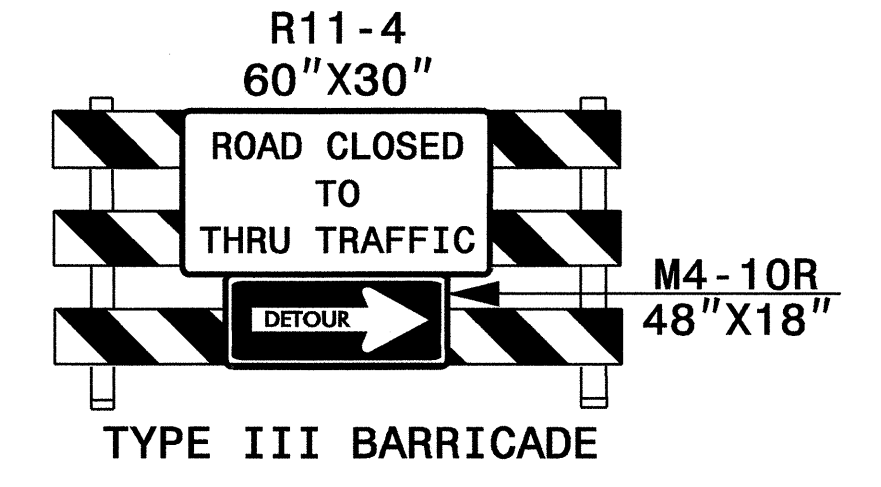
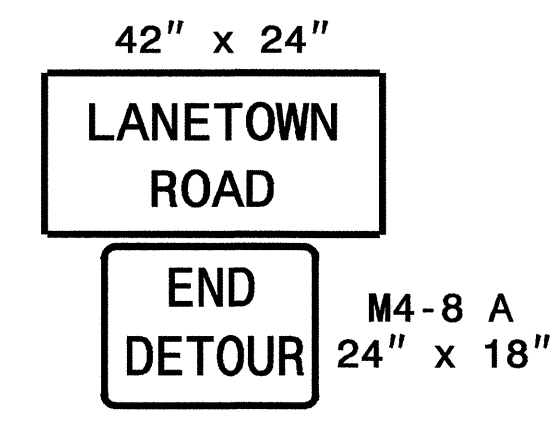
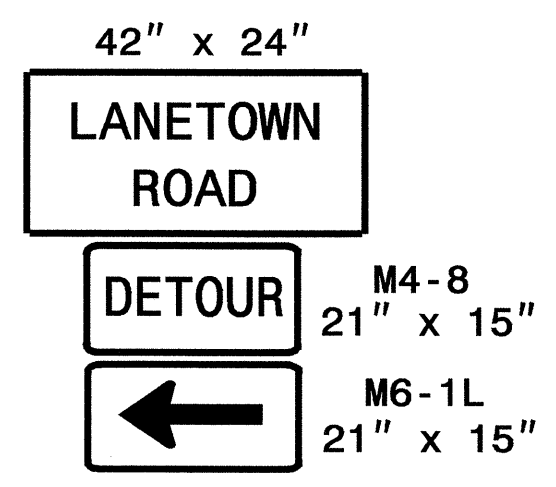
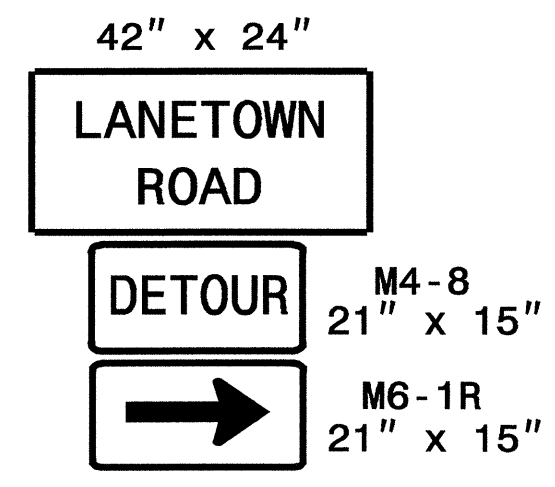
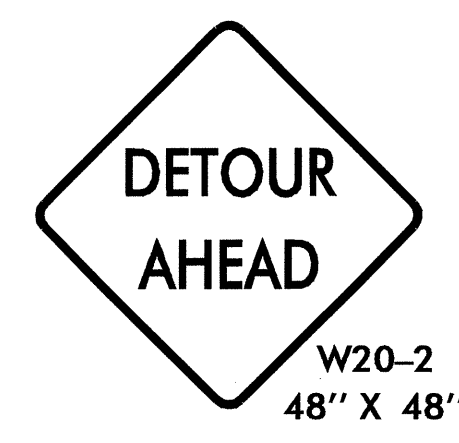
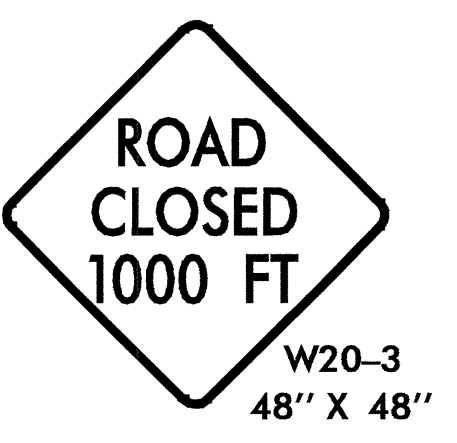
- I) PLACE TWO APPLICATIONS OF PAINT PAVEMENT MARKINGS ON THE FINAL WEARING SURFACE. PLACE THE SECOND APPLICATION OF PAINT UPON SUFFICIENT DRYING TIME OF THE FIRST.
- J) TIE PROPOSED PAVEMENT MARKING LINES TO EXISTING PAVEMENT MARKING LINES.

LEGEND

- GENERAL**
- DIRECTION OF TRAFFIC FLOW
 - NORTH ARROW
 - PROPOSED PVMT. EXIST. PVMT.
 - WORK AREA
 - REMOVAL OF EXISTING PAVEMENT
- TRAFFIC CONTROL DEVICES**
- TYPE I BARRICADE
 - TYPE II BARRICADE
 - TYPE III BARRICADE
 - CONE
 - DRUM SKINNY DRUM
 - FLASHING ARROW PANEL (TYPE C)
 - STATIONARY SIGN
 - PORTABLE SIGN
 - STATIONARY OR PORTABLE SIGN
 - WARNING FLAGS
 - CRASH CUSHION
 - CHANGEABLE MESSAGE SIGN
 - TRUCK MOUNTED IMPACT ATTENUATOR (TMIA)
 - POLICE
 - FLAGGER
- PAVEMENT MARKINGS**
- CRYSTAL/CRYSTAL PAVEMENT MARKER
 - YELLOW/YELLOW PAVEMENT MARKER
 - CRYSTAL/RED PAVEMENT MARKER
 - PAVEMENT MARKING SYMBOLS

| | |
|-----------------------------|---|
| APPROVED: DATE: 06-27-08 | PLAN PREPARED BY: N.C.D.O.T. WORK ZONE TRAFFIC CONTROL UNIT |
| SEAL | J. S. BOURNE, P.E. TRAFFIC CONTROL ENGINEER |
| | M. M. McDIARMID, P.E. TRAFFIC CONTROL PROJECT ENGINEER |
| | C. L. LANFORD, P.E. TRAFFIC CONTROL PROJECT DESIGN ENGINEER |
| | S. B. COATS TRAFFIC CONTROL DESIGN ENGINEER |

TIP PROJECT:



| FINAL PAVEMENT MARKING SCHEDULE | | | | |
|--|---------------------------|-----------------------------------|-----------------------------|----------------|
| SYMBOL | DESCRIPTION | FINAL PAVEMENT MARKINGS | PAY ITEM QUANTITY BREAKDOWN | TOTAL QUANTITY |
| PA | WHITE EDGELINE (2X) | PAINT (4") | 2,800 L.F. | 5,600 L.F. |
| PI | YELLOW DOUBLE CENTER (2X) | | 2,800 L.F. | |
| MARKERS | | | | |
| MH | YELLOW & YELLOW | PERMANENT RAISED PAVEMENT MARKERS | 14 EA. | 14 EA. |
| NOTE: FOR EACH PAINT PAVEMENT MARKING ITEM, 1X IMPLIES A SINGLE APPLICATION, 2X IMPLIES TWO APPLICATIONS, AND 3X IMPLIES THREE APPLICATIONS. | | | | |

APPROVED: *Chad L. Lanford* DATE: 06-27-08

SEAL

OFFSITE DETOUR AND FINAL PAVEMENT MARKING SCHEDULE

SCALE: 1"=1000'

DATE: 10-05-07

DWG. BY: SBC

DESIGN BY: SBC

REVIEWED BY: CLL

REVISIONS

SEAL

PROFESSIONAL ENGINEER

SEAL 030528

ENG. LINE 28

CHAD L. LANFORD

STATE OF NORTH CAROLINA

TRAFFIC CONTROL

27-JUN-2008 08:48
 X:\dotn\gtr\proj\traffic\trafficcontrol\top\B4671\TC_pnl_top02.dgn
 scotts AT WZTC237457