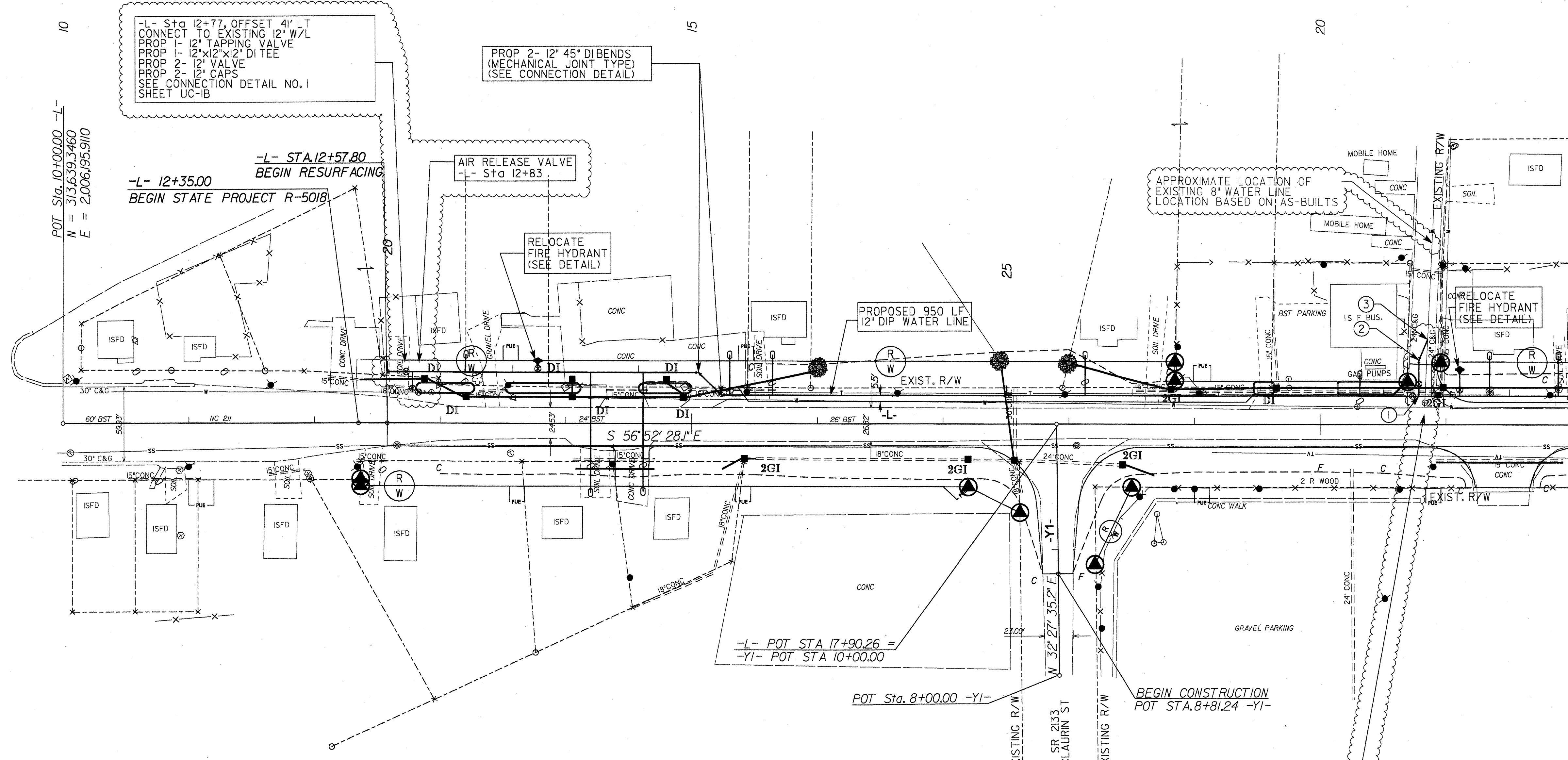


SCOTT RICHARD ARMSTRONG RESPONSIBLE FOR CLOUDED MATERIAL ONLY



-L- Sta 12+77, OFFSET 4' LT
CONNECT TO EXISTING 12\"/>

PROP 2- 12\"/>

AIR RELEASE VALVE
-L- Sta 12+83

RELOCATE
FIRE HYDRANT
(SEE DETAIL)

PROPOSED 950 LF
12\"/>

APPROXIMATE LOCATION OF
EXISTING 8\"/>

RELOCATE
FIRE HYDRANT
(SEE DETAIL)

-L- POT STA 17+90.26 =
-YI- POT STA 10+00.00

POT Sta. 8+00.00 -YI-

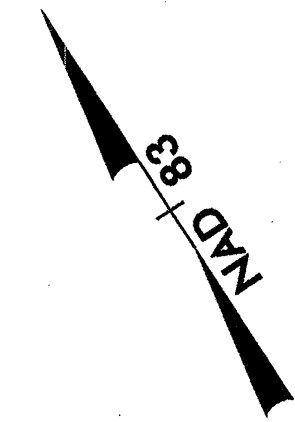
BEGIN CONSTRUCTION
POT STA. 8+81.24 -YI-

- ① -L- Sta 20+78, OFFSET 23' LT
PROP 12x12x12 DI TEE, (MECHANICAL TYPE)
2-12\"/>
- ② -L- Sta 20+78, OFFSET 5' RT
PROP 1-8\"/>
- ③ CONNECT TO EXISTING 8\"/>

MATCH LINE SEE SHEET UC-2 -L- STA. 22+00

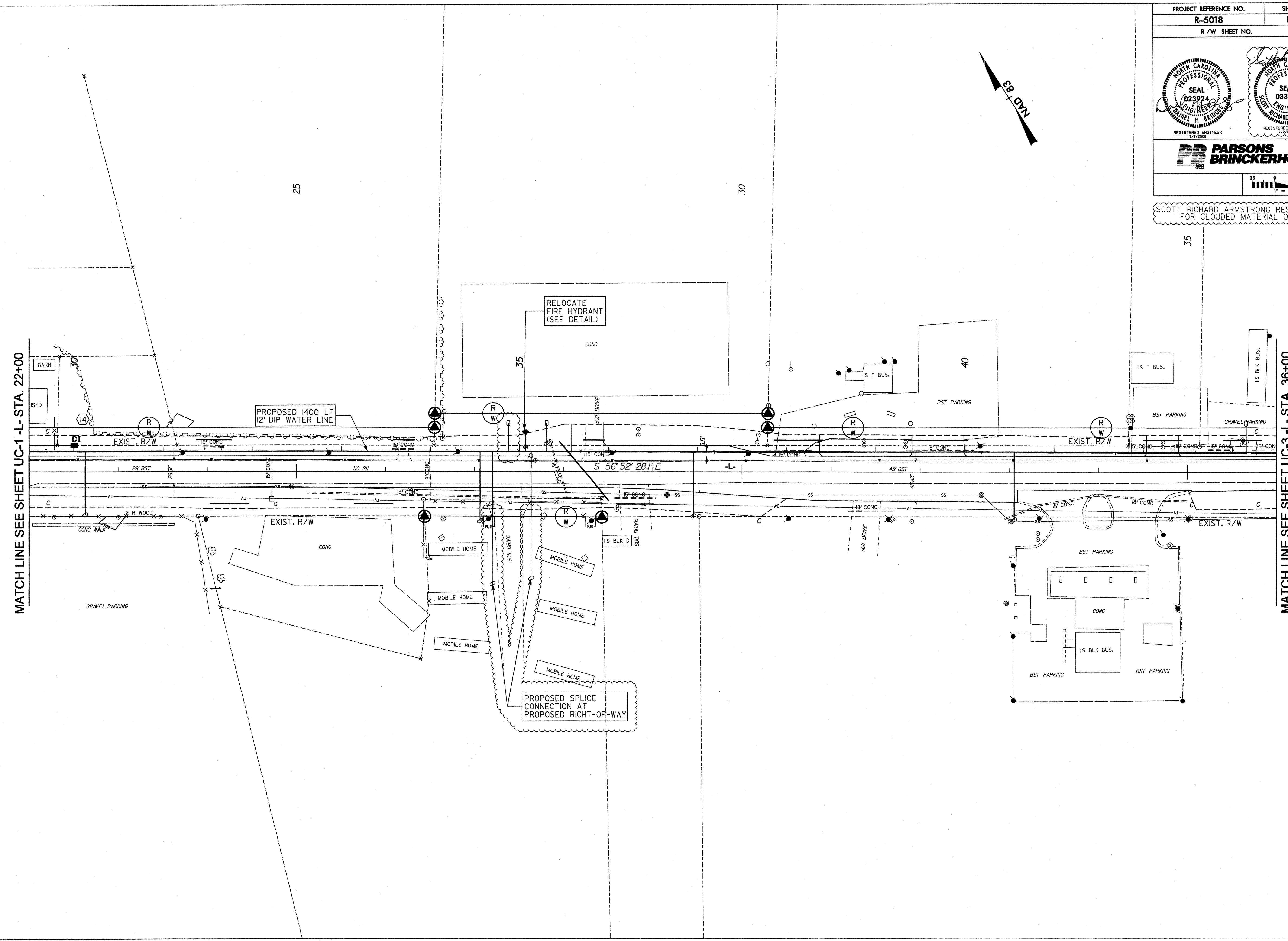
PROJECT REFERENCE NO. R-5018	SHEET NO. UC-2
R/W SHEET NO.	

SCOTT RICHARD ARMSTRONG RESPONSIBLE FOR CLOUDED MATERIAL ONLY



MATCH LINE SEE SHEET UC-1-L-STA. 22+00

MATCH LINE SEE SHEET UC-3-L-STA. 36+00



PROPOSED SPLICE CONNECTION AT PROPOSED RIGHT-OF-WAY

RELOCATE FIRE HYDRANT (SEE DETAIL)

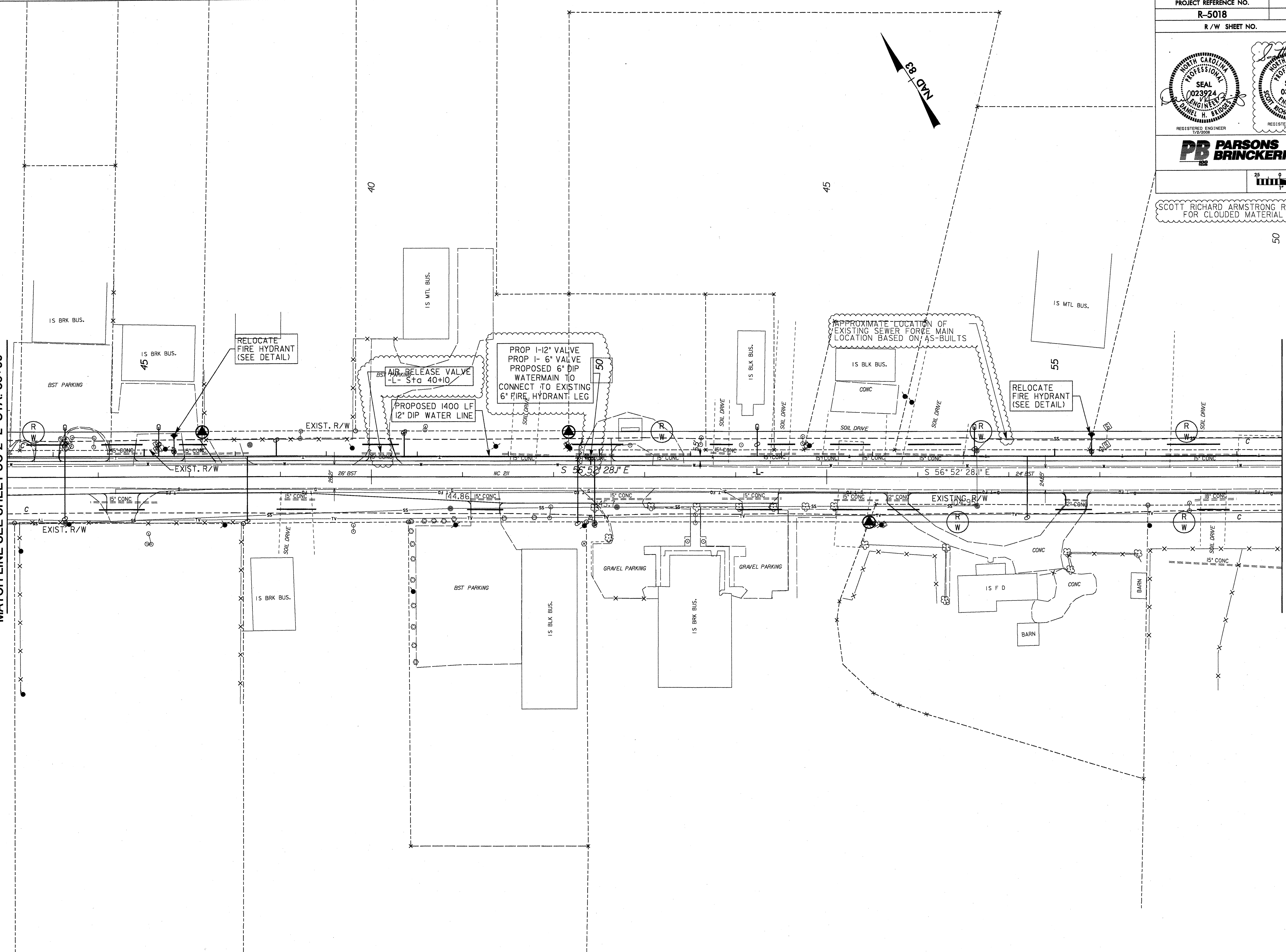
PROPOSED 1400 LF 12" DIP WATER LINE

PROJECT REFERENCE NO. R-5018	SHEET NO. UC-3
R / W SHEET NO.	
PARSONS BRINCKERHOFF <small>1928</small>	

SCOTT RICHARD ARMSTRONG RESPONSIBLE FOR CLOUDED MATERIAL ONLY

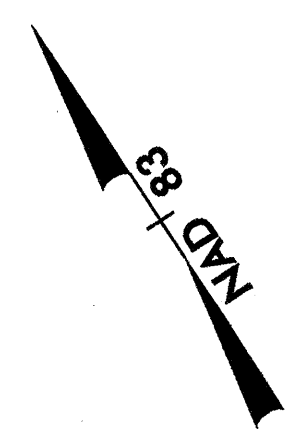
MATCH LINE SEE SHEET UC-2 L- STA. 36+00

MATCH LINE SEE SHEET UC-4 L- STA. 50+00



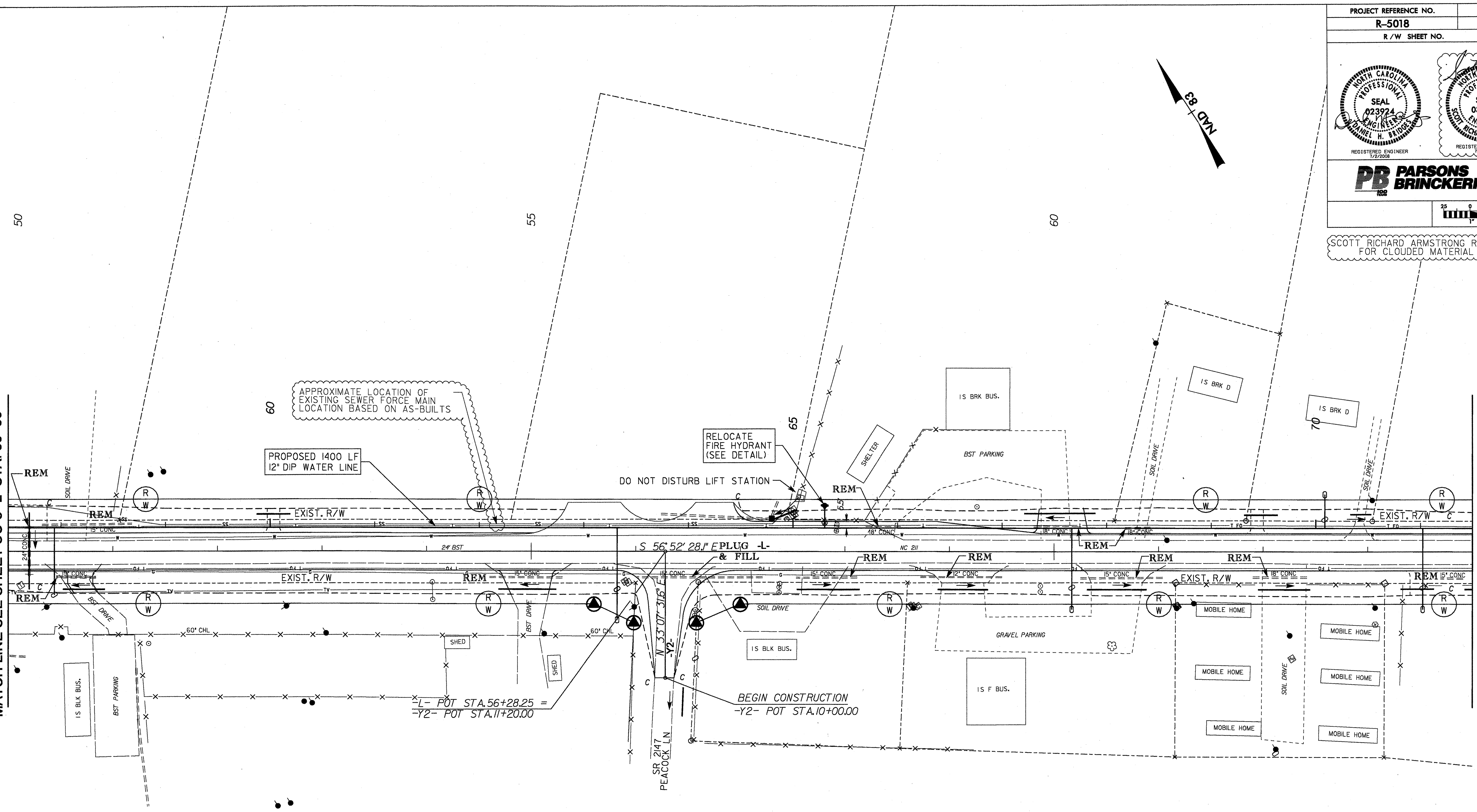
PROJECT REFERENCE NO. R-5018	SHEET NO. UC-4
R / W SHEET NO.	

SCOTT RICHARD ARMSTRONG RESPONSIBLE FOR CLOUDED MATERIAL ONLY



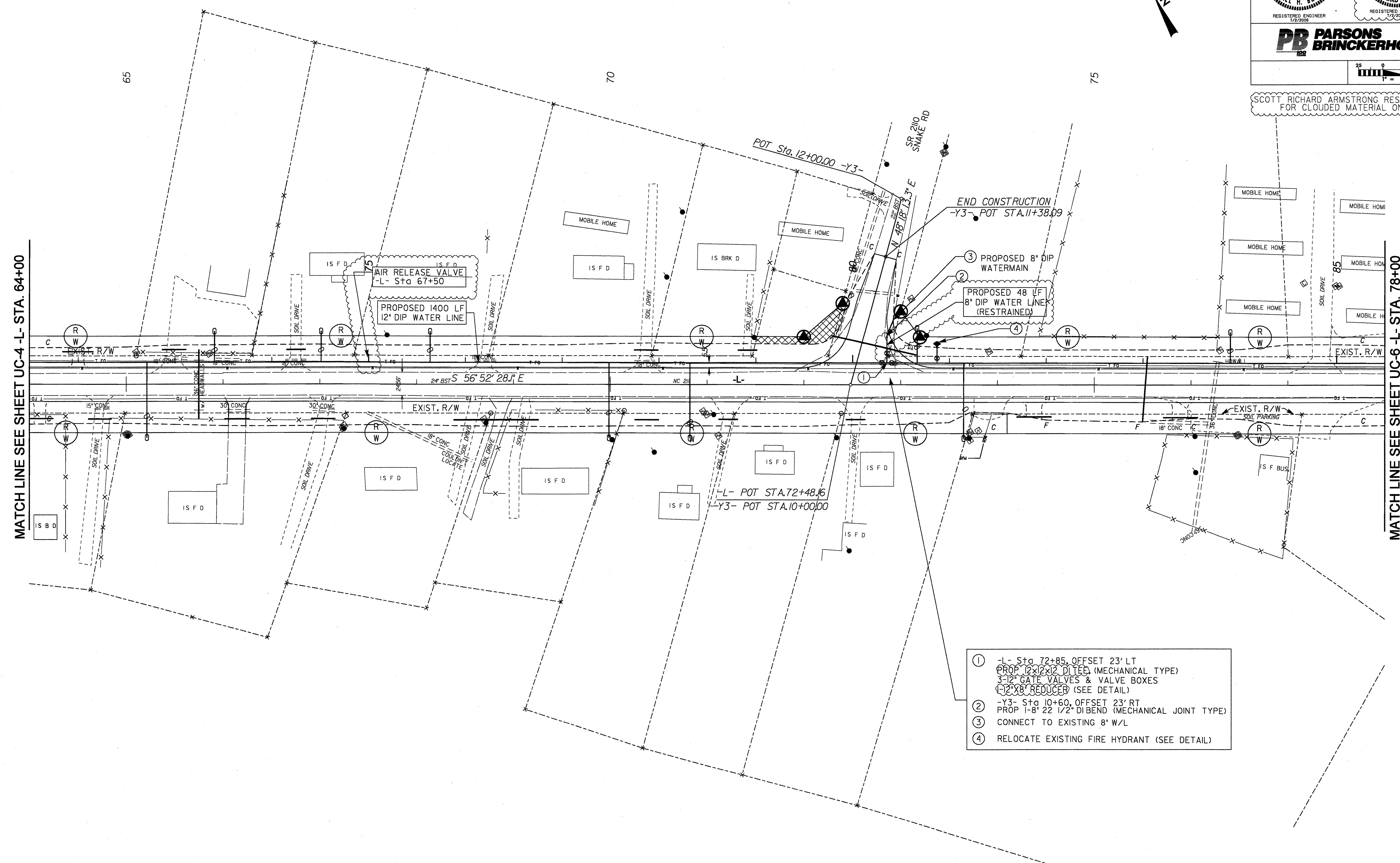
MATCH LINE SEE SHEET UC-3 -L- STA. 50+00

MATCH LINE SEE SHEET UC-5 -L- STA. 64+00



PROJECT REFERENCE NO. R-5018	SHEET NO. UC-5
R/W SHEET NO.	

SCOTT RICHARD ARMSTRONG RESPONSIBLE FOR CLOUDED MATERIAL ONLY



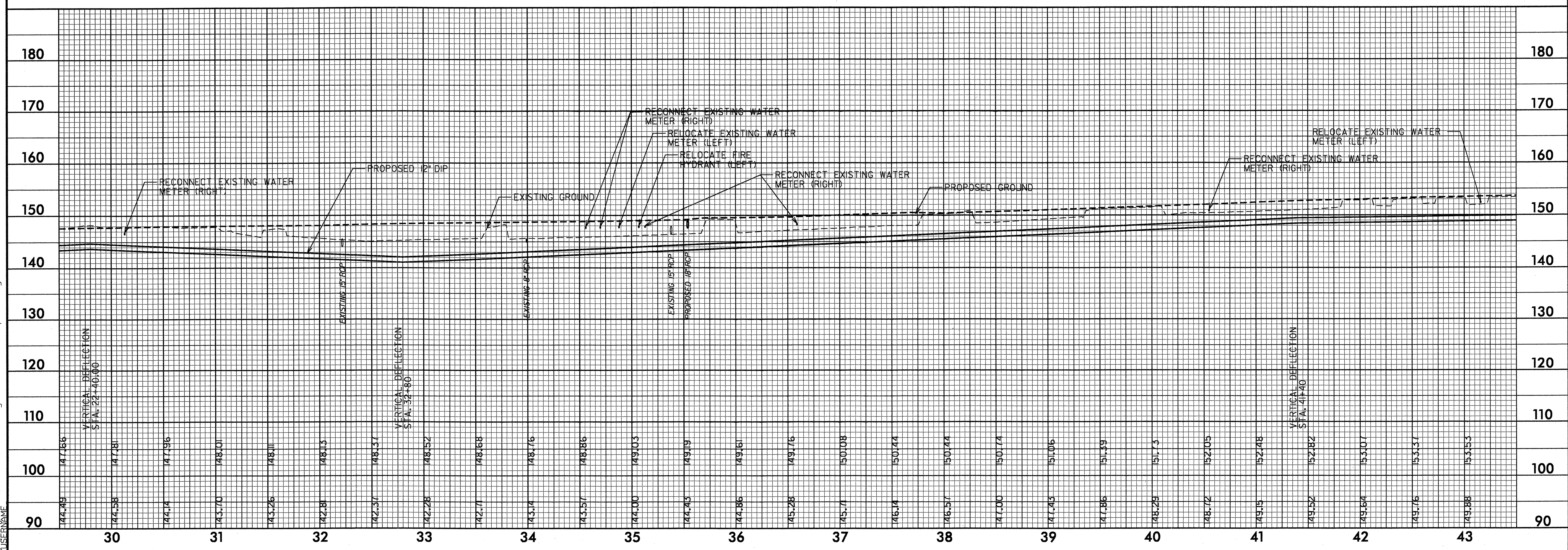
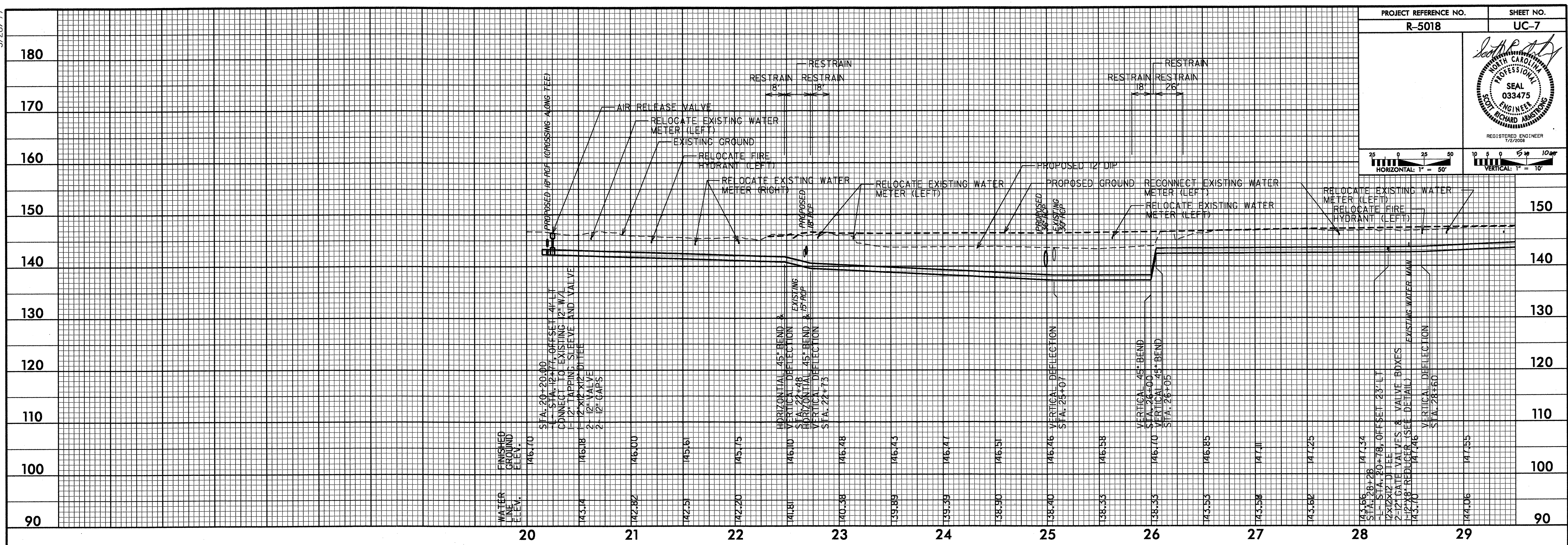
MATCH LINE SEE SHEET UC-4 - L- STA. 64+00

MATCH LINE SEE SHEET UC-6 - L- STA. 78+00

- ① -L- Sta. 72+85, OFFSET 23' LT
PROP 12" X 12" D TEE (MECHANICAL TYPE)
3" GATE VALVES & VALVE BOXES
1-2" X 8" REDUCER (SEE DETAIL)
- ② -Y3- Sta 10+60, OFFSET 23' RT
PROP 1-8" 22 1/2" DI BEND (MECHANICAL JOINT TYPE)
- ③ CONNECT TO EXISTING 8" W/L
- ④ RELOCATE EXISTING FIRE HYDRANT (SEE DETAIL)

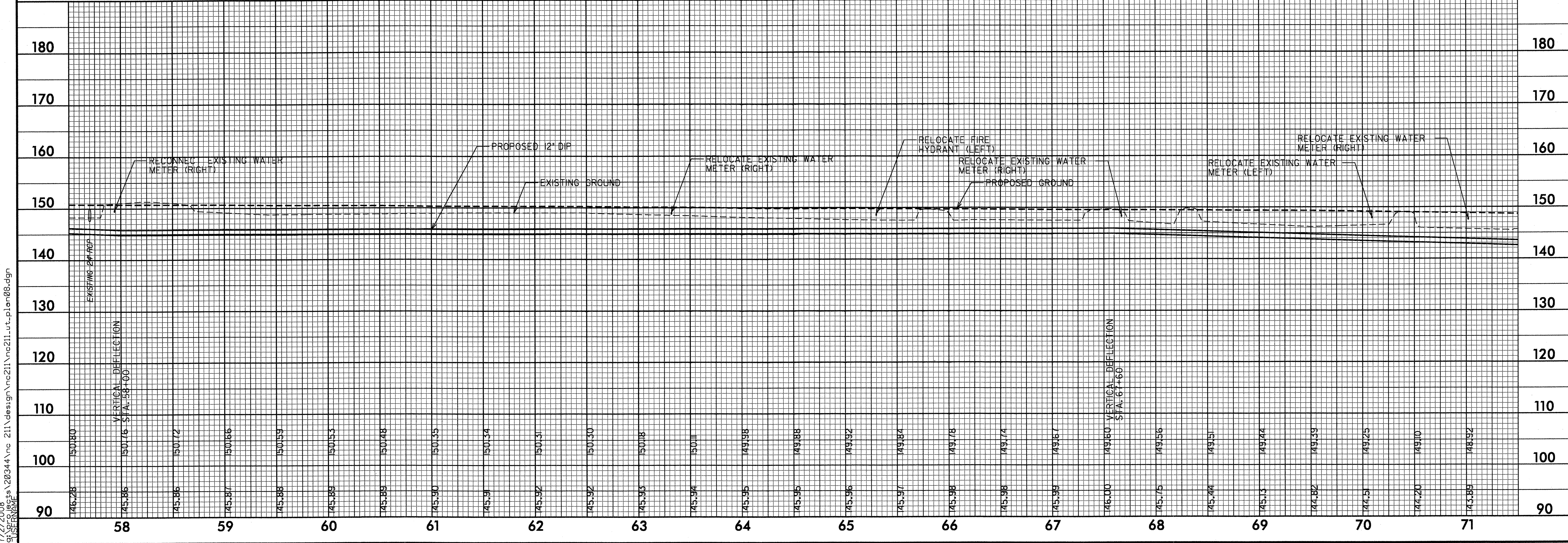
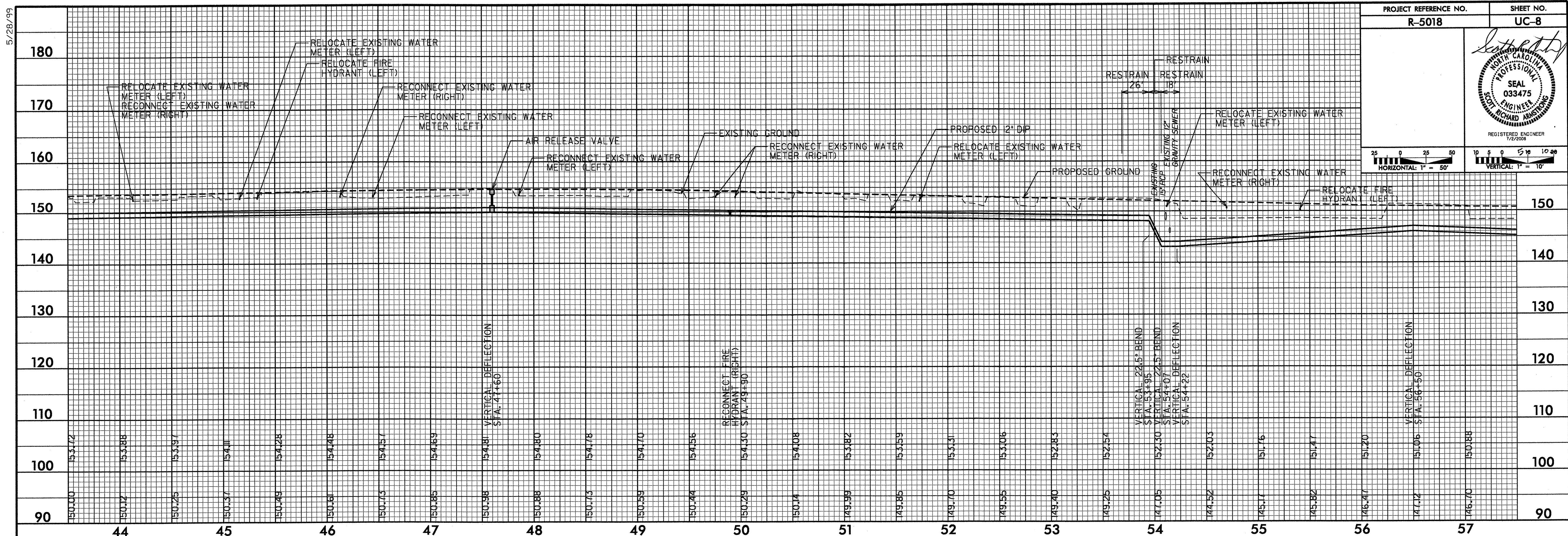
7/2/2008 9:58:56 AM S:\Projects\20344\nc 211\design\nc211\nc211.ut.plm07.dgn 5/28/99

PROJECT REFERENCE NO. R-5018	SHEET NO. UC-7
REGISTERED ENGINEER 7/2/2008	



5/28/99

7/2/2008
9:52:00
C:\Users\jgarcia\Documents\20344\nc 21\design\nc21\nc211.ut.plm08.dgn



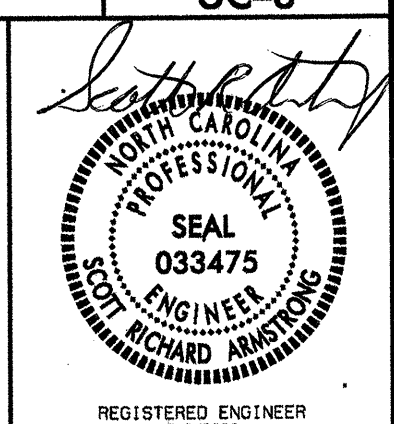
PROJECT REFERENCE NO. R-5018 SHEET NO. UC-8

REGISTERED ENGINEER 7/2/2008

SEAL 033475

REGISTERED ENGINEER 7/2/2008

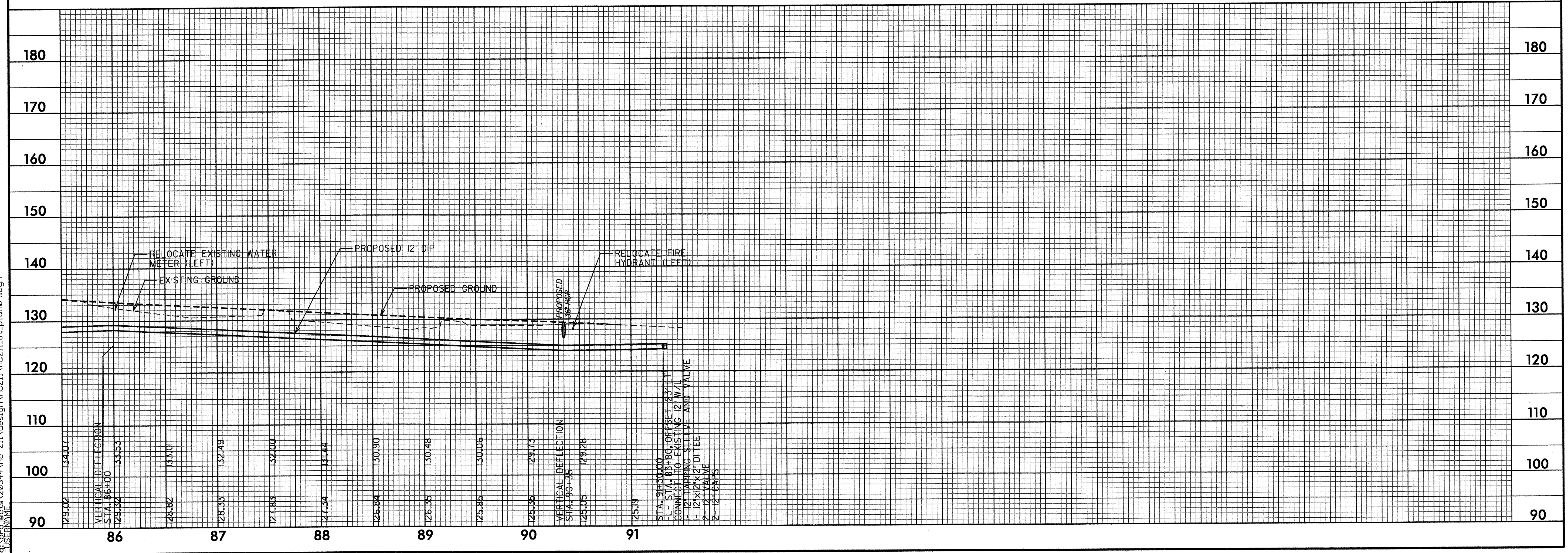
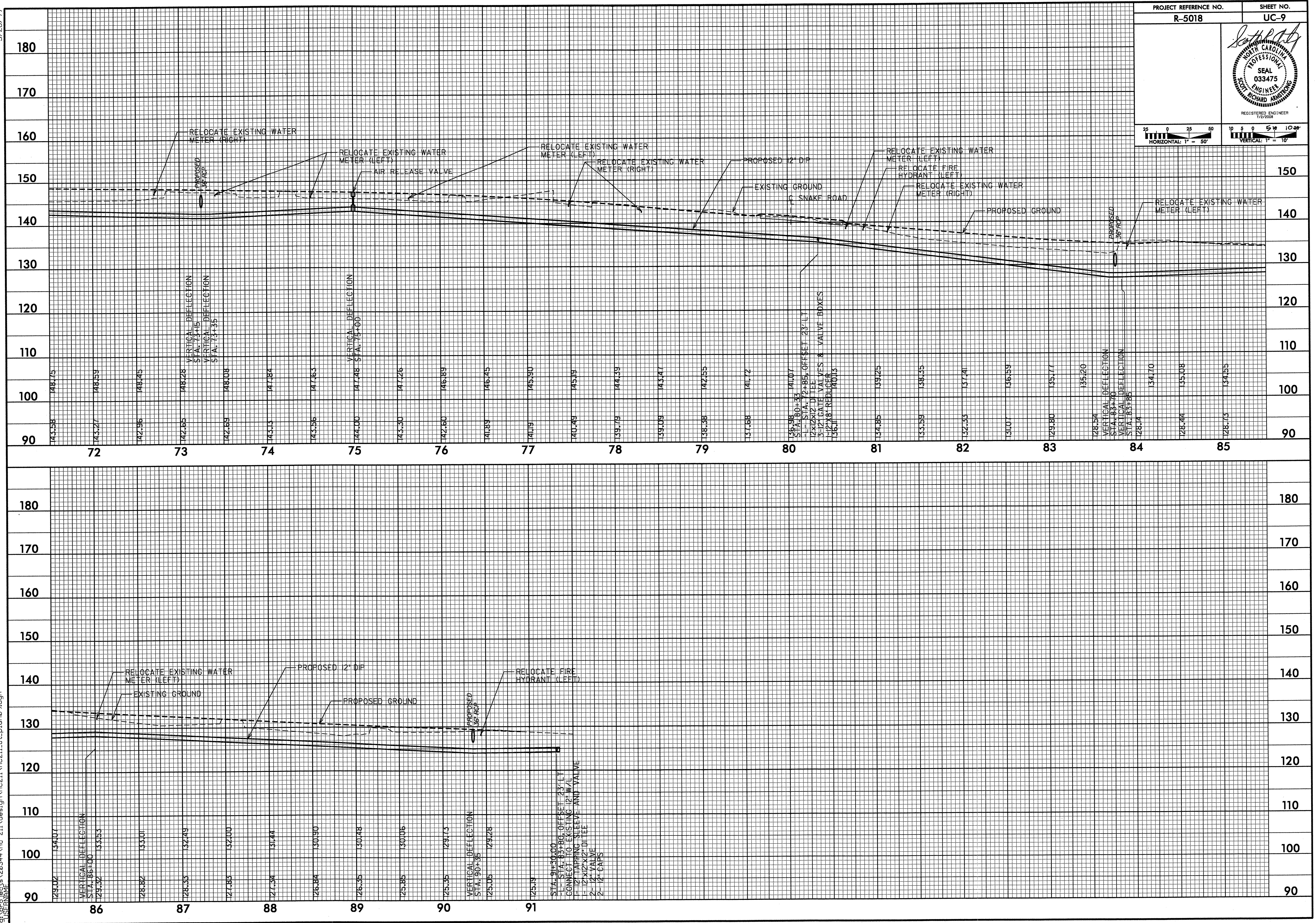
HORIZONTAL: 1" = 50' VERTICAL: 1" = 10'



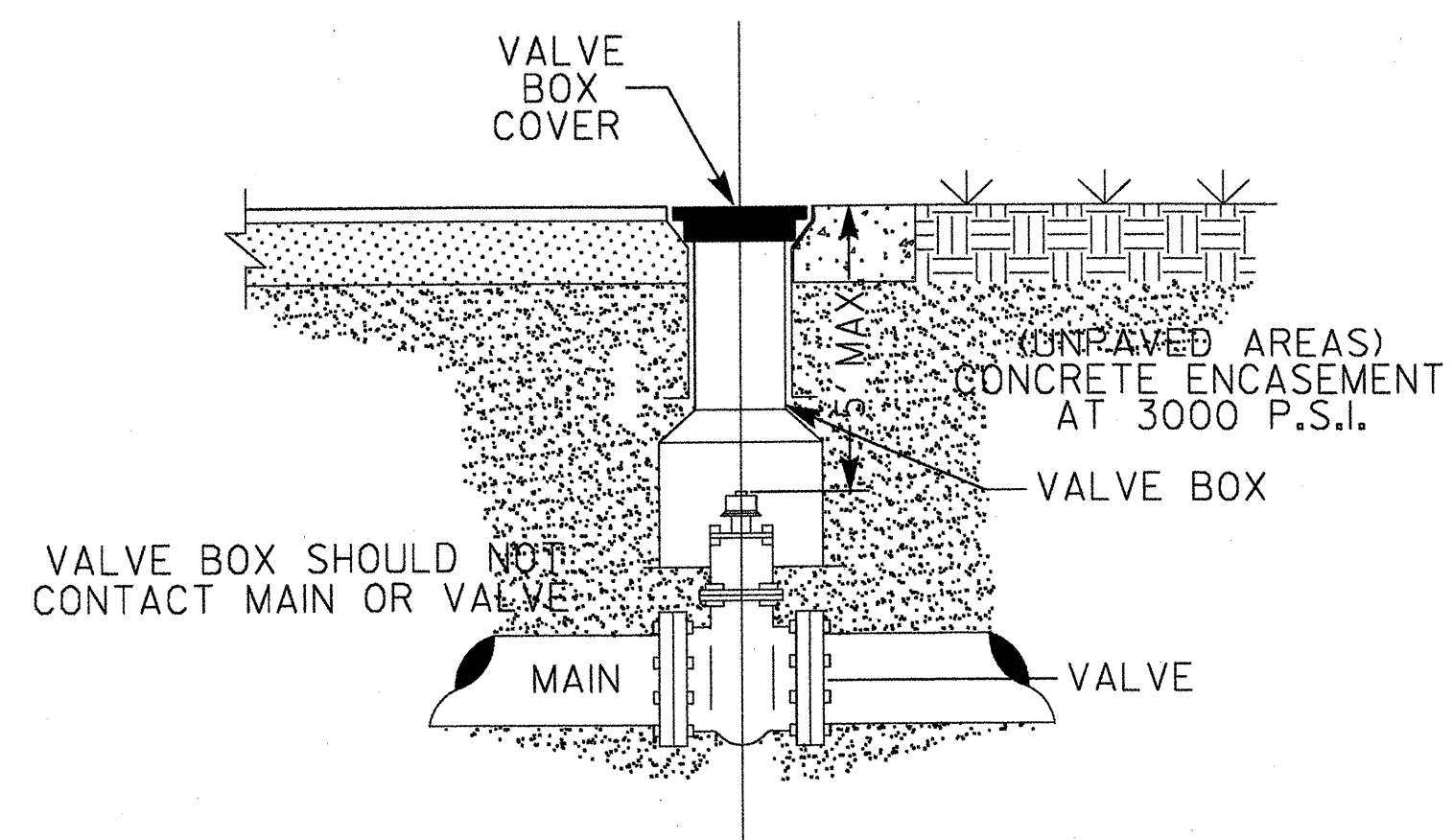
5/28/99

7/2/2008
C:\projects\20344\nc 211\design\nc211\nc211-ut-plan09.dgn
USER:RAM

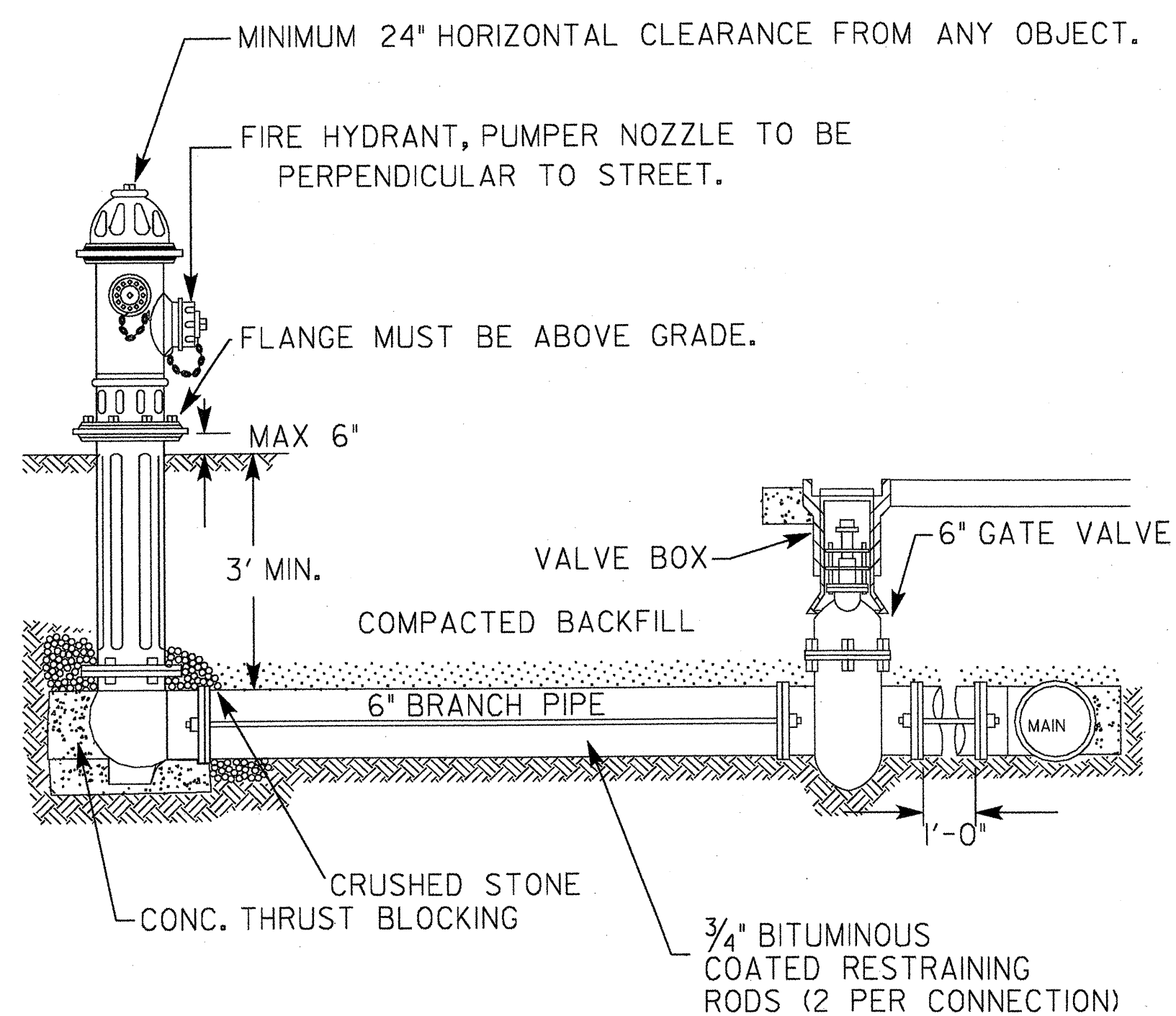
PROJECT REFERENCE NO. R-5018	SHEET NO. UC-9
 HORIZONTAL 1" = 50'	 VERTICAL 1" = 10'



SCOTT RICHARD ARMSTRONG RESPONSIBLE FOR CLOUDED MATERIAL ONLY



VALVE BOX INSTALLATION



FIRE HYDRANT INSTALLATION

GENERAL WATER MAIN CONSTRUCTION NOTES

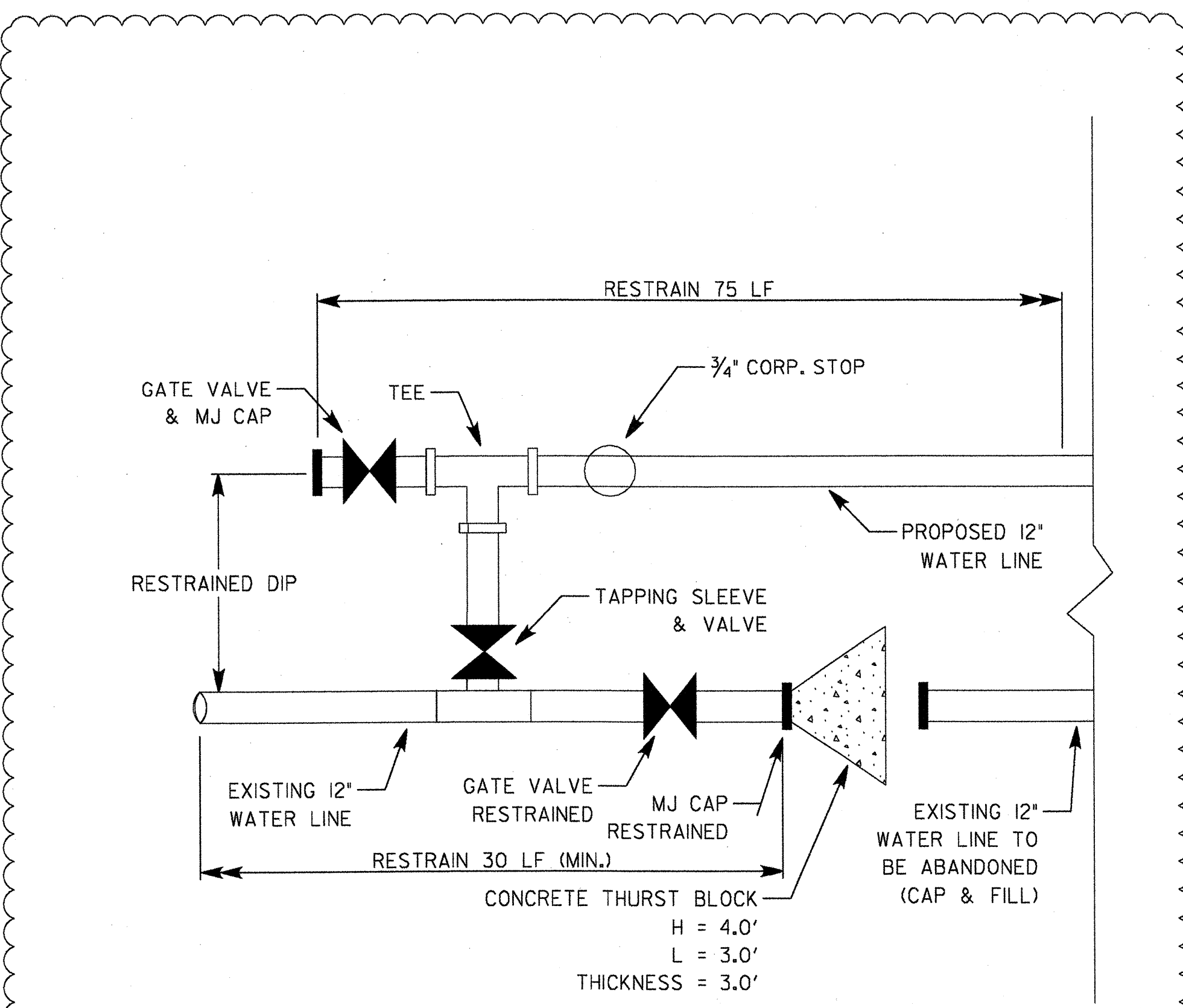
1. ALL WATER MAIN CONSTRUCTION SHALL COMPLY WITH APPLICABLE NCDOT 2006 SPECIFICATIONS & STANDARDS.

2. MINIMUM COVER FOR ALL WATER LINES SHALL BE 3 FT.

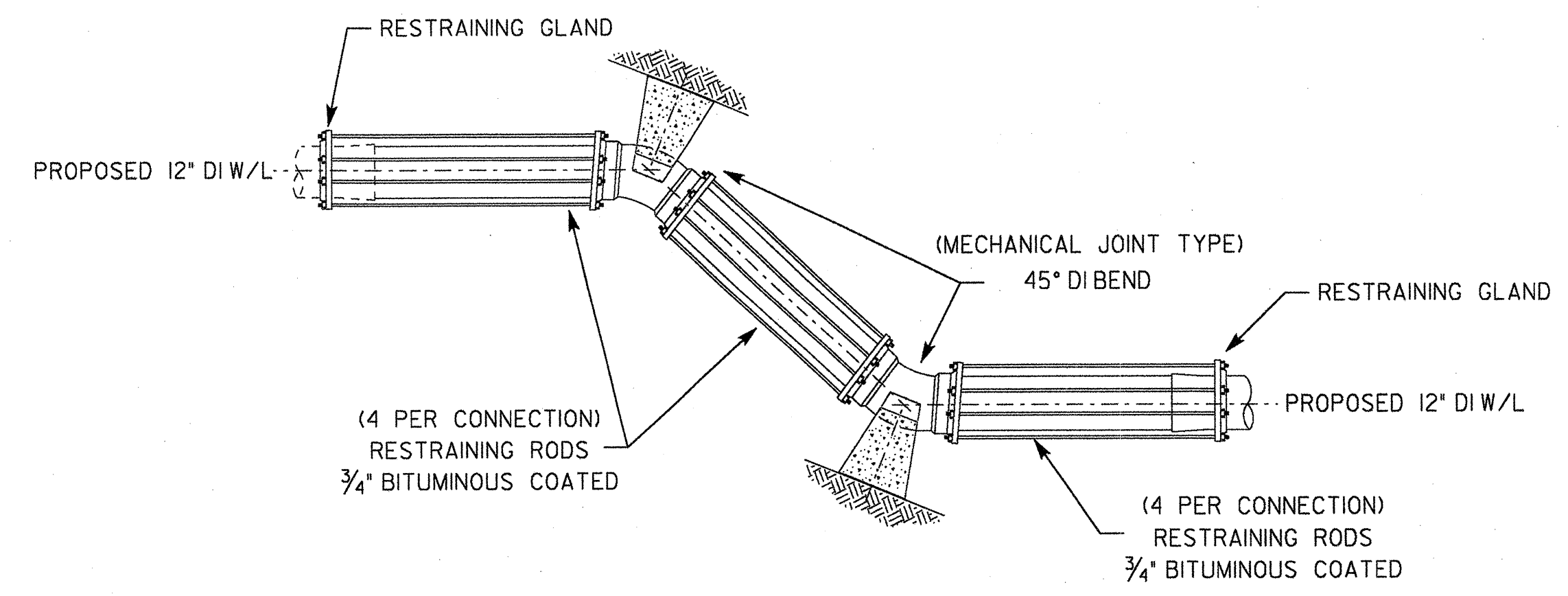
3. CONTRACTOR SHALL BE RESPONSIBLE FOR LOCATING ALL EXISTING SERVICES AND ENSURING THAT ALL EXISTING SERVICES, WITHIN THE LIMITS OF THE PROPOSED WATER MAIN RELOCATION, ARE CONNECTED TO THE NEW WATER MAIN.

4. CONTRACTOR SHALL PHASE WATER MAIN CONSTRUCTION TO MINIMIZE THE FREQUENCY AND DURATION OF WATER SERVICE INTERRUPTIONS.

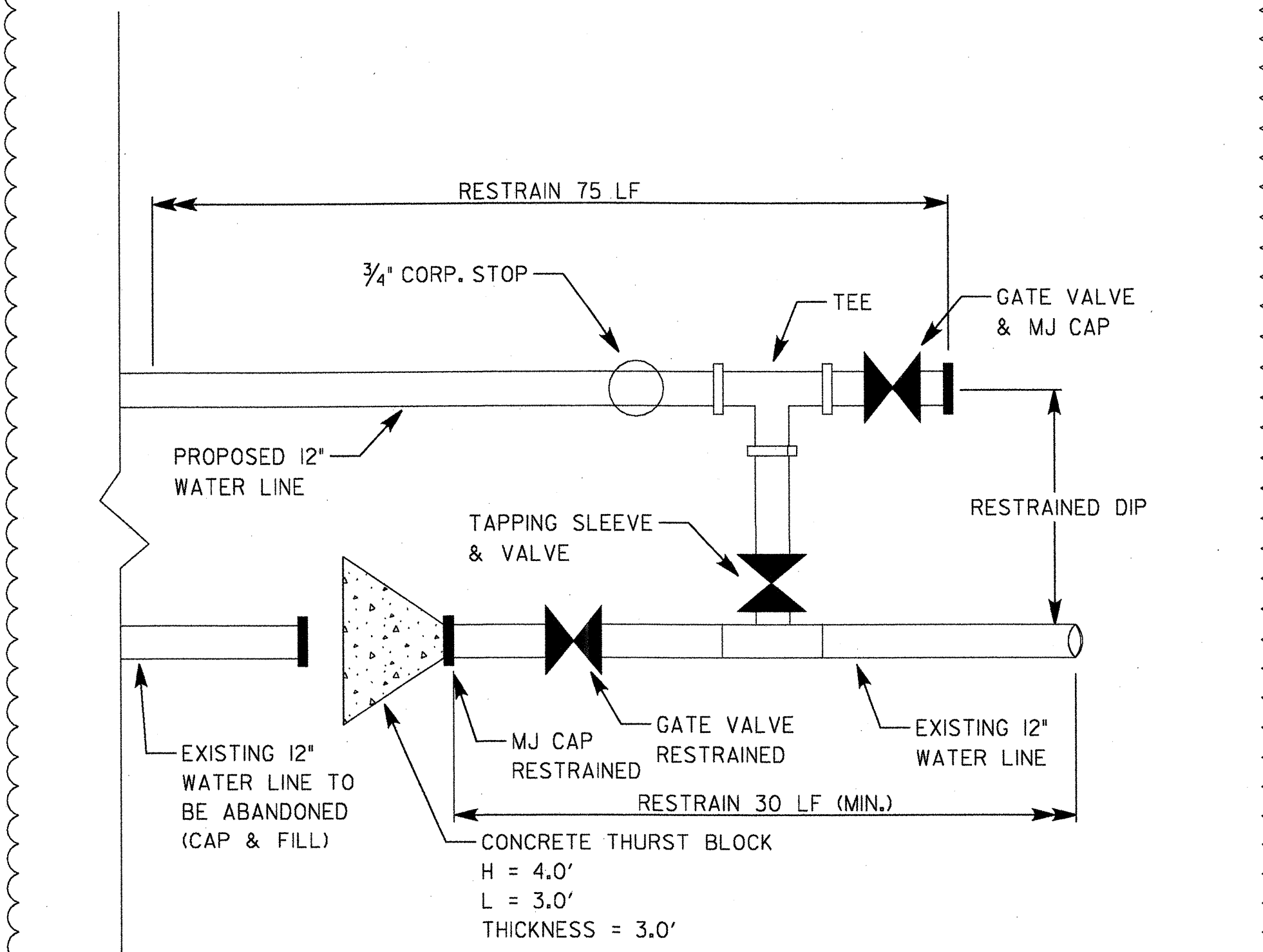
5. CONTRACTOR SHALL PERFORM WATER LINE ACCEPTANCE TESTING IN ACCORDANCE WITH NCDOT 2006 SPECIFICATIONS & STANDARDS.



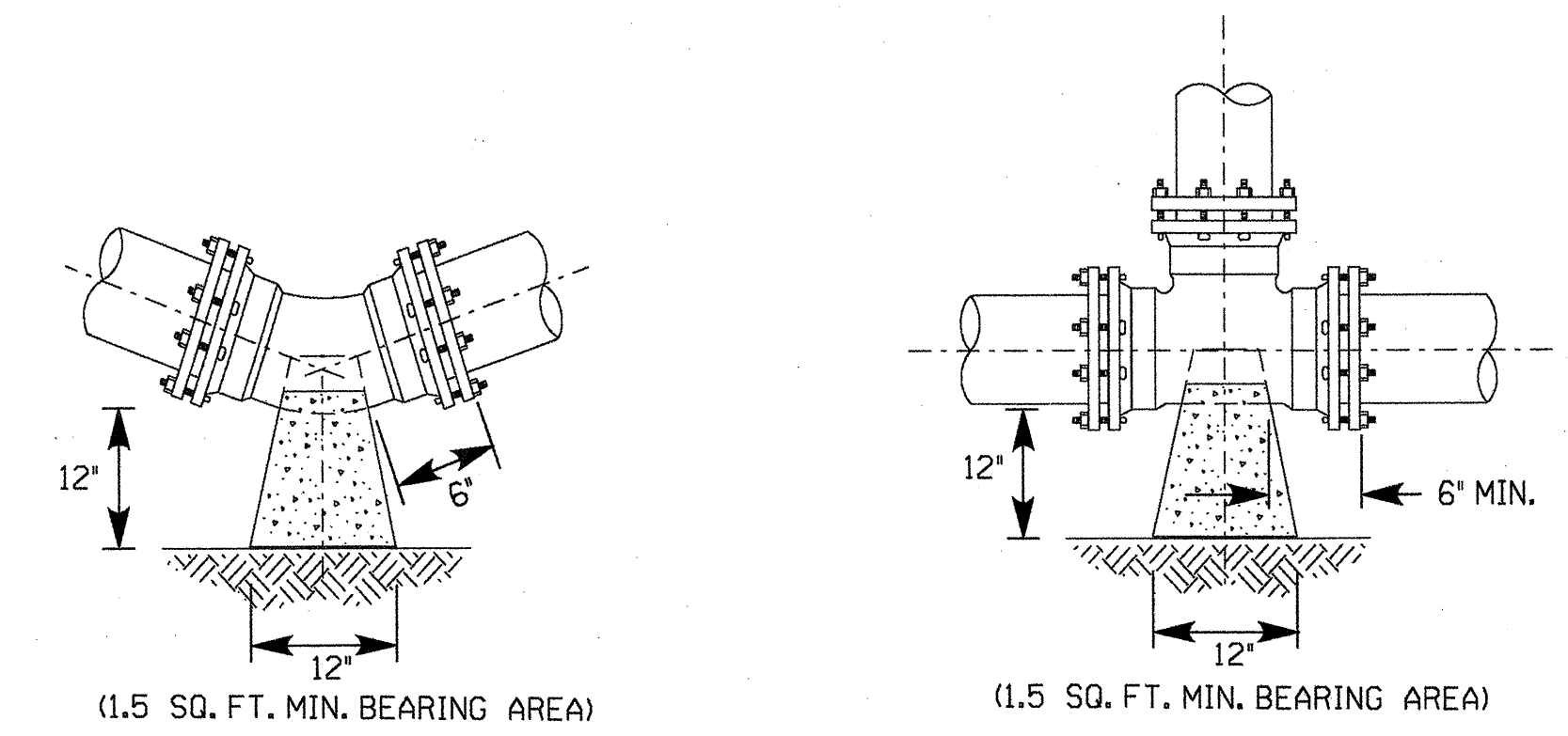
CONNECTION DETAIL NO. 1
STATION 12+77 +/-



CONNECTION DETAIL NO. 2
STATION 15+15 +/-



CONNECTION DETAIL NO. 3
STATION 83+80 +/-

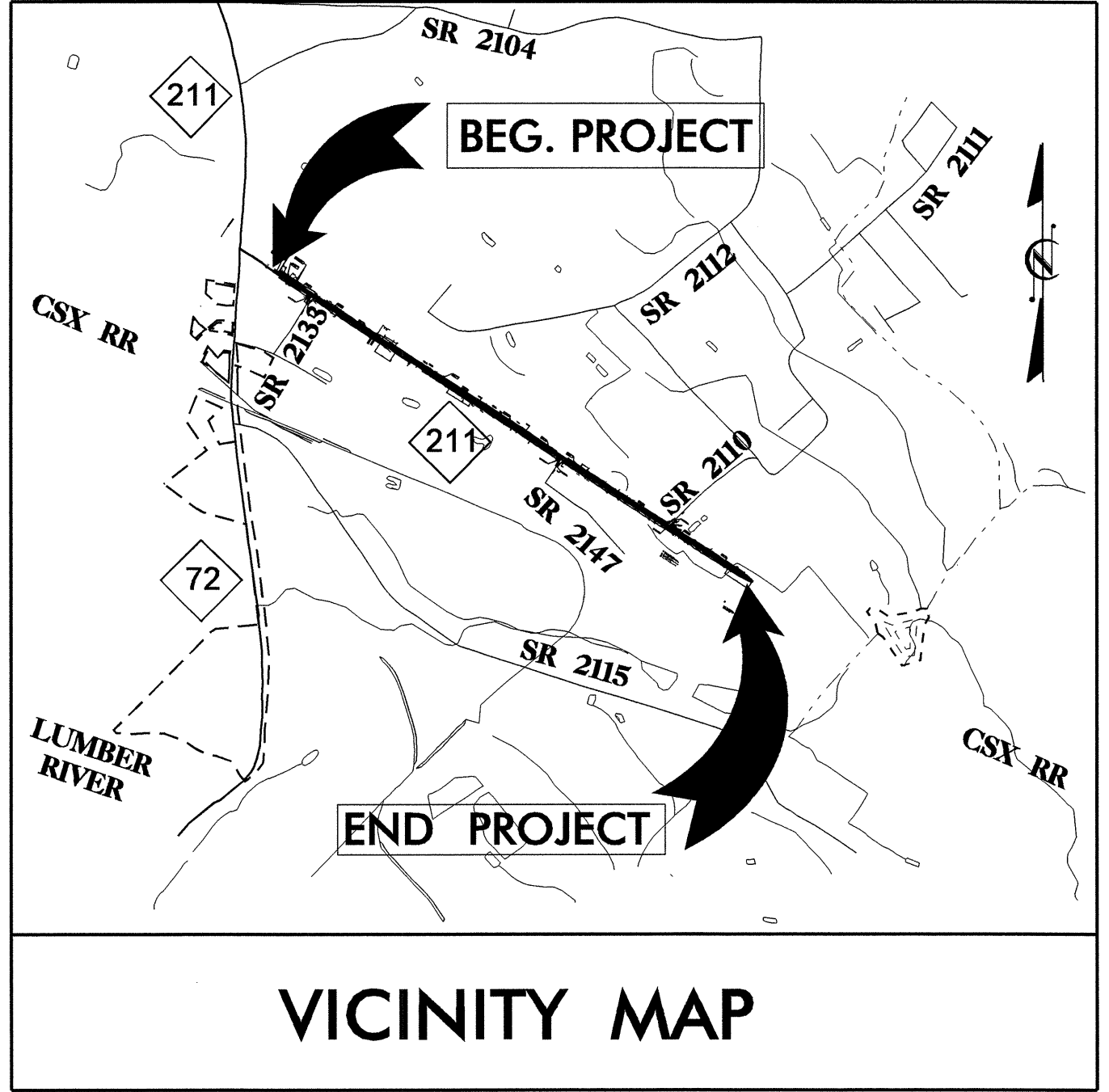


THRUST BLOCK DETAILS

28-JUL-2008 11:04
 s:\specdes\utilities\rbw\jes\vr-5018\proj\vr-5018_ut_title_uol.psh.dgn
 \$\$\$USERNAME\$\$\$

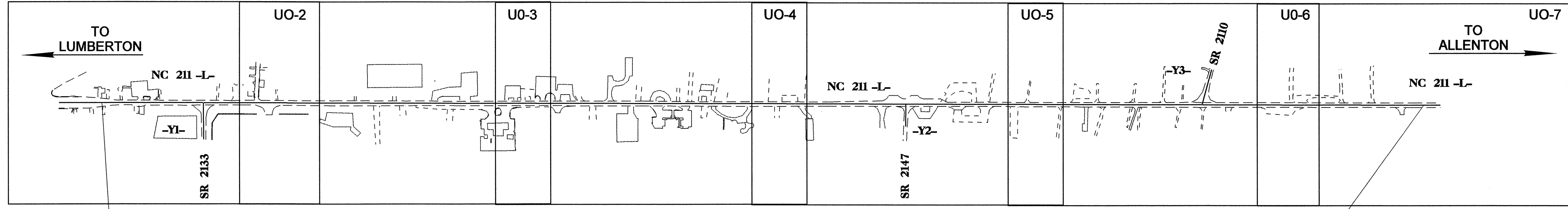
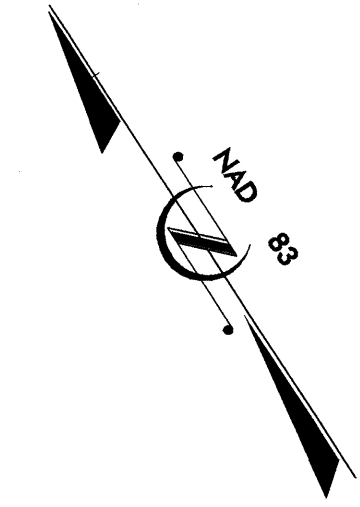
PROJECT: R-5018
 CONTRACT: C201810

T.I.P. NO.	SHEET NO.
R-5018	UO-1



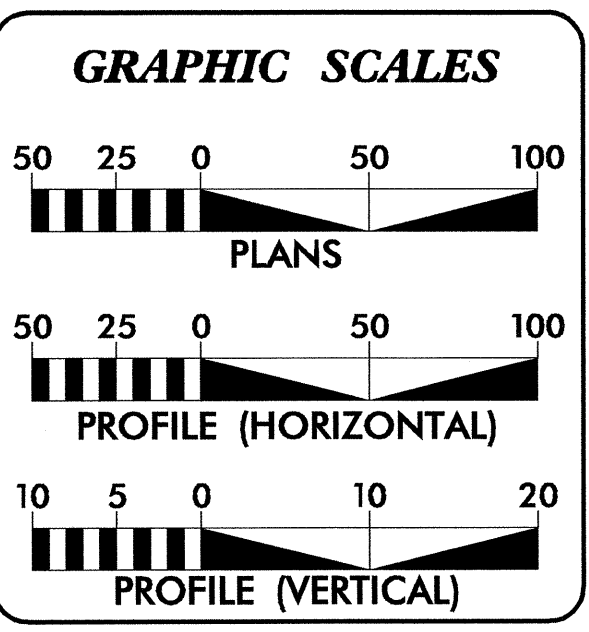
STATE OF NORTH CAROLINA
 DIVISION OF HIGHWAYS
UTILITY BY OTHERS PLANS
ROBESON COUNTY

**LOCATION: NC 211 FROM NC 72 (ROBERTS AVENUE)
 TO EAST OF SR 2110 (SNAKE ROAD)**
TYPE OF WORK: UTILITIES BY OTHERS



-L- POT STA. 12+35.00
 BEGIN STATE PROJECT R-5018

-L- POT STA. 85+50.00
 END STATE PROJECT R-5018



INDEX OF SHEETS

SHEET NO.	DESCRIPTION
UO-1	TITLE SHEET
UO-2 THRU UO-7	UTILITY BY OTHERS PLAN SHEETS

- UTILITY OWNERS ON PROJECT**
- (1) TELEPHONE: AT&T
 - (2) LONG DISTANCE COMMUNICATION: DELTACOM / BTI
 - (3) LONG DISTANCE COMMUNICATION: PALMETTONET / FRC
 - (4) POWER DISTRIBUTION: PROGRESS ENERGY
 - (5) POWER DISTRIBUTION: CITY OF LUMBERTON
 - (6) NATURAL GAS: PIEDMONT NATURAL GAS
 - (7) CABLEVISION: TIME WARNER CABLE

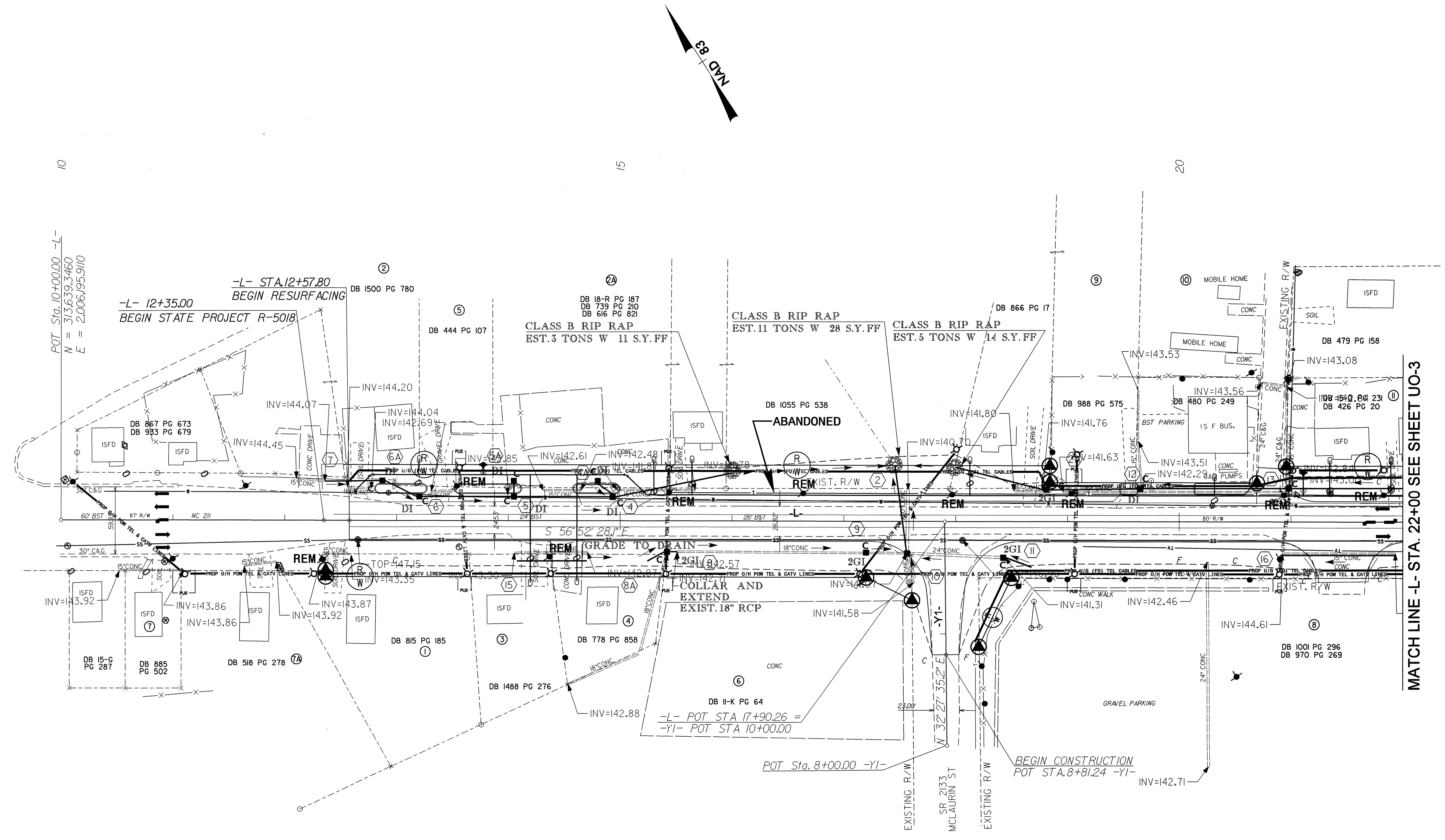
PREPARED IN THE OFFICE OF:
DIVISION OF HIGHWAYS
PROJECT SERVICES
UTILITY SECTION
 1591 MAIL SERVICES CENTER
 RALEIGH NC 27699-1591
 PHONE (919) 250-4128
 FAX (919) 250-4119

Roger Worthington, P.E. UTILITIES SECTION ENGINEER
R.B. Wilkins, P.E. UTILITIES SQUAD LEADER PROJECT ENGINEER
James E. Swinson UTILITIES PROJECT DESIGNER

UTILITIES BY OTHERS

NOTE:
ALL PROPOSED UTILITY WORK
SHOWN ON THIS SHEET WILL
BE DONE BY OTHERS

5/14/99

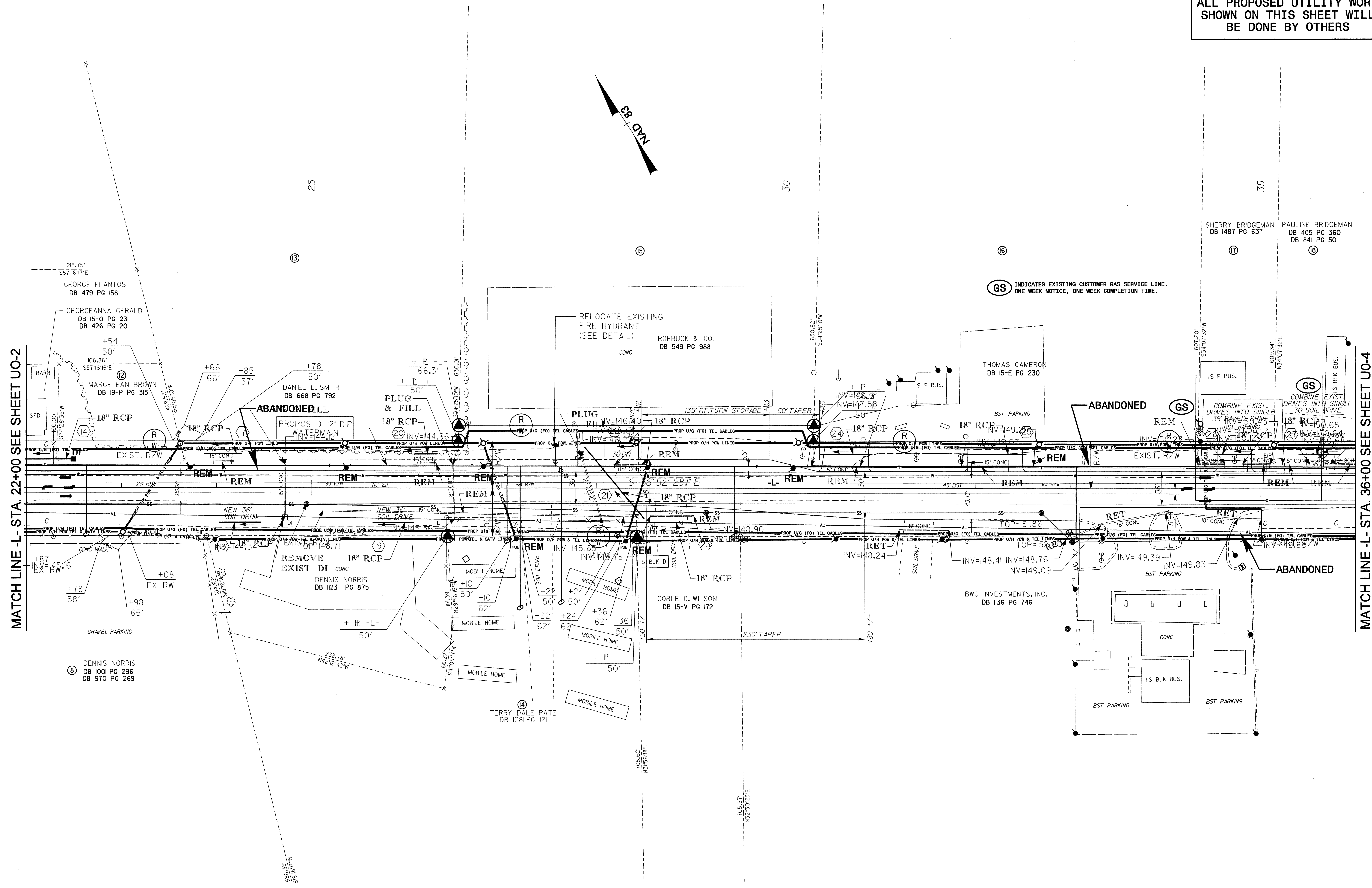


28-JUL-2008 11:04
\\esa\utility\proj\5018\pro\AR-5018-Ut-4_U02_psh.dgn

UTILITIES BY OTHERS

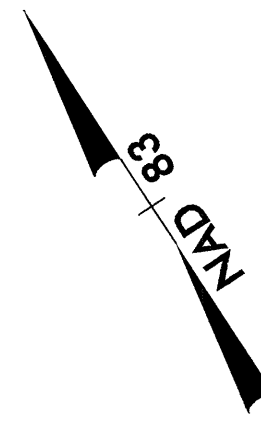
NOTE:
ALL PROPOSED UTILITY WORK
SHOWN ON THIS SHEET WILL
BE DONE BY OTHERS

5/14/99



MATCH LINE -L- STA. 22+00 SEE SHEET U0-2

MATCH LINE -L- STA. 36+00 SEE SHEET U0-4

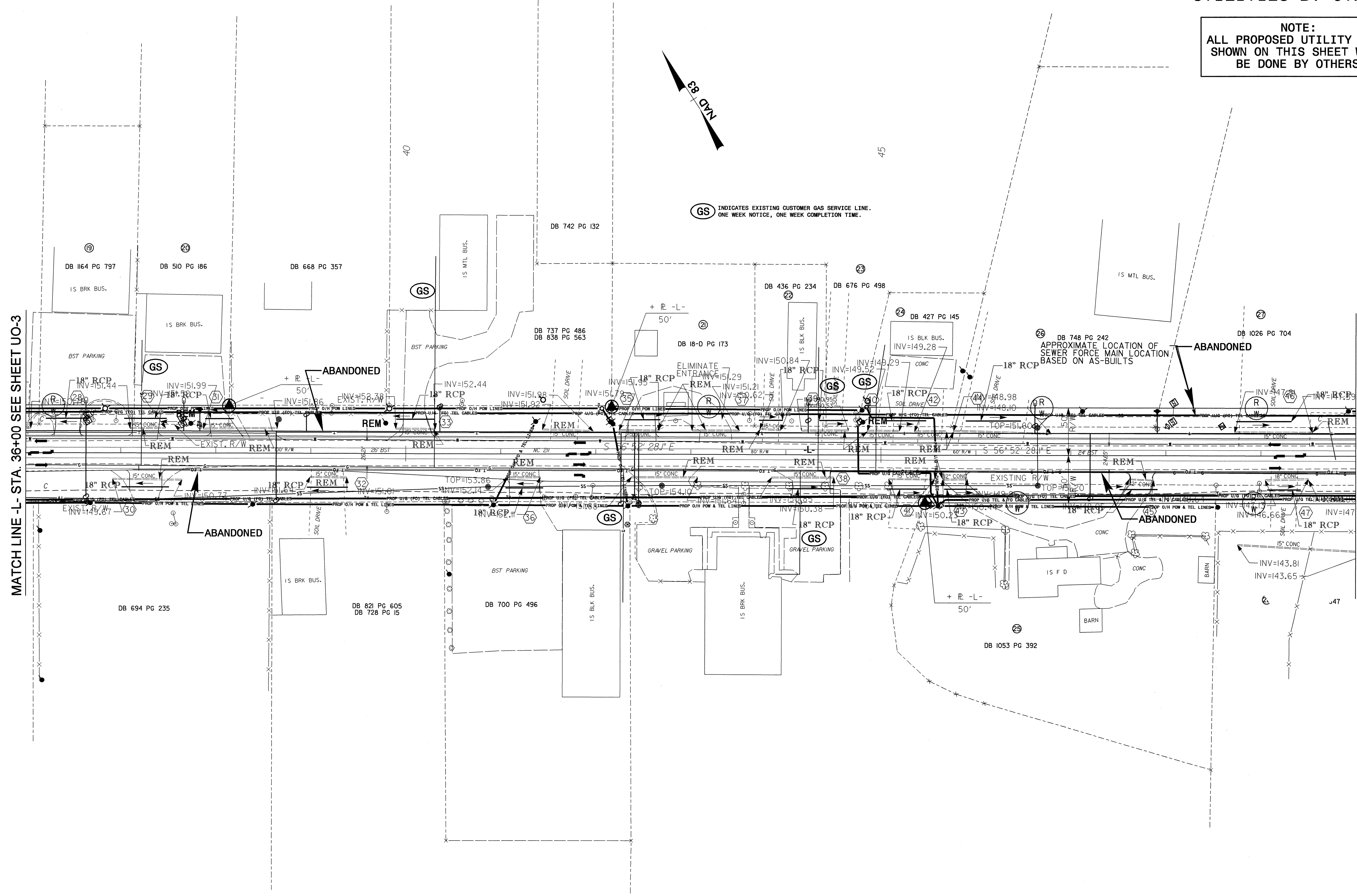


(GS) INDICATES EXISTING CUSTOMER GAS SERVICE LINE.
ONE WEEK NOTICE, ONE WEEK COMPLETION TIME.

28-JUL-2008 11:05
\\s\utilities\p\5018\pro\1\R-5018-Ut-5-U03-psh.dgn

UTILITIES BY OTHERS

NOTE:
ALL PROPOSED UTILITY WORK
SHOWN ON THIS SHEET WILL
BE DONE BY OTHERS



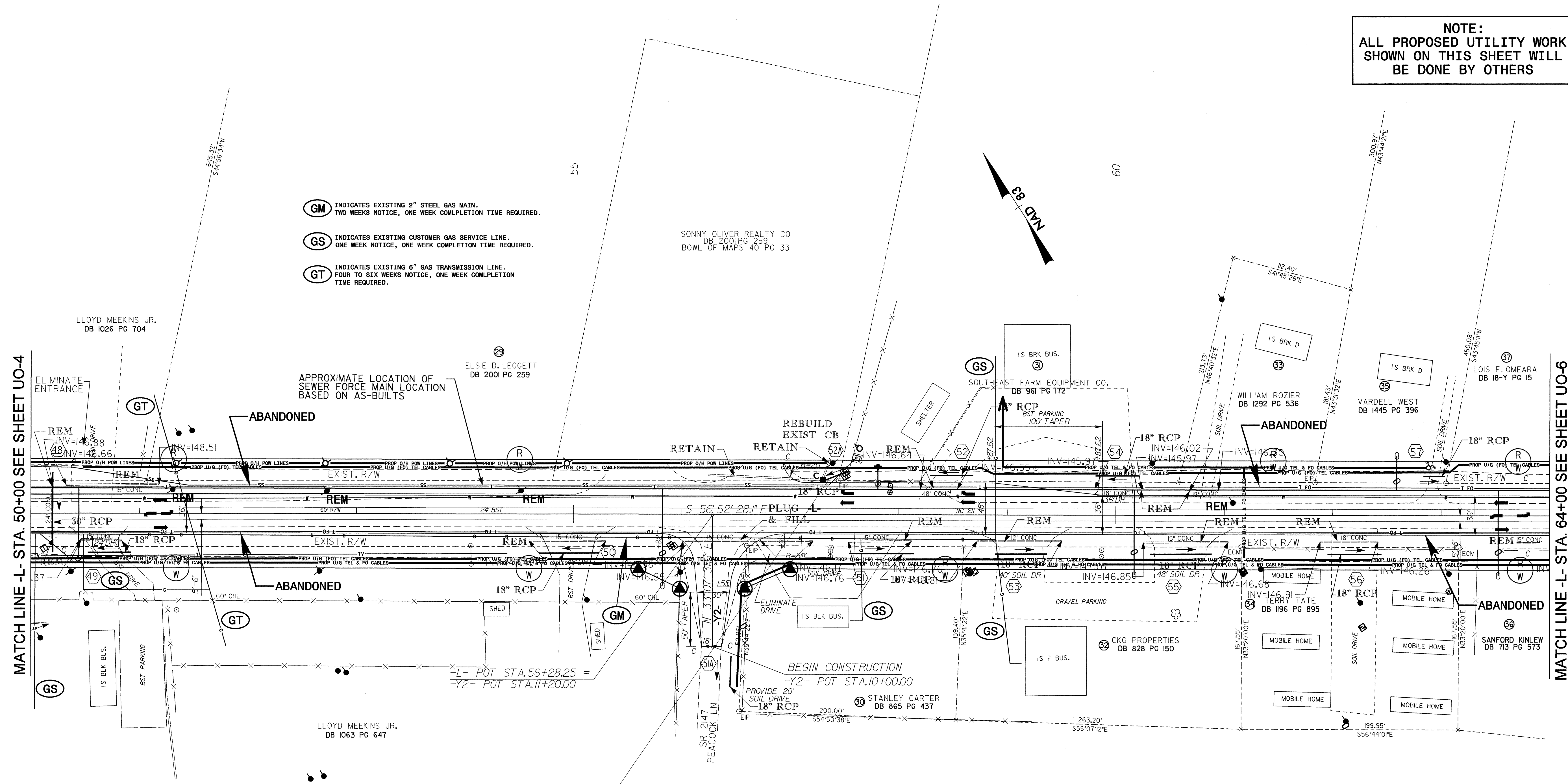
5/14/99

28-JUL-2008 11:05 I:\05 5018\proj\1-5018-ut_6_uo4_psh.dgn

UTILITIES BY OTHERS

NOTE:
ALL PROPOSED UTILITY WORK
SHOWN ON THIS SHEET WILL
BE DONE BY OTHERS

- GM** INDICATES EXISTING 2" STEEL GAS MAIN.
TWO WEEKS NOTICE, ONE WEEK COMPLETION TIME REQUIRED.
- GS** INDICATES EXISTING CUSTOMER GAS SERVICE LINE.
ONE WEEK NOTICE, ONE WEEK COMPLETION TIME REQUIRED.
- GT** INDICATES EXISTING 6" GAS TRANSMISSION LINE.
FOUR TO SIX WEEKS NOTICE, ONE WEEK COMPLETION TIME REQUIRED.



MATCH LINE -L- STA. 50+00 SEE SHEET UO-4

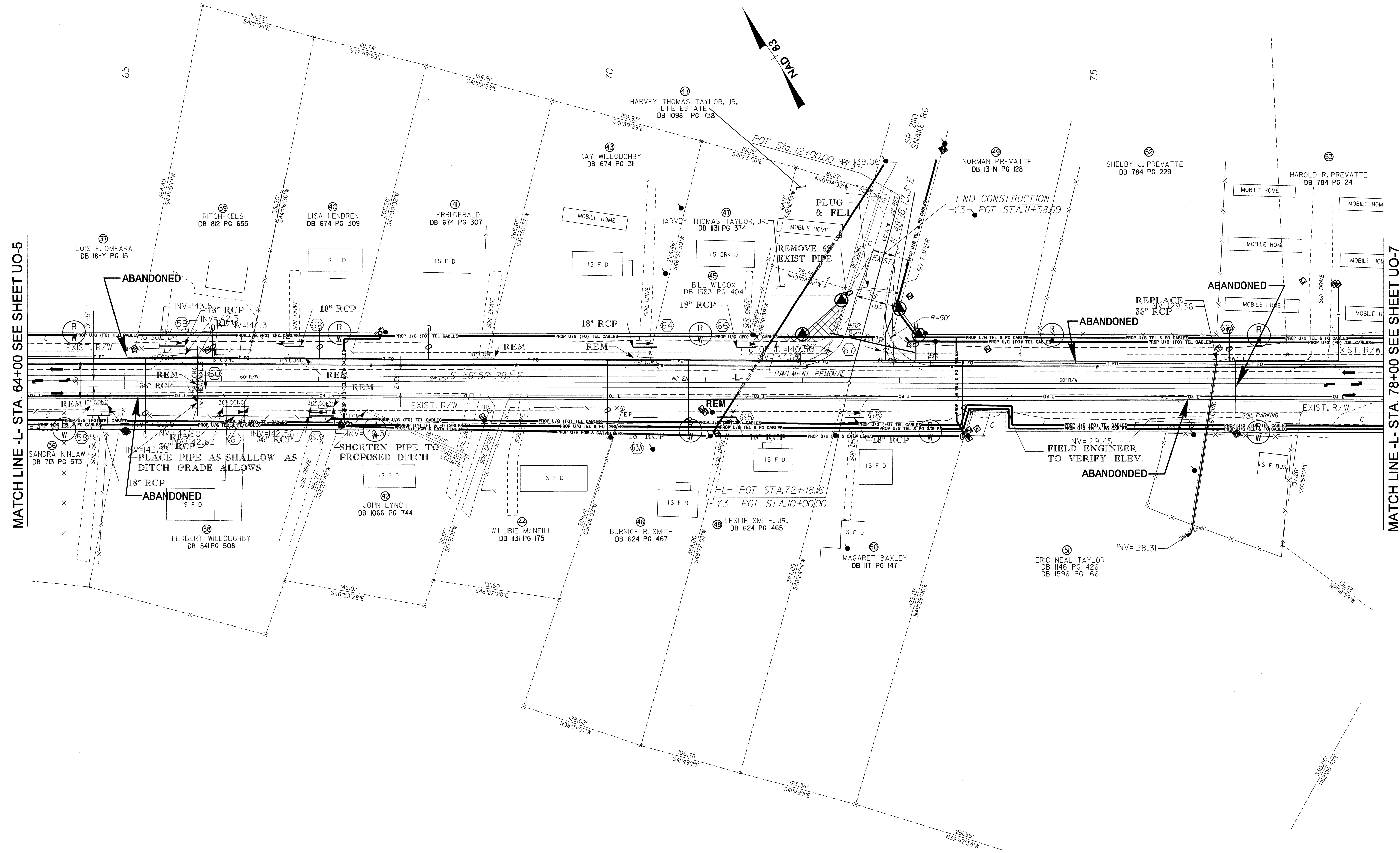
MATCH LINE -L- STA. 64+00 SEE SHEET UO-6

5/14/99

28-JUL-2008 11:06 I:\06
Utilities\BY OTHERS\U0-5018-U0-5-psh.dgn

UTILITIES BY OTHERS

NOTE:
ALL PROPOSED UTILITY WORK SHOWN ON THIS SHEET WILL BE DONE BY OTHERS



MATCH LINE -L- STA. 64+00 SEE SHEET UO-5

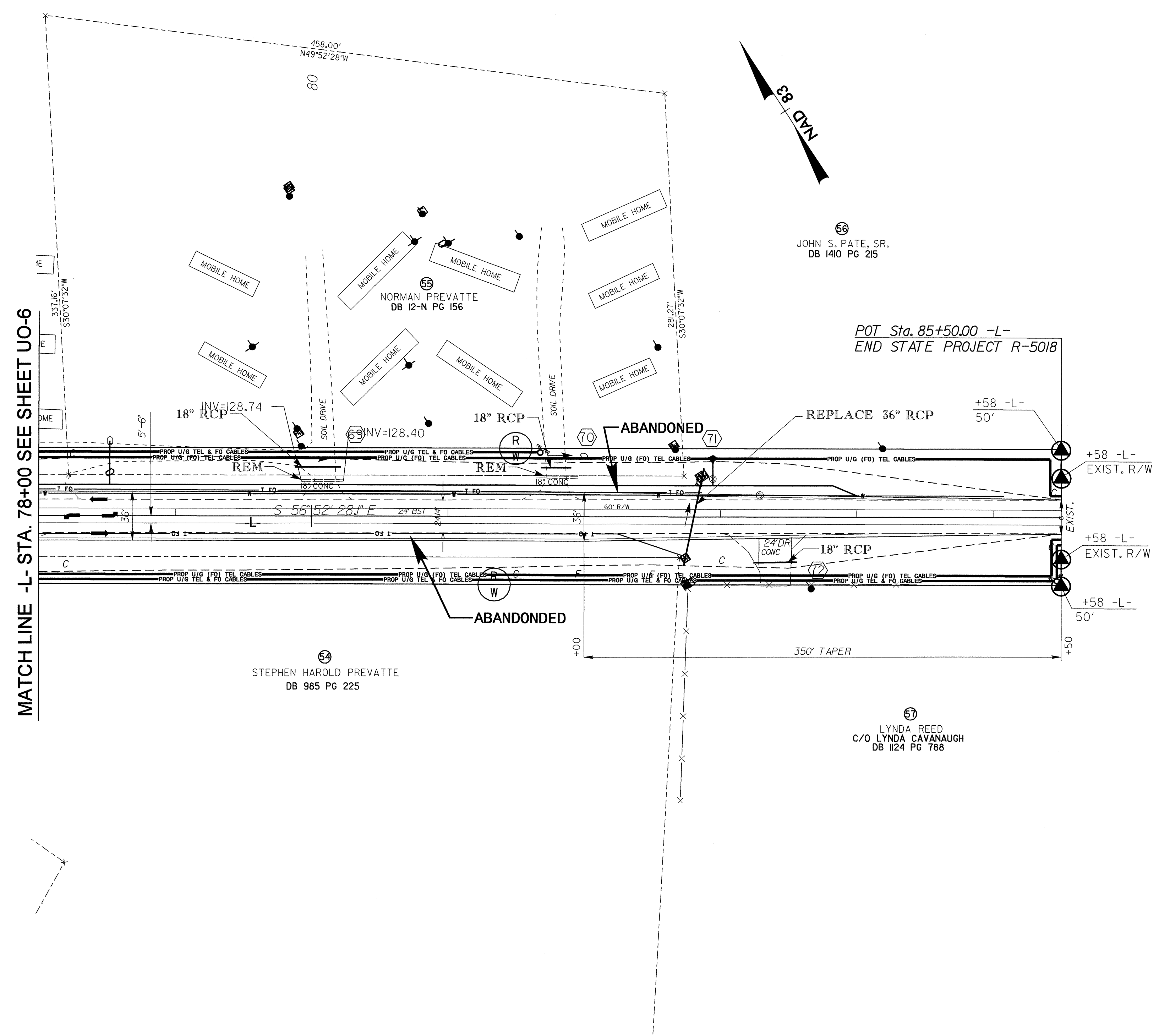
MATCH LINE -L- STA. 78+00 SEE SHEET UO-7

5/14/99

28-JUL-2008 14:06
 I:\projects\5018\proj\NR-5018-U0-6\U06_psh.dgn
 5018-006-006.dwg

UTILITIES BY OTHERS

NOTE:
ALL PROPOSED UTILITY WORK
SHOWN ON THIS SHEET WILL
BE DONE BY OTHERS



5/14/99

28-JUL-2008 11:07
 utilities\c:\p\proj\5018\proj\5018-ut-9-uo7-ps-h.dgn