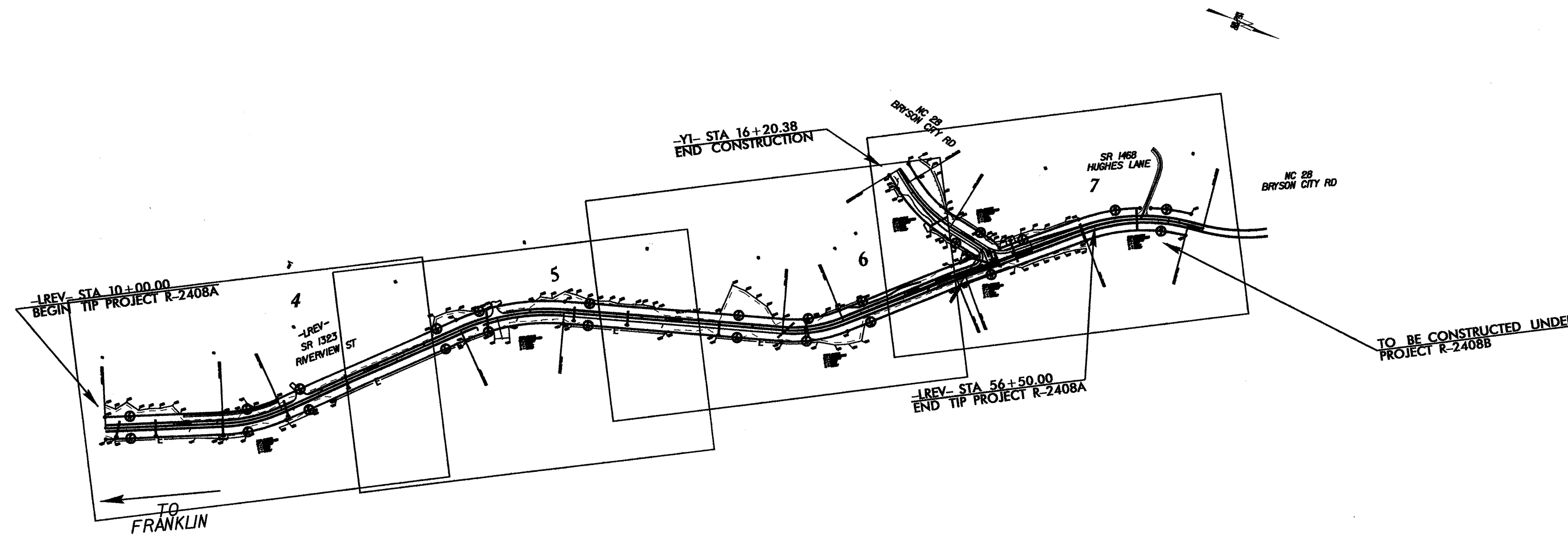


TIP PROJECT: R-2408A

STATE OF NORTH CAROLINA
 DIVISION OF HIGHWAYS
 PLAN FOR PROPOSED
 HIGHWAY EROSION CONTROL
 MACON COUNTY

**LOCATION: SR 1323 (RIVERVIEW ST.)
 FROM DEPOT ST. EXTENSION TO NC 28**
TYPE OF WORK: GRADING, DRAINAGE, WIDENING, AND PAVING



STATE	STATE PROJECT REFERENCE NO.	SHEET NO.	TOTAL SHEETS
N.C.	R-2408A	EC-1	
STATE PROJ. NO.	F.A. PROJ. NO.	DESCRIPTION	

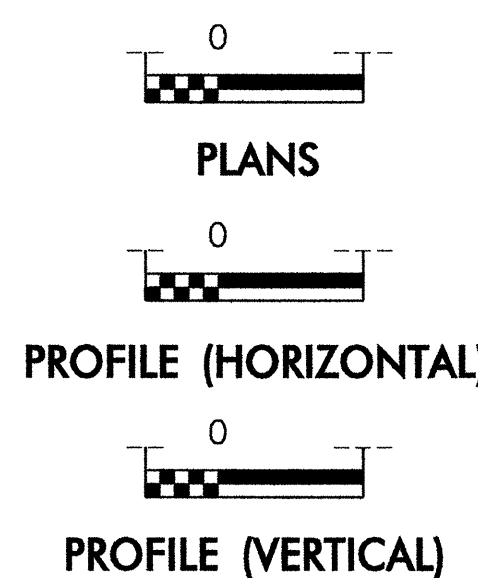
EROSION AND SEDIMENT CONTROL MEASURES

Std. #	Description	Symbol
	Streambank Reforestation.....	
1630.03	Temporary Silt Ditch.....	
1630.05	Temporary Diversion.....	
1605.01	Temporary Silt Fence.....	
1606.01	Special Sediment Control Fence.....	
1622.01	Temporary Berms and Slope Drains.....	
1630.01	Riser Basin.....	
1630.02	Silt Basin Type B.....	
1633.01	Temporary Rock Silt Check Type-A.....	
	Temporary Rock Silt Check Type-B.....	
1634.01	Temporary Rock Sediment Dam Type-A.....	
1634.02	Temporary Rock Sediment Dam Type-B.....	
1635.01	Rock Pipe Inlet Sediment Trap Type-A.....	
1635.02	Rock Pipe Inlet Sediment Trap Type-B.....	
1630.04	Stilling Basin.....	
	Rock Inlet Sediment Trap:	
1632.01	Type A.....	
1632.02	Type B.....	
1632.03	Type C.....	
	Skimmer Basin.....	
	Tiered Skimmer Basin.....	

THIS PROJECT HAS BEEN DESIGNED TO SENSITIVE WATERSHED STANDARDS.

ENVIRONMENTALLY SENSITIVE AREA(S) EXIST ON THIS PROJECT
 Refer To E. C. Special Provisions for Special Considerations.

GRAPHIC SCALE



ROADSIDE ENVIRONMENTAL UNIT
 DIVISION OF HIGHWAYS
 STATE OF NORTH CAROLINA

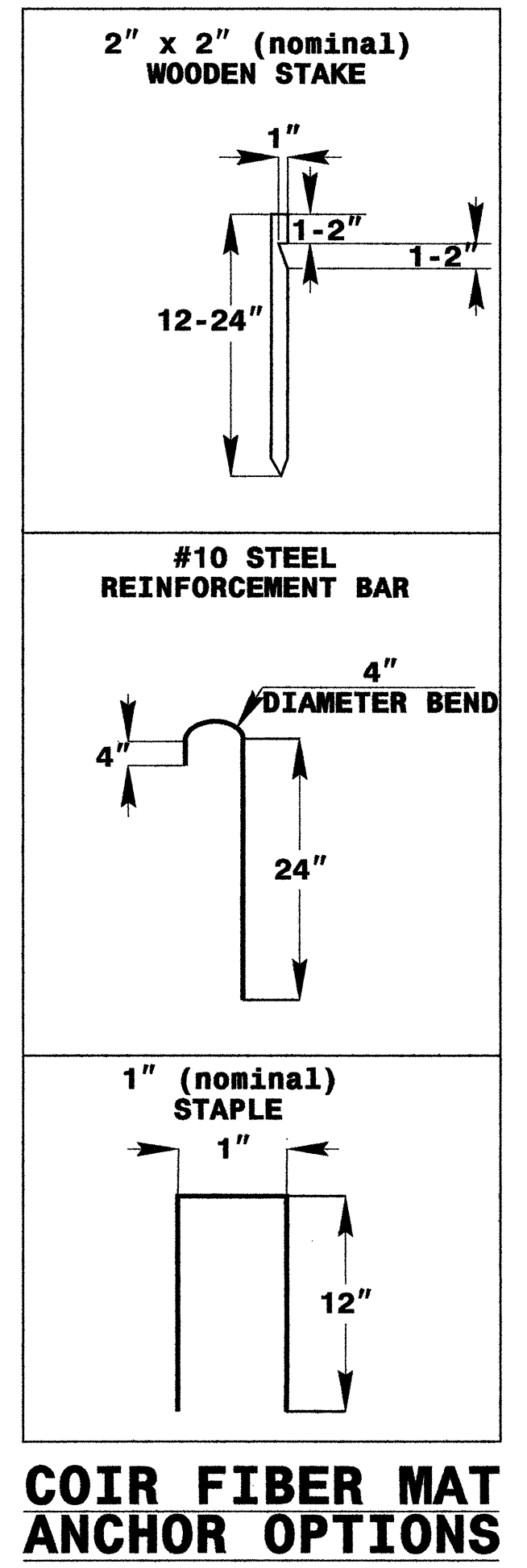
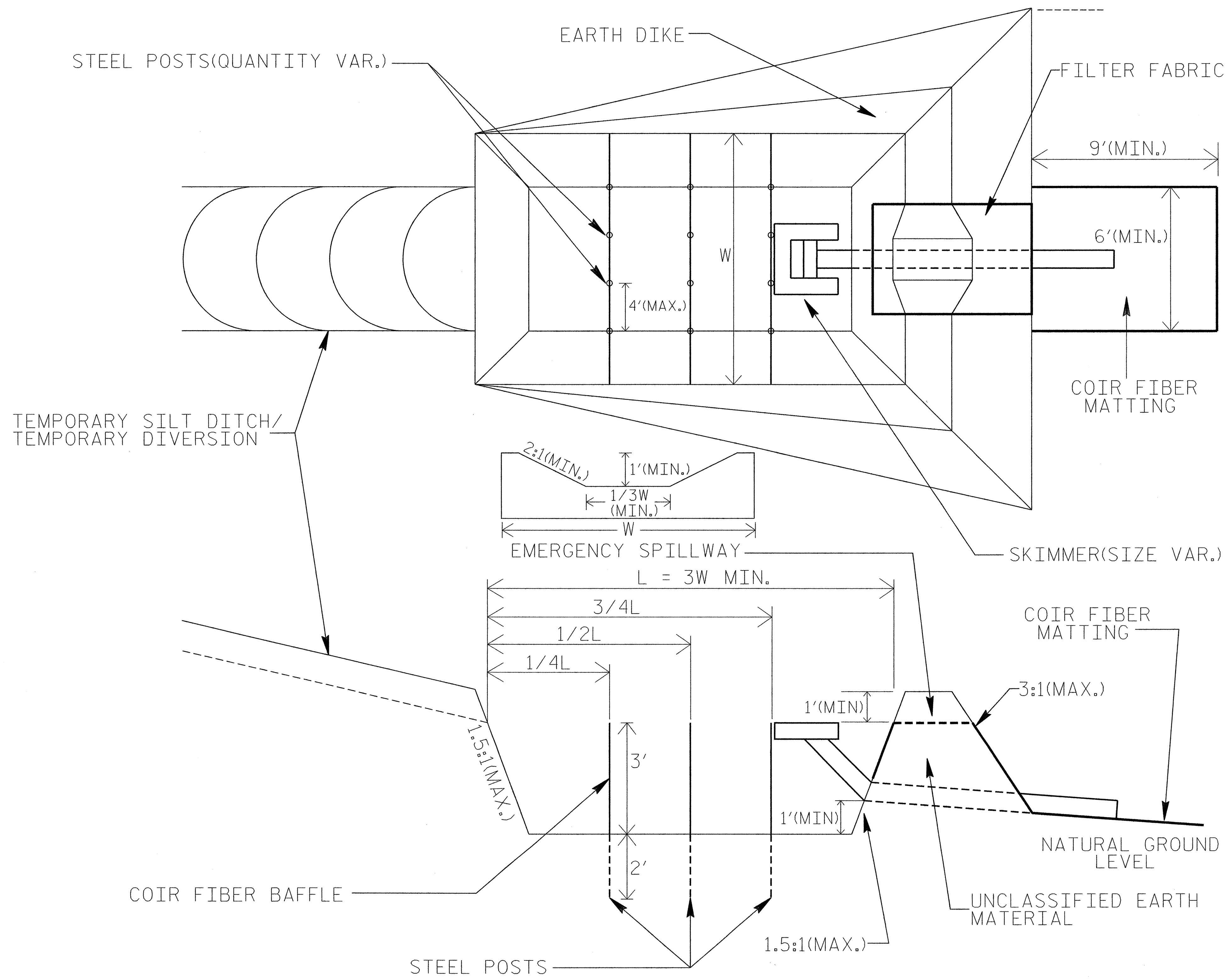
Prepared In the Office of:
DIVISION 14 DDC UNIT
 253 Webster Road
 Sylva, NC 28779
2006 STANDARD SPECIFICATIONS

Roadway Standard Drawings
 The following roadway english standards as appear in "Roadway Standard Drawings"-- Roadway Design Unit - N. C. Department of Transportation - Raleigh, N. C., dated July 18, 2006 and the latest revision thereto are applicable to this project and by reference hereby are considered a part of these plans.
 1605.01 Temporary Silt Fence
 1606.01 Special Sediment Control Fence
 1622.01 Guide for Temporary Berms and Slope Drains
 1630.03 Temporary Silt Ditch
 1630.05 Temporary Diversion
 1632.03 Rock Inlet Sediment Trap Type 'C'
 1633.01 Temporary Rock Silt Check Type 'A'
 1635.02 Rock Pipe Inlet Sediment Trap Type 'B'

1: r:\m\2408a\y06\p13\1102298602\2408a_tsh_erosion.dgn

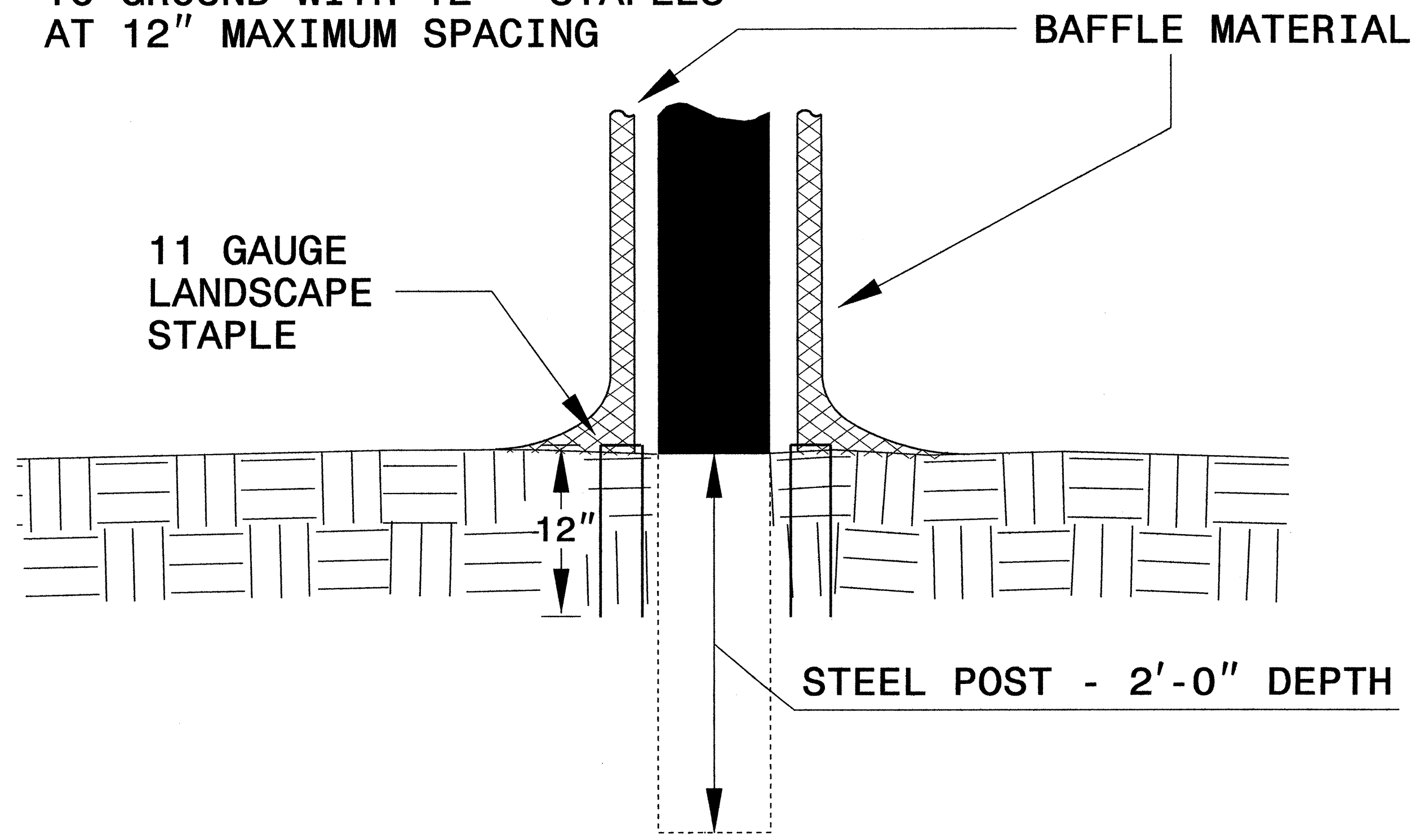
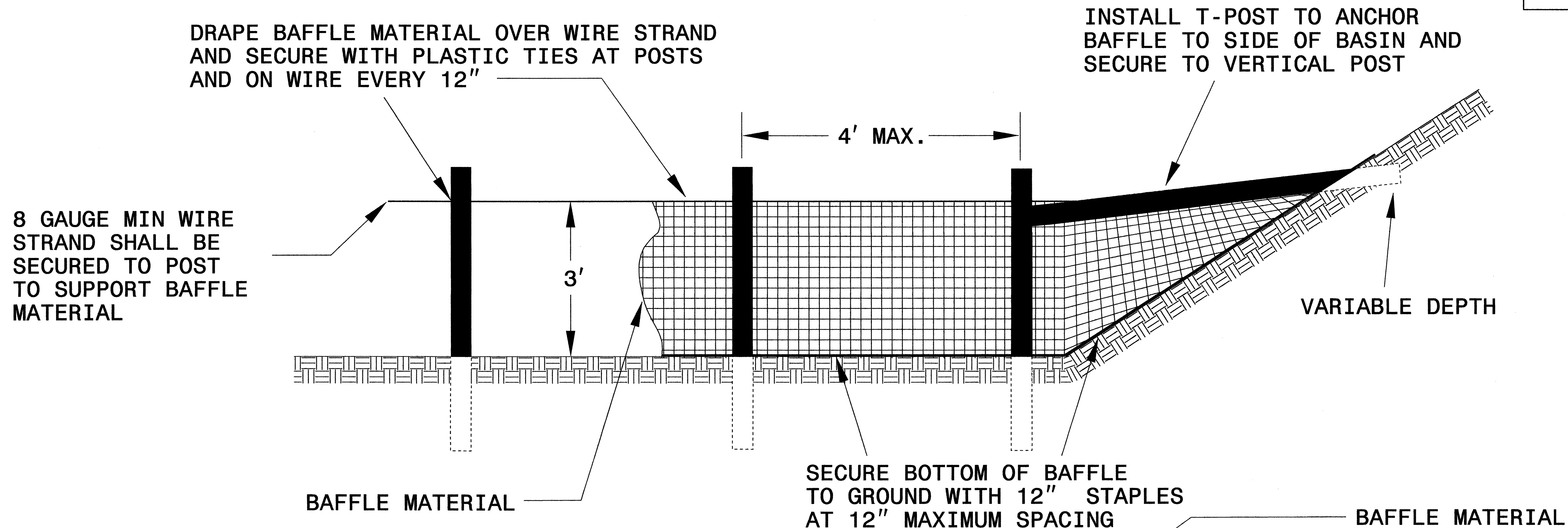
SKIMMER BASIN WITH BAFFLES DETAIL

PROJECT REFERENCE NO. R-2408A	SHEET NO. EC-2
ROADWAY DESIGN ENGINEER	HYDRAULICS ENGINEER



PROJECT REFERENCE NO. R-2408A	SHEET NO. EC-2A
RW SHEET NO.	
ROADWAY DESIGN ENGINEER	HYDRAULICS ENGINEER

COIR FIBER BAFFLE DETAIL

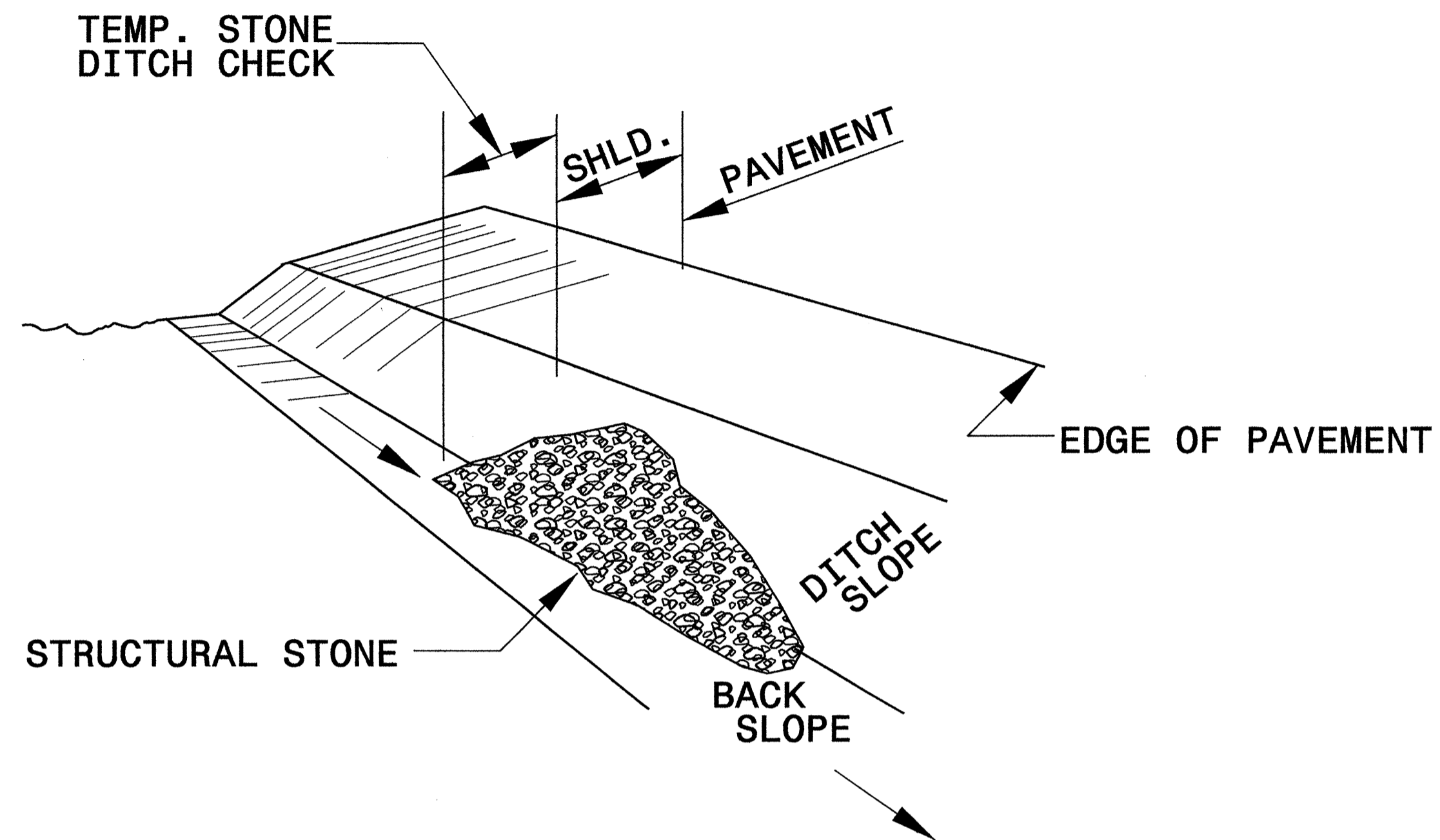


NOTE: INSTALL THREE(3) COIR FIBER BAFFLES IN SILT BASINS AND SEDIMENT DAMS AT DRAINAGE OUTLETS WITH A SPACING OF 1/4 THE BASIN LENGTH. TWO(2) COIR FIBER BAFFLES CAN BE INSTALLED IN SILT BASINS LESS THAN 20 FT. IN LENGTH WITH A SPACING OF 1/3 THE BASIN LENGTH.

BAFFLE MATERIAL SHALL BE SECURED TO THE BOTTOM AND SIDES OF BASIN USING 12" LANDSCAPE STAPLES

PROJECT REFERENCE NO. R-2408A	SHEET NO. EC-2B
RAW SHEET NO.	
ROADWAY DESIGN ENGINEER	HYDRAULICS ENGINEER

TEMPORARY ROCK SILT CHECK TYPE 'B' DETAIL

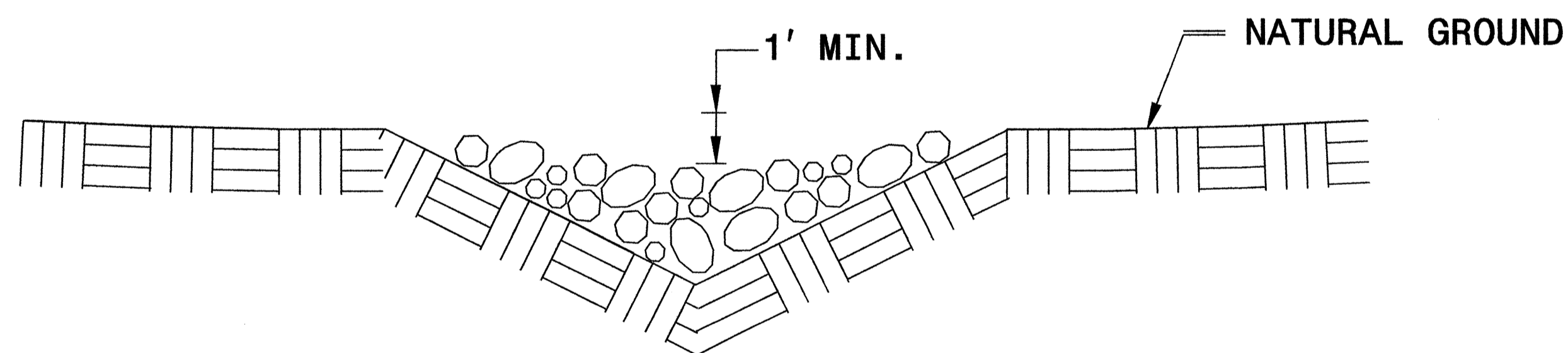


ISOMETRIC VIEW

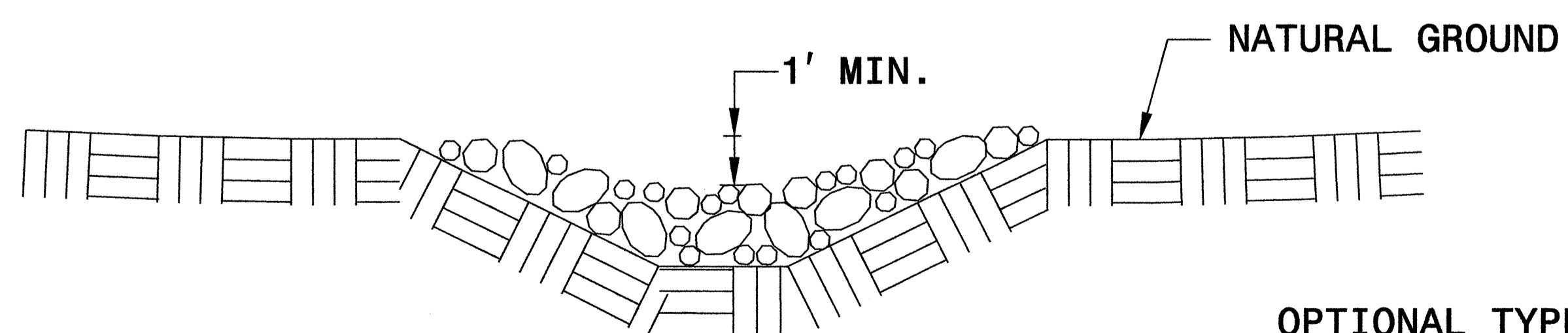
NOTES:

USE CLASS 'B' EROSION CONTROL STONE FOR STRUCTURAL STONE.

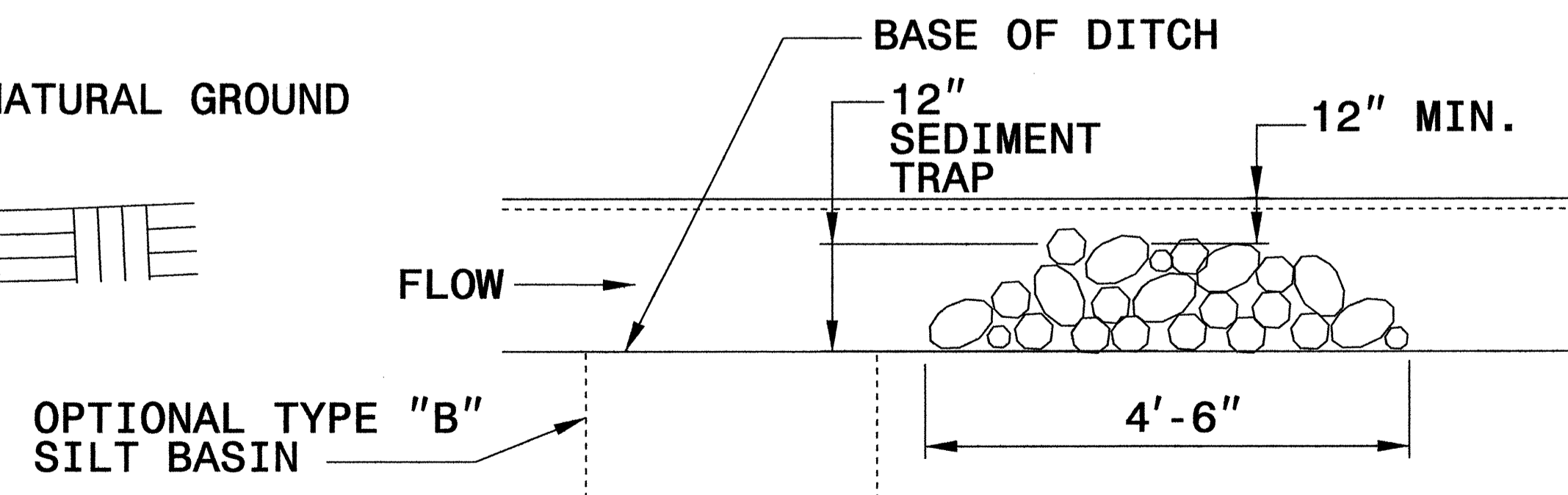
THE ENGINEER MAY DIRECT THE OPTION OF CLASS "A" STONE FOR SITES HAVING LESS THAN ONE (1) ACRE DRAINAGE AREA AND A DITCH GRADE LESS THAN 3%.



**CROSS SECTION
VEE DITCH**



**CROSS SECTION
TRAPEZOIDAL DITCH**



ELEVATION VIEW

DIVISION OF HIGHWAYS
STATE OF NORTH CAROLINA

PROJECT REFERENCE NO. <i>R-2408A</i>	SHEET NO. <i>EC-3</i>
ROADWAY DESIGN ENGINEER	HYDRAULICS ENGINEER

SOIL STABILIZATION SUMMARY SHEET

MATTING FOR EROSION CONTROL

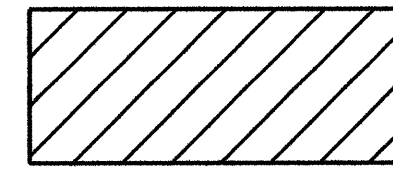
PERMANENT SOIL REINFORCEMENT MAT

CONST SHEET NO.	LINE	FROM STATION	TO STATION	SIDE	ESTIMATE (SY)
DITCHLINE MATTING					
4	-LREV-	10+00	12+25	LT	50
4	-LREV-	18+25	18+80	LT	10
5	-LREV-	25+50	27+60	LT	50
5	-LREV-	32+50	35+27	LT	60
7	-LREV-	51+75	55+50	RT	80
7	-YI-	13+63	16+20	RT	60
			SUBTOTAL		310
BERM MATTING					
5	-LREV-	33+00	33+50	LT	25
7	-LREV-	52+50	53+50	LT	40
7	-LREV-	56+00	56+50	LT	25
			SUBTOTAL		90
			SUBTOTAL		400
MISCELLANEOUS MATTING TO BE INSTALLED AS DIRECTED BY THE ENGINEER					2640
TOTAL					3070
SAY					4000

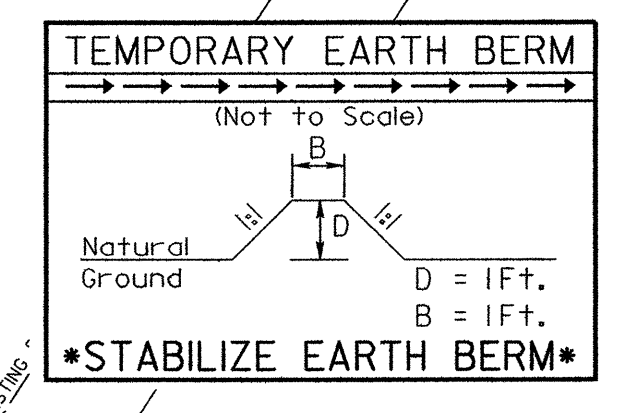
CONST SHEET NO.	LINE	FROM STATION	TO STATION	SIDE	ESTIMATE (SY)
DITCHLINE MAT					
7	-LREV-	55+00	55+50	RT	135
7	-LREV-	56+00	56+50	RT	135
			SUBTOTAL		270
BERM MAT					
4	-LREV-	10+00	13+50	LT	180
4	-LREV-	16+00	17+00	LT	60
5	-LREV-	25+50	27+50	LT	115
5	-LREV-	30+00	34+00	LT	180
6	-LREV-	35+00	36+00	LT	50
6	-LREV-	38+50	41+00	LT	180
6	-LREV-	43+00	45+00	RT	105
7	-LREV-	52+00	52+50	RT	25
7	-LREV-	53+50	56+00	RT	120
7	-YI-	13+25	16+00	RT	110
			SUBTOTAL		1125
			SUBTOTAL		1395
			ADDITIONAL PSRM TO BE INSTALLED		140
			TOTAL		1535
			SAY		1600

PROJECT REFERENCE NO. R-2408A	SHEET NO. EC-5/CONST.5
RW SHEET NO.	
ROADWAY DESIGN ENGINEER	HYDRAULICS ENGINEER

NOTE: PERIMETER EROSION CONTROL MEASURES SHALL BE INSTALLED DURING CLEARING AND GRUBBING PHASE.

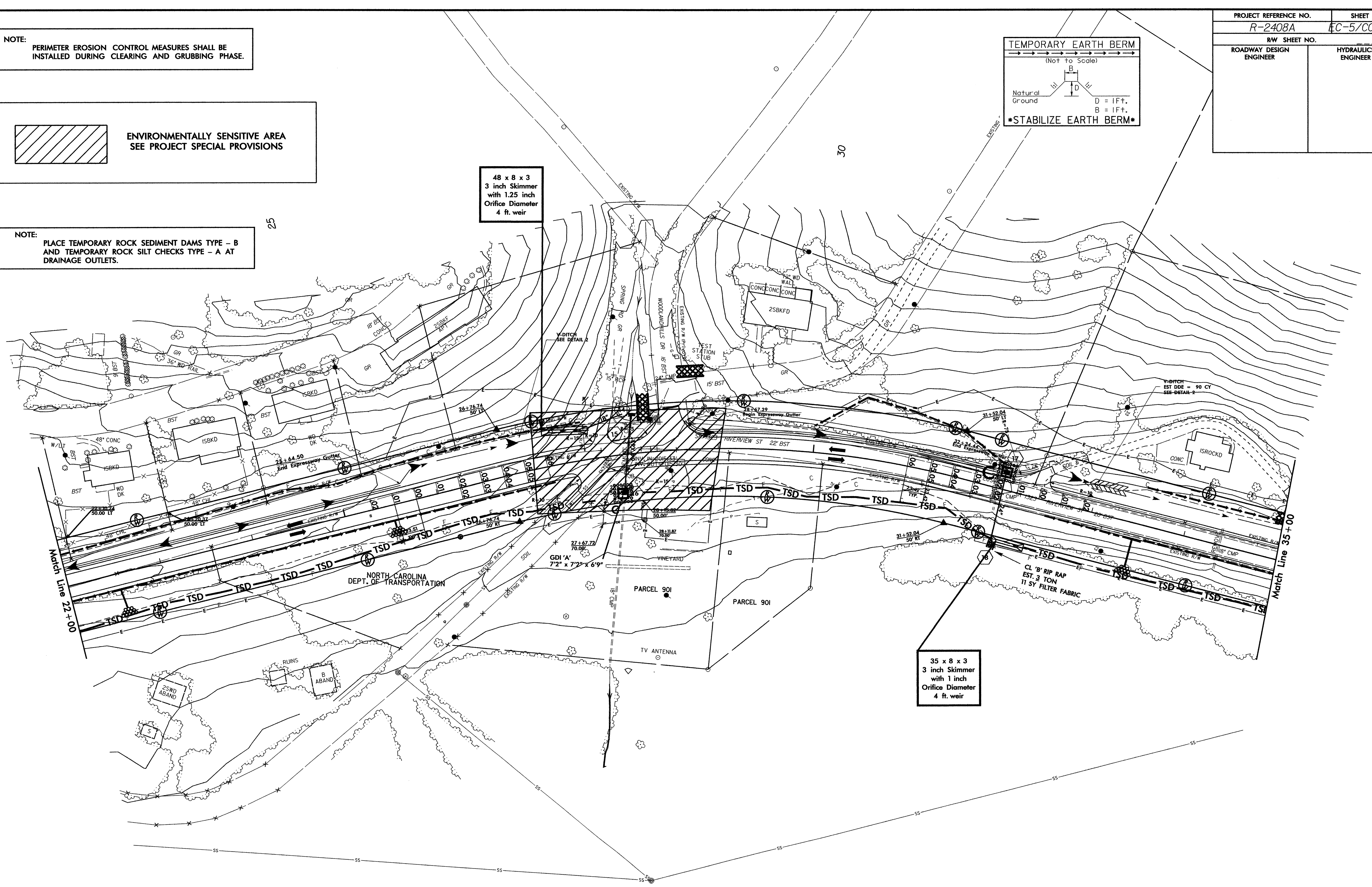
 ENVIRONMENTALLY SENSITIVE AREA
SEE PROJECT SPECIAL PROVISIONS

NOTE: PLACE TEMPORARY ROCK SEDIMENT DAMS TYPE - B AND TEMPORARY ROCK SILT CHECKS TYPE - A AT DRAINAGE OUTLETS.



48 x 8 x 3
3 inch Skimmer
with 1.25 inch
Orifice Diameter
4 ft. weir

35 x 8 x 3
3 inch Skimmer
with 1 inch
Orifice Diameter
4 ft. weir



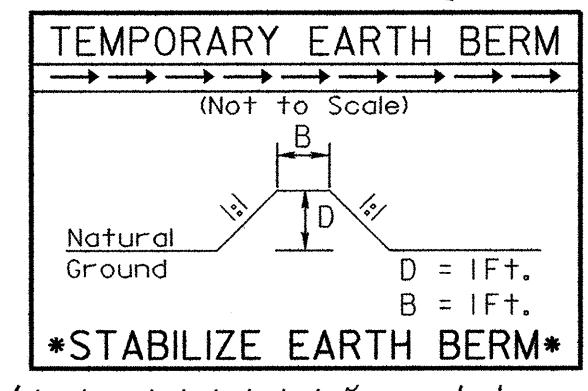
8/17/99

PROJECT REFERENCE NO. R-2408A		SHEET NO. EC-6/CONST.6	
RW SHEET NO.			
ROADWAY DESIGN ENGINEER		HYDRAULICS ENGINEER	

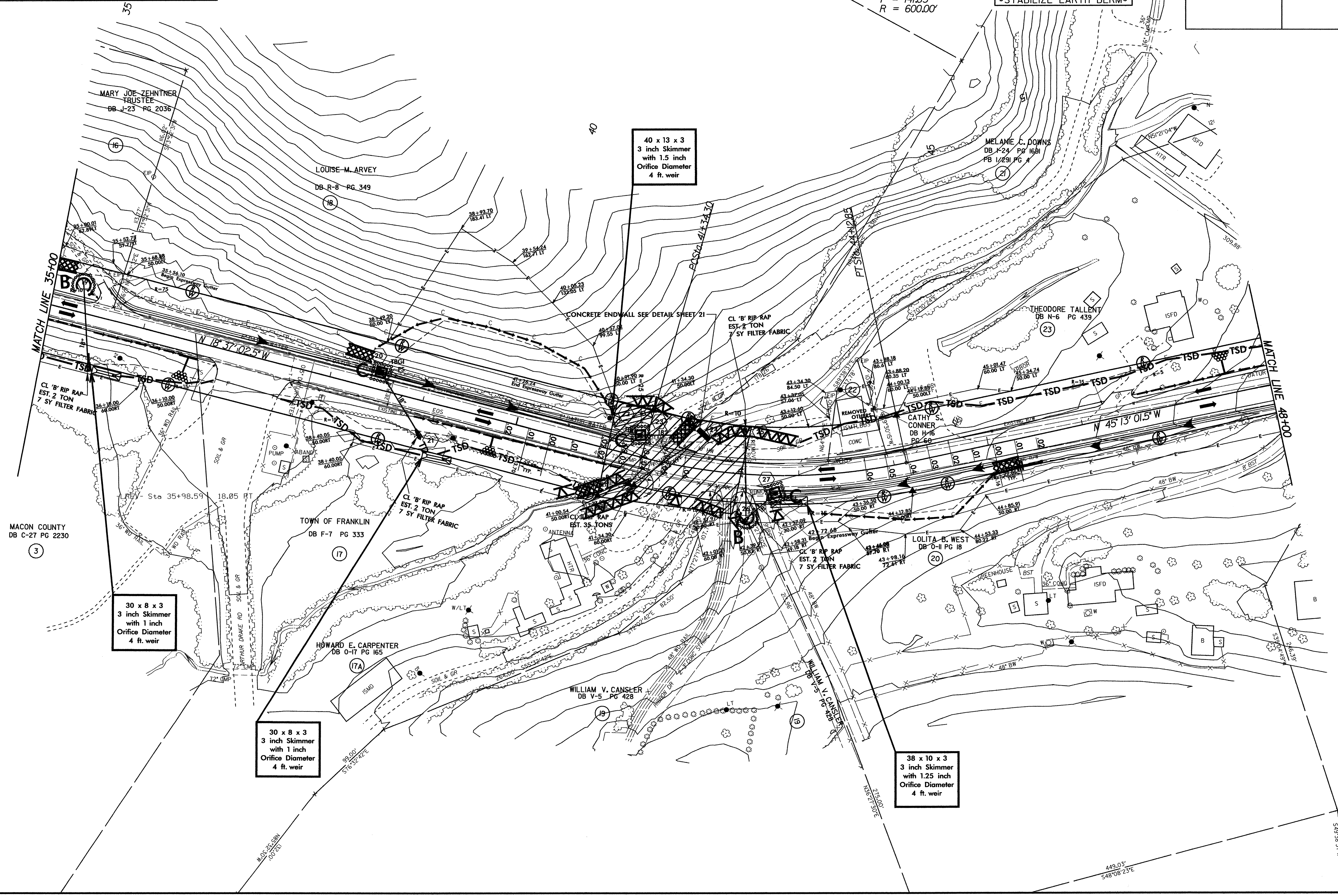
NOTE: PERIMETER EROSION CONTROL MEASURES SHALL BE INSTALLED DURING CLEARING AND GRUBBING PHASE.

NOTE: PLACE TEMPORARY ROCK SEDIMENT DAMS TYPE - B AND TEMPORARY ROCK SILT CHECKS TYPE - A AT DRAINAGE OUTLETS.

 ENVIRONMENTALLY SENSITIVE AREA
SEE PROJECT SPECIAL PROVISIONS



PI Sta 42+76.13
 $\Delta = 26^\circ 35' 59.0''$ (LT)
 D = 9' 32' 57.5"
 L = 278.55'
 T = 141.83'
 R = 600.00'



40 x 13 x 3
 3 inch Skimmer
 with 1.5 inch
 Orifice Diameter
 4 ft. weir

30 x 8 x 3
 3 inch Skimmer
 with 1 inch
 Orifice Diameter
 4 ft. weir

30 x 8 x 3
 3 inch Skimmer
 with 1 inch
 Orifice Diameter
 4 ft. weir

38 x 10 x 3
 3 inch Skimmer
 with 1.25 inch
 Orifice Diameter
 4 ft. weir

MACON COUNTY
 DB C-27 PG 2230

TOWN OF FRANKLIN
 DB F-7 PG 333

HOWARD E. CARPENTER
 DB O-17 PG 165

WILLIAM V. CANSLER
 DB V-5 PG 428

LOLITA B. WEST
 DB O-II PG 18

CATHY S. CONNER
 DB H-16 PG 66

THEODORE TALLENT
 DB N-6 PG 439

MELAMIE C. DOWNS
 DB I-24 PG 1681
 PB 1/291 PG 4

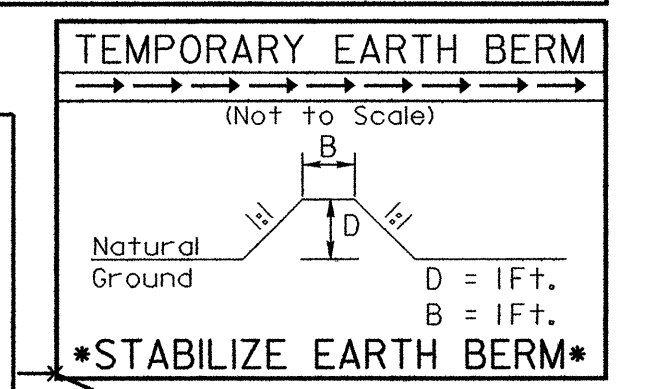
LOUISE M. ARVEY
 DB R-8 PG 349

MARY JOE ZEHNTNER
 TRUSTEE
 DB J-23 PG 2036

PROJECT REFERENCE NO. R-2408A		SHEET NO. EC-7/CONST.7	
RW SHEET NO.			
ROADWAY DESIGN ENGINEER		HYDRAULICS ENGINEER	

NOTE: PERIMETER EROSION CONTROL MEASURES SHALL BE INSTALLED DURING CLEARING AND GRUBBING PHASE.

NOTE: PLACE TEMPORARY ROCK SEDIMENT DAMS TYPE - B AND TEMPORARY ROCK SILT CHECKS TYPE - A AT DRAINAGE OUTLETS.



PI Sta 10+63.83 Y1
Δ = 36' 59" 28.0" (LT)
D = 57' 17" 44.8"
L = 64.56'
T = 33.45'
R = 100.00'

PI Sta 14+11.08 Y1
Δ = 26' 27" 38.8" (RT)
D = 9' 32" 57.5"
L = 277.0'
T = 141.06'
R = 600.00'

PI Sta 49+74.48
Δ = 2' 00" 16.3" (RT)
D = 4' 46" 28.7"
L = 41.98'
T = 20.99'
R = 1,200.00'

PI Sta 58+09.32
Δ = 34' 28" 15.7" (RT)
D = 7' 09" 43.1"
L = 481.31'
T = 248.18'
R = 800.00'

ENVIRONMENTALLY SENSITIVE AREA
SEE PROJECT SPECIAL PROVISIONS

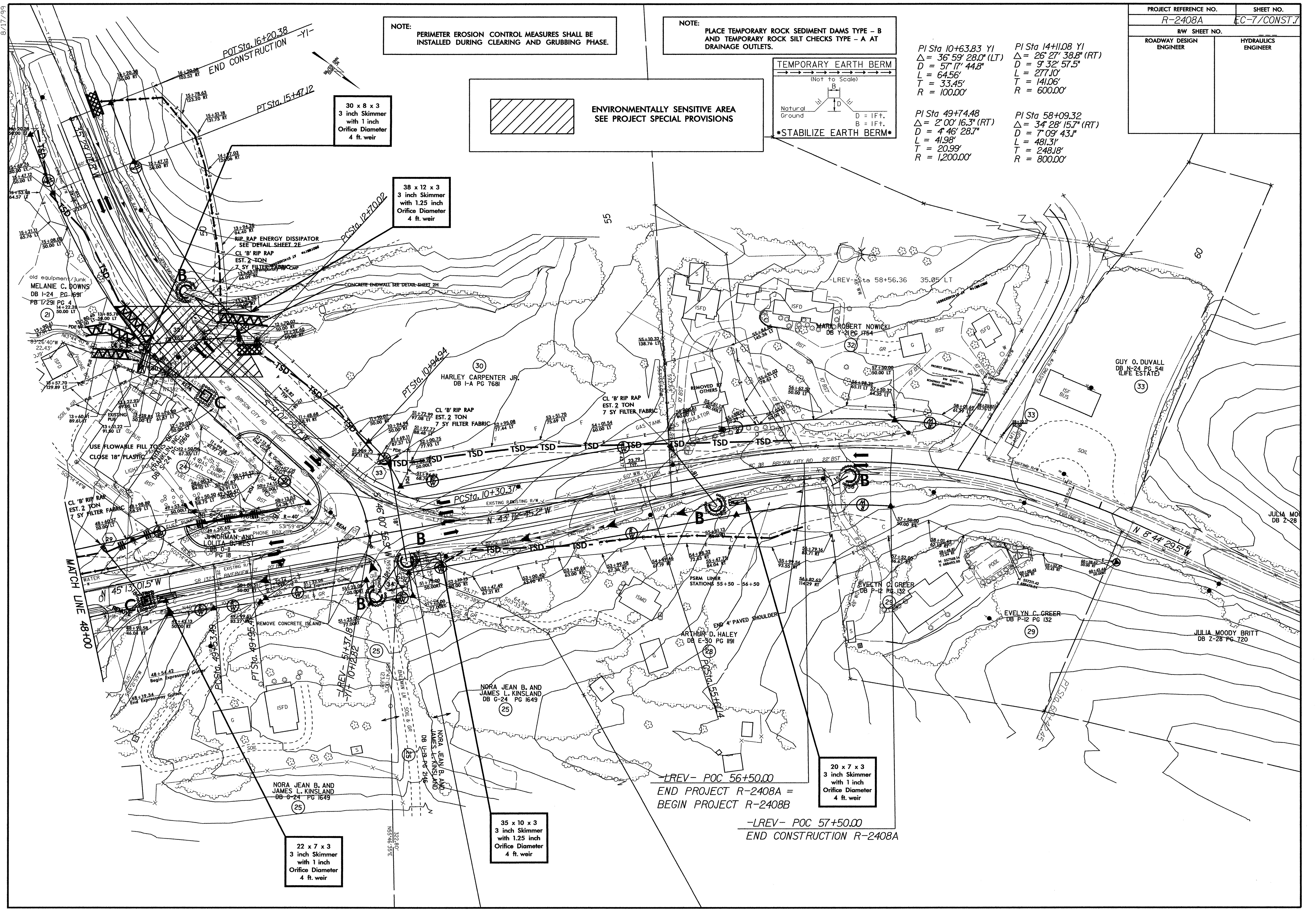
30 x 8 x 3
3 inch Skimmer
with 1 inch
Orifice Diameter
4 ft. weir

38 x 12 x 3
3 inch Skimmer
with 1.25 inch
Orifice Diameter
4 ft. weir

20 x 7 x 3
3 inch Skimmer
with 1 inch
Orifice Diameter
4 ft. weir

35 x 10 x 3
3 inch Skimmer
with 1.25 inch
Orifice Diameter
4 ft. weir

22 x 7 x 3
3 inch Skimmer
with 1 inch
Orifice Diameter
4 ft. weir



8/17/99