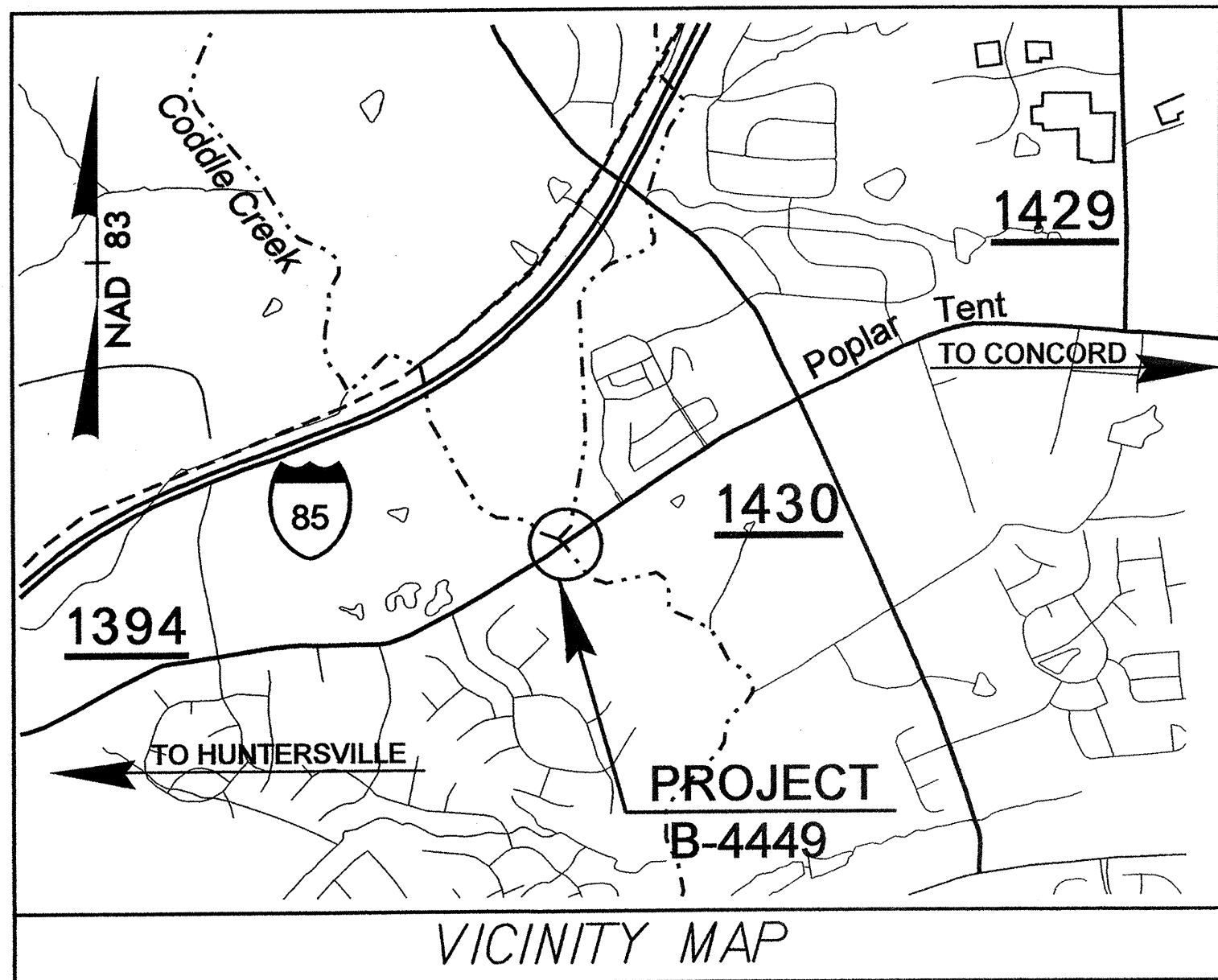


PROJECT: B-4449

STATE	PROJECT NO.	SHEET NO.
N.C.	B-4449	Sig. 1
F.A. PROJ. NO.		
PROJECT ID. NO.		

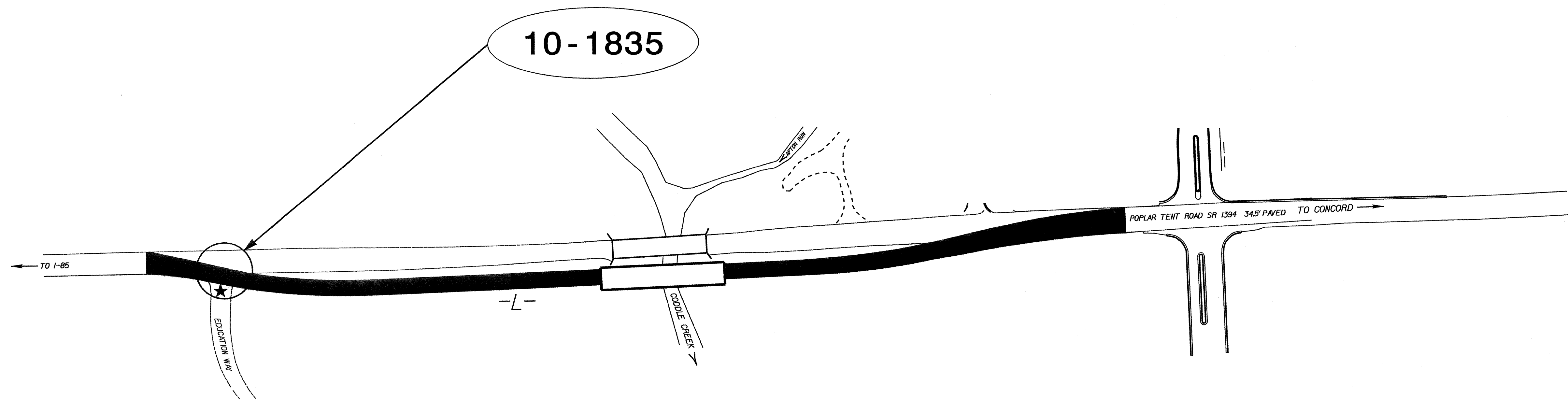
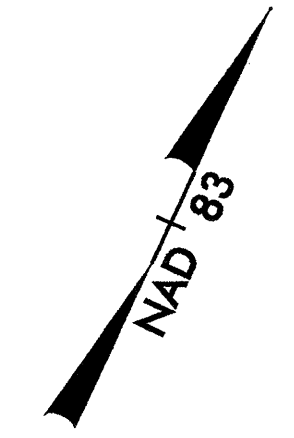


STATE OF NORTH CAROLINA
DIVISION OF HIGHWAYS

CABARRUS COUNTY

LOCATION: BRIDGE NO. 2 OVER CODDLE CREEK ON SR 1394 (POPLAR TENT ROAD)

TYPE OF WORK: TRAFFIC SIGNALS



INDEX OF PLANS

SHEET NO.	SIGNAL INVENTORY NO.	LOCATION / DESCRIPTION
SIG. 1	N/A	Title Sheet
SIG. 2-3	10-1835	SR 1394 (Poplar Tent Road) at Education Way
SIG. 4-6	N/A	Inductive Detection Loops Details

LEGEND

##-#### SIGNAL INVENTORY NUMBER

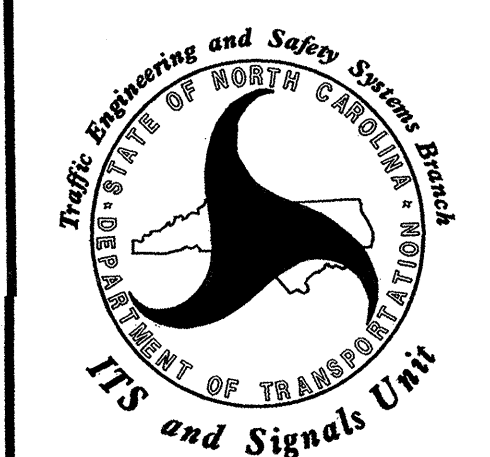
NCDOT CONTACTS:

INTELLIGENT TRANSPORTATION SYSTEMS & SIGNALS UNIT

Timothy J. Williams, PE - S&G Contracts Engineer

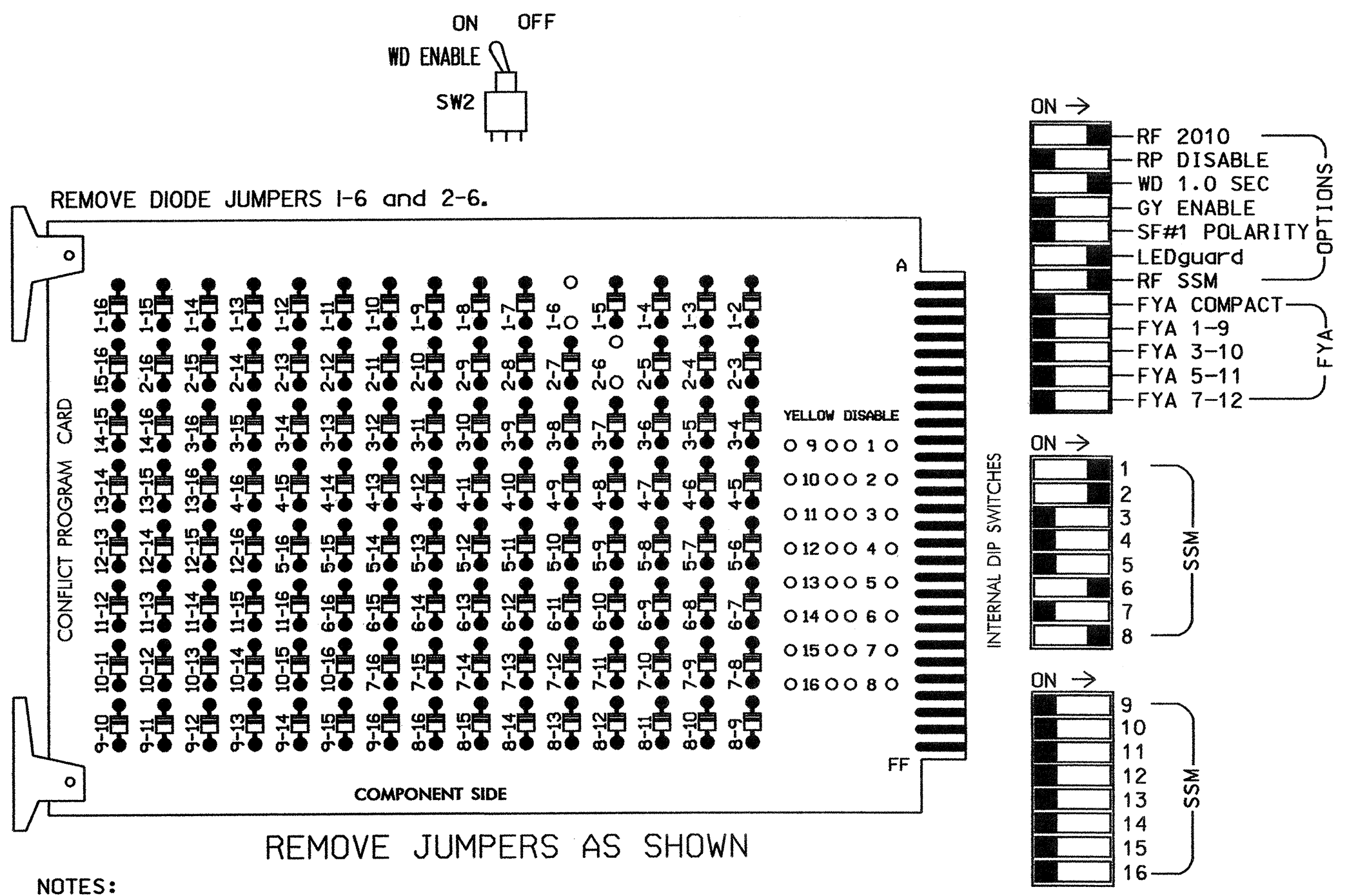
George C. Brown, PE - Signal Equipment Design Engineer

Prepared in the Offices of:



750 N. Greenfield Parkway, Garner, NC 27529

EDI MODEL 2010ECL-NC CONFLICT MONITOR PROGRAMMING DETAIL
(remove jumpers and set switches as shown)



- NOTES:
- Card is provided with all diode jumpers in place. Removal of any jumper allows its channels to run concurrently.
 - Make sure jumpers SEL2-SEL5 are present on the monitor board.

NOTES

- To prevent "flash-conflict" problems, insert red flash program blocks for all unused vehicle load switches in the output file. The installer shall verify that signal heads flash in accordance with the Signal Plans.
- Ensure that Red Enable is active at all times during normal operation. To prevent Red Failures on unused monitor channels, tie unused red monitor inputs 3,4,5,7,9, 10,11,12,13,14,15 & 16 to load switch AC+ per the cabinet manufacturer's instructions.
- Program phases 2 and 6, on the controller unit, for Start Up In Green.
- Enable Simultaneous Gap-Out, on the controller unit, for all phases.
- Program phases 2 and 6, on the controller unit, for Variable Initial and Gap Reduction.

EQUIPMENT INFORMATION

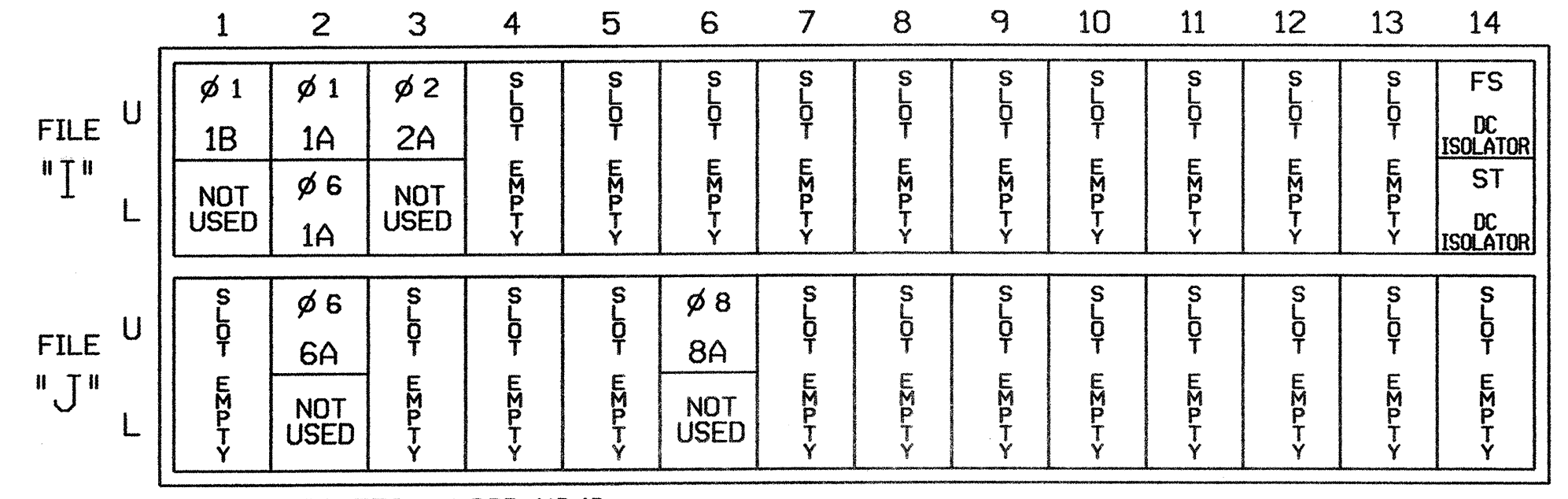
CONTROLLER.....CONTRACTOR SUPPLIED 2070L
 CABINET.....CONTRACTOR SUPPLIED 332
 SOFTWARE.....ECONOLITE OASIS
 CABINET MOUNT.....BASE
 OUTPUT FILE POSITIONS...12
 LOAD SWITCHES USED.....S1,S2,S6,S8
 PHASES USED.....1,2,6,8
 OVERLAPS.....NONE

SIGNAL HEAD HOOK-UP CHART

LOAD SWITCH NO.	S1	S2	S2P	S3	S4	S4P	S5	S6	S6P	S7	S8	S8P
PHASE	1	2	2 PED	3	4	4 PED	5	6	6 PED	7	8	8 PED
SIGNAL HEAD NO.	61,82	21,22	NU	NU	NU	NU	NU	61,62	NU	NU	81,82	NU
RED	*	128						134			107	
YELLOW		129						135			108	
GREEN		130						136			109	
RED ARROW												
YELLOW ARROW	126											
GREEN ARROW	127											

NU = Not Used
 * Denotes install load resistor. See load resistor installation detail this sheet.

INPUT FILE POSITION LAYOUT
(front view)



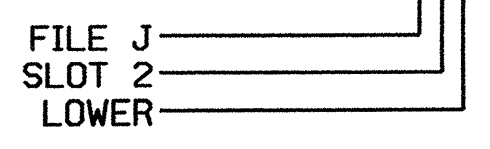
EX.: 1A, 2A, ETC. = LOOP NO.'S
 FS = FLASH SENSE
 ST = STOP TIME

INPUT FILE CONNECTION & PROGRAMMING CHART

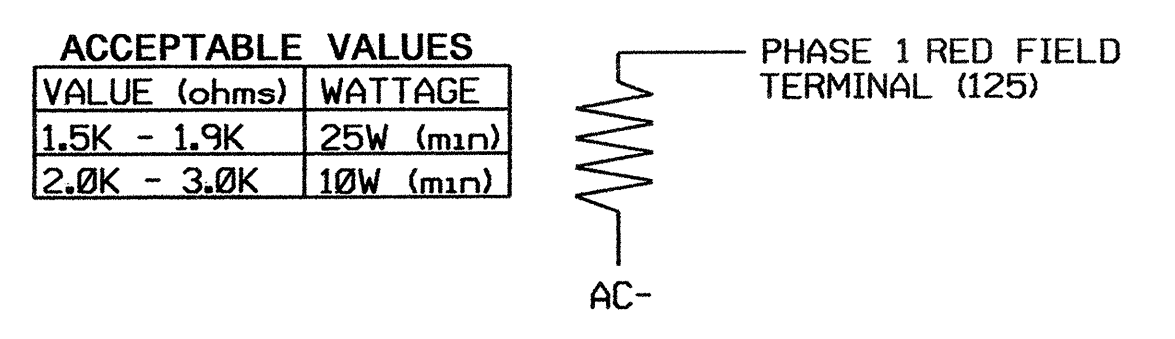
LOOP NO.	LOOP TERMINAL	INPUT FILE POS.	PIN NO.	INPUT ASSIGNMENT NO.	DETECTOR NO.	NEMA PHASE	CALL	EXTEND	FULL TIME DELAY	STRETCH TIME	DELAY TIME
1B	TB2-1,2	I1U	56	18	1	1	Y	Y			15
1A ¹	TB2-5,6	I2U	39	1	2	1	Y	Y			15
	TB2-7,8	I2L	43	5	12	6	Y	Y	Y		3
2A	TB2-9,10	I3U	63	25	32	2	Y	Y			
6A	TB3-5,6	J2U	40	2	6	6	Y	Y			
8A	TB5-9,10	J6U	42	4	8	8	Y	Y			3

¹Add jumpers from TB2-5 to TB2-7, and from TB2-6 to TB2-8.

INPUT FILE POSITION LEGEND: J2L



LOAD RESISTOR INSTALLATION DETAIL



ACCEPTABLE VALUES	
VALUE (ohms)	WATTAGE
1.5K - 1.9K	25W (min)
2.0K - 3.0K	10W (min)

NOTE: The purpose of this resistor is to load the channel red monitor inputs in order for the Signal Sequence Monitor to use the full signal sequence monitoring capability on channels that do not use the red display in the field.

THIS ELECTRICAL DETAIL IS FOR THE SIGNAL DESIGN: 10-1835
 DESIGNED: April 2008
 SEALED: 4-17-08
 REVISED: N.A.

Signal Upgrade

ELECTRICAL AND PROGRAMMING DETAILS FOR: SR 1394 (Poplar Tent Road) at Education Way

Division 10 Cabarrus County Concord

PLAN DATE: 4-10-08 REVIEWED BY: D.T. Joyce

PREPARED BY: D.H. Spaulding REVIEWED BY:

REVISIONS INIT. DATE

Signature: *D.H. Spaulding* 4/21/08

SIG. INVENTORY NO. 10-1835

17-APP-2008 15:14
 s:\17s\signal\work\groups\sig_mon\spaulding\10-1835_sml.e (a.2008.xx).dgn
 dspaulding

STATE OF NORTH CAROLINA
DEPT. OF TRANSPORTATION
DIVISION OF HIGHWAYS
RALEIGH, N.C.

5-07

ENGLISH DETAIL DRAWING FOR
INDUCTIVE DETECTION LOOPS

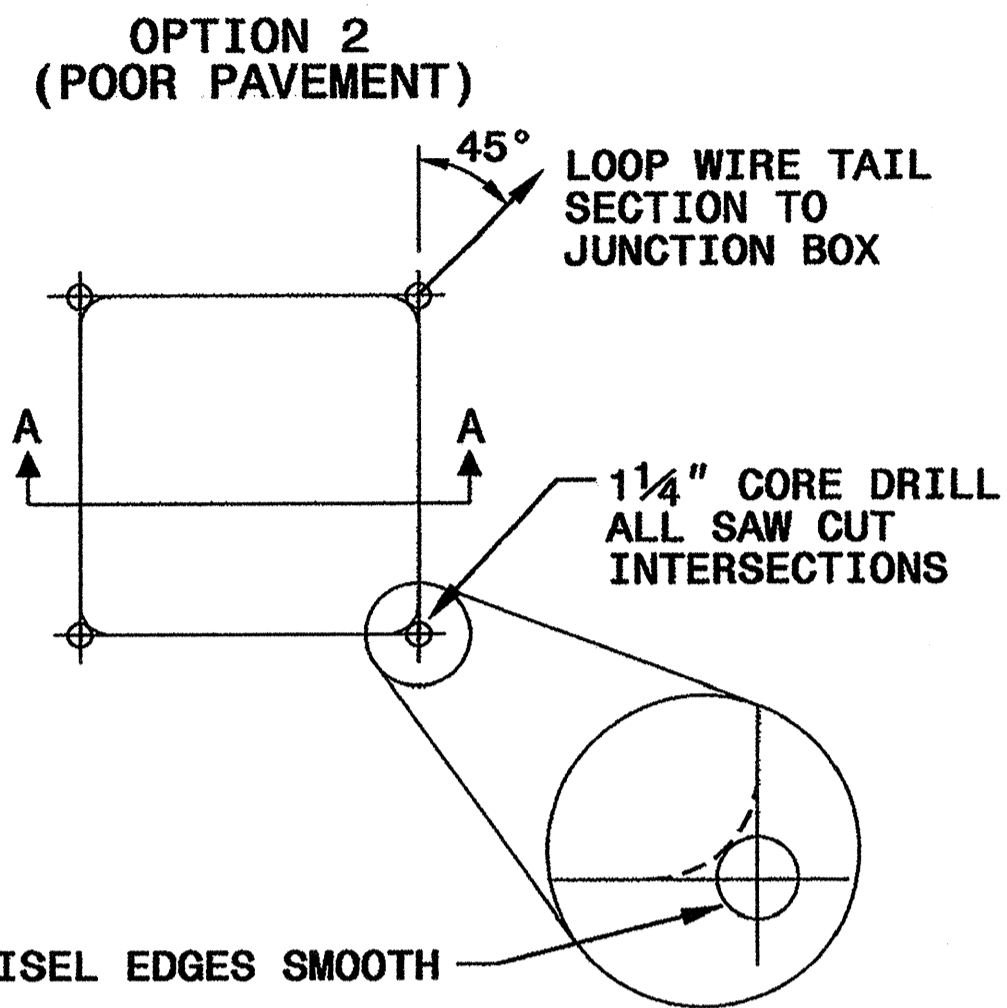
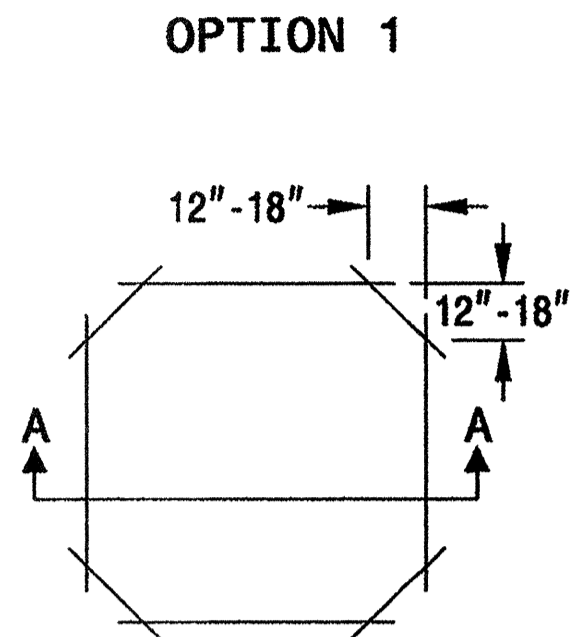
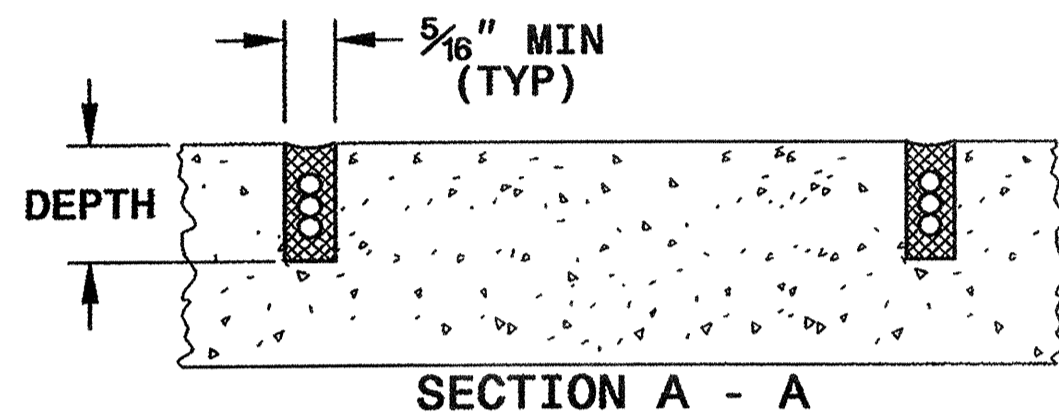
SHEET 1 OF 3
1725D01

CONVENTIONAL 4-SIDED LOOP

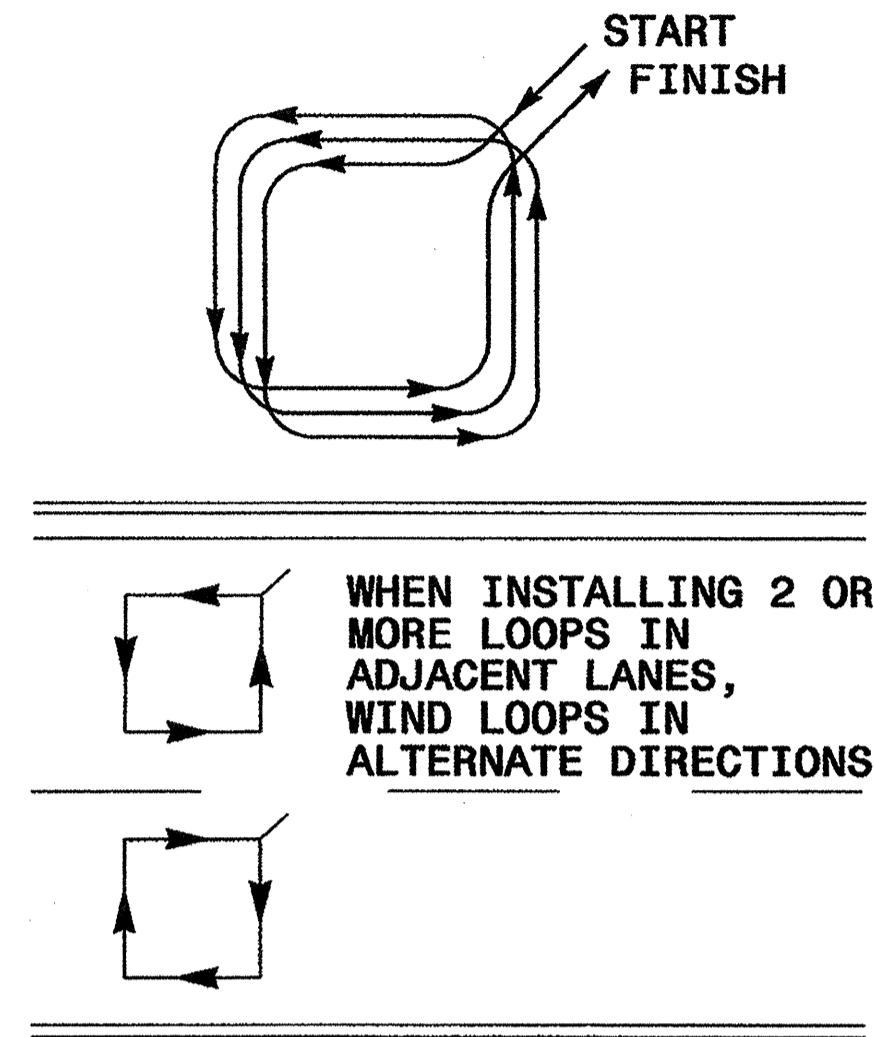
SAW CUT OPTIONS

SAW SLOT DEPTH CHART

DEPTH (IN)	NO. OF WIRE TURNS				
	2	3	4	5	6
CONCRETE	2.0	2.0	2.5	2.5	3.0
ASPHALT	2.0	2.5	3.0	3.0	3.0

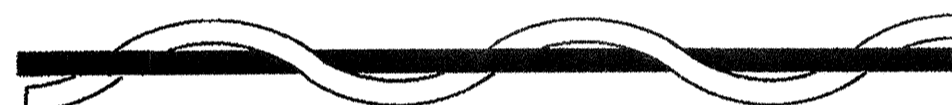


LOOP WINDING METHOD



LOOP WIRE TWISTING METHOD

INCORRECT WAY TO TWIST WIRE



CORRECT WAY TO TWIST WIRE

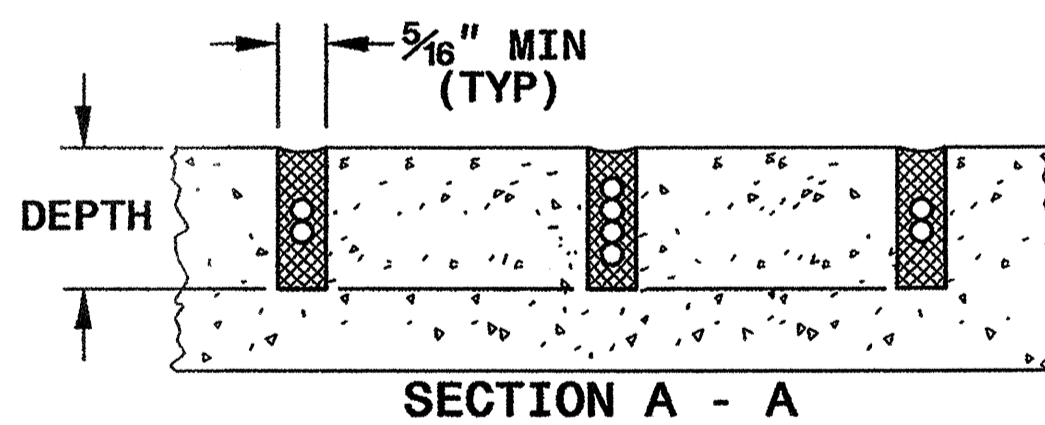
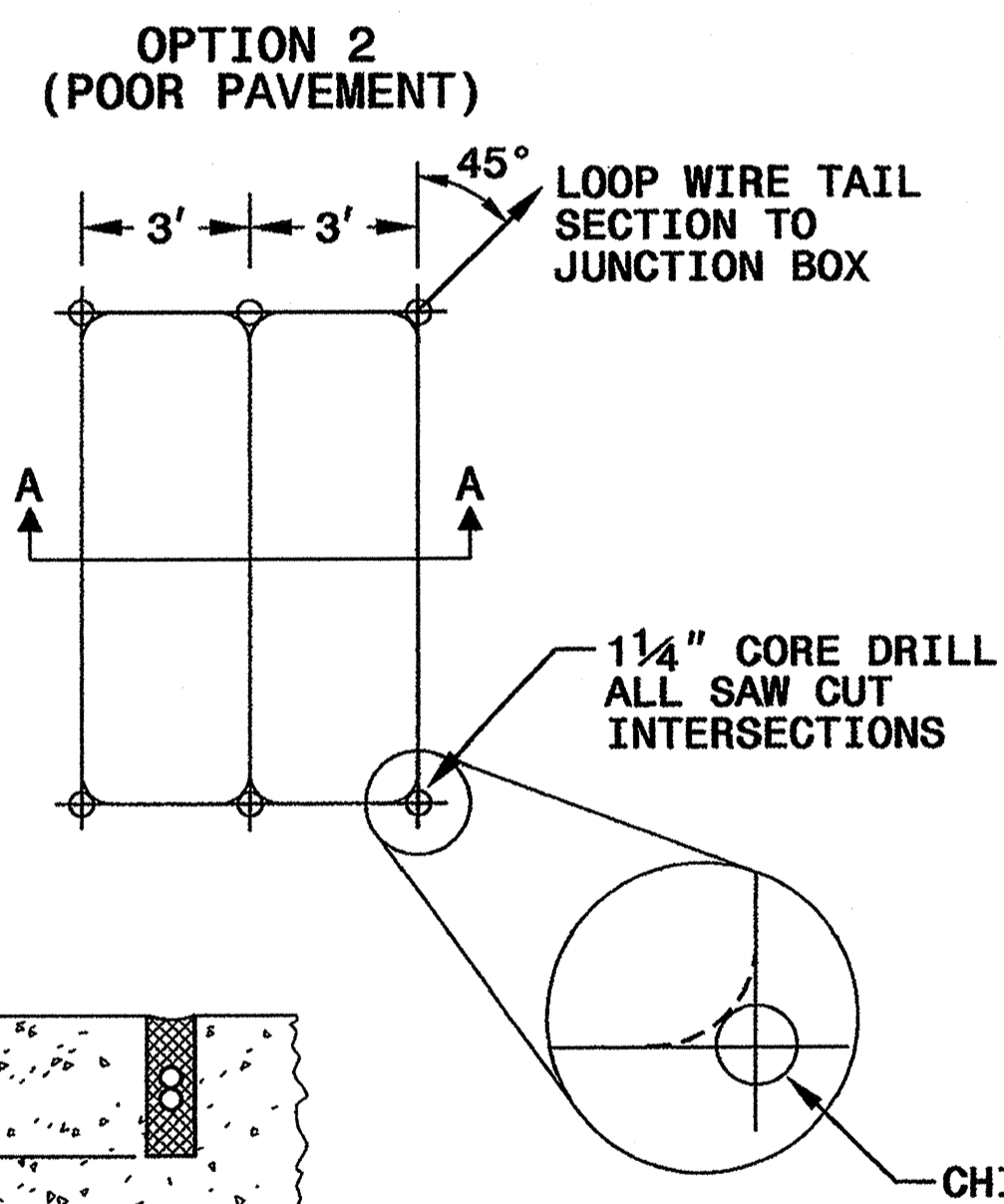
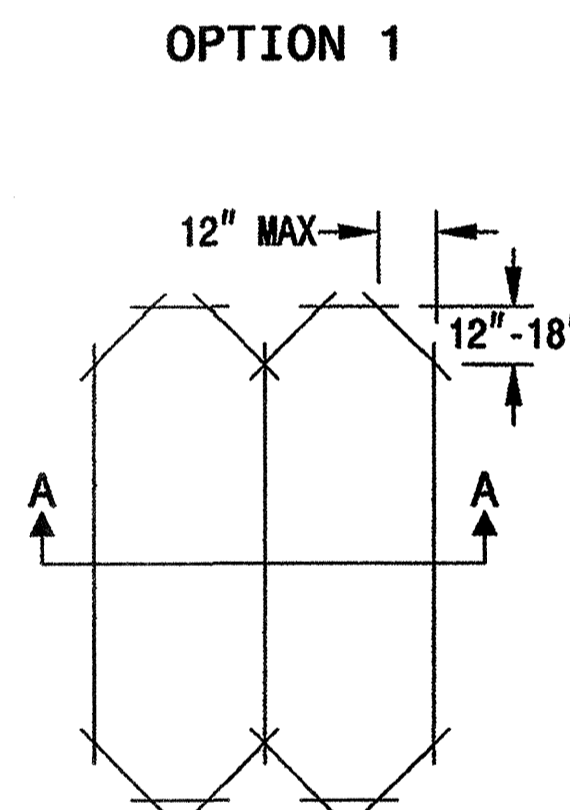


NOTES

- OVERLAP SAW CUTS AT CORNERS AND INTERSECTION POINTS TO ENSURE UNIFORM SAW SLOT DEPTH.
- MAINTAIN 12" SPACING BETWEEN LOOP WIRE TAIL SECTIONS.
- WIRE LOOPS CONNECTED TO THE SAME DETECTOR CHANNEL IN SERIES.
- LOCATE LOOPS IN CENTER OF LANES UNLESS OTHERWISE SHOWN ON PLANS OR APPROVED BY ENGINEER.

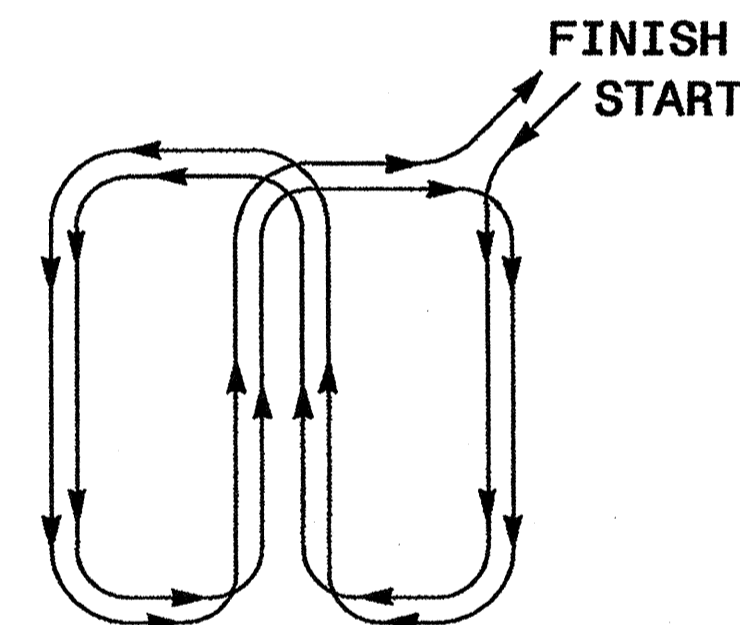
QUADRUPOLE LOOP

SAW CUT OPTIONS



DEPTH IS 2.5" FOR CONCRETE AND 3.0" FOR ASPHALT

LOOP WINDING METHOD



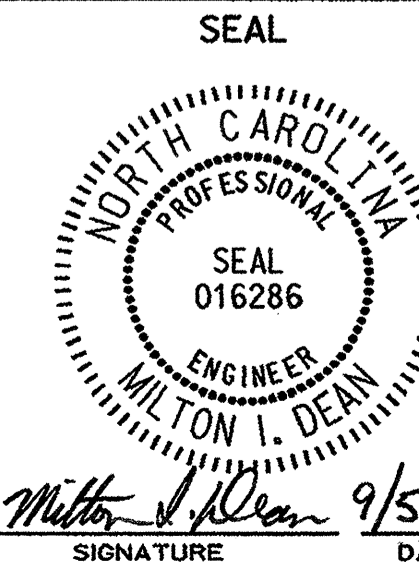
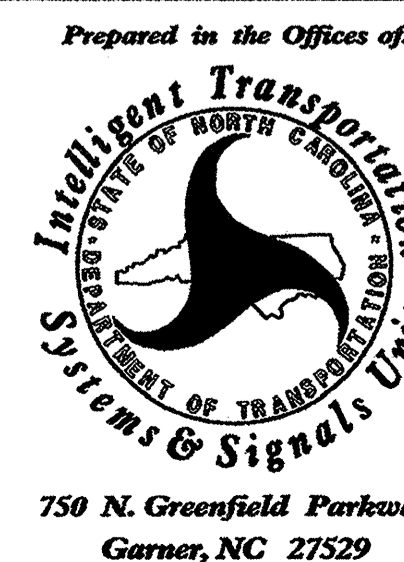
STATE OF NORTH CAROLINA
DEPT. OF TRANSPORTATION
DIVISION OF HIGHWAYS
RALEIGH, N.C.

5-07

ENGLISH DETAIL DRAWING FOR
INDUCTIVE DETECTION LOOPS

SHEET 1 OF 3
1725D01

See Plate for Title



STATE OF NORTH CAROLINA
DEPT. OF TRANSPORTATION
DIVISION OF HIGHWAYS
RALEIGH, N.C.

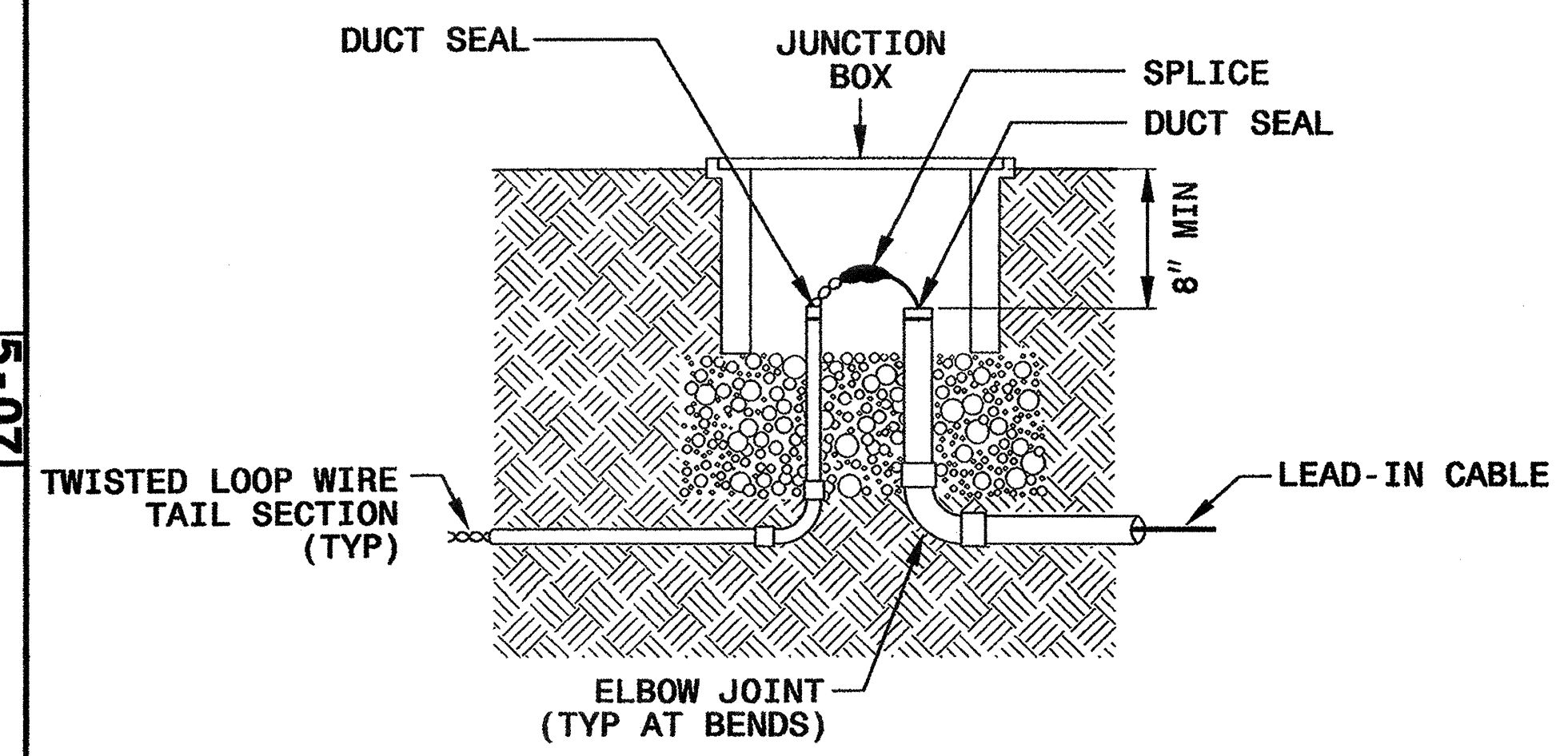
5-07

ENGLISH DETAIL DRAWING FOR
INDUCTIVE DETECTION LOOPS
LOOP WIRE DETAILS

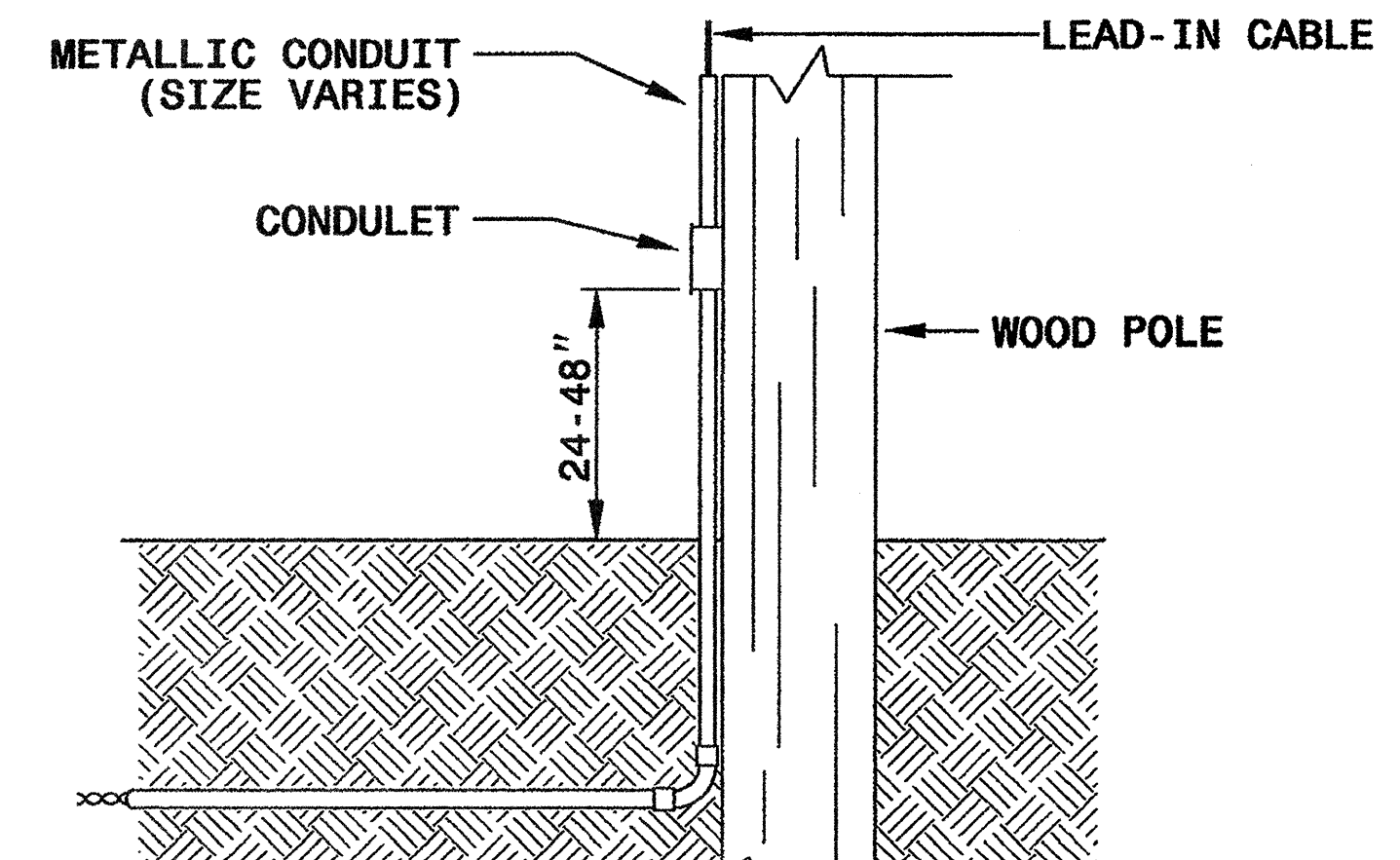
SHEET 2 OF 3
1725D01

LOOP WIRE SPLICE POINT DETAILS

LOOP WIRE AT JUNCTION BOX



LOOP WIRE AT POLE

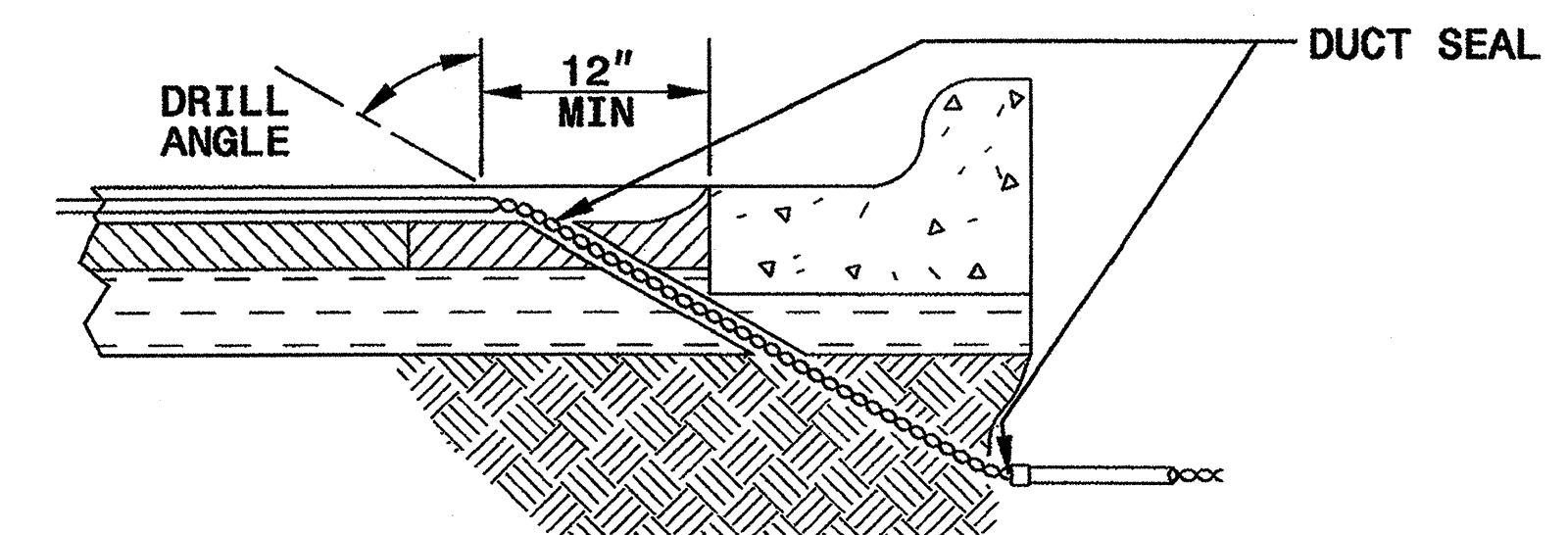


NOTE

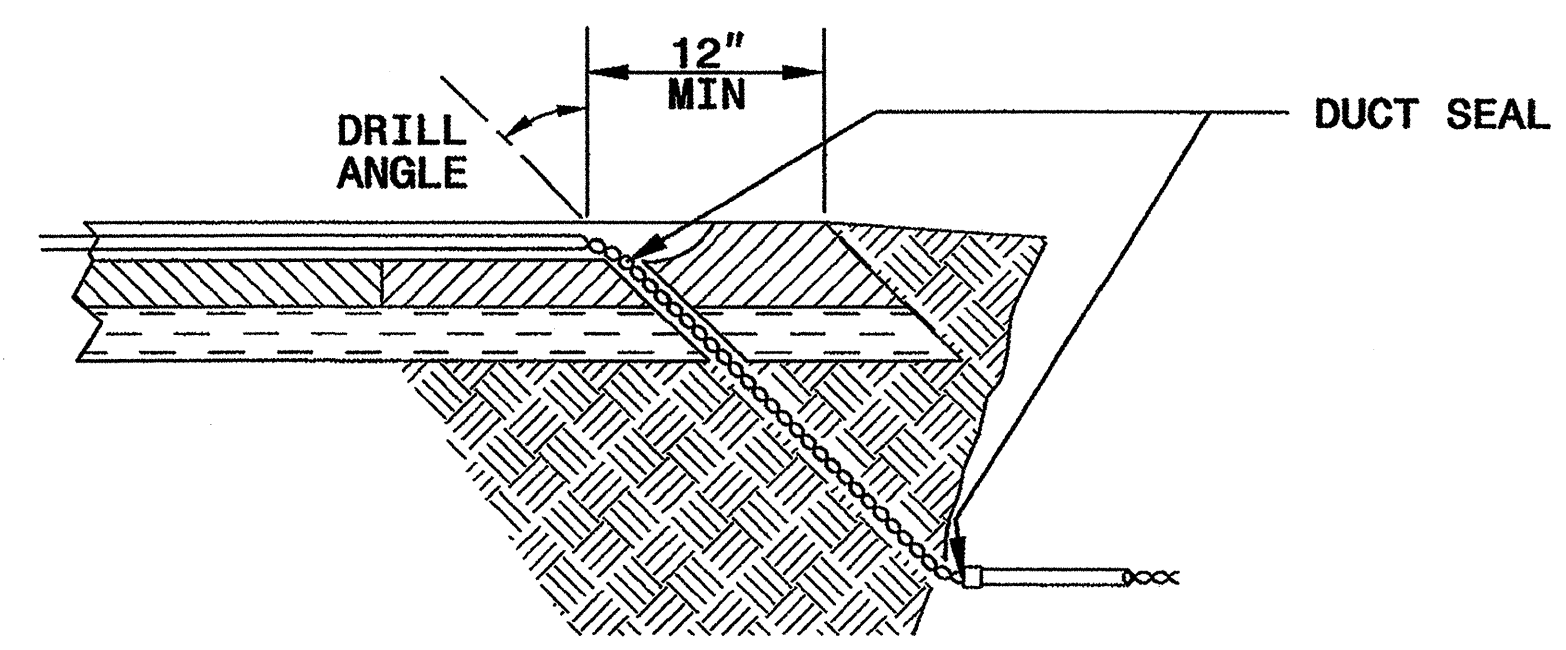
SPLICE ALL LOOP WIRE TAIL SECTIONS/LEAD-IN CABLE IN JUNCTION BOXES OR APPROVED CONDULETS.

LOOP WIRE PAVEMENT EDGE DETAILS

LOOP WIRE AT CURB & GUTTER SECTION



LOOP WIRE AT PAVEMENT SECTION



NOTES

- DO NOT EXCAVATE UNDER CURB AND GUTTER SECTIONS FOR CONDUIT INSTALLATION.
- TWIST LOOP WIRE TAIL SECTIONS FROM WHERE LOOP WIRE TAIL LEAVES SAW CUT TO JUNCTION BOX, INCLUDING THROUGH CONDUIT.
- BEFORE SEALING LOOPS, INSTALL DUCT SEAL WHERE LOOP WIRE TAIL SECTION LEAVES SAW CUT IN PAVEMENT AND AT ENTRANCE OF CONDUIT TO JUNCTION BOX.

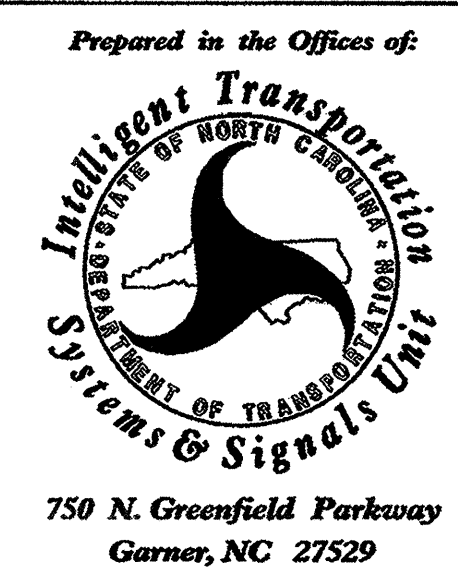
STATE OF NORTH CAROLINA
DEPT. OF TRANSPORTATION
DIVISION OF HIGHWAYS
RALEIGH, N.C.

5-07

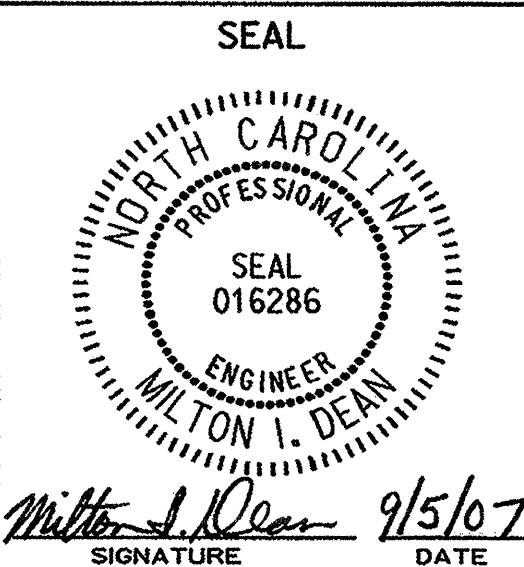
ENGLISH DETAIL DRAWING FOR
INDUCTIVE DETECTION LOOPS
LOOP WIRE DETAILS

SHEET 2 OF 3
1725D01

See Plate for Title



750 N. Greenfield Parkway
Garner, NC 27529



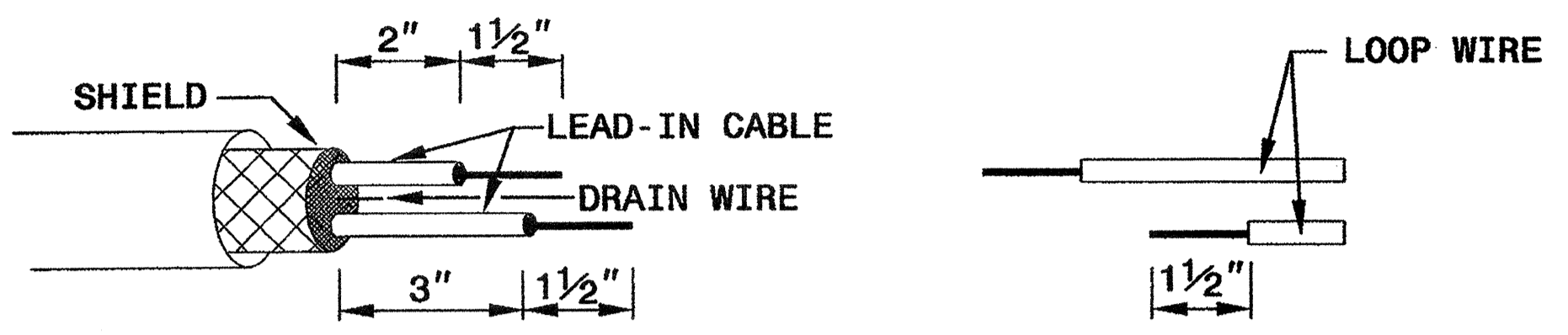
STATE OF NORTH CAROLINA
DEPT. OF TRANSPORTATION
DIVISION OF HIGHWAYS
RALEIGH, N.C.

5-07

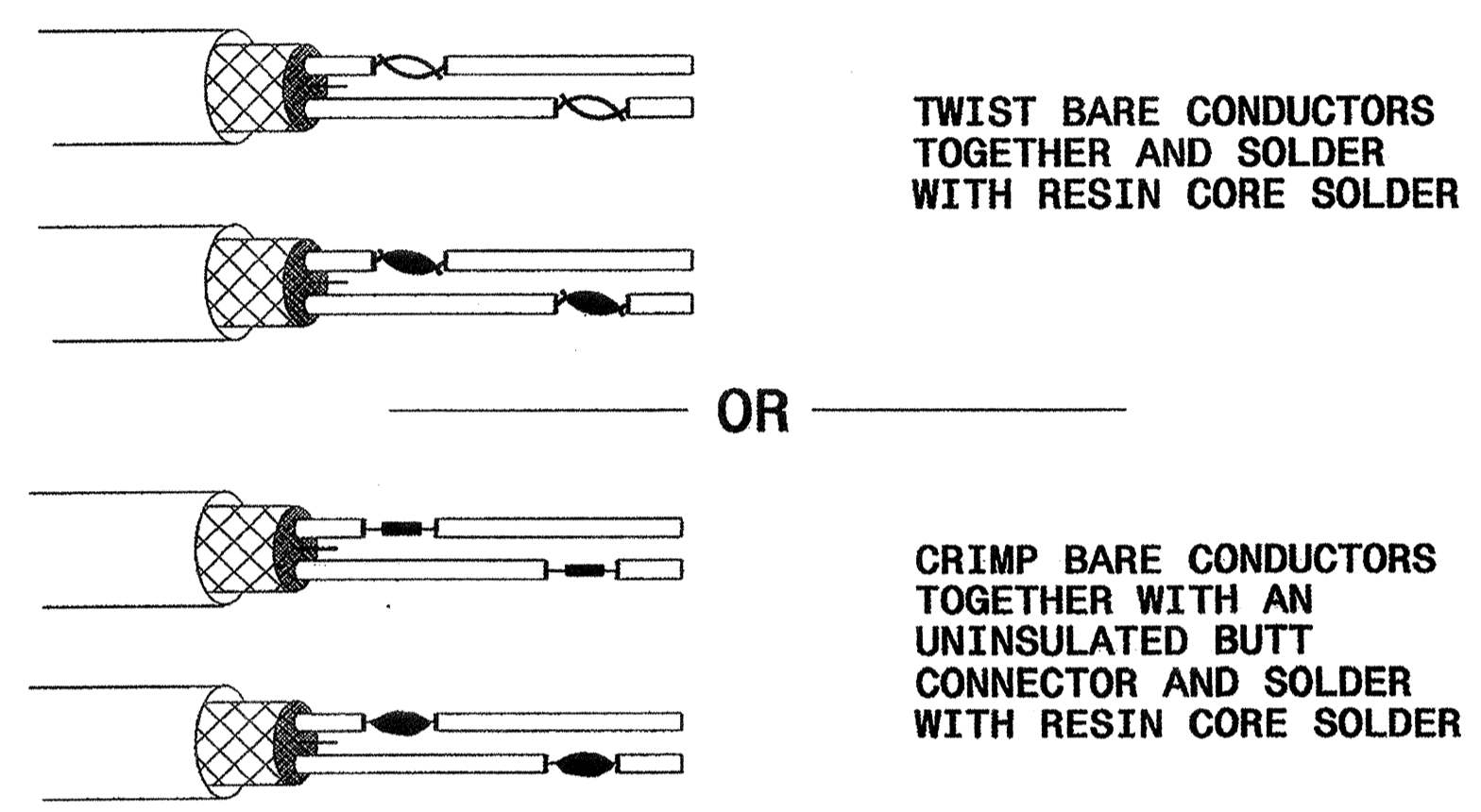
ENGLISH DETAIL DRAWING FOR
INDUCTION DETECTION LOOPS
SPlicing FOR LEAD-IN CABLE AND LOOP WIRE

SHEET 3 OF 3
1725D01

STEP 1. STRIP LOOP WIRE AND LEAD-IN CABLE

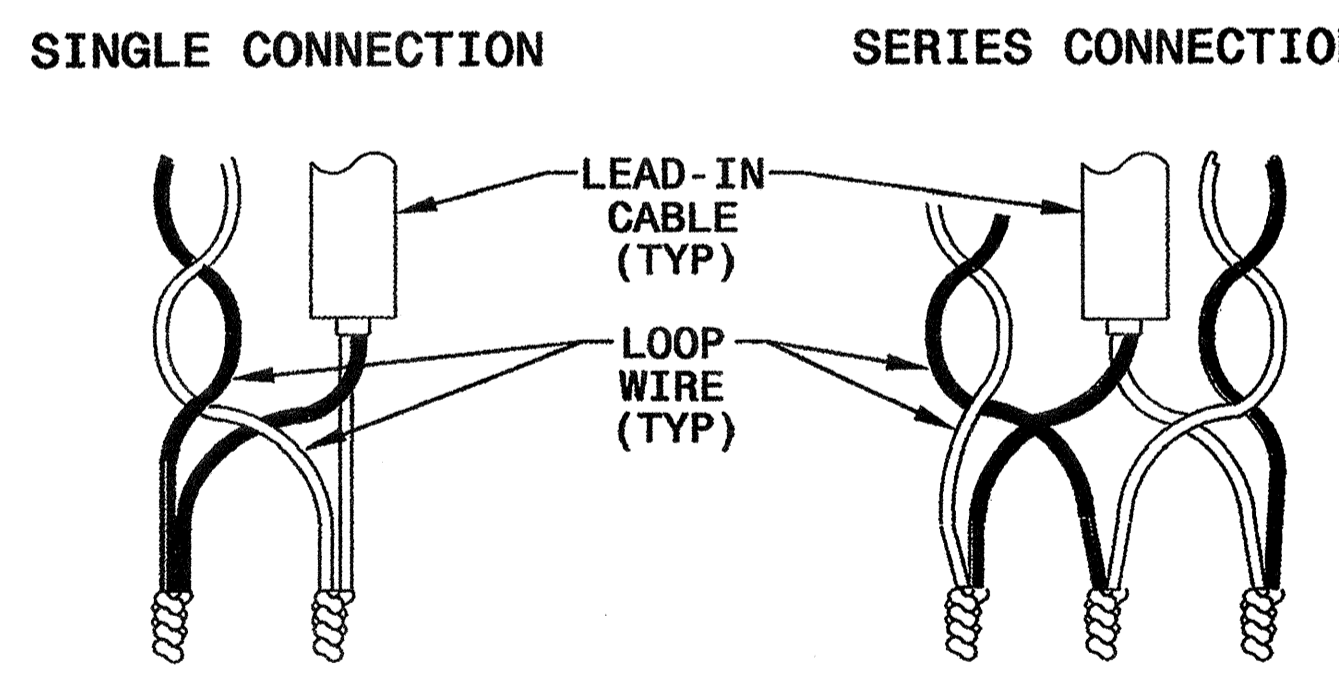


STEP 2. CONNECT AND SOLDER

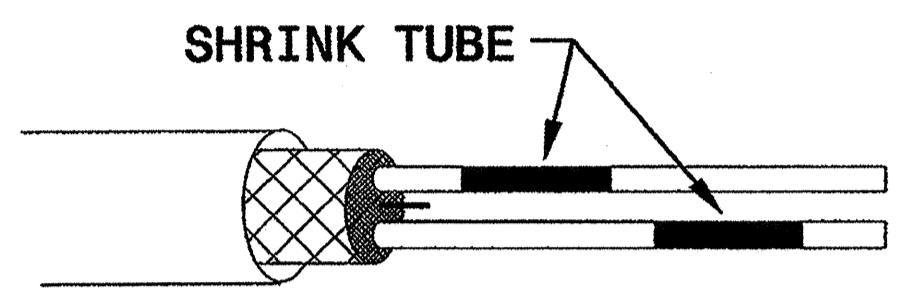


BOND SHIELD DRAIN WIRE AT SPLICE SECTIONS (DO NOT GROUND)

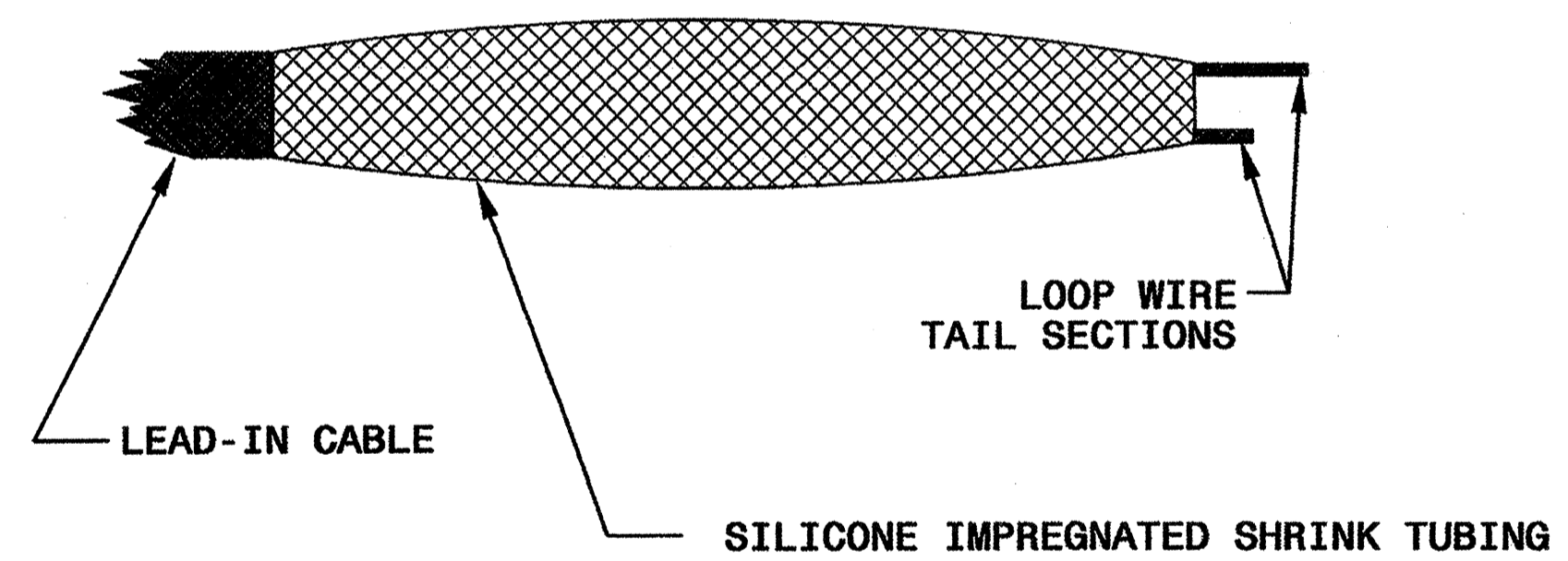
LOOP WIRE AND LEAD-IN CABLE CONNECTION DETAILS



STEP 3. INSULATE EACH SOLDER JOINT SEPARATELY



STEP 4. ENVIRONMENTALLY PROTECT SPLICE



STATE OF NORTH CAROLINA
DEPT. OF TRANSPORTATION
DIVISION OF HIGHWAYS
RALEIGH, N.C.

5-07

ENGLISH DETAIL DRAWING FOR
INDUCTIVE DETECTION LOOPS
SPlicing FOR LEAD-IN CABLE AND LOOP WIRE

SHEET 3 OF 3
1725D01

See Plate for Title

Prepared in the Offices of:

750 N. Greenfield Parkway
Garner, NC 27529

SEAL

SEAL
016286
ENGINEER
MILTON I. DEAN

Milton I. Dean 9/5/07
SIGNATURE DATE

05-SEP-2007 14:01
C:\p1\work\1725D01\1725D01.dwg
Z:\1116