

STATE OF NORTH CAROLINA  
DIVISION OF HIGHWAYS

STATE PROJECT REFERENCE NO.	SHEET NO.
B-4649	TCP-1

**PLAN FOR PROPOSED  
TRAFFIC CONTROL, MARKING & DELINEATION  
UNION COUNTY**

B-4649

**ROADWAY STANDARD DRAWINGS**

THE FOLLOWING ROADWAY STANDARDS AS APPEAR IN "ROADWAY STANDARD DRAWINGS"- PROJECT SERVICES UNIT-N.C. DEPARTMENT OF TRANSPORTATION-RALEIGH, N.C., DATED JULY 2006 ARE APPLICABLE TO THIS PROJECT AND BY REFERENCE HEREBY ARE CONSIDERED A PART OF THESE PLANS:

STD. NO.	TITLE
1101.03	TEMPORARY ROAD CLOSURES
1101.05	WORK ZONE VEHICLE ACCESSSES
1101.11	TRAFFIC CONTROL DESIGN TABLES
1110.01	STATIONARY WORK ZONE SIGNS
1145.01	BARRICADES
1150.01	FLAGGING DEVICES
1205.01	PAVEMENT MARKINGS - LINE TYPES & OFFSETS
1205.02	PAVEMENT MARKINGS - 2 LANE & MULTILANE ROADWAYS
1205.12	PAVEMENT MARKINGS - BRIDGES
1250.01	PAVEMENT MARKER SPACING
1251.01	RAISED PAVEMENT MARKERS (TEMPORARY & PERMANENT)
1253.01	SNOWPLOWABLE RAISED PAVEMENT MARKERS
1261.01	GUARDRAIL & BARRIER DELINEATOR SPACING
1261.02	GUARDRAIL & BARRIER DELINEATOR TYPES
1262.01	GUARDRAIL END DELINEATION

**INDEX OF SHEETS**


SHEET NO.	TITLE
TCP-1	LIST OF APPLICABLE ROADWAY STANDARD DRAWINGS, LEGEND, AND INDEX OF SHEETS
TCP-2	GENERAL NOTES, PHASING, FINAL PAVEMENT MARKING SCHEDULE
TCP-3	DETOUR MAP AND SIGNING
SD-1	SPECIAL SIGN DESIGN

**LEGEND**

- GENERAL**
- DIRECTION OF TRAFFIC FLOW
  - NORTH ARROW
  - PROPOSED PVMT. EXIST. PVMT.
  - WORK AREA
  - REMOVAL OF EXISTING PAVEMENT
- TRAFFIC CONTROL DEVICES**
- TYPE I BARRICADE
  - TYPE II BARRICADE
  - TYPE III BARRICADE
  - CONE
  - DRUM SKINNY DRUM
  - FLASHING ARROW PANEL (TYPE C)
  - STATIONARY SIGN
  - PORTABLE SIGN
  - STATIONARY OR PORTABLE SIGN
  - WARNING FLAGS
  - CRASH CUSHION
  - CHANGEABLE MESSAGE SIGN
  - TRUCK MOUNTED IMPACT ATTENUATOR (TMIA)
  - POLICE
  - FLAGGER
- PAVEMENT MARKINGS**
- CRYSTAL/CRYSTAL PAVEMENT MARKER
  - YELLOW/YELLOW PAVEMENT MARKER
  - CRYSTAL/RED PAVEMENT MARKER
  - PAVEMENT MARKING SYMBOLS

03-JUN-2008 09:57  
\\dot\dfsroot\01\proj\01\trproj\objects-b\4649\traffic\trafficcontrol\top\B-4649\_TC-TCP-1.dgn  
halawandos AT WZT224250

**TIP PROJECT:**

APPROVED: _____ DATE: _____	PLAN PREPARED BY: N.C.D.O.T. WORK ZONE TRAFFIC CONTROL UNIT
 June 3, 2008	J.S. Bourne, PE _____ TRAFFIC CONTROL ENGINEER
	Joseph Ishak, PE _____ TRAFFIC CONTROL PROJECT ENGINEER
	Habib A. Lawandos _____ TRAFFIC CONTROL PROJECT DESIGN ENGINEER
	_____ TRAFFIC CONTROL DESIGN ENGINEER

# PROJECT NOTES

# PHASING

## GENERAL NOTES

CHANGES MAY BE REQUIRED WHEN PHYSICAL DIMENSIONS IN THE DETAIL DRAWINGS, STANDARD DETAILS AND ROADWAY DETAILS ARE NOT ATTAINABLE TO MEET FIELD CONDITIONS, OR RESULT IN DUPLICATE, OR UNDESIRABLE OVERLAPPING OF DEVICES. MODIFICATION MAY INCLUDE: MOVING, SUPPLEMENTING, COVERING OR REMOVAL OF DEVICES, AS DIRECTED BY THE ENGINEER.

THE FOLLOWING GENERAL NOTES APPLY AT ALL TIMES FOR THE DURATION OF THE CONSTRUCTION PROJECT, EXCEPT WHEN OTHERWISE NOTED IN THE PLAN, OR DIRECTED BY THE ENGINEER.

### TRAFFIC PATTERN ALTERATIONS

- A) NOTIFY THE ENGINEER TWENTY ONE (21) CALENDAR DAYS PRIOR TO ANY TRAFFIC PATTERN ALTERATION.

### SIGNING

- B) STATE FORCES WILL INSTALL PERMANENT SIGNING.  
 C) INSTALL DETOUR SIGNING WITHIN/OUTSIDE THE PROJECT LIMITS.  
 D) COVER OR REMOVE ALL DETOUR SIGNS WITHIN/OUTSIDE THE PROJECT LIMITS WHEN A DETOUR IS NOT IN OPERATION.  
 E) ENSURE ALL NECESSARY SIGNING IS IN PLACE PRIOR TO ALTERING ANY TRAFFIC PATTERN.

### TRAFFIC CONTROL DEVICES

- F) PLACE TYPE III BARRICADES, WITH "ROAD CLOSED" SIGN R11-2 ATTACHED OF SUFFICIENT LENGTH TO CLOSE ENTIRE ROADWAY. STAGGER OR OVERLAP BARRICADES TO ALLOW FOR INGRESS OR EGRESS.

### PAVEMENT MARKINGS AND MARKERS

- G) INSTALL PAVEMENT MARKINGS AND PAVEMENT MARKERS ON THE FINAL SURFACE AS FOLLOWS:

ROAD NAME	MARKING	MARKER
SR 1103	PAINT	N/A

- H) PLACE ONE APPLICATION OF PAINT FOR TEMPORARY TRAFFIC PATTERNS. PLACE A SECOND APPLICATION OF PAINT SIX (6) MONTHS AFTER THE INITIAL APPLICATION AND EVERY SIX MONTHS AS DIRECTED BY THE ENGINEER.  
 I) TIE PROPOSED PAVEMENT MARKING LINES TO EXISTING PAVEMENT MARKING LINES.  
 J) REMOVE/REPLACE ANY CONFLICTING/DAMAGED PAVEMENT MARKINGS AND MARKERS BY THE END OF EACH DAY'S OPERATION.

## LOCAL NOTE

NOTIFY JOHNNY MCKAY (E-MAIL: MCKAYJD@SCDOT.ORG) WITH SOUTH CAROLINA DEPARTMENT OF TRANSPORTATION ONE WEEK BEFORE INSTALLING DETOUR SIGNS AND PLACING BARRICADES ON OLD CHURCH RD. IN SOUTH CAROLINA.

WORKING IN A CONTINUOUS MANNER, COMPLETE THE FOLLOWING:

STEP 1: USING RSD 1101.03 AS DIRECTED BY THE ENGINEER, INSTALL DETOUR SIGNING AND BARRICADES TO CLOSE SR 1103 TO THRU TRAFFIC AND SHIFT TRAFFIC ONTO OFFSITE DETOUR. (SEE TCP-3)

STEP 2: AWAY FROM TRAFFIC, PERFORM THE FOLLOWING:

-CONSTRUCT SR 1103 (-L-) FROM -L- STA. 22+50.00 TO -L- STA 31+00.00 INCLUDING PROPOSED STRUCTURE, UP TO AND INCLUDING THE FINAL LAYER OF SURFACE COURSE.

-PLACE FINAL PAVEMENT MARKING (PAINT) ON SR 1103 (-L-).

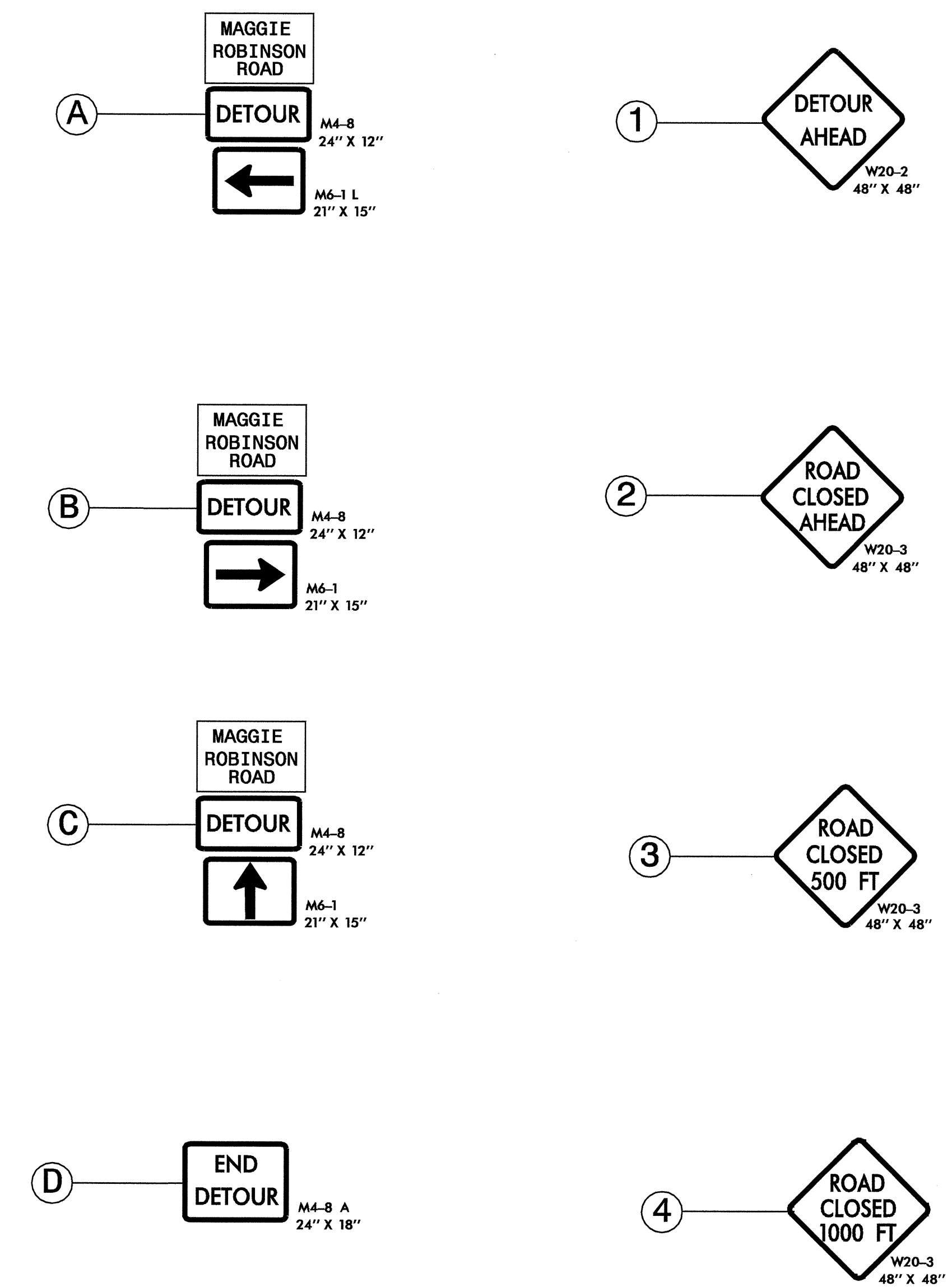
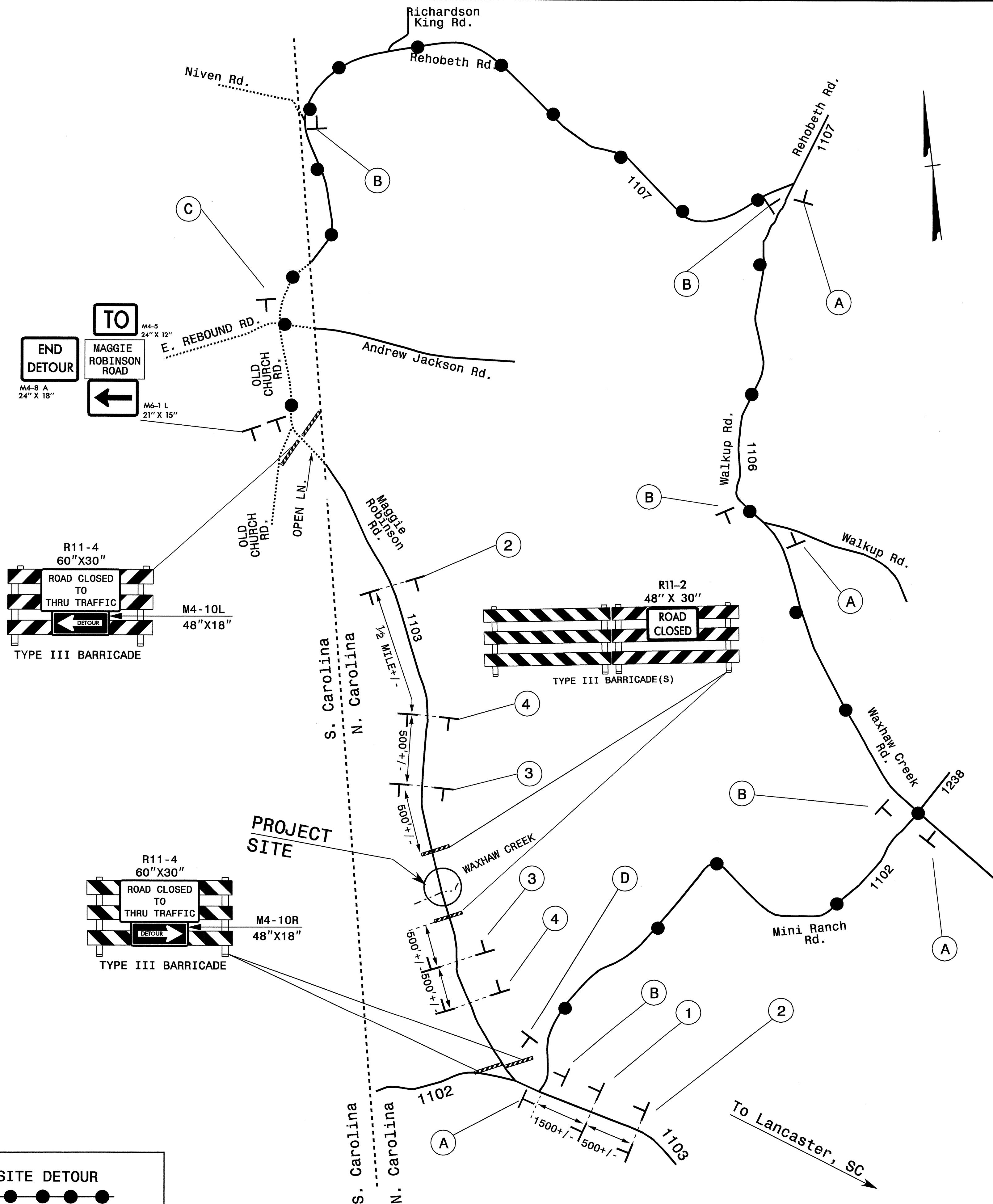
-REMOVE ALL TRAFFIC CONTROL DEVICES AND OPEN SR 1103 TO THE PROPOSED TRAFFIC PATTERN.

## FINAL PAVEMENT MARKING SCHEDULE

SYMBOL	DESCRIPTION	PAY ITEM QUANTITY	
		BREAKDOWN	TOTAL QUANTITY
FINAL PAVEMENT MARKINGS			
PAINT(4")			
PA	WHITE EDGE LINE(2X)	3500 LF	
PI	YELLOW DOUBLE CENTER (2X)	3500 LF	
			TOTAL 7000 LF
NOTE: FOR EACH PAINT PAVEMENT MARKING ITEM, 1X IMPLIES A SINGLE APPLICATION, 2X IMPLIES TWO APPLICATIONS, AND 3X IMPLIES THREE APPLICATIONS.			

21-JUL-2008 13:41 \\dot\dfsroot\proj\ppr\projects-b\4649\traffic\trafficcontrol\top\B-4649\_fc\_top-2.dgn hdawandos AT WZTC244737

APPROVED: _____ DATE: _____	<b>GENERAL NOTES, PHASING AND FINAL PAVEMENT MARKING SCHEDULE</b>	
	SCALE: NONE	
	DATE: MAY 08	
	DESIGN BY: HAL	
	REVIEWED BY: JI	
		REVISIONS
		CADD FILE



NOTIFY JOHNNY MCKAY (E-MAIL: MCKAYJD@SCDOT.ORG) WITH SOUTH CAROLINA DEPARTMENT OF TRANSPORTATION ONE WEEK BEFORE INSTALLING DETOUR SIGNS AND PLACING BARRICADES ON OLD CHURCH RD. IN SOUTH CAROLINA.

APPROVED: _____ DATE: _____	<b>DETOUR MAP AND SIGNING</b>									
SCALE: NONE	DATE: June 08	<table border="1"> <thead> <tr> <th colspan="2">REVISIONS</th> </tr> <tr> <th>NO.</th> <th>DESCRIPTION</th> </tr> </thead> <tbody> <tr> <td> </td> <td> </td> </tr> <tr> <td> </td> <td> </td> </tr> </tbody> </table>	REVISIONS		NO.	DESCRIPTION				
REVISIONS										
NO.	DESCRIPTION									
DWG. BY: HAL	DESIGN BY: HAL									
REVIEWED BY: JI	DATE: July 22, 2008									

21-JUL-2008 09:56 \\dot\dfsroot\01\proj\top\projects-b\4649\traffic\trafficcontrol\top\b-4649\_top-3.dgn