

CONTRACT: C201930 TIP PROJECT: B-4649

STATE OF NORTH CAROLINA  
DIVISION OF HIGHWAYS

**UNION COUNTY**

PLAN FOR PROPOSED  
HIGHWAY EROSION CONTROL

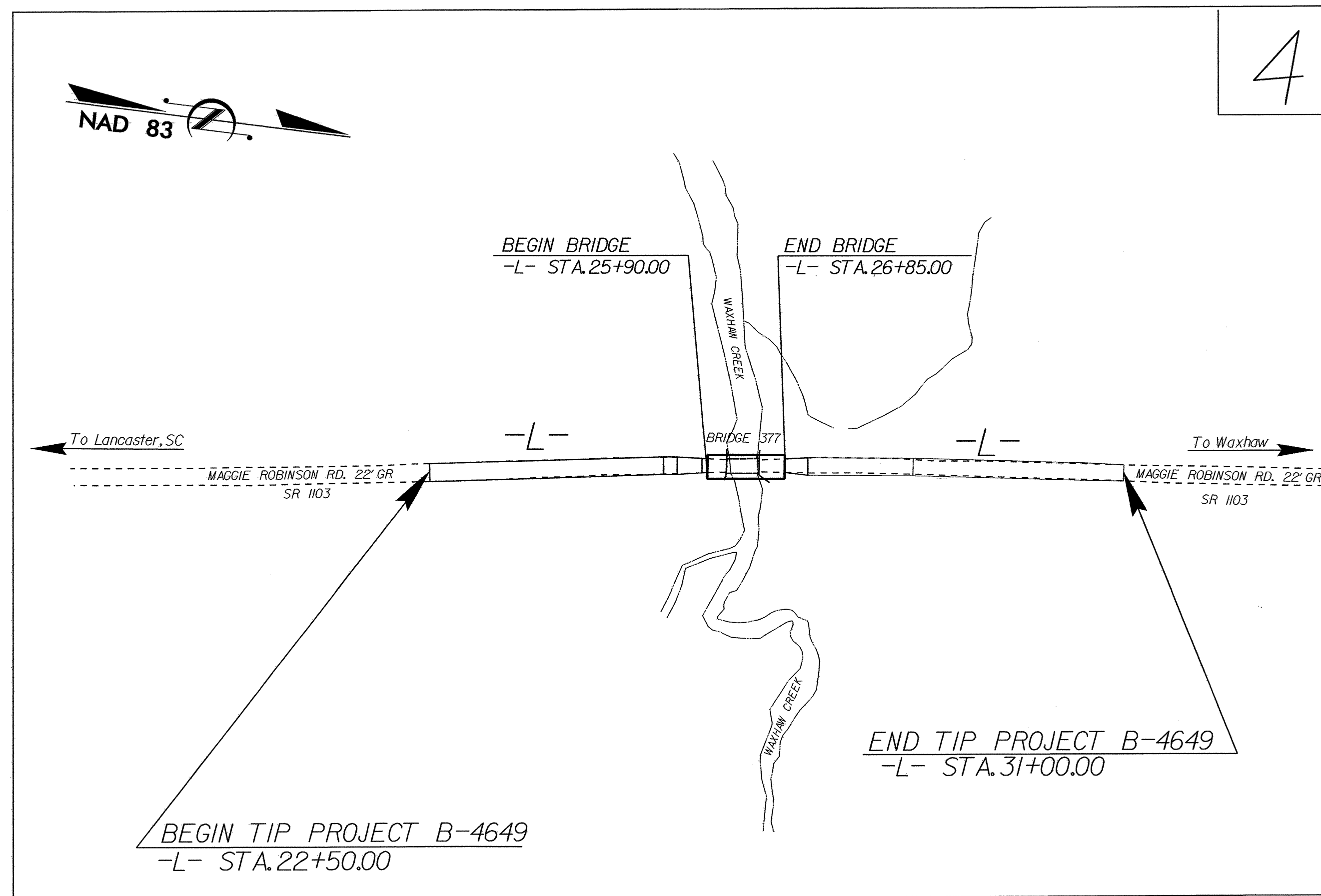
LOCATION: BRIDGE NO. 377 ON SR 1103  
(MAGGIE ROBINSON ROAD)  
OVER WAXHAW CREEK

TYPE OF WORK: GRADING, PAVING, DRAINAGE, AND  
STRUCTURE

STATE	STATE PROJECT REFERENCE NO.	SHEET NO.	TOTAL SHEETS
N.C.	B-4649	EC-1	
STATE PROJ. NO.	F.A. PROJ. NO.	DESCRIPTION	

EROSION AND SEDIMENT CONTROL MEASURES

Std. #	Description	Symbol
1630.03	Temporary Silt Ditch	TD
1630.05	Temporary Diversion	TD
1605.01	Temporary Silt Fence	III III III
1606.01	Special Sediment Control Fence	III III III
1622.01	Temporary Berms and Slope Drains	TD
1630.01	Riser Basin	TD
	Silt Basin Type B	TD
1633.01	Temporary Rock Silt Check Type-A	TD
	Temporary Rock Silt Check Type-B	TD
	Wattle	TD
1634.01	Temporary Rock Sediment Dam Type-A	TD
1634.02	Temporary Rock Sediment Dam Type-B	TD
1635.01	Rock Pipe Inlet Sediment Trap Type-A	TD
1635.02	Rock Pipe Inlet Sediment Trap Type-B	TD
1630.04	Stilling Basin	TD
1630.06	Special Stilling Basin	TD
	Rock Inlet Sediment Trap:	
1632.01	Type A	A
1632.02	Type B	B
1632.03	Type C	C
	Skimmer Basin	TD
	Tiered Skimmer Basin	TD
	Infiltration Basin	TD

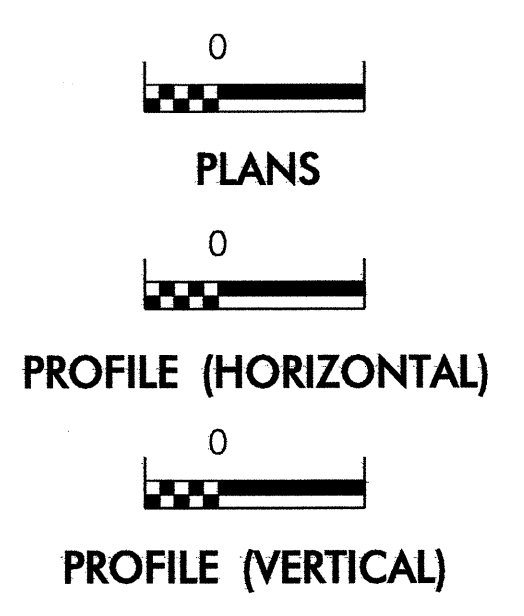


THIS PROJECT CONTAINS  
EROSION CONTROL PLANS  
FOR CLEARING AND  
GRUBBING PHASE OF  
CONSTRUCTION.

THIS PROJECT HAS  
BEEN DESIGNED TO  
SENSITIVE WATERSHED  
STANDARDS.

ENVIRONMENTALLY  
SENSITIVE AREA(S) EXIST  
ON THIS PROJECT  
*Refer To E. C. Special Provisions  
for Special Considerations.*

GRAPHIC SCALE



ROADSIDE ENVIRONMENTAL UNIT  
DIVISION OF HIGHWAYS  
STATE OF NORTH CAROLINA

Prepared In the Office of:  
**ROADSIDE ENVIRONMENTAL UNIT**  
1 South Wilmington St.  
Raleigh, NC 27611  
**2006 STANDARD SPECIFICATIONS**

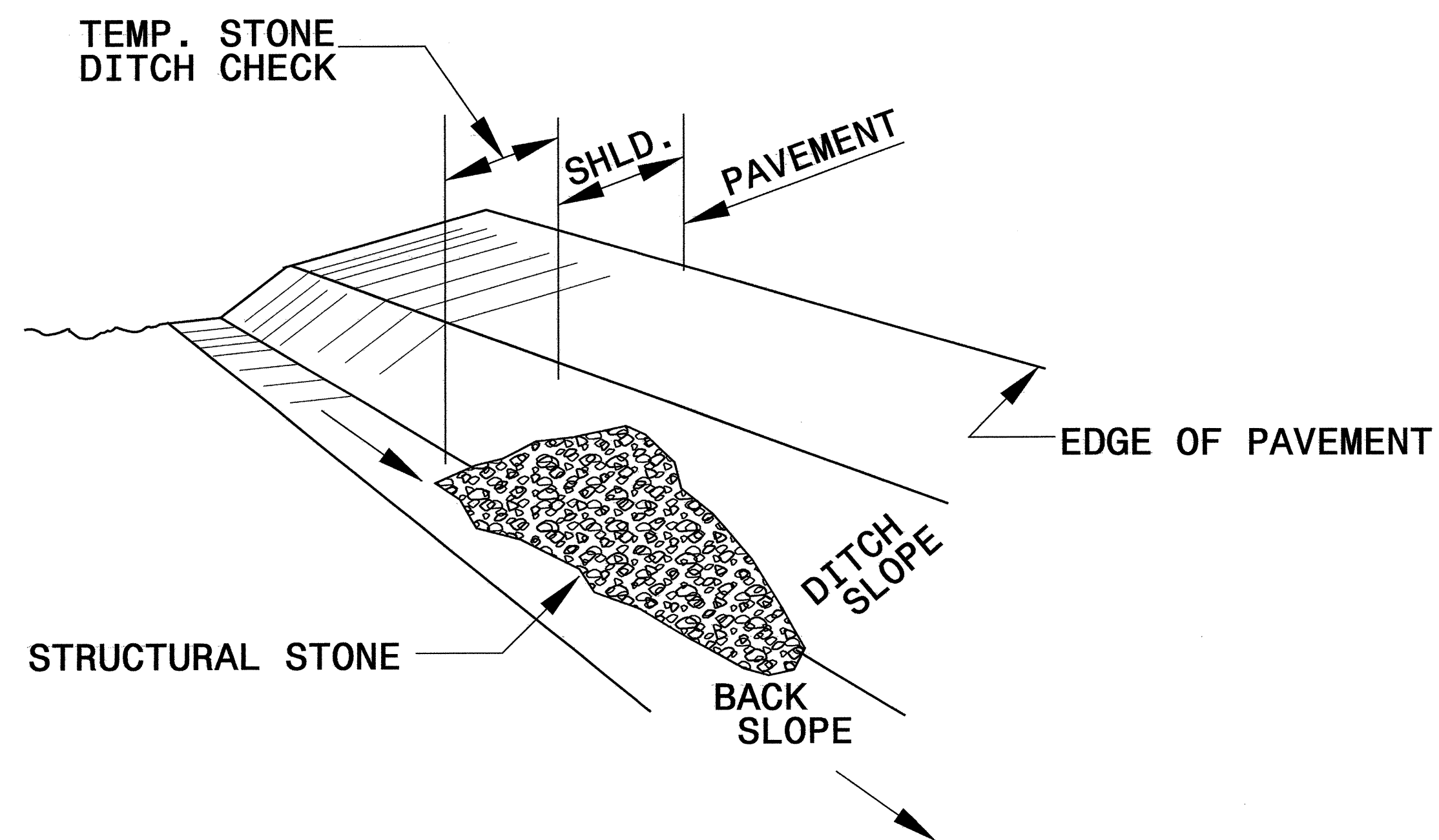
Roadway Standard Drawings  
The following roadway english standards as appear in "Roadway Standard Drawings"-- Roadway Design Unit - N. C. Department of Transportation - Raleigh, N. C., dated July 18, 2006 and the latest revision thereto are applicable to this project and by reference hereby are considered a part of these plans.

1605.01 Temporary Silt Fence	1632.03 Rock Inlet Sediment Trap Type C
1607.01 Gravel Construction Entrance	1633.01 Temporary Rock Silt Check Type A
1630.05 Temporary Diversion	

29-MAY-2008 16:50  
\\fncps\apps\environmental\design\B-4649\ee.tah.dgn

PROJECT REFERENCE NO. B-4649	SHEET NO. EC-2
RW SHEET NO.	
ROADWAY DESIGN ENGINEER	HYDRAULICS ENGINEER

# TEMPORARY ROCK SILT CHECK TYPE 'B' DETAIL

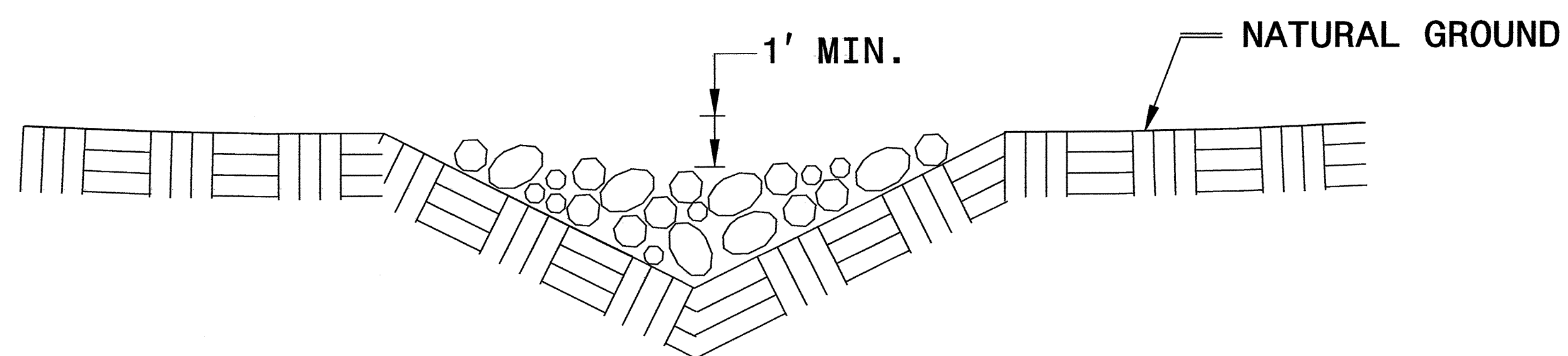


**ISOMETRIC VIEW**

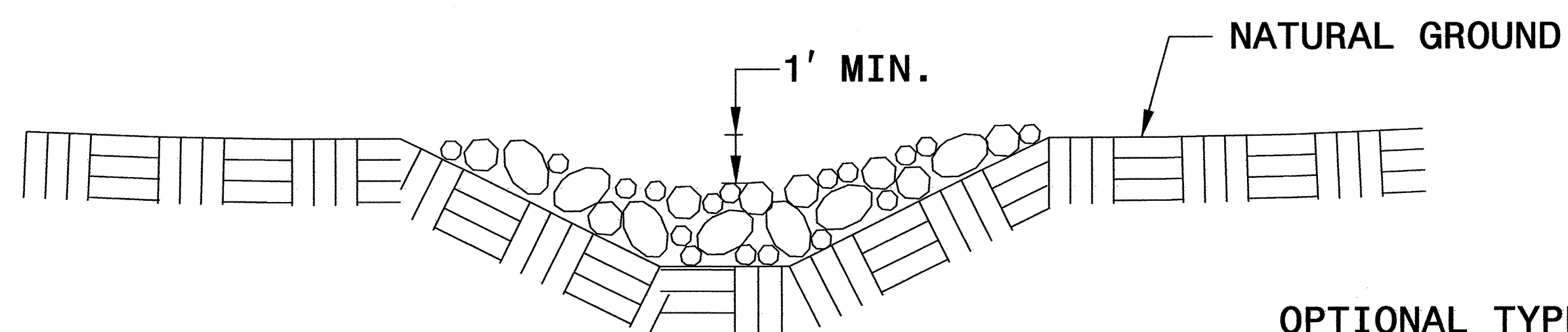
**NOTES:**

USE CLASS 'B' EROSION CONTROL STONE FOR STRUCTURAL STONE.

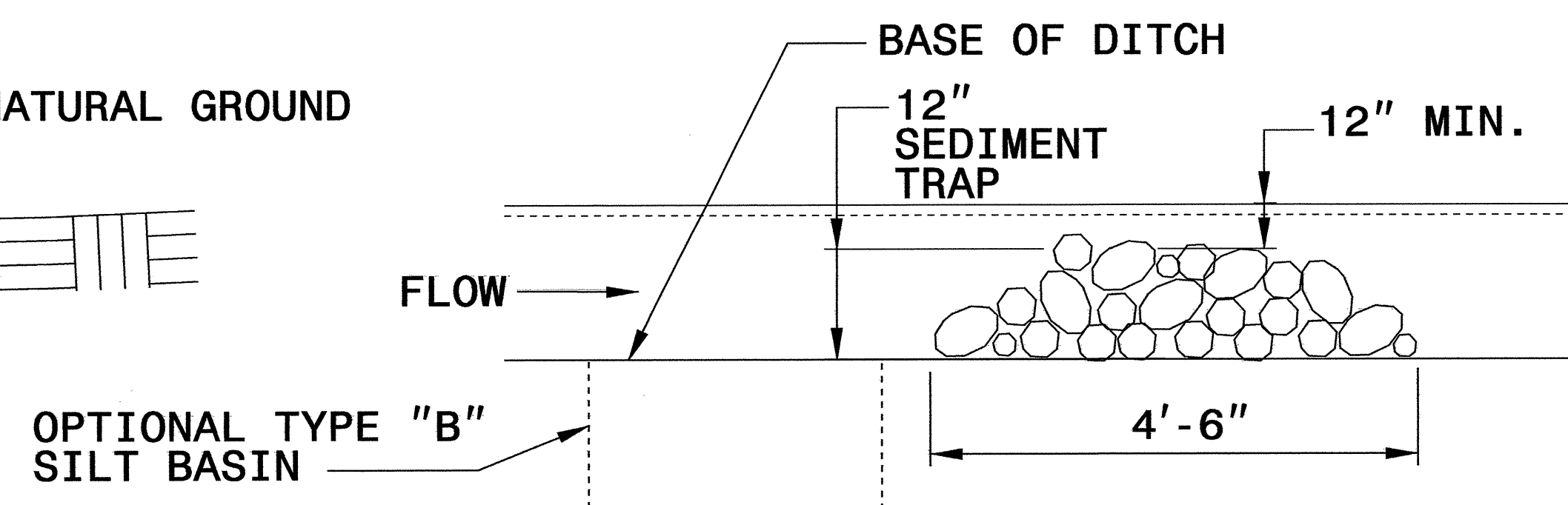
THE ENGINEER MAY DIRECT THE OPTION OF CLASS "A" STONE FOR SITES HAVING LESS THAN ONE (1) ACRE DRAINAGE AREA AND A DITCH GRADE LESS THAN 3%.



**CROSS SECTION  
VEE DITCH**



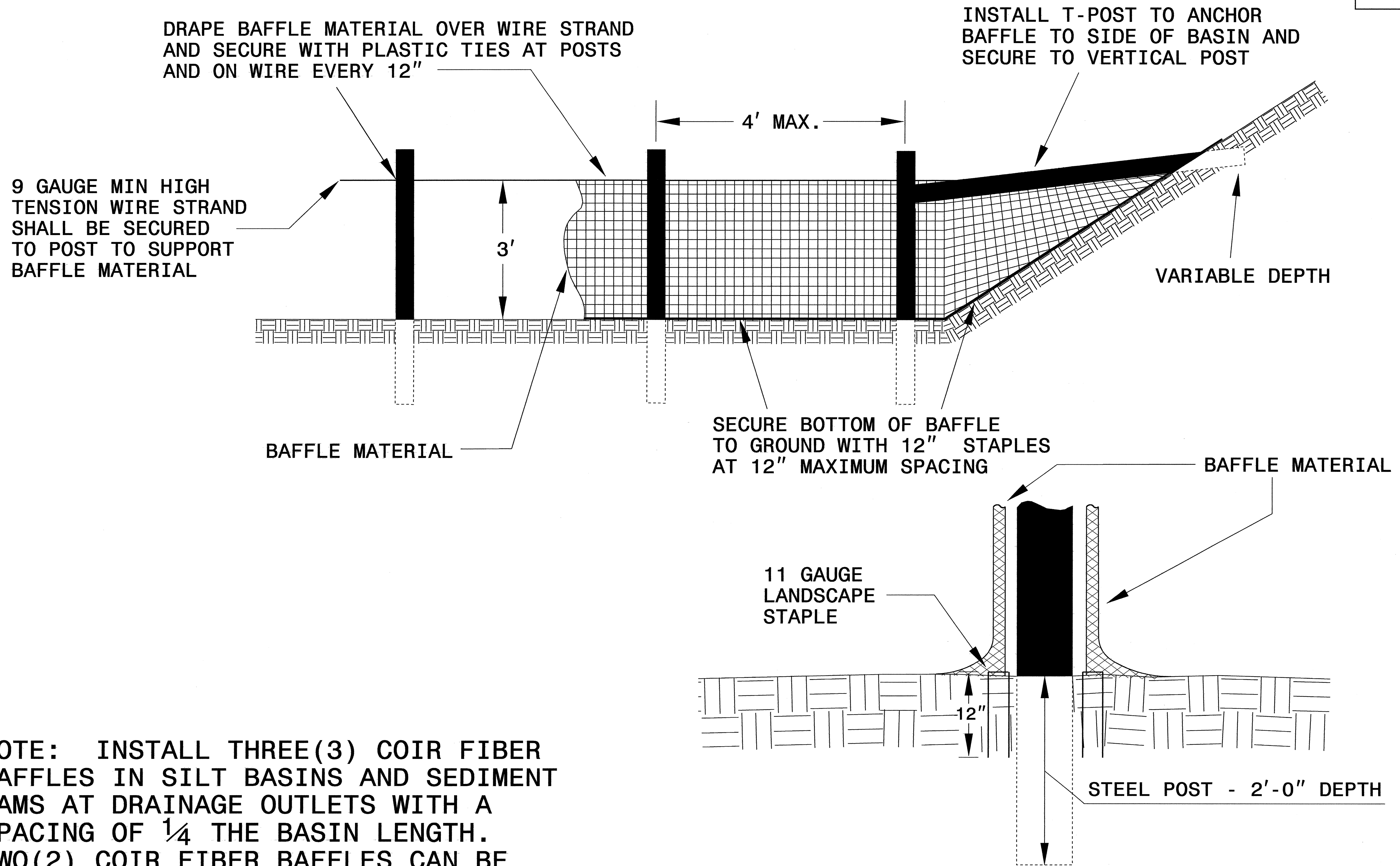
**CROSS SECTION  
TRAPEZOIDAL DITCH**



**ELEVATION VIEW**

PROJECT REFERENCE NO. B-4649	SHEET NO. EC-2A
RW SHEET NO.	
ROADWAY DESIGN ENGINEER	HYDRAULICS ENGINEER

# COIR FIBER BAFFLE DETAIL

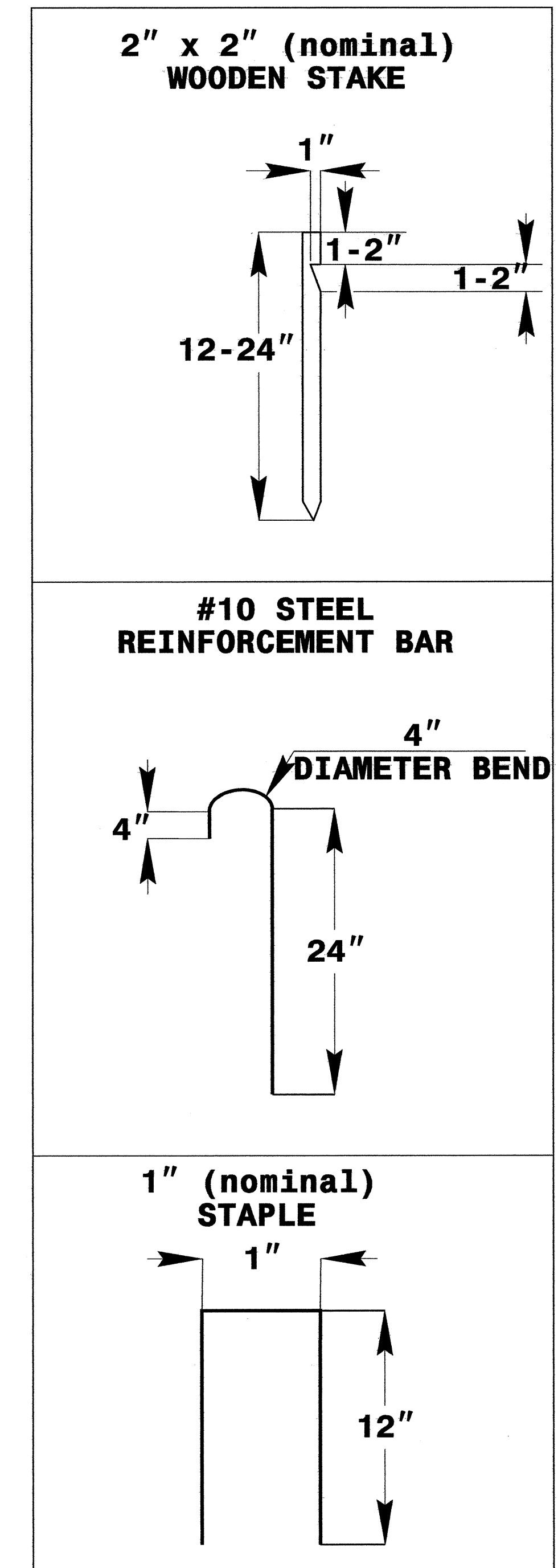
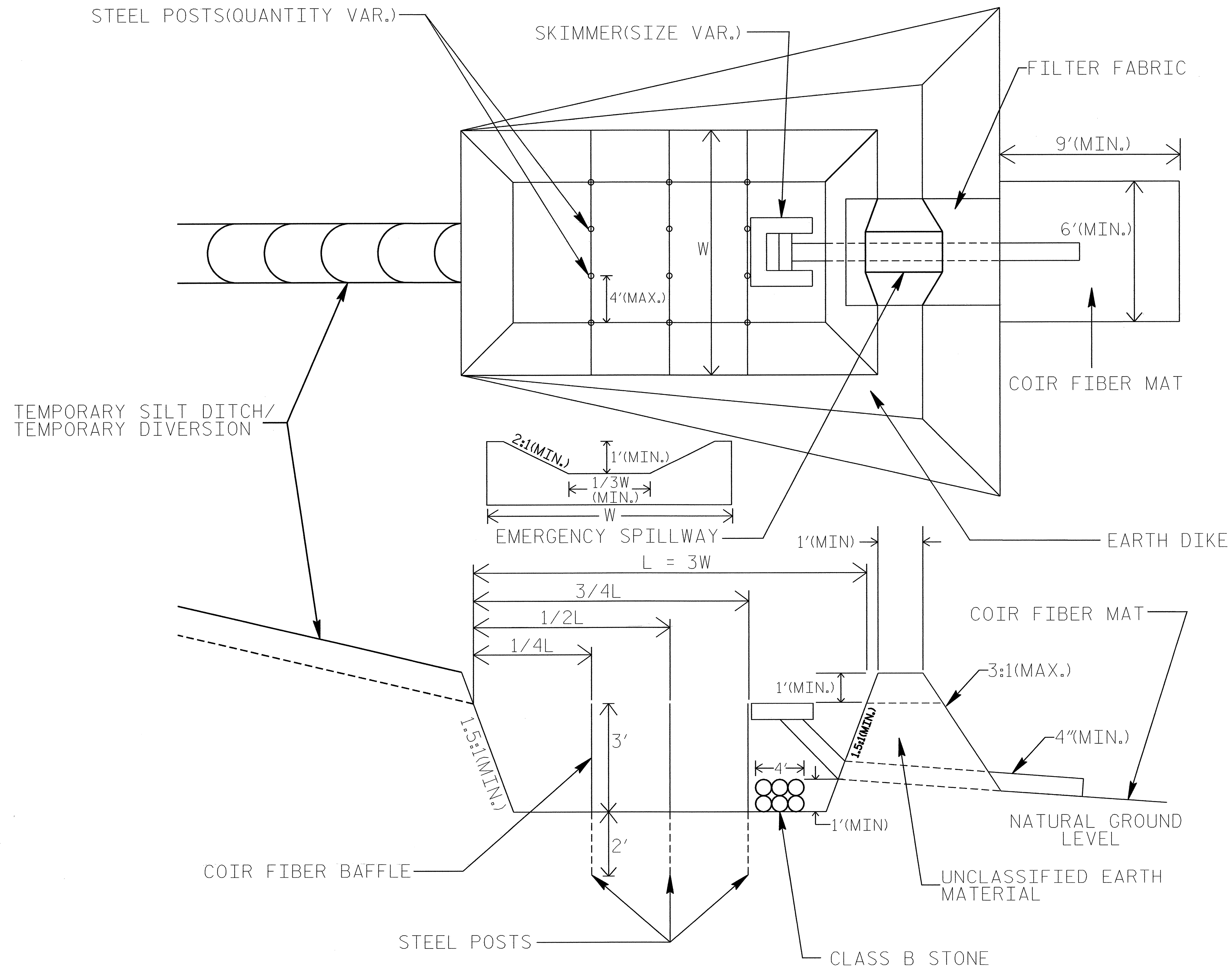


NOTE: INSTALL THREE(3) COIR FIBER BAFFLES IN SILT BASINS AND SEDIMENT DAMS AT DRAINAGE OUTLETS WITH A SPACING OF  $\frac{1}{4}$  THE BASIN LENGTH. TWO(2) COIR FIBER BAFFLES CAN BE INSTALLED IN SILT BASINS AND DAMS LESS THAN 20 FT. IN LENGTH WITH A SPACING OF  $\frac{1}{3}$  THE BASIN LENGTH.

BAFFLE MATERIAL SHALL BE SECURED TO THE BOTTOM AND SIDES OF BASIN USING 12" LANDSCAPE STAPLES

# SKIMMER BASIN WITH BAFFLES DETAIL

PROJECT REFERENCE NO. B-4649	SHEET NO. EC-2B
RW SHEET NO.	
ROADWAY DESIGN ENGINEER	HYDRAULICS ENGINEER

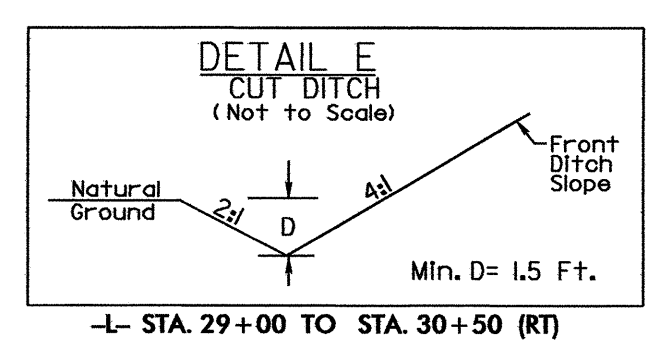
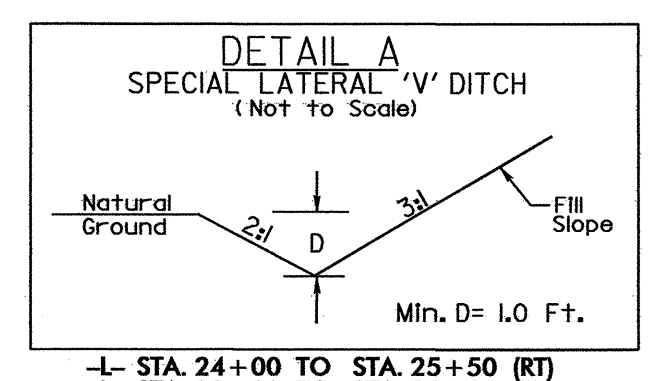
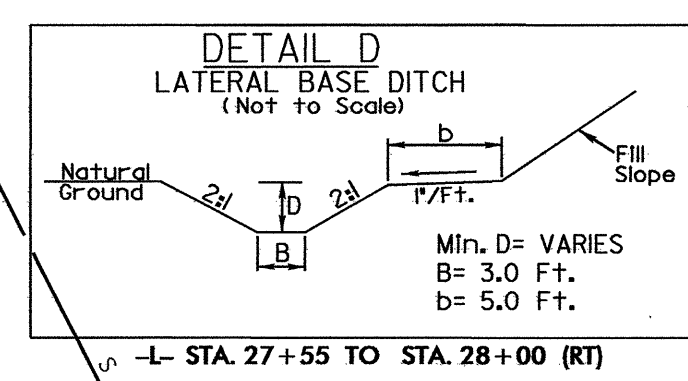
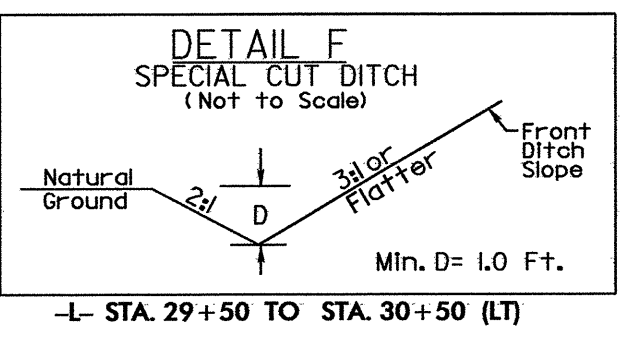


**COIR FIBER MAT ANCHOR OPTIONS**

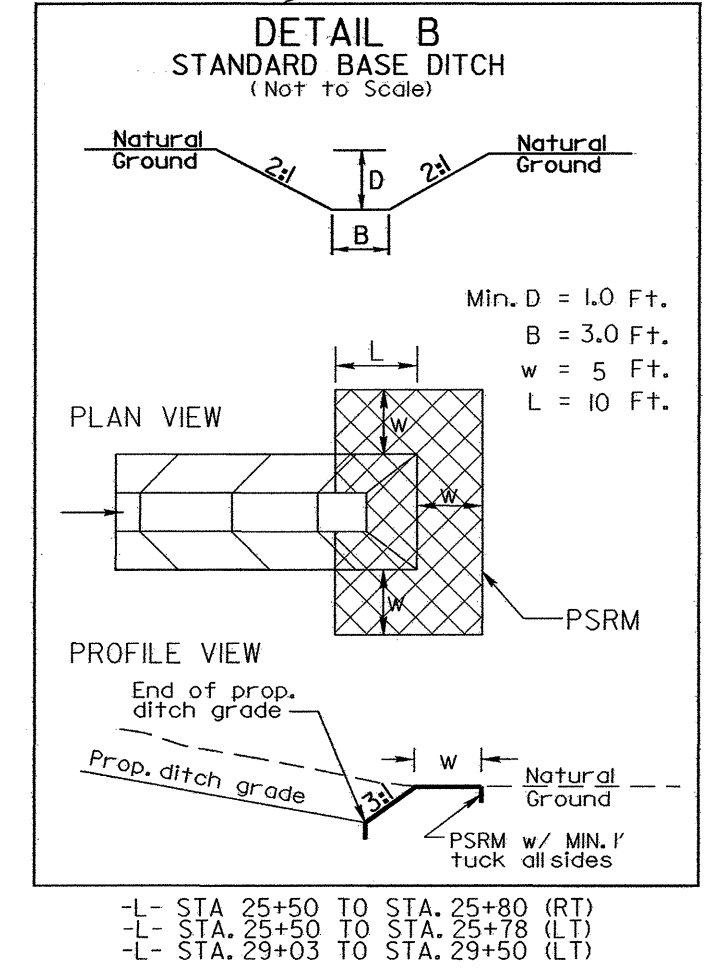
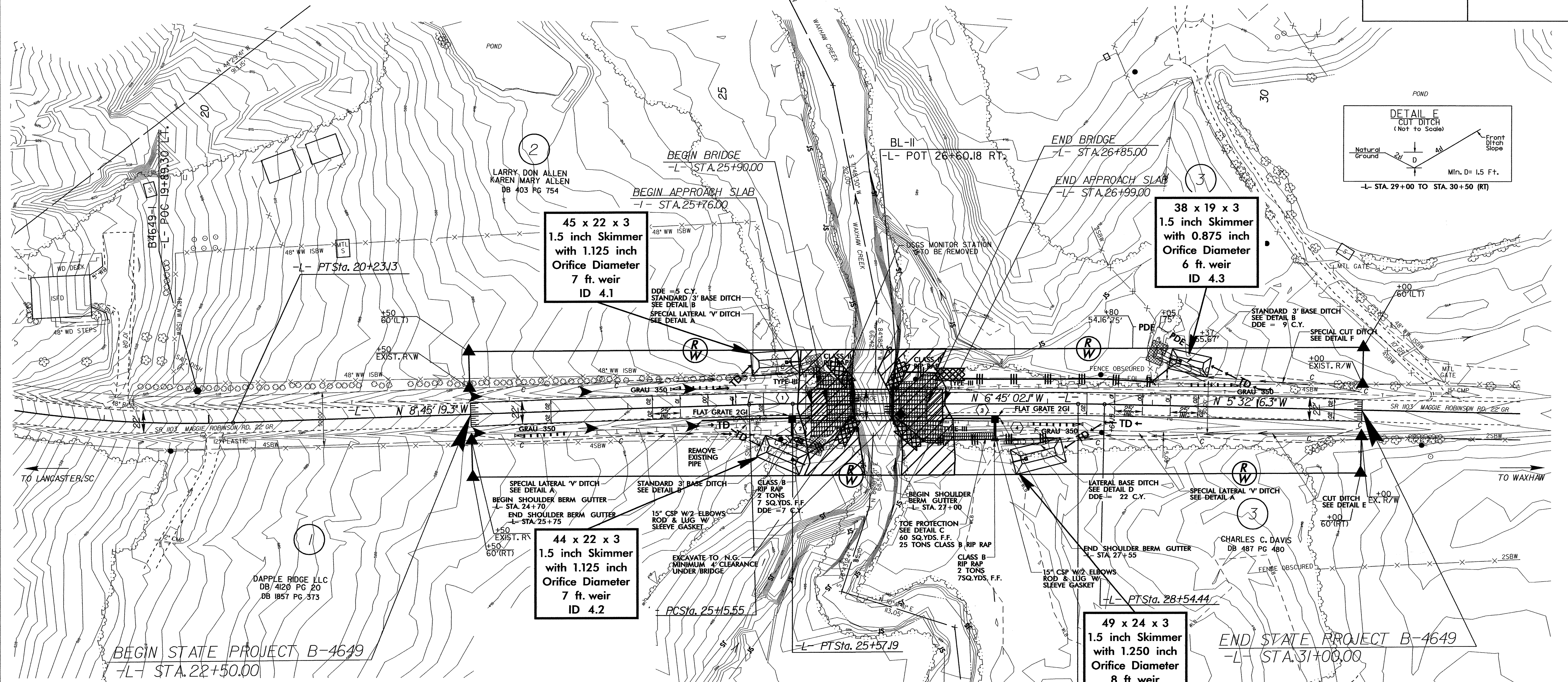
- NOTES:**
1. SEED AND PLACE MATTING FOR EROSION CONTROL ON SIDESLOPES.
  2. LIMIT EARTH DIKE HEIGHT TO 5 FT.



PROJECT REFERENCE NO.	SHEET NO.
<b>B-4649</b>	EC-4/CONST.4
RW SHEET NO.	
ROADWAY DESIGN ENGINEER	HYDRAULICS ENGINEER



NAD 83

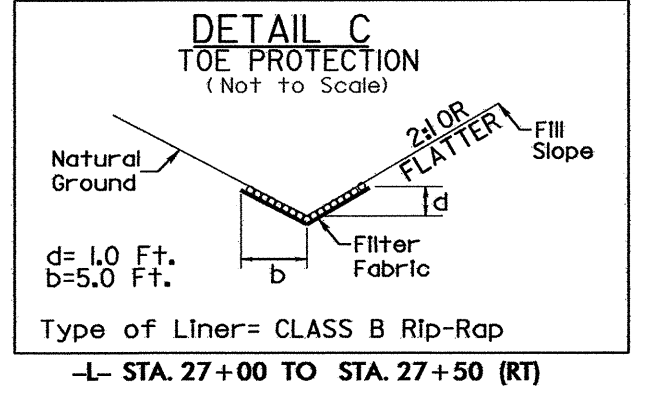


**ENVIRONMENTALLY SENSITIVE AREA**  
SEE PROJECT SPECIAL PROVISIONS

**CLEARING AND GRUBBING**  
EROSION CONTROL FOR  
CONSTRUCTION SHEET 4

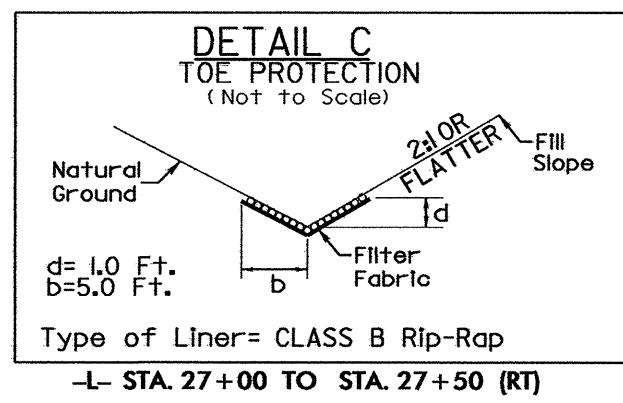
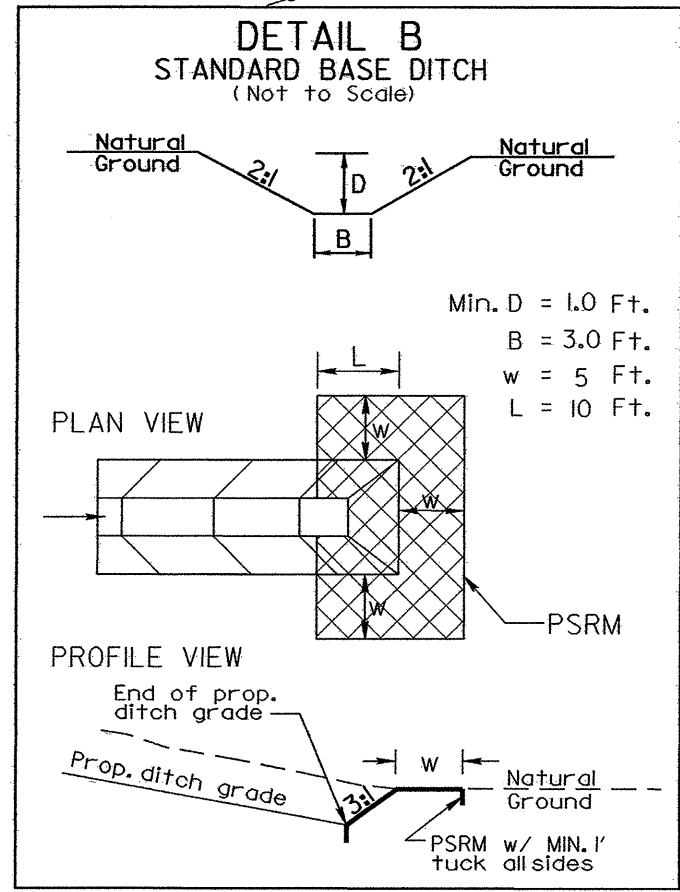
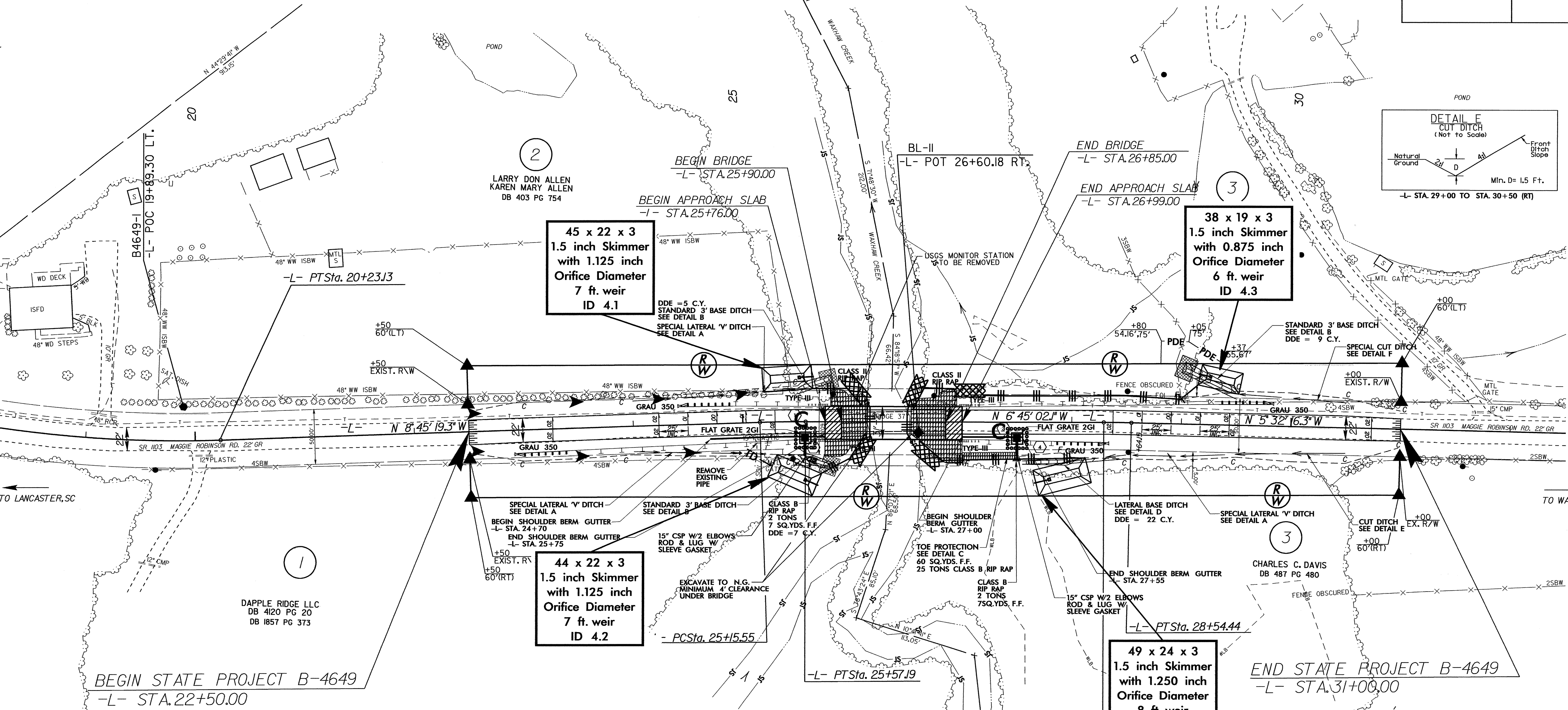
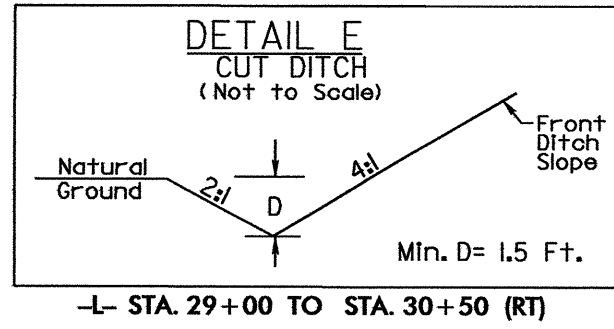
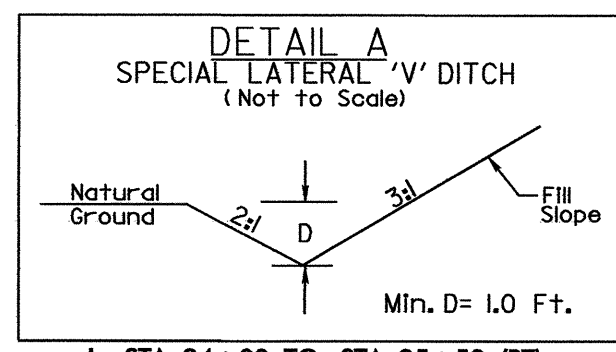
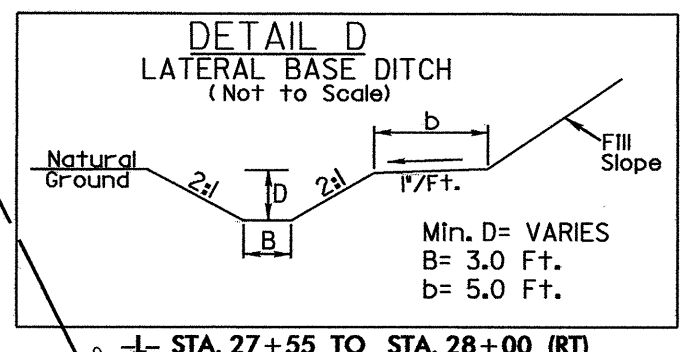
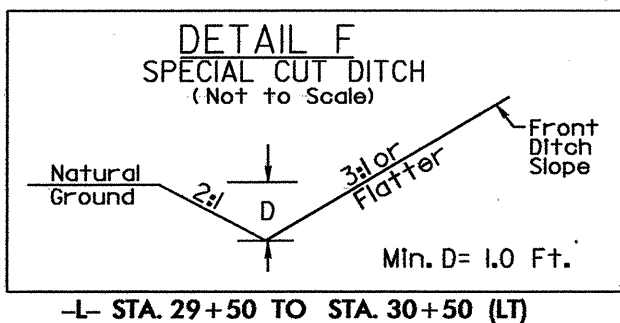
**NOTE:**  
PLACE TEMPORARY ROCK SILT CHECKS TYPE - A AT  
DRAINAGE OUTLETS.

**NOTE:**  
UTILIZE SKIMMER BASIN  
AS STILLING BASIN WHERE APPLICABLE.



8/17/99  
 REVISIONS  
 29-MAY-2008 16:20  
 C:\p\pp\o\ec\environmental\design\4649\_ec\_psh4.dgn  
 16:20  
 4649.ec\_psh4.dgn

PROJECT REFERENCE NO.	SHEET NO.
<b>B-4649</b>	EC-5/CONST.4
RW SHEET NO.	
ROADWAY DESIGN ENGINEER	HYDRAULICS ENGINEER



**NOTE:**  
UTILIZE SKIMMER BASIN  
AS STILLING BASIN WHERE APPLICABLE.

8/17/99  
REVISIONS  
29-MAY-2008 15:52  
R:\proj\p08\ec-5\environmental\design\B-4649\_EC\_psh4.dgn  
R:\proj\p08\ec-5\environmental\design\B-4649\_EC\_psh4.dgn