

STATE OF NORTH CAROLINA
DIVISION OF HIGHWAYS

STATE PROJECT REFERENCE NO.	SHEET NO.
B-4631	TCP-1

**PLAN FOR PROPOSED
TRAFFIC CONTROL, MARKING & DELINEATION
RUTHERFORD COUNTY**

B-4631

ROADWAY STANDARD DRAWINGS

THE FOLLOWING ROADWAY STANDARDS AS APPEAR IN "ROADWAY STANDARD DRAWINGS" - PROJECT SERVICES UNIT-N.C. DEPARTMENT OF TRANSPORTATION-RALEIGH, N.C., DATED JULY 2006 ARE APPLICABLE TO THIS PROJECT AND BY REFERENCE HEREBY ARE CONSIDERED A PART OF THESE PLANS:

STD. NO.	TITLE
1101.03	TEMPORARY ROAD CLOSURES
1101.11	TRAFFIC CONTROL DESIGN TABLES
1110.01	STATIONARY WORK ZONE SIGNS
1130.01	DRUM
1145.01	BARRICADES
1205.01	PAVEMENT MARKINGS - LINE TYPES & OFFSETS
1205.02	PAVEMENT MARKINGS - 2 LANE & MULTILANE ROADWAYS
1205.12	PAVEMENT MARKINGS - BRIDGES
1261.01	GUARDRAIL & BARRIER DELINEATOR SPACING
1261.02	GUARDRAIL & BARRIER DELINEATOR TYPES
1262.01	GUARDRAIL END DELINEATION

INDEX OF SHEETS

SHEET NO.	TITLE
TCP-1	LIST OF APPLICABLE ROADWAY STANDARD DRAWINGS, LEGEND, INDEX OF SHEETS AND FINAL PAVEMENT MARKING SCHEDULE
TCP-2	PROJECT NOTES AND PHASING
TCP-3	DETOUR ROUTE AND BARRICADE PLACEMENT
SD-1	SPECIAL SIGN DESIGN

LEGEND

- GENERAL**
- DIRECTION OF TRAFFIC FLOW
 - NORTH ARROW
 - PROPOSED PVMT. EXIST. PVMT.
 - WORK AREA
 - REMOVAL OF EXISTING PAVEMENT

- TRAFFIC CONTROL DEVICES**
- TYPE I BARRICADE
 - TYPE II BARRICADE
 - TYPE III BARRICADE
 - CONE
 - DRUM SKINNY DRUM
 - FLASHING ARROW PANEL (TYPE C)
 - STATIONARY SIGN
 - PORTABLE SIGN
 - STATIONARY OR PORTABLE SIGN
 - CRASH CUSHION
 - CHANGEABLE MESSAGE SIGN
 - TRUCK MOUNTED IMPACT ATTENUATOR (TMIA)
 - POLICE
 - FLAGGER

FINAL PAVEMENT MARKING SCHEDULE

SYMBOL	DESCRIPTION	PAY ITEM QUANTITY BREAKDOWN		TOTAL QUANTITY	
PAVEMENT MARKINGS					
PAINT (4")					
PA	WHITE EDGELINE (2X)	5200	LF		
PI	YELLOW DOUBLE CENTER (2X)	5200	LF		
				TOTAL	10400 LF

NOTE: FOR EACH PAINT PAVEMENT MARKING ITEM, 1X IMPLIES A SINGLE APPLICATION, 2X IMPLIES TWO APPLICATIONS, AND 3X IMPLIES THREE APPLICATIONS.

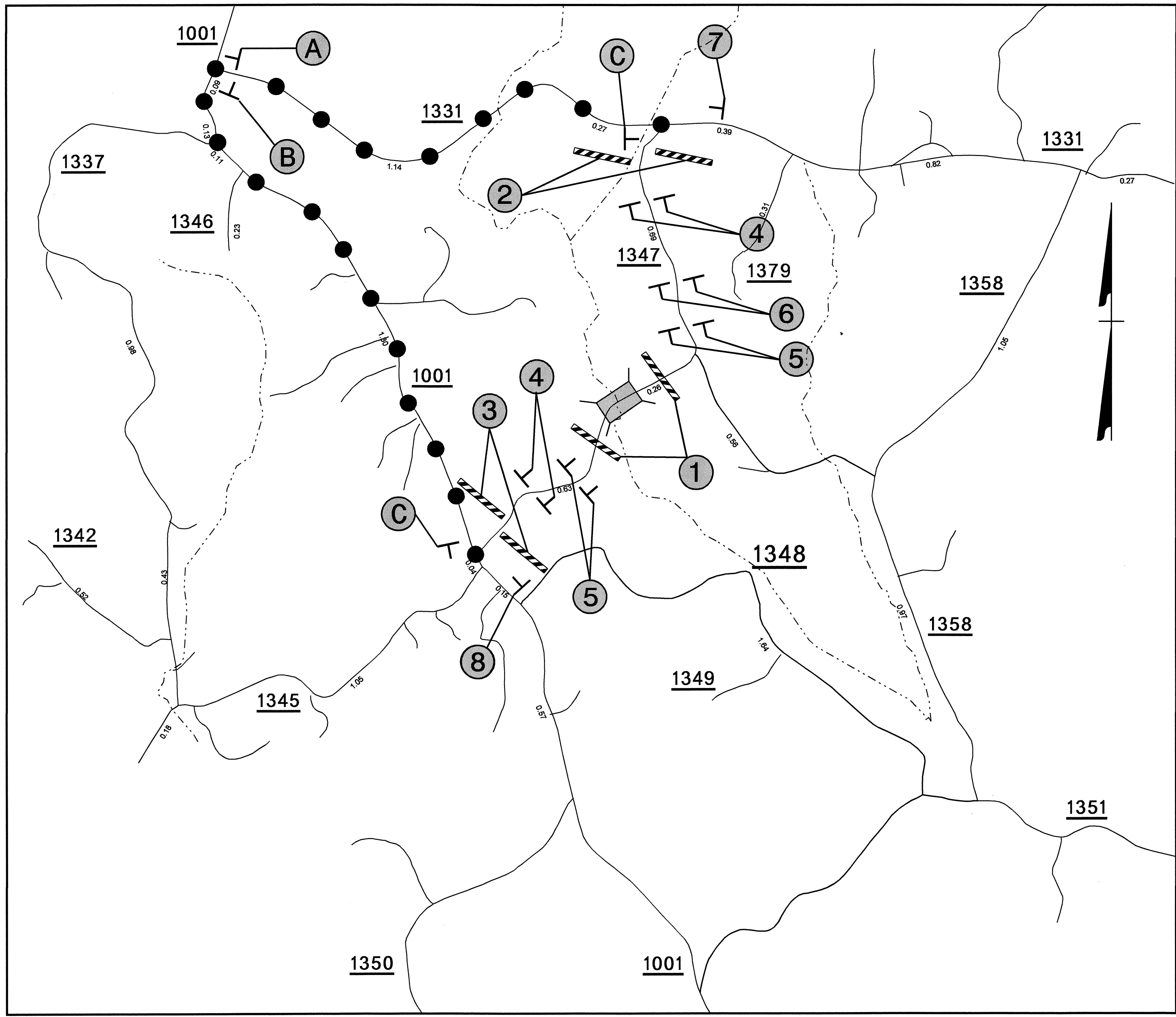
- PAVEMENT MARKINGS**
- CRYSTAL/CRYSTAL PAVEMENT MARKER
 - YELLOW/YELLOW PAVEMENT MARKER
 - CRYSTAL/RED PAVEMENT MARKER
 - PAVEMENT MARKING SYMBOLS

TIP PROJECT:

28-APR-2008 13:49
\\dot\dfs\00101\proj\1\ipproj\objects-b\4631\traffic\trafficcontrol\top\final\top-b-4631-rc-top.ldgn
J:\tr\ell AT WZ 10224166

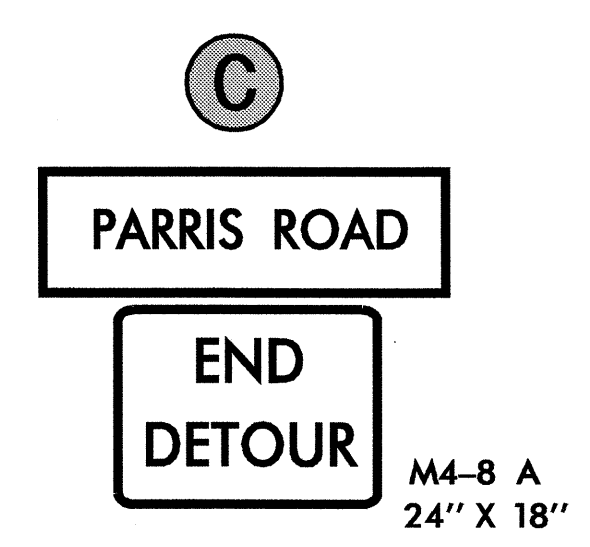
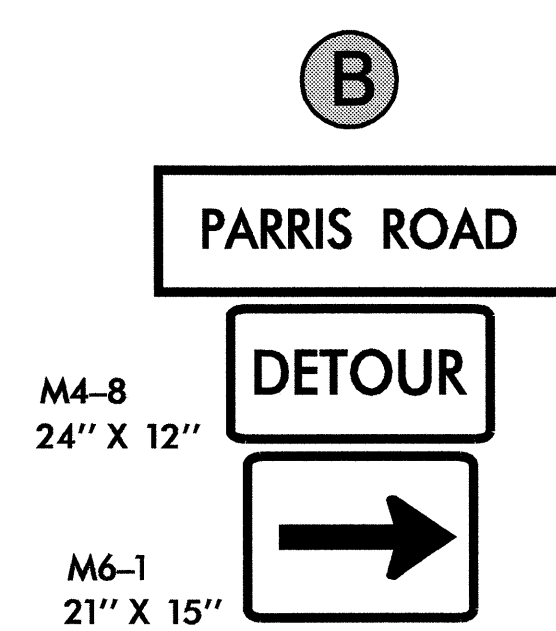
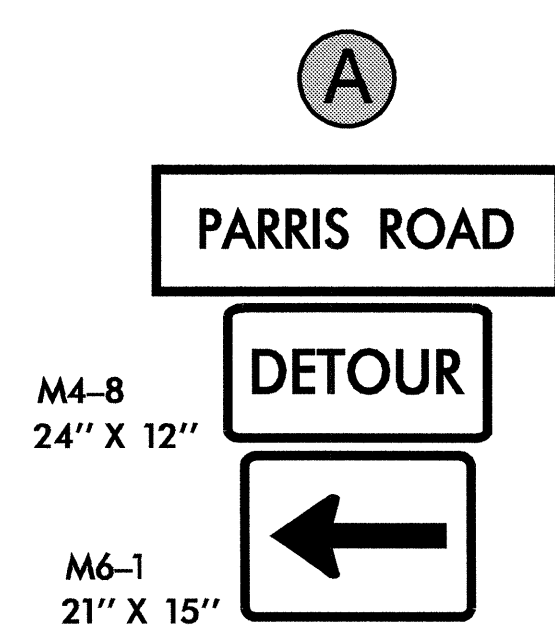
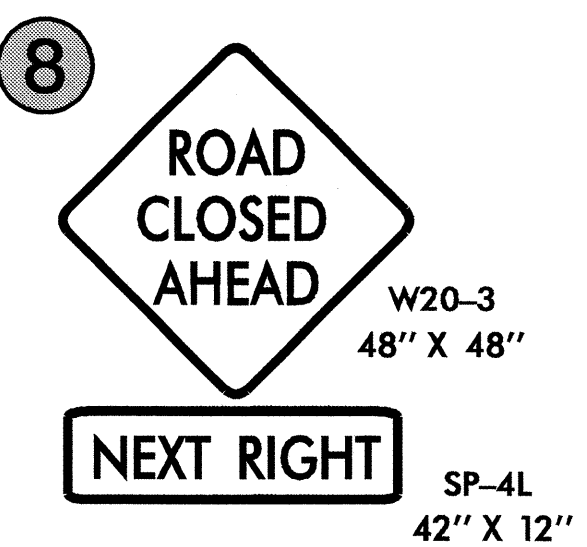
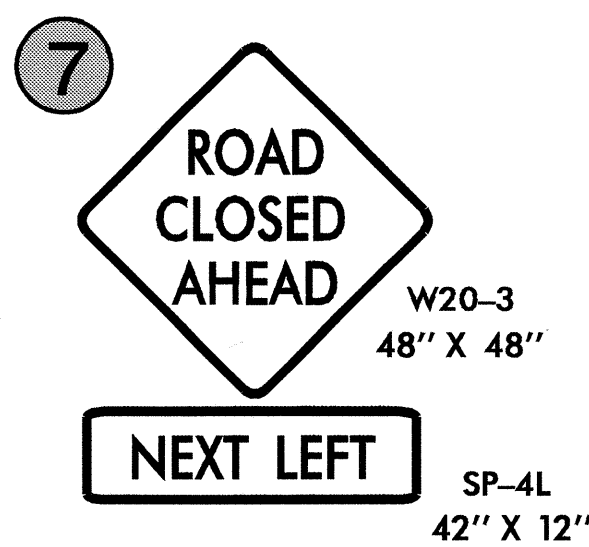
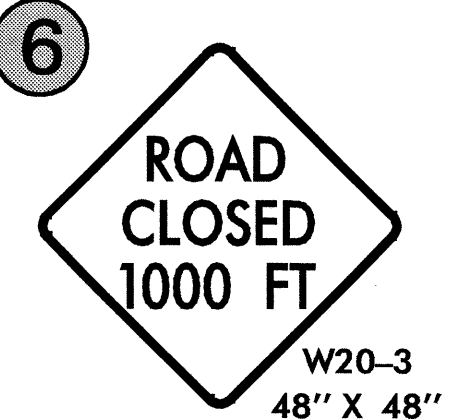
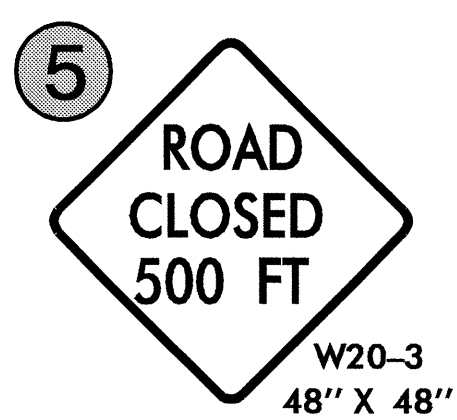
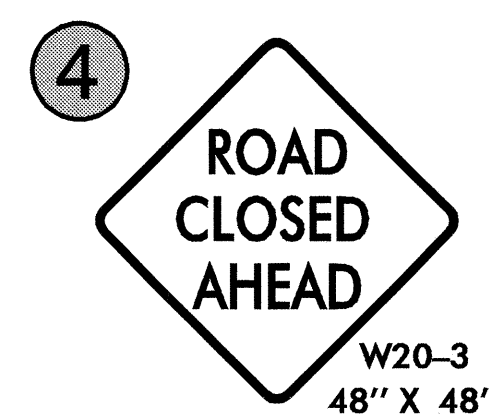
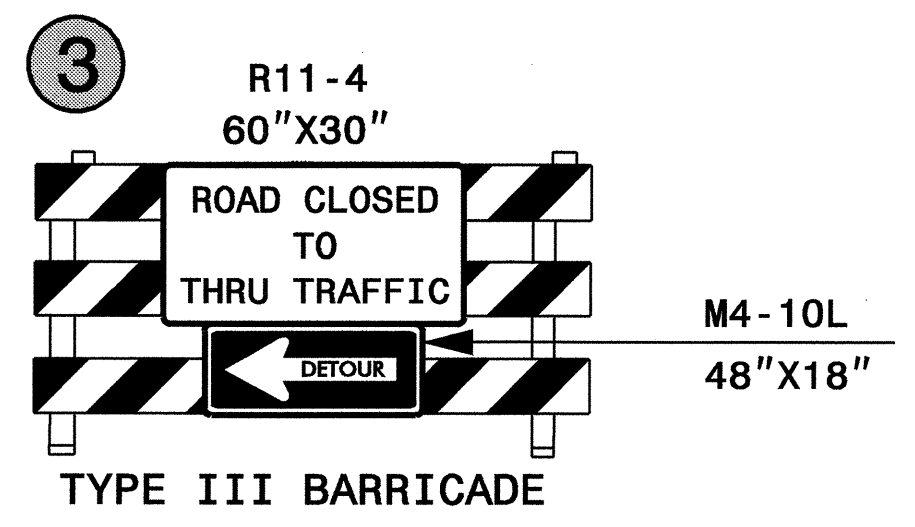
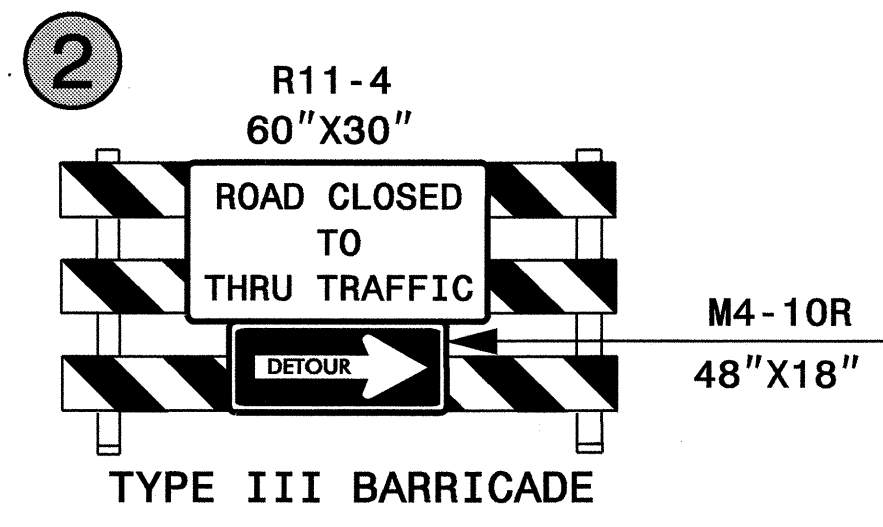
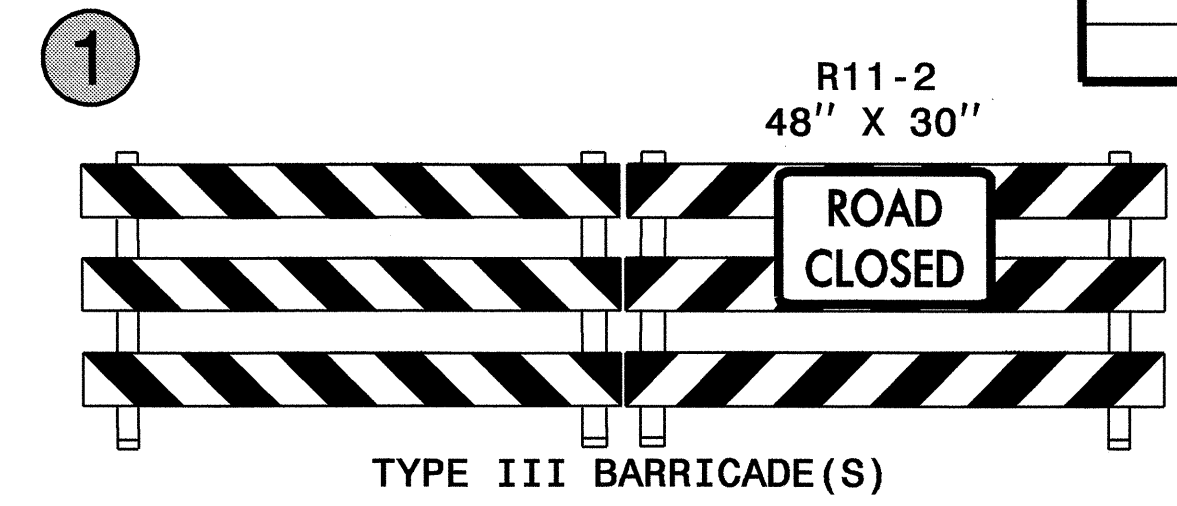
APPROVED: _____ DATE: _____	PLAN PREPARED BY: N.C.D.O.T. WORK ZONE TRAFFIC CONTROL UNIT
	J. STUART BOURNE, PE TRAFFIC CONTROL ENGINEER
	JOSEPH ISHAK, PE TRAFFIC CONTROL PROJECT ENGINEER
	J. L. PORTANOVA, PE TRAFFIC CONTROL PROJECT DESIGN ENGINEER
	JOE FUTRELL TRAFFIC CONTROL DESIGN ENGINEER

VICINITY MAP: RUTHERFORD COUNTY



OFF-SITE DETOUR ROUTE ●—●—●

NOTES:
 1. SEE SHEET SD-1 FOR DETOUR SIGN DESIGN.
 2. REFER TO RSD 1101.03, SHEET 1 OF 9, FOR SIGN DISTANCES.



APPROVED: _____ DATE: _____	DETOUR ROUTE AND BARRICADE PLACEMENT							
SCALE: NONE DATE: APRIL 08 DWG. BY: JLF DESIGN BY: JLF REVIEWED BY: JLP		REVISIONS <table border="1"> <tr><td> </td><td> </td></tr> <tr><td> </td><td> </td></tr> <tr><td> </td><td> </td></tr> </table>						

28-APR-2008 13:20 p:\projects\4631\traffic\control\top\final_top\top_b-4631_top-3.dgn
 JLF:all AT WZ122106