

STATE OF NORTH CAROLINA
DIVISION OF HIGHWAYS

STATE PROJECT REFERENCE NO.	SHEET NO.
B-4263	TCP-01

**PLAN FOR PROPOSED
TRAFFIC CONTROL, MARKING & DELINEATION
RUTHERFORD COUNTY**

B-4263

TIP PROJECT:

ROADWAY STANDARD DRAWINGS

THE FOLLOWING ROADWAY STANDARDS AS APPEAR IN "ROADWAY STANDARD DRAWINGS"-ROADWAY DESIGN UNIT-N.C. DEPARTMENT OF TRANSPORTATION-RALEIGH, N.C., DATED JULY 2006 ARE APPLICABLE TO THIS PROJECT AND BY REFERENCE HEREBY ARE CONSIDERED A PART OF THESE PLANS:

STD. NO.	TITLE
1101.03	TEMPORARY ROAD CLOSURES
1110.01	STATIONARY WORK ZONE SIGNS
1145.01	BARRICADES
1205.01	PAVEMENT MARKINGS - LINE TYPES & OFFSETS
1205.02	PAVEMENT MARKINGS - 2 LANE & MULTILANE ROADWAYS
1205.12	PAVEMENT MARKINGS - BRIDGES
1261.01	GUARDRAIL & BARRIER DELINEATOR SPACING
1261.02	GUARDRAIL & BARRIER DELINEATOR TYPES
1262.01	GUARDRAIL END DELINEATION
1264.01	OBJECT MARKERS
1264.02	PLACEMENT OF OBJECT MARKERS

INDEX OF SHEETS

SHEET NO.	TITLE
TCP-01	LIST OF APPLICABLE ROADWAY STANDARD DRAWINGS, PROJECT PHASING, PAVEMENT MARKING SCHEDULE, INDEX OF SHEETS, LEGEND, AND GENERAL NOTES
TCP-02	OFF-SITE DETOUR ROUTE AND SIGNING
SD-01	SPECIAL SIGN DESIGN

GENERAL NOTES

ADAPT THE TRAFFIC CONTROL PLANS, WHEN DIRECTED BY THE ENGINEER, TO MEET FIELD CONDITIONS TO PROVIDE SAFE AND EFFICIENT TRAFFIC MOVEMENT. CHANGES MAY BE REQUIRED WHEN PHYSICAL DIMENSIONS IN THE DETAIL DRAWINGS, STANDARD DETAILS AND ROADWAY DETAILS ARE NOT ATTAINABLE, OR RESULT IN DUPLICATE, OR UNDESIRABLE OVERLAPPING OF DEVICES. MODIFICATION MAY INCLUDE: MOVING, SUPPLEMENTING, COVERING OR REMOVAL OF DEVICES.

THE FOLLOWING GENERAL NOTES APPLY AT ALL TIMES FOR THE DURATION OF THE CONSTRUCTION PROJECT, EXCEPT WHEN OTHERWISE NOTED IN THE PLAN, OR DIRECTED BY THE ENGINEER.

TRAFFIC PATTERN ALTERATIONS

A) NOTIFY THE ENGINEER ONE (1) MONTH PRIOR TO ANY TRAFFIC PATTERN ALTERATION.

SIGNING

- B) PROVIDE PERMANENT SIGNING WITHIN THE PROJECT LIMITS.
- C) PROVIDE DETOUR SIGNING WITHIN AND OFF THE PROJECT LIMITS.
- D) THE CONTRACTOR WILL COVER OR REMOVE ALL DETOUR SIGNS WITHIN AND OFF THE PROJECT LIMITS WHEN A DETOUR IS NOT IN OPERATION.
- E) ENSURE ALL NECESSARY SIGNING IS IN PLACE PRIOR TO ALTERING ANY TRAFFIC PATTERN.

TRAFFIC CONTROL DEVICES

F) PLACE TYPE III BARRICADES, WITH "ROAD CLOSED" SIGN R11-2 ATTACHED, OF SUFFICIENT LENGTH TO CLOSE ENTIRE ROADWAY. STAGGER OR OVERLAP BARRICADES TO ALLOW FOR INGRESS OR EGRESS.

PAVEMENT MARKINGS AND MARKERS

G) INSTALL PAVEMENT MARKINGS AND PAVEMENT MARKERS ON THE FINAL SURFACE AS FOLLOWS:

ROAD NAME	MARKING	MARKER
OLD LINCOLN ROAD (SR 1549)	PAINT	NONE

H) PLACE AT LEAST TWO APPLICATIONS OF PAINT PAVEMENT MARKINGS ON THE FINAL WEARING SURFACE ON NEW ASPHALT PAVEMENT. PLACE ADDITIONAL APPLICATIONS OF PAINT UPON SUFFICIENT DRYING TIME, AS DETERMINED BY THE ENGINEER.


I) TIE PROPOSED PAVEMENT MARKING LINES TO EXISTING PAVEMENT MARKING LINES.

LEGEND

GENERAL
 NORTH ARROW

 WORK AREA

TRAFFIC CONTROL DEVICES

 TYPE III BARRICADE

 STATIONARY SIGN

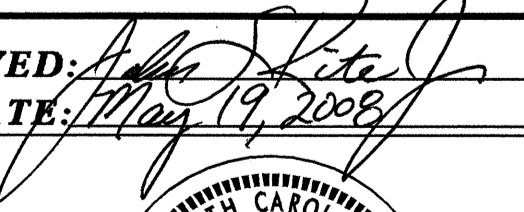

PROJECT PHASING

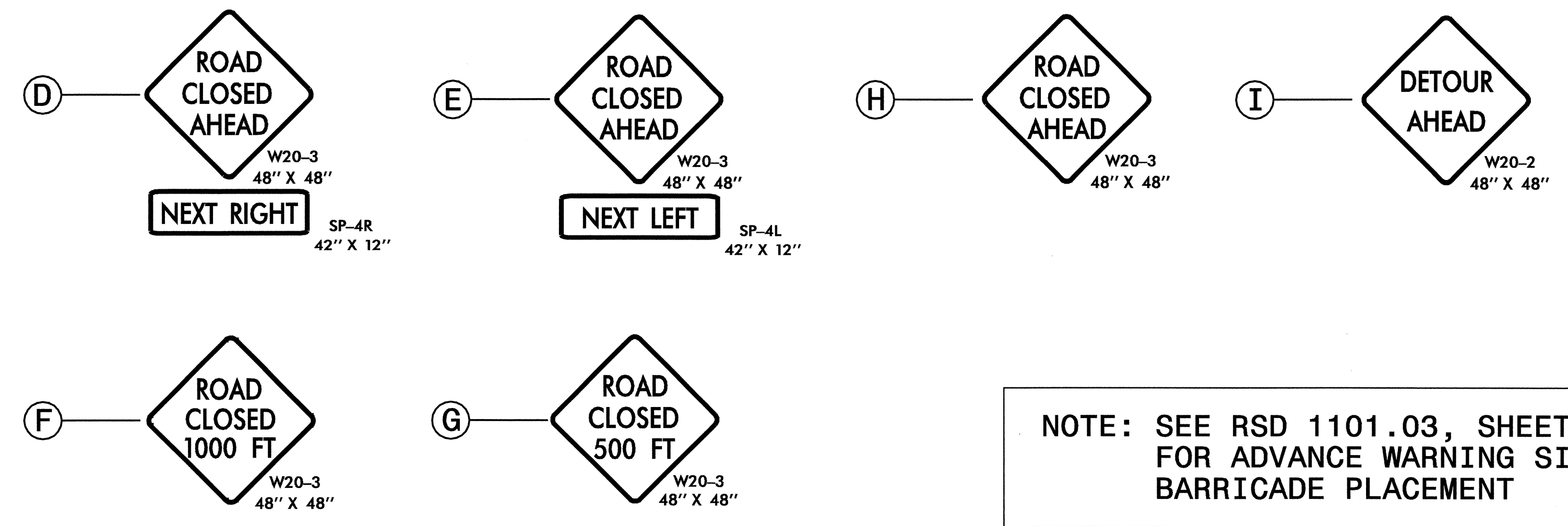
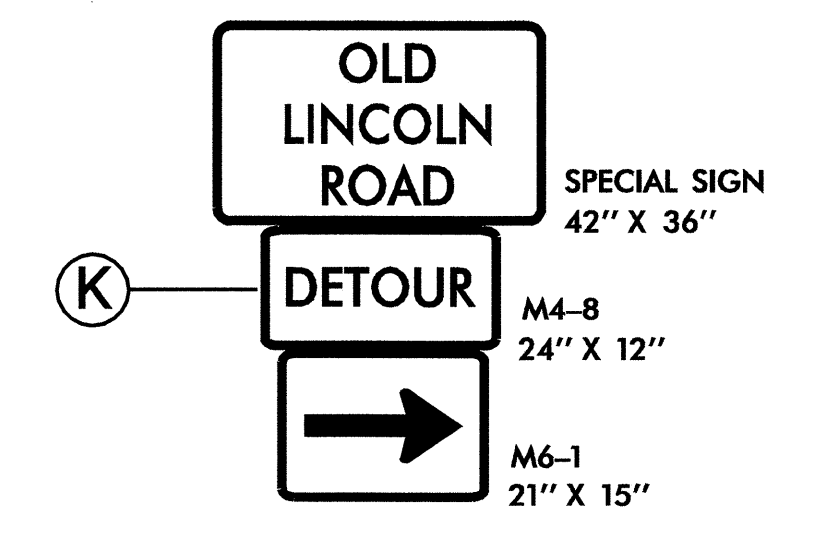
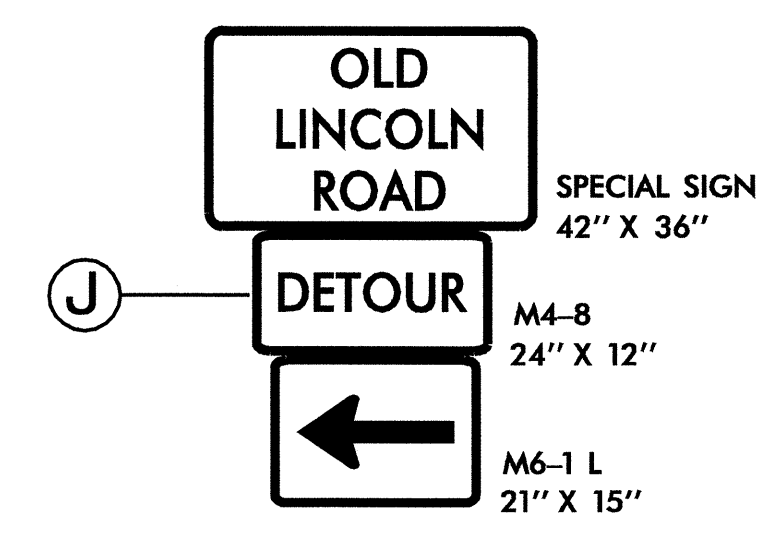
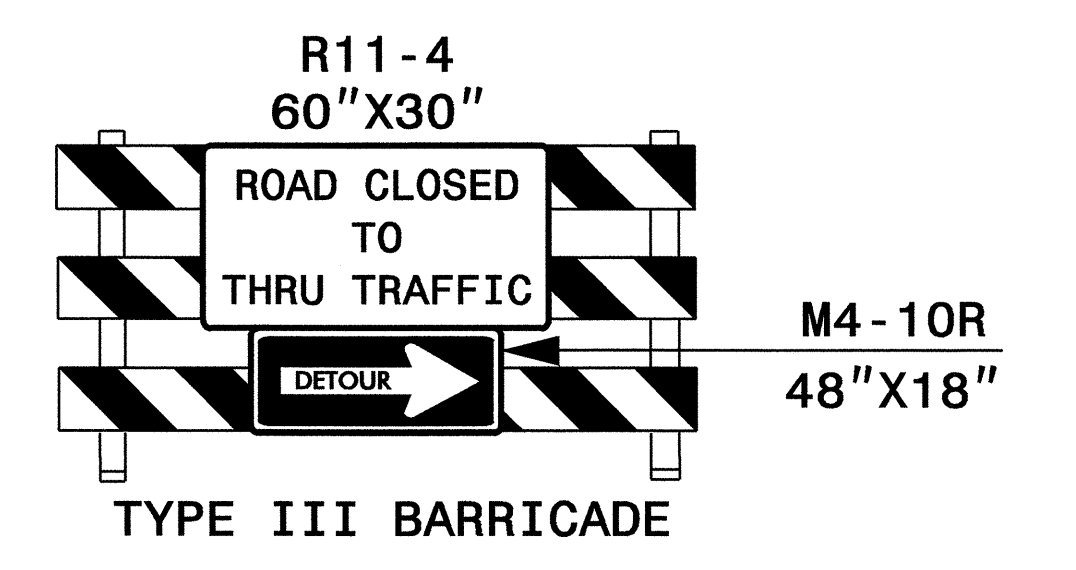
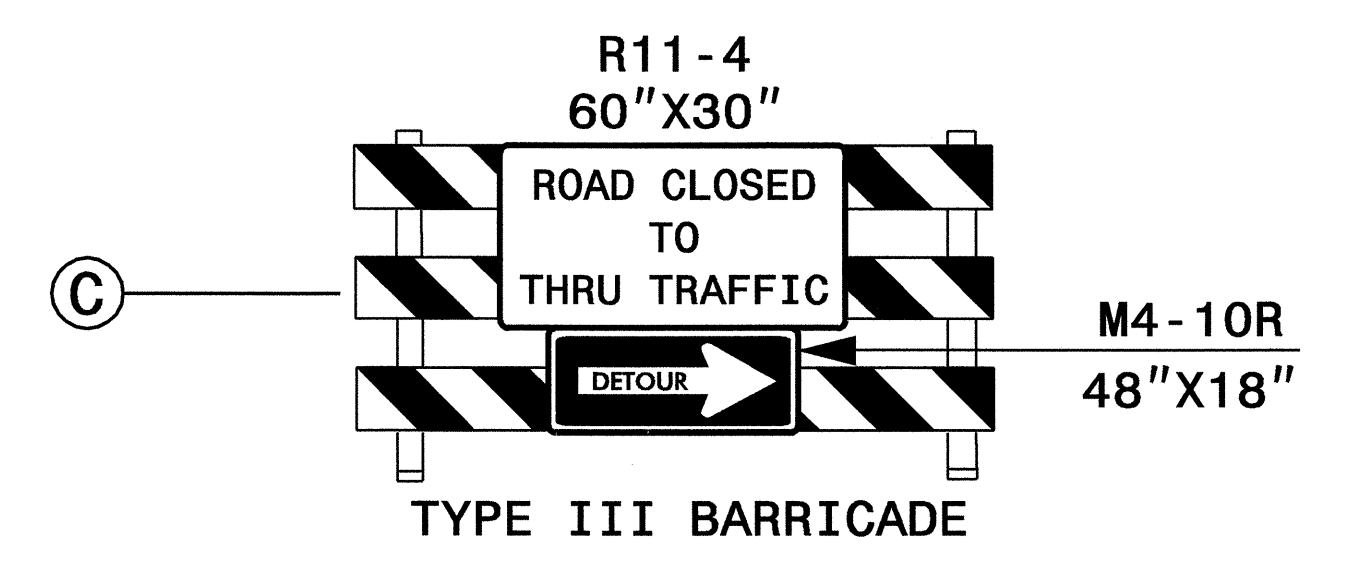
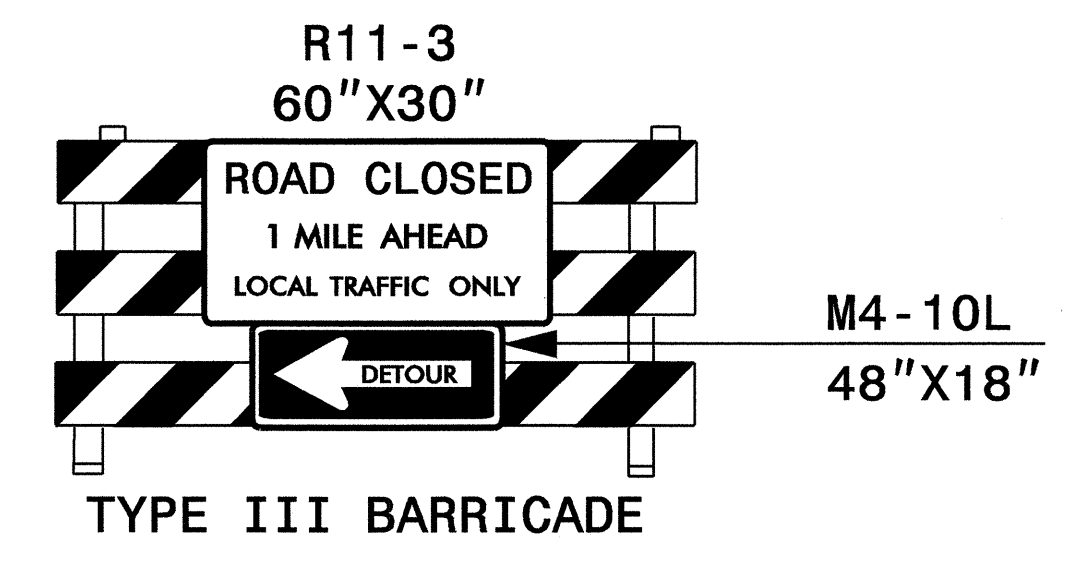
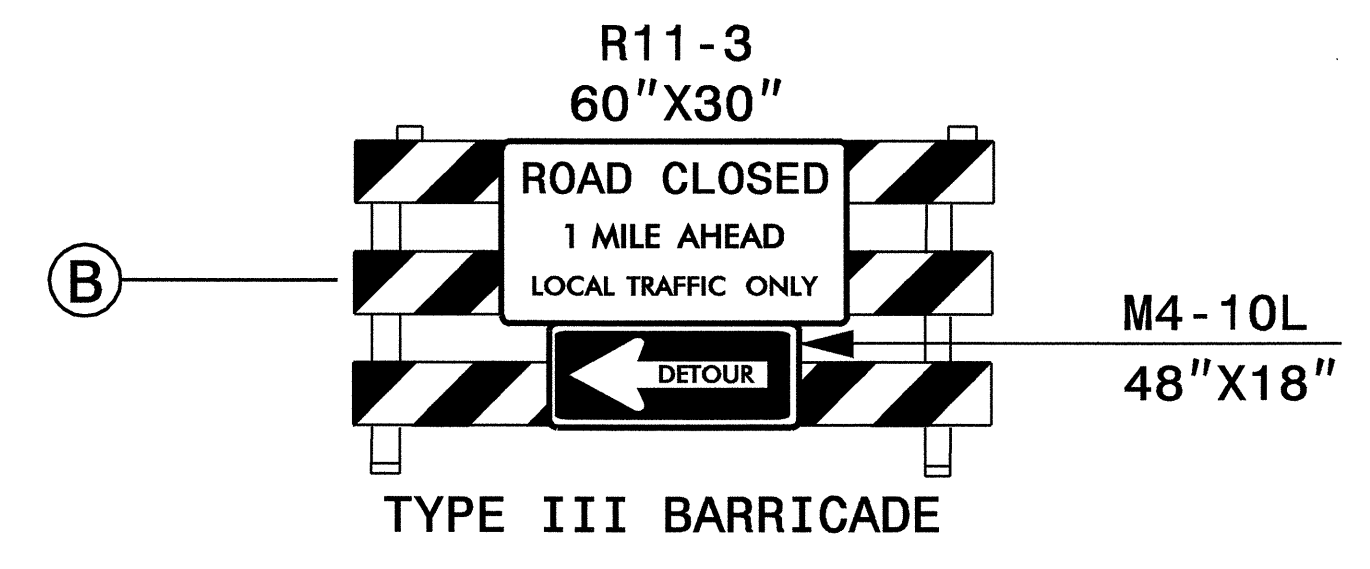
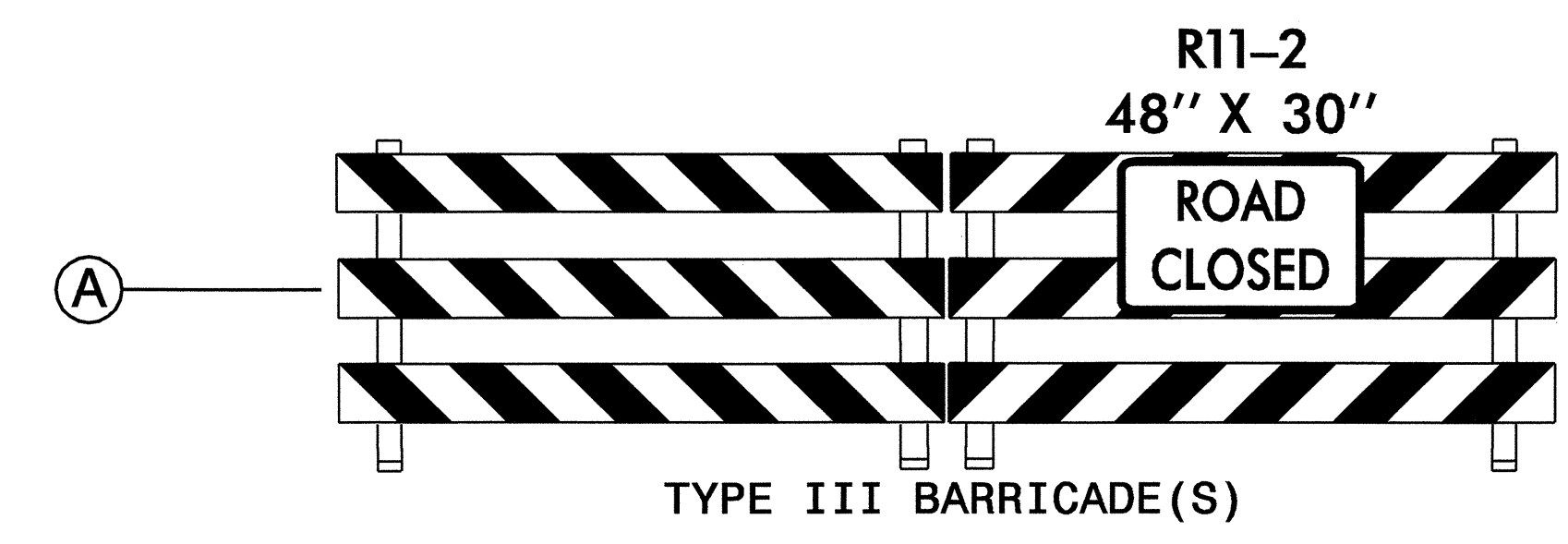
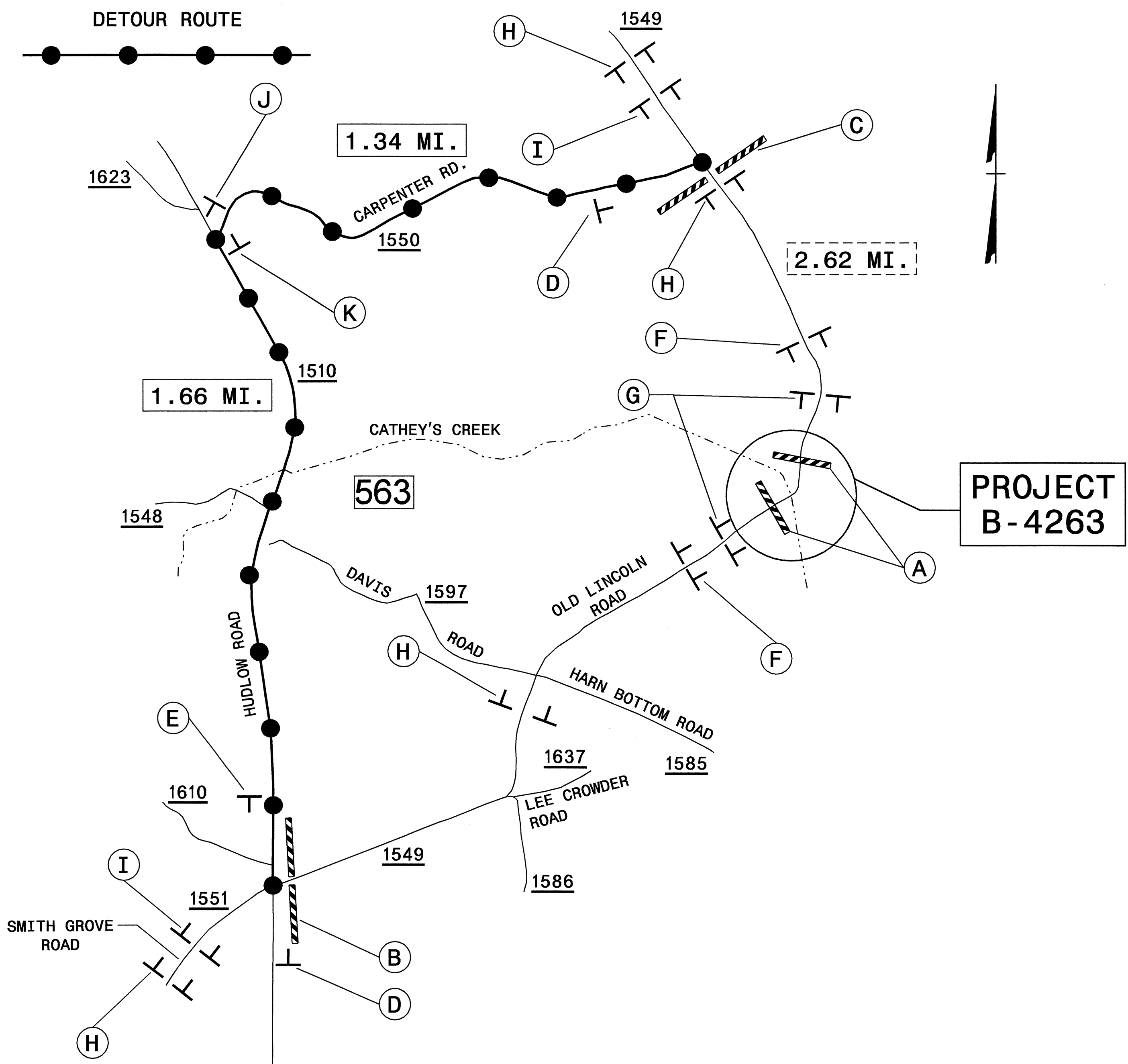
NOTE: MAINTAIN LOCAL ACCESS TO RESIDENTS AT ALL TIMES DURING CONSTRUCTION.

- 1) USING ROADWAY STANDARD DRAWING 1101.03, SHEET 1 OF 9 AND TCP-02, CLOSE SR 1549 AND PLACE TRAFFIC ON DETOUR ROUTE.
- 2) REMOVE EXISTING STRUCTURE AND CONSTRUCT PROPOSED ROADWAY, BRIDGE AND APPROACHES, UP TO AND INCLUDING THE FINAL LAYER OF SURFACE COURSE. PLACE FINAL PAVEMENT MARKINGS ON FINAL LAYER OF SURFACE COURSE AND TIE IN WITH EXISTING MARKINGS.
- 3) REMOVE ALL TRAFFIC CONTROL DEVICES AND REOPEN SR 1549 TO TRAFFIC.

PAVEMENT MARKING SCHEDULE

DESCRIPTION	QUANTITY BREAKDOWN	TOTAL QUANTITY
	PAINT (4")	
WHITE EDGELINE	3000 LF	
YELLOW DOUBLE CENTER	3000 LF	
	TOTAL	6000 LF

APPROVED:  DATE: May 19, 2008	PLAN PREPARED BY: N.C.D.O.T. WORK ZONE TRAFFIC CONTROL UNIT
SEAL 	STUART BOURNE, P.E. TRAFFIC CONTROL ENGINEER
	J. STEVE KITE, P.E. TRAFFIC CONTROL PROJECT ENGINEER
	DON PARKER TRAFFIC CONTROL PROJECT DESIGN ENGINEER
	ASHVIN PATEL TRAFFIC CONTROL DESIGN ENGINEER / TECHNICIAN



NOTE: SEE RSD 1101.03, SHEET 1 OF 9 FOR ADVANCE WARNING SIGNAGE AND BARRICADE PLACEMENT

APPROVED: <i>[Signature]</i> DATE: 5/7/08	DETOUR ROUTE AND SIGNING	
SEAL:		
SCALE: NONE		REVISIONS
DATE: 02/08		
DWG. BY: AKP		
DESIGN BY: AKP		
REVIEWED BY: DAP		CADD FILE

09-MAY-2008 09:17 \\dot\dfsroot\Proj\TIPProjects-b\4263\trafficcontrol\top\b4263_top_02.dgn akpatel AT WZTC224097