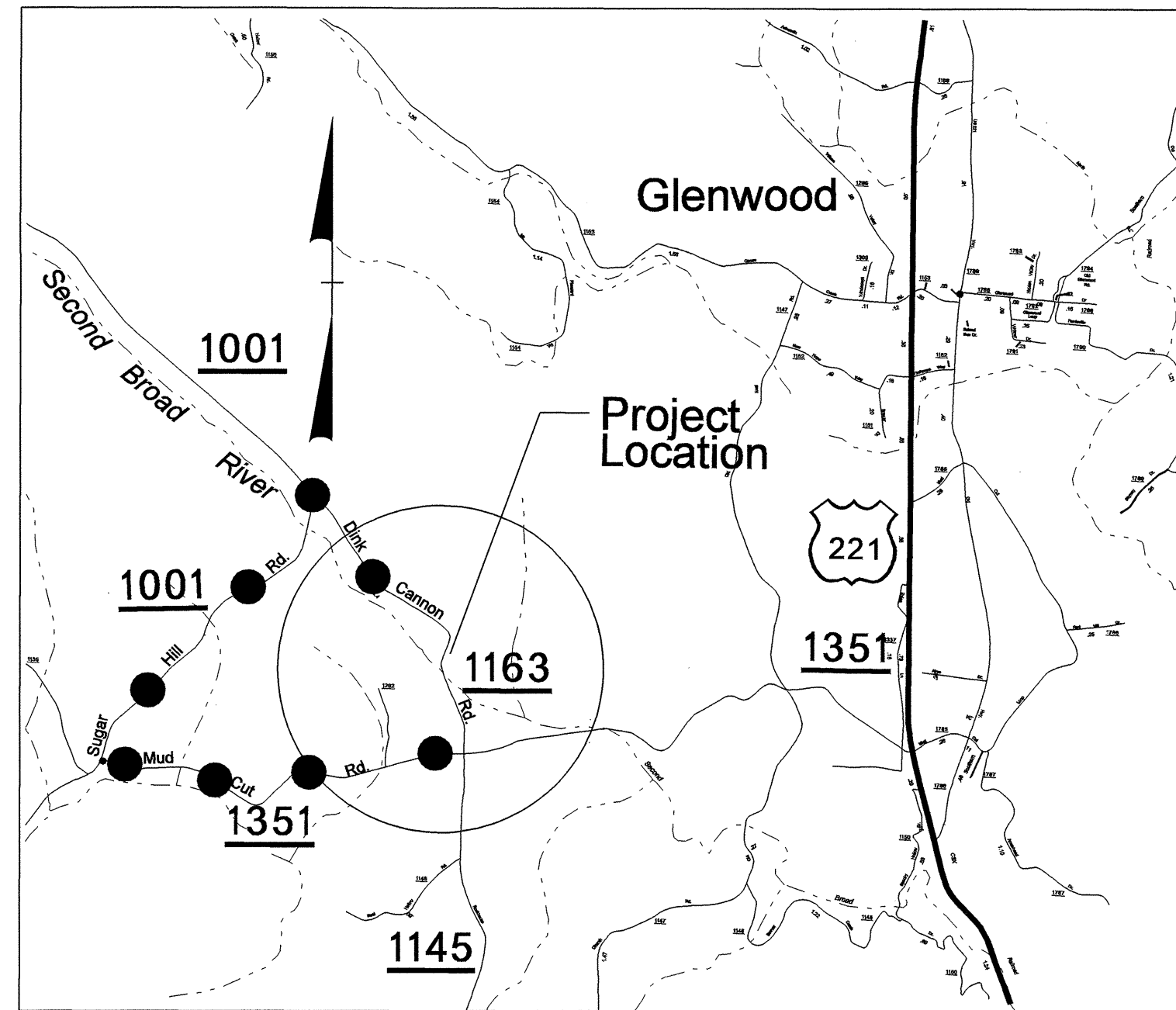
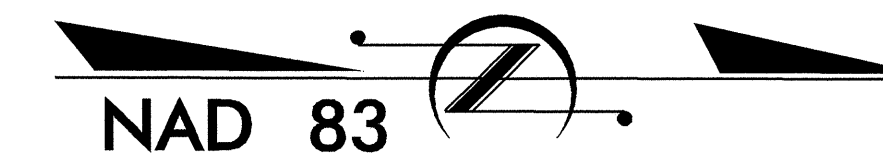


STATE OF NORTH CAROLINA
DIVISION OF HIGHWAYS

**UTILITY BY OTHERS PLANS
McDOWELL COUNTY**

**LOCATION: BRIDGE #42 OVER THE SECOND
BROAD RIVER ON SR 1163**

TYPE OF WORK: UTILITIES BY OTHERS

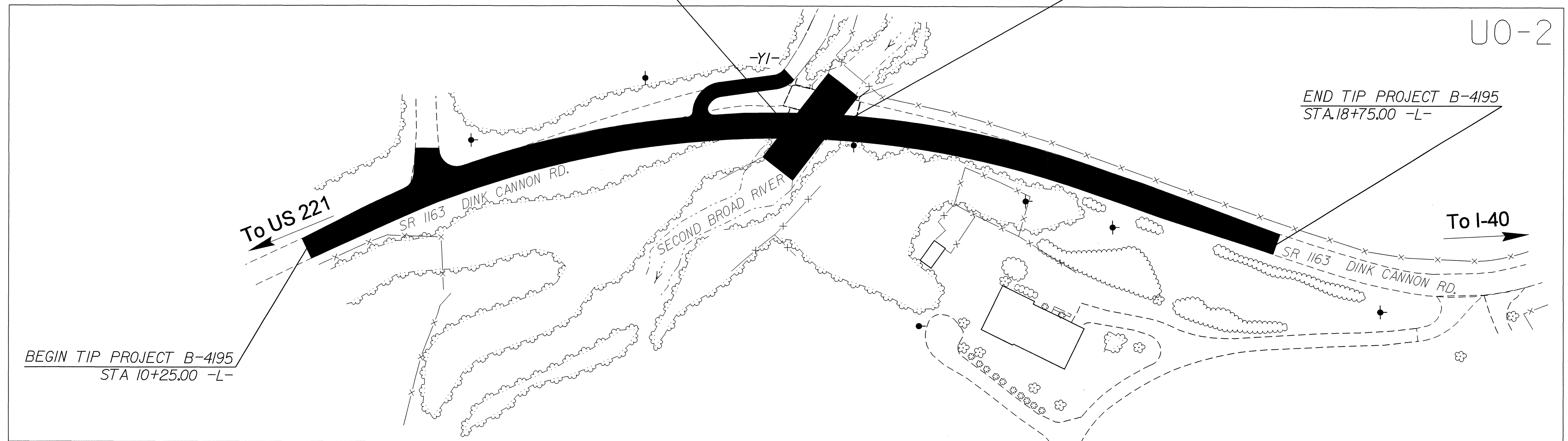


VICINITY MAP

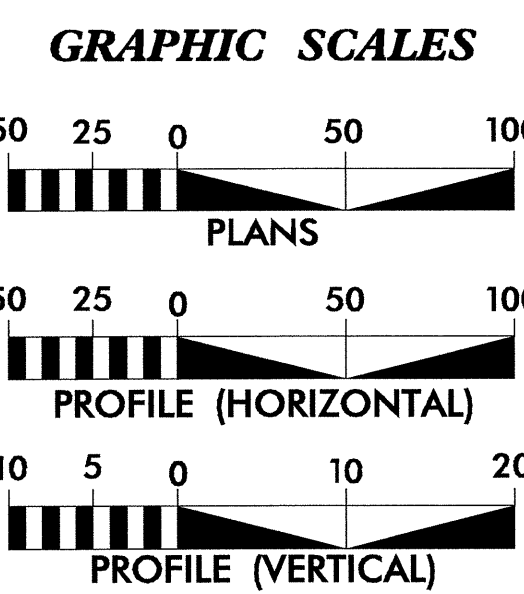
● ● ● ● ● Off Site Detour Route

BEGIN CULVERT
STA.14+48.00 -L-

END CULVERT
STA.14+87.00 -L-



TIP PROJECT: B-4195



INDEX OF SHEETS	
<u>SHEET NO.</u>	<u>DESCRIPTION</u>
UO-1	TITLE SHEET
UO-2	UTILITY BY OTHERS PLAN SHEETS

UTILITY OWNERS ON PROJECT
(1) VERIZON - TELEPHONE
(2) DUKE POWER - POWER DISTRIBUTION

PREPARED IN THE OFFICE OF:
**DIVISION OF HIGHWAYS
PROJECT SERVICES
UTILITY SECTION**

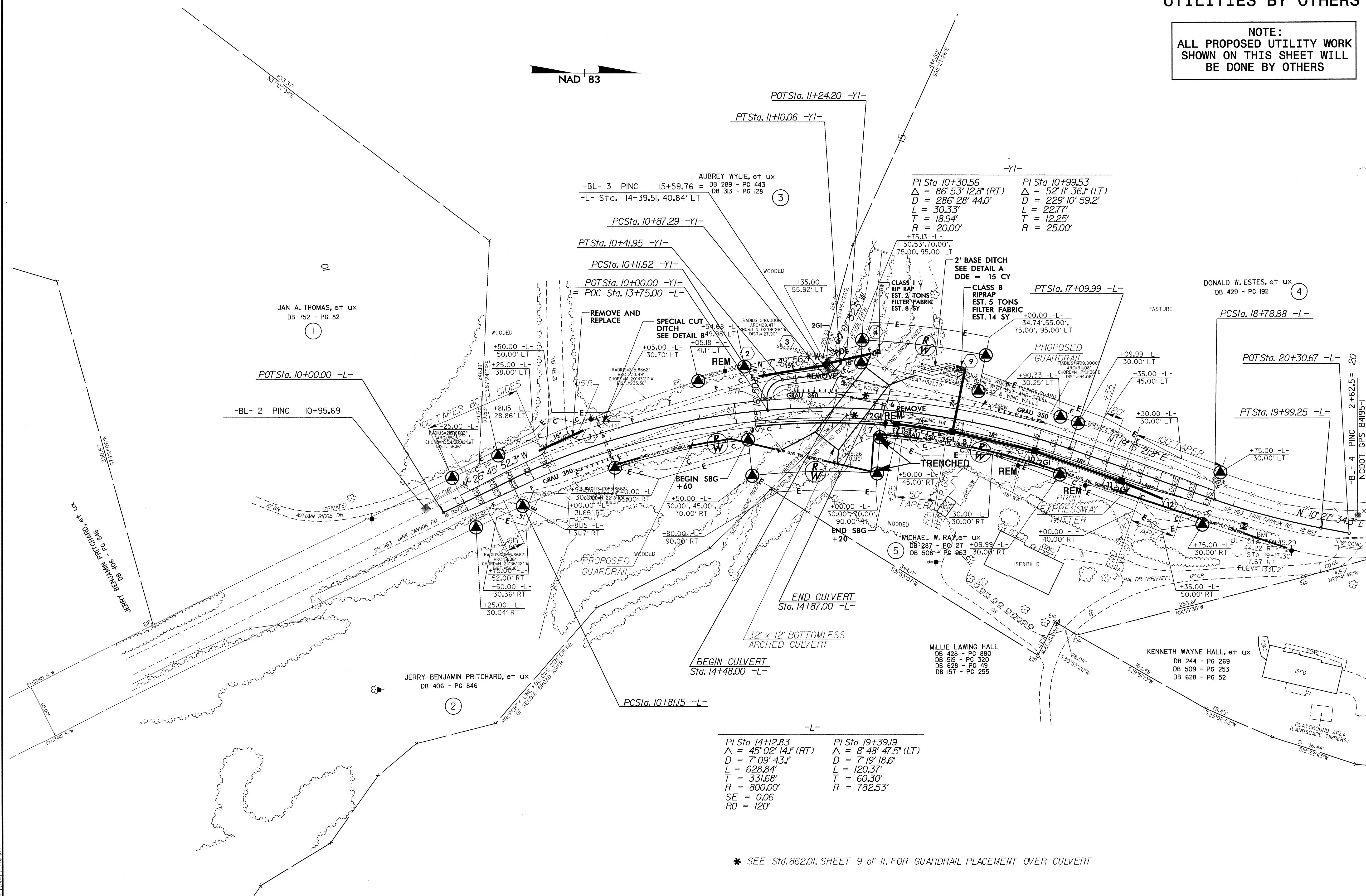
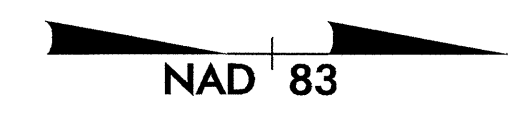
1591 MAIL SERVICES CENTER
RALEIGH NC 27699-1591
PHONE (919) 250-4128
FAX (919) 250-4119

<u>Roger Worthington, P.E.</u>	UTILITIES SECTION ENGINEER
<u>R. B. Wilkins, P.E.</u>	UTILITIES SQUAD LEADER PROJECT ENGINEER
<u>John A. Nigro, P.E.</u>	UTILITIES PROJECT DESIGNER

04-JUN-2008 15:04
C:\Utilities\proj\ut\proj\B4195\ut_title_uoL.psh.dgn
USER: JAMES

UTILITIES BY OTHERS

NOTE:
 ALL PROPOSED UTILITY WORK
 SHOWN ON THIS SHEET WILL
 BE DONE BY OTHERS



PI Sta 14+12.83 PI Sta 19+39.19
 $\Delta = 45^{\circ} 02' 14.1''$ (RT) $\Delta = 8^{\circ} 48' 47.5''$ (LT)
 $D = 7^{\circ} 09' 43.1''$ $D = 7^{\circ} 19' 18.6''$
 $L = 628.84'$ $L = 120.37'$
 $T = 331.68'$ $T = 60.30'$
 $R = 800.00'$ $R = 782.53'$
 $SE = 0.06$
 $RO = 120'$

* SEE Std.862.01, SHEET 9 of 11, FOR GUARDRAIL PLACEMENT OVER CULVERT

5/14/99
 04-JUN-2008 15:05
 r:\proj\pesh\cadd\proj\B4195_ut_4_uo2_psh.dgn