

PROJECT REFERENCE NO. R-5024	SHEET NO. UO-1
RW SHEET NO.	
ROADWAY DESIGN ENGINEER	HYDRAULICS ENGINEER
4135 MENDENHALL OAKS PKWY SUITE 160 HIGH POINT, N. C. 27265	

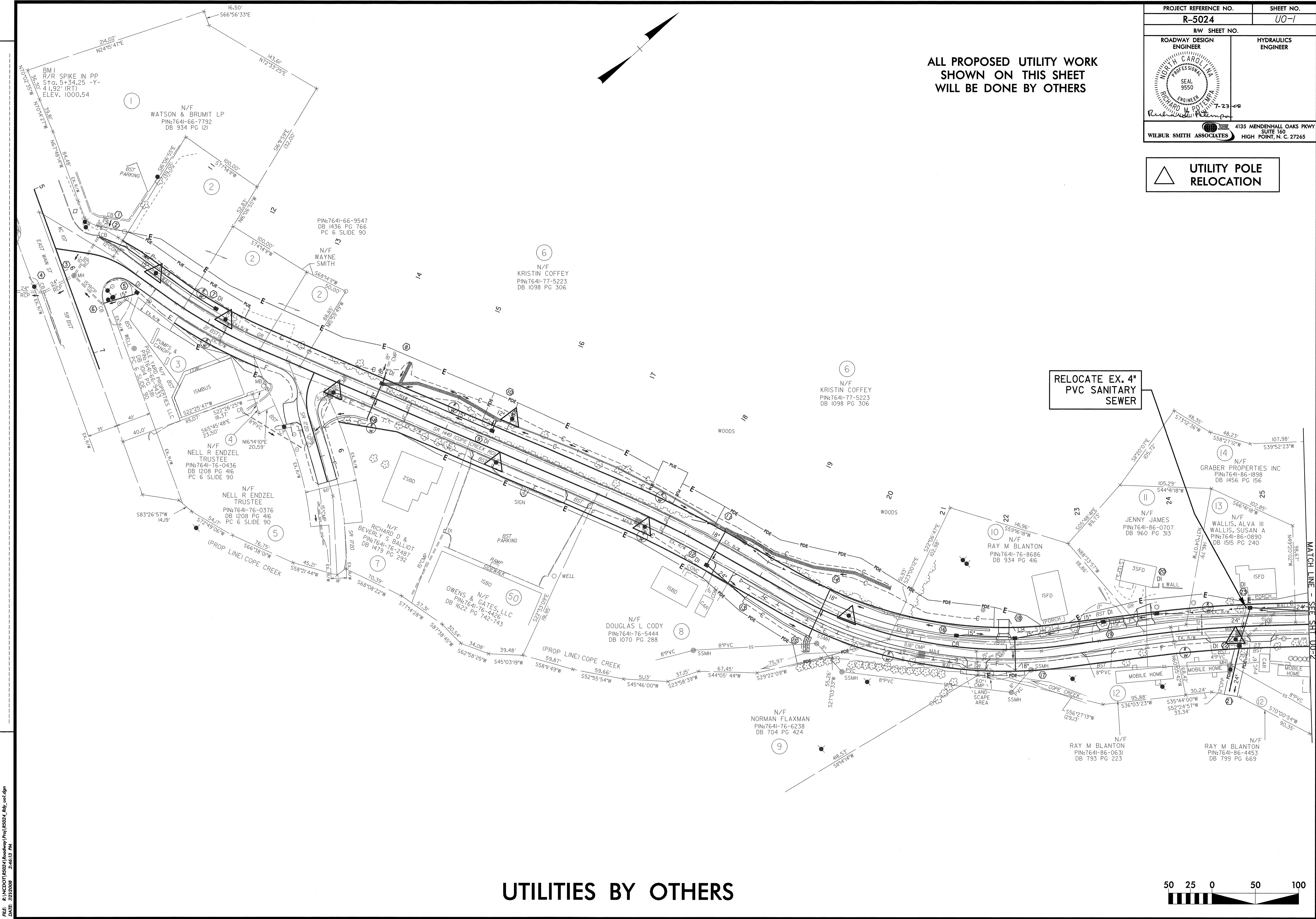
ALL PROPOSED UTILITY WORK
SHOWN ON THIS SHEET
WILL BE DONE BY OTHERS

UTILITY POLE
RELOCATION

REVISIONS

RELOCATE EX. 4"
PVC SANITARY
SEWER

MATCH LINE - SEE SHEET UO-2



FILE: R:\NCSD\16024\16024.dwg
DATE: 7/22/08 3:46:13 PM

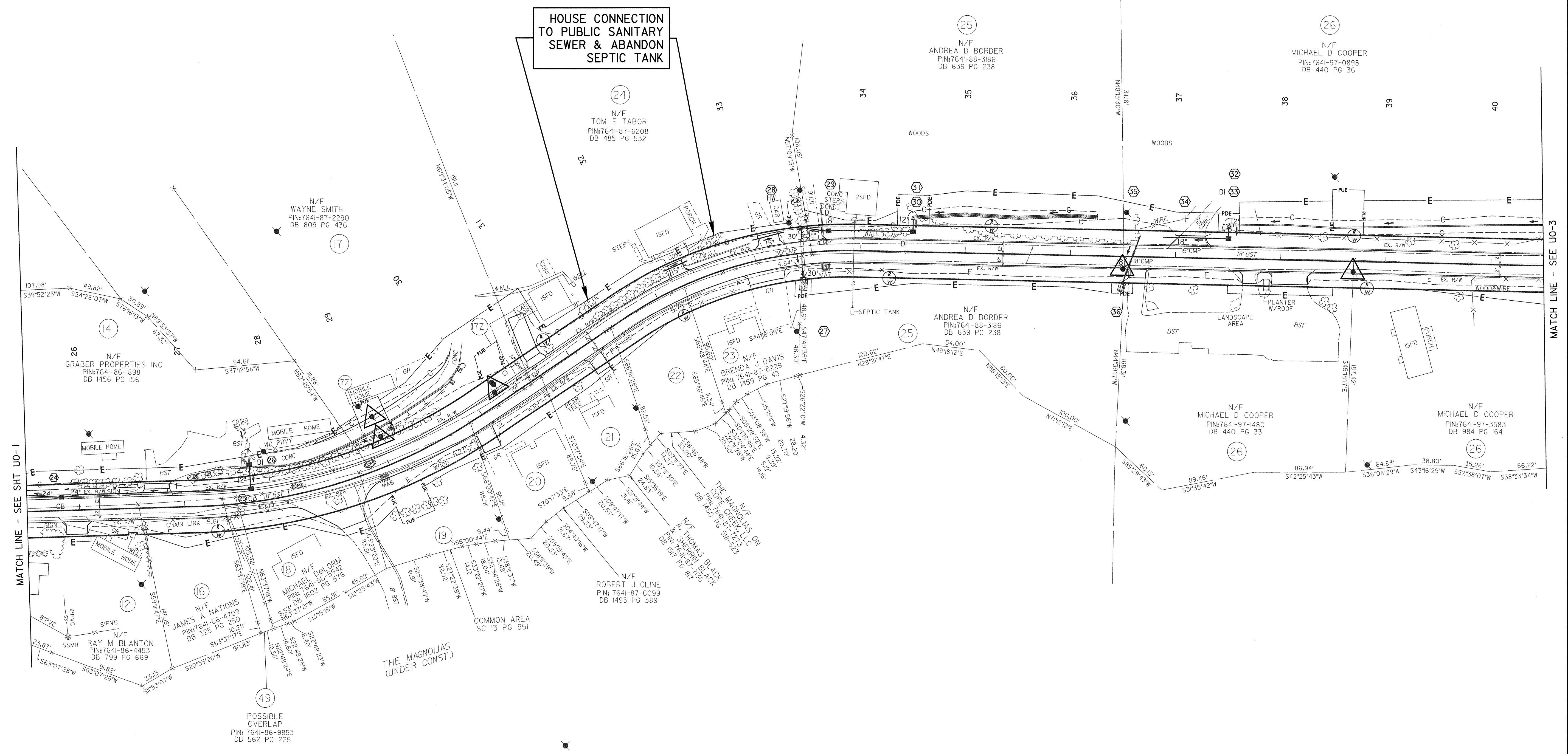
UTILITIES BY OTHERS



PROJECT REFERENCE NO. R-5024		SHEET NO. U0-2	
RW SHEET NO.			
ROADWAY DESIGN ENGINEER		HYDRAULICS ENGINEER	
		4135 MENDENHALL OAKS PKWY SUITE 160 HIGH POINT, N. C. 27265	

ALL PROPOSED UTILITY WORK
SHOWN ON THIS SHEET
WILL BE DONE BY OTHERS

UTILITY POLE
RELOCATION

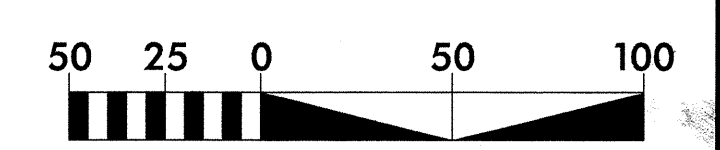


REVISIONS

MATCH LINE - SEE SHT U0-1

MATCH LINE - SEE U0-3

UTILITIES BY OTHERS



FILE: R:\PROJECTS\6024\DWG\U0-2.dwg
DATE: 7/2/2009 3:46:49 PM

PROJECT REFERENCE NO. R-5024		SHEET NO. U0-3	
RW SHEET NO.			
ROADWAY DESIGN ENGINEER		HYDRAULICS ENGINEER	
		7-23-08	
WILBUR SMITH ASSOCIATES		4135 MENDENHALL OAKS PKWY SUITE 160 HIGH POINT, N. C. 27265	

ALL PROPOSED UTILITY WORK
SHOWN ON THIS SHEET
WILL BE DONE BY OTHERS

UTILITY POLE RELOCATION

(35)
N/F
THE LEC LIMITED
PARTNERSHIP
PIN:7651-09-1668
DB 1596 PG 316-317

(36)
N/F
JOANNE C BRADLEY
PIN:7651-08-5469
DB 638 PG 349

(31)
N/F
JANET WHISNANT &
RICHARD P WHISNANT
PIN:7651-08-0178
DB 1220 PG 0415

(32)
N/F
FREDA H OLEEN
PIN:7641-98-6498
DB 094E PG 0226
(NO CLAIM)

(31)
N/F
JANET WHISNANT &
RICHARD P WHISNANT
PIN:7651-08-0178
DB 1220 PG 0415

(29)
N/F
JAMES A SHULER
PIN:7641-98-2445
DB 984 PG 57

(26)
N/F
MICHAEL D COOPER
PIN:7641-97-0898
DB 440 PG 36

(26)
N/F
MICHAEL D COOPER
PIN:7641-97-3593
DB 984 PG 164

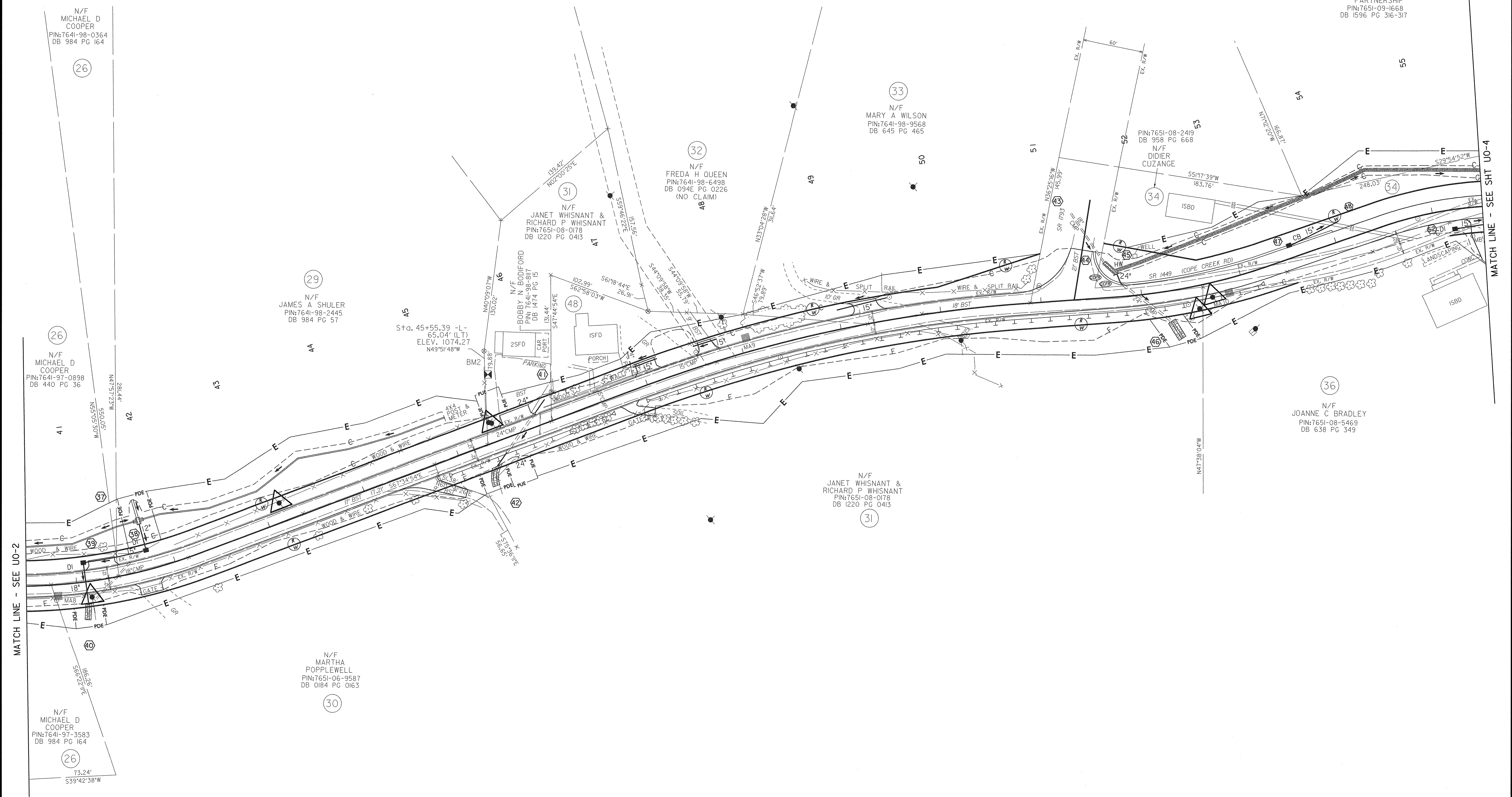
(30)
N/F
MARTHA POPPLEWELL
PIN:7651-06-9587
DB 0184 PG 0163

UTILITIES BY OTHERS



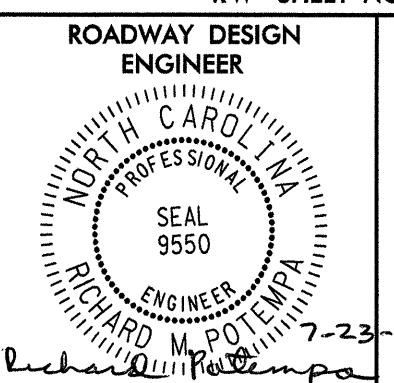
REVISIONS

FILE: R:\NCDOT\85024\Roadway\Plan\85024_U0-3.dwg
DATE: 7/2/2008 3:47:30 PM



MATCH LINE - SEE U0-2

MATCH LINE - SEE SHT U0-4

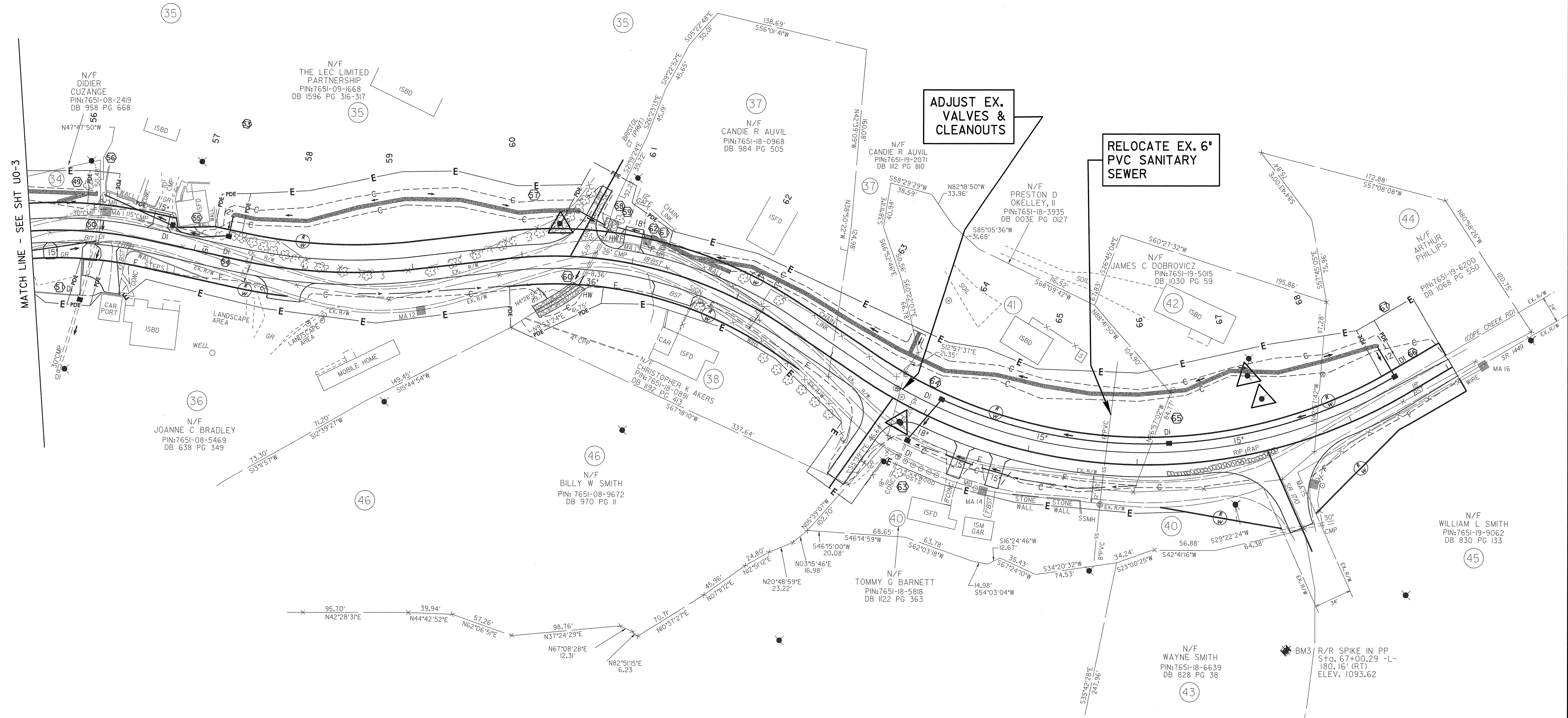
PROJECT REFERENCE NO. R-5024	SHEET NO. UO-4
RW SHEET NO.	
ROADWAY DESIGN ENGINEER 	HYDRAULICS ENGINEER
4135 MENDENHALL OAKS PKWY SUITE 160 HIGH POINT, N. C. 27265	

ALL PROPOSED UTILITY WORK
SHOWN ON THIS SHEET
WILL BE DONE BY OTHERS

 UTILITY POLE
RELOCATION

ADJUST EX.
VALVES &
CLEANOUTS

RELOCATE EX. 6"
PVC SANITARY
SEWER



MATCH LINE - SEE SHT UO-3

REVISIONS

UTILITIES BY OTHERS



FILE: R:\PROJECTS\5024\Roadway\Plan\5024_Rb_UO-4.dwg
DATE: 7/2/2009 3:48:02 PM