

**TIP PROJECT: U-4428**

STATE OF NORTH CAROLINA  
DIVISION OF HIGHWAYS  
PLAN FOR PROPOSED  
HIGHWAY EROSION CONTROL

**HENDERSON COUNTY**

**LOCATION: US 64 (6TH AVENUE) FROM BLYTHE STREET TO BUNCOMBE STREET**

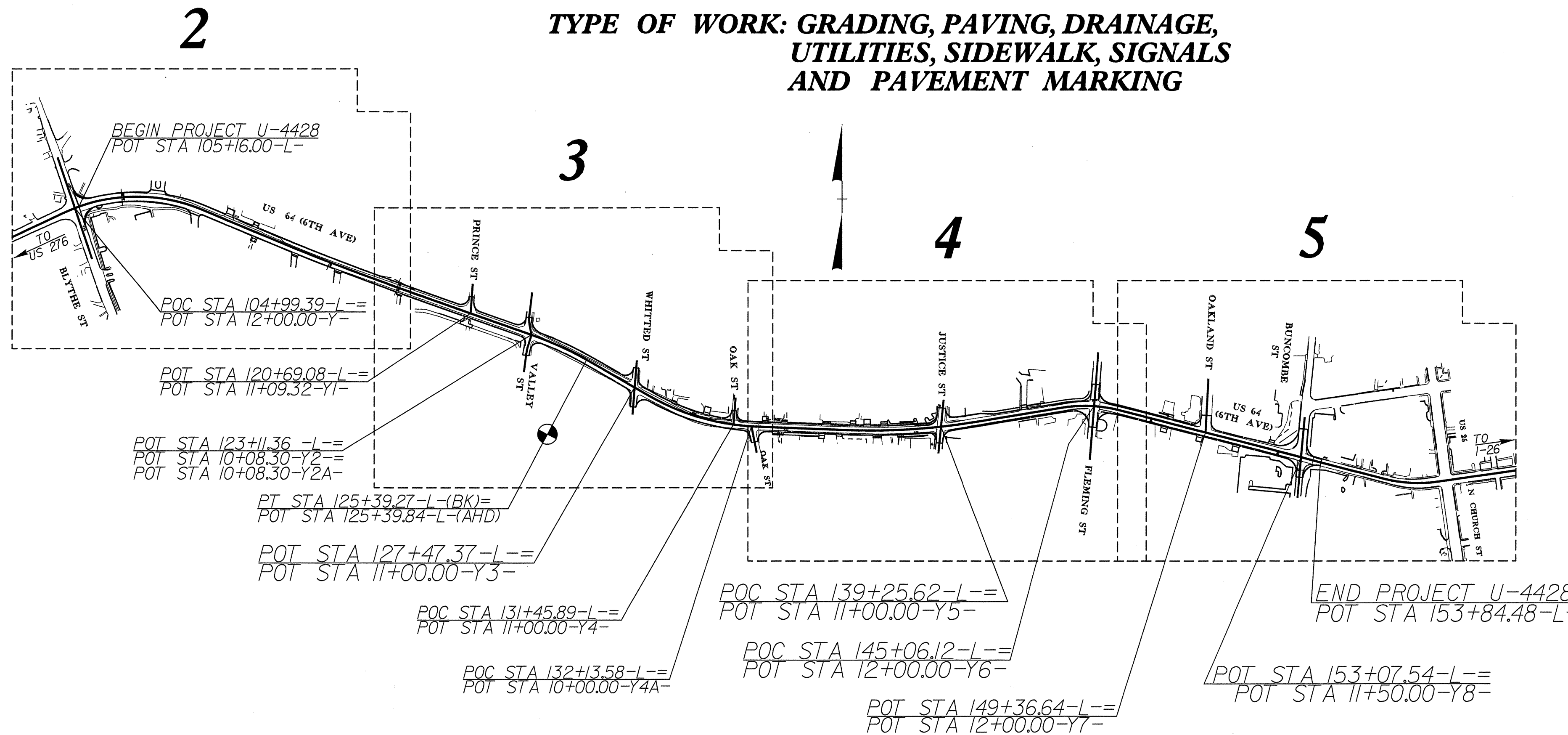
**TYPE OF WORK: GRADING, PAVING, DRAINAGE, UTILITIES, SIDEWALK, SIGNALS AND PAVEMENT MARKING**

NOTES: ANY DEVIATION FROM DESIGN SHOWN WILL REQUIRE PRIOR APPROVAL BY ENGINEER.  
  
ADDITIONAL EROSION CONTROL DEVICES MAY NEED TO BE INSTALLED AS DIRECTED BY THE ENGINEER.

STATE	STATE PROJECT REFERENCE NO.	SHEET NO.	TOTAL SHEETS
N.C.	U-4428	EC-1	
STATE PROJ. NO.	F.A. PROJ. NO.	DESCRIPTION	
35025.1.1		P.E.	
35025.3.1		R/W	
35025.2.2		CONST	

**EROSION AND SEDIMENT CONTROL MEASURES**

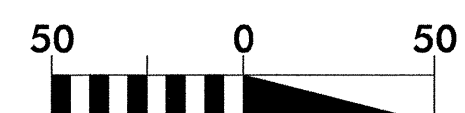
Std. #	Description	Symbol
	Streambank Reforestation.....	
1650.05	Temporary Silt Ditch.....	
1650.05	Temporary Diversion.....	
1605.01	Temporary Silt Fence.....	
1606.01	Special Sediment Control Fence.....	
1622.01	Temporary Berms and Slope Drains.....	
1650.01	Riser Basin.....	
	Silt Basin Type B.....	
1633.01	Temporary Rock Silt Check Type-A.....	
	Temporary Rock Silt Check Type-B.....	
1634.01	Temporary Rock Sediment Dam Type-A.....	
1634.02	Temporary Rock Sediment Dam Type-B.....	
1635.01	Rock Pipe Inlet Sediment Trap Type-A.....	
1635.02	Rock Pipe Inlet Sediment Trap Type-B.....	
1630.04	Stilling Basin.....	
	Rock Inlet Sediment Trap:	
1632.01	Type A.....	
1632.02	Type B.....	
1632.03	Type C.....	
	Skimmer Basin.....	
	Tiered Skimmer Basin.....	



**DISTURBED AREA**  
249022 SF = 5.72 AC

NOTE: PERIMETER EROSION CONTROL MEASURES SHALL BE INSTALLED PRIOR TO CLEARING AND GRUBBING.

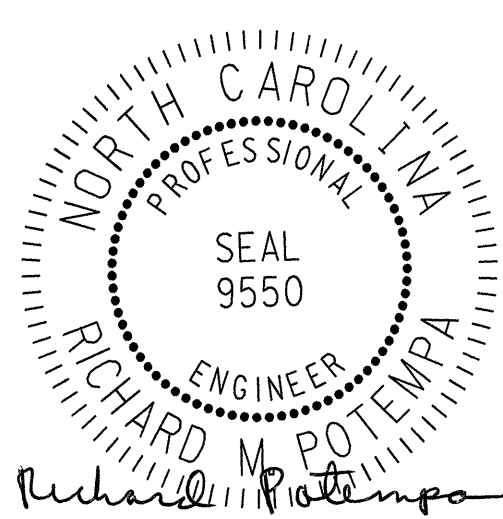
**GRAPHIC SCALE**



PLANS

ROADSIDE ENVIRONMENTAL UNIT  
DIVISION OF HIGHWAYS  
STATE OF NORTH CAROLINA

DESIGN  
ENGINEER



SIGNATURE: *Richard M. Potempa*  
6-12-08 P.E.

PLANS REVIEWED AND  
APPROVED BY TRE DUGAL  
WILBUR SMITH ASSOC.  
LEVEL IIIA CERT. NO 350

Prepared In the Office of:  
**WILBUR SMITH ASSOCIATES**  
4135 Mendenhall Oaks Pkwy, Suite 160, High Point, NC 27265

**2006 STANDARD SPECIFICATIONS**

**Roadway Standard Drawings**

The following roadway English standards as appear in "Roadway Standard Drawings"- Roadway Design Unit - N. C. Department of Transportation - Raleigh, N. C., dated July 18, 2006 and the latest revision thereto are applicable to this project and by reference hereby are considered a part of these plans.

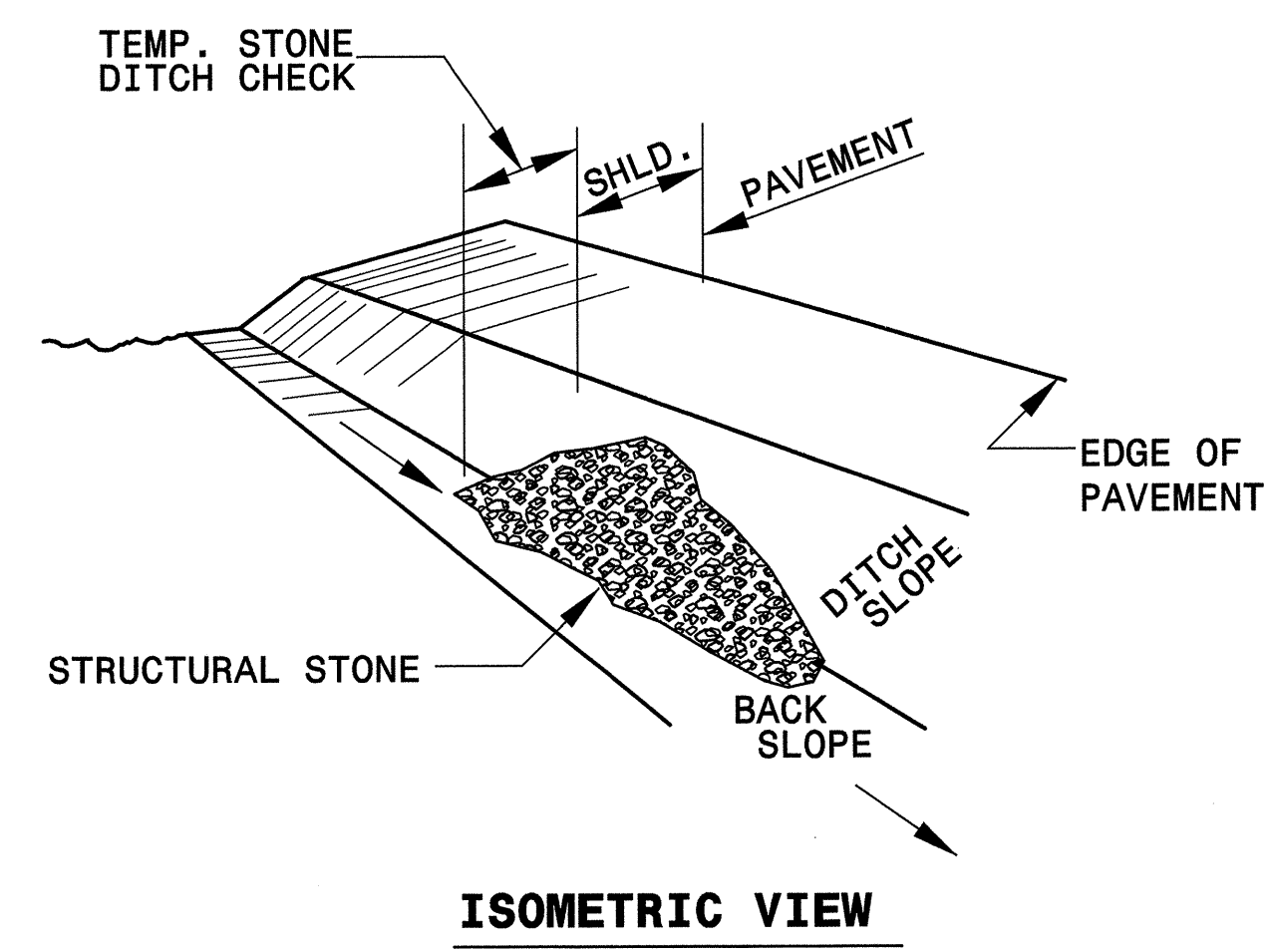
- |  |  |
|--|--|
| 1605.01 Temporary Silt Fence           | 1632.03 Rock Inlet Sediment Trap Type C    |
| 1606.01 Special Sediment Control Fence | 1634.02 Temporary Rock Sediment Dam Type B |
| 1607.01 Gravel Construction Entrance   |  |
| 1630.05 Temporary Diversion            |  |

PROJECT REFERENCE NO. U-4428	SHEET NO. EC-1A
RW SHEET NO.	
ROADWAY DESIGN ENGINEER	HYDRAULICS ENGINEER
WILBUR SMITH ASSOCIATES 4135 MENDENHALL OAKS PKWY SUITE 150 HIGH POINT, N. C. 27265	

## TEMPORARY ROCK SILT CHECK TYPE 'B' DETAIL

## TEMPORARY SILT BASIN TYPE 'B' DETAIL

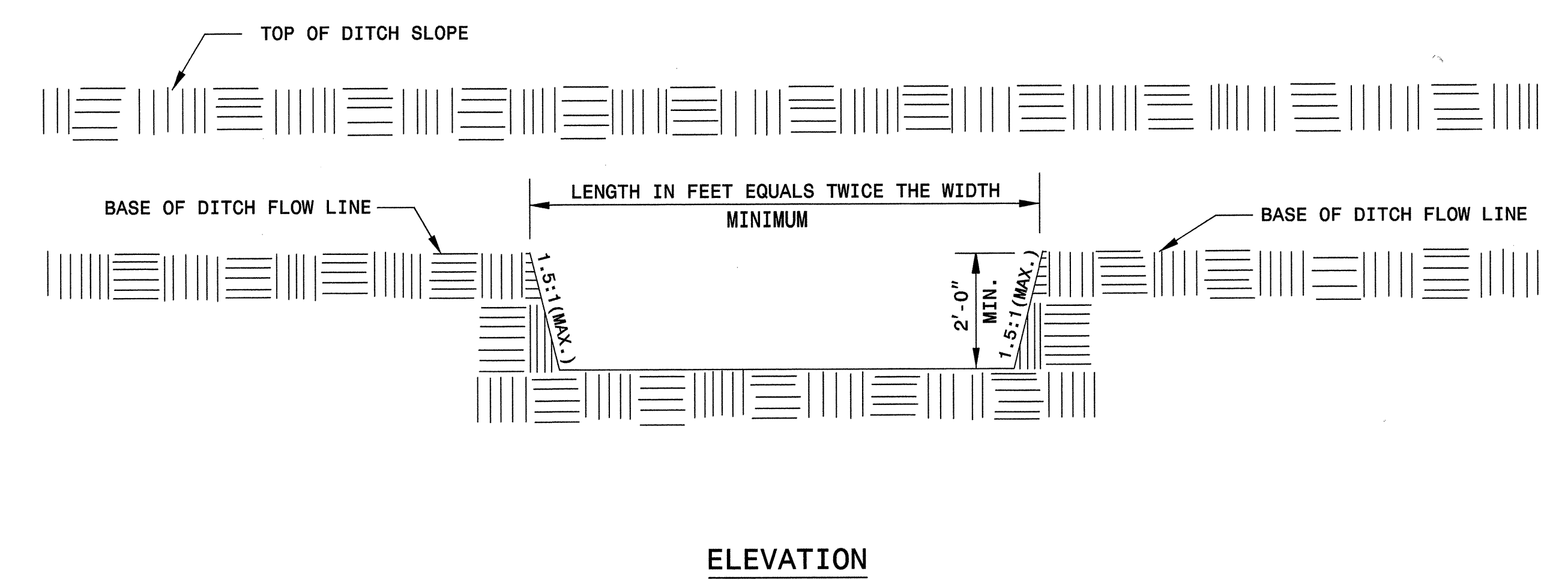
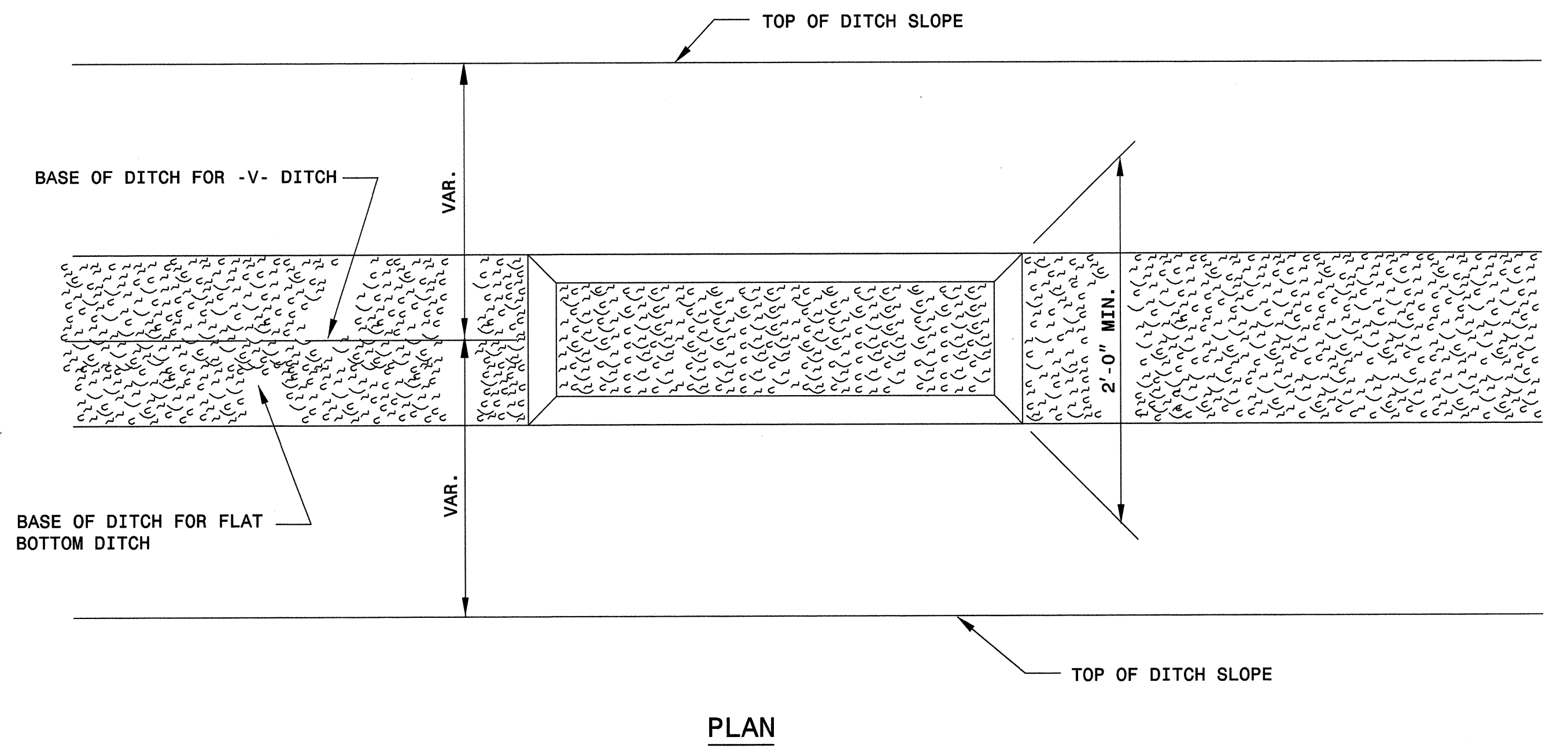
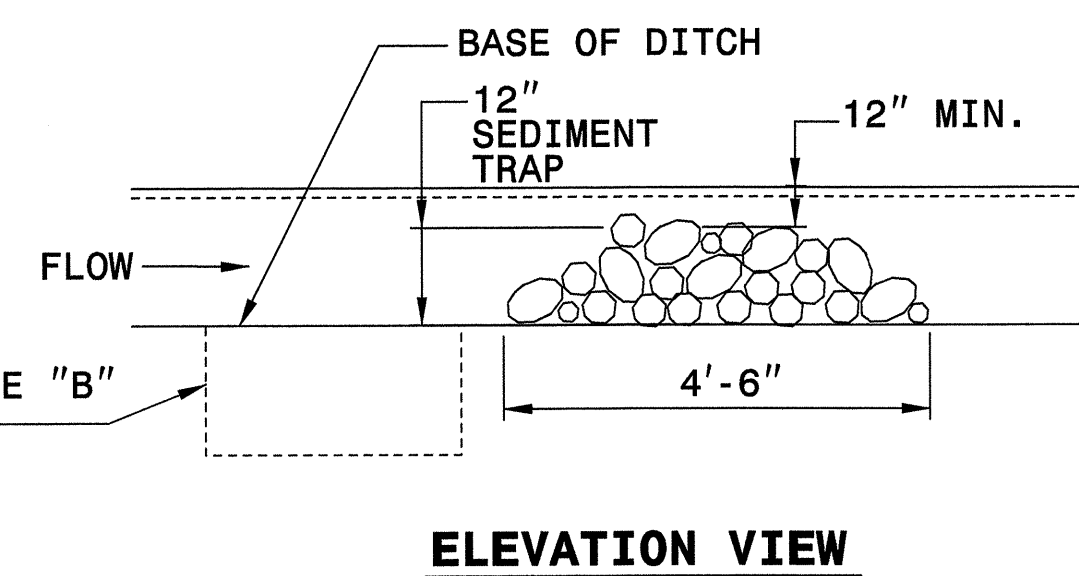
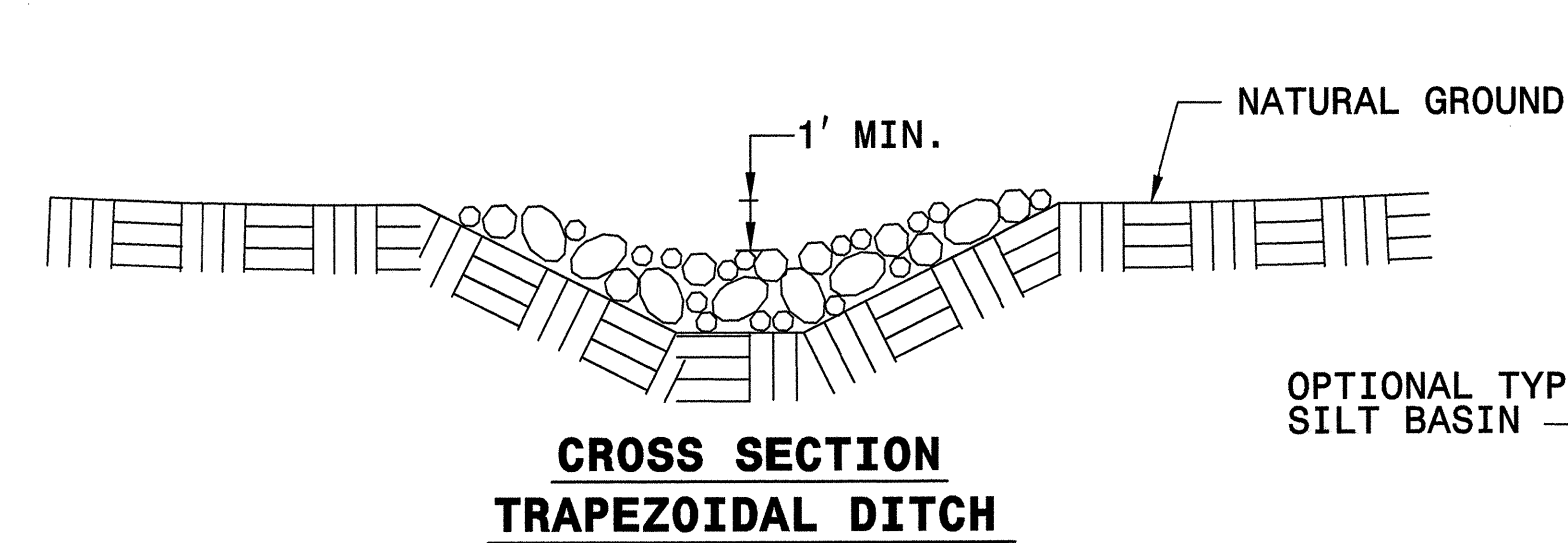
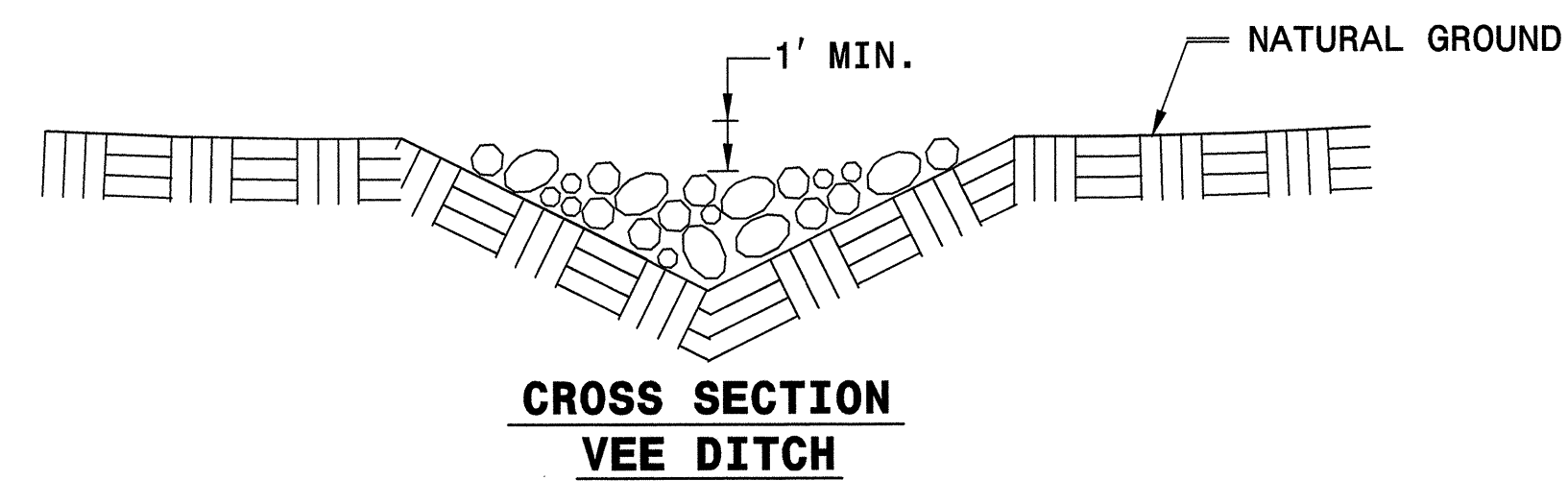
REVISIONS



**NOTES:**

USE CLASS 'B' EROSION CONTROL STONE FOR STRUCTURAL STONE.

THE ENGINEER MAY DIRECT THE OPTION OF CLASS "A" STONE FOR SITES HAVING LESS THAN ONE (1) ACRE DRAINAGE AREA AND A DITCH GRADE LESS THAN 3%.



## EROSION CONTROL PLAN

FILE: R:\INCDDT\14428\Roadway\Func\New\_AL\_PSE\14428\_bdy\_wct.dgn  
DATE: 7/2/2008 9:48:22 AM

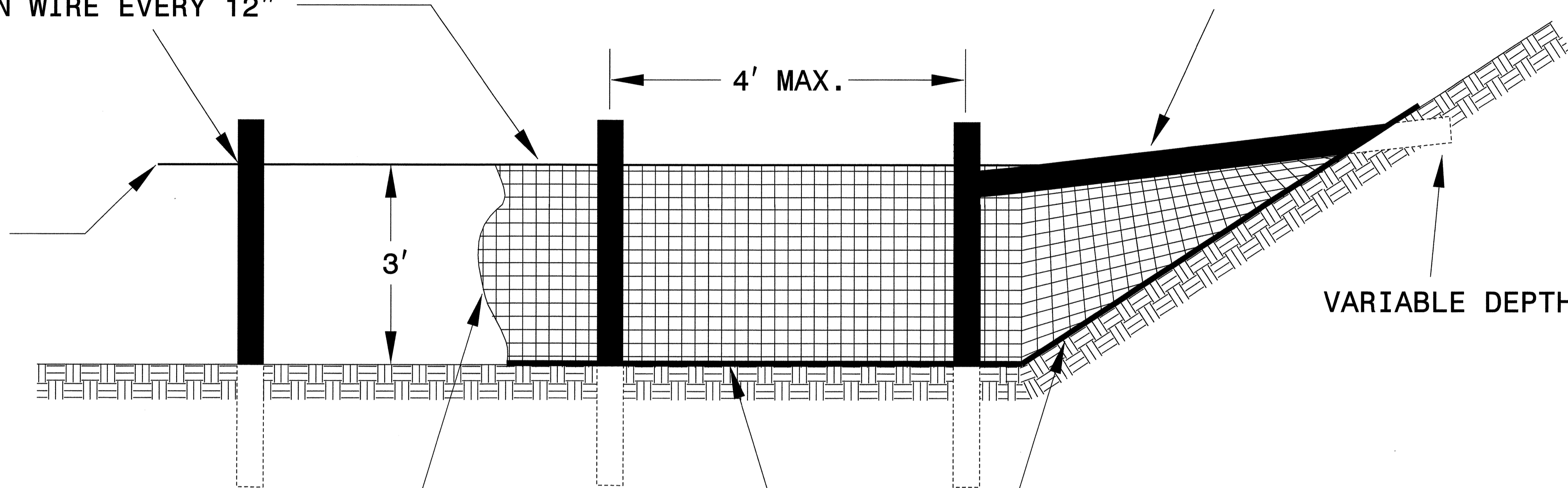
# COIR FIBER BAFFLE DETAIL

PROJECT REFERENCE NO. U-4428	SHEET NO. EC-1B
RW SHEET NO.	
ROADWAY DESIGN ENGINEER	HYDRAULICS ENGINEER
WILBUR SMITH ASSOCIATES 4135 MENDENHALL OAKS PKWY SUITE 160 HIGH POINT, N. C. 27265	

DRAPe BAFFLE MATERIAL OVER WIRE STRAND AND SECURE WITH PLASTIC TIES AT POSTS AND ON WIRE EVERY 12"

INSTALL T-POST TO ANCHOR BAFFLE TO SIDE OF BASIN AND SECURE TO VERTICAL POST

8 GAUGE MIN WIRE STRAND SHALL BE SECURED TO POST TO SUPPORT BAFFLE MATERIAL



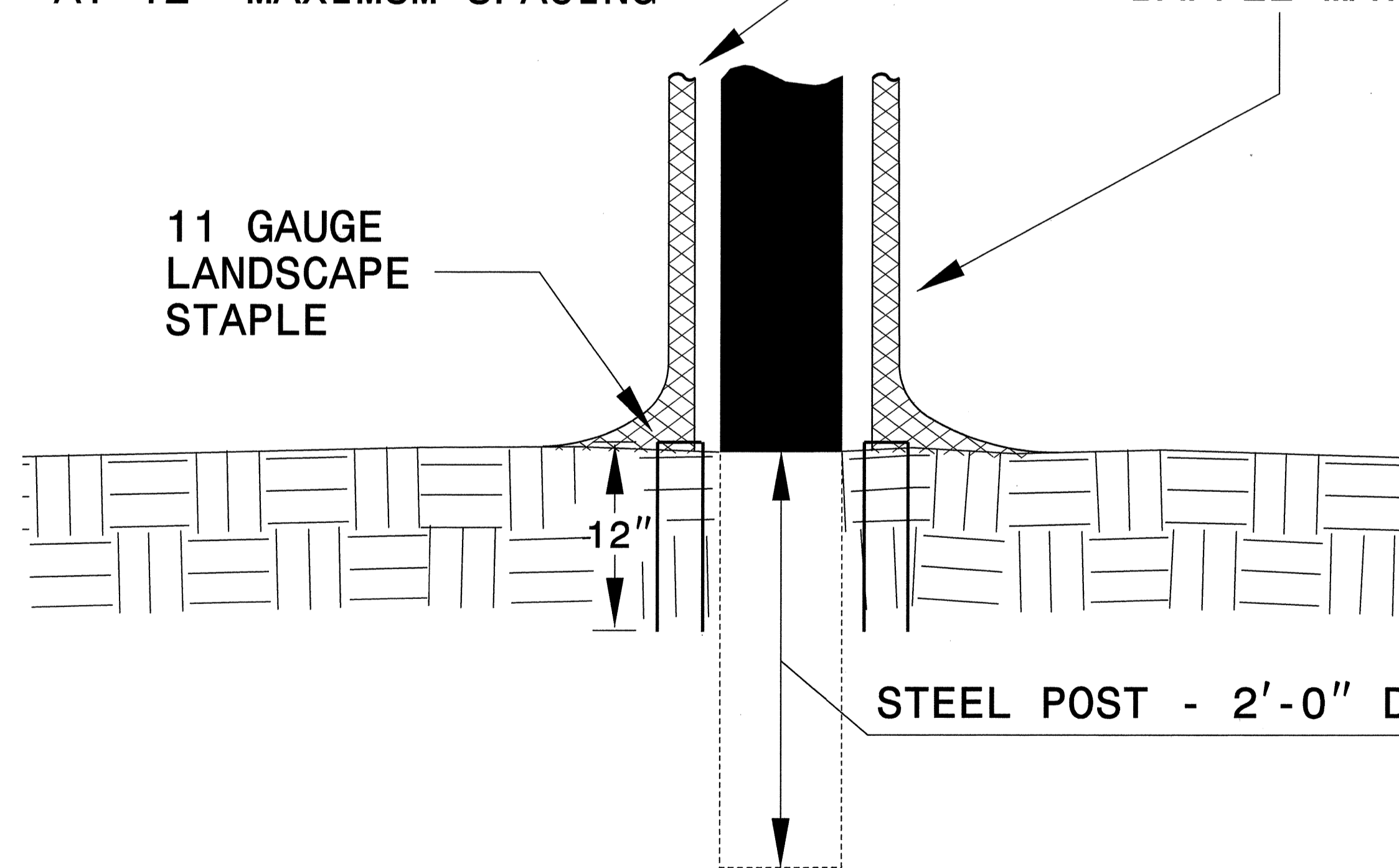
BAFFLE MATERIAL

SECURE BOTTOM OF BAFFLE TO GROUND WITH 12" STAPLES AT 12" MAXIMUM SPACING

VARIABLE DEPTH

BAFFLE MATERIAL

11 GAUGE LANDSCAPE STAPLE



STEEL POST - 2'-0" DEPTH

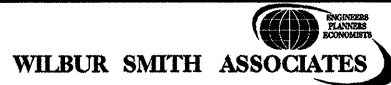
NOTE: INSTALL THREE(3) COIR FIBER BAFFLES IN SILT BASINS AND SEDIMENT DAMS AT DRAINAGE OUTLETS WITH A SPACING OF 1/4 THE BASIN LENGTH. TWO(2) COIR FIBER BAFFLES CAN BE INSTALLED IN SILT BASINS LESS THAN 20 FT. IN LENGTH WITH A SPACING OF 1/3 THE BASIN LENGTH.

BAFFLE MATERIAL SHALL BE SECURED TO THE BOTTOM AND SIDES OF BASIN USING 12" LANDSCAPE STAPLES

EROSION CONTROL PLAN

REVISIONS

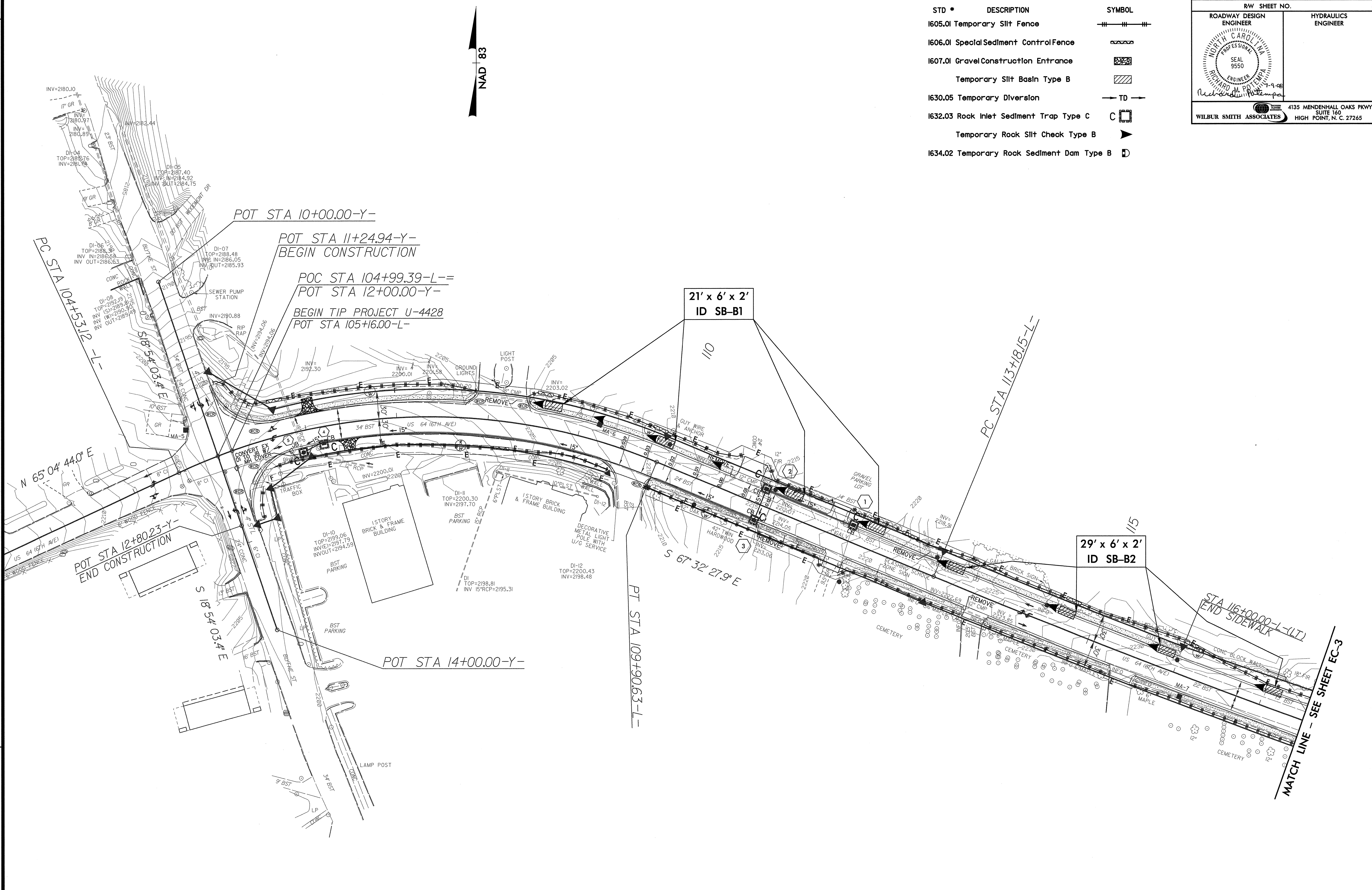
FILE: r:\NCDOT\U4428\roadway\Plan\New\_All\_PSE\U4428\_Rd\_12-12-08.dgn  
DATE: 01/28/09 10:38:27 AM

PROJECT REFERENCE NO. U-4428	SHEET NO. EC-2
R/W SHEET NO.	
ROADWAY DESIGN ENGINEER NORTH CAROLINA PROFESSIONAL SEAL 9550 RICHARD M. PATTERSON 1-9-06	HYDRAULICS ENGINEER
 4135 MENDENHALL OAKS PKWY SUITE 160 HIGH POINT, N. C. 27265	

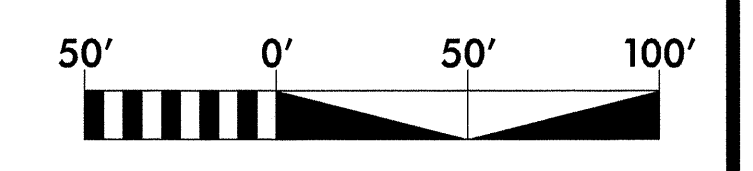
### EROSION & SEDIMENT CONTROL LEGEND

STD #	DESCRIPTION	SYMBOL
1605.01	Temporary Silt Fence	
1606.01	Special Sediment Control Fence	▨
1607.01	Gravel Construction Entrance	▩
	Temporary Silt Basin Type B	▧
1630.05	Temporary Diversion	→ TD →
1632.03	Rock Inlet Sediment Trap Type C	C
	Temporary Rock Silt Check Type B	▶
1634.02	Temporary Rock Sediment Dam Type B	D

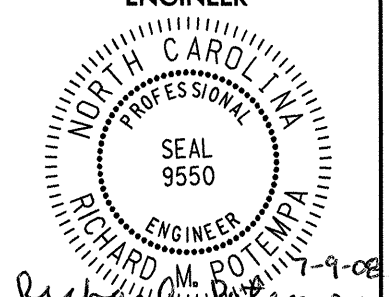
REVISIONS



# EROSION CONTROL PLAN

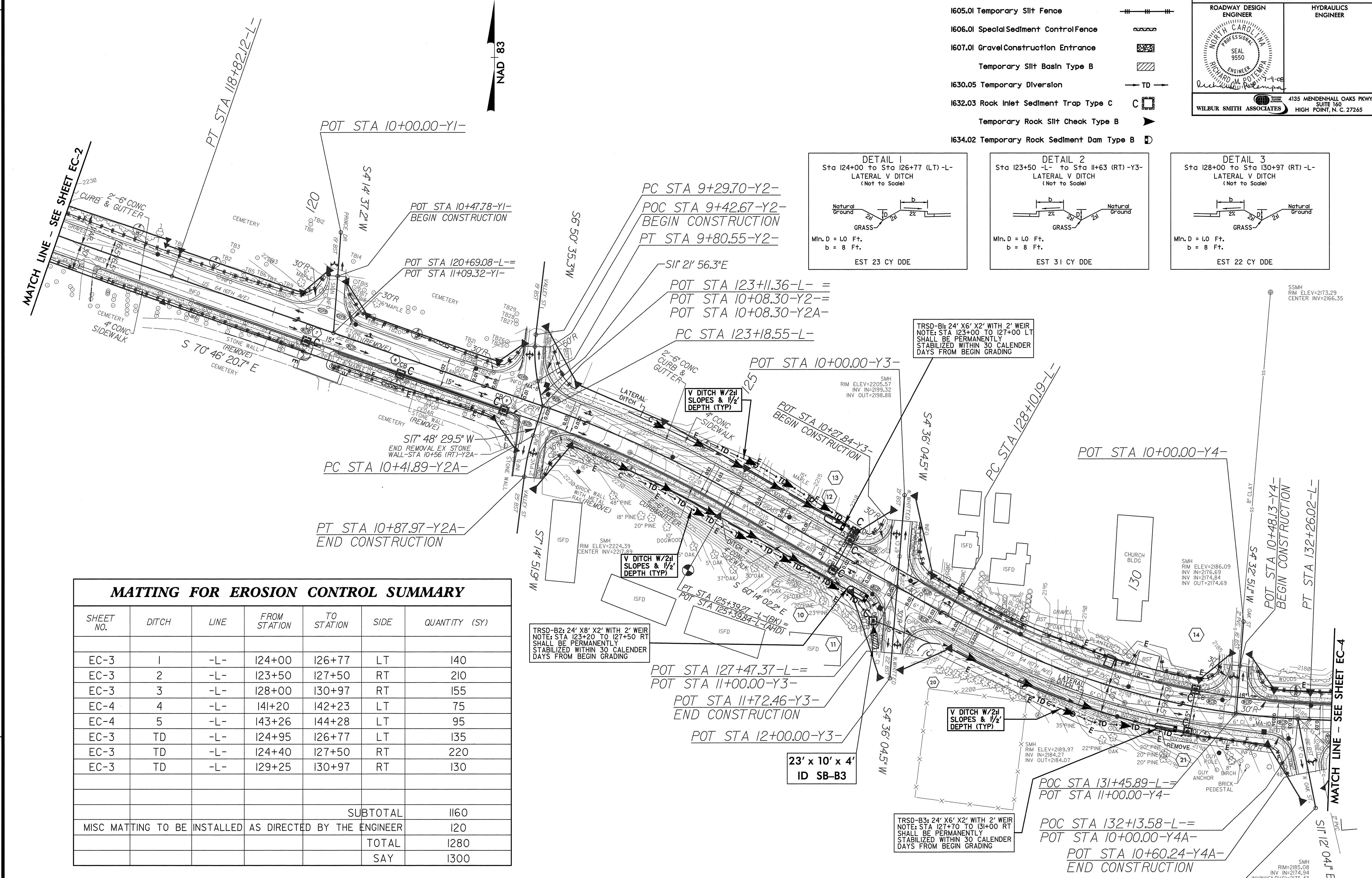
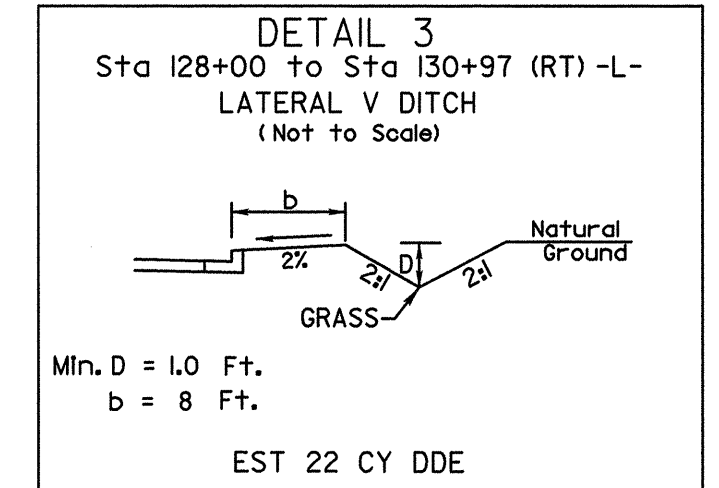
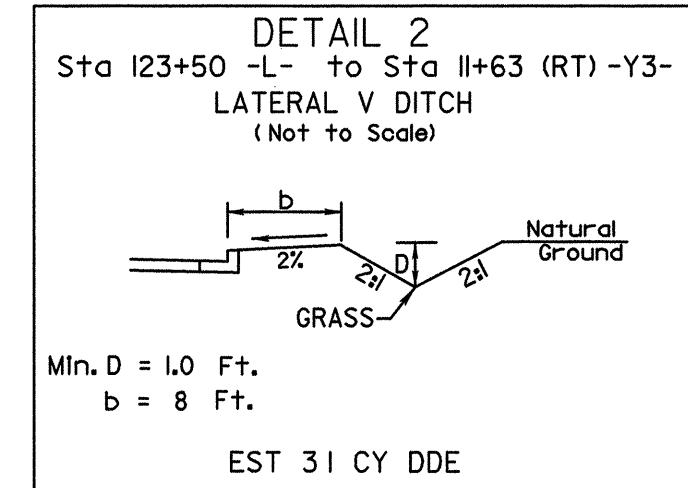
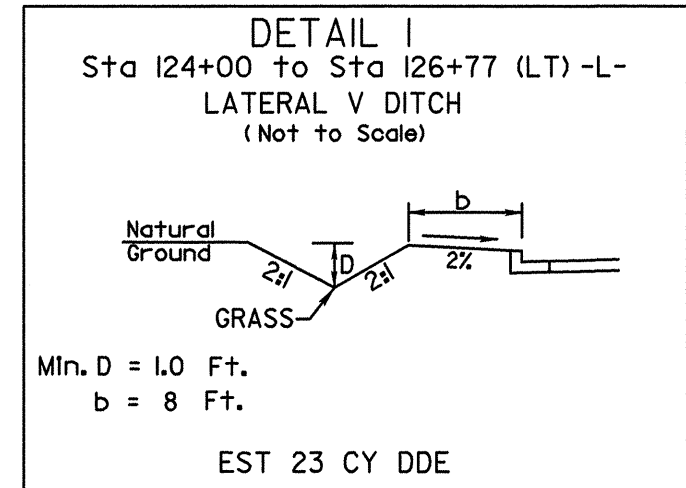


FILE: R:\INCDOT\U4428\Roadway\Plan\New\_Alt\_PSE\U4428\_R01.ec2.dgn  
 DATE: 7/2/2008 10:28:47 AM

PROJECT REFERENCE NO.		SHEET NO.	
U-4428		EC-3	
RW SHEET NO.			
ROADWAY DESIGN ENGINEER		HYDRAULICS ENGINEER	
 RICHARD M. POTEMPA ENGINEER License No. 9550 State of North Carolina		4135 MENDENHALL OAKS PKWY SUITE 160 HIGH POINT, N. C. 27265 WILBUR SMITH ASSOCIATES	

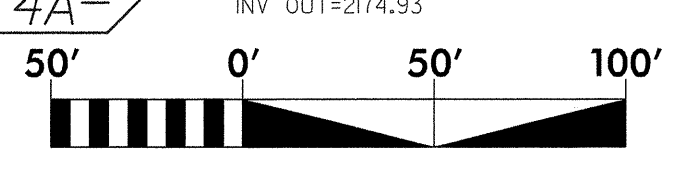
### EROSION & SEDIMENT CONTROL LEGEND

STD *	DESCRIPTION	SYMBOL
1605.01	Temporary Silt Fence	— — — —
1606.01	Special Sediment Control Fence	—X—X—X—X—
1607.01	Gravel Construction Entrance	▨
	Temporary Silt Basin Type B	▨
1630.05	Temporary Diversion	→ TD →
1632.03	Rock Inlet Sediment Trap Type C	C
	Temporary Rock Silt Check Type B	▶
1634.02	Temporary Rock Sediment Dam Type B	D



MATTING FOR EROSION CONTROL SUMMARY						
SHEET NO.	DITCH	LINE	FROM STATION	TO STATION	SIDE	QUANTITY (SY)
EC-3	1	-L-	124+00	126+77	LT	140
EC-3	2	-L-	123+50	127+50	RT	210
EC-3	3	-L-	128+00	130+97	RT	155
EC-4	4	-L-	141+20	142+23	LT	75
EC-4	5	-L-	143+26	144+28	LT	95
EC-3	TD	-L-	124+95	126+77	LT	135
EC-3	TD	-L-	124+40	127+50	RT	220
EC-3	TD	-L-	129+25	130+97	RT	130
SUBTOTAL						1160
MISC MATTING TO BE INSTALLED AS DIRECTED BY THE ENGINEER						120
TOTAL						1280
SAY						1300

# EROSION CONTROL PLAN

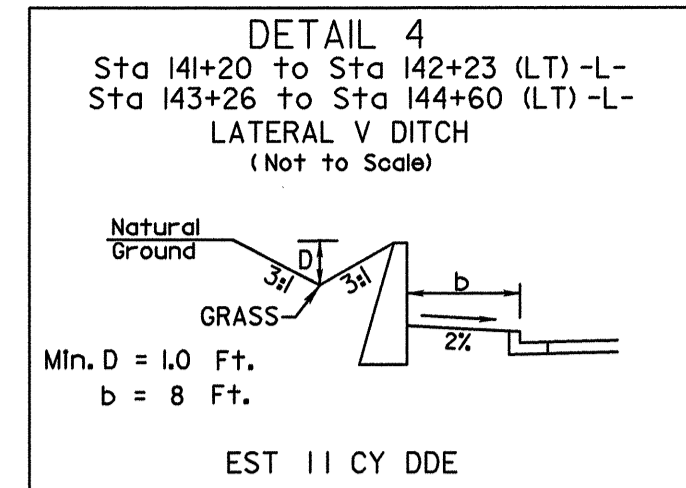


REVISIONS  
 FILE: R:\NCDDOT\U4428\Roadway\Func\New\_Alt\_PSE\U4428\_Rdy.nc3.dgn  
 DATE: 7/2/2008 10:25:50 AM

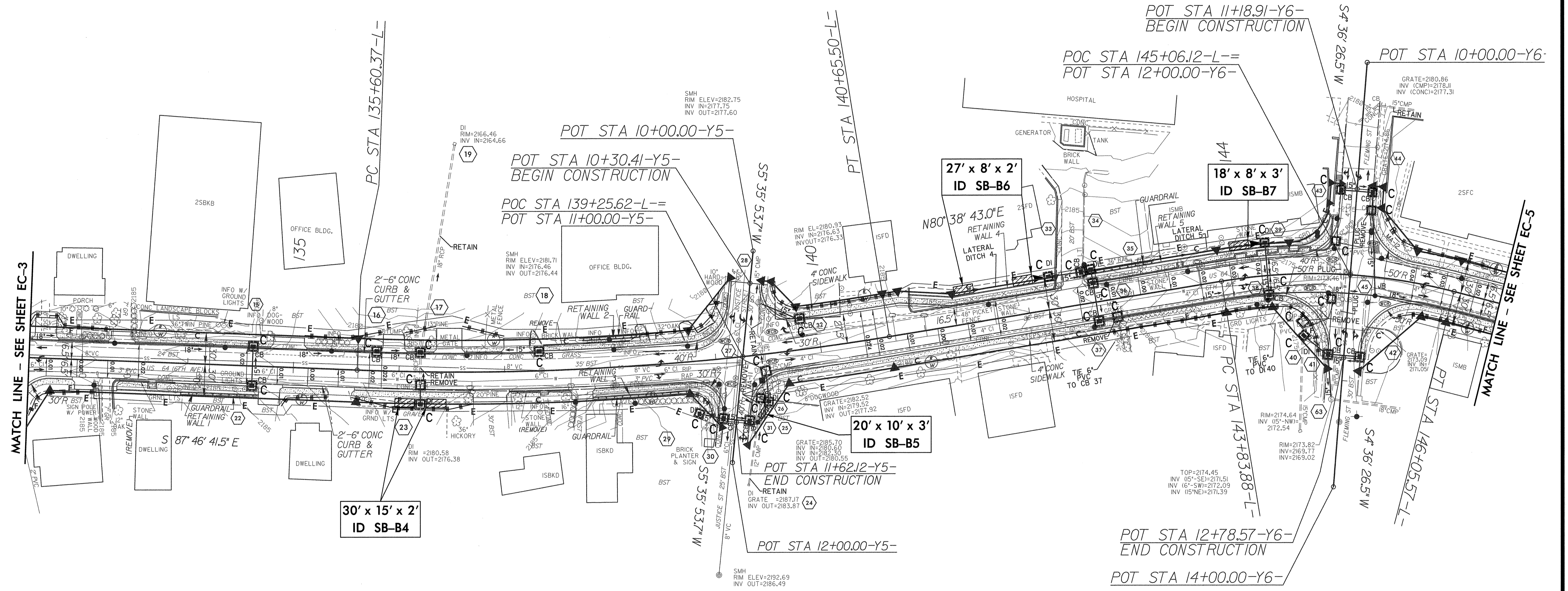
PROJECT REFERENCE NO. U-4428	SHEET NO. EC-4
RW SHEET NO.	
ROADWAY DESIGN ENGINEER	HYDRAULICS ENGINEER
4135 MENDENHALL OAKS PKWY SUITE 160 WILBUR SMITH ASSOCIATES HIGH POINT, N. C. 27265	

**EROSION & SEDIMENT CONTROL LEGEND**

STD #	DESCRIPTION	SYMBOL
1605.01	Temporary Silt Fence	
1606.01	Special Sediment Control Fence	
1607.01	Gravel Construction Entrance	
	Temporary Silt Basin Type B	
1630.05	Temporary Diversion	
1632.03	Rock Inlet Sediment Trap Type C	
	Temporary Rock Silt Check Type B	
1634.02	Temporary Rock Sediment Dam Type B	



NAD 83

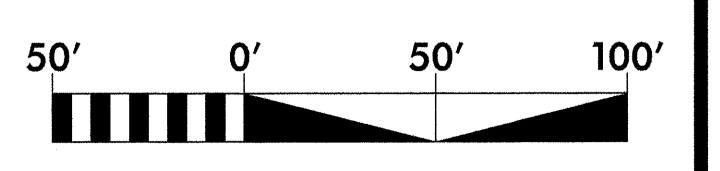


REVISIONS

MATCH LINE - SEE SHEET EC-3

MATCH LINE - SEE SHEET EC-5

**EROSION CONTROL PLAN**



FILE: R:\MCDOT\14428\Roadway\Func\New\_AL\_PSE\14428\_Rdy\_scd.dgn  
 DATE: 7/2/08 10:53:53 AM

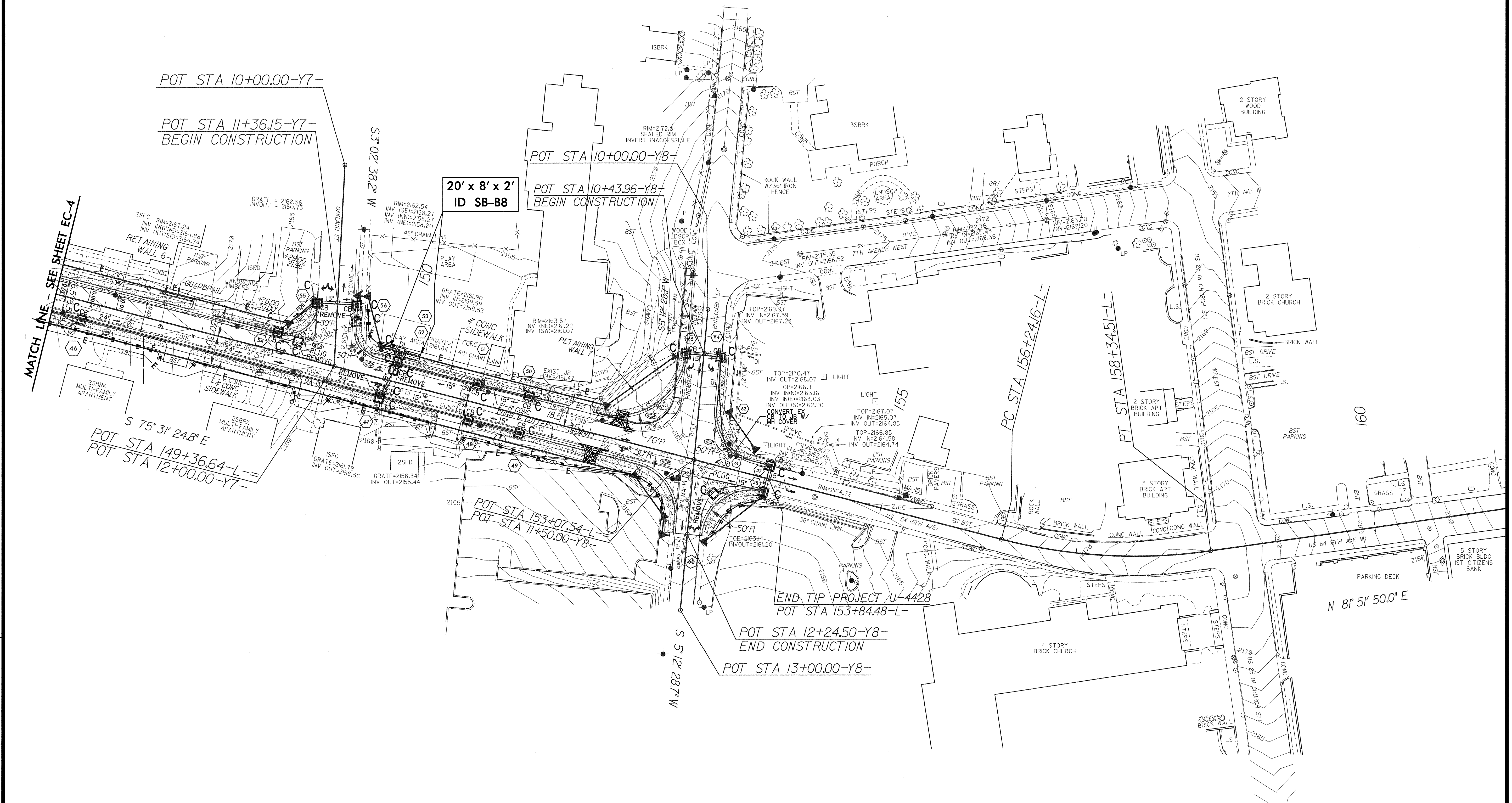
**EROSION & SEDIMENT CONTROL LEGEND**

STD #	DESCRIPTION	SYMBOL
1605.01	Temporary Silt Fence	
1606.01	Special Sediment Control Fence	
1607.01	Gravel Construction Entrance	
	Temporary Silt Basin Type B	
1630.05	Temporary Diversion	
1632.03	Rock Inlet Sediment Trap Type C	
	Temporary Rock Silt Check Type B	
1634.02	Temporary Rock Sediment Dam Type B	

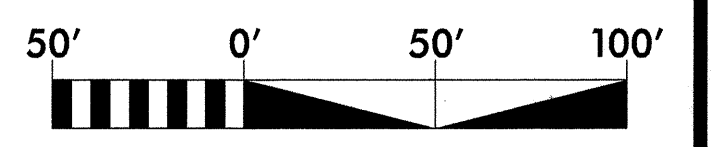
PROJECT REFERENCE NO. U-4428	SHEET NO. EC-5
RW SHEET NO.	
ROADWAY DESIGN ENGINEER	HYDRAULICS ENGINEER
WILBUR SMITH ASSOCIATES 4135 MENDENHALL OAKS PKWY SUITE 160 HIGH POINT, N. C. 27265	



REVISIONS



**EROSION CONTROL PLAN**



FILE: R:\INDOT\U4428\Roadway\Plan\New\_All\_PSE\U4428\_Rd\_pcs.dgn  
DATE: 7/2/08 10:52:14 AM