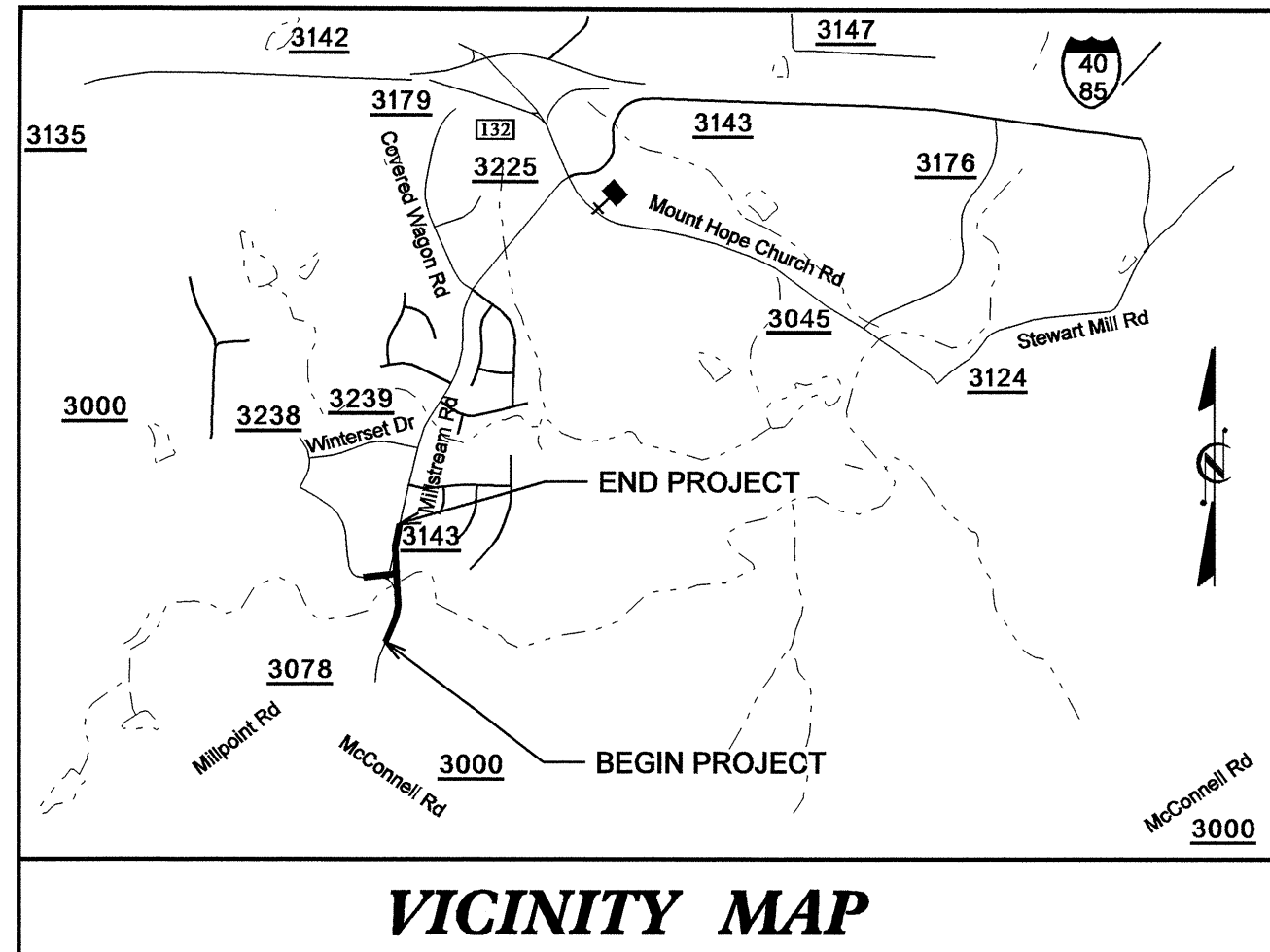


09/08/09

TIP PROJECT: B-4129

T.I.P. NO.	SHEET NO.
B-4129	UO-1



VICINITY MAP

THIS PROJECT IS NOT WITHIN ANY MUNICIPAL BOUNDARY

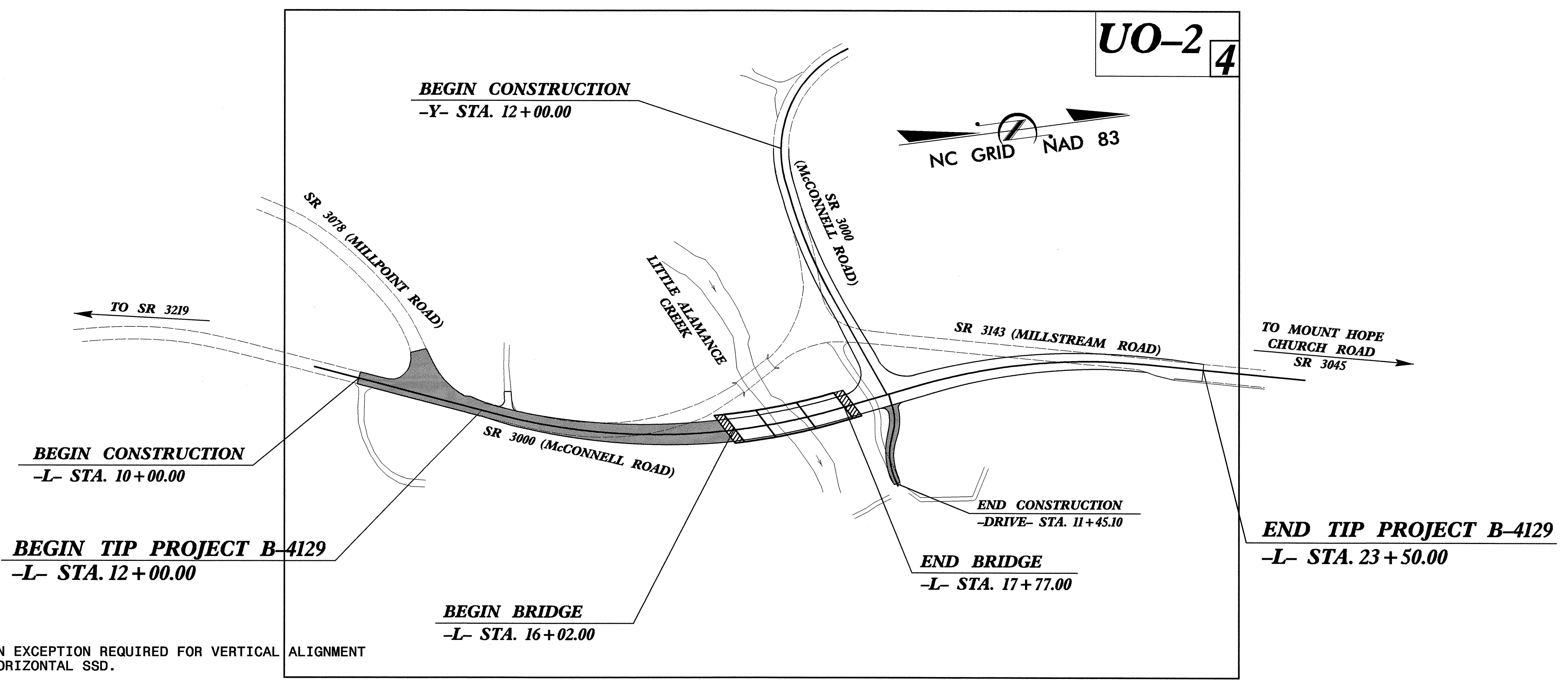
STATE OF NORTH CAROLINA
DIVISION OF HIGHWAYS

**UTILITIES BY OTHERS PLANS
GUILFORD COUNTY**

LOCATION: BRIDGE NO. 226 OVER LITTLE ALAMANCE
CREEK ON SR 3000

TYPE OF WORK: GRADING, DRAINAGE, PAVING & STRUCTURE

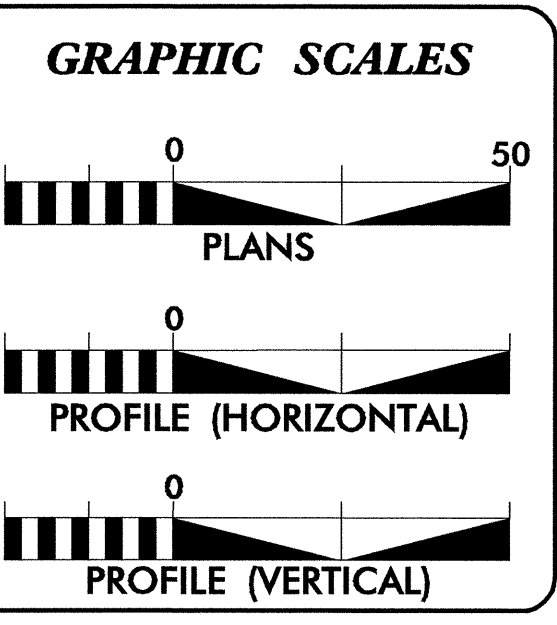
RW PLANS



** DESIGN EXCEPTION REQUIRED FOR VERTICAL ALIGNMENT AND HORIZONTAL SSD.

NCDOT CONTACT: CATHY HOUSER, P.E. ROADWAY DESIGN - ENGINEERING COORDINATION

CLEARING ON THIS PROJECT SHALL BE PERFORMED TO THE LIMITS ESTABLISHED BY METHOD III.



INDEX OF SHEETS

SHEET NO.	DESCRIPTION
UO-1	TITLE SHEET
UO-2	UTILITIES BY OTHERS PLAN SHEETS

UTILITY OWNERS ON PROJECT

- DUKE ENERGY
- AT&T NC
- TIME WARNER CO.

PREPARED IN THE OFFICE OF:
DIVISION OF HIGHWAYS
DESIGN SERVICES
UTILITY SECTION

1591 MAIL SERVICES CENTER
RALEIGH, NC 27699-1591
PHONE (919) 256-4128
FAX (919) 256-4119

Roger Worthington, P.E. UTILITIES SECTION ENGINEER
Steve McKee, P.E. UTILITIES SQUAD LEADER PROJECT ENGINEER
Jamshid Hafshejani UTILITIES PROJECT DESIGNER

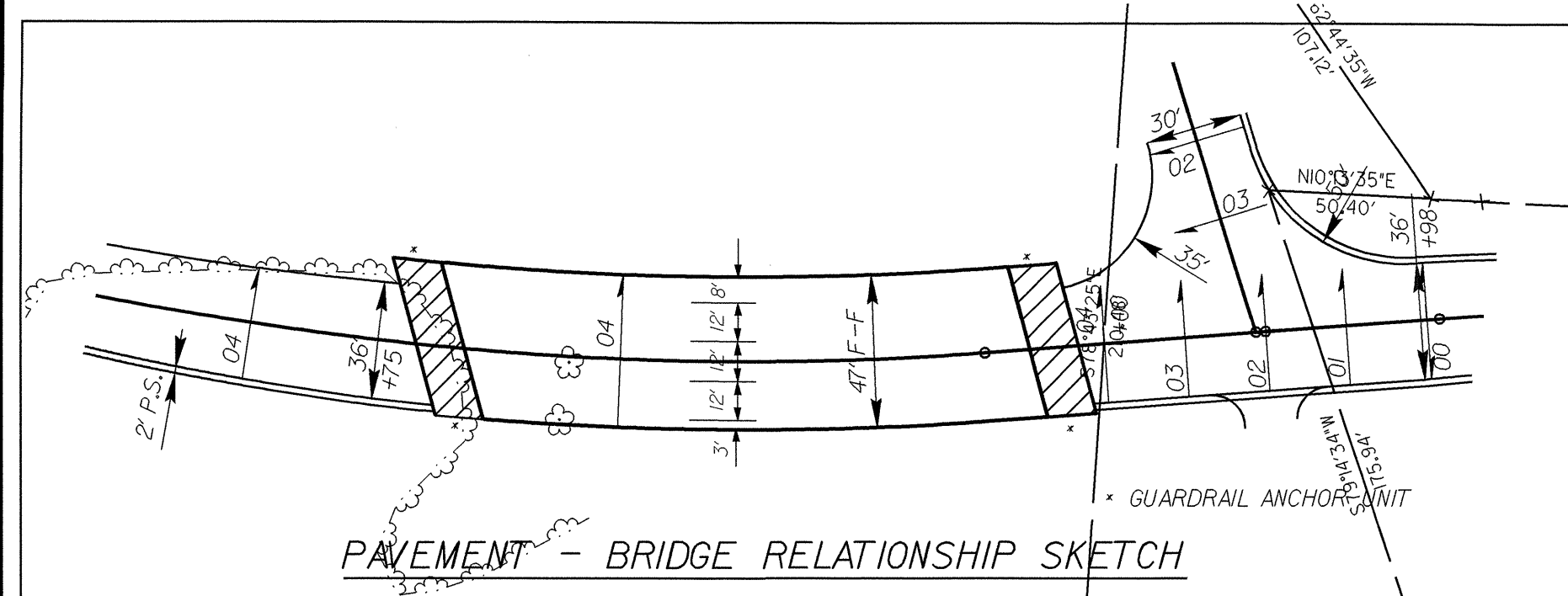
06-NOV-2007 10:56 r:\util\pss\ncdot\proj\p\proj\b-4129_rdy_uot-u0-l-tsh.dgn \$\$\$USERNAME\$\$\$

UTILITIES BY OTHERS

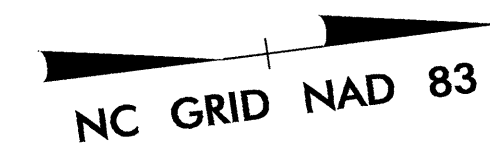
NOTE:
ALL PROPOSED UTILITY WORK
SHOWN ON THIS SHEET WILL
BE DONE BY OTHERS

-Y-
PI Sta 11+57.67
Δ = 79°12'30.6" (LT)
D = 32°44'25.6"
L = 241.93'
T = 144.79'
R = 175.00'

-Y-
PI Sta 13+65.58
Δ = 12°26'58.8" (LT)
D = 7°38'22.0"
L = 162.97'
T = 81.81'
R = 750.00'
SE = 0.040
DS = 45 MPH



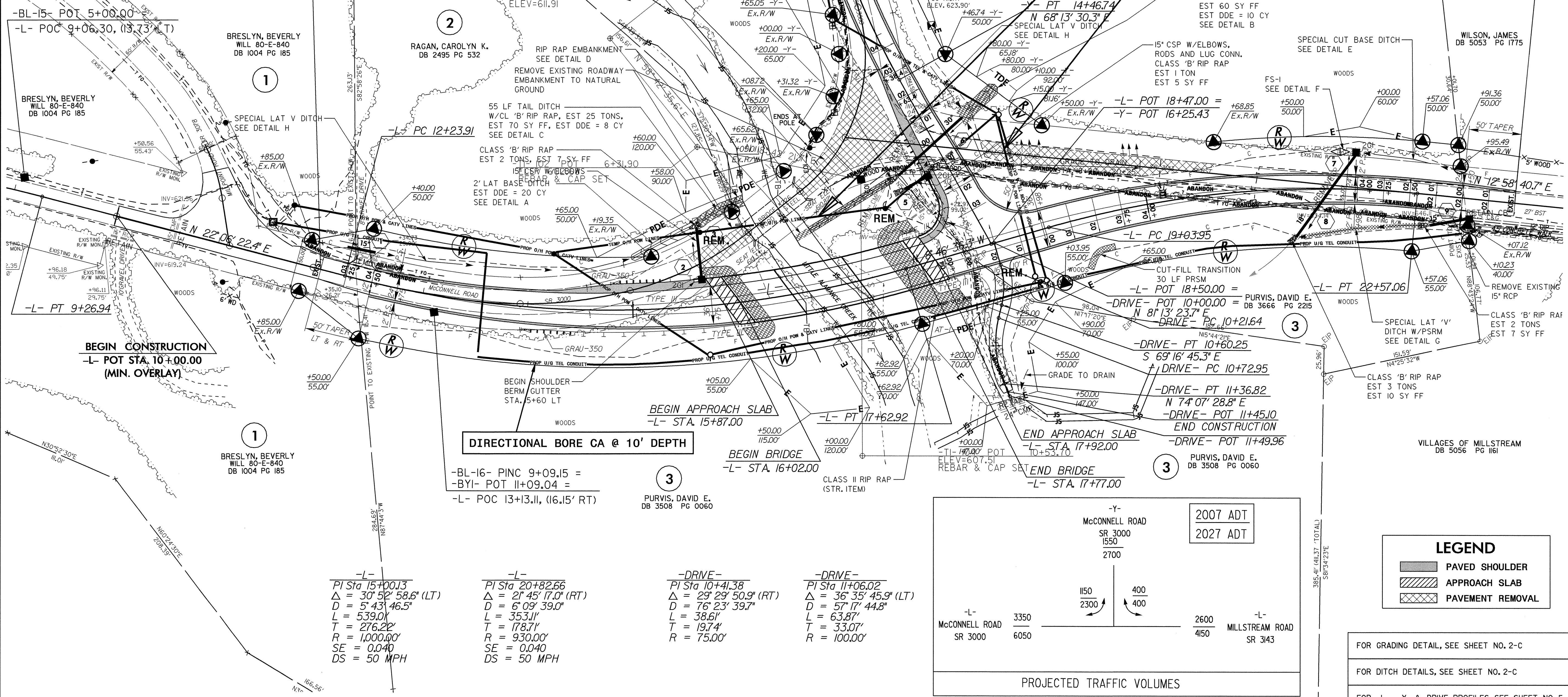
BEGIN CONSTRUCTION
-Y- POC STA. 12+00.00
(S 20°07'00.2" E)



TEMP O/H POWER, TELE AND CATV LINES

BEGIN PROJECT B-4129
-L- POT STA. 12+00.00

END PROJECT B-4129
-L- POT STA. 23+50.00

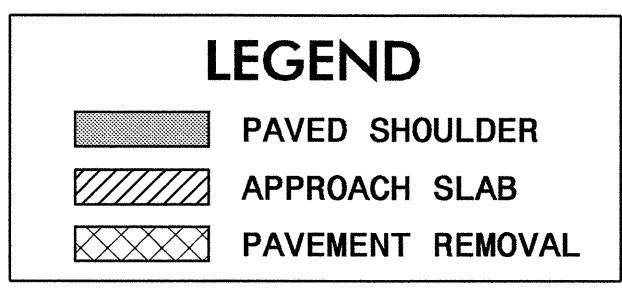
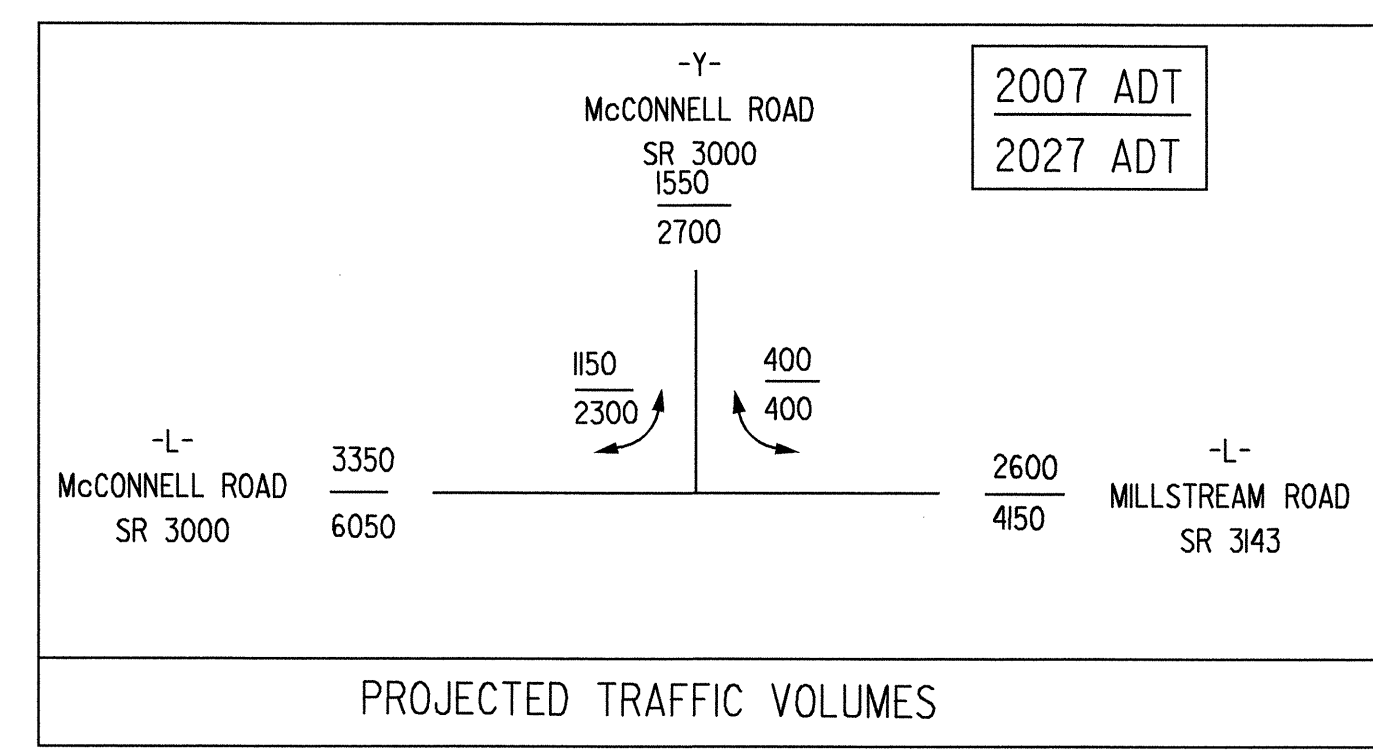


-L-
PI Sta 15+00.13
Δ = 30°52'58.6" (LT)
D = 5°43'46.5"
L = 539.01'
T = 276.22'
R = 1,000.00'
SE = 0.040
DS = 50 MPH

-L-
PI Sta 20+82.66
Δ = 21°45'17.0" (RT)
D = 6°09'39.0"
L = 353.11'
T = 178.71'
R = 930.00'
SE = 0.040
DS = 50 MPH

-DRIVE-
PI Sta 10+41.38
Δ = 29°29'50.9" (RT)
D = 76°23'39.7"
L = 38.61'
T = 19.74'
R = 75.00'

-DRIVE-
PI Sta 11+06.02
Δ = 36°35'45.9" (LT)
D = 57°17'44.8"
L = 63.87'
T = 33.07'
R = 100.00'



FOR GRADING DETAIL, SEE SHEET NO. 2-C
FOR DITCH DETAILS, SEE SHEET NO. 2-C
FOR -L-, -Y- & DRIVE PROFILES, SEE SHEET NO. 5

06-NOV-2007 10:52
 C:\Users\jacob\Documents\B4129\rdy-ut-u02.dgn
 9/17/99
 9/14/99