

STATE OF NORTH CAROLINA
DIVISION OF HIGHWAYS

STATE PROJECT REFERENCE NO.	SHEET NO.
B-4077 & B-4078	TCP-1

**PLAN FOR PROPOSED
TRAFFIC CONTROL, MARKING & DELINEATION
COLUMBUS COUNTY**

B-4077 & B-4078

ROADWAY STANDARD DRAWINGS

THE FOLLOWING ROADWAY STANDARDS AS APPEAR IN "ROADWAY STANDARD DRAWINGS"- PROJECT SERVICES UNIT-N.C. DEPARTMENT OF TRANSPORTATION-RALEIGH, N.C., DATED JULY 2006 ARE APPLICABLE TO THIS PROJECT AND BY REFERENCE HEREBY ARE CONSIDERED A PART OF THESE PLANS:

STD. NO.	TITLE
1101.02	TEMPORARY LANE CLOSURES
1101.03	TEMPORARY ROAD CLOSURES
1101.04	TEMPORARY SHOULDER CLOSURES
1101.11	TRAFFIC CONTROL DESIGN TABLES
1110.01	STATIONARY WORK ZONE SIGNS
1110.02	PORTABLE WORK ZONE SIGNS
1130.01	DRUM
1135.01	CONES
1145.01	BARRICADES
1150.01	FLAGGING DEVICES
1165.01	TRUCK MOUNTED IMPACT ATTENUATOR
1205.01	PAVEMENT MARKINGS - LINE TYPES & OFFSETS
1205.02	PAVEMENT MARKINGS - 2 LANE & MULTILANE ROADWAYS
1205.12	PAVEMENT MARKINGS - BRIDGES
1250.01	PAVEMENT MARKER SPACING
1251.01	RAISED PAVEMENT MARKERS (TEMPORARY & PERMANENT)
1261.01	GUARDRAIL & BARRIER DELINEATOR SPACING
1261.02	GUARDRAIL & BARRIER DELINEATOR TYPES
1262.01	GUARDRAIL END DELINEATION

INDEX OF SHEETS

SHEET NO.	TITLE
TCP-1	LIST OF APPLICABLE ROADWAY STANDARD DRAWINGS, LEGEND AND INDEX OF SHEETS
TCP-2	B-4077 & B-4078 PROJECT NOTES
TCP-3	B-4077 PHASING
TCP-4	B-4077 PHASE I DETAIL
TCP-5	B-4077 PHASE II DETAIL
TCP-6	B-4077 PHASE III DETAIL
TCP-7	B-4078 PHASING
TCP-8	B-4078 PHASE I DETAIL
TCP-9	B-4078 PHASE II DETAIL
TCP-10	B-4078 PHASE III DETAIL
TCP-11	ADVANCED WORK ZONE WARNING SIGNS

LEGEND

- GENERAL**
- DIRECTION OF TRAFFIC FLOW
 - NORTH ARROW
 - PROPOSED PVMT. EXIST. PVMT.
 - WORK AREA
 - REMOVAL OF EXISTING PAVEMENT
- TRAFFIC CONTROL DEVICES**
- TYPE III BARRICADE
 - DRUM
 - CRASH CUSHION

TIP PROJECT:

03-JUN-2008 11:21 AM C:\pcc\projects\B4077\TrafficControl\TCP\B4077-B4078-TCP-TCP01.dgn

APPROVED: <i>Meredith McDiarmid</i> DATE: <i>6/2/06</i>	PLAN PREPARED BY: N.C.D.O.T. WORK ZONE TRAFFIC CONTROL UNIT
SEAL 	J. S. BOURNE, P.E. TRAFFIC CONTROL ENGINEER
	M. McDIARMID, P.E. TRAFFIC CONTROL PROJECT ENGINEER
	C. B. HOWARD TRAFFIC CONTROL PROJECT DESIGN ENGINEER
	M. D. STOKES TRAFFIC CONTROL DESIGN ENGINEER / TECHNICIAN

PROJECT NOTES

PROJ. REFERENCE NO.	SHEET NO.
B-4077 & B-4078	TCP-2

GENERAL NOTES

CHANGES MAY BE REQUIRED WHEN PHYSICAL DIMENSIONS IN THE DETAIL DRAWINGS, STANDARD DETAILS AND ROADWAY DETAILS ARE NOT ATTAINABLE TO MEET FIELD CONDITIONS, OR RESULT IN DUPLICATE, OR UNDESIRED OVERLAPPING OF DEVICES. MODIFICATION MAY INCLUDE: MOVING, SUPPLEMENTING, COVERING OR REMOVAL OF DEVICES, AS DIRECTED BY THE ENGINEER.

THE FOLLOWING GENERAL NOTES APPLY AT ALL TIMES FOR THE DURATION OF THE CONSTRUCTION PROJECT, EXCEPT WHEN OTHERWISE NOTED IN THE PLAN, OR DIRECTED BY THE ENGINEER.

TIME RESTRICTIONS

- A) CONTRACTOR SHALL SUSPEND WORK DURING A HURRICANE EVACUATION EVENT.
- B) DO NOT CLOSE OR NARROW TRAVEL LANES DURING HOLIDAYS AND SPECIAL EVENTS AS FOLLOWS:

ROAD NAME

NC 130

HOLIDAY

1. FOR ANY UNEXPECTED OCCURRENCE THAT CREATES UNUSUALLY HIGH TRAFFIC VOLUMES, AS DIRECTED BY THE ENGINEER.
2. FOR NEW YEAR'S, BETWEEN THE HOURS OF 4:30 P.M. DECEMBER 31st TO 8:30 A.M. JANUARY 2ND. IF NEW YEAR'S DAY IS ON A FRIDAY, SATURDAY, SUNDAY, OR MONDAY THEN UNTIL 8:30 A.M. THE FOLLOWING TUESDAY.
3. FOR EASTER, BETWEEN THE HOURS OF 4:30 P.M. THURSDAY AND 8:30 A.M. MONDAY.
4. FOR MEMORIAL DAY, BETWEEN THE HOURS OF 4:30 P.M. FRIDAY TO 8:30 A.M. TUESDAY.
5. FOR INDEPENDENCE DAY, BETWEEN THE HOURS OF 4:30 P.M. THE DAY BEFORE INDEPENDENCE DAY AND 8:30 A.M. THE DAY AFTER INDEPENDENCE DAY.

IF INDEPENDENCE DAY IS ON A FRIDAY, SATURDAY, SUNDAY OR MONDAY THEN BETWEEN THE HOURS OF 4:30 P.M. THE THURSDAY BEFORE INDEPENDENCE DAY AND 8:30 A.M. THE TUESDAY AFTER INDEPENDENCE DAY.
6. FOR LABOR DAY, BETWEEN THE HOURS OF 4:30 P.M. FRIDAY AND 8:30 A.M. TUESDAY.
7. FOR THANKSGIVING DAY, BETWEEN THE HOURS OF 4:30 P.M. TUESDAY TO 8:30 A.M. MONDAY.
8. FOR CHRISTMAS, BETWEEN THE HOURS OF 4:30 P.M. THE FRIDAY BEFORE THE WEEK OF CHRISTMAS DAY AND 8:30 A.M. THE FOLLOWING TUESDAY AFTER THE WEEK OF CHRISTMAS.

LANE AND SHOULDER CLOSURE REQUIREMENTS

- C) REMOVE LANE CLOSURE DEVICES FROM THE LANE WHEN WORK IS NOT BEING PERFORMED BEHIND THE LANE CLOSURE OR WHEN A LANE CLOSURE IS NO LONGER NEEDED, OR AS DIRECTED BY THE ENGINEER.
- D) WHEN PERSONNEL AND/OR EQUIPMENT ARE WORKING WITHIN 15 FT OF AN AN OPEN TRAVEL LANE, CLOSE THE NEAREST OPEN SHOULDER USING ROADWAY STANDARD DRAWING NO. 1101.04 UNLESS THE WORK AREA IS PROTECTED BY BARRIER OR GUARDRAIL OR A LANE CLOSURE IS INSTALLED.

- E) WHEN PERSONNEL AND/OR EQUIPMENT ARE WORKING ON THE SHOULDER ADJACENT TO AN UNDIVIDED FACILITY AND WITHIN 5 FT OF AN OPEN TRAVEL LANE, CLOSE THE NEAREST OPEN TRAVEL LANE USING ROADWAY STANDARD DRAWING NO. 1101.02 UNLESS THE WORK AREA IS PROTECTED BY BARRIER OR GUARDRAIL.
- F) WHEN PERSONNEL AND/OR EQUIPMENT ARE WORKING WITHIN A LANE OF TRAVEL OF AN UNDIVIDED OR DIVIDED FACILITY, CLOSE THE LANE ACCORDING TO THE TRAFFIC CONTROL PLANS, ROADWAY STANDARD DRAWINGS OR AS DIRECTED BY THE ENGINEER. CONDUCT THE WORK SO THAT ALL PERSONNEL AND/OR EQUIPMENT REMAIN WITHIN THE CLOSED TRAVEL LANE.
- G) DO NOT WORK SIMULTANEOUSLY WITHIN 15 FT ON BOTH SIDES OF AN OPEN TRAVELWAY, RAMP OR LOOP WITHIN THE SAME LOCATION UNLESS PROTECTED WITH GUARDRAIL OR BARRIER.
- H) PROVIDE TRAFFIC CONTROL FOR APPROPRIATE LANE CLOSURES FOR SURVEYING DONE BY THE DEPARTMENT.

PAVEMENT EDGE DROP OFF REQUIREMENTS

- I) BACKFILL AT A 6:1 SLOPE UP TO THE EDGE AND ELEVATION OF EXISTING PAVEMENT IN AREAS ADJACENT TO AN OPENED TRAVEL LANE THAT HAS AN EDGE OF PAVEMENT DROP-OFF AS FOLLOWS:

BACKFILL DROP-OFFS THAT EXCEED 2 INCHES ON ROADWAYS WITH POSTED SPEED LIMITS OF 45 MPH OR GREATER.

BACKFILL WITH SUITABLE COMPACTED MATERIAL, AS APPROVED BY THE ENGINEER, AT NO EXPENSE TO THE DEPARTMENT.
- J) DO NOT EXCEED A DIFFERENCE OF 2 INCHES IN ELEVATION BETWEEN OPEN LANES OF TRAFFIC FOR NOMINAL LIFTS OF 1.5 INCHES. INSTALL ADVANCE WARNING "UNEVEN LANES" SIGNS (W8-11) 500 FEET IN ADVANCE AND A MINIMUM OF EVERY HALF MILE THROUGHOUT THE UNEVEN AREA.

TRAFFIC PATTERN ALTERATIONS

- K) NOTIFY THE ENGINEER TWENTY ONE (21) CALENDAR DAYS PRIOR TO ANY TRAFFIC PATTERN ALTERATION.

SIGNING

- L) INSTALL ADVANCE WORK ZONE WARNING SIGNS WHEN WORK IS WITHIN 40 FT FROM THE EDGE OF TRAVEL LANE AND NO MORE THAN THREE (3) DAYS PRIOR TO THE BEGINNING OF CONSTRUCTION.
- M) PROVIDE PERMANENT SIGNING.
- N) PROVIDE DETOUR SIGNING WITHIN THE PROJECT LIMITS.
- O) ENSURE ALL NECESSARY SIGNING IS IN PLACE PRIOR TO ALTERING ANY TRAFFIC PATTERN.

TRAFFIC CONTROL DEVICES

- P) SPACE CHANNELIZING DEVICES IN WORK AREAS NO GREATER THAN TWICE THE POSTED SPEED LIMIT (MPH), EXCEPT 10 FT ON-CENTER IN RADII, AND 3 FT OFF THE EDGE OF AN OPEN TRAVELWAY, WHEN LANE CLOSURES ARE NOT IN EFFECT. WHEN SKINNY DRUMS ARE ALLOWED, REFER TO SECTION 1180 OF STANDARD SPECIFICATIONS FOR ROADS AND STRUCTURES OR AS SHOWN IN THE PLANS.
- Q) PLACE TYPE III BARRICADES, WITH "ROAD CLOSED" SIGN R11-2 ATTACHED, OF SUFFICIENT LENGTH TO CLOSE ENTIRE ROADWAY.

PAVEMENT MARKINGS AND MARKERS

- R) INSTALL PAVEMENT MARKINGS AND PAVEMENT MARKERS ON THE FINAL SURFACE AS FOLLOWS:

ROAD NAME	MARKING	MARKER
NC 130	THERMOPLASTIC	PERMANENT RAISED


- S) INSTALL TEMPORARY PAVEMENT MARKINGS AND TEMPORARY PAVEMENT MARKERS ON INTERIM LAYERS OF PAVEMENT AS FOLLOWS:

ROAD NAME	MARKING	MARKER
NC 130	PAINT	TEMPORARY RAISED

- T) PLACE ONE APPLICATION OF PAINT FOR TEMPORARY TRAFFIC PATTERNS. PLACE A SECOND APPLICATION OF PAINT SIX (6) MONTHS AFTER THE INITIAL APPLICATION AND EVERY SIX MONTHS AS DIRECTED BY THE ENGINEER.
- U) TIE PROPOSED PAVEMENT MARKING LINES TO EXISTING PAVEMENT MARKING LINES.
- V) REMOVE/REPLACE ANY CONFLICTING/DAMAGED PAVEMENT MARKINGS AND MARKERS BY THE END OF EACH DAY'S OPERATION.

MISCELLANEOUS

- W) IN THE EVENT A TIE-IN CANNOT BE MADE IN ONE DAYS TIME, BRING THE TIE-IN AREA TO AN APPROPRIATE ROADWAY ELEVATION, AS DETERMINED BY THE ENGINEER. PLACE BLACK ON ORANGE "LOOSE GRAVEL" SIGNS (W8-7) AND BLACK ON ORANGE "PAVEMENT ENDS" SIGNS (W8-3) 500 FEET AND 1000 FEET RESPECTIVELY IN ADVANCE OF THE UNEVEN AREAS. USE DRUMS TO DELINEATE THE EDGE OF ROADWAY ALONG UNPAVED AREAS.

APPROVED: <i>M. McQuinn</i> DATE: 6/2/08 	<h2 style="margin: 0;">B-4077 & B-4078</h2> <h3 style="margin: 0;">PROJECT NOTES</h3>	<table border="1" style="width: 100%; border-collapse: collapse; font-size: 8px;"> <tr> <td>SCALE:</td> <td>NONE</td> </tr> <tr> <td>DATE:</td> <td>5-08</td> </tr> <tr> <td>DWG. BY:</td> <td>MDS</td> </tr> <tr> <td>DESIGN BY:</td> <td>MDS</td> </tr> <tr> <td>REVIEWED BY:</td> <td>CBH</td> </tr> </table>	SCALE:	NONE	DATE:	5-08	DWG. BY:	MDS	DESIGN BY:	MDS	REVIEWED BY:	CBH
SCALE:	NONE											
DATE:	5-08											
DWG. BY:	MDS											
DESIGN BY:	MDS											
REVIEWED BY:	CBH											

03-JUN-2008 07:20
 \\dot\dfsroot\01\proj\01\proj\01\TrafficControl\top\B4077-TrafficControl\B4077-B4078-TC-TCP02.dgn
 AT WZ1224243

B-4077 PHASING

PROJ. REFERENCE NO.	SHEET NO.
B-4077 & B-4078	TCP-3

THE TRAFFIC CONTROL PLANS FOR B-4077 AND B-4078 ARE DESIGNED TO BE CONSTRUCTED SIMULTANEOUSLY.

PHASE I

NOTE: MAINTAIN TRAFFIC ACCESS TO DRIVEWAYS LOCATED WITHIN THE PROJECT LIMITS.

IF GUARDRAIL INSTALLATION CANNOT BE COMPLETED IN ONE WORKING DAY AND THE UNPROTECTED GUARDRAIL END IS WITHIN 30 FEET OF AN OPEN TRAVEL LANE, PROTECT THE EXPOSED END OF THE GUARDRAIL USING AN APPROVED METHOD UNTIL THE INSTALLATION IS COMPLETE.

- STEP 1: - INSTALL WORK ZONE WARNING SIGNS ON NC 130 IN ACCORDANCE WITH SHEET TCP-11. IF SIGNS ARE INSTALLED MORE THAN THREE(3) DAYS BEFORE CONSTRUCTION BEGINS COVER SIGNS ACCORDING TO STANDARD SPECIFICATION SECTION 1110-1 AND 1110-3.
- STEP 2: - INSTALL TEMPORARY GUARDRAIL AT EXISTING BRIDGE RAILING FROM -L- STA. 32+06+/- TO -L- STA. 33+63+/-.
- STEP 3: - AWAY FROM TRAFFIC, INSTALL THE TEMPORARY CORRUGATED PIPE AT -DET- STA. 21+50+/- . SEE SHEET TCP-4.
 - USING ROADWAY STANDARD DRAWING 1101.02, SHEET 1 OF 9, CONSTRUCT DETOUR BRIDGE, DETOUR GUARDRAIL AND ONSITE DETOUR UP TO EDGE AND ELEVATION OF EXISTING ROADWAY NC 130 FROM -DET- STA. 11+75+/- TO -DET- STA. 36+00+/- . INSTALL TYPE III BARRICADES AND DRUMS TO CLOSE DETOUR TO TRAFFIC. SEE SHEET TCP-4.
 - USING ROADWAY STANDARD DRAWING 1101.03, SHEET 3 OF 9, INSTALL AND COVER WORK ZONE SIGNING FOR THE DETOUR OPERATIONS.

PHASE II

- STEP 1: - USING ROADWAY STANDARD DRAWING 1101.02, SHEET 1 OF 9, TIE-IN DETOUR TO EXISTING ROADWAY NC 130 FROM -DET- STA. 10+00+/- TO -DET- STA. 11+75+/- AND FROM -DET- STA. 36+00+/- TO -DET- STA. 37+51+/- . USING ROADWAY STANDARD DRAWING 1101.03, SHEET 3 OF 9, AND SHEET TCP-5, PLACE TEMPORARY PAINT PAVEMENT MARKINGS AND TEMPORARY PAVEMENT MARKERS. SEE THIS SHEET FOR TEMPORARY PAVEMENT MARKING SCHEDULE.
 - UNCOVER SIGNING FOR DETOUR OPERATIONS AND USING ROADWAY STANDARD DRAWING 1101.02, SHEET 1 OF 9, SHIFT TRAFFIC ONTO CONSTRUCTED DETOUR. PLACE TYPE III BARRICADES AND DRUMS TO CLOSE -L- TO TRAFFIC. SEE SHEET TCP-5.
- STEP 2: - USING ROADWAY STANDARD DRAWING 1101.02, SHEET 1 OF 9, CONSTRUCT -L- BRIDGE AND PROPOSED -L- ROADWAY UP TO BUT NOT INCLUDING FINAL SURFACE COURSE FROM -L- STA. 20+38+/- TO -L- STA. 36+33+/- . CONTRACTOR SHALL MAINTAIN EXISTING SLOPE ON NORTH SIDE OF -L- (DETOUR SIDE) FROM -L- STA. 30+75+/- TO -L- STA. 32+50+/- AND NOT CONSTRUCT PROPOSED 3:1 SLOPE UNTIL AFTER THE REMOVAL OF THE DETOUR. SEE SHEET TCP-5 AND "-L- SLOPE DETAIL".
 - INSTALL PROPOSED SOUTH SIDE GUARDRAIL FROM -L- STA. 29+82+/- TO -L- STA. 31+20+/- AND FROM -L- STA. 32+10+/- TO -L- STA. 35+10+/- . INSTALL NORTH SIDE GUARDRAIL FROM -L- STA. 28+22+/- TO -L- STA. 31+20+/- ONLY. NORTH SIDE GUARDRAIL INSTALLATION SHALL BE COMPLETED AT PHASE III, STEP 2. INSTALL TEMPORARY CRASH CUSHION TO NORTH SIDE BRIDGE RAILING AT -L- STA. 32+10+/- . SEE SHEET TCP-5.


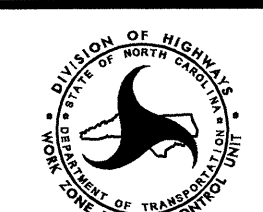
PHASE III

- STEP 1: - USING ROADWAY STANDARD DRAWING 1101.02, SHEET 1 OF 9, CONSTRUCT TIE-INS UP TO BUT NOT INCLUDING FINAL SURFACE COURSE OF THE PROPOSED -L- FROM -L- STA. 14+63+/- TO -L- STA. 20+38+/- AND FROM -L- STA. 36+33+/- TO -L- STA. 41+67+/- .
 - USING ROADWAY STANDARD DRAWING 1101.02, SHEET 1 OF 9, PLACE TEMPORARY PAINT PAVEMENT MARKINGS AND TEMPORARY PAVEMENT MARKERS ON -L- FROM -L- STA. 14+63+/- TO -L- STA. 41+67+/- AND TIE-IN TO EXISTING PAVEMENT MARKINGS ON NC 130. SEE SHEET TCP-6 FOR TEMPORARY PAVEMENT MARKING PLACEMENT AND THIS SHEET FOR TEMPORARY PAVEMENT MARKING SCHEDULE.
 - USING ROADWAY STANDARD DRAWING 1101.02, SHEET 1 OF 9, REMOVE DETOUR SIGNING AND BARRICADES AND SHIFT TRAFFIC TO PROPOSED -L- . INSTALL TYPE III BARRICADES AND DRUMS AND CLOSE DETOUR TO TRAFFIC. SEE SHEET TCP-6.
- STEP 2: - USING ROADWAY STANDARD DRAWING 1101.02, SHEET 1 OF 9, REMOVE DETOUR AND DETOUR BRIDGE.
 - USING ROADWAY STANDARD DRAWING 1101.02, SHEET 1 OF 9, COMPLETE CONSTRUCTION OF PROPOSED -L- ROADWAY AND INSTALL PROPOSED NORTH SIDE GUARDRAIL ON -L- FROM -L- STA. 32+10+/- TO -L- STA. 33+47+/- . SEE SHEET TCP-6.
- STEP 3: - USING ROADWAY STANDARD DRAWING 1101.02, SHEET 1 OF 9, PLACE FINAL LAYER OF SURFACE COURSE, THERMOPLASTIC PAVEMENT MARKINGS AND PERMANENT RAISED MARKERS. SEE SHEET TCP-6 FOR FINAL PAVEMENT MARKING PLACEMENT AND THIS SHEET FOR FINAL PAVEMENT MARKING SCHEDULE.
 - REMOVE ALL REMAINING TEMPORARY TRAFFIC CONTROL DEVICES AND OPEN -L- NC 130 TO TRAFFIC.

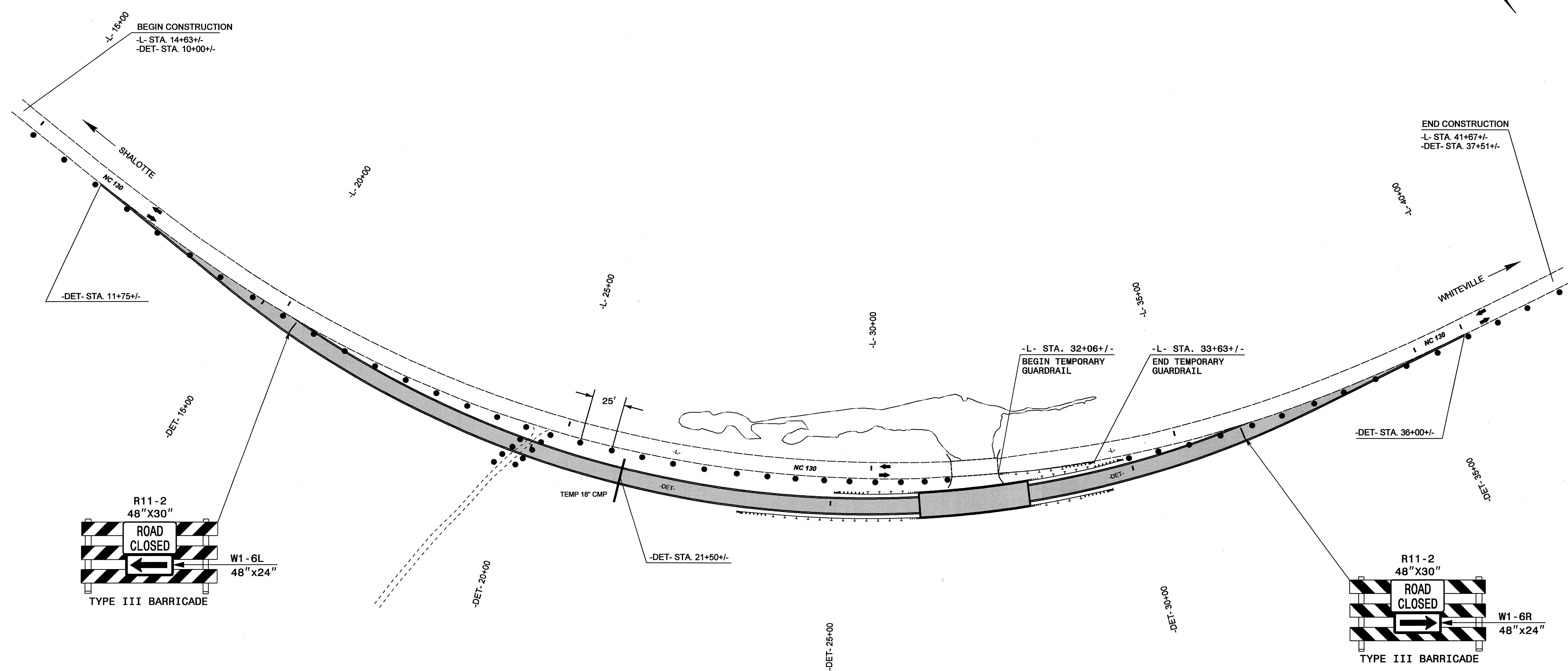
B-4077 PAVEMENT MARKING SCHEDULE

SYMBOL	DESCRIPTION	PAY ITEM BREAKDOWN	QUANTITY	TOTAL QUANTITY
TEMPORARY PAVEMENT MARKING SCHEDULE				
PAVEMENT MARKINGS				
<u>PAINT 4"</u>				
PA	WHITE EDGELINE		16412 LF	
PI	YELLOW DOUBLE CENTER		19108 LF	
			TOTAL	35520 LF
MARKERS				
<u>TEMPORARY RAISED</u>				
MH	YELLOW & YELLOW		216 EA	
			TOTAL	216 EA
FINAL PAVEMENT MARKING SCHEDULE				
PAVEMENT MARKINGS				
<u>THERMOPLASTIC 4" x 90 MILS</u>				
TA	WHITE EDGELINE		5408 LF	
			TOTAL	5408 LF
<u>THERMOPLASTIC 4" x 120 MILS</u>				
TI	YELLOW DOUBLE CENTER		5408 LF	
			TOTAL	5408 LF
MARKERS				
<u>PERMANENT RAISED</u>				
MA	YELLOW & YELLOW		36 EA	
			TOTAL	36 EA

09-JUL-2008 13:55 \\dot\dfsroot\01\proj\11\proj\11\tr\affico\tr\afficocontrol\top\b4077-b4078_top03.dgn AT WZTC24745

APPROVED: <i>M. M. ...</i> DATE: 7/14/08	B-4077 PHASING	
	SCALE: NONE	
	DATE: 7-08	
	DWG. BY: MDS	
	DESIGN BY: MDS	
REVIEWED BY: CBH	REVISIONS	

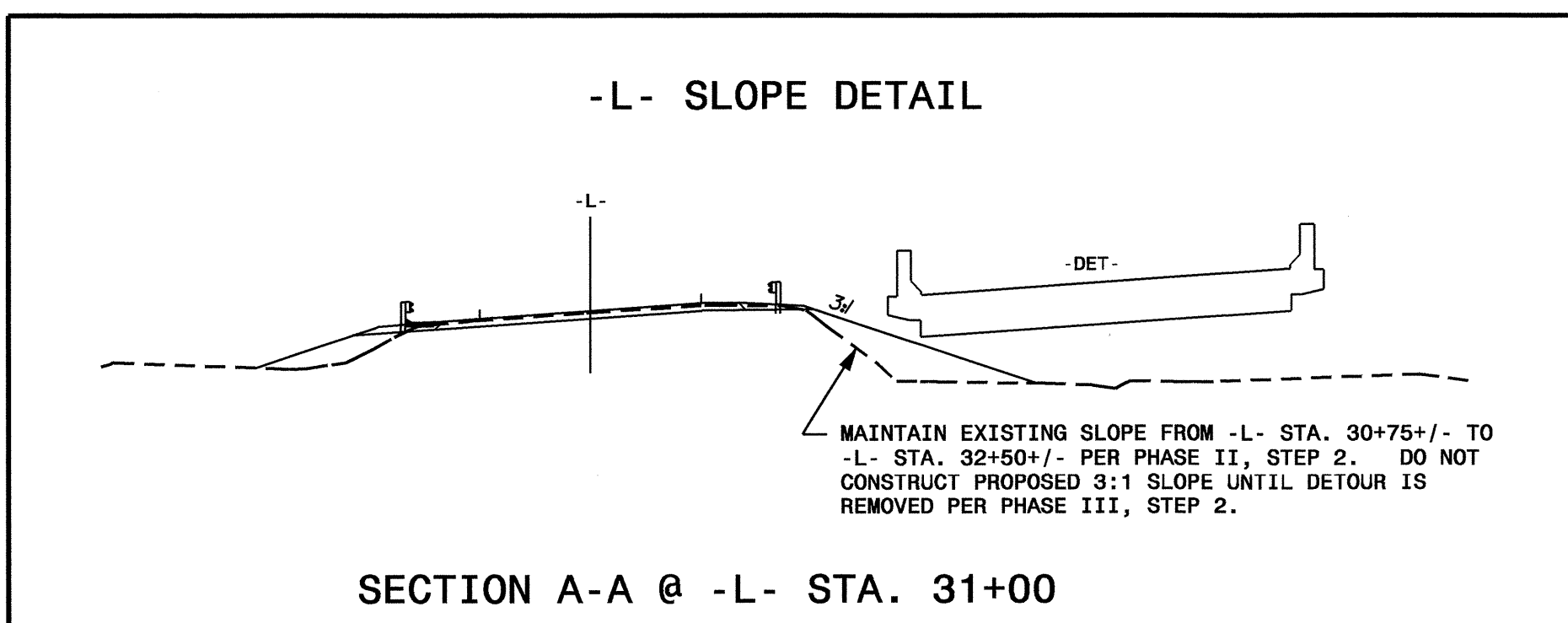
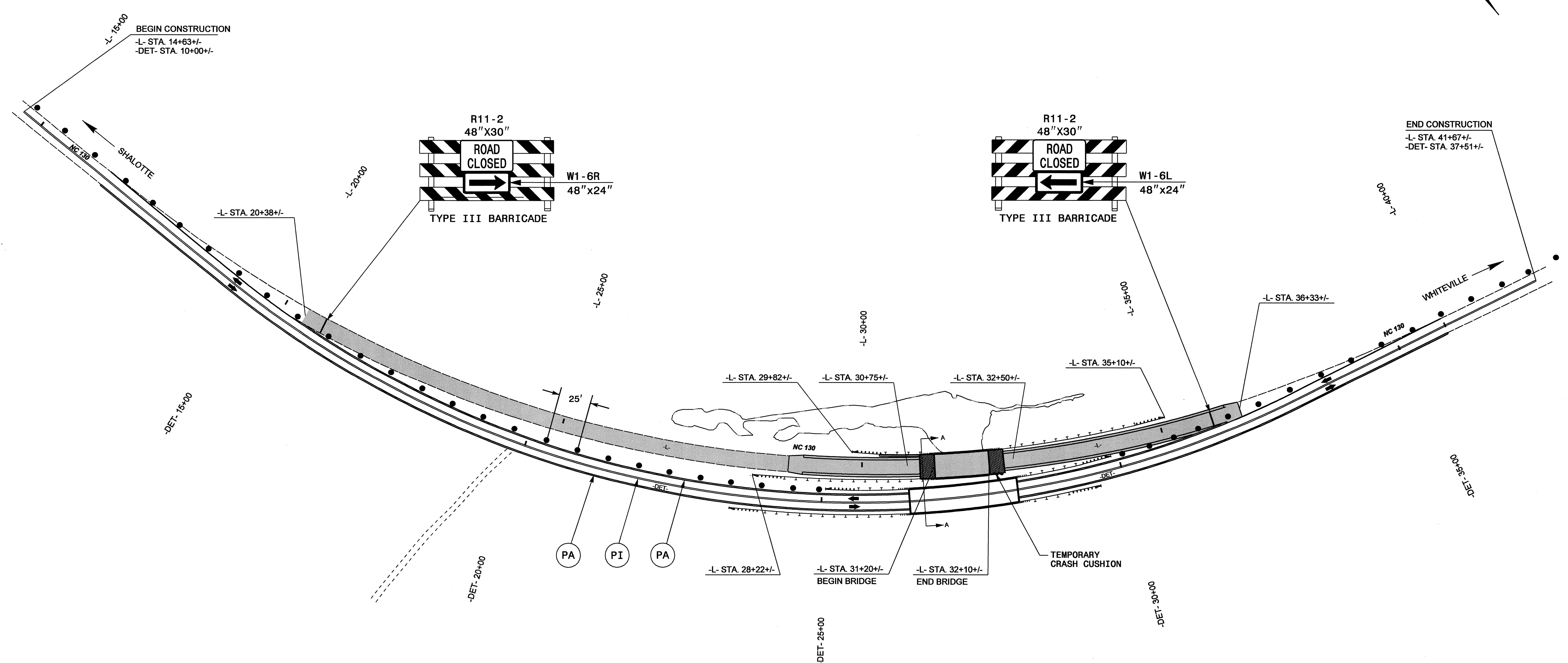
B-4077 -DET- CONSTRUCTION



09-JUL-2008 14:34
 \\dot\dfs\p01\proj\traffic\control\top\b4077-b4078-tc_top04.dgn
 detokas AT WZTC24145

APPROVED: <i>M. McArthur</i> DATE: 7/14/08		B-4077 PHASE I DETAIL											
	SCALE: NONE												
	DATE: 7-08	<table border="1"> <thead> <tr> <th colspan="2">REVISIONS</th> </tr> </thead> <tbody> <tr> <td> </td> <td> </td> </tr> <tr> <td> </td> <td> </td> </tr> <tr> <td> </td> <td> </td> </tr> </tbody> </table>				REVISIONS							
	REVISIONS												
DWG. BY: MDS	<table border="1"> <tr> <td>CADD FILE</td> </tr> </table>		CADD FILE										
CADD FILE													
DESIGN BY: MDS													
REVIEWED BY: CBH													

B-4077 -L- CONSTRUCTION

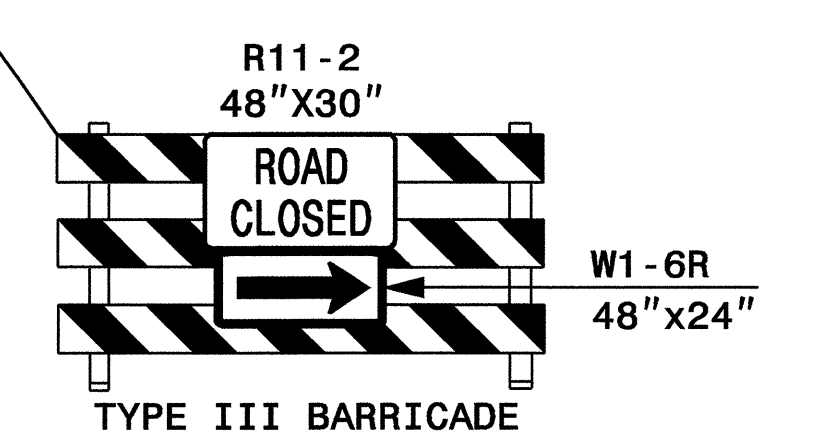
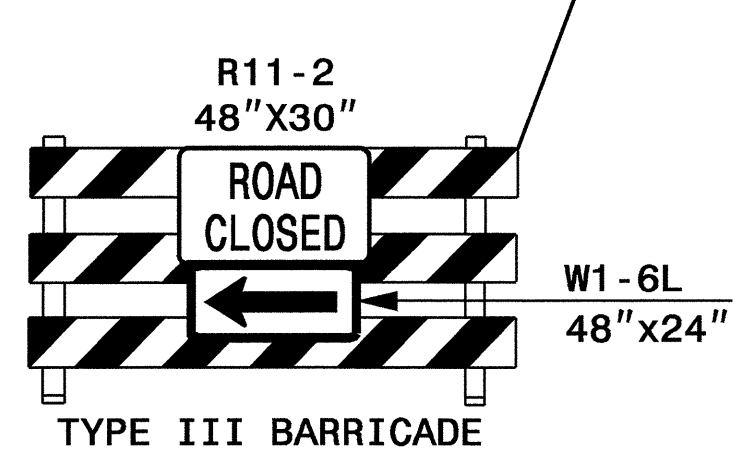
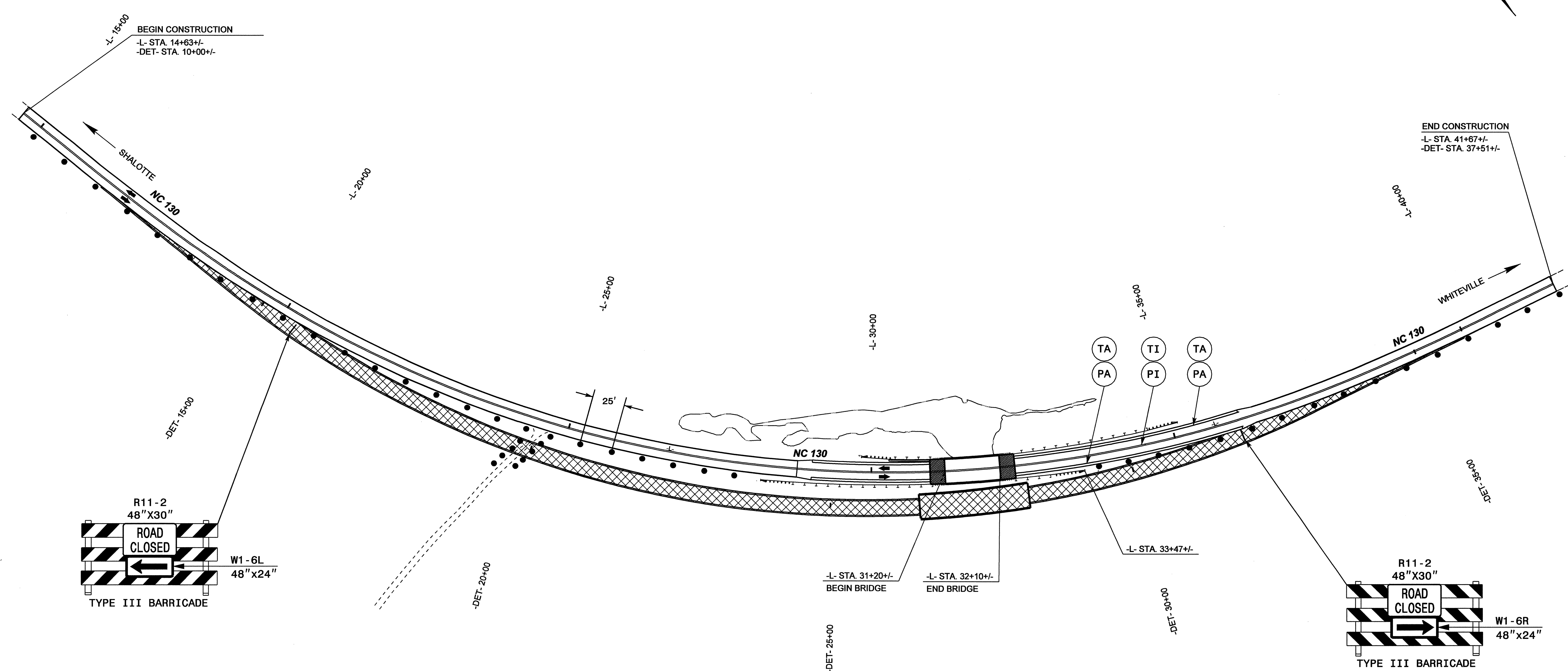


SEE SHEET TCP-3 FOR PAVEMENT MARKING SCHEDULE

APPROVED: <i>[Signature]</i> DATE: 7/14/08 	B-4077 PHASE II DETAIL							
	SCALE: NONE DATE: 7-08 DWG. BY: MDS DESIGN BY: MDS REVIEWED BY: CBH		REVISIONS <table border="1"> <tr><td> </td><td> </td></tr> <tr><td> </td><td> </td></tr> <tr><td> </td><td> </td></tr> </table>					

09-JUL-2008 14:36
 V:\dot\dfs\01\proj\projects-b\4077\trafficcontrol\tcp\B4077-B4078-TC-TCP05.dgn
 AT: W:\224745

B-4077 -DET- REMOVAL AND -L-COMPLETION



SEE SHEET TCP-3 FOR PAVEMENT MARKING SCHEDULE

APPROVED: <i>M. M. M. M.</i> DATE: 7/14/08	<h2>B-4077</h2> <h3>PHASE III DETAIL</h3>		REVISIONS					
				<table border="1"> <tr><td> </td><td> </td></tr> <tr><td> </td><td> </td></tr> <tr><td> </td><td> </td></tr> </table>				
SCALE: NONE	DATE: 7-08	DESIGN BY: MDS	REVIEWED BY: CBH					

09-JUL-2008 14:35
 \\dot\dfsroot\proj\h\pprojects-b\4077\traffic\control\top\B4077-B4078-TC-TCP06.dgn
 astokes AT WZTC24745

B-4078 PHASING

THE TRAFFIC CONTROL PLANS FOR B-4077 AND B-4078 ARE DESIGNED TO BE CONSTRUCTED SIMULTANEOUSLY.

PHASE I

NOTE: IF GUARDRAIL INSTALLATION CANNOT BE COMPLETED IN ONE WORKING DAY AND THE UNPROTECTED GUARDRAIL END IS WITHIN 30 FEET OF AN OPEN TRAVEL LANE, PROTECT THE EXPOSED END OF THE GUARDRAIL USING AN APPROVED METHOD UNTIL THE INSTALLATION IS COMPLETE.

- STEP 1: - INSTALL WORK ZONE WARNING SIGNS ON NC 130 IN ACCORDANCE WITH SHEET TCP-11. IF SIGNS ARE INSTALLED MORE THAN THREE(3) DAYS BEFORE CONSTRUCTION BEGINS COVER SIGNS ACCORDING TO STANDARD SPECIFICATION SECTION 1110-1 AND 1110-3.
- STEP 2: - USING ROADWAY STANDARD DRAWING 1101.02, SHEET 1 OF 9, CONSTRUCT DETOUR BRIDGE, DETOUR GUARDRAIL AND ONSITE DETOUR UP TO EDGE AND ELEVATION OF EXISTING ROADWAY NC 130 FROM -DET- STA. 10+92+/- TO -DET- STA. 21+31+/- . INSTALL TYPE III BARRICADES AND DRUMS TO CLOSE DETOUR TO TRAFFIC. SEE SHEET TCP-8.
- USING ROADWAY STANDARD DRAWING 1101.03, SHEET 3 OF 9, INSTALL AND COVER WORK ZONE SIGNING FOR THE DETOUR OPERATIONS. INSTALL WINDING ROAD SIGNS (W1-5L OR W1-5R) PER NOTE 8 ON THE DRAWING. INSTALL "45 MPH" ADVISORY SPEED PANELS (W13-1) PER NOTE 7 ON THE DRAWING.

PHASE II


- STEP 1: - USING ROADWAY STANDARD DRAWING 1101.02, SHEET 1 OF 9, TIE-IN DETOUR TO EXISTING ROADWAY NC 130 FROM -DET- STA. 10+00+/- TO -DET- STA. 10+92+/- AND FROM -DET- STA. 21+31+/- TO -DET- STA. 22+10+/- . USING ROADWAY STANDARD DRAWING 1101.03, SHEET 3 OF 9, AND SHEET TCP-9, PLACE TEMPORARY PAINT PAVEMENT MARKINGS AND TEMPORARY PAVEMENT MARKERS. SEE THIS SHEET FOR TEMPORARY PAVEMENT MARKING SCHEDULE.
- UNCOVER SIGNING FOR DETOUR OPERATIONS AND USING ROADWAY STANDARD DRAWING 1101.02, SHEET 1 OF 9, SHIFT TRAFFIC ONTO CONSTRUCTED DETOUR. PLACE TYPE III BARRICADES AND DRUMS TO CLOSE -L- TO TRAFFIC. SEE SHEET TCP-9.
- STEP 2: - USING ROADWAY STANDARD DRAWING 1101.02, SHEET 1 OF 9, CONSTRUCT -L- BRIDGE AND PROPOSED -L- ROADWAY UP TO BUT NOT INCLUDING FINAL LAYER OF SURFACE COURSE FROM -L- STA. 12+00+/- TO -L- STA. 18+50+/- . SEE SHEET TCP-9.
- INSTALL ALL PROPOSED GUARDRAIL EXCEPT THE GUARDRAIL ON THE NORTH SIDE OF -L- TO BE LOCATED FROM -L- STA. 16+19+/- TO -L- STA. 19+19+/- . PER THE ROADWAY CONSTRUCTION DRAWINGS, INSTALL ONLY PART OF THE GUARDRAIL BEGINNING AT -L- STA. 16+19+/- AND ENDING WITH A TEMPORARY GUARDRAIL END UNIT AT -L- STA. 18+50+/- . FINAL GUARDRAIL INSTALLATION TO BE COMPLETED AFTER DETOUR IS REMOVED AT PHASE III, STEP 2. SEE SHEET TCP-9.

PHASE III

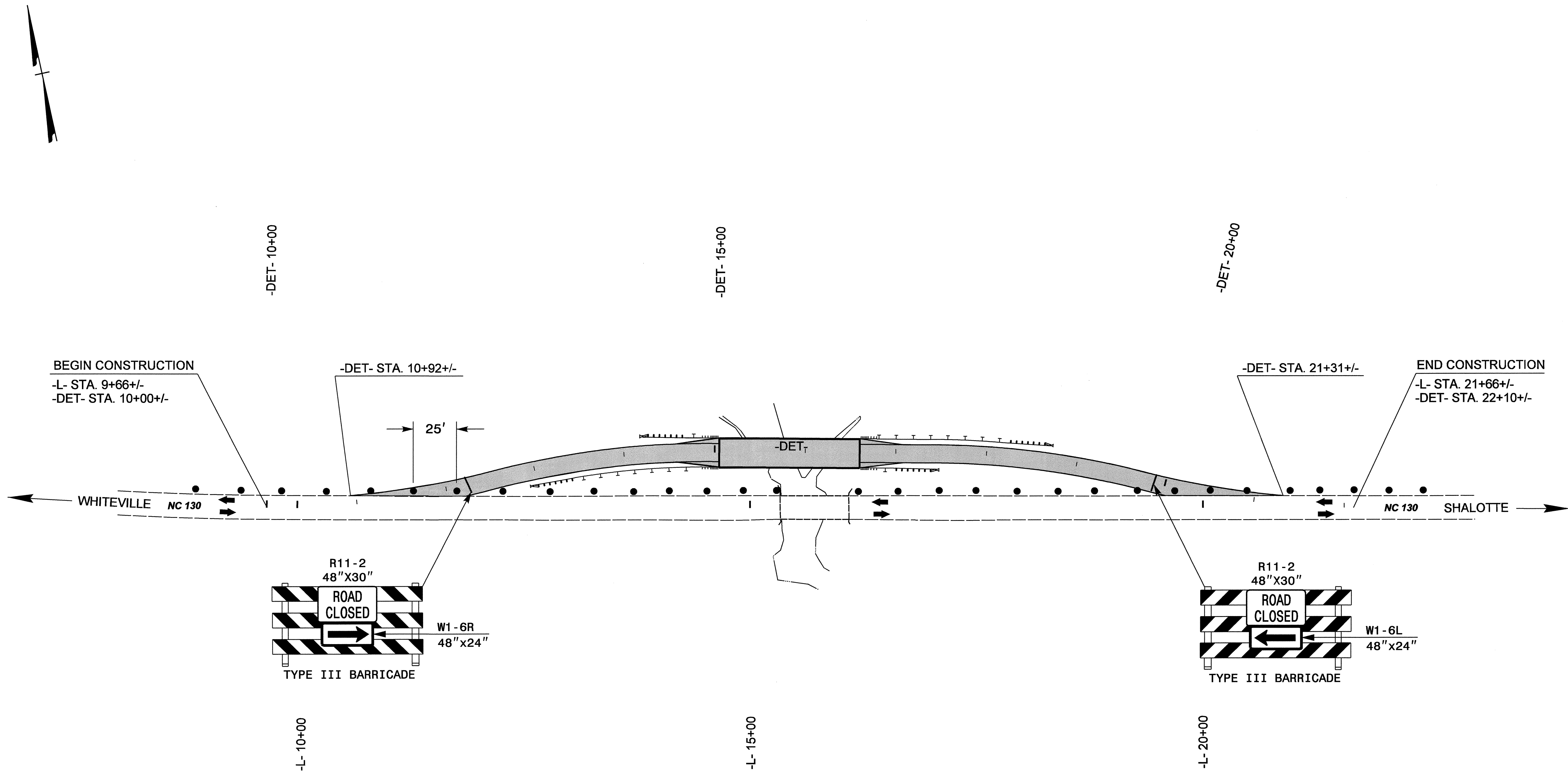
- STEP 1: - USING ROADWAY STANDARD DRAWING 1101.02, SHEET 1 OF 9, PLACE TEMPORARY PAINT MARKINGS AND TEMPORARY PAVEMENT MARKERS ON -L- FROM -L- STA. 9+66+/- TO -L- STA. 21+66+/- AND TIE-IN TO EXISTING MARKINGS ON NC 130. SEE SHEET TCP-10 AND THIS SHEET FOR TEMPORARY MARKING SCHEDULE.
- USING ROADWAY STANDARD DRAWING 1101.02, SHEET 1 OF 9, REMOVE DETOUR SIGNING AND BARRICADES AND SHIFT TRAFFIC TO PROPOSED -L- . INSTALL TYPE III BARRICADES AND DRUMS TO CLOSE -DET- TO TRAFFIC. OBLITERATE ANY CONFLICTING MARKINGS. SEE SHEET TCP-10.
- STEP 2: - USING ROADWAY STANDARD DRAWING 1101.02, SHEET 1 OF 9, REMOVE DETOUR AND DETOUR BRIDGE.
- USING ROADWAY STANDARD DRAWING 1101.02, SHEET 1 OF 9, COMPLETE CONSTRUCTION OF PROPOSED -L- ROADWAY AND PROPOSED GUARDRAIL ON THE NORTH SIDE OF -L- FROM -L- STA. 16+19+/- TO -L- STA. 19+19+/- . SEE SHEET TCP-10.
- STEP 3: - USING ROADWAY STANDARD DRAWING 1101.02, SHEET 1 OF 9, PLACE FINAL LAYER OF SURFACE COURSE, THERMOPLASTIC PAVEMENT MARKINGS AND PERMANENT RAISED MARKERS. SEE SHEET TCP-10 FOR FINAL PAVEMENT MARKING PLACEMENT AND THIS SHEET FOR FINAL PAVEMENT MARKING SCHEDULE.
- REMOVE ALL REMAINING TEMPORARY TRAFFIC CONTROL DEVICES AND OPEN -L- NC 130 TO TRAFFIC.

B-4078 PAVEMENT MARKING SCHEDULE

SYMBOL	DESCRIPTION	PAY ITEM BREAKDOWN	QUANTITY	TOTAL QUANTITY
TEMPORARY PAVEMENT MARKING SCHEDULE				
PAVEMENT MARKINGS				
<u>PAINT 4"</u>				
PA	WHITE EDGELINE		7240 LF	
PI	YELLOW DOUBLE CENTER		10556 LF	
			TOTAL	17796 LF
MARKERS				
<u>TEMPORARY RAISED</u>				
MH	YELLOW & YELLOW		127 EA	
			TOTAL	127 EA
FINAL PAVEMENT MARKING SCHEDULE				
PAVEMENT MARKINGS				
<u>THERMOPLASTIC 4" x 90 MILS</u>				
TA	WHITE EDGELINE		2400 LF	
			TOTAL	2400 LF
<u>THERMOPLASTIC 4" x 120 MILS</u>				
TI	YELLOW DOUBLE CENTER		2400 LF	
			TOTAL	2400 LF
MARKERS				
<u>PERMANENT RAISED</u>				
MA	YELLOW & YELLOW		17 EA	
			TOTAL	17 EA

APPROVED: <i>M. M. Smith</i> DATE: 6/3/08	B-4078 PHASING	
	SCALE: NONE	REVISIONS
	DATE: 5-08	
	DWG. BY: MDS	
	DESIGN BY: MDS	
REVIEWED BY: CBH		

B-4078 -DET- CONSTRUCTION



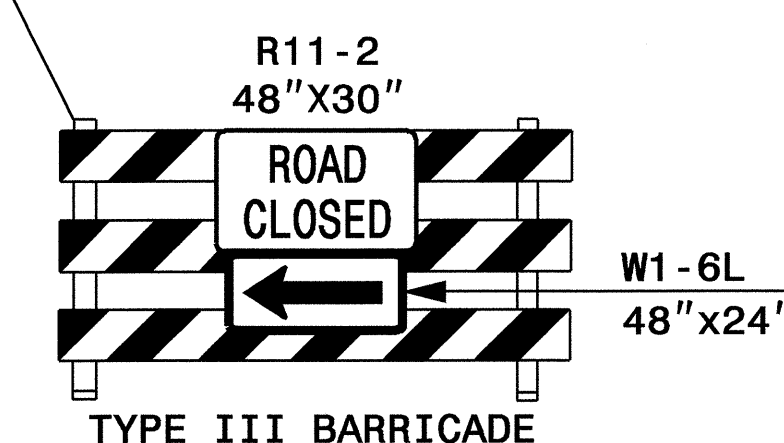
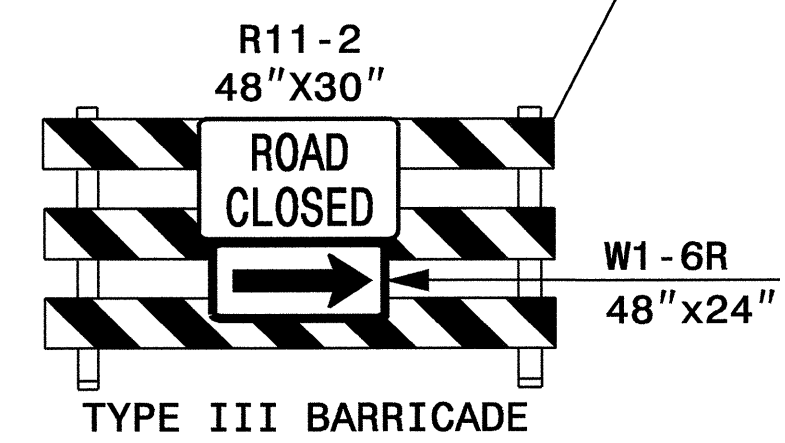
BEGIN CONSTRUCTION
-L- STA. 9+66+/-
-DET- STA. 10+00+/-

-DET- STA. 10+92+/-

25'

-DET- STA. 21+31+/-

END CONSTRUCTION
-L- STA. 21+66+/-
-DET- STA. 22+10+/-



APPROVED: *M. M. M. M.* DATE: 4/2/08



B-4078 PHASE I DETAIL

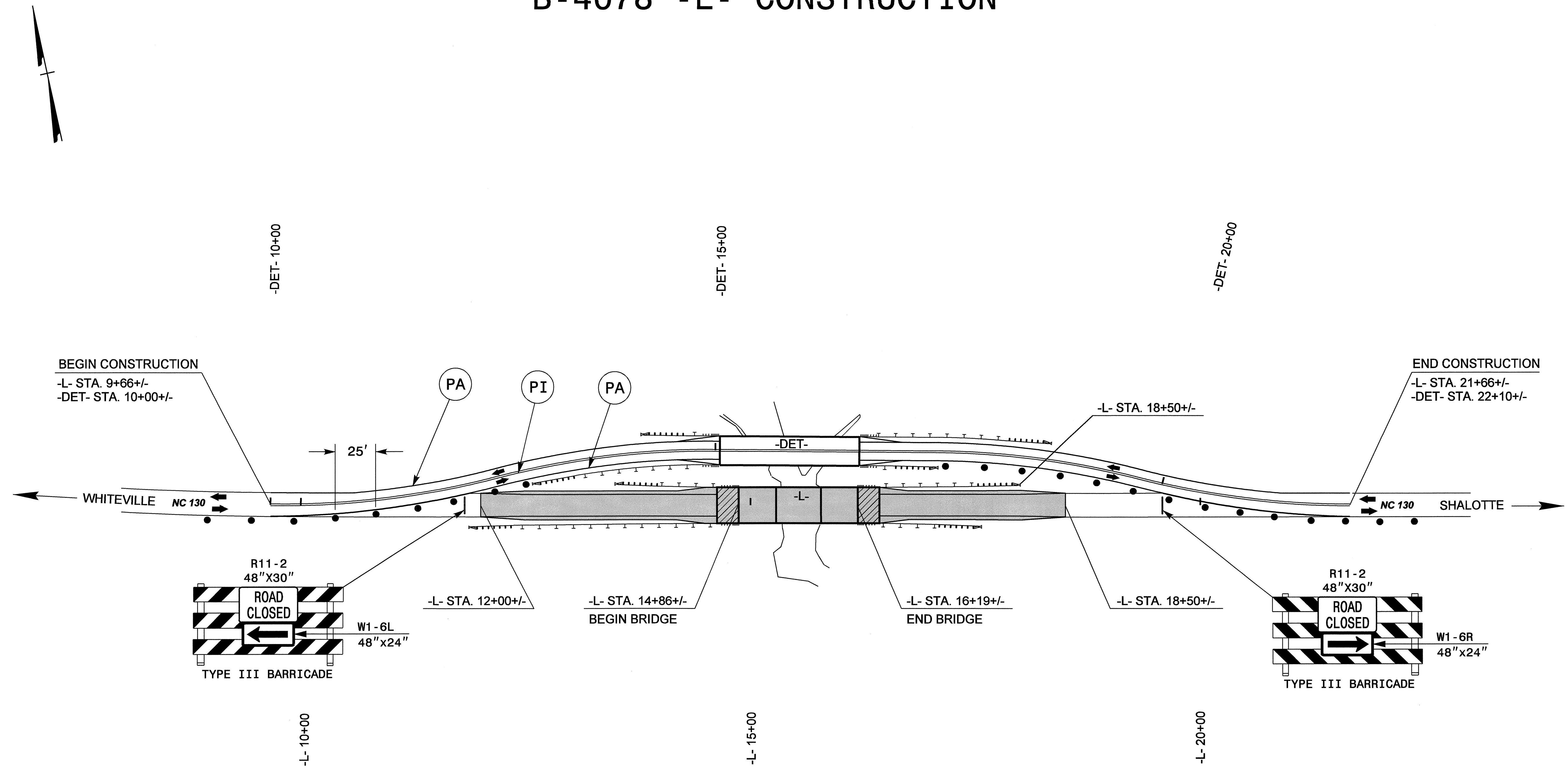
SCALE: NONE
DATE: 5-08
DWG. BY: MDS
DESIGN BY: MDS
REVIEWED BY: CBH



REVISIONS	

30-MAY-2008 14:44
\\DOT\DFSROOT\Proj\TIP\Projects-B\B4077\TrafficControl\Top\B4077-B4078_Tc_TCP08.dgn
dstokes AT WZTC224243

B-4078 - L - CONSTRUCTION

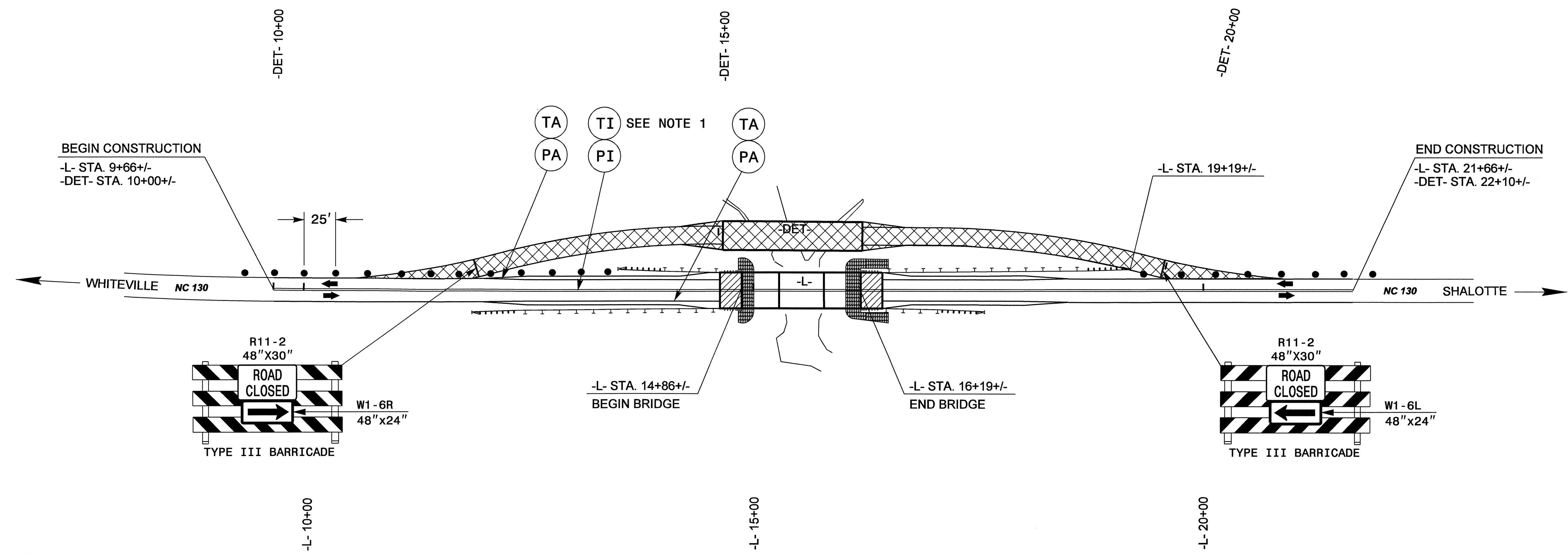
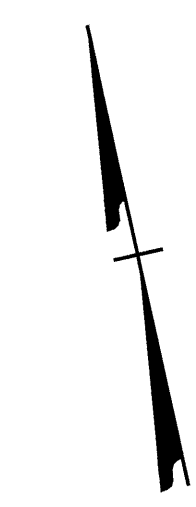


SEE SHEET TCP-7 FOR PAVEMENT MARKING SCHEDULE

APPROVED: <i>M. McFarland</i> DATE: 07/10/08 	B-4078 PHASE II DETAIL			REVISIONS						
	SCALE:	NONE		<table border="1"> <tr><td> </td><td> </td></tr> <tr><td> </td><td> </td></tr> <tr><td> </td><td> </td></tr> </table>						
DATE:	5-08									
DWG. BY:	MDS									
DESIGN BY:	MDS									
REVIEWED BY:	CBH									

03-JUN-2008 08:26 C:\nc\proj\proj\projects\b\B4077\TrafficControl\TCP\B4077-B4078-TC-TCP09.dgn
 dstokas AT WZ 10224243

B-4078 -DET- REMOVAL AND -L- COMPLETION



NOTES:

- IF PASSING/NO-PASSING LANE PAVEMENT MARKINGS ARE TO BE INSTALLED INSTEAD OF THE DOUBLE CENTER PAVEMENT MARKING SHOWN, THE PASSING/NO-PASSING ZONE SHALL BE DETERMINED BY THE ENGINEER.

SEE SHEET TCP-7 FOR PAVEMENT MARKING SCHEDULE

APPROVED: <i>M. M. McDiarmid</i> DATE: 6/2/08		B-4078 PHASE III DETAIL						
	SCALE: NONE							
	DATE: 5-08							
	DWG. BY: MDS							
	DESIGN BY: MDS							
REVIEWED BY: CBH	<table border="1"> <thead> <tr> <th colspan="2">REVISIONS</th> </tr> </thead> <tbody> <tr> <td> </td> <td> </td> </tr> <tr> <td> </td> <td> </td> </tr> </tbody> </table>		REVISIONS					
REVISIONS								

03-JUN-2008 08:28
 \\dot\dfsroot\proj\pprojects-b\B4077\Traffic\TrafficControl\Top\B4077-B4078-Tc-TCP10.dgn
 dsfokes AT MZTC224243

