

TIP PROJECT: B-4078

STATE OF NORTH CAROLINA
DIVISION OF HIGHWAYS

PLAN FOR PROPOSED
HIGHWAY EROSION CONTROL

COLUMBUS COUNTY

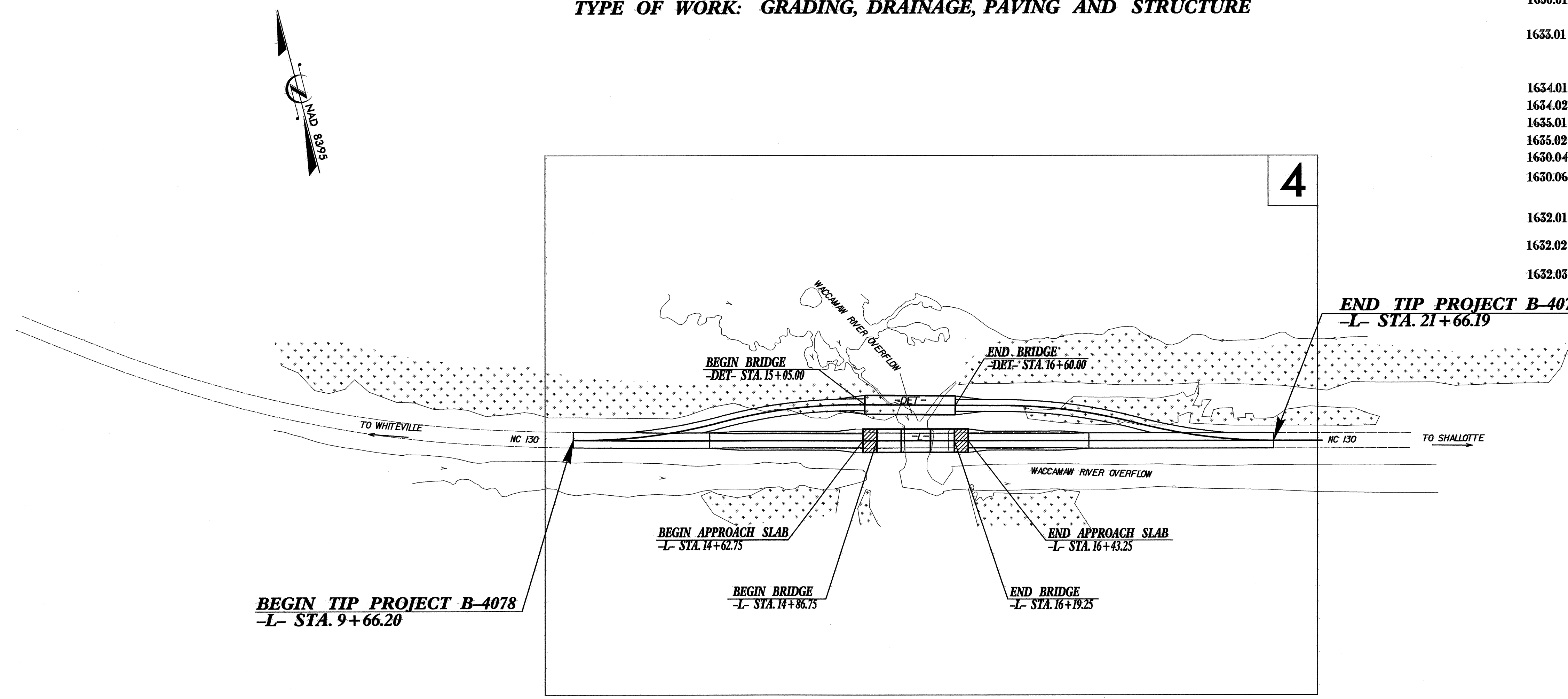
LOCATION: BRIDGE NO. 10 OVER WACCAMAW RIVER OVERFLOW ON NC 130
TYPE OF WORK: GRADING, DRAINAGE, PAVING AND STRUCTURE

STATE	STATE PROJECT REFERENCE NO.	SHEET NO.	TOTAL SHEETS
N.C.	B-4078	EC-1	
STATE PROJ. NO.	F.A. PROJ. NO.	DESCRIPTION	

EROSION AND SEDIMENT CONTROL MEASURES

Std. #	Description	Symbol
1630.03	Temporary Silt Ditch	TSD
1630.05	Temporary Diversion	TD
1605.01	Temporary Silt Fence	
1606.01	Special Sediment Control Fence	△△△
1622.01	Temporary Berms and Slope Drains	—
1630.01	Riser Basin	⊕
	Silt Basin Type B	▨
1633.01	Temporary Rock Silt Check Type-A	⊗
	Temporary Rock Silt Check Type-B	▶
	Wattle	⌒
1634.01	Temporary Rock Sediment Dam Type-A	⊞
1634.02	Temporary Rock Sediment Dam Type-B	⊞
1635.01	Rock Pipe Inlet Sediment Trap Type-A	⊞
1635.02	Rock Pipe Inlet Sediment Trap Type-B	⊞
1630.04	Stilling Basin	⊞
1630.06	Special Stilling Basin	⊞
	Rock Inlet Sediment Trap:	
1632.01	Type A	A
1632.02	Type B	B
1632.03	Type C	C
	Skimmer Basin	⊞
	Tiered Skimmer Basin	⊞
	Infiltration Basin	⊞

**THIS PROJECT CONTAINS
EROSION CONTROL PLANS
FOR CLEARING AND
GRUBBING PHASE OF
CONSTRUCTION.**



GRAPHIC SCALE

0
PLANS

0
PROFILE (HORIZONTAL)

0
PROFILE (VERTICAL)

ROADSIDE ENVIRONMENTAL UNIT
DIVISION OF HIGHWAYS
STATE OF NORTH CAROLINA

Prepared in the Office of:
ROADSIDE ENVIRONMENTAL UNIT
1 South Wilmington St.
Raleigh, NC 27611

2006 STANDARD SPECIFICATIONS

Roadway Standard Drawings

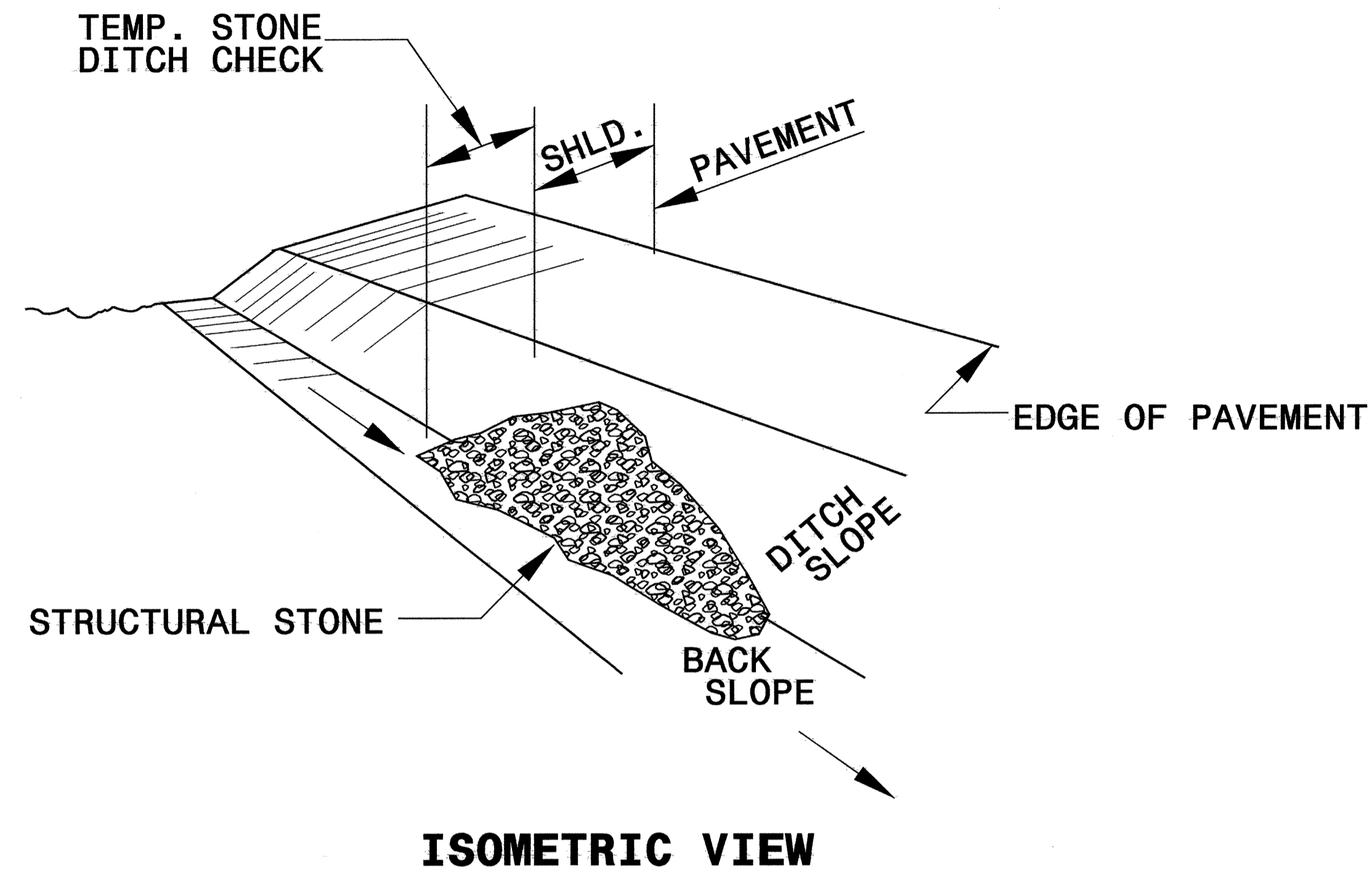
The following roadway english standards as appear in "Roadway Standard Drawings"- Roadway Design Unit - N. C. Department of Transportation - Raleigh, N. C., dated July 18, 2006 and the latest revision thereto are applicable to this project and by reference hereby are considered a part of these plans.

1605.01 Temporary Silt Fence	1632.03 Rock Inlet Sediment Trap Type C
1606.01 Special Sediment Control Fence	1633.01 Temporary Rock Silt Check Type A
1607.01 Gravel Construction Entrance	1634.02 Temporary Rock Sediment Dam Type B
1622.01 Temporary Berms and Slope Drains	
1630.05 Temporary Diversion	

I:\MAY-2006\B-4078\Roadside Environmental\details\B-4078_rdu_sah.dgn
Project: B-4078 Environmental\details\B-4078_rdu_sah.dgn
Sheet: EC-1
Date: 5/18/06

PROJECT REFERENCE NO. B-4078	SHEET NO. EC-2
RW SHEET NO.	
ROADWAY DESIGN ENGINEER	HYDRAULICS ENGINEER

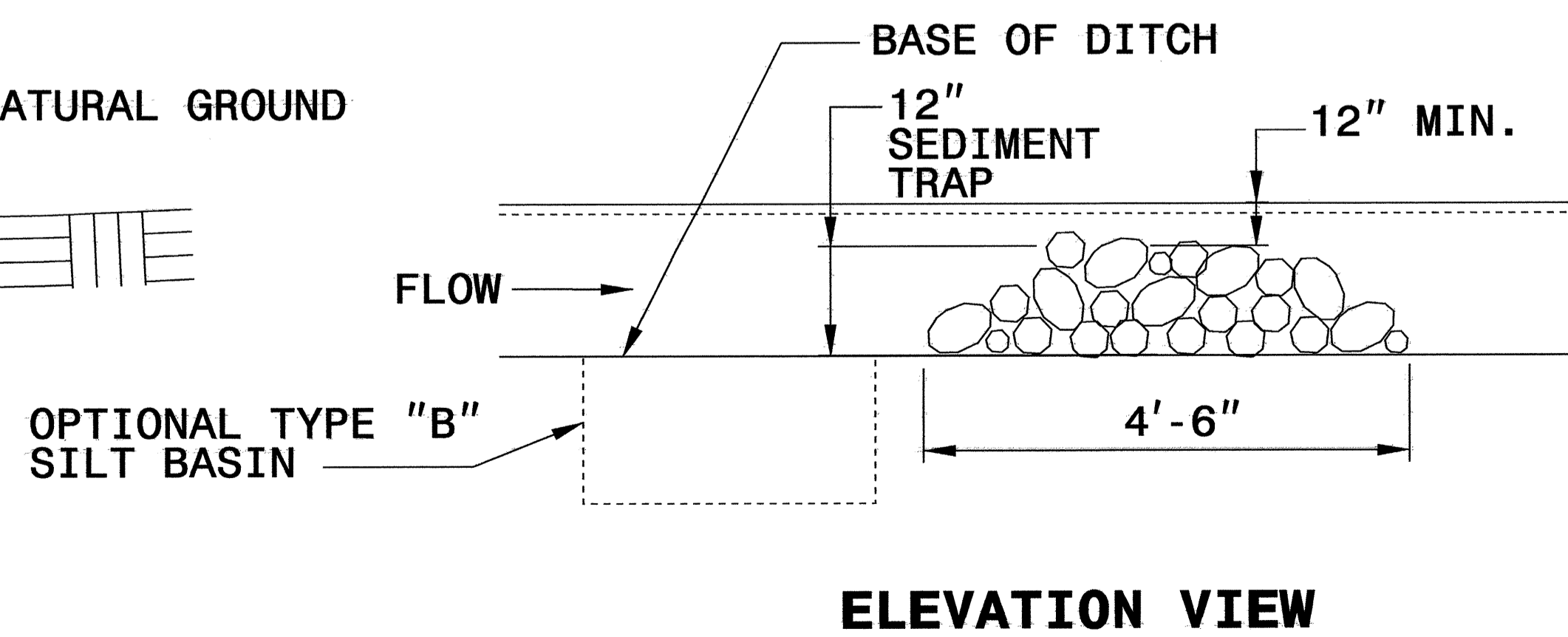
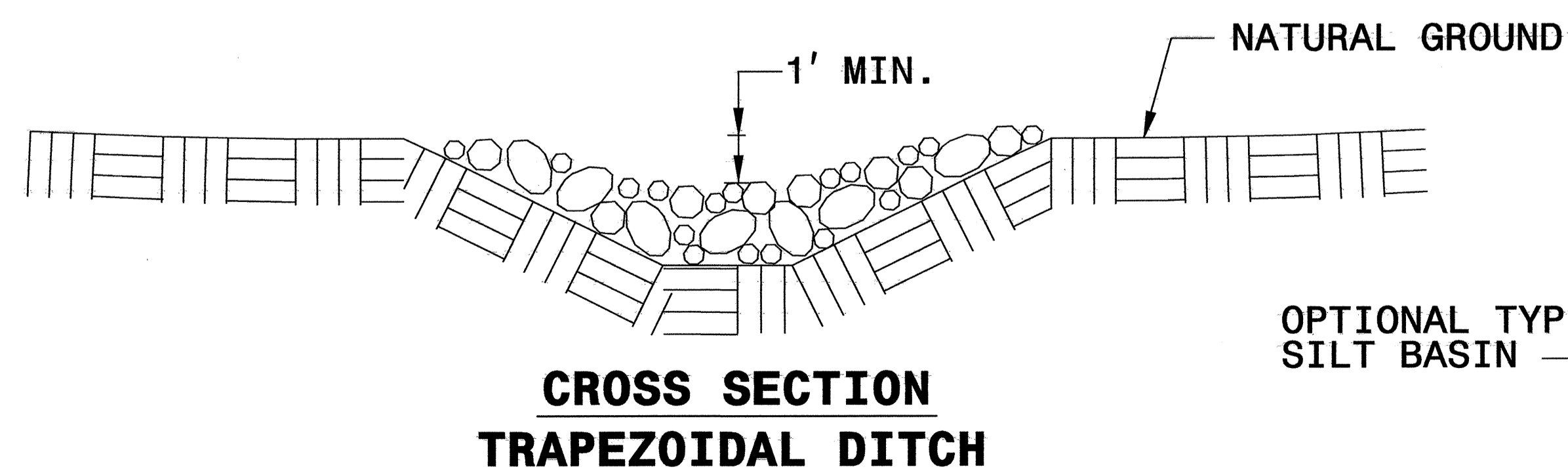
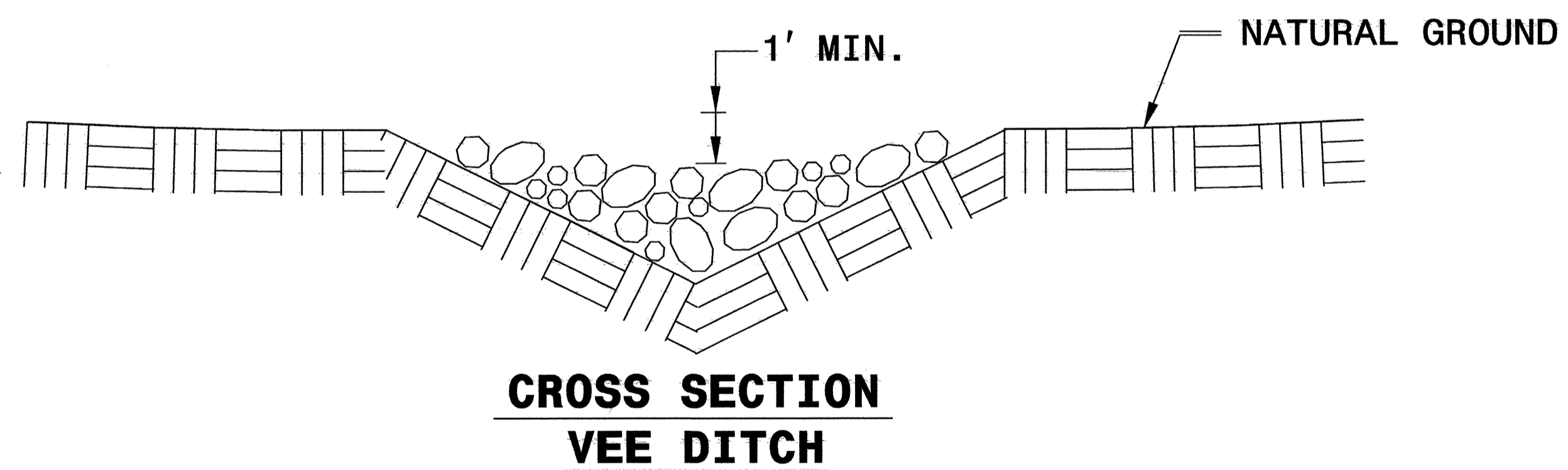
TEMPORARY ROCK SILT CHECK TYPE 'B' DETAIL



NOTES:

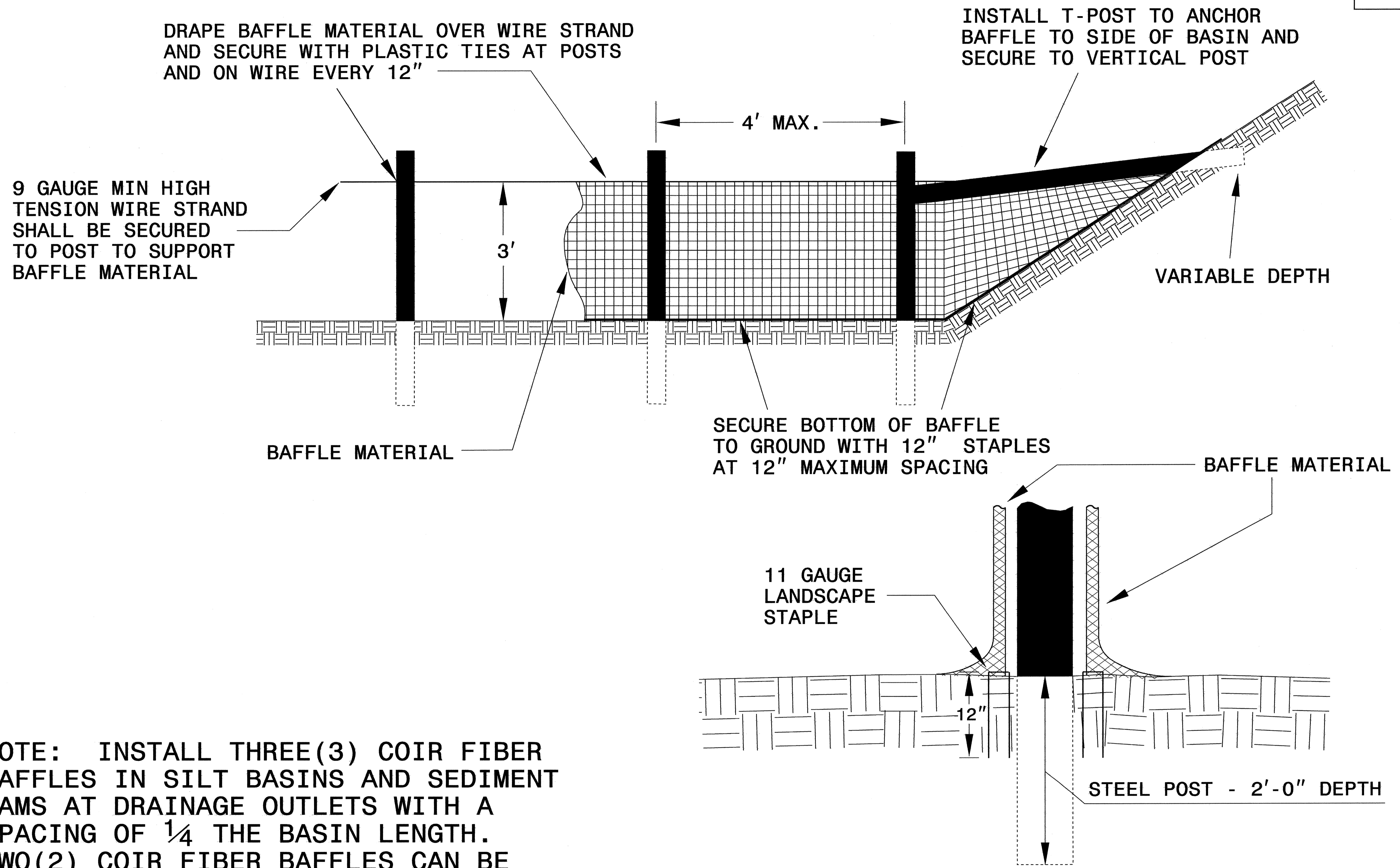
USE CLASS 'B' EROSION CONTROL STONE FOR STRUCTURAL STONE.

THE ENGINEER MAY DIRECT THE OPTION OF CLASS "A" STONE FOR SITES HAVING LESS THAN ONE (1) ACRE DRAINAGE AREA AND A DITCH GRADE LESS THAN 3%.



PROJECT REFERENCE NO. B-4078	SHEET NO. EC-2A
RW SHEET NO.	
ROADWAY DESIGN ENGINEER	HYDRAULICS ENGINEER

COIR FIBER BAFFLE DETAIL



NOTE: INSTALL THREE(3) COIR FIBER BAFFLES IN SILT BASINS AND SEDIMENT DAMS AT DRAINAGE OUTLETS WITH A SPACING OF $\frac{1}{4}$ THE BASIN LENGTH. TWO(2) COIR FIBER BAFFLES CAN BE INSTALLED IN SILT BASINS AND DAMS LESS THAN 20 FT. IN LENGTH WITH A SPACING OF $\frac{1}{3}$ THE BASIN LENGTH.

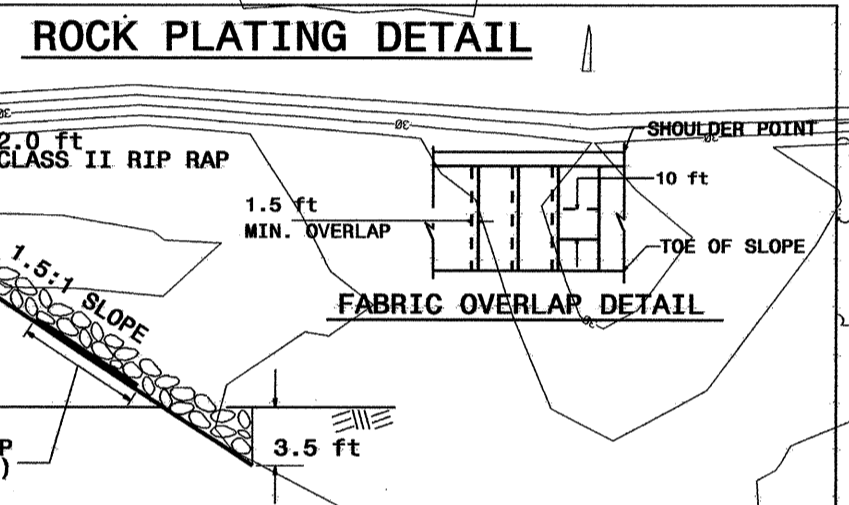
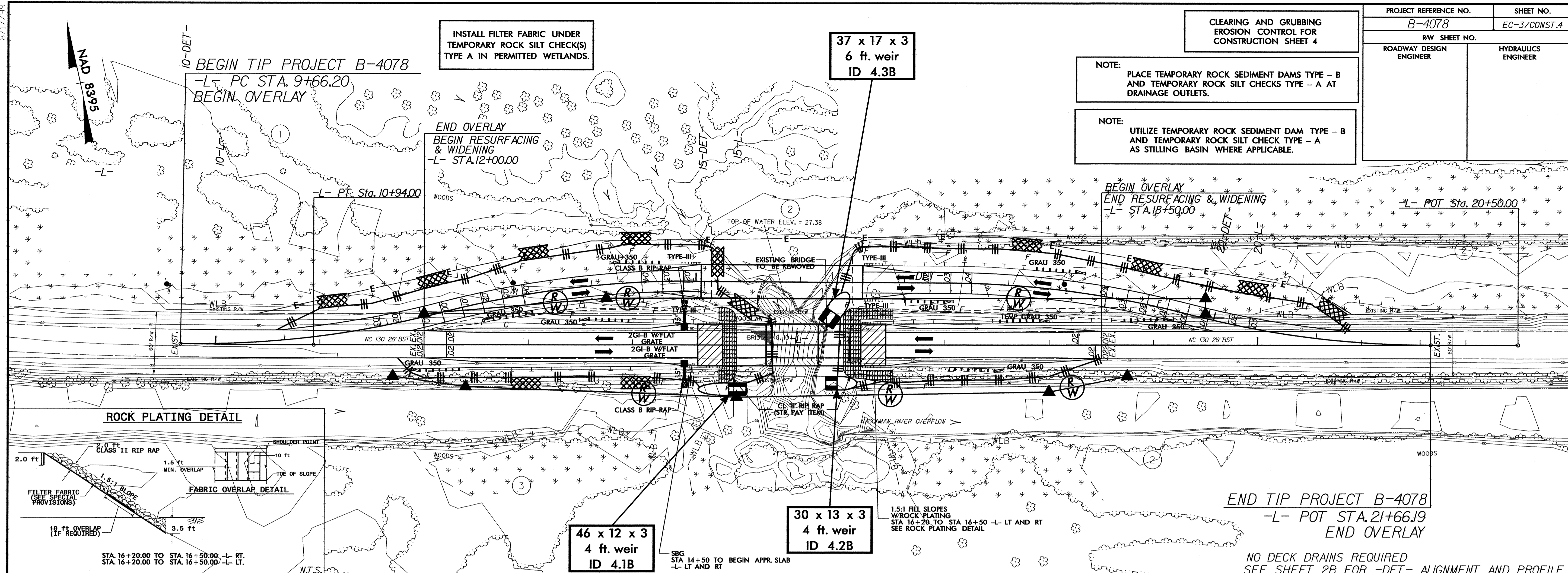
BAFFLE MATERIAL SHALL BE SECURED TO THE BOTTOM AND SIDES OF BASIN USING 12" LANDSCAPE STAPLES

PROJECT REFERENCE NO.	SHEET NO.
B-4078	EC-3/CONST.4
RW SHEET NO.	
ROADWAY DESIGN ENGINEER	HYDRAULICS ENGINEER

CLEARING AND GRUBBING
EROSION CONTROL FOR
CONSTRUCTION SHEET 4

NOTE:
PLACE TEMPORARY ROCK SEDIMENT DAMS TYPE - B
AND TEMPORARY ROCK SILT CHECKS TYPE - A AT
DRAINAGE OUTLETS.

NOTE:
UTILIZE TEMPORARY ROCK SEDIMENT DAM TYPE - B
AND TEMPORARY ROCK SILT CHECK TYPE - A
AS STILLING BASIN WHERE APPLICABLE.

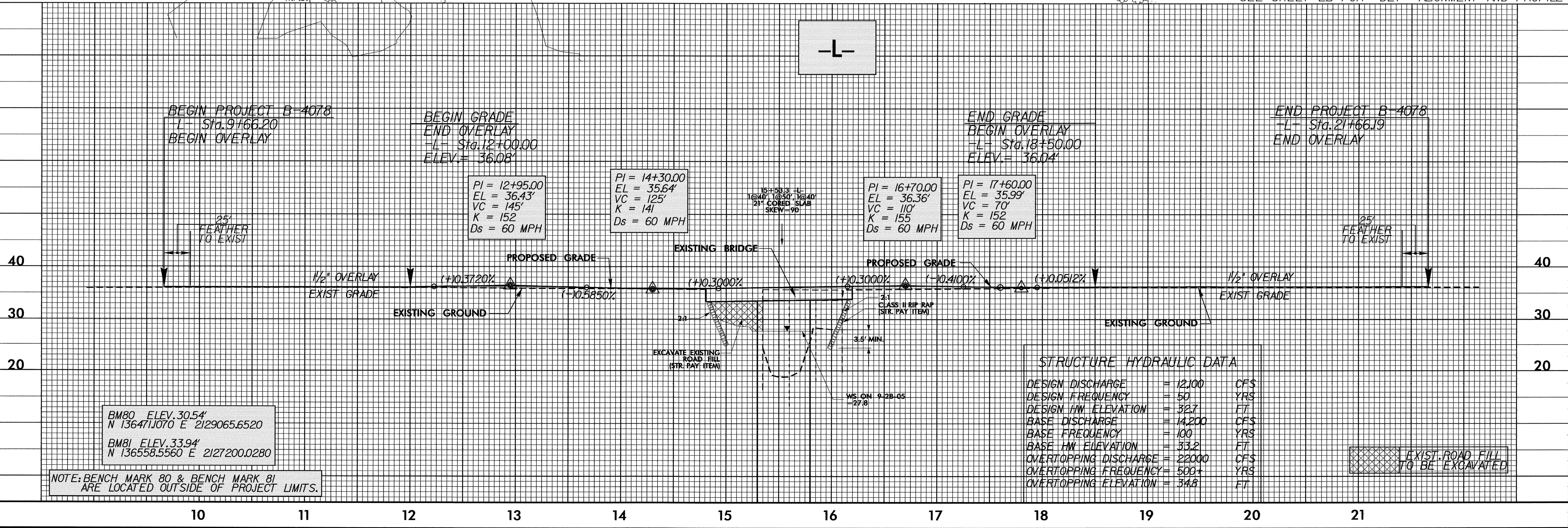


46 x 12 x 3
4 ft. weir
ID 4.1B

30 x 13 x 3
4 ft. weir
ID 4.2B

END TIP PROJECT B-4078
-L- POT STA. 21+66.19
END OVERLAY

NO DECK DRAINS REQUIRED
SEE SHEET 2B FOR -DET- ALIGNMENT AND PROFILE

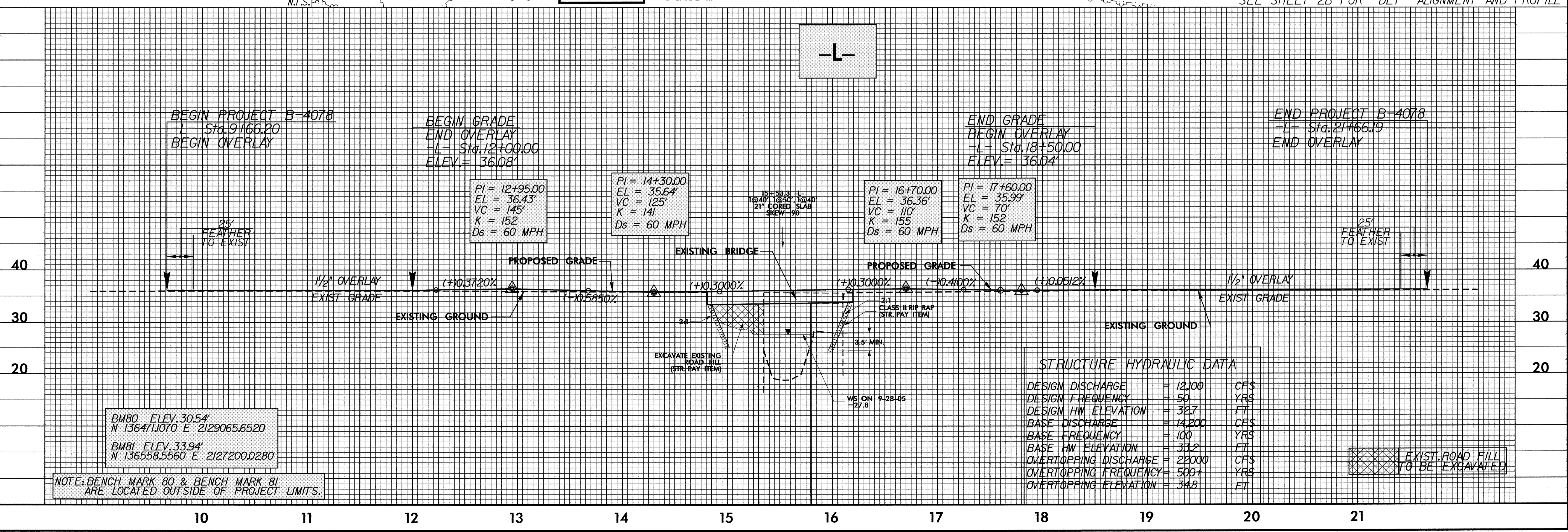
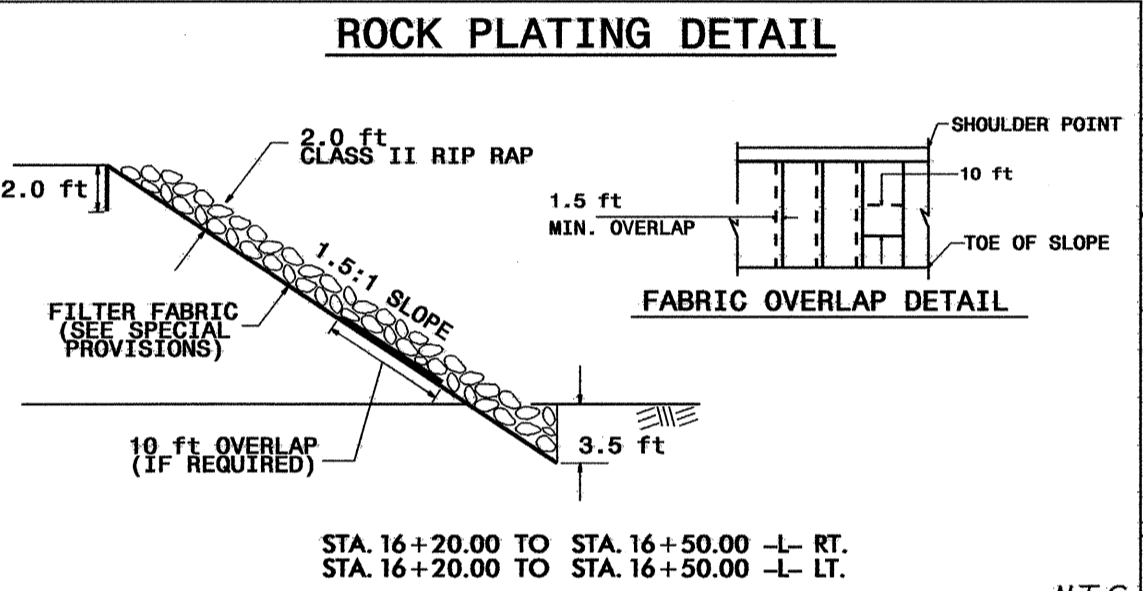
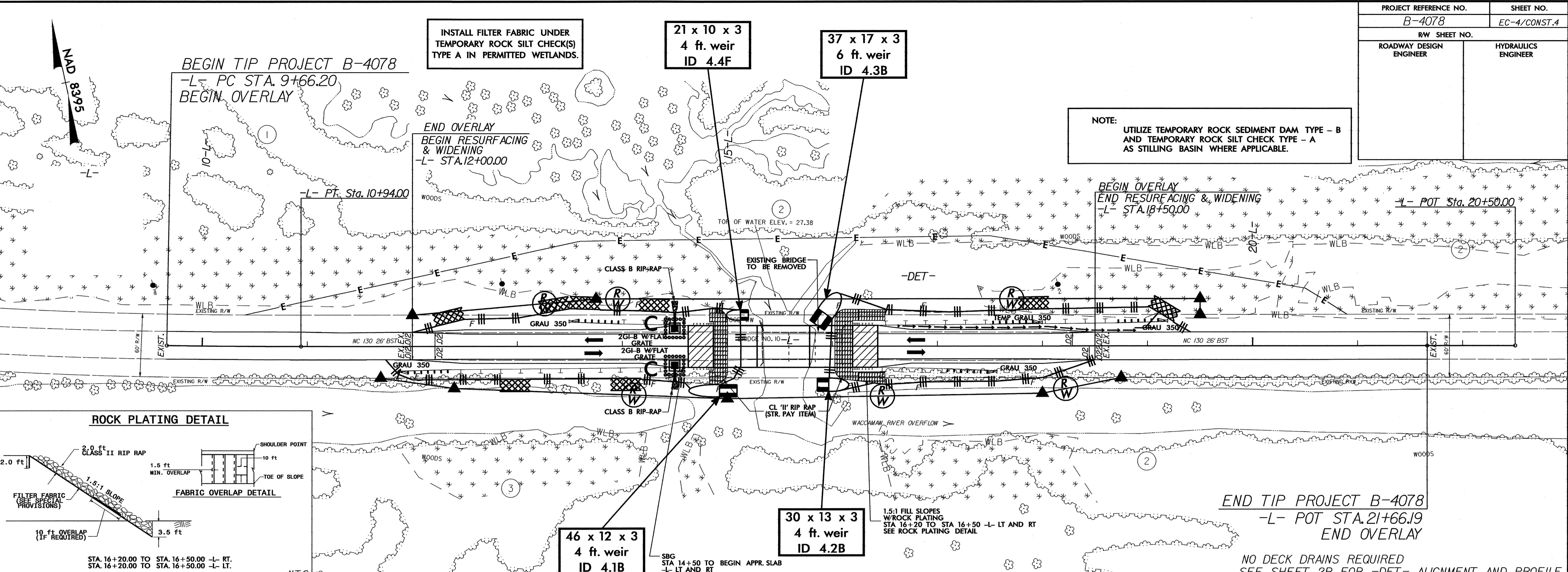


BM80 ELEV. 30.54'
N 136471.070 E 2129065.6520
BM81 ELEV. 33.94'
N 136558.5560 E 2127200.0280

NOTE: BENCH MARK 80 & BENCH MARK 81
ARE LOCATED OUTSIDE OF PROJECT LIMITS.

EXIST. ROAD FILL
TO BE EXCAVATED

8/17/99



15-MAY-2008 13:49
G:\tjppro\ec-4-b-4078\environmental\design\b4078_rdy_psh04.dgn
15-MAY-2008 13:49
G:\tjppro\ec-4-b-4078\environmental\design\b4078_rdy_psh04.dgn

BM80 ELEV. 30.54
N 136471.070 E 2129065.6520
BM81 ELEV. 33.94
N 136558.5560 E 2127200.0280

NOTE: BENCH MARK 80 & BENCH MARK 81 ARE LOCATED OUTSIDE OF PROJECT LIMITS.

8/17/99

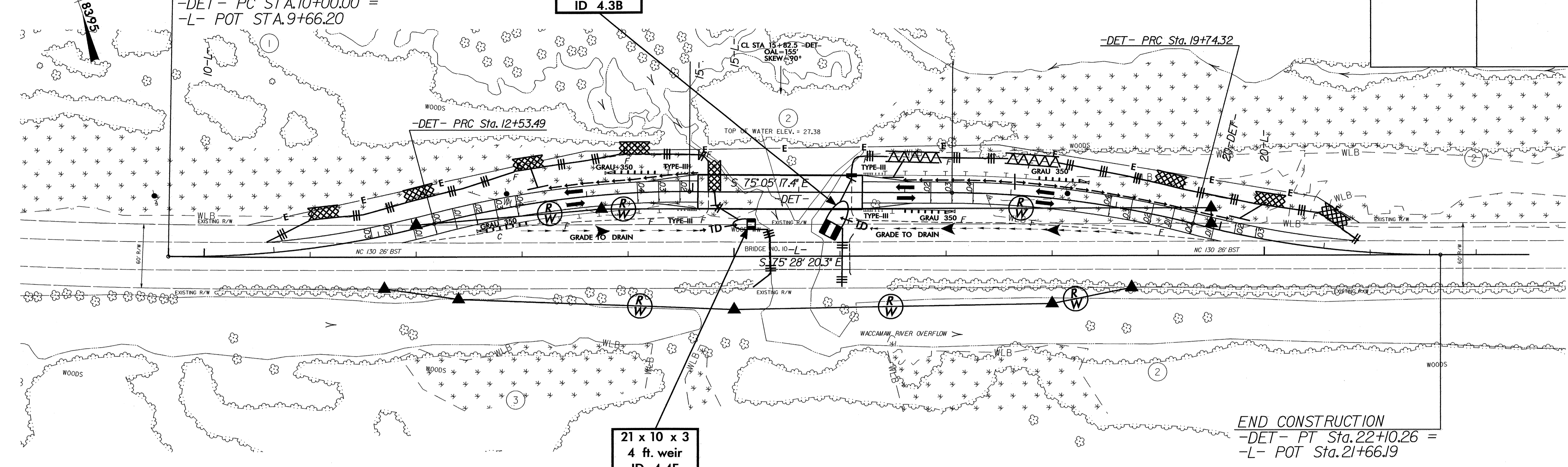
15-MAY-2008 13:49
g:\t\pp\o\ec\ss-b_b4078\envr\environmental\design\b4078_rdy_psh02.dgn
chico

PROJECT REFERENCE NO.	SHEET NO.
B-4078	EC-5/CONST.2B
RW SHEET NO.	
ROADWAY DESIGN ENGINEER	HYDRAULICS ENGINEER

DETOUR

NOTE:
UTILIZE TEMPORARY ROCK SEDIMENT DAM TYPE - B
AND TEMPORARY ROCK SILT CHECK TYPE - A
AS STILLING BASIN WHERE APPLICABLE.

INSTALL FILTER FABRIC UNDER
TEMPORARY ROCK SILT CHECK(S)
TYPE A IN PERMITTED WETLANDS.



SEE SHEET 4 FOR -L- ALIGNMENT AND PROFILE

