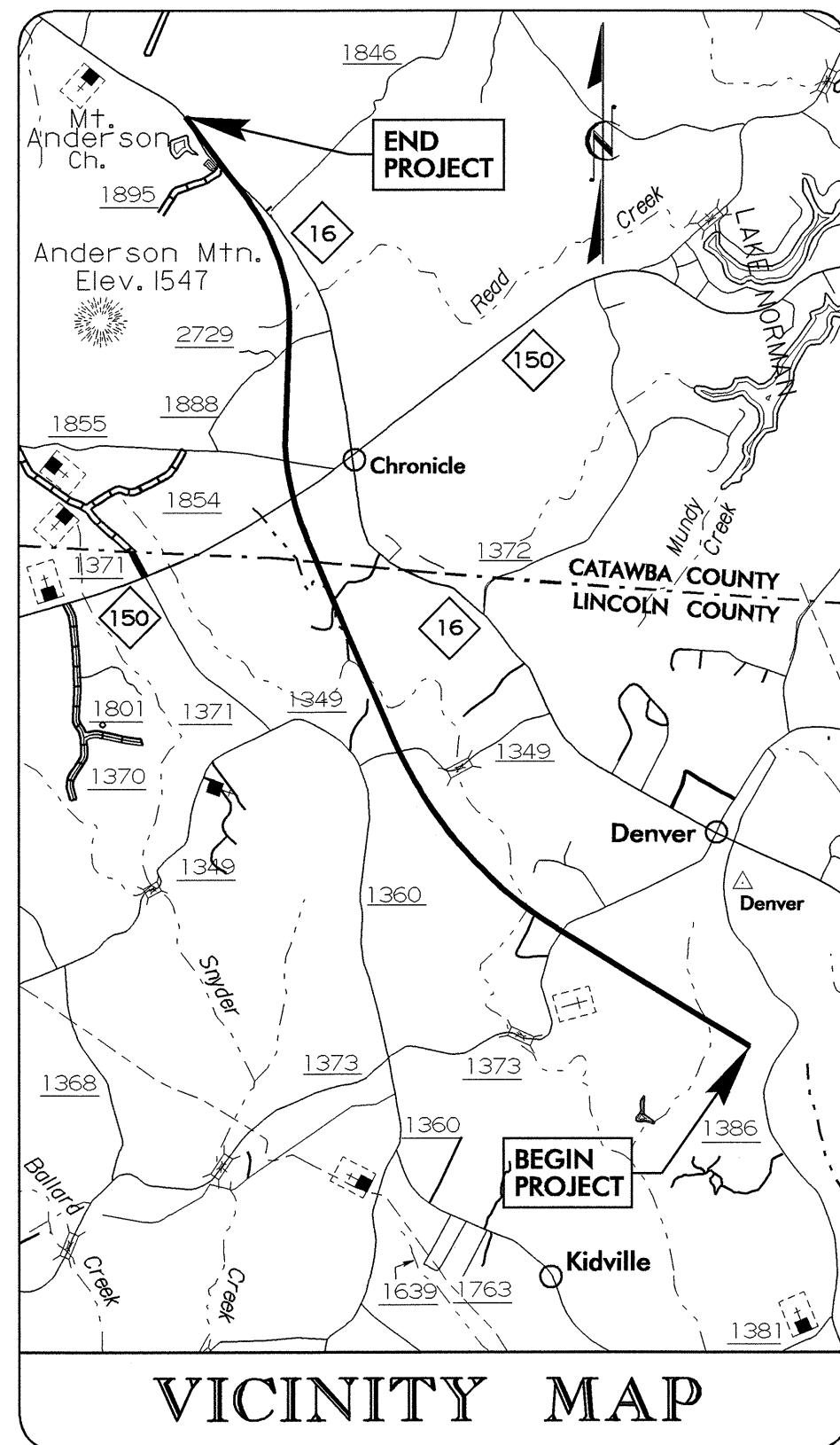


TIP: R-2206BA & CA

See Sheet 1-A For Index of Sheets
See Sheet 1-B For Conventional Symbols



VICINITY MAP

STATE OF NORTH CAROLINA
DIVISION OF HIGHWAYS

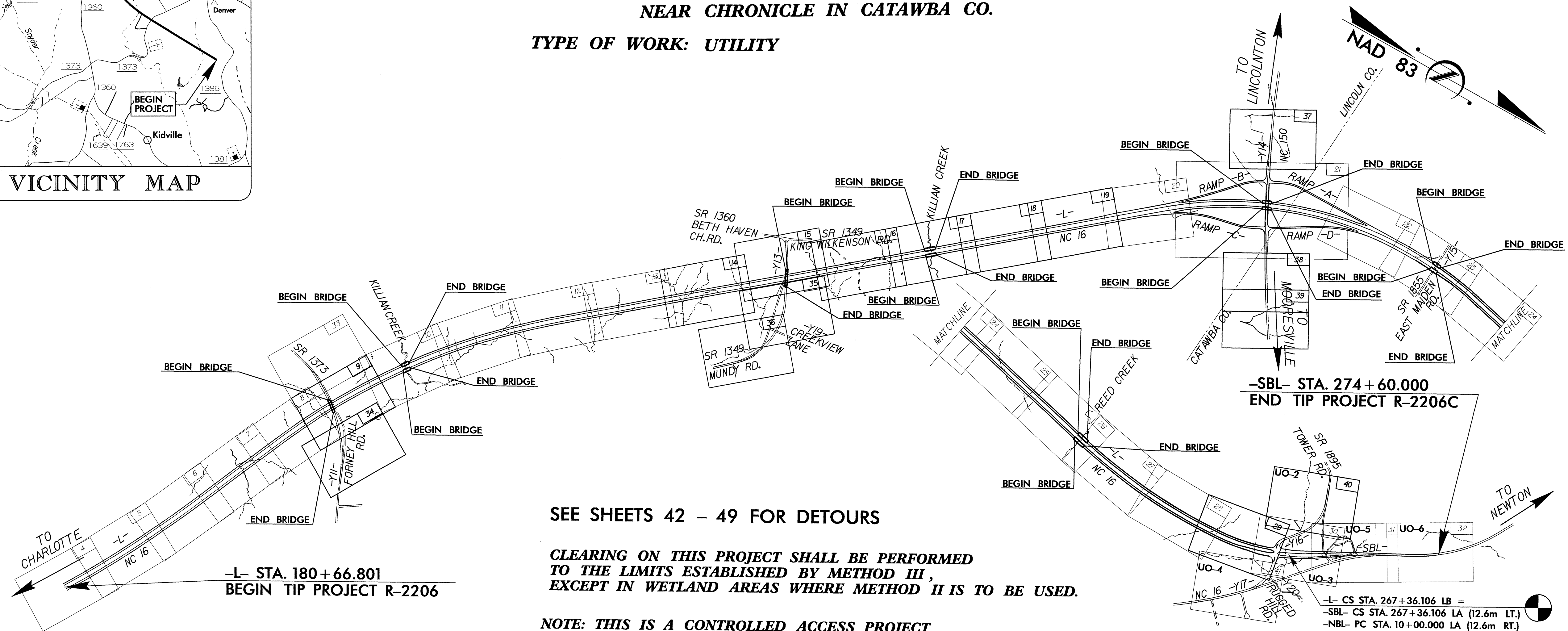
**UTILITIES BY OTHERS PLANS
LINCOLN & CATAWBA COUNTIES**

LOCATION: NC 16 FROM NORTH OF SR 1386 IN
LINCOLN CO. TO NORTH OF SR 1895
NEAR CHRONICLE IN CATAWBA CO.

TYPE OF WORK: UTILITY

METRIC
ALL DIMENSIONS IN
THESE PLANS ARE IN METERS
AND/OR MILLIMETERS
UNLESS OTHERWISE SHOWN

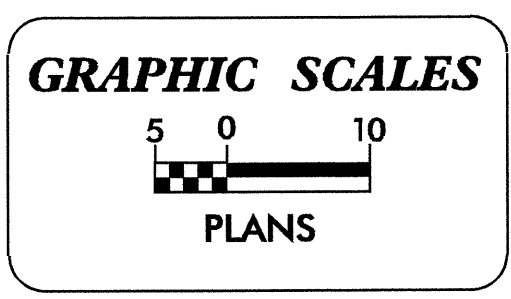
T.I.P. NO.	SHEET NO.
R-2206BA & CA	UO-1



SEE SHEETS 42 - 49 FOR DETOURS

CLEARING ON THIS PROJECT SHALL BE PERFORMED
TO THE LIMITS ESTABLISHED BY METHOD III,
EXCEPT IN WETLAND AREAS WHERE METHOD II IS TO BE USED.

NOTE: THIS IS A CONTROLLED ACCESS PROJECT
WITH ACCESS LIMITED TO INTERCHANGES.



INDEX OF SHEETS

SHEET NO.	DESCRIPTION
UO-1	TITLE SHEET
UO-2 THRU UO-6	UTILITIES BY OTHERS PLAN SHEETS

UTILITY OWNERS ON PROJECT

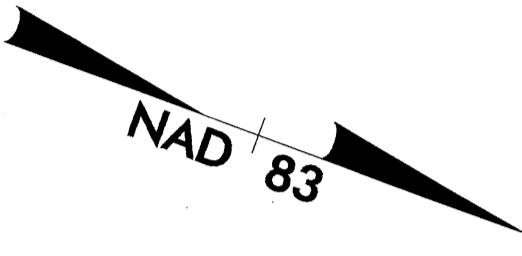
- AT&T OF NC
- RUTHERFORD ELECTRIC MEMBERSHIP CORPORATION.
- CHARTER COMMUNICATIONS

B:\2001\01\001\001.dwg _title_ B2206C-1.dwg

UTILITIES BY OTHERS

NOTE:
ALL PROPOSED UTILITY WORK
SHOWN ON THIS SHEET WILL
BE DONE BY OTHERS

SCALE



MAINTAIN ALL DRIVEWAY CONNECTIONS
DURING CONSTRUCTION

-Y16-
PI Sta. 11+48.636
 $\Delta = 52^\circ 54' 12.1''$ (RT)
L = 161.584
T = 87.068
R = 175.000
e = 0.08
RO = 55m

-Y16- POC STA. 11+60.000
BEGIN GRADING

-Y16- POT STA. 10+00.000

-Y16- PC STA. 10+61.568

MATCHLINE SEE SHEET UO-3
-Y16- STA. 12+00.00

65
CLIFF - BLAKE ASSOC.
DB 1936 PG 1335

65
CLIFF - BLAKE ASSOC.
DB 1936 PG 1335

65
CLIFF - BLAKE ASSOC.
DB 1936 PG 1335

CHARLES WILLIAM JOSEY, JR.
DB 1926 PG 166

WALTER LEE ARMFIELD
DB 1924 PG 218

PAMELA N. GILLELAND
DB 2139 PG 8320

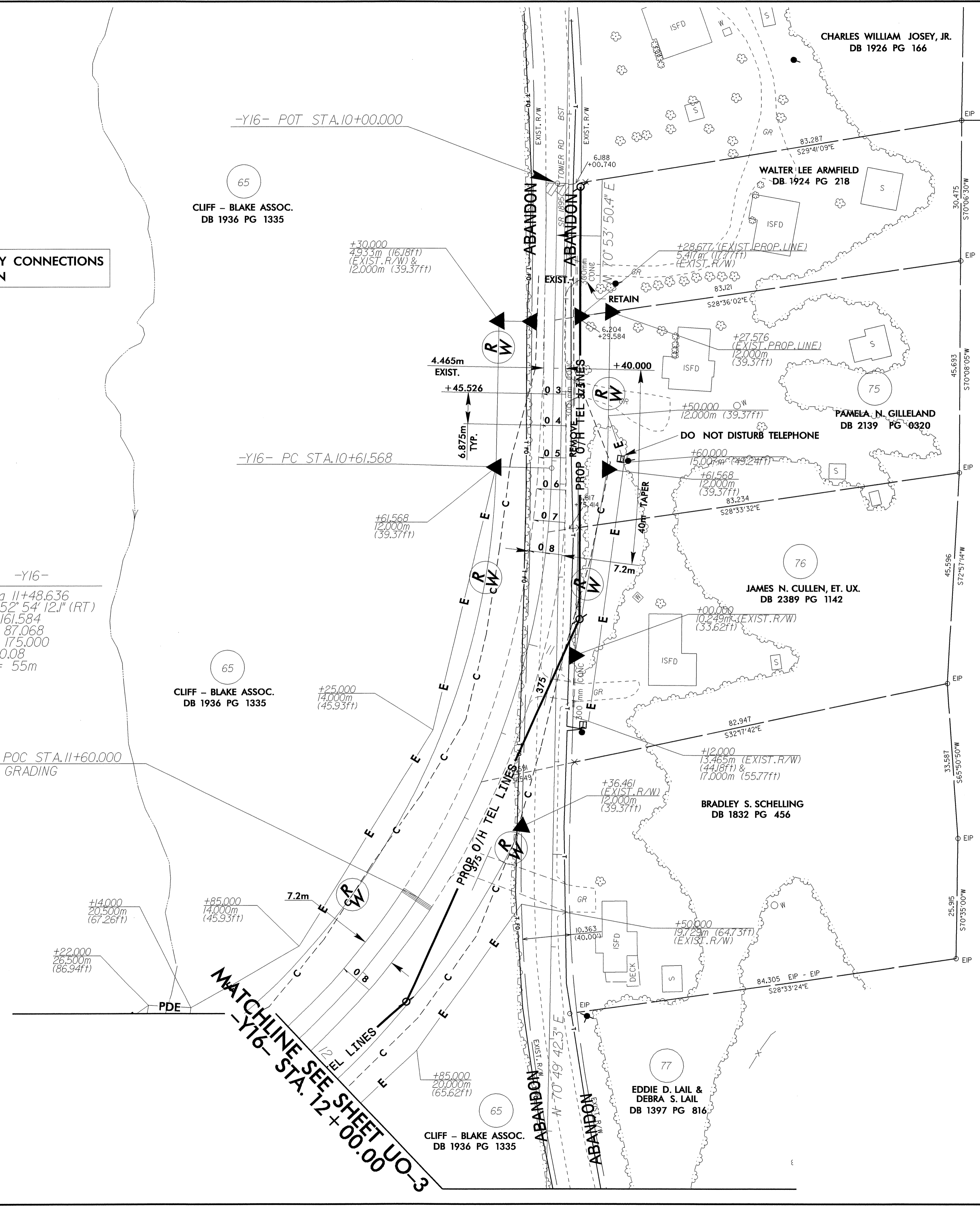
JAMES N. CULLEN, ET. UX.
DB 2389 PG 1142

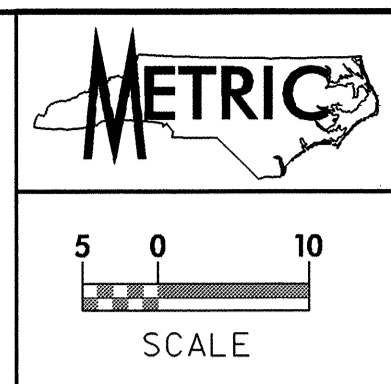
77
EDDIE D. LAIL &
DEBRA S. LAIL
DB 1397 PG 816

BRADLEY S. SCHELLING
DB 1832 PG 456

77
EDDIE D. LAIL &
DEBRA S. LAIL
DB 1397 PG 816

042597
 18-JUN-2008 15:21
 c:\projects\2206ba\2206ba.uo_2\sh_40.dgn





NOTE: ALL PROPOSED UTILITY WORK SHOWN ON THIS SHEET WILL BE DONE BY OTHERS

-L-
Pls Sta 264+18.607
Δs = 0° 54' 59.9"
Δs = 2° 37' 09.5"
Ls = 80.000
LT = 46.432
ST = 33.592

-Y16-
PI Sta 11+48.636
Δ = 52° 54' 12.1" (RT)
L = 161.584
T = 87.068
R = 175.000
e = 0.08
RO = 55m

-SBL-
Pls Sta 267+69.450
Δs = 3° 19' 18.8"
Ls = 100.000
LT = 66.678
ST = 33.344

-NBL-
PI Sta 10+71.600
Δ = 9° 13' 25.5" (LT)
L = 142.890
T = 71.600
R = 887.600
e = 0.06

-Y16- PT STA.13+85.265
-L- POC STA.266+90.268 =
-Y16- POT STA.14+07.660
-Y17- POT STA.10+00.000

MATCHLINE SEE
-L- STA. 266 + 40.000

AMOS BROWN, ET. AL.
DB 2204 PG 1581

-Y17-
PI Sta 11+37.112
Δ = 65° 56' 55.1" (RT)
L = 201.429
T = 113.535
R = 175.000
e = 0.08
RO = 60m

NOTE: SEE SHEET 29 FOR INTERSECTION TRAFFIC DIAGRAM

CLIFF - BLAKE ASSOC.
DB 1936 PG 1335

BERM 'V' DITCH
EST. DDE = ?
(SEE DETAIL ?)

END PROP. W. W. FENCE

PROPOSED W. W. FENCE

ANTHONY L. DRUM
DB 968 PG 165

ANTHONY L. DRUM
DB 968 PG 165

ANTHONY L. DRUM
DB 968 PG 165

TOE PROTECTION
W/CL 'B' RIP RAP
EST. 39 MTONS
FILTER FABRIC
EST. 80 SM
(SEE DETAIL ?)

MATCHLINE SEE SHEET UO-4
-Y17- STA. 10 + 80.000

-Y17- POC STA.10+60.000
END GRADING

1.2m BASE DITCH
W/CL 'B' RIP RAP
@ So = 0.12%
EST. 30 MTONS
FILTER FABRIC
EST. 46 SM
EST. DDE = 10 CM
(SEE DETAIL ?)

HEADWALL
FALSE SUMP
(SEE SHEET ?)

BERM 'V' DITCH
EST. DDE = ?
(SEE DETAIL ?)

450 CSP W/
2 ELBOWS

FALSE SUMP
(SEE DETAIL ?)

END PROP. W. W. FENCE

1.2m SPECIAL CUT BASE DITCH
W/CL 'I' RIP RAP
EST. 246 MTONS
FILTER FABRIC
EST. 386 SM
SEE DITCH GRADE
(SEE DETAIL ?)

END PROP. W. W. FENCE

PROPOSED W. W. FENCE

PROPOSED W. W. FENCE

ANTHONY L. DRUM
DB 968 PG 165

ANTHONY L. DRUM
DB 968 PG 165

ANTHONY L. DRUM
DB 968 PG 165

ANTHONY L. DRUM
DB 968 PG 165

ANTHONY L. DRUM
DB 968 PG 165

ANTHONY L. DRUM
DB 968 PG 165

ANTHONY L. DRUM
DB 968 PG 165

ANTHONY L. DRUM
DB 968 PG 165

ANTHONY L. DRUM
DB 968 PG 165

ANTHONY L. DRUM
DB 968 PG 165

ANTHONY L. DRUM
DB 968 PG 165

ANTHONY L. DRUM
DB 968 PG 165

SPECIAL CUT DITCH
W/CL 'B' RIP RAP
EST. 24 MTONS
FILTER FABRIC
EST. 49 SM
SEE DITCH GRADE
(SEE DETAIL ?)

HEADWALL
FALSE SUMP
(SEE SHEET ?)

BERM 'V' DITCH
EST. DDE = ?
(SEE DETAIL ?)

450 CSP W/
2 ELBOWS

FALSE SUMP
(SEE DETAIL ?)

END PROP. W. W. FENCE

1.2m SPECIAL CUT BASE DITCH
W/CL 'I' RIP RAP
EST. 246 MTONS
FILTER FABRIC
EST. 386 SM
SEE DITCH GRADE
(SEE DETAIL ?)

END PROP. W. W. FENCE

PROPOSED W. W. FENCE

PROPOSED W. W. FENCE

ANTHONY L. DRUM
DB 968 PG 165

ANTHONY L. DRUM
DB 968 PG 165

ANTHONY L. DRUM
DB 968 PG 165

ANTHONY L. DRUM
DB 968 PG 165

ANTHONY L. DRUM
DB 968 PG 165

ANTHONY L. DRUM
DB 968 PG 165

ANTHONY L. DRUM
DB 968 PG 165

ANTHONY L. DRUM
DB 968 PG 165

ANTHONY L. DRUM
DB 968 PG 165

ANTHONY L. DRUM
DB 968 PG 165

ANTHONY L. DRUM
DB 968 PG 165

ANTHONY L. DRUM
DB 968 PG 165

SPECIAL CUT DITCH
W/CL 'B' RIP RAP
EST. 24 MTONS
FILTER FABRIC
EST. 49 SM
SEE DITCH GRADE
(SEE DETAIL ?)

HEADWALL
FALSE SUMP
(SEE SHEET ?)

BERM 'V' DITCH
EST. DDE = ?
(SEE DETAIL ?)

450 CSP W/
2 ELBOWS

FALSE SUMP
(SEE DETAIL ?)

END PROP. W. W. FENCE

1.2m SPECIAL CUT BASE DITCH
W/CL 'I' RIP RAP
EST. 246 MTONS
FILTER FABRIC
EST. 386 SM
SEE DITCH GRADE
(SEE DETAIL ?)

END PROP. W. W. FENCE

PROPOSED W. W. FENCE

PROPOSED W. W. FENCE

ANTHONY L. DRUM
DB 968 PG 165

ANTHONY L. DRUM
DB 968 PG 165

ANTHONY L. DRUM
DB 968 PG 165

ANTHONY L. DRUM
DB 968 PG 165

ANTHONY L. DRUM
DB 968 PG 165

ANTHONY L. DRUM
DB 968 PG 165

ANTHONY L. DRUM
DB 968 PG 165

ANTHONY L. DRUM
DB 968 PG 165

ANTHONY L. DRUM
DB 968 PG 165

ANTHONY L. DRUM
DB 968 PG 165

ANTHONY L. DRUM
DB 968 PG 165

ANTHONY L. DRUM
DB 968 PG 165

SPECIAL CUT DITCH
W/CL 'B' RIP RAP
EST. 24 MTONS
FILTER FABRIC
EST. 49 SM
SEE DITCH GRADE
(SEE DETAIL ?)

HEADWALL
FALSE SUMP
(SEE SHEET ?)

BERM 'V' DITCH
EST. DDE = ?
(SEE DETAIL ?)

450 CSP W/
2 ELBOWS

FALSE SUMP
(SEE DETAIL ?)

END PROP. W. W. FENCE

1.2m SPECIAL CUT BASE DITCH
W/CL 'I' RIP RAP
EST. 246 MTONS
FILTER FABRIC
EST. 386 SM
SEE DITCH GRADE
(SEE DETAIL ?)

END PROP. W. W. FENCE

PROPOSED W. W. FENCE

PROPOSED W. W. FENCE

ANTHONY L. DRUM
DB 968 PG 165

ANTHONY L. DRUM
DB 968 PG 165

ANTHONY L. DRUM
DB 968 PG 165

ANTHONY L. DRUM
DB 968 PG 165

ANTHONY L. DRUM
DB 968 PG 165

ANTHONY L. DRUM
DB 968 PG 165

ANTHONY L. DRUM
DB 968 PG 165

ANTHONY L. DRUM
DB 968 PG 165

ANTHONY L. DRUM
DB 968 PG 165

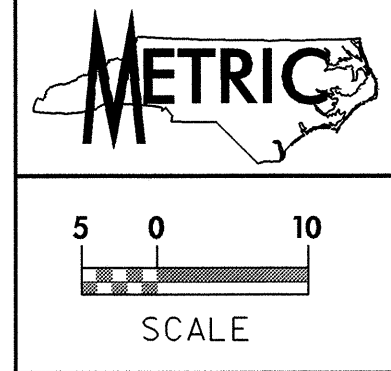
ANTHONY L. DRUM
DB 968 PG 165

ANTHONY L. DRUM
DB 968 PG 165

ANTHONY L. DRUM
DB 968 PG 165

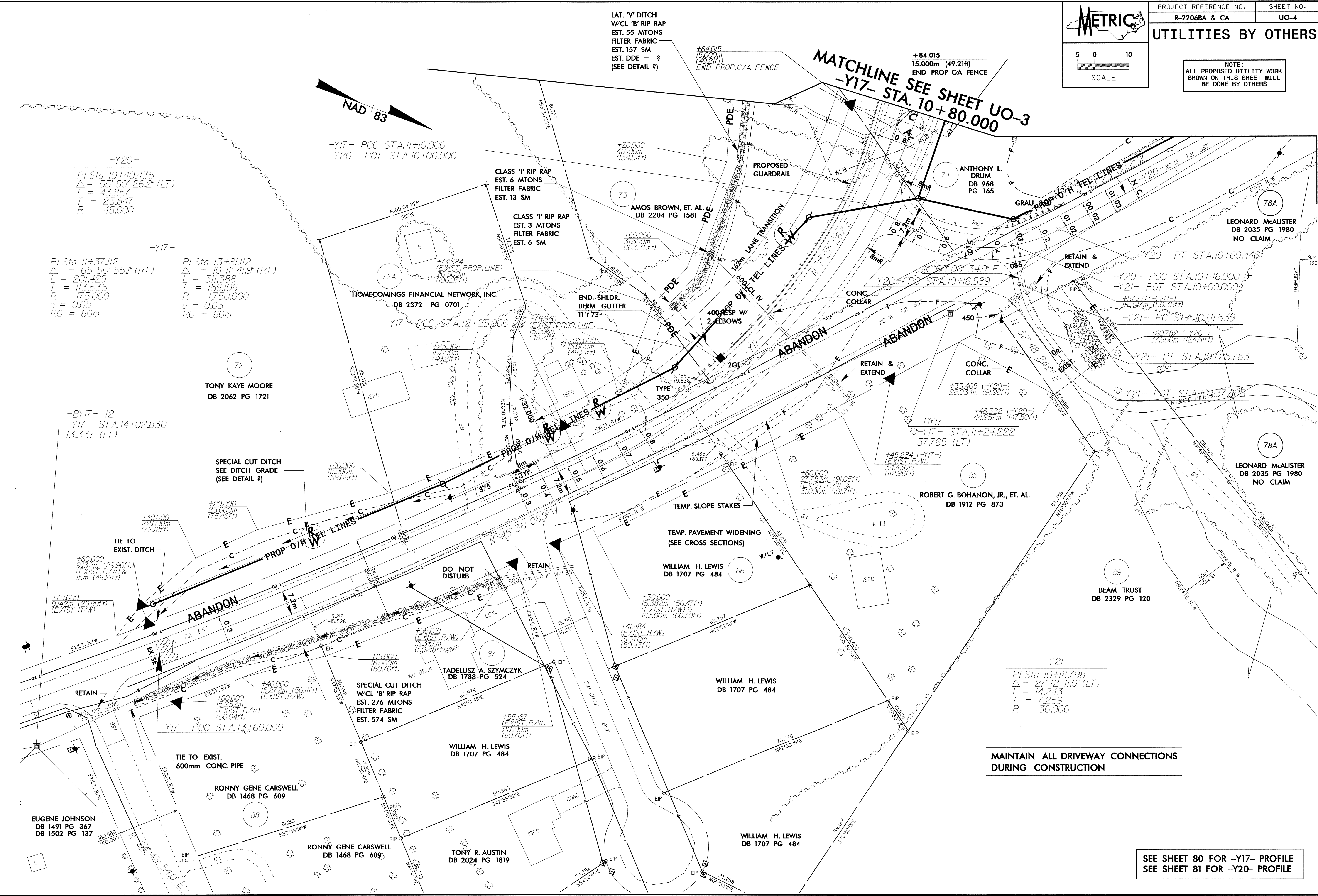
SEE SHEET 65 FOR -L- PROFILE
SEE SHEET 65 FOR -SBL- PROFILE
SEE SHEET 67 FOR -NBL- PROFILE
SEE SHEETS 79 & 80 FOR -Y16- PROFILE
SEE SHEET 80 FOR -Y17- PROFILE
SEE SHEETS 42 & 43 FOR -L- DETOUR
SEE SHEET 68 FOR -LDET- PROFILE

18-JUN-2008 15:24
C:\utilities\work\18-2206ba\uo-3\sh-30.dgn



UTILITIES BY OTHERS

NOTE:
ALL PROPOSED UTILITY WORK
SHOWN ON THIS SHEET WILL
BE DONE BY OTHERS



-Y20-
PI Sta 10+40.435
Δ = 55° 50' 26.2" (LT)
L = 43.857
T = 23.847
R = 45.000

-Y17-
PI Sta 11+37.112
Δ = 65° 56' 55.1" (RT)
L = 201.429
T = 113.535
R = 175.000
e = 0.08
RO = 60m

PI Sta 13+81.112
Δ = 10° 11' 41.9" (RT)
L = 311.388
T = 156.106
R = 175.000
e = 0.03
RO = 60m

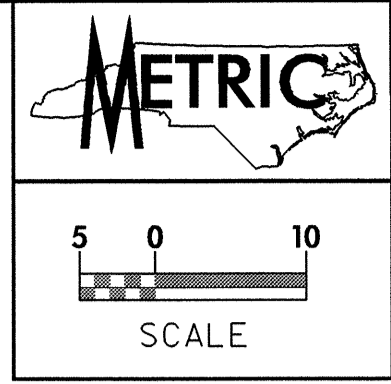
-BY17- 12
-Y17- STA. 14+02.830
13.337 (LT)

-Y21-
PI Sta 10+18.798
Δ = 27° 12' 11.0" (LT)
L = 14.243
T = 7.259
R = 30.000

MAINTAIN ALL DRIVEWAY CONNECTIONS
DURING CONSTRUCTION

SEE SHEET 80 FOR -Y17- PROFILE
SEE SHEET 81 FOR -Y20- PROFILE

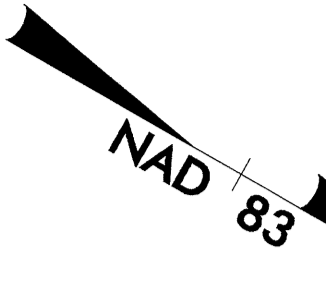
18-JUN-2008 15:24
C:\utilities\work\p2206ba.uo_4psh_41.dgn
C:\utilities\work\p2206ba.uo_4psh_41.dgn



UTILITIES BY OTHERS

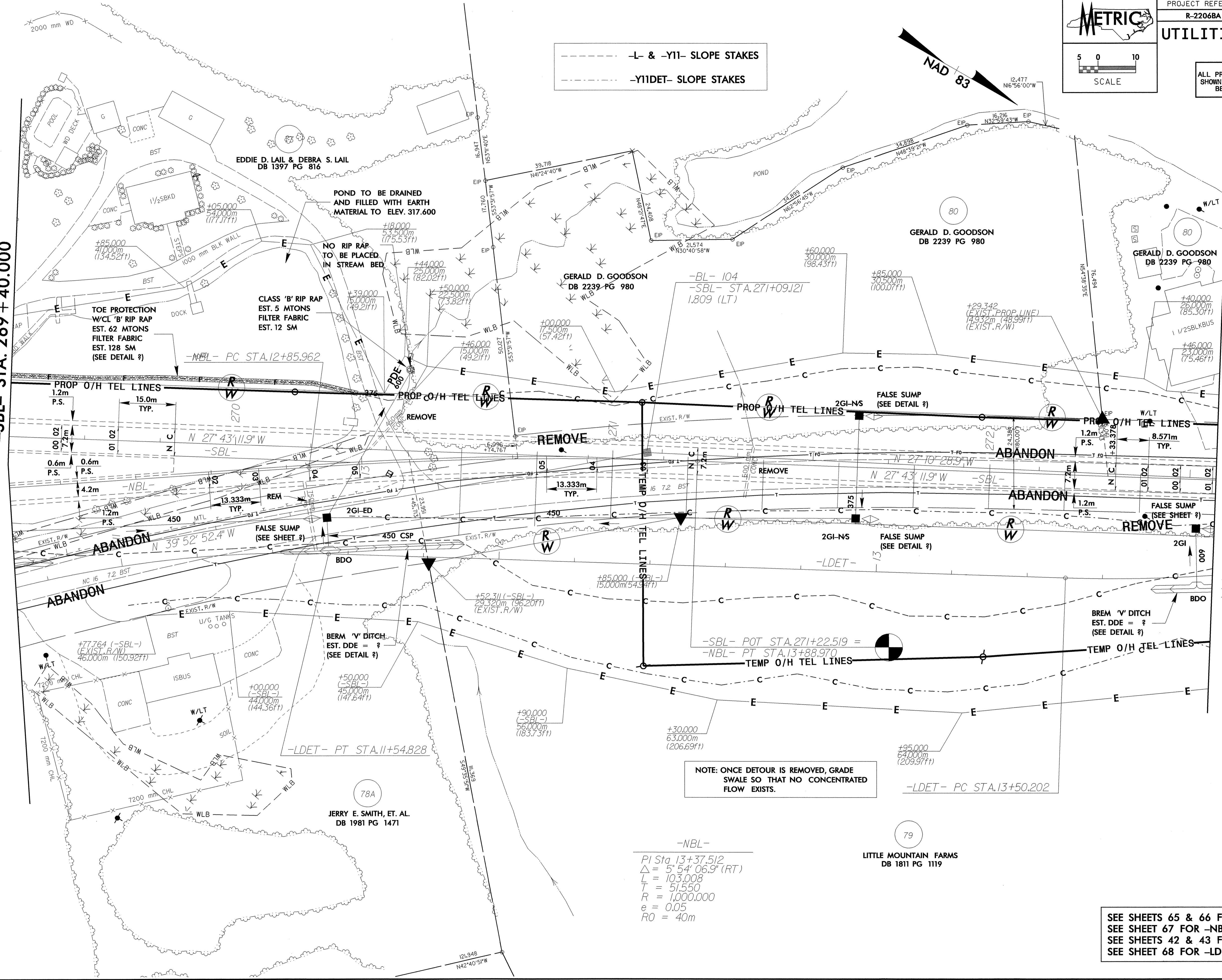
NOTE: ALL PROPOSED UTILITY WORK SHOWN ON THIS SHEET WILL BE DONE BY OTHERS

--- L & -Y11- SLOPE STAKES
 --- Y11DET- SLOPE STAKES



MATCHLINE SEE SHEET UO-3
-SBL- STA. 269 + 40.000

MATCHLINE SEE SHEET UO-6
-SBL- STA. 272 + 60.000



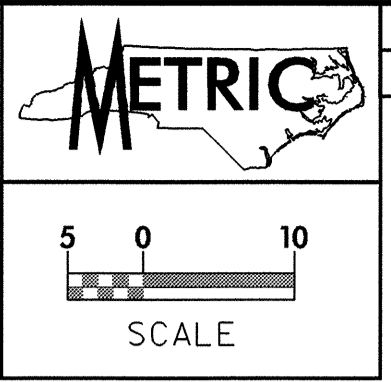
NOTE: ONCE DETOUR IS REMOVED, GRADE SWALE SO THAT NO CONCENTRATED FLOW EXISTS.

-NBL-
 PI Sta. 13+37.512
 $\Delta = 5' 54" 06.9" (RT)$
 $L = 103.008$
 $T = 51.550$
 $R = 1,000.000$
 $e = 0.05$
 $RO = 40m$

79
 LITTLE MOUNTAIN FARMS
 DB 1811 PG 1119

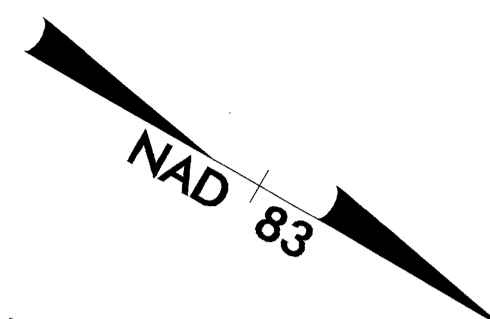
SEE SHEETS 65 & 66 FOR -SBL- PROFILE
 SEE SHEET 67 FOR -NBL- PROFILE
 SEE SHEETS 42 & 43 FOR -L DETOUR
 SEE SHEET 68 FOR -LDET- PROFILE

18-JUN-2008 15:25 c:\projects\2206ba-ca\2206ba-uo-5\sh-31.dgn



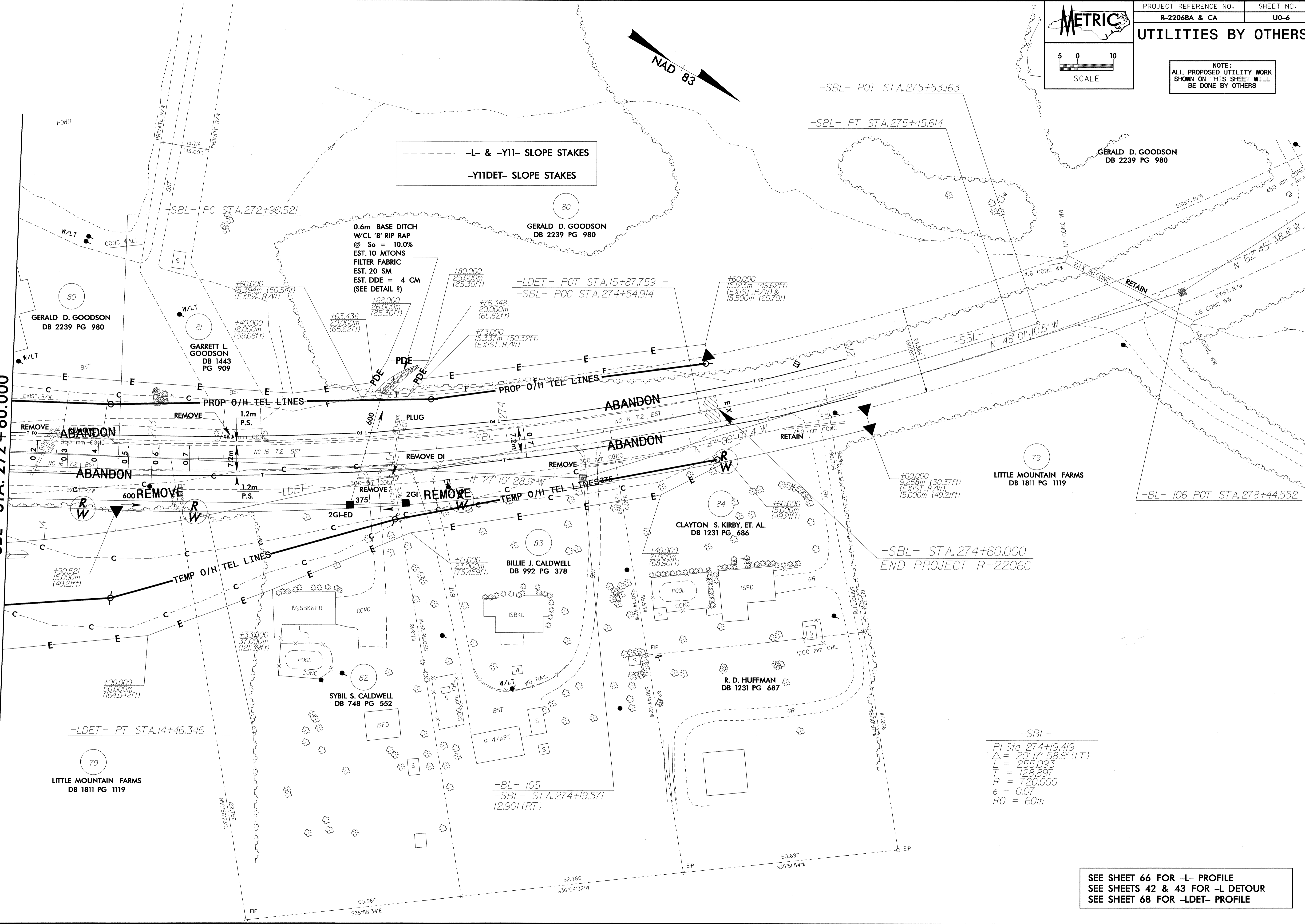
UTILITIES BY OTHERS

NOTE: ALL PROPOSED UTILITY WORK SHOWN ON THIS SHEET WILL BE DONE BY OTHERS



-L- & -Y11- SLOPE STAKES
-Y11DET- SLOPE STAKES

MATCHLINE SEE SHEET UO-6
-SBL- STA. 272+60.000



-SBL-
PI Sta 274+19.419
 $\Delta = 20' 17.58.6" (LT)$
 $L = 255.093$
 $T = 128.897$
 $R = 720.000$
 $e = 0.07$
 $RO = 60m$

SEE SHEET 66 FOR -L- PROFILE
SEE SHEETS 42 & 43 FOR -L DETOUR
SEE SHEET 68 FOR -LDET- PROFILE