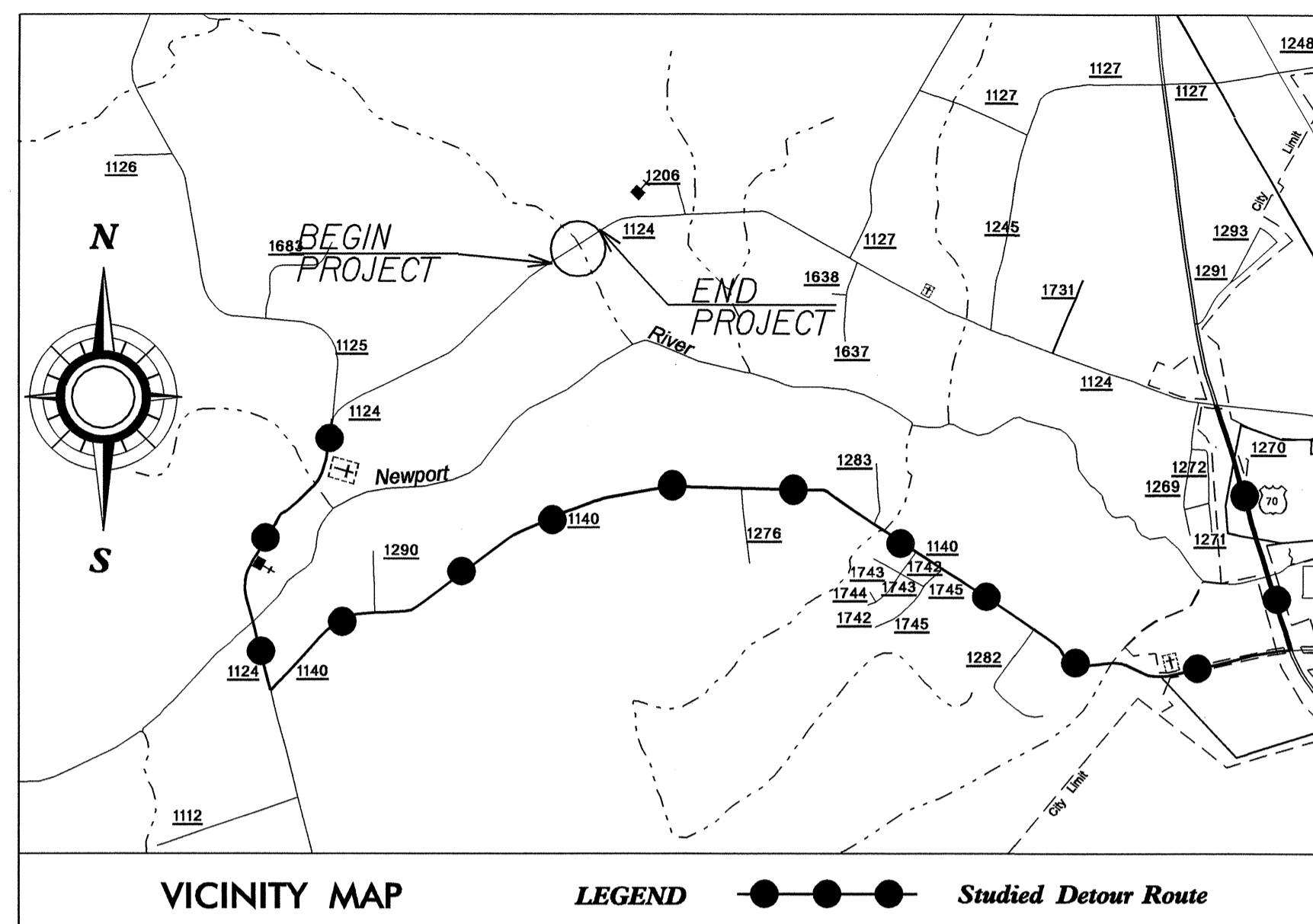


STATE OF NORTH CAROLINA
DIVISION OF HIGHWAYS

**UTILITY BY OTHERS PLANS
CARTERET COUNTY**

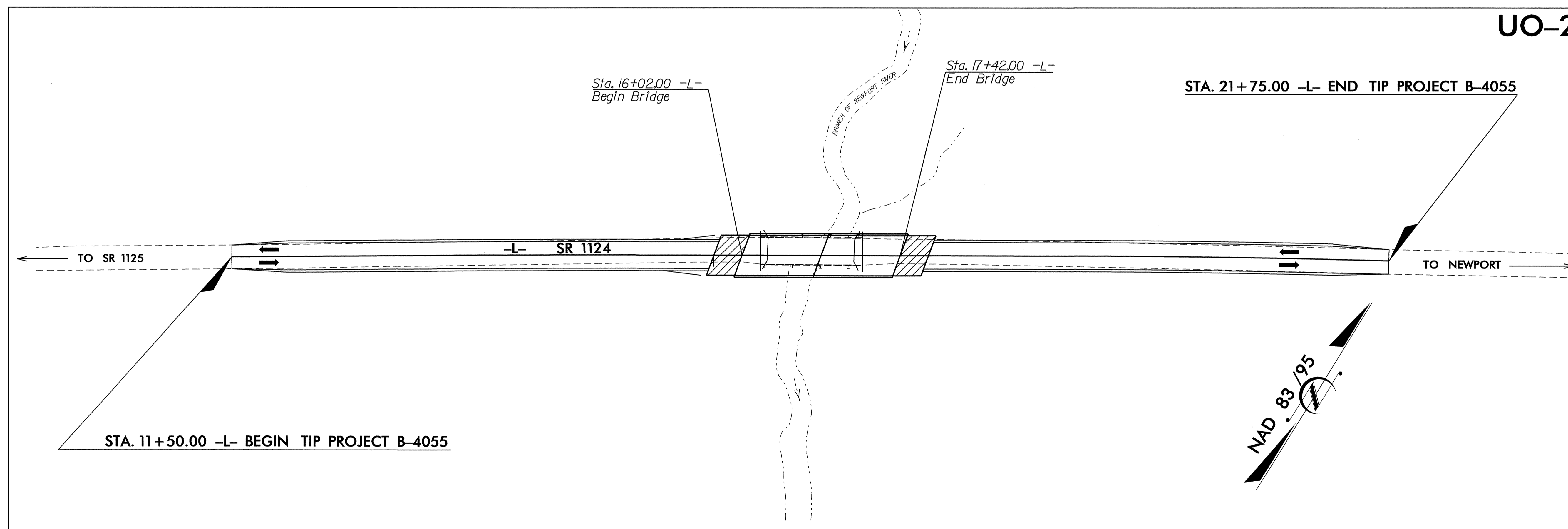
LOCATION: BRIDGE NO. 22 OVER BRANCH OF NEWPORT RIVER ON SR 1124

TYPE OF WORK: UTILITIES BY OTHERS

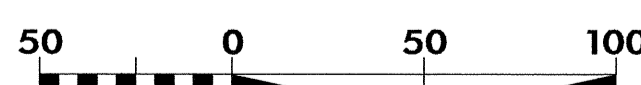


TIP PROJECT: B-4055

UO-2



GRAPHIC SCALES



INDEX OF SHEETS

SHEET NO.	DESCRIPTION
UO-1	TITLE SHEET
UO-2	UTILITIES BY OTHERS PLAN SHEETS

UTILITY OWNERS ON PROJECT

- (1) Embarq
- (2) Time Warner Cable



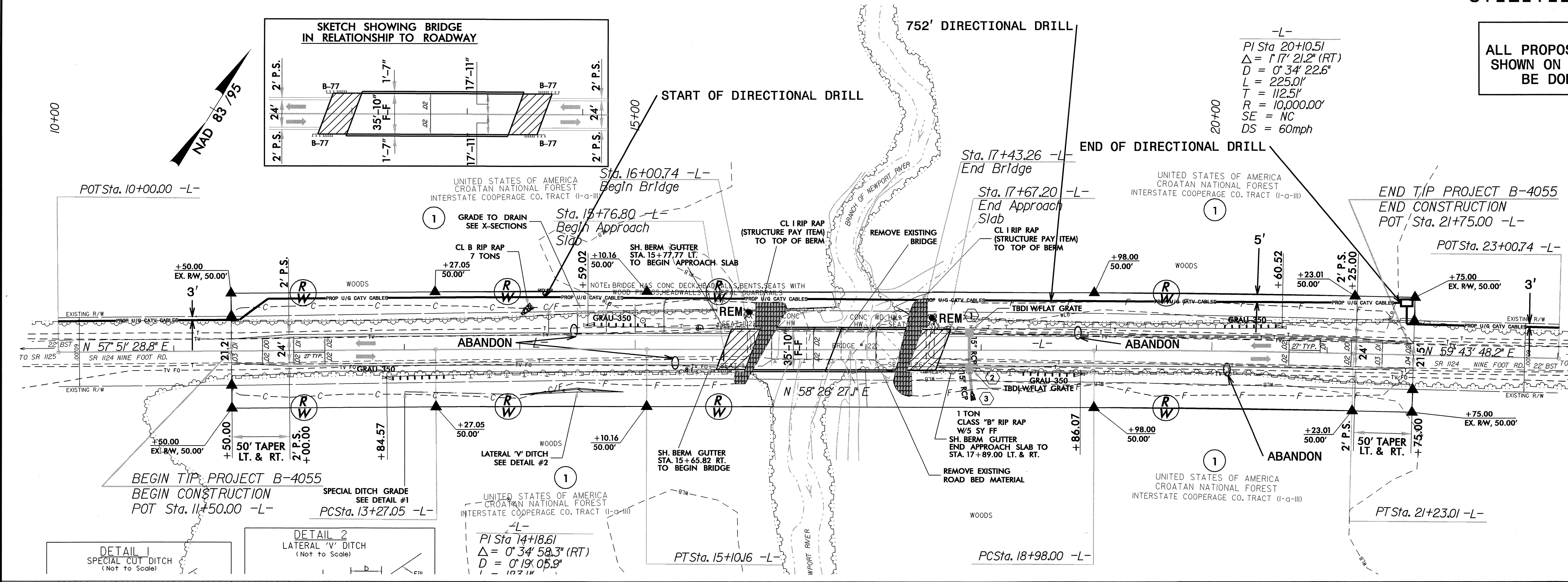
PREPARED IN THE OFFICE OF:
**DIVISION OF HIGHWAYS
 PROJECT SERVICES
 UTILITIES SECTION**

1591 MAIL SERVICES CENTER
 RALEIGH NC 27699-1591
 PHONE (919) 250-4128
 FAX (919) 250-4119

Roger Worthington, P.E. UTILITIES SECTION ENGINEER
Carl Barclay, P.E. UTILITIES SQUAD LEADER PROJECT ENGINEER
Bo Hemphill, P.E. UTILITIES PROJECT DESIGNER

UTILITIES BY OTHERS

NOTE:
ALL PROPOSED UTILITY WORK SHOWN ON THIS SHEET WILL BE DONE BY OTHERS



-L-
 PI Sta 20+10.51
 $\Delta = 17^\circ 21.2' (RT)$
 $D = 0^\circ 34' 22.6"$
 $L = 225.0'$
 $T = 112.5'$
 $R = 10,000.00'$
 $SE = NC$
 $DS = 60mph$

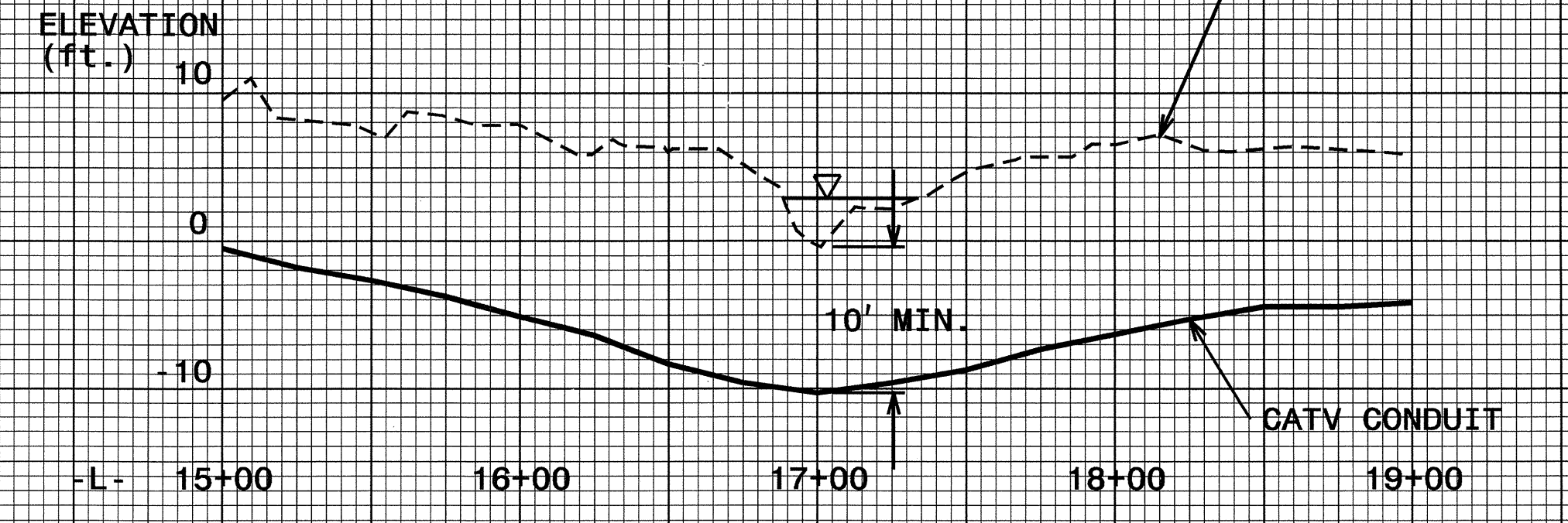
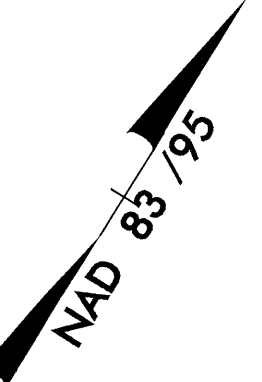
DETAIL 1
SPECIAL CUT DITCH
(Not to Scale)

DETAIL 2
LATERAL 'V' DITCH
(Not to Scale)

-L-
 PI Sta 14+18.61
 $\Delta = 0^\circ 34' 58.3' (RT)$
 $D = 0^\circ 19' 05.9"$
 $L = 107.1'$

5/14/99

10+00



r:\u0011\drawing\proj\4055\ut_04_u02_psh.dgn