

TIP PROJECT: B-4055

STATE OF NORTH CAROLINA
DIVISION OF HIGHWAYS
PLAN FOR PROPOSED
HIGHWAY EROSION CONTROL
CARTERET COUNTY

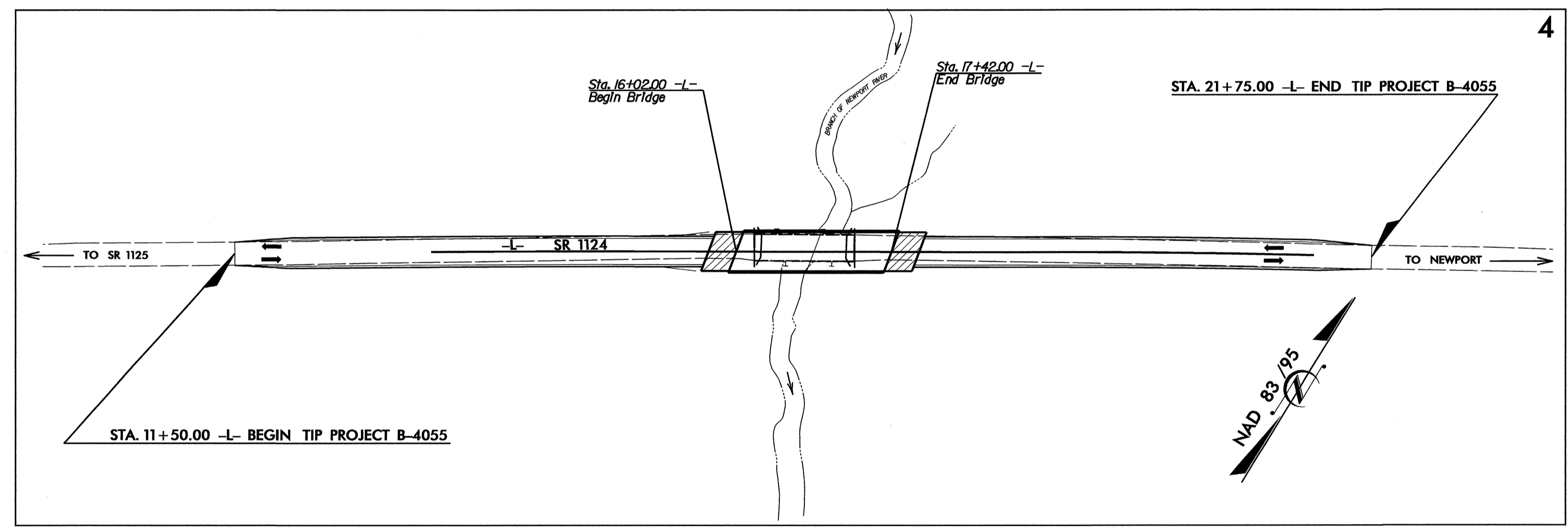
LOCATION: BRIDGE NO. 22 OVER BRANCH OF NEWPORT RIVER
ON SR 1124

TYPE OF WORK: GRADING, DRAINAGE, STRUCTURE, AND PAVING

STATE	STATE PROJECT REFERENCE NO.	SHEET NO.	TOTAL SHEETS
N.C.	B-4055	EC-1	
STATE PROJ. NO.	F.A. PROJ. NO.	DESCRIPTION	

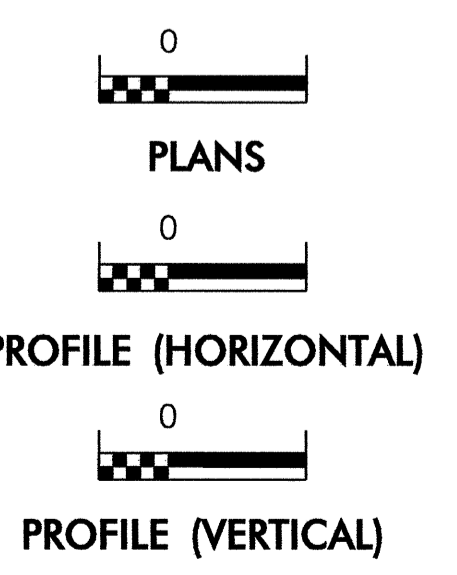
EROSION AND SEDIMENT CONTROL MEASURES

Std. #	Description	Symbol
1630.03	Temporary Silt Ditch	TD
1630.05	Temporary Diversion	TD
1605.01	Temporary Silt Fence	
1606.01	Special Sediment Control Fence	
1622.01	Temporary Berms and Slope Drains	---T---
1630.01	Riser Basin	[circle symbol]
1630.02	Silt Basin Type B	[rectangle symbol]
1633.01	Temporary Rock Silt Check Type-A	[cross-hatch symbol]
	Temporary Rock Silt Check Type-B	[diagonal-hatch symbol]
	Wattle	[arrow symbol]
1634.01	Temporary Rock Sediment Dam Type-A	[dam symbol]
1634.02	Temporary Rock Sediment Dam Type-B	[dam symbol]
1635.01	Rock Pipe Inlet Sediment Trap Type-A	[trap symbol]
1635.02	Rock Pipe Inlet Sediment Trap Type-B	[trap symbol]
1630.04	Stilling Basin	[basin symbol]
	Rock Inlet Sediment Trap:	
1632.01	Type A	A
1632.02	Type B	B
1632.03	Type C	C
	Skimmer Basin	[skimmer symbol]
	Tiered Skimmer Basin	[skimmer symbol]
	Infiltration Basin	[basin symbol]



**THIS PROJECT CONTAINS
EROSION CONTROL PLANS
FOR CLEARING AND
GRUBBING PHASE OF
CONSTRUCTION.**

GRAPHIC SCALE



ROADSIDE ENVIRONMENTAL UNIT
DIVISION OF HIGHWAYS
STATE OF NORTH CAROLINA

Prepared In the Office of:
ROADSIDE ENVIRONMENTAL UNIT
1 South Wilmington St.
Raleigh, NC 27611
2006 STANDARD SPECIFICATIONS

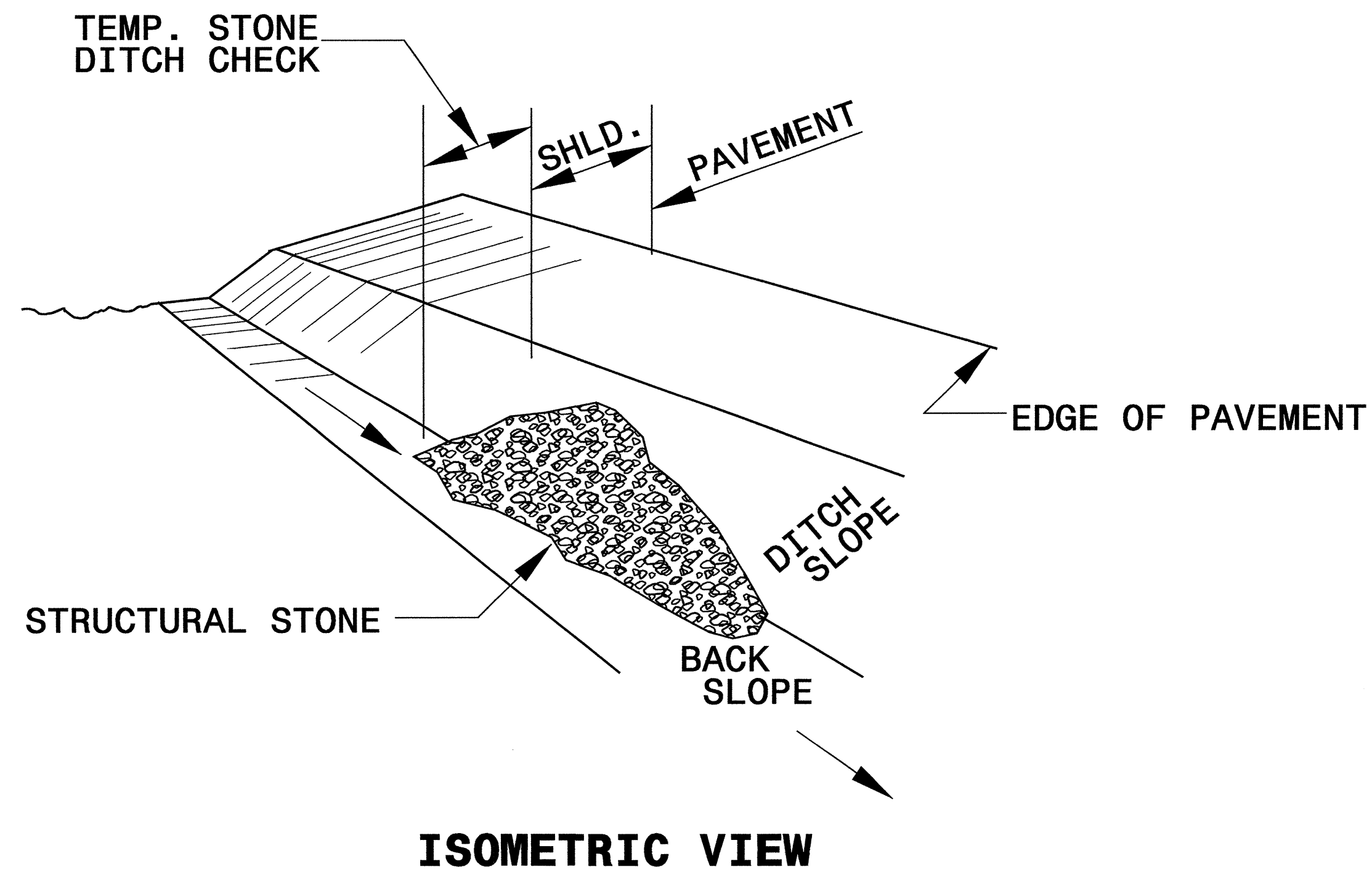
Roadway Standard Drawings
The following roadway english standards as appear in "Roadway Standard Drawings"- Roadway Design Unit - N. C. Department of Transportation - Raleigh, N. C., dated July 18, 2006 and the latest revision thereto are applicable to this project and by reference hereby are considered a part of these plans.

1605.01 Temporary Silt Fence 1632.03 Rock Inlet Sediment Trap Type C
1606.01 Special Sediment Control Fence 1633.01 Temporary Rock Silt Check Type A
1607.01 Gravel Construction Entrance
1622.01 Temporary Berms and Slope Drains
1630.05 Temporary Diversion

23-FEB-2006 10:30
r:\newport\p\p23\9n\4055.ec.tsh.dgn
PRINTED AT REV 23/03/06

PROJECT REFERENCE NO. B-4055	SHEET NO. EC-2
RW SHEET NO.	
ROADWAY DESIGN ENGINEER	HYDRAULICS ENGINEER

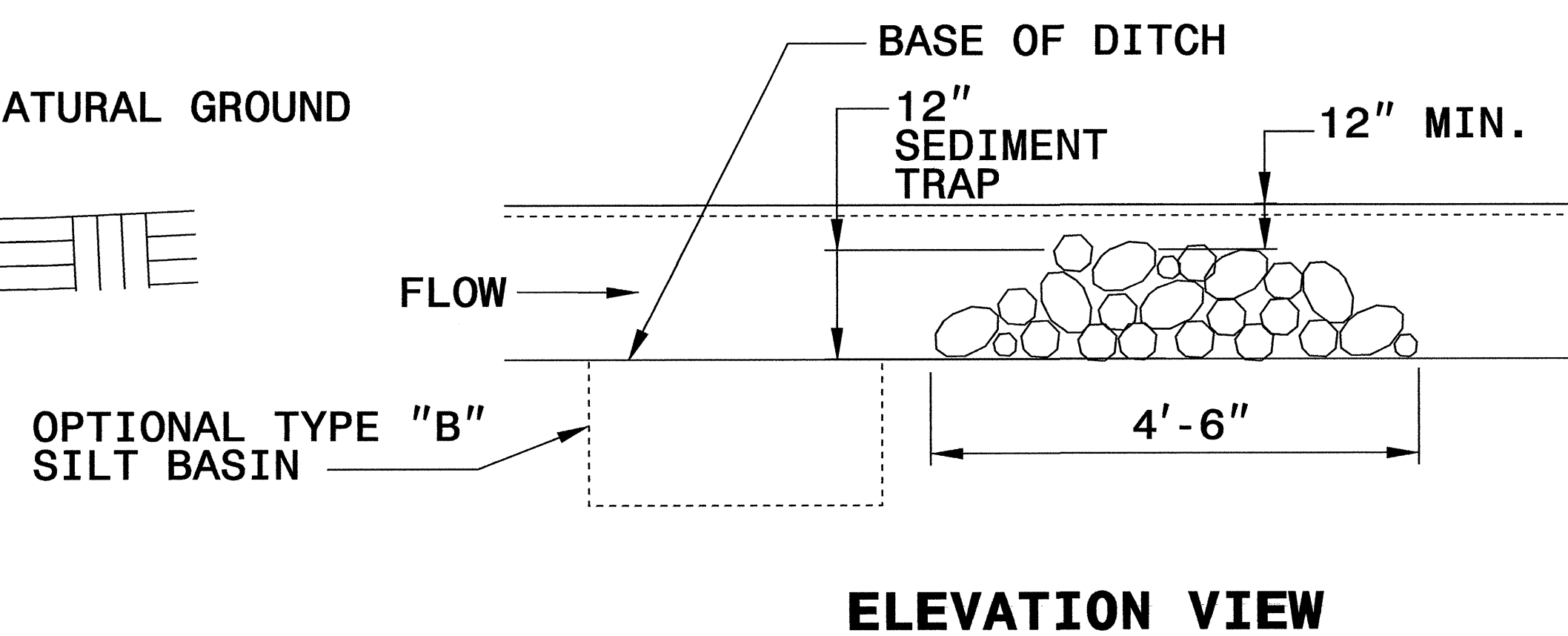
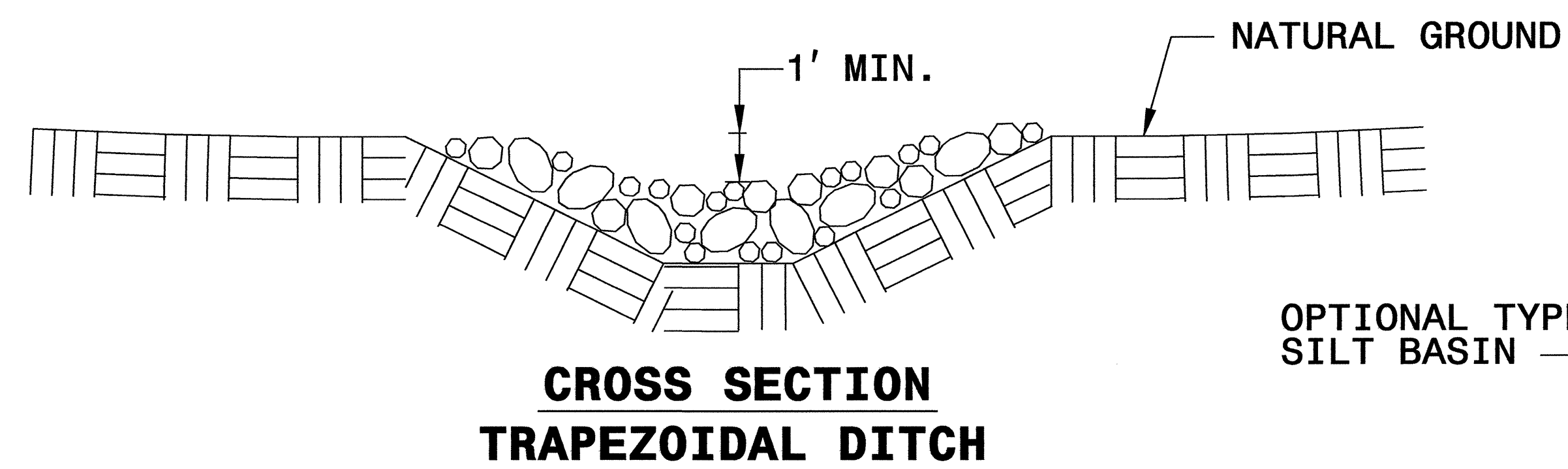
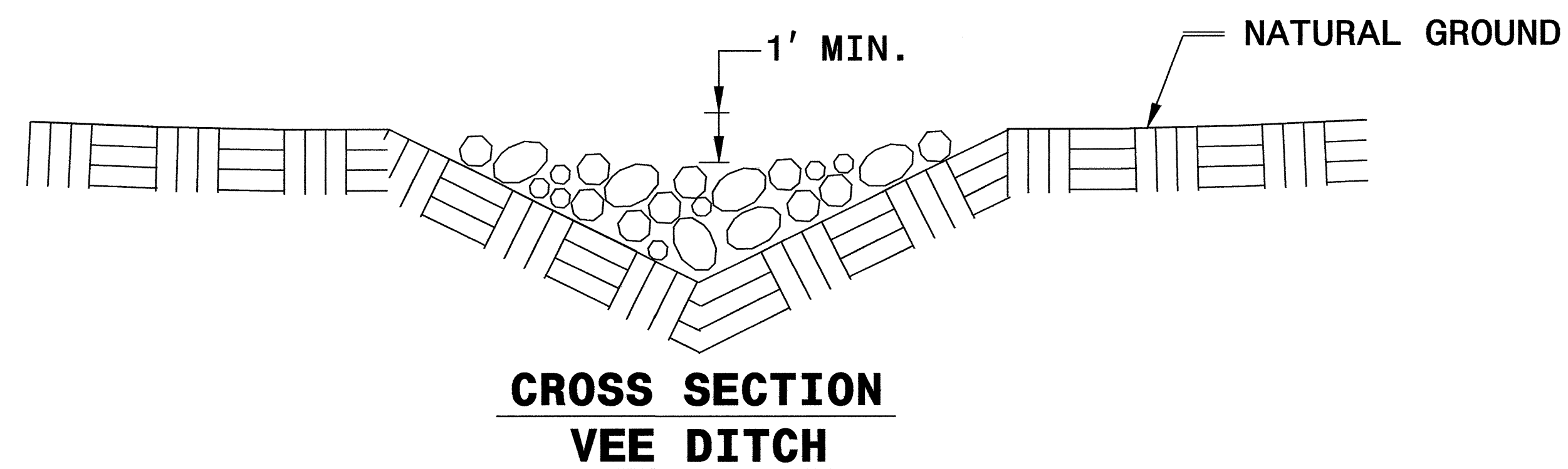
TEMPORARY ROCK SILT CHECK TYPE 'B' DETAIL



NOTES:

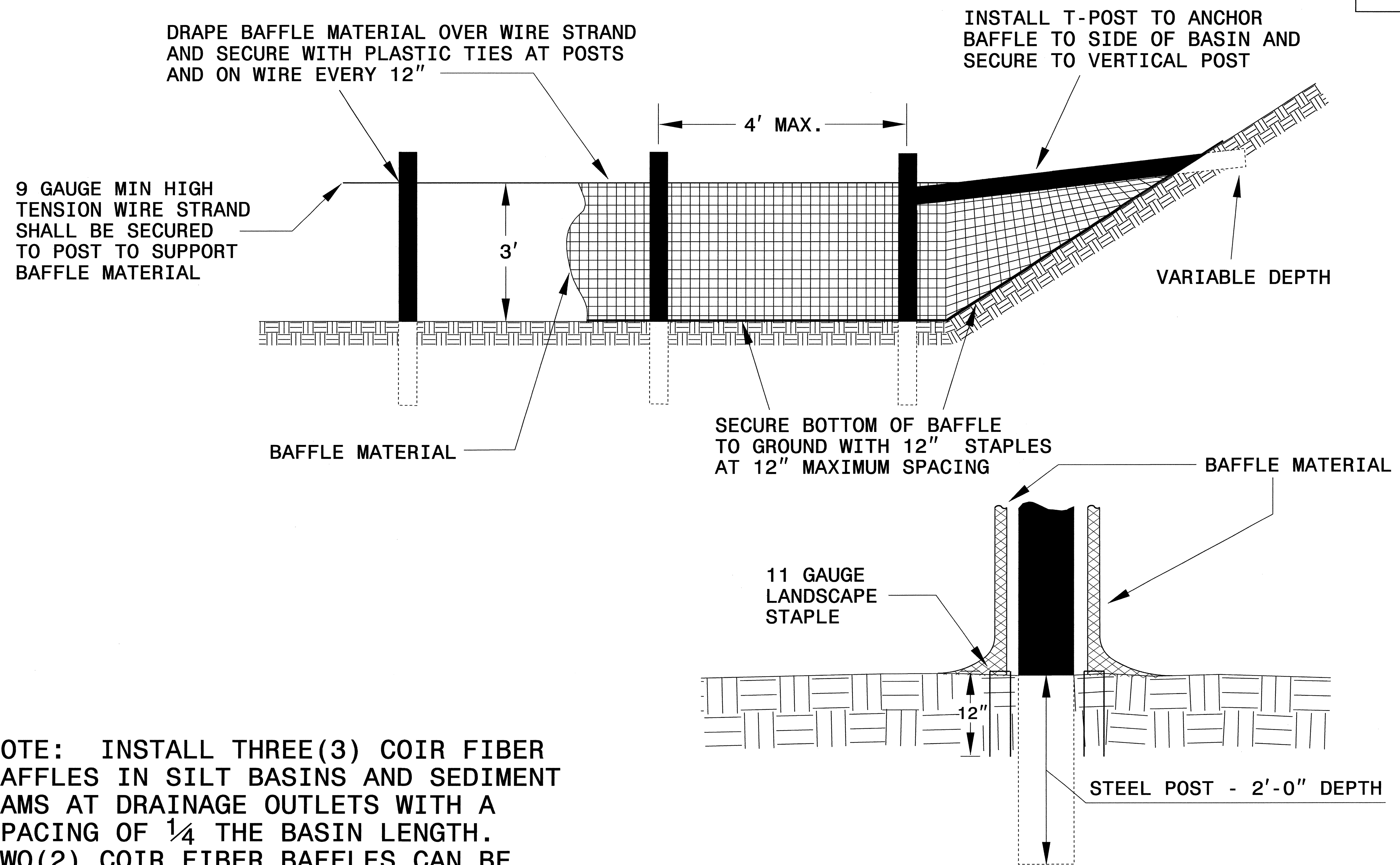
USE CLASS 'B' EROSION CONTROL STONE FOR STRUCTURAL STONE.

THE ENGINEER MAY DIRECT THE OPTION OF CLASS "A" STONE FOR SITES HAVING LESS THAN ONE (1) ACRE DRAINAGE AREA AND A DITCH GRADE LESS THAN 3%.



PROJECT REFERENCE NO. B-4055	SHEET NO. EC-2A
RW SHEET NO.	
ROADWAY DESIGN ENGINEER	HYDRAULICS ENGINEER

COIR FIBER BAFFLE DETAIL

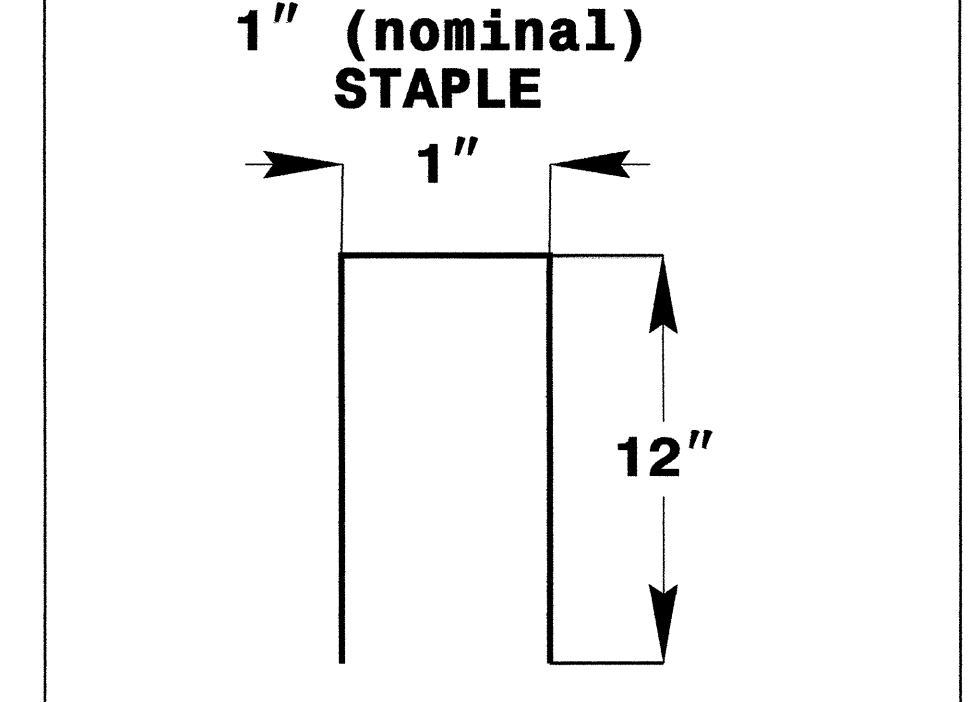
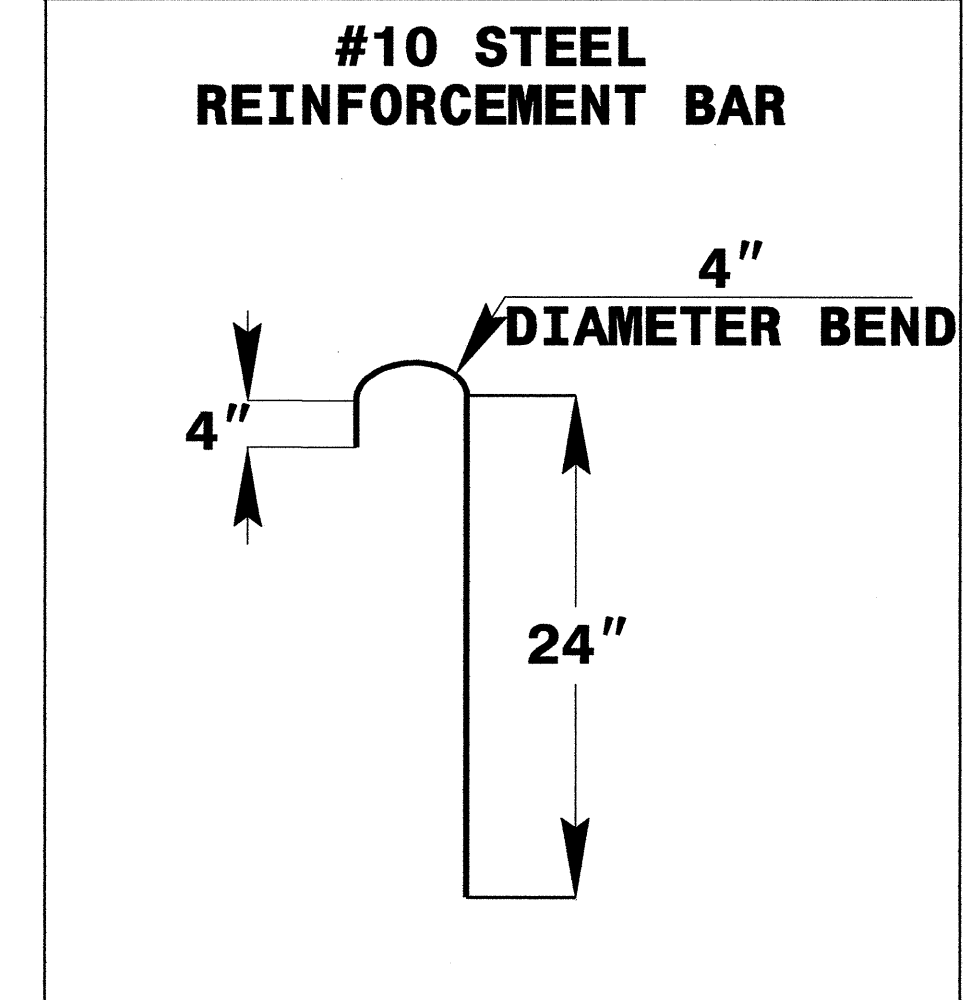
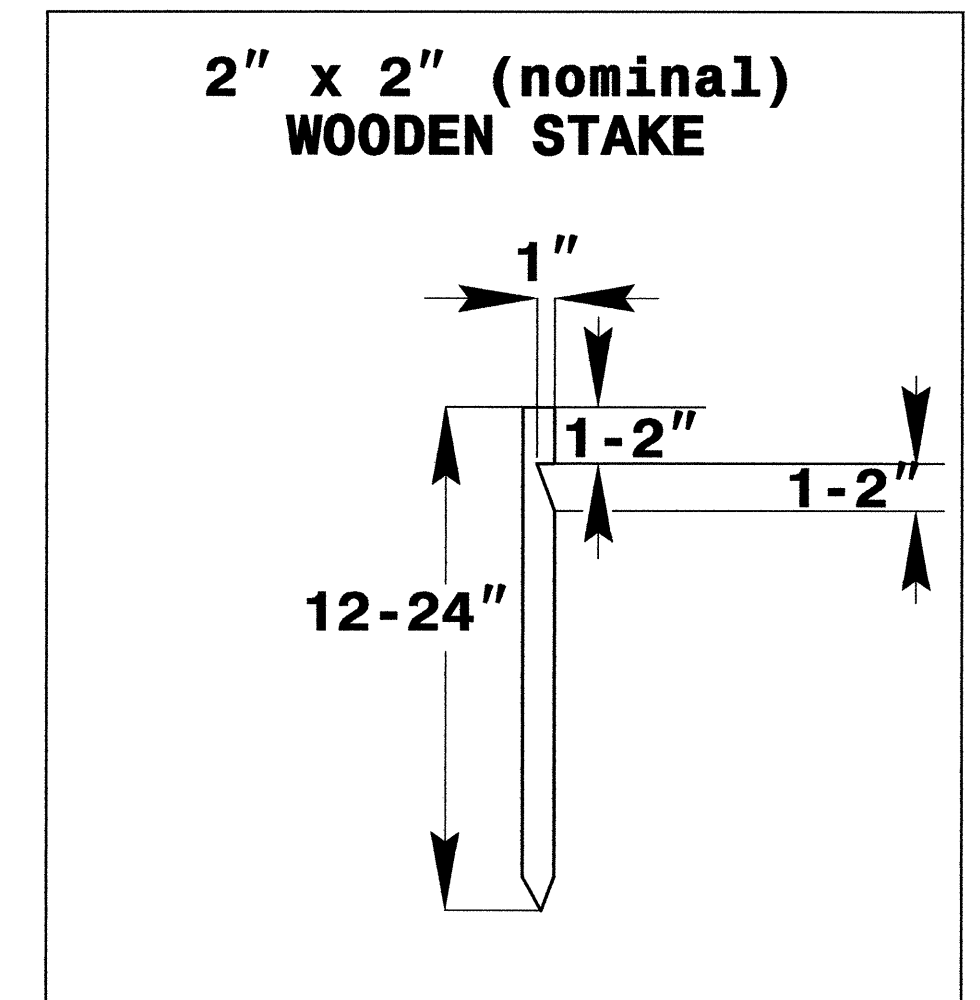
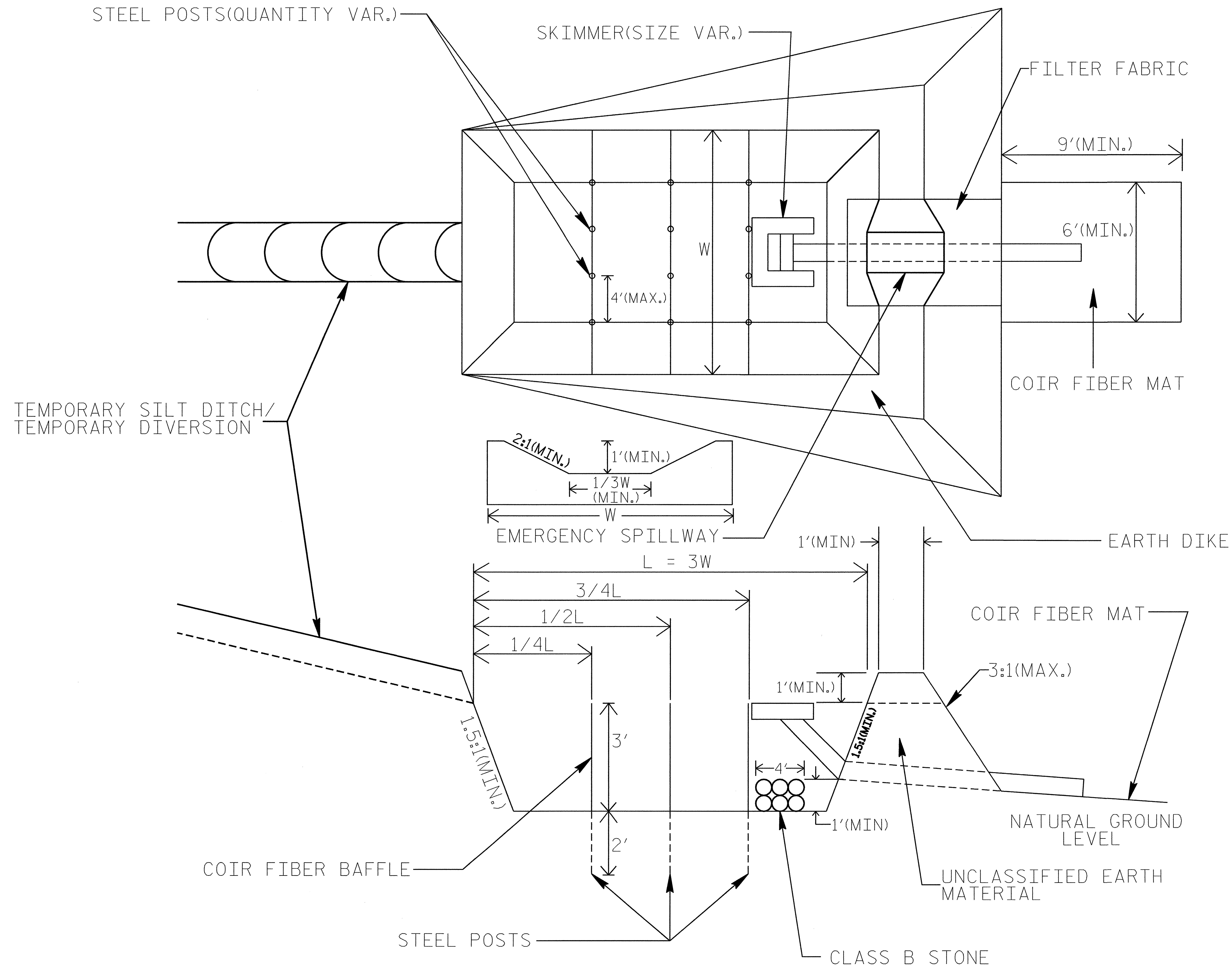


NOTE: INSTALL THREE(3) COIR FIBER BAFFLES IN SILT BASINS AND SEDIMENT DAMS AT DRAINAGE OUTLETS WITH A SPACING OF $\frac{1}{4}$ THE BASIN LENGTH. TWO(2) COIR FIBER BAFFLES CAN BE INSTALLED IN SILT BASINS AND DAMS LESS THAN 20 FT. IN LENGTH WITH A SPACING OF $\frac{1}{3}$ THE BASIN LENGTH.

BAFFLE MATERIAL SHALL BE SECURED TO THE BOTTOM AND SIDES OF BASIN USING 12" LANDSCAPE STAPLES

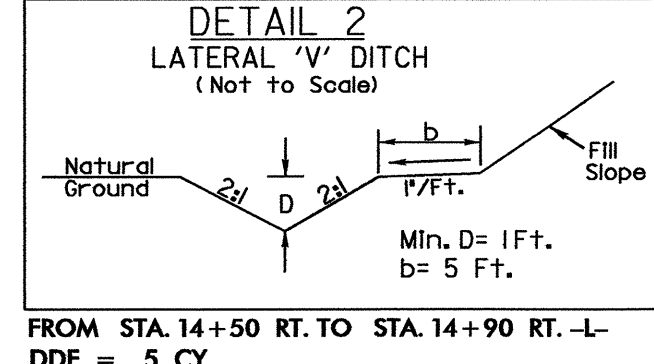
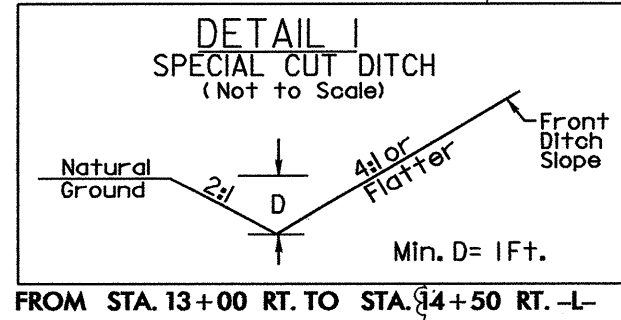
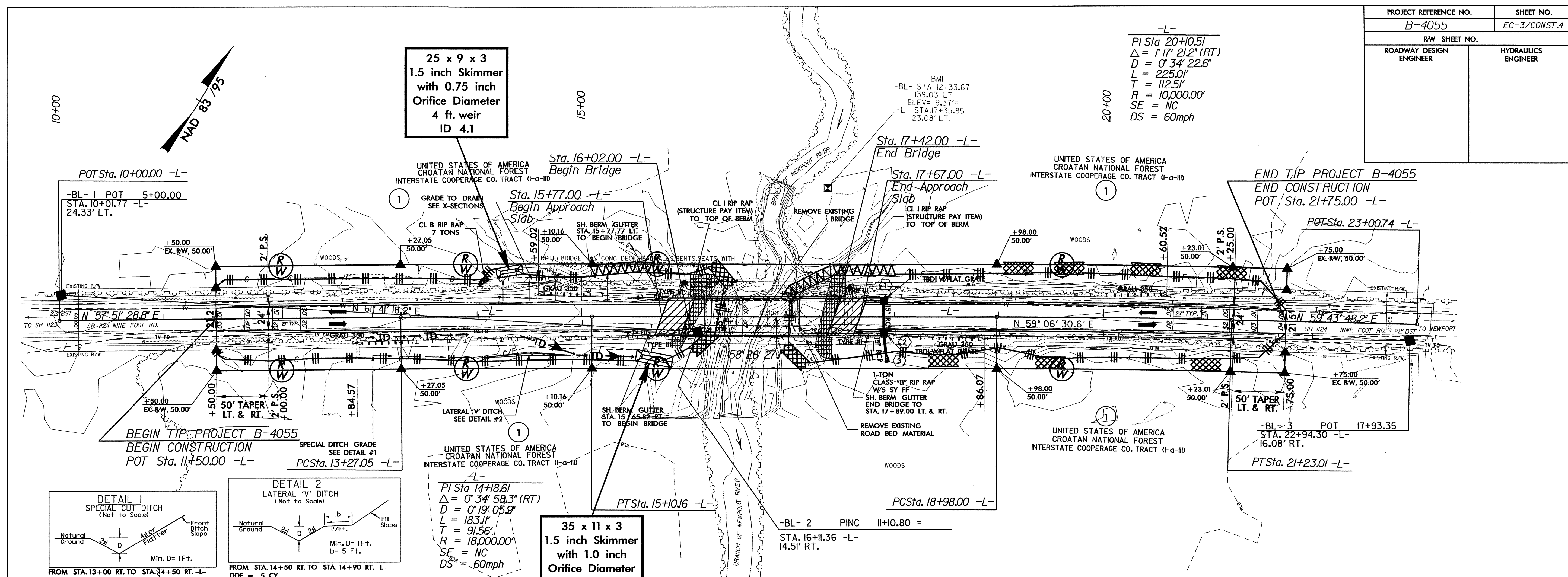
SKIMMER BASIN WITH BAFFLES DETAIL

PROJECT REFERENCE NO. B-4055	SHEET NO. EC-2B
RW SHEET NO.	
ROADWAY DESIGN ENGINEER	HYDRAULICS ENGINEER



**COIR FIBER MAT
ANCHOR OPTIONS**

- NOTES:**
1. SEED AND PLACE MATTING FOR EROSION CONTROL ON SIDESLOPES.
 2. LIMIT EARTH DIKE HEIGHT TO 5 FT.

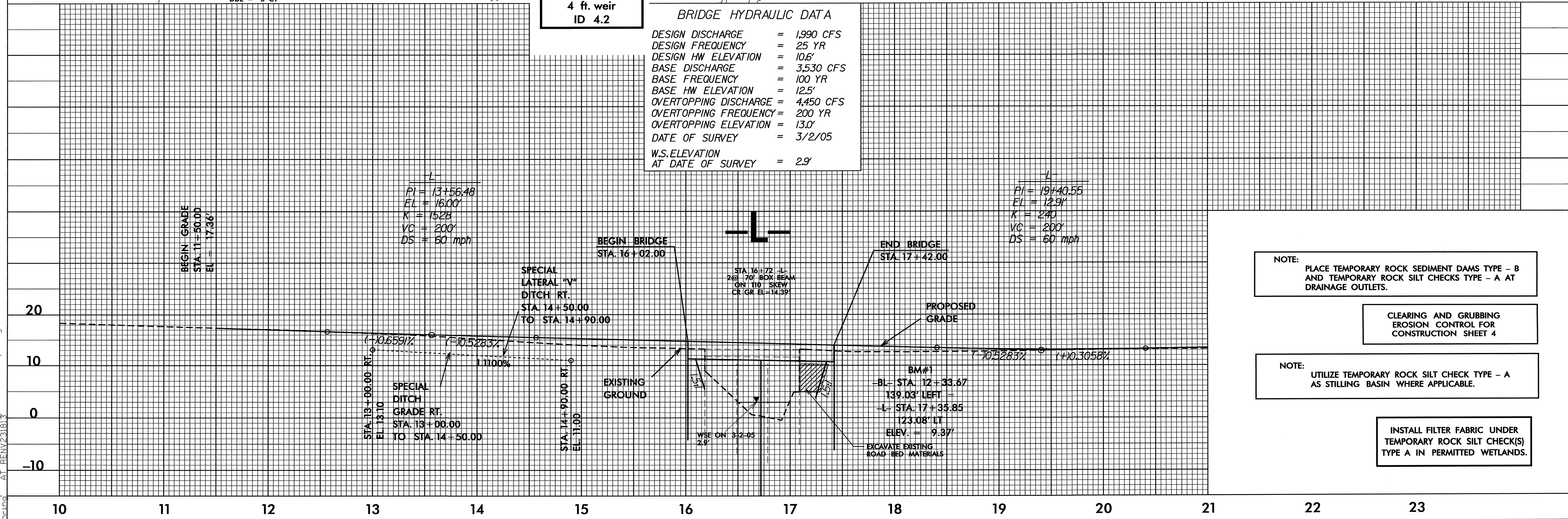


PI Sta 14+18.61
 $\Delta = 0' 34' 58.3''$ (RT)
 $D = 0' 19' 05.9''$
 $L = 183.1'$
 $T = 91.56'$
 $R = 18,000.00'$
 $SE = NC$
 $DS = 60$ mph

35 x 11 x 3
 1.5 inch Skimmer
 with 1.0 inch
 Orifice Diameter
 4 ft. weir
 ID 4.2

BRIDGE HYDRAULIC DATA

DESIGN DISCHARGE	= 1,990 CFS
DESIGN FREQUENCY	= 25 YR
DESIGN HW ELEVATION	= 10.6'
BASE DISCHARGE	= 3,530 CFS
BASE FREQUENCY	= 100 YR
BASE HW ELEVATION	= 12.5'
OVERTOPPING DISCHARGE	= 4,450 CFS
OVERTOPPING FREQUENCY	= 200 YR
OVERTOPPING ELEVATION	= 13.0'
DATE OF SURVEY	= 3/2/05
W.S. ELEVATION AT DATE OF SURVEY	= 2.9'

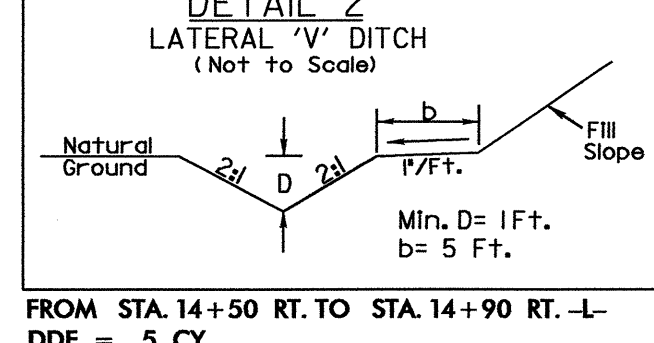
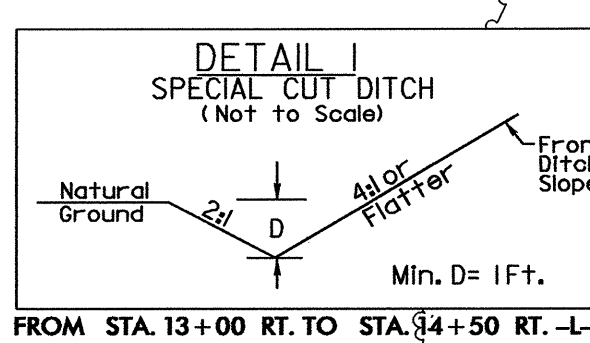
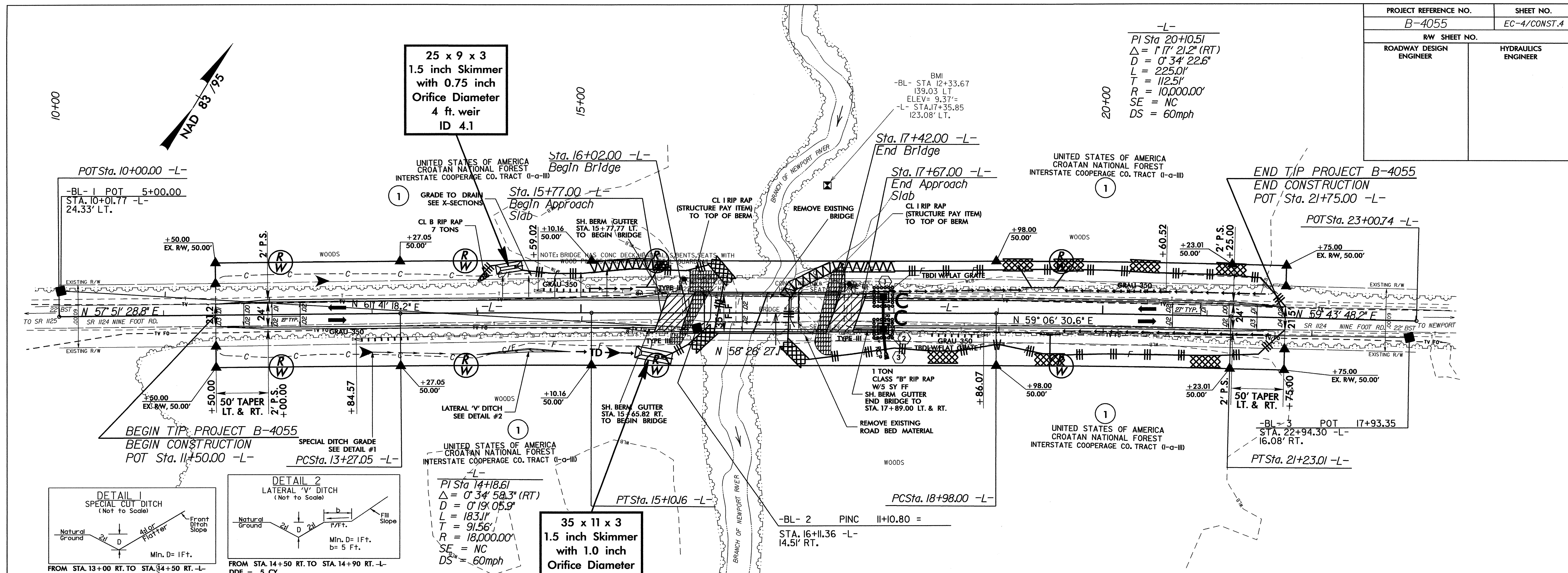


NOTE: PLACE TEMPORARY ROCK SEDIMENT DAMS TYPE - B AND TEMPORARY ROCK SILT CHECKS TYPE - A AT DRAINAGE OUTLETS.

CLEARING AND GRUBBING EROSION CONTROL FOR CONSTRUCTION SHEET 4

NOTE: UTILIZE TEMPORARY ROCK SILT CHECK TYPE - A AS STILLING BASIN WHERE APPLICABLE.

INSTALL FILTER FABRIC UNDER TEMPORARY ROCK SILT CHECK(S) TYPE A IN PERMITTED WETLANDS.

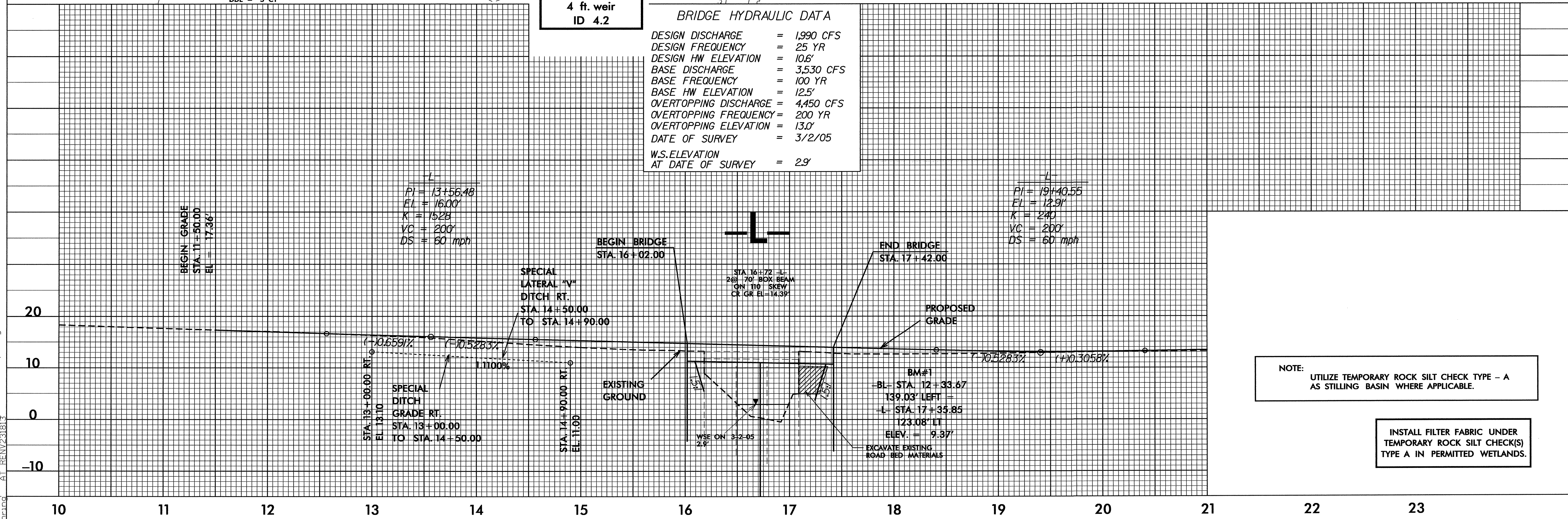


$PI\ Sta\ 14+18.61$
 $\Delta = 0^\circ 34' 58.3\" (RT)$
 $D = 0' 19.05.9'$
 $L = 183.1'$
 $T = 91.56'$
 $R = 18,000.00'$
 $SE = NC$
 $DS = 60\ mph$

35 x 11 x 3
1.5 inch Skimmer
with 1.0 inch
Orifice Diameter
4 ft. weir
ID 4.2

BRIDGE HYDRAULIC DATA

DESIGN DISCHARGE	= 1,990 CFS
DESIGN FREQUENCY	= 25 YR
DESIGN HW ELEVATION	= 10.6'
BASE DISCHARGE	= 3,530 CFS
BASE FREQUENCY	= 100 YR
BASE HW ELEVATION	= 12.5'
OVERTOPPING DISCHARGE	= 4,450 CFS
OVERTOPPING FREQUENCY	= 200 YR
OVERTOPPING ELEVATION	= 13.0'
DATE OF SURVEY	= 3/2/05
W.S. ELEVATION AT DATE OF SURVEY	= 2.9'



NOTE: UTILIZE TEMPORARY ROCK SILT CHECK TYPE - A AS STILLING BASIN WHERE APPLICABLE.

INSTALL FILTER FABRIC UNDER TEMPORARY ROCK SILT CHECK(S) TYPE A IN PERMITTED WETLANDS.

29-FEB-2008 10:12
 \\pwr\pwr\Design\64055-EC.psh.dgn
 A:\REV\231813