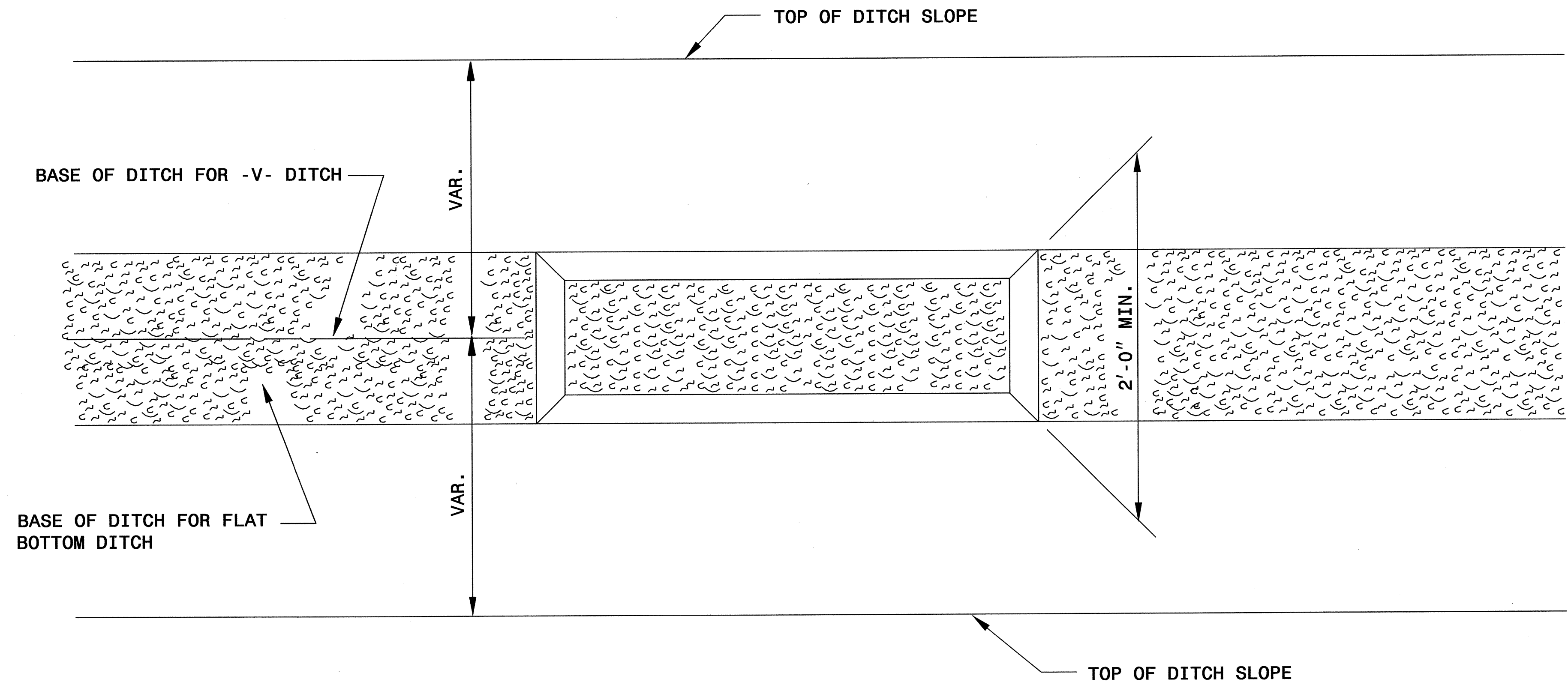
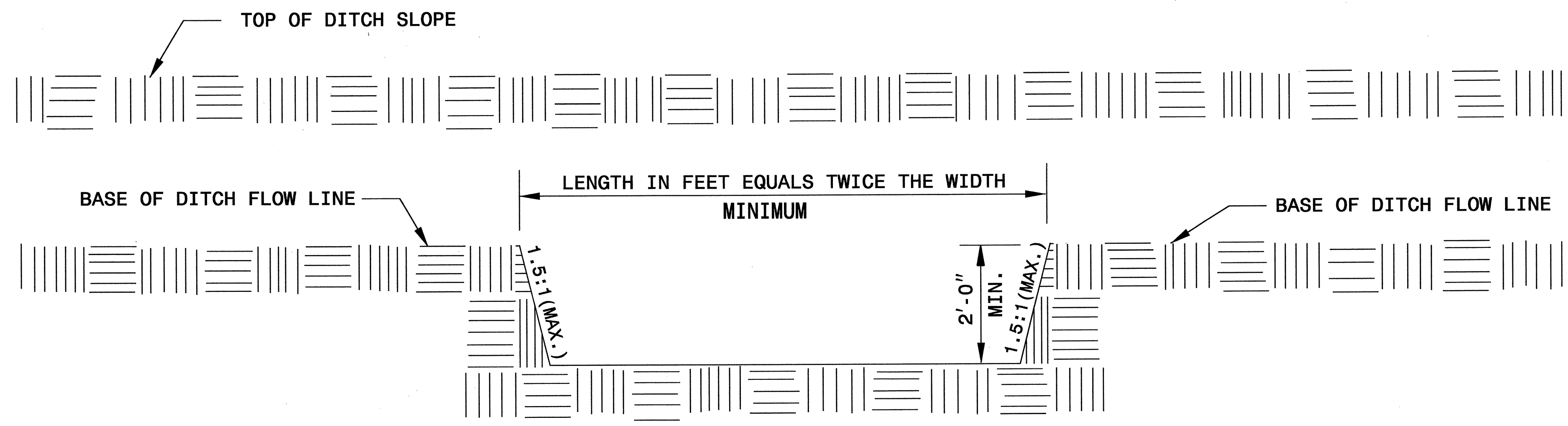


PROJECT REFERENCE NO.	SHEET NO.
W-5002	EC1
RW SHEET NO.	
ROADWAY DESIGN ENGINEER	HYDRAULICS ENGINEER

SILT BASIN 'B' DETAIL



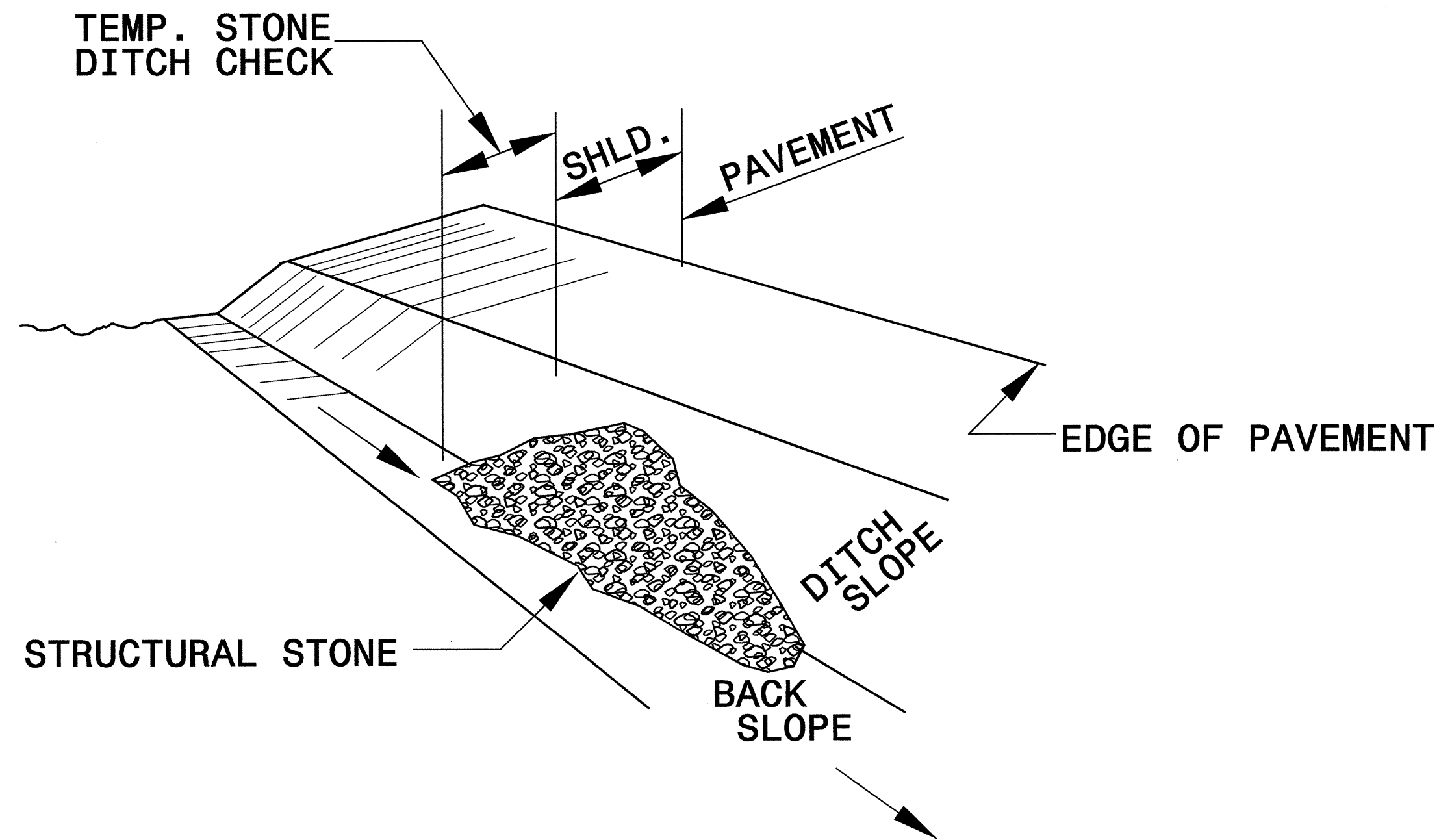
PLAN



ELEVATION

PROJECT REFERENCE NO.	SHEET NO.
W-5002	EC-1A
RW SHEET NO.	
ROADWAY DESIGN ENGINEER	HYDRAULICS ENGINEER

TEMPORARY ROCK SILT CHECK TYPE 'B' DETAIL

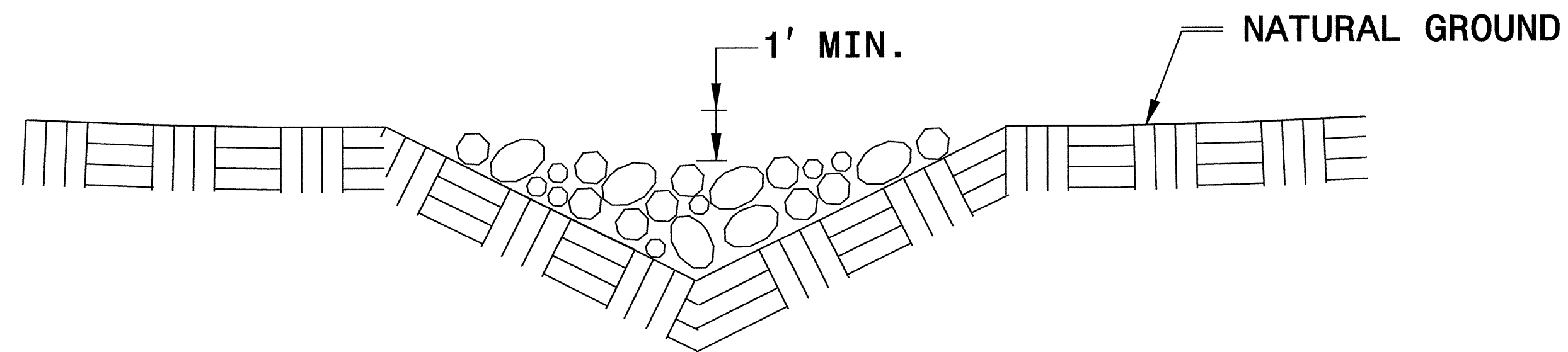


ISOMETRIC VIEW

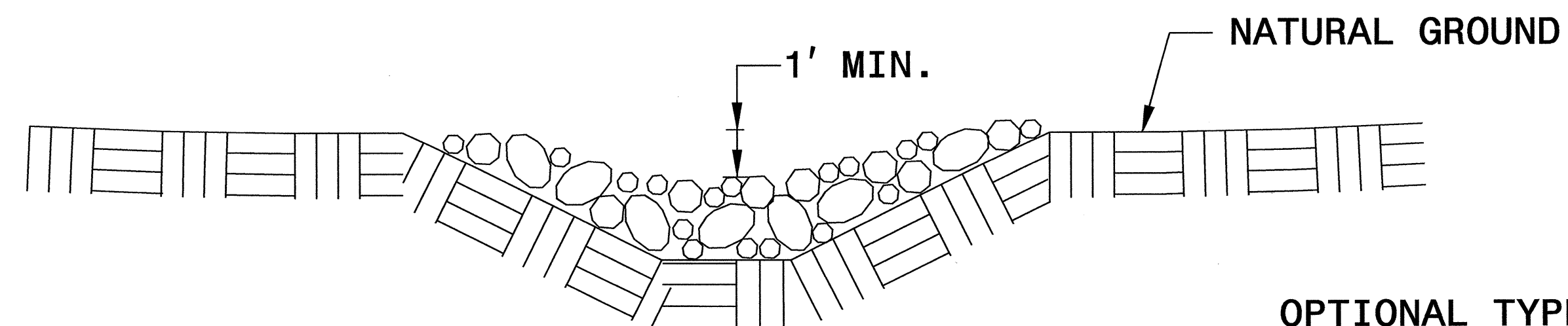
NOTES:

USE CLASS 'B' EROSION CONTROL STONE FOR STRUCTURAL STONE.

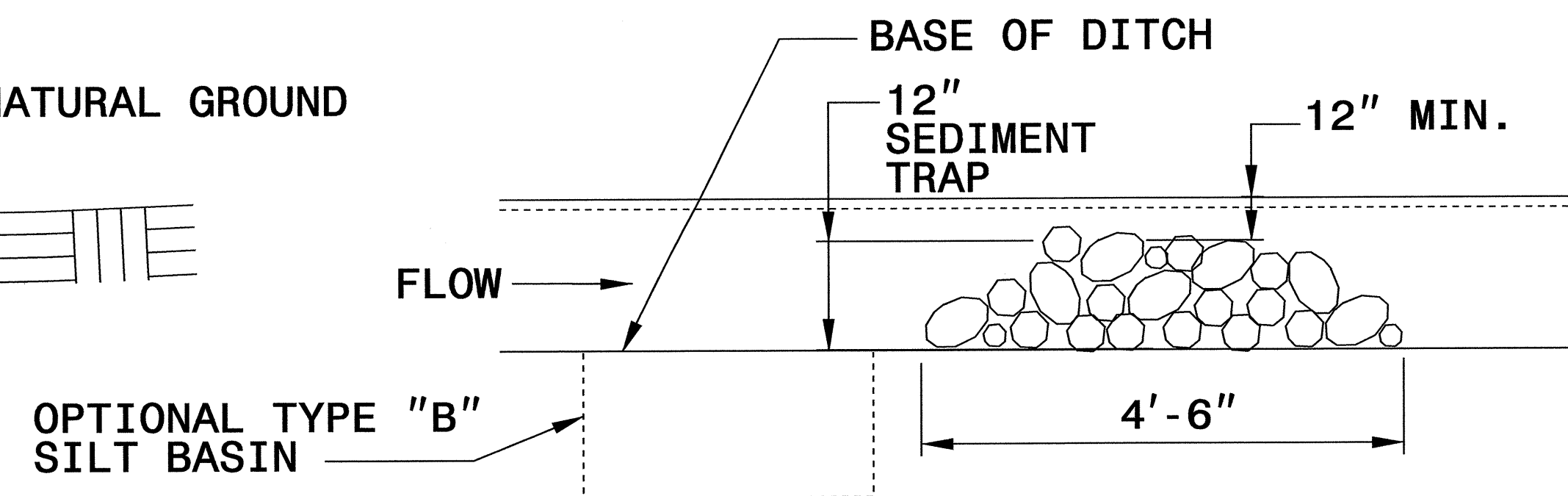
THE ENGINEER MAY DIRECT THE OPTION OF CLASS "A" STONE FOR SITES HAVING LESS THAN ONE (1) ACRE DRAINAGE AREA AND A DITCH GRADE LESS THAN 3%.



CROSS SECTION VEE DITCH



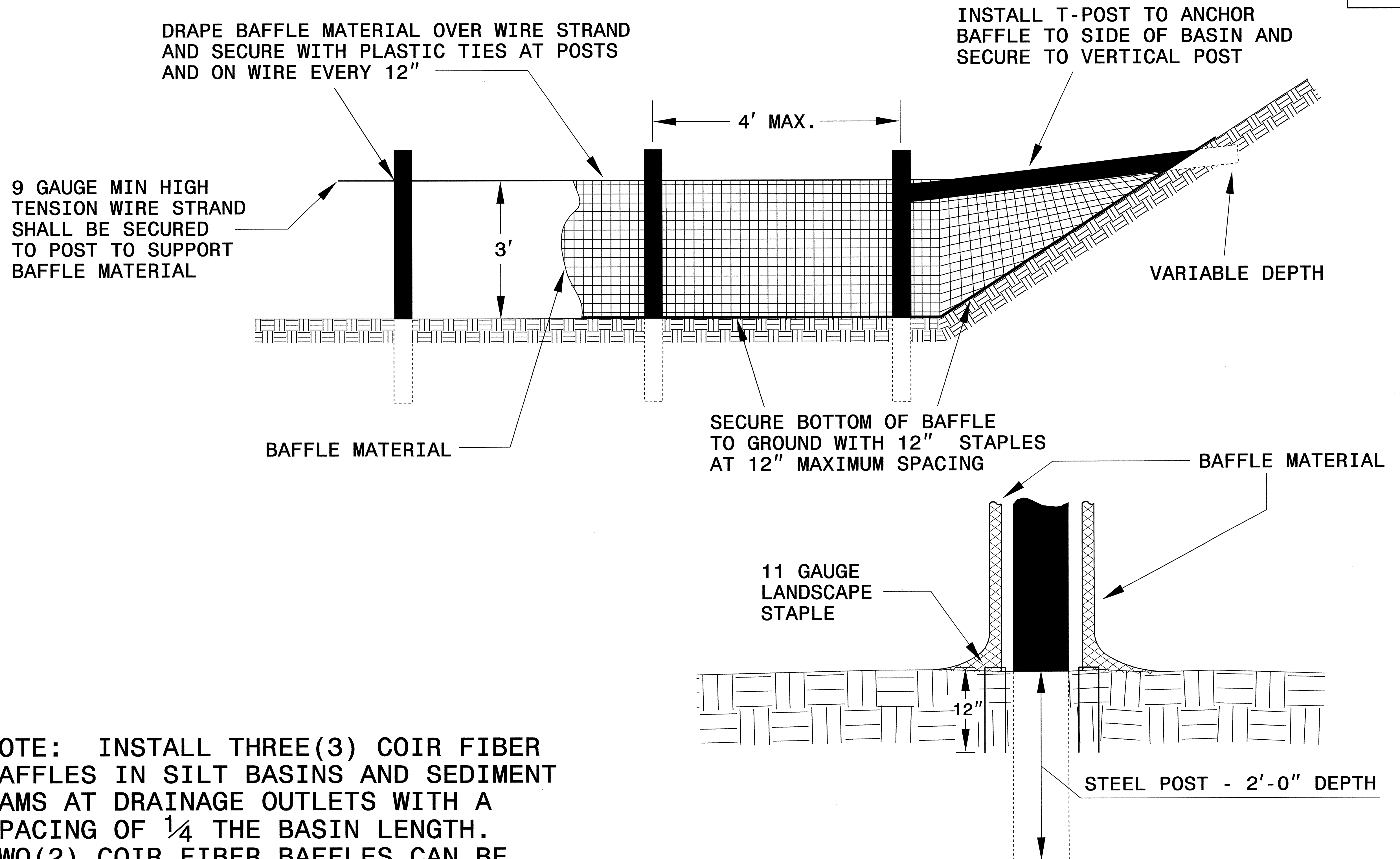
CROSS SECTION TRAPEZOIDAL DITCH



ELEVATION VIEW

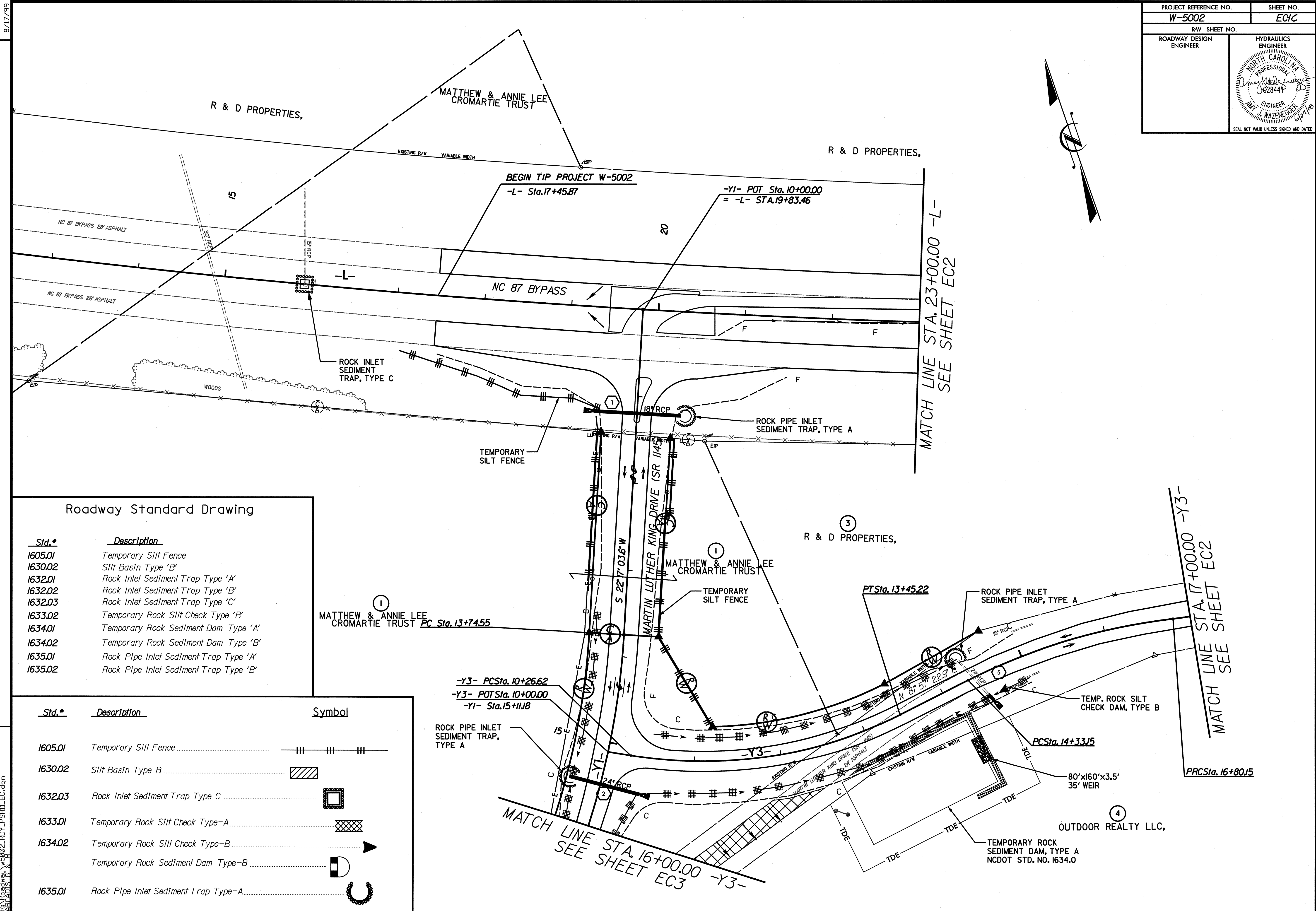
PROJECT REFERENCE NO. W-5002	SHEET NO. EC-18
RW SHEET NO.	
ROADWAY DESIGN ENGINEER	HYDRAULICS ENGINEER

COIR FIBER BAFFLE DETAIL



NOTE: INSTALL THREE(3) COIR FIBER BAFFLES IN SILT BASINS AND SEDIMENT DAMS AT DRAINAGE OUTLETS WITH A SPACING OF $\frac{1}{4}$ THE BASIN LENGTH. TWO(2) COIR FIBER BAFFLES CAN BE INSTALLED IN SILT BASINS AND DAMS LESS THAN 20 FT. IN LENGTH WITH A SPACING OF $\frac{1}{3}$ THE BASIN LENGTH.

BAFFLE MATERIAL SHALL BE SECURED TO THE BOTTOM AND SIDES OF BASIN USING 12" LANDSCAPE STAPLES



Roadway Standard Drawing

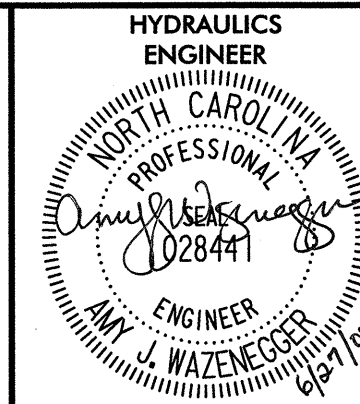
Std.*	Description
1605.01	Temporary Silt Fence
1630.02	Silt Basin Type 'B'
1632.01	Rock Inlet Sediment Trap Type 'A'
1632.02	Rock Inlet Sediment Trap Type 'B'
1632.03	Rock Inlet Sediment Trap Type 'C'
1633.02	Temporary Rock Silt Check Type 'B'
1634.01	Temporary Rock Sediment Dam Type 'A'
1634.02	Temporary Rock Sediment Dam Type 'B'
1635.01	Rock Pipe Inlet Sediment Trap Type 'A'
1635.02	Rock Pipe Inlet Sediment Trap Type 'B'

Std.*	Description	Symbol
1605.01	Temporary Silt Fence	— — — —
1630.02	Silt Basin Type B	
1632.03	Rock Inlet Sediment Trap Type C	
1633.01	Temporary Rock Silt Check Type-A	
1634.02	Temporary Rock Silt Check Type-B	
	Temporary Rock Sediment Dam Type-B	
1635.01	Rock Pipe Inlet Sediment Trap Type-A	

REVISIONS

8/17/99
 6/26/2008
 R:\Projects\W-5002\RDY_PSH11_EC.dgn
 J. WAZENECKER

8/17/99

PROJECT REFERENCE NO. W-5002	SHEET NO. EC2
R/W SHEET NO.	
ROADWAY DESIGN ENGINEER	HYDRAULICS ENGINEER
	
SEAL NOT VALID UNLESS SIGNED AND DATED	

MATCH LINE STA. 23+00.00 -L-
SEE SHEET EC1

MATCH LINE STA. 17+00.00 -Y3-
SEE SHEET EC1

REVISIONS

SYSTEMS

