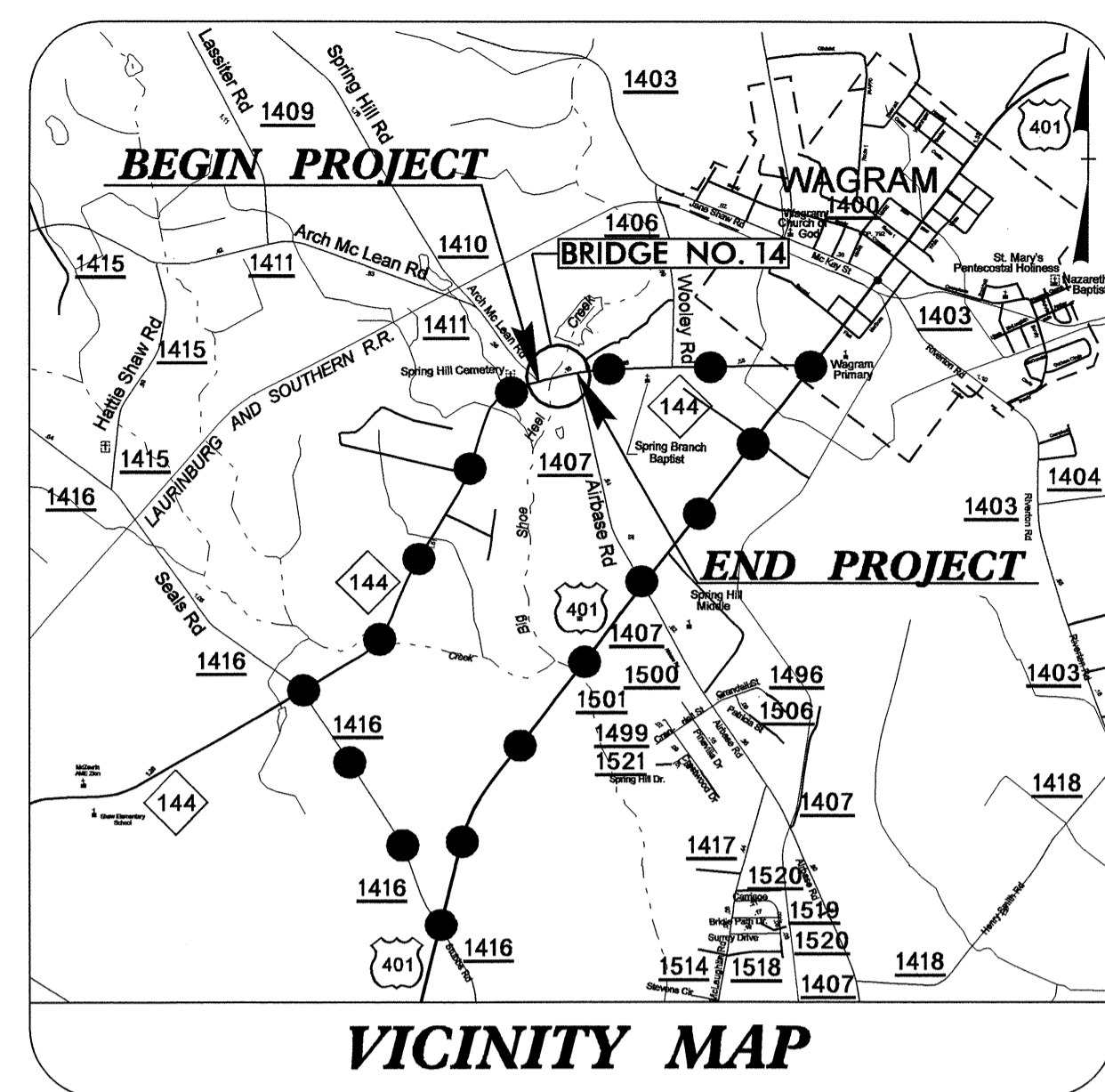


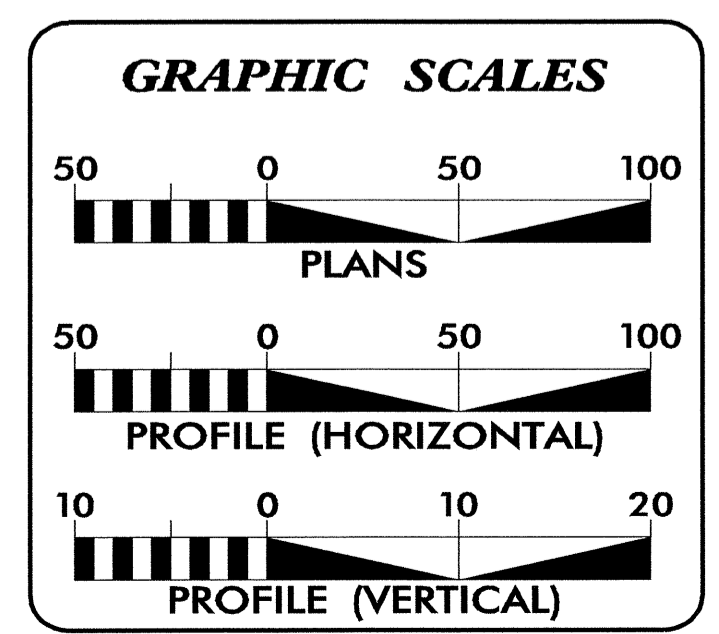
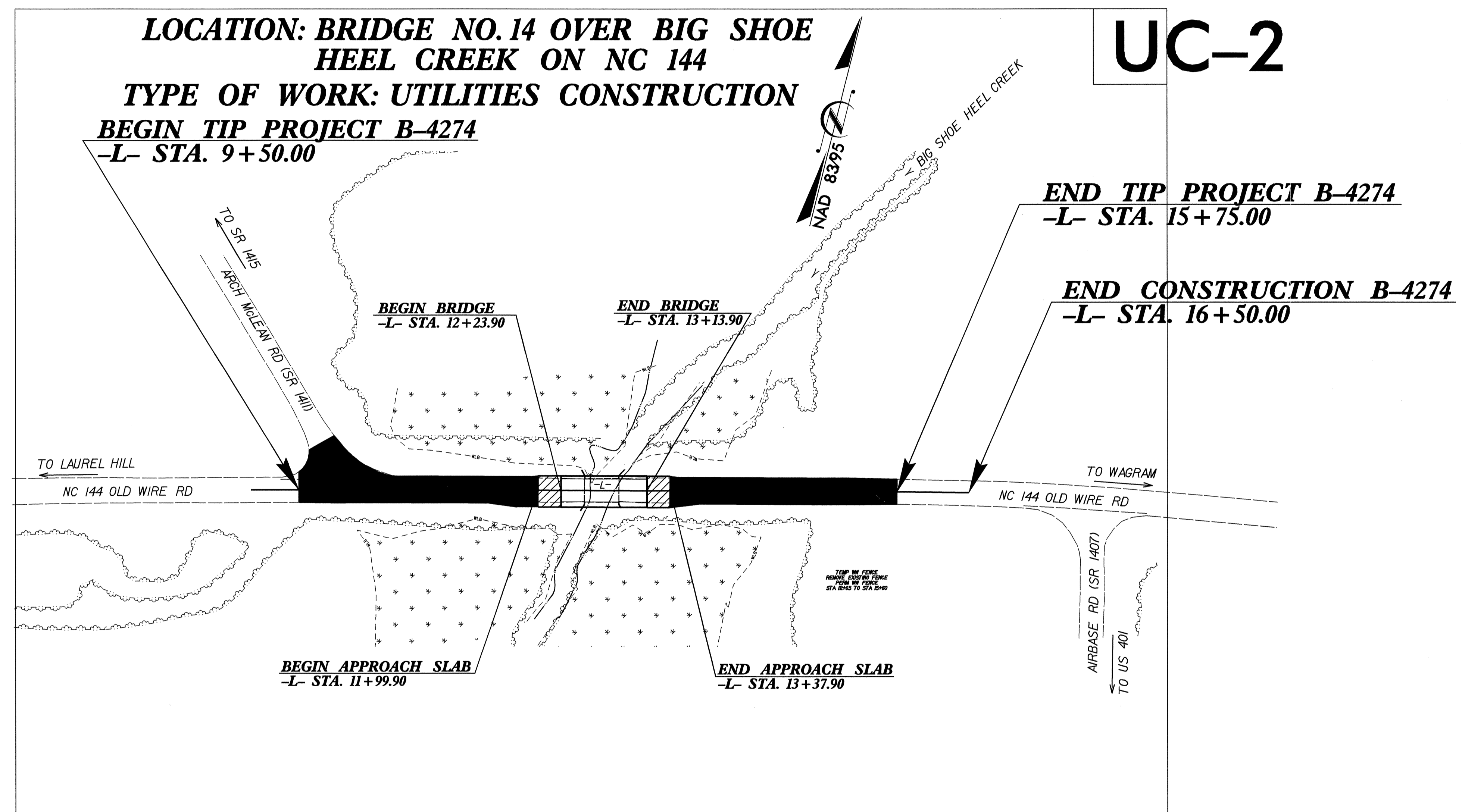
STATE OF NORTH CAROLINA
DIVISION OF HIGHWAYS

**UTILITY CONSTRUCTION PLANS
SCOTLAND COUNTY**

TIP PROJECT: B-4274



●●● OFFSITE DETOUR

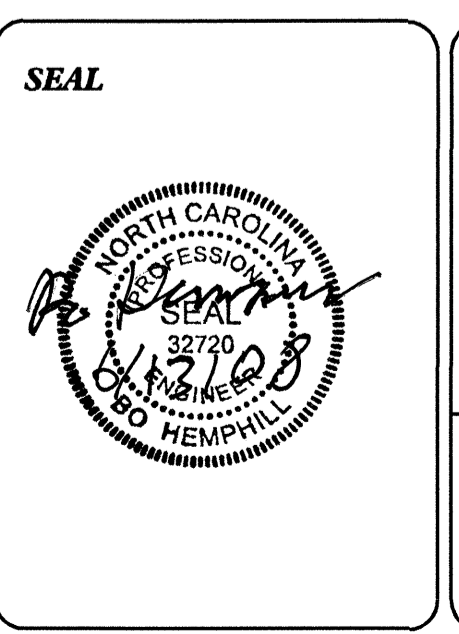


INDEX OF SHEETS

SHEET NO.	DESCRIPTION
UC-1	TITLE SHEET
UC-2	UTILITY CONSTRUCTION PLAN SHEETS
UC-3	DETAILS SHEET

WATER AND SEWER OWNERS ON PROJECT

(1) Scotland County Water District



PREPARED IN THE OFFICE OF:
**DIVISION OF HIGHWAYS
PROJECT SERVICES
UTILITIES SECTION**

1591 MAIL SERVICES CENTER
RALEIGH, NC 27699-1591
PHONE (919) 250-4128
FAX (919) 250-4119

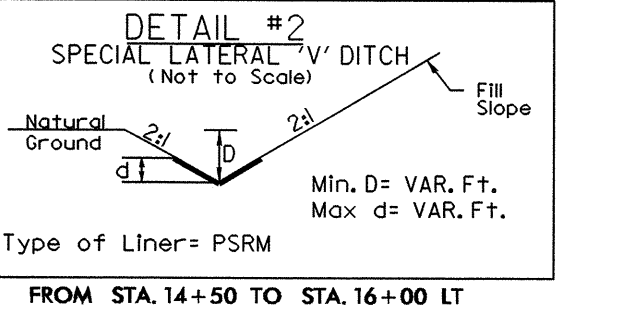
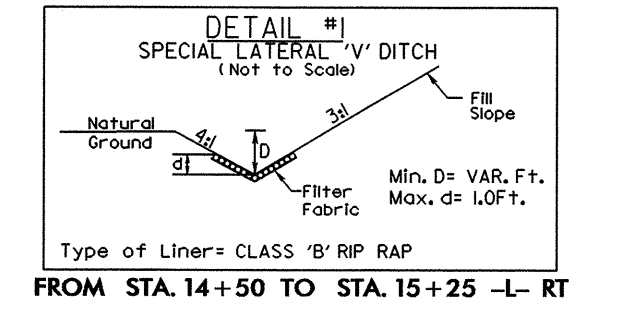
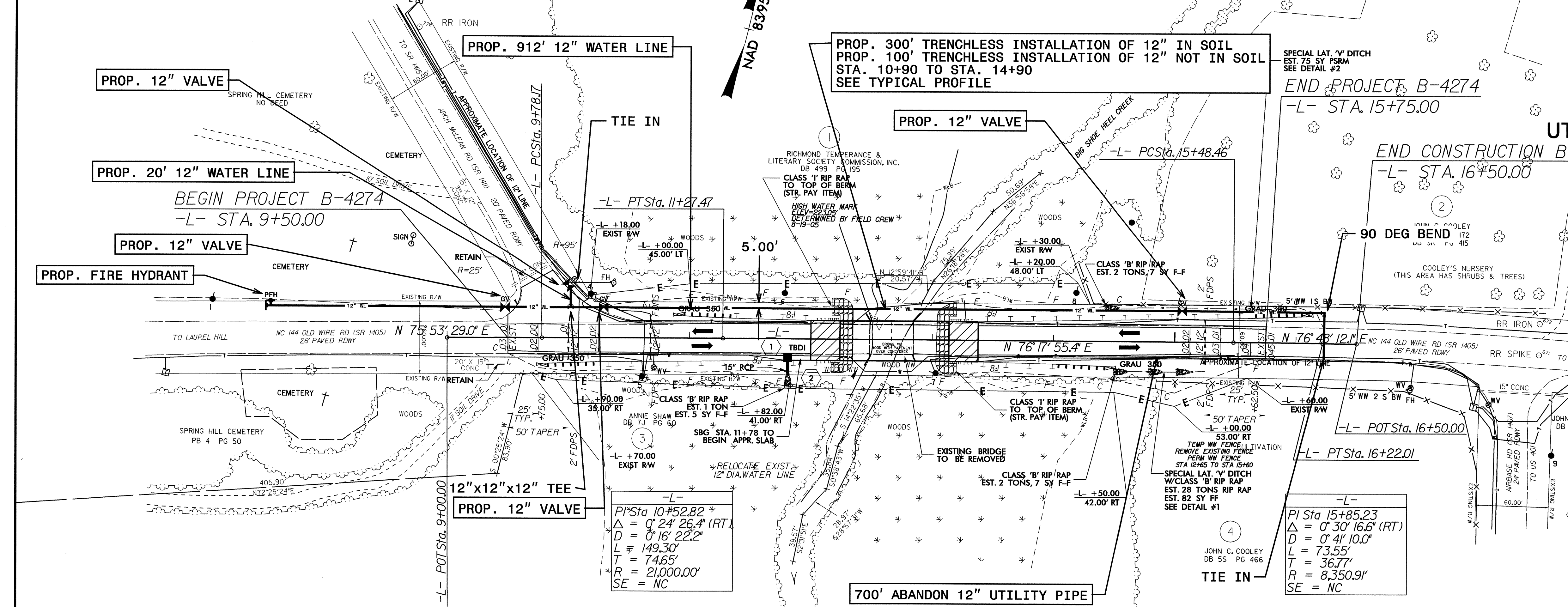
Roger Worthington, P.E. UTILITIES SECTION ENGINEER
Carl Barclay, P.E. UTILITIES SQUAD LEADER PROJECT ENGINEER
Bo Hemphill, P.E. UTILITIES PROJECT DESIGNER

13-JUN-2008 11:06
F:\utilities\rdy\proj\B4274\ut_title_uc1.psh.dgn
\$\$\$\$\$USERNAME\$\$\$\$\$

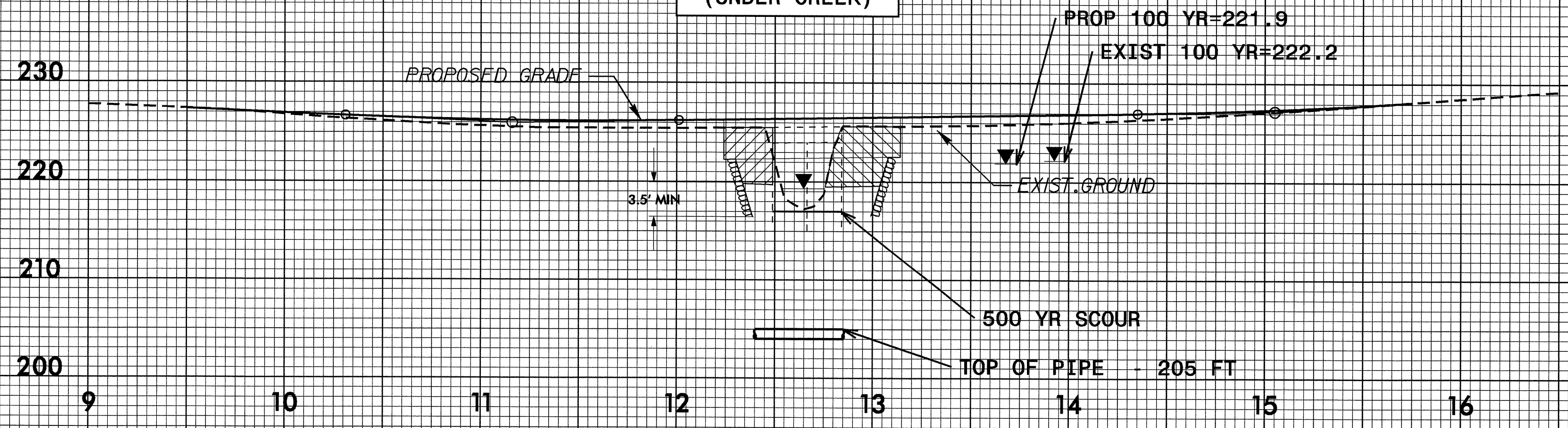
8/17/99

NOTE: THE INNER DIAMETER OF WATER PIPE SHALL BE GREATER THAN OR EQUAL TO THE SPECIFIED NOMINAL DIAMETER OF THE PIPE.

PROJECT REFERENCE NO.	SHEET NO.
B-4274	UC-2
DESIGNED BY: BH	
DRAWN BY: BH	
CHECKED BY: ARK	
APPROVED BY: ARK	
REVISED:	
NORTH CAROLINA DEPARTMENT OF TRANSPORTATION	
PROJECT SERVICES UNIT PHONE: (919)250-4128 FAX: (919)250-4119	



TYPICAL PROFILE (UNDER CREEK)

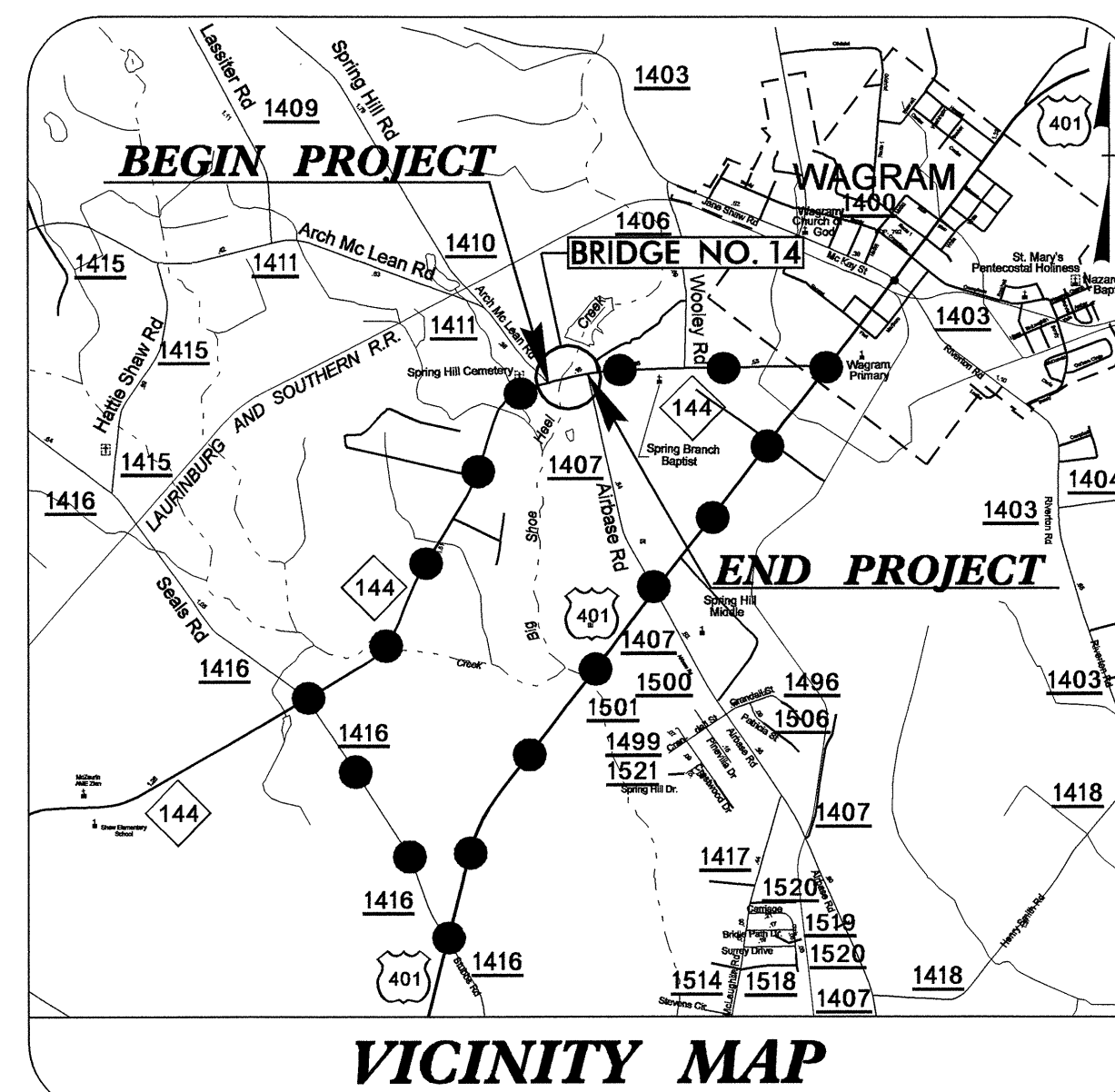


REVISIONS

STATE OF NORTH CAROLINA
DIVISION OF HIGHWAYS

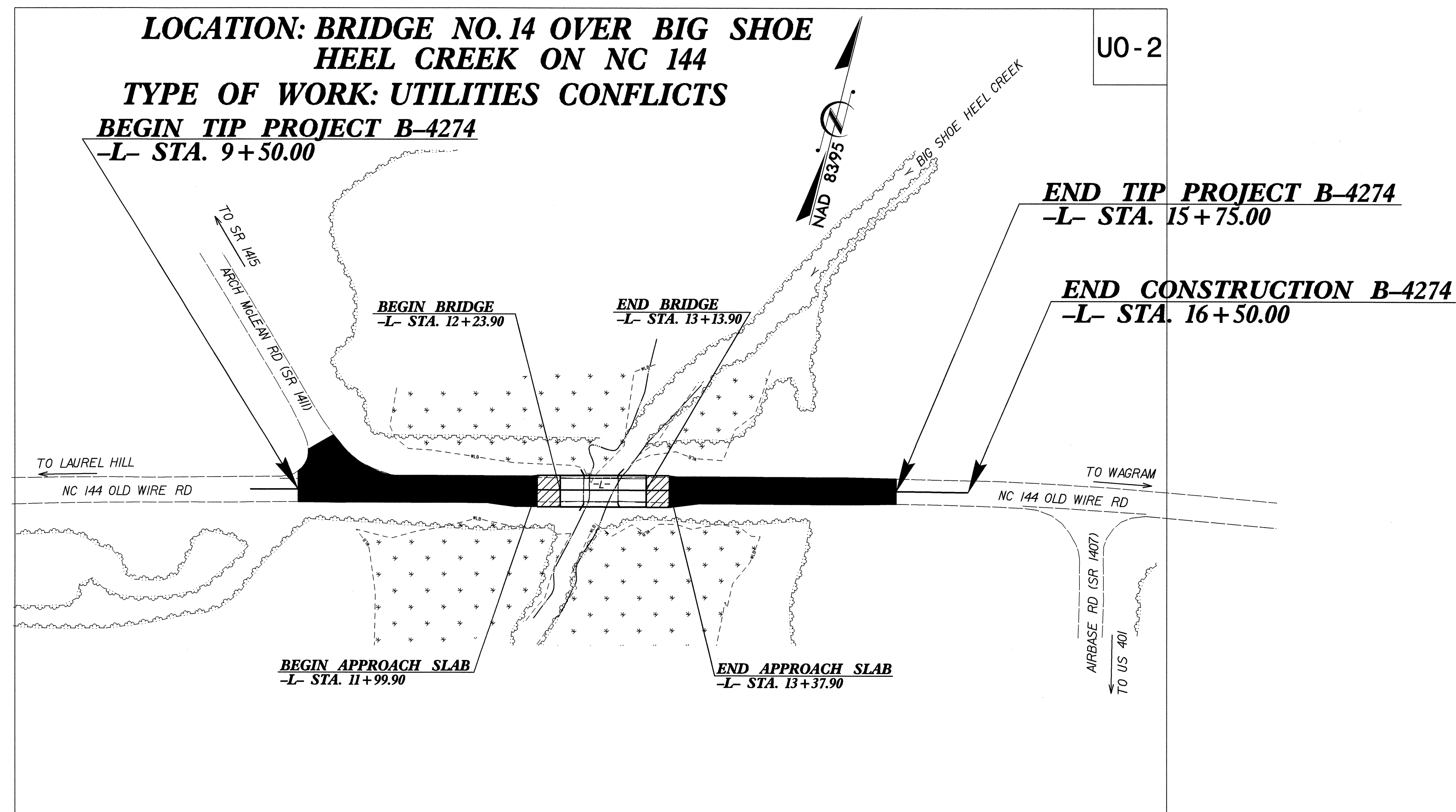
UTILITIES BY OTHERS PLANS
SCOTLAND COUNTY

TIP PROJECT: B-4274



● OFFSITE DETOUR

LOCATION: BRIDGE NO. 14 OVER BIG SHOE
HEEL CREEK ON NC 144
TYPE OF WORK: UTILITIES CONFLICTS
BEGIN TIP PROJECT B-4274
-L- STA. 9+50.00

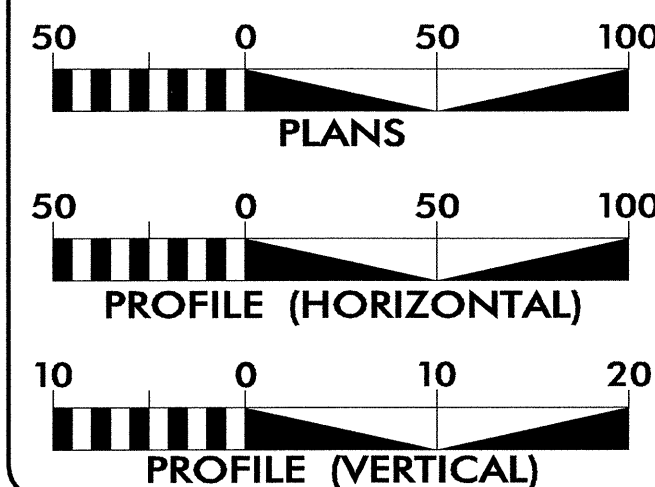


UO-2

END TIP PROJECT B-4274
-L- STA. 15+75.00

END CONSTRUCTION B-4274
-L- STA. 16+50.00

GRAPHIC SCALES

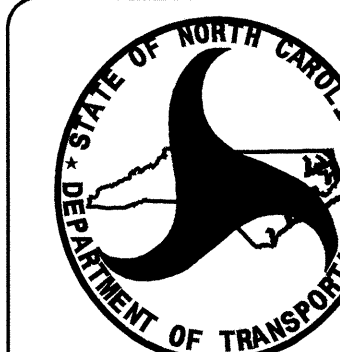


INDEX OF SHEETS

SHEET NO.	DESCRIPTION
UC-1	TITLE SHEET
UC-2	UTILITIES BY OTHERS PLAN SHEET

UTILITY OWNERS ON PROJECT

- (1) Windstream Communications
- (2) Progress Energy



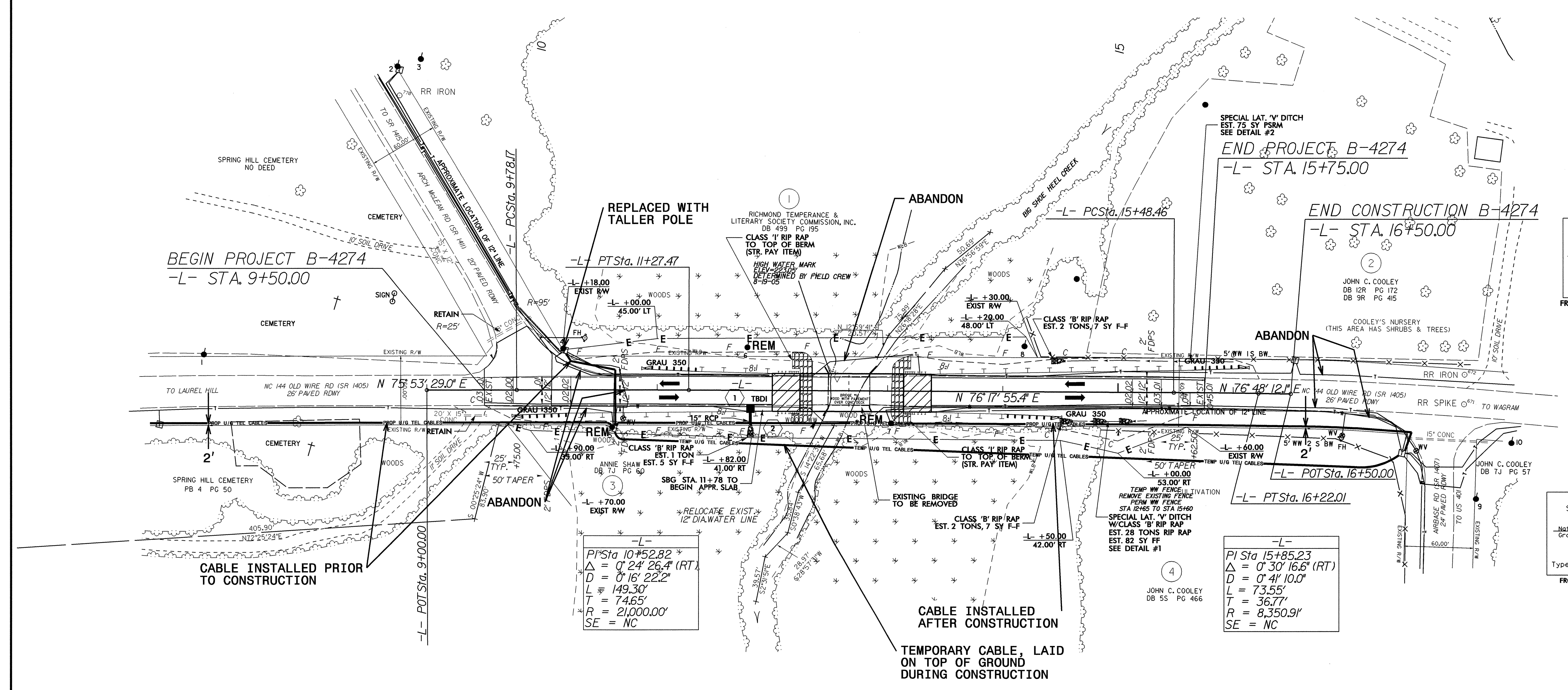
PREPARED IN THE OFFICE OF:
DIVISION OF HIGHWAYS
PROJECT SERVICES
UTILITIES SECTION
1591 MAIL SERVICES CENTER
RALEIGH NC 27699-1591
PHONE (919) 250-4128
FAX (919) 250-4119

Roger Worthington, P.E. UTILITIES SECTION ENGINEER
Carl Barclay, P.E. UTILITIES SQUAD LEADER PROJECT ENGINEER
Bo Hemphill, P.E. UTILITIES PROJECT DESIGNER

UTILITIES BY OTHERS

NOTE:
 ALL PROPOSED UTILITY WORK
 SHOWN ON THIS SHEET WILL
 BE DONE BY OTHERS

5/14/99



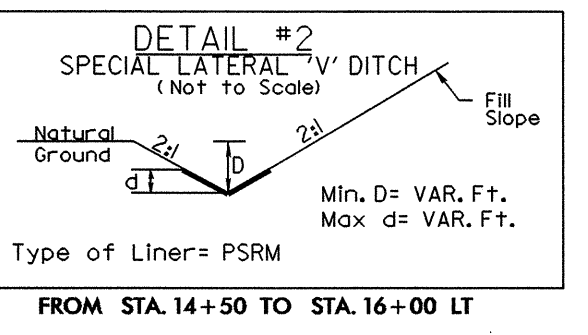
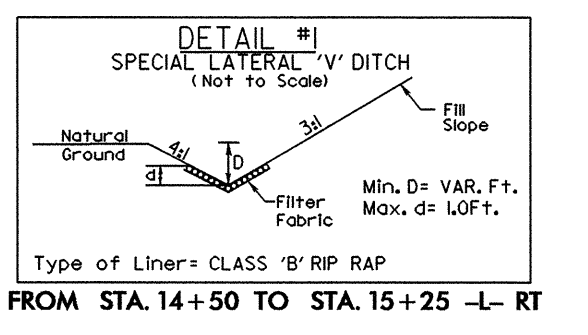
BEGIN PROJECT B-4274
 -L- STA. 9+50.00

END PROJECT B-4274
 -L- STA. 15+75.00

END CONSTRUCTION B-4274
 -L- STA. 16+50.00

-L-
 PI Sta 10+52.82
 $\Delta = 0' 24' 26.4''$ (RT)
 $D = 0' 16' 22.2''$
 $L = 149.30'$
 $T = 74.65'$
 $R = 21,000.00'$
 SE = NC

-L-
 PI Sta 15+85.23
 $\Delta = 0' 30' 16.6''$ (RT)
 $D = 0' 41' 10.0''$
 $L = 73.55'$
 $T = 36.77'$
 $R = 8,350.91'$
 SE = NC



12-JUN-2008 14:07
 \\c:\projects\B-4274\ut_04_uo2_psh.dgn