

STATE OF NORTH CAROLINA  
DIVISION OF HIGHWAYS

STATE PROJECT REFERENCE NO.	SHEET NO.
B-4552	TCP-01

**PLAN FOR PROPOSED  
TRAFFIC CONTROL, MARKING & DELINEATION  
IREDELL COUNTY**

B-4552

**ROADWAY STANDARD DRAWINGS**

THE FOLLOWING ROADWAY STANDARDS AS APPEAR IN "ROADWAY STANDARD DRAWINGS"- ROADWAY DESIGN UNIT-N.C. DEPARTMENT OF TRANSPORTATION-RALEIGH, N.C., DATED JULY 2006 ARE APPLICABLE TO THIS PROJECT AND BY REFERENCE HEREBY ARE CONSIDERED A PART OF THESE PLANS:

STD. NO.	TITLE
1101.03	TEMPORARY ROAD CLOSURES
1110.01	STATIONARY WORK ZONE SIGNS
1145.01	BARRICADES
1205.01	PAVEMENT MARKINGS - LINE TYPES & OFFSETS
1205.02	PAVEMENT MARKINGS - 2 LANE & MULTILANE ROADWAYS
1205.12	PAVEMENT MARKINGS - BRIDGES
1261.01	GUARDRAIL & BARRIER DELINEATOR SPACING
1261.02	GUARDRAIL & BARRIER DELINEATOR TYPES
1262.01	GUARDRAIL END DELINEATION
1264.01	OBJECT MARKERS
1264.02	PLACEMENT OF OBJECT MARKERS

**INDEX OF SHEETS**

SHEET NO.	TITLE
TCP-01	LIST OF APPLICABLE ROADWAY STANDARD DRAWINGS, LEGEND, INDEX OF SHEETS AND FINAL PAVEMENT MARKING SCHEDULE
TCP-02	GENERAL NOTES AND PHASING
TCP-03	DETOUR ROUTE AND SIGNING
SD-1	SPECIAL SIGN DESIGN

**LEGEND**

- GENERAL**
- DIRECTION OF TRAFFIC FLOW
  - NORTH ARROW
  - PROPOSED PVMT. EXIST. PVMT.
  - WORK AREA
  - REMOVAL OF EXISTING PAVEMENT

- TRAFFIC CONTROL DEVICES**
- TYPE I BARRICADE
  - TYPE II BARRICADE
  - TYPE III BARRICADE
  - CONE
  - DRUM
  - FLASHING ARROW PANEL (TYPE C)
  - TYPE 'B' WARNING LIGHT
  - STATIONARY SIGN
  - PORTABLE SIGN
  - STATIONARY OR PORTABLE SIGN
  - WARNING FLAGS
  - CRASH CUSHION
  - CHANGEABLE MESSAGE SIGN
  - TRUCK MOUNTED IMPACT ATTENUATOR (TMIA)
  - POLICE
  - FLAGGER

- PAVEMENT MARKINGS**
- CRYSTAL/CRYSTAL PAVEMENT MARKER
  - YELLOW/YELLOW PAVEMENT MARKER
  - CRYSTAL/RED PAVEMENT MARKER
  - PAVEMENT MARKING SYMBOLS

**FINAL PAVEMENT MAKING SCHEDULE**

DESCRIPTION	QUANTITY BREAKDOWN		TOTAL QUANTITY	
		PAINT (4")		
WHITE EDGELINE	2600	LF		
YELLOW DOUBLE CENTER	2600	LF		
			TOTAL	5200 LF

TIP PROJECT:

24-APR-2008 11:46 \\dot\dfsroot\01\Proj\TIPProjects-b\4552\TrafficControl\Top\4552\_top\_top01\_tsh.dgn  
akpatel AT WZTC224097

APPROVED:	PLAN PREPARED BY: N.C.D.O.T. WORK ZONE TRAFFIC CONTROL UNIT
DATE: April 28, 2008	
SEAL	STUART BOURNE, P.E. TRAFFIC CONTROL ENGINEER
	J. STEVE KITE, P.E. TRAFFIC CONTROL PROJECT ENGINEER
	DON PARKER TRAFFIC CONTROL PROJECT DESIGN ENGINEER
	ASHVIN PATEL TRAFFIC CONTROL DESIGN ENGINEER / TECHNICIAN

## GENERAL NOTES

ADAPT THE TRAFFIC CONTROL PLANS, WHEN DIRECTED BY THE ENGINEER, TO MEET FIELD CONDITIONS TO PROVIDE SAFE AND EFFICIENT TRAFFIC MOVEMENT. CHANGES MAY BE REQUIRED WHEN PHYSICAL DIMENSIONS IN THE DETAIL DRAWINGS, STANDARD DETAILS AND ROADWAY DETAILS ARE NOT ATTAINABLE, OR RESULT IN DUPLICATE, OR UNDESIRED OVERLAPPING OF DEVICES. MODIFICATION MAY INCLUDE: MOVING, SUPPLEMENTING, COVERING OR REMOVAL OF DEVICES AS DIRECTED BY THE ENGINEER.

THE FOLLOWING GENERAL NOTES APPLY AT ALL TIMES FOR THE DURATION OF THE CONSTRUCTION PROJECT, EXCEPT WHEN OTHERWISE NOTED IN THE PLAN, OR DIRECTED BY THE ENGINEER.

### TRAFFIC PATTERN ALTERATIONS

- A) NOTIFY THE ENGINEER TWENTY ONE (21) CALENDAR DAYS PRIOR TO ANY TRAFFIC PATTERN ALTERATION.

### SIGNING

- B) STATE FORCES WILL BE RESPONSIBLE FOR PERMANENT SIGNING.
- C) PROVIDE DETOUR SIGNING WITHIN AND OFF THE PROJECT LIMITS.
- D) THE CONTRACTOR WILL COVER OR REMOVE ALL DETOUR SIGNS WITHIN AND OFF THE PROJECT LIMITS WHEN A DETOUR IS NOT IN OPERATION.
- E) ENSURE ALL NECESSARY SIGNING IS IN PLACE PRIOR TO ALTERING ANY TRAFFIC PATTERN.

### TRAFFIC CONTROL DEVICES

- F) PLACE TYPE III BARRICADES, WITH "ROAD CLOSED" SIGN R11-2 ATTACHED, OF SUFFICIENT LENGTH TO CLOSE ENTIRE ROADWAY. STAGGER OR OVERLAP BARRICADES TO ALLOW FOR INGRESS OR EGRESS.

### PAVEMENT MARKINGS AND MARKERS

- G) INSTALL PAVEMENT MARKINGS AND PAVEMENT MARKERS ON THE FINAL SURFACE AS FOLLOWS:

ROAD NAME	MARKING	MARKER
SR 1526	PAINT	NONE




- H) PLACE AT LEAST TWO APPLICATIONS OF PAINT PAVEMENT MARKINGS ON THE FINAL WEARING SURFACE ON NEW ASPHALT PAVEMENT. PLACE ADDITIONAL APPLICATIONS OF PAINT UPON SUFFICIENT DRYING TIME, AS DETERMINED BY THE ENGINEER.
- I) TIE PROPOSED PAVEMENT MARKING LINES TO EXISTING PAVEMENT MARKING LINES.

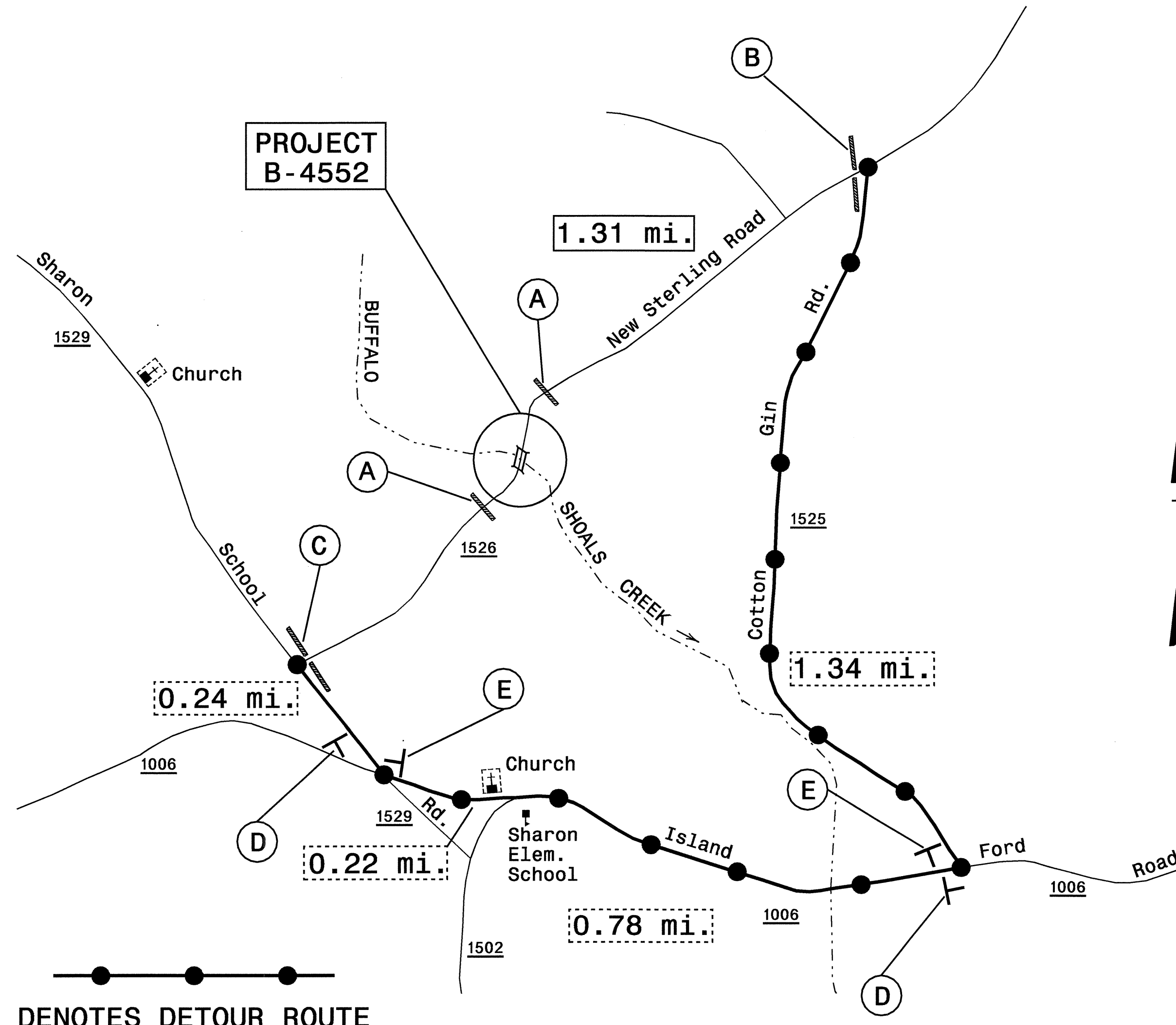
## PHASING

NOTE: MAINTAIN LOCAL ACCESS TO RESIDENTS AT ALL TIMES DURING CONSTRUCTION.

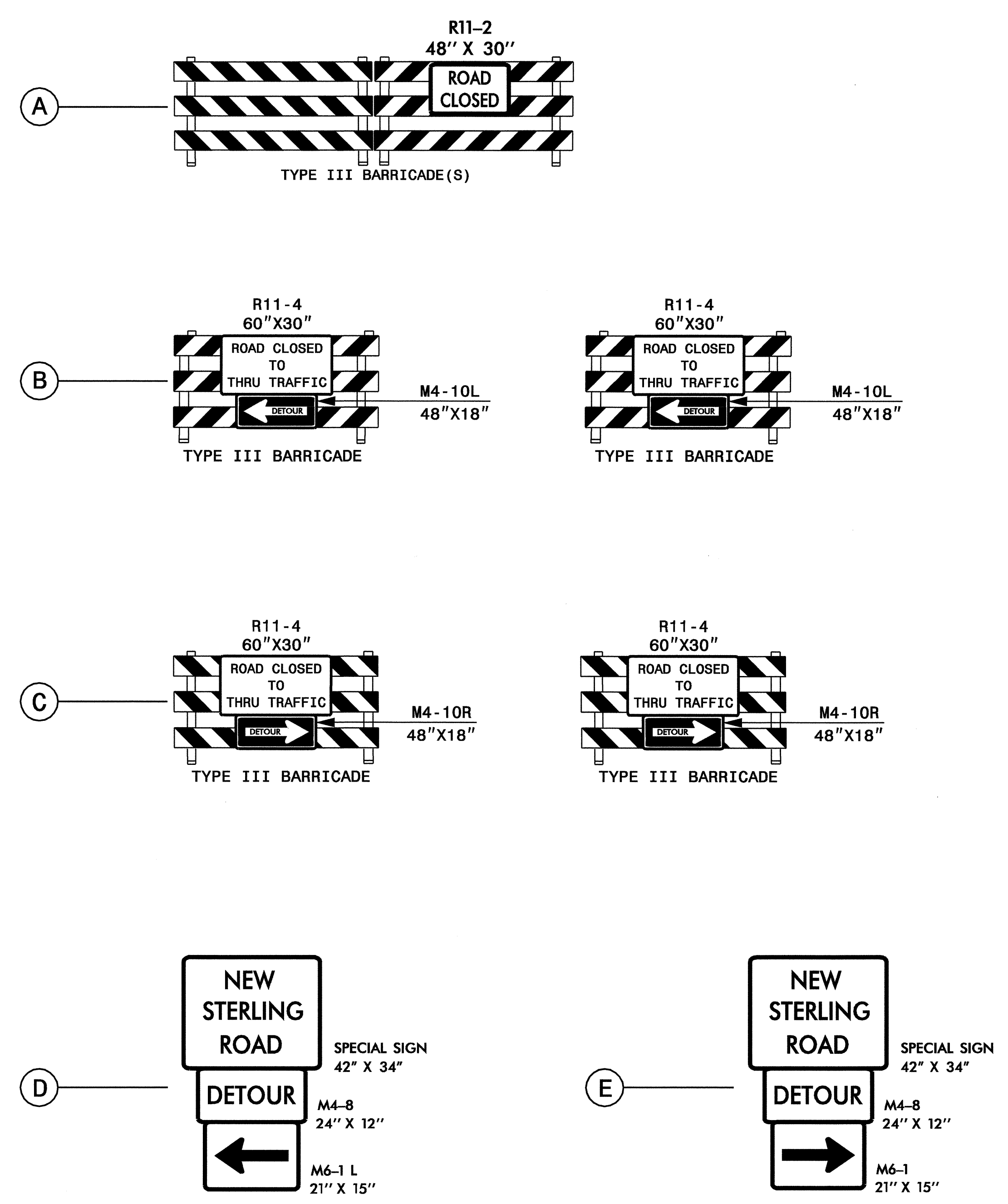
- 1) USING ROADWAY STANDARD DRAWING 1101.03, SHEET 1 OF 9 AND TCP-03, CLOSE SR 1526 AND PLACE TRAFFIC ON DETOUR ROUTE.
- 2) REMOVE EXISTING STRUCTURE AND CONSTRUCT PROPOSED ROADWAY, BRIDGE AND APPROACHES, UP TO AND INCLUDING THE FINAL LAYER OF SURFACE COURSE. PLACE FINAL PAVEMENT MARKINGS ON FINAL LAYER OF SURFACE COURSE AND TIE IN WITH EXISTING MARKINGS.
- 3) REMOVE ALL TRAFFIC CONTROL DEVICES AND REOPEN SR 1526 TO FINAL TRAFFIC PATTERN.

24-APR-2008 11:49  
 \\dot\dfs\00101\Pro\TIP\Projects-b\4552\tr\afficoontrol\top\b4552\_top\_top02\_gnotes.dgn  
 ckpatel AT WZTC224097

APPROVED:  DATE: 4/23/08 	<h3>GENERAL NOTES AND PHASING</h3>	<table border="1" style="width: 100%; border-collapse: collapse;"> <tr> <td>SCALE:</td> <td>NONE</td> </tr> <tr> <td>DATE:</td> <td>11/07</td> </tr> <tr> <td>DWG. BY:</td> <td>AKP</td> </tr> <tr> <td>DESIGN BY:</td> <td>AKP</td> </tr> <tr> <td>REVIEWED BY:</td> <td>DAP</td> </tr> </table>	SCALE:	NONE	DATE:	11/07	DWG. BY:	AKP	DESIGN BY:	AKP	REVIEWED BY:	DAP
SCALE:	NONE											
DATE:	11/07											
DWG. BY:	AKP											
DESIGN BY:	AKP											
REVIEWED BY:	DAP											
												
		<table border="1" style="width: 100%; border-collapse: collapse;"> <tr> <th colspan="2">REVISIONS</th> </tr> <tr> <td style="width: 50%; height: 20px;"></td> <td style="width: 50%;"></td> </tr> <tr> <td style="height: 20px;"></td> <td></td> </tr> </table>	REVISIONS									
REVISIONS												



NOTE: SEE RSD 1101.03, SHEET 1 OF 9 FOR ADVANCE WARNING SIGNAGE AND BARRICADE PLACEMENT.



24-APR-2008 11:48 \\dot\officecontrol\proj\TIP\projects-b\4552\trafficcontrol\top\_b4552\_top\_tcp03\_detour.dgn

APPROVED:  DATE: 4/29/08	<b>DETOUR ROUTE AND SIGNING</b>	
SCALE: NONE		REVISIONS
DATE: 11/07		
DWG. BY: SJS/AKP		
DESIGN BY: SJS/AKP		
REVIEWED BY: DAP		