

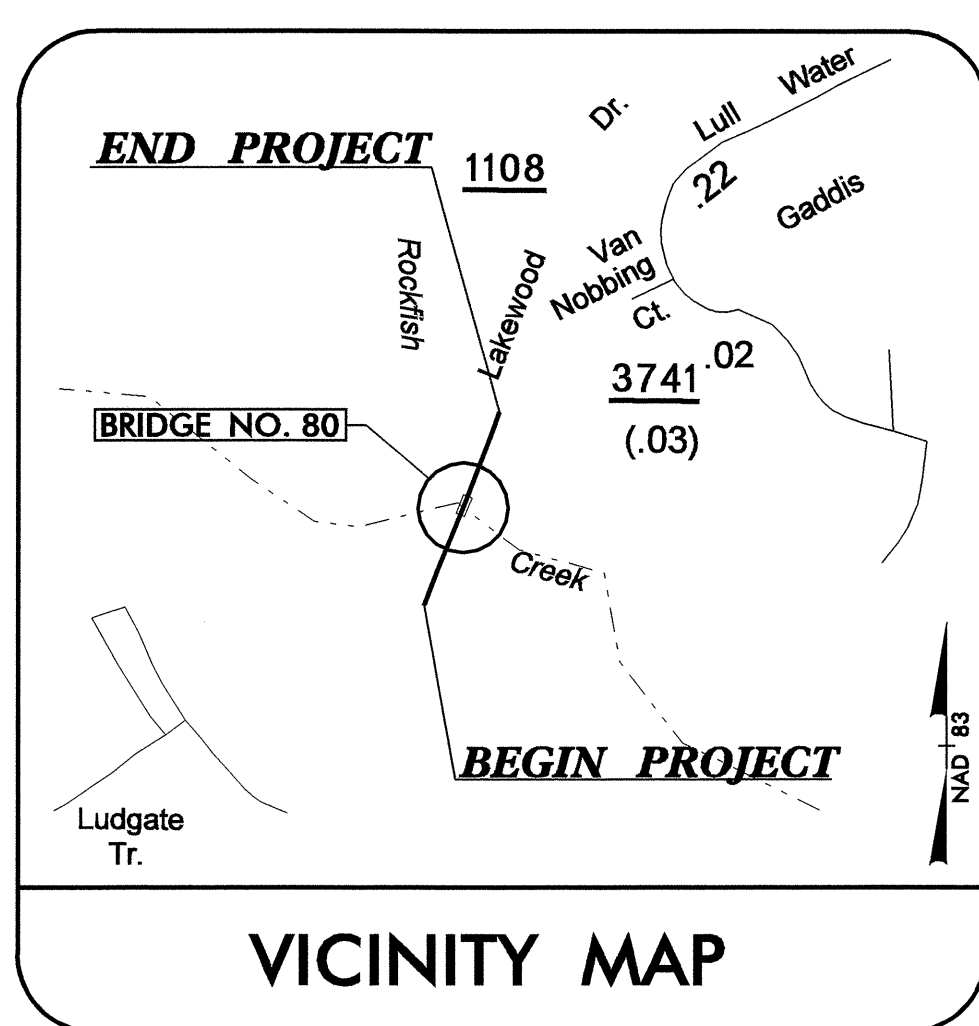
T.I.P. NO.	SHEET NO.
B-4092	UO-1

STATE OF NORTH CAROLINA
DIVISION OF HIGHWAYS

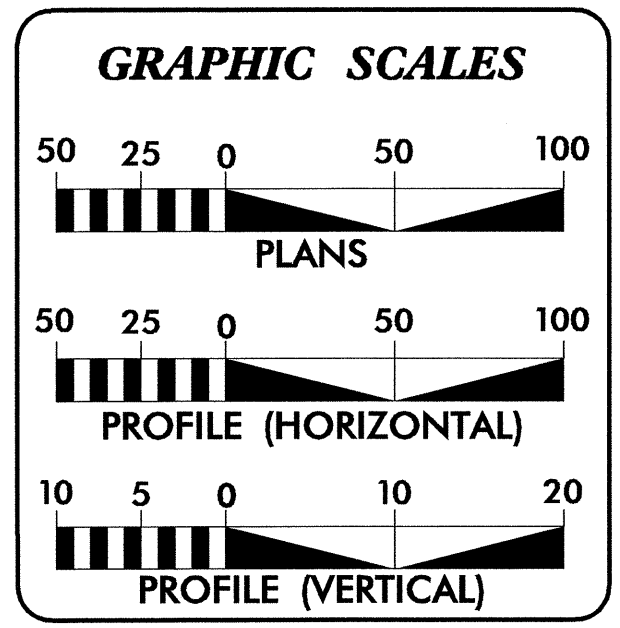
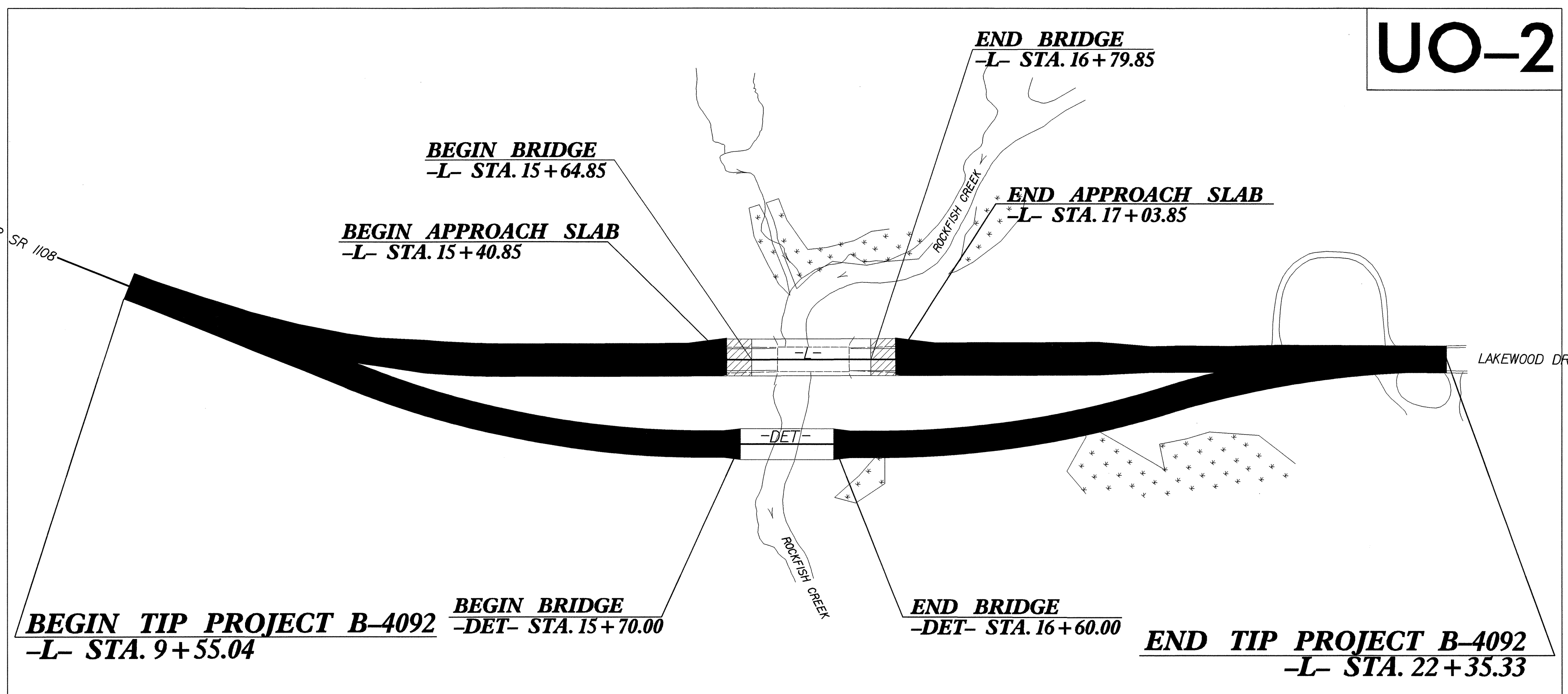
**UTILITY BY OTHERS PLANS
CUMBERLAND COUNTY**

**LOCATION: BRIDGE NO. 80 ON SR 1108 (LAKEWOOD DR.)
OVER LITTLE ROCKFISH CREEK**

TYPE OF WORK: UTILITIES BY OTHERS



TIP PROJECT: B-4092



INDEX OF SHEETS

SHEET NO.	DESCRIPTION
UO-1	TITLE SHEET
UO-2	UTILITY BY OTHERS PLAN SHEET

- UTILITY OWNERS ON PROJECT**
- (1) POWER DISTRIBUTION - LUMBEE RIVER EMC
 - (2) TELEPHONE AND FIBER OPTIC - EMBARQ
 - (3) CABLE TV - TIME WARNER CABLE
 - (4) WATER - CITY OF FAYETTEVILLE PWC

PREPARED IN THE OFFICE OF:
**DIVISION OF HIGHWAYS
PROJECT SERVICES
UTILITY SECTION**

1591 MAIL SERVICES CENTER
RALEIGH NC 27699-1591
PHONE (919) 250-4128
FAX (919) 250-4119

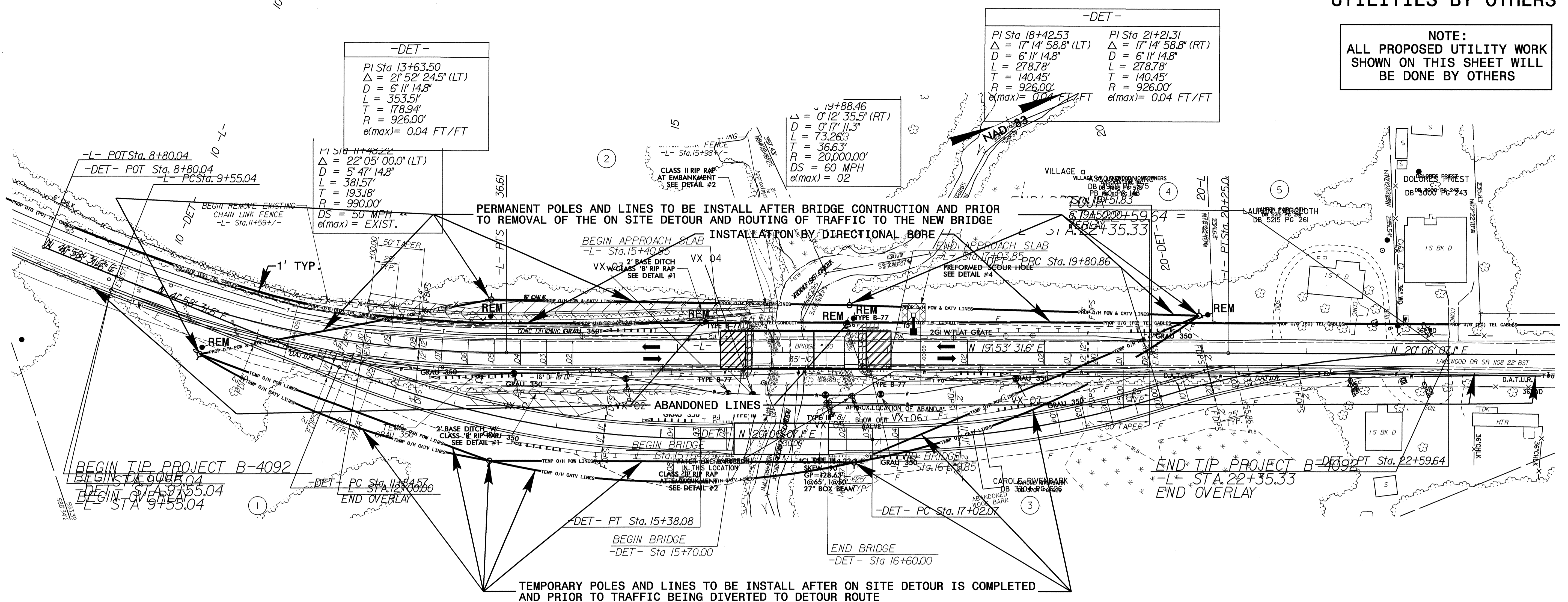
Roger Worthington, P.E. UTILITIES SECTION ENGINEER
R. B. Wilkins, P.E. UTILITIES SQUAD LEADER PROJECT ENGINEER
John A. Nigro, P.E. UTILITIES PROJECT DESIGNER

06-MAY-2008 10:30
r:\utilities\yrdy\ut\proj\b4092\ut_title_uol_psh.dgn
\$\$\$\$\$USERNAME\$\$\$\$\$

UTILITIES BY OTHERS

NOTE:
ALL PROPOSED UTILITY WORK
SHOWN ON THIS SHEET WILL
BE DONE BY OTHERS

5/14/99



PERMANENT POLES AND LINES TO BE INSTALL AFTER BRIDGE CONSTRUCTION AND PRIOR TO REMOVAL OF THE ON SITE DETOUR AND ROUTING OF TRAFFIC TO THE NEW BRIDGE INSTALLATION BY DIRECTIONAL BORE

TEMPORARY POLES AND LINES TO BE INSTALL AFTER ON SITE DETOUR IS COMPLETED AND PRIOR TO TRAFFIC BEING DIVERTED TO DETOUR ROUTE