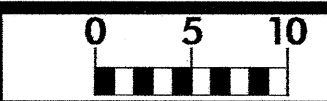
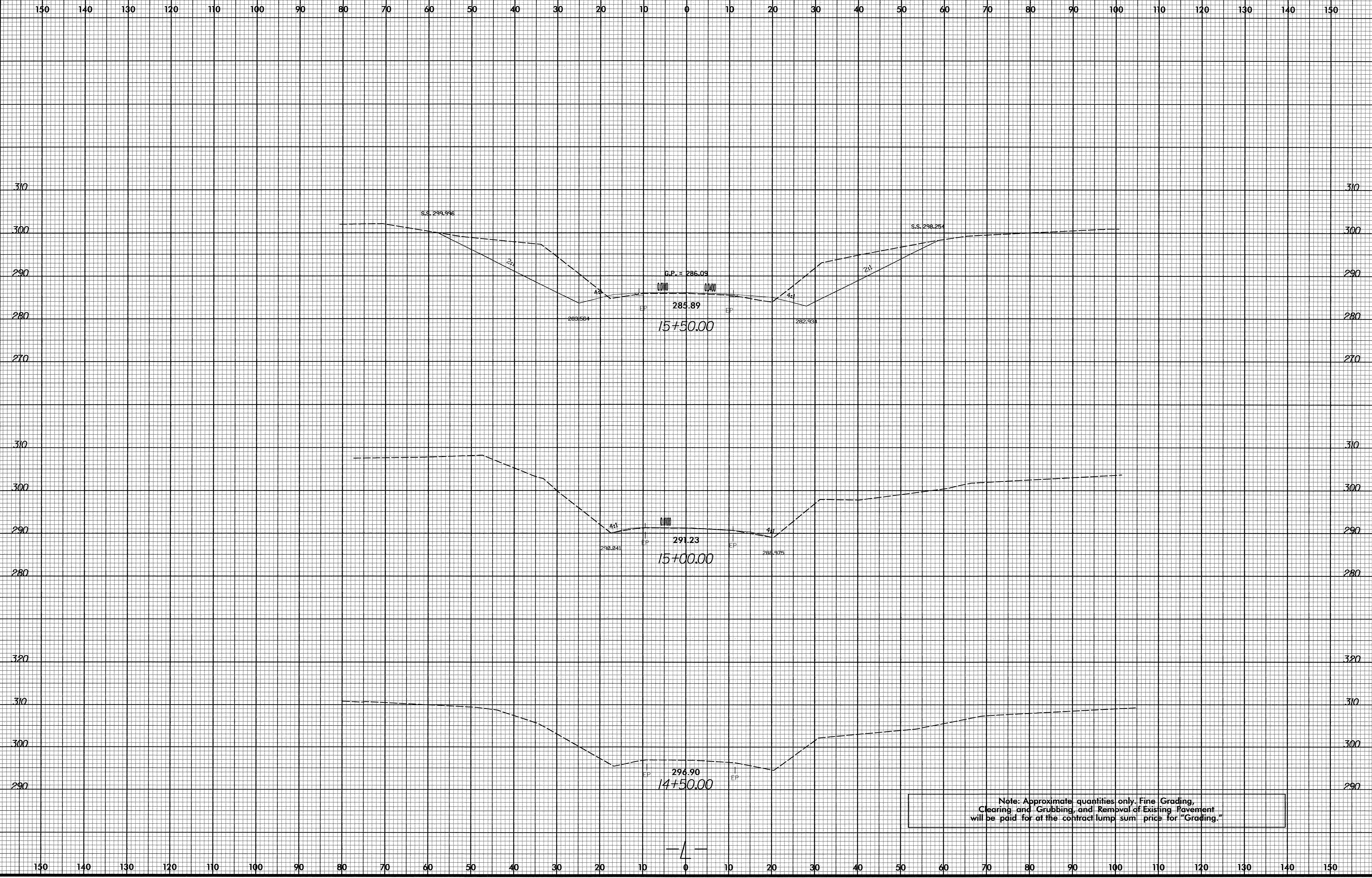


8/23/99

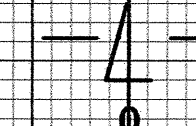


PROJ. REFERENCE NO. B-3707 SHEET NO. X-2

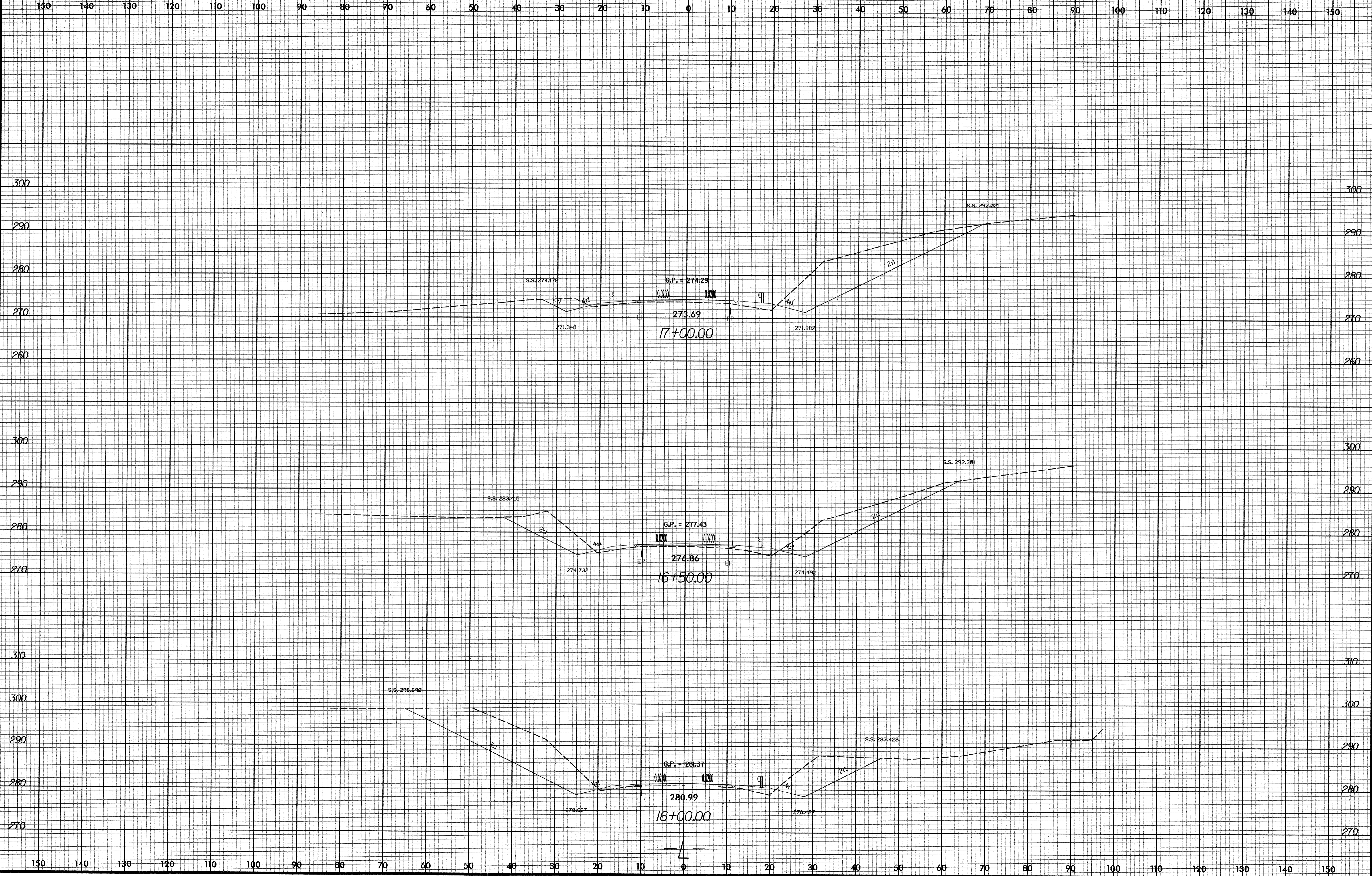


Note: Approximate quantities only. Fine Grading, Clearing and Grubbing, and Removal of Existing Pavement will be paid for at the contract lump sum price for "Grading."

2/27/2008 10:00:00 AM X:\Projects\B3707\rdy_xpl.dgn

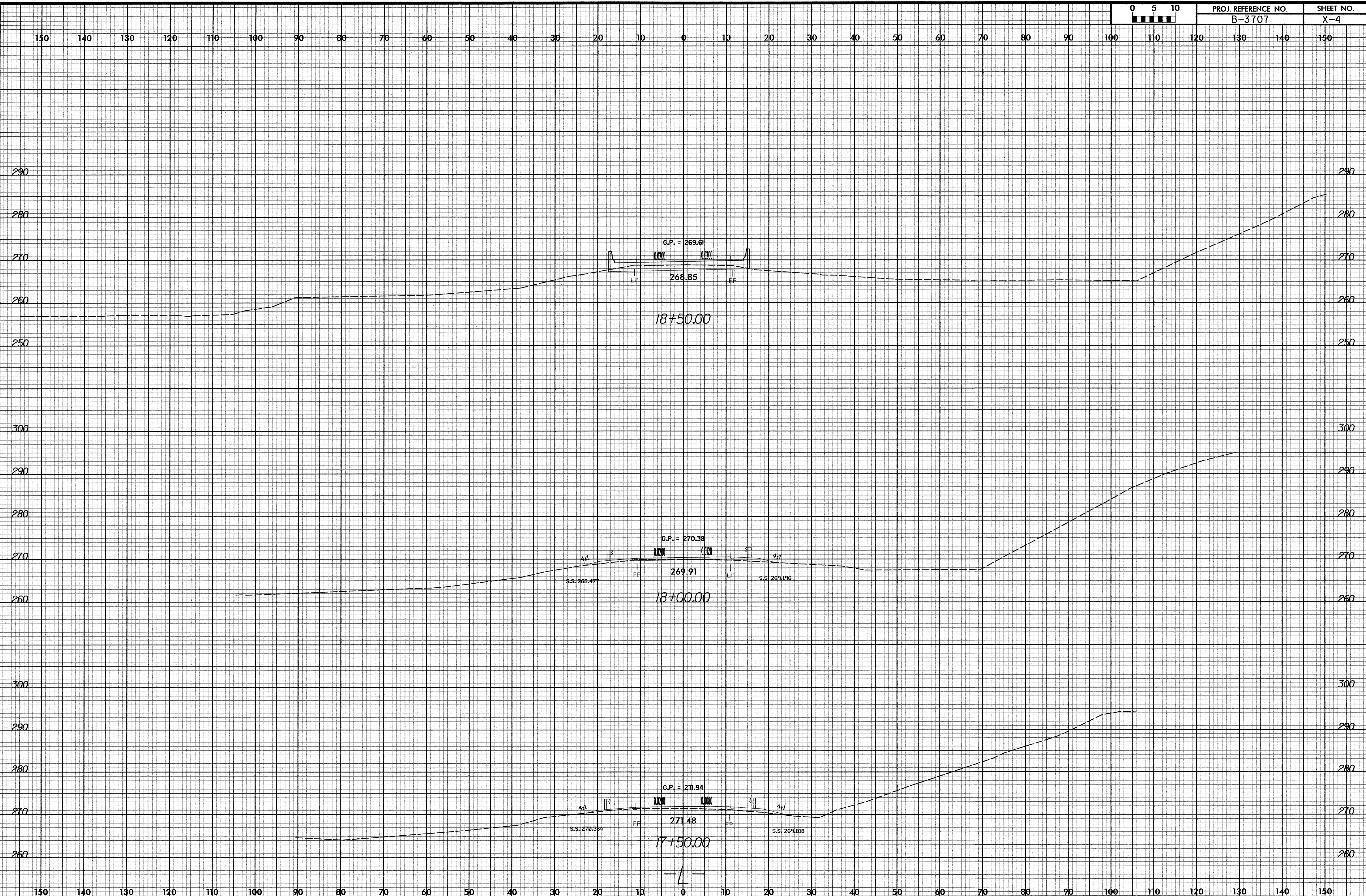


8/23/99

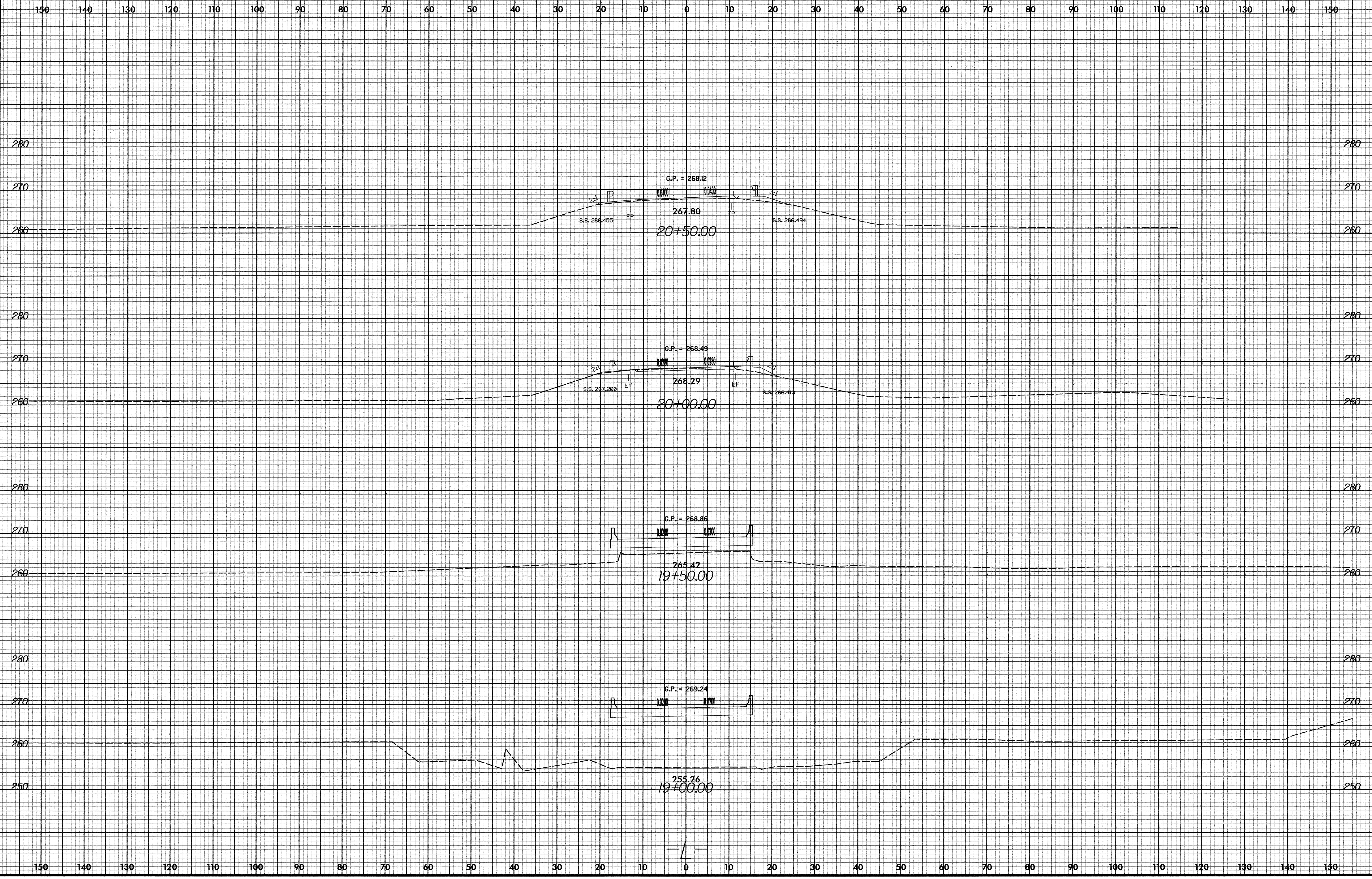
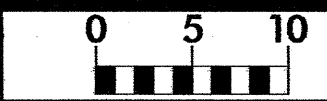


2/27/2008
R:\Projects\A\Sec\163707_rdy_xpl.dgn
K & Associates, P.C.

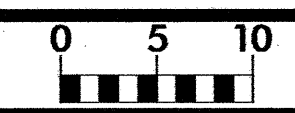
8/23/99



2/27/2008
2:\osway\Xco\3707_rdy_xpl.dgn
20:48:53



8/23/99



PROJ. REFERENCE NO.	SHEET NO.
B-3707	X-7

150 140 130 120 110 100 90 80 70 60 50 40 30 20 10 0 10 20 30 40 50 60 70 80 90 100 110 120 130 140 150

270 270

260 260

270 270

260 260

266.18
24+00.00

266.06
23+50.00

— 1 —

2/27/2008
K:\p0909way\Xsc\p2707_rdy_xpl.dgn

150 140 130 120 110 100 90 80 70 60 50 40 30 20 10 0 10 20 30 40 50 60 70 80 90 100 110 120 130 140 150