

TIP PROJECT: B-3707

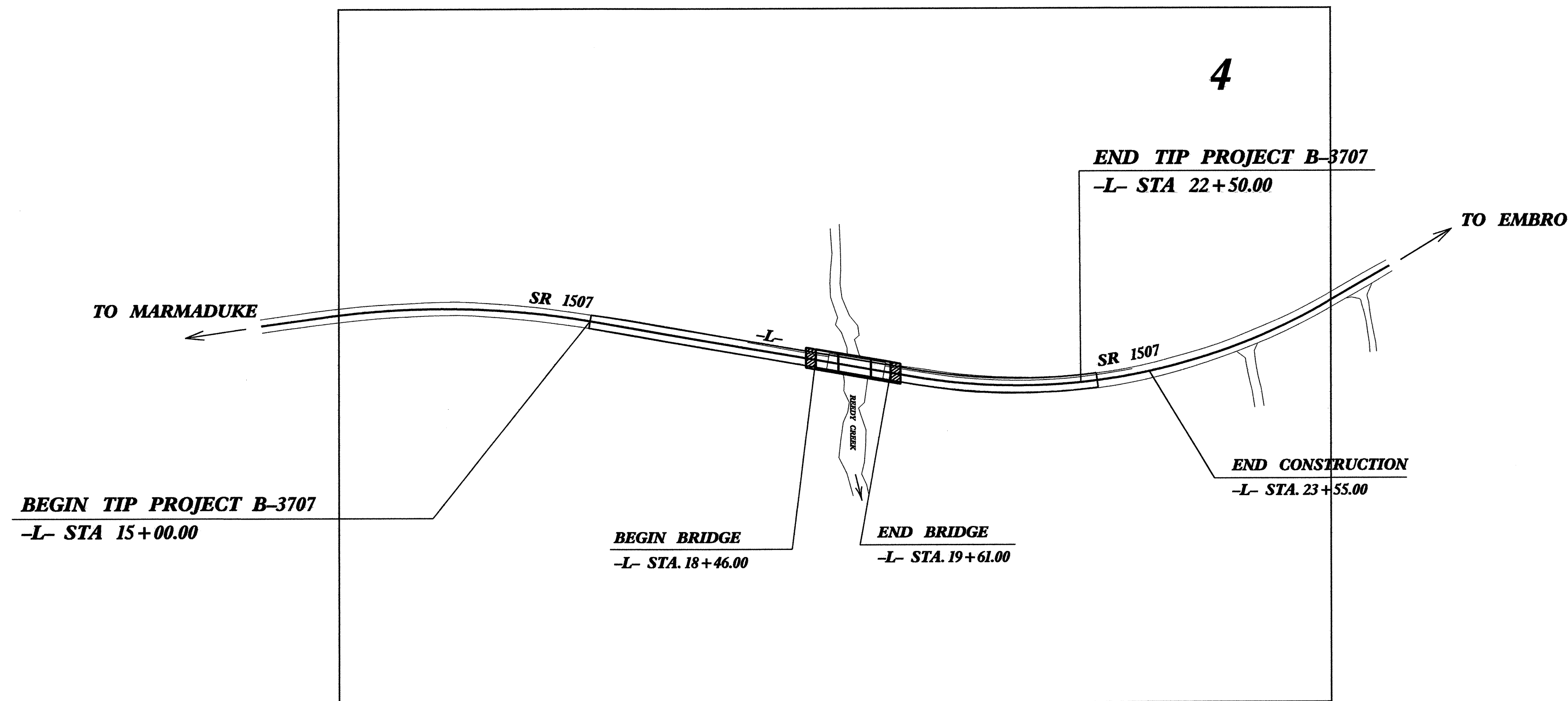
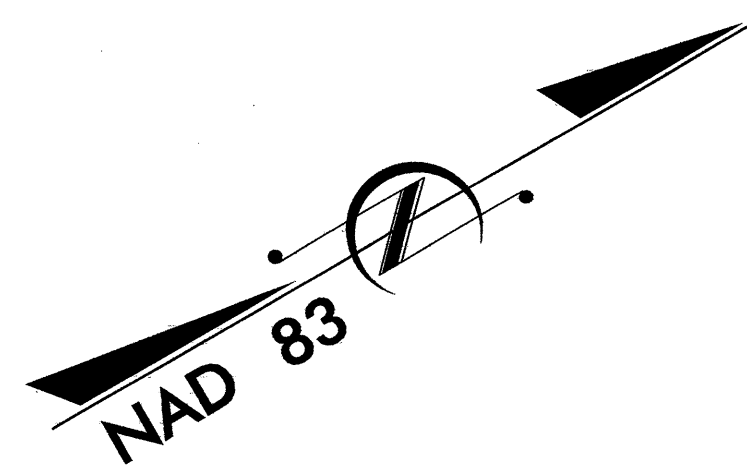
STATE OF NORTH CAROLINA
DIVISION OF HIGHWAYS

PLAN FOR PROPOSED
HIGHWAY EROSION CONTROL

WARREN COUNTY

LOCATION: Bridge No. 67 over Reedy Creek on SR 1507

TYPE OF WORK: Grading, Drainage, Paving and Structure



STATE	STATE PROJECT REFERENCE NO.	SHEET NO.	TOTAL SHEETS
N.C.	B-3707	EC-1	
STATE PROJ. NO.	F.A. PROJ. NO.	DESCRIPTION	

EROSION AND SEDIMENT CONTROL MEASURES

Std. #	Description	Symbol
1630.03	Temporary Silt Ditch	TD
1630.05	Temporary Diversion	TD
1605.01	Temporary Silt Fence	III III III
1606.01	Special Sediment Control Fence	III III III
1622.01	Temporary Berms and Slope Drains	—
1630.01	Riser Basin	⊙
1630.02	Silt Basin Type B	▨
1635.01	Temporary Rock Silt Check Type-A	▨
1635.01	Temporary Rock Silt Check Type-B	▨
	Wattle	—
1634.01	Temporary Rock Sediment Dam Type-A	▨
1634.02	Temporary Rock Sediment Dam Type-B	▨
1635.01	Rock Pipe Inlet Sediment Trap Type-A	⊙
1635.02	Rock Pipe Inlet Sediment Trap Type-B	⊙
1630.04	Stilling Basin	▭
	Rock Inlet Sediment Trap:	
1632.01	Type A	A
1632.02	Type B	B
1632.03	Type C	C
	Skimmer Basin	▭
	Tiered Skimmer Basin	▭
	Infiltration Basin	▭

**THIS PROJECT CONTAINS
EROSION CONTROL PLANS
FOR CLEARING AND
GRUBBING PHASE OF
CONSTRUCTION.**

**THIS PROJECT HAS
BEEN DESIGNED TO
SENSITIVE WATERSHED
STANDARDS.**

**ENVIRONMENTALLY
SENSITIVE AREA(S) EXIST
ON THIS PROJECT**
*Refer To E. C. Special Provisions
for Special Considerations.*

GRAPHIC SCALE

0 ——— 100

PLANS

0 ——— 100

PROFILE (HORIZONTAL)

0 ——— 100

PROFILE (VERTICAL)

ROADSIDE ENVIRONMENTAL UNIT
DIVISION OF HIGHWAYS
STATE OF NORTH CAROLINA

Prepared in the Office of:
ROADSIDE ENVIRONMENTAL UNIT
1 South Wilmington St.
Raleigh, NC 27611
2006 STANDARD SPECIFICATIONS

Roadway Standard Drawings

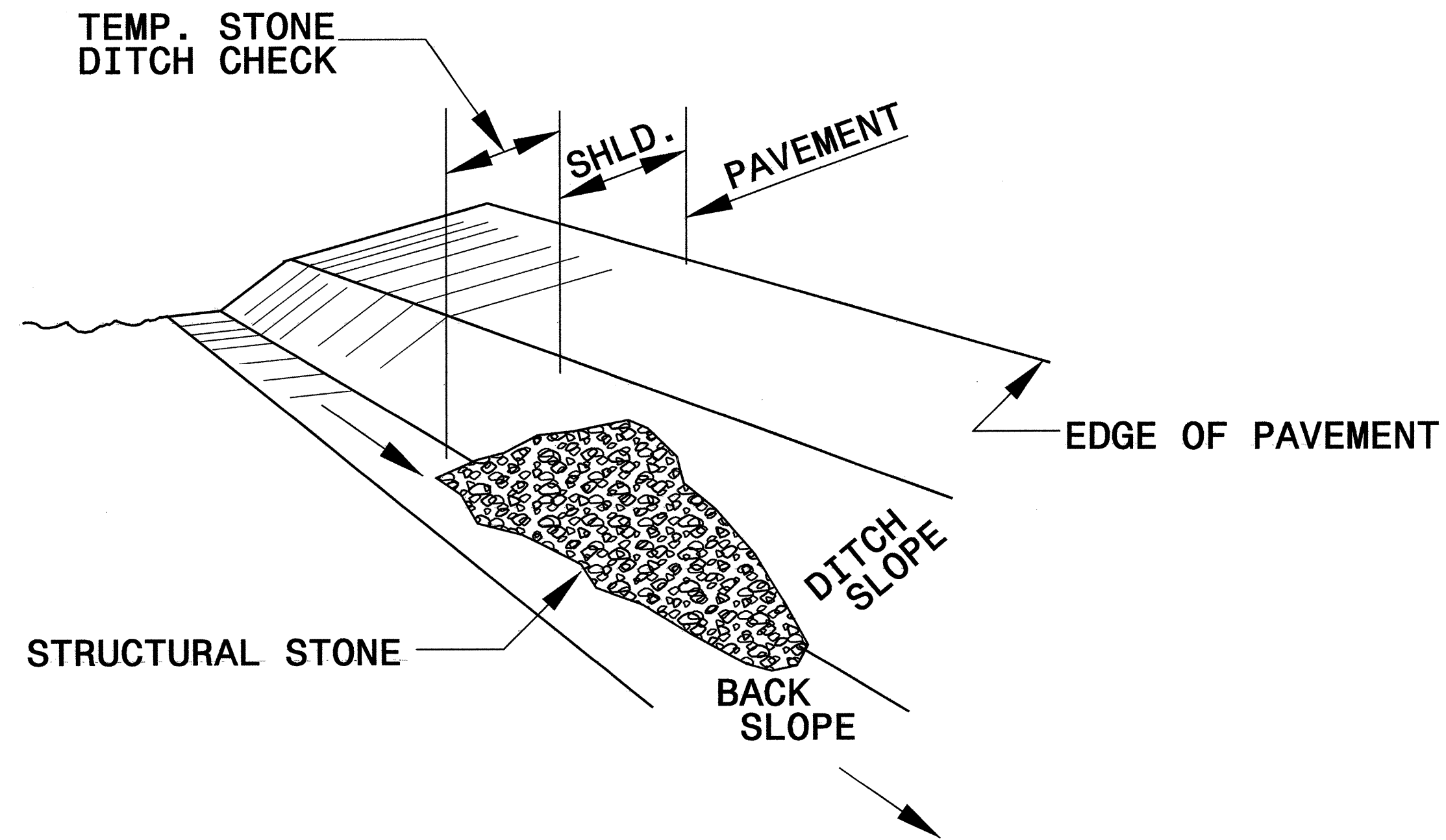
The following roadway english standards as appear in "Roadway Standard Drawings"- Roadway Design Unit - N. C. Department of Transportation - Raleigh, N. C., dated July 18, 2006 and the latest revision thereto are applicable to this project and by reference hereby are considered a part of these plans.

1605.01 Temporary Silt Fence	1632.03 Rock Inlet Sediment Trap Type C
1607.01 Gravel Construction Entrance	1633.01 Temporary Rock Silt Check Type A
	1634.02 Temporary Rock Sediment Dam Type B

I:\M&E\2008\456\project\ec-b-3707\design\detail\ec3707-r.dwg, tsh.dgn

PROJECT REFERENCE NO.	SHEET NO.
B-3707	EC-2
RW SHEET NO.	
ROADWAY DESIGN ENGINEER	HYDRAULICS ENGINEER

TEMPORARY ROCK SILT CHECK TYPE 'B' DETAIL

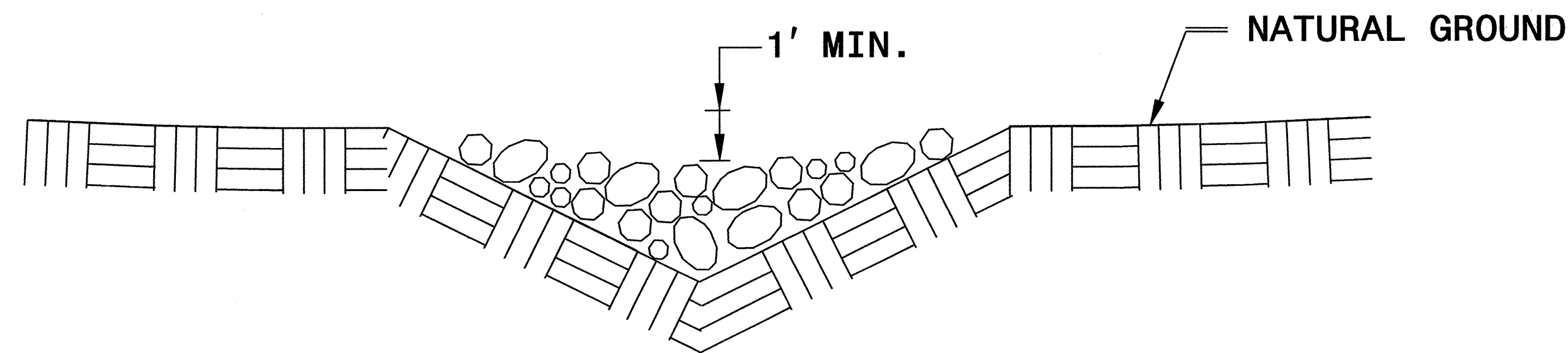


ISOMETRIC VIEW

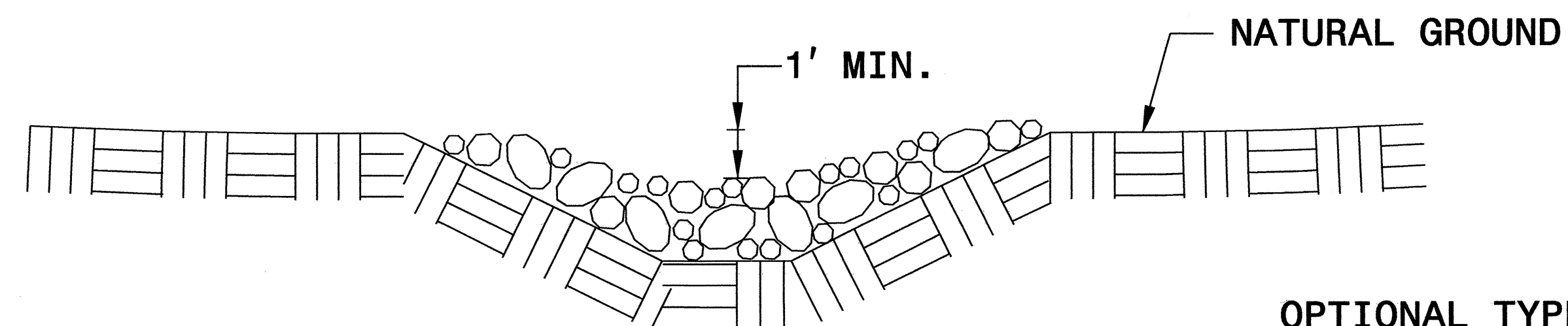
NOTES:

USE CLASS 'B' EROSION CONTROL STONE FOR STRUCTURAL STONE.

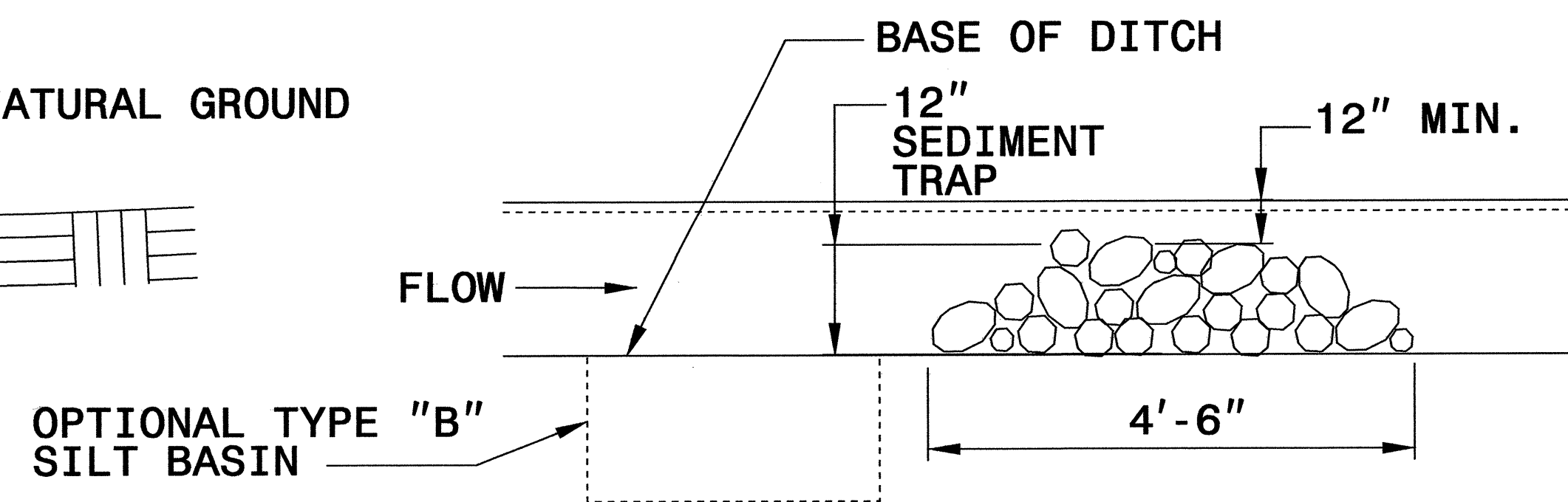
THE ENGINEER MAY DIRECT THE OPTION OF CLASS "A" STONE FOR SITES HAVING LESS THAN ONE (1) ACRE DRAINAGE AREA AND A DITCH GRADE LESS THAN 3%.



CROSS SECTION VEE DITCH



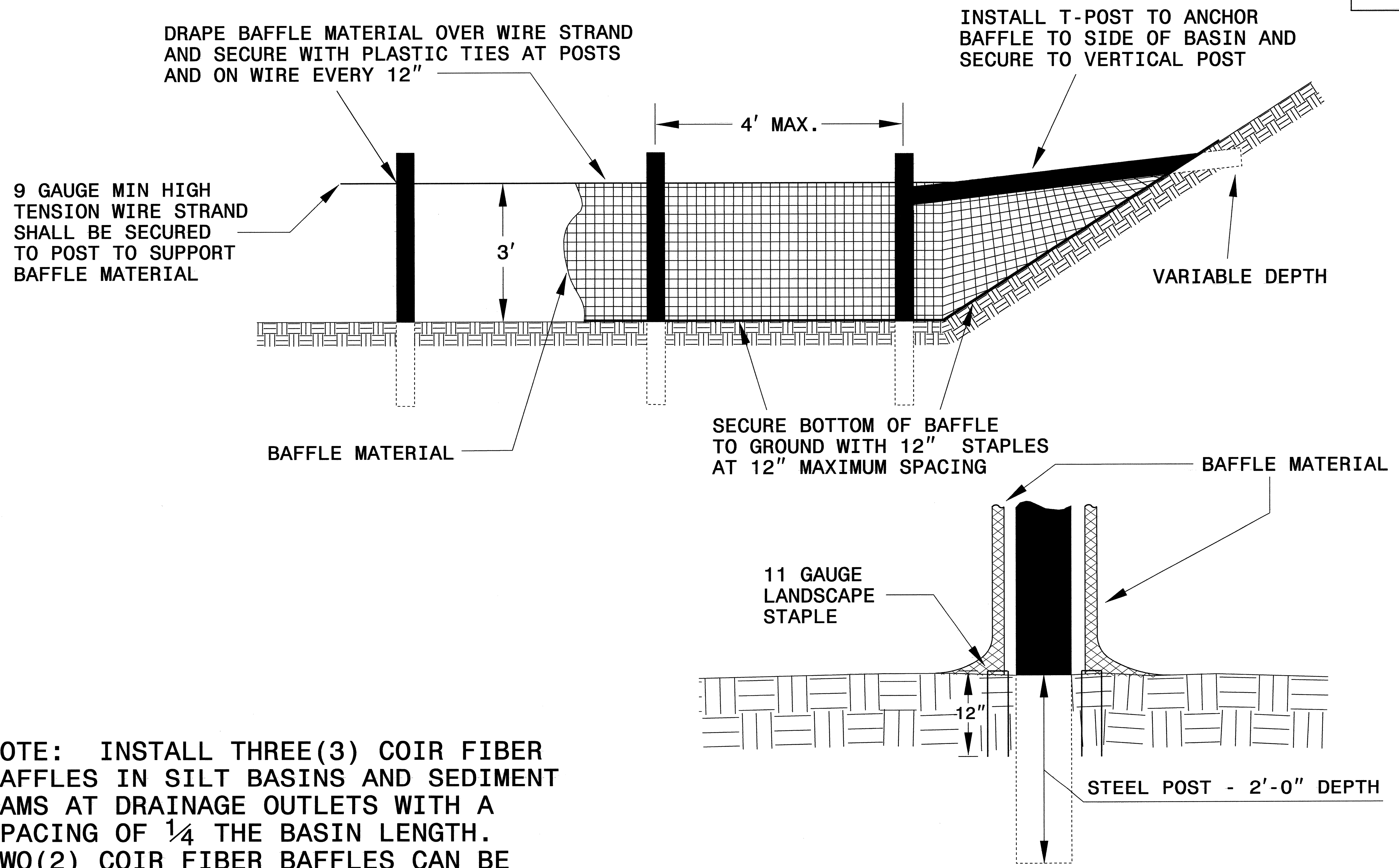
CROSS SECTION TRAPEZOIDAL DITCH



ELEVATION VIEW

PROJECT REFERENCE NO. B-3707	SHEET NO. EC-2A
RW SHEET NO.	
ROADWAY DESIGN ENGINEER	HYDRAULICS ENGINEER

COIR FIBER BAFFLE DETAIL



NOTE: INSTALL THREE(3) COIR FIBER BAFFLES IN SILT BASINS AND SEDIMENT DAMS AT DRAINAGE OUTLETS WITH A SPACING OF $\frac{1}{4}$ THE BASIN LENGTH. TWO(2) COIR FIBER BAFFLES CAN BE INSTALLED IN SILT BASINS AND DAMS LESS THAN 20 FT. IN LENGTH WITH A SPACING OF $\frac{1}{3}$ THE BASIN LENGTH.

BAFFLE MATERIAL SHALL BE SECURED TO THE BOTTOM AND SIDES OF BASIN USING 12" LANDSCAPE STAPLES

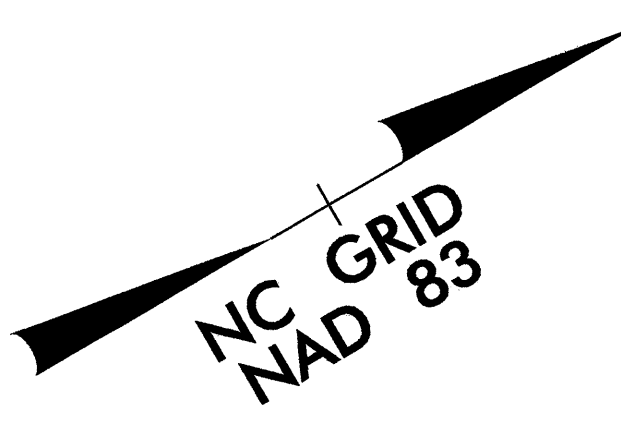
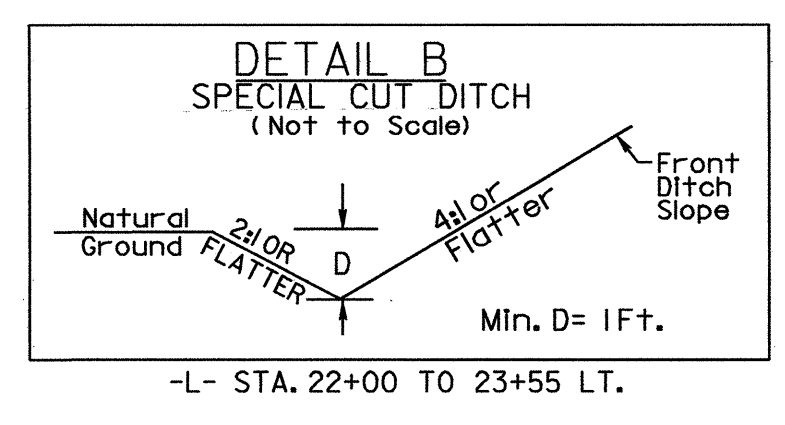
8/17/99

CLEARING AND GRUBBING
EROSION CONTROL FOR
CONSTRUCTION SHEET 4

NOTE:
UTILIZE TEMPORARY ROCK SILT CHECK TYPE - A
AS STILLING BASIN WHERE APPLICABLE.

NOTE:
PLACE TEMPORARY ROCK SEDIMENT DAMS TYPE - B
AND TEMPORARY ROCK SILT CHECKS TYPE - A AT
DRAINAGE OUTLETS.

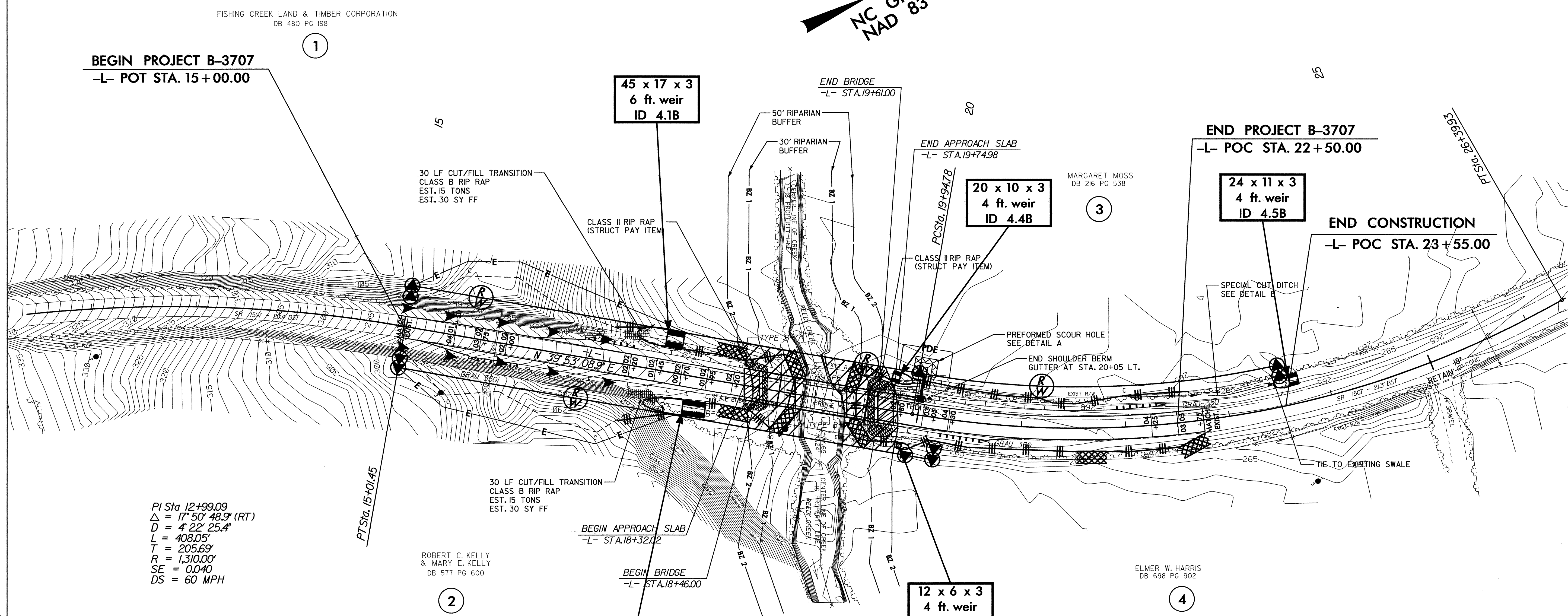
PROJECT REFERENCE NO. B-3707	SHEET NO. EC-4/CONST.4
RW SHEET NO.	
ROADWAY DESIGN ENGINEER	HYDRAULICS ENGINEER



BEGIN PROJECT B-3707
-L- POT STA. 15+00.00

END PROJECT B-3707
-L- POC STA. 22+50.00

END CONSTRUCTION
-L- POC STA. 23+55.00



PI Sta 12+99.09
Δ = 17° 50' 48.9" (RT)
D = 4' 22" 25.4"
L = 408.05'
T = 205.69'
R = 1,310.00'
SE = 0.040
DS = 60 MPH

ROBERT C. KELLY
& MARY E. KELLY
DB 577 PG 600

ELMER W. HARRIS
DB 698 PG 902

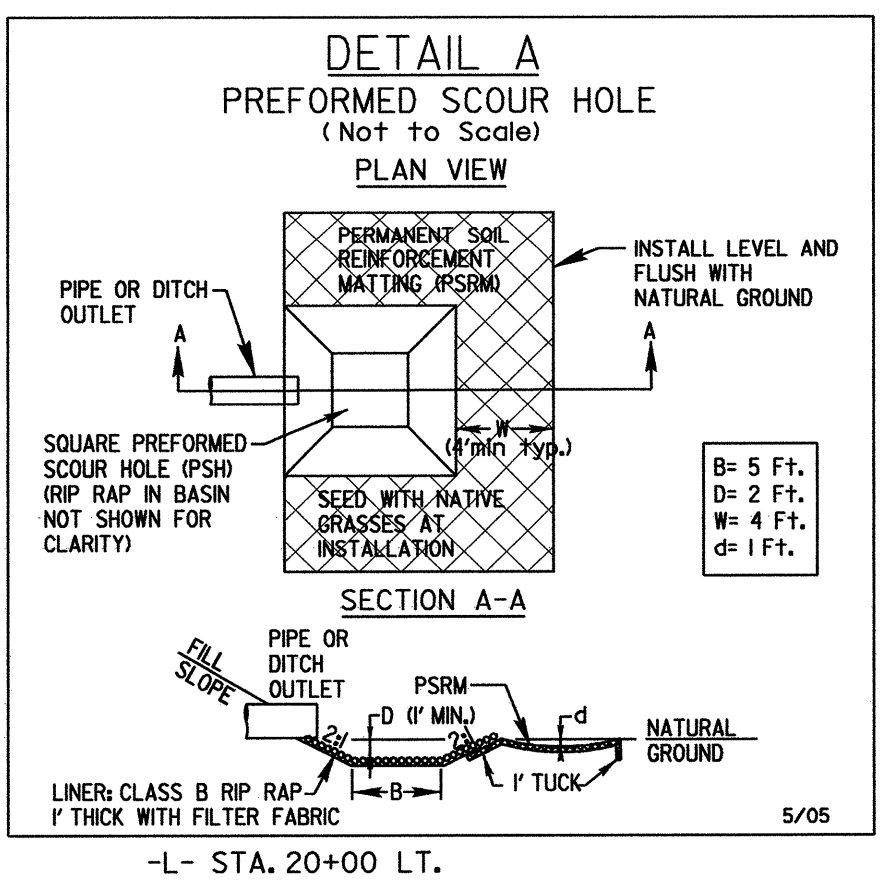
BEGIN APPROACH SLAB
-L- STA. 18+32.02

BEGIN BRIDGE
-L- STA. 18+46.00

12 x 6 x 3
4 ft. weir
ID 4.3B

PI Sta 23+30.94
Δ = 39° 44' 47.8" (LT)
D = 6' 09' 39.0"
L = 645.15'
T = 336.17'
*R = 930.00'
SE = 0.040
DS = 50 MPH
* DESIGN EXCEPTION REQUIRED

60 x 15 x 3
6 ft. weir
ID 4.2B



LEGEND

	PAVED SHOULDER
	APPROACH SLAB

ENVIRONMENTALLY SENSITIVE AREA
SEE PROJECT SPECIAL PROVISIONS

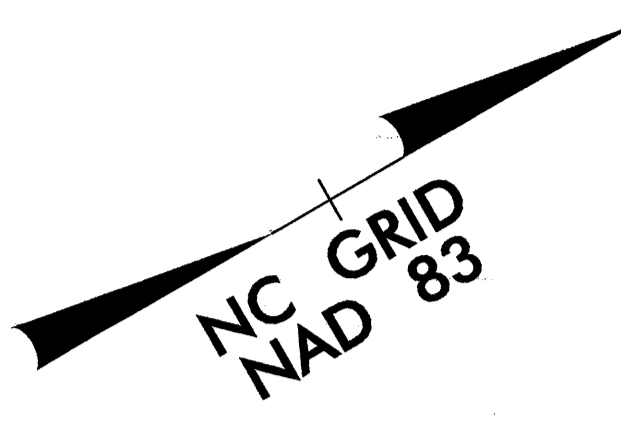
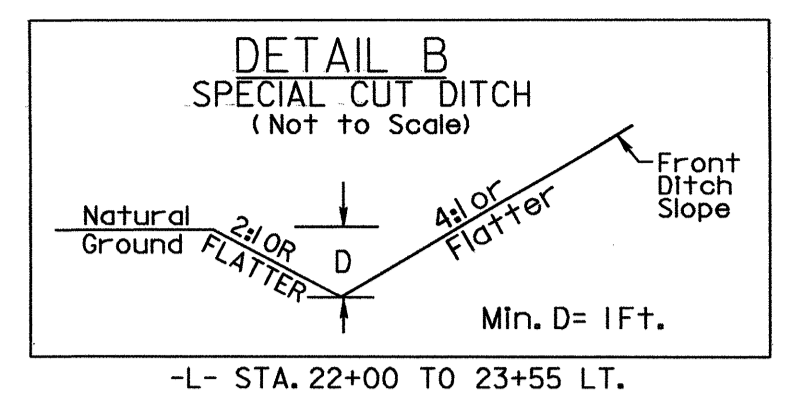
FOR STRUCTURES SEE SHEETS S-1 THRU S-5
FOR -L- PROFILE, SEE SHEET NO. 5

17-MAR-2008 11:57 AM C:\p\p\3707\environmental\design\b3707_rdy_psh_04.dgn

8/17/99

NOTE: UTILIZE TEMPORARY ROCK SILT CHECK TYPE - A AS STILLING BASIN WHERE APPLICABLE.

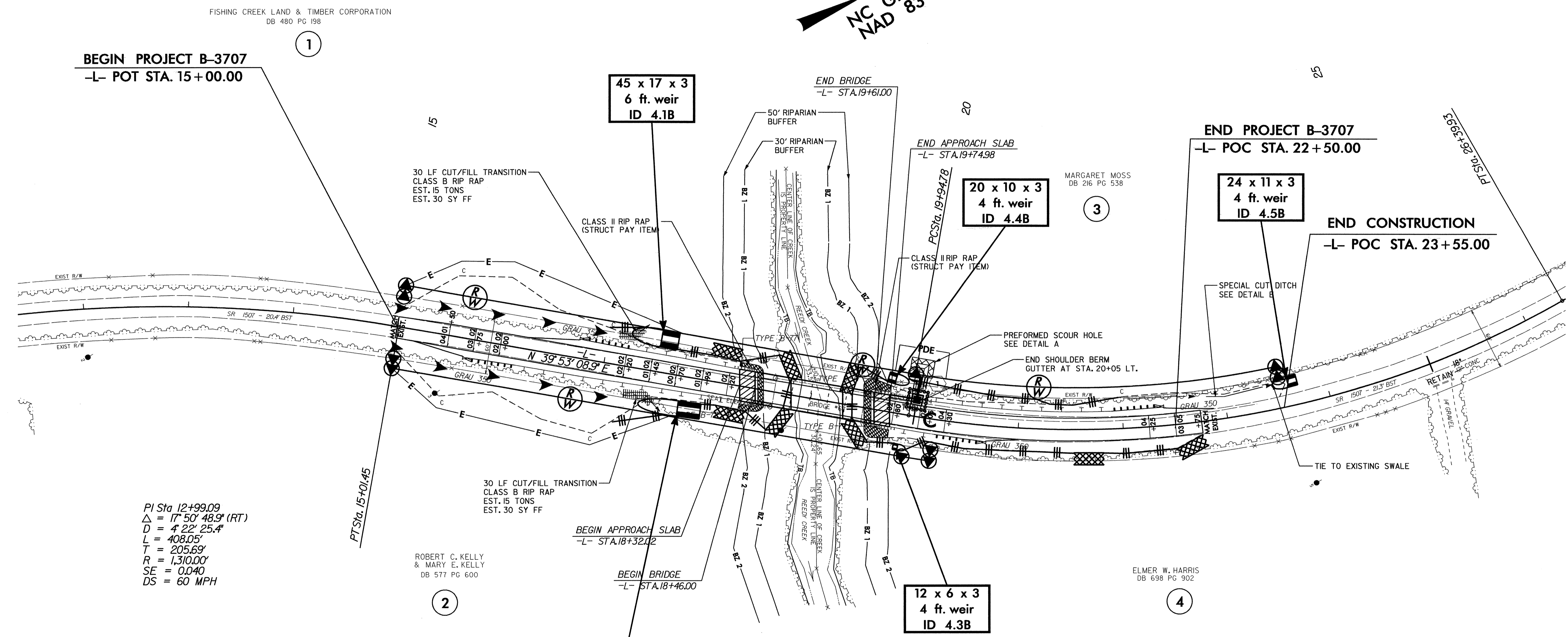
PROJECT REFERENCE NO.	SHEET NO.
B-3707	EC-5/CONST.4
RW SHEET NO.	
ROADWAY DESIGN ENGINEER	HYDRAULICS ENGINEER



BEGIN PROJECT B-3707
-L- POT STA. 15+00.00

END PROJECT B-3707
-L- POC STA. 22+50.00

END CONSTRUCTION
-L- POC STA. 23+55.00

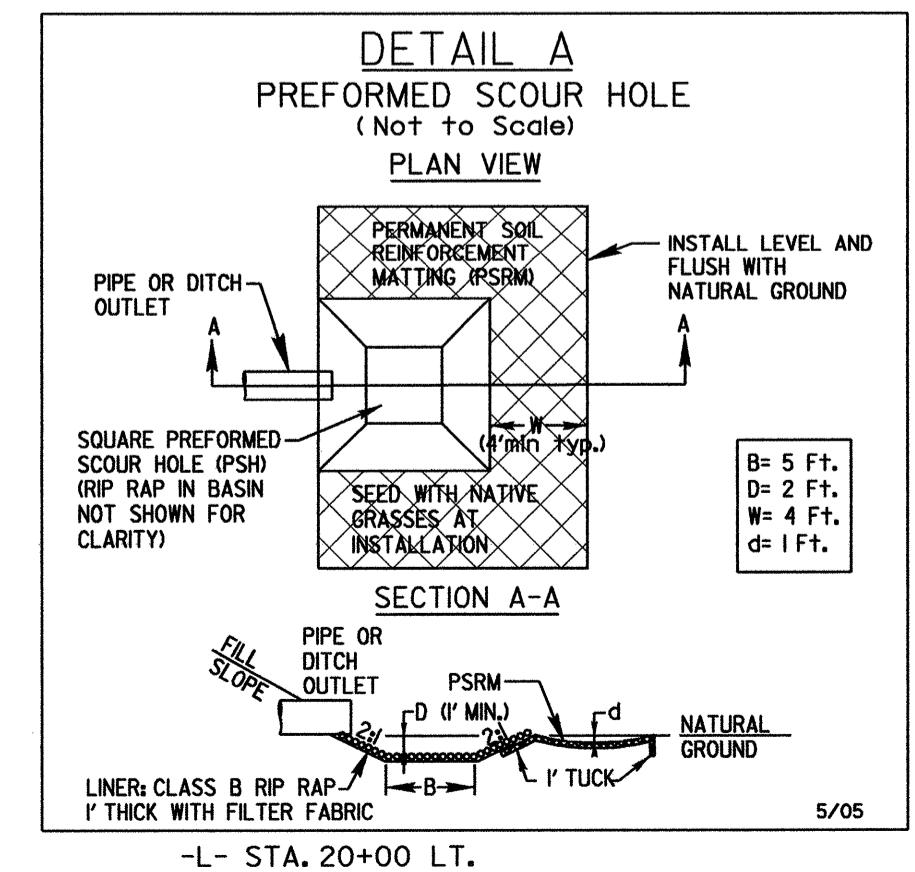


PI Sta 12+99.09
 $\Delta = 17^{\circ} 50' 48.9''$ (RT)
 $D = 4' 22' 25.4''$
 $L = 408.05'$
 $T = 205.69'$
 $R = 1,310.00'$
 $SE = 0.040$
 $DS = 60$ MPH

ROBERT C. KELLY
 & MARY E. KELLY
 DB 577 PG 600

ELMER W. HARRIS
 DB 698 PG 902

PI Sta 23+30.94
 $\Delta = 39^{\circ} 44' 47.8''$ (LT)
 $D = 6' 09' 39.0''$
 $L = 645.15'$
 $T = 336.17'$
 $*R = 930.00'$
 $SE = 0.040$
 $DS = 50$ MPH
 * DESIGN EXCEPTION REQUIRED



LEGEND

	PAVED SHOULDER
	APPROACH SLAB

FOR STRUCTURES SEE SHEETS S-1 THRU S-4
 FOR -L- PROFILE, SEE SHEET NO. 5

I:\MAR-2008 11:57 AM\p\proj\env\environmental\design\b3707_rdy_psh_04.dgn
 REVISION: 231812