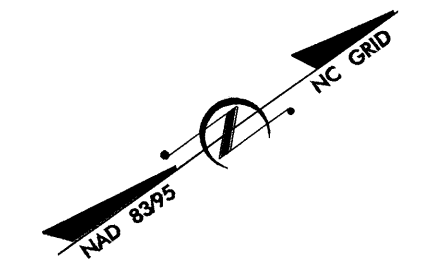
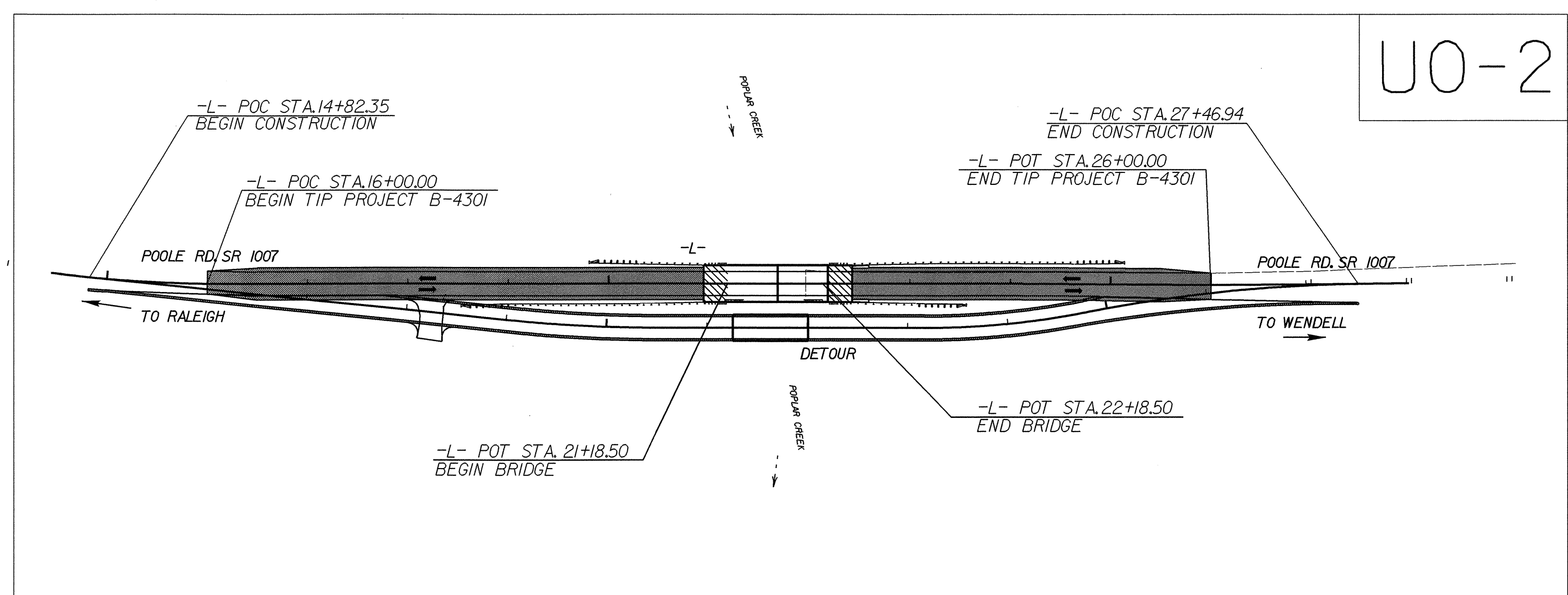
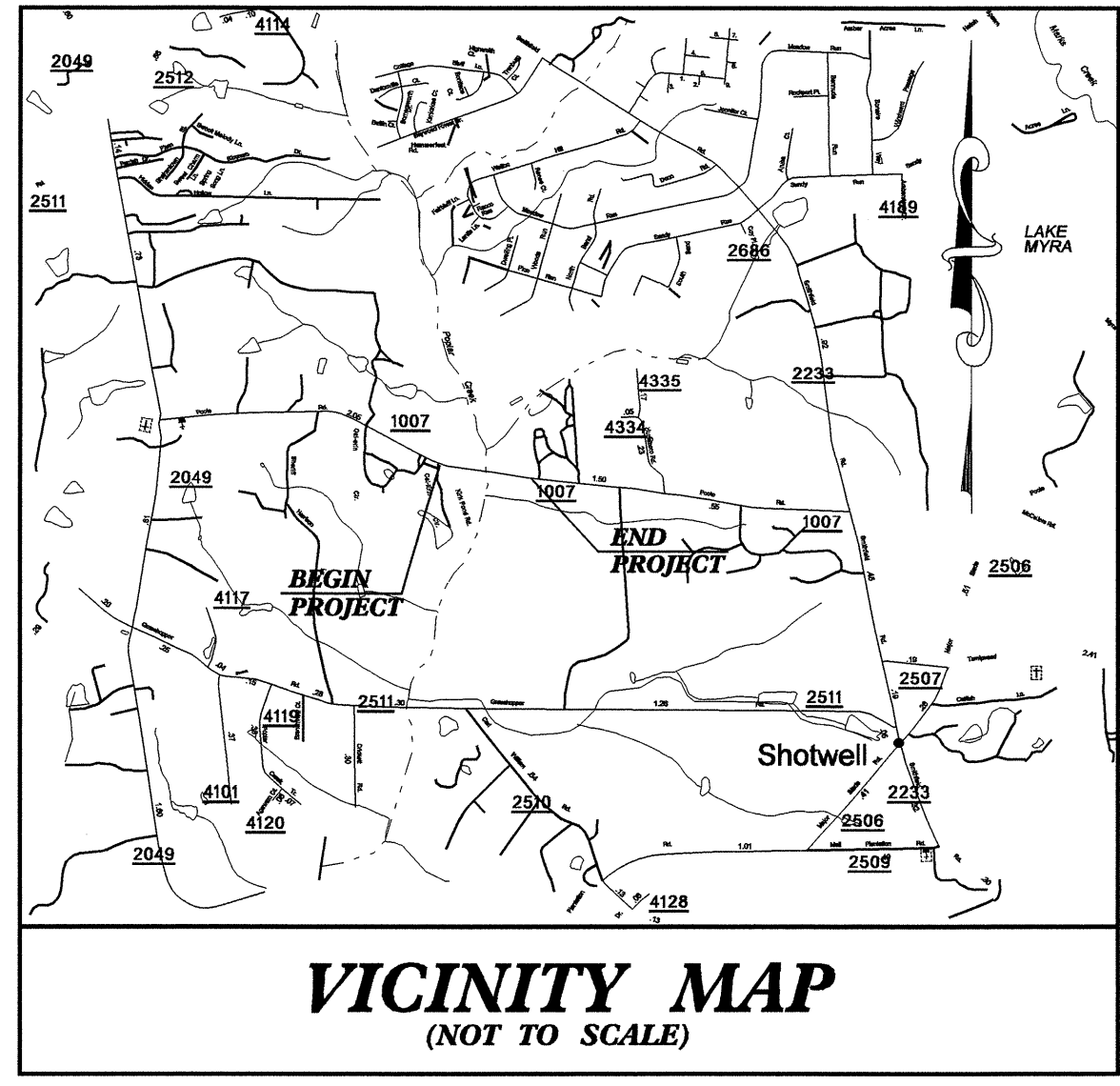


T.I.P. NO.	SHEET NO.
B-4301	UO-1

STATE OF NORTH CAROLINA
DIVISION OF HIGHWAYS

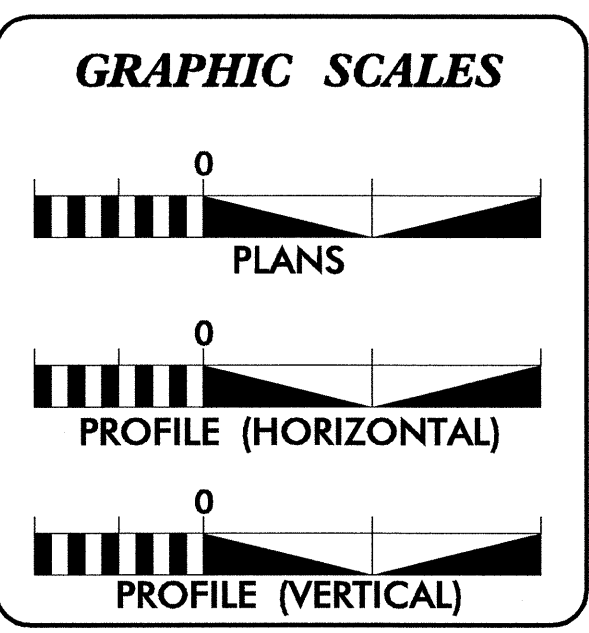
UTILITY BY OTHERS PLANS WAKE COUNTY

LOCATION: BRIDGE 229 OVER POPLAR CREEK ON SR 1007
TYPE OF WORK: UTILITIES BY OTHERS



TIP PROJECT: B-4301

CONTRACT: C201830




INDEX OF SHEETS

SHEET NO.	DESCRIPTION
UO-1	TITLE SHEET
UO-2	UTILITY BY OTHERS PLAN SHEET

UTILITY OWNERS ON PROJECT

- PROGRESS ENERGY - POWER (DIST.)
- PROGRESS ENERGY - POWER (TRANS.)
- AT&T - TELEPHONE
- TIME WARNER - CATV



PREPARED IN THE OFFICE OF:
**DIVISION OF HIGHWAYS
DESIGN SERVICES
UTILITY SECTION**

1591 MAIL SERVICES CENTER
RALEIGH NC 27699-1591
PHONE (919) 250-4128
FAX (919) 250-4119

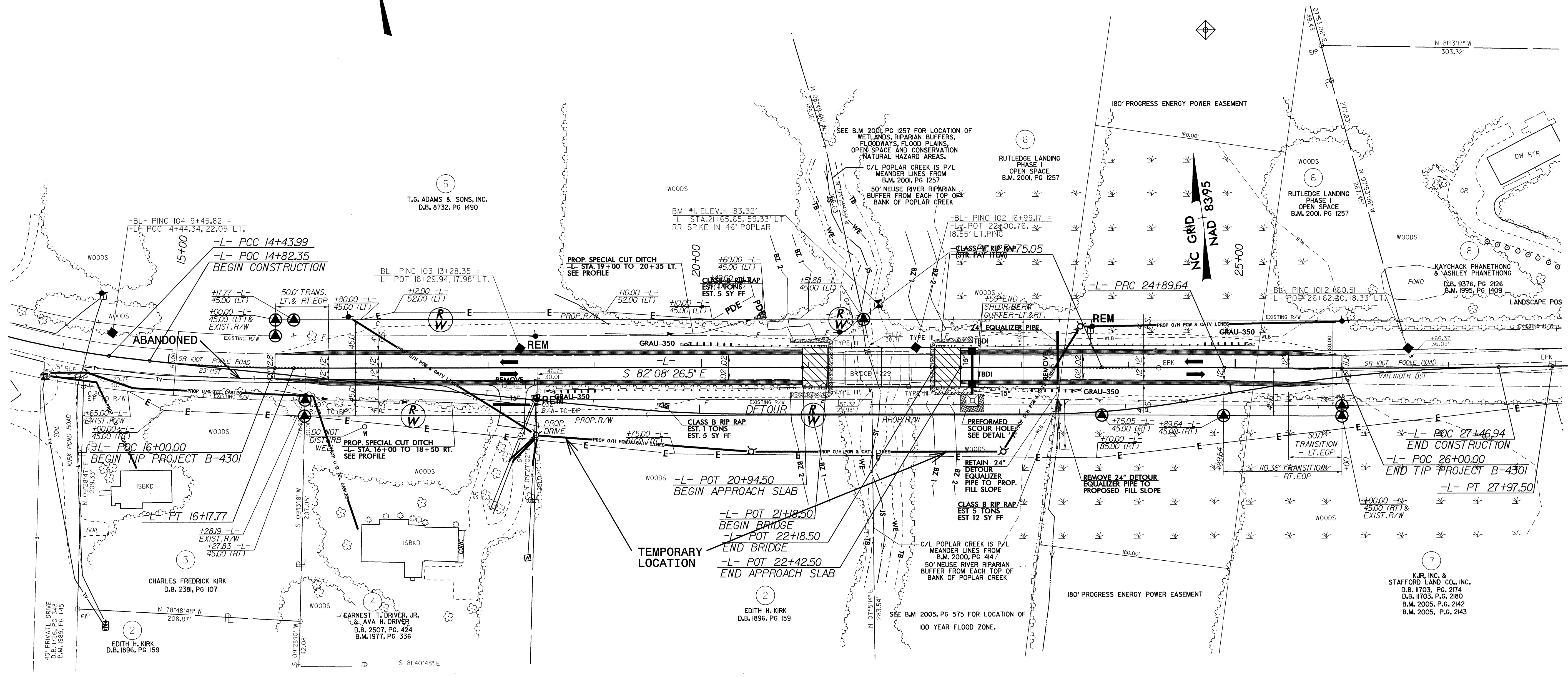
Roger Worthington, P.E. UTILITIES SECTION ENGINEER
R. B. WILKINS, P.E. UTILITIES SQUAD LEADER PROJECT ENGINEER
MICHAEL R. BRIGHT UTILITIES PROJECT DESIGNER

04-JAN-2008 14:09 F:\utilities\rdy\ut\proj\b4301\ut_title_uol.psh.dgn \$\$\$USERNAME\$\$\$

UTILITIES BY OTHERS

NOTE:
ALL PROPOSED UTILITY WORK
SHOWN ON THIS SHEET WILL
BE DONE BY OTHERS

5/14/99



18-MAR-2008 14:00
r:\utility\chuck\proj\B4301\ut_4_uo2_pah.dgn