

TIP PROJECT: B-4280

STATE OF NORTH CAROLINA
 DIVISION OF HIGHWAYS
 PLAN FOR PROPOSED
 HIGHWAY EROSION CONTROL
STOKES COUNTY

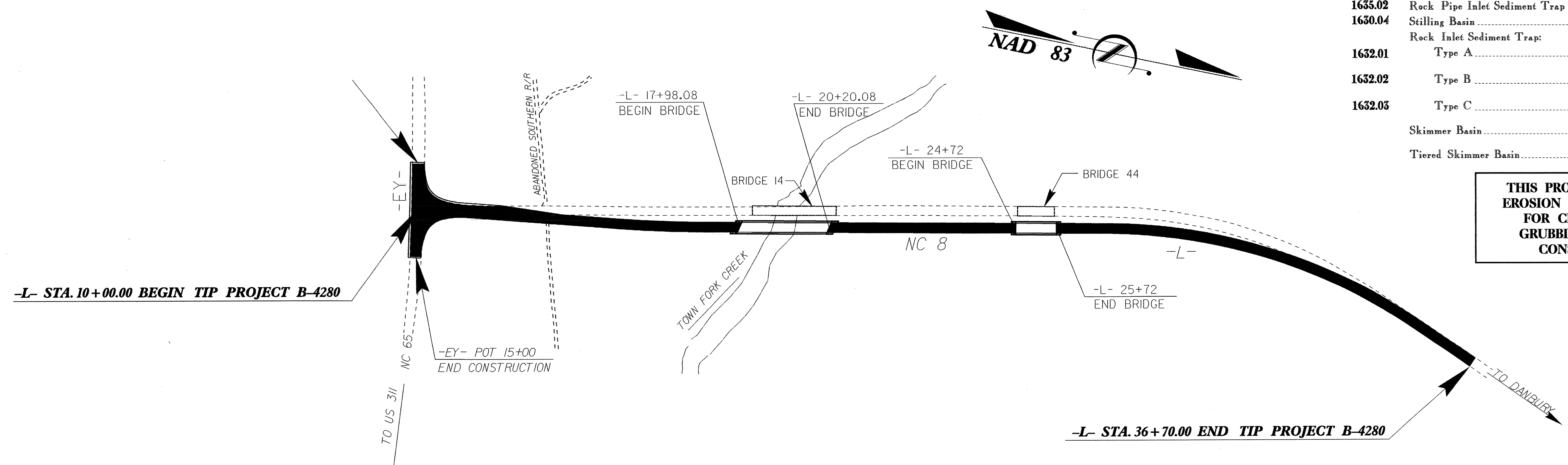
LOCATION: BRIDGE 14 AND BRIDGE 44 ON NC 8 OVER TOWN FORK CREEK AND TOWN FORK CREEK OVERFLOW
TYPE OF WORK: GRADING, DRAINAGE, PAVING AND STRUCTURES

STATE	STATE PROJECT REFERENCE NO.	SHEET NO.	TOTAL SHEETS
N.C.	B-4280	EC-1	
STATE PROJ. NO.	F.A. PROJ. NO.	DESCRIPTION	

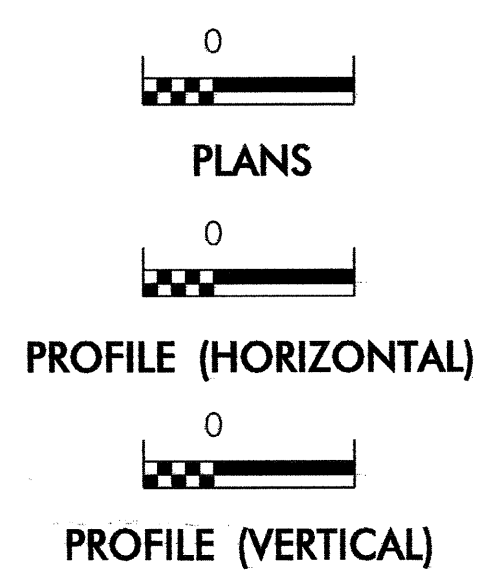
EROSION AND SEDIMENT CONTROL MEASURES

Std. #	Description	Symbol
	Streambank Reforestation	
1630.03	Temporary Silt Ditch	
1630.05	Temporary Diversion	
1605.01	Temporary Silt Fence	
1606.01	Special Sediment Control Fence	
1622.01	Temporary Berms and Slope Drains	
1630.01	Riser Basin	
1630.02	Silt Basin Type B	
1633.01	Temporary Rock Silt Check Type-A	
	Temporary Rock Silt Check Type-B	
1634.01	Temporary Rock Sediment Dam Type-A	
1634.02	Temporary Rock Sediment Dam Type-B	
1635.01	Rock Pipe Inlet Sediment Trap Type-A	
1635.02	Rock Pipe Inlet Sediment Trap Type-B	
1630.04	Stilling Basin	
	Rock Inlet Sediment Trap:	
1632.01	Type A	
1632.02	Type B	
1632.03	Type C	
	Skimmer Basin	
	Tiered Skimmer Basin	

THIS PROJECT CONTAINS EROSION CONTROL PLANS FOR CLEARING AND GRUBBING PHASE OF CONSTRUCTION.



GRAPHIC SCALE



ROADSIDE ENVIRONMENTAL UNIT
 DIVISION OF HIGHWAYS
 STATE OF NORTH CAROLINA

Prepared In the Office of:
ROADSIDE ENVIRONMENTAL UNIT
 1 South Wilmington St.
 Raleigh, NC 27611
2006 STANDARD SPECIFICATIONS

Roadway Standard Drawings

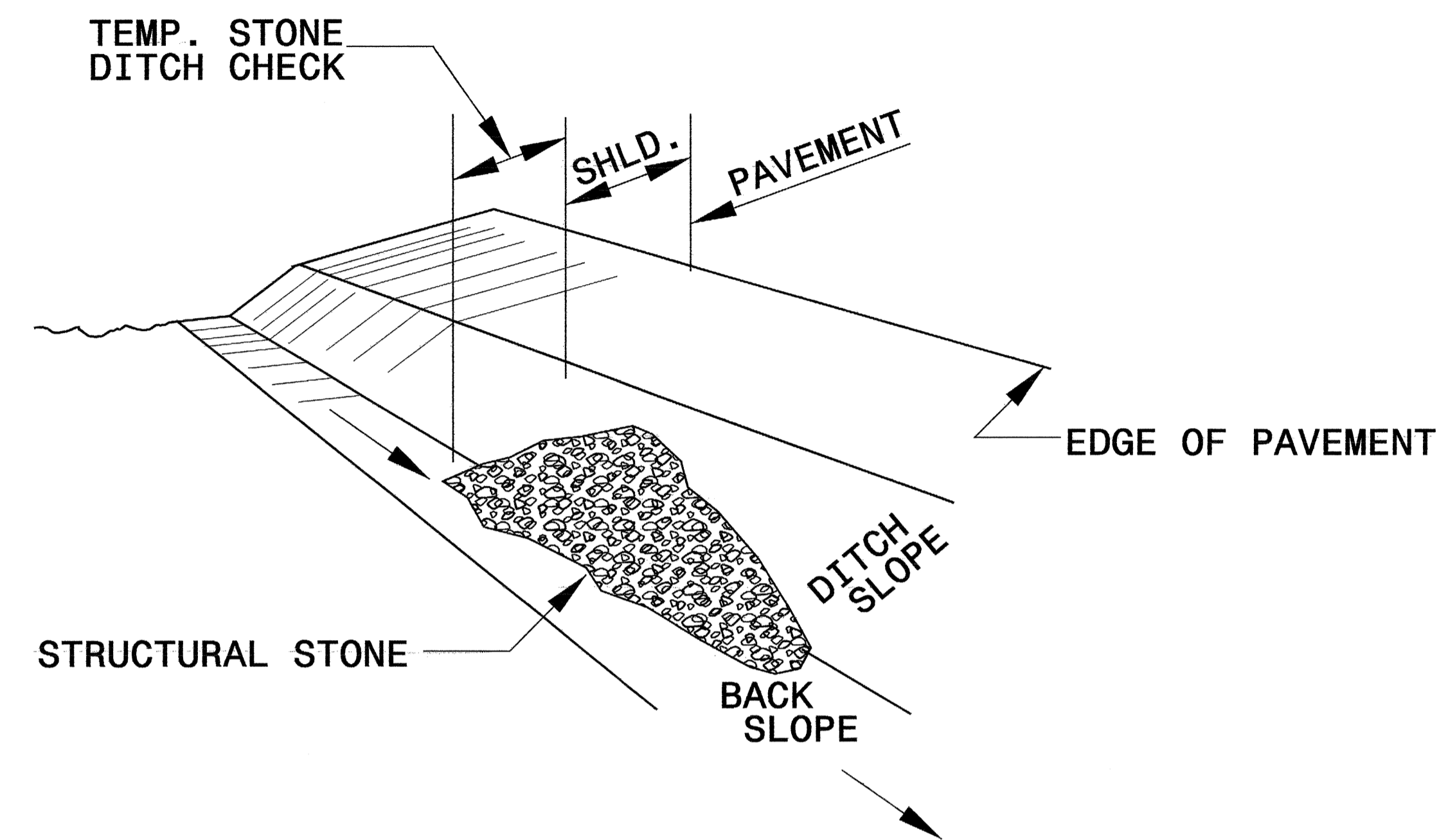
The following roadway english standards as appear in "Roadway Standard Drawings"- Roadway Design Unit - N. C. Department of Transportation - Raleigh, N. C., dated July 18, 2006 and the latest revision thereto are applicable to this project and by reference hereby are considered a part of these plans.

1605.01 Temporary Silt Fence	1630.05 Temporary Diversion
1606.01 Special Sediment Control Fence	1630.06 Special Stilling Basin
1607.01 Gravel Construction Entrance	1632.03 Rock Inlet Sediment Trap Type C
1622.01 Temporary Berms and Slope Drains	1633.01 Temporary Rock Silt Check Type A
1630.02 Silt Basin Type B	1634.02 Temporary Rock Sediment Dam Type B
1630.03 Temporary Silt Ditch	1635.01 Rock Pipe Inlet Sediment Trap Type A

s:\projects\4280\design\4280.ec.tsh.dgn
 m:\gis\sh...
 REV 2/15/02

PROJECT REFERENCE NO. B-4280	SHEET NO. EC-2
RW SHEET NO.	
ROADWAY DESIGN ENGINEER	HYDRAULICS ENGINEER

TEMPORARY ROCK SILT CHECK TYPE 'B' DETAIL

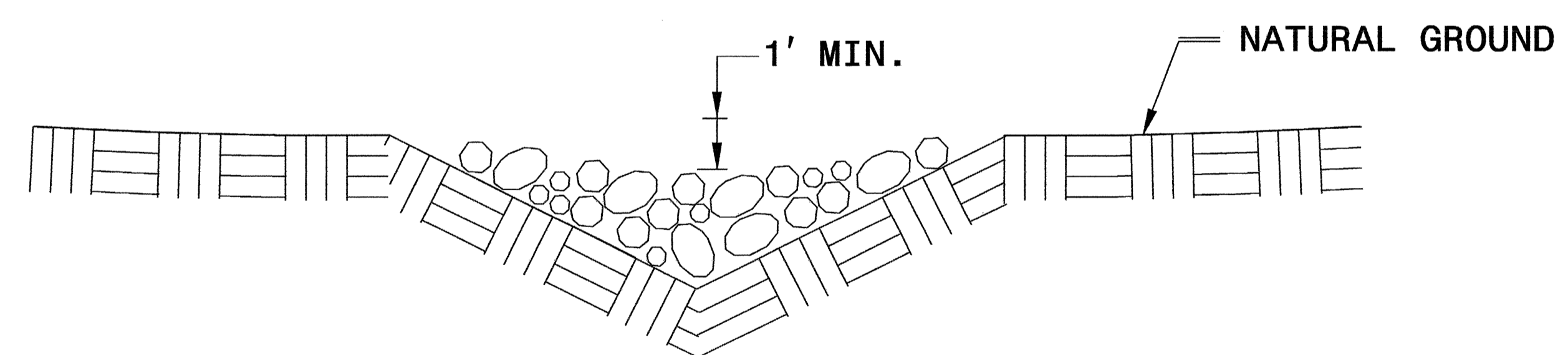


ISOMETRIC VIEW

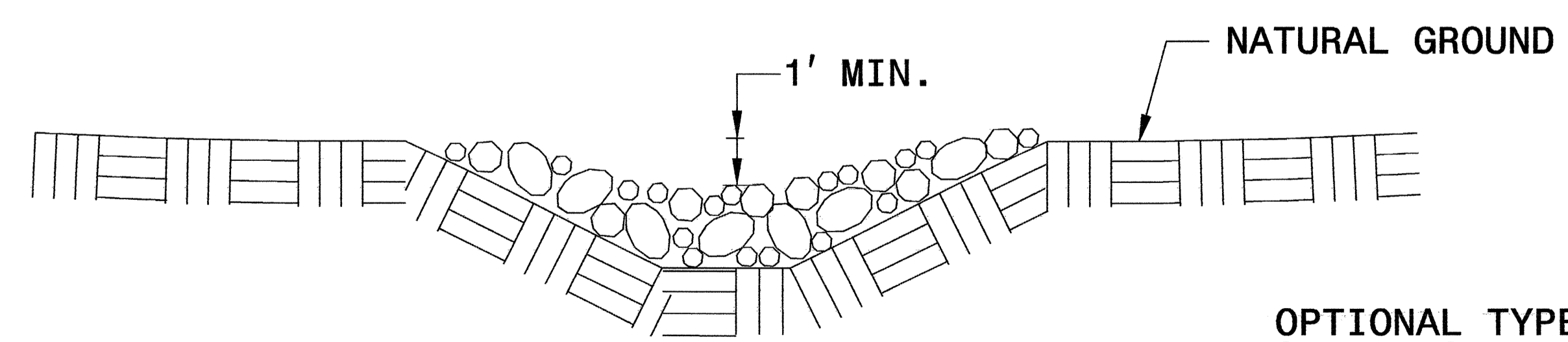
NOTES:

USE CLASS 'B' EROSION CONTROL STONE FOR STRUCTURAL STONE.

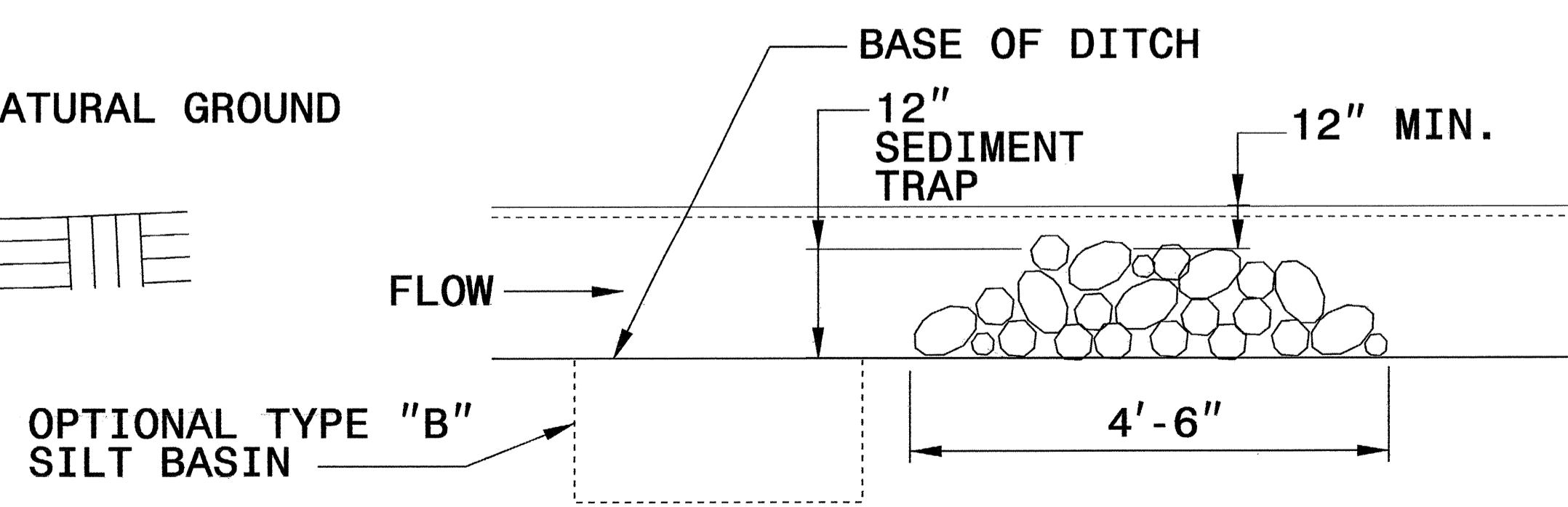
THE ENGINEER MAY DIRECT THE OPTION OF CLASS "A" STONE FOR SITES HAVING LESS THAN ONE (1) ACRE DRAINAGE AREA AND A DITCH GRADE LESS THAN 3%.



CROSS SECTION VEE DITCH



CROSS SECTION TRAPEZOIDAL DITCH

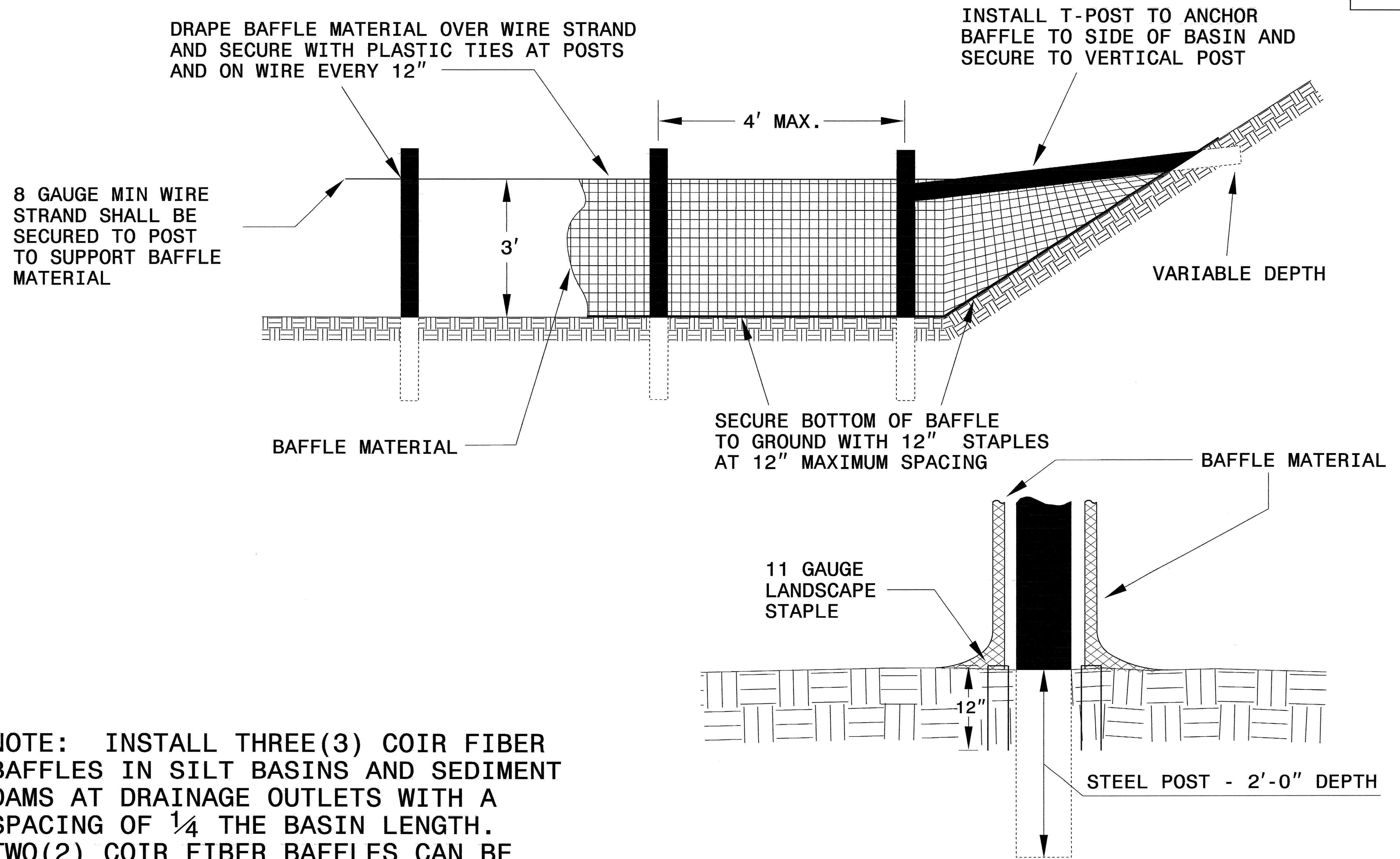


ELEVATION VIEW

OPTIONAL TYPE "B" SILT BASIN

PROJECT REFERENCE NO. B-4280	SHEET NO. EC-2A
RW SHEET NO.	
ROADWAY DESIGN ENGINEER	HYDRAULICS ENGINEER

COIR FIBER BAFFLE DETAIL

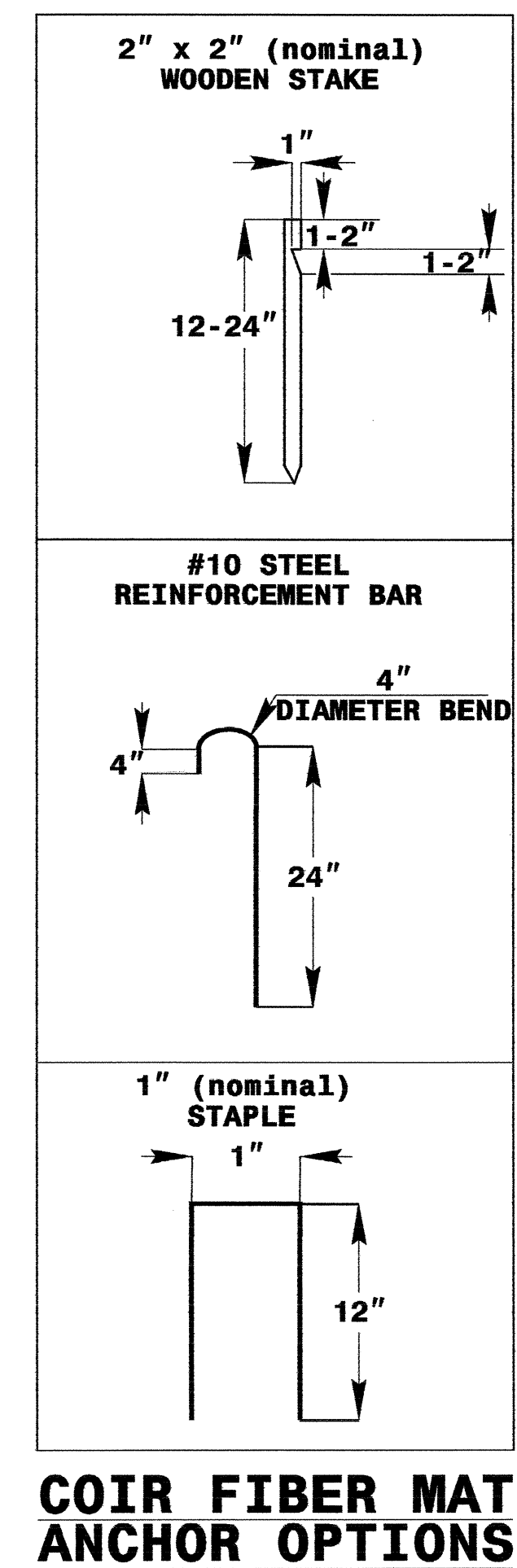
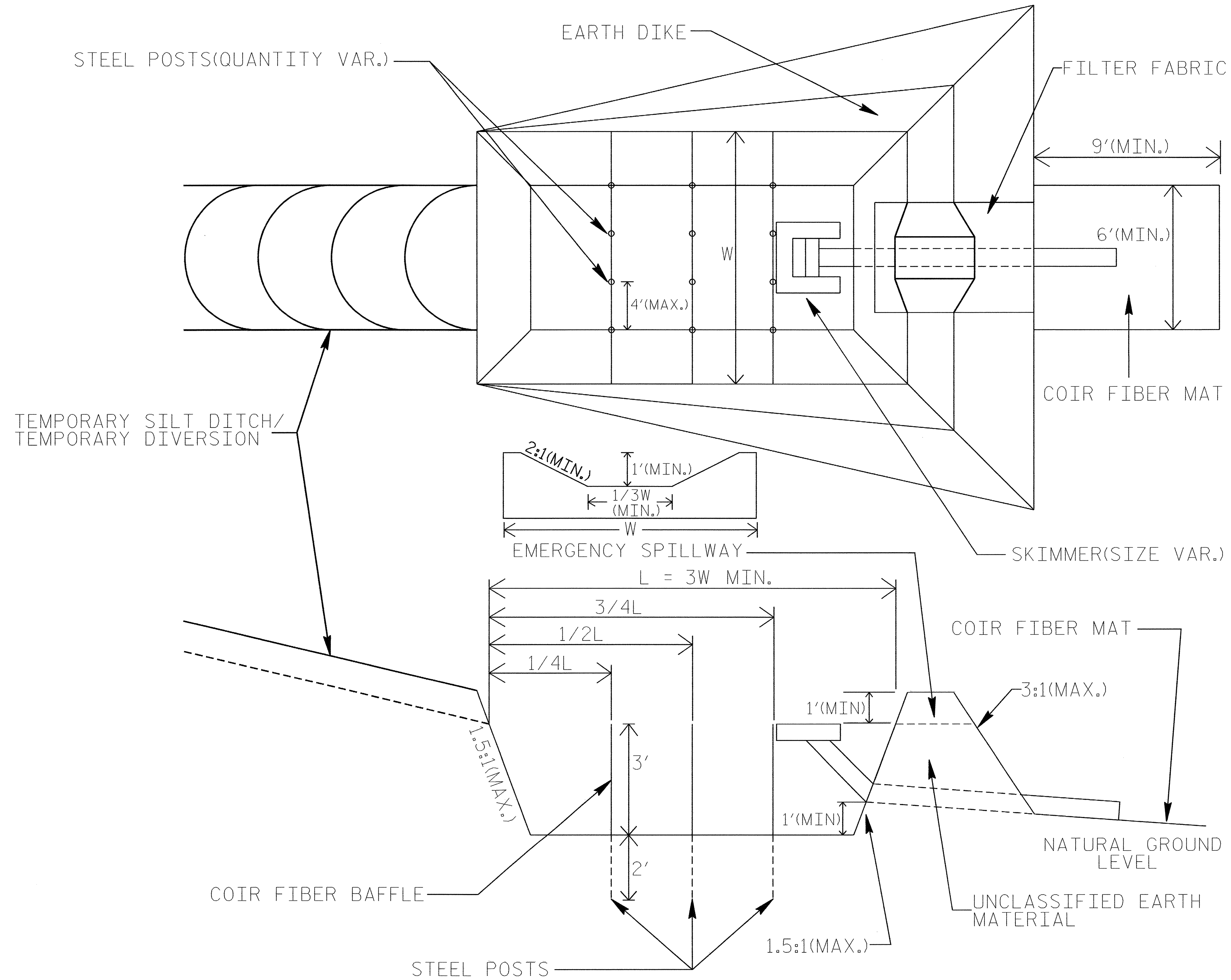


NOTE: INSTALL THREE(3) COIR FIBER BAFFLES IN SILT BASINS AND SEDIMENT DAMS AT DRAINAGE OUTLETS WITH A SPACING OF $\frac{1}{4}$ THE BASIN LENGTH. TWO(2) COIR FIBER BAFFLES CAN BE INSTALLED IN SILT BASINS AND DAMS LESS THAN 20 FT. IN LENGTH WITH A SPACING OF $\frac{1}{3}$ THE BASIN LENGTH.

BAFFLE MATERIAL SHALL BE SECURED TO THE BOTTOM AND SIDES OF BASIN USING 12" LANDSCAPE STAPLES

SKIMMER BASIN WITH BAFFLES DETAIL

PROJECT REFERENCE NO. B-4280	SHEET NO. EC-2B
RW SHEET NO.	
ROADWAY DESIGN ENGINEER	HYDRAULICS ENGINEER

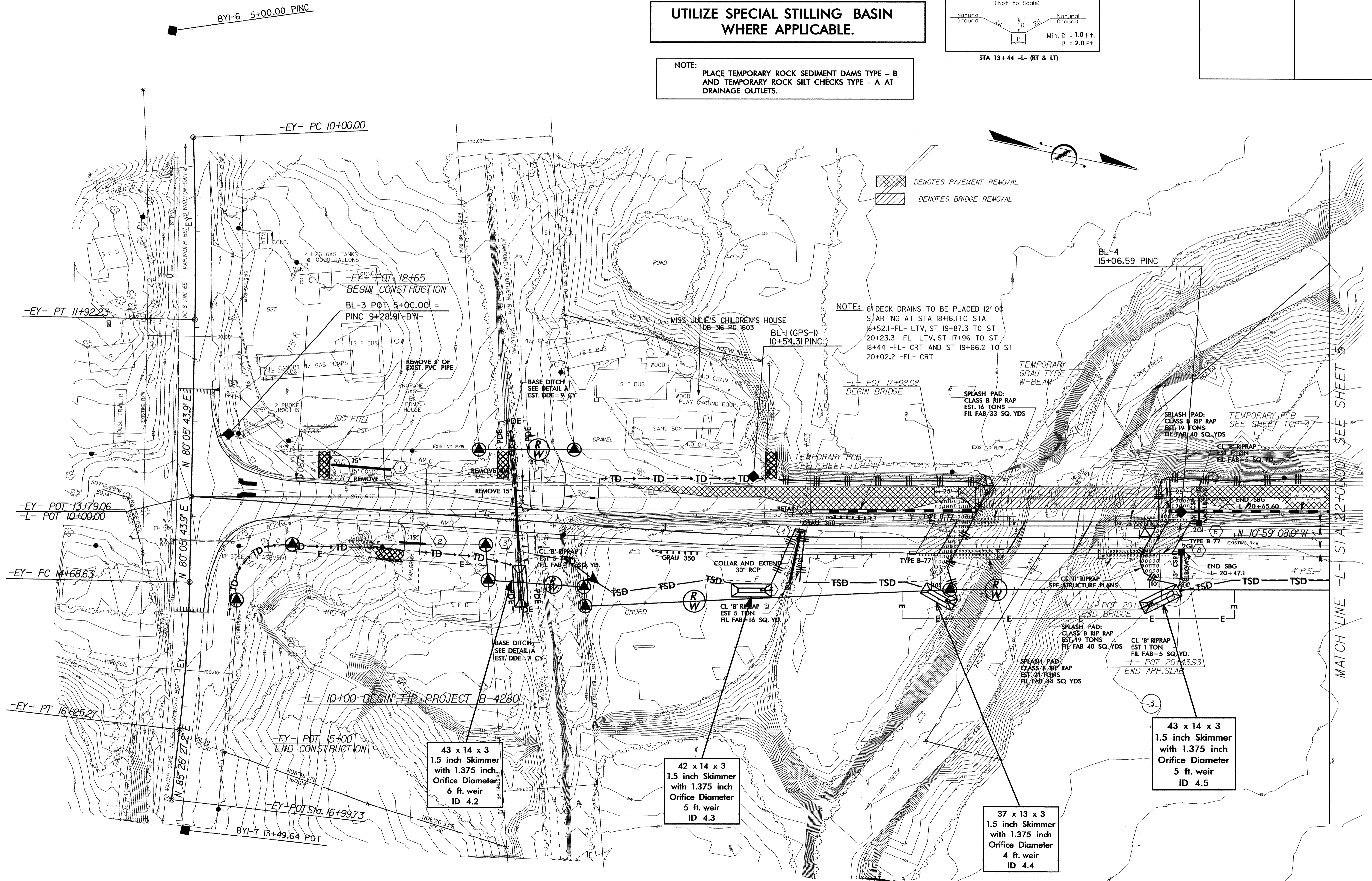
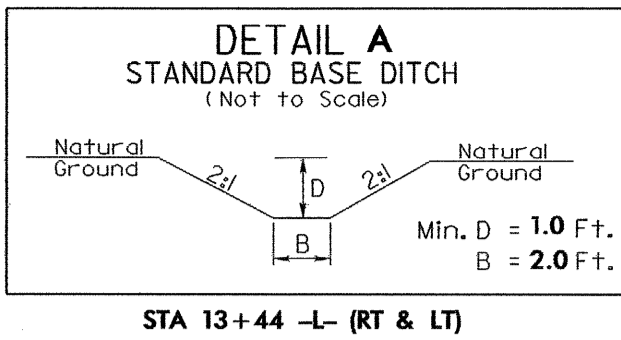


PROJECT REFERENCE NO. B-4280	SHEET NO. EC-4/CONST.4
RW SHEET NO.	
ROADWAY DESIGN ENGINEER	HYDRAULICS ENGINEER

CLEARING AND GRUBBING
EROSION CONTROL FOR
CONSTRUCTION SHEET 4

**UTILIZE SPECIAL STILLING BASIN
WHERE APPLICABLE.**

NOTE:
PLACE TEMPORARY ROCK SEDIMENT DAMS TYPE - B
AND TEMPORARY ROCK SILT CHECKS TYPE - A AT
DRAINAGE OUTLETS.



DENOTES PAVEMENT REMOVAL
DENOTES BRIDGE REMOVAL

NOTE: 6" DECK DRAINS TO BE PLACED 12' OC
STARTING AT STA 18+66.2 TO STA
18+52.1 -FL- LTV, ST 19+87.3 TO ST
20+23.3 -FL- LTV, ST 17+96 TO ST
18+44 -FL- CRT AND ST 19+66.2 TO ST
20+02.2 -FL- CRT

43 x 14 x 3
1.5 inch Skimmer
with 1.375 inch
Orifice Diameter
6 ft. weir
ID 4.2

42 x 14 x 3
1.5 inch Skimmer
with 1.375 inch
Orifice Diameter
5 ft. weir
ID 4.3

37 x 13 x 3
1.5 inch Skimmer
with 1.375 inch
Orifice Diameter
4 ft. weir
ID 4.4

43 x 14 x 3
1.5 inch Skimmer
with 1.375 inch
Orifice Diameter
5 ft. weir
ID 4.5

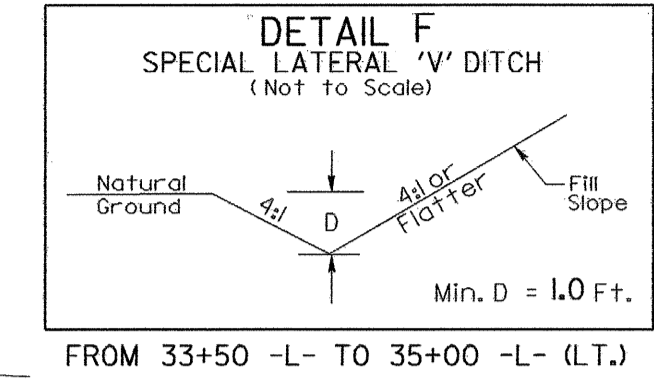
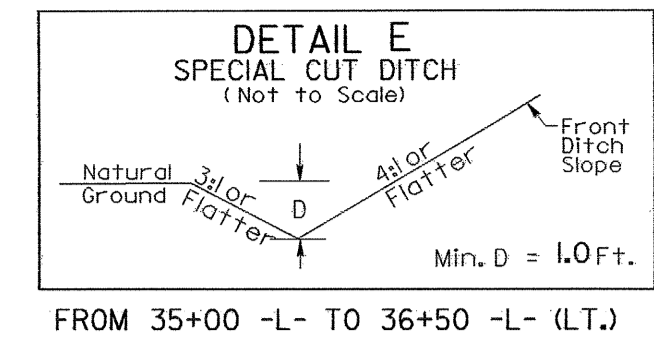
MATCH LINE -L- STA. 22+00.00 SEE SHEET 5

PROJECT REFERENCE NO. B-4280	SHEET NO. EC-5/CONST.5
RW SHEET NO.	
ROADWAY DESIGN ENGINEER	HYDRAULICS ENGINEER

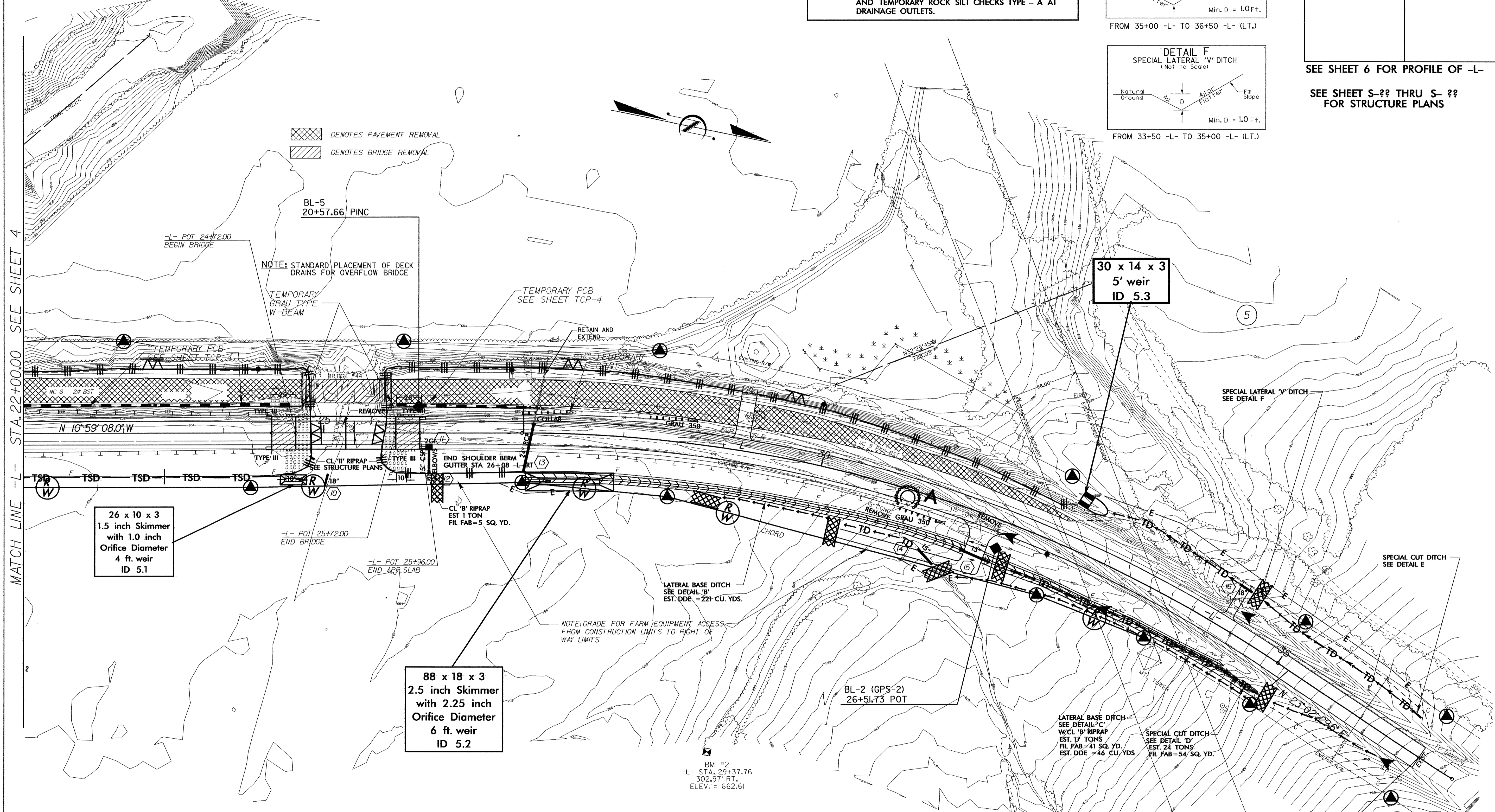
CLEARING AND GRUBBING
EROSION CONTROL FOR
CONSTRUCTION SHEET 5

UTILIZE SPECIAL STILLING BASIN
WHERE APPLICABLE.

NOTE:
PLACE TEMPORARY ROCK SEDIMENT DAMS TYPE - B
AND TEMPORARY ROCK SILT CHECKS TYPE - A AT
DRAINAGE OUTLETS.



SEE SHEET 6 FOR PROFILE OF -L-
SEE SHEET S-?? THRU S-??
FOR STRUCTURE PLANS

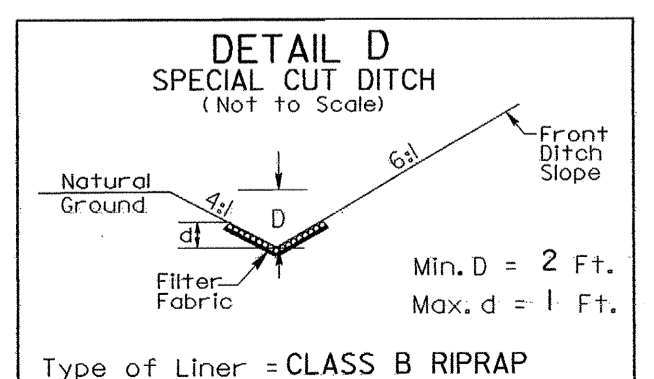
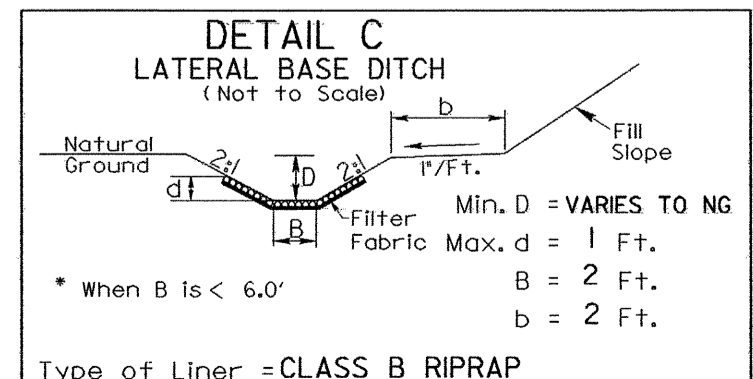
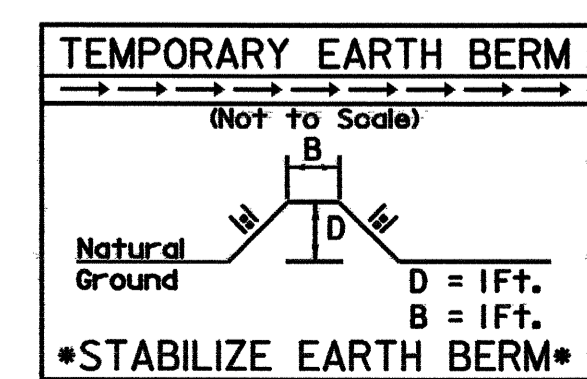
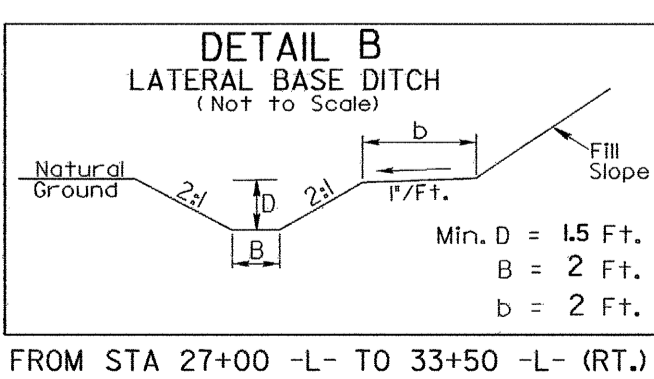


MATCH LINE -L- STA. 22+00.00 SEE SHEET 4

26 x 10 x 3
1.5 inch Skimmer
with 1.0 inch
Orifice Diameter
4 ft. weir
ID 5.1

88 x 18 x 3
2.5 inch Skimmer
with 2.25 inch
Orifice Diameter
6 ft. weir
ID 5.2

30 x 14 x 3
5' weir
ID 5.3

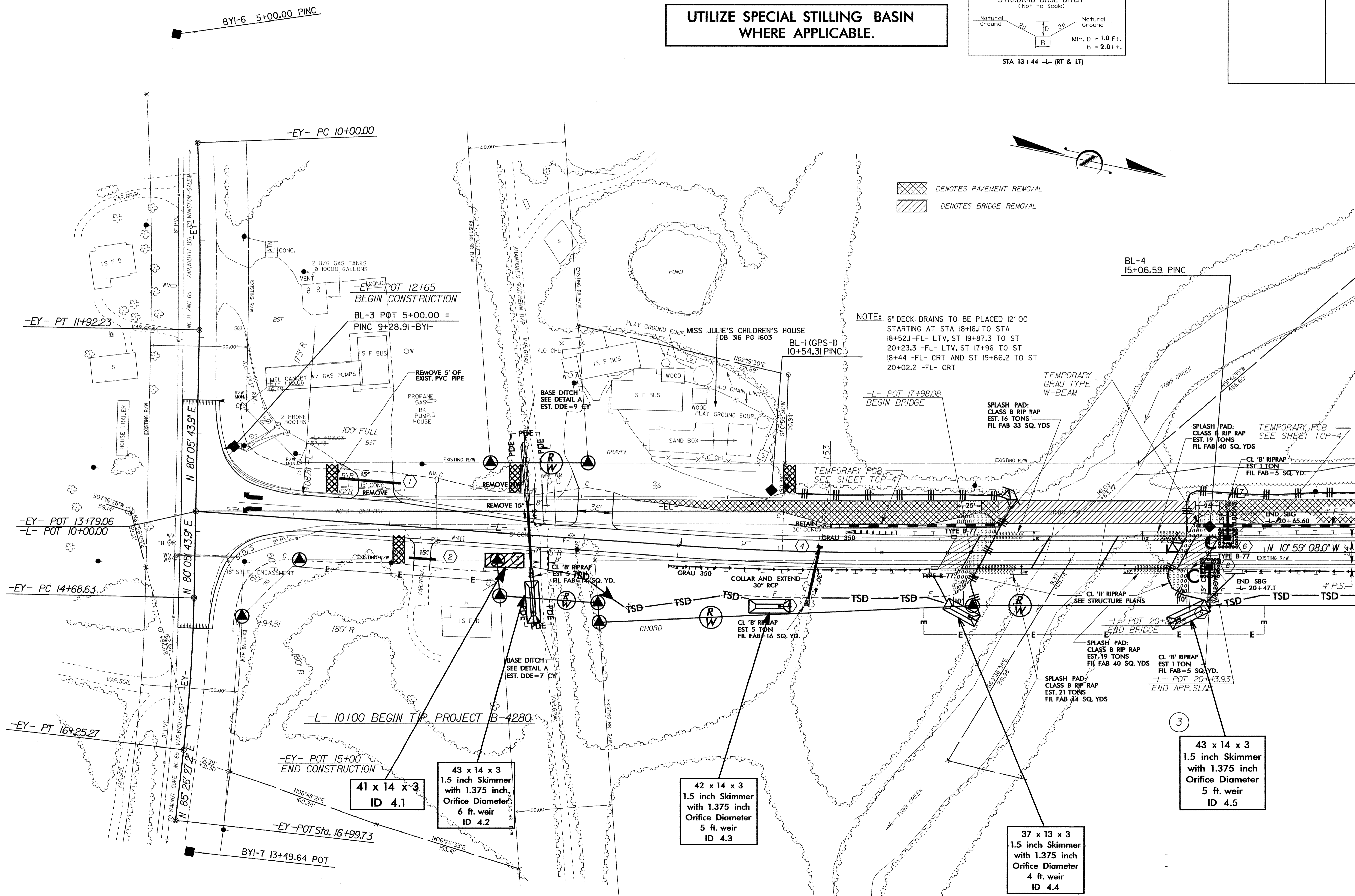
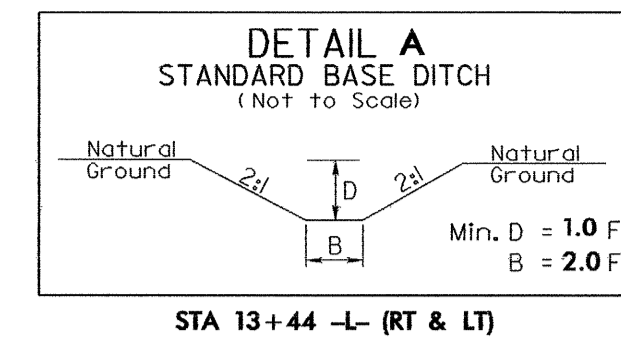


MATCH LINE -L- STA. 22+00.00 SEE SHEET 4

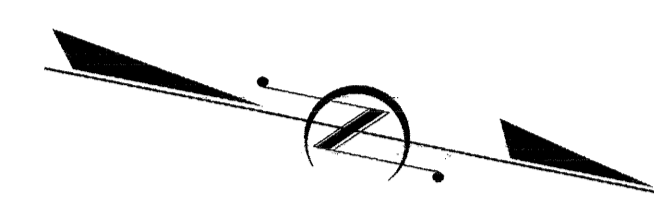
-L- 36+70 END TIP PROJECT B-4280

PROJECT REFERENCE NO.		SHEET NO.	
B-4280		EC-6/CONST.4	
RW SHEET NO.			
ROADWAY DESIGN ENGINEER		HYDRAULICS ENGINEER	

UTILIZE SPECIAL STILLING BASIN WHERE APPLICABLE.



DENOTES PAVEMENT REMOVAL
 DENOTES BRIDGE REMOVAL



NOTE: 6" DECK DRAINS TO BE PLACED 12' OC STARTING AT STA 18+6.1 TO STA 18+52.1 -FL- LTV, ST 19+87.3 TO STA 20+23.3 -FL- LTV, ST 17+96 TO STA 18+44 -FL- CRT AND ST 19+66.2 TO STA 20+02.2 -FL- CRT

MATCH LINE -L- STA 22+00.00 SEE SHEET 5

41 x 14 x 3
ID 4.1

43 x 14 x 3
1.5 inch Skimmer
with 1.375 inch
Orifice Diameter
6 ft. weir
ID 4.2

42 x 14 x 3
1.5 inch Skimmer
with 1.375 inch
Orifice Diameter
5 ft. weir
ID 4.3

43 x 14 x 3
1.5 inch Skimmer
with 1.375 inch
Orifice Diameter
5 ft. weir
ID 4.5

37 x 13 x 3
1.5 inch Skimmer
with 1.375 inch
Orifice Diameter
4 ft. weir
ID 4.4

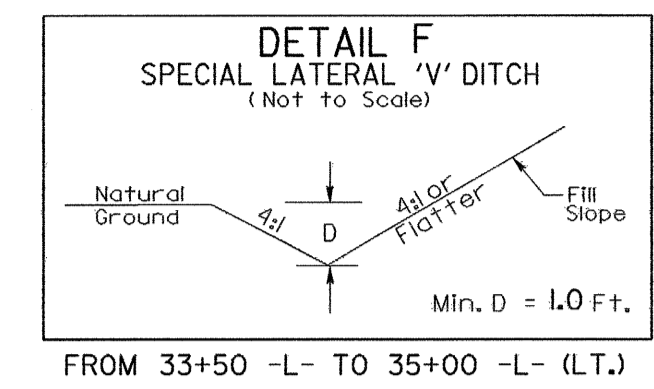
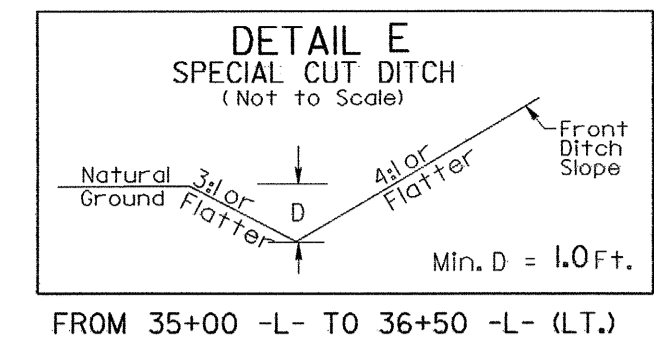
3

8/17/99

UTILIZE SPECIAL STILLING BASIN WHERE APPLICABLE.

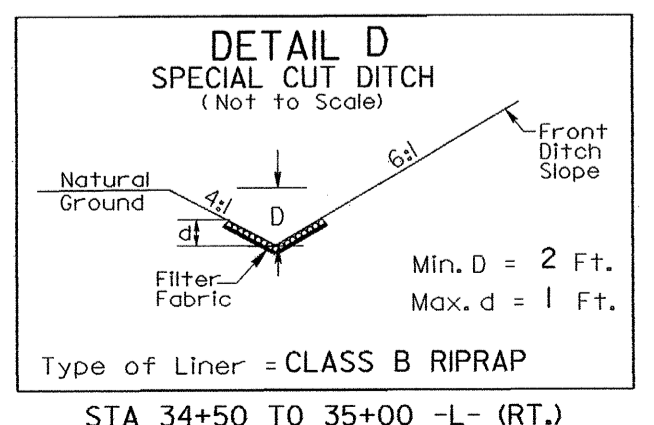
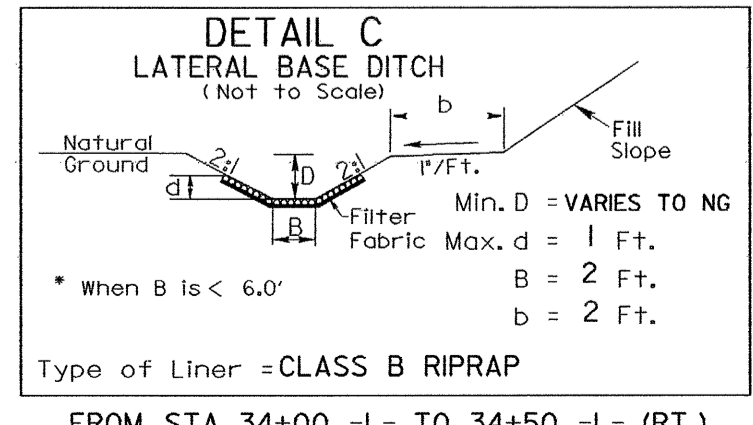
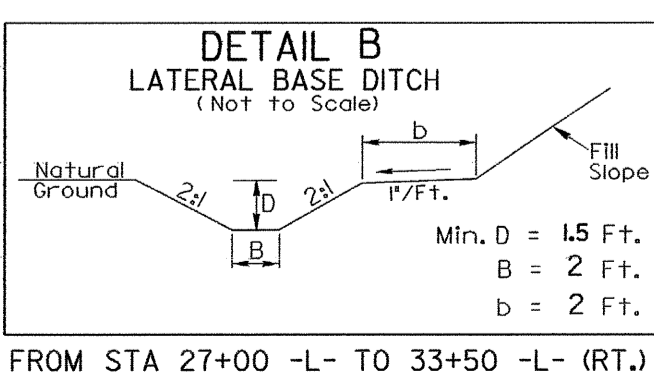
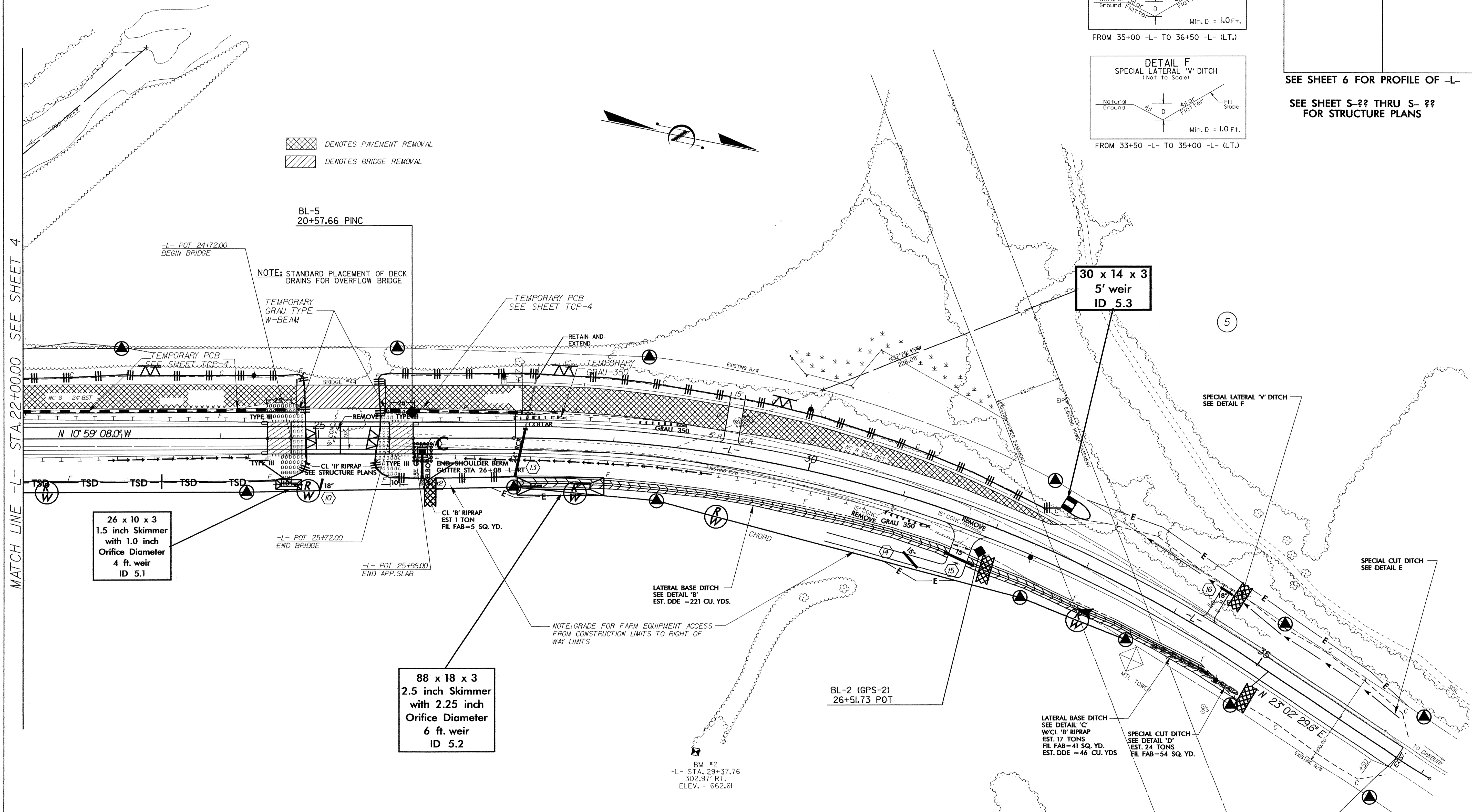
PROJECT REFERENCE NO. B-4280	SHEET NO. EC-7/CONST.5
RW SHEET NO.	
ROADWAY DESIGN ENGINEER	HYDRAULICS ENGINEER

SEE SHEET 6 FOR PROFILE OF -L-
SEE SHEET S-?? THRU S-?? FOR STRUCTURE PLANS



DENOTES PAVEMENT REMOVAL
DENOTES BRIDGE REMOVAL

MATCH LINE -L- STA. 22+00.00 SEE SHEET 4



-L- 36+70 END TIP PROJECT B-4280