



NC DEPARTMENT OF TRANSPORTATION ATTENTION
DIVISION OF HIGHWAYS
BRIDGE MAINTENANCE UNIT

BRIDGE INSPECTION REPORT

INSPECTION TYPE: Routine Inspection

COUNTY CUMBERLAND BRIDGE NUMBER 250154 INSPECTION CYCLE 2 YRS
ROUTE SR1815 ACROSS I95 M.P. 0

LOCATION 1.0 MI. W. JCT. SR1005

SUPERSTRUCTURE RC FLOOR ON RC DECK GIRDERS

SUBSTRUCTURE E.BTS&INT.BTS:RC CAPS/RC PILES

SPANS 1@53';2@57'6;1@53'

LONGITUDE 78° 42' 58.2" LATITUDE 35° 9' 33.7"

PRESENT CONDITION FAIR INVENTORY RATING H5-21

INSPECTION DATE 03/11/2007 OPERATING RATING H5-35

PRESENT POSTING Not Posted PROPOSED POSTING N.P.

COMPUTER UPDATE 6-20-07 ANALYSIS DATE 5-24-07

POSTING LETTER DATE _____ SUFFICIENCY RATING _____

OTHER SIGNS PRESENT 4 LOW CLEARANCE, 4 DELINEATORS



LOOKING EAST

SIGN NOTICE ISSUED FOR	NUMBERED REQUIRED
<u>No</u> WEIGHT LIMIT	_____
<u>No</u> DELINEATORS	_____
<u>No</u> NARROW BRIDGE	_____
<u>No</u> ONE LANE BRIDGE	_____
<u>No</u> LOW CLEARANCE	_____

NATIONAL BRIDGE INVENTORY----- STRUCTURE INVENTORY AND APPRAISAL

IDENTIFICATION				CLASSIFICATION		CODE
(1) STATE NAME -NORTH CAROLINA	BRIDGE	250154		SUFFICIENCY RATING =		48.5
(8) STRUCTURE NUMBER(FEDERAL)		00000000510154		STATUS =	Not Deficient	
INVENTORY ROUTE (ON/UNDER) - ON		131018150				
(2) STATE HIGHWAY DEPARTMENT DISTRICT		6		(112)NBIS BRIDGE SYSTEM -		YES
(3) COUNTY CODE 51	(4) PLACE CODE			(104)HIGHWAY SYSTEM	NON NHS Route	0
(6) FEATURE INTERSECTED - 195				(26) FUNCTIONAL CLASS -	Major Collector	07
(7) FACILITY CARRIED SR1815				(100)STRAHNET HIGHWAY -	Not a STRAHNET Route	0
(9) LOCATION 1.0 MI. W. JCT. SR1005				(101)PARALLEL STRUCTURE -	No Parallel Structure	N
(11)MILEPOINT		0		(102)DIRECTION OF TRAFFIC -	2-way Traffic	2
(16)LAT 35° 9' 33.7"	(17)LONG 78° 42' 58.2"			(103)TEMPORARY STRUCTURE -	Not Temporary	
(98)BORDER BRIDGE STATE CODE	PCT SHARE			(110)DESIGNATED NATIONAL NETWORK -	Not Part of	0
(99)BORDER BRIDGE STRUCTURE NO				(20) TOLL	On Free Road	3
STRUCTURE TYPE AND MATERIAL				(31) MAINTAIN -	State Highway Agency	01
(43) STRUCTURE TYPE MAIN: Concrete				(22) OWNER -	State Highway Agency	01
TYPE - Tee Beam	CODE	104		(37) HISTORICAL SIGNIFICANCE -	Not Eligible	5
(44) STRUCTURE TYPE APPR :				CONDITION		
TYPE -	CODE			(58) DECK		4
(45) NUMBER OF SPANS IN MAIN UNIT		4		(59) SUPERSTRUCTURE		4
(46) NUMBER OF APPROACH SPANS		0		(60) SUBSTRUCTURE		5
(107)DECK STRUCTURE TYPE - Concrete cast-in-place	CODE	1		(61) CHANNEL & CHANNEL PROTECTION		N
(108)WEARING SURFACE / PROTECTIVE SYSTEM :				(62) CULVERTS		N
(A) TYPE OF WEARING SURFACE - Concrete	CODE	1		LOAD RATING AND POSTING		
(B) TYPE OF MEMBRANE - None	CODE	0		(31) DESIGN LOAD	HS 15	3
(C) TYPE OF DECK PROTECTION - None	CODE	0		(64) OPERATING RATING -	HS-35	163
AGE AND SERVICE				(66) INVENTORY RATING -	HS-21	137
(27) YEAR BUILT		1956		(70) BRIDGE POSTING -	Posting Required	5
(106)YEAR RECONSTRUCTED		0		(41) STRUCTURE OPEN, POSTED ,OR CLOSED		A
(42) TYPE OF SERVICE : ON - Highway				DESCRIPTION -	Open, No Restriction	
UNDER - Highway	CODE	11		APPRAISAL		
(28) LANES: ON STRUCTURE 2 UNDER STRUCTURE		4		(67) STRUCTURAL EVALUATION		4
(29) AVERAGE DAILY TRAFFIC		2800		(68) DECK GEOMETRY		4
(30) YEAR OF ADT 2004	(109) TRUCK ADT PCT	7 %		(69) UNDERCLEARANCES,VERTI & HORIZ		2
(19) BYPASS OR DETOUR LENGTH		1 MI		(71) WATERWAY ADEQUACY		N
GEOMETRIC DATA				(72) APPROACH ROADWAY ALIGNMENT		8
(48) LENGTH OF MAXIMUM SPAN		58 FT		(36) TRAFFIC SAFETY FEATURES		1111
(49) STRUCTURE LENGTH		221 FT		(11)SCOUR CRITICAL BRIDGES		N
(50)CURB OR SIDEWALK: LEFT 0.1 FT RIGHT		0.1 FT		PROPOSED IMPROVEMENTS		
(51) BRIDGE ROADWAY WIDTH CURB TO CURB		28.1 FT		(75) TYPE OF WORK -	CODE	311
(52) DECK WIDTH OUT TO OUT		31.5 FT		(76) LENGTH OF STRUCTURE IMPROVEMENT		221 FT
(32) APPROACH ROADWAY WIDTH (W/SHOULDERS)		18.0 FT		(94) BRIDGE IMPROVEMENT COST		\$534,000
(33) BRIDGE MEDIAN - No Median	CODE	0		(95) ROADWAY IMPROVEMENT COST		\$134,000
(34) SKEW 20° (35) STRUCTURE FLARED		NO		(96) TOTAL PROJECT COST		\$801,000
(10) INVENTORY ROUTE MIN VERT CLEAR		99 FT 99 IN		(97) YEAR OF IMPROVEMENT COST ESTIMATE		207
(47) INVENTORY ROUTE TOTAL HORIZ CLEAR		28.1 FT		(114)FUTURE ADT 5600	(115) YEAR FUTURE ADT	2025
(53) MIN VERT CLEAR OVER BRIDGE RDWY		99 FT 99 IN		INSPECTIONS		
(54) MIN VERT UNDERCLEAR REF Highway		14 FT 08 IN		(90) INSPECTION DATE		03/11/2007
(55) MIN LAT UNDERCLEAR RT REF Highway		10.0 FT		(92) CRITICAL FEATURE INSPECTION :	(93) CFI DATE	
(56) MIN LAT UNDERCLEAR LT REF -		17.0 FT		A) FRACTURE CRIT DETAIL -	NO	A)
NAVIGATION DATA				B) UNDERWATER INSP -	NO	B)
(38) NAVIGATION CONTROL - Not Applicable	CODE	N		C) OTHER SPECIAL INSP	NO	C)
(111)PIER PROTECTION - Not Applicable	CODE			SCOUR		
(39) NAVIGATION VERTICAL CLEARANCE		0				
(116)VERT - LIFT BRIDGE NAV MIN VERT CLEAR		0				
(40) NAVIGATION HORIZONTAL CLEARANCE		0				

NATIONAL BRIDGE INVENTORY----- STRUCTURE INVENTORY AND APPRAISAL

IDENTIFICATION				CLASSIFICATION			
(1) STATE NAME -NORTH CAROLINA	BRIDGE	250154		SUFFICIENCY RATING =			48.5
(8) STRUCTURE NUMBER(FEDERAL)		000000000510154		STATUS =	Not Deficient		
INVENTORY ROUTE (ON/UNDER) - UNDER		211000950					
(2) STATE HIGHWAY DEPARTMENT DISTRICT		6					
(3) COUNTY CODE	51	(4) PLACE CODE		(112)NBIS BRIDGE SYSTEM -			YES
(6) FEATURE INTERSECTED -	I95			(104)HIGHWAY SYSTEM	NHS Route		1
(7) FACILITY CARRIED	SR1815			(26) FUNCTIONAL CLASS -	Arterial - Interstate		01
(9) LOCATION	1.0 MI. W. JCT. SR1005			(100)STRAHNET HIGHWAY -	Interstate STRAHNET Route		1
(11)MILEPOINT		0		(101)PARALLEL STRUCTURE -	No Parallel Structure		N
(16)LAT	35° 9' 33.7"	(17)LONG	78° 42' 58.2"	(102)DIRECTION OF TRAFFIC -	2-way Traffic		2
(98)BORDER BRIDGE STATE CODE		PCT SHARE		(103)TEMPORARY STRUCTURE -	Not Temporary		
(99)BORDER BRIDGE STRUCTURE NO				(110)DESIGNATED NATIONAL NETWORK -	Is Part of		
				(20) TOLL	On Free Road		3
				(31) MAINTAIN -	State Highway Agency		01
				(22) OWNER -	State Highway Agency		01
				(37) HISTORICAL SIGNIFICANCE -	Not Eligible		5
STRUCTURE TYPE AND MATERIAL				CONDITION			
(43) STRUCTURE TYPE MAIN:	Concrete			(58) DECK			4
TYPE -	Tee Beam	CODE	104	(59) SUPERSTRUCTURE			4
(44) STRUCTURE TYPE APPR :				(60) SUBSTRUCTURE			5
TYPE -		CODE		(61) CHANNEL & CHANNEL PROTECTION			N
(45) NUMBER OF SPANS IN MAIN UNIT			4	(62) CULVERTS			N
(46) NUMBER OF APPROACH SPANS			0				
(107)DECK STRUCTURE TYPE -	Concrete cast-in-place	CODE	1	LOAD RATING AND POSTING			
(108)WEARING SURFACE / PROTECTIVE SYSTEM :				(31) DESIGN LOAD	HS 15		3
(A) TYPE OF WEARING SURFACE -	Concrete	CODE	1	(64) OPERATING RATING -	HS-35		163
(B) TYPE OF MEMBRANE	None	CODE	0	(66) INVENTORY RATING -	HS-21		137
(C) TYPE OF DECK PROTECTION -	None	CODE	0	(70) BRIDGE POSTING -	Posting Required		5
				(41) STRUCTURE OPEN, POSTED ,OR CLOSED			A
				DESCRIPTION -	Open, No Restriction		
AGE AND SERVICE				APPRAISAL			
(27) YEAR BUILT			1956	(67) STRUCTURAL EVALUATION			4
(106)YEAR RECONSTRUCTED			0	(68) DECK GEOMETRY			4
(42) TYPE OF SERVICE : ON -	Highway			(69) UNDERCLEARANCES,VERTI & HORIZ			2
UNDER - Highway		CODE	11	(71) WATERWAY ADEQUACY			N
(28) LANES: ON STRUCTURE	2 UNDER STRUCTURE		4	(72) APPROACH ROADWAY ALIGNMENT			8
(29) AVERAGE DAILY TRAFFIC			44000	(36) TRAFFIC SAFETY FEATURES			1111
(30) YEAR OF ADT	2004	(109) TRUCK ADT PCT	7 %	(11)SCOUR CRITICAL BRIDGES			N
(19) BYPASS OR DETOUR LENGTH			1 MI	PROPOSED IMPROVEMENTS			
GEOMETRIC DATA				(75) TYPE OF WORK -		CODE	311
(48) LENGTH OF MAXIMUM SPAN			58 FT	(76) LENGTH OF STRUCTURE IMPROVEMENT			221 FT
(49) STRUCTURE LENGTH			221 FT	(94) BRIDGE IMPROVEMENT COST			\$534,000
(50)CURB OR SIDEWALK: LEFT	0.1 FT RIGHT		0.1 FT	(95) ROADWAY IMPROVEMENT COST			\$134,000
(51) BRIDGE ROADWAY WIDTH CURB TO CURB			28.1 FT	(96) TOTAL PROJECT COST			\$801,000
(52) DECK WIDTH OUT TO OUT			31.5 FT	(97) YEAR OF IMPROVEMENT COST ESTIMATE			207
(32) APPROACH ROADWAY WIDTH (W/SHOULDERS)			18.0 FT	(114)FUTURE ADT	5600	(115) YEAR FUTURE ADT	2025
(33) BRIDGE MEDIAN -	No Median	CODE	0	INSPECTIONS			
(34) SKEW	20° (35) STRUCTURE FLARED		NO	(90) INSPECTION DATE			03/11/2007
(10) INVENTORY ROUTE MIN VERT CLEAR			14 FT 09 IN	(92) CRITICAL FEATURE INSPECTION :		(93) CFI DATE	
(47) INVENTORY ROUTE TOTAL HORIZ CLEAR			47.4 FT	A) FRACTURE CRIT DETAIL -	NO	A)	
(53) MIN VERT CLEAR OVER BRIDGE RDWY			99 FT 99 IN	B) UNDERWATER INSP -	NO	B)	
(54) MIN VERT UNDERCLEAR REF	Highway		14 FT 08 IN	C) OTHER SPECIAL INSP	NO	C)	
(55) MIN LAT UNDERCLEAR RT REF	Highway		10.0 FT	SCOUR			
(56) MIN LAT UNDERCLEAR LT REF -			17.0 FT	NAVIGATION DATA			
(38) NAVIGATION CONTROL -	Not Applicable	CODE	N	(111)PIER PROTECTION -	Not Applicable	CODE	
(116)VERT - LIFT BRIDGE NAV MIN VERT CLEAR			0	(39) NAVIGATION VERTICAL CLEARANCE			0
(40) NAVIGATION HORIZONTAL CLEARANCE			0	(116)VERT - LIFT BRIDGE NAV MIN VERT CLEAR			0

BRIDGE INSPECTION RECORD AND SUMMARY

INSPECTION TYPE Routine Inspection
 BRIDGE NO. 250154 COUNTY CUMBERLAND ROUTE SR1815 OVER I95
 STRUCTURE TYPE RC FLOOR ON RC DECK GIRDERS
 ROUTE ORIENTATION W - E SPANS 1@53';2@57'6;1@53'

EVALUATION CODE: 0-2 CRITICAL, 3 & 4 POOR, 5 & 6 FAIR, 7-9 GOOD

INSPECTION ITEM			ITEM 61		
DECK ITEMS		GRADES			
1. WEARING SURFACE			45. CHANNEL & CHANNEL PROT.	a. WATERWAY	
2. DECK NO. OF EA TYPE SPN GRADE RATES SI & A ITEM 58				b. ALIGNMENT	
a. CONCRETE	4	4		c. SCOUR	
b. TIMBER				d. SLOPE PROT., RIP-RAP, DIKES, ETC.	
3. RAILING			50. APPROACH ROADWAY CONDITION		7
a. CONCRETE		6	51. APPROACH SLABS		
b. TIMBER			52. PAINT SYSTEM CODE		
c. ALUMINUM			53. UTILITIES		
d. STEEL		7	54. RESPONSE TO LIVE LOAD		8
4. CURBS, WHEELGUARDS, PARAPETS, MEDIANS			55. ESTIMATED REMAINING LIFE		9
5. WALKWAYS (ON OR ATTACHED TO STRUCTURE)			60. REGULATORY SIGN NOTICE ISSUED		No
6. DECK EXP JTS. OR DEVICES. NO. OF EACH			61. PROMPT-ACTION NOTICE ISSUED		No
a. STEEL PL OR FINGER			62. PRESENTLY POSTED		No
b. MISC PREFAB			63. TOT. FIELD INSP TIME (INCLUDE WRITE UP)(MAN HR)		10
c. COMPRESSION SEAL			64. TOTAL SNOOPER INSP. TIME (HRS)		0
d. STANDARD JOINTS		4	65. TOTAL TRAFFIC CONTROL TIME (MAN HRS)		0
e. OPEN JOINTS			70. SI&A GENERAL CONDITION RATINGS		
7. DECK DEBRIS (INCLUDES EXCESS SAND/GRAVEL)			a. DECK	ITEM 58	4
SUPER STR. (FM. 1 (90)B TRUSS) ITEM 59			b. SUPERSTRUCTURE	ITEM 59	4
10. LONGITUDINAL BEAMS OR GIRDERS			c. SUBSTRUCTURE	ITEM 60	5
11. LONGITUDINAL JOIST OR STRINGERS			d. CHANNEL & CHANNEL PROT.	ITEM 61	
12. INT. DIAP'S, X-FRAMES, BRACING & CONN'S			71. SI&A FIELD APPRAISAL RATINGS		
13. END DIAP'S, CURTAIN WALLS, & CONN'S			a. WATERWAY ADAQUACY		NA
14. FLOOR BEAMS AND CONNECTIONS			b. APPR. RDWY. ALIGNMENT		8
15. BEARING ASSEMBLIES (INCLUDING MISALIGN)			72. FIELD SCOUR EVALUATION		
16. DRAINAGE SYSTEM (ON STRUCTURE)					N
17. MOVABLE SPAN MACHINERY			USE OF INSP. ACCESSIBILITY EQUIPMENT		
SUB STR. ITEMS. ITEM 60 (INCLUDE SCOUR)			SNOOPER (CODE S, 4, OR N)	HRS	No
35. TIM SUB STR.	a. ABUT. & INT. BENT CAPS & RISERS		LADDER		No
	b. PILES, POST, SILLS, & BRACING		BUCKET TRUCK		No
	c. BULKHEADS, WING'S, & TIE BACKS		BOAT		No
36. CONC SUB STR.	a. ABUT. & INT. BENT CAPS	5	OTHER		No
	b. ABUT. & BENT COL'S BREASTWALLS				
	c. ABUT. & INT. BENT PILES	7			
	d. BACKWALLS, WING'S, RETAIN. WALLS	6			
	e. ABUT. & BENT FOOTINGS & SILLS				
37. STEEL SUB STR.	a. ABUT. & INT. BENT CAPS & RISERS		SPECIAL INSPECTION REQUESTED FOR		
	b. PILES, BRACING, AND BULKHEADS				
38. FOUNDATION PILES TYPE MATERIAL			NOTE		
39. SLOPE PROT., RIP-RAP (INCLUDE DRAINAGE)			8		
40. FENDER SYSTEMS			80. INSPECTED BY:	<i>James E. Mandel</i>	
41. DRIFT			81. REVIEWED BY:		

Bridge I&A Form 1(82)H		FIELD INSPECTION REPORT <u>Bridge Inspeccion & Analysis</u>
State of North Carolina		
Dept. of Transportation Division of Highways		
Team Leader JAMES E. MONDOLFI		
Assisted By CLS		
Item No.	Grade	
2a	4	<p>ROUGH AND WORN SURFACE WITH EXPOSED AGGREGATE AND HAIRLINE MAP CRACKING IN TOP OF DECK, SPAN 1 SHOWN, SIMILAR CONDITION THROUGHOUT (SEE PHOTO).</p> <p>1/8 IN TRANSVERSE CRACKS WITH IMMINENT SPALL IN TOP OF DECK AT DECK EXPANSION JOINT AT BENT 1 (SEE PHOTO).</p> <p>14 IN X 36 IN X 3 IN DEEP SPALL WITH EXPOSED REBAR IN TOP OF DECK AT DECK EXPANSION JOINT AT BENT 1 (SEE PHOTO).</p> <p>HAIRLINE TO 1/8 IN TRANSVERSE CRACKS IN TOP OF DECK THROUGHOUT SPAN 4 (SEE PHOTO).</p> <p>9 IN X 12 FT X 3 IN DEEP SPALL WITH EXPOSED REBAR IN TOP OF DECK WITH ADDITIONAL AREAS OF BROKEN CONCRETE AT DECK EXPANSION JOINT AT BENT 2 (SEE PHOTO).</p> <p>6 IN X 24 IN X 3 IN DEEP SPALL WITH EXPOSED REBAR IN TOP OF DECK AT DECK EXPANSION JOINT AT BENT 2 (SEE PHOTO).</p> <p>HAIRLINE TO 1/8 IN TRANSVERSE CRACKS IN TOP OF DECK AT DECK EXPANSION JOINT AT BENT 3 (SEE PHOTO).</p> <p>TRANSVERSE HAIRLINE CRACKS IN TOP OF DECK THROUGHOUT SPANS 1 AND 2, SPAN 2 SHOWN (SEE PHOTO).</p> <p>TRANSVERSE HAIRLINE CRACK WITH EFFLORESCENCE IN BOTTOM OF DECK THROUGHOUT SPAN 4 (SEE PHOTO).</p> <p>18 IN X 18 IN IMMINENT SPALL IN BOTTOM OF OUT SOUTH DECK OVERHANG AT BENT 2 (SEE PHOTO).</p>
3a	6	WEATHERING AND SCALING OF BRIDGE RAIL WITH EXPOSED AGGREGATE (SEE PHOTO).
3d	7	IMPACT DAMAGE TO SOUTH STEEL BRIDGE RAIL, 18 FT FROM END BENT 1 (SEE PHOTO).
4	7	WEATHERING AND SCALING OF CURB WITH EXPOSED AGGREGATE (SEE PHOTO).
6d	4	DRIED AND MISSING JOINT MATERIAL AND JOINT SEALER ALONG DECK EXPANSION JOINT AT BENT 1, SIMILAR CONDITION AT DECK EXPANSION JOINT AT BENTS 2 AND 3 (SEE PHOTO).
7	5	DIRT AND DEBRIS WITH VEGETATION GROWING ALONG NORTH CURB, SIMILAR CONDITION AT SOUTH CURB (SEE PHOTO).
10	4	<p>4 IN X 12 IN X 1/2 IN DEEP AND 2 IN X 5 IN X 1/2 IN DEEP SPALLS WITH EXPOSED REBAR IN FACE OF GIRDER 1, SPAN 4, NEAR END BENT 2 (SEE PHOTO).</p> <p>4 IN X 4 IN X 1/2 IN DEEP SPALL WITH EXPOSED REBAR IN FACE OF GIRDER 1, SPAN 4, NEAR END BENT 2 (SEE PHOTO).</p> <p>4 IN X 6 IN X 1/2 IN DEEP SPALL WITH EXPOSED REBAR IN FACE OF GIRDER 1, SPAN 4, NEAR END BENT 2 (SEE PHOTO).</p> <p>2 IN X 9 IN X 1/2 IN DEEP AND 2 IN X 3 IN X 1/2 IN DEEP SPALLS WITH EXPOSED REBAR IN FACE OF GIRDER 3, SPAN 4 NEAR END BENT 2 (SEE PHOTO).</p>

Bridge I&A Form 1(82)H		FIELD INSPECTION REPORT <u>Bridge Inspeccion & Analysis</u>	
State of North Carolina Dept. of Transportation Division of Highways			
Team Leader JAMES E. MONDOLFI			
Assisted By CLS			
Item No.	Grade		
		<p>19 IN X 5 IN X 3 IN DEEP SPALL IN FACE OF GIRDER 4, SPAN 4, AT BENT 2, SIMILAR SPALL AT GIRDER 1, SPAN 2 AT BENT 2 AND GIRDER 1, SPAN 3 AT BENT 3 (SEE PHOTO).</p> <p>19 IN X 5 IN X 3 IN DEEP SPALL IN OUTSIDE FACE OF GIRDER 4, SPAN 4, AT BENT 3 (SEE PHOTO).</p> <p>3 IN X 12 IN X 1/2 IN DEEP SPALL WITH EXPOSED REBAR IN FACE OF GIRDER 1, SPAN 3, AT BENT 3, 3 TOTAL (SEE PHOTO).</p> <p>4 IN X 9 IN X 1/2 IN DEEP SPALL WITH EXPOSED REBAR IN RIGHT FACE OF GIRDER 1, SPAN 2, NEAR BENT 2 (SEE PHOTO).</p> <p>2 IN X 15 IN X 1/2 IN DEEP SPALL WITH EXPOSED REBAR IN RIGHT FACE OF GIRDER 1, SPAN 2, NEAR BENT 1, 3 TOTAL (SEE PHOTO).</p> <p>9 IN X 9 IN X 1 IN DEEP SPALL WITH EXPOSED REBAR IN BOTTOM OF GIRDER 2, SPAN 1, AT BENT 1, SIMILAR SPALLS IN GIRDERS 3 AND 4 (SEE PHOTO).</p> <p>24 INLONG X 1/4 IN VERTICAL CRACK IN END OF GIRDER 1 AT BENT 1, SPAN 1 SIDE, SIMILAR CRACKS AT ENDS OF GIRDERS AT OTHER BENTS (SEE PHOTO).</p>	
13	5	<p>9 IN X 20 IN X 2 IN DEEP SPALL WITH EXPOSED REBAR IN BOTTOM OF END DIAPHRAGM AT BENT 1, BAY 1, SPAN 1 (SEE PHOTO).</p> <p>10 IN X 40 IN X 2 IN DEEP SPALL WITH EXPOSED REBAR IN BOTTOM OF END DIAPHRAGM AT BENT 1, BAY 2, SPAN 2 (SEE PHOTO).</p>	
15	6	<p>RUST AND DELAMINATION OF BEARING AT GIRDER 4, END BENT 2, SIMILAR CONDITION AT GIRDER 1 (SEE PHOTO).</p> <p>RUSTED BEARING AT GIRDER 2, END BENT 2, SIMILAR CONDITION AT GIRDER 3 (SEE PHOTO).</p> <p>RUST AND DELAMINATION OF BEARING AT GIRDER 2, BENT 3, SIMILAR CONDITION AT ALL INTERIOR BENT BEARINGS (SEE PHOTO).</p>	
36a	5	<p>HAIRLINE TO 1/16 IN HORIZONTAL CRACK IN FACE OF END BENT 2 CAP, BAY 1 (SEE PHOTO).</p> <p>VERTICAL HAIRLINE CRACK IN FACE OF END BENT 2 CAP AT STEP, SIMILAR CONDITION AT END BENT 1 (SEE PHOTO).</p> <p>HAIRLINE TO 1/16 IN HORIZONTAL CRACK IN FACE OF BENT 3 CAP BETWEEN PILES 4 AND 6, SPAN 4 SIDE (SEE PHOTO).</p> <p>HAIRLINE TO 1/4 IN HORIZONTAL CRACK IN FACE OF BENT 2 CAP BETWEEN PILES 3 AND 4, SPAN 3 SIDE (SEE PHOTO).</p> <p>HAIRLINE TO 1/8 IN LONGITUDINAL CRACK IN BOTTOM OF BENT 2 CAP AT PILE 7, SIMILAR CRACKS IN BOTTOM OF ALL BENT CAPS (SEE PHOTO).</p> <p>HAIRLINE TO 1/8 IN HORIZONTAL CRACK IN FACE OF BENT 1 CAP BETWEEN PILES 2 AND 6, SPAN 1 SIDE (SEE PHOTO).</p>	
50	7	<p>TRANSVERSE CRACK IN ASPHALT WEARING SURFACE ALONG END BENT 1 FILL FACE (SEE PHOTO). WITH 1/4 IN OF SETTLEMENT</p> <p>TRANSVERSE CRACK IN ASPHALT WEARING SURFACE ALONG END BENT 2 FILL FACE WITH 1/4 IN OF SETTLEMENT (SEE PHOTO).</p>	

BRIDGE INSPECTOR'S RECOMMENDATION FOR MAINTENANCE REPAIRS

Bridge: 250154

County CUMBERLAND

Date: 03/11/2007

These Repairs Should Be Made Within Twelve Months From Date Of This Inspection

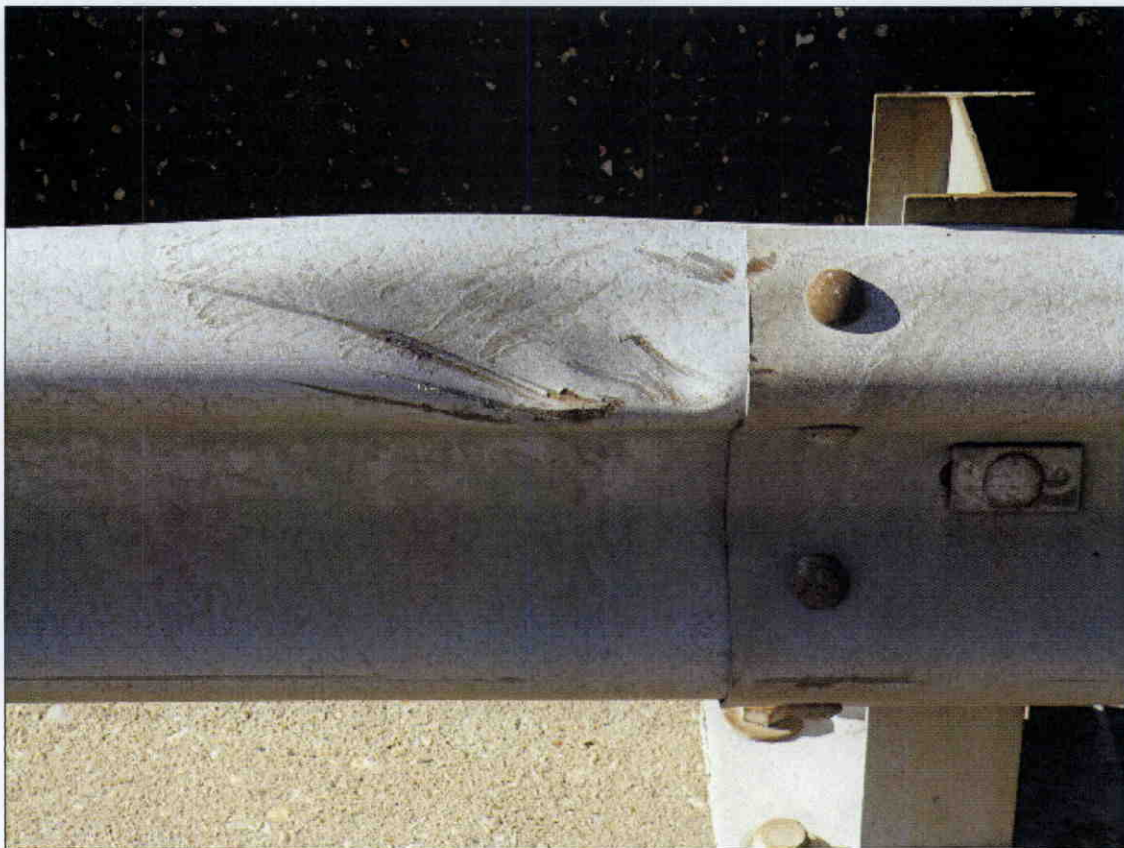
Function Code	Description of Function	Unit	Quantity	Remarks	Est. Cost
556	Bridge approaches, surfacing or pavement replacement or repair	Man-Hours	12	SEAL CRACKS IN ASPHALT WEARING SURFACE.	
560	Maintenance and repairs to concrete bridge floors	Sq-ft	15	REPAIR CRACKS AND PATCH SPALLS IN DECK SLAB.	
576	Maintenance of standard deck expansion joints	Lin-ft	104	CLEAN DECK EXPANSION JOINTS AND INSTALL JOINT MATERIAL AND JOINT SEALER.	
578	General Maintenance of superstructure	Man-Hours	200	REPAIR CRACKS AND PATCH SPALLS IN GIRDERS AND END DIAPHRAGMS.	
602	Sweep or Washing	Man-Hours	12	REMOVE DIRT, DEBRIS AND VEGETATION ALONG CURBS.	



DIRT AND DEBRIS WITH VEGETATION GROWING ALONG NORTH CURB, SIMILAR CONDITION AT SOUTH CURB



TRANSVERSE CRACK IN ASPHALT WEARING SURFACE ALONG END BENT 1 FILL FACE WITH 1/4 IN OF SETTLEMENT



IMPACT DAMAGE TO SOUTH STEEL BRIDGE RAIL, 18 FT FROM END BENT 1



WEATHERING AND SCALING OF CURB WITH EXPOSED AGGREGATE



WEATHERING AND SCALING OF BRIDGE RAIL WITH EXPOSED AGGREGATE



ROUGH AND WORN SURFACE WITH EXPOSED AGGREGATE AND HAIRLINE MAP CRACKING IN TOP OF DECK, SPAN 1 SHOWN, SIMILAR CONDITION THROUGHOUT



DRIED AND MISSING JOINT MATERIAL AND JOINT SEALER ALONG DECK EXPANSION JOINT AT BENT 1,
SIMILAR CONDITION AT DECK EXPANSION JOINT AT BENTS 2 AND 3



1/8 IN TRANSVERSE CRACKS WITH IMMINENT SPALL IN TOP OF DECK AT DECK EXPANSION JOINT AT BENT



14 IN X 36 IN X 3 IN DEEP SPALL WITH EXPOSED REBAR IN TOP OF DECK AT DECK EXPANSION JOINT AT BENT 1



9 IN X 12 FT X 3 IN DEEP SPALL WITH EXPOSED REBAR IN TOP OF DECK WITH ADDITIONAL AREAS OF
BROKEN CONCRETE AT DECK EXPANSION JOINT AT BENT 2



6 IN X 24 IN X 3 IN DEEP SPALL WITH EXPOSED REBAR IN TOP OF DECK AT DECK EXPANSION JOINT AT BENT 2



HAIRLINE TO 1/8 IN TRANSVERSE CRACKS IN TOP OF DECK AT DECK EXPANSION JOINT AT BENT 3



HAIRLINE TO 1/8 IN TRANSVERSE CRACKS IN TOP OF DECK THROUGHOUT SPAN 4



TRANSVERSE HAIRLINE CRACKS IN TOP OF DECK THROUGHOUT SPANS 1 AND 2, SPAN 2 SHOWN



TRANSVERSE CRACK IN ASPHALT WEARING SURFACE ALONG END BENT 2 FILL FACE WITH 1/4 IN OF SETTLEMENT



HAIRLINE TO 1/16 IN HORIZONTAL CRACK IN FACE OF END BENT 2 CAP BAY 1



4 IN X 12 IN X 1/2 IN DEEP AND 2 IN X 5 IN X 1/2 IN DEEP SPALLS WITH EXPOSED REBAR IN FACE OF GIRDER 1, SPAN 4 NEAR END BENT 2



4 IN X 4 IN X 1/2 IN DEEP SPALL WITH EXPOSED REBAR IN FACE OF GIRDER 1, SPAN 4 NEAR END BENT 2



4 IN X 6 IN X 1/2 IN DEEP SPALL WITH EXPOSED REBAR IN FACE OF GIRDER 1, SPAN 4 NEAR END BENT 2



RUST AND DELAMINATION OF BEARING AT GIRDER 4, END BENT 2, SIMILAR CONDITION AT GIRDER 1



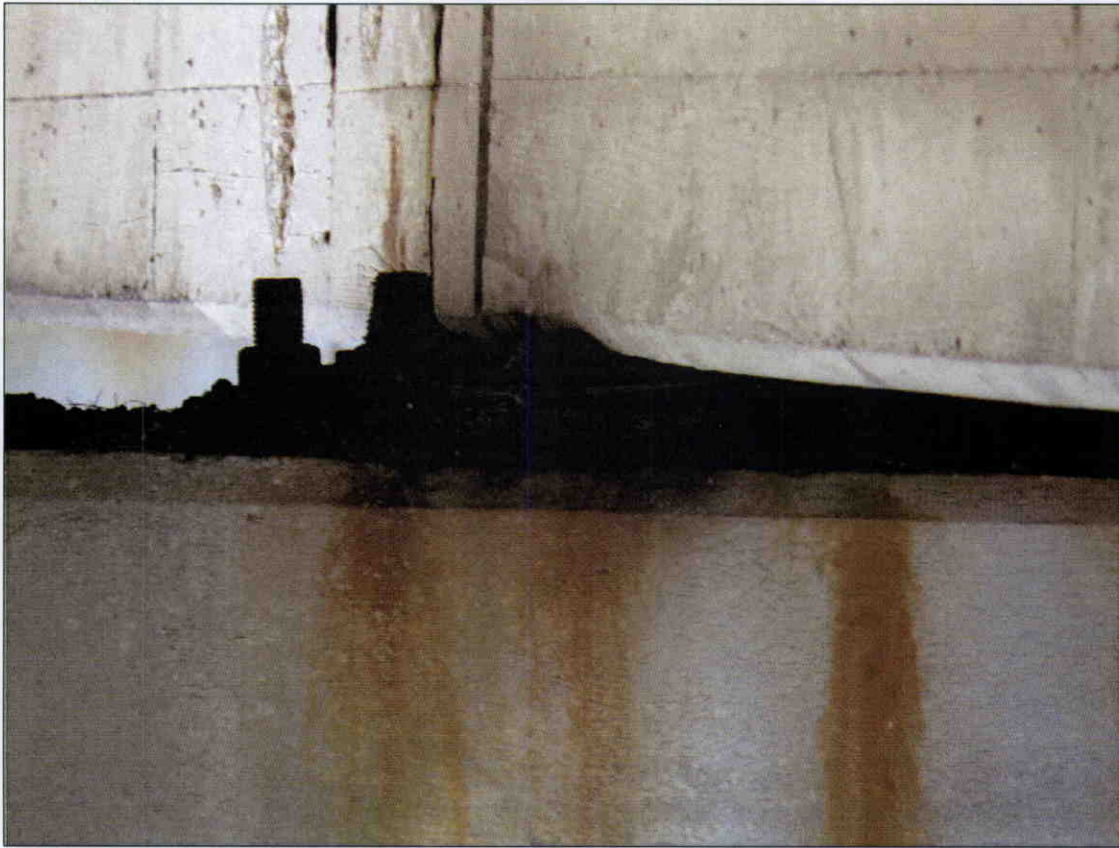
RUSTED BEARING AT GIRDER 2, END BENT 2, SIMILAR CONDITION AT GIRDER 3



VERTICAL HAIRLINE CRACK IN FACE OF END BENT 2 CAP AT STEP, SIMILAR CONDITION AT END BENT 1



2 IN X 9 IN X 1/2 IN DEEP AND 2 IN X 3 IN X 1/2 IN DEEP SPALLS WITH EXPOSED REBAR IN FACE OF GIRDER
3, SPAN 4 NEAR END BENT 2



RUST AND DELAMINATION OF BEARING AT GIRDER 2, BENT 3, SIMILAR CONDITION AT ALL INTERIOR BENT BEARINGS



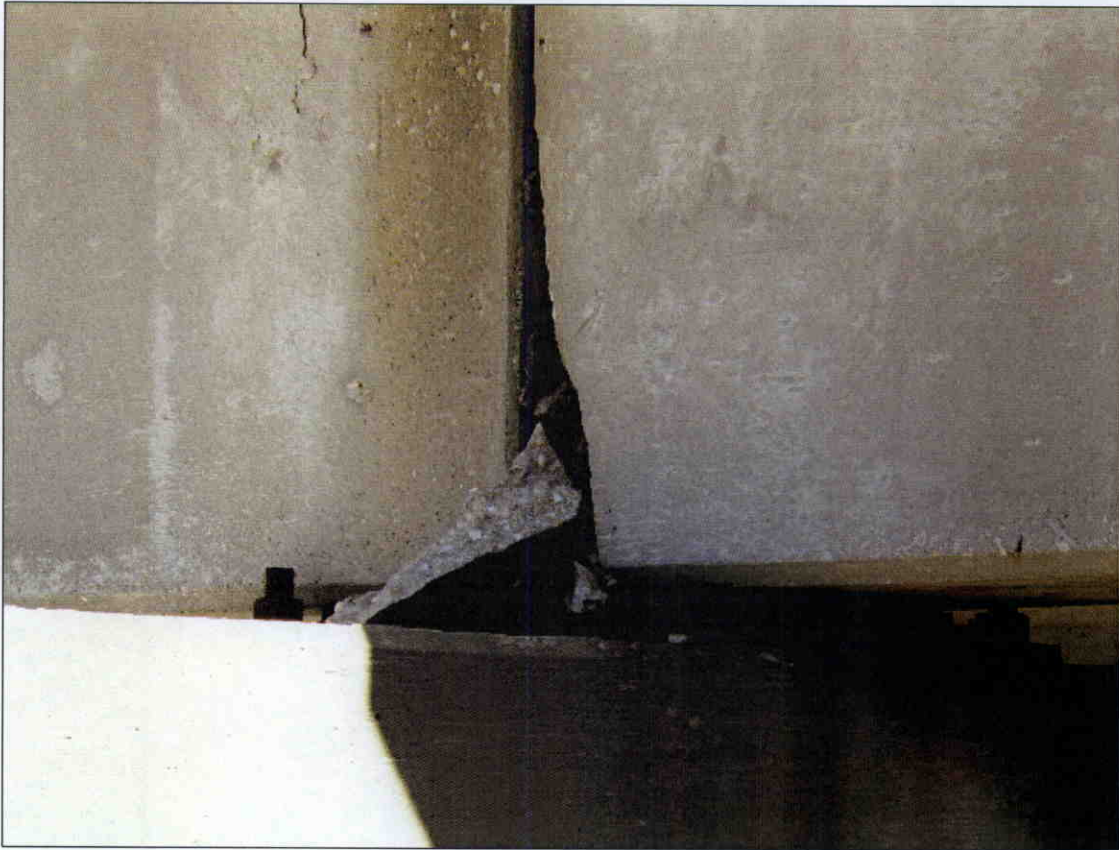
HAIRLINE TO 1/16 IN HORIZONTAL CRACK IN FACE OF BENT 3 CAP BETWEEN PILES 4 AND 6, SPAN 4 SIDE



TRANSVERSE HAIRLINE CRACK WITH EFFLORESCENCE IN BOTTOM OF DECK THROUGHOUT SPAN 4



19 IN X 5 IN X 3 IN DEEP SPALL IN FACE OF GIRDER 4, SPAN 4 AT BENT 3, SIMILAR SPALL AT GIRDER 1, SPAN 2 AT BENT 2 AND GIRDER 1, SPAN 3 AT BENT 3



19 IN X 5 IN X 3 IN DEEP SPALL IN OUTSIDE FACE OF GIRDER 4, SPAN 4 AT BENT 3



3 IN X 12 IN X 1/2 IN DEEP SPALL WITH EXPOSED REBAR IN FACE OF GIRDER 1, SPAN 3 AT BENT 3, 3 TOTAL



18 IN X 18 IN IMMINENT SPALL IN BOTTOM OF OUT SOUTH DECK OVERHANG AT BENT 2



HAIRLINE TO 1/4 IN HORIZONTAL CRACK IN FACE OF BENT 2 CAP BETWEEN PILES 3 AND 4, SPAN 3 SIDE



HAIRLINE TO 1/8 IN LONGITUDINAL CRACK IN BOTTOM OF BENT 2 CAP AT PILE 7, SIMILAR CRACKS IN BOTTOM OF ALL BENT CAPS



4 IN X 9 IN X 1/2 IN DEEP SPALL WITH EXPOSED REBAR IN RIGHT FACE OF GIRDER 1, SPAN 2 NEAR BENT 2



2 IN X 15 IN X 1/2 IN DEEP SPALL WITH EXPOSED REBAR IN RIGHT FACE OF GIRDER 1, SPAN 2 NEAR BENT
1, 3 TOTAL



9 IN X 20 IN X 2 IN DEEP SPALL WITH EXPOSED REBAR IN BOTTOM OF END DIAPHRAGM AT BENT 1, BAY 1, SPAN 1



10 IN X 40 IN X 2 IN DEEP SPALL WITH EXPOSED REBAR IN BOTTOM OF END DIAPHRAGM AT BENT 1, BAY 2, SPAN 2



HAIRLINE TO 1/8 IN HORIZONTAL CRACK IN FACE OF BENT 1 CAP BETWEEN PILES 2 AND 6, SPAN 1 SIDE



9 IN X 9 IN X 1 IN DEEP SPALL WITH EXPOSED REBAR IN BOTTOM OF GIRDER 2, SPAN 1 AT BENT 1, SIMILAR SPALLS GIRDERS 3 AND 4



24 IN LONG X 1/4 IN VERTICAL CRACK IN END OF GIRDER 1 AT BENT 1, SPAN 1 SIDE, SIMILAR CRACKS AT ENDS OF GIRDERS AT OTHER BENTS

BRIDGE MAINTENANCE UNIT
DATA ON EXISTING STRUCTURE

RUN DATE 06/21/2007

COUNTY :	DIV :	DIST :	STRUCTURE NUMBER :	LENGTH :
CUMBERLAND	6	2	250154	221 FEET
ROUTE CARRIED :		FEATURE INTERSECTED :		
SR1815		I95		
LOCATED :		BRIDGE NAME :		
1.0 MI. W. JCT. SR1005				
FUNC. CLASS :	SYST.ON :	SYST.UNDER :	ADT & YR :	RAIL TYPE :
07	FA	FA	2800 2004	LT 213 RT 213
BUILT :	BY :	PROJ :	FED.AID PROJ :	DESIGN LOAD :
1956	SHPWC	3437	I-703(6)	HS 15
REHAB :	BY :	PROJ :	ALIGNMENT :	SKEW :
0			TAN.	110
		LANES :		
		ON 2		UNDER 4
NAVIGATION :		HT. CRN. TO BED :		WATER DEPTH :
VC	0 FT	HC	0 FT	0 FT
SUPERSTRUCTURE : RC FLOOR ON RC DECK GIRDERS				
SUBSTRUCTURE : E.BTS&INT.BTS:RC CAPS/RC PILES				
SPANS : 1@53';2@57'6';1@53'				
BEAMS OR GIRDERS : 4LINES 18 RC GIRDERS @8'CTS.				
FLOOR :	ENCROACHMENT :	DECK (OUT TO OUT) :		
7.25 RC/NO AWS		31.5 FT		
CLEAR ROADWAY :	BETWEEN RAILS :	SIDEWALK OR CURB :		
28.1 FT	28.1 FT	LT	0.1 FT	RT 0.1 FT
VERT.CL.OVER :	VERT.CL.UNDER :	HOR.CL.UNDER :		
99 FT 99 IN	14 FT 08 IN	47.4 FT		
INV.RTG. :	OPE.RTG. :	CONTR.MEMBER :	POSTED :	
HS-21	HS-35	BEAM INT.	SV 0	TTST 0 DATE
SYSTEM :		GREEN LINE ROUTE :		
Primary S.R. Route		Y		
2ND OPENING :	3RD OPENING :	4TH OPENING :	5TH OPENING :	
14 FT 09 IN I-95 NBL				
REMARKS :				

Structure Data Worksheet

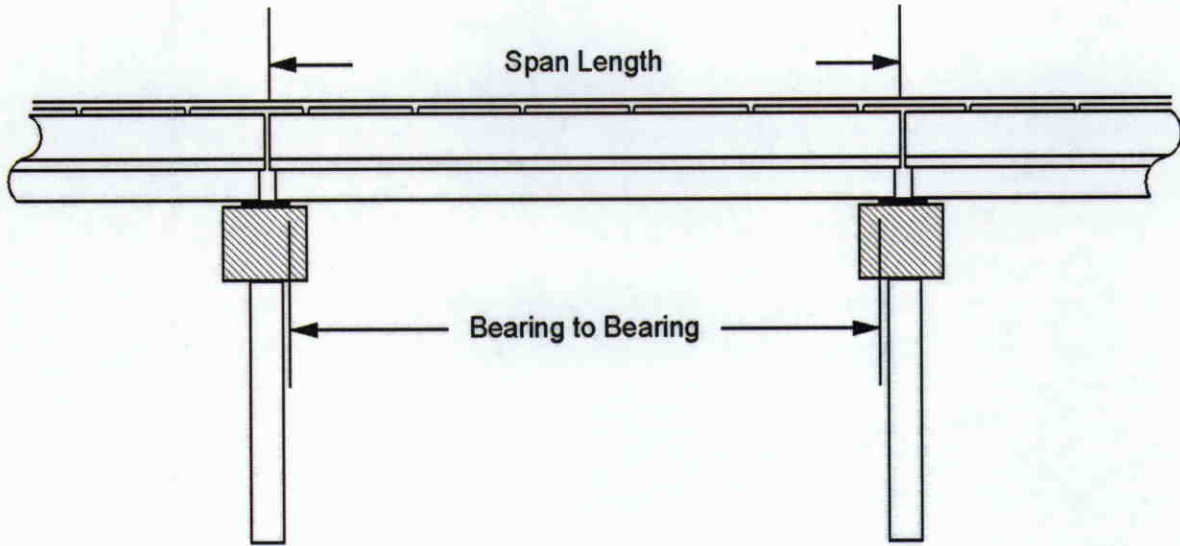
Spans

County: CUMBERLAND

Structure No: 250154

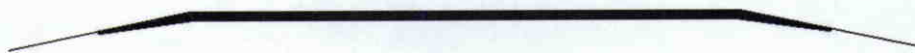
Date: 00/11/2007

Inspected By: JEM



Span No	Span Length	Bearing to Bearing	Comments
1	53.0		
2	57.5		
3	57.5		
4	53.0		

Bridge Inspection Field Sketch

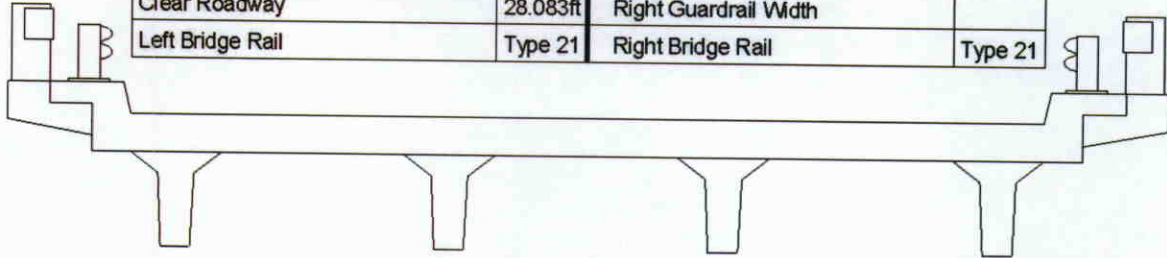


Roadway	18ft Wide	2 Paved Lanes	Looking East
Left Shoulder	4ft Wide		4ft Unpaved
Right Shoulder	4ft Wide		4ft Unpaved
Left Guardrail			
Right Guardrail			

Title		Description	
Approach		Approach Roadway	
Bridge No: 250154	Drawn By: dlp	Date: 06/15/2005	File Name: S0098000168

Bridge Inspection Field Sketch

Deck Width/Out to Out	31.5ft	Wearing Surface	
Between Rails	28.083ft	Median Width	
Curb Height	0.833ft	Median Height	
Top Rail to Deck/Wearing Surface	2.542ft	Left Guardrail Width	
Clear Roadway	28.083ft	Right Guardrail Width	
Left Bridge Rail	Type 21	Right Bridge Rail	Type 21



Measurements for Span #	1		
Deck Thickness	0.604	Left Overhang	3.75
Top of Rail to Bottom of Beam	7.312	Right Overhang	3.75

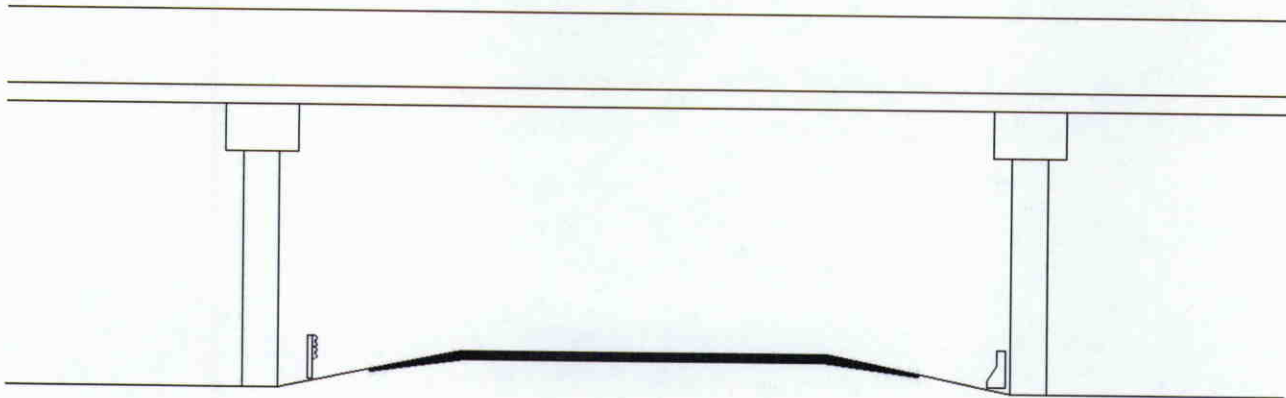
Beam No	Beam Type	Spacing	Comments
1	RC Deck Girder	8 ft.	
2	RC Deck Girder	8 ft.	
3	RC Deck Girder	8 ft.	
4	RC Deck Girder		

R.C. Girders are 1.5 ft. wide x 4.17 ft. high.

Spans 1 thru 4 are same dimensions.

Title Superstructure		Description Span1	
Bridge No: 250154	Drawn By: dlp	Date: 06/15/2005	File Name: S0098000169

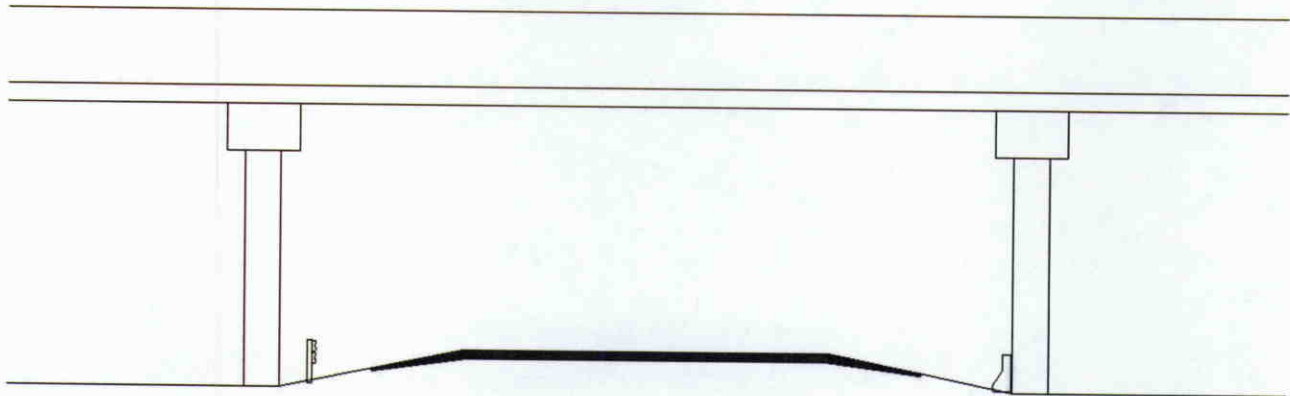
Bridge Inspection Field Sketch



Roadway	24ft Wide	2 Paved Lanes	All Lanes SouthBound
Left Shoulder	12.833ft Wide		Guardrail: 12.833ft from road
Right Shoulder	10.583ft Wide		Guardrail: 10.583ft from road
Left Turn Lane(s)			
Right Turn Lane(s)			
Distance to Left Bent	17ft		
Distance to Left Toe of Slope			
Distance to Right Bent	12ft		
Distance to Right Toe of Slope			
Max. Min. Vertical Clearance	14.75ft	10ft from Right edge of road	at beam # 1
Minimum Vertical Clearance	14.667ft	0ft from Center of road	at beam # 1

Title		Description	
Underclearance # 1		Span 2	
Bridge No: 250154	Drawn By: dlp	Date: 06/15/2005	File Name: S0098000171

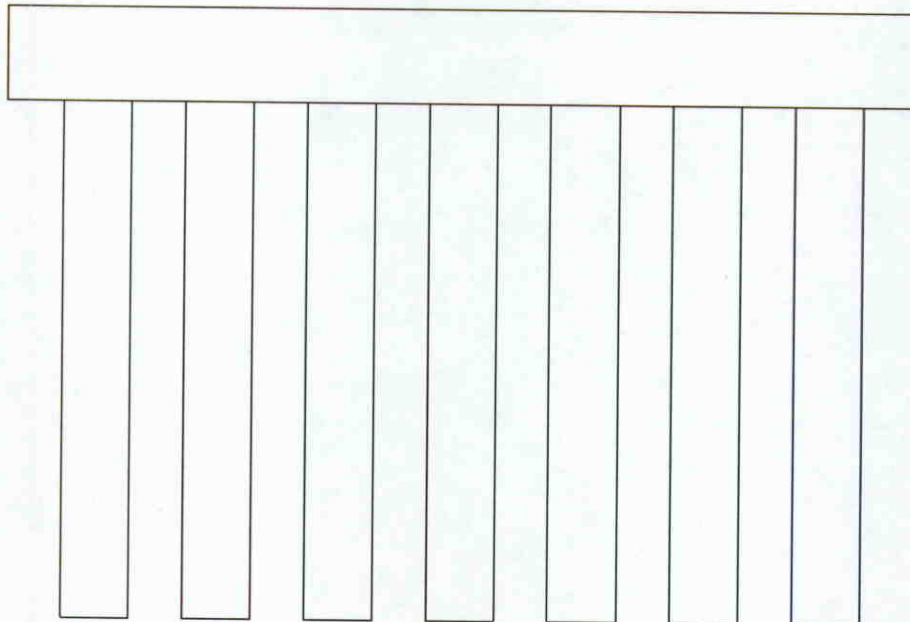
Bridge Inspection Field Sketch



Roadway	24ft Wide	2 Paved Lanes	All Lanes NorthBound
Left Shoulder	12.5ft Wide		Guardrail: 12.5ft from road
Right Shoulder	10ft Wide		Guardrail: 10ft from road
Left Turn Lane(s)			
Right Turn Lane(s)			
Distance to Left Bent	17.333ft		
Distance to Left Toe of Slope			
Distance to Right Bent	11.417ft		
Distance to Right Toe of Slope			
Max. Min. Vertical Clearance	14.75ft	10ft from Right edge of road	at beam # 1
Minimum Vertical Clearance	14.75ft	0ft from Center of road	at beam # 1

Title		Description	
Underclearance # 2		Span 3	
Bridge No: 250154	Drawn By: dlp	Date: 06/15/2005	File Name: S0098000172

Bridge Inspection Field Sketch



Bent #	1		
Cap - Pre-Cast			
Cap Size	33ft Long	3.5ft Wide	2.5ft High
Left Overhang	1.83ft	Lt Cap/Beam Overhang	4.5ft
Right Overhang	1.83ft	Rt Cap/Beam Overhang	4.5ft

Pile #	Material	Pile Type	Spacing	Length	Width/Diam.	Height	Orientation
1	Prestressed Concrete	Pile Bent	5		20 in		Vertical
2	Prestressed Concrete	Pile Bent	5		20 in		Vertical
3	Prestressed Concrete	Pile Bent	5		20 in		Vertical
4	Prestressed Concrete	Pile Bent	5		20 in		Vertical
5	Prestressed Concrete	Pile Bent	5		20 in		Vertical
6	Prestressed Concrete	Pile Bent	5		20 in		Vertical
7	Prestressed Concrete	Pile Bent			20 in		Vertical

Title Pile Diagram	Description Prestressed Concrete Piles
Bridge No: 250154	Drawn By: CLS
Date: 03/12/2007	File Name: S0234001109



LOOKING EAST



TYPICAL BRIDGE RAIL, SOUTH SIDE SHOWN



GUARDRAIL ANCHORAGE TO BRIDGE CURB



LOOKING NORTH



LOOKING SOUTH



LOOKING WEST



TYPICAL BEARING AT BENT, BENT 3, GIRDER 1 SHOWN



TYPICAL SLOPE PROTECTION, END BENT 2 SHOWN



TYPICAL BENT, BENT 2 SHOWN



TYPICAL UNDERDECK, SPAN 2 SHOWN



TYPICAL END BENT, END BENT 1 SHOWN



NORTH PROFILE LOOKING SOUTH



SOUTH PROFILE LOOKING NORTH



VERTICAL CLEARANCE SIGNS



DELINEATORS AT BENTS