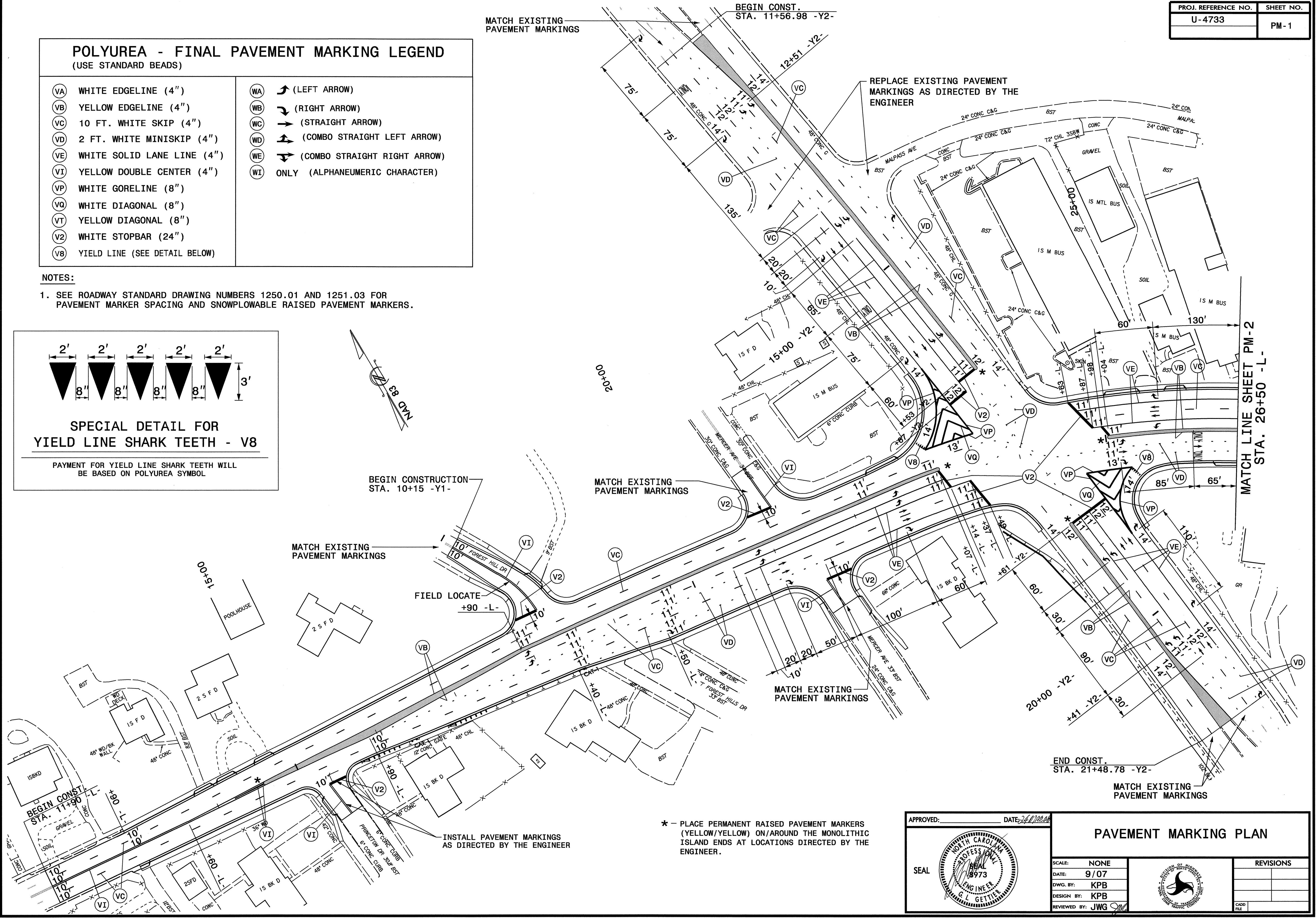
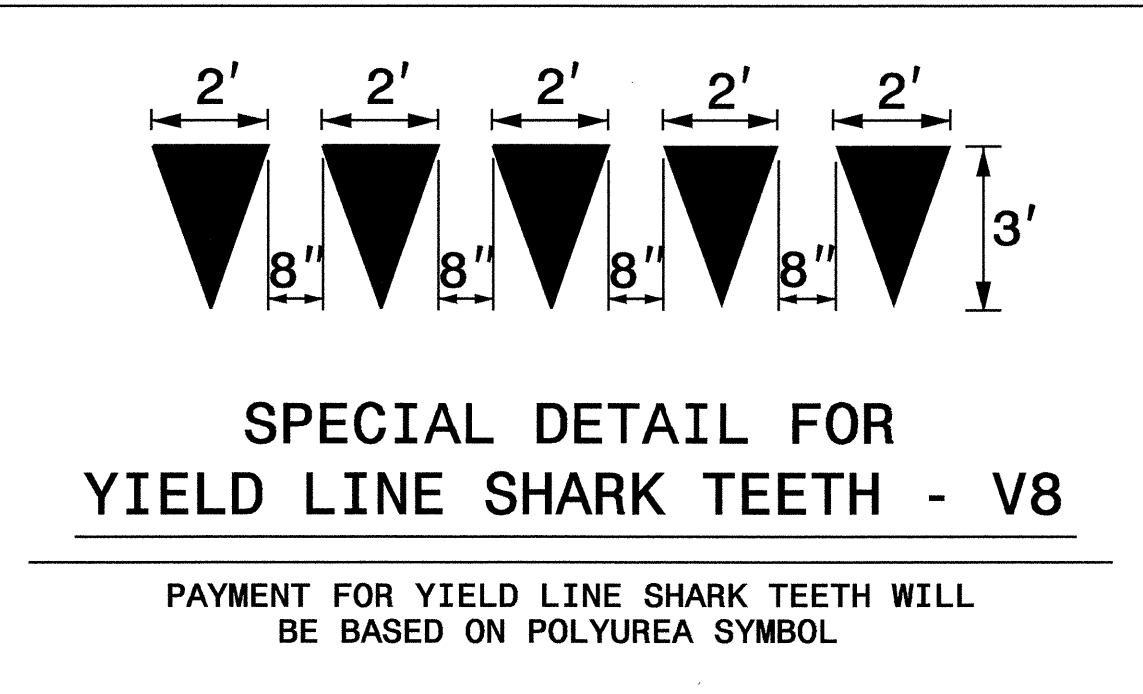


POLYUREA - FINAL PAVEMENT MARKING LEGEND (USE STANDARD BEADS)

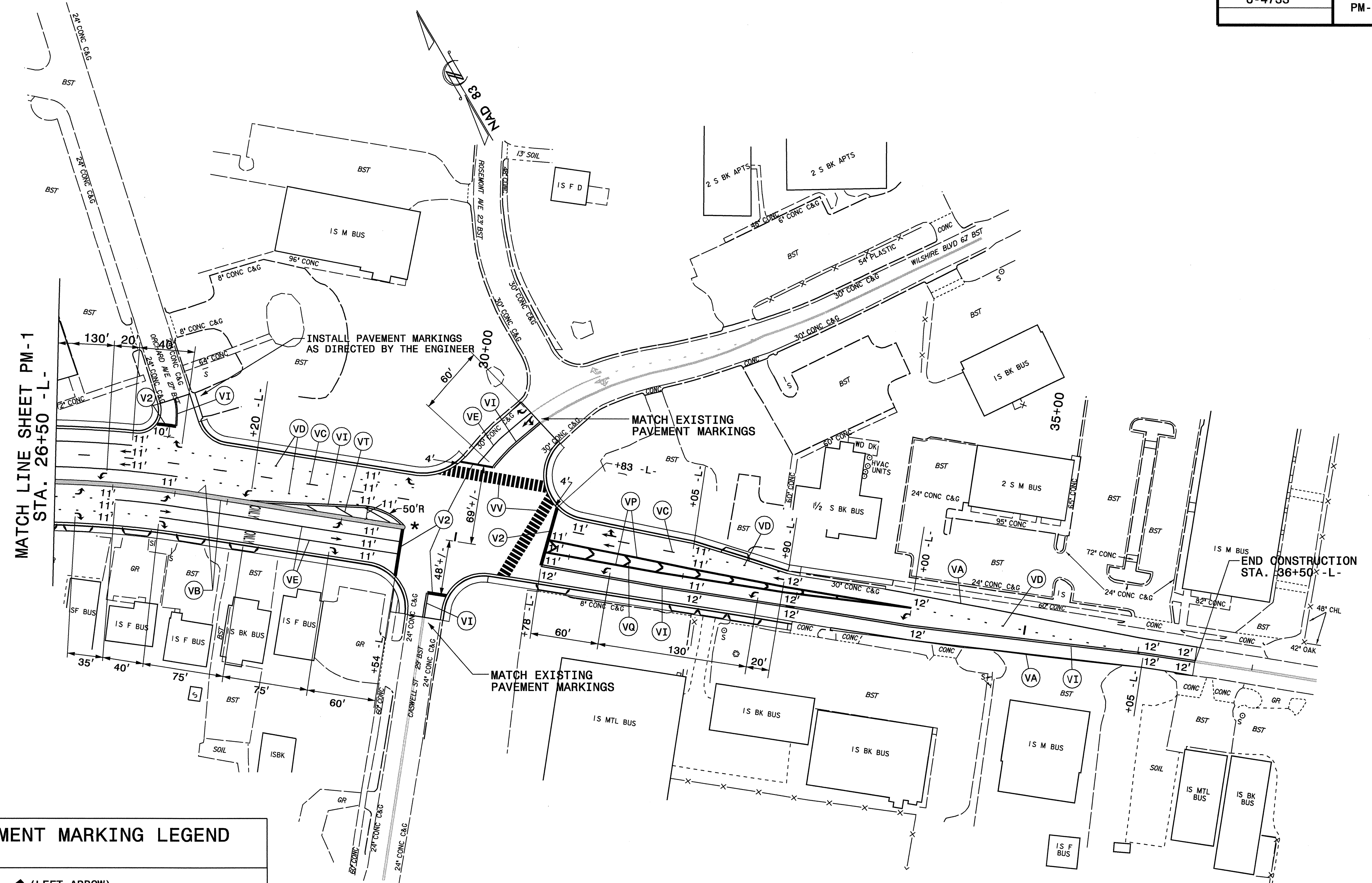
(VA) WHITE EDGELINE (4")	(WA) (LEFT ARROW)
(VB) YELLOW EDGELINE (4")	(WB) (RIGHT ARROW)
(VC) 10 FT. WHITE SKIP (4")	(WC) (STRAIGHT ARROW)
(VD) 2 FT. WHITE MINISKIP (4")	(WD) (COMBO STRAIGHT LEFT ARROW)
(VE) WHITE SOLID LANE LINE (4")	(WE) (COMBO STRAIGHT RIGHT ARROW)
(VI) YELLOW DOUBLE CENTER (4")	(WI) ONLY (ALPHANEUMERIC CHARACTER)
(VP) WHITE GORELINE (8")	
(VQ) WHITE DIAGONAL (8")	
(VT) YELLOW DIAGONAL (8")	
(V2) WHITE STOPBAR (24")	
(V8) YIELD LINE (SEE DETAIL BELOW)	

NOTES:
1. SEE ROADWAY STANDARD DRAWING NUMBERS 1250.01 AND 1251.03 FOR PAVEMENT MARKER SPACING AND SNOWPLOWABLE RAISED PAVEMENT MARKERS.



25-MAR-2008 11:27
C:\dot\dfs\proj\4733\traffic\trafficcontrol\top\kpb design\U-4733-rc.pmp-pm-1.dgn
KBR\cadwell AT WZTC23745

APPROVED: _____ DATE: 2/2/08	PAVEMENT MARKING PLAN	
	SCALE: NONE	
	DATE: 9/07	
	DWG. BY: KPB	
	DESIGN BY: KPB	
REVIEWED BY: JWG	REVISIONS	



POLYUREA - FINAL PAVEMENT MARKING LEGEND

(USE STANDARD BEADS)

(VA) WHITE EDGELINE (4")	(WA) ↶ (LEFT ARROW)
(VB) YELLOW EDGELINE (4")	(WB) ↷ (RIGHT ARROW)
(VC) 10 FT. WHITE SKIP (4")	(WC) → (STRAIGHT ARROW)
(VD) 2 FT. WHITE MINISKIP (4")	(WD) ↶↷ (COMBO STRAIGHT LEFT ARROW)
(VE) WHITE SOLID LANE LINE (4")	(WE) ↷↶ (COMBO STRAIGHT RIGHT ARROW)
(VI) YELLOW DOUBLE CENTER (4")	(WI) ONLY (ALPHANEUMERIC CHARACTER)
(VP) WHITE GORELINE (8")	
(VQ) WHITE DIAGONAL (8")	
(VT) YELLOW DIAGONAL (8")	
(VV) WHITE CROSSWALK (24")	
(V2) WHITE STOPBAR (24")	

NOTES:

- SEE ROADWAY STANDARD DRAWING NUMBERS 1250.01 AND 1251.03 FOR PAVEMENT MARKER SPACING AND SNOWPLOWABLE RAISED PAVEMENT MARKERS.

* - PLACE PERMANENT RAISED PAVEMENT MARKERS (YELLOW/YELLOW) ON/AROUND THE MONOLITHIC ISLAND ENDS AT LOCATIONS DIRECTED BY THE ENGINEER.

APPROVED: _____	DATE: 12/11/06	PAVEMENT MARKING PLAN	
		DATE: 9/07	
DWG. BY: KPB			
DESIGN BY: KPB			
REVIEWED BY: JWG			

19-MAR-2008 09:57
 \\dot\cbe\at\wz\c23745
 kdr\cadwell, A.
 I:\Projects\4733\TrafficControl\top\kpb design\U-4733_fc.pmp\pm-2r1.dgn