

09/08/09

T.I.P. NO.	SHEET NO.
B-4197	UO-1

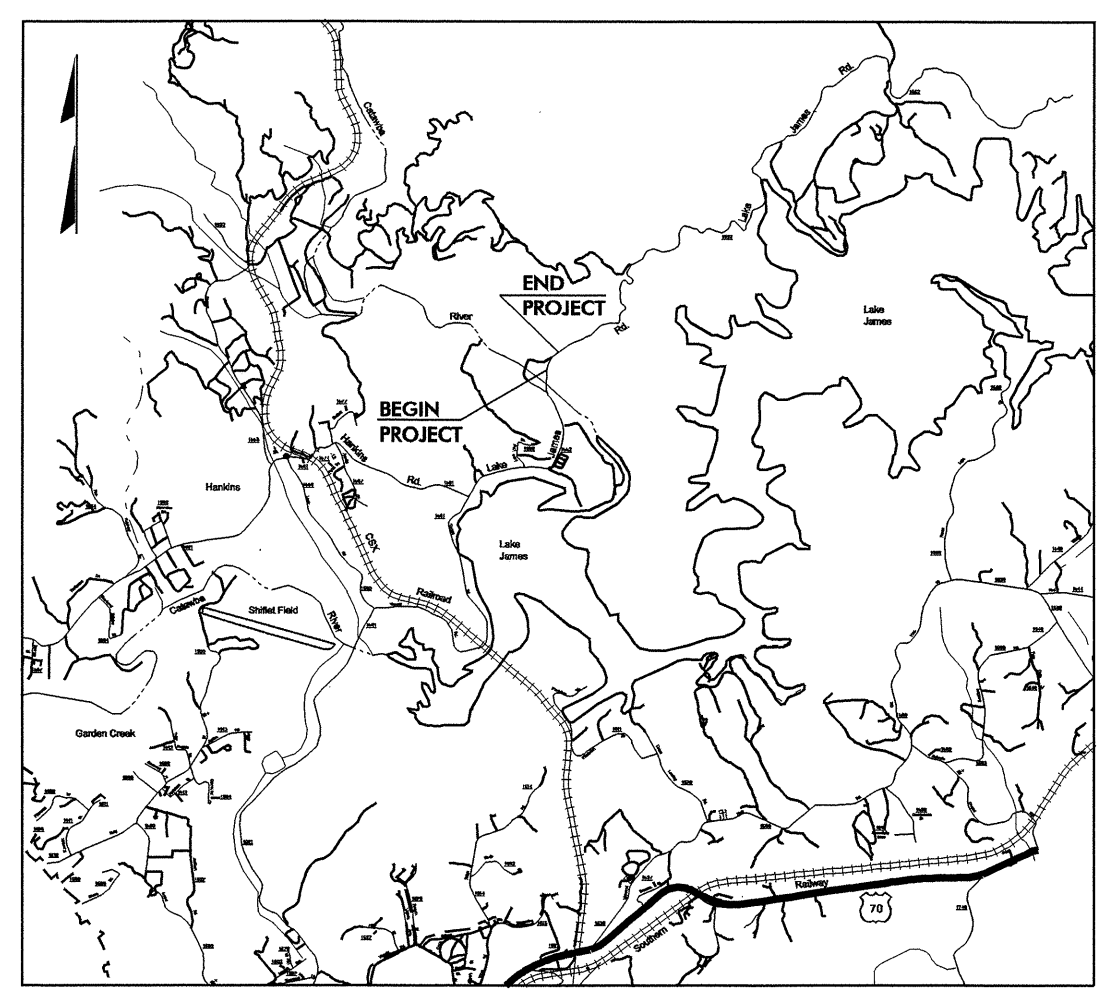
STATE OF NORTH CAROLINA
DIVISION OF HIGHWAYS

UTILITY BY OTHERS PLANS
McDOWELL COUNTY

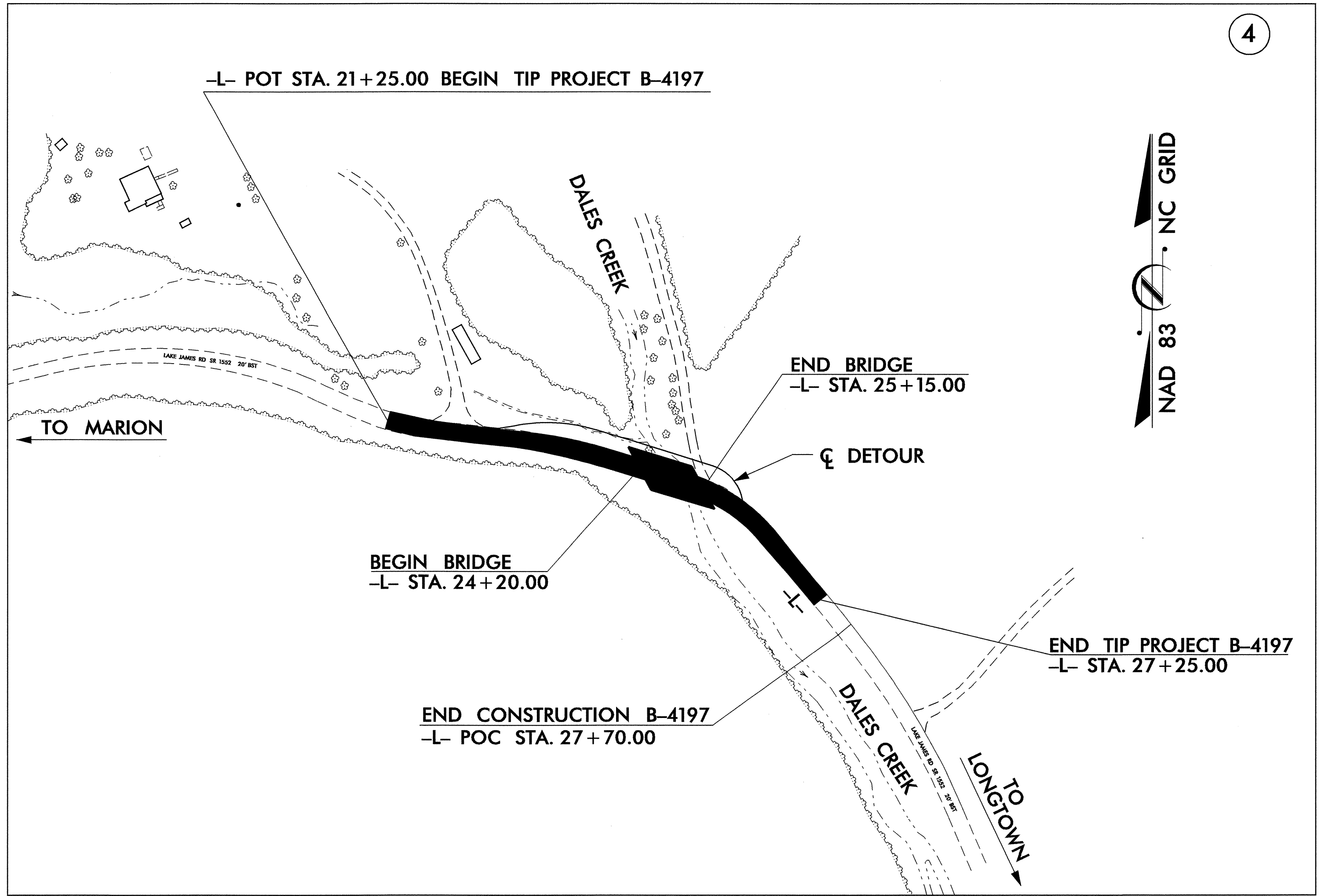
LOCATION: BRIDGE No. 73 OVER DALES CREEK ON SR 1552 LAKE JAMES ROAD
TYPE OF WORK: UTILITIES BY OTHERS

TIP PROJECT: B-4197

CONTRACT C201806

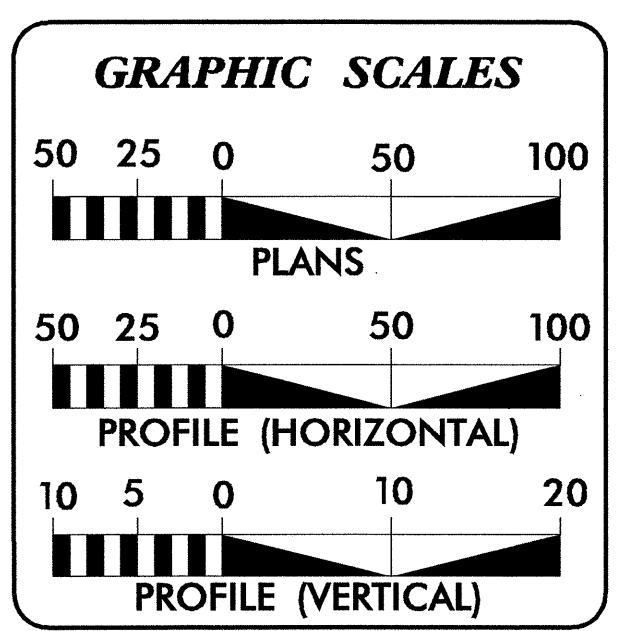


VICINITY MAP



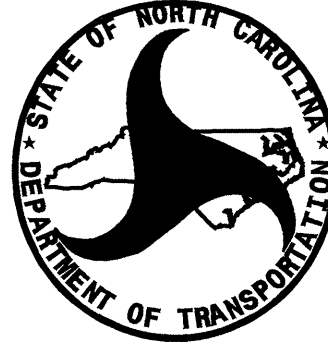
4

NAD 83
NC GRID



INDEX OF SHEETS	
SHEET NO.	DESCRIPTION
UO-1	TITLE SHEET
UO-2	UTILITY BY OTHERS PLAN SHEET

UTILITY OWNERS ON PROJECT
(1) DUKE ENERGY - POWER DISTRIBUTION
(2) VERIZON SOUTH - TELEPHONE



PREPARED IN THE OFFICE OF:
DIVISION OF HIGHWAYS
PROJECT SERVICES
UTILITY SECTION

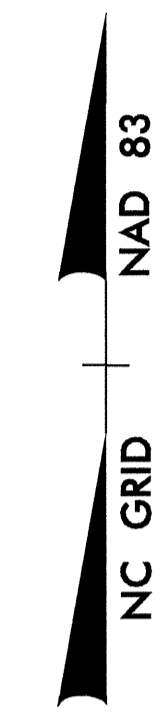
1591 MAIL SERVICES CENTER
RALEIGH NC 27699-1591
PHONE (919) 250-4128
FAX (919) 250-4119

Roger Worthington, P.E. UTILITIES SECTION ENGINEER
R. B. WILKINS, P.E. UTILITIES SQUAD LEADER PROJECT ENGINEER
JOHN NIGRO, P.E. UTILITIES PROJECT DESIGNER

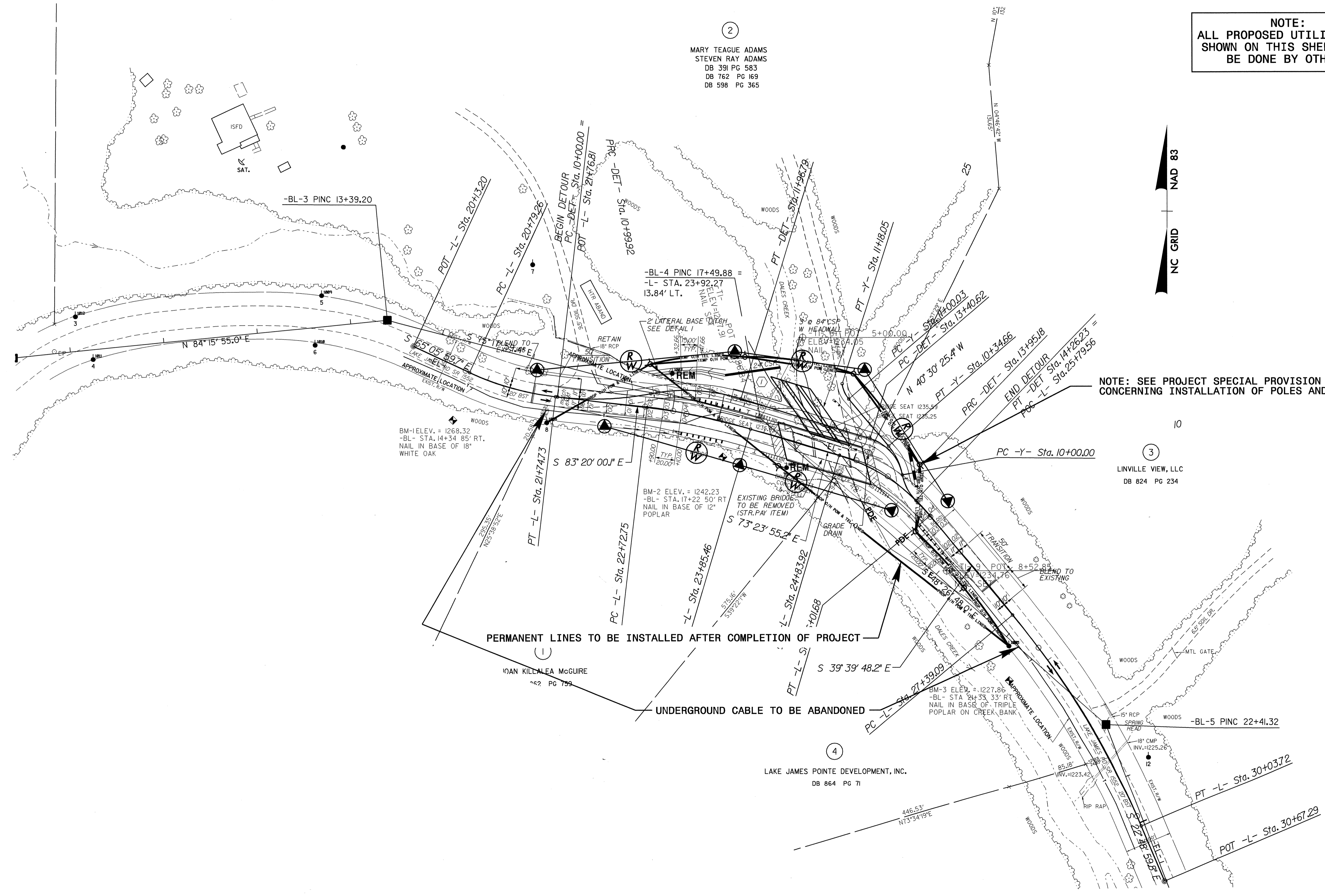
29-NOV-2007 08:20
C:\UTILITIES\PROJECTS\CD\proj\b4197_ut_title_uo1_psh.dgn
USER: JNIGRO

UTILITIES BY OTHERS

NOTE:
ALL PROPOSED UTILITY WORK
SHOWN ON THIS SHEET WILL
BE DONE BY OTHERS



NOTE: SEE PROJECT SPECIAL PROVISION UTILITIES
CONCERNING INSTALLATION OF POLES AND LINES



2
MARY TEAGUE ADAMS
STEVEN RAY ADAMS
DB 391 PG 583
DB 762 PG 169
DB 598 PG 365

BM-1 ELEV. = 1268.32
-BL- STA. 14+34 85' RT.
NAIL IN BASE OF 18"
WHITE OAK

BM-2 ELEV. = 1242.23
-BL- STA. 17+22 50' RT
NAIL IN BASE OF 12"
POPLAR

BM-3 ELEV. = 1227.86
-BL- STA. 24+33 33' RT
NAIL IN BASE OF TRIPLE
POPLAR ON CREEK BANK

IOAN KILLALEA MCGUIRE
DB 62 PG 753

LAKE JAMES POINTE DEVELOPMENT, INC.
DB 864 PG 71

10
3
LINVILLE VIEW, LLC
DB 824 PG 234

-BL-5 PINC 22+41.32

5/14/99

29-NOV-2007 08:22
r:\utilities\psh\proj\b4197_ut_(4)_uo2_psh.dgn