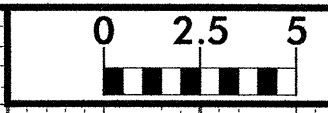


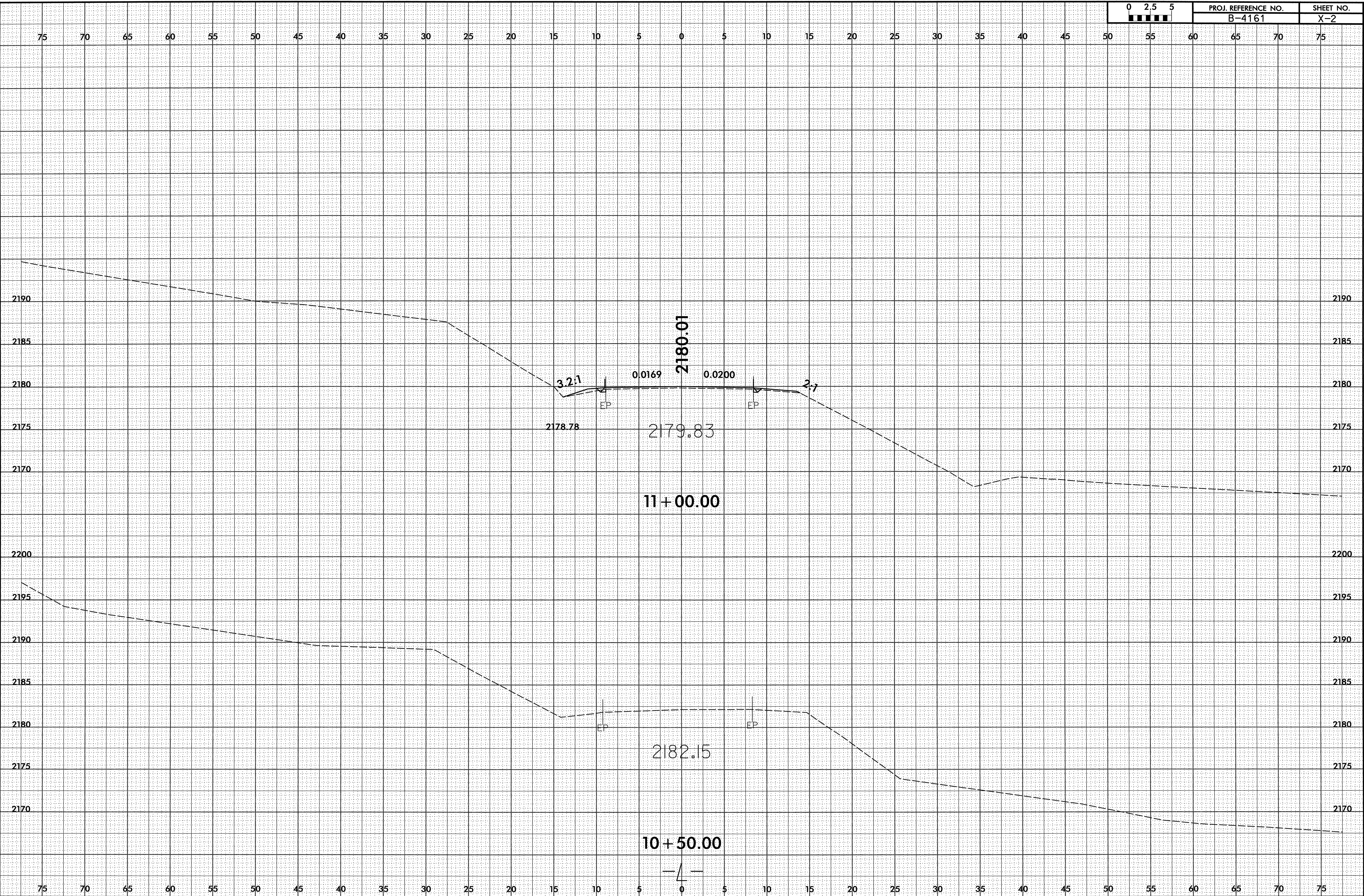




9/23/99



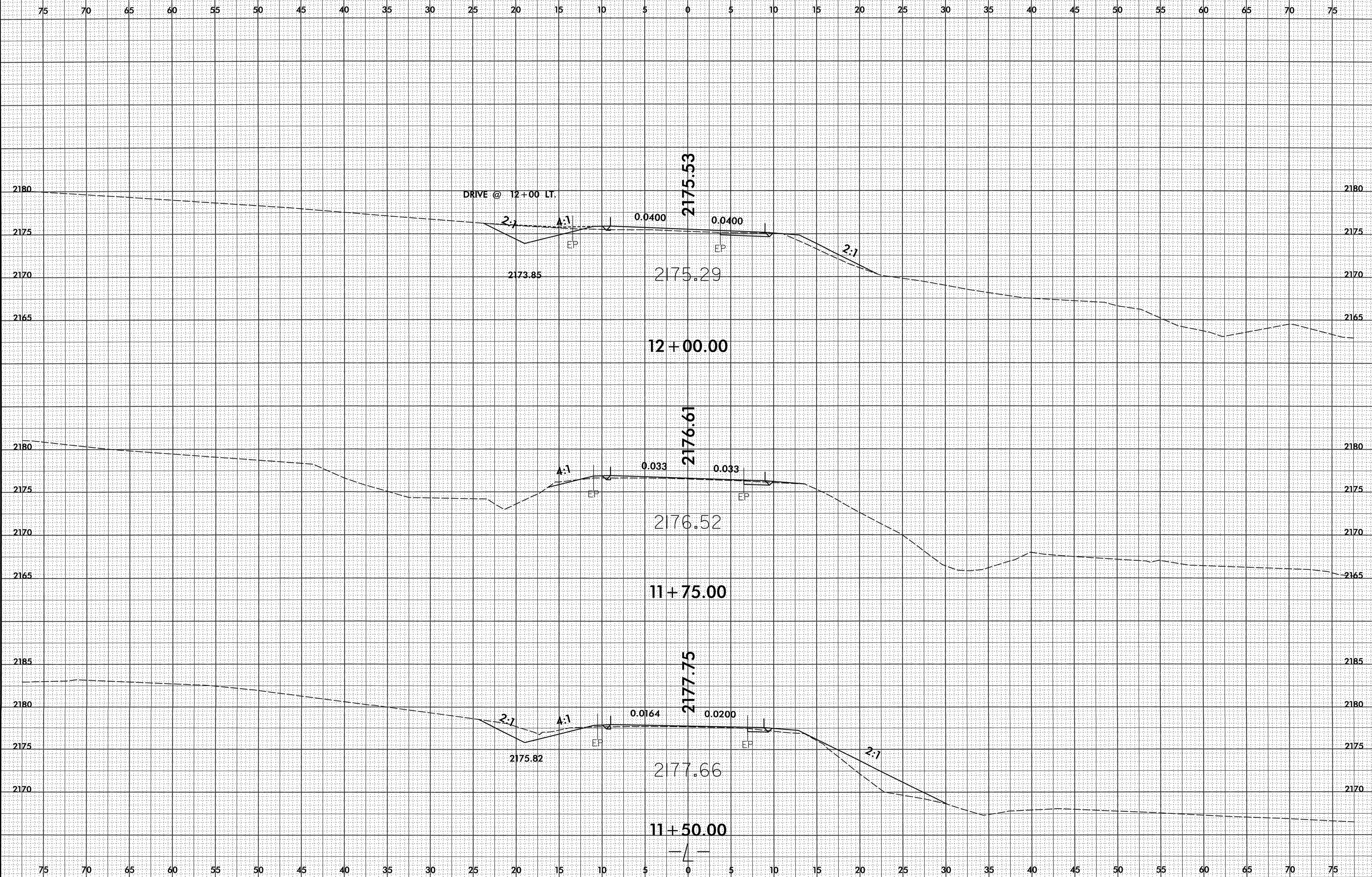
PROJ. REFERENCE NO.	SHEET NO.
B-4161	X-2



04/08/2008  
T:\2008\proj\B4161\RDY\_xpl.L.dgn

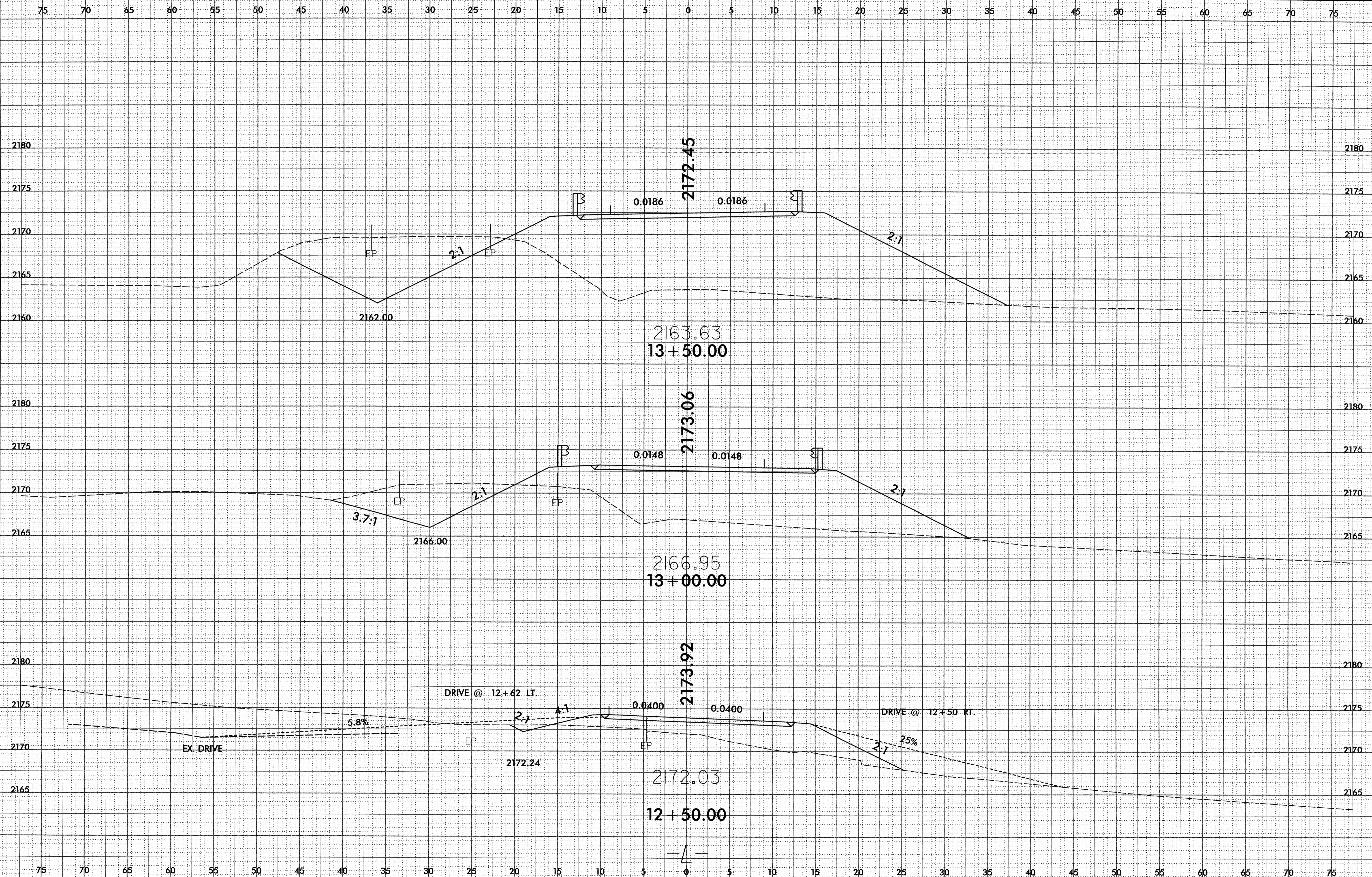


8/23/99

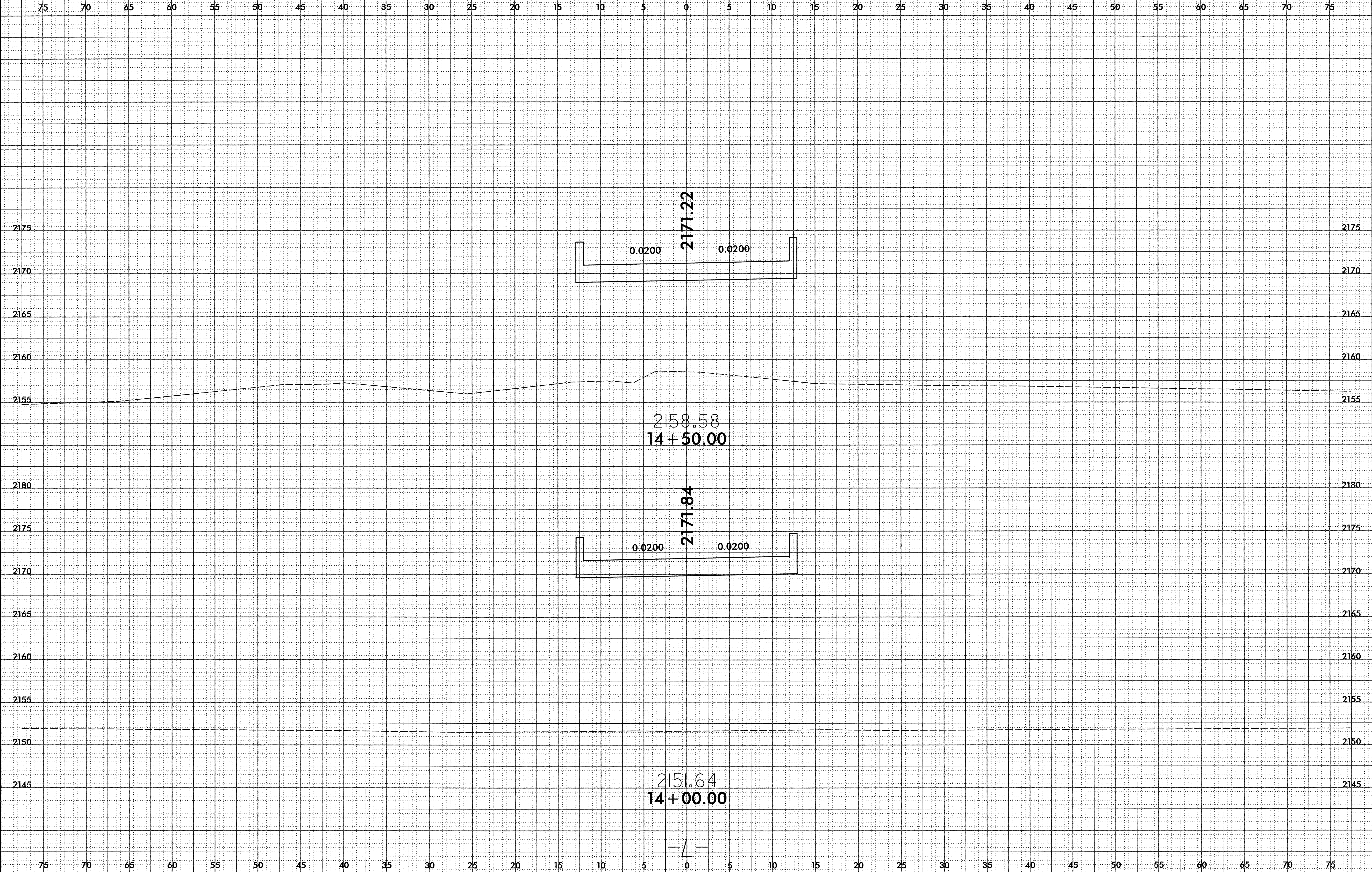
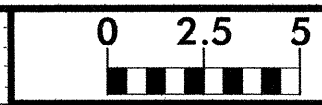


04/08/2008  
T:\XCP\gwg\B4161\Fdy\_xp1.L.dgn

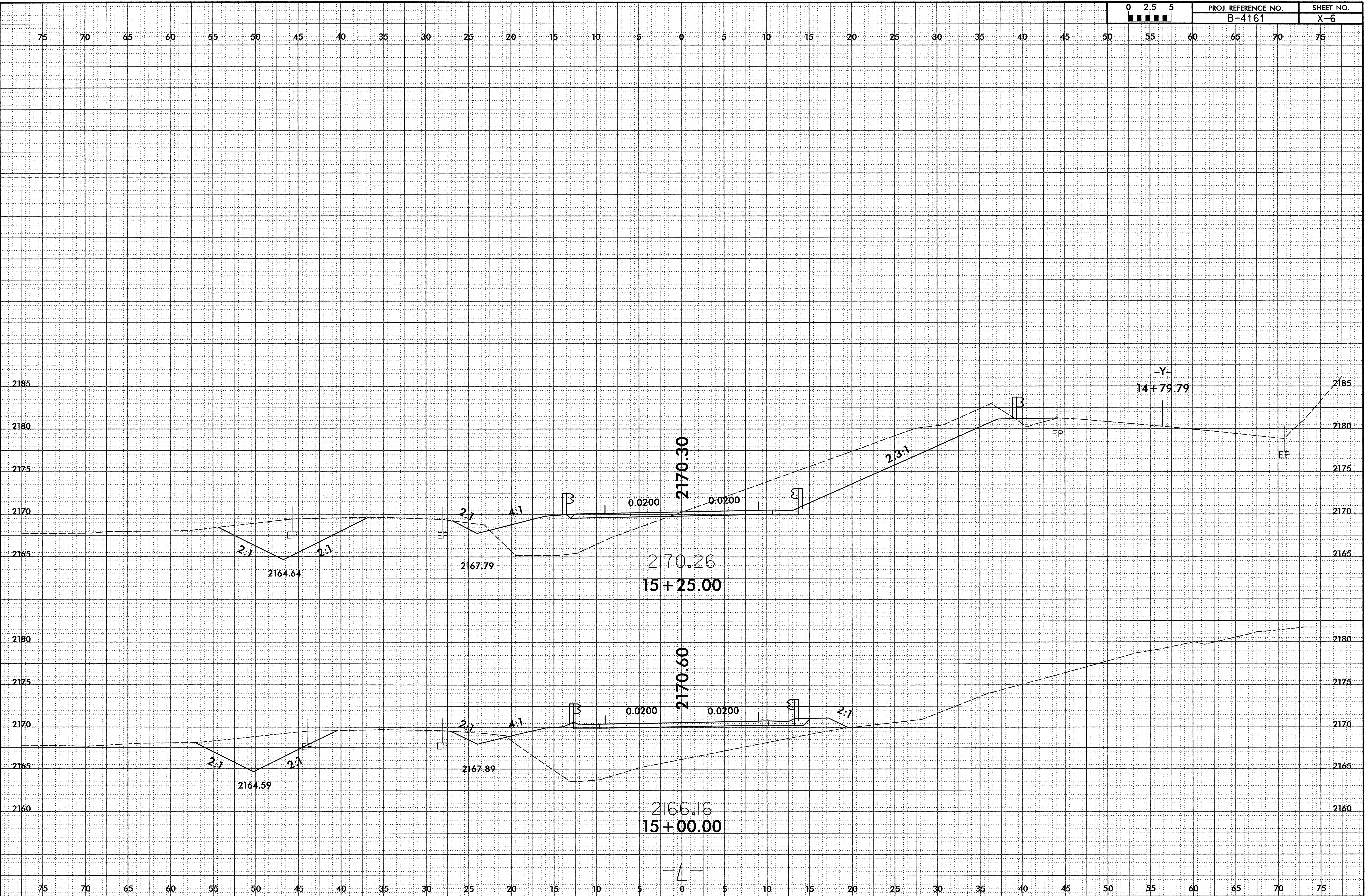




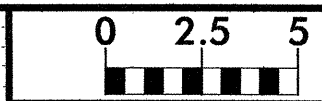




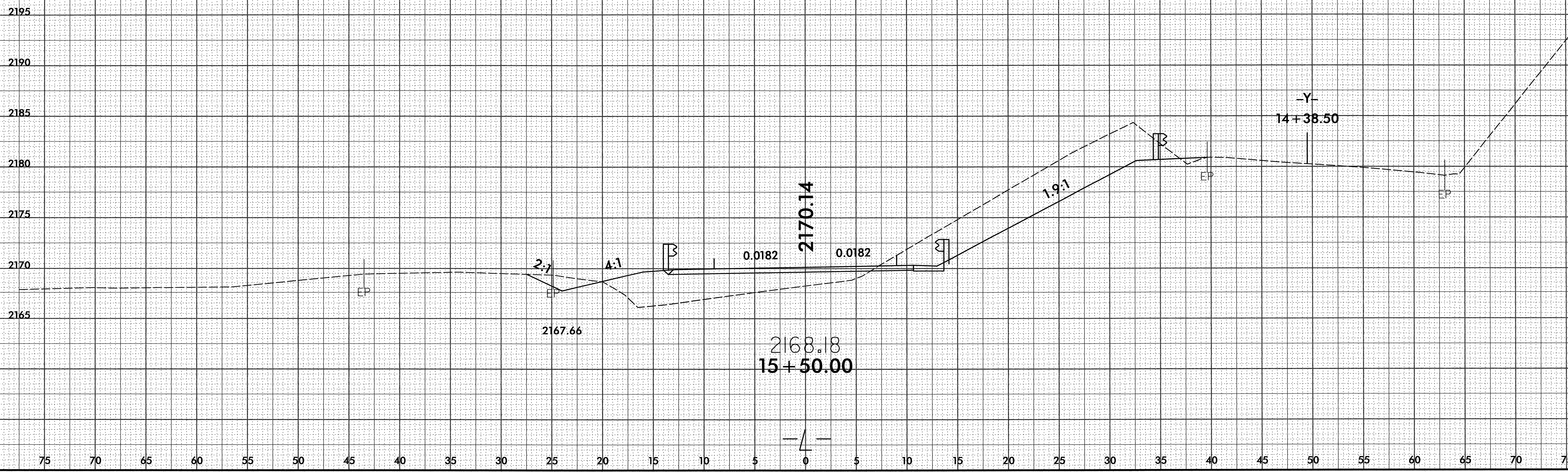
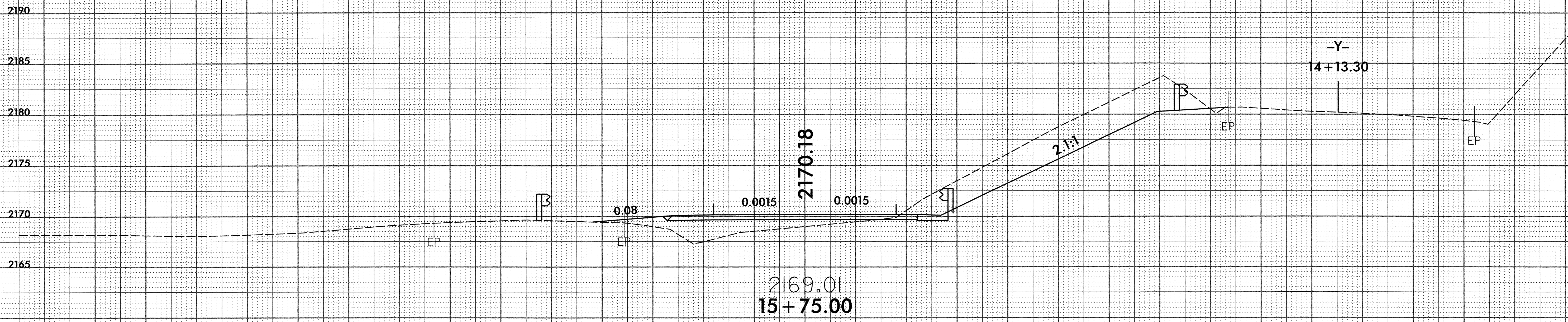






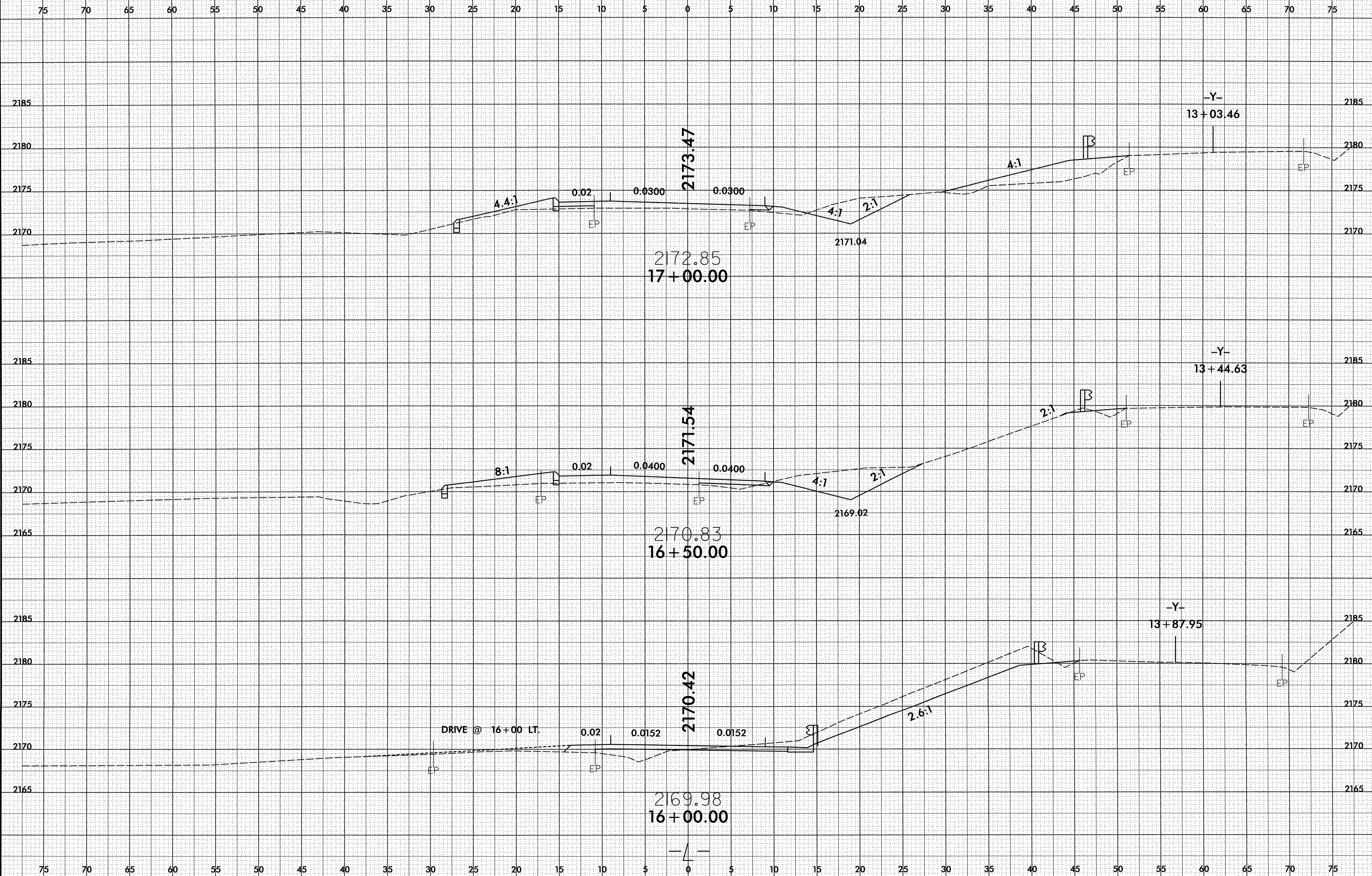


75 70 65 60 55 50 45 40 35 30 25 20 15 10 5 0 5 10 15 20 25 30 35 40 45 50 55 60 65 70 75



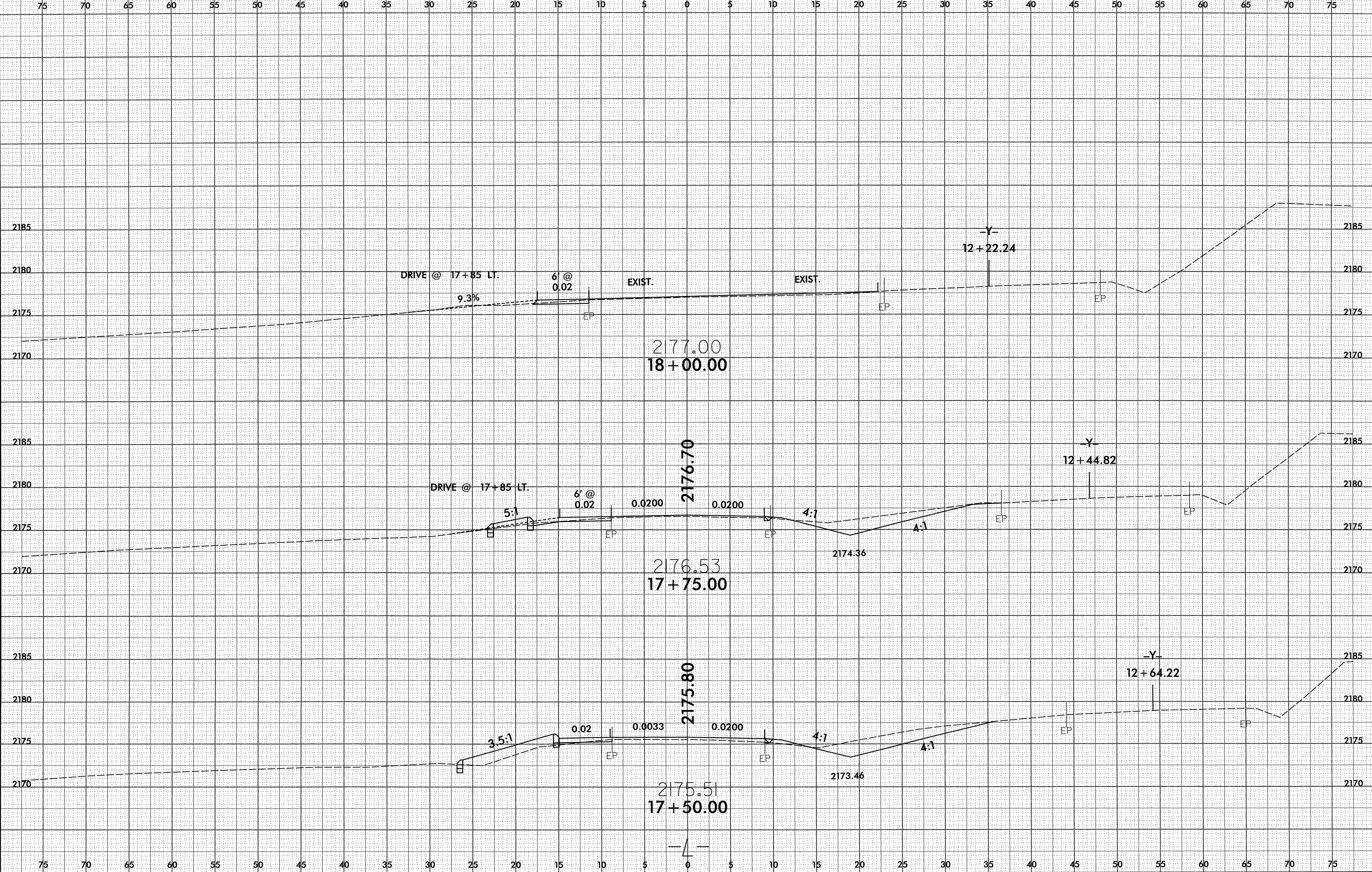
75 70 65 60 55 50 45 40 35 30 25 20 15 10 5 0 5 10 15 20 25 30 35 40 45 50 55 60 65 70 75





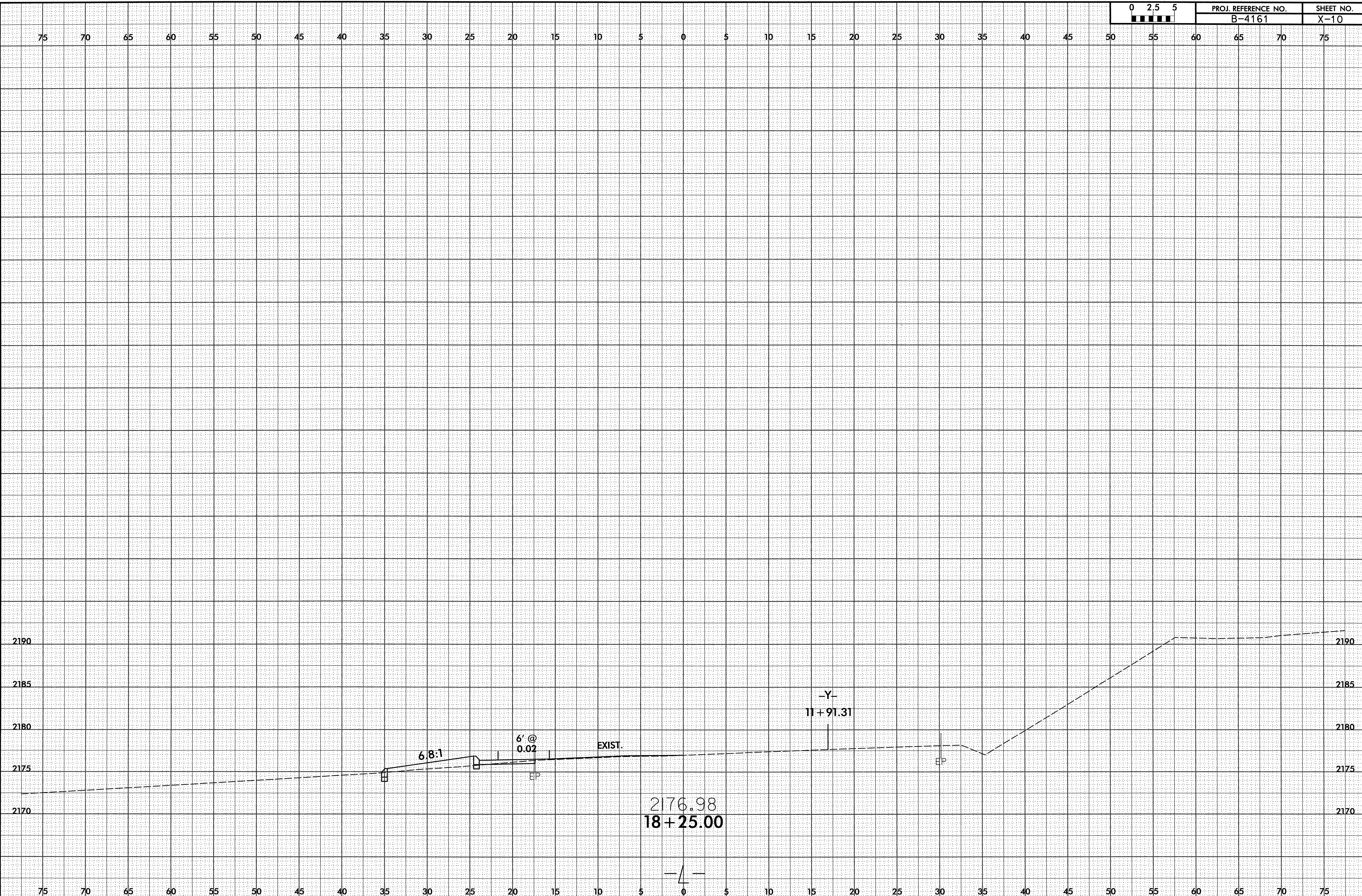
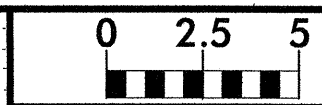


8/23/99

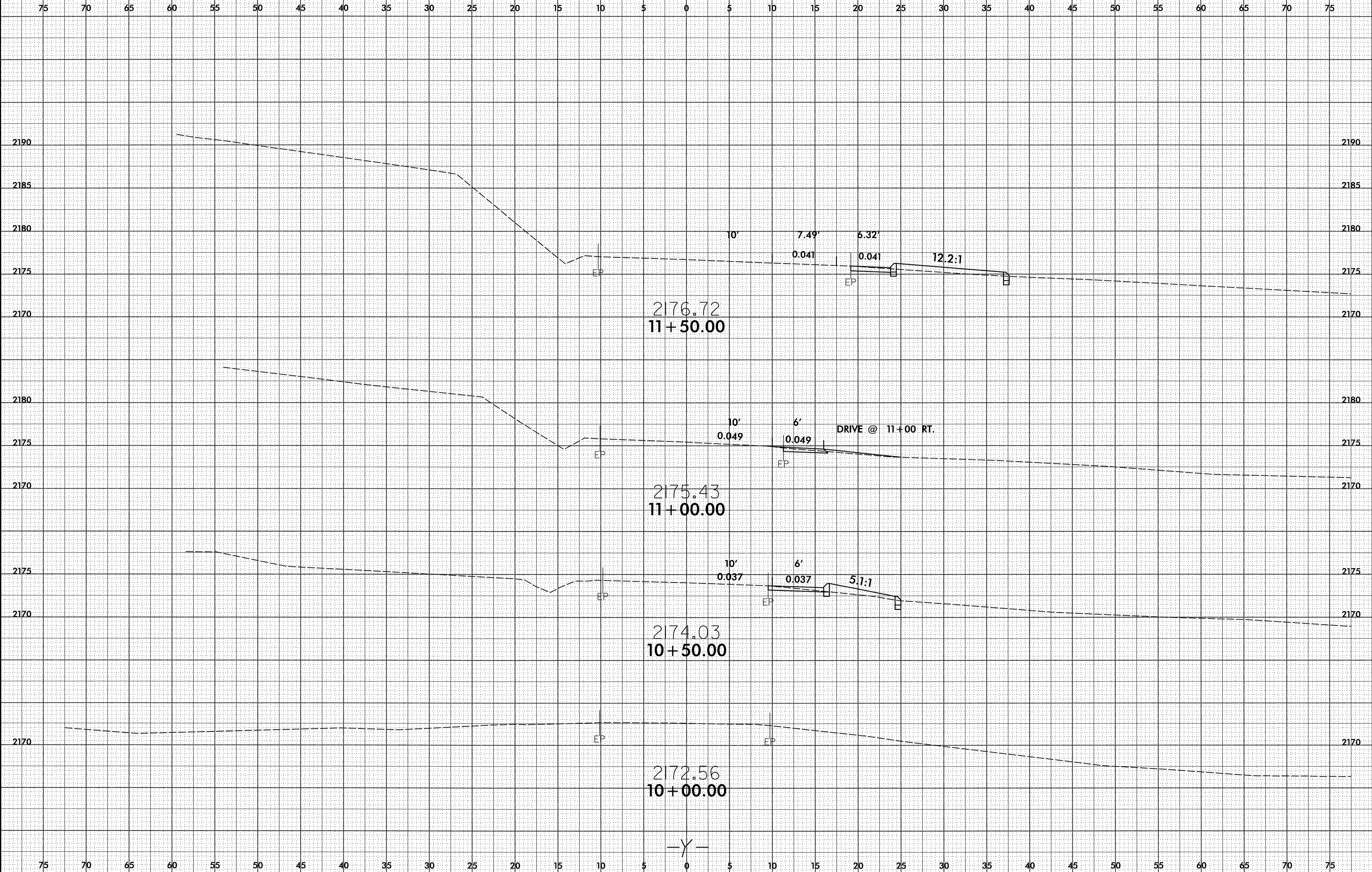
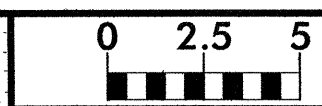


04/08/2008 T:\c08\84161\sec\B4161\Fduj\_xpl.dgn









-Y-