

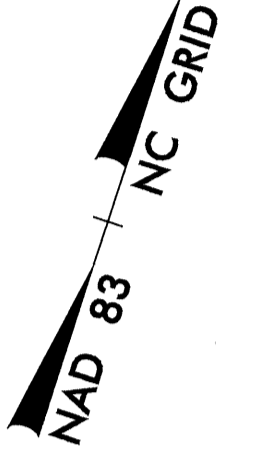
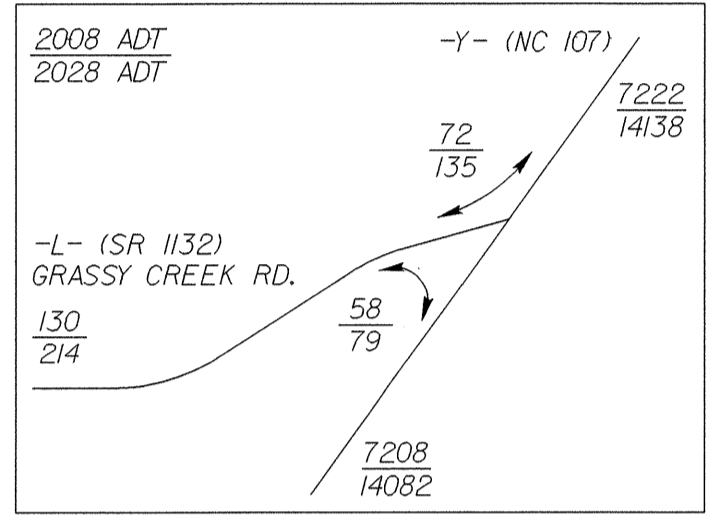
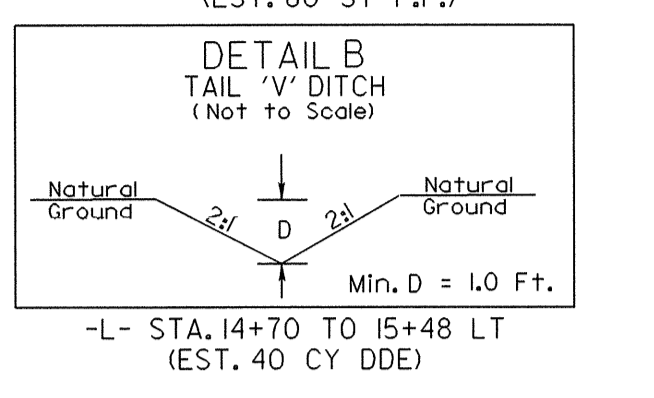
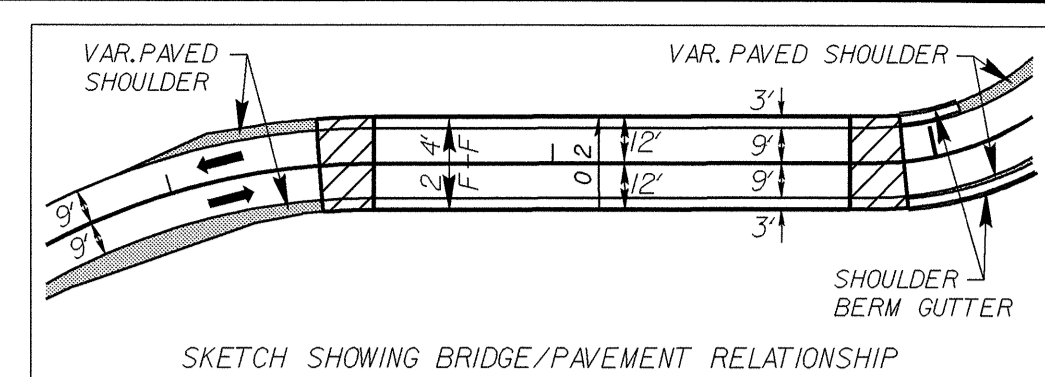
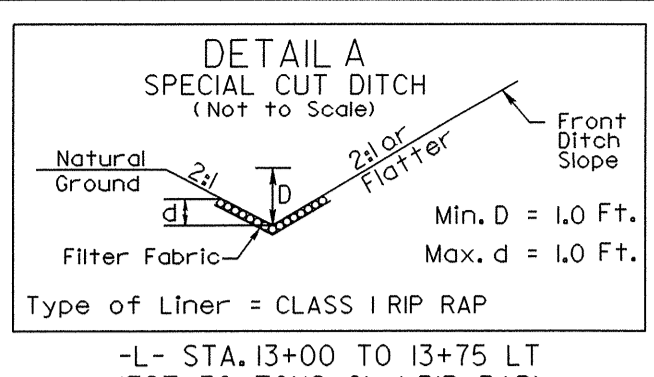
UTILITIES BY OTHERS

NOTE:
ALL PROPOSED UTILITY WORK SHOWN ON THIS SHEET WILL BE DONE BY OTHERS

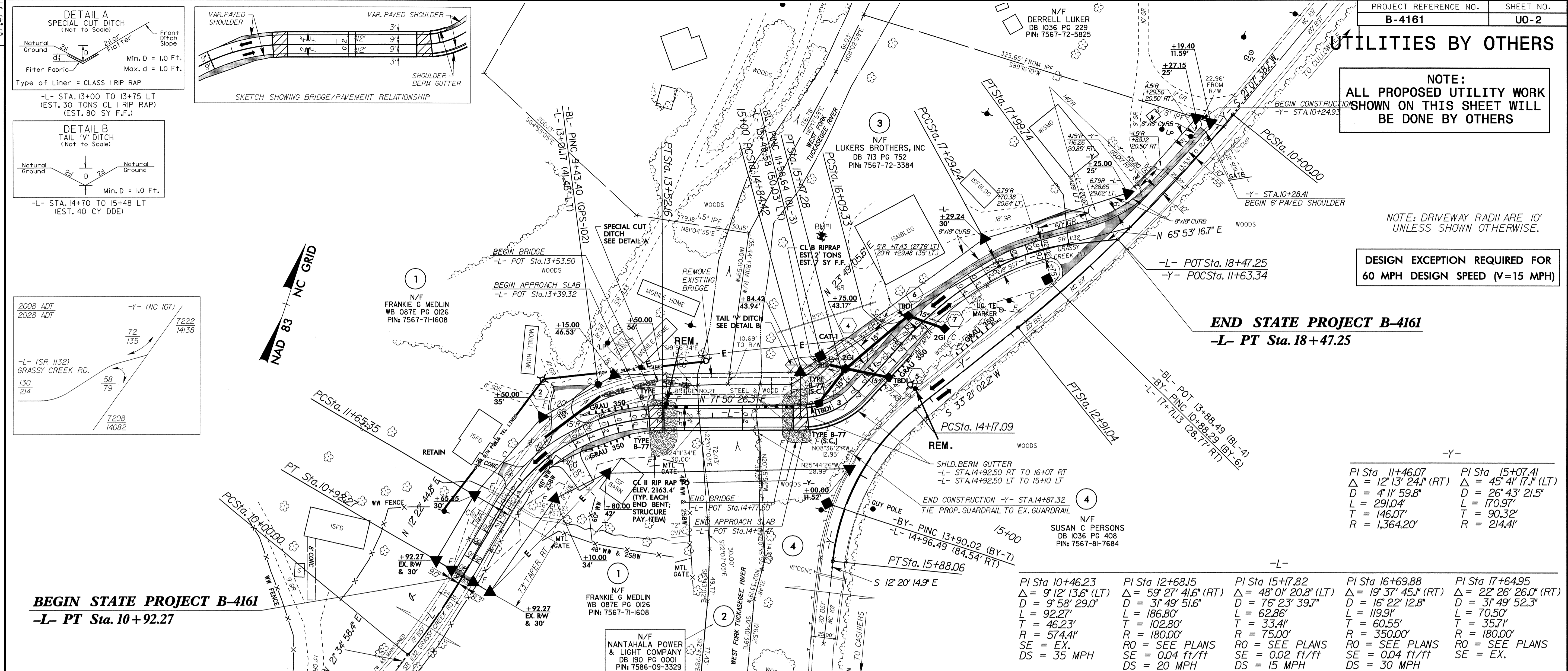
NOTE: DRIVEWAY RADII ARE 10' UNLESS SHOWN OTHERWISE.

DESIGN EXCEPTION REQUIRED FOR 60 MPH DESIGN SPEED (V=15 MPH)

END STATE PROJECT B-4161
-L- PT Sta. 18+47.25

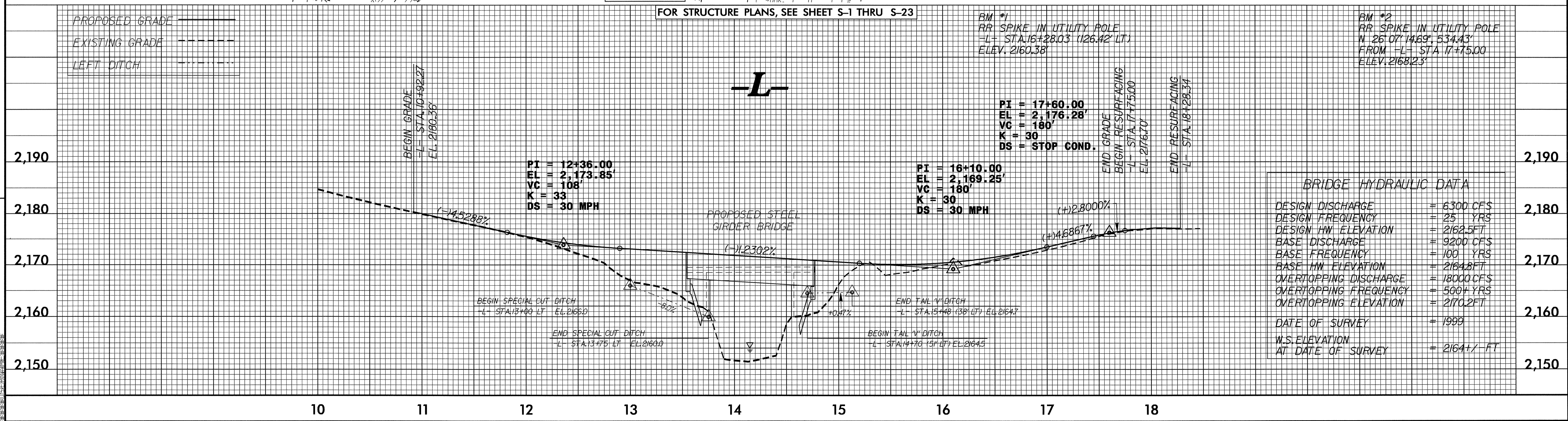


BEGIN STATE PROJECT B-4161
-L- PT Sta. 10+92.27



PI Sta 11+46.07 Δ = 12' 13" 24" (RT) D = 4' 11" 59.8" L = 291.04' T = 146.07' R = 1,364.20'	PI Sta 15+07.41 Δ = 45' 4" 17.1" (LT) D = 26' 43" 21.5" L = 170.97' T = 90.32' R = 214.41'
--	---

PI Sta 10+46.23 Δ = 9' 12" 13.6" (LT) D = 9' 58" 29.0" L = 92.27' T = 46.23' R = 574.41' SE = EX. DS = 35 MPH	PI Sta 12+68.15 Δ = 59' 27" 41.6" (RT) D = 31' 49" 51.6" L = 186.80' T = 102.80' R = 180.00' RO = SEE PLANS SE = 0.04 ft/ft DS = 20 MPH	PI Sta 15+17.82 Δ = 48' 01" 20.8" (LT) D = 76' 23" 39.7" L = 62.86' T = 33.41' R = 75.00' RO = SEE PLANS SE = 0.02 ft/ft DS = 15 MPH	PI Sta 16+69.88 Δ = 19' 37" 45.1" (RT) D = 16' 23" 12.8" L = 119.91' T = 60.55' R = 350.00' RO = SEE PLANS SE = 0.04 ft/ft DS = 30 MPH	PI Sta 17+64.95 Δ = 22' 26" 26.0" (RT) D = 31' 49" 52.3" L = 70.50' T = 35.71' R = 180.00' RO = SEE PLANS SE = EX. DS = 30 MPH
--	---	--	--	--



BRIDGE HYDRAULIC DATA

DESIGN DISCHARGE	= 6300 CFS	2,180
DESIGN FREQUENCY	= 25 YRS	
DESIGN HW ELEVATION	= 2162.5FT	
BASE DISCHARGE	= 9200 CFS	
BASE FREQUENCY	= 100 YRS	2,170
BASE HW ELEVATION	= 2164.8FT	
OVERTOPPING DISCHARGE	= 18000 CFS	
OVERTOPPING FREQUENCY	= 500 YRS	2,160
OVERTOPPING ELEVATION	= 2170.2FT	
DATE OF SURVEY	= 1999	
W.S. ELEVATION AT DATE OF SURVEY	= 2164 +/- FT	2,150

REVISIONS

08/15/2008 09:00:00 10/15/2008 10:00:00 11/15/2008 11:00:00 12/15/2008 12:00:00 13/15/2008 13:00:00 14/15/2008 14:00:00 15/15/2008 15:00:00 16/15/2008 16:00:00 17/15/2008 17:00:00 18/15/2008 18:00:00