

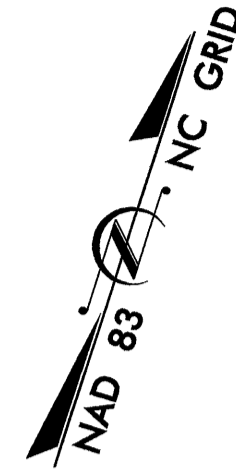
TIP PROJECT: B-4161

STATE OF NORTH CAROLINA
DIVISION OF HIGHWAYS

PLAN FOR PROPOSED
HIGHWAY EROSION CONTROL

JACKSON COUNTY

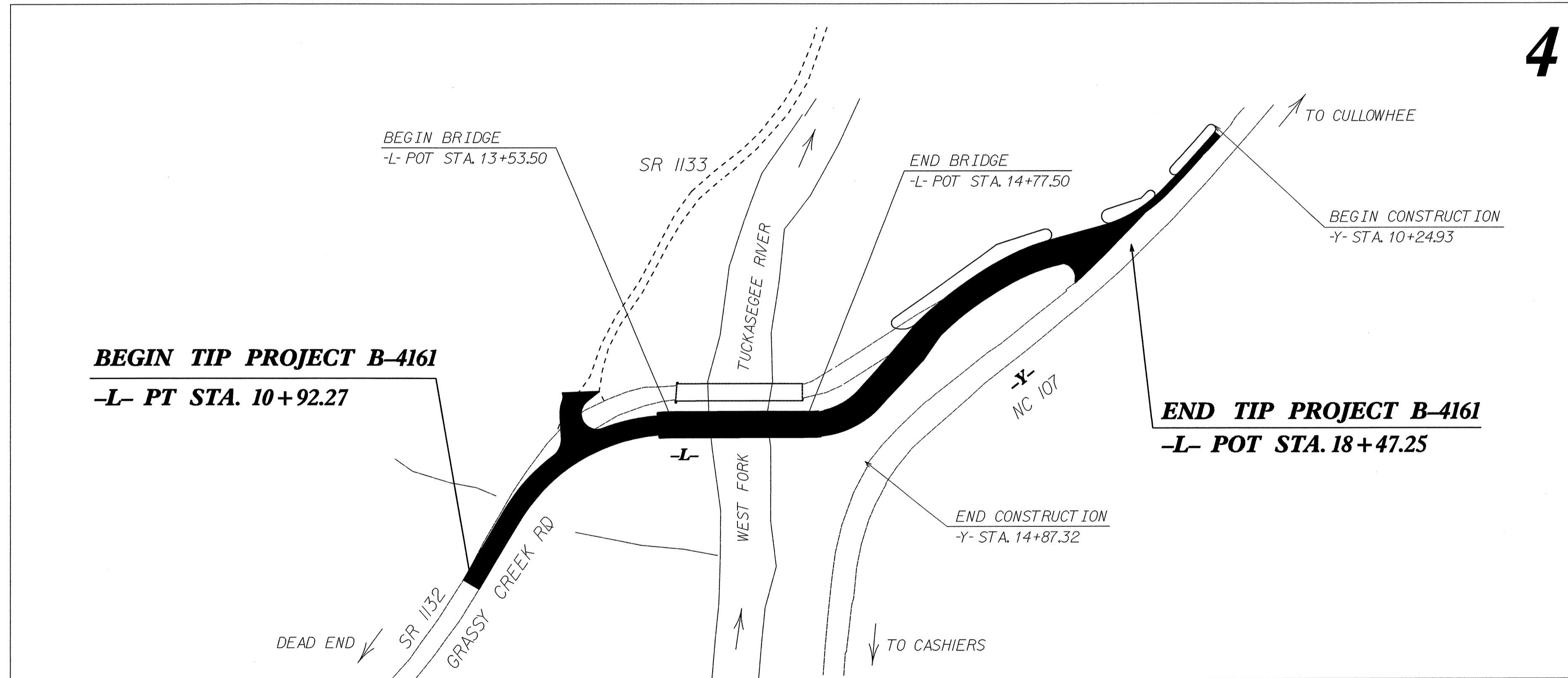
**LOCATION: BRIDGE #211 OVER WEST FORK TUCKASEGEE RIVER
ON SR 1132 (GRASSY CREEK ROAD) AND APPROACHES.
TYPE OF WORK: GRADING, DRAINAGE, PAVING, AND STRUCTURE**



STATE	STATE PROJECT REFERENCE NO.	SHEET NO.	TOTAL SHEETS
N.C.	B-4161	EC-1	
STATE PROJ. NO.	F.A. PROJ. NO.	DESCRIPTION	

EROSION AND SEDIMENT CONTROL MEASURES

Std. #	Description	Symbol
1630.03	Temporary Silt Ditch	TD
1630.05	Temporary Diversion	TD
1605.01	Temporary Silt Fence	III III III
1606.01	Special Sediment Control Fence	△△△△△△△△
1622.01	Temporary Berms and Slope Drains	— T —
1630.01	Riser Basin	⊙
1630.02	Silt Basin Type B	▨
1633.01	Temporary Rock Silt Check Type-A	▩
	Temporary Rock Silt Check Type-B	▶
	Wattle	⌒
1634.01	Temporary Rock Sediment Dam Type-A	▩
1634.02	Temporary Rock Sediment Dam Type-B	▩
1635.01	Rock Pipe Inlet Sediment Trap Type-A	⊕
1635.02	Rock Pipe Inlet Sediment Trap Type-B	⊕
1630.04	Stilling Basin	▭
	Rock Inlet Sediment Trap:	
1632.01	Type A	A
1632.02	Type B	B
1632.03	Type C	C
	Skimmer Basin	▭
	Tiered Skimmer Basin	▭
	Infiltration Basin	▭

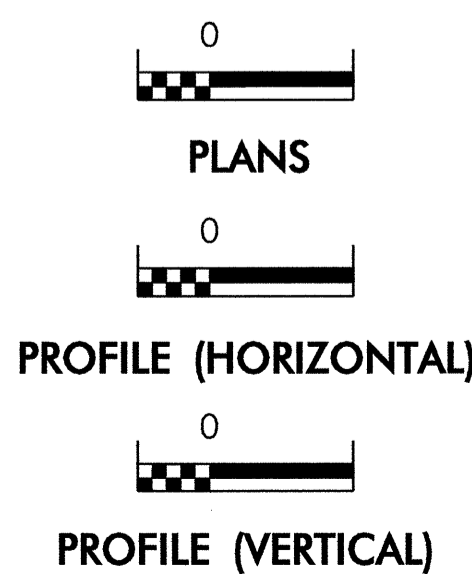


**THIS PROJECT CONTAINS
EROSION CONTROL PLANS
FOR CLEARING AND
GRUBBING PHASE OF
CONSTRUCTION.**

**THIS PROJECT HAS
BEEN DESIGNED TO
SENSITIVE WATERSHED
STANDARDS.**

**ENVIRONMENTALLY
SENSITIVE AREA(S) EXIST
ON THIS PROJECT**
*Refer To E. C. Special Provisions
for Special Considerations.*

GRAPHIC SCALE



ROADSIDE ENVIRONMENTAL UNIT
DIVISION OF HIGHWAYS
STATE OF NORTH CAROLINA

Prepared In the Office of:
ROADSIDE ENVIRONMENTAL UNIT
1 South Wilmington St.
Raleigh, NC 27611
2006 STANDARD SPECIFICATIONS

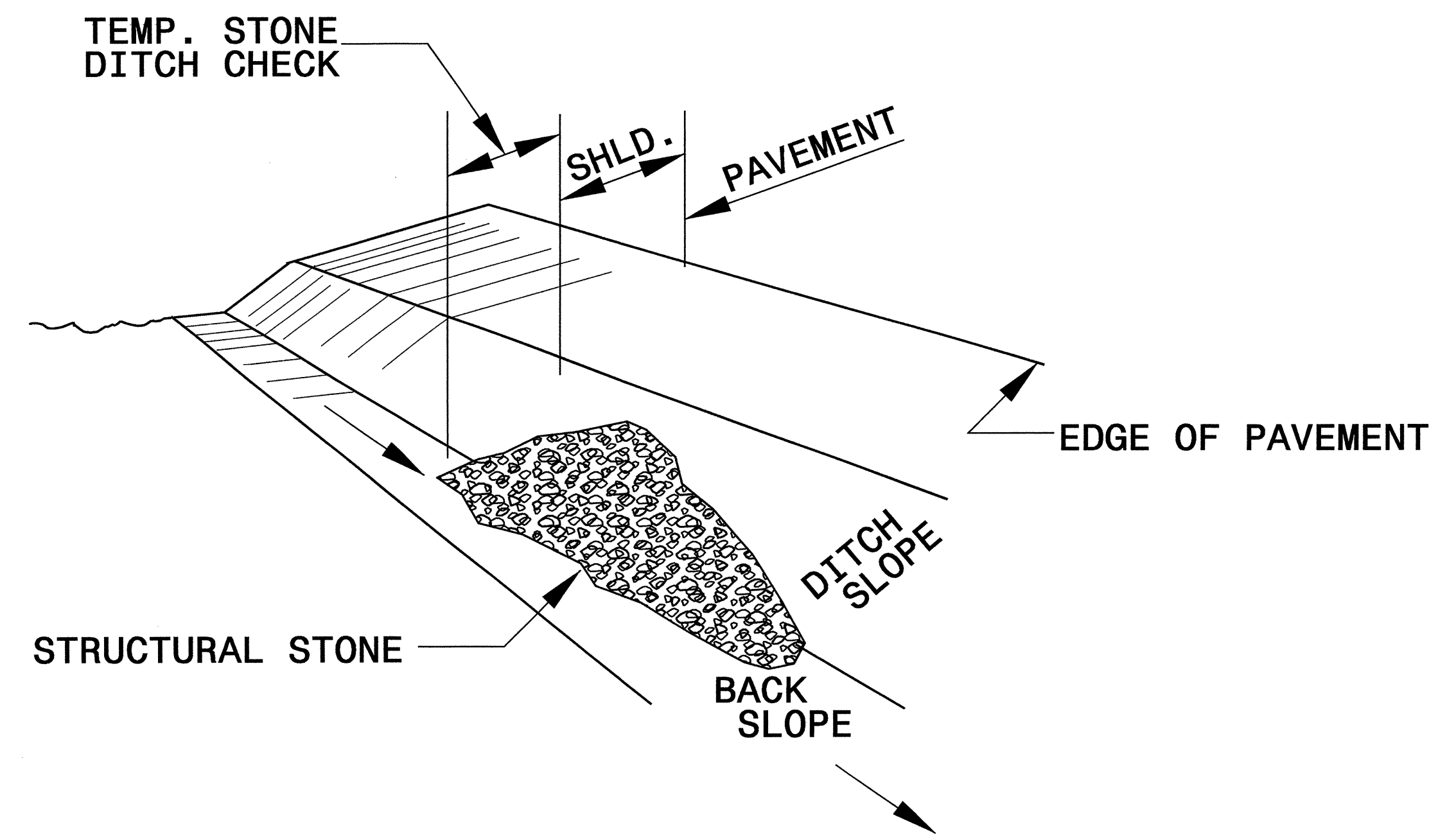
Roadway Standard Drawings

The following roadway english standards as appear in "Roadway Standard Drawings"- Roadway Design Unit - N. C. Department of Transportation - Raleigh, N. C., dated July 18, 2006 and the latest revision thereto are applicable to this project and by reference hereby are considered a part of these plans.

- | | |
|--------------------------------------|--|
| 1605.01 Temporary Silt Fence | 1632.03 Rock Inlet Sediment Trap Type C |
| 1607.01 Gravel Construction Entrance | 1633.01 Temporary Rock Silt Check Type A |
| 1630.02 Silt Basin Type B | 1634.02 Temporary Rock Sediment Dam Type B |
| | 1635.02 Rock Pipe Inlet Sediment Trap Type B |

PROJECT REFERENCE NO. <i>B-4161</i>	SHEET NO. <i>EC-2</i>
RW SHEET NO.	
ROADWAY DESIGN ENGINEER	HYDRAULICS ENGINEER

TEMPORARY ROCK SILT CHECK TYPE 'B' DETAIL

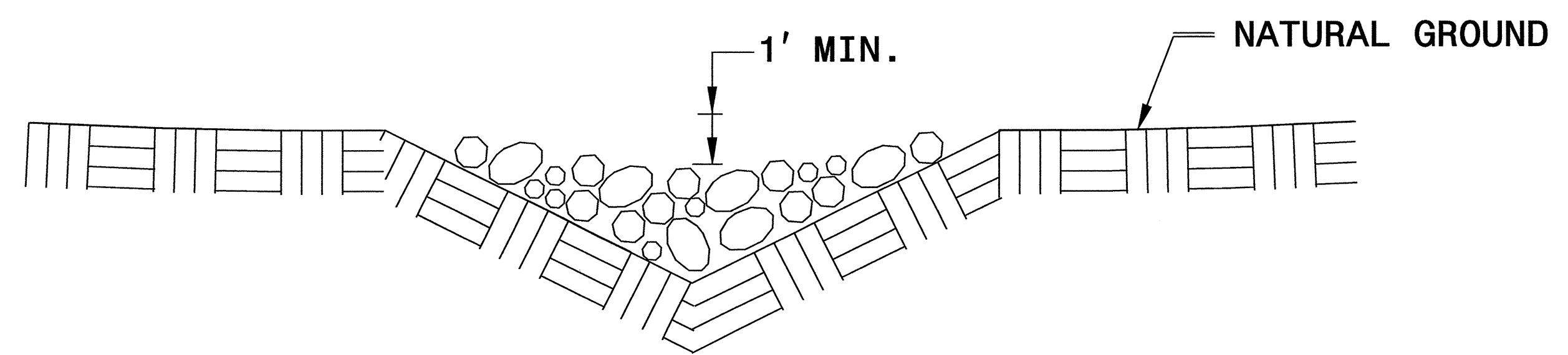


ISOMETRIC VIEW

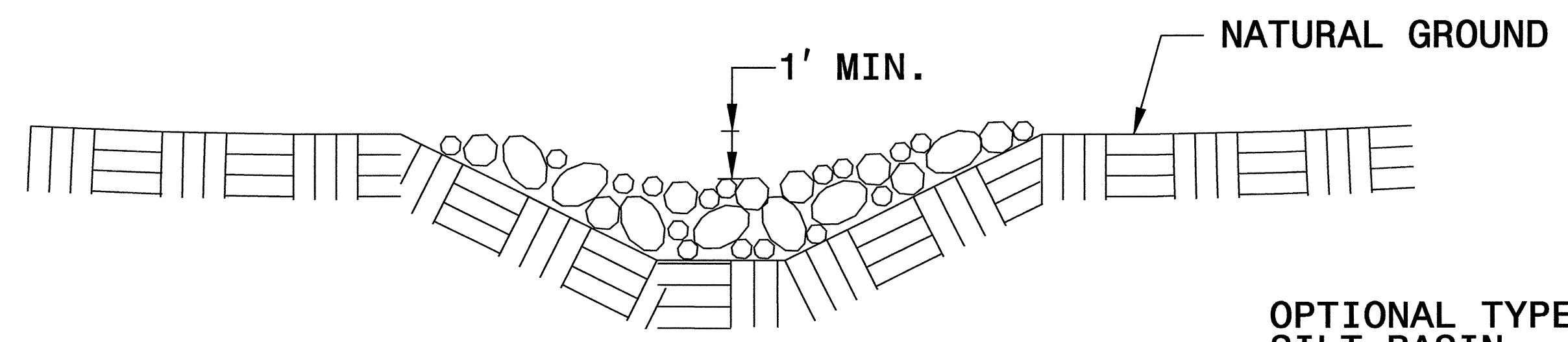
NOTES:

USE CLASS 'B' EROSION CONTROL STONE FOR STRUCTURAL STONE.

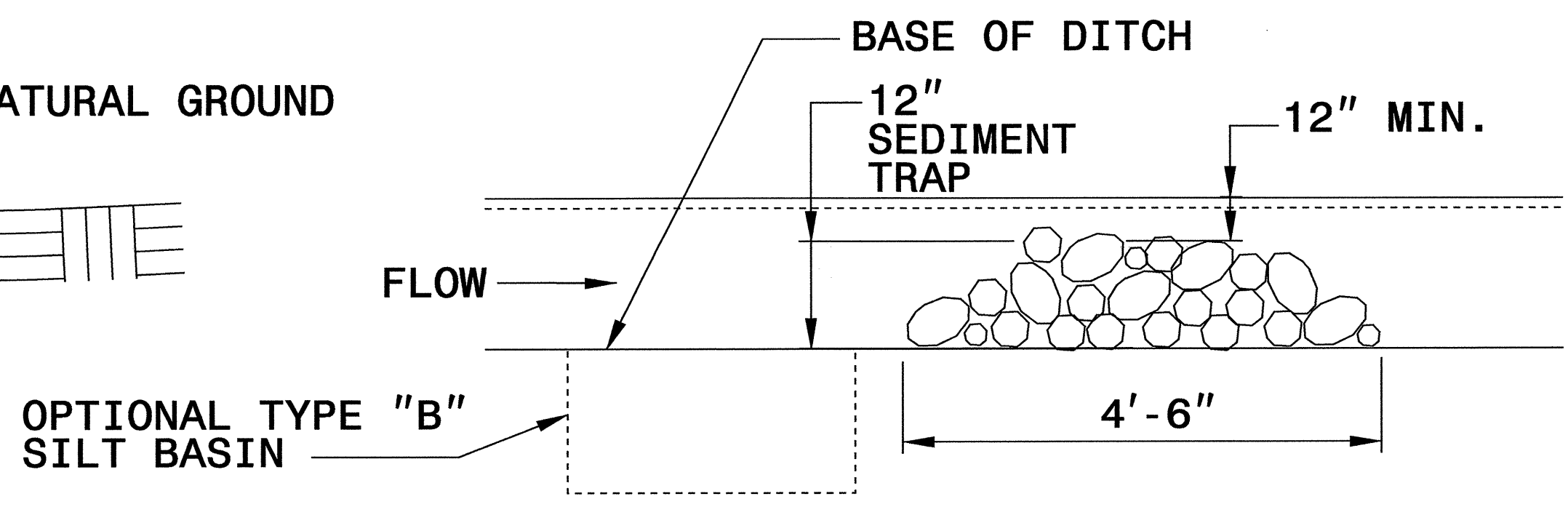
THE ENGINEER MAY DIRECT THE OPTION OF CLASS "A" STONE FOR SITES HAVING LESS THAN ONE (1) ACRE DRAINAGE AREA AND A DITCH GRADE LESS THAN 3%.



CROSS SECTION VEE DITCH



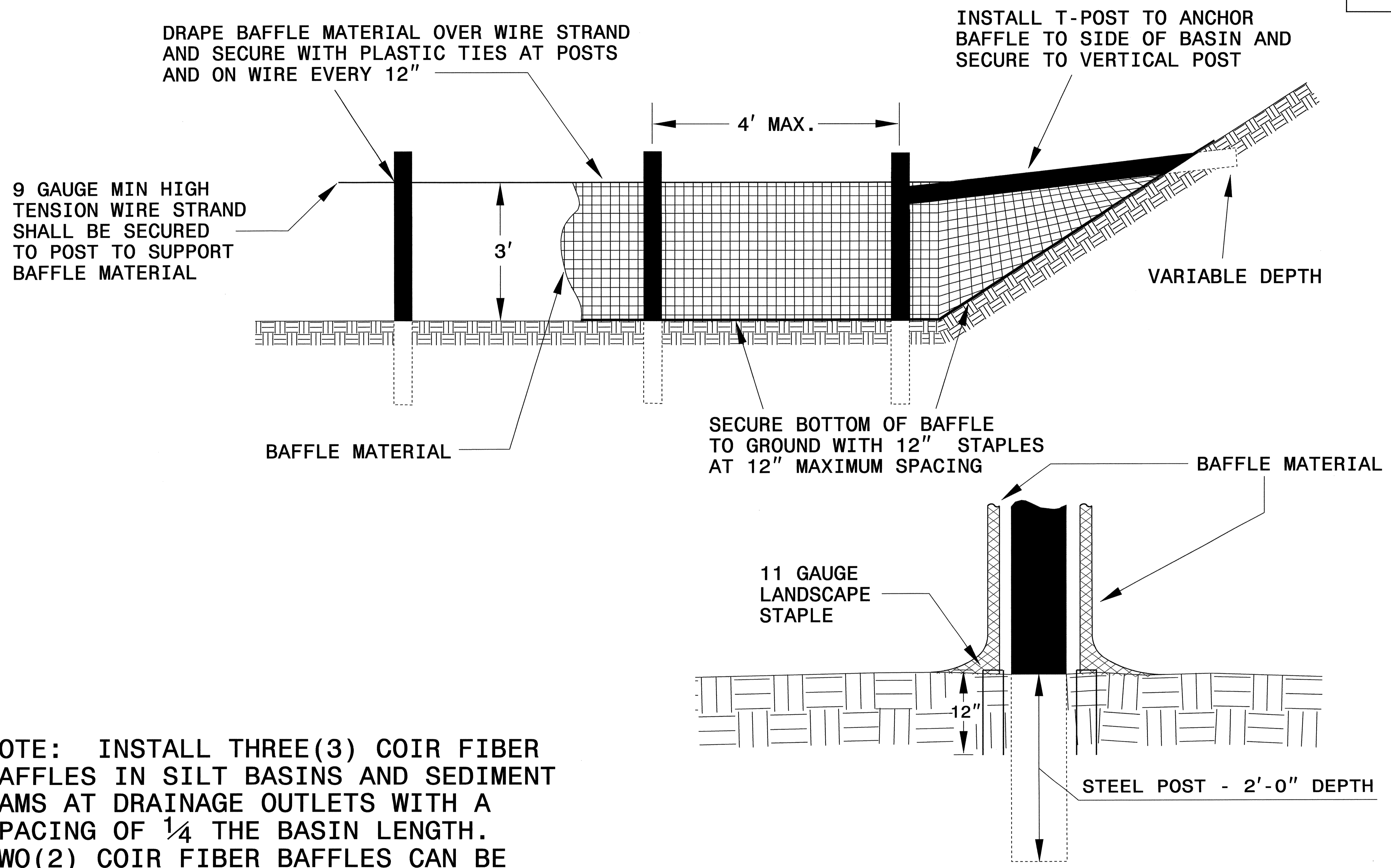
CROSS SECTION TRAPEZOIDAL DITCH



ELEVATION VIEW

PROJECT REFERENCE NO. B-4161	SHEET NO. EC-2A
RW SHEET NO.	
ROADWAY DESIGN ENGINEER	HYDRAULICS ENGINEER

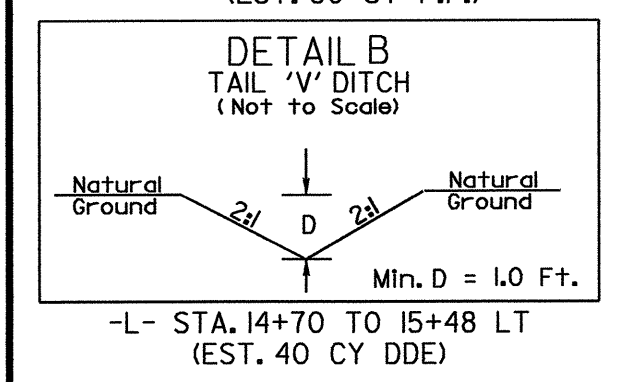
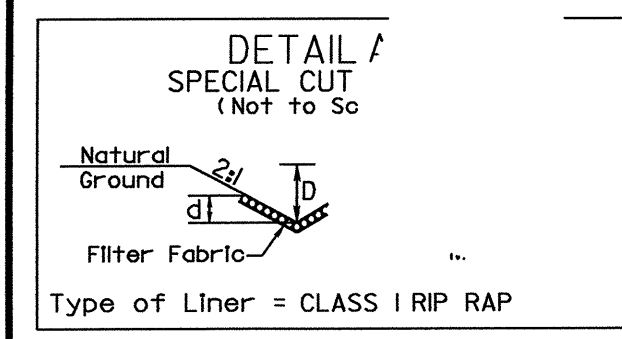
COIR FIBER BAFFLE DETAIL



NOTE: INSTALL THREE(3) COIR FIBER BAFFLES IN SILT BASINS AND SEDIMENT DAMS AT DRAINAGE OUTLETS WITH A SPACING OF $\frac{1}{4}$ THE BASIN LENGTH. TWO(2) COIR FIBER BAFFLES CAN BE INSTALLED IN SILT BASINS AND DAMS LESS THAN 20 FT. IN LENGTH WITH A SPACING OF $\frac{1}{3}$ THE BASIN LENGTH.

BAFFLE MATERIAL SHALL BE SECURED TO THE BOTTOM AND SIDES OF BASIN USING 12" LANDSCAPE STAPLES

PROJECT REFERENCE NO.	SHEET NO.
B-4161	EC-4/CONST.4
RW SHEET NO.	
ROADWAY DESIGN ENGINEER	HYDRAULICS ENGINEER



CLEARING AND GRUBBING EROSION CONTROL FOR CONSTRUCTION SHEET 4

NOTE: PLACE TEMPORARY ROCK SEDIMENT DAMS TYPE - B AND TEMPORARY ROCK SILT CHECKS TYPE - A AT DRAINAGE OUTLETS.

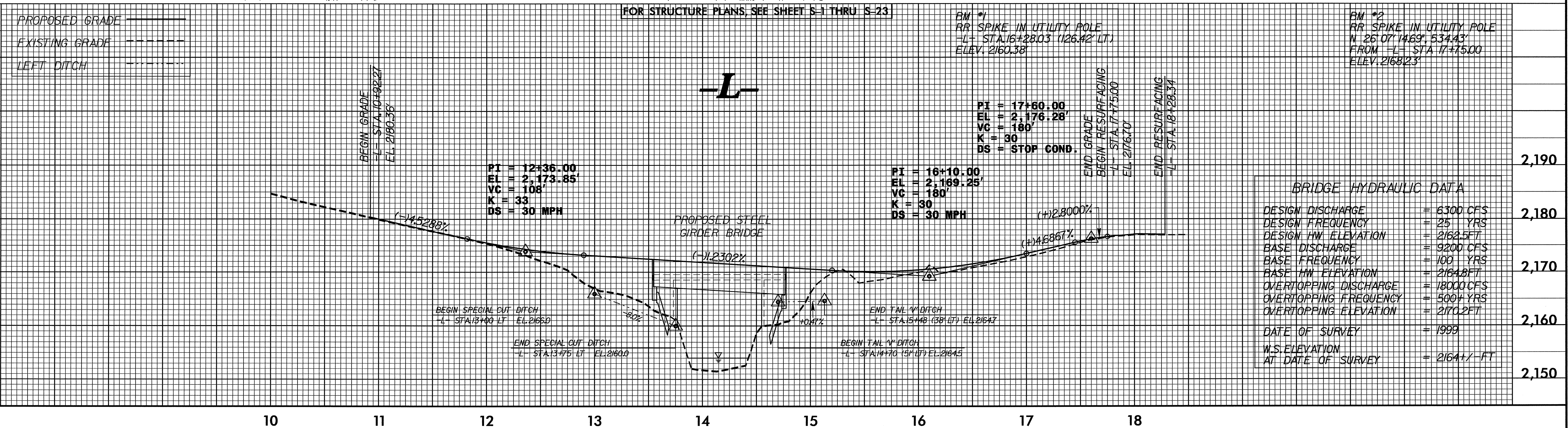
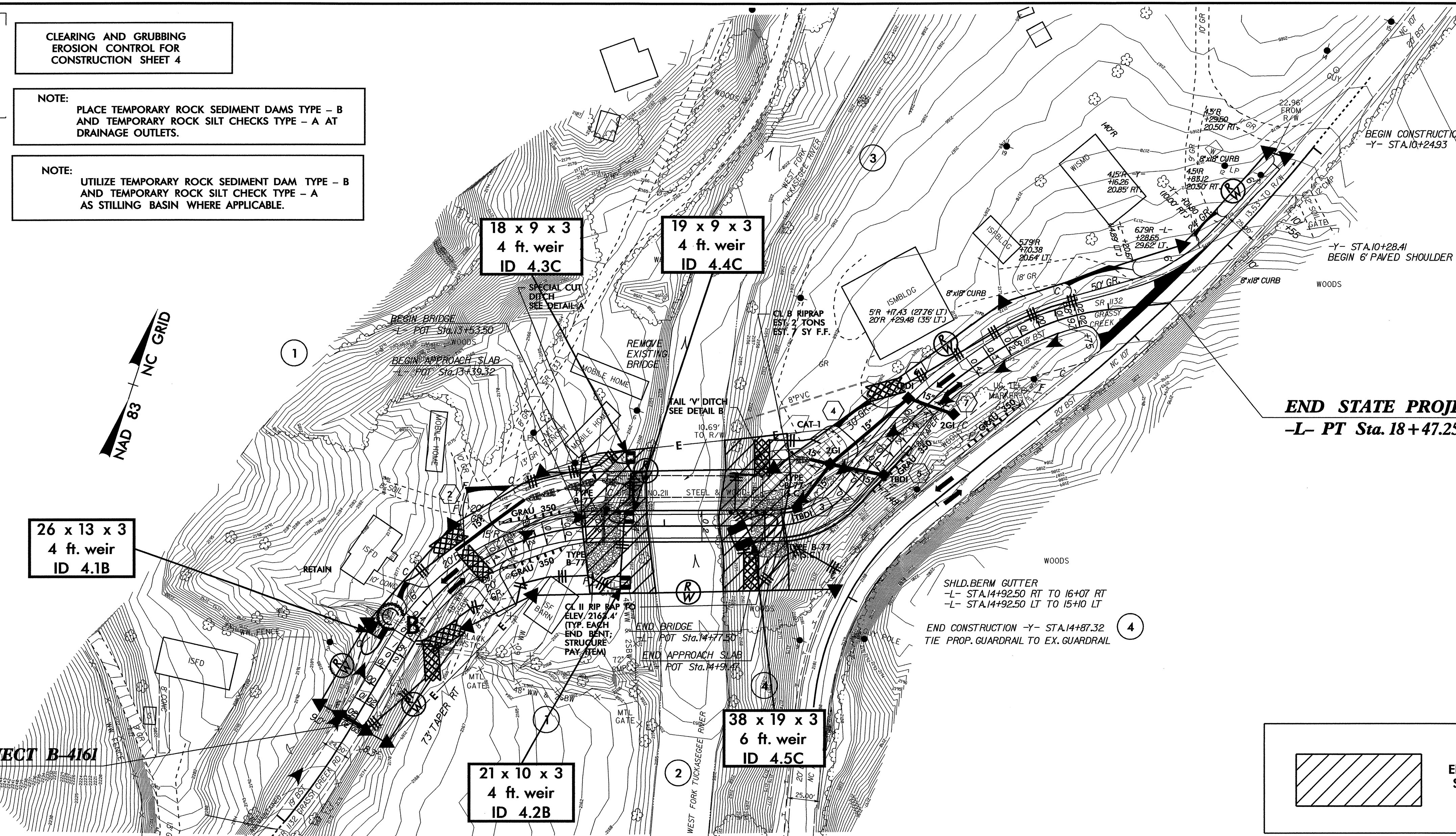
NOTE: UTILIZE TEMPORARY ROCK SEDIMENT DAM TYPE - B AND TEMPORARY ROCK SILT CHECK TYPE - A AS STILLING BASIN WHERE APPLICABLE.

NOTE: DRIVEWAY RADII ARE 10' UNLESS SHOWN OTHERWISE.

DESIGN EXCEPTION REQUIRED FOR 60 MPH DESIGN SPEED (V=15 MPH)

END STATE PROJECT B-4161
-L- PT Sta. 18+47.25

BEGIN STATE PROJECT B-4161
-L- PT Sta. 10+92.27

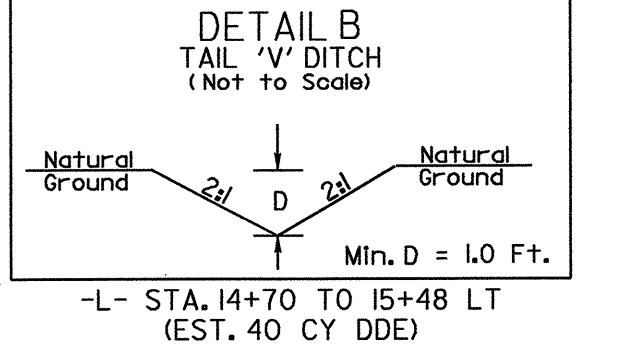
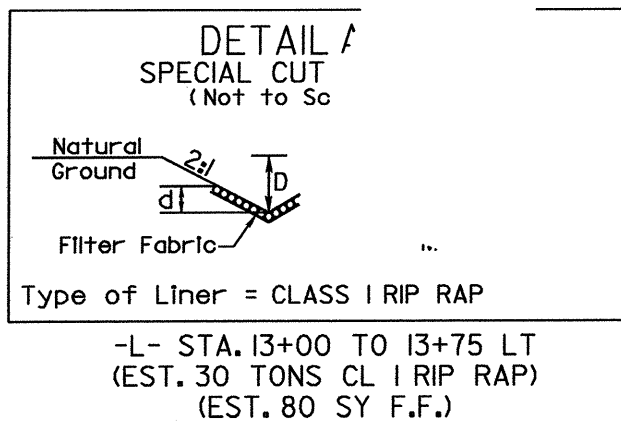


BRIDGE HYDRAULIC DATA

DESIGN DISCHARGE	= 6300 CFS
DESIGN FREQUENCY	= 25 YRS
DESIGN HW ELEVATION	= 2162.5 FT
BASE DISCHARGE	= 9200 CFS
BASE FREQUENCY	= 100 YRS
BASE HW ELEVATION	= 2164.8 FT
OVERTOPPING DISCHARGE	= 18000 CFS
OVERTOPPING FREQUENCY	= 500+ YRS
OVERTOPPING ELEVATION	= 2170.2 FT
DATE OF SURVEY	= 1999
W.S. ELEVATION AT DATE OF SURVEY	= 2164.1 FT

28-JAN-2008 13:22 g:\p\proj\ec\35-b\4161\environmental\design\b4161-ec_psh04.dgn

8/17/99

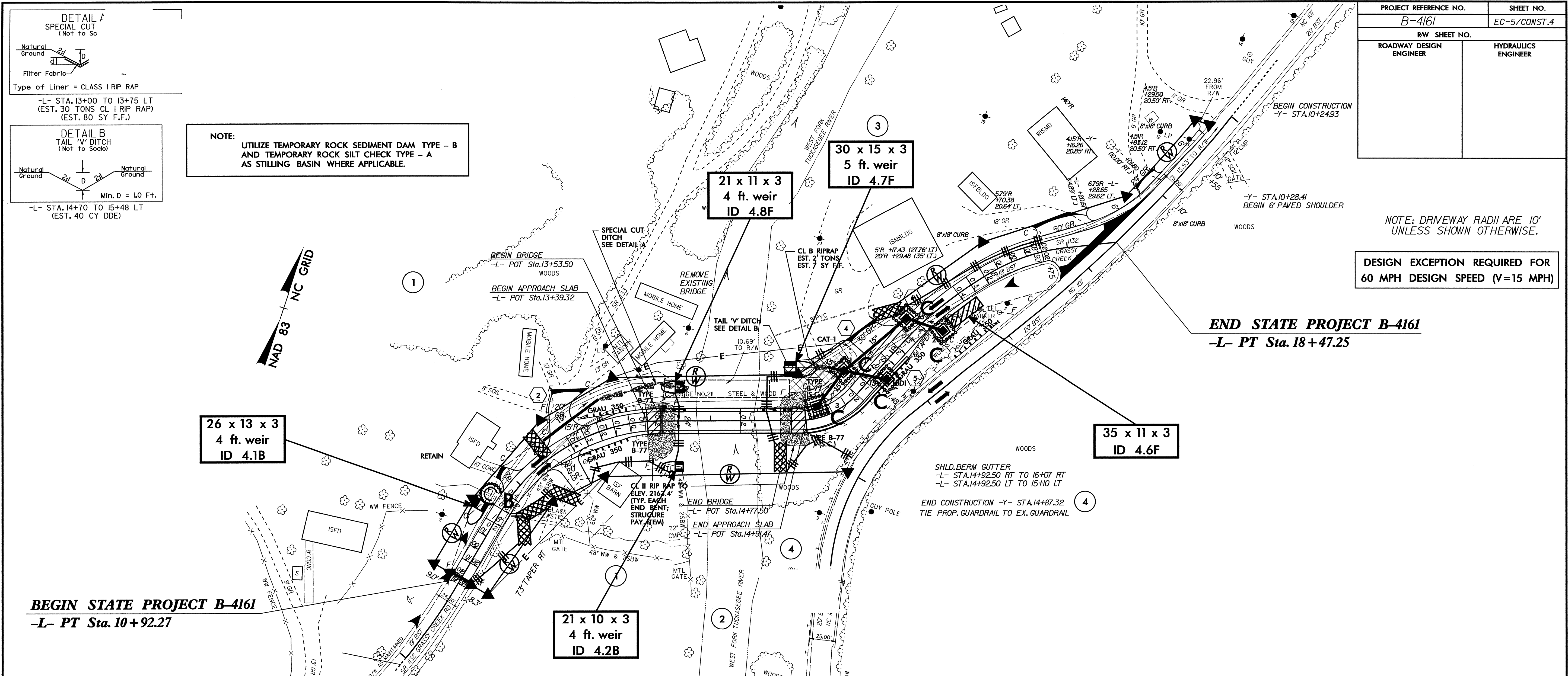


NOTE:
UTILIZE TEMPORARY ROCK SEDIMENT DAM TYPE - B
AND TEMPORARY ROCK SILT CHECK TYPE - A
AS STILLING BASIN WHERE APPLICABLE.

PROJECT REFERENCE NO. B-4161	SHEET NO. EC-5/CONST.4
RW SHEET NO.	
ROADWAY DESIGN ENGINEER	HYDRAULICS ENGINEER

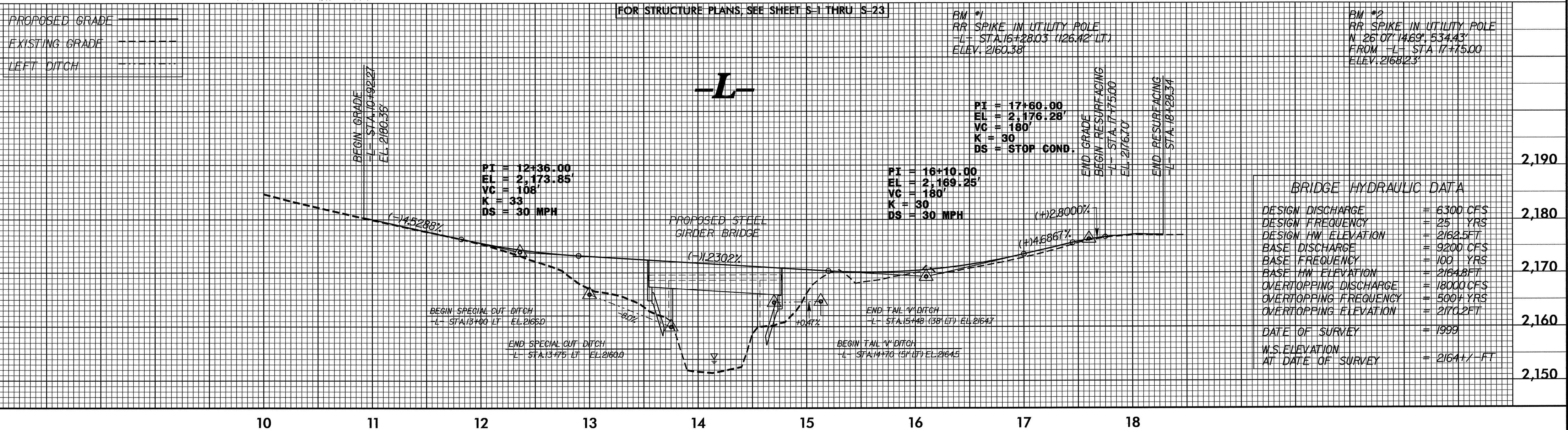
NOTE: DRIVEWAY RADII ARE 10'
UNLESS SHOWN OTHERWISE.

**DESIGN EXCEPTION REQUIRED FOR
60 MPH DESIGN SPEED (V=15 MPH)**



BEGIN STATE PROJECT B-4161
-L- PT Sta. 10+92.27

END STATE PROJECT B-4161
-L- PT Sta. 18+47.25



28-JAN-2008 13:22
g:\tippro\ec\ec\5\B-4161\environmental\design\B4161-ec_psh04.dgn
A1 REV 2/18/02