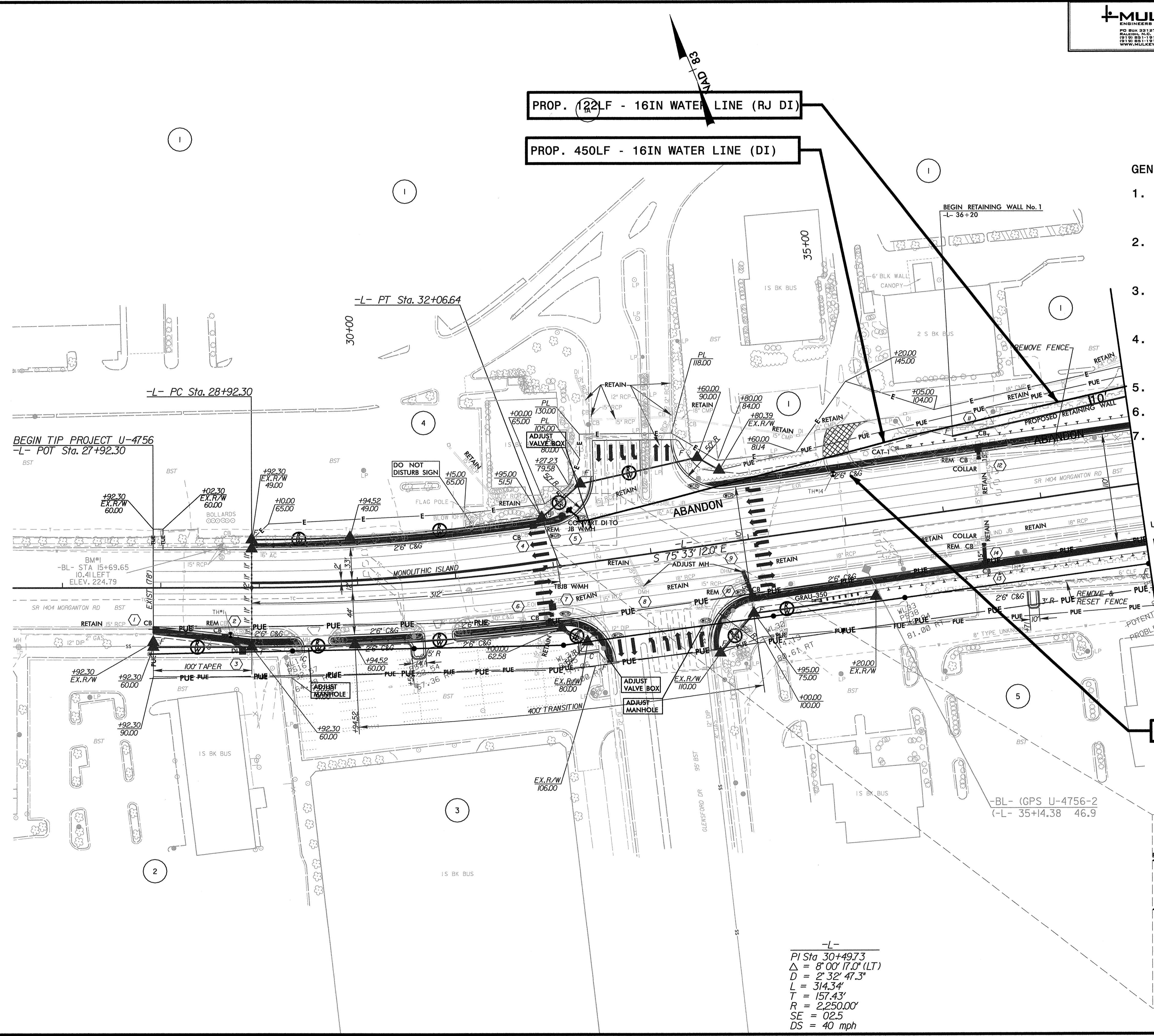


PROP. 122LF - 16IN WATER LINE (RJ DI)
PROP. 450LF - 16IN WATER LINE (DI)

GENERAL NOTES:

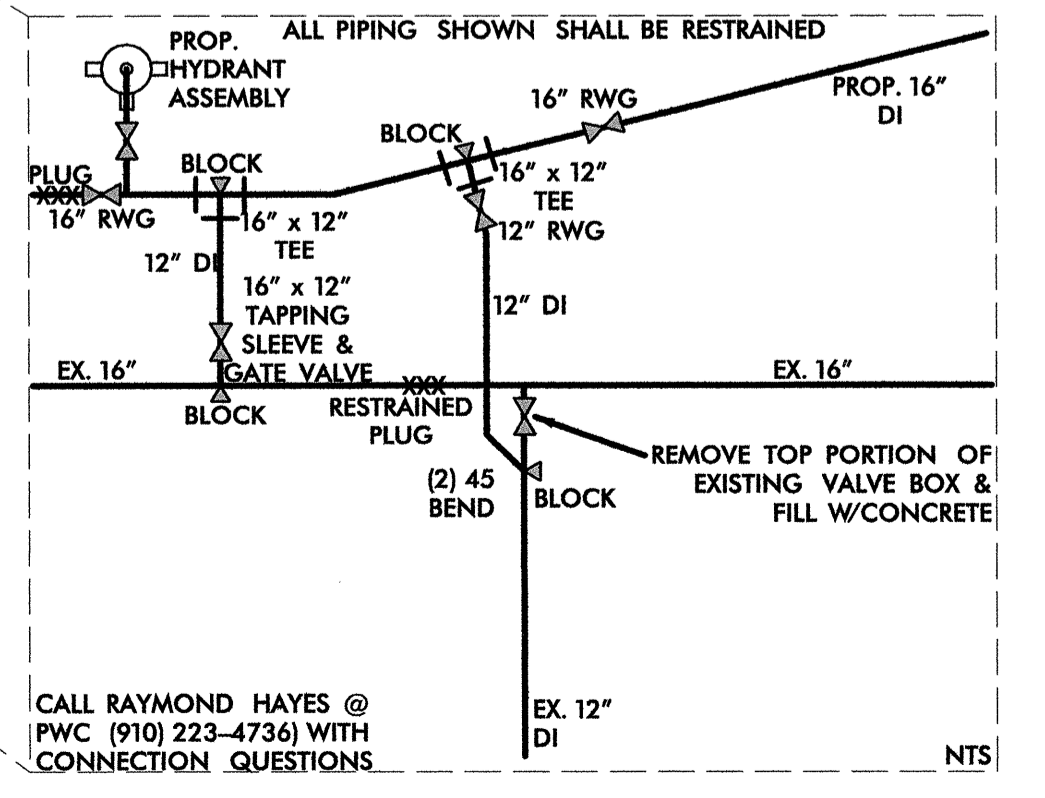
1. THE SHUTDOWN OF WATER LINES FOR RELOCATION SHALL BE COORDINATED WITH THE APPROPRIATE UTILITY OWNER.
2. THE CONTRACTOR SHALL ROTATE PROPOSED BENDS AS NECESSARY TO PROVIDE FOR VERTICAL ALIGNMENT.
3. THE CONTRACTOR SHALL DETERMINE THE ACTUAL LENGTH TO BE RESTRAINED FOR ALL TIE-IN SECTIONS.
4. ALL FITTINGS ARE INCIDENTAL TO THE WATER LINE REFER TO NCDOT STD SPEC 1036 & 1510.
5. TRENCHLESS METHOD TO BE BORE & JACK
6. ALL RESTRAINED JOINT TO BE FLEXIBLE
7. AC TO DI TRANSITIONS ARE INCIDENTAL TO THE WATER LINE.



MATCH TO SHEET 5
-L- STA. 38+00.00

PROP. 541LF - ABANDONED 16IN PIPE

-L-
PI Sta 30+49.73
Δ = 8° 00' 17.0" (LT)
D = 2° 32' 47.3"
L = 314.34'
T = 157.43'
R = 2,250.00'
SE = 02.5
DS = 40 mph



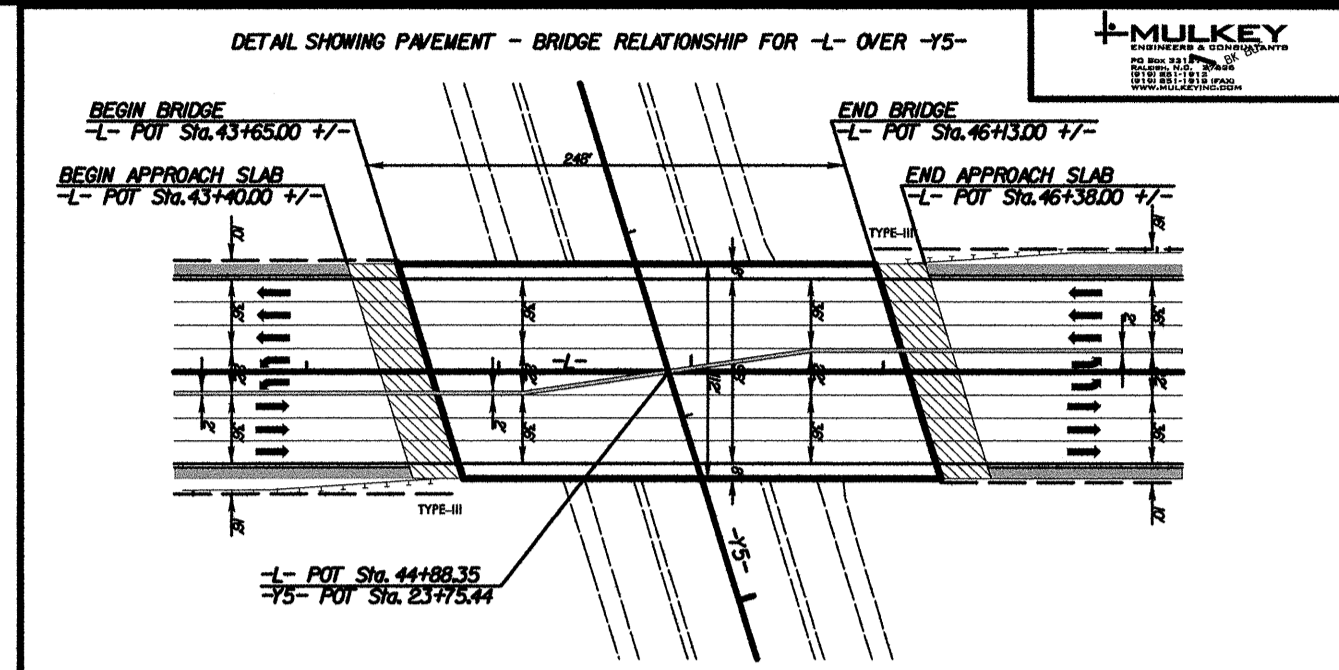
CALL RAYMOND HAYES @
PWC (910) 223-4736 WITH
CONNECTION QUESTIONS

NTS

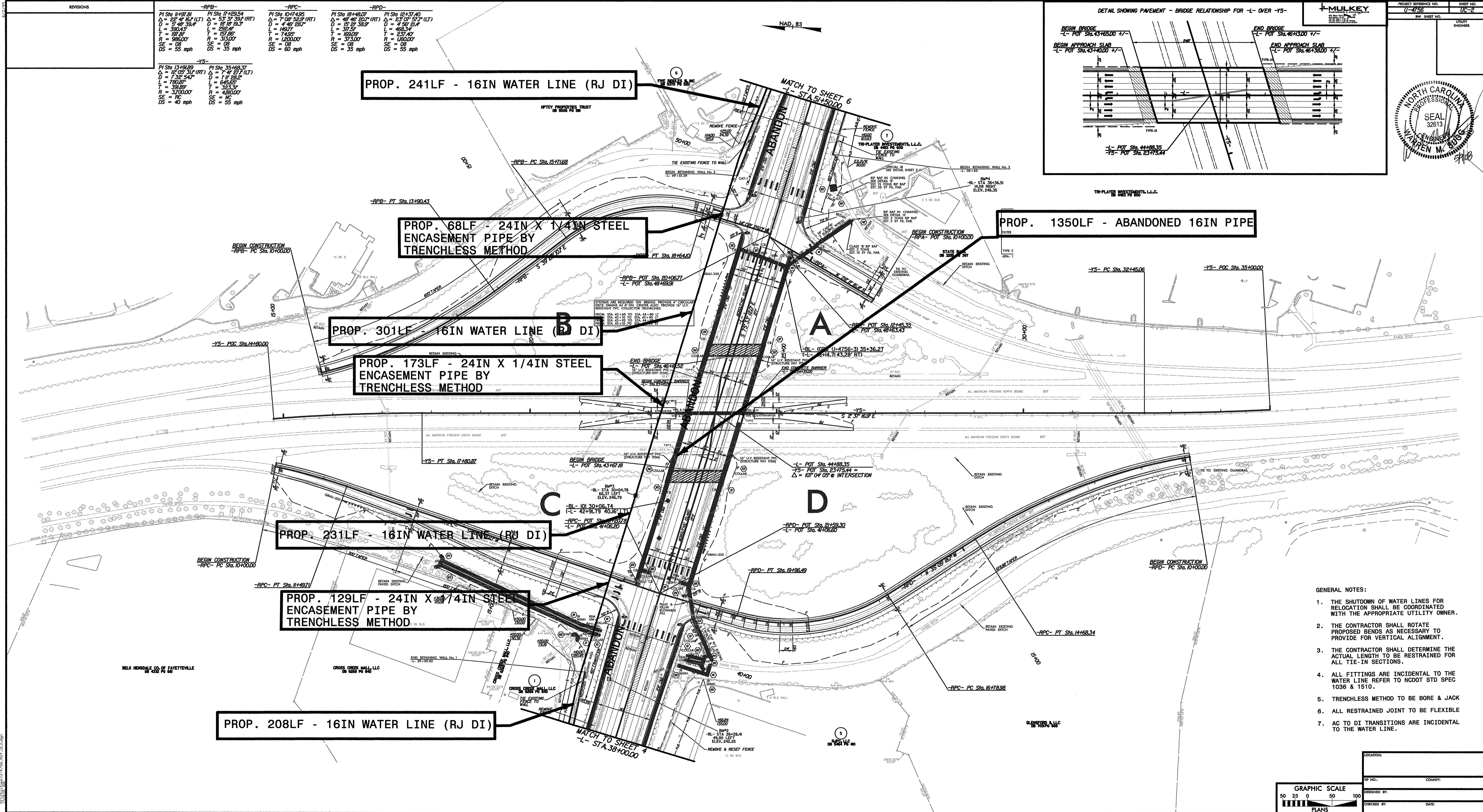
REVISIONS

-RPB-		-RPC-		-RPD-	
PI Sta 11+49.81	PI Sta 17+49.54	PI Sta 10+74.95	PI Sta 19+46.07	PI Sta 12+37.40	PI Sta 12+37.40
$\Delta = 32^\circ 41' 52.14" (LT)$	$\Delta = 53^\circ 31' 33.14" (RT)$	$\Delta = 70^\circ 32' 59" (RT)$	$\Delta = 40^\circ 40' 20.00" (RT)$	$\Delta = 23^\circ 07' 52.24" (LT)$	$\Delta = 23^\circ 07' 52.24" (LT)$
D = 5' 40" 39.4"	D = 18' 19" 13.3"	D = 4' 46" 28.7"	D = 15' 27" 58.5"	D = 4' 56" 21.4"	D = 4' 56" 21.4"
L = 350.43'	L = 658.47'	L = 49.01'	L = 317.55'	L = 98.54'	L = 98.54'
T = 187.07'	T = 323.31'	T = 14.55'	T = 165.09'	T = 231.70'	T = 231.70'
R = 985.00'	R = 313.00'	R = 1200.00'	R = 373.00'	R = 1260.00'	R = 1260.00'
SE = 08	SE = 08	SE = 08	SE = 08	SE = 08	SE = 08
DS = 55 mph	DS = 35 mph	DS = 60 mph	DS = 35 mph	DS = 55 mph	DS = 55 mph

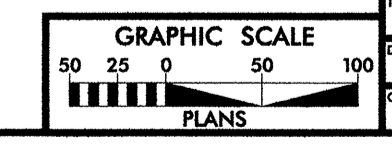
-Y5-	
PI Sta 13+49.89	PI Sta 35+469.37
$\Delta = 12^\circ 05' 34.1" (RT)$	$\Delta = 7^\circ 41' 27.1" (LT)$
D = 1' 36" 94.7"	D = 11' 38.5"
L = 780.87'	L = 645.85'
T = 394.89'	T = 323.31'
R = 3700.00'	R = 480.00'
SE = 08	SE = 08
DS = 40 mph	DS = 35 mph



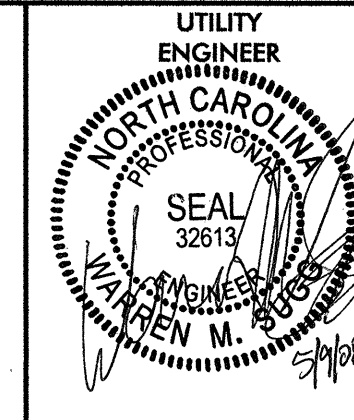
MULKEY
PROJECT REFERENCE NO. 17-0758
SHEET NO. 10-2
UTILITY ENGINEER
NORTH CAROLINA PROFESSIONAL SEAL 32613
WARREN M. BROS



- GENERAL NOTES:
1. THE SHUTDOWN OF WATER LINES FOR RELOCATION SHALL BE COORDINATED WITH THE APPROPRIATE UTILITY OWNER.
 2. THE CONTRACTOR SHALL ROTATE PROPOSED BENDS AS NECESSARY TO PROVIDE FOR VERTICAL ALIGNMENT.
 3. THE CONTRACTOR SHALL DETERMINE THE ACTUAL LENGTH TO BE RESTRAINED FOR ALL TIE-IN SECTIONS.
 4. ALL FITTINGS ARE INCIDENTAL TO THE WATER LINE REFER TO NCDOT STD SPEC 1036 & 1510.
 5. TRENCHLESS METHOD TO BE BORE & JACK
 6. ALL RESTRAINED JOINT TO BE FLEXIBLE
 7. AC TO DI TRANSITIONS ARE INCIDENTAL TO THE WATER LINE.



LOCATION: _____
 COUNTY: _____
 DESIGNED BY: _____
 CHECKED BY: _____
 DATE: _____



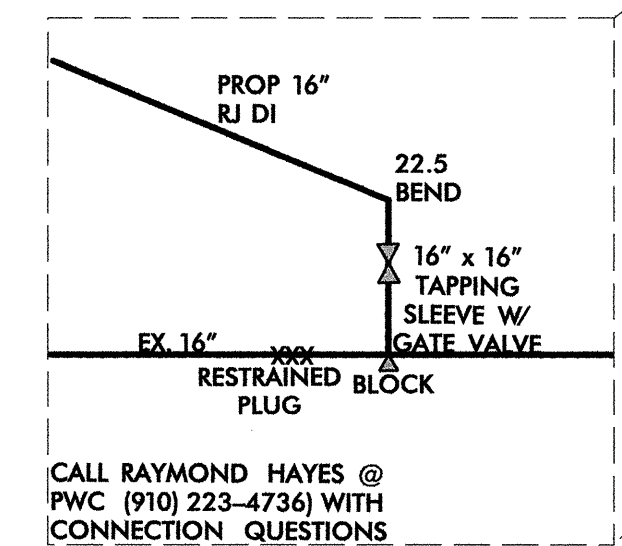
-Y3-
PI Sta 11+40.87
 $\Delta = 29^{\circ} 05' 46.0''$ (RT)
D = 10' 33' 19.6"
L = 275.65'
T = 140.87'
R = 542.81'
SE = 04
DS = 40 mph

PROP. 363LF - 16IN WATER LINE (RJ DI)

GENERAL NOTES:

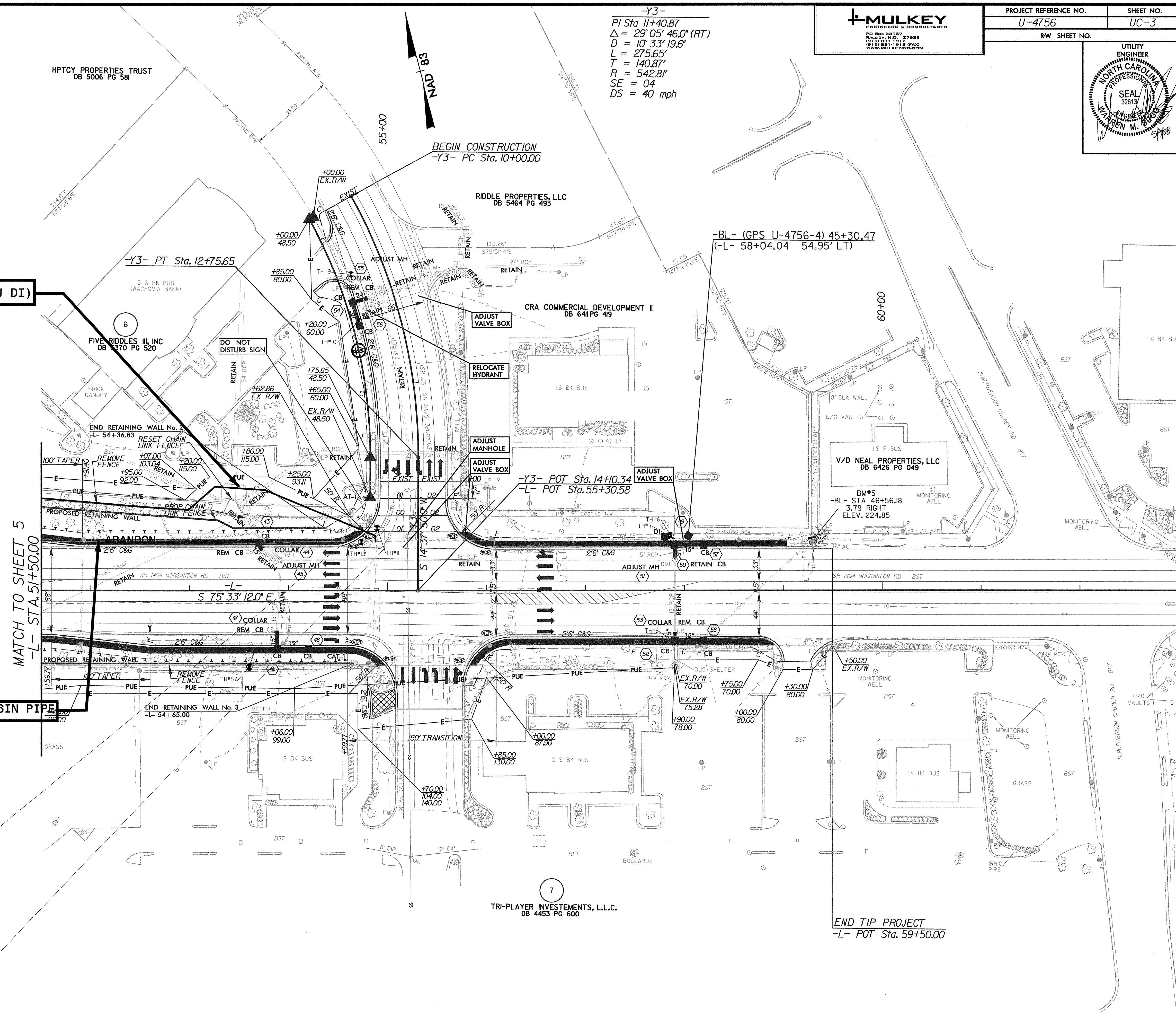
1. THE SHUTDOWN OF WATER LINES FOR RELOCATION SHALL BE COORDINATED WITH THE APPROPRIATE UTILITY OWNER.
2. THE CONTRACTOR SHALL ROTATE PROPOSED BENDS AS NECESSARY TO PROVIDE FOR VERTICAL ALIGNMENT.
3. THE CONTRACTOR SHALL DETERMINE THE ACTUAL LENGTH TO BE RESTRAINED FOR ALL TIE-IN SECTIONS.
4. ALL FITTINGS ARE INCIDENTAL TO THE WATER LINE REFER TO NCDOT STD SPEC 1036 & 1510.
5. TRENCHLESS METHOD TO BE BORE & JACK
6. ALL RESTRAINED JOINT TO BE FLEXIBLE
7. AC TO DI TRANSITIONS ARE INCIDENTAL TO THE WATER LINE.

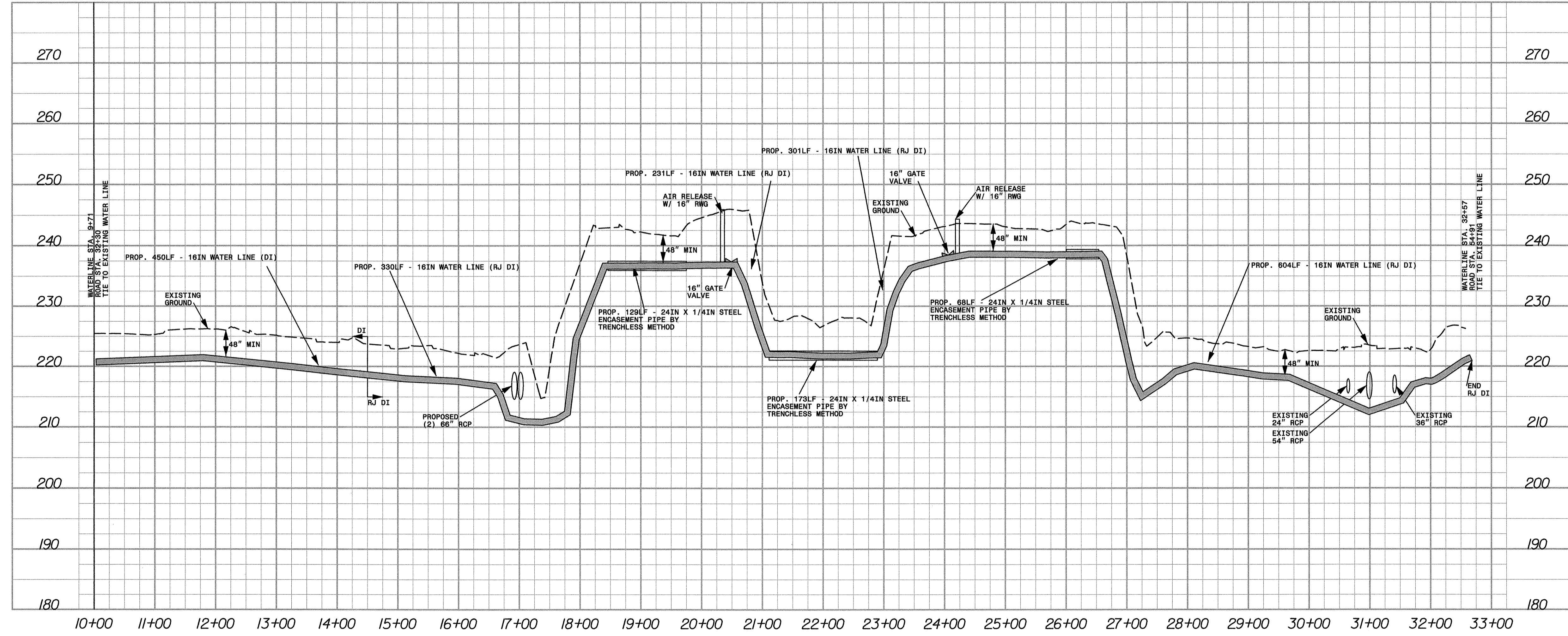
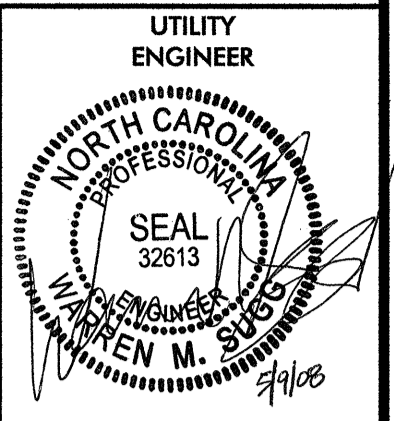
PROP. 333LF - ABANDONED 16IN PIPE

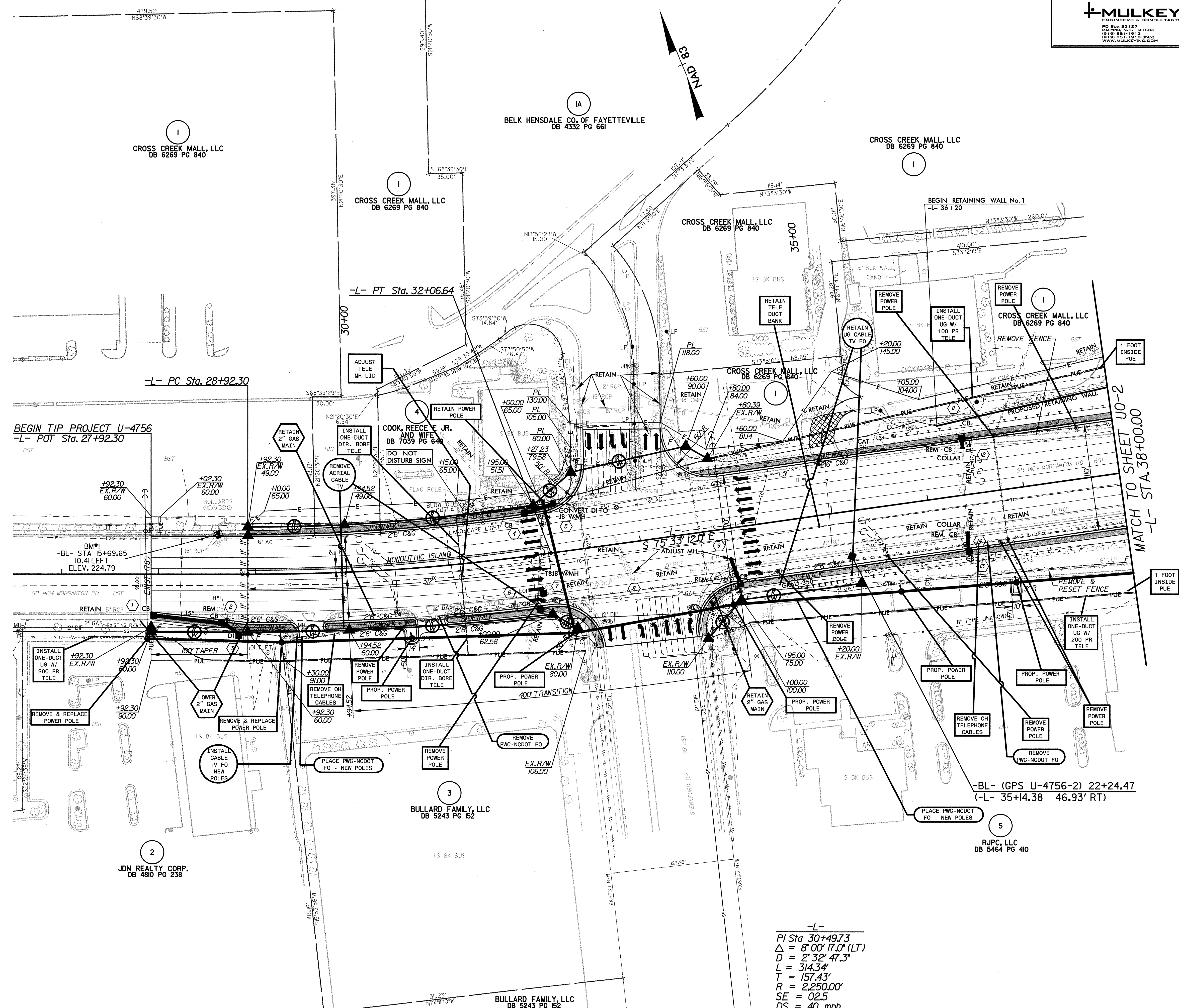


MATCH TO SHEET 5
-L- STA. 51+50.00

END TIP PROJECT
-L- POT Sta. 59+50.00







REVISIONS

-L-
 $PI\ Sta\ 30+49.73$
 $\Delta = 8'00''\ 17.0''\ (LT)$
 $D = 2'32''\ 47.3''$
 $L = 314.34'$
 $T = 157.43'$
 $R = 2,250.00'$
 $SE = 02.5$
 $DS = 40\ mph$

8/17/99
 8/5/2008
 S:\Projects\U-4756\RDY_U01.dgn

BEGIN TIP PROJECT U-4756
 -L- POT Sta. 27+92.30

-L- PC Sta. 28+92.30

-L- PT Sta. 32+06.64

-BL- (GPS U-4756-2) 22+24.47
 (-L- 35+14.38 46.93' RT)

MATCH TO SHEET U0-2
 -L- STA. 38+00.00

CROSS CREEK MALL, LLC
 DB 6269 PG 840

CROSS CREEK MALL, LLC
 DB 6269 PG 840

IA
 BELK HENSDALE CO. OF FAYETTEVILLE
 DB 4332 PG 661

CROSS CREEK MALL, LLC
 DB 6269 PG 840

CROSS CREEK MALL, LLC
 DB 6269 PG 840

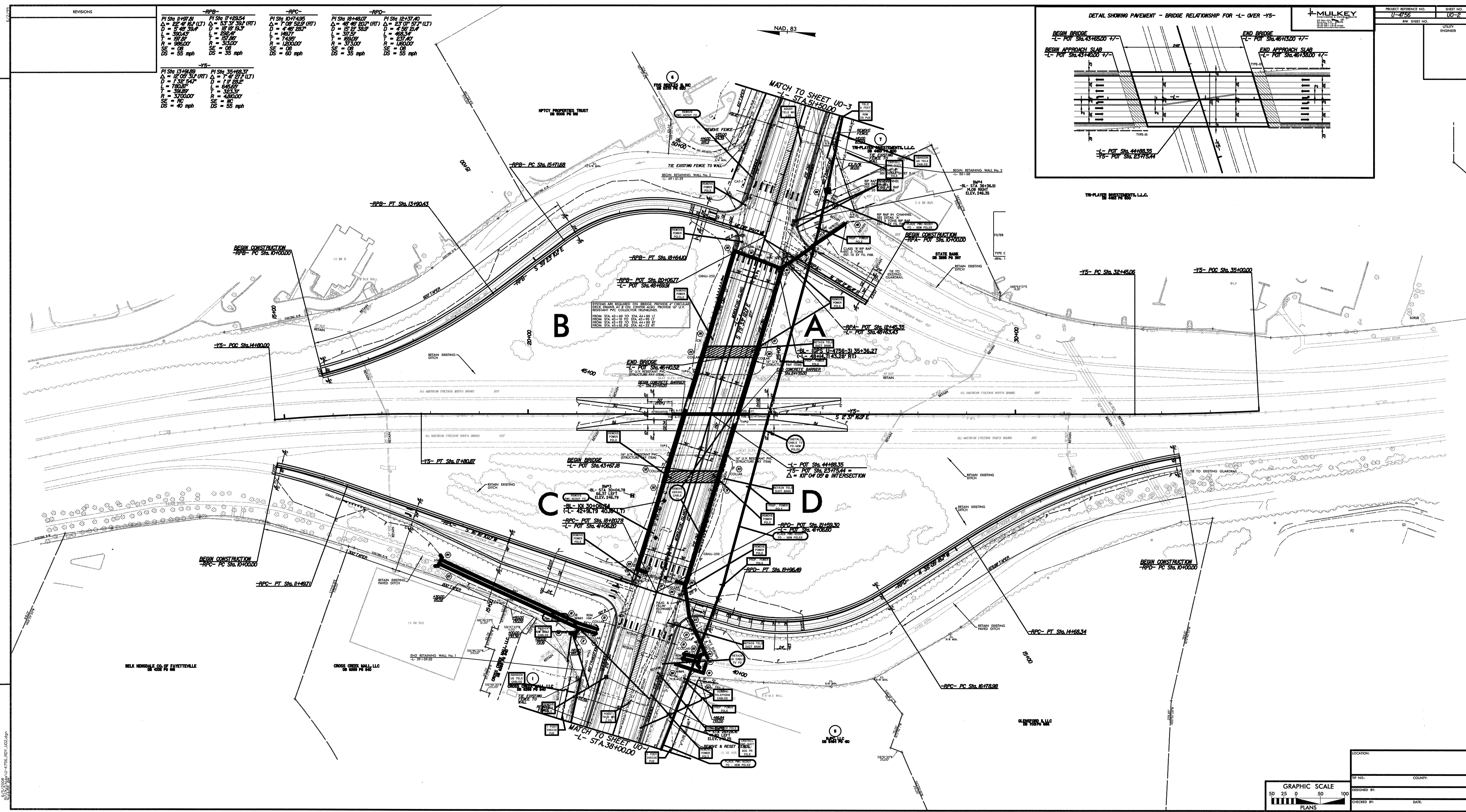
CROSS CREEK MALL, LLC
 DB 6269 PG 840

COOK, REECE JR.
 AND WIFE
 DB 7039 PG 640

3
 BULLARD FAMILY, LLC
 DB 5243 PG 152

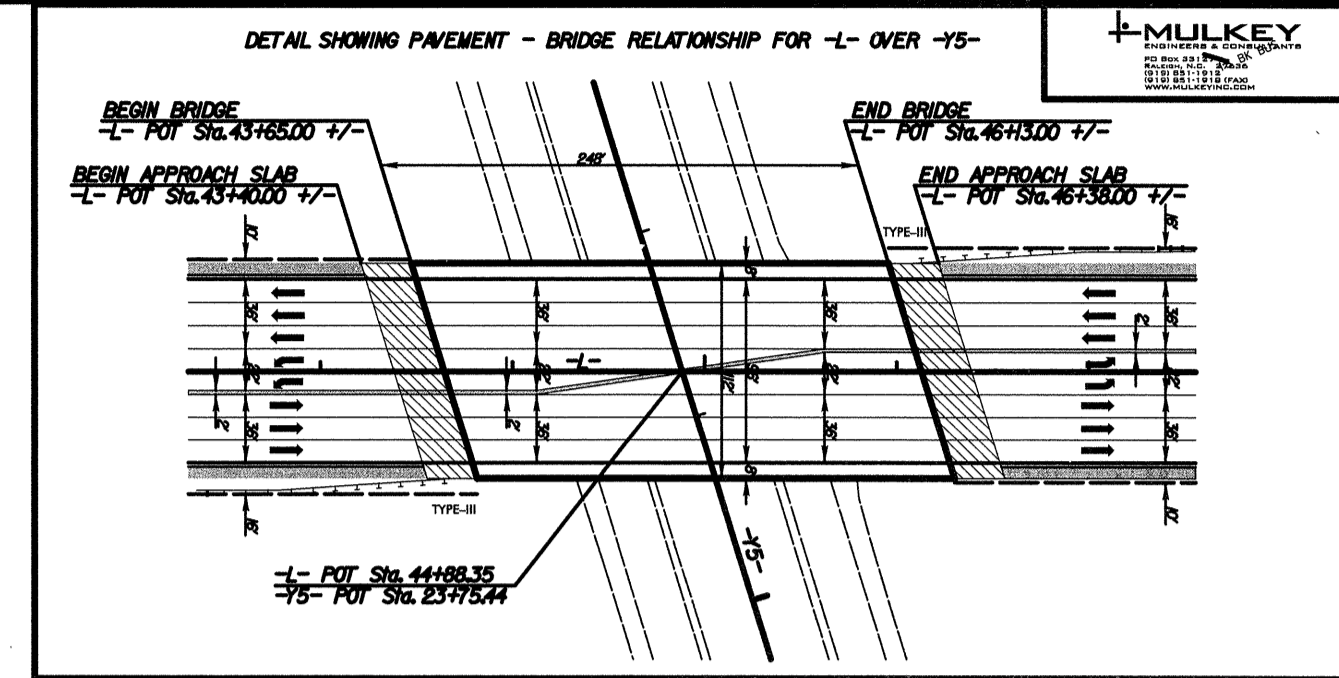
2
 JDN REALTY CORP.
 DB 4810 PG 238

5
 R/JPC, LLC
 DB 5464 PG 410



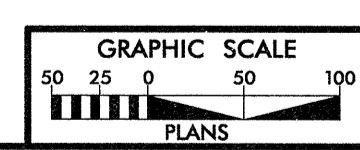
REVISIONS	
PI Sta 11497.81 Δ = 22° 41' 16.1" (LT) D = 549.334' L = 320.00' R = 380.00' SE = 08 DS = 55 mph	PI Sta 11497.81 Δ = 22° 41' 16.1" (LT) D = 549.334' L = 320.00' R = 380.00' SE = 08 DS = 55 mph
PI Sta 11497.81 Δ = 22° 41' 16.1" (LT) D = 549.334' L = 320.00' R = 380.00' SE = 08 DS = 55 mph	PI Sta 11497.81 Δ = 22° 41' 16.1" (LT) D = 549.334' L = 320.00' R = 380.00' SE = 08 DS = 55 mph

-RPP-		-RPC-		-RPP-		-RPP-	
PI Sta 11497.81 Δ = 22° 41' 16.1" (LT) D = 549.334' L = 320.00' R = 380.00' SE = 08 DS = 55 mph	PI Sta 11497.81 Δ = 22° 41' 16.1" (LT) D = 549.334' L = 320.00' R = 380.00' SE = 08 DS = 55 mph	PI Sta 11497.81 Δ = 22° 41' 16.1" (LT) D = 549.334' L = 320.00' R = 380.00' SE = 08 DS = 55 mph	PI Sta 11497.81 Δ = 22° 41' 16.1" (LT) D = 549.334' L = 320.00' R = 380.00' SE = 08 DS = 55 mph	PI Sta 11497.81 Δ = 22° 41' 16.1" (LT) D = 549.334' L = 320.00' R = 380.00' SE = 08 DS = 55 mph	PI Sta 11497.81 Δ = 22° 41' 16.1" (LT) D = 549.334' L = 320.00' R = 380.00' SE = 08 DS = 55 mph	PI Sta 11497.81 Δ = 22° 41' 16.1" (LT) D = 549.334' L = 320.00' R = 380.00' SE = 08 DS = 55 mph	PI Sta 11497.81 Δ = 22° 41' 16.1" (LT) D = 549.334' L = 320.00' R = 380.00' SE = 08 DS = 55 mph



PROJECT REFERENCE NO. U-755	SHEET NO. U0-2
DATE 11/15/11	UTILITY ENGINEER

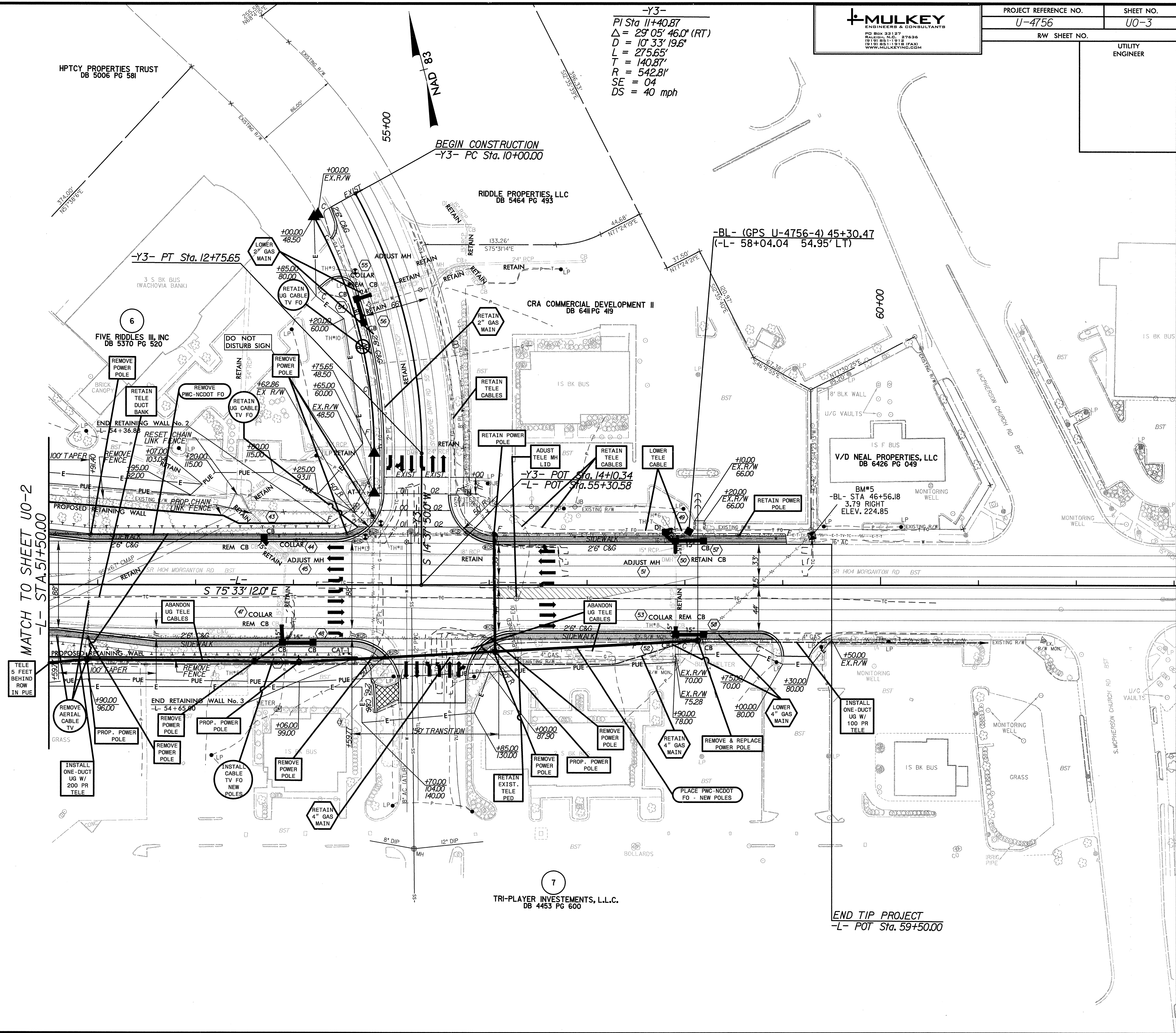
6-04-08 CHANGED LOCATION OF EMBARCO DUCT FROM 7' INSIDE PAVE TO 5' BEHIND ROW LINE.



LOCATION	DATE
DESIGNED BY	CHECKED BY
DATE	DATE



-Y3-
 PI Sta 11+40.87
 $\Delta = 29^{\circ} 05' 46.0''$ (RT)
 $D = 10^{\circ} 33' 19.6''$
 $L = 275.65'$
 $T = 140.87'$
 $R = 542.81'$
 $SE = 04$
 $DS = 40$ mph



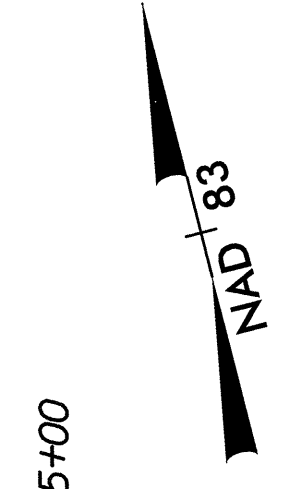
6-04-08 CHANGED LOCATION OF EMBARGO'S DUCT FROM 1' INSIDE PUE TO 5' BEHIND ROW LINE.

8/17/99

8/5/2008
 S:\Projects\U-4756.RDY.U03.dgn

MATCH TO SHEET U0-2
 -L- STA. 51+50.00

END TIP PROJECT
 -L- POT Sta. 59+50.00



BEGIN CONSTRUCTION
 -Y3- PC Sta. 10+00.00

TRI-PLAYER INVESTMENTS, L.L.C.
 DB 4453 PG 600

V/D NEAL PROPERTIES, LLC
 DB 6426 PG 049
 BM#5
 -BL- STA 46+56.8
 3.79 RIGHT
 ELEV. 224.85

-Y3- PT Sta. 12+75.65

-Y3- POT Sta. 14+10.34
 -L- POT Sta. 55+30.58

-BL- (GPS U-4756-4) 45+30.47
 (-L- 58+04.04 54.95' LT)

HPTCY PROPERTIES TRUST
 DB 5006 PG 581

RIDDLE PROPERTIES, LLC
 DB 5464 PG 493

CRA COMMERCIAL DEVELOPMENT II
 DB 6411 PG 419

FIVE RIDDLERS III, INC
 DB 5370 PG 520

REMOVED POWER POLE

REMOVED TELE DUCT BANK

REMOVED FENCE

REMOVED FENCE

REMOVED FENCE

REMOVED FENCE

REMOVED FENCE

REMOVED FENCE

REMOVED FENCE

REMOVED FENCE

REMOVED FENCE

REMOVED FENCE

REMOVED FENCE

REMOVED FENCE

REMOVED FENCE

REMOVED FENCE

REMOVED FENCE

REMOVED FENCE

REMOVED FENCE

REMOVED FENCE