

PHASING

PROJECT NOTES

STEP 1:

USING RSD 1101.02, SHEET 1 OF 9, AND SHEET TCP-6, INSTALL ADVANCE WORK ZONE WARNING SIGNS ON SR 1104 (PINE LOG RD.) AND SR 1107 (WEST GUM LOG RD.).

STEP 2:

IN A CONTINUOUS MANNER PERFORM THE FOLLOWING:

- 1) - USING RSD 1101.02, SHEET 1 OF 9, MODIFY PAVEMENT MARKINGS AT INTERSECTION OF SR 1104 & SR 1107, AND TIE TO EXISTING PAVEMENT MARKINGS AT -Y- STA.11+00+/- AND -L- STA.16+26+/- AS SHOWN ON SHEET TCP-4.
- 2) - USING RSD 1101.03, SHEETS 1 OF 9 & 2 OF 9, INSTALL TYPE III BARRICADES AND TEMPORARY DETOUR SIGNS. CLOSE SR 1104 FROM -L- STA.16+85+/- TO -L- STA. 22+50+/-, AND DETOUR TRAFFIC OFFSITE AS SHOWN ON SHEET TCP-3.

STEP 3:

- 1) USING RSD 1101.02, SHEET 1 OF 9, INSTALL TEMPORARY GUARDRAIL FROM -L- STA.15+77+/- TO -Y- STA.10+40+/- . SEE SHEET TCP-4.
 - 2) - AWAY FROM TRAFFIC, REMOVE EXISTING STRUCTURE, CONSTRUCT PROPOSED STRUCTURE AND ROADWAY UP TO BUT NOT INCLUDING THE FINAL LAYER OF SURFACE COURSE FROM -L- STA.16+85+/- TO -L- STA.22+50+/- . SEE ROADWAY PLANS, STRUCTURE PLANS, AND SHEET TCP-4.
- USING RSD 1101.02, SHEET 1 OF 9, PERFORM THE FOLLOWING:
- * BEGIN CONSTRUCTION UP TO BUT NOT INCLUDING THE FINAL LAYER OF SURFACE COURSE OF PROPOSED -L- FROM STA. 10+00+/- TO STA.16+85+/- . SEE SHEET TCP-4.
 - * BEGIN CONSTRUCTION OF PROPOSED DRAINAGE WITHIN THE PROJECT LIMITS. SEE HYDRO AND ROADWAY PLANS.

COMPLETE THE WORK REQUIRED IN STEP 4, WITHIN (14) FOURTEEN CONSECUTIVE CALENDAR DAYS. SEE INTERMEDIATE CONTRACT TIME FOR LIQUIDATED DAMAGES.

STEP 4:

- 1) USING RSD 1101.03, SHEET 1 OF 9, PERFORM THE FOLLOWING AT PROJECT LIMITS. DETOUR TRAFFIC OFFSITE AS SHOWN ON SHEET TCP-5:
 - PLACE TYPE III BARRICADES ON SR 1107 (WEST GUM LOG RD.) AND CLOSE ROAD TO TRAFFIC.
 - ADD TYPE III BARRICADES ON SR 1104 (PINE LOG RD.) AND CLOSE ROAD TO TRAFFIC.
 - INSTALL DETOUR SIGNS AS SHOWN ON SHEET TCP-5.
- 2) AWAY FROM TRAFFIC, PERFORM THE FOLLOWING:
 1. REMOVE TEMPORARY GUARDRAIL, INSTALLED IN STEP 3, FROM -L- STA.15+77+/- TO -Y- STA.10+40+/- .
 2. COMPLETE CONSTRUCTION UP TO BUT NOT INCLUDING FINAL SURFACE COURSE OF PROPOSED -L- FROM STA.10+00+/- TO STA. 22+50+/- AND PROPOSED -Y- FROM STA.10+00 TO STA.11+87+/- INCLUDING C & G ON -Y- LINE AND DRAINAGE WORK ON -L- & -Y- LINES.
 3. PLACE TEMPORARY PAVEMENT MARKINGS (PAINT) AND TIE TO EXISTING MARKINGS AT PROJECT LIMITS AS FOLLOWS:
 - * FROM -L- STA.10+00+/- TO -L- STA.22+50+/-
 - * FROM -Y- STA.10+00 TO -Y- STA.11+87+/- .
 4. REMOVE OFFSITE DETOUR SIGNS AND TEMPORARY TRAFFIC CONTROL DEVICES. OPEN -L- AND -Y- TO PROPOSED TRAFFIC PATTERN.

STEP 5:

USING RSD 1101.02, SHEET 1 OF 9, PERFORM THE FOLLOWING:

- 1) REMOVE EXISTING ROADWAY. SEE ROADWAY PLANS.
- 2) PLACE FINAL LAYER OF SURFACE COURSE AND FINAL PAVEMENT MARKINGS (PAINT) ON -L- (SR 1104 PINE LOG RD.) AND -Y- (SR 1107 WEST GUM LOG RD.), AS SHOWN ON SHEET PM-1.
- 3) REMOVE ALL TEMPORARY SIGNS INCLUDING ADVANCE WORK ZONE SIGNS AND ALL TRAFFIC CONTROL DEVICES.

CHANGES MAY BE REQUIRED WHEN PHYSICAL DIMENSIONS IN THE DETAIL DRAWINGS, STANDARD DETAILS AND ROADWAY DETAILS ARE NOT ATTAINABLE TO MEET FIELD CONDITIONS, OR RESULT IN DUPLICATE, OR UNDESIRED OVERLAPPING OF DEVICES. MODIFICATION MAY INCLUDE: MOVING, SUPPLEMENTING, COVERING OR REMOVAL OF DEVICES, AS DIRECTED BY THE ENGINEER.

THE FOLLOWING PROJECT NOTES APPLY AT ALL TIMES FOR THE DURATION OF THE CONSTRUCTION PROJECT, EXCEPT WHEN OTHERWISE NOTED IN THE PLAN, OR DIRECTED BY THE ENGINEER.

LANE AND SHOULDER CLOSURE REQUIREMENTS

- A) REMOVE LANE CLOSURE DEVICES FROM THE LANE WHEN WORK IS NOT BEING PERFORMED BEHIND THE LANE CLOSURE OR WHEN A LANE CLOSURE IS NO LONGER NEEDED, OR AS DIRECTED BY THE ENGINEER.
- B) WHEN PERSONNEL AND/OR EQUIPMENT ARE WORKING WITHIN 15 FT OF AN OPEN TRAVEL LANE, CLOSE THE NEAREST OPEN SHOULDER USING ROADWAY STANDARD DRAWING NO.1101.04 UNLESS THE WORK AREA IS PROTECTED BY BARRIER OR GUARDRAIL OR A LANE CLOSURE IS INSTALLED.
- C) WHEN PERSONNEL AND/OR EQUIPMENT ARE WORKING ON THE SHOULDER ADJACENT TO AN UNDIVIDED FACILITY AND WITHIN 5 FT OF AN OPEN TRAVEL LANE, CLOSE THE NEAREST OPEN TRAVEL LANE USING ROADWAY STANDARD DRAWING NO.1101.02 UNLESS THE WORK AREA IS PROTECTED BY BARRIER OR GUARDRAIL.
- D) WHEN PERSONNEL AND/OR EQUIPMENT ARE WORKING WITHIN A LANE OF TRAVEL OF AN UNDIVIDED OR DIVIDED FACILITY, CLOSE THE LANE ACCORDING TO THE TRAFFIC CONTROL PLANS, ROADWAY STANDARD DRAWINGS OR AS DIRECTED BY THE ENGINEER. CONDUCT THE WORK SO THAT ALL PERSONNEL AND/OR EQUIPMENT REMAIN WITHIN THE CLOSED TRAVEL LANE.
- E) DO NOT WORK SIMULTANEOUSLY WITHIN 15 FT ON BOTH SIDES OF AN OPEN TRAVELWAY, RAMP OR LOOP WITHIN THE SAME LOCATION UNLESS PROTECTED WITH GUARDRAIL OR BARRIER.
- F) DO NOT INSTALL MORE THAN ONE SIMULTANEOUS LANE CLOSURES, IN ANY ONE DIRECTION, ON SR 1104 (PINE LOG RD.) AND SR 1107 (WEST GUM LOG RD.).

PAVEMENT EDGE DROP OFF REQUIREMENTS

- G) BACKFILL AT A 6:1 SLOPE UP TO THE EDGE AND ELEVATION OF EXISTING PAVEMENT IN AREAS ADJACENT TO AN OPENED TRAVEL LANE THAT HAS AN EDGE OF PAVEMENT DROP-OFF AS FOLLOWS:
 - BACKFILL DROP-OFFS THAT EXCEED 2 INCHES ON ROADWAYS WITH POSTED SPEED LIMITS OF 45 MPH OR GREATER.
 - BACKFILL DROP-OFFS THAT EXCEED 3 INCHES ON ROADWAYS WITH POSTED SPEED LIMITS LESS THAN 45 MPH.
 - BACKFILL WITH SUITABLE COMPACTED MATERIAL, AS APPROVED BY THE ENGINEER, AT NO EXPENSE TO THE DEPARTMENT.

TRAFFIC PATTERN ALTERATIONS

- H) NOTIFY THE ENGINEER TWENTY ONE (21) CALENDAR DAYS PRIOR TO ANY TRAFFIC PATTERN ALTERATION.

SIGNING

- I) INSTALL ADVANCE WORK ZONE WARNING SIGNS WHEN WORK IS WITHIN 40 FT FROM THE EDGE OF TRAVEL LANE AND NO MORE THAN (3) DAYS PRIOR TO THE BEGINNING OF CONSTRUCTION.
 - J) STATE FORCES WILL BE RESPONSIBLE FOR PERMANENT SIGNING.
 - K) PROVIDE DETOUR SIGNING WITHIN AND OFF THE PROJECT LIMITS.
 - L) COVER OR REMOVE ALL DETOUR SIGNS WITHIN AND OFF THE PROJECT LIMITS WHEN DETOUR IS NOT IN OPERATION.
 - M) ENSURE ALL NECESSARY SIGNING IS IN PLACE PRIOR TO ALTERING ANY TRAFFIC PATTERN.
- #### TRAFFIC CONTROL DEVICES
- N) SPACE CHANNELIZING DEVICES IN WORK AREAS NO GREATER THAN TWICE THE POSTED SPEED LIMIT (MPH), EXCEPT 10 FT ON-CENTER IN RADII, AND 3 FT OFF THE EDGE OF AN OPEN TRAVELWAY, WHEN LANE CLOSURES ARE NOT IN EFFECT. WHEN SKINNY DRUMS ARE ALLOWED, REFER TO SECTION 1180 OF STANDARD SPECIFICATIONS FOR ROADS AND STRUCTURES OR AS SHOWN IN THE PLANS.
 - O) PLACE TYPE III BARRICADES, WITH "ROAD CLOSED" SIGN R11-2 ATTACHED, OF SUFFICIENT LENGTH TO CLOSE ENTIRE ROADWAY.
 - P) PLACE ADDITIONAL SETS OF THREE CHANNELIZING DEVICES PERPENDICULAR TO THE EDGE OF TRAVELWAY ON 500 FT CENTERS WHEN UNOPENED LANES ARE CLOSED TO TRAFFIC.

PAVEMENT MARKINGS AND MARKERS

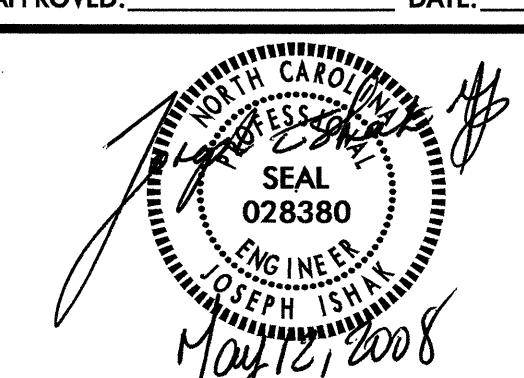
- Q) INSTALL FINAL PAVEMENT MARKINGS ON THE FINAL SURFACE AS FOLLOWS:

ROAD NAME	MARKING	MARKER
SR 1104 (PINE LOG RD.)	PAINT	N/A
SR 1107 (WEST GUM LOG RD.)	PAINT	N/A

- R) INSTALL TEMPORARY PAVEMENT MARKINGS MARKERS ON INTERIM LAYERS OF PAVEMENT AS FOLLOWS:

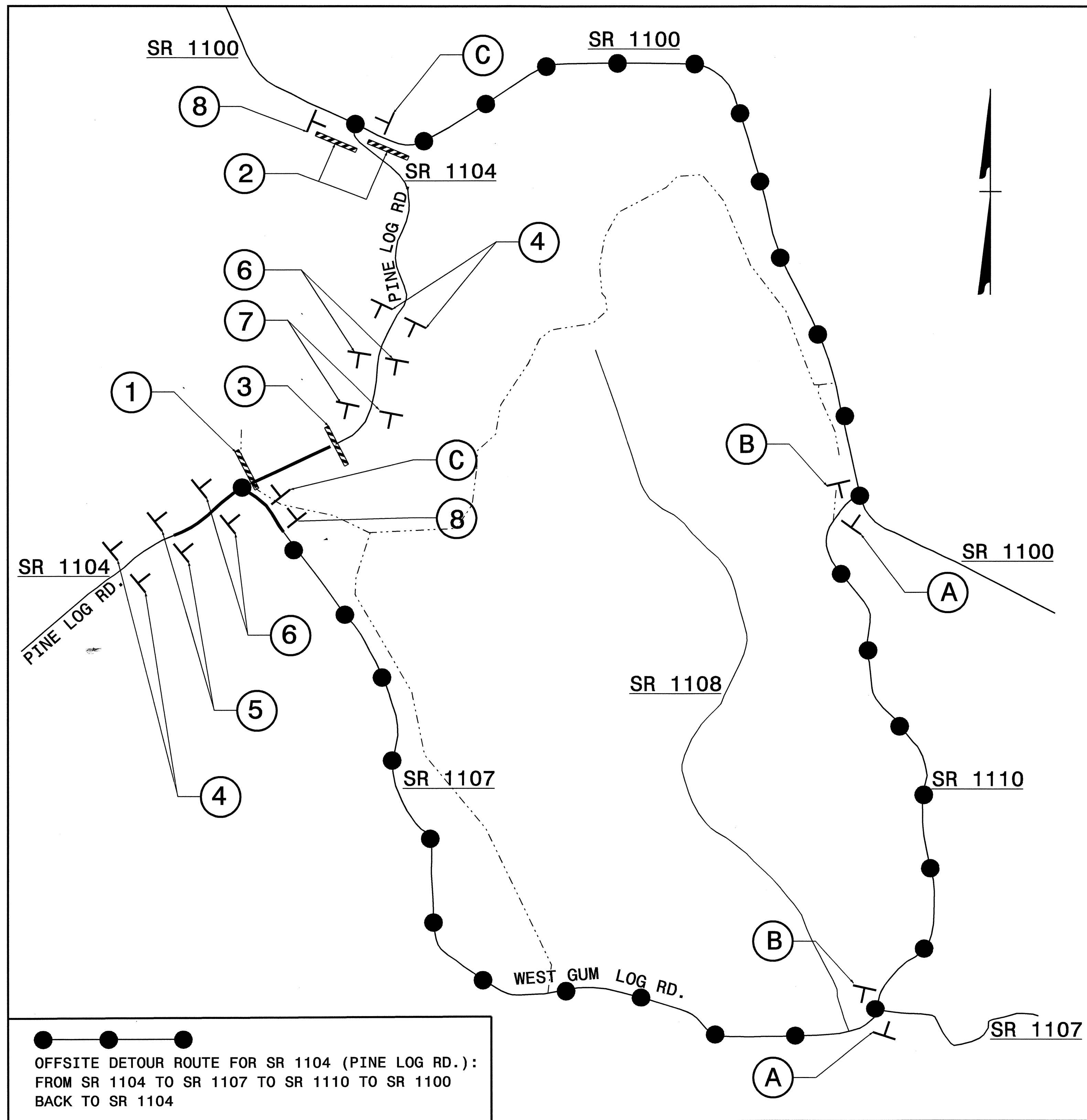
ROAD NAME	MARKING	MARKER
SR 1104 (PINE LOG RD.)	PAINT	N/A
SR 1107 (WEST GUM LOG RD.)	PAINT	N/A

- S) PLACE TWO APPLICATIONS OF PAINT PAVEMENT MARKINGS ON THE FINAL WEARING SURFACE. PLACE THE SECOND APPLICATION OF PAINT UPON SUFFICIENT DRYING TIME OF THE FIRST.
- T) PLACE ONE APPLICATION OF PAINT FOR TEMPORARY TRAFFIC PATTERNS. PLACE A SECOND APPLICATION OF PAINT SIX (6) MONTHS AFTER THE INITIAL APPLICATION AND EVERY SIX MONTHS AS DIRECTED BY THE ENGINEER.
- U) TIE PROPOSED PAVEMENT MARKING LINES TO EXISTING PAVEMENT MARKING LINES.

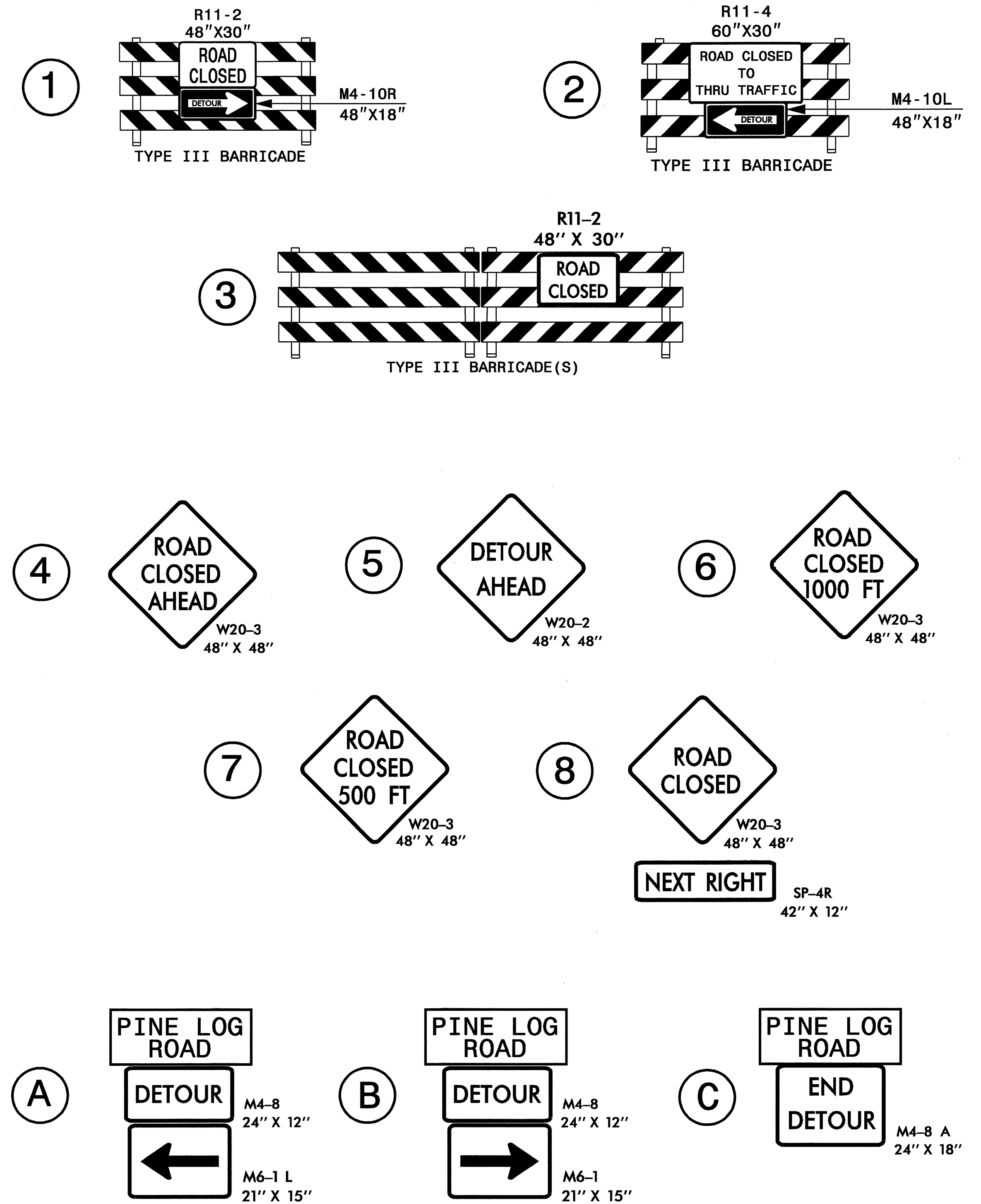
APPROVED: _____ DATE: _____ 	PHASING AND PROJECT NOTES								
SCALE: NONE DATE: 3-08 DWG. BY: HAL DESIGN BY: HAL REVIEWED BY: JI	<table border="1" style="width: 100%; border-collapse: collapse;"> <thead> <tr> <th colspan="2">REVISIONS</th> </tr> </thead> <tbody> <tr> <td style="width: 50%; height: 20px;"> </td> <td style="width: 50%;"> </td> </tr> <tr> <td style="height: 20px;"> </td> <td> </td> </tr> <tr> <td style="height: 20px;"> </td> <td> </td> </tr> </tbody> </table>	REVISIONS							
REVISIONS									

I2-MAY-2008 13:37 \\dot\dfs\root\01\proj\h\pp\projects-b\4466\traffic\trafficcontrol\tcp\lb-4466-fe_top_tcp-2.dgn halawandos AT WZTC224250

VICINITY MAP: CLAY COUNTY



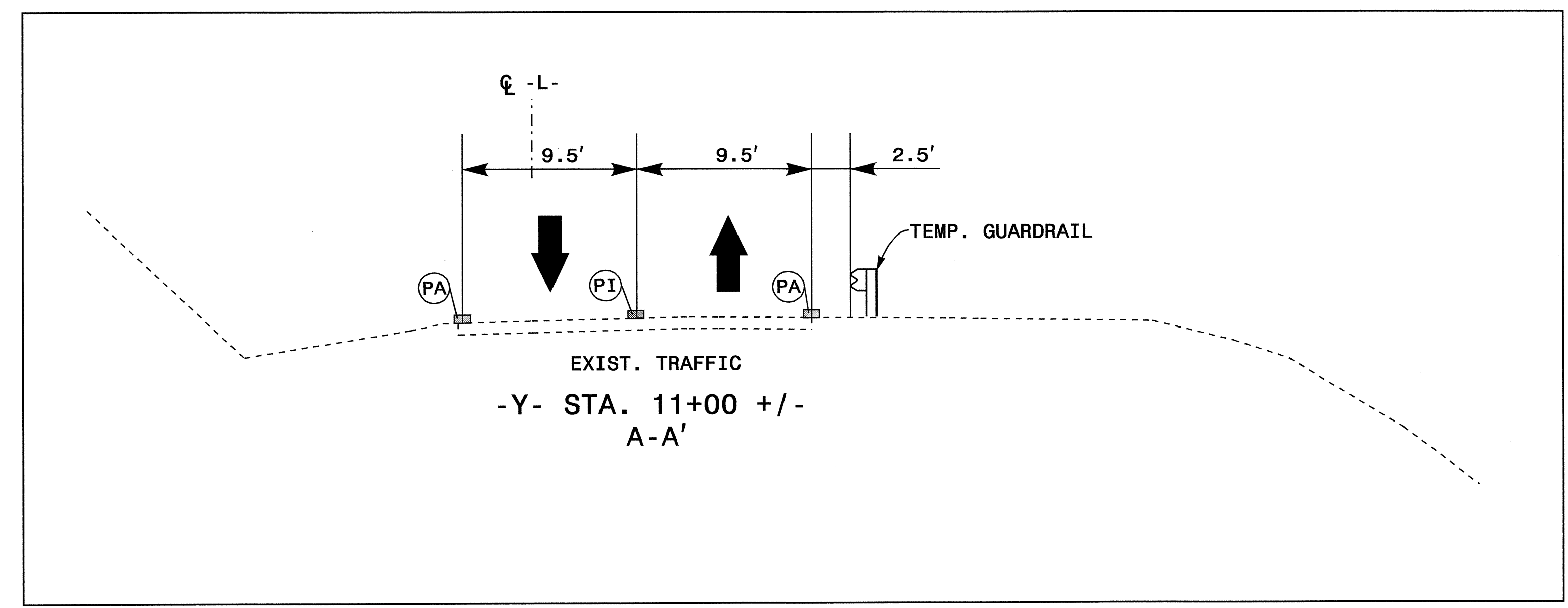
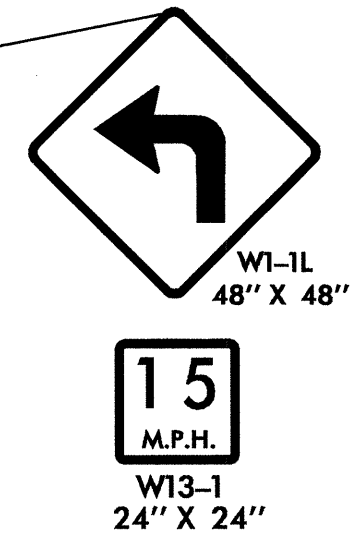
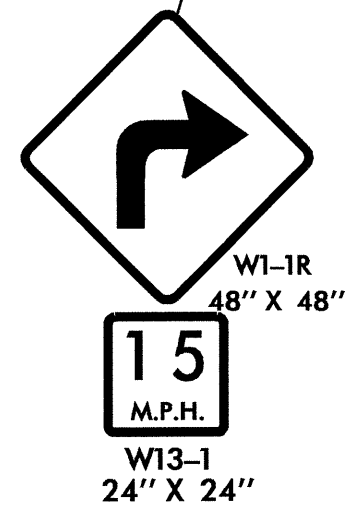
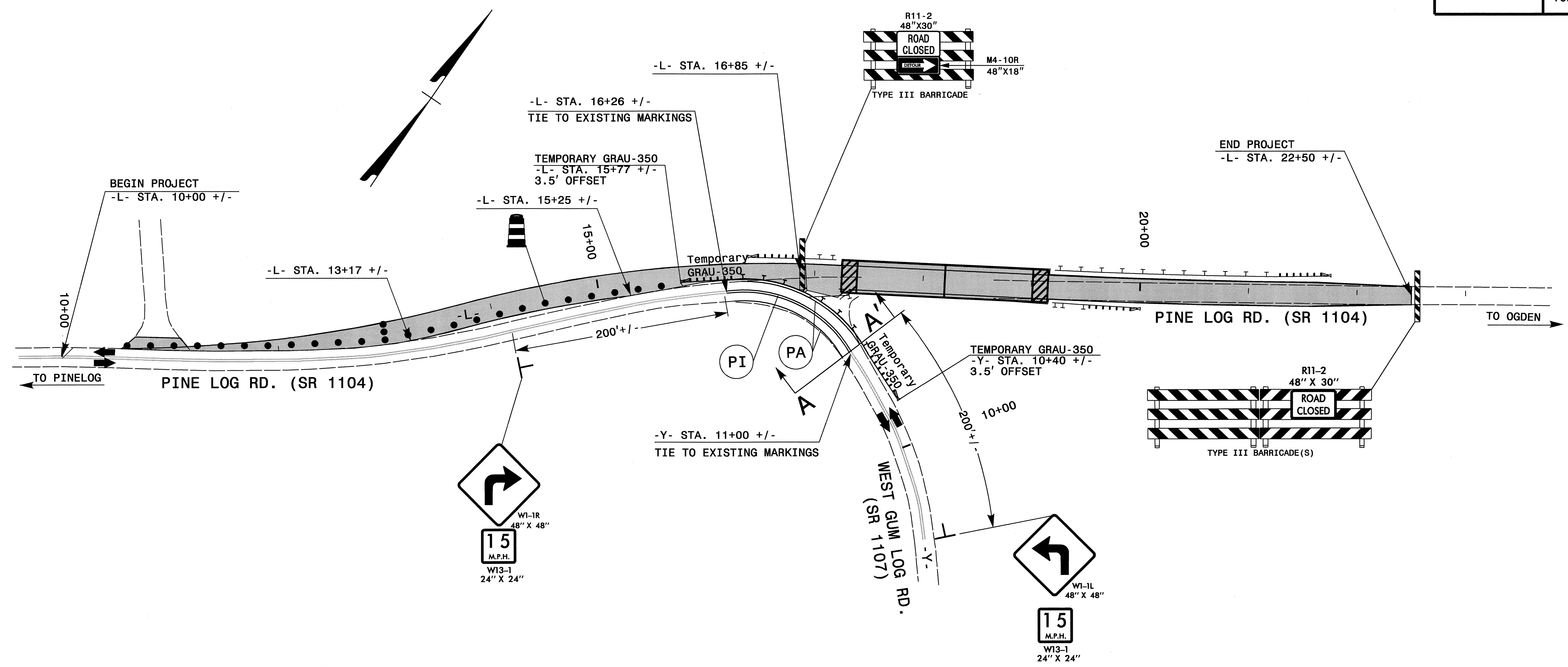
●—●—●
 OFFSITE DETOUR ROUTE FOR SR 1104 (PINE LOG RD.):
 FROM SR 1104 TO SR 1107 TO SR 1110 TO SR 1100
 BACK TO SR 1104



NOTES:
 1. REFER TO RSD 1101.03, SHEETS 1 OF 9 AND 2 OF 9, FOR SIGN SPACING DISTANCES.
 2. SEE SHEET SD-1 FOR TEMPORARY SIGN DESIGN.

APPROVED: _____ DATE: _____	DETOUR I		REVISIONS	
			SCALE: NONE	
	DWG. BY: HAL	REVISIONS		
	DESIGN BY: HAL	REVISIONS		
REVIEWED BY: JI	REVISIONS	CADD FILE		

31-MAR-2008 09:36
 \dot\dfsroot\proj\1101\projects\b4466\trafficoontrol\top\B-4466_TC_TCP_top-3.dgn
 halawandos AT WZ1C224250

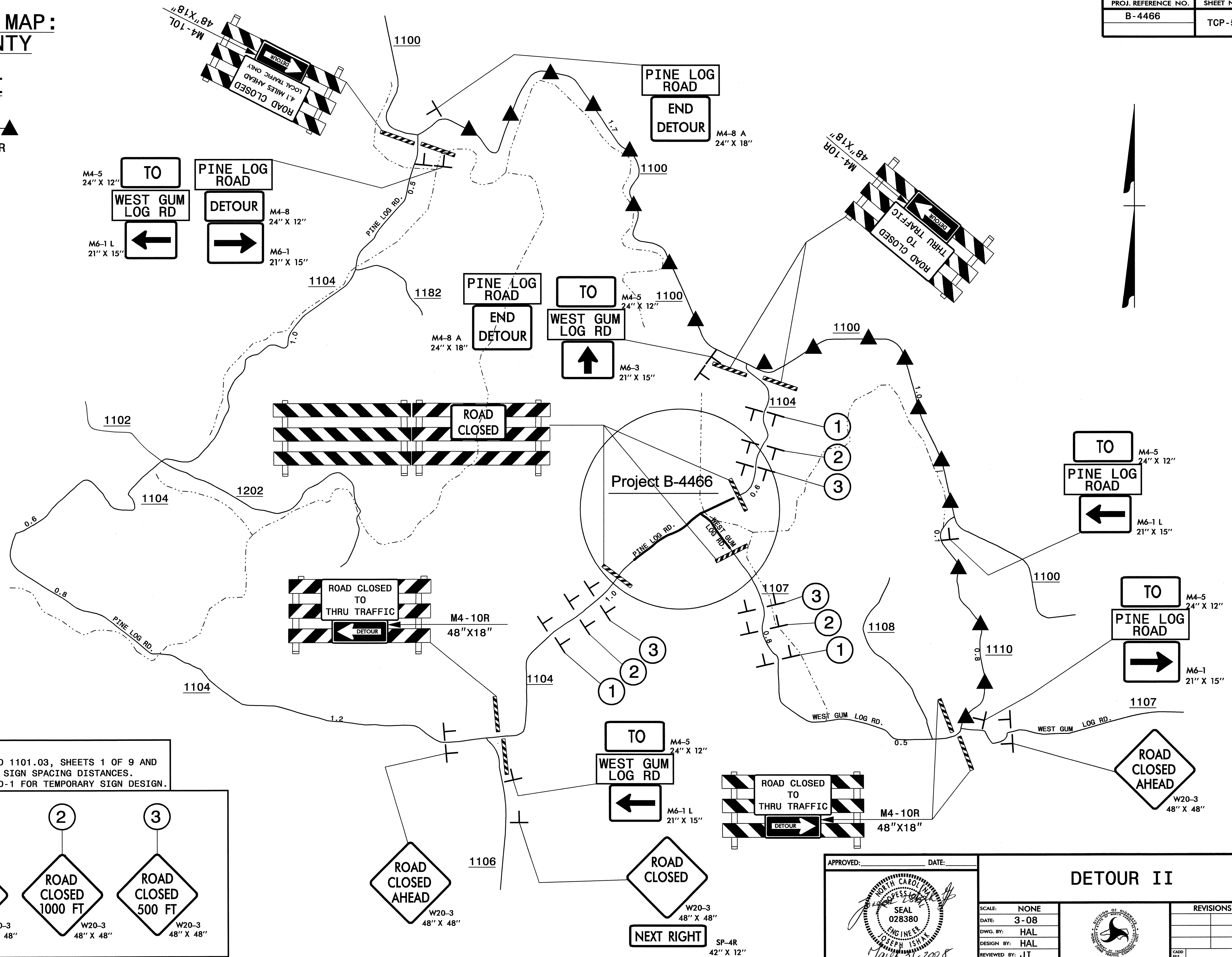
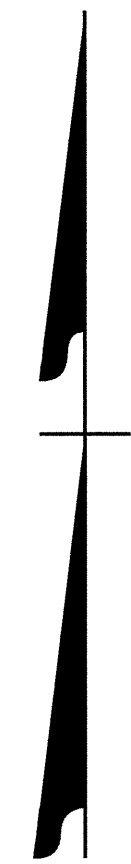


APPROVED: _____ DATE: _____	DETAIL	
SCALE: NONE		REVISIONS
DATE: 03/08		
DWG. BY: HAL		
DESIGN BY: HAL		
REVIEWED BY: JI		CADD FILE

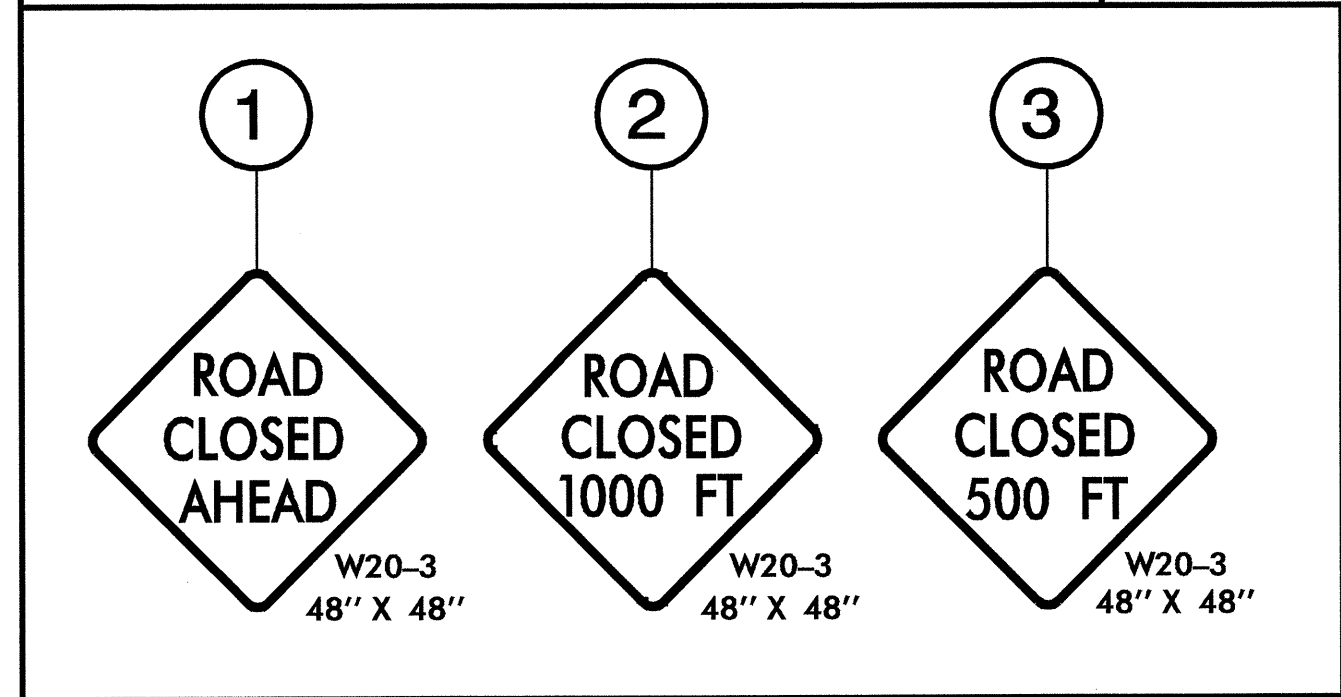
March 31, 2008

3-MAR-2008 09:35
 \\dot\dfsroot\p\proj\tr\projects\b\4466\traffic\trafficcontrol\top\B-4466_TC_TCP_top-4.dgn
 halawandos AT WZ1C224250

**VICINITY MAP:
CLAY COUNTY
B-4466
DETOUR II**



- NOTES:**
- REFER TO RSD 1101.03, SHEETS 1 OF 9 AND 2 OF 9, FOR SIGN SPACING DISTANCES.
 - SEE SHEET SD-1 FOR TEMPORARY SIGN DESIGN.



APPROVED: _____ DATE: _____

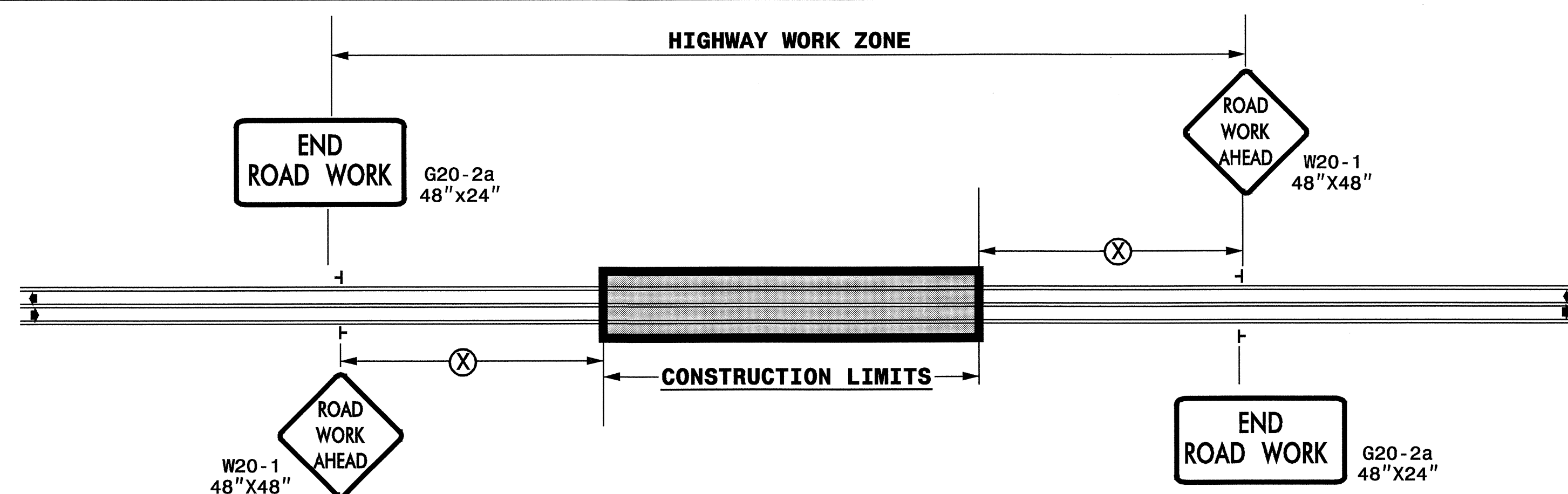
SEAL
028380
ENGINEER
JOSEPH ISHAK
NORTH CAROLINA

Hal 3-8-08

DETOUR II			REVISIONS	
SCALE:	NONE			
DATE:	3-08			
DWG. BY:	HAL			
DESIGN BY:	HAL			
REVIEWED BY:	JI			
CAD FILE				

3:1 MAR 2008 09:35
 I:\Projects\B-4466\Drawings\T-5.dwg
 Project: B-4466
 Drawing: T-5
 Author: JI
 Date: 3/8/08

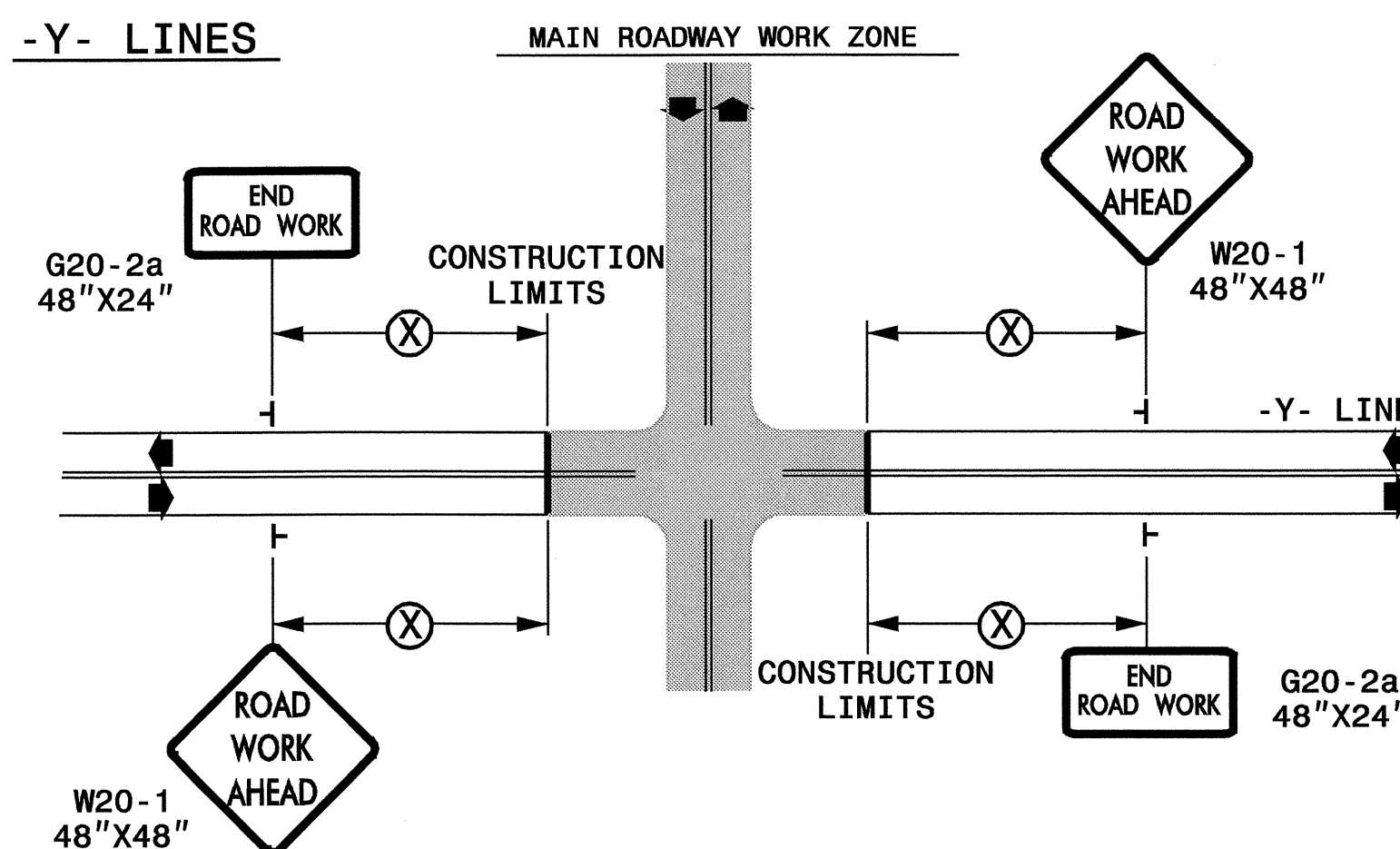
TWO-WAY UNDIVIDED ** (L-LINES)



POSTED SPEED LIMIT (M.P.H.)	RECOMMENDED MINIMUM SIGN SPACING
≤ 50	500'
≥ 55	1000'

STATE OF NORTH CAROLINA
DEPT. OF TRANSPORTATION
DIVISION OF HIGHWAYS
RALEIGH, N.C.

ROADWAYS INTERSECTING ALONG 2 WAY UNDIVIDED WORK ZONE (Y-LINES)



DETAIL DRAWING FOR
TWO-WAY UNDIVIDED
WORK ZONE WARNING SIGNS

GENERAL NOTES

- USE FLUORESCENT ORANGE SHEETING (TYPE VII OR HIGHER) ON ALL ADVANCED WORK ZONE SIGNS.
- DO NOT INSTALL ADVANCE WARNING SIGNS MORE THAN 3 DAYS PRIOR TO BEGINNING OF WORK.
- SIGNS SHOWN ARE REQUIRED FOR WORK ZONES THAT WILL REMAIN IN EFFECT OVERNIGHT. FOR SHORT-TERM DAILY MAINTENANCE TYPE OPERATIONS, THIS SIGNING APPLICATION IS OPTIONAL; MAY USE ONLY APPLICABLE ROADWAY STANDARD DRAWINGS INSTEAD. HOWEVER, IF THIS SIGNING APPLICATION IS USED, SIGNS MAY BE PORTABLE MOUNTED.
- ALL SIGN SPACING DIMENSIONS ARE APPROXIMATE, FIELD ADJUST AS NECESSARY OR AS DIRECTED.
- USE 3LB STEEL U-CHANNEL POST OR 4" X 4" WOOD POST FOR ALL WORK ZONE SIGNS. 3LB STEEL U-CHANNEL POSTS MUST MEET THE REQUIREMENTS OF STANDARD SPECIFICATION SECTION 1094-1(B), MAY BE GALVANIZED STEEL, OR MAY BE PAINTED GREEN BY THE POST MANUFACTURER. SQUARE STEEL TUBING POSTS HAVING EQUIVALENT STRENGTH OF THE 3 LB STEEL U-CHANNEL POST ARE ALSO ACCEPTABLE FOR USE. ERECT SIGNS PER ROADWAY STANDARD DRAWING 1110.01. PAYMENT FOR WOOD POSTS, 3LB STEEL U-CHANNEL AND SQUARE STEEL TUBING POSTS WITH SIGNS WILL BE MADE ACCORDING TO STANDARD SPECIFICATION "WORK ZONE SIGNS" SECTION 1110.
- WHEN NECESSARY, USE SPLICING IN ACCORDANCE WITH ROADWAY STANDARD DRAWING NO. 1110.01. REMOVE ENTIRE POST WHEN REMOVING SIGNS WITH SPLICED POSTS.
- DO NOT BACK BRACE SIGN SUPPORTS.
- ** TWO-WAY UNDIVIDED ADVANCE WARNING SIGN CONFIGURATION MAY BE USED ON URBAN MULTI-LANE FACILITIES WHERE CONDITIONS LIMIT THE USE OF DUAL MOUNTED SIGNS AS DETERMINED BY THE ENGINEER.

LEGEND

- └ STATIONARY SIGN
- ◀ DIRECTION OF TRAFFIC FLOW

SHEET 1 OF 1

APPROVED: _____ DATE: _____	DETAIL DRAWING FOR TWO-WAY UNDIVIDED AND URBAN FREEWAYS ADVANCED WORK ZONE WARNING SIGNS	
	SCALE: NONE	REVISIONS
	DATE: 3-08	7-98 10/01
	DWG. BY: HAL	10-98 03/04
	DESIGN BY: HAL	01/01 11/04
REVIEWED BY: JI	CADD FILE	