

COMPUTED BY: MRT DATE: 2-6-2008
 CHECKED BY: GSD DATE: 4-5-2008

DIVISION OF HIGHWAYS
 STATE OF NORTH CAROLINA
GUARDRAIL SUMMARY

PROJECT REFERENCE NO. R-4425 SHEET NO. LEE-2

"N" = DISTANCE FROM EDGE OF LANE TO FACE OF GUARDRAIL
 TOTAL SHOULDER WIDTH = DISTANCE FROM EDGE OF TRAVEL LANE TO SHOULDER BREAK POINT.
 FLARE LENGTH = DISTANCE FROM LAST SECTION OF PARALLEL GUARDRAIL TO END OF GUARDRAIL
 W = TOTAL WIDTH OF FLARE FROM BEGIN

G = GATING IMPACT ATTENUATOR TYPE 350
 NG = NON-GATING IMPACT ATTENUATOR TYPE 350

Location (LEE Co.)	Field Reference	LENGTH				"N" DIST. FROM E.O.L.	TOTAL SHOULDER WIDTH	FLARE LENGTH		W		ANCHORS							IMPACT ATTENUATOR TYPE 350		REPLACE OFFSET BLOCKS	REMOVE EXISTING GUARDRAIL	REMOVE & STOCKPILE EXISTING GUARDRAIL	REMARKS	
		STRAIGHT	SHOP CURVED	TRIPLE CORRUGATED				APPROACH END	TRAILING END	APPROACH END	TRAILING END	Type III MOD	B-77	B-83	M-350	GRAU 350	CAT-1	AT-1							G
US 1 NB																									
#36	L 1 N 41																								
#43	US1Ln50																							12.5	Replace Struct. Anchor Unit and End Unit on Outside Rail
#37	US1Ln51																							12.5	Replace End Unit on Outside Rail
#38																								12.5	Replace End Units on Outside Rail
#39	US1Ln53																							12.5	Replace End Unit on Outside Rail
Outside Approach																								12.5	Replace Struct. Anchor Unit and End Unit
Median Approach																									Replace Struct. Anchor Unit
Median Trail																									Replace Struct. Anchor Unit
#40	US1Ln54	30																						42.5	Replace End Units on Outside Rail, Damaged Rail
#41	US1Ln55																							12.5	Replace End Units on Outside Rail
#42	US1Ln56																							12.5	Replace End Units on Outside Rail
#44	US1Ln57																							12.5	Replace End Units on Outside Rail
#45	US1Ln58																							12.5	Replace End Units on Outside Rail
#46	US1Ln59																							12.5	Replace End Unit on Outside Rail
#47	US1Ln60																							12.5	Replace SAU and End Unit on Outside Rail
#48	US1Ln61																					2		12.5	Replace End Unit on Outside Rail
#49	US1Ln62																					3		12.5	Replace End Units on Outside Rail
#50	US1Ln63																					2		12.5	Replace End Unit on Outside Rail
#51	US1Ln64																					3		12.5	Replace End Unit on Outside Rail
#53	US1Ln66																					30		12.5	Replace End Unit on Outside Rail
#54	US1Ln66																								
Outside Approach																								12.5	Replace Struct. Anchor Unit and End Unit on Outside Rail
Median Approach																									Replace Structural Anchor Unit
Median Trail																									Replace Structural Anchor Unit
US 1 SB																									
#56	US1Ls01																								
Outside Trail		50																						62.5	Replace damaged GR and Structural Anchor Units
Median Trail																								31.25	
#57	US1Ls02	50																						62.5	Replace damaged GR and End Unit on Outside Rail
#58	US1Ls03																								Replace Damaged End Unit on trail
#60	US1Ls05																							12.5	Replace End Unit on Outside Rail
#62	US1Ls07																							12.5	Replace SAU and End Unit on Outside Rail
#64	US1Ls09																							12.5	Replace End Units on Outside Rail
#68	US1Ls13																								
Outside Approach																								12.5	Replace Struct. Anchor Unit and End Unit on Outside Rail
Median Approach																									Replace Structural Anchor Unit
Median Trail																									Replace Structural Anchor Unit
#69	US1Ls14																							12.5	Replace End Unit on Outside Rail
#72	SB opposite #36																								
US 1 Total		130	0																					40	473.75
LEE COUNTY																									
US 421		625	0																					0	993.75
NC 87		50	0																					5	262.5
US1		130	0																					40	473.75
LEE CO. GRAND TOTAL		805	0																					45	1730

PROJECT REFERENCE NO. R-4425	SHEET NO. LEE-3
RW SHEET NO.	
DIVISION 8 DDC ENGINEER	

8/17/99

REVISIONS



SEE SHEET LEE-4

18-APR-2008 13:43
D:\FD\KR-4425\Lee\18888521-1.dgn
Greg S. Davis

8/17/99

REVISIONS

18-APR-2008 13:43
D:\FDY\R-4425\Lee\selus421-2.dgn

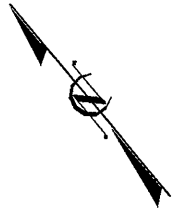
PROJECT REFERENCE NO. R-4425	SHEET NO. LEE-4
RW SHEET NO.	
DIVISION 8 DDC ENGINEER	



SEE SHEET LEE-3

HARNETT CO.

PROJECT REFERENCE NO. R-4425	SHEET NO. LEE-5
RW SHEET NO.	
DIVISION 8 DDC ENGINEER	



DEEP RIVER CHATHAM CO.

421

14

16

17

13

12

18

11

19

20

Cummock
Methodist
Cummock
Methodist
WEST SANFORD
RURAL FIRE DEPT

St. Paul
AME
2408
Cotton

Cummock
Baptist

Cummock
1400

1384

Forewood
Community
Chapel

.58

Park

1384

.44

1325

Springs

Delmonte

Rd.

Cool

Rd.

Prairie

140

Charles
Ct.

1325

SEE SHEET LEE-6

REVISIONS

8/17/99

B:\APR-2008\1343
D:\RDYAR-4425\Lee\US21-4.dgn

PROJECT REFERENCE NO. R-4425	SHEET NO. LEE-6
RW SHEET NO.	
DIVISION 8 DDC ENGINEER	



SEE SHEET LEE-5

REVISIONS

18-APR-2008 13:43
 D:\FDY\1425\Lee\LeeUS421-3.dgn
 8/17/99

8/17/99

REVISIONS

18-APR-2008 13:43
D:\FDYR\4425\Lee\280887-5.dgn
gcb



SEE SHEET LEE-8

PROJECT REFERENCE NO. R-4425	SHEET NO. LEE-7
DIVISION 8 DDC ENGINEER	

8/17/99

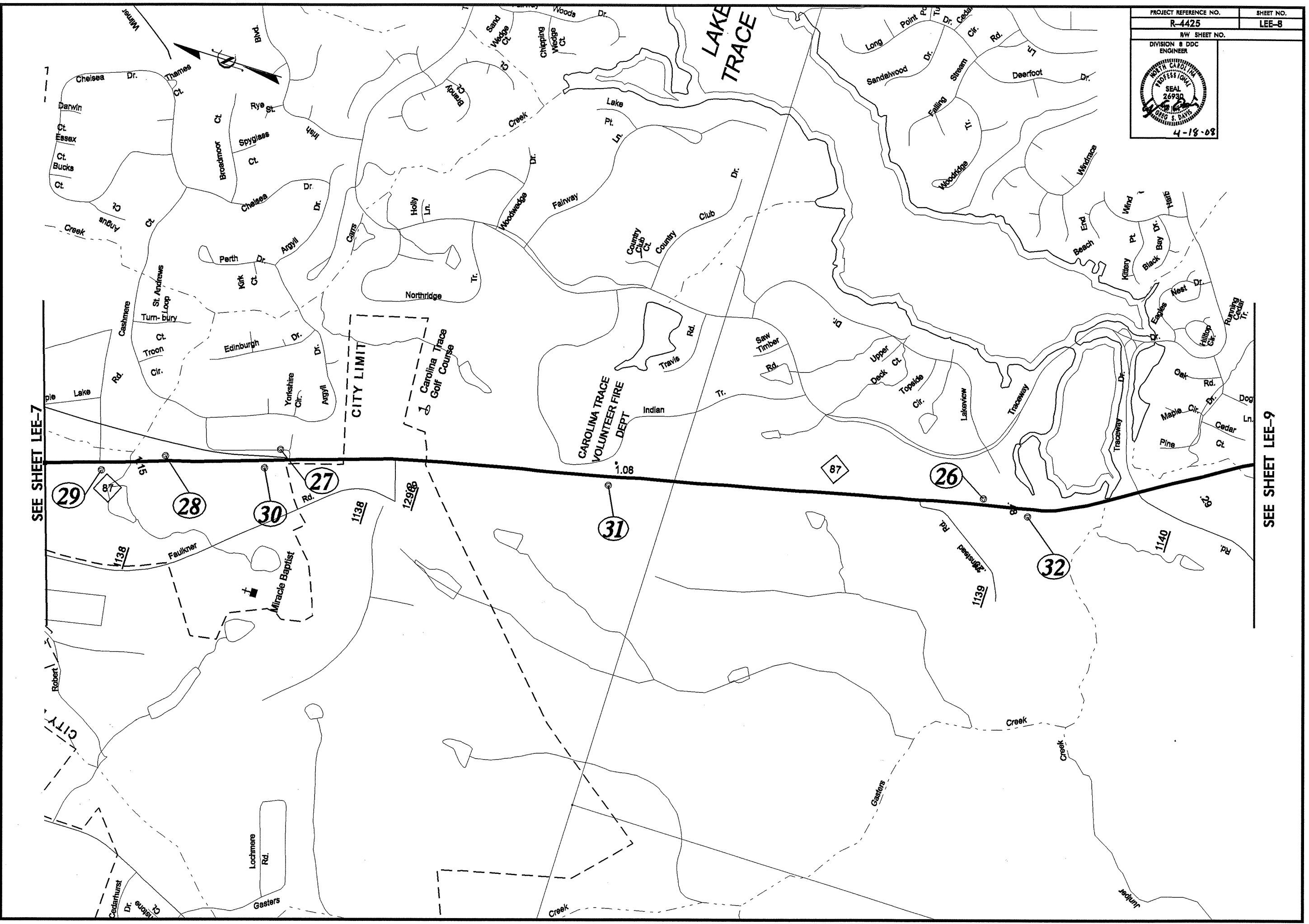
PROJECT REFERENCE NO.	SHEET NO.
R-4425	LEE-8
RW SHEET NO.	
DIVISION 8 DDC ENGINEER	


REVISIONS

SEE SHEET LEE-7

SEE SHEET LEE-9

18-APR-2008 13:43
 D:\FDYR\4425\Lee\1808087-6.dgn
 1808087-6.dgn

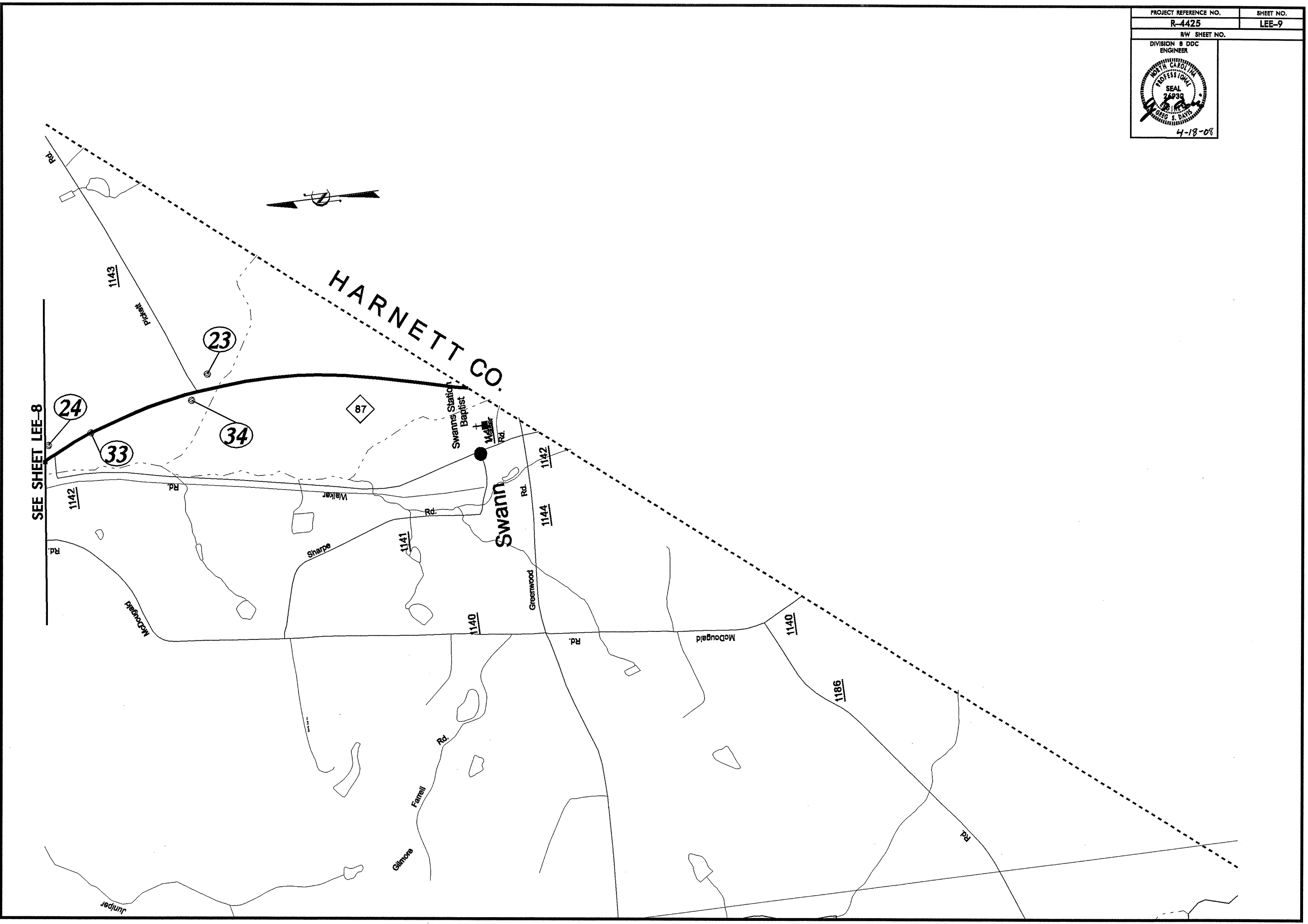


PROJECT REFERENCE NO. R-4425	SHEET NO. LEE-9
RW SHEET NO.	
DIVISION 8 DDC ENGINEER	
	

8/17/95

REVISIONS

18-APR-2008 13:43
D:\RDY\18-4425\Lee\Jeep0887-7.dgn
asdw



PROJECT REFERENCE NO.	SHEET NO.
R-4425	LEE-10
RW SHEET NO.	
DIVISION & DDC ENGINEER	



SEE SHEET LEE-11

REVISIONS

8/17/99
 18-APR-2008 13:43
 D:\FDY\IR-4425\Lee\188881-8.dgn

PROJECT REFERENCE NO. R-4425	SHEET NO. LEE-11
REV SHEET NO.	
DIVISION 8 DDC ENGINEER	



SEE SHEET LEE-10

SEE SHEET LEE-12

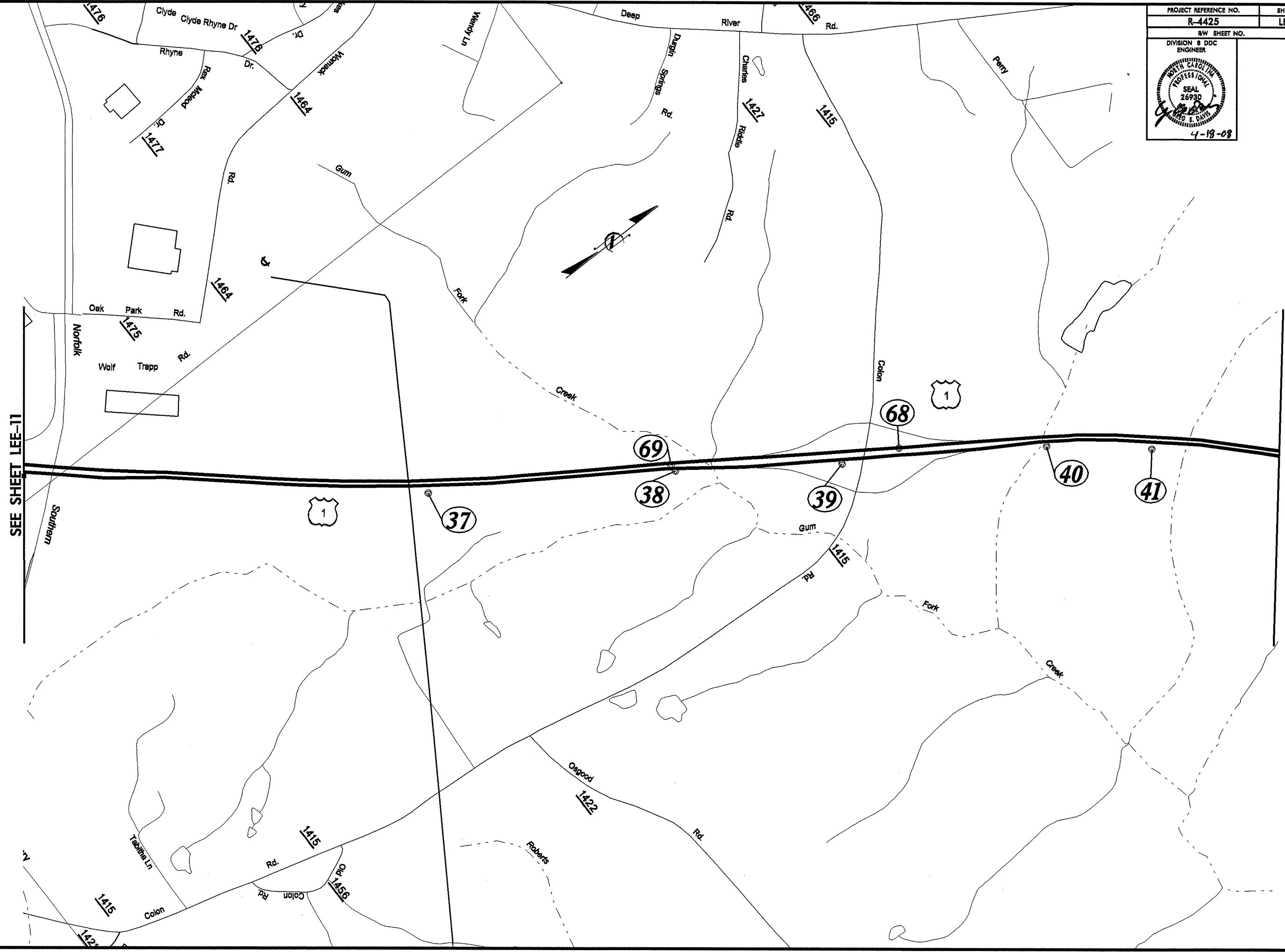
REVISIONS

8/17/99
 18-APR-2008 13:43
 D:\PROJ\R-4425\Lee\Lee(S)-9.dgn

PROJECT REFERENCE NO. R-4425	SHEET NO. LEE-12
RW SHEET NO.	
DIVISION 8 DDC ENGINEER	

8/17/99

REVISIONS



SEE SHEET LEE-11

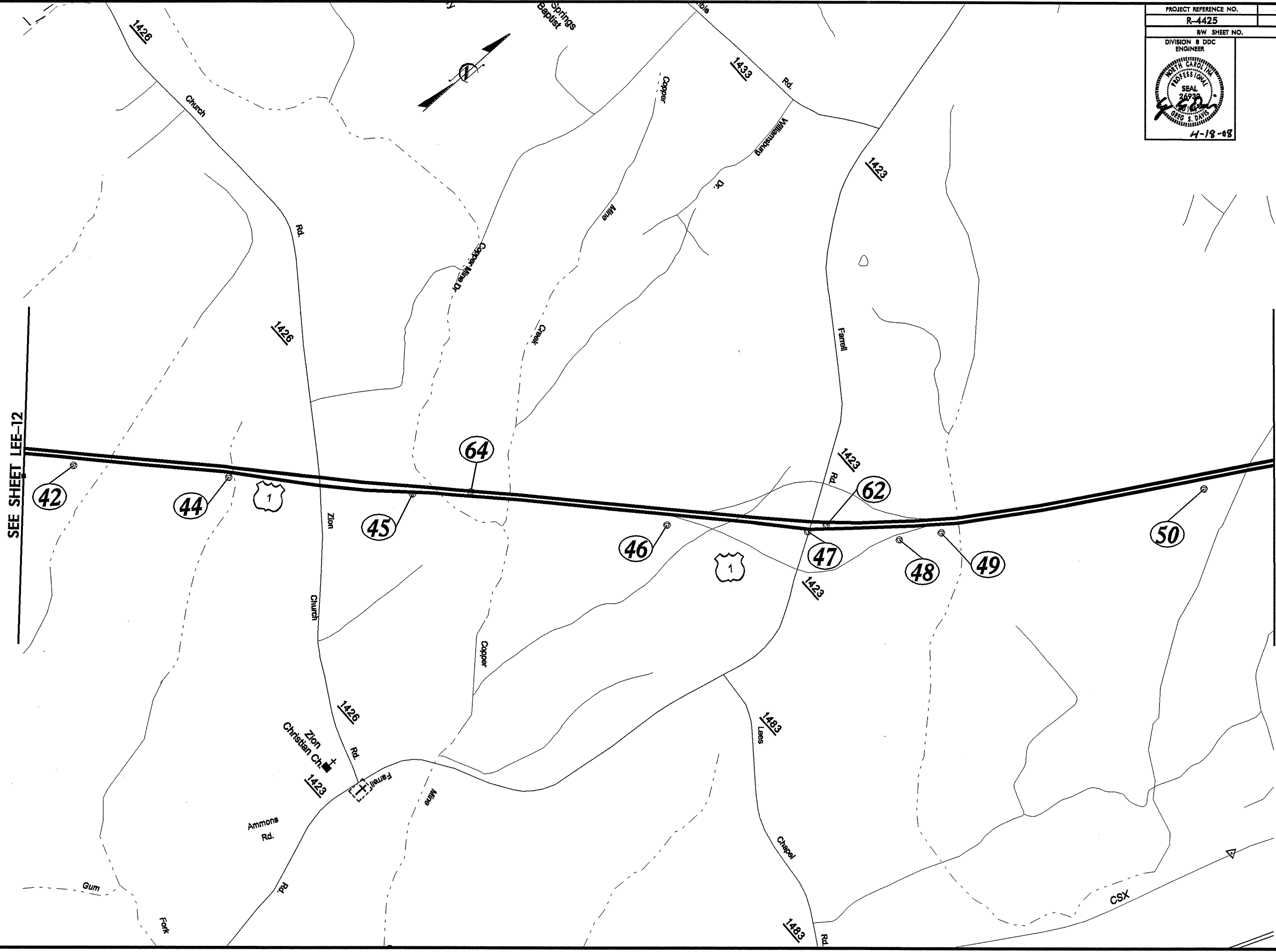
SEE SHEET LEE-13

18-APR-2008 13:43
D:\ROY\14425\Lee\LeeUSJ-10.dgn

PROJECT REFERENCE NO. R-4425	SHEET NO. LEE-13
RW SHEET NO.	
DIVISION 8 DDC ENGINEER	

8/17/99
 18-APR-2008 13:43
 Dr: F:\FYR-R-4425\Lee\13.dgn
 8/17/99

REVISIONS



SEE SHEET LEE-12

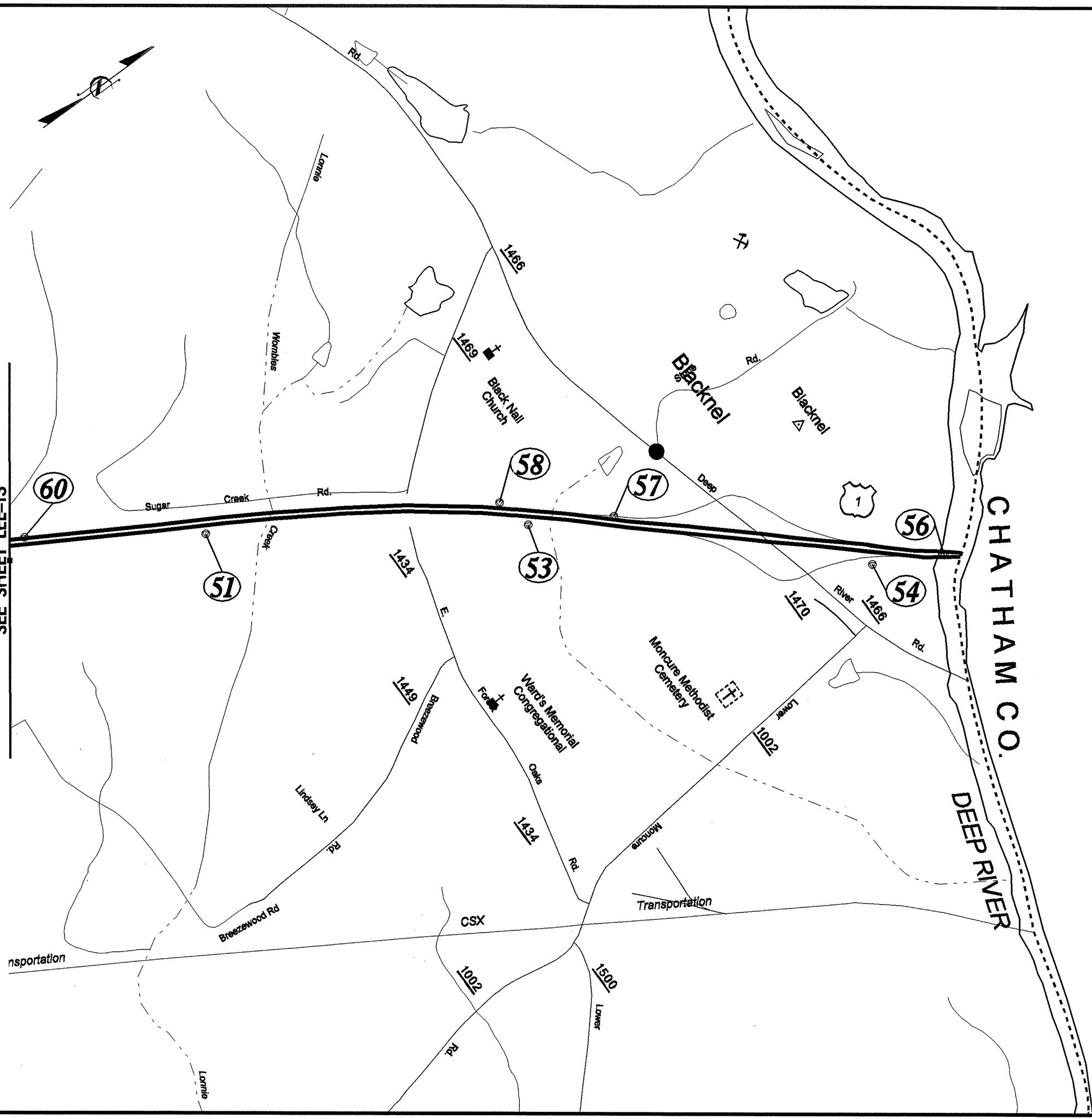
SEE SHEET LEE-14

PROJECT REFERENCE NO.	SHEET NO.
R-4425	LEE-14
RW SHEET NO.	
DIVISION 8 DDC ENGINEER	

8/17/99

REVISIONS

SEE SHEET LEE-13



18-APR-2008 13:43
 Dr: FDK/R-4425/LEE-14/REGUSJ-12.dgn
 14-11-08 10:51:17