

STATE OF NORTH CAROLINA
DIVISION OF HIGHWAYS

STATE PROJECT REFERENCE NO.	SHEET NO.
B-4020	TCP-1

**PLAN FOR PROPOSED
TRAFFIC CONTROL, MARKING & DELINEATION**

BEAUFORT /PITT COUNTIES

B-4020

ROADWAY STANDARD DRAWINGS

THE FOLLOWING ROADWAY STANDARDS AS APPEAR IN "ROADWAY STANDARD DRAWINGS"- PROJECT SERVICES UNIT-N.C. DEPARTMENT OF TRANSPORTATION-RALEIGH, N.C., DATED JULY 2006 ARE APPLICABLE TO THIS PROJECT AND BY REFERENCE HEREBY ARE CONSIDERED A PART OF THESE PLANS:

STD. NO.	TITLE
1101.03	TEMPORARY ROAD CLOSURES
1101.05	WORK ZONE VEHICLE ACCESSES
1110.01	STATIONARY WORK ZONE SIGNS
1145.01	BARRICADES
1205.01	PAVEMENT MARKINGS - LINE TYPES AND OFFSETS
1205.02	PAVEMENT MARKINGS - 2 LANE AND MULTILANE ROADWAYS
1205.12	PAVEMENT MARKINGS - BRIDGES
1250.01	PAVEMENT MARKER SPACING
1251.01	RAISED PAVEMENT MARKERS - TEMPORARY AND PERMANENT
1261.01	GUARDRAIL AND BARRIER DELINEATOR SPACING
1261.02	GUARDRAIL AND BARRIER DELINEATOR TYPES
1262.01	GUARDRAIL END DELINEATION

INDEX OF SHEETS

SHEET NO.	TITLE
TCP-1	LIST OF APPLICABLE ROADWAY STANDARD DRAWINGS, INDEX OF SHEETS, LEGEND AND PAVEMENT MARKING SCHEDULE.
TCP-2	PROJECT NOTES, LOCAL NOTES, AND PHASING.
TCP-3 & 4	OFF-SITE DETOUR
TCP-5	SPECIAL SIGN DESIGN

LEGEND

- GENERAL**
- DIRECTION OF TRAFFIC FLOW
 - NORTH ARROW
 - PROPOSED PVMT. EXIST. PVMT.
 - WORK AREA
 - REMOVAL OF EXISTING PAVEMENT
- TRAFFIC CONTROL DEVICES**
- TYPE I BARRICADE
 - TYPE II BARRICADE
 - TYPE III BARRICADE
 - CONE
 - DRUM SKINNY DRUM
 - FLASHING ARROW PANEL (TYPE C)
 - STATIONARY SIGN
 - PORTABLE SIGN
 - STATIONARY OR PORTABLE SIGN
 - CRASH CUSHION
 - CHANGEABLE MESSAGE SIGN
 - TRUCK MOUNTED IMPACT ATTENUATOR (TMIA)
 - POLICE
 - FLAGGER
- PAVEMENT MARKINGS**
- CRYSTAL/CRYSTAL PAVEMENT MARKER
 - YELLOW/YELLOW PAVEMENT MARKER
 - CRYSTAL/RED PAVEMENT MARKER
 - PAVEMENT MARKING SYMBOLS

PAVEMENT MARKING SCHEDULE			
SYMBOL	DESCRIPTION	PAY ITEM QUANTITY BREAKDOWN	TOTAL QUANTITY
FINAL PAVEMENT MARKINGS			
POLYUREA (4")			
VA	WHITE EDGELINE	2350 LF	4700 LF
VI	YELLOW DOUBLE CENTER	2350 LF	
		TOTAL	
MARKERS			
PERMANENT RAISED PAVEMENT MARKERS			
MA	YELLOW & YELLOW	16 EA	16 EA
		TOTAL	

TIP PROJECT:

16-JUL-2007 09:38 \\dot\dfsroot\01\Proj\Tipp\projects-b4020\Traffic\TrafficControl\top\B-4020_Tc_TCP_01.dgn dwbissette AT WZTC22402

APPROVED: DATE: 7/17/07	PLAN PREPARED BY: N.C.D.O.T. WORK ZONE TRAFFIC CONTROL UNIT
SEAL	J. S. BOURNE, P.E. TRAFFIC CONTROL ENGINEER
	J. S. KITE, P.E. TRAFFIC CONTROL PROJECT ENGINEER
	J. D. KUSE, P.E. TRAFFIC CONTROL PROJECT DESIGN ENGINEER
	D. W. BISSETTE, P.E. TRAFFIC CONTROL DESIGN ENGINEER / TECHNICIAN

PROJECT NOTES

PROJ. REFERENCE NO.	SHEET NO.
B-4020	TCP-2

GENERAL NOTES

CHANGES MAY BE REQUIRED WHEN PHYSICAL DIMENSIONS IN THE DETAIL DRAWINGS, STANDARD DETAILS AND ROADWAY DETAILS ARE NOT ATTAINABLE TO MEET FIELD CONDITIONS, OR RESULT IN DUPLICATE, OR UNDESIRE OVERLAPPING OF DEVICES. MODIFICATION MAY INCLUDE: MOVING, SUPPLEMENTING, COVERING OR REMOVAL OF DEVICES, AS DIRECTED BY THE ENGINEER.

THE FOLLOWING GENERAL NOTES APPLY AT ALL TIMES FOR THE DURATION OF THE CONSTRUCTION PROJECT, EXCEPT WHEN OTHERWISE NOTED IN THE PLAN, OR DIRECTED BY THE ENGINEER.

PAVEMENT EDGE DROP OFF REQUIREMENTS

- A) BACKFILL AT A 6:1 SLOPE UP TO THE EDGE AND ELEVATION OF EXISTING PAVEMENT IN AREAS ADJACENT TO AN OPENED TRAVEL LANE THAT HAS AN EDGE OF PAVEMENT DROP-OFF AS FOLLOWS:

BACKFILL DROP-OFFS THAT EXCEED 2 INCHES ON ROADWAYS WITH POSTED SPEED LIMITS OF 45 MPH OR GREATER.

BACKFILL DROP-OFFS THAT EXCEED 3 INCHES ON ROADWAYS WITH POSTED SPEED LIMITS LESS THAN 45 MPH.

BACKFILL WITH SUITABLE COMPACTED MATERIAL, AS APPROVED BY THE ENGINEER, AT NO EXPENSE TO THE DEPARTMENT.

- B) DO NOT EXCEED A DIFFERENCE OF 2 INCHES IN ELEVATION BETWEEN OPEN LANES OF TRAFFIC FOR NOMINAL LIFTS OF 1.5 INCHES. INSTALL ADVANCE WARNING "UNEVEN LANES" SIGNS (W8-11) 500' IN ADVANCE AND A MINIMUM OF EVERY HALF MILE THROUGHOUT THE UNEVEN AREA.

TRAFFIC PATTERN ALTERATIONS

- C) NOTIFY THE ENGINEER TWENTY ONE (21) CALENDAR DAYS PRIOR TO ANY TRAFFIC PATTERN ALTERATION.

SIGNING

- D) INSTALL ADVANCE WORK ZONE WARNING SIGNS WHEN WORK IS WITHIN 40 FT FROM THE EDGE OF TRAVEL LANE AND NO MORE THAN THREE (3) DAYS PRIOR TO THE BEGINNING OF CONSTRUCTION.
- E) PROVIDE PERMANENT SIGNING.
- F) PROVIDE DETOUR SIGNING WITHIN AND OFF THE PROJECT LIMITS.
- G) COVER OR REMOVE ALL DETOUR SIGNS WITHIN AND OFF THE PROJECT LIMITS WHEN A DETOUR IS NOT IN OPERATION.
- H) ENSURE ALL NECESSARY SIGNING IS IN PLACE PRIOR TO ALTERING ANY TRAFFIC PATTERN.

TRAFFIC CONTROL DEVICES

- I) PLACE TYPE III BARRICADES, WITH "ROAD CLOSED" SIGN R11-2 ATTACHED, OF SUFFICIENT LENGTH TO CLOSE ENTIRE ROADWAY.

PAVEMENT MARKINGS AND MARKERS

- J) INSTALL PAVEMENT MARKINGS AND PAVEMENT MARKERS ON THE FINAL SURFACE AS FOLLOWS:

ROAD NAME	MARKING	MARKER
SR 1567	POLYUREA	RAISED REFLECTIVE
SR 1403	POLYUREA	RAISED REFLECTIVE

- K) TIE PROPOSED PAVEMENT MARKING LINES TO EXISTING PAVEMENT MARKING LINES.


LOCAL NOTES

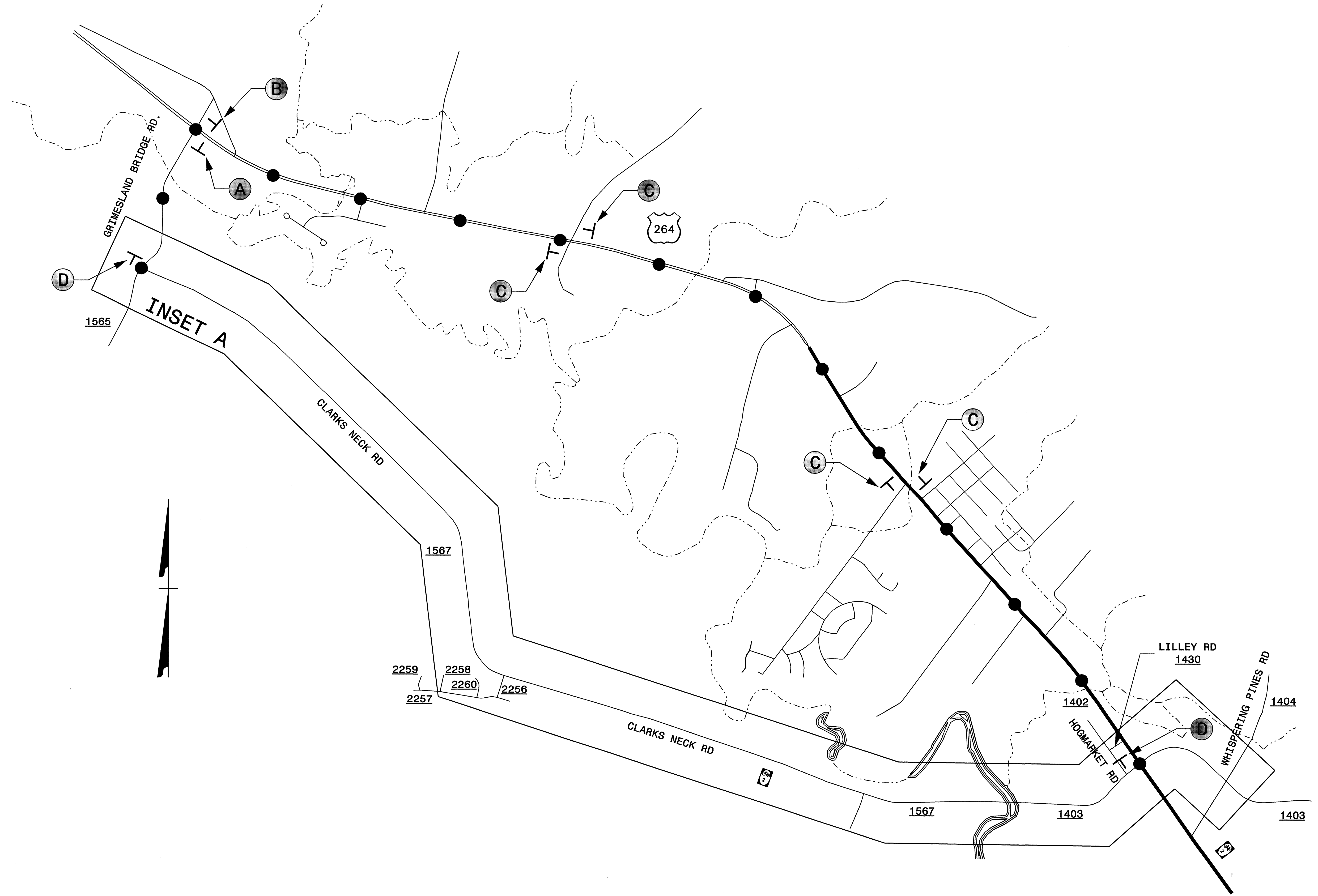
1. INSTALL SIGNS BEFORE THE BARRICADES WHEN CLOSING THE ROADWAY TO TRAFFIC. REMOVE BARRICADES BEFORE THE SIGNS WHEN OPENING THE ROADWAY TO TRAFFIC. INSTALL/REMOVE SIGNS AND BARRICADES WITHIN THE SAME CALENDAR DAY.
2. ALL SIGN SPACING DIMENSIONS ARE APPROXIMATE, FIELD ADJUST AS NECESSARY OR AS DIRECTED.
3. MAINTAIN DRIVEWAY ACCESS WITHIN PROJECT LIMITS USING INCIDENTAL STONE.
4. USE FLAGGERS AS NEEDED TO MAINTAIN LOCAL TRAFFIC WITHIN ROAD CLOSURE. FLAGGING WILL BE INCIDENTAL TO THE COST OF THE CONTRACT.
5. REAPPLY PAVEMENT MARKINGS UP TO 100' BEYOND CONSTRUCTION LIMITS IF NEEDED TO REPAIR DAMAGE AND/OR TRACKING FROM CONSTRUCTION.

PHASING

- STEP 1 INSTALL SIGNS AND BARRICADES CLOSING SR 1567 AND SR 1403 TO THROUGH TRAFFIC AS SHOWN ON TCP-3, TCP-4 AND TCP-5 AND IN ACCORDANCE WITH ROADWAY STANDARD DRAWING 1101.03, SHEET 1 OF 9. (SEE LOCAL NOTES NO. 1 and 2)
- STEP 2 CONSTRUCT THE FOLLOWING WITHIN THE ROAD CLOSURE: (SEE LOCAL NOTES NO. 3, AND 4)
 -CONSTRUCT DRIVEWAY LEFT OF -L- STA. 24+45+/- TO STA. 27+00+/-
 -REMOVE THE EXISTING STRUCTURE
 -CONSTRUCT THE PROPOSED STRUCTURE
 -CONSTRUCT THE PROPOSED ROADWAY SECTION -L- UP TO BUT NOT INCLUDING THE FINAL LAYER OF SURFACE FROM STA. 16+25+/- TO STA. 19+80+/- AND FROM STA. 24+20+/- TO STA. 28+00+/-
- STEP 3 PLACE THE FINAL LAYER OF SURFACE COURSE ON -L- FROM STA. 16+25+/- TO STA. 19+80+/- AND FROM STA. 24+20+/- TO STA. 28+00+/- AND APPLY THE FINAL PAVEMENT MARKINGS AND PAVEMENT MARKERS ON -L- FROM STA. 16+25+/- TO STA. 28+00+/- (SEE LOCAL NOTE NO. 5)
- STEP 4 REMOVE ALL BARRICADES, ROAD CLOSED SIGNS AND DETOUR SIGNS AND OPEN SR 1567 TO THROUGH TRAFFIC. (SEE LOCAL NOTE NO. 1)

28 MAY 2008 10:01 AM C:\Program Files\Autodesk\AutoCAD 2008\Projects\B-4020\Traffic\TrafficControl\top\b-4020-tc-tcp-02.dgn
 DWG: dwb
 PLOT: WZ10231500
 AT: WZ10231500

APPROVED: <i>Jessica D. Kus</i> DATE: <i>5/28/08</i> 	<h2 style="margin: 0;">PROJECT NOTES</h2> <table style="width: 100%; border-collapse: collapse;"> <tr> <td style="width: 30%; font-size: 8px;">SCALE: NONE</td> <td style="width: 40%; font-size: 8px;">DATE: 05/07</td> <td style="width: 30%; font-size: 8px;">REVISIONS</td> </tr> <tr> <td style="font-size: 8px;">DWG. BY: DWB</td> <td style="font-size: 8px;">DESIGN BY: DWB</td> <td style="border: 1px solid black; height: 20px;"></td> </tr> <tr> <td style="font-size: 8px;">REVIEWED BY: JDK</td> <td style="font-size: 8px;">CADD FILE</td> <td style="border: 1px solid black; height: 20px;"></td> </tr> </table>	SCALE: NONE	DATE: 05/07	REVISIONS	DWG. BY: DWB	DESIGN BY: DWB		REVIEWED BY: JDK	CADD FILE	
SCALE: NONE	DATE: 05/07	REVISIONS								
DWG. BY: DWB	DESIGN BY: DWB									
REVIEWED BY: JDK	CADD FILE									

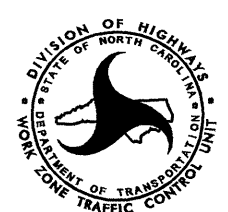


I6-JUL-2007 09:39
 \\dot\dfs\00700\Proj\Tipp\Projects-B\4020\Traffic\TrafficControl\top\B-4020-TC-TCP_03.dgn
 dwbissette AT WZTC224102

APPROVED: *Jessica K. Kuse* (DATE: 7/17/07)

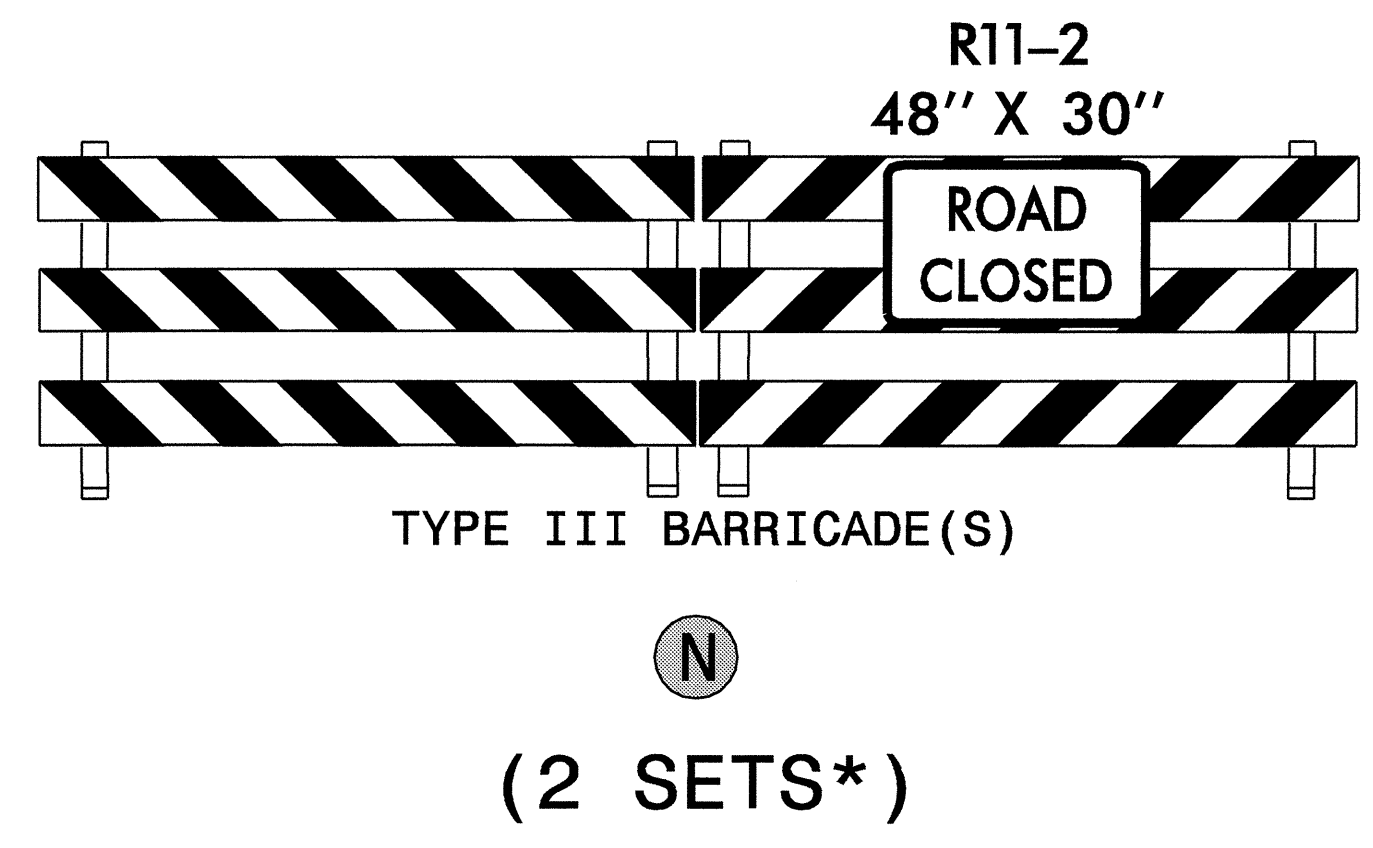
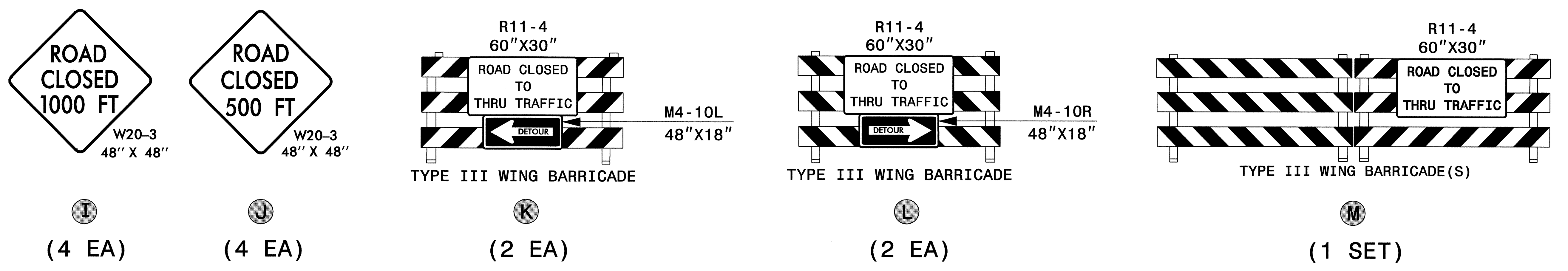
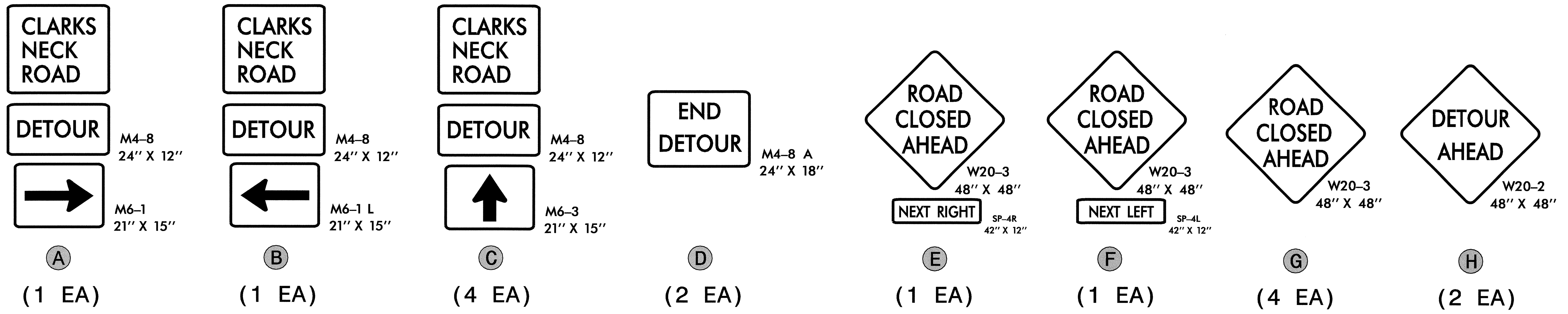
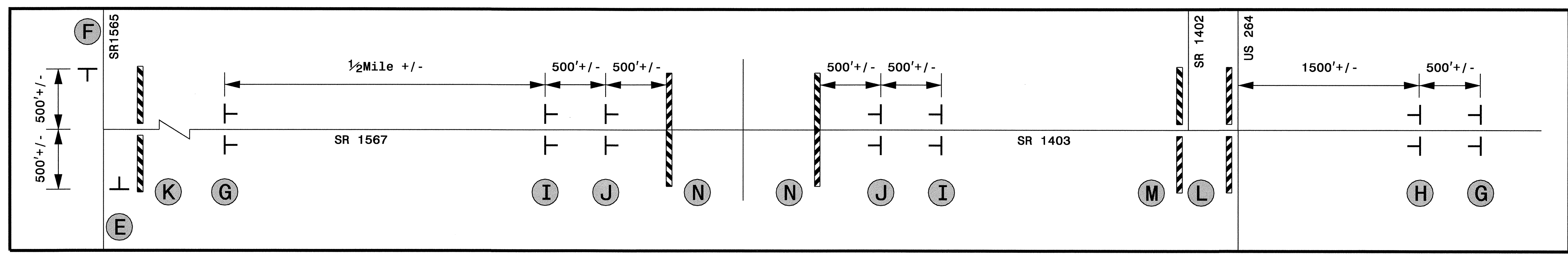
OFF-SITE DETOUR

SCALE: NONE
 DATE: 05/07
 DWG. BY: DWB
 DESIGN BY: DWB
 REVIEWED BY: JDK



REVISIONS	

CADD FILE



*BARRICADES USED TO CLOSE A ROADWAY SHALL EXTEND ACROSS THE ENTIRE ROADWAY. WHERE LOCAL TRAFFIC MUST BE MAINTAINED, THEY MAY BE PLACED IN A STAGGERED POSITION.

16-JUL-2007 09:40 \\dot\dfs\ocof01\Proj\Tipp\projects-b\4020\Traffic\TrafficControl\top\B-4020_TC_TCP_04.dgn
 dwblissette AT WZTC224102

APPROVED: <i>Jessica D. Kuse</i> DATE: 7/17/07	OFF-SITE DETOUR								
	SCALE: NONE								
	DATE: 05/07								
	DESIGN BY: DWB								
	REVIEWED BY: JDK								
<table border="1"> <thead> <tr> <th colspan="2">REVISIONS</th> </tr> </thead> <tbody> <tr> <td> </td> <td> </td> </tr> <tr> <td> </td> <td> </td> </tr> </tbody> </table>		REVISIONS						<table border="1"> <tr> <td>CADD FILE</td> </tr> </table>	CADD FILE
REVISIONS									
CADD FILE									

