

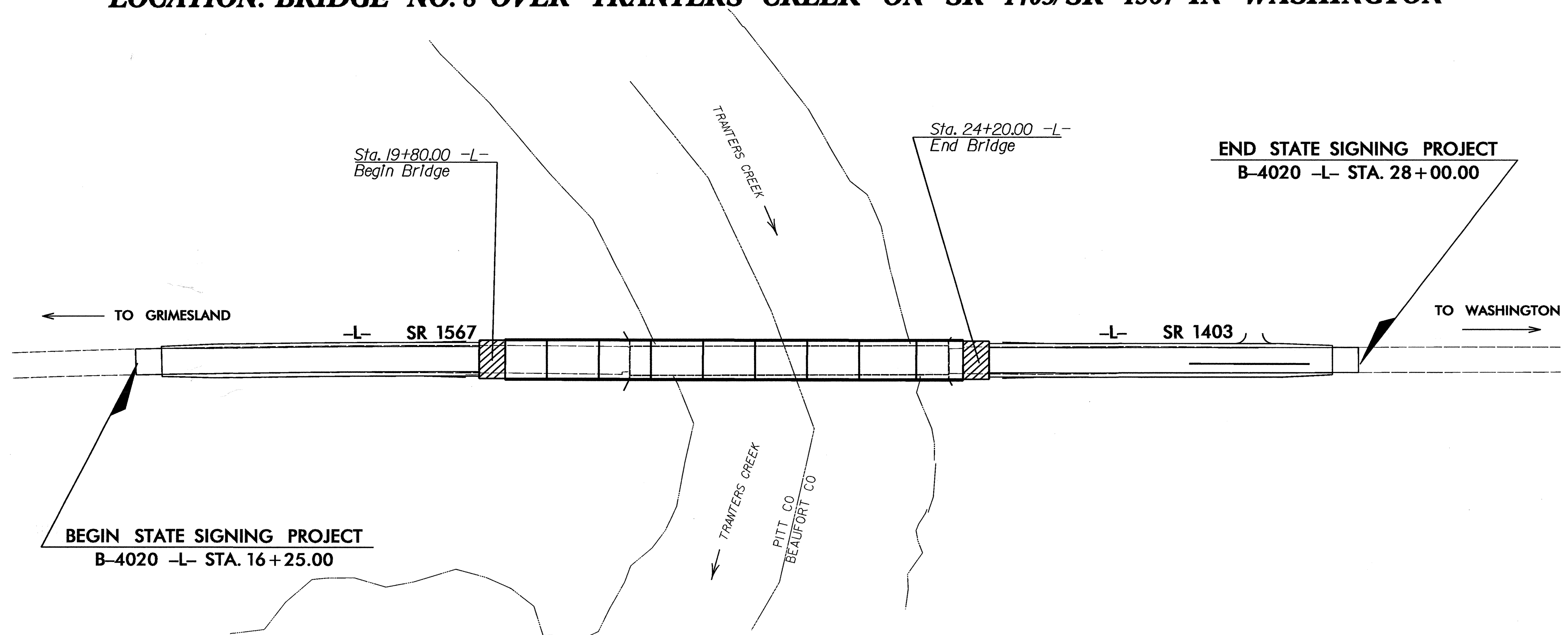
T.I.P.: B-4020

CONTRACT: C201732

**STATE OF NORTH CAROLINA  
DEPARTMENT OF TRANSPORTATION**

**SIGNING PLANS  
BEAUFORT/PITT COUNTIES**

**LOCATION: BRIDGE NO. 8 OVER TRANTERS CREEK ON SR 1403/SR 1567 IN WASHINGTON**



TIP NO. B-4020	SHEET NO. SIGN-1
APPROVED: <i>[Signature]</i>	
DATE: 9/7/07	
SEAL	



**SUMMARY OF QUANTITIES**

ITEM NO.		ITEM DESCRIPTION	QUANTITY	UNIT
DESC. NO.	SECT. NO.			
4025000000	901	CONTRACTOR FURNISHED, TYPE D SIGN	13.6	S.F.
4025000000	901	CONTRACTOR FURNISHED, TYPE E SIGN	29	S.F.
4082000000	903	SUPPORTS, WOOD	132	L.F.
4096000000	904	SIGN ERECTION, TYPE D	2	EA.
4102000000	904	SIGN ERECTION, TYPE E	5	EA.
4158000000	907	DISPOSAL OF SIGN SYSTEM, WOOD	11	EA.

**PLAN PREPARED BY: N.C.D.O.T. SIGNING SECTION**

R. W. KING, PE      SIGNING ENGINEER  
A. I. ALQUDWAH, PE      SIGNING PROJECT ENGINEER  
D. M. EATON      SIGNING PROJECT DESIGN ENGINEER  
R. R. HENNEIN      SIGNING DESIGNER

**INDEX**

SHEET NO.	DESCRIPTION
1	TITLE SHEET
2	TYPE "D" SIGNS
3	TYPE "E" SIGNS
4	EXISTING/PROPOSED ROADWAY

**ROADWAY STANDARD DRAWINGS  
APPLICABLE TO THESE SIGNING PLANS  
903.20 904.10 904.50**



SIGN NUMBER: 301 TYPE: D QUANTITY: 1 SIGN WIDTH: 66" HEIGHT: 18" TOTAL AREA: 8.3 Sq.Ft. BORDER TYPE: FLUSH RECESS: 0" WIDTH: 0.75" RADII: 3" NO. Z BARS: LENGTH:	BACKG COLOR: Green COPY COLOR: White SYMBOL X Y WID HT	DESIGN BY: R. HENNEIN PROJECT ID: B-4020 CHECKED BY: DIV: 2 DATE: Aug 21, 2007
---	--	--

BORDER  
R=3"  
TH=0.75"

Spacing Factor is 1 unless specified otherwise

USE NOTES:  
1. Legend and border shall be direct applied Type III reflective sheeting.  
2. Background shall be Type III reflective sheeting.

LETTER POSITIONS

Letter spacings are to start of next letter

	B	E	A	U	F	O	R	T	C	O		Series/Size Text Length		
	5.6	5.1	4.2	6	5.5	4.5	5.6	4.6	3.7	6	5.3	4.3	5.6	D 2000 54.7

FILENAME: signdesigns NORTH CAROLINA D.O.T. SIGN DETAIL

SIGN NUMBER: 302 TYPE: D QUANTITY: 1 SIGN WIDTH: 42" HEIGHT: 18" TOTAL AREA: 5.3 Sq.Ft. BORDER TYPE: FLUSH RECESS: 0" WIDTH: 0.75" RADII: 3" NO. Z BARS: LENGTH:	BACKG COLOR: Green COPY COLOR: White SYMBOL X Y WID HT	DESIGN BY: R. HENNEIN PROJECT ID: B-4020 CHECKED BY: DIV: 2 DATE: Aug 21, 2007
---	--	--

BORDER  
R=3"  
TH=0.75"

Spacing Factor is 1 unless specified otherwise

USE NOTES:  
1. Legend and border shall be direct applied Type III reflective sheeting.  
2. Background shall be Type III reflective sheeting.

LETTER POSITIONS

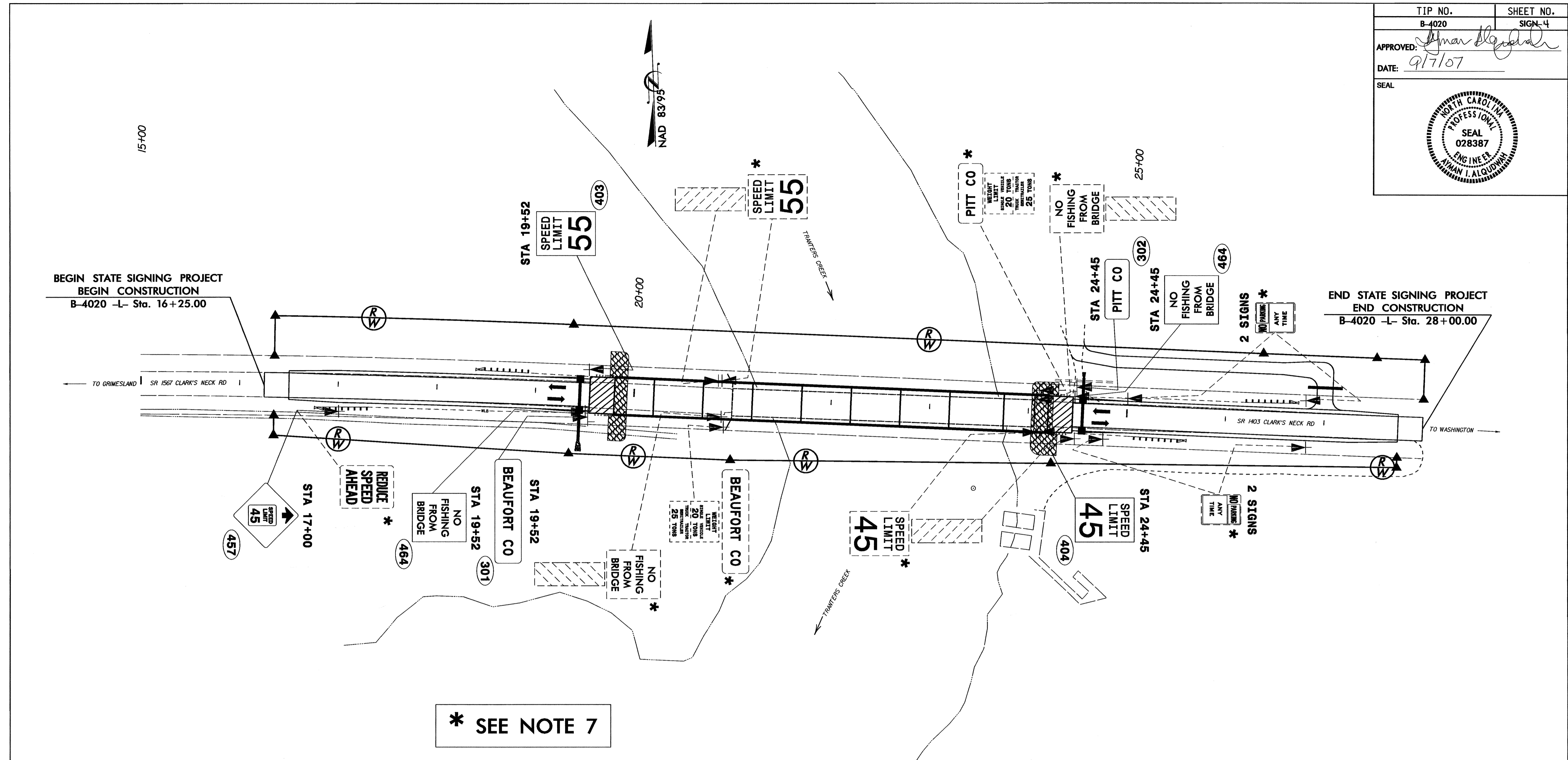
Letter spacings are to start of next letter

	P	I	T	T	C	O		Series/Size Text Length		
	5.9	5	1.9	4.1	3.7	6	5.3	4.3	5.9	D 2000 30.2

FILENAME: signdesigns NORTH CAROLINA D.O.T. SIGN DETAIL

TYPE "D" SIGNS





**WARNING SIGNS PLACEMENT CHART**

POSTED OR 85TH PERCENTILE SPEED MPH (KMH)	MUTCD DISTANCE FT (M)	SUGGESTED LOCATION FT (M)	SUGGESTED MAXIMUM FT (M)
30 (50)	450 (140)	475 (145)	575 (175)
35 (55)	550 (170)	575 (175)	675 (205)
40 (65)	650 (200)	675 (205)	775 (235)
45 (70)	750 (230)	775 (235)	875 (270)
50 (80)	850 (260)	875 (270)	975 (300)
55 (90)	950 (290)	975 (300)	1075 (330)
60 (95)	1100 (335)	1125 (345)	1225 (375)
65 (105)	1200 (365)	1225 (375)	1325 (405)
70 (115)	1250 (380)	1275 (390)	1375 (420)

- SEE ROADWAY STANDARD NO. 904.50 FOR MOUNTING OF TYPE 'D', 'E', AND 'F' SIGNS ON 'U' CHANNEL POSTS.
- SEE CHART FOR PLACEMENT OF WARNING SIGNS. DISTANCES SHOWN IN MINIMUM ROAD COLUMNS ARE FOR LEVEL ROADWAYS. MAKE CORRECTIONS FOR GRADES. IF 48-INCH (1219 MM) SIGNS ARE USED, THE LEGIBILITY DISTANCE MAY BE INCREASED TO 200 FEET (61 M). THIS WOULD ALLOW REDUCING THE CHART SPECIFIED DISTANCE BY 75 FEET (23 M).
- IF THE BRIDGE IS OVER A MAJOR STREAM OR RIVER, A SIGN FOR THE NAME OF THE STREAM OR RIVER SHOULD BE INSTALLED AT EACH APPROACH. THESE DESIGNS WILL BE COMPLETED BY THE SIGNING SECTION UPON REQUEST.
- SIGNS FURNISHED BY CONTRACTOR. BACKGROUND SHEETING SHALL BE TYPE III REFLECTIVE SHEETING.
- DISPOSAL OF SIGN SYSTEM, U-CHANNEL.
- SIGN ERECTION, RELOCATE SIGN TYPE D, E, OR F.
- DISPOSAL OF SIGN SYSTEM, WOOD.
- DISPOSAL OF SIGN, D, E, OR F.
- DISPOSAL OF SUPPORT, U-CHANNEL.

**STA 15+00 TO 28+00**  
**SR 1567/SR 1403**  
**EXISTING/PROPOSED ROADWAY**