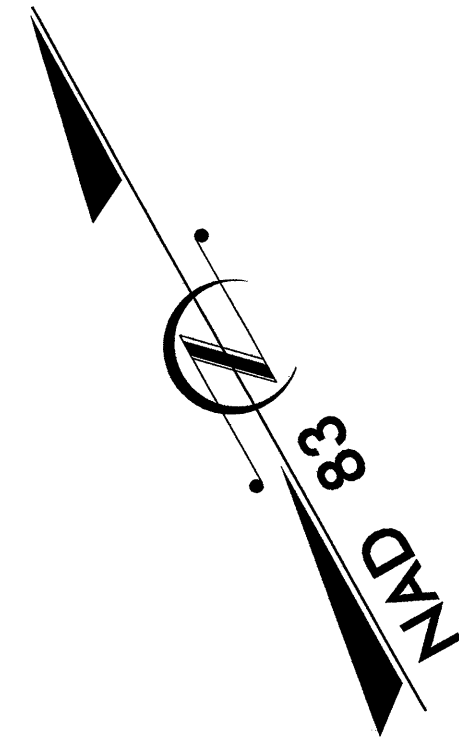


**TIP PROJECT: B-4210**



STATE OF NORTH CAROLINA  
 DIVISION OF HIGHWAYS  
 PLAN FOR PROPOSED  
 HIGHWAY EROSION CONTROL

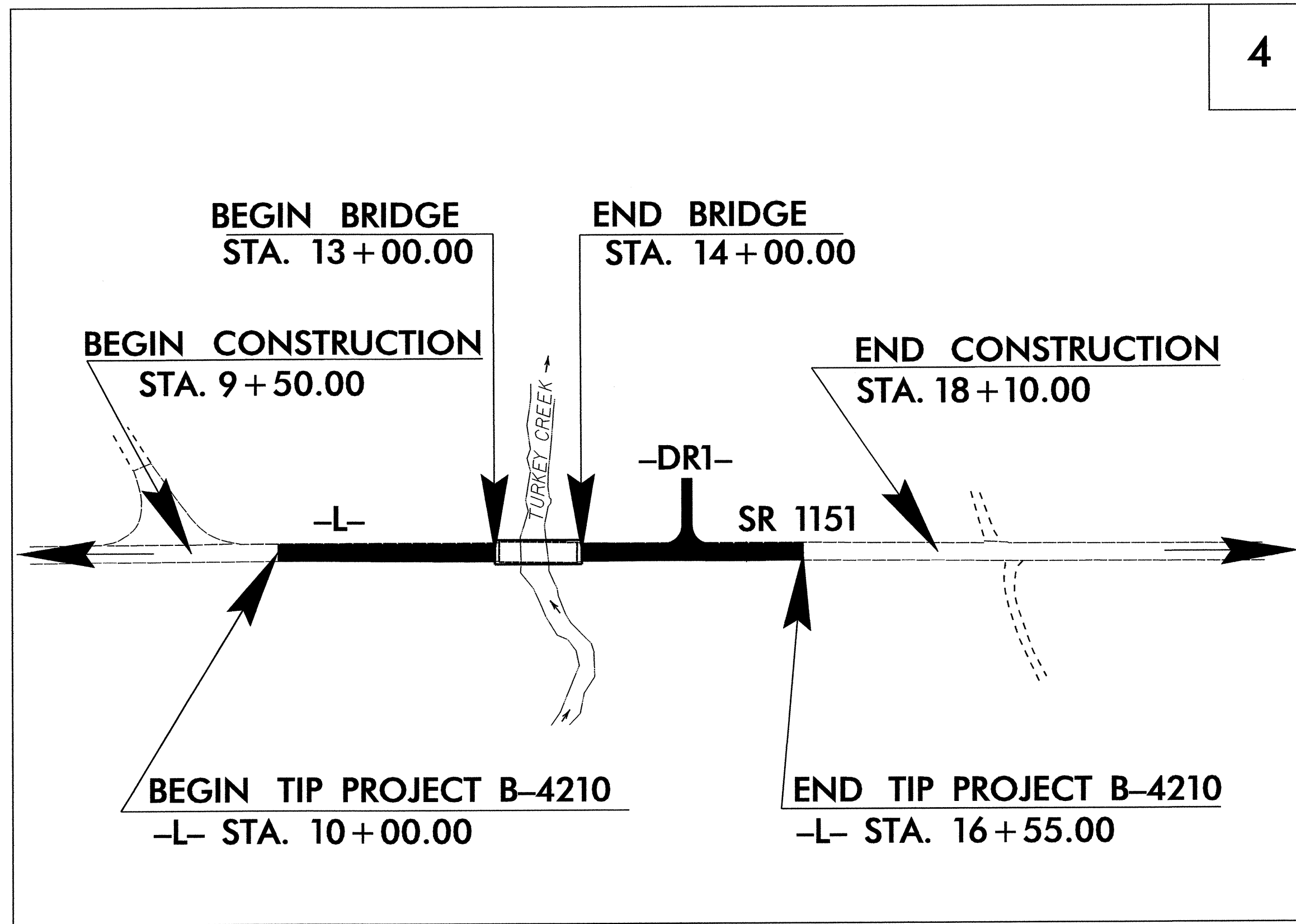
**LOCATION: BRIDGE NO. 95 OVER TURKEY CREEK ON SR 1151**

**TYPE OF WORK: GRADING, PAVING, DRAINAGE, STRUCTURE,  
 AND GUARDRAIL**

STATE	STATE PROJECT REFERENCE NO.	SHEET NO.	TOTAL SHEETS
N.C.	B-4210	EC-1	
STATE PROJ. NO.	F.A. PROJ. NO.	DESCRIPTION	

**EROSION AND SEDIMENT CONTROL MEASURES**

Std. #	Description	Symbol
1630.03	Temporary Silt Ditch.....	TD
1630.05	Temporary Diversion.....	TD
1605.01	Temporary Silt Fence.....	
1606.01	Special Sediment Control Fence.....	▲▲▲
1622.01	Temporary Berms and Slope Drains.....	—
1630.01	Riser Basin.....	⊙
1630.02	Silt Basin Type B.....	▨
1633.01	Temporary Rock Silt Check Type-A.....	▩
	Temporary Rock Silt Check Type-B.....	▶
	Wattle.....	⤵
1634.01	Temporary Rock Sediment Dam Type-A.....	⊞
1634.02	Temporary Rock Sediment Dam Type-B.....	⊞
1635.01	Rock Pipe Inlet Sediment Trap Type-A.....	⊞
1635.02	Rock Pipe Inlet Sediment Trap Type-B.....	⊞
1630.04	Stilling Basin.....	▭
	Rock Inlet Sediment Trap:	
1632.01	Type A.....	A
1632.02	Type B.....	B
1632.03	Type C.....	C
	Skimmer Basin.....	▭
	Tiered Skimmer Basin.....	▭
	Infiltration Basin.....	▭



**THIS PROJECT CONTAINS  
 EROSION CONTROL PLANS  
 FOR CLEARING AND  
 GRUBBING PHASE OF  
 CONSTRUCTION.**

**THIS PROJECT HAS  
 BEEN DESIGNED TO  
 SENSITIVE WATERSHED  
 STANDARDS.**

**ENVIRONMENTALLY  
 SENSITIVE AREA(S) EXIST  
 ON THIS PROJECT**  
*Refer To E. C. Special Provisions  
 for Special Considerations.*

**GRAPHIC SCALE**

0

PLANS

0

PROFILE (HORIZONTAL)

0

PROFILE (VERTICAL)

ROADSIDE ENVIRONMENTAL UNIT  
 DIVISION OF HIGHWAYS  
 STATE OF NORTH CAROLINA

Prepared In the Office of:  
**ROADSIDE ENVIRONMENTAL UNIT**  
 1 South Wilmington St.  
 Raleigh, NC 27611  
**2006 STANDARD SPECIFICATIONS**

Roadway Standard Drawings

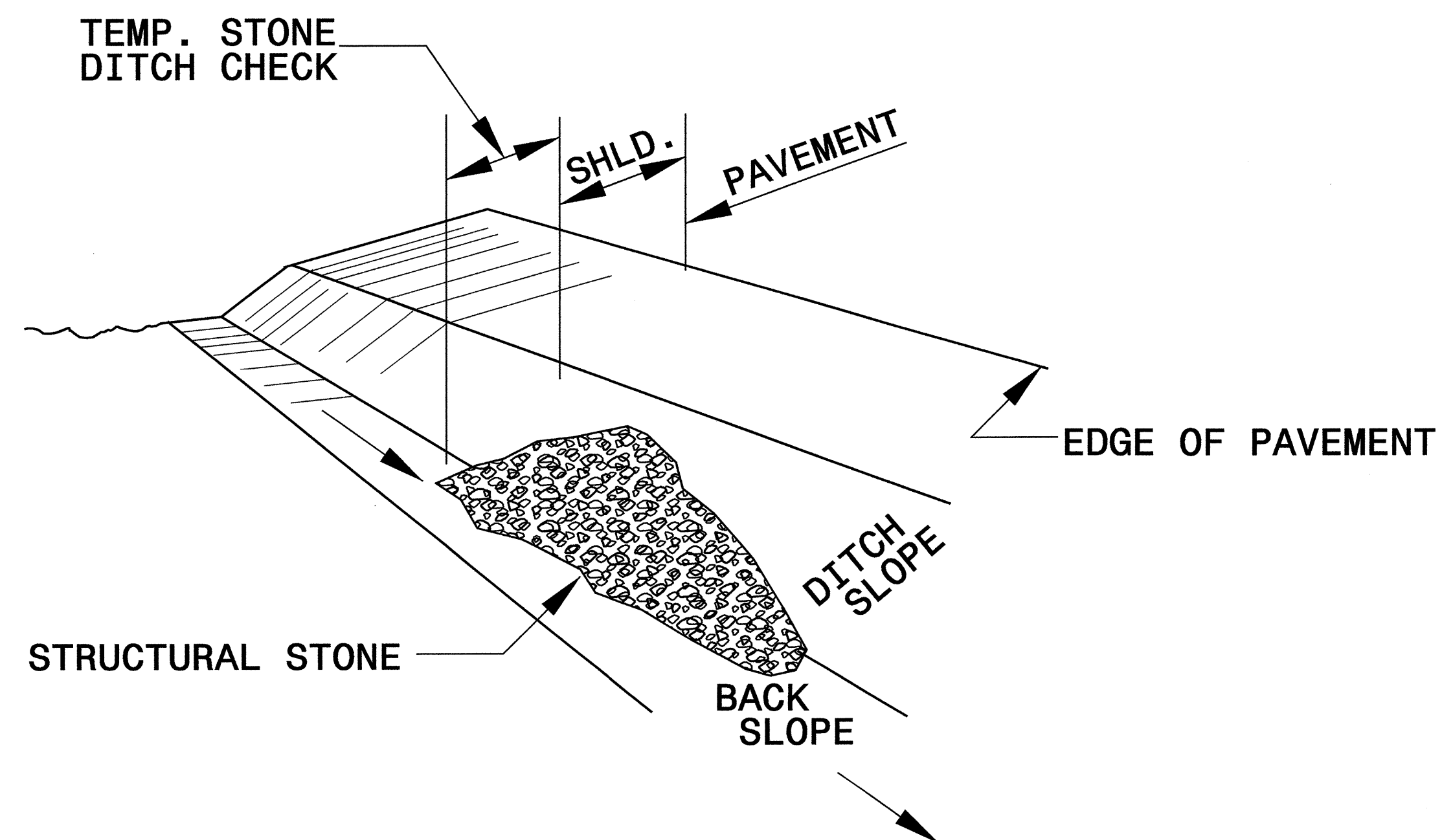
The following roadway english standards as appear in "Roadway Standard Drawings"- Roadway Design Unit - N. C. Department of Transportation - Raleigh, N. C., dated July 18, 2006 and the latest revision thereto are applicable to this project and by reference hereby are considered a part of these plans.

1605.01 Temporary Silt Fence	1632.03 Rock Inlet Sediment Trap Type C
1607.01 Gravel Construction Entrance	1633.01 Temporary Rock Silt Check Type A
1622.01 Temporary Berms and Slope Drains	
1630.05 Temporary Diversion	

20-FEB-2008 08:24  
 P:\e\NRS\154\15402\RoadsideEnvironmental\design\b4210.ec.tsh.dgn

PROJECT REFERENCE NO. B-4210	SHEET NO. EC-2
RW SHEET NO.	
ROADWAY DESIGN ENGINEER	HYDRAULICS ENGINEER

# TEMPORARY ROCK SILT CHECK TYPE 'B' DETAIL

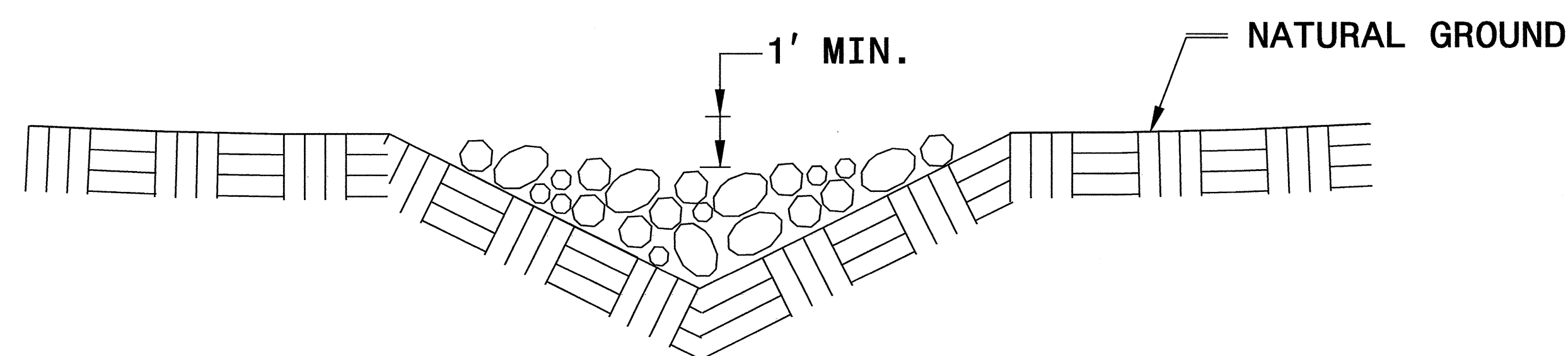


**ISOMETRIC VIEW**

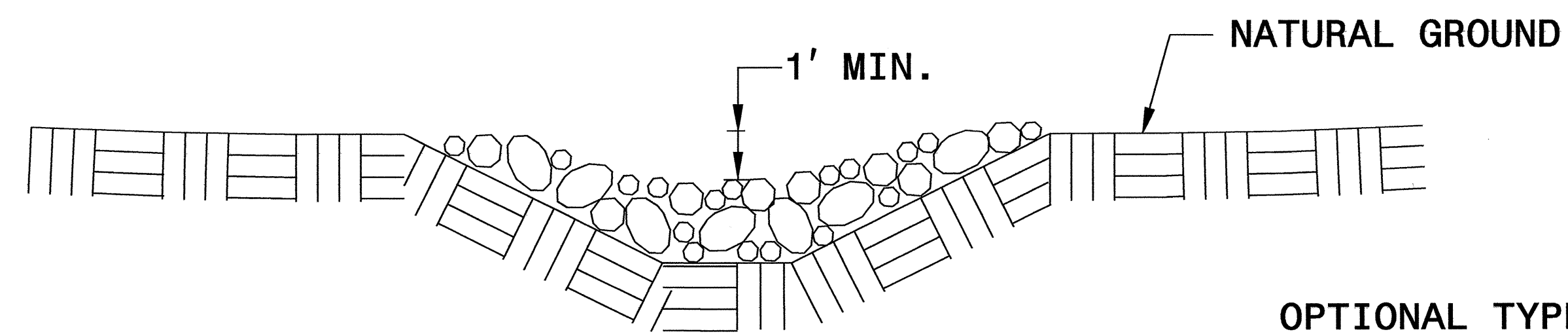
**NOTES:**

USE CLASS 'B' EROSION CONTROL STONE FOR STRUCTURAL STONE.

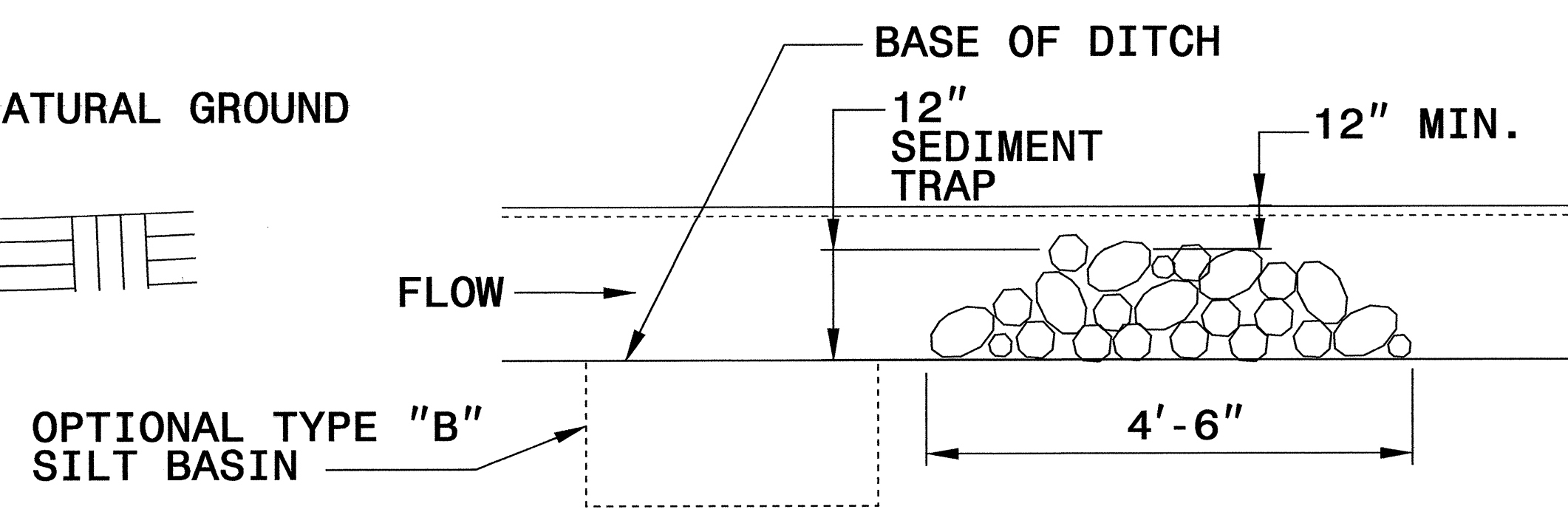
THE ENGINEER MAY DIRECT THE OPTION OF CLASS "A" STONE FOR SITES HAVING LESS THAN ONE (1) ACRE DRAINAGE AREA AND A DITCH GRADE LESS THAN 3%.



**CROSS SECTION  
VEE DITCH**



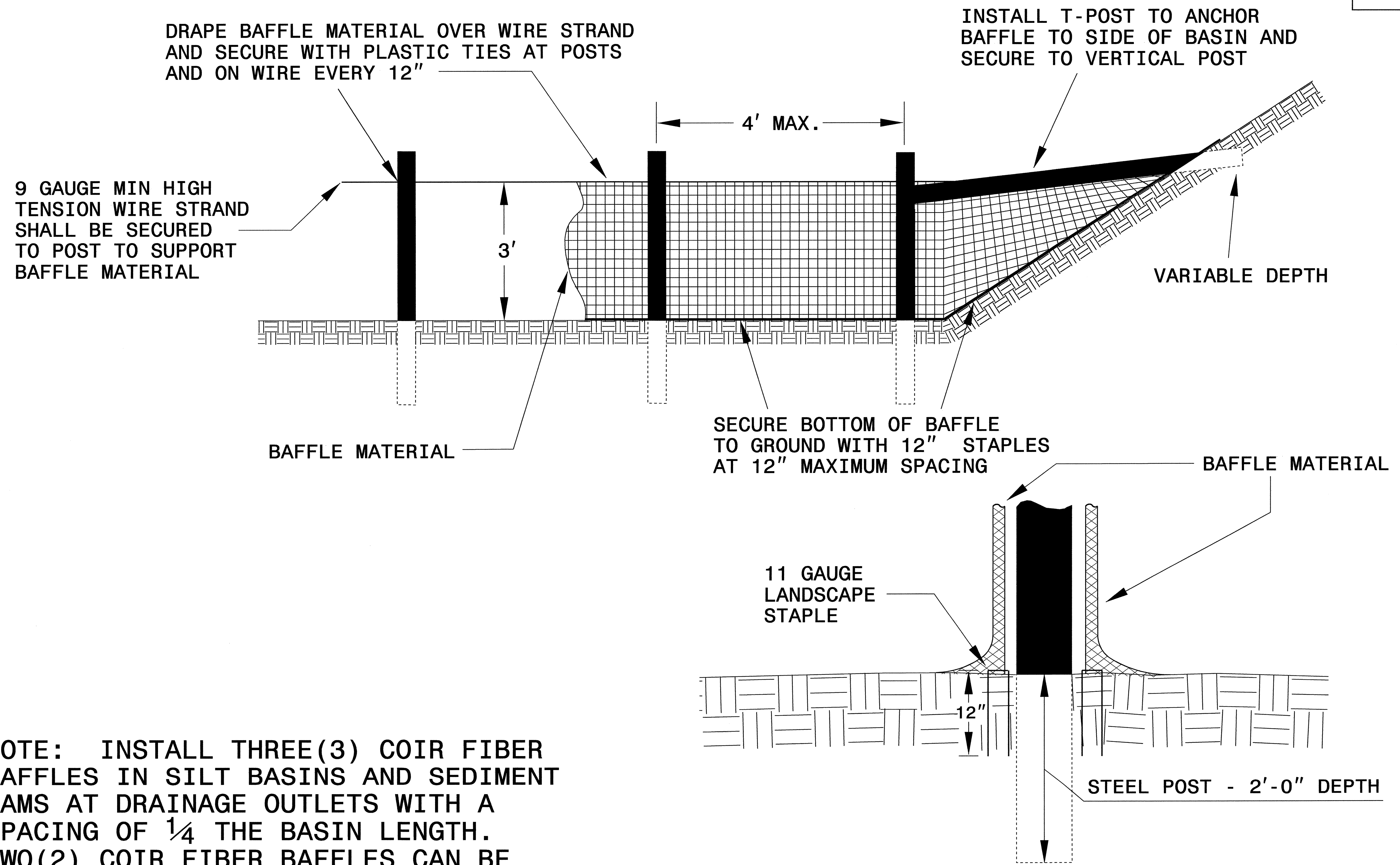
**CROSS SECTION  
TRAPEZOIDAL DITCH**



**ELEVATION VIEW**

PROJECT REFERENCE NO. B-4210	SHEET NO. EC-2A
RW SHEET NO.	
ROADWAY DESIGN ENGINEER	HYDRAULICS ENGINEER

# COIR FIBER BAFFLE DETAIL

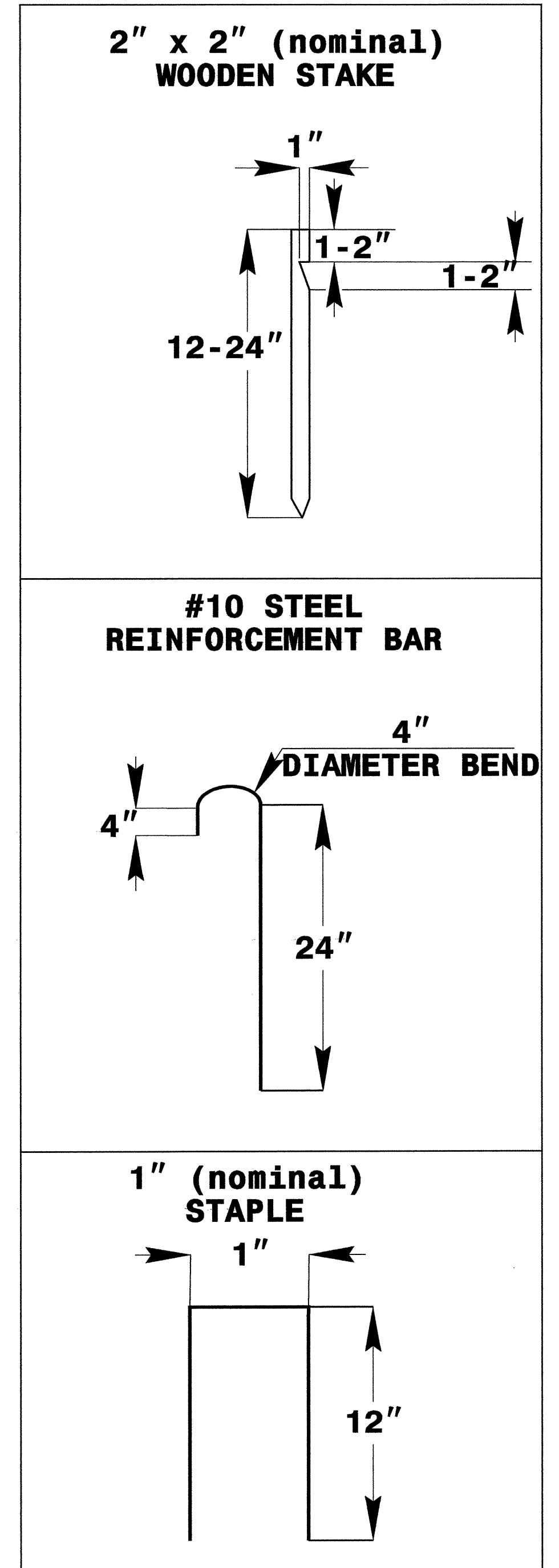
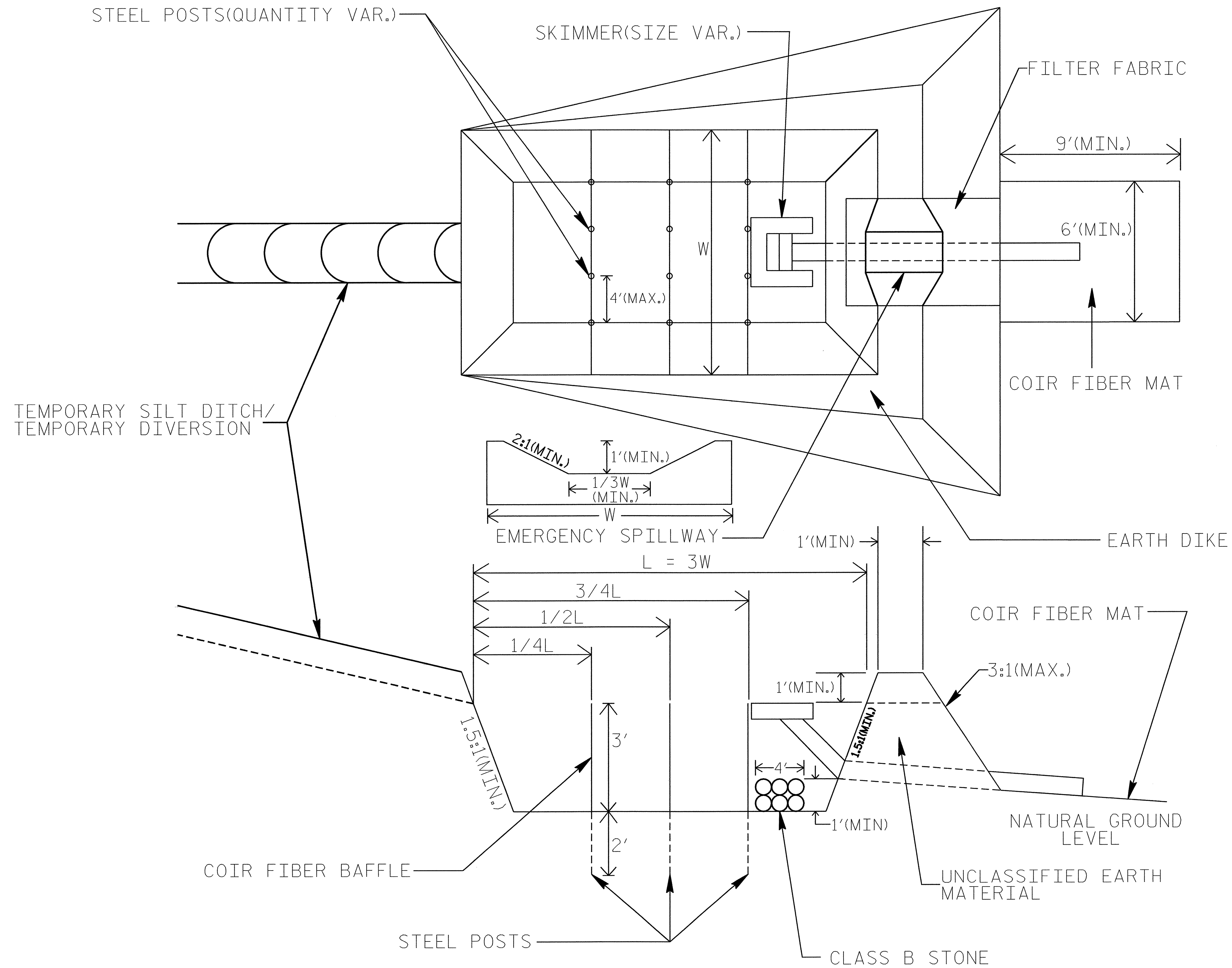


**NOTE: INSTALL THREE(3) COIR FIBER BAFFLES IN SILT BASINS AND SEDIMENT DAMS AT DRAINAGE OUTLETS WITH A SPACING OF  $\frac{1}{4}$  THE BASIN LENGTH. TWO(2) COIR FIBER BAFFLES CAN BE INSTALLED IN SILT BASINS AND DAMS LESS THAN 20 FT. IN LENGTH WITH A SPACING OF  $\frac{1}{3}$  THE BASIN LENGTH.**

**BAFFLE MATERIAL SHALL BE SECURED TO THE BOTTOM AND SIDES OF BASIN USING 12" LANDSCAPE STAPLES**

# SKIMMER BASIN WITH BAFFLES DETAIL

PROJECT REFERENCE NO. B-4210	SHEET NO. EC-2B
RW SHEET NO.	
ROADWAY DESIGN ENGINEER	HYDRAULICS ENGINEER



**COIR FIBER MAT  
ANCHOR OPTIONS**

**NOTES:**

1. SEED AND PLACE MATTING FOR EROSION CONTROL ON SIDESLOPES.
2. LIMIT EARTH DIKE HEIGHT TO 5 FT.

8/17/99

PROJECT REFERENCE NO. B-4210	SHEET NO. EC-3/CONST.4
R/W SHEET NO.	HYDRAULICS ENGINEER
ROADWAY DESIGN ENGINEER	

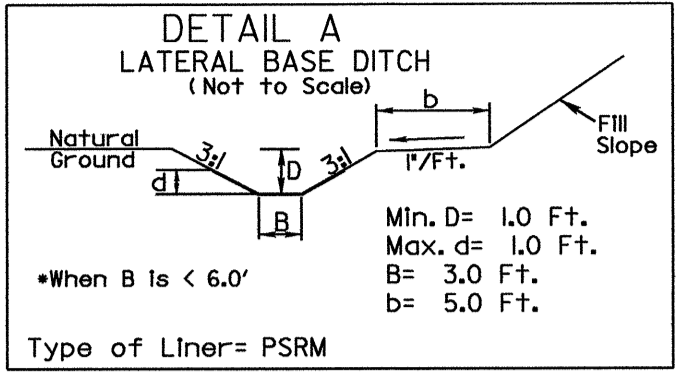
NOTE: UTILIZE TEMPORARY ROCK SILT CHECK TYPE - A AS STILLING BASIN WHERE APPLICABLE.

INSTALL FILTER FABRIC UNDER TEMPORARY ROCK SILT CHECK(S) TYPE A IN PERMITTED WETLANDS.

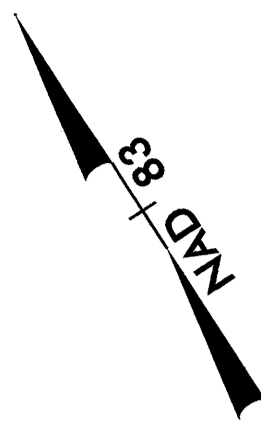
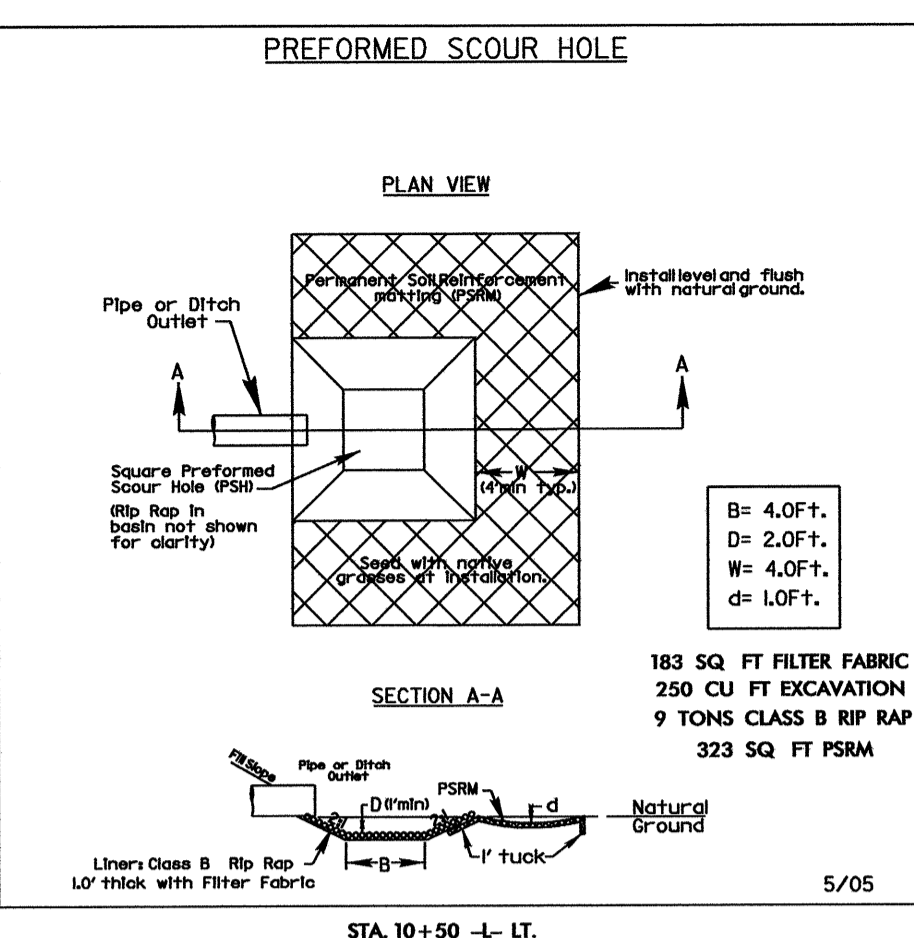
ENVIRONMENTALLY SENSITIVE AREA  
SEE PROJECT SPECIAL PROVISIONS

NOTE: PLACE TEMPORARY ROCK SEDIMENT DAMS TYPE - B AND TEMPORARY ROCK SILT CHECKS TYPE - A AT DRAINAGE OUTLETS.

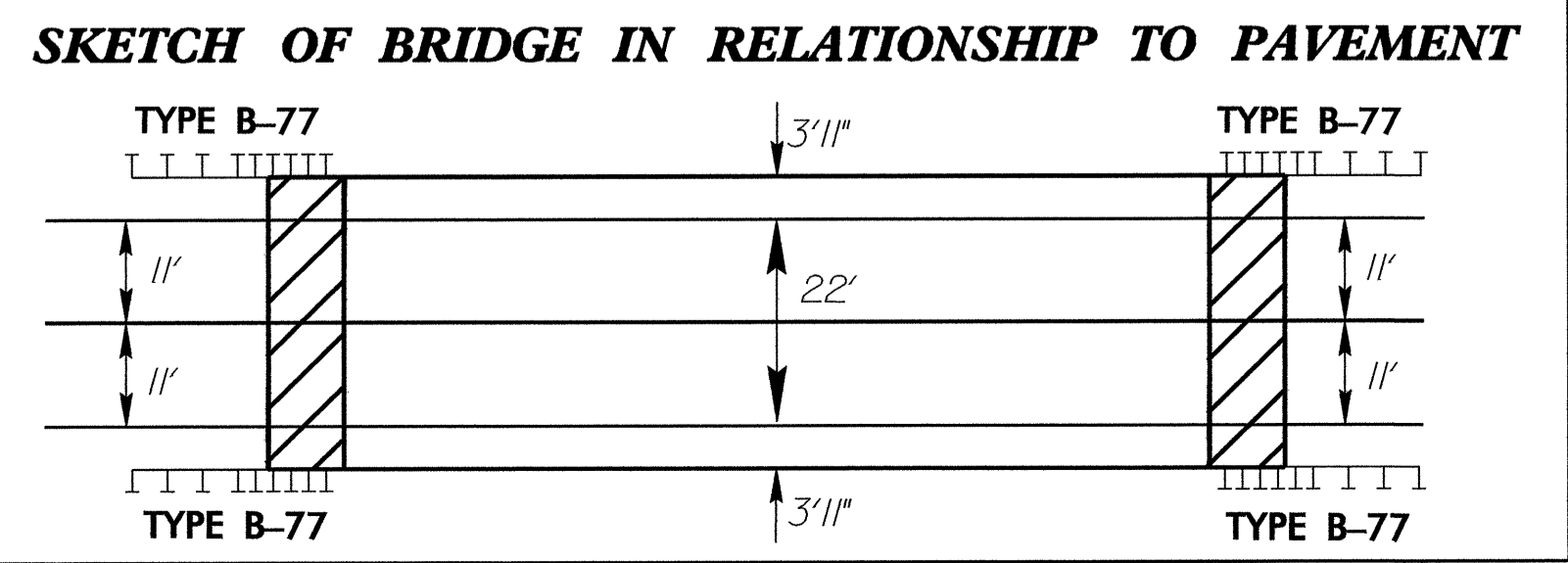
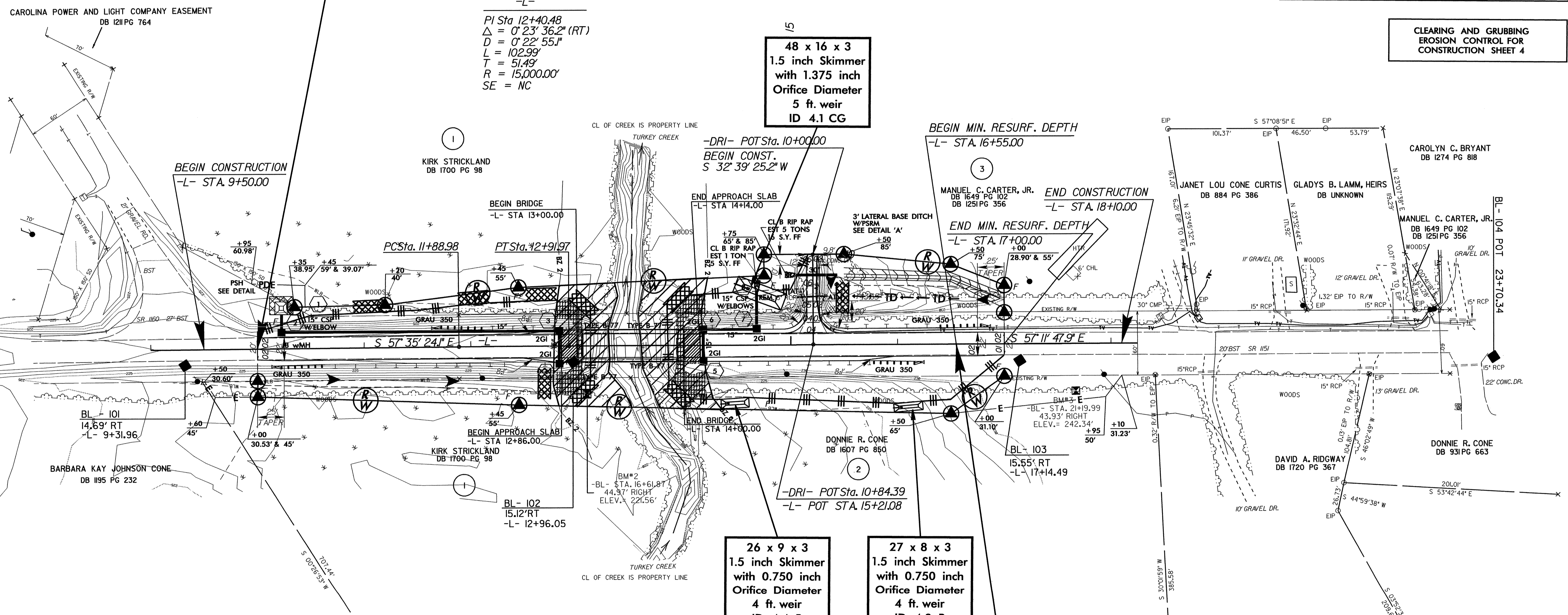
CLEARING AND GRUBBING EROSION CONTROL FOR CONSTRUCTION SHEET 4



FROM STA. 15+50 -L- TO STA. 17+00 -L- LT. DDE = 62 CY



STA. 10+00.00 -L- BEGIN STATE PROJECT B-4210



SBG: SHOULDER BERM GUTTER  
BEGIN SBG 12+83 TO BEGIN BRIDGE LT & RT.  
BEGIN SBG END BRIDGE TO 15+00 LT.  
BEGIN SBG END BRIDGE TO 15+65 RT.

STA. 16+55.00 -L-  
END STATE PROJECT B-4210

FOR -L- PROFILE SEE SHEET 5  
FOR -DRI- PROFILE SEE SHEET 5  
FOR STRUCTURE SEE SHEETS S1-SX

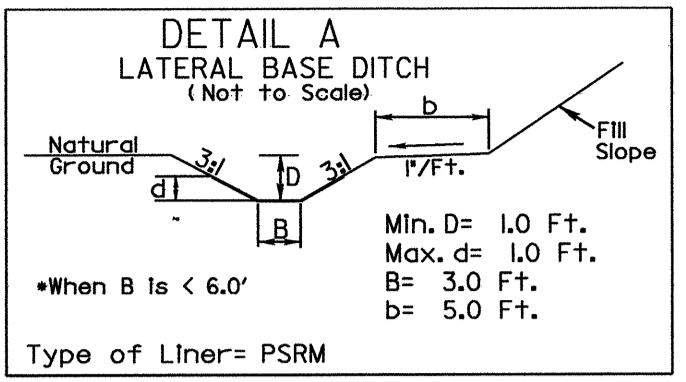
REVISIONS

20-FEB-2008 08:23  
D:\projects\ec\design\4210\ec-pshd.dgn  
20-FEB-2008 08:23  
D:\projects\ec\design\4210\ec-pshd.dgn

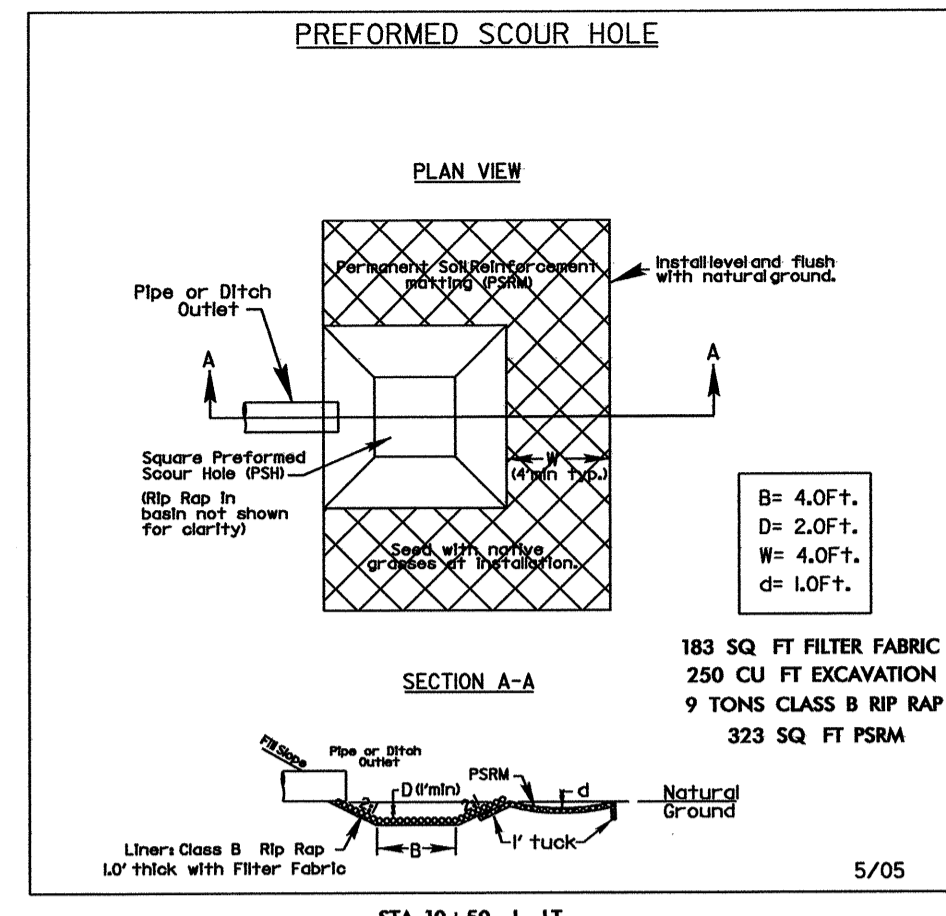
PROJECT REFERENCE NO.	SHEET NO.
B-4210	EC-4/CONST.4
R/W SHEET NO.	
ROADWAY DESIGN ENGINEER	HYDRAULICS ENGINEER

NOTE: UTILIZE TEMPORARY ROCK SILT CHECK TYPE - A AS STILLING BASIN WHERE APPLICABLE.

INSTALL FILTER FABRIC UNDER TEMPORARY ROCK SILT CHECK(S) TYPE A IN PERMITTED WETLANDS.



FROM STA. 15+50 -L- TO STA. 17+00 -L- LT. DDE = 62 CY



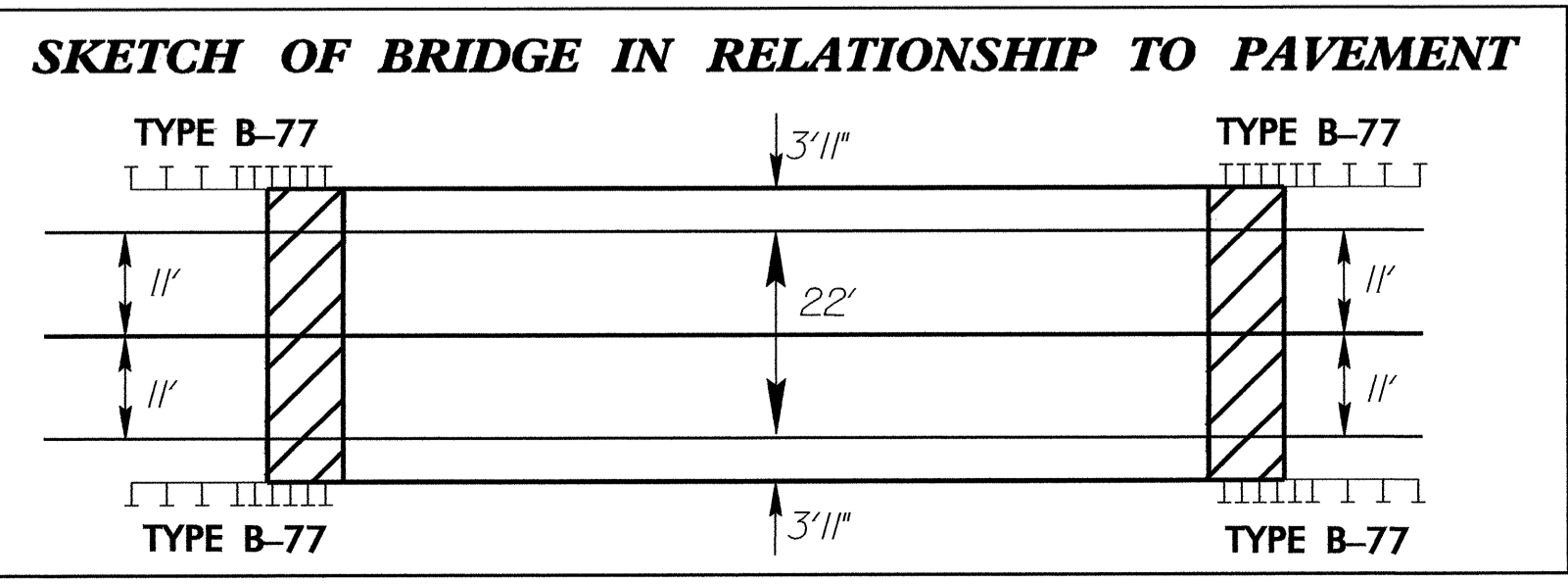
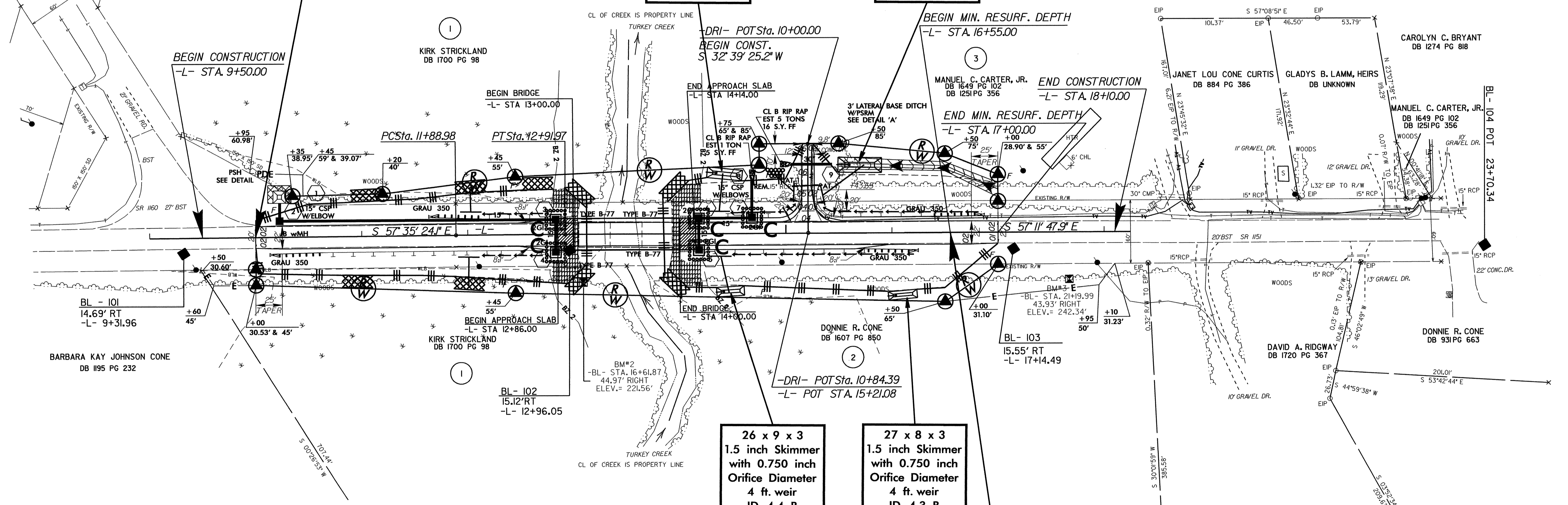
STA. 10+00.00 -L- BEGIN STATE PROJECT B-4210

CAROLINA POWER AND LIGHT COMPANY EASEMENT DB 1211 PG 764

-L-  
 PI Sta 12+40.48  
 $\Delta = 0^\circ 23' 36.2''$  (RT)  
 $D = 0' 22' 55.1''$   
 $L = 102.99'$   
 $T = 51.49'$   
 $R = 15,000.00'$   
 $SE = NC$

33 x 10 x 3  
 1.5 inch Skimmer  
 with 0.875 inch  
 Orifice Diameter  
 4 ft. weir  
 ID 4.2 F

41 x 14 x 3  
 1.5 inch Skimmer  
 with 1.250 inch  
 Orifice Diameter  
 5 ft. weir  
 ID 4.5 F



SBG: SHOULDER BERM GUTTER  
 BEGIN SBG 12+83 TO BEGIN BRIDGE LT & RT.  
 BEGIN SBG END BRIDGE TO 15+00 LT.  
 BEGIN SBG END BRIDGE TO 15+65 RT.

STA. 16+55.00 -L-  
 END STATE PROJECT B-4210

FOR -L- PROFILE SEE SHEET 5  
 FOR -DRI- PROFILE SEE SHEET 5  
 FOR STRUCTURE SEE SHEETS S1-SX

REVISIONS

8/17/99  
 20-FEB-2008 08:26:42 C:\enviro\environmental\design\4210.ec.psh.dgn  
 REVISIONS: 1. 08/17/09  
 2. 08/17/09