

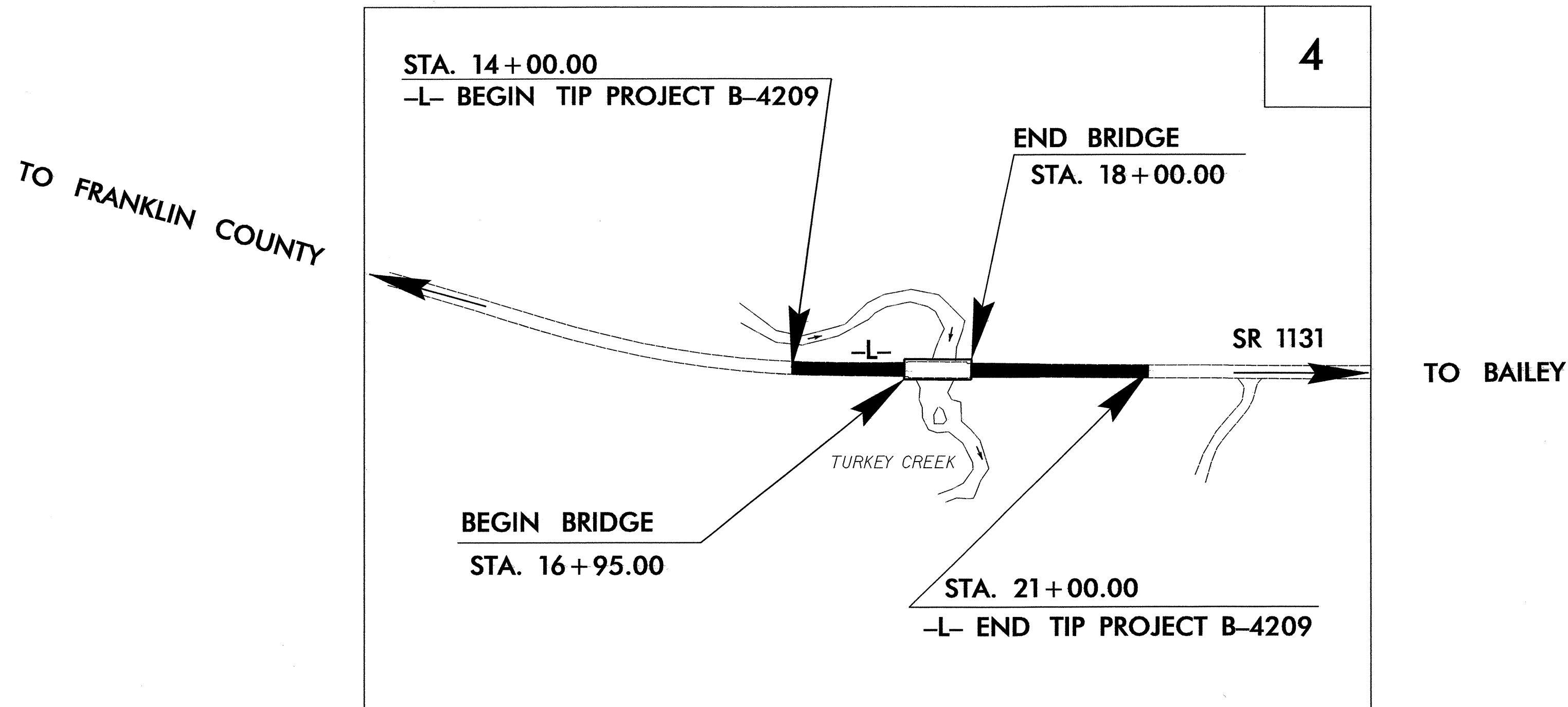
TIP PROJECT: B-4209

C201853



STATE OF NORTH CAROLINA
 DIVISION OF HIGHWAYS
 PLAN FOR PROPOSED
 HIGHWAY EROSION CONTROL
NASH COUNTY

LOCATION: BRIDGE NO. 17 OVER TURKEY CREEK ON SR 1131
TYPE OF WORK: GRADING, PAVING, DRAINAGE, STRUCTURE, AND GUARDRAIL



STATE	STATE PROJECT REFERENCE NO.	SHEET NO.	TOTAL SHEETS
N.C.	B-4209	EC-1	
STATE PROJ. NO.	F.A. PROJ. NO.	DESCRIPTION	

EROSION AND SEDIMENT CONTROL MEASURES

Std. #	Description	Symbol
1630.03	Temporary Silt Ditch	TD
1630.05	Temporary Diversion	TD
1605.01	Temporary Silt Fence	III III III
1606.01	Special Sediment Control Fence	III III III
1622.01	Temporary Berms and Slope Drains	TD
1630.01	Riser Basin	TD
1630.02	Silt Basin Type B	TD
1633.01	Temporary Rock Silt Check Type-A	TD
	Temporary Rock Silt Check Type-B	TD
	Wattle	TD
1634.01	Temporary Rock Sediment Dam Type-A	TD
1634.02	Temporary Rock Sediment Dam Type-B	TD
1635.01	Rock Pipe Inlet Sediment Trap Type-A	TD
1635.02	Rock Pipe Inlet Sediment Trap Type-B	TD
1630.04	Stilling Basin	TD
	Rock Inlet Sediment Trap:	
1632.01	Type A	A
1632.02	Type B	B
1632.03	Type C	C
	Skimmer Basin	TD
	Tiered Skimmer Basin	TD
	Infiltration Basin	TD

THIS PROJECT CONTAINS EROSION CONTROL PLANS FOR CLEARING AND GRUBBING PHASE OF CONSTRUCTION.

THIS PROJECT HAS BEEN DESIGNED TO SENSITIVE WATERSHED STANDARDS.

ENVIRONMENTALLY SENSITIVE AREA(S) EXIST ON THIS PROJECT
 Refer To E. C. Special Provisions for Special Considerations.

GRAPHIC SCALE

0

 PLANS

0

 PROFILE (HORIZONTAL)

0

 PROFILE (VERTICAL)

ROADSIDE ENVIRONMENTAL UNIT
 DIVISION OF HIGHWAYS
 STATE OF NORTH CAROLINA

Prepared in the Office of:
ROADSIDE ENVIRONMENTAL UNIT
 1 South Wilmington St.
 Raleigh, NC 27611
2006 STANDARD SPECIFICATIONS

Roadway Standard Drawings

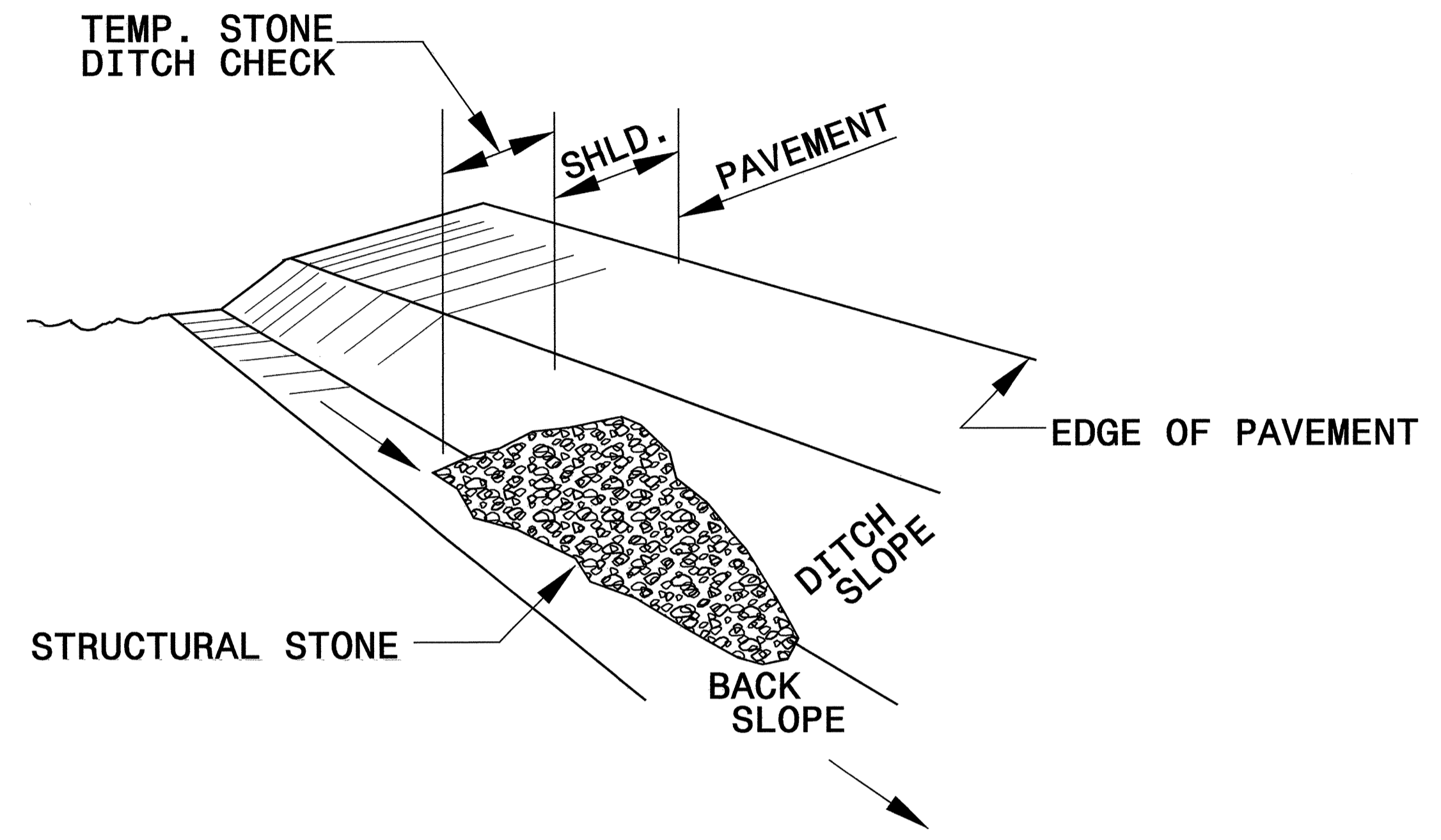
The following roadway english standards as appear in "Roadway Standard Drawings"-- Roadway Design Unit - N. C. Department of Transportation - Raleigh, N. C., dated July 18, 2006 and the latest revision thereto are applicable to this project and by reference hereby are considered a part of these plans.

1605.01 Temporary Silt Fence	1632.03 Rock Inlet Sediment Trap Type C
1606.01 Special Sediment Control Fence	1633.01 Temporary Rock Silt Check Type A
1607.01 Gravel Construction Entrance	
1622.01 Temporary Berms and Slope Drains	
1630.05 Temporary Diversion	

08-FEB-2008 07:26
 s:\b\2008\14209\Roadside Environmental\design\brt209.ec.tsh.dgn
 P:\RIS A L REV\2313

PROJECT REFERENCE NO. B-4209	SHEET NO. EC-2
RW SHEET NO.	
ROADWAY DESIGN ENGINEER	HYDRAULICS ENGINEER

TEMPORARY ROCK SILT CHECK TYPE 'B' DETAIL

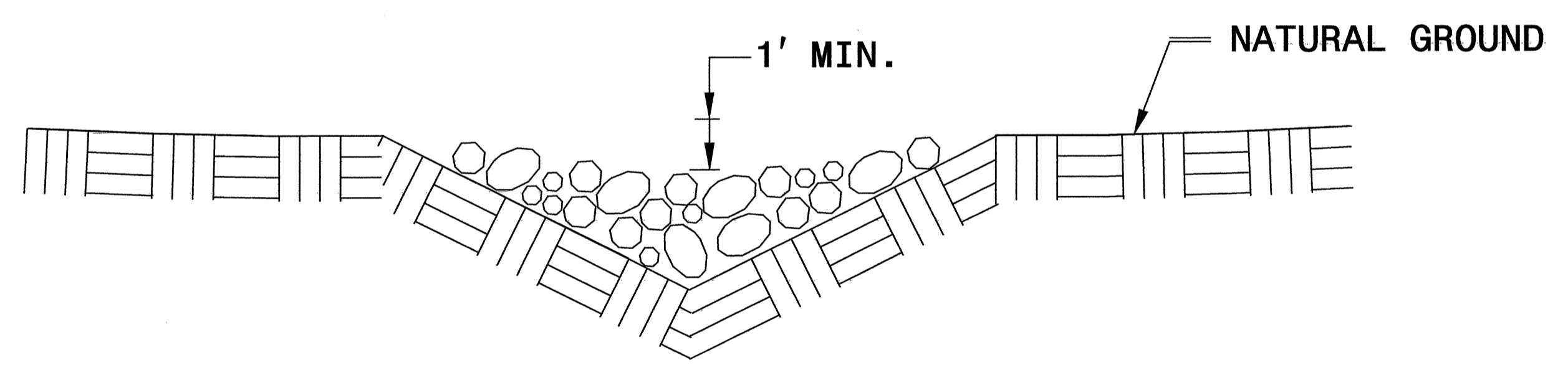


ISOMETRIC VIEW

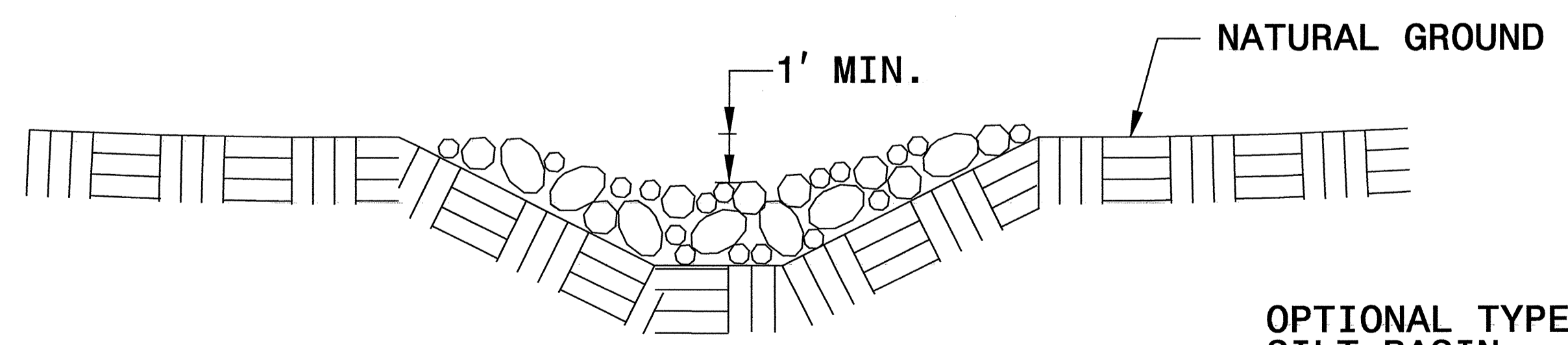
NOTES:

USE CLASS 'B' EROSION CONTROL STONE FOR STRUCTURAL STONE.

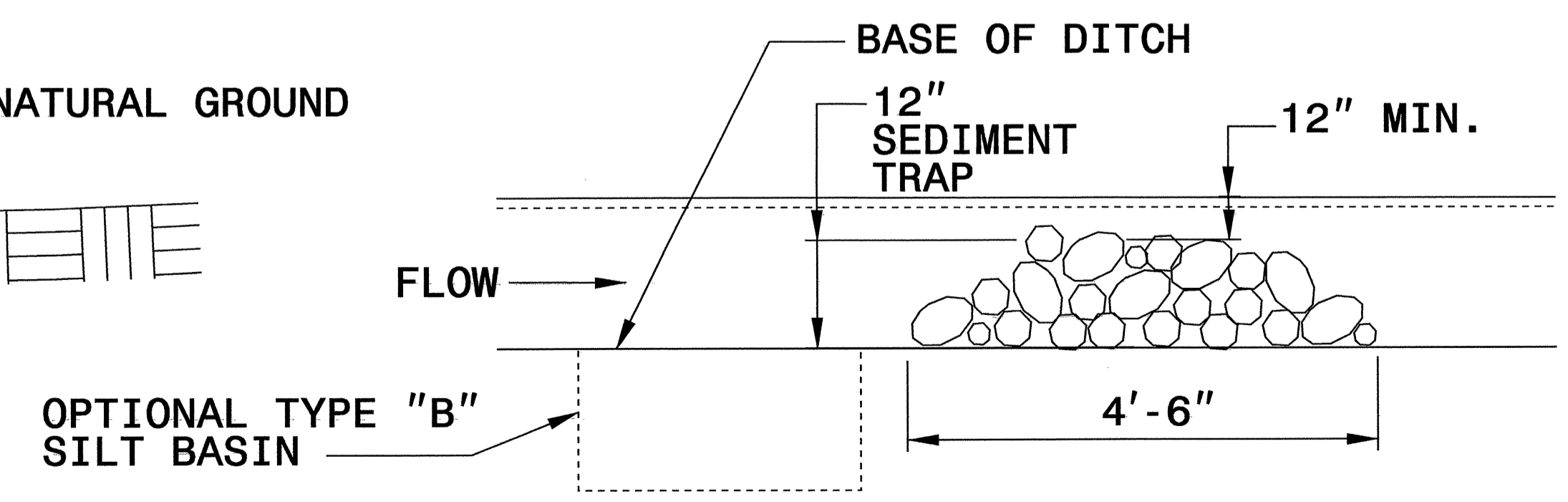
THE ENGINEER MAY DIRECT THE OPTION OF CLASS "A" STONE FOR SITES HAVING LESS THAN ONE (1) ACRE DRAINAGE AREA AND A DITCH GRADE LESS THAN 3%.



CROSS SECTION VEE DITCH



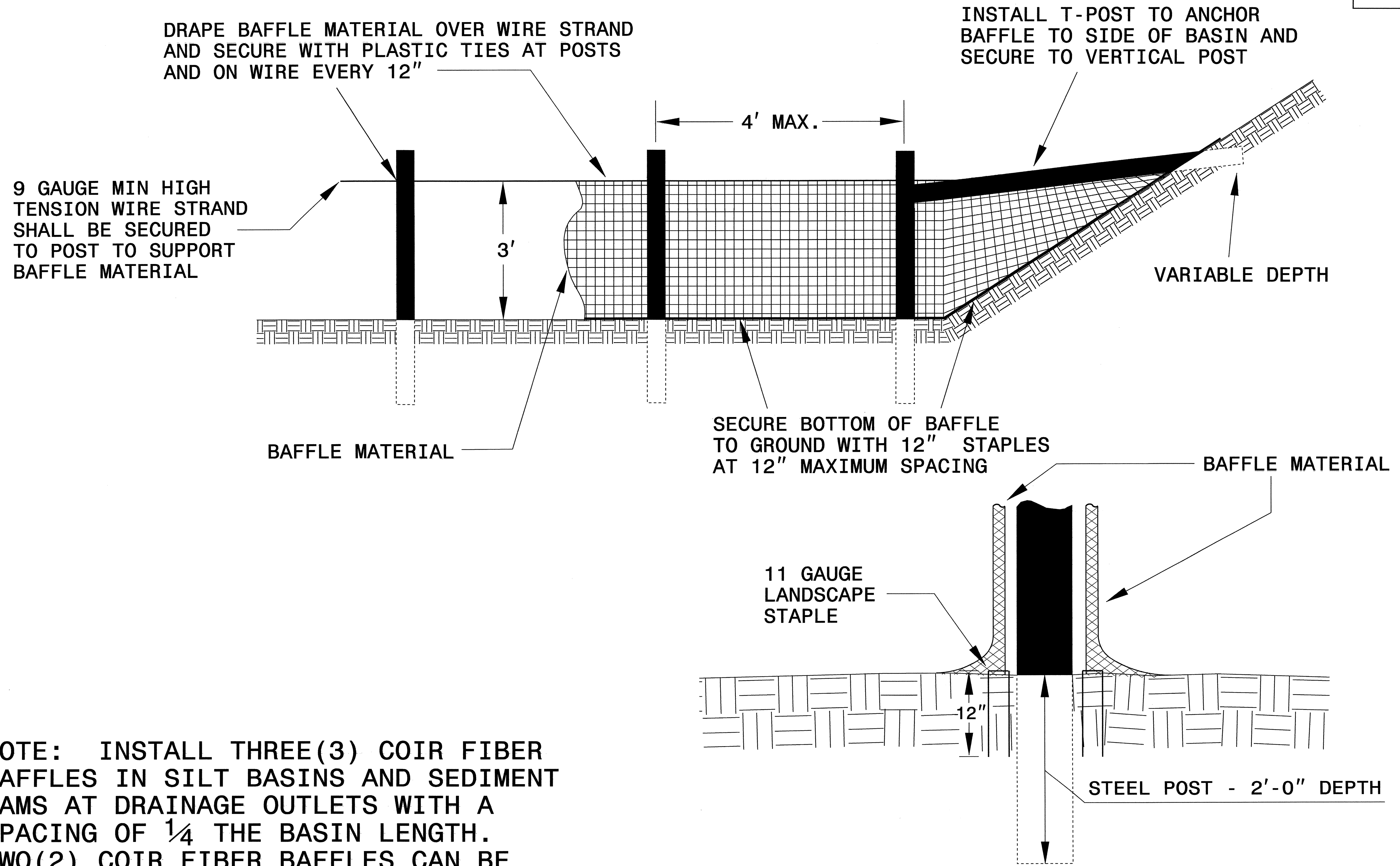
CROSS SECTION TRAPEZOIDAL DITCH



ELEVATION VIEW

PROJECT REFERENCE NO. B-4209	SHEET NO. EC-2A
RW SHEET NO.	
ROADWAY DESIGN ENGINEER	HYDRAULICS ENGINEER

COIR FIBER BAFFLE DETAIL

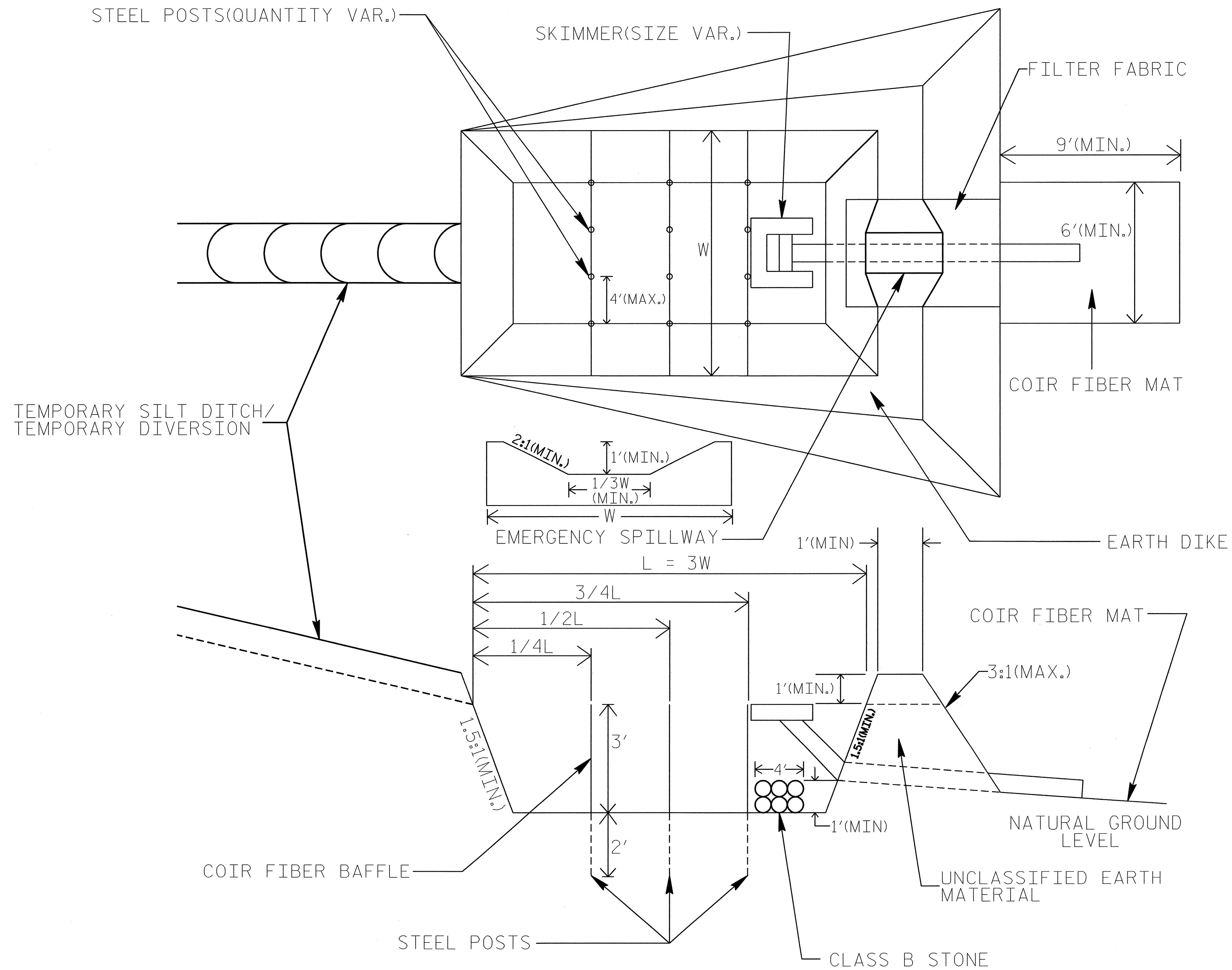


NOTE: INSTALL THREE (3) COIR FIBER BAFFLES IN SILT BASINS AND SEDIMENT DAMS AT DRAINAGE OUTLETS WITH A SPACING OF $\frac{1}{4}$ THE BASIN LENGTH. TWO (2) COIR FIBER BAFFLES CAN BE INSTALLED IN SILT BASINS AND DAMS LESS THAN 20 FT. IN LENGTH WITH A SPACING OF $\frac{1}{3}$ THE BASIN LENGTH.

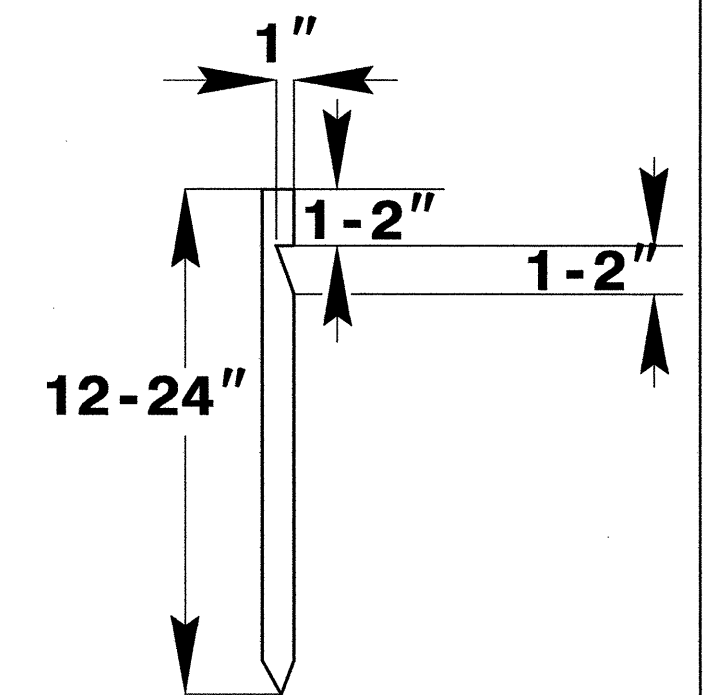
BAFFLE MATERIAL SHALL BE SECURED TO THE BOTTOM AND SIDES OF BASIN USING 12" LANDSCAPE STAPLES

SKIMMER BASIN WITH BAFFLES DETAIL

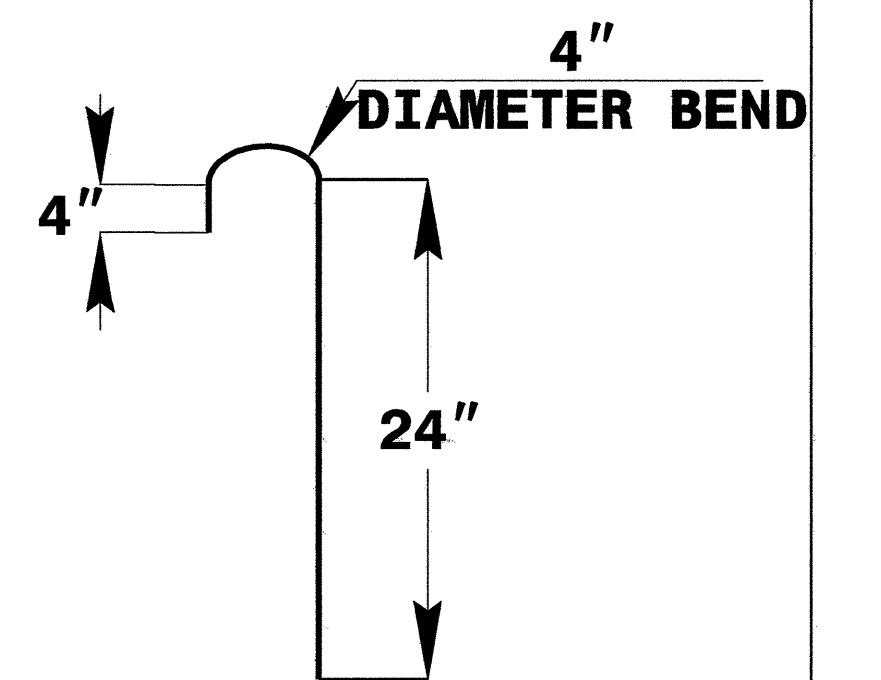
PROJECT REFERENCE NO. B-4209	SHEET NO. EC-2B
RW SHEET NO.	
ROADWAY DESIGN ENGINEER	HYDRAULICS ENGINEER



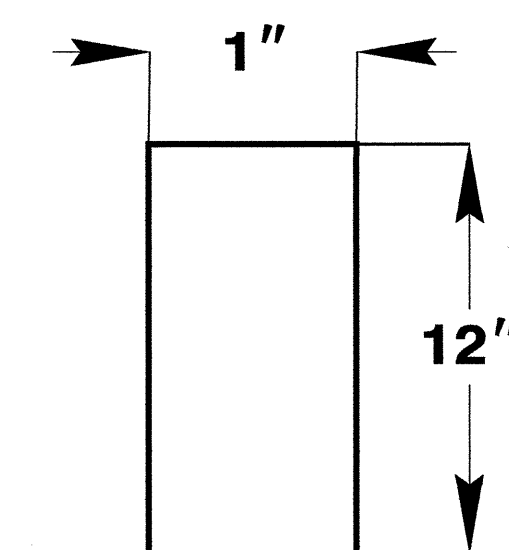
2" x 2" (nominal) WOODEN STAKE



#10 STEEL REINFORCEMENT BAR



1" (nominal) STAPLE



COIR FIBER MAT ANCHOR OPTIONS

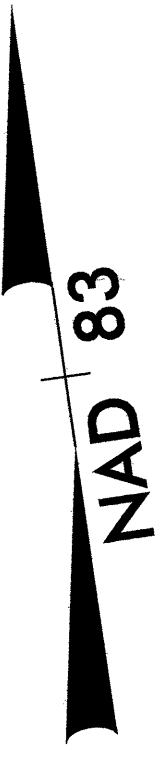
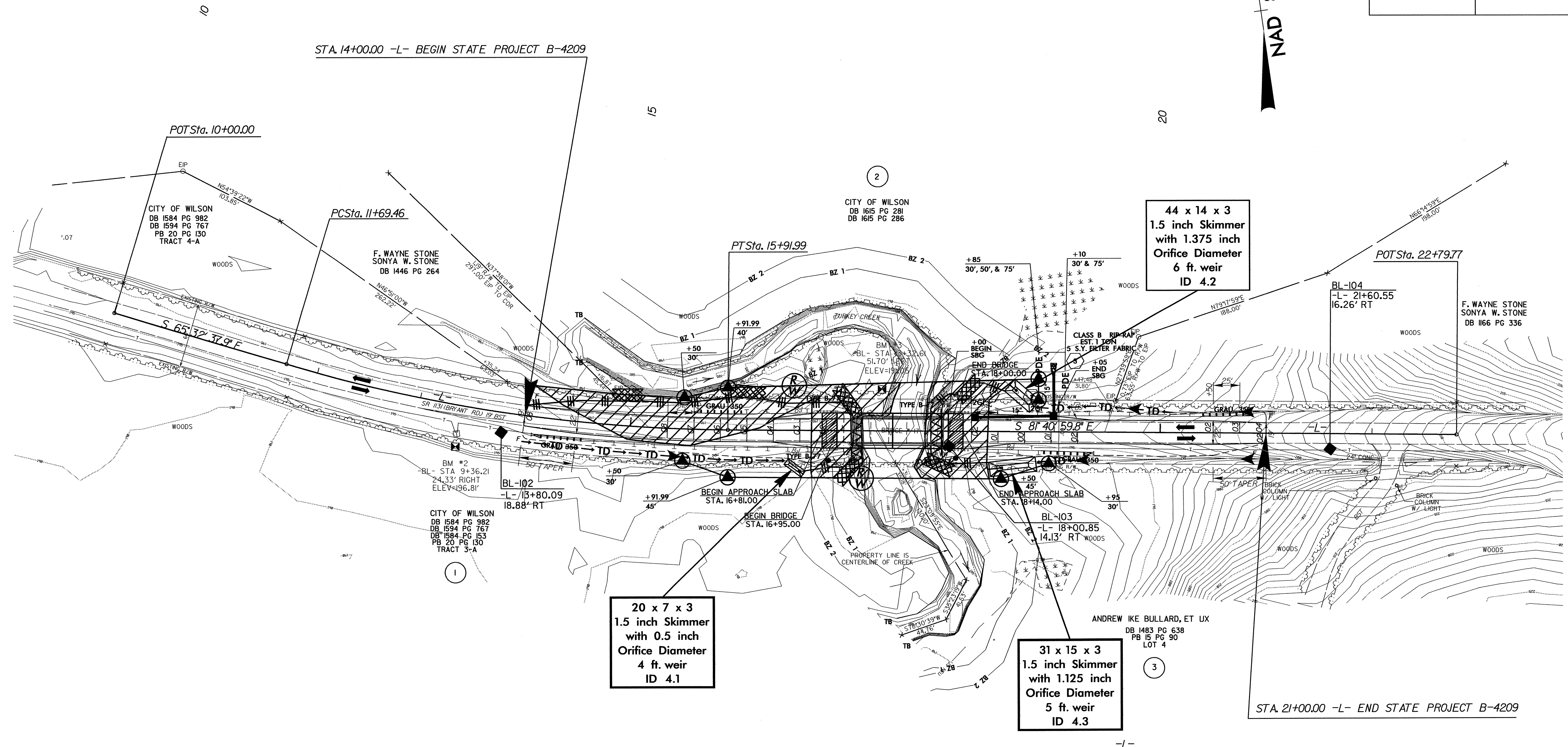
NOTES:

1. SEED AND PLACE MATTING FOR EROSION CONTROL ON SIDESLOPES.
2. LIMIT EARTH DIKE HEIGHT TO 5 FT.

PROJECT REFERENCE NO.	SHEET NO.
B-4209	EC-4/CONST.A
RW SHEET NO.	
ROADWAY DESIGN ENGINEER	HYDRAULICS ENGINEER

REVISIONS
 R/W REV: REVISING ROW & PDE ON PARCELS 1 (CITY OF WILSON), 2 (CITY OF WILSON), & 3 (ANDREW IKE BULLARD, ET UX) 8-21-07 TFD
 R/W REV: REVISING EXISTING RIGHT OF WAY OFFSETS FOR PARCEL 1 (CITY OF WILSON), PARCEL 2 (CITY OF WILSON), & PARCEL 3 (ANDREW IKE BULLARD, ET UX) 12-13-07 RWB

8/17/99
 08-FEB-2008 07:23
 c:\hipp\projects\164209\environmental\design\14209_ec_psh.dgn
 AT: RENV23813



CLEARING AND GRUBBING
EROSION CONTROL FOR
CONSTRUCTION SHEET 4

NOTE:
PLACE TEMPORARY ROCK SEDIMENT DAMS TYPE - B
AND TEMPORARY ROCK SILT CHECKS TYPE - A AT
DRAINAGE OUTLETS.

ENVIRONMENTALLY SENSITIVE AREA
SEE PROJECT SPECIAL PROVISIONS

31 x 15 x 3
1.5 inch Skimmer
with 1.125 inch
Orifice Diameter
5 ft. weir
ID 4.3

44 x 14 x 3
1.5 inch Skimmer
with 1.375 inch
Orifice Diameter
6 ft. weir
ID 4.2

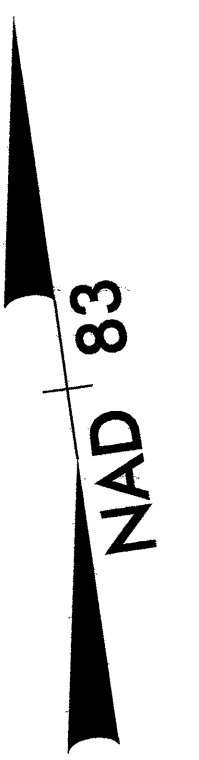
20 x 7 x 3
1.5 inch Skimmer
with 0.5 inch
Orifice Diameter
4 ft. weir
ID 4.1

-L-
PI Sta 13+82.13
Δ = 16' 08" 21.9" (LT)
D = 3' 49" 11.0"
L = 422.53'
T = 212.67'
R = 1,500.00'
RO = 200'
SE = .08

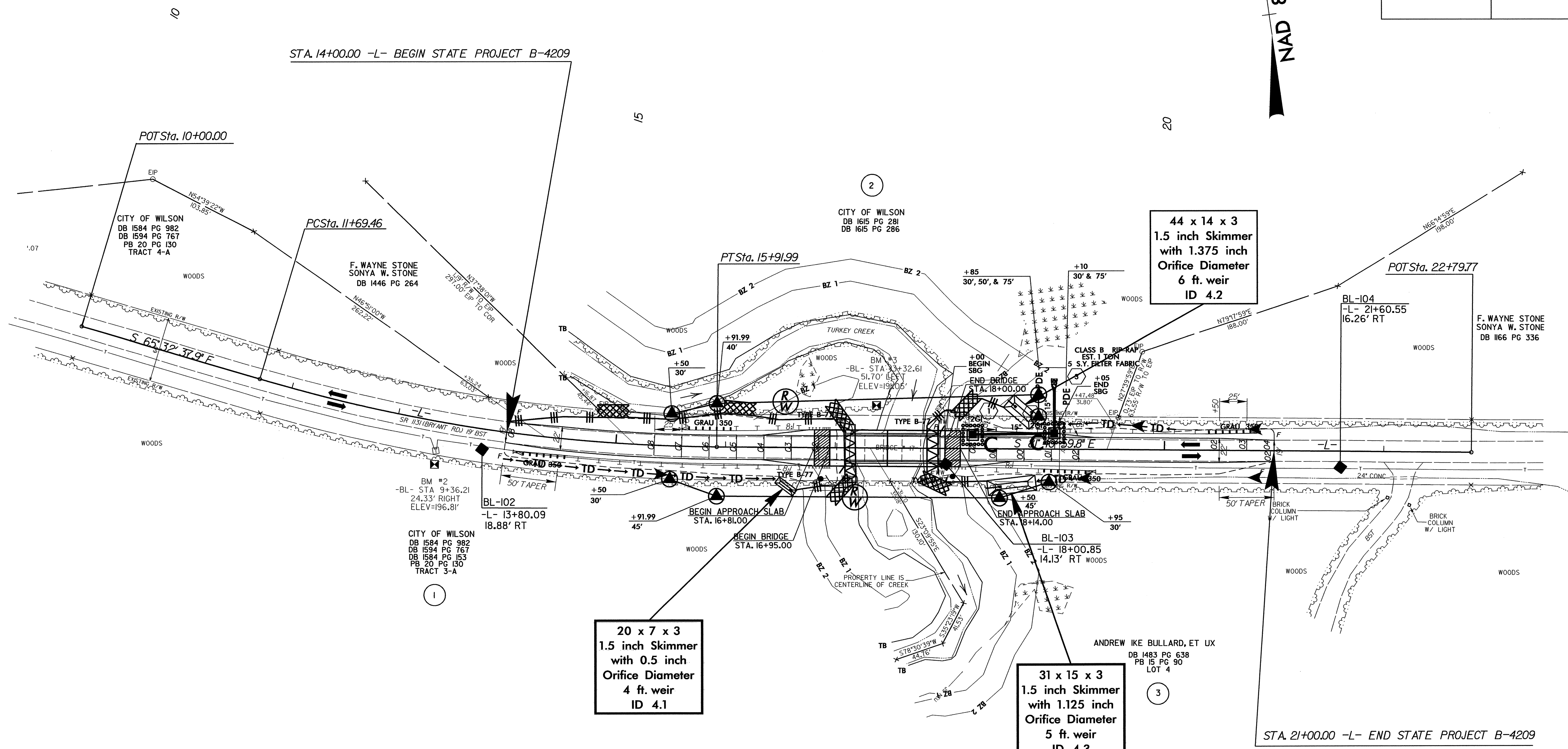
NOTE:
UTILIZE TEMPORARY ROCK SILT CHECK TYPE - A
AS STILLING BASIN WHERE APPLICABLE.

SBG: SHOULDER BERM GUTTER

PROJECT REFERENCE NO. B-4209	SHEET NO. EC-5/CONST.4
RW SHEET NO.	
ROADWAY DESIGN ENGINEER	HYDRAULICS ENGINEER



REVISIONS
 R/W REV.: REVISING ROW & PDE ON PARCELS 1 (CITY OF WILSON), 2 (CITY OF WILSON), & 3 (ANDREW IKE BULLARD, ET UX) 8-21-07 TFD
 R/W REV.: REVISING EXISTING RIGHT OF WAY OFFSETS FOR PARCEL 1 (CITY OF WILSON), PARCEL 2 (CITY OF WILSON), & PARCEL 3 (ANDREW IKE BULLARD, ET UX) 12-13-07 RWB



08-FEB-2008 07:24
 g:\tipp\projects\4209\environmental\design\4209_ec_psh.dgn
 AT: REN231813

NOTE:
UTILIZE TEMPORARY ROCK SILT CHECK TYPE - A AS STILLING BASIN WHERE APPLICABLE.