

UTILITIES BY OTHERS

NOTE:  
ALL PROPOSED UTILITY WORK  
SHOWN ON THIS SHEET WILL  
BE DONE BY OTHERS

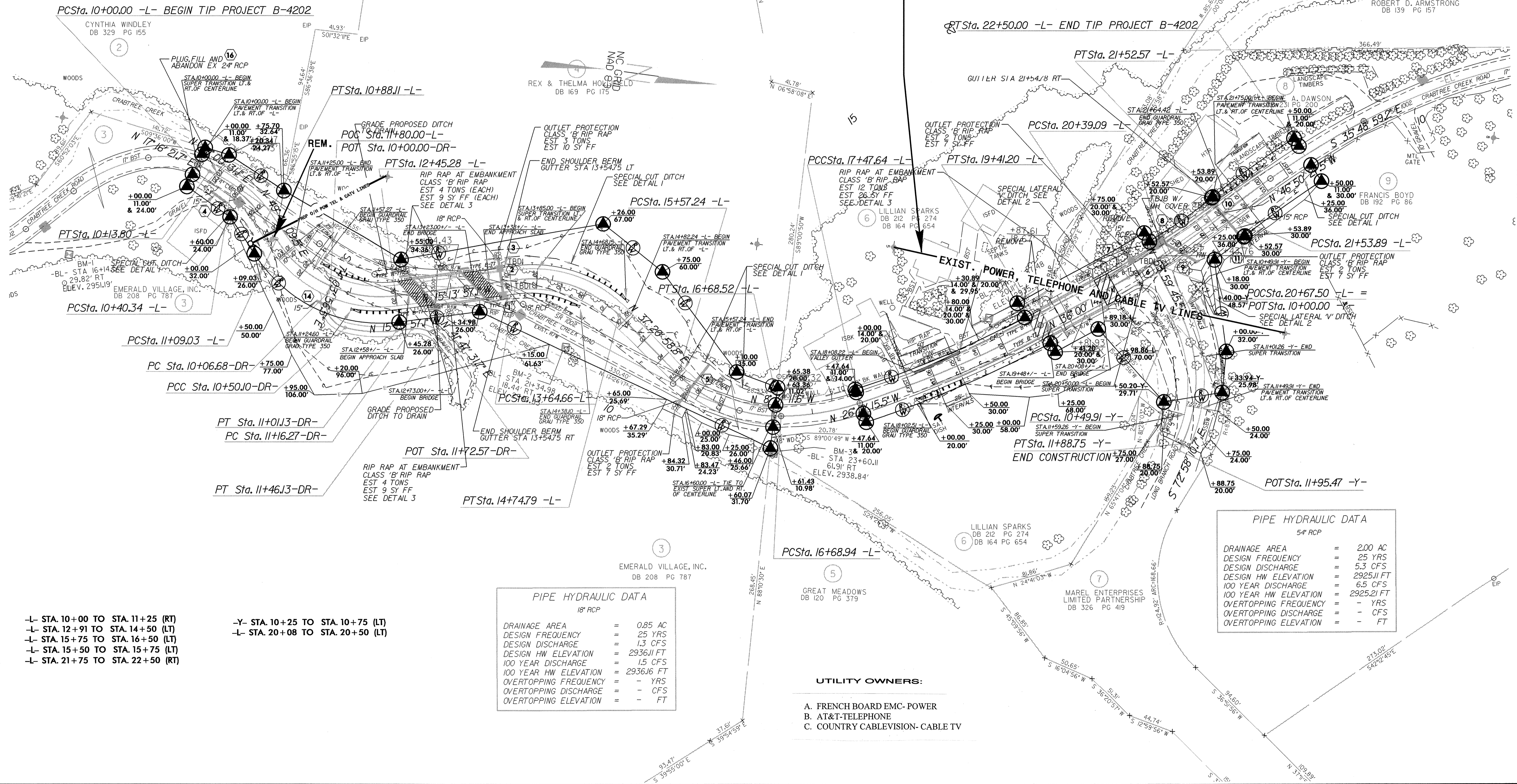
PI Sta 10+06.92 Δ = 9° 44' 09.5" (RT) D = 70' 32' 00.3" L = 13.80' T = 6.92' R = 81.23'	PI Sta 11+85.56 Δ = 65° 03' 06.7" (LT) D = 47' 44' 47.3" L = 136.24' T = 76.52' R = 120.00'	PI Sta 16+16.06 Δ = 45° 52' 10.3" (LT) D = 41' 13' 11.9" L = 111.28' T = 58.82' R = 139.00'	PI Sta 17+08.61 Δ = 17° 39' 03.9" (LT) D = 22' 25' 44.9" L = 78.70' T = 39.66' R = 255.45'	PI Sta 22+35.55 Δ = 1° 01' 28.3" (RT) D = 6' 46' 15.1" L = 162.82' T = 81.66' R = 846.21'
--	--	--	---	--

PI Sta 11+24.75 Δ = 53° 02' 03.9" (RT) D = 38' 11' 49.9" L = 138.84' T = 74.84' R = 150.00'
--

PI Sta 10+64.54 Δ = 22° 48' 38.4" (RT) D = 47' 44' 47.3" L = 47.77' T = 24.21' R = 120.00'	PI Sta 14+23.95 Δ = 52° 34' 55.9" (RT) D = 47' 44' 47.3" L = 110.13' T = 59.28' R = 120.00'	PI Sta 18+44.66 Δ = 9° 49' 59.0" (LT) D = 5' 04' 48.2" L = 193.56' T = 97.02' R = 1127.86'	PI Sta 20+96.00 Δ = 10° 50' 12.9" (LT) D = 9' 32' 57.5" L = 113.48' T = 56.91' R = 600.00'
---	--	---	---

PI Sta 10+36.21 Δ = 99° 30' 29.6" (LT) D = 229' 10' 59.2" L = 43.42' T = 29.54' R = 25.00'	PI Sta 11+32.57 Δ = 57° 01' 28.8" (RT) D = 190' 59' 09.4" L = 29.86' T = 16.30' R = 30.00'	PI Sta 10+75.92 Δ = 21° 39' 31.0" (LT) D = 42' 26' 28.7" L = 51.03' T = 25.82' R = 135.00'
---	---	---

THE EXISTING POWER, TELEPHONE  
AND CABLE TV LINES TO BE TEMPORARILY REMOVED  
DURING THE PROPOSED BRIDGE CONSTRUCTION



- L- STA. 10+00 TO STA. 11+25 (RT)
- L- STA. 12+91 TO STA. 14+50 (LT)
- L- STA. 15+75 TO STA. 16+50 (LT)
- L- STA. 15+50 TO STA. 15+75 (LT)
- L- STA. 21+75 TO STA. 22+50 (RT)

- Y- STA. 10+25 TO STA. 10+75 (LT)
- L- STA. 20+08 TO STA. 20+50 (LT)

DRAINAGE AREA	=	0.85 AC
DESIGN FREQUENCY	=	25 YRS
DESIGN DISCHARGE	=	1.3 CFS
DESIGN HW ELEVATION	=	2936.11 FT
100 YEAR DISCHARGE	=	1.5 CFS
100 YEAR HW ELEVATION	=	2936.16 FT
OVERTOPPING FREQUENCY	=	- YRS
OVERTOPPING DISCHARGE	=	- CFS
OVERTOPPING ELEVATION	=	- FT

DRAINAGE AREA	=	2.00 AC
DESIGN FREQUENCY	=	25 YRS
DESIGN DISCHARGE	=	5.3 CFS
DESIGN HW ELEVATION	=	2925.11 FT
100 YEAR DISCHARGE	=	6.5 CFS
100 YEAR HW ELEVATION	=	2925.21 FT
OVERTOPPING FREQUENCY	=	- YRS
OVERTOPPING DISCHARGE	=	- CFS
OVERTOPPING ELEVATION	=	- FT

- UTILITY OWNERS:
- A. FRENCH BOARD EMC- POWER
  - B. AT&T-TELEPHONE
  - C. COUNTRY CABLEVISION- CABLE TV

11-MAR-2008 12:01 PM C:\p01\proj\B-4202-rdy-1.dwg