

PROJECT REFERENCE NO.	SHEET NO.
U-4755	EC-1
RW SHEET NO.	
ROADWAY DESIGN ENGINEER	HYDRAULICS ENGINEER

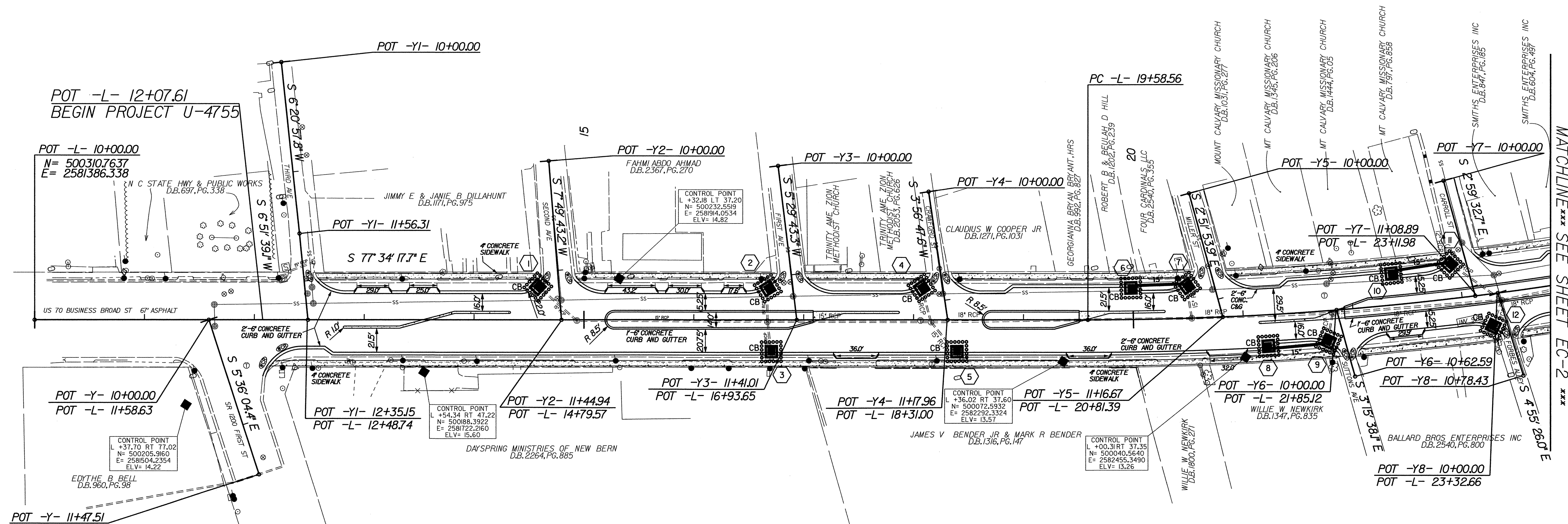
EROSION AND SEDIMENT CONTROL MEASURES

Std. #	Description	Symbol
1632.01	Type C	

NOTES:

- (1) Any deviation from options given will require prior approval by the Engineer.
- (2) Additional Erosion Control devices may need to be installed as directed by the Engineer.
- (3) 2006 Standard Specifications will be used on this project.

PI Sta 22+53.53
 $\Delta = 11^{\circ}45'30.2" (LT)$
 $D = 2^{\circ}00'00.8"$
 $L = 587.86'$
 $T = 294.98'$
 $R = 2,864.62'$



ALL STREET RADII 37FT
UNLESS OTHERWISE NOTED

8/17/99

07-APR-2009 15:07
 g:\p\projects\road\road\ec\ec1.dgn
 b:\p\projects\road\road\ec\ec1.dgn
 road\road\ec\ec1.dgn
 b:\p\projects\road\road\ec\ec1.dgn
 b:\p\projects\road\road\ec\ec1.dgn

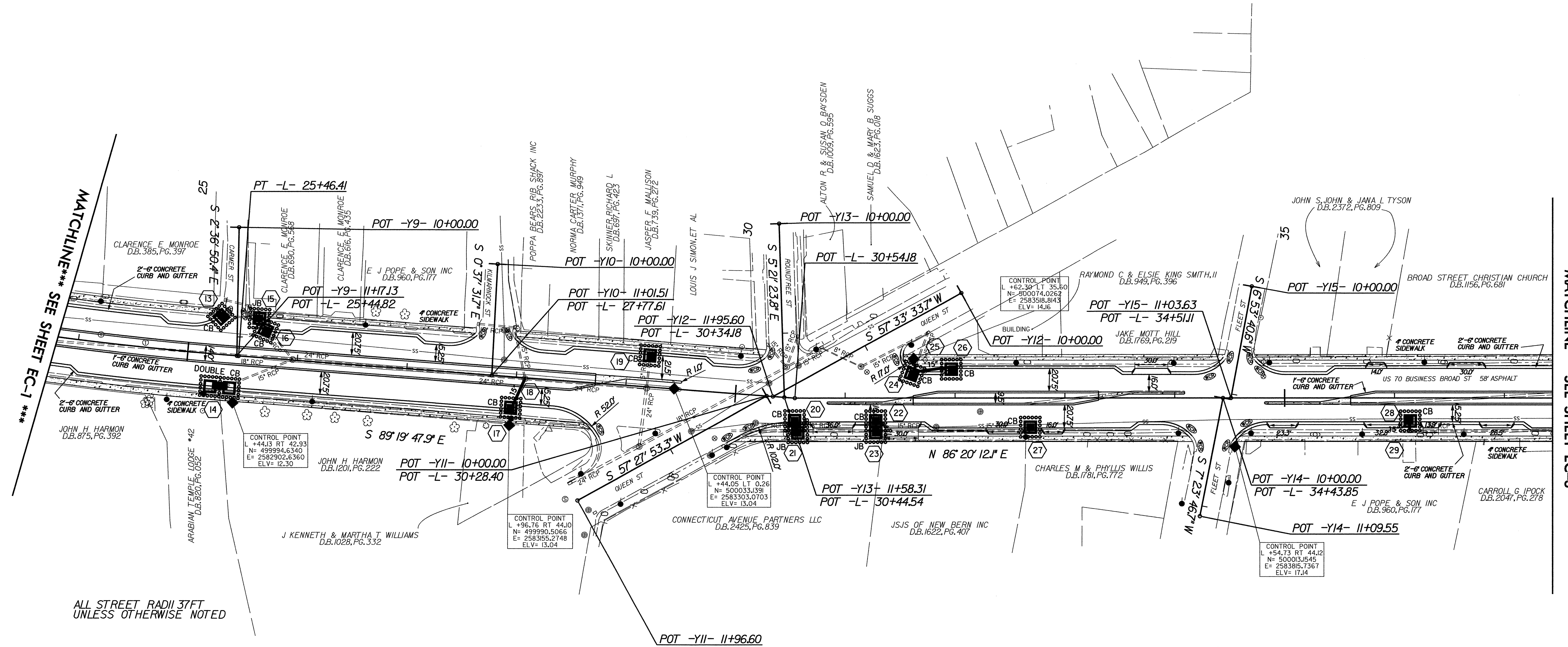
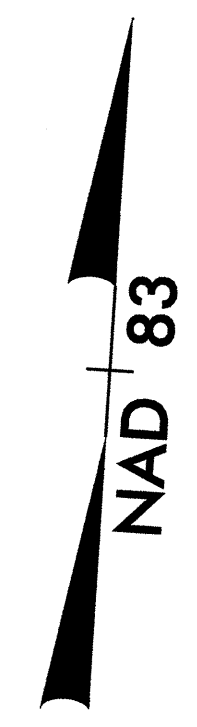
PROJECT REFERENCE NO.		SHEET NO.	
U-4755		EC-2	
RW SHEET NO.			
ROADWAY DESIGN ENGINEER		HYDRAULICS ENGINEER	

EROSION AND SEDIMENT CONTROL MEASURES

Std. #	Description	Symbol
1632.01	Type C	

NOTES:

- (1) Any deviation from options given will require prior approval by the Engineer.
- (2) Additional Erosion Control devices may need to be installed as directed by the Engineer.
- (3) 2006 Standard Specifications will be used on this project.



ALL STREET RADII 37 FT
UNLESS OTHERWISE NOTED

MATCHLINE** SEE SHEET EC-1 **

MATCHLINE** SEE SHEET EC-3 **

8/17/99

PROJECT REFERENCE NO.	SHEET NO.
U-4755	EC-3
RW SHEET NO.	
ROADWAY DESIGN ENGINEER	HYDRAULICS ENGINEER

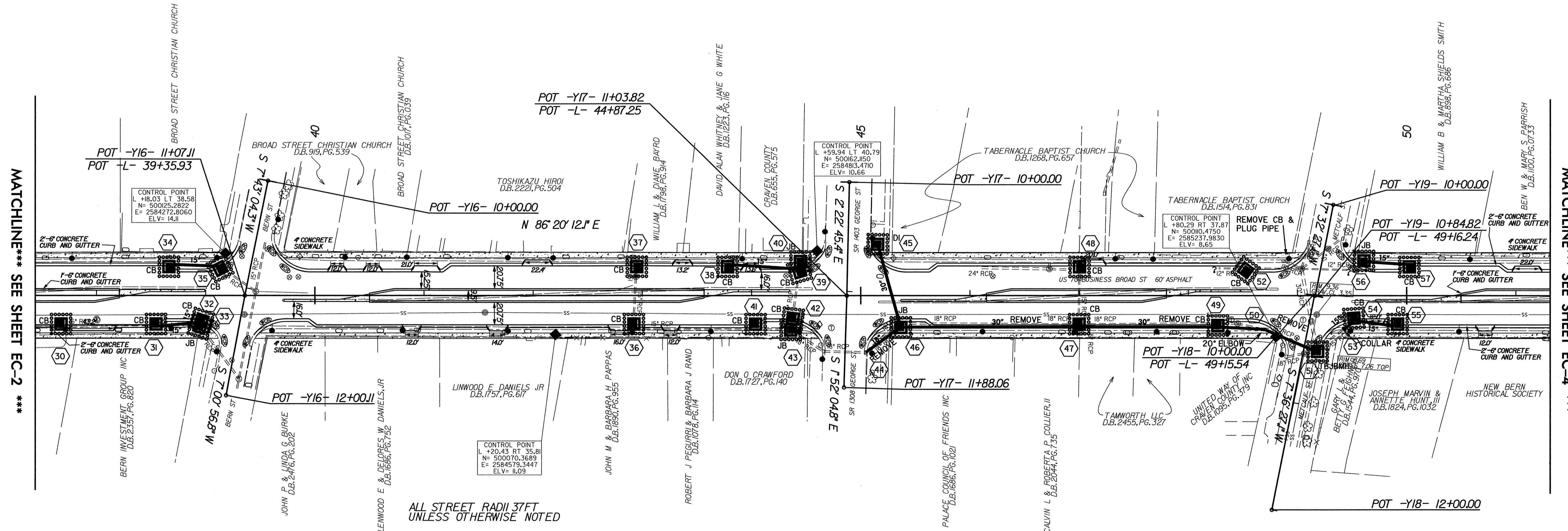
EROSION AND SEDIMENT CONTROL MEASURES

Std. #	Description	Symbol
1632.01	Type C	

NOTES:

- (1) Any deviation from options given will require prior approval by the Engineer.
- (2) Additional Erosion Control devices may need to be installed as directed by the Engineer.
- (3) 2006 Standard Specifications will be used on this project.

NAD 83



MATCHLINE** SEE SHEET EC-2 **

MATCHLINE** SEE SHEET EC-4 **

ALL STREET RADII 37FT UNLESS OTHERWISE NOTED

DT-APR-2008 14:46 g:\projects\cra\01\broodst.dwg2\ddc2.psh_ec3.dgn

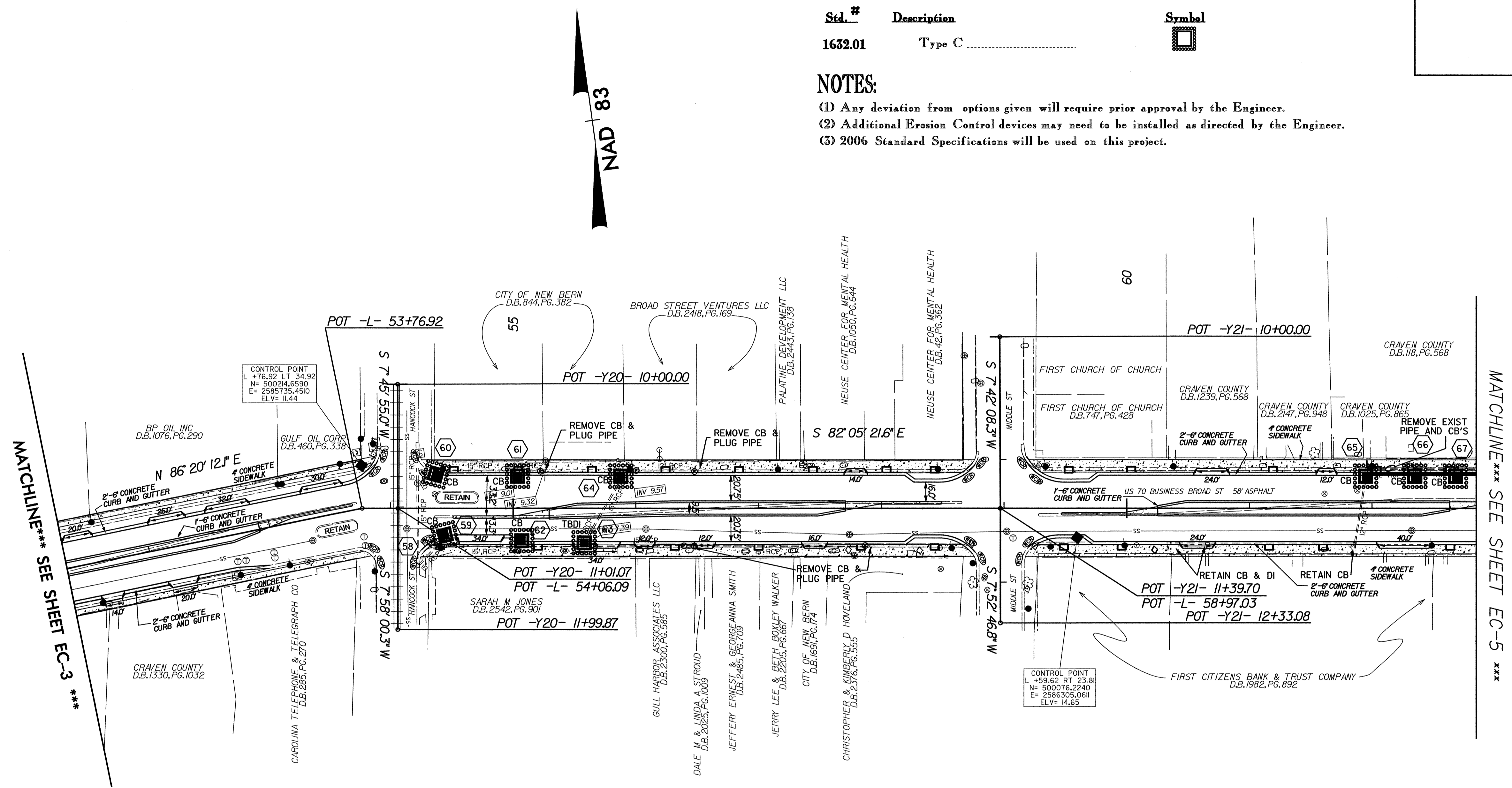
PROJECT REFERENCE NO. U-4755	SHEET NO. EC-4
RW SHEET NO.	
ROADWAY DESIGN ENGINEER	HYDRAULICS ENGINEER

EROSION AND SEDIMENT CONTROL MEASURES

Std. #	Description	Symbol
1632.01	Type C	

NOTES:

- (1) Any deviation from options given will require prior approval by the Engineer.
- (2) Additional Erosion Control devices may need to be installed as directed by the Engineer.
- (3) 2006 Standard Specifications will be used on this project.



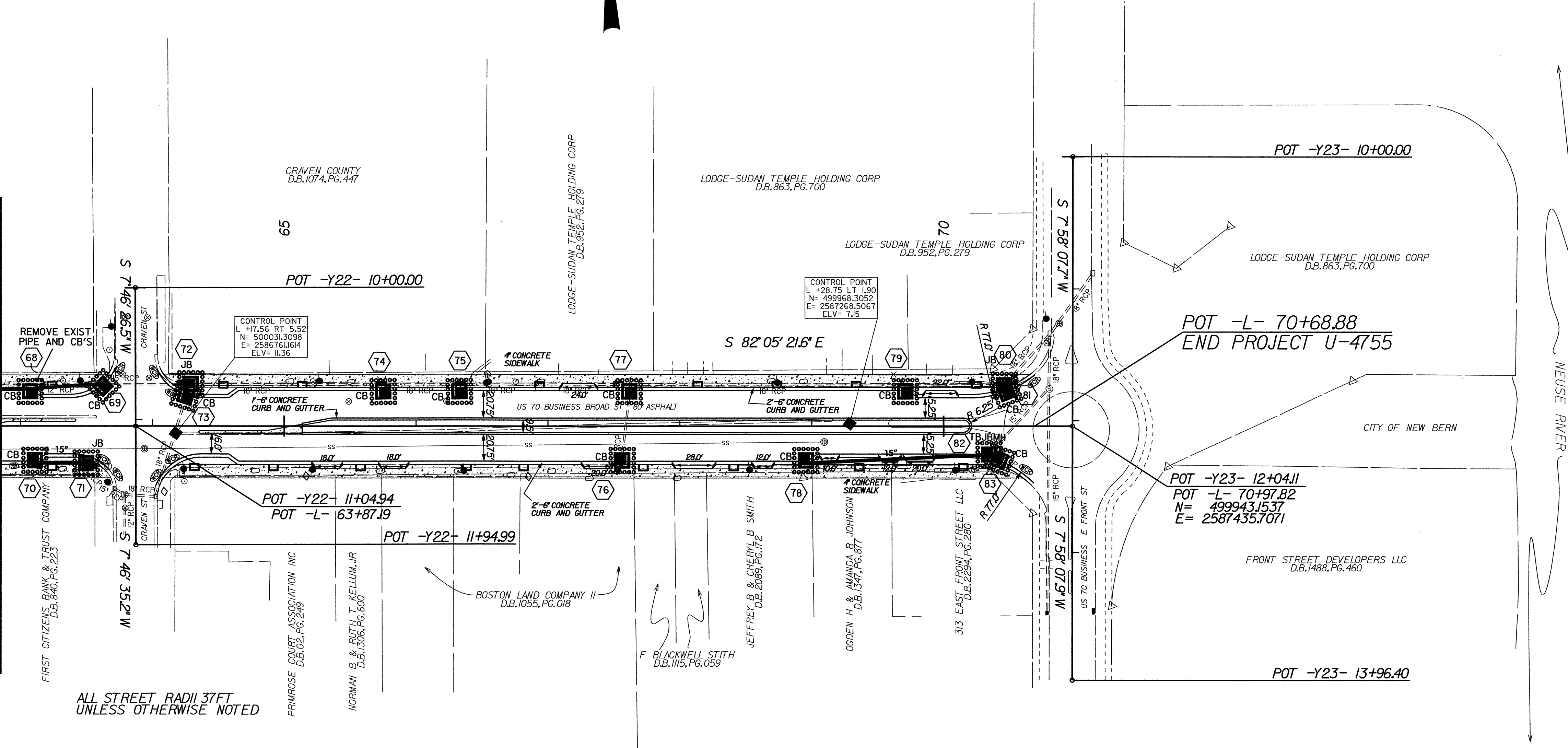
PROJECT REFERENCE NO.		SHEET NO.
U-4755		EC-5
RW SHEET NO.		
ROADWAY DESIGN ENGINEER	HYDRAULICS ENGINEER	

EROSION AND SEDIMENT CONTROL MEASURES

Std. #	Description	Symbol
1632.01	Type C	

- NOTES:**
- (1) Any deviation from options given will require prior approval by the Engineer.
 - (2) Additional Erosion Control devices may need to be installed as directed by the Engineer.
 - (3) 2006 Standard Specifications will be used on this project.

MATCHLINE*** SEE SHEET EC-4 ***



ALL STREET RADII 37FT UNLESS OTHERWISE NOTED