

**TIP PROJECT: B-4057**

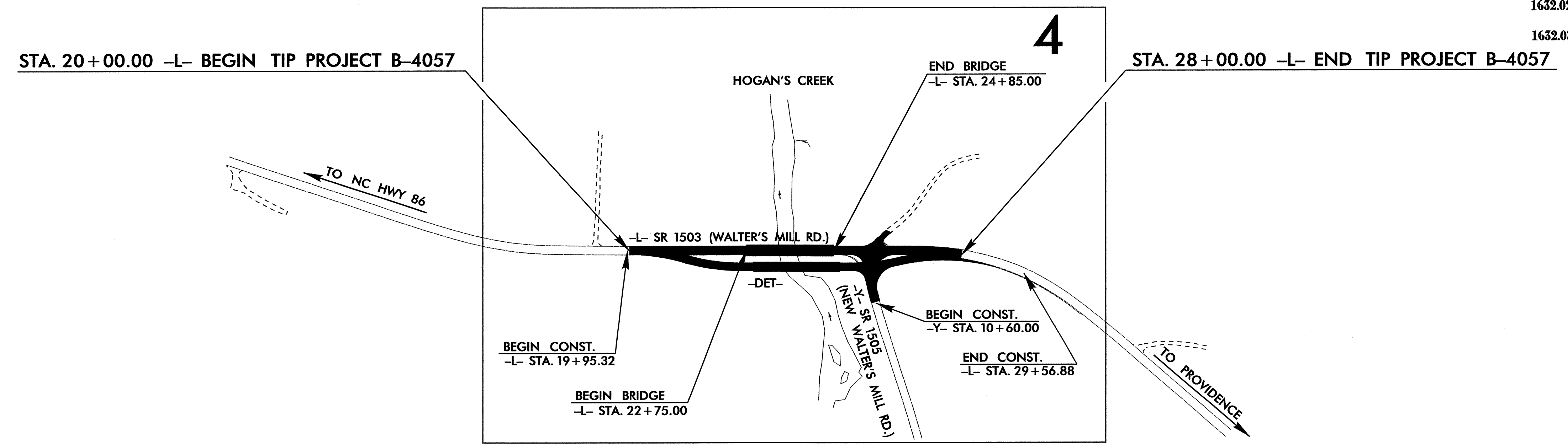
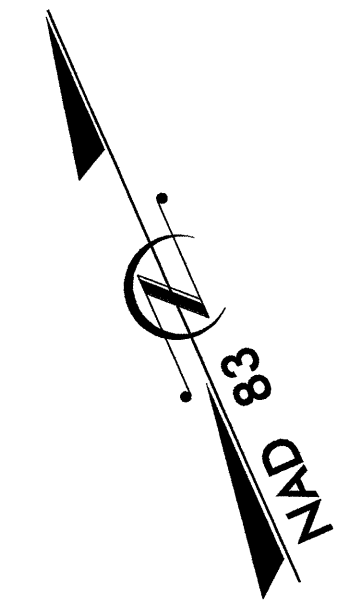
STATE OF NORTH CAROLINA  
DIVISION OF HIGHWAYS

PLAN FOR PROPOSED  
HIGHWAY EROSION CONTROL

**CASWELL COUNTY**

**LOCATION: BRIDGE NO. 39 OVER HOGAN'S CREEK  
ON SR 1503 (WALTER'S MILL ROAD)**

**TYPE OF WORK: GRADING, DRAINAGE, PAVING, GUARDRAIL,  
AND STRUCTURE**



STATE	STATE PROJECT REFERENCE NO.	SHEET NO.	TOTAL SHEETS
N.C.	B-4057	EC-1	
STATE PROJ. NO.	F.A. PROJ. NO.	DESCRIPTION	

**EROSION AND SEDIMENT CONTROL MEASURES**

Std. #	Description	Symbol
1630.03	Temporary Silt Ditch	TD
1630.05	Temporary Diversion	TD
1605.01	Temporary Silt Fence	III III III
1606.01	Special Sediment Control Fence	III III III
1622.01	Temporary Berms and Slope Drains	TD
1630.01	Riser Basin	⊙
1630.02	Silt Basin Type B	▨
1633.01	Temporary Rock Silt Check Type-A	▨
	Temporary Rock Silt Check Type-B	▨
	Wattle	⌒
1634.01	Temporary Rock Sediment Dam Type-A	▨
1634.02	Temporary Rock Sediment Dam Type-B	▨
1635.01	Rock Pipe Inlet Sediment Trap Type-A	⊙
1635.02	Rock Pipe Inlet Sediment Trap Type-B	⊙
1630.04	Stilling Basin	▨
	Rock Inlet Sediment Trap:	
1632.01	Type A	A
1632.02	Type B	B
1632.03	Type C	C
	Skimmer Basin	▨
	Tiered Skimmer Basin	▨
	Infiltration Basin	▨

**THIS PROJECT CONTAINS  
EROSION CONTROL PLANS  
FOR CLEARING AND  
GRUBBING PHASE OF  
CONSTRUCTION.**

**GRAPHIC SCALE**

0  
PLANS

0  
PROFILE (HORIZONTAL)

0  
PROFILE (VERTICAL)

ROADSIDE ENVIRONMENTAL UNIT  
DIVISION OF HIGHWAYS  
STATE OF NORTH CAROLINA

Prepared In the Office of:  
**ROADSIDE ENVIRONMENTAL UNIT**  
1 South Wilmington St.  
Raleigh, NC 27611  
**2006 STANDARD SPECIFICATIONS**

Roadway Standard Drawings

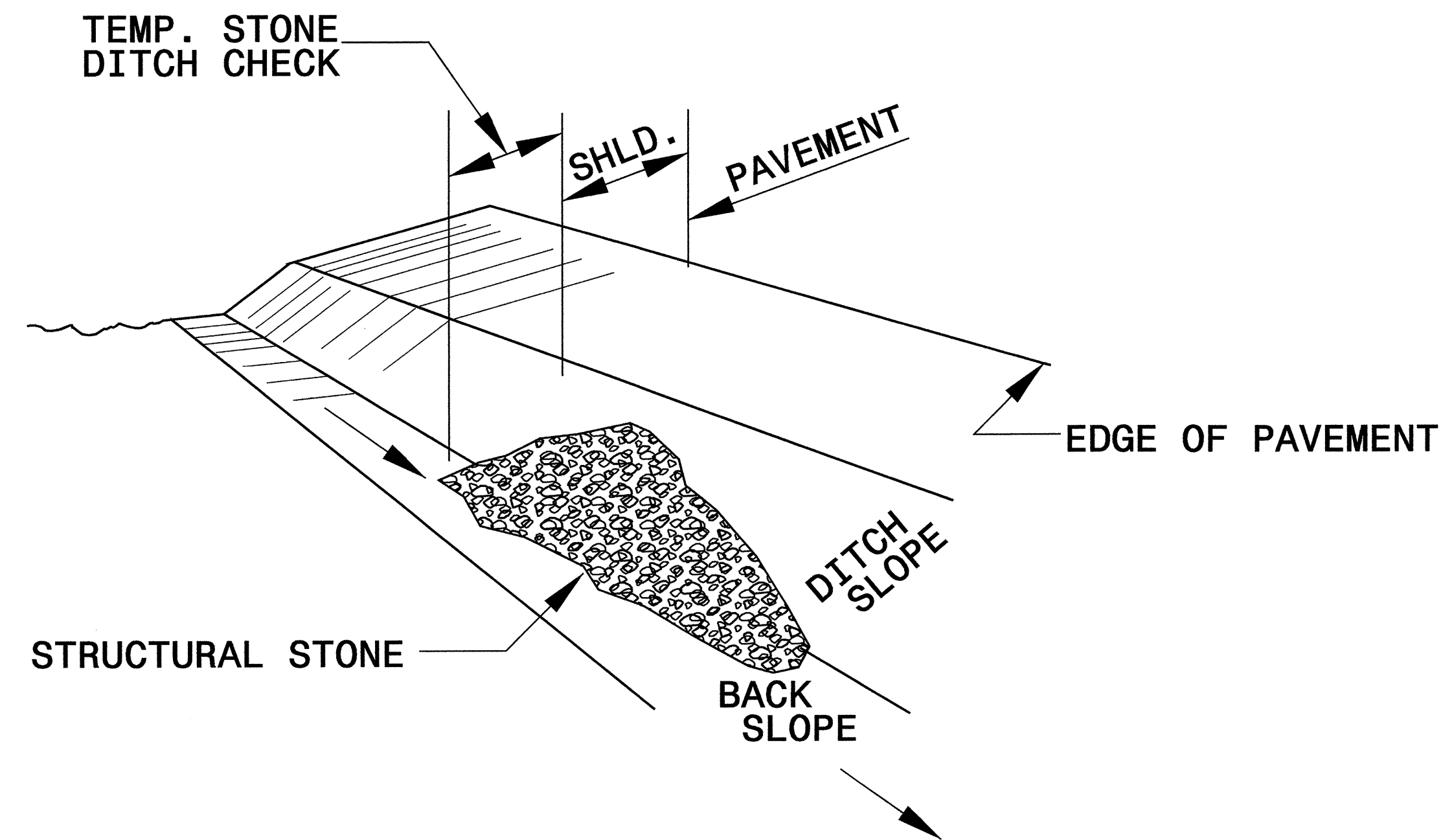
The following roadway english standards as appear in "Roadway Standard Drawings"- Roadway Design Unit - N. C. Department of Transportation - Raleigh, N. C., dated July 18, 2006 and the latest revision thereto are applicable to this project and by reference hereby are considered a part of these plans.

1605.01 Temporary Silt Fence	1632.03 Rock Inlet Sediment Trap Type C
1607.01 Gravel Construction Entrance	1633.01 Temporary Rock Silt Check Type A
1622.01 Temporary Berms and Slope Drains	1634.02 Temporary Rock Sediment Dam Type B
1630.05 Temporary Diversion	1635.02 Rock Pipe Inlet Sediment Trap Type B

20-FEB-2008 09:19  
\\s01\project\caswell\details\B-4057.ec.tsh.dgn

PROJECT REFERENCE NO. B-4057	SHEET NO. EC-2
RW SHEET NO.	
ROADWAY DESIGN ENGINEER	HYDRAULICS ENGINEER

# TEMPORARY ROCK SILT CHECK TYPE 'B' DETAIL

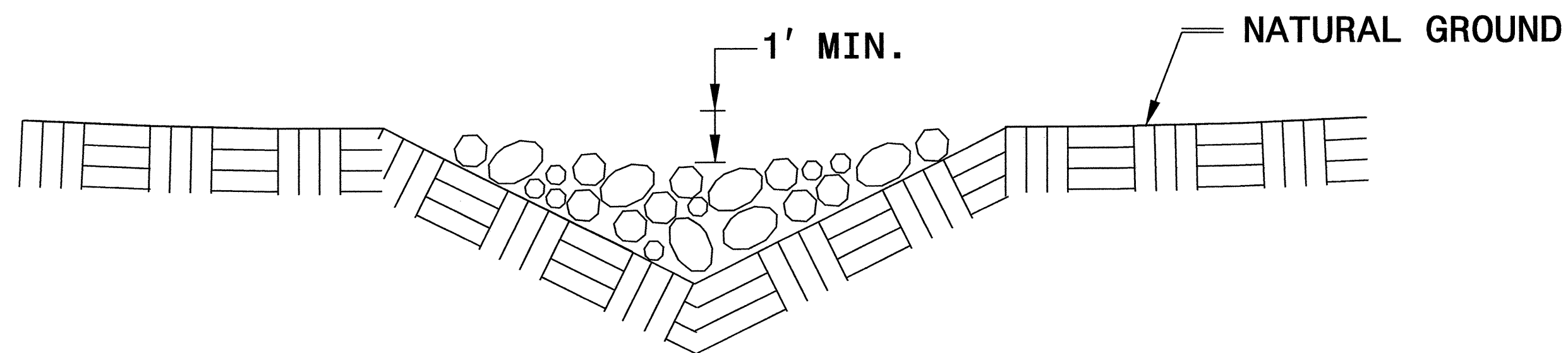


**ISOMETRIC VIEW**

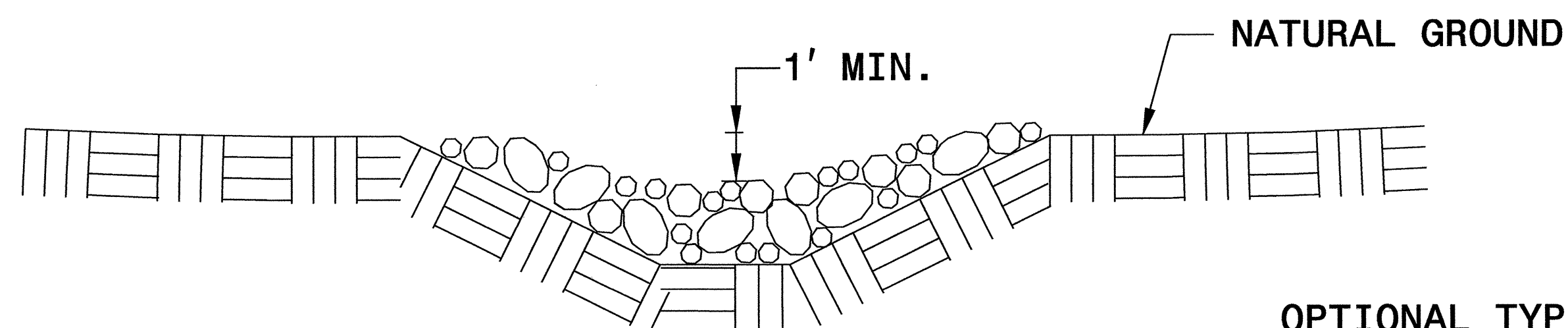
**NOTES:**

USE CLASS 'B' EROSION CONTROL STONE FOR STRUCTURAL STONE.

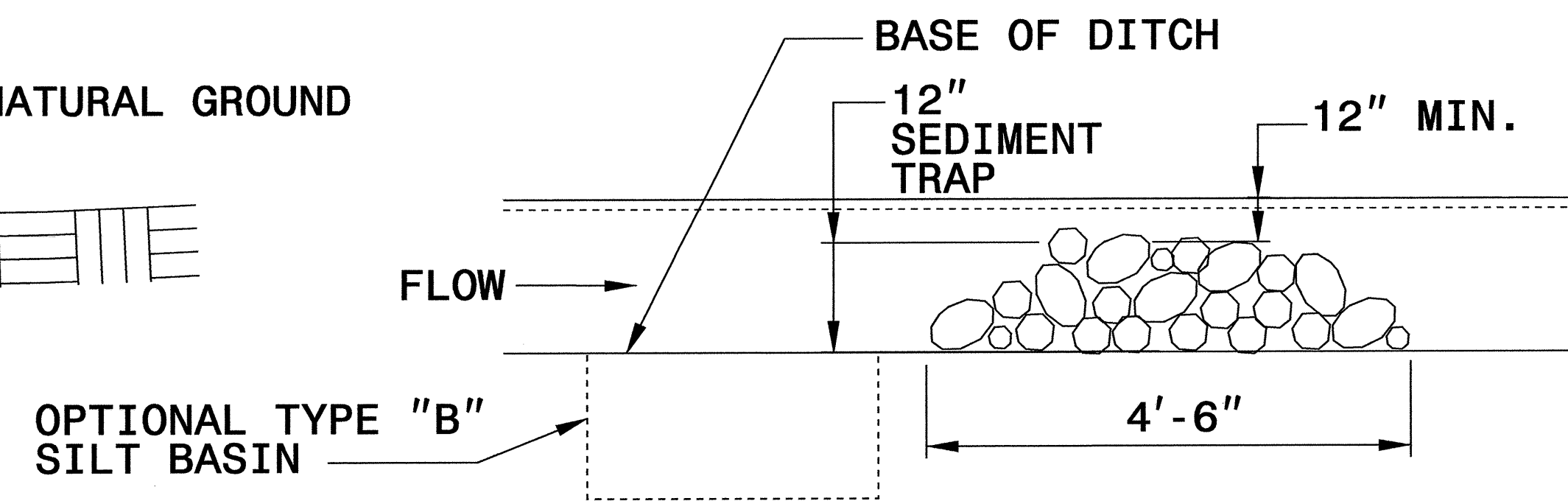
THE ENGINEER MAY DIRECT THE OPTION OF CLASS "A" STONE FOR SITES HAVING LESS THAN ONE (1) ACRE DRAINAGE AREA AND A DITCH GRADE LESS THAN 3%.



**CROSS SECTION VEE DITCH**



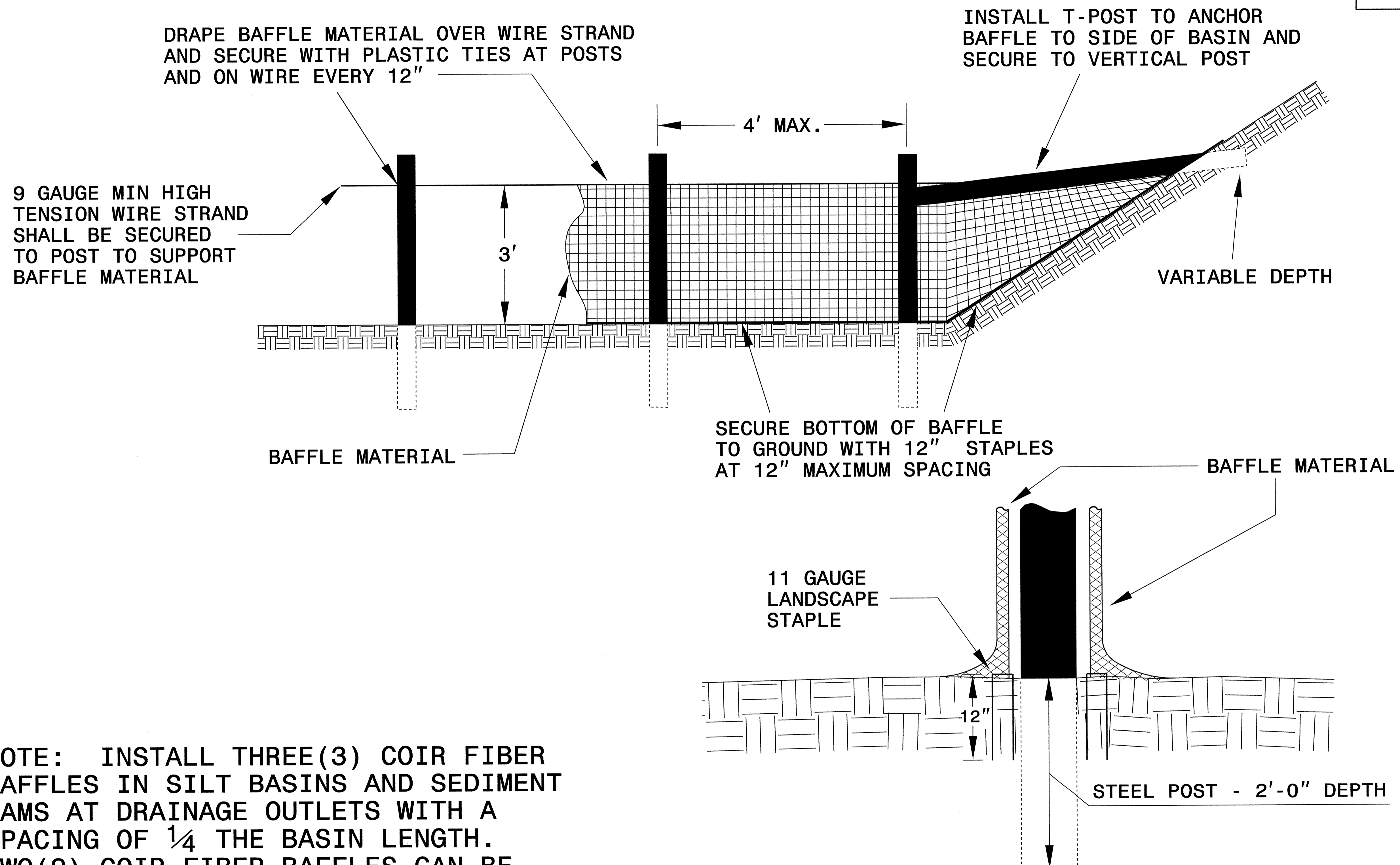
**CROSS SECTION TRAPEZOIDAL DITCH**



**ELEVATION VIEW**

PROJECT REFERENCE NO. B-4057	SHEET NO. EC-2A
RW SHEET NO.	
ROADWAY DESIGN ENGINEER	HYDRAULICS ENGINEER

# COIR FIBER BAFFLE DETAIL



NOTE: INSTALL THREE(3) COIR FIBER BAFFLES IN SILT BASINS AND SEDIMENT DAMS AT DRAINAGE OUTLETS WITH A SPACING OF  $\frac{1}{4}$  THE BASIN LENGTH. TWO(2) COIR FIBER BAFFLES CAN BE INSTALLED IN SILT BASINS AND DAMS LESS THAN 20 FT. IN LENGTH WITH A SPACING OF  $\frac{1}{3}$  THE BASIN LENGTH.

BAFFLE MATERIAL SHALL BE SECURED TO THE BOTTOM AND SIDES OF BASIN USING 12" LANDSCAPE STAPLES

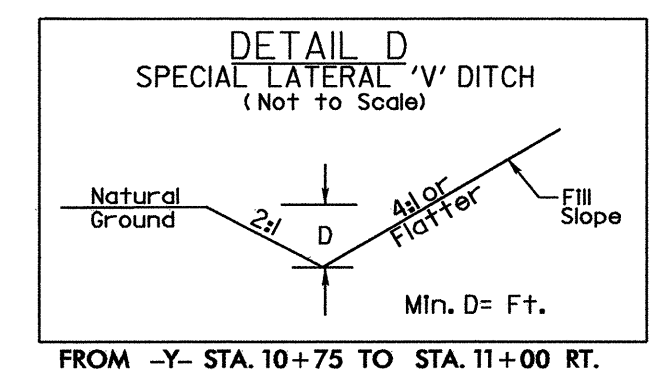
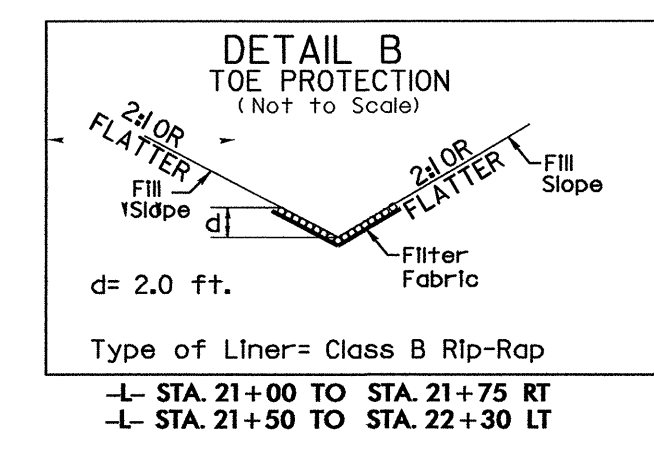
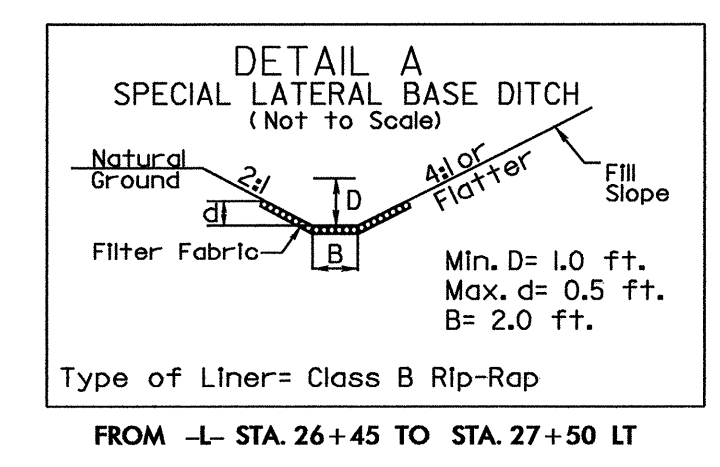


PROJECT REFERENCE NO.	SHEET NO.
B-4057	EC-4/CONST.4
RW SHEET NO.	HYDRAULICS ENGINEER
ROADWAY DESIGN ENGINEER	

**CLEARING AND GRUBBING  
EROSION CONTROL FOR  
CONSTRUCTION SHEET 4**

**NOTE:**  
PLACE TEMPORARY ROCK SEDIMENT DAMS TYPE - B  
AND TEMPORARY ROCK SILT CHECKS TYPE - A AT  
DRAINAGE OUTLETS.

**NOTE:**  
UTILIZE TEMPORARY ROCK SEDIMENT DAM TYPE - B  
AND TEMPORARY ROCK SILT CHECK TYPE - A  
AS STILLING BASIN WHERE APPLICABLE.



1  
SCOTT R. SMITH et al  
DB 471 PG 909

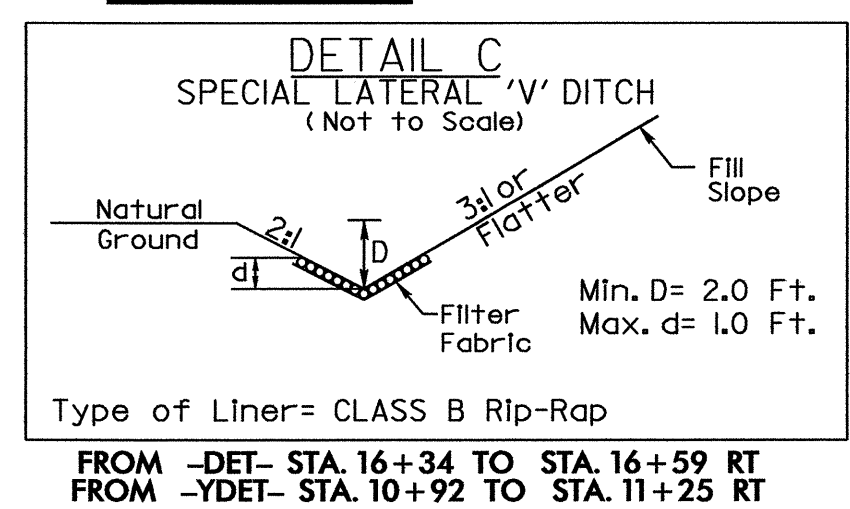
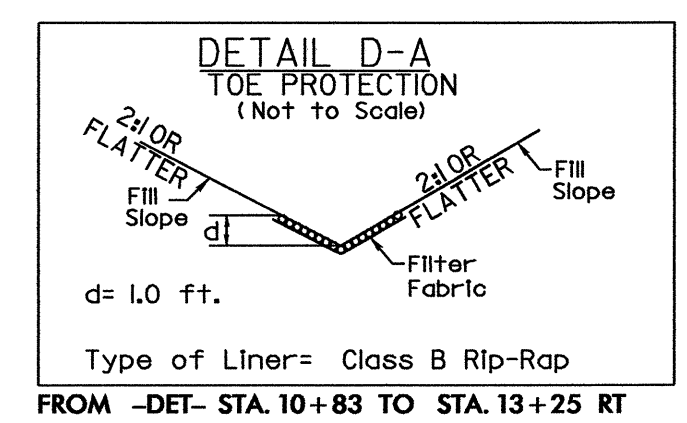
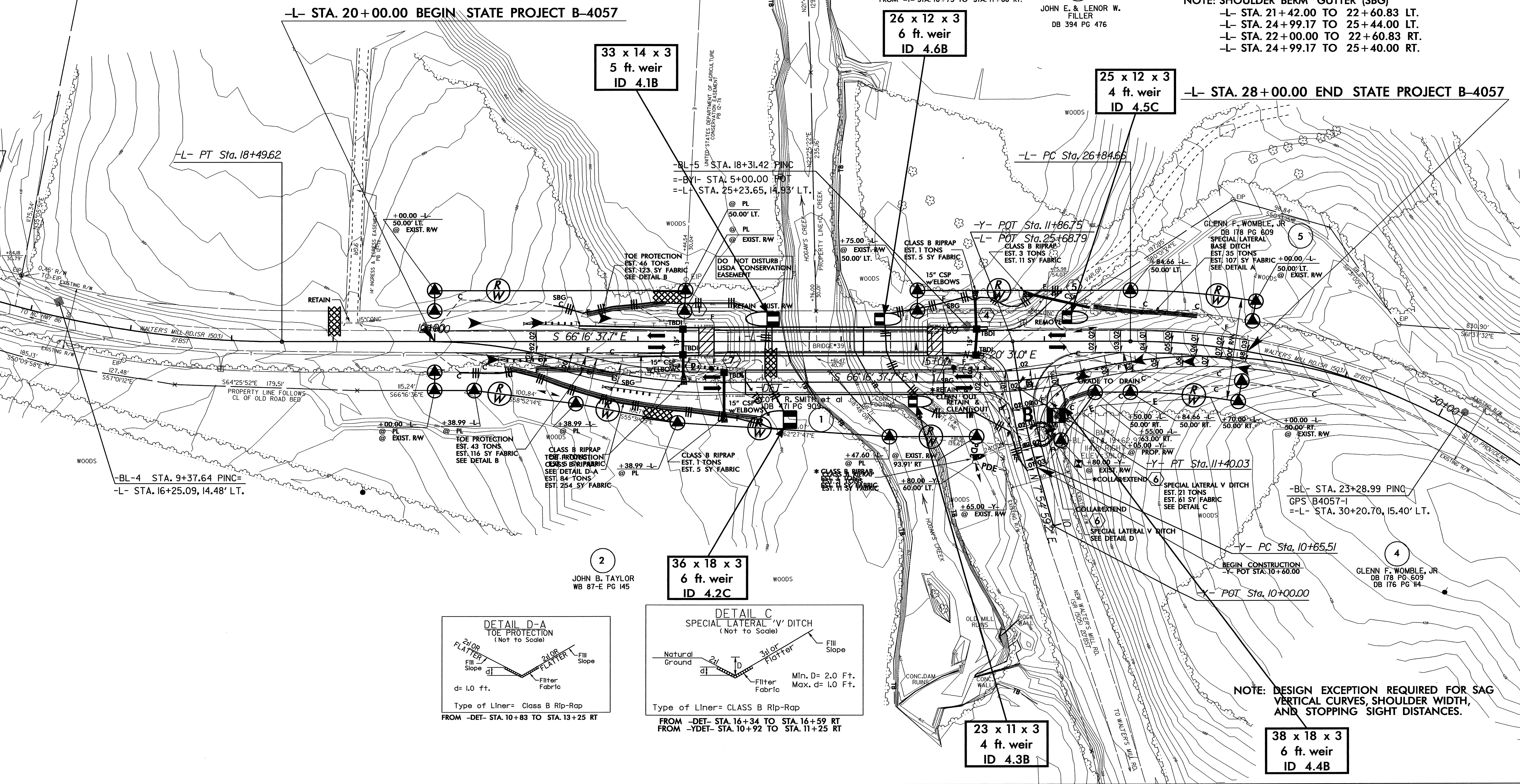
3  
JOHN E. & LENOR W.  
FILLER  
DB 394 PG 476

**NOTE: SHOULDER BERM GUTTER (SBG)**  
-L- STA. 21+42.00 TO 22+60.83 LT.  
-L- STA. 24+99.17 TO 25+44.00 LT.  
-L- STA. 22+00.00 TO 22+60.83 RT.  
-L- STA. 24+99.17 TO 25+40.00 RT.

-L- STA. 28+00.00 END STATE PROJECT B-4057

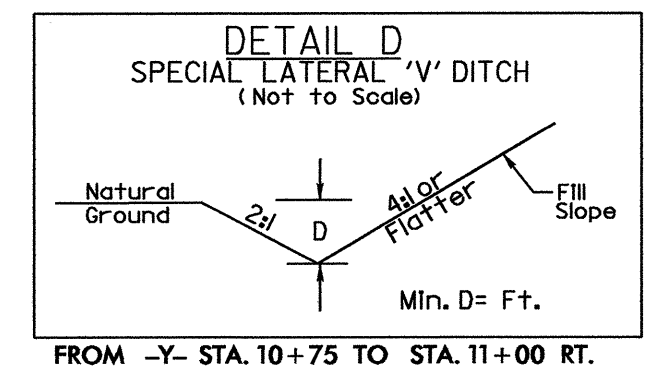
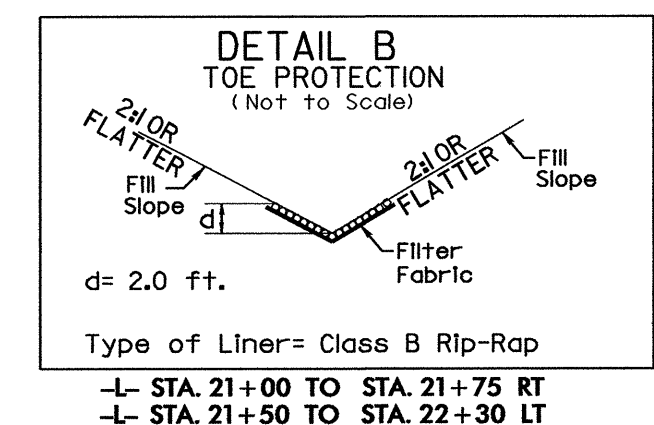
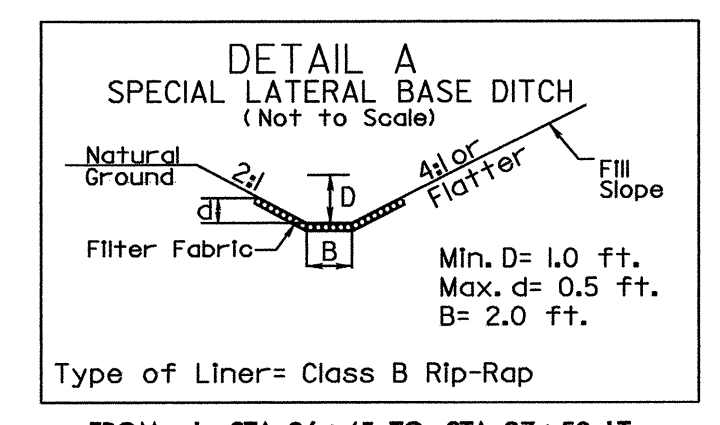
8/17/99  
20-FEB-2008 09:15  
C:\Users\perry\Documents\environmental\design\b4057.ec.shd4.dgn  
REVISION 231812

MARIE D. GILLIAM  
DB 286 PG 401



**NOTE: DESIGN EXCEPTION REQUIRED FOR SAG  
VERTICAL CURVES, SHOULDER WIDTH,  
AND STOPPING SIGHT DISTANCES.**

PROJECT REFERENCE NO.	SHEET NO.
B-4057	EC-5/CONST.4
RW SHEET NO.	
ROADWAY DESIGN ENGINEER	HYDRAULICS ENGINEER

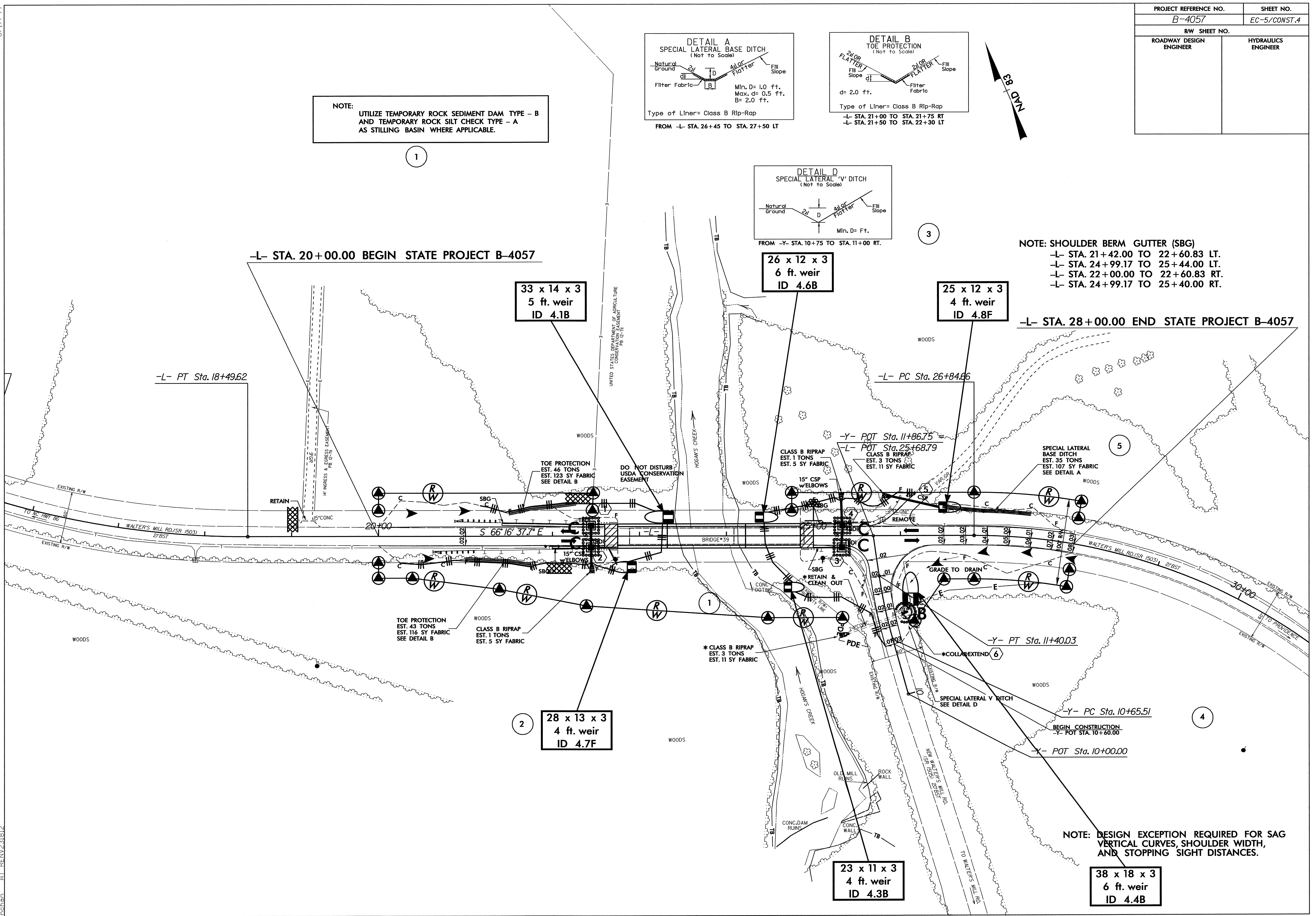


NOTE: UTILIZE TEMPORARY ROCK SEDIMENT DAM TYPE - B AND TEMPORARY ROCK SILT CHECK TYPE - A AS STILLING BASIN WHERE APPLICABLE.

NOTE: SHOULDER BERM GUTTER (SBG)  
 -L- STA. 21+42.00 TO 22+60.83 LT.  
 -L- STA. 24+99.17 TO 25+44.00 LT.  
 -L- STA. 22+00.00 TO 22+60.83 RT.  
 -L- STA. 24+99.17 TO 25+40.00 RT.

-L- STA. 28+00.00 END STATE PROJECT B-4057

8/17/99  
20-FEB-2008 09:49 C:\tt\p\p\p\environmental\design\b4057.ec-sh04.dgn  
A:\REV\231812



28 x 13 x 3  
4 ft. weir  
ID 4.7F

23 x 11 x 3  
4 ft. weir  
ID 4.3B

38 x 18 x 3  
6 ft. weir  
ID 4.4B

NOTE: DESIGN EXCEPTION REQUIRED FOR SAG VERTICAL CURVES, SHOULDER WIDTH, AND STOPPING SIGHT DISTANCES.

8/17/09  
 20-FEB-2008 09:15 b4057-environmental\design\b4057.ec.sh05.dgn  
 JOHN B. TAYLOR WB 87-E PG 145

# DETOUR

PROJECT REFERENCE NO.	SHEET NO.
B-4057	EC-6/CONST.5
RW SHEET NO.	
ROADWAY DESIGN ENGINEER	HYDRAULICS ENGINEER

MARIE D. GILLIAM  
DB 286 PG 401

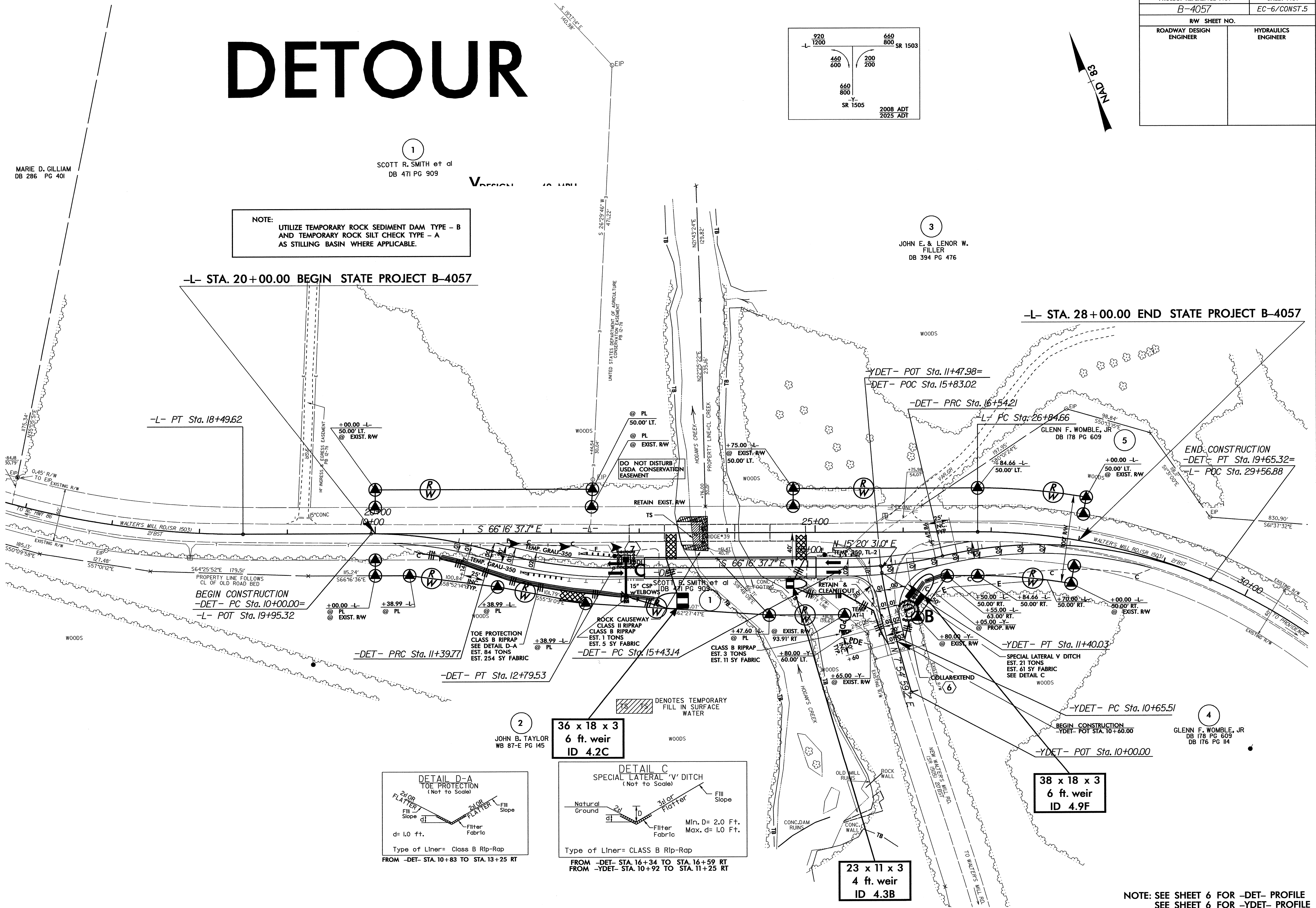
1  
SCOTT R. SMITH et al  
DB 471 PG 909

3  
JOHN E. & LENOR W.  
FILLER  
DB 394 PG 476

NOTE:  
UTILIZE TEMPORARY ROCK SEDIMENT DAM TYPE - B  
AND TEMPORARY ROCK SILT CHECK TYPE - A  
AS STILLING BASIN WHERE APPLICABLE.

-L- STA. 20+00.00 BEGIN STATE PROJECT B-4057

-L- STA. 28+00.00 END STATE PROJECT B-4057



-L- PT Sta. 18+49.62

BEGIN CONSTRUCTION  
-DET- PC Sta. 10+00.00=  
-L- POT Sta. 19+95.32

-DET- PRC Sta. 11+39.77

-DET- PT Sta. 12+79.53

-DET- PC Sta. 15+43.14

-DET- PRC Sta. 16+54.21

L- PC Sta. 26+84.66

END CONSTRUCTION  
-DET- PT Sta. 19+65.32=  
-L- POC Sta. 29+56.88

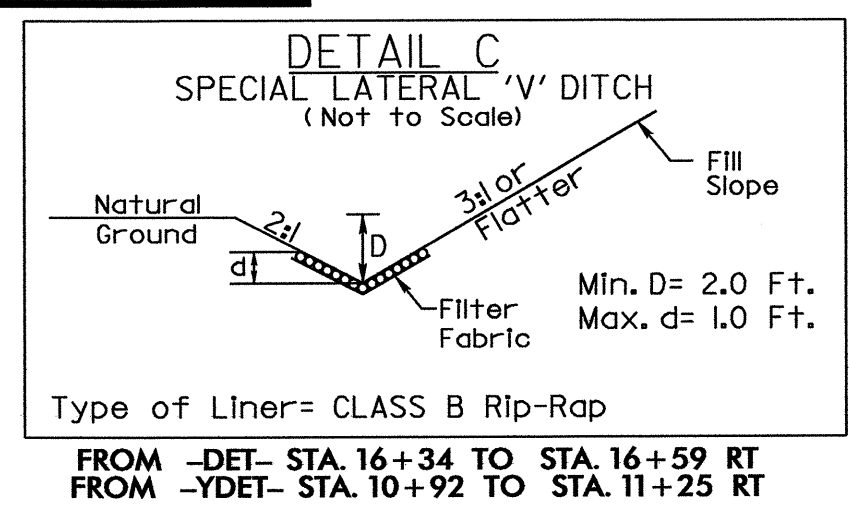
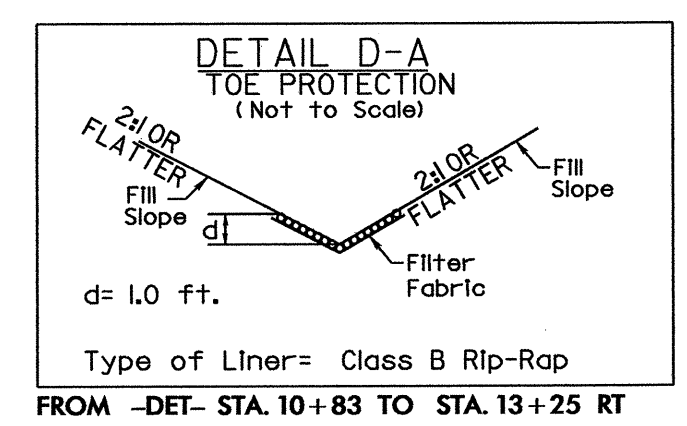
2  
JOHN B. TAYLOR  
WB 87-E PG 145

36 x 18 x 3  
6 ft. weir  
ID 4.2C

4  
GLENN F. WOMBLE, JR  
DB 178 PG 609  
DB 176 PG 14

38 x 18 x 3  
6 ft. weir  
ID 4.9F

23 x 11 x 3  
4 ft. weir  
ID 4.3B



NOTE: SEE SHEET 6 FOR -DET- PROFILE  
SEE SHEET 6 FOR -YDET- PROFILE