

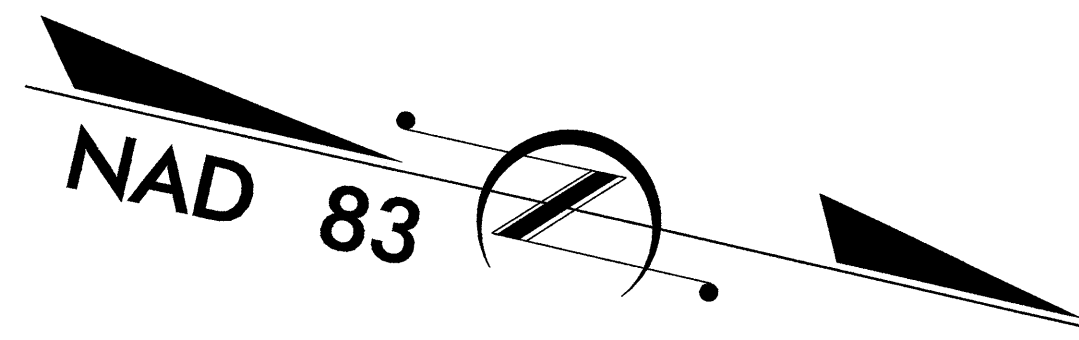
TIP PROJECT: U-2702

STATE OF NORTH CAROLINA
 DIVISION OF HIGHWAYS
 PLAN FOR PROPOSED
 HIGHWAY EROSION CONTROL

RANDOLPH/GUILFORD COUNTIES

**LOCATION: ARCHDALE-HIGH POINT INTERSECTION OF SR
 1592 (EDEN TERRACE) AND SR 1595 (SURRETT DR.)**

**TYPE OF WORK: GRADING, PAVING, WIDENING, DRAINAGE, SIGNALS
 AND RETAINING WALL**



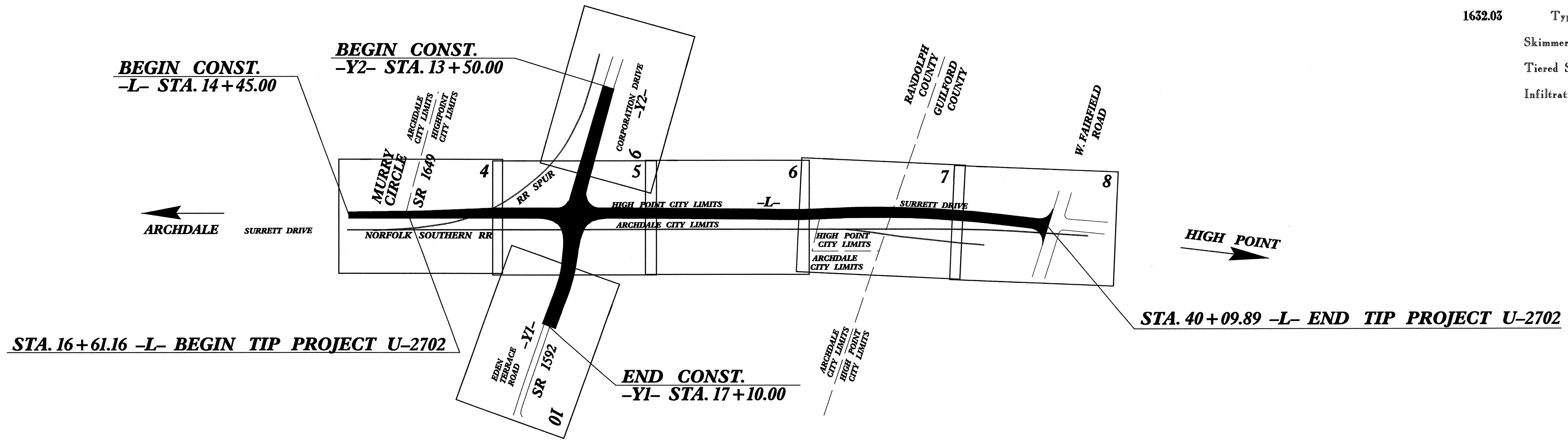
STATE	STATE PROJECT REFERENCE NO.	SHEET NO.	TOTAL SHEETS
N.C.	U-2702	EC-1	
STATE PROJ. NO.	F.A. PROJ. NO.	DESCRIPTION	

EROSION AND SEDIMENT CONTROL MEASURES

Std. #	Description	Symbol
1630.03	Temporary Silt Ditch	TSD
1630.05	Temporary Diversion	TD
1605.01	Temporary Silt Fence	III III III
1606.01	Special Sediment Control Fence	△△△△△△△△
1622.01	Temporary Berms and Slope Drains	—
1630.01	Riser Basin	⊙
1630.02	Silt Basin Type B	▨
1633.01	Temporary Rock Silt Check Type-A	▩
	Temporary Rock Silt Check Type-B	▶
	Wattle	⌒
1634.01	Temporary Rock Sediment Dam Type-A	▩
1634.02	Temporary Rock Sediment Dam Type-B	▩
1635.01	Rock Pipe Inlet Sediment Trap Type-A	⊕
1635.02	Rock Pipe Inlet Sediment Trap Type-B	⊕
1630.04	Stilling Basin	▭
	Rock Inlet Sediment Trap:	
1632.01	Type A	A
1632.02	Type B	B
1632.03	Type C	C
	Skimmer Basin	▭
	Tiered Skimmer Basin	▭
	Infiltration Basin	▭

**THIS PROJECT CONTAINS
 EROSION CONTROL PLANS
 FOR CLEARING AND
 GRUBBING PHASE OF
 CONSTRUCTION.**

**THIS PROJECT HAS
 BEEN DESIGNED TO
 SENSITIVE WATERSHED
 STANDARDS.**



GRAPHIC SCALE

0

 PLANS

0

 PROFILE (HORIZONTAL)

0

 PROFILE (VERTICAL)

ROADSIDE ENVIRONMENTAL UNIT
 DIVISION OF HIGHWAYS
 STATE OF NORTH CAROLINA

Prepared In the Office of:
ROADSIDE ENVIRONMENTAL UNIT
 1 South Wilmington St.
 Raleigh, NC 27611
2006 STANDARD SPECIFICATIONS

Roadway Standard Drawings

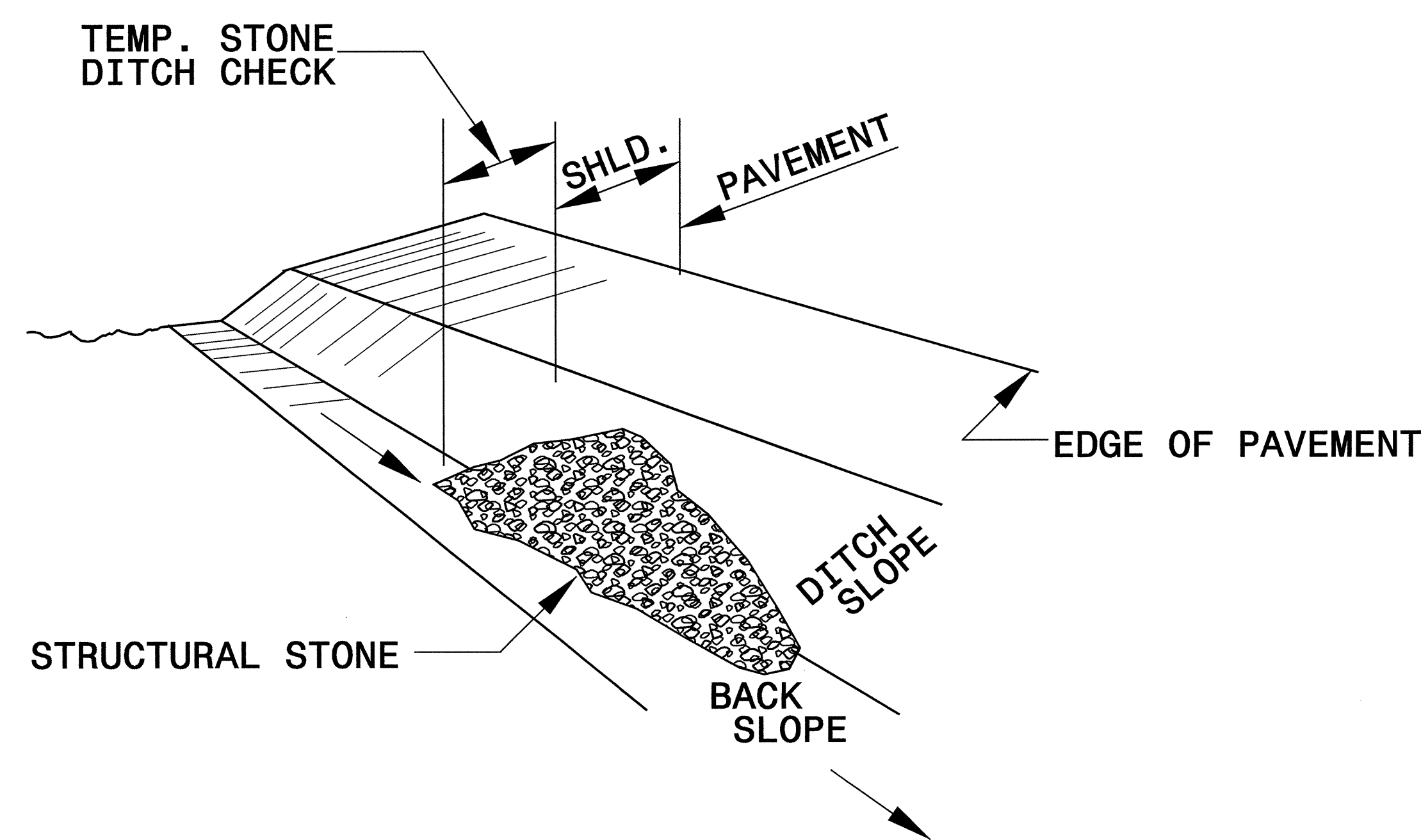
The following roadway english standards as appear in "Roadway Standard Drawings"- Roadway Design Unit - N. C. Department of Transportation - Raleigh, N. C., dated July 18, 2006 and the latest revision thereto are applicable to this project and by reference hereby are considered a part of these plans.

1605.01 Temporary Silt Fence	1632.02 Rock Inlet Sediment Trap Type B
1606.01 Special Sediment Control Fence	1632.03 Rock Inlet Sediment Trap Type C
1607.01 Gravel Construction Entrance	1633.01 Temporary Rock Silt Check Type A
1630.05 Temporary Diversion	1634.02 Temporary Rock Sediment Dam Type B
	1635.02 Rock Pipe Inlet Sediment Trap Type B

25-July-2008 14:30 pps\ecsb\ur\ur\design\ur2702.ec.tsh.dgn

PROJECT REFERENCE NO. U-2702	SHEET NO. EC-2
RW SHEET NO.	
ROADWAY DESIGN ENGINEER	HYDRAULICS ENGINEER

TEMPORARY ROCK SILT CHECK TYPE 'B' DETAIL

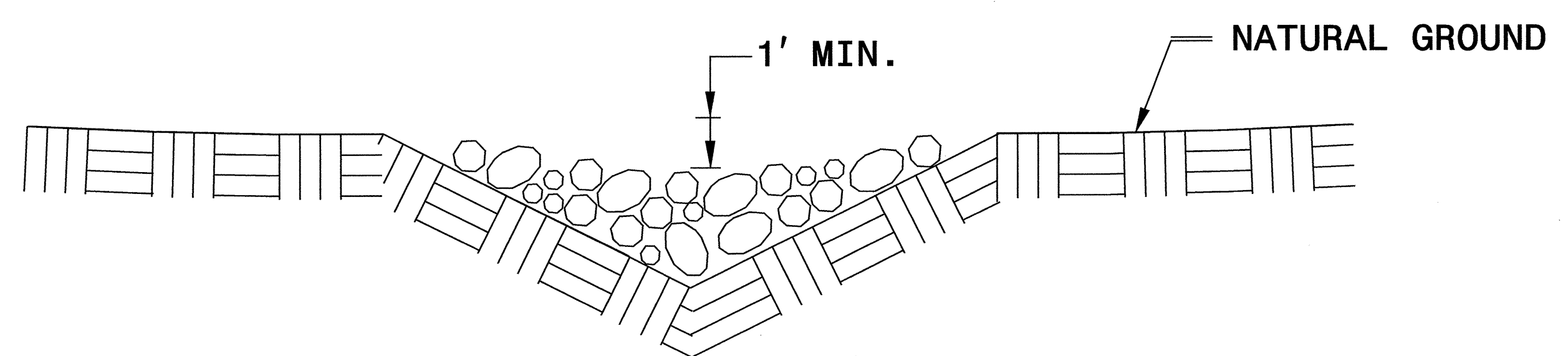


ISOMETRIC VIEW

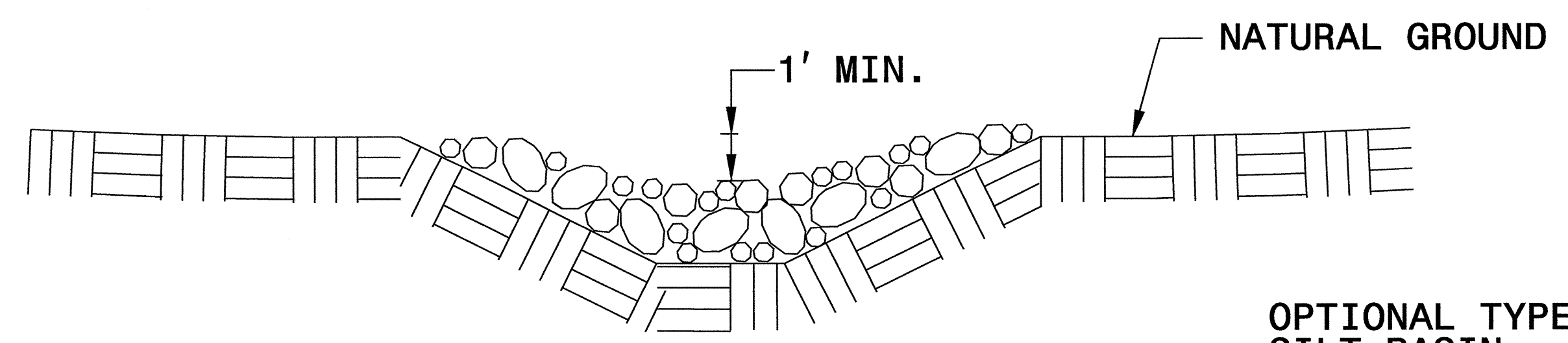
NOTES:

USE CLASS 'B' EROSION CONTROL STONE FOR STRUCTURAL STONE.

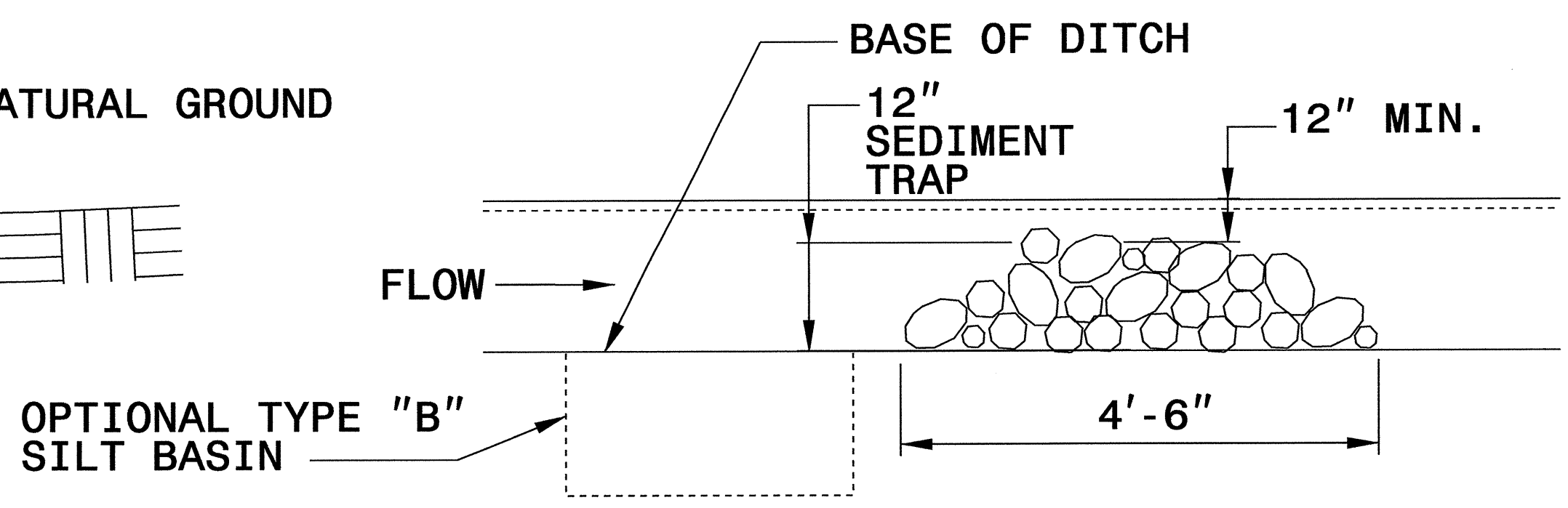
THE ENGINEER MAY DIRECT THE OPTION OF CLASS "A" STONE FOR SITES HAVING LESS THAN ONE (1) ACRE DRAINAGE AREA AND A DITCH GRADE LESS THAN 3%.



CROSS SECTION VEE DITCH



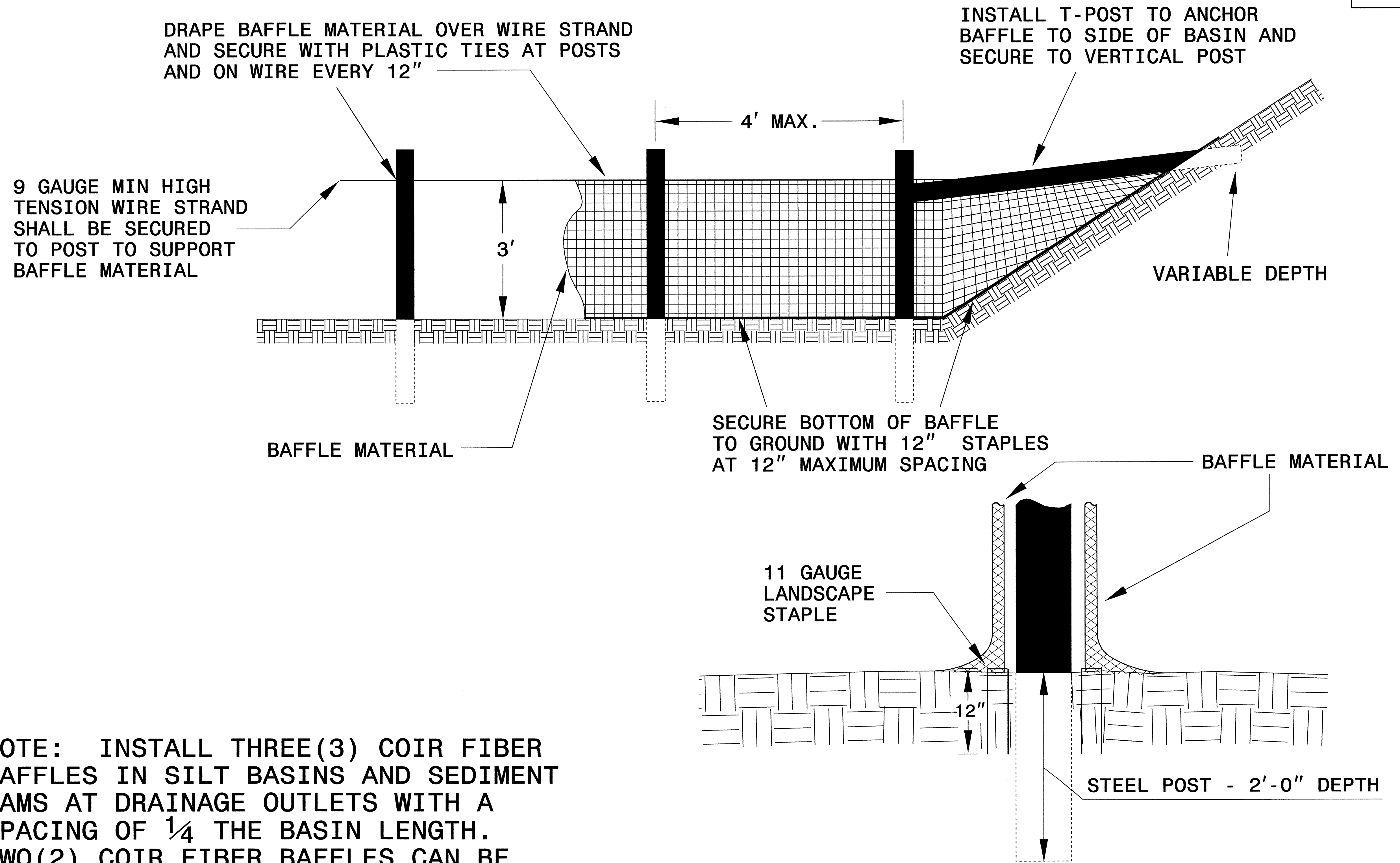
CROSS SECTION TRAPEZOIDAL DITCH



ELEVATION VIEW

PROJECT REFERENCE NO. U-2702	SHEET NO. EC-2A
RW SHEET NO.	
ROADWAY DESIGN ENGINEER	HYDRAULICS ENGINEER

COIR FIBER BAFFLE DETAIL



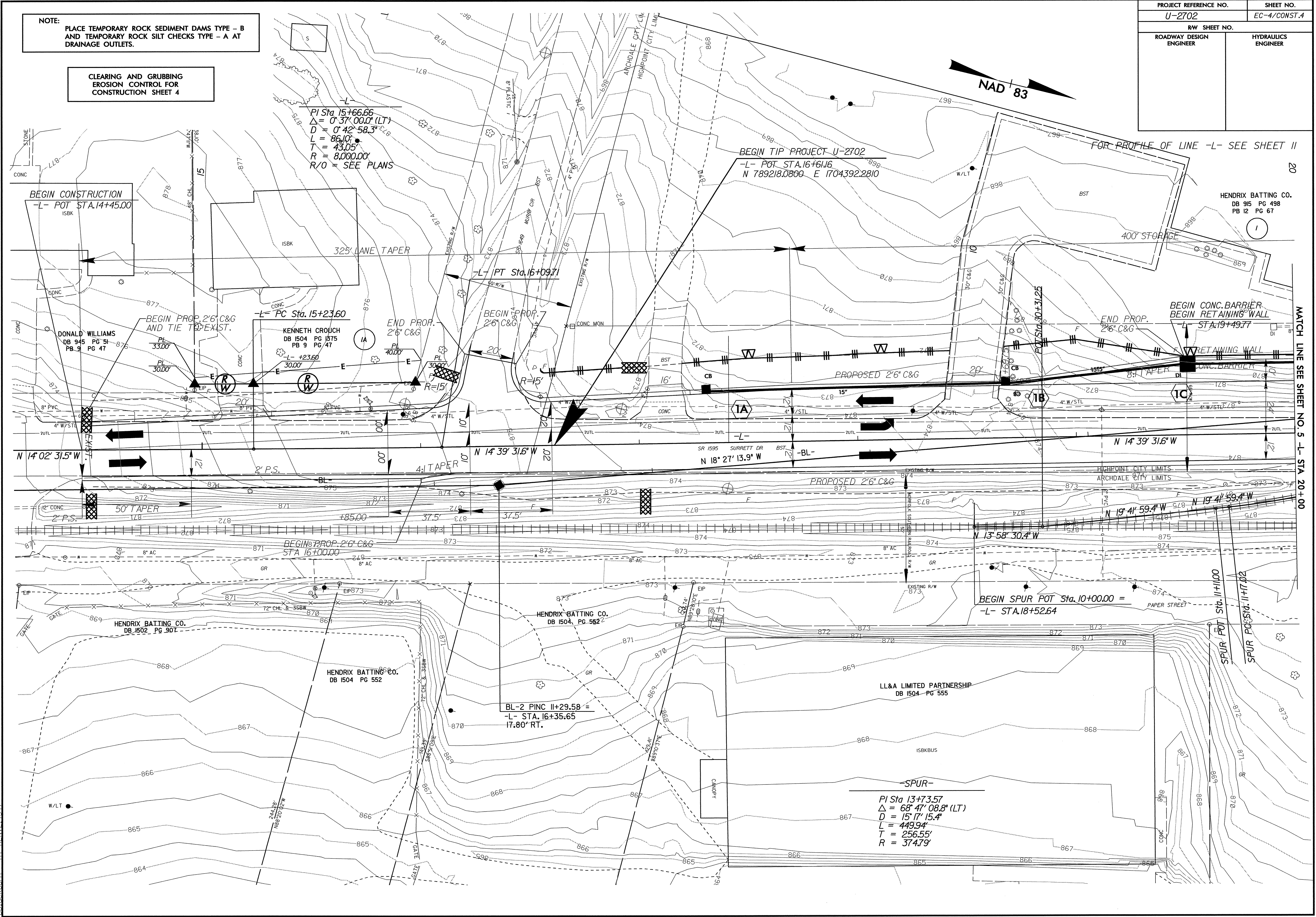
NOTE: INSTALL THREE(3) COIR FIBER BAFFLES IN SILT BASINS AND SEDIMENT DAMS AT DRAINAGE OUTLETS WITH A SPACING OF $\frac{1}{4}$ THE BASIN LENGTH. TWO(2) COIR FIBER BAFFLES CAN BE INSTALLED IN SILT BASINS AND DAMS LESS THAN 20 FT. IN LENGTH WITH A SPACING OF $\frac{1}{3}$ THE BASIN LENGTH.

BAFFLE MATERIAL SHALL BE SECURED TO THE BOTTOM AND SIDES OF BASIN USING 12" LANDSCAPE STAPLES

PROJECT REFERENCE NO.	SHEET NO.
U-2702	EC-4/CONST.4
R/W SHEET NO.	HYDRAULICS ENGINEER
ROADWAY DESIGN ENGINEER	

NOTE:
PLACE TEMPORARY ROCK SEDIMENT DAMS TYPE - B
AND TEMPORARY ROCK SILT CHECKS TYPE - A AT
DRAINAGE OUTLETS.

CLEARING AND GRUBBING
EROSION CONTROL FOR
CONSTRUCTION SHEET 4



28-JAN-2008 14:33
G:\tpp\projects\U-2702\env\fromental\design\U2702-ec.psh.s4.dgn
B:\backburn AT RENVP14547

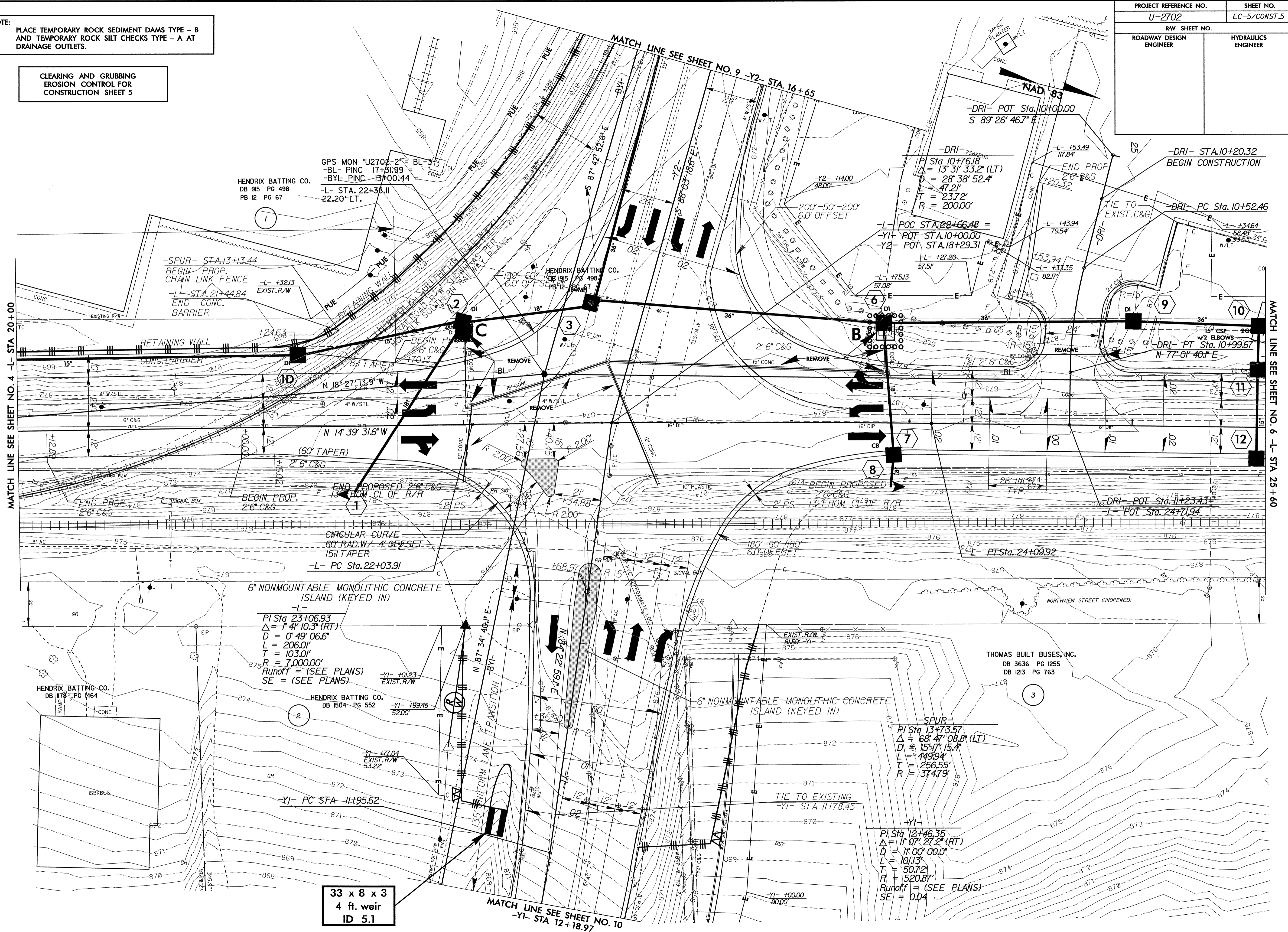
MATCH LINE SEE SHEET NO. 5 -L- STA. 20+00

HENDRIX BATTING CO.
DB 915 PG 498
PB 12 PG 67

PROJECT REFERENCE NO.	SHEET NO.
U-2702	EC-5/CONST.5
RW SHEET NO.	
ROADWAY DESIGN ENGINEER	HYDRAULICS ENGINEER

NOTE: PLACE TEMPORARY ROCK SEDIMENT DAMS TYPE - B AND TEMPORARY ROCK SILT CHECKS TYPE - A AT DRAINAGE OUTLETS.

CLEARING AND GRUBBING EROSION CONTROL FOR CONSTRUCTION SHEET 5



MATCH LINE SEE SHEET NO. 4 -L- STA 20+00

MATCH LINE SEE SHEET NO. 6 -L- STA 25+00

33 x 8 x 3
4 ft. weir
ID 5.1

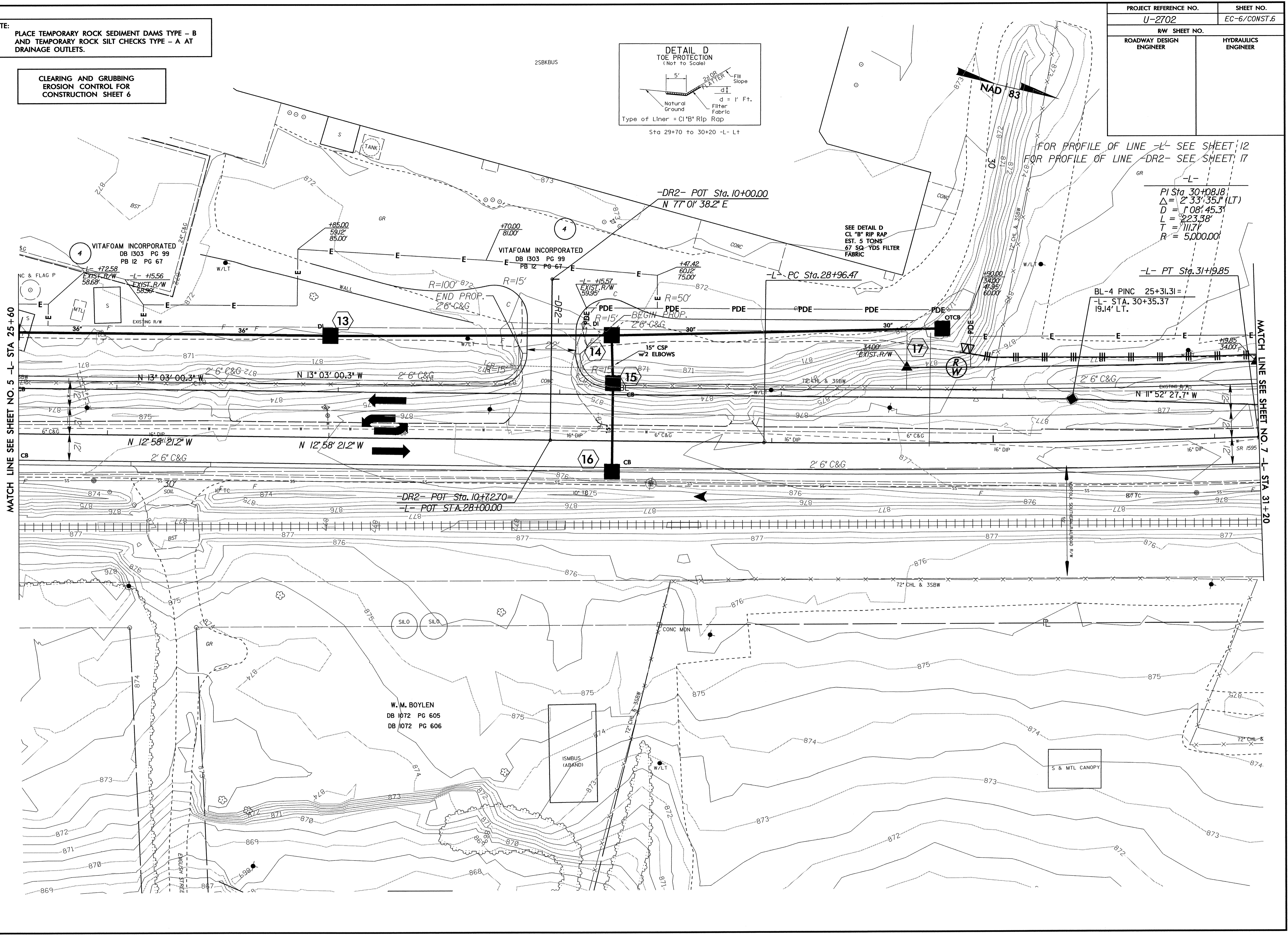
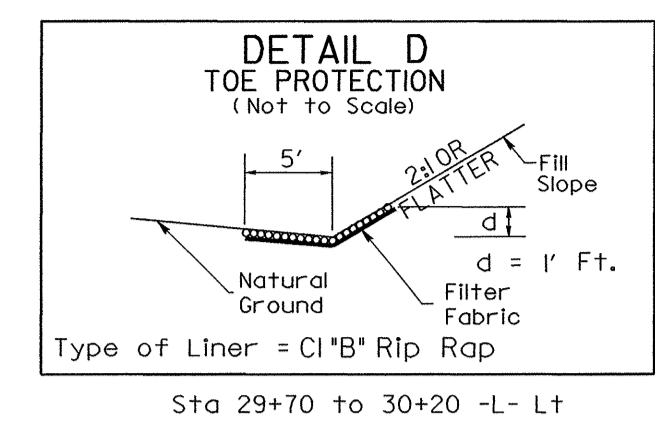
MATCH LINE SEE SHEET NO. 10
-Y1- STA 12+18.97

28-JAN-2008 14:36
g:\tipp\c\ec\ts\U-2702\enviromental\design\U2702.ec_pah_s5.dgn
bb\ackb\ec-5

PROJECT REFERENCE NO.	SHEET NO.
U-2702	EC-6/CONST.6
R/W SHEET NO.	
ROADWAY DESIGN ENGINEER	HYDRAULICS ENGINEER

NOTE:
PLACE TEMPORARY ROCK SEDIMENT DAMS TYPE - B
AND TEMPORARY ROCK SILT CHECKS TYPE - A AT
DRAINAGE OUTLETS.

CLEARING AND GRUBBING
EROSION CONTROL FOR
CONSTRUCTION SHEET 6



FOR PROFILE OF LINE -L- SEE SHEET 12
FOR PROFILE OF LINE -DR2- SEE SHEET 17

-L-
PI Sta. 30+08.18
 $\Delta = 2' 33' 35''$ (LT)
D = 1' 08' 45.3"
L = 223.58'
T = 111.7'
R' = 5,000.00'

BL-4 PINC 25+31.31 =
-L- STA. 30+35.37
19.14' LT.

MATCH LINE SEE SHEET NO. 5 -L- STA 25+60

MATCH LINE SEE SHEET NO. 7 -L- STA 31+20

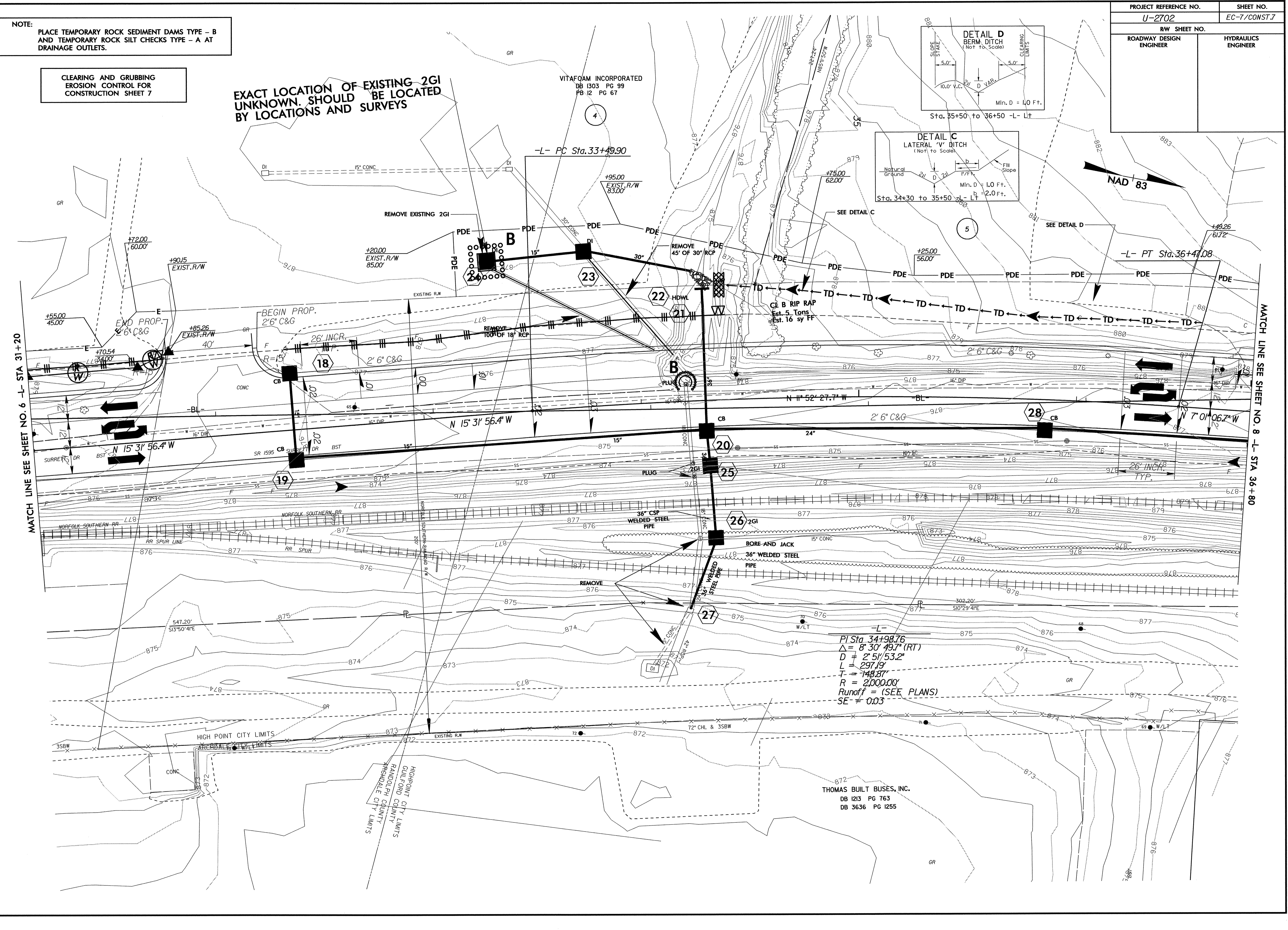
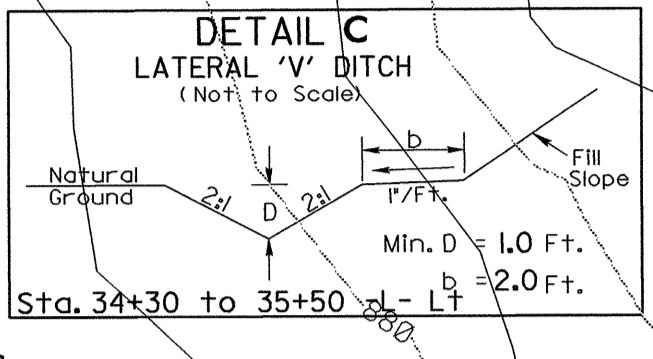
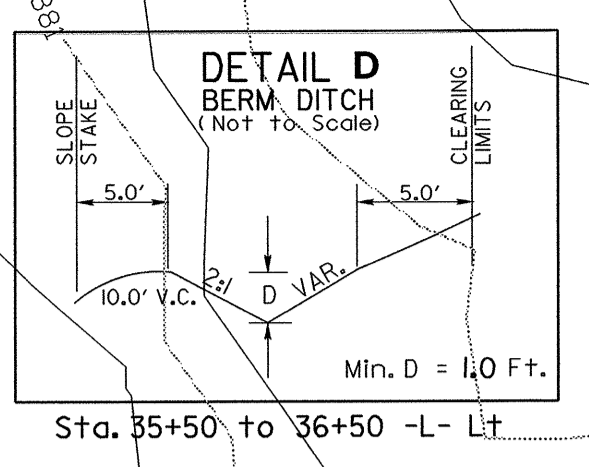
28-JAN-2008 14:45
g:\tipp\projects\U-2702\environmental\design\U2702.ec_psh_s6.dgn
Blackburn - 01-FEN-14547

PROJECT REFERENCE NO.	SHEET NO.
U-2702	EC-7/CONST.7
R/W SHEET NO.	
ROADWAY DESIGN ENGINEER	HYDRAULICS ENGINEER

NOTE:
PLACE TEMPORARY ROCK SEDIMENT DAMS TYPE - B
AND TEMPORARY ROCK SILT CHECKS TYPE - A AT
DRAINAGE OUTLETS.

CLEARING AND GRUBBING
EROSION CONTROL FOR
CONSTRUCTION SHEET 7

EXACT LOCATION OF EXISTING 2GI
UNKNOWN. SHOULD BE LOCATED
BY LOCATIONS AND SURVEYS



PI Sta 34+98.76
Δ = 8° 30' 49.7" (RT)
D = 2° 51' 53.2"
L = 297.19'
T = 148.87'
R = 2,000.00'
Runoff = (SEE PLANS)
SE = 0.03

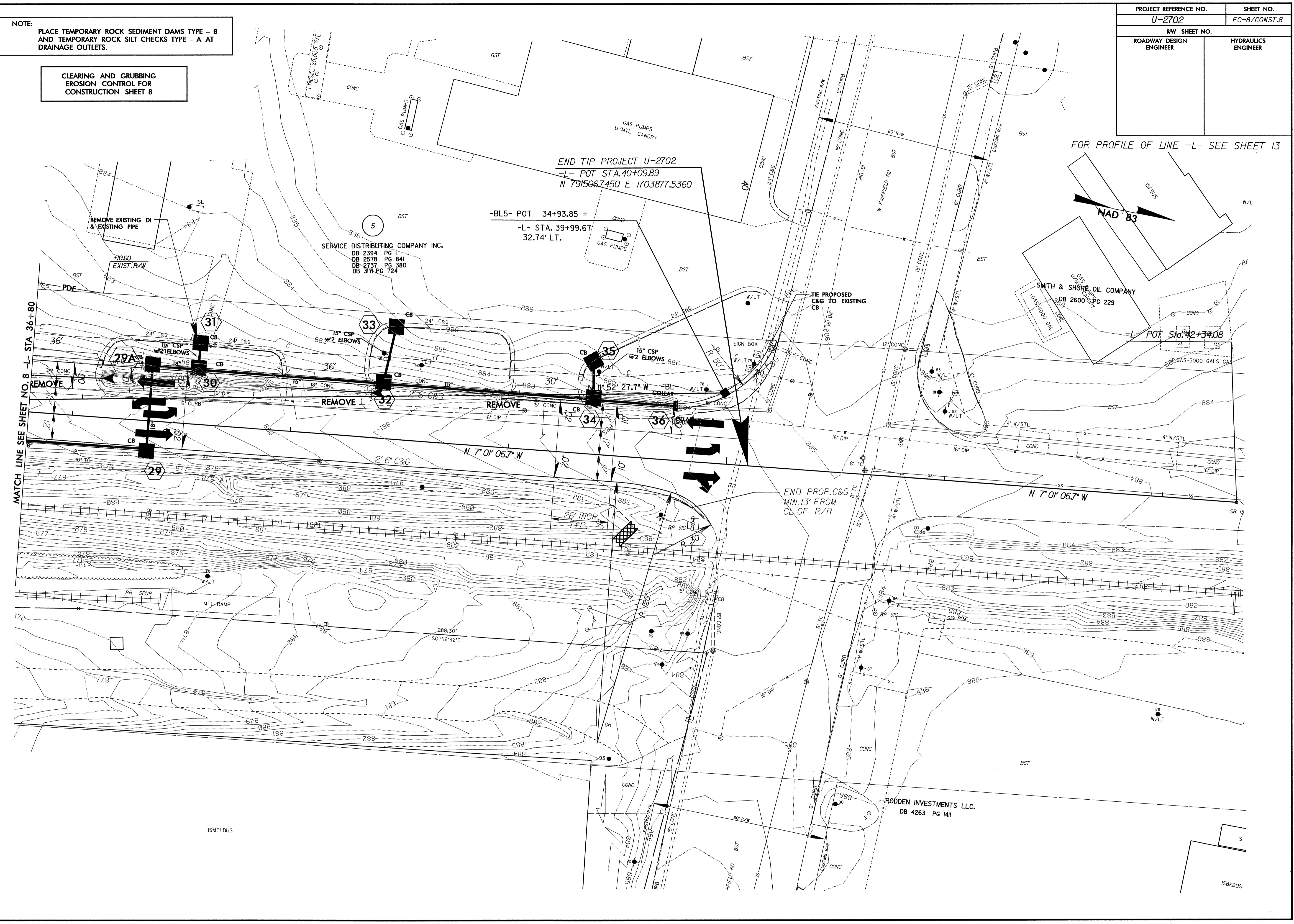
THOMAS BUILT BUSES, INC.
DB 1213 PG 763
DB 3636 PG 1255

28-JAN-2008 14:47
S:\projects\2702\enviromental\design\2702.ec.psh.s7.dgn
BLACKBURN AT 11/21/07

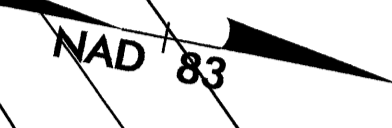
PROJECT REFERENCE NO.	SHEET NO.
U-2702	EC-8/CONST.8
RW SHEET NO.	
ROADWAY DESIGN ENGINEER	HYDRAULICS ENGINEER

NOTE:
PLACE TEMPORARY ROCK SEDIMENT DAMS TYPE - B
AND TEMPORARY ROCK SILT CHECKS TYPE - A AT
DRAINAGE OUTLETS.

CLEARING AND GRUBBING
EROSION CONTROL FOR
CONSTRUCTION SHEET 8



FOR PROFILE OF LINE -L- SEE SHEET 13



MATCH LINE SEE SHEET NO. 8 -L- STA. 36+80

28-JAN-2008 14:49
g:\tippro\projects-u-2702\environmental\design\u2702-ec-psh-s8.dgn
blackburn A:HENV214547

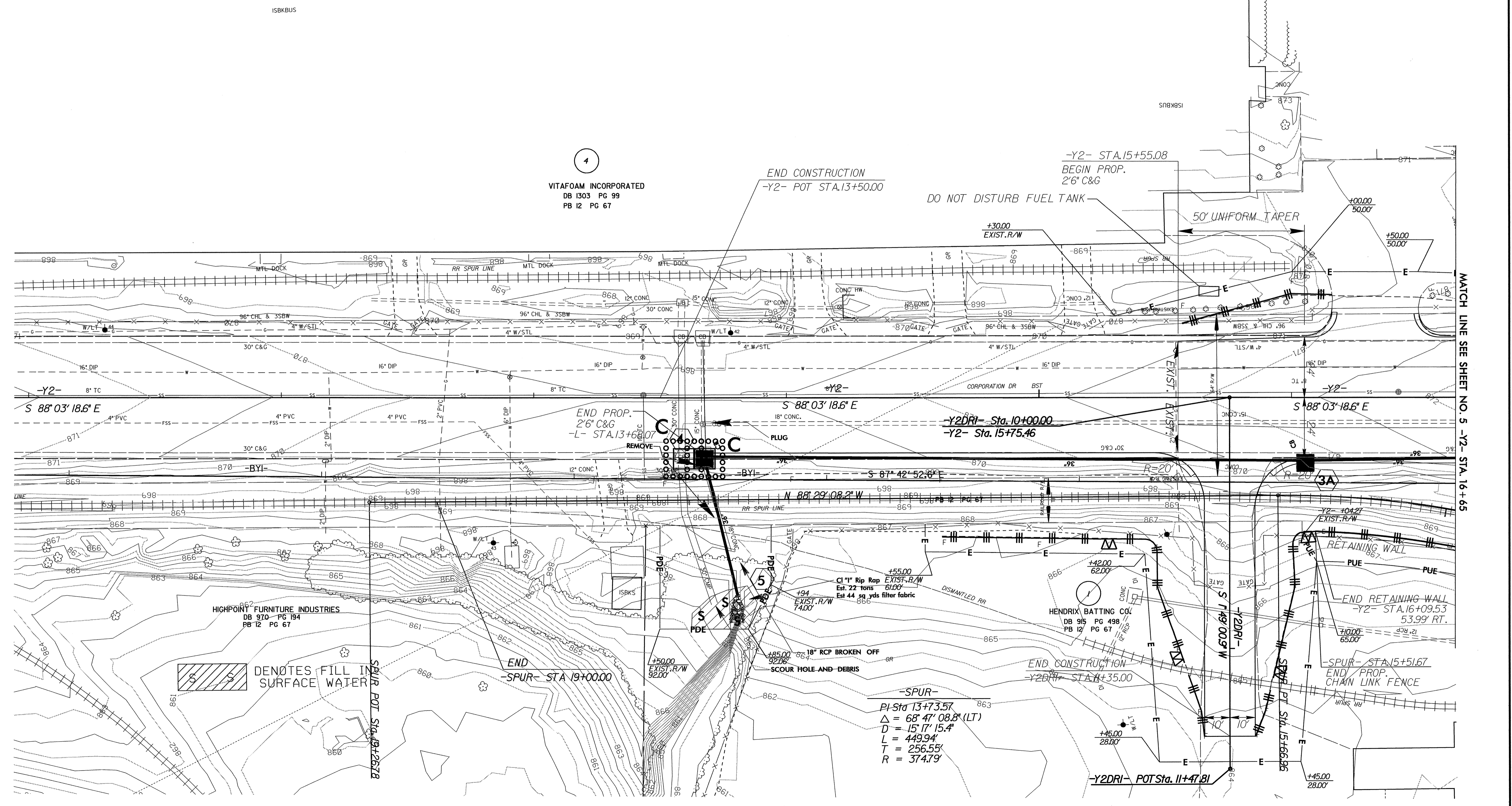
PROJECT REFERENCE NO. U-2702	SHEET NO. EC-9/CONST.9
RAW SHEET NO.	
ROADWAY DESIGN ENGINEER	HYDRAULICS ENGINEER

NOTE: PLACE TEMPORARY ROCK SEDIMENT DAMS TYPE - B AND TEMPORARY ROCK SILT CHECKS TYPE - A AT DRAINAGE OUTLETS.

CLEARING AND GRUBBING EROSION CONTROL FOR CONSTRUCTION SHEET 9



FOR PROFILE OF LINE -Y2- SEE SHEET 15
FOR PROFILE OF LINE -Y2DRI- SEE SHEET 17



4
VITAFORM INCORPORATED
DB 1303 PG 99
PB 12 PG 67

HIGHPOINT FURNITURE INDUSTRIES
DB 970 PG 194
PB 12 PG 67

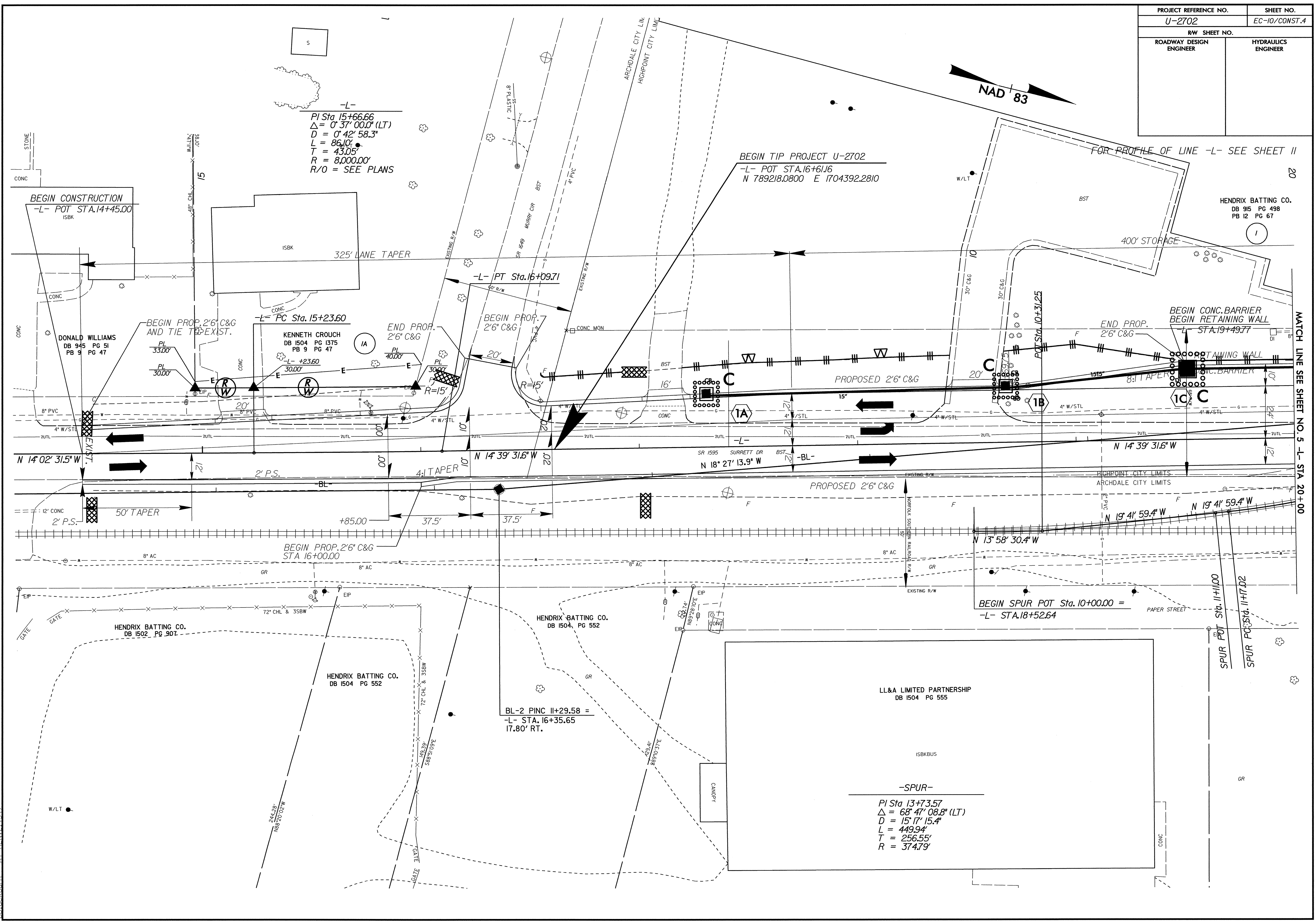
SPUR POT STA. 9+27.8
DENOTES FILL IN SURFACE WATER

-SPUR-
PI-STA 13+73.57
Δ = 68° 47' 08.8" (LT)
D = 15' 17" 15.4"
L = 449.94'
T = 256.55'
R = 374.79'

MATCH LINE SEE SHEET NO. 5 -Y2- STA. 16+65

28-JAN-2008 14:52
g:\tipp\projects\2702\environmental\design\2702-ec-psh-s9.dgn
blackburn_01.FRN\2702

PROJECT REFERENCE NO.		SHEET NO.	
U-2702		EC-10/CONST.4	
RW SHEET NO.			
ROADWAY DESIGN ENGINEER		HYDRAULICS ENGINEER	



-L-
 PI Sta. 15+66.66
 $\Delta = 0^\circ 37' 00.0''$ (LT)
 $D = 0^\circ 42' 58.3''$
 $L = 86.10'$
 $T = 43.05'$
 $R = 8,000.00'$
 R/O = SEE PLANS

BEGIN TIP PROJECT U-2702
 -L- POT STA. 16+61.16
 N 789218.0800 E 1704392.2810

HENDRIX BATTING CO.
 DB 915 PG 498
 PB 12 PG 67

BEGIN CONSTRUCTION
 -L- POT STA. 14+45.00
 ISBK

DONALD WILLIAMS
 DB 945 PG 51
 PB 9 PG 47

KENNETH CROUCH
 DB 1504 PG 1375
 PB 9 PG 47

HENDRIX BATTING CO.
 DB 1504 PG 552

LL&A LIMITED PARTNERSHIP
 DB 1504 PG 555

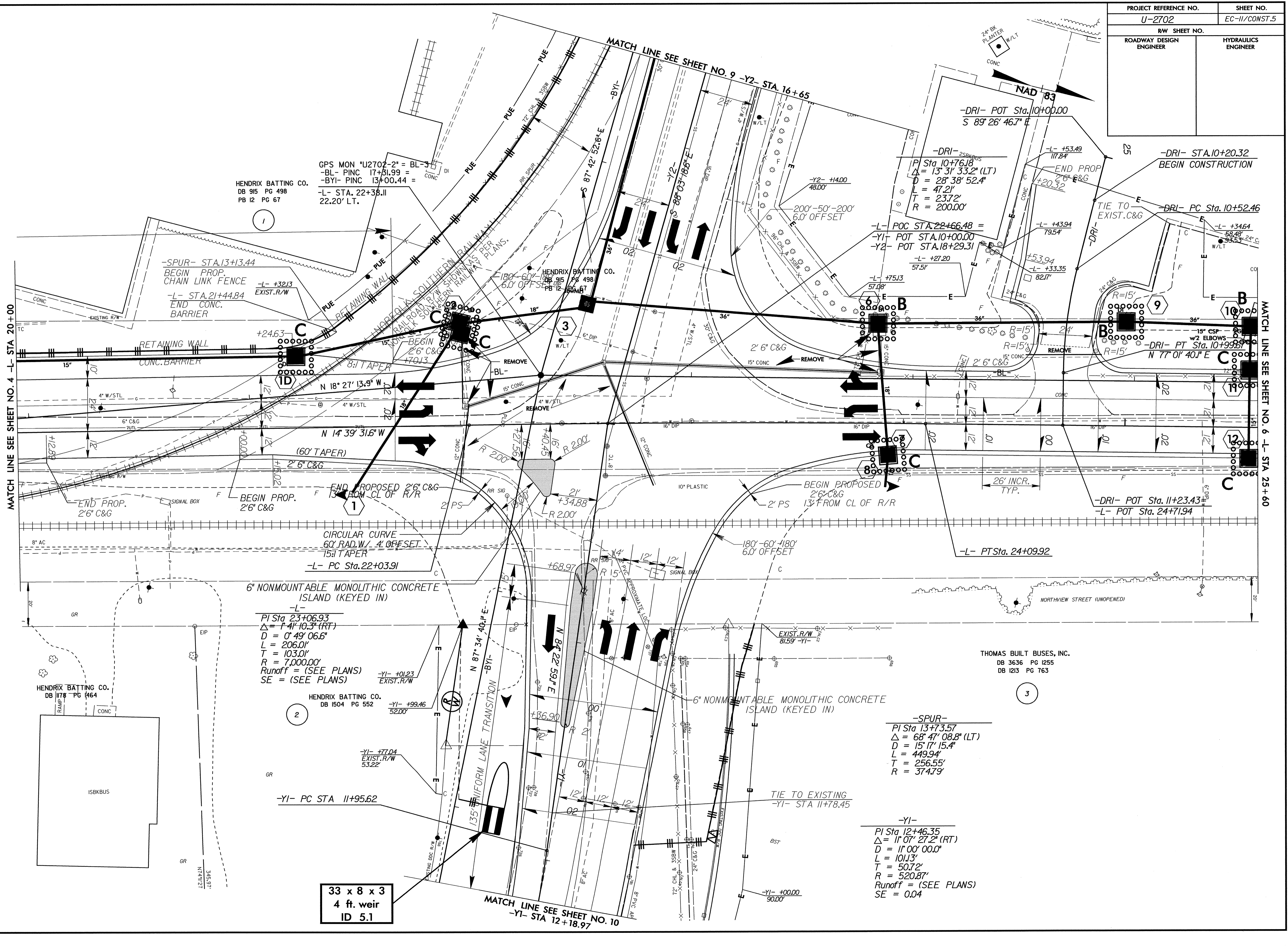
BL-2 P INC II+29.58 =
 -L- STA. 16+35.65
 17.80' RT.

-SPUR-
 PI Sta. 13+73.57
 $\Delta = 68^\circ 47' 08.8''$ (LT)
 $D = 15^\circ 17' 15.4''$
 $L = 449.94'$
 $T = 256.55'$
 $R = 374.79'$

28-JAN-2008 14:32
 G:\tip\projects\U-2702\environmental\design\U2702-ec.psh.s4.dgn
 E:\blackburn AT REN\24547

MATCH LINE SEE SHEET NO. 5 -L- STA. 20+00

PROJECT REFERENCE NO.	SHEET NO.
U-2702	EC-11/CONST.5
R/W SHEET NO.	
ROADWAY DESIGN ENGINEER	HYDRAULICS ENGINEER



HENDRIX BATTING CO.
DB 915 PG 498
PB 12 PG 67

GPS MON 'U2702-2' = BL-3
-BL- PINC 17+51.99 =
-BYI- PINC 13+00.44 =
-L- STA. 22+35.11
22.20' LT.

-SPUR- STA.13+13.44
BEGIN PROP.
CHAIN LINK FENCE
END CONC.
BARRIER

-L- STA.21+44.84
END CONC.
BARRIER

6" NONMOUNTABLE MONOLITHIC CONCRETE
ISLAND (KEYED IN)

-L-
PI Sta 23+06.93
 $\Delta = 1^\circ 41' 10.3" (RT)$
 $D = 0^\circ 49' 06.6"$
 $L = 206.01'$
 $T = 103.01'$
 $R = 7,000.00'$
Runoff = (SEE PLANS)
SE = (SEE PLANS)

HENDRIX BATTING CO.
DB 1504 PG 552

-YI- +99.46
52.00'

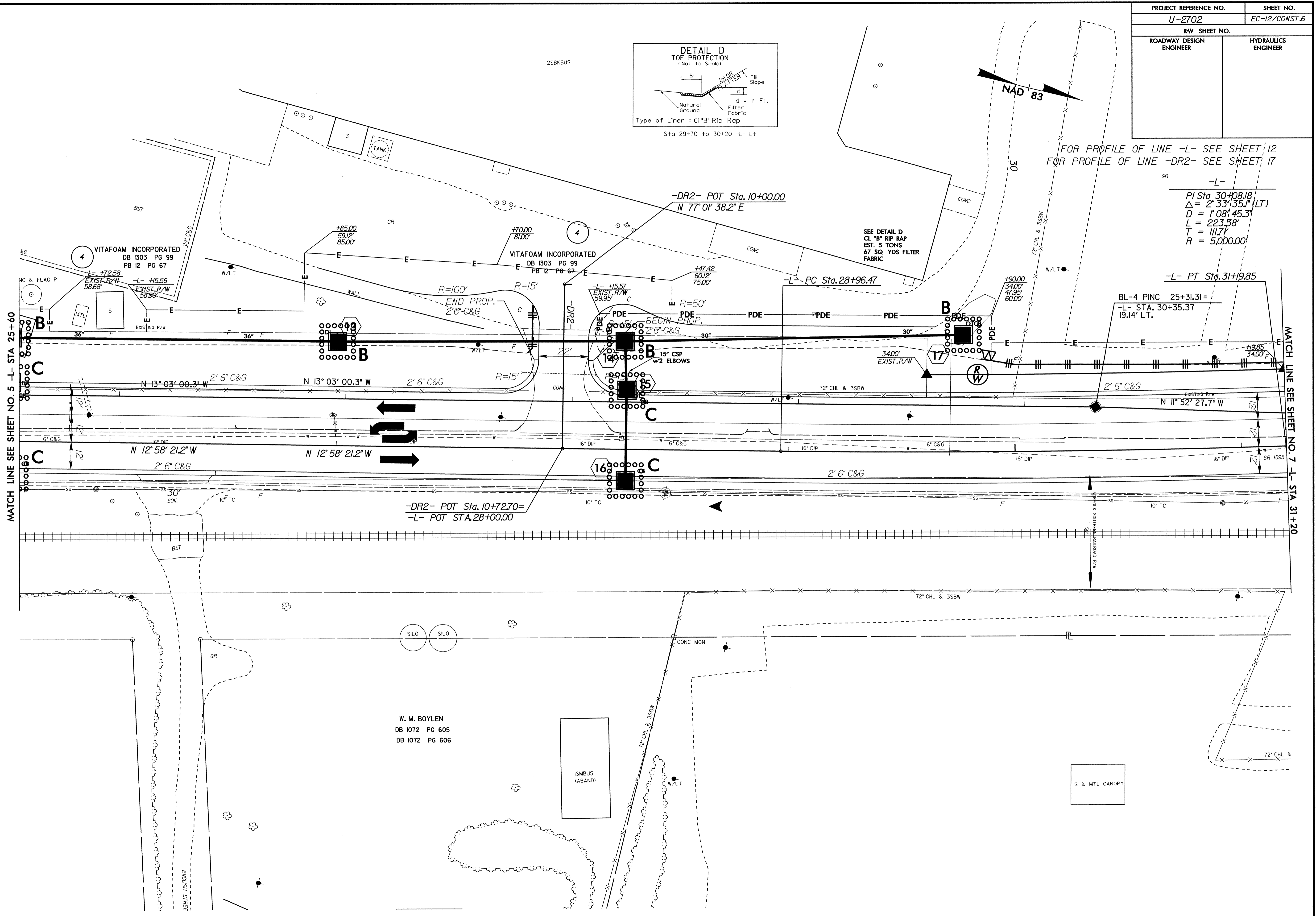
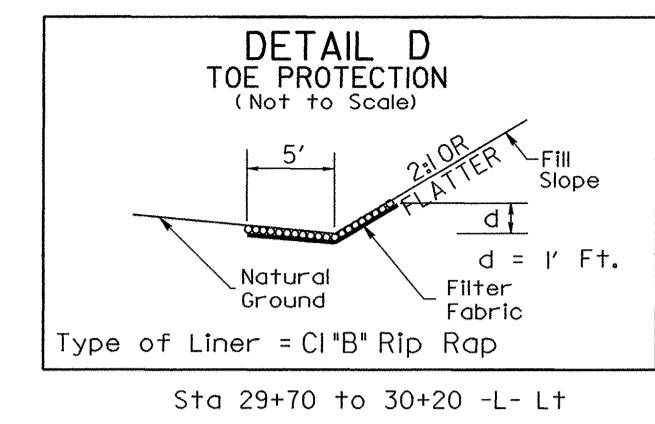
33 x 8 x 3
4 ft. weir
ID 5.1

-SPUR-
PI Sta 13+73.57
 $\Delta = 68^\circ 47' 08.8" (LT)$
 $D = 15^\circ 17' 15.4"$
 $L = 449.94'$
 $T = 256.55'$
 $R = 374.79'$

-YI-
PI Sta 12+46.35
 $\Delta = 11^\circ 07' 27.2" (RT)$
 $D = 11^\circ 00' 00.0"$
 $L = 101.3'$
 $T = 50.72'$
 $R = 520.87'$
Runoff = (SEE PLANS)
SE = 0.04

28-JAN-2008 14:35
g:\tipp\projects\U-2702\epv\environmental\design\U2702-ec-ps1-s5.dgn
blackburn A1 RENW214547

PROJECT REFERENCE NO.	SHEET NO.
U-2702	EC-12/CONST.6
R/W SHEET NO.	
ROADWAY DESIGN ENGINEER	HYDRAULICS ENGINEER



FOR PROFILE OF LINE -L- SEE SHEET 12
 FOR PROFILE OF LINE -DR2- SEE SHEET 17

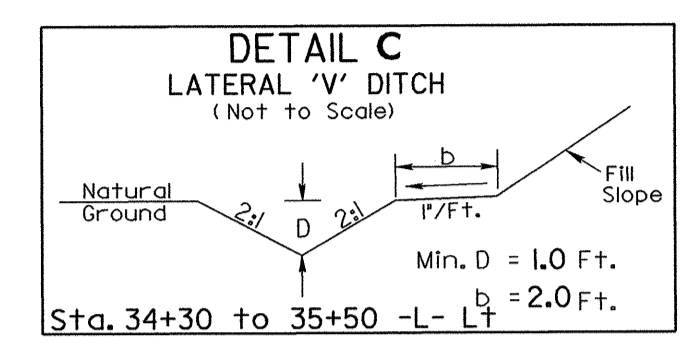
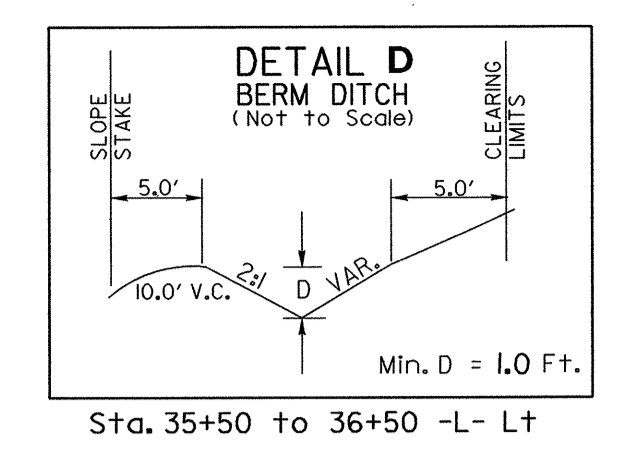
GR -L-
 PI Sta. 30+08.18
 $\Delta = 2' 33' 35''$ (LT)
 $D = 1' 08' 45.3''$
 $L = 223.58'$
 $T = 111.7'$
 $R = 5,000.00'$

-L- PT Sta. 31+9.85
 BL-4 PINC 25+31.31 =
 -L- STA. 30+35.37
 19.14' LT.

W. M. BOYLEN
 DB 1072 PG 605
 DB 1072 PG 606

28-JAN-2008 14:44
 G:\projects-u\2702\environmental\design\2702_ec_psh_s6.dgn
 B:\lockburn AT BENV24547

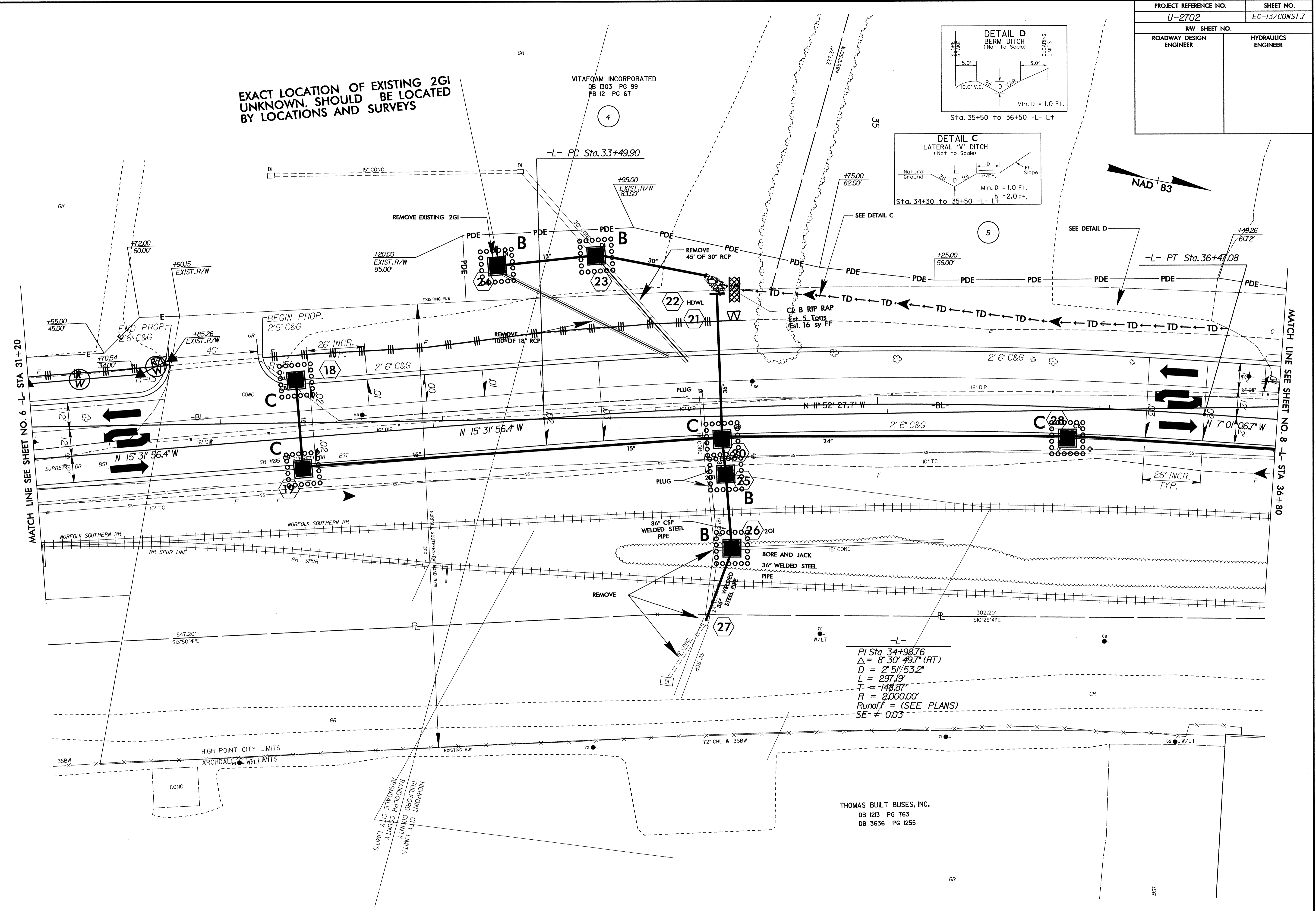
PROJECT REFERENCE NO.	SHEET NO.
U-2702	EC-13/CONST.7
R/W SHEET NO.	
ROADWAY DESIGN ENGINEER	HYDRAULICS ENGINEER



EXACT LOCATION OF EXISTING 2GI UNKNOWN. SHOULD BE LOCATED BY LOCATIONS AND SURVEYS

VITAFQAM INCORPORATED
DB 1303 PG 99
PB 12 PG 67

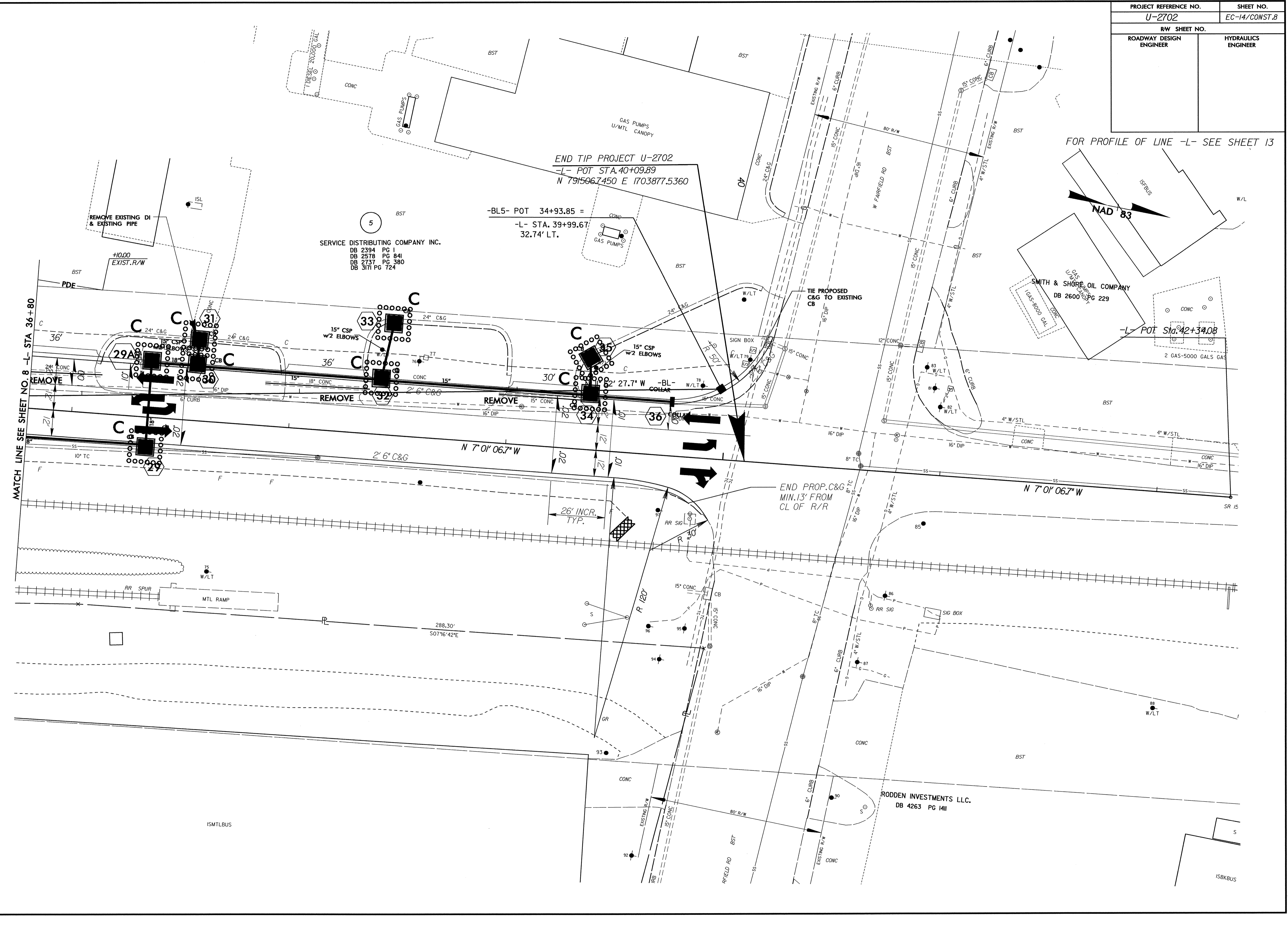
THOMAS BUILT BUSES, INC.
DB 1213 PG 763
DB 3636 PG 1255



-L-
PI Sta 34+98.76
 $\Delta = 8' 30' 49.7''$ (RT)
 $D = 2' 51' 53.2''$
 $L = 297.19'$
 $T = 148.87'$
 $R = 2,000.00'$
Runoff = (SEE PLANS)
 $SE = 0.03$

28-JAN-2008 14:46
G:\projects\2702\environmental\design\2702.ec.psh.s7.dgn
Blackburn AT HENRY457

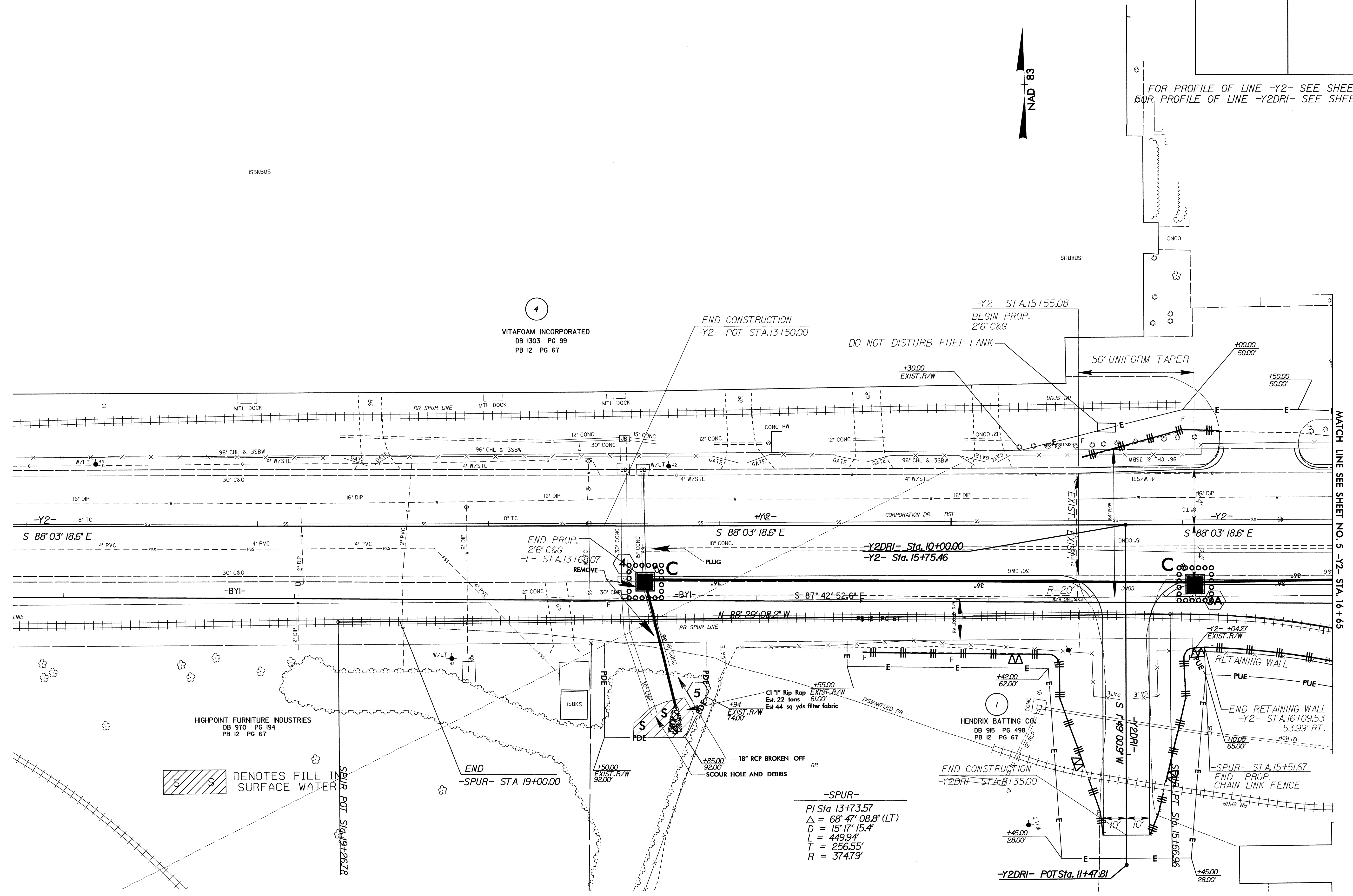
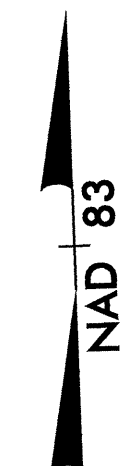
PROJECT REFERENCE NO.	SHEET NO.
U-2702	EC-14/CONST.8
R/W SHEET NO.	
ROADWAY DESIGN ENGINEER	HYDRAULICS ENGINEER



28-JAN-2008 14:48
 s:\tip\projects\U-2702\environmental\design\U2702.ec.psh_s8.dgn
 BLACKBURN AT 11/21/07

PROJECT REFERENCE NO. U-2702	SHEET NO. EC-15/CONST.9
RW SHEET NO.	
ROADWAY DESIGN ENGINEER	HYDRAULICS ENGINEER

FOR PROFILE OF LINE -Y2- SEE SHEET 15
FOR PROFILE OF LINE -Y2DRI- SEE SHEET 17



4
VITAFOAM INCORPORATED
DB 1303 PG 99
PB 12 PG 67

HIGHPOINT FURNITURE INDUSTRIES
DB 970 PG 194
PB 12 PG 67

SPUR POT STA. 19+26.78
DENOTES FILL IN SURFACE WATER

-SPUR-
PI Sta 13+73.57
Δ = 68° 47' 08.8" (LT)
D = 15' 17" 15.4"
L = 449.94'
T = 256.55'
R = 374.79'

MATCH LINE SEE SHEET NO. 5 -Y2- STA. 16+65

28-JAN-2008 14:51
g:\tippro\jects\U-2702\environmental\design\U2702-ec-psh-s9.dgn
B:\blackburn\A1\REN\24547