

STATE OF NORTH CAROLINA
DIVISION OF HIGHWAYS

STATE PROJECT REFERENCE NO.	SHEET NO.
B-4172	TCP-1

**PLAN FOR PROPOSED
TRAFFIC CONTROL, MARKING & DELINEATION
LENOIR COUNTY**

B-4172

ROADWAY STANDARD DRAWINGS

THE FOLLOWING ROADWAY STANDARDS AS APPEAR IN "ROADWAY STANDARD DRAWINGS"- PROJECT SERVICES UNIT-N.C. DEPARTMENT OF TRANSPORTATION-RALEIGH, N.C., DATED JULY 2006 ARE APPLICABLE TO THIS PROJECT AND BY REFERENCE HEREBY ARE CONSIDERED A PART OF THESE PLANS:

STD. NO.	TITLE
1101.03	TEMPORARY ROAD CLOSURES
1101.05	WORK ZONE VEHICLE ACCESSES
1110.01	STATIONARY WORK ZONE SIGNS
1145.01	BARRICADES
1205.01	PAVEMENT MARKINGS - LINE TYPES AND OFFSETS
1205.02	PAVEMENT MARKINGS - 2 LANE AND MULTILANE ROADWAYS
1205.12	PAVEMENT MARKINGS - BRIDGES
1250.01	PAVEMENT MARKER SPACING
1251.01	RAISED PAVEMENT MARKERS - TEMPORARY AND PERMANENT
1261.01	GUARDRAIL AND BARRIER DELINEATOR SPACING
1261.02	GUARDRAIL AND BARRIER DELINEATOR TYPES
1262.01	GUARDRAIL END DELINEATION

INDEX OF SHEETS

SHEET NO.	TITLE
TCP-1	LIST OF APPLICABLE ROADWAY STANDARD DRAWINGS, INDEX OF SHEETS, LEGEND AND PAVEMENT MARKING SCHEDULE.
TCP-2	GENERAL NOTES, LOCAL NOTES AND PHASING.
TCP-3 & 4	OFF-SITE DETOUR

LEGEND

- GENERAL**
- DIRECTION OF TRAFFIC FLOW
 - NORTH ARROW
 - PROPOSED PVMT. EXIST. PVMT.
 - WORK AREA
 - REMOVAL OF EXISTING PAVEMENT

TRAFFIC CONTROL DEVICES

- TYPE I BARRICADE
- TYPE II BARRICADE
- TYPE III BARRICADE
- CONE
- DRUM SKINNY DRUM
- FLASHING ARROW PANEL (TYPE C)
- STATIONARY SIGN
- PORTABLE SIGN
- STATIONARY OR PORTABLE SIGN
- CRASH CUSHION
- CHANGEABLE MESSAGE SIGN
- TRUCK MOUNTED IMPACT ATTENUATOR (TMIA)
- POLICE
- FLAGGER

PAVEMENT MARKINGS

- CRYSTAL/CRYSTAL PAVEMENT MARKER
- YELLOW/YELLOW PAVEMENT MARKER
- CRYSTAL/RED PAVEMENT MARKER
- PAVEMENT MARKING SYMBOLS

FINAL PAVEMENT MARKING SCHEDULE

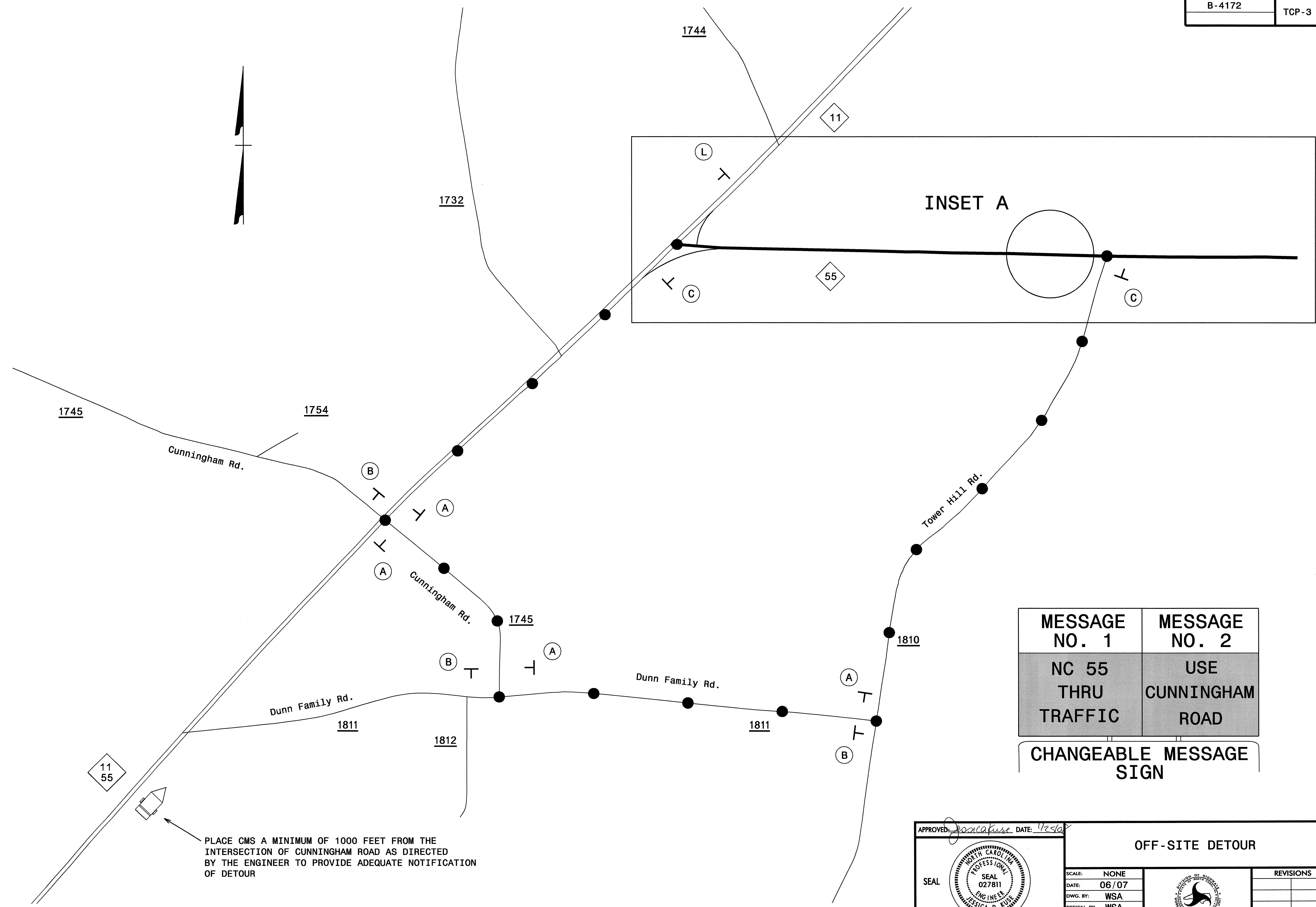
SYMBOL	DESCRIPTION	PAY ITEM QUANTITY BREAKDOWN		TOTAL QUANTITY	
		QUANTITY	UNIT	QUANTITY	UNIT
PAINT (24")					
P4	WHITE STOPBAR (2X)	48	LF	48	LF
COLD APPLIED PLASTIC (4") TYPE 3 - PERMANENT WET REFLECTIVE					
CA	WHITE EDGELINE	190	LF	380	LF
CI	YELLOW DOUBLE CENTER	190	LF		
PAINT (4")					
PA	WHITE (2X)	50000	LF	100000	LF
PI	YELLOW (2X)	50000	LF		
THERMOPLASTIC (4", 120 MILS) STANDARD GLASS BEADS					
TI	YELLOW DOUBLE CENTER	1460	LF	1460	LF
THERMOPLASTIC (4", 90 MILS) STANDARD GLASS BEADS					
TA	WHITE EDGELINE	1536	LF	1536	LF
PAINT MARKING SYMBOLS					
QB	RIGHT TURN ARROW (2X)	2	EA	4	EA
QD	COMBO.STRAIGHT/LEFT (2X)	2	EA		
PERMANENT RAISED PAVEMENT MARKERS					
MA	YELLOW & YELLOW	166	EA	166	EA

NOTE: FOR EACH PAINT PAVEMENT MARKING ITEM 2X IMPLIES TWO APPLICATIONS

APPROVED:	PLAN PREPARED BY: N.C.D.O.T. WORK ZONE TRAFFIC CONTROL UNIT
DATE: 3/18/08	
SEAL:	J. S. BOURNE, P.E. TRAFFIC CONTROL ENGINEER
	J. S. KITE, P.E. TRAFFIC CONTROL PROJECT ENGINEER
	J. D. KUSE, P.E. TRAFFIC CONTROL PROJECT DESIGN ENGINEER
	W. S. ARMSTRONG TRAFFIC CONTROL DESIGN ENGINEER / TECHNICIAN

I:\MAR-2008\1510\13044\24510010\Project\Stores\Proj\Tip\projects\b\4172\traffic\control\top\b-4172-tc-top_01.dgn
c:\dss\h116 AT WZ12237500

TIP PROJECT:

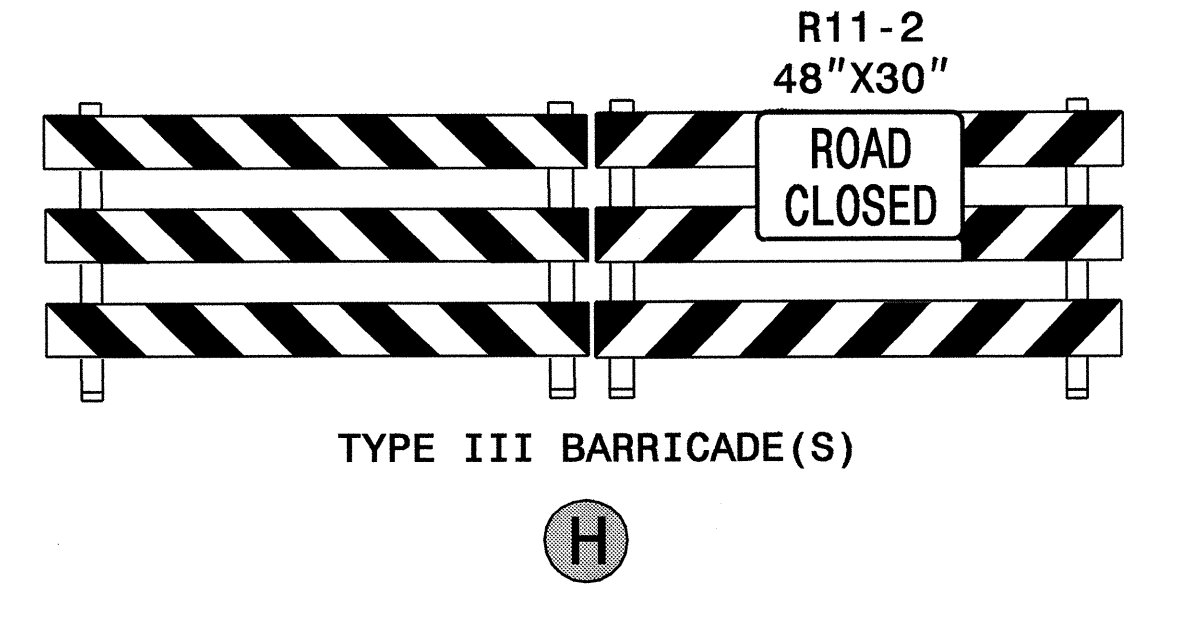
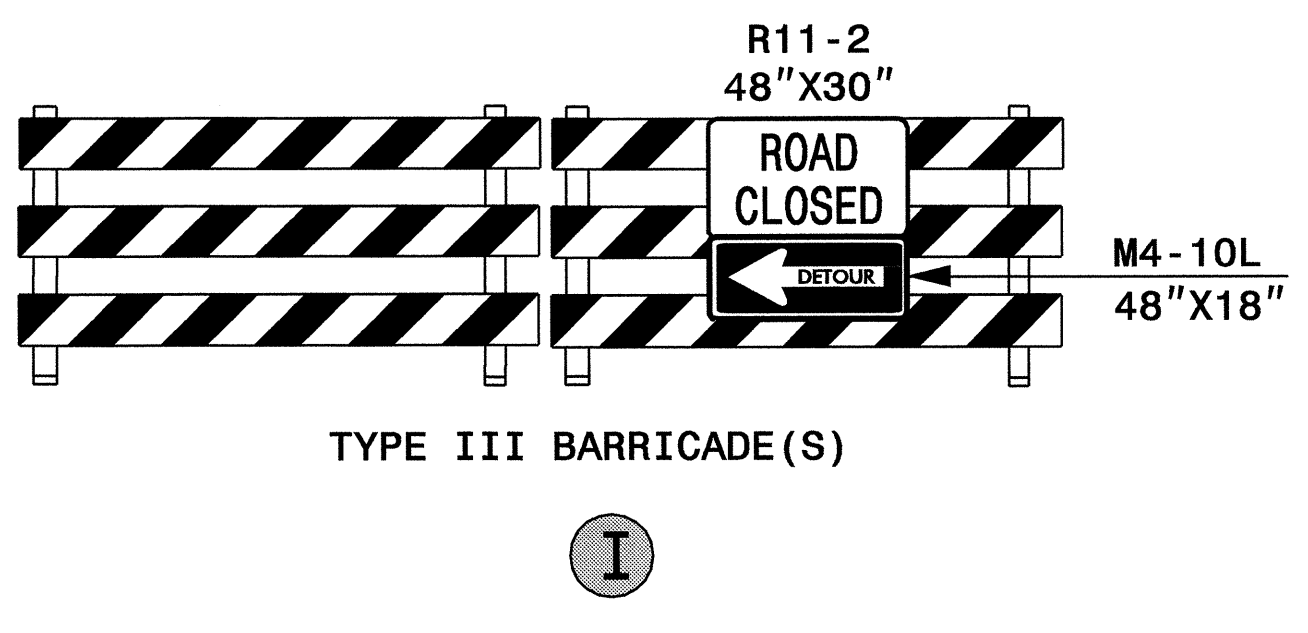
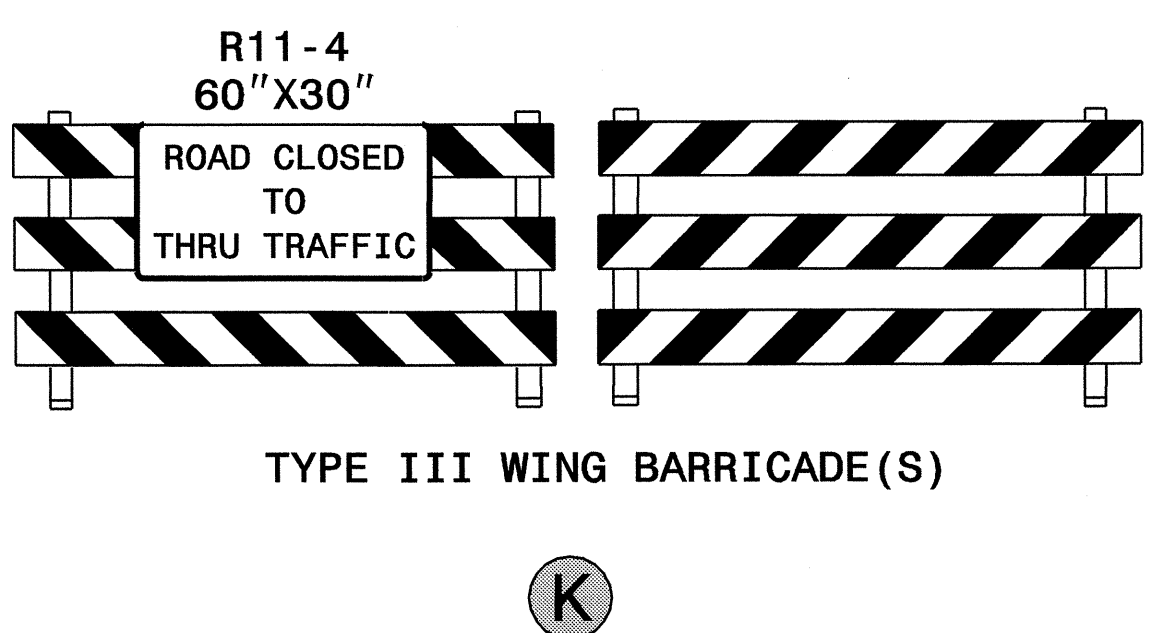
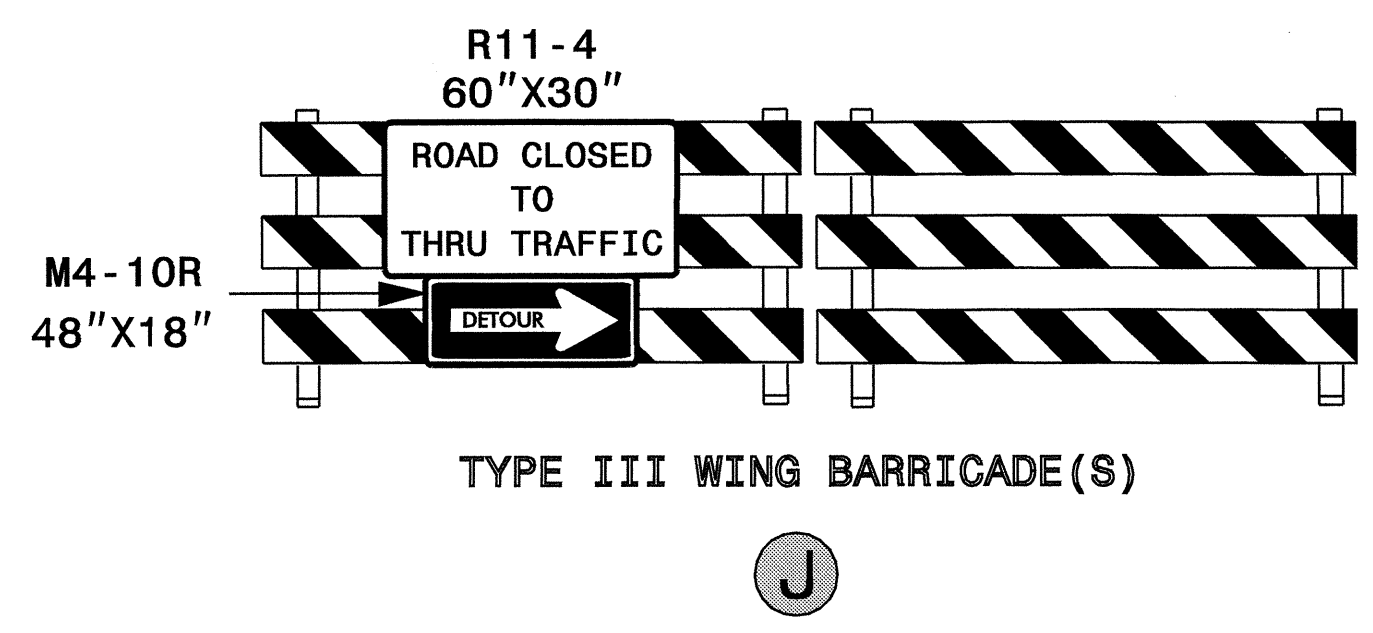
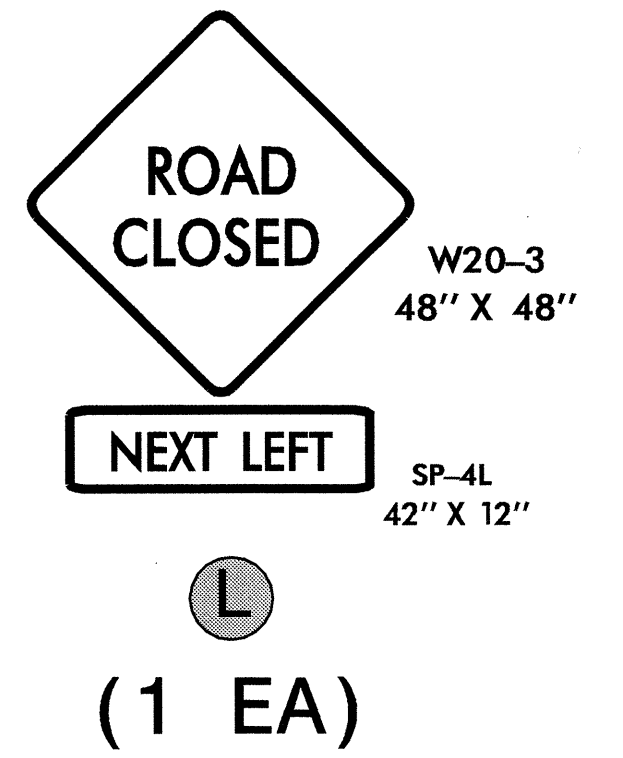
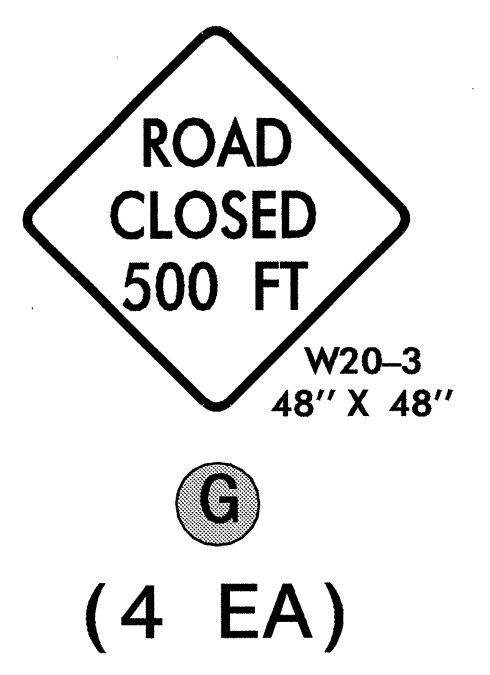
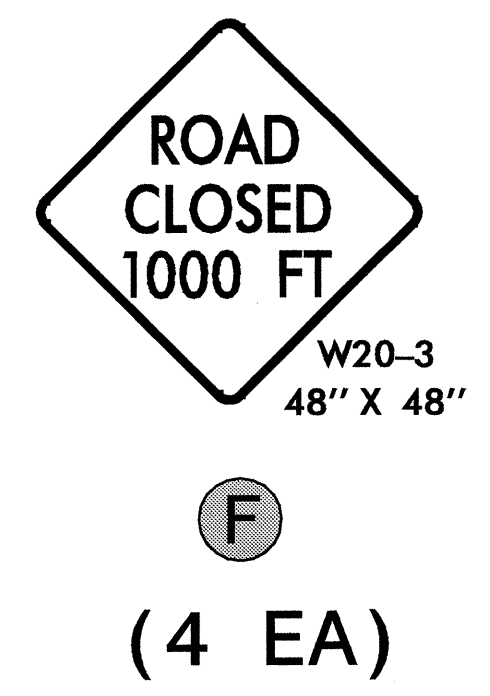
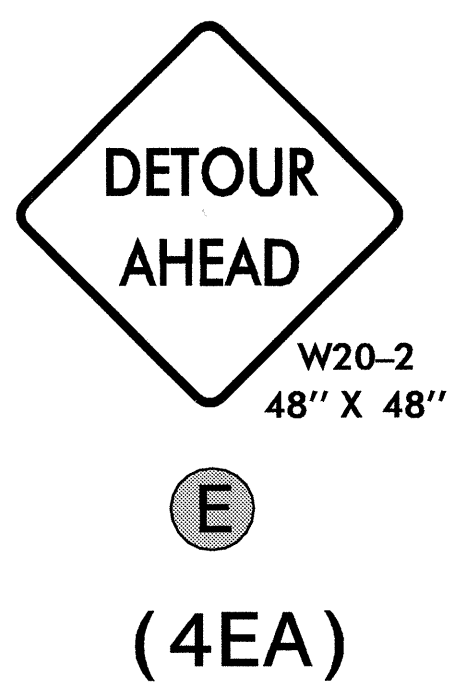
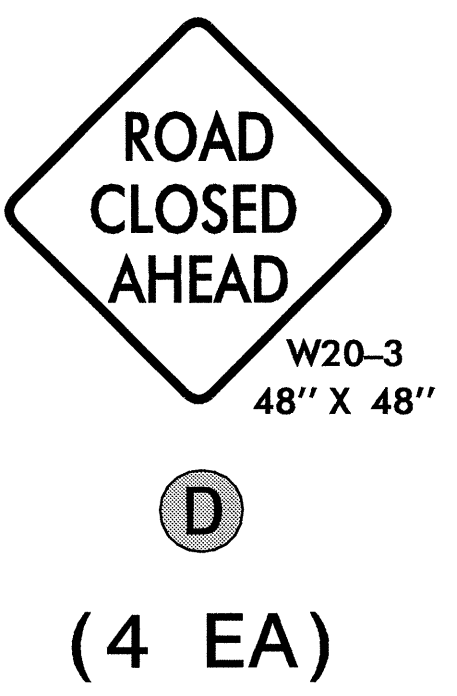
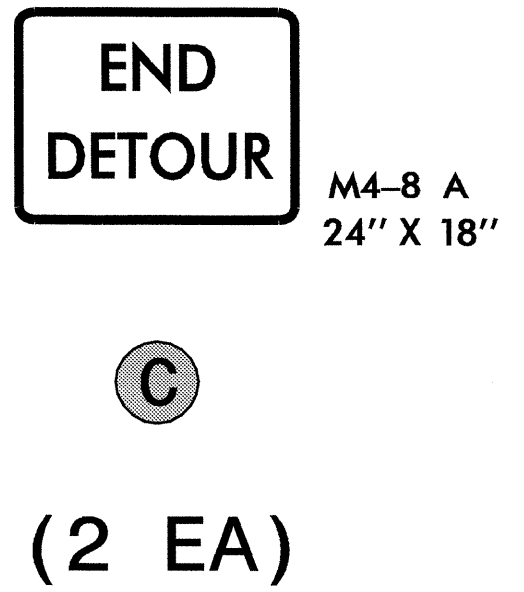
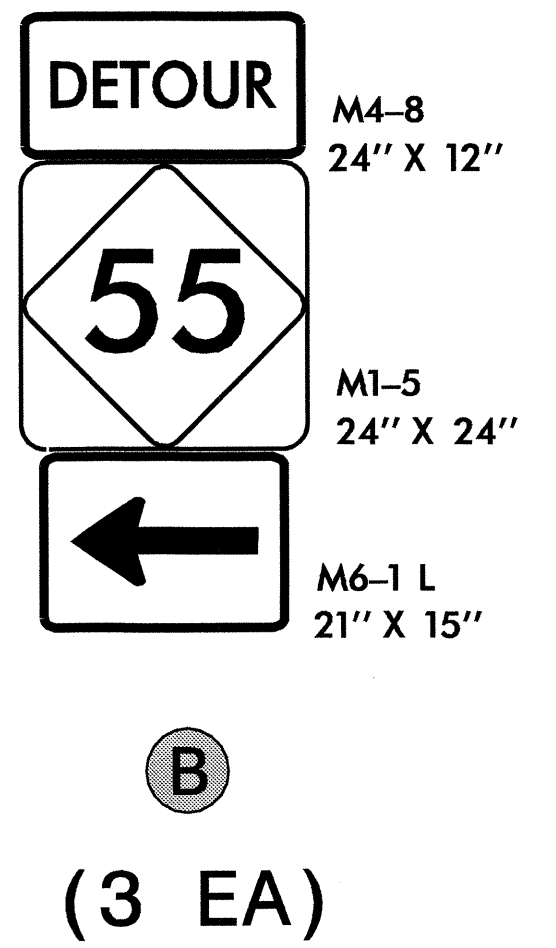
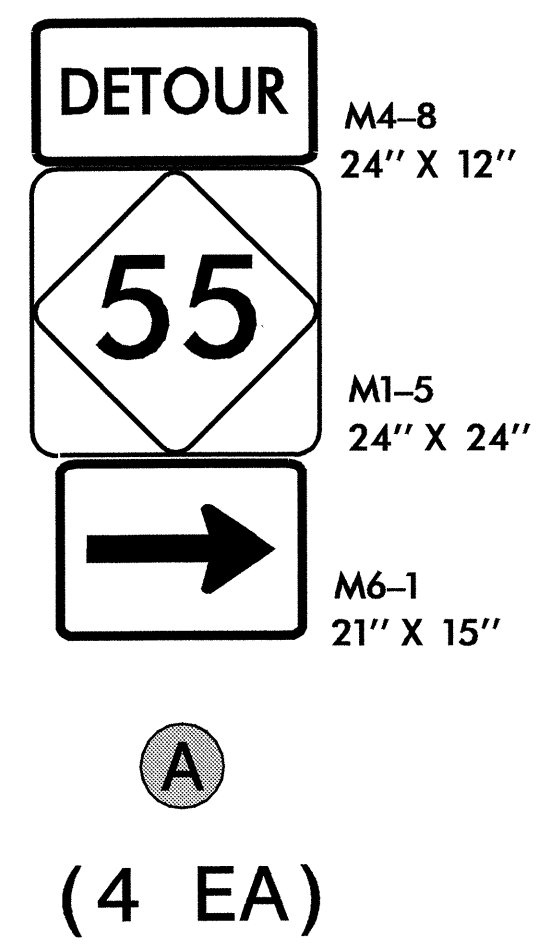
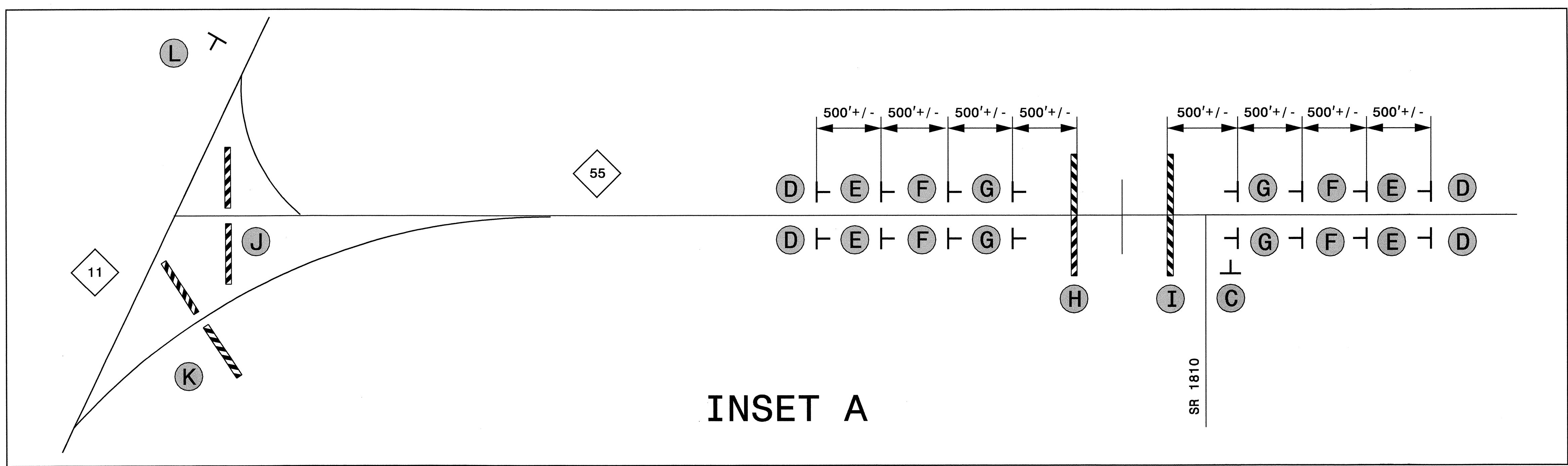


MESSAGE NO. 1	MESSAGE NO. 2
NC 55 THRU TRAFFIC	USE CUNNINGHAM ROAD
CHANGEABLE MESSAGE SIGN	

PLACE CMS A MINIMUM OF 1000 FEET FROM THE INTERSECTION OF CUNNINGHAM ROAD AS DIRECTED BY THE ENGINEER TO PROVIDE ADEQUATE NOTIFICATION OF DETOUR

APPROVED: <i>Joscafuse</i> DATE: 1/25/07	OFF-SITE DETOUR		
	SCALE: NONE		
	DATE: 06/07		REVISIONS
	DWG. BY: WSA		
	DESIGN BY: WSA		
REVIEWED BY: JDK			

25-JAN-2008 15:17
 \\dot\dfscoo\proj\proj\traffic\trafficcontrol\tcp\B-4172.TC.TCP.03.dgn
 AT WZTC224239
 sarms@strong



NOTE:
BARRICADES USED TO CLOSE A ROADWAY SHALL EXTEND ACROSS THE ENTIRE ROADWAY. WHERE LOCAL TRAFFIC MUST BE MAINTAINED, THEY MAY BE PLACED IN A STAGGERED POSITION.

APPROVED: *[Signature]* DATE: 1/25/07

OFF-SITE DETOUR SIGNING	
SCALE: NONE	REVISIONS
DATE: 06/07	
DWG. BY: WSA	
DESIGN BY: WSA	
REVIEWED BY: JDK	

25-JAN-2008 10:07
 C:\p0010\p01\TrafficControl\top\B-4172_TC_TCP_04.dgn
 AT: WZTC224239
 SARMESTON@