

**TIP PROJECT: B-4135**

STATE OF NORTH CAROLINA  
DIVISION OF HIGHWAYS

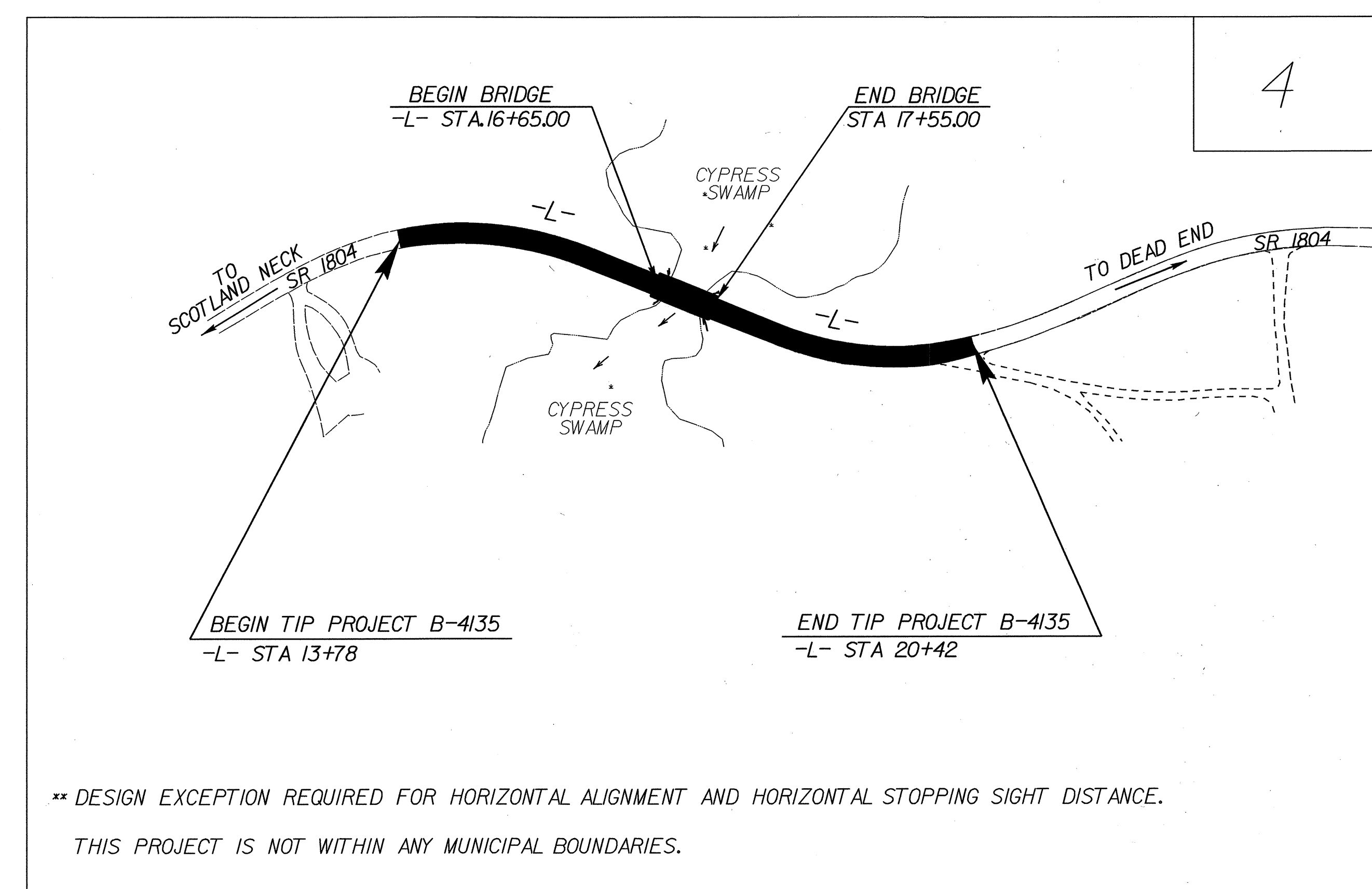
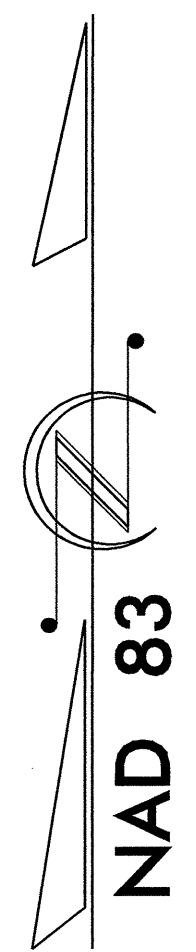
---

PLAN FOR PROPOSED  
HIGHWAY EROSION CONTROL

**HALIFAX COUNTY**

**LOCATION: BRIDGE 72 OVER CYPRESS SWAMP ON SR 1804**

**TYPE OF WORK: GRADING, DRAINAGE, PAVING, AND STRUCTURES**



\*\* DESIGN EXCEPTION REQUIRED FOR HORIZONTAL ALIGNMENT AND HORIZONTAL STOPPING SIGHT DISTANCE.  
THIS PROJECT IS NOT WITHIN ANY MUNICIPAL BOUNDARIES.

STATE	STATE PROJECT REFERENCE NO.	SHEET NO.	TOTAL SHEETS
N.C.	B-4135	EC-1	
STATE PROJ. NO.	F.A. PROJ. NO.	DESCRIPTION	

**EROSION AND SEDIMENT CONTROL MEASURES**

Std. #	Description	Symbol
	Streambank Reforestation.....	
1630.03	Temporary Silt Ditch.....	
1630.05	Temporary Diversion.....	
1605.01	Temporary Silt Fence.....	
1606.01	Special Sediment Control Fence.....	
1622.01	Temporary Berms and Slope Drains.....	
1630.01	Riser Basin.....	
1630.02	Silt Basin Type B.....	
1633.01	Temporary Rock Silt Check Type-A.....	
	Temporary Rock Silt Check Type-B.....	
1634.01	Temporary Rock Sediment Dam Type-A.....	
1634.02	Temporary Rock Sediment Dam Type-B.....	
1635.01	Rock Pipe Inlet Sediment Trap Type-A.....	
1635.02	Rock Pipe Inlet Sediment Trap Type-B.....	
1630.04	Stilling Basin.....	
	Rock Inlet Sediment Trap:	
1632.01	Type A.....	
1632.02	Type B.....	
1632.03	Type C.....	
	Skimmer Basin.....	
	Tiered Skimmer Basin.....	
	Infiltration Basin.....	

**THIS PROJECT CONTAINS  
EROSION CONTROL PLANS  
FOR CLEARING AND  
GRUBBING PHASE OF  
CONSTRUCTION.**

**GRAPHIC SCALE**

0

PLANS

0

PROFILE (HORIZONTAL)

0

PROFILE (VERTICAL)

ROADSIDE ENVIRONMENTAL UNIT  
DIVISION OF HIGHWAYS  
STATE OF NORTH CAROLINA

Prepared in the Office of:  
**ROADSIDE ENVIRONMENTAL UNIT**  
1 South Wilmington St.  
Raleigh, NC 27611  
**2006 STANDARD SPECIFICATIONS**

Roadway Standard Drawings

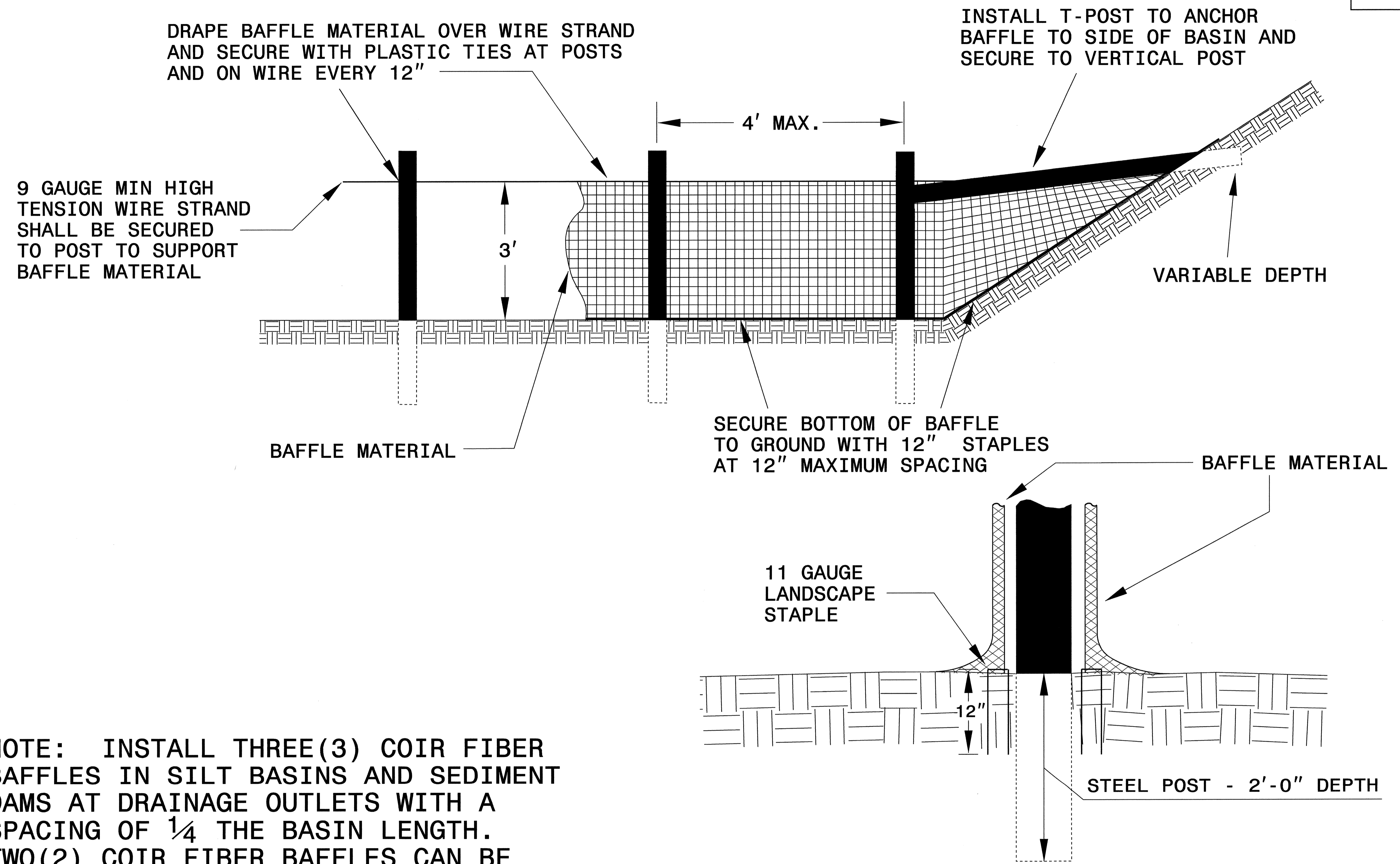
The following roadway english standards as appear in "Roadway Standard Drawings"- Roadway Design Unit - N. C. Department of Transportation - Raleigh, N. C., dated July 18, 2006 and the latest revision thereto are applicable to this project and by reference hereby are considered a part of these plans.

1605.01 Temporary Silt Fence	1632.03 Rock Inlet Sediment Trap Type C
1606.01 Special Sediment Control Fence	1633.01 Temporary Rock Silt Check Type A
1607.01 Gravel Construction Entrance	1634.02 Temporary Rock Sediment Dam Type B
1622.01 Temporary Berms and Slope Drains	

08-MAY-2008 10:39  
projects\64135\RoadsideEnvironmental\details\B4135\_rdl\_tsh.dgn  
pohan AT REN2312

PROJECT REFERENCE NO. B-4135	SHEET NO. EC-2
RW SHEET NO.	
ROADWAY DESIGN ENGINEER	HYDRAULICS ENGINEER

# COIR FIBER BAFFLE DETAIL



NOTE: INSTALL THREE(3) COIR FIBER BAFFLES IN SILT BASINS AND SEDIMENT DAMS AT DRAINAGE OUTLETS WITH A SPACING OF  $\frac{1}{4}$  THE BASIN LENGTH. TWO(2) COIR FIBER BAFFLES CAN BE INSTALLED IN SILT BASINS AND DAMS LESS THAN 20 FT. IN LENGTH WITH A SPACING OF  $\frac{1}{3}$  THE BASIN LENGTH.

BAFFLE MATERIAL SHALL BE SECURED TO THE BOTTOM AND SIDES OF BASIN USING 12" LANDSCAPE STAPLES



8/17/99

CLEARING AND GRUBBING  
EROSION CONTROL FOR  
CONSTRUCTION SHEET 4

NOTE:  
UTILIZE TEMPORARY ROCK SILT CHECK TYPE - A  
AS STILLING BASIN WHERE APPLICABLE.

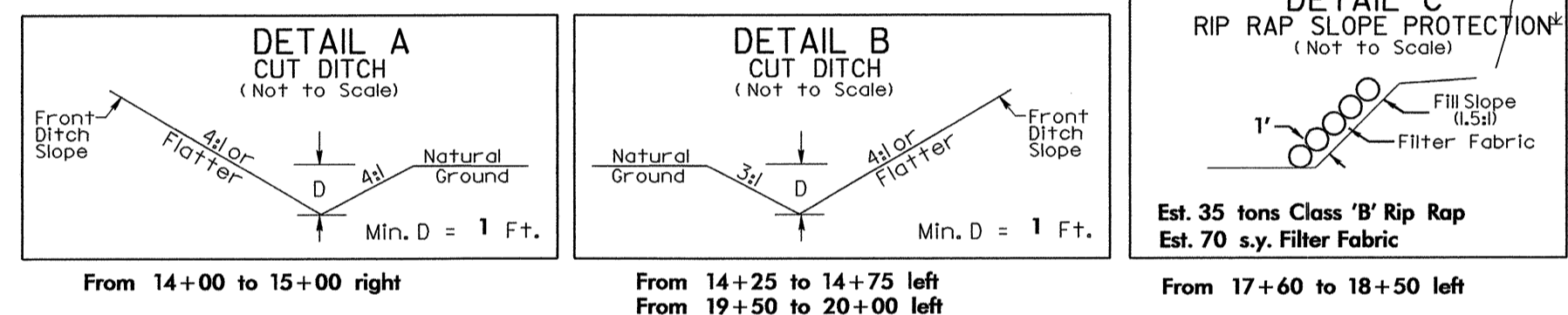
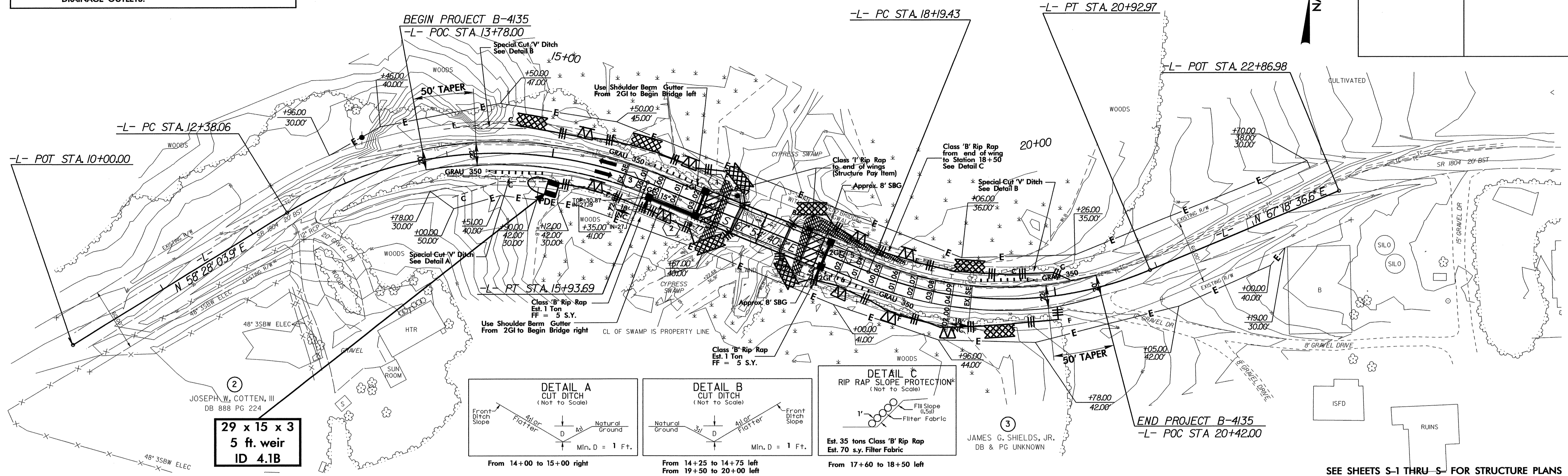
INSTALL FILTER FABRIC UNDER  
TEMPORARY ROCK SILT CHECK(S)  
TYPE A IN PERMITTED WETLANDS.

NOTE:  
PLACE TEMPORARY ROCK SEDIMENT DAMS TYPE - B  
AND TEMPORARY ROCK SILT CHECKS TYPE - A AT  
DRAINAGE OUTLETS.

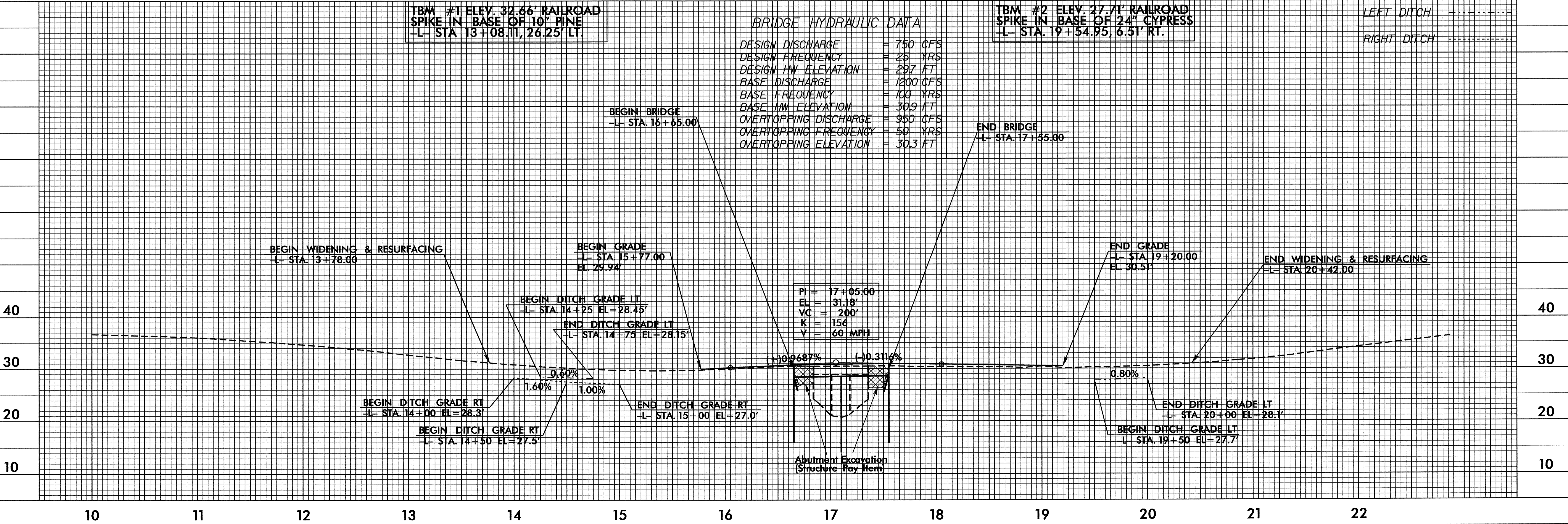
JAMES G. SHIELDS, JR.  
DB & PG UNKNOWN

JAMES G. SHIELDS, JR.  
DB & PG UNKNOWN

PROJECT REFERENCE NO. B-4135	SHEET NO. EC-4/CONST.4
R/W SHEET NO.	
ROADWAY DESIGN ENGINEER	HYDRAULICS ENGINEER



SEE SHEETS S-1 THRU S- FOR STRUCTURE PLANS



TBM #1 ELEV. 32.66' RAILROAD  
SPIKE IN BASE OF 10" PINE  
-L- STA. 13+08.11, 26.25' LT.

TBM #2 ELEV. 27.71' RAILROAD  
SPIKE IN BASE OF 24" CYPRESS  
-L- STA. 19+54.95, 6.51' RT.

BRIDGE HYDRAULIC DATA

DESIGN DISCHARGE	= 750 CFS
DESIGN FREQUENCY	= 25 YRS
DESIGN HW ELEVATION	= 29.7 FT
BASE DISCHARGE	= 1200 CFS
BASE FREQUENCY	= 100 YRS
BASE HW ELEVATION	= 30.9 FT
OVERTOPPING DISCHARGE	= 950 CFS
OVERTOPPING FREQUENCY	= 50 YRS
OVERTOPPING ELEVATION	= 30.3 FT

08-JAN-2008 10:33  
g:\c:\p\proj\enviro\design\b4135\_r.dwg, 4psh.dgn  
REV 2/2002

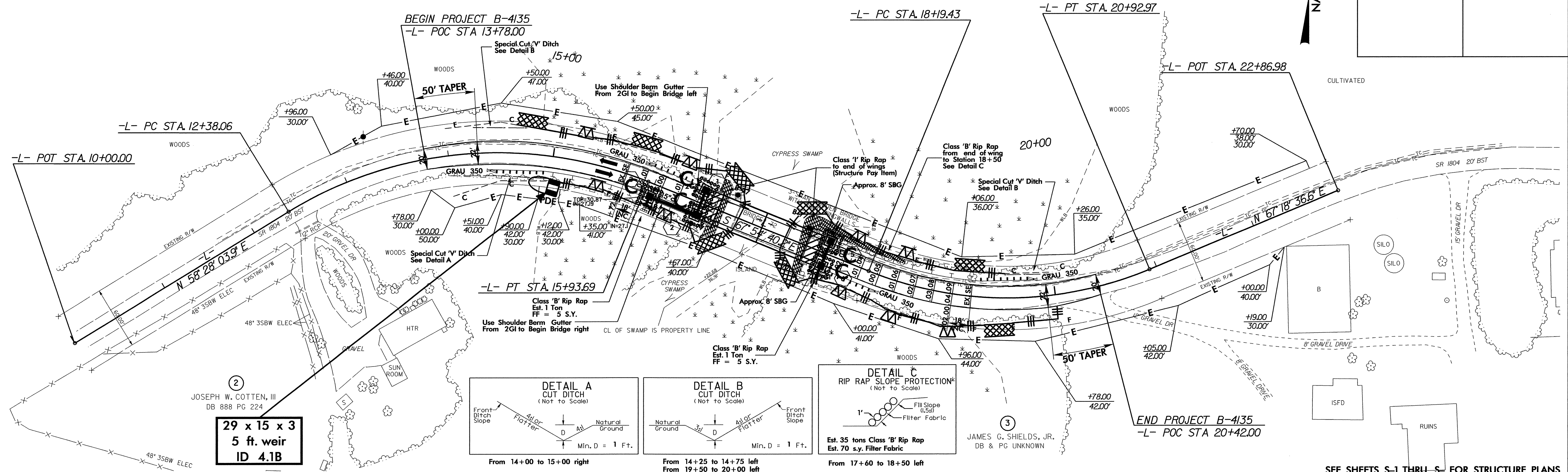
8/17/99

NOTE: UTILIZE TEMPORARY ROCK SILT CHECK TYPE - A AS STILLING BASIN WHERE APPLICABLE.

INSTALL FILTER FABRIC UNDER TEMPORARY ROCK SILT CHECK(S) TYPE A IN PERMITTED WETLANDS.

JAMES G. SHIELDS, JR. DB & PG UNKNOWN

PROJECT REFERENCE NO.	SHEET NO.
B-4135	EC-5/CONST.4
R/W SHEET NO.	
ROADWAY DESIGN ENGINEER	HYDRAULICS ENGINEER



SEE SHEETS S-1 THRU S- FOR STRUCTURE PLANS

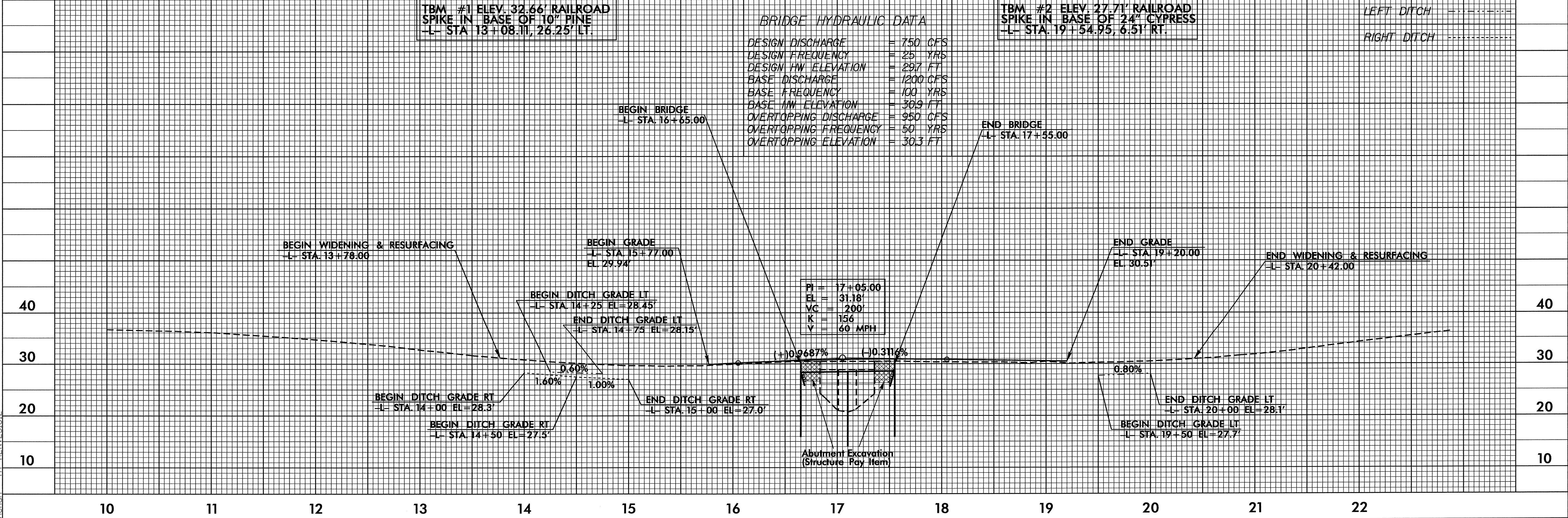
TBM #1 ELEV. 32.66' RAILROAD SPIKE IN BASE OF 10" PINE -L- STA. 13+08.11, 26.25' LT.

BRIDGE HYDRAULIC DATA

DESIGN DISCHARGE	= 750 CFS
DESIGN FREQUENCY	= 25 YRS
DESIGN HW ELEVATION	= 29.7 FT
BASE DISCHARGE	= 1200 CFS
BASE FREQUENCY	= 100 YRS
BASE HW ELEVATION	= 30.9 FT
OVERTOPPING DISCHARGE	= 950 CFS
OVERTOPPING FREQUENCY	= 50 YRS
OVERTOPPING ELEVATION	= 30.3 FT

TBM #2 ELEV. 27.71' RAILROAD SPIKE IN BASE OF 24" CYPRESS -L- STA. 19+54.95, 6.51' RT.

LEFT DITCH  
RIGHT DITCH



08-JAN-2008 10:40:51\supp\proj\ec-5\environmental\design\b4135\_rdy\_4psh.dgn