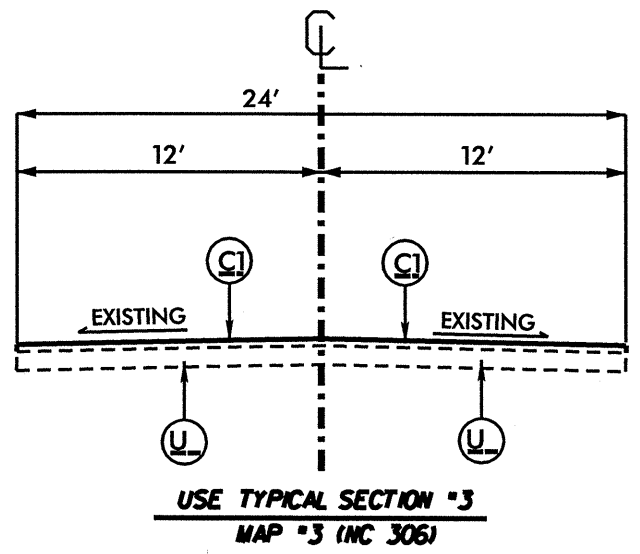
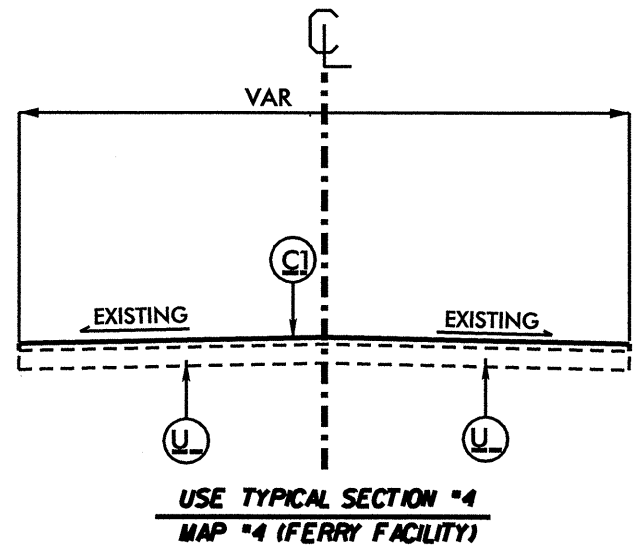
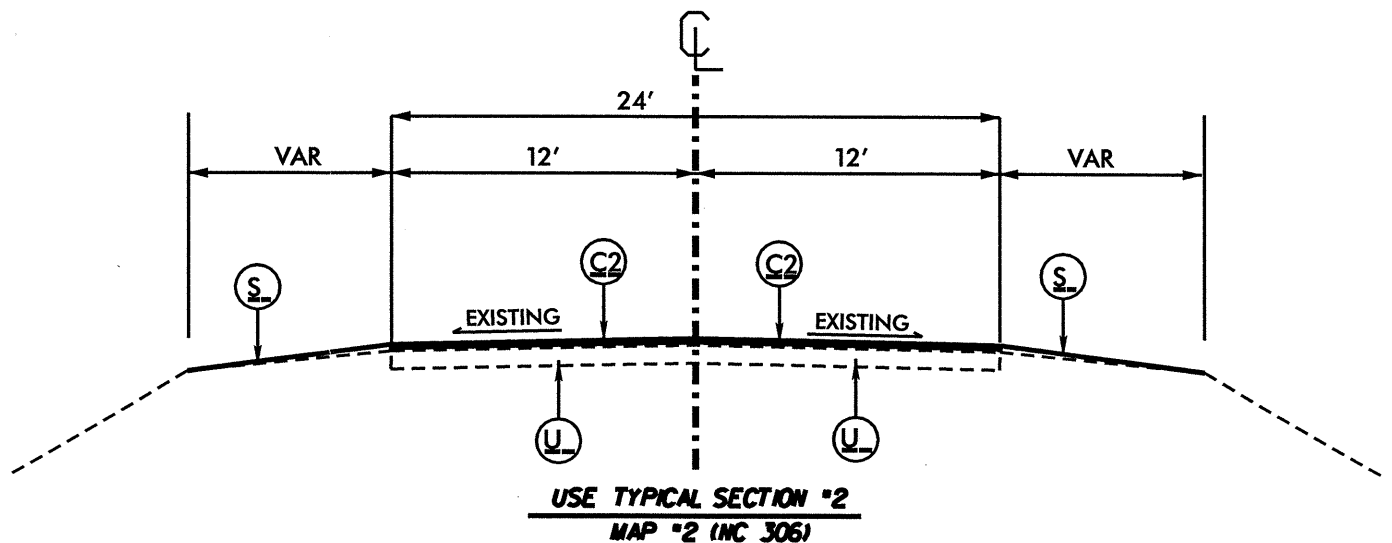
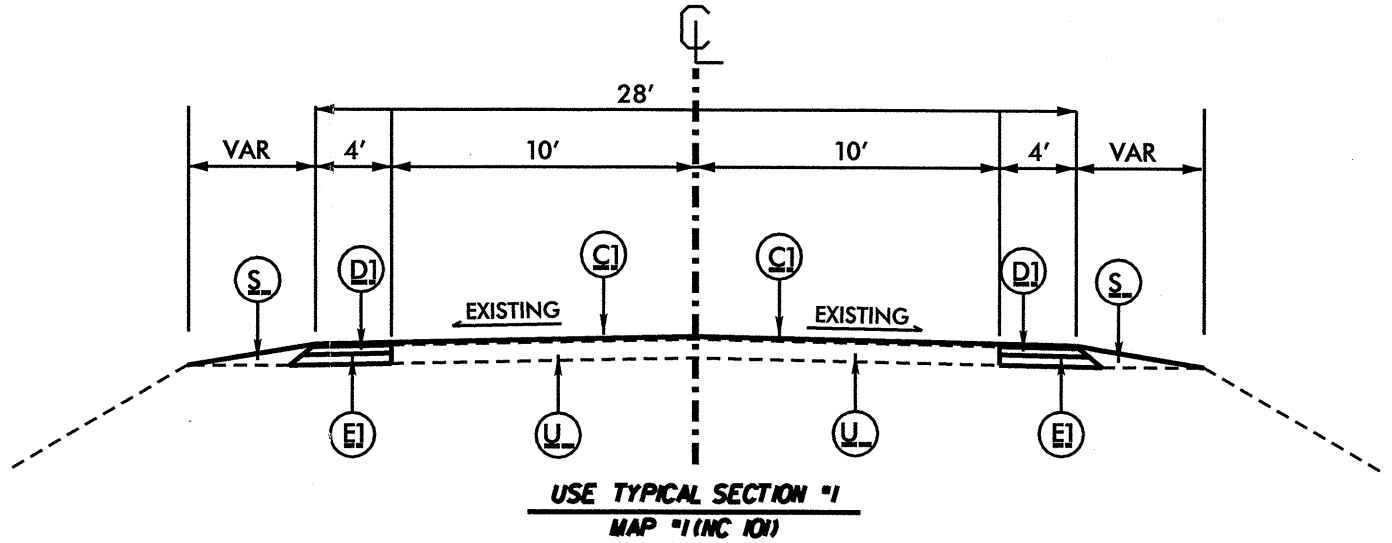


PAVEMENT SCHEDULE	
C1	PROP. APPROX. 1½" ASPHALT CONC. SURFACE COURSE, TYPE S9.5B, AT AN AVERAGE RATE OF 168 LBS. PER SQ. YD.
C2	PROP. APPROX. 3" ASPHALT CONC. SURFACE COURSE, TYPE S9.5B, AT AN AVERAGE RATE OF 168 LBS. PER SQ. YD. IN EACH OF TWO LAYERS.
D1	PROP. APPROX. 3" ASPHALT CONC. INTERMEDIATE COURSE, TYPE I19.0B, AT AN AVERAGE RATE OF 342 LB. PER SQ.YD.
E1	PROP. APPROX. 5½" ASPHALT CONC. BASE COURSE, TYPE B25.0B, AT AN AVERAGE RATE OF 627 LB. PER SQ.YD.
S	SHOULDER RECONSTRUCTION
U	EXISTING PAVEMENT



NOTE: RESURFACE ALL EXISTING ASPHALT AT FERRY FACILITY

PROJECT NO.	SHEET NO.	TOTAL NO.
2CR.10251.6	3	

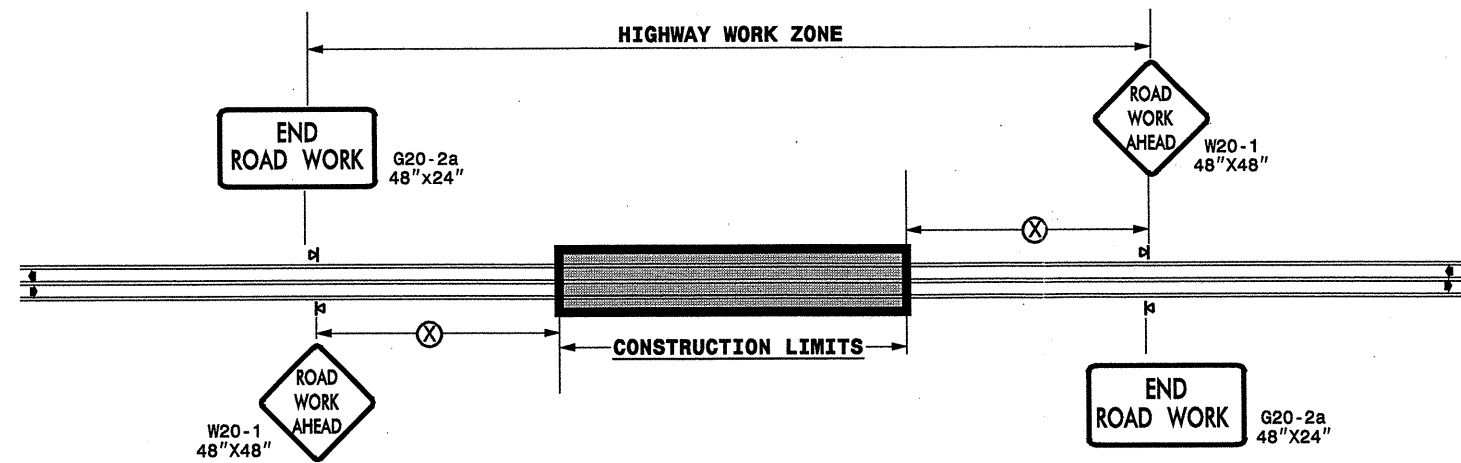
SUMMARY OF QUANTITIES

PROJECT NO	COUNTY	MAP NO	ROUTE	DESCRIPTION	TYP NO	LENGTH MI	WIDTH FT	SHOULDER RECONSTRUCTION SMI	BASE COURSE, B25.0B TONS	INTERMEDIATE COURSE, 119.0B TONS	SURFACE COURSE, S9.5B TONS	PG 64-22 PLANT MIX TONS	ADJ. OF MANHOLES EA	ADJ. OF METER OR VALVE BOX EA	SEED & MULCHING AC	
2CR.10251.6	Craven	1	NC 101	FROM HENDERSON DRIVE TO COUNTY LINE	1	9	28	18	15,401	8,194	13,721	1,871	1	1	22.00	
		2	NC 306	FROM NC 101 1.6 MILES	2	1.6	24	3.2			4,207	252			4.00	
		3	NC 306	FROM 1.6 MILES TO FERRY FACILITIES	3	2.9	24					3,793	228			
		4	NC 306	FERRY FACILITIES	4	0.5	10					500	30			
TOTAL FOR PROJ NO. 2CR.10251.6					14		21.2	15,401	8,194	22,221	2,381	1	1	26.00		
GRAND TOTAL					14		21.2	15,401	8,194	22,221	2,381	1	1	26.00		

THERMOPLASTIC AND PAINT QUANTITIES

PROJECT NO	COUNTY	MAP NO	ROUTE	DESCRIPTION	4685000000-E		4686000000-E		4697000000-E		4710000000-E		4721000000-E		4725000000-E		4810000000-E		4810000000-E	
					4" X 90 M WHITE THERMO LF	4" X 120 M YELLOW THERMO LF	8" X 120 M YELLOW THERMO LF	24" X 120 M WHITE THERMO LF	THERMO MSG SCHOOL 120 M EA	THERMO LT ARROW 90 M EA	THERMO STR ARROW 90 M EA	THERMO RT ARROW 90 M EA	THERMO STR & RT ARROW 90 M EA	4" WHITE PAINT LF	4" YELLOW PAINT LF					
2CR.10251.6	Craven	1	NC 101	FROM HENDERSON DRIVE TO COUNTY LINE	96,840	59,400	300	550	6	6	7	1	3							
		2	NC 306	FROM NC 101 1.6 MILES	17,216	10,560		100							17,216	10,560				
		3	NC 306	FROM 1.6 MILES TO FERRY FACILITIES	31,204	19,140														
		4	NC 306	FERRY FACILITIES	500	1,000		100		3	3	3								
TOTAL FOR PROJ NO. 2CR.10251.6				145,760	90,100	300	750	6	9	10	4	3	17,216	10,560						
GRAND TOTAL				145,760	90,100	300	750	6	9	10	4	3	17,216	10,560						

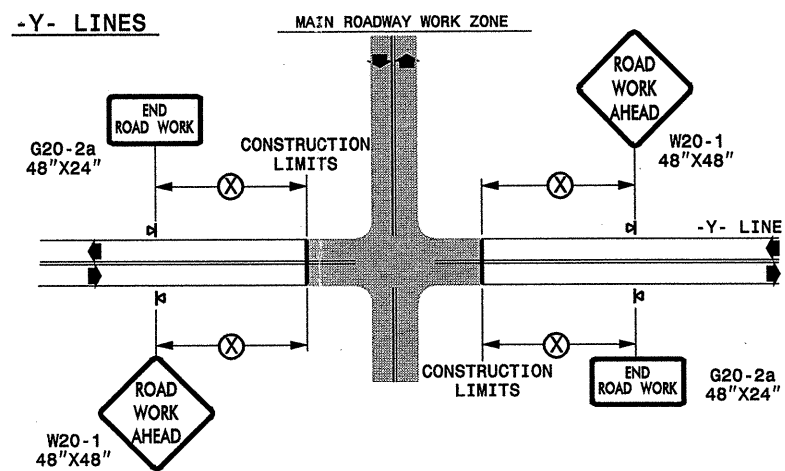
TWO-WAY UNDIVIDED ** (L-LINES)



POSTED SPEED LIMIT (M.P.H.)	RECOMMENDED MINIMUM SIGN SPACING
≤ 50	500'
≥ 55	1000'

STATE OF NORTH CAROLINA
DEPT. OF TRANSPORTATION
DIVISION OF HIGHWAYS
RALEIGH, N.C.

ROADWAYS INTERSECTING ALONG 2 WAY UNDIVIDED WORK ZONE (Y-LINES)



GENERAL NOTES

- USE FLUORESCENT ORANGE SHEETING (TYPE VII OR HIGHER) ON ALL ADVANCE WORK ZONE SIGNS.
- DO NOT INSTALL ADVANCE WARNING SIGNS MORE THAN 3 DAYS PRIOR TO BEGINNING OF WORK.
- ALL SIGN SPACING DIMENSIONS ARE APPROXIMATE, FIELD ADJUST AS NECESSARY OR AS DIRECTED.
- USE PORTABLE WORK ZONE SIGNS ONLY WITH PORTABLE WORK ZONE SIGN STANDS SPECIFICALLY DESIGNED FOR ONE ANOTHER. PORTABLE WORK ZONE SIGNS MAY BE ROLL UP OR APPROVED COMPOSITE.
- PROVIDE PORTABLE WORK ZONE SIGN STANDS, PORTABLE SIGNS AND SIGN SHEETING WHICH ARE LISTED ON THE NORTH CAROLINA DEPARTMENT OF TRANSPORTATION'S APPROVED PRODUCT LIST OR ACCEPTED AS TRAFFIC QUALIFIED BY THE TRAFFIC CONTROL UNIT.
- ** TWO-WAY UNDIVIDED ADVANCE WARNING SIGN CONFIGURATION MAY BE USED ON URBAN MULTI-LANE FACILITIES WHERE CONDITIONS LIMIT THE USE OF DUAL MOUNTED SIGNS AS DETERMINED BY THE ENGINEER.

LEGEND

⊞ PORTABLE SIGN

← DIRECTION OF TRAFFIC FLOW

DETAIL DRAWING
FOR TWO-WAY UNDIVIDED
WORK ZONE WARNING SIGNS

SHEET 1 OF 1

APPROVED: _____	DATE: _____	DETAIL DRAWING FOR TWO-WAY UNDIVIDED ADVANCED WORK ZONE WARNING SIGNS	
SEAL			
SCALE: NONE		REVISIONS	
DATE:		7-98	10/01
DWG. BY:		10-98	03/04
DESIGN BY:		01/01	11/04
REVIEWED BY:			

I:\MAR-2008\15452
 \DOT\DFSR0010\GROUPS\WZTCC\design\resurfacing\resurfacing2007\div02\c202055_2cr102516_c202055_2cr102516_2wayundivurbfr.wys\july2006.dgn
 psey@more AT WZTCC237502