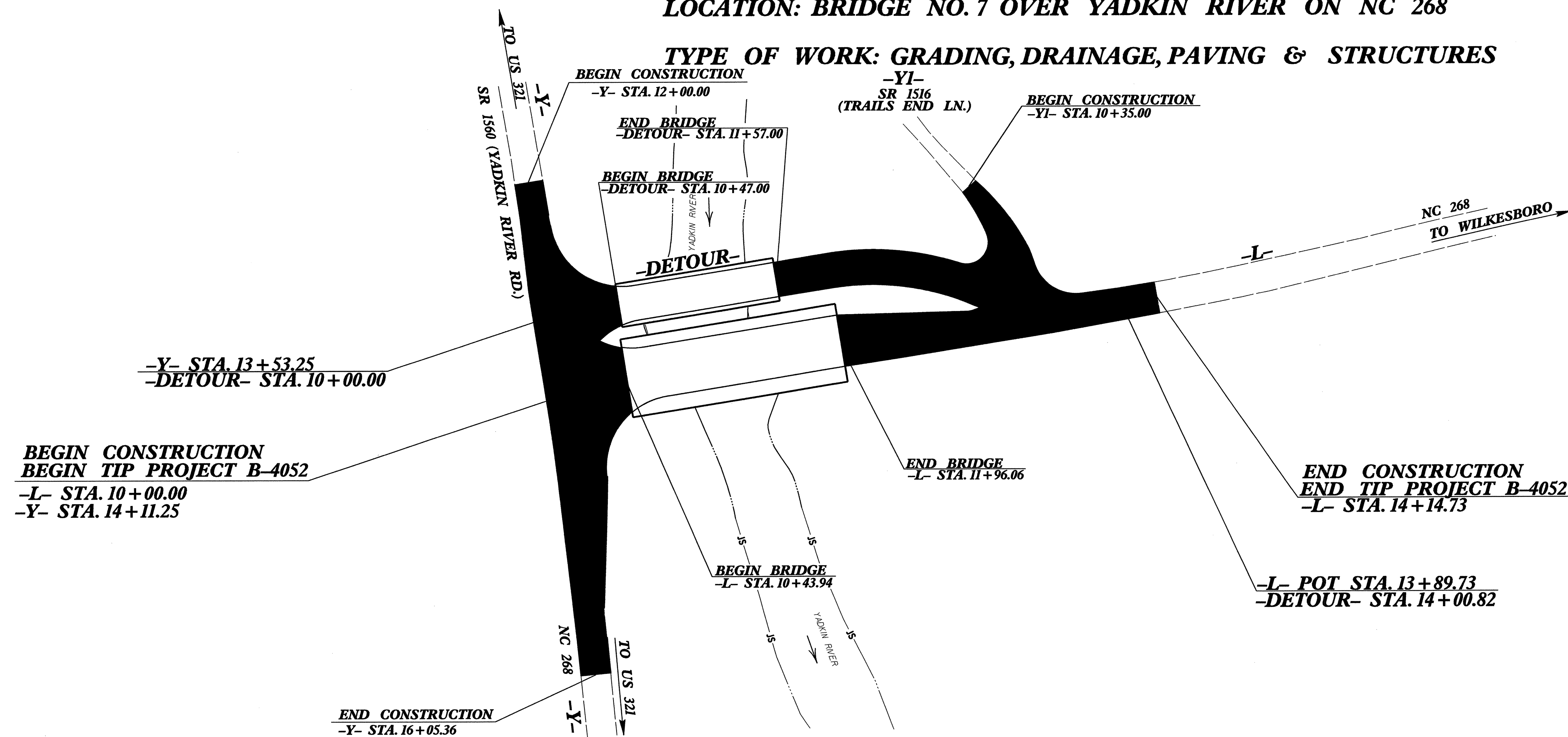


TIP PROJECT: B-4052

STATE OF NORTH CAROLINA
 DIVISION OF HIGHWAYS
 PLAN FOR PROPOSED
 HIGHWAY EROSION CONTROL
CALDWELL COUNTY

LOCATION: BRIDGE NO. 7 OVER YADKIN RIVER ON NC 268

TYPE OF WORK: GRADING, DRAINAGE, PAVING & STRUCTURES



STATE	STATE PROJECT REFERENCE NO.	SHEET NO.	TOTAL SHEETS
N.C.	B-4052	EC-1	
STATE PROJ. NO.	F.A. PROJ. NO.	DESCRIPTION	

EROSION AND SEDIMENT CONTROL MEASURES

Sed. #	Description	Symbol
	Streambank Reforestation.....	
1630.03	Temporary Silt Ditch.....	
1630.05	Temporary Diversion.....	
1605.01	Temporary Silt Fence.....	
1606.01	Special Sediment Control Fence.....	
1622.01	Temporary Berms and Slope Drains.....	
1630.01	Riser Basin.....	
1630.02	Silt Basin Type B.....	
1633.01	Temporary Rock Silt Check Type-A.....	
	Temporary Rock Silt Check Type-B.....	
1634.01	Temporary Rock Sediment Dam Type-A.....	
1634.02	Temporary Rock Sediment Dam Type-B.....	
1635.01	Rock Pipe Inlet Sediment Trap Type-A.....	
1635.02	Rock Pipe Inlet Sediment Trap Type-B.....	
1630.04	Stilling Basin.....	
	Rock Inlet Sediment Trap:	
1632.01	Type A.....	
1632.02	Type B.....	
1632.03	Type C.....	
	Skimmer Basin.....	
	Tiered Skimmer Basin.....	
	Infiltration Basin.....	

THIS PROJECT CONTAINS EROSION CONTROL PLANS FOR CLEARING AND GRUBBING PHASE OF CONSTRUCTION.

ENVIRONMENTALLY SENSITIVE AREA(S) EXIST ON THIS PROJECT
 Refer To E. C. Special Provisions for Special Considerations.

THIS PROJECT HAS BEEN DESIGNED TO SENSITIVE WATERSHED STANDARDS.

GRAPHIC SCALE

0

 PLANS

0

 PROFILE (HORIZONTAL)

0

 PROFILE (VERTICAL)

ROADSIDE ENVIRONMENTAL UNIT
 DIVISION OF HIGHWAYS
 STATE OF NORTH CAROLINA

Prepared In the Office of:
ROADSIDE ENVIRONMENTAL UNIT
 1 South Wilmington St.
 Raleigh, NC 27611
2006 STANDARD SPECIFICATIONS

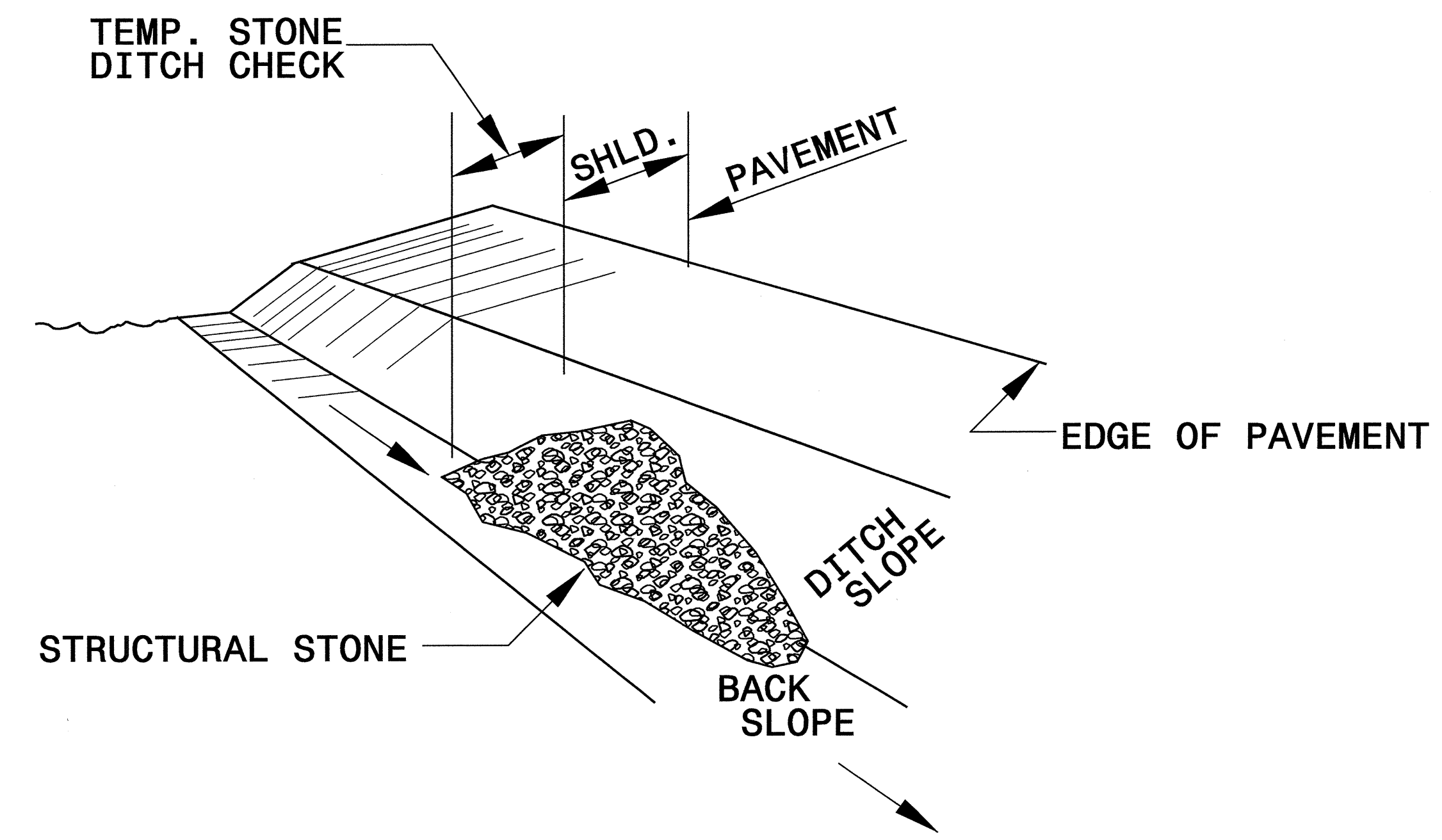
Roadway Standard Drawings

The following roadway english standards as appear in "Roadway Standard Drawings"- Roadway Design Unit - N. C. Department of Transportation - Raleigh, N. C., dated July 18, 2006 and the latest revision thereto are applicable to this project and by reference hereby are considered a part of these plans.

1605.01 Temporary Silt Fence
 1607.01 Gravel Construction Entrance
 1622.01 Temporary Berms and Slope Drains
 1630.03 Temporary Silt Ditch
 1630.05 Temporary Diversion
 1630.06 Special Stilling Basin
 1632.03 Rock Inlet Sediment Trap Type C
 1633.01 Temporary Rock Silt Check Type A
 1635.02 Rock Pipe Inlet Sediment Trap Type B

PROJECT REFERENCE NO. B-4052	SHEET NO. EC-2
RW SHEET NO.	
ROADWAY DESIGN ENGINEER	HYDRAULICS ENGINEER

TEMPORARY ROCK SILT CHECK TYPE 'B' DETAIL

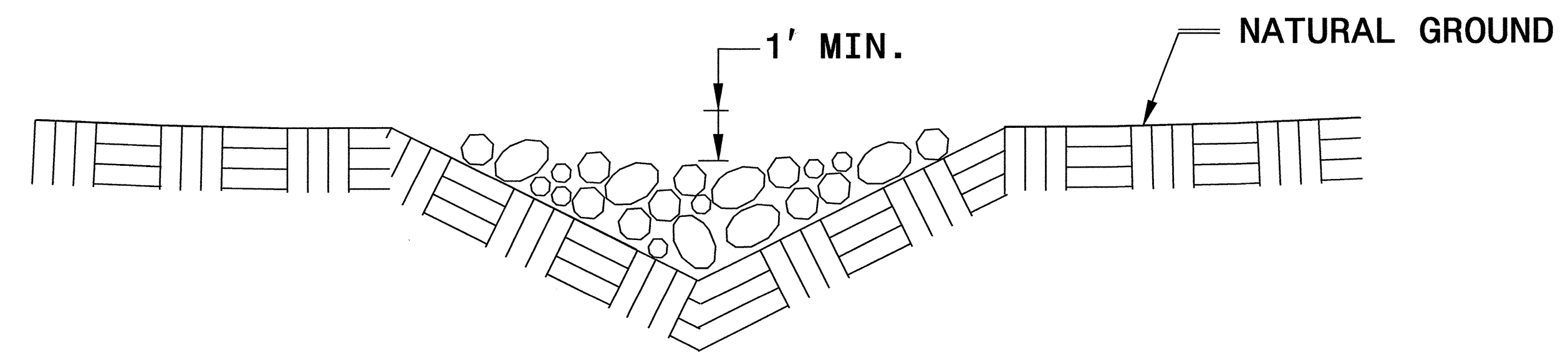


ISOMETRIC VIEW

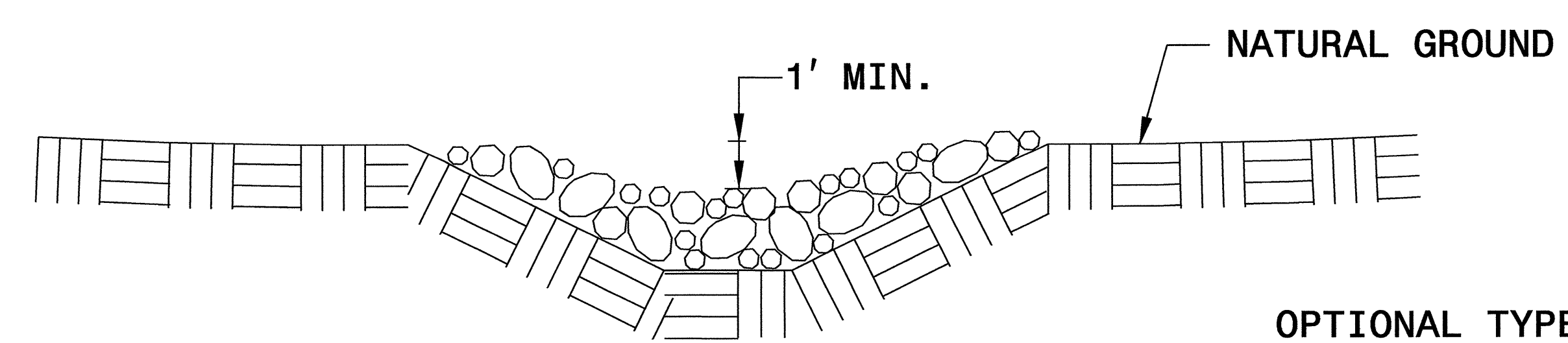
NOTES:

USE CLASS 'B' EROSION CONTROL STONE FOR STRUCTURAL STONE.

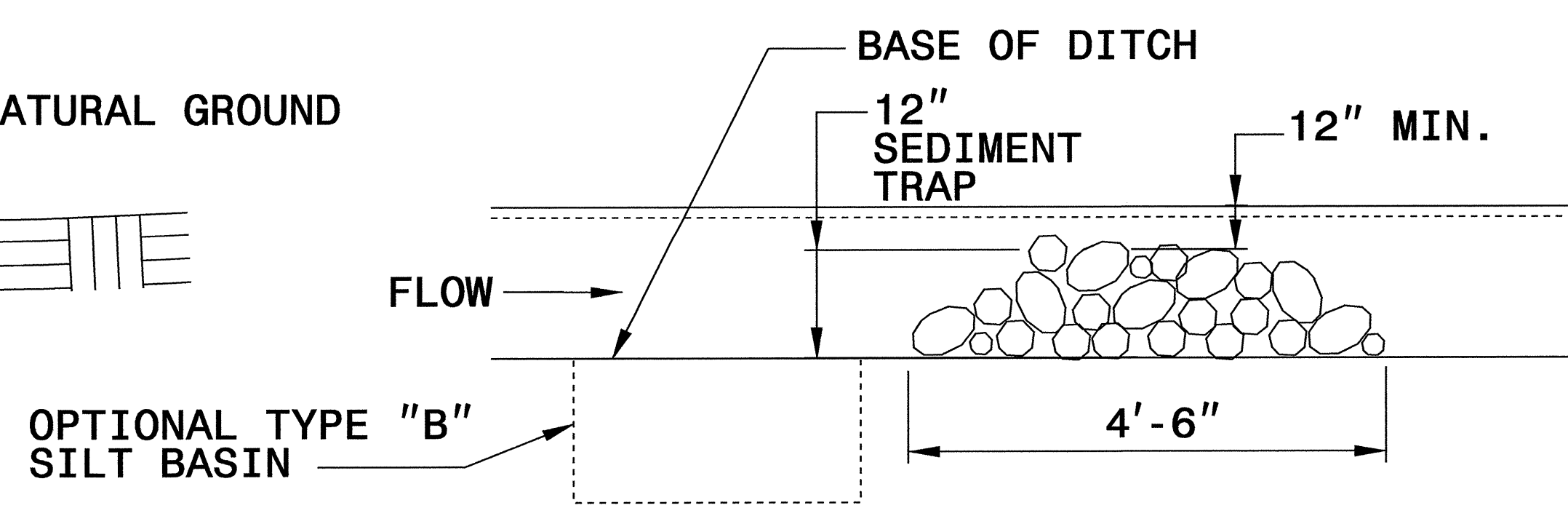
THE ENGINEER MAY DIRECT THE OPTION OF CLASS "A" STONE FOR SITES HAVING LESS THAN ONE (1) ACRE DRAINAGE AREA AND A DITCH GRADE LESS THAN 3%.



CROSS SECTION VEE DITCH



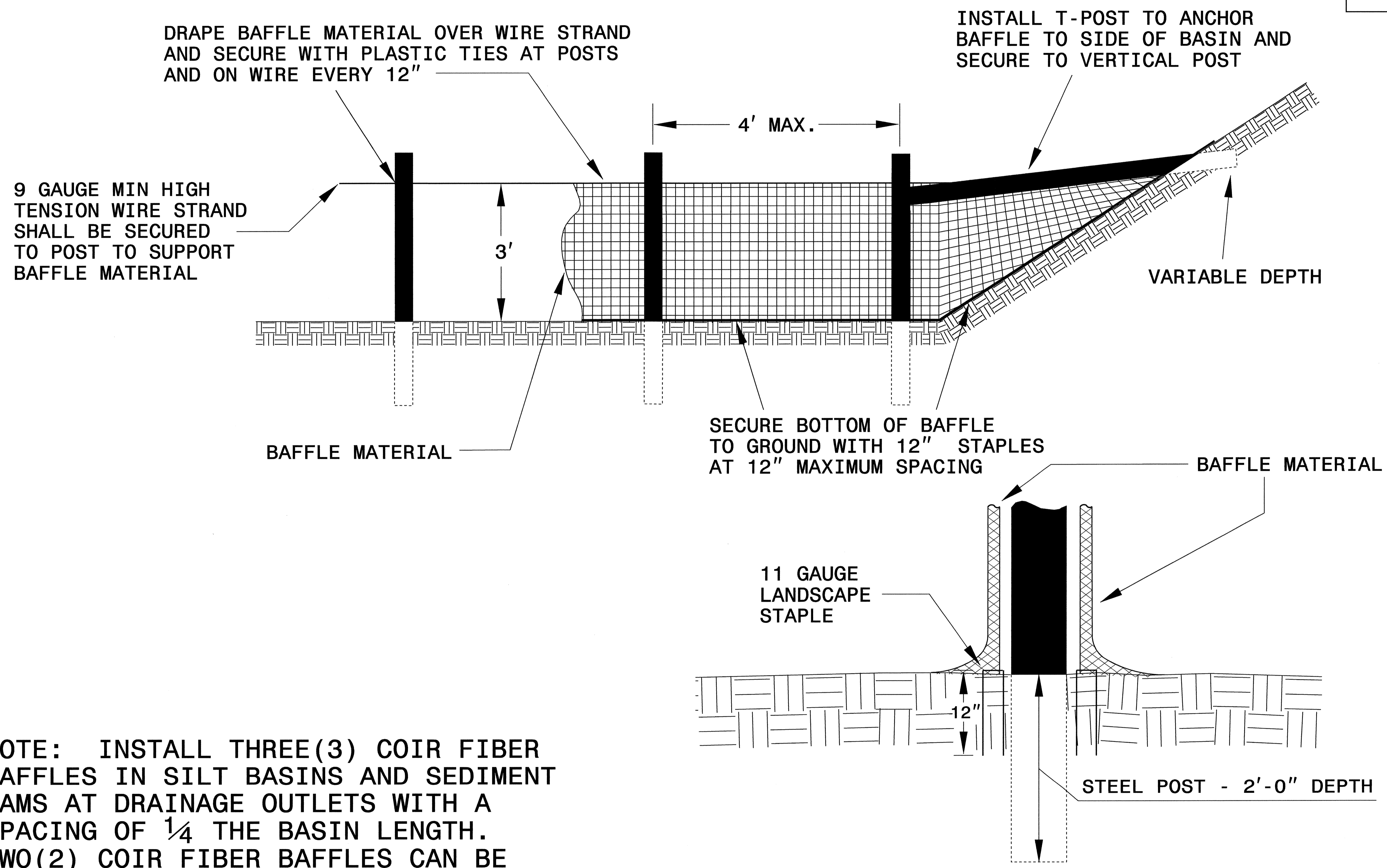
CROSS SECTION TRAPEZOIDAL DITCH



ELEVATION VIEW

PROJECT REFERENCE NO. B-4052	SHEET NO. EC-2A
RW SHEET NO.	
ROADWAY DESIGN ENGINEER	HYDRAULICS ENGINEER

COIR FIBER BAFFLE DETAIL

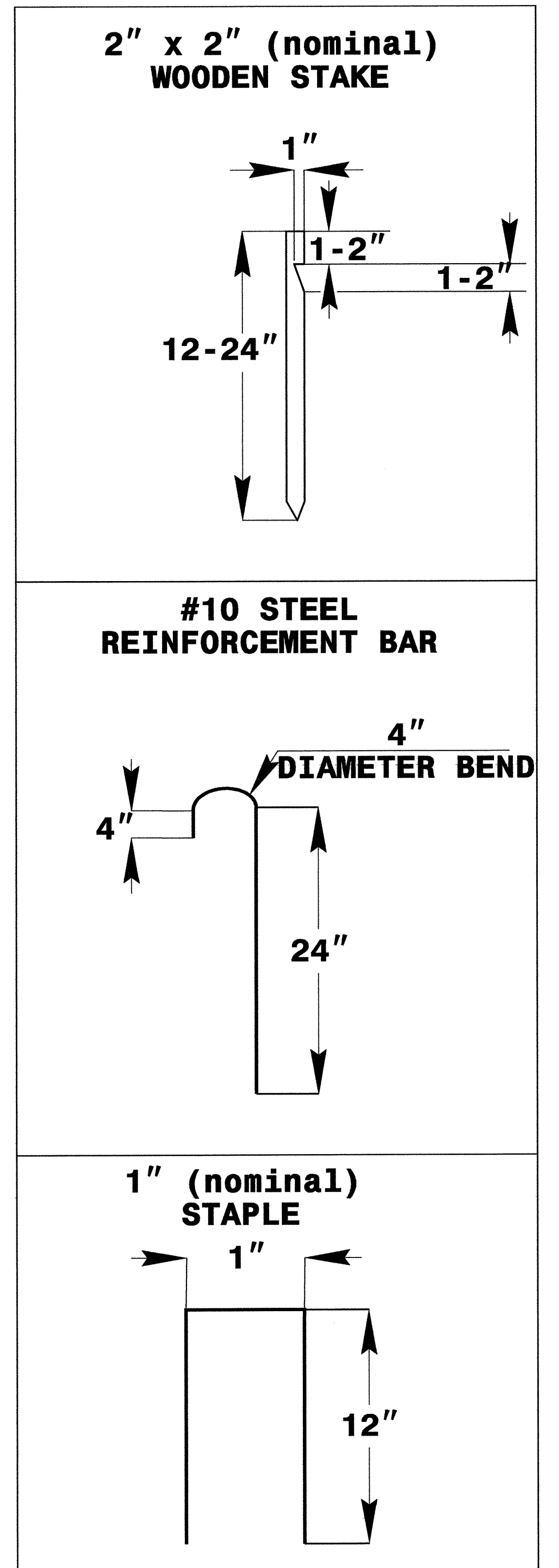
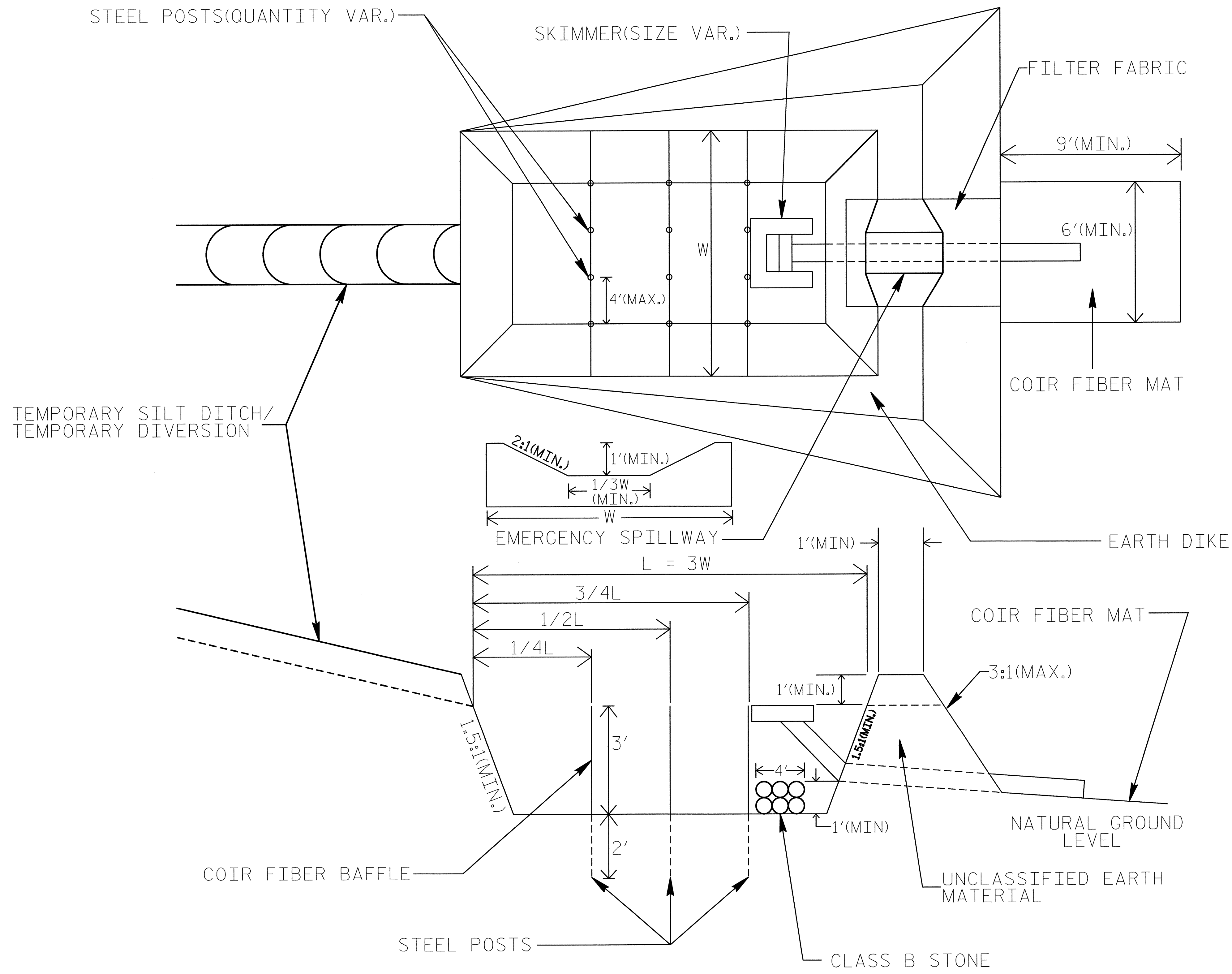


NOTE: INSTALL THREE (3) COIR FIBER BAFFLES IN SILT BASINS AND SEDIMENT DAMS AT DRAINAGE OUTLETS WITH A SPACING OF $\frac{1}{4}$ THE BASIN LENGTH. TWO (2) COIR FIBER BAFFLES CAN BE INSTALLED IN SILT BASINS AND DAMS LESS THAN 20 FT. IN LENGTH WITH A SPACING OF $\frac{1}{3}$ THE BASIN LENGTH.

BAFFLE MATERIAL SHALL BE SECURED TO THE BOTTOM AND SIDES OF BASIN USING 12" LANDSCAPE STAPLES

SKIMMER BASIN WITH BAFFLES DETAIL

PROJECT REFERENCE NO. B-4052	SHEET NO. EC-2B
RW SHEET NO.	
ROADWAY DESIGN ENGINEER	HYDRAULICS ENGINEER



**COIR FIBER MAT
ANCHOR OPTIONS**

- NOTES:**
1. SEED AND PLACE MATTING FOR EROSION CONTROL ON SIDESLOPES.
 2. LIMIT EARTH DIKE HEIGHT TO 5 FT.

NOTE:
UTILIZE SPECIAL STILLING BASIN OR SKIMMER BASIN AS STILLING BASIN WHERE APPLICABLE.

 ENVIRONMENTALLY SENSITIVE AREA
SEE PROJECT SPECIAL PROVISIONS

NOTE:
PLACE TEMPORARY ROCK SEDIMENT DAMS TYPE - B AND TEMPORARY ROCK SILT CHECKS TYPE - A AT DRAINAGE OUTLETS.

CLEARING AND GRUBBING EROSION CONTROL FOR CONSTRUCTION SHEET 04

-Y- POT Sta. 10+00.00

37 x 9 x 3
1.5 inch Skimmer
with 0.875 inch
Orifice Diameter
4 ft. weir
ID 4.2

BEGIN CONST.
-Y- Sta. 12+00.00

-Y- POT Sta. 10+00.00

-Y- PCSta. 10+36.48

-Y- POT Sta. 11+07.92

-Y- PCSta. 13+89.73

-Y- POT Sta. 14+09.95

-Y- POT Sta. 14+11.25

-Y- PCSta. 16+61.8

-Y- POT Sta. 15+11.37

-Y- PCSta. 17+41.58

-Y- PCSta. 17+57.9

-Y- POT Sta. 13+27.83

-Y- POT Sta. 11+37.24

-Y- PCSta. 14+95.95

-Y- POT Sta. 14+11.25

-Y- PCSta. 14+95.95

-Y- POT Sta. 17+47.71

-Y- PCSta. 14+95.95

-Y- POT Sta. 13+27.83

-Y- POT Sta. 11+37.24

-Y- PCSta. 14+95.95

-Y- POT Sta. 17+47.71

-Y- PCSta. 14+95.95

-Y- POT Sta. 13+27.83

-Y- POT Sta. 11+37.24

-Y- PCSta. 14+95.95

-Y- POT Sta. 17+47.71

-Y- PCSta. 14+95.95

-Y- POT Sta. 13+27.83

-Y- POT Sta. 11+37.24

-Y- PCSta. 14+95.95

-Y- POT Sta. 17+47.71

-Y- PCSta. 14+95.95

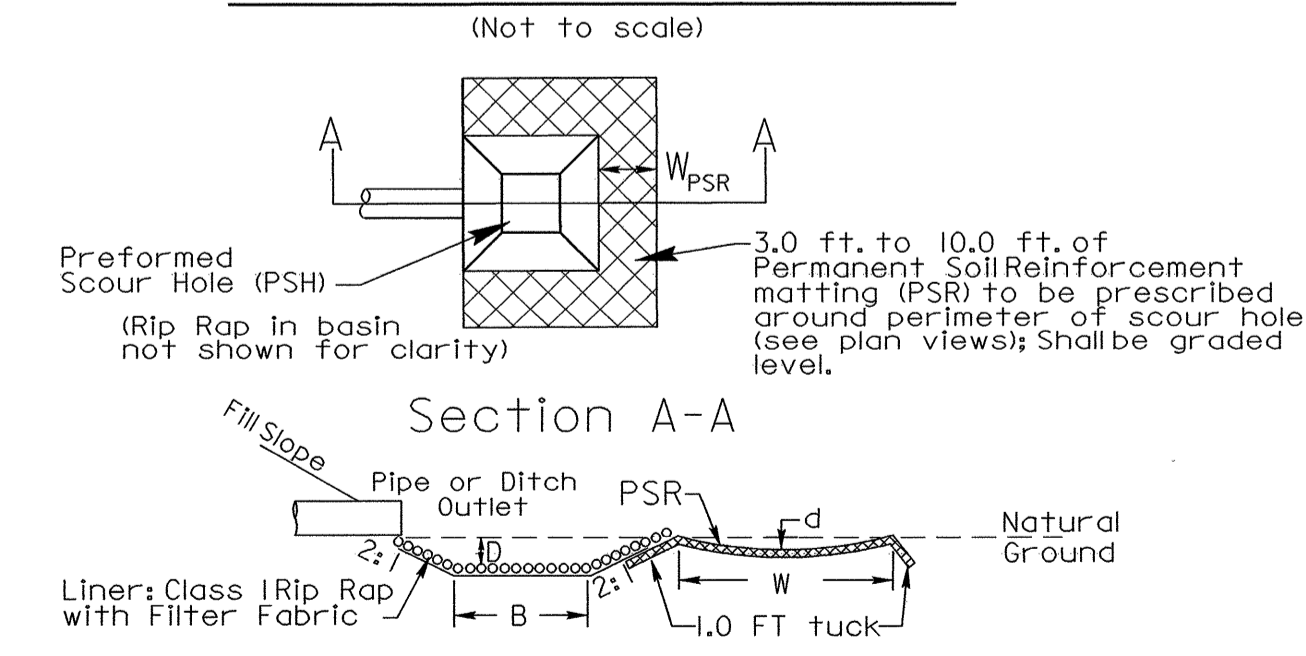
-Y- POT Sta. 13+27.83

-Y- POT Sta. 11+37.24

-Y- PCSta. 14+95.95

28 x 7 x 3
1.5 inch Skimmer
with 0.75 inch
Orifice Diameter
4 ft. weir
ID 4.1

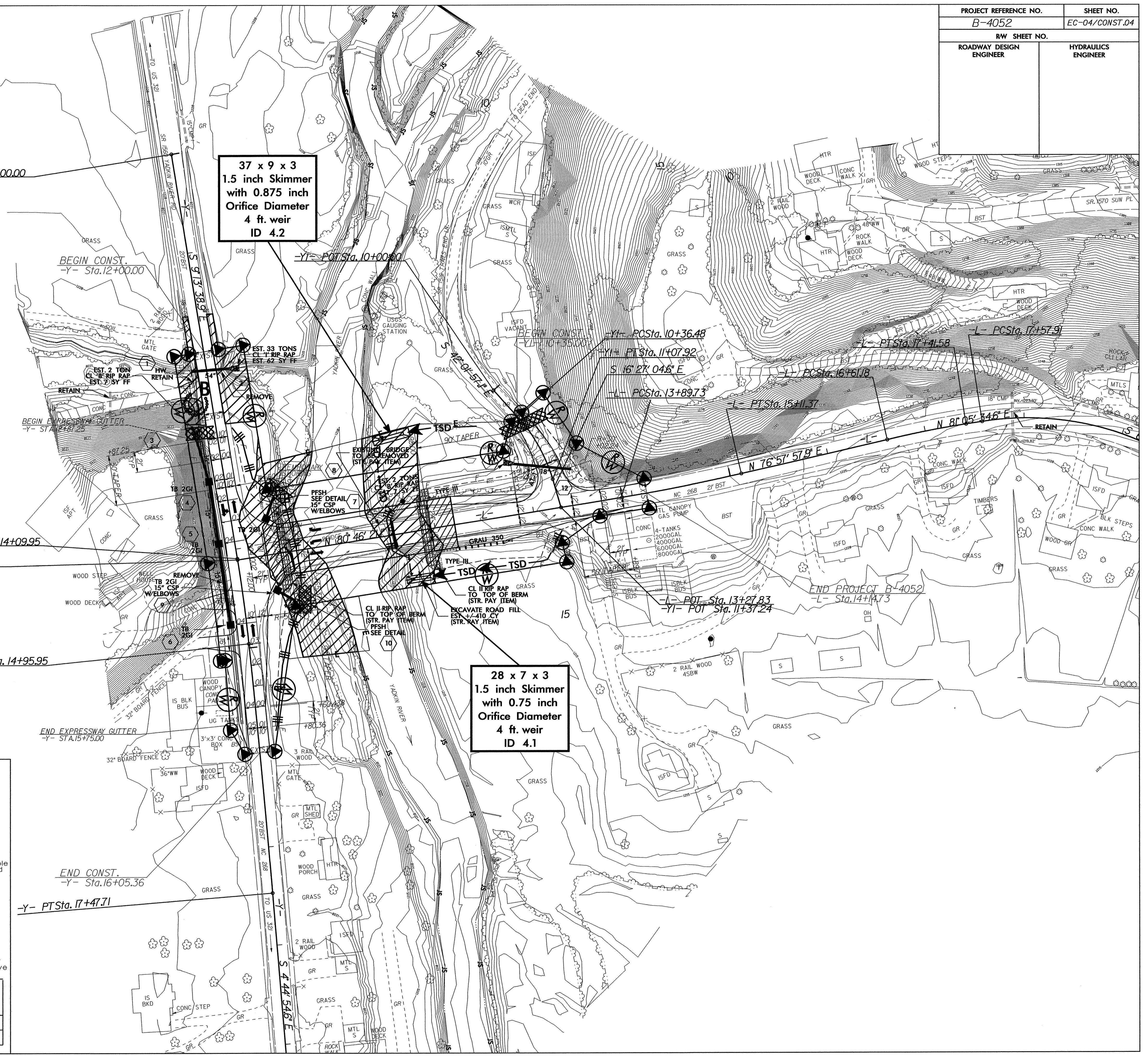
PREFORMED SCOUR HOLE



NOTE: 'B' denotes size of basin; For example: 5.0ft.x 5.0ft. PSH, B=5.0

NOTE: The Permanent Soil Reinforcement matting (PSR) shall be seeded with native grasses at installation.

STATION	B FT.	D FT.	W _{PSR} FT.	d FT.	CLASS I RIP RAP TONS	DDE (CU YD)	FILTER FABRIC (SQ YD)
A+ 15" Pipes	4	1.5	5	0.5	9	15	13



NOTE:
UTILIZE SPECIAL STILLING BASIN OR SKIMMER
BASIN AS STILLING BASIN WHERE APPLICABLE.

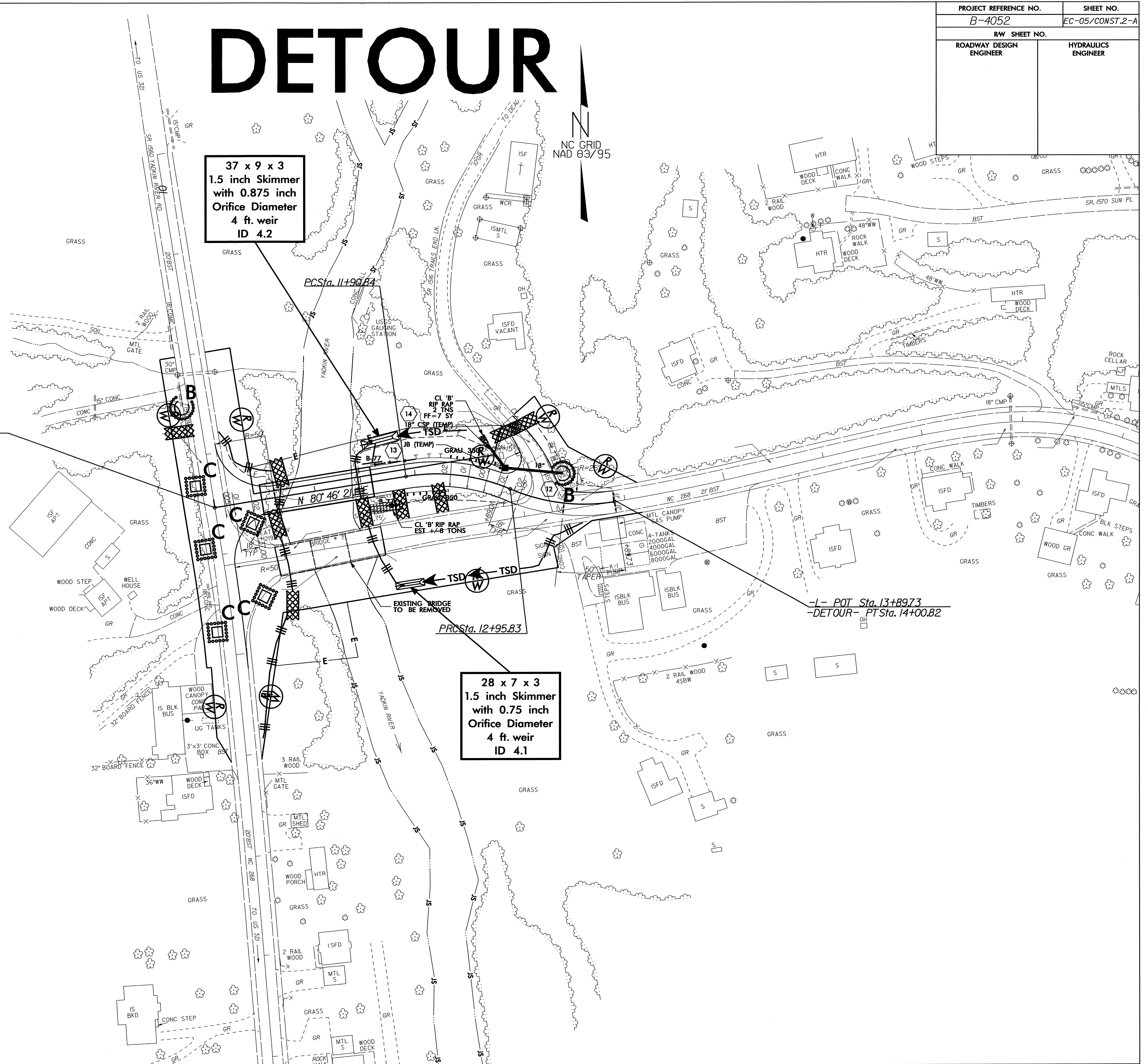
DETOUR

PROJECT REFERENCE NO. B-4052	SHEET NO. EC-05/CONST.2-A
RW SHEET NO.	
ROADWAY DESIGN ENGINEER	HYDRAULICS ENGINEER

-DETOUR- POT Sta. 10+00.00
-Y- POT Sta. 13+53.25

37 x 9 x 3
1.5 inch Skimmer
with 0.875 inch
Orifice Diameter
4 ft. weir
ID 4.2

28 x 7 x 3
1.5 inch Skimmer
with 0.75 inch
Orifice Diameter
4 ft. weir
ID 4.1



NC GRID
NAD 83/95

PCSta. 11+99.84

PRCSta. 12+95.83

-I- POT Sta. 13+89.73
-DETOUR- PT Sta. 14+00.82

N 80° 46' 21" E

TO US 321
TO SR 1516 YADKIN RIVER RD

TO SR 268
TO SR 1516 YADKIN RIVER RD

SR 1570 SUNN PL

NC 268 21' BST

2 RAIL WOOD 45BW

TO SR 1516 YADKIN RIVER RD

TO SR 268
TO SR 1516 YADKIN RIVER RD

SR 1570 SUNN PL

NC 268 21' BST

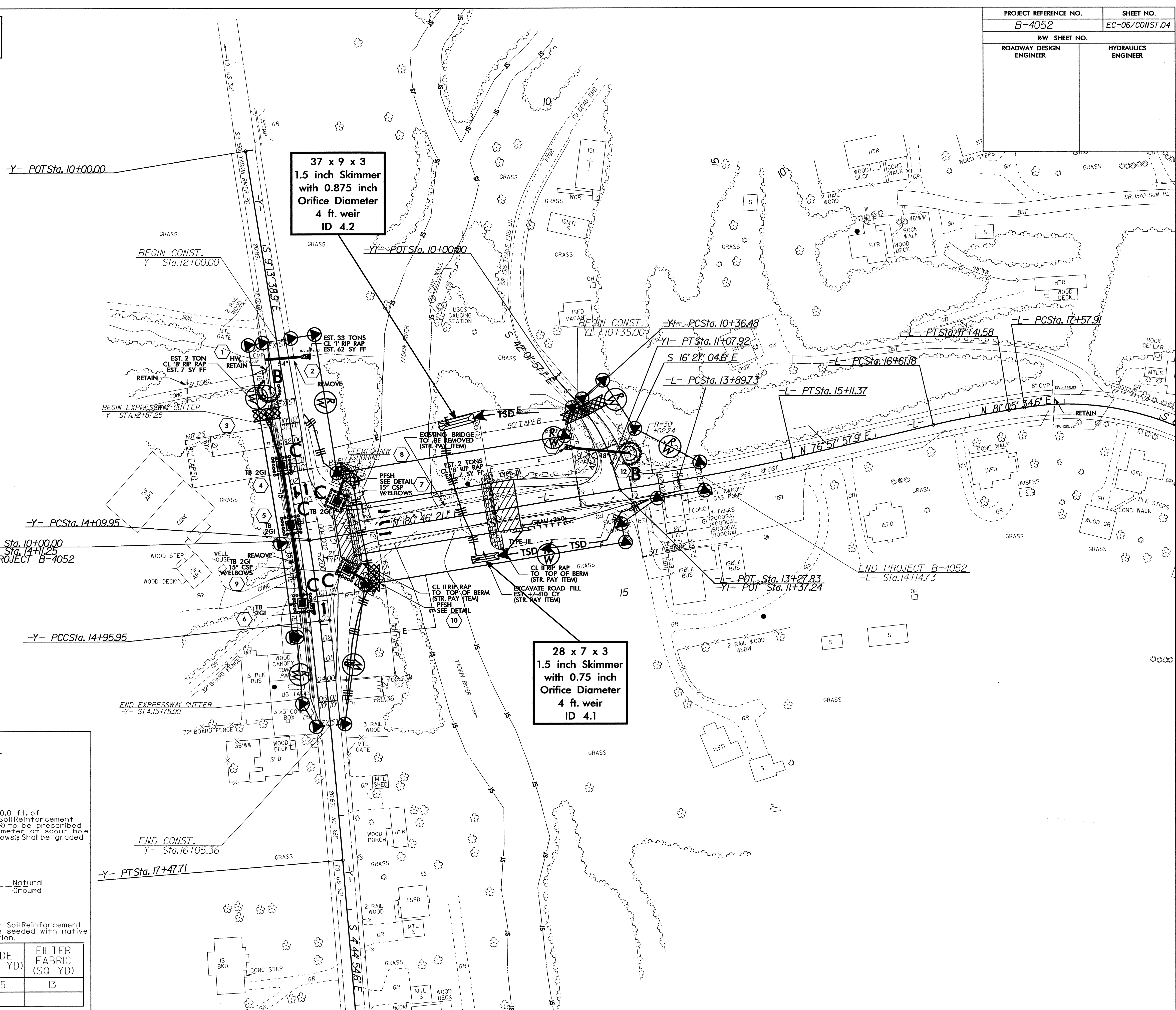
2 RAIL WOOD 45BW

TO SR 1516 YADKIN RIVER RD

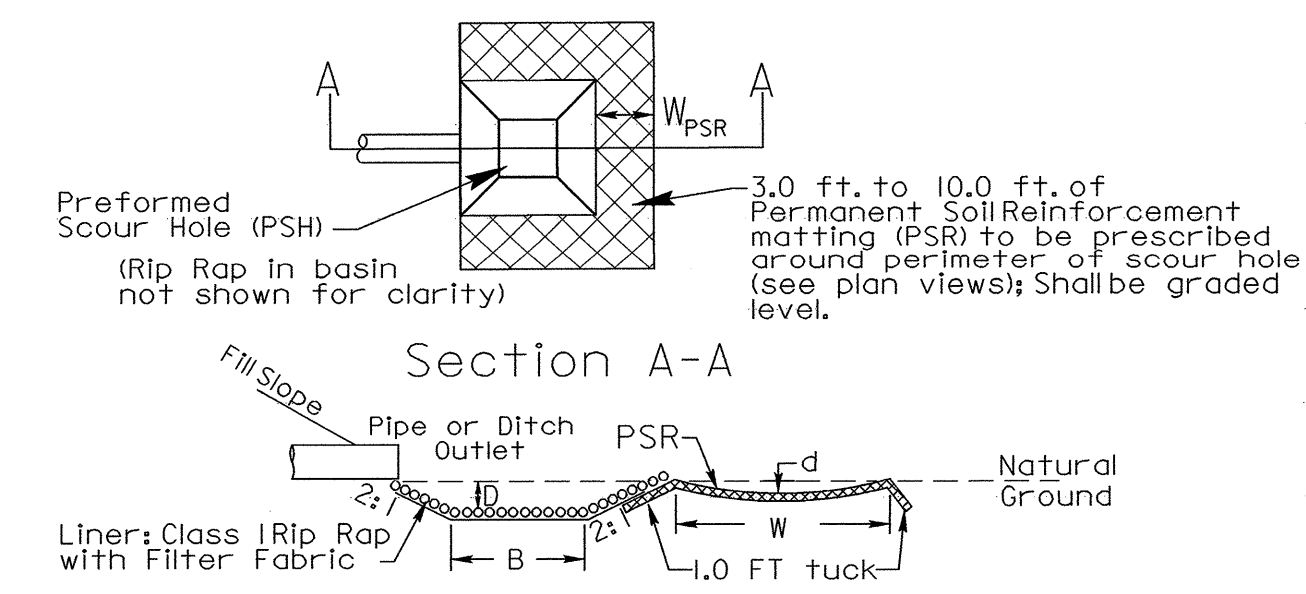
TO SR 268
TO SR 1516 YADKIN RIVER RD

SR 1570 SUNN PL

NOTE:
UTILIZE SPECIAL STILLING BASIN OR SKIMMER
BASIN AS STILLING BASIN WHERE APPLICABLE.



PREFORMED SCOUR HOLE
(Not to scale)



NOTE: *B* denotes size of basin;
For example: 5.0ft. x 5.0ft. PSR, B=5.0

NOTE: The Permanent Soil Reinforcement matting (PSR) shall be seeded with native grasses at installation.

STATION	B FT.	D FT.	W _{PSR} FT.	d FT.	CLASS I RIP RAP TONS	DDE (CU YD)	FILTER FABRIC (SQ YD)
A+ 15" Pipes	4	1.5	5	0.5	9	15	13