

STATE OF NORTH CAROLINA
DIVISION OF HIGHWAYS

STATE PROJECT REFERENCE NO.	SHEET NO.
B-3803	TCP-1

**PLAN FOR PROPOSED
TRAFFIC CONTROL, MARKING & DELINEATION
ASHE COUNTY**

B-3803

ROADWAY STANDARD DRAWINGS

THE FOLLOWING ROADWAY STANDARDS AS APPEAR IN "ROADWAY STANDARD DRAWINGS"- PROJECT SERVICES UNIT-N.C. DEPARTMENT OF TRANSPORTATION-RALEIGH, N.C., DATED JULY 2006 ARE APPLICABLE TO THIS PROJECT AND BY REFERENCE HEREBY ARE CONSIDERED A PART OF THESE PLANS:

STD. NO.	TITLE
1101.03	TEMPORARY ROAD CLOSURES
1101.11	TRAFFIC CONTROL DESIGN TABLES
1110.01	STATIONARY WORK ZONE SIGNS
1130.01	DRUM
1135.01	CONES
1145.01	BARRICADES
1205.01	PAVEMENT MARKINGS - LINE TYPES & OFFSETS
1205.02	PAVEMENT MARKINGS - 2 LANE & MULTILANE ROADWAYS
1205.12	PAVEMENT MARKINGS - BRIDGES

INDEX OF SHEETS

SHEET NO.	TITLE
TCP-1	LIST OF APPLICABLE ROADWAY STANDARD DRAWINGS, LEGEND, INDEX OF SHEETS AND FINAL PAVEMENT MARKING SCHEDULE
TCP-2	PROJECT NOTES AND PHASING
TCP-3	DETOUR ROUTE AND BARRICADE PLACEMENT
SD-1	SPECIAL SIGN DESIGN

LEGEND

- GENERAL**
- DIRECTION OF TRAFFIC FLOW
 - NORTH ARROW
 - PROPOSED PVMT. EXIST. PVMT.
 - WORK AREA
 - REMOVAL OF EXISTING PAVEMENT

TRAFFIC CONTROL DEVICES

- TYPE I BARRICADE
- TYPE II BARRICADE
- TYPE III BARRICADE
- CONE
- DRUM SKINNY DRUM
- FLASHING ARROW PANEL (TYPE C)
- STATIONARY SIGN
- PORTABLE SIGN
- STATIONARY OR PORTABLE SIGN
- CRASH CUSHION
- CHANGEABLE MESSAGE SIGN
- TRUCK MOUNTED IMPACT ATTENUATOR (TMIA)
- POLICE
- FLAGGER

PAVEMENT MARKINGS

- CRYSTAL/CRYSTAL PAVEMENT MARKER
- YELLOW/YELLOW PAVEMENT MARKER
- CRYSTAL/RED PAVEMENT MARKER
- PAVEMENT MARKING SYMBOLS

FINAL PAVEMENT MARKING SCHEDULE

SYMBOL	DESCRIPTION	PAY ITEM QUANTITY BREAKDOWN		TOTAL QUANTITY
		FINAL PAVEMENT MARKINGS		
VA	WHITE EDGELINE	POLYUREA (4") Standard Glass Beads	2920 LF	
VI	YELLOW DOUBLE CENTER		2920 LF	
		TOTAL		5840 LF

APPROVED: _____ DATE: _____	PLAN PREPARED BY: N.C.D.O.T. WORK ZONE TRAFFIC CONTROL UNIT
	J. S. BOURNE, PE TRAFFIC CONTROL ENGINEER
	J. ISHAK, PE TRAFFIC CONTROL PROJECT ENGINEER
	J. L. PORTANOVA, PE TRAFFIC CONTROL PROJECT DESIGN ENGINEER
	E. K. GROUNDWATER TRAFFIC CONTROL DESIGN ENGINEER

28-JAN-2008 08:35
K:\dot\office\010\p\c\1\tipproj\sets-b\3803\traffic\trafficcontrol\tcp\b-3803.tapl.dgn
ekggroundwater AT 12/22/06

TIP PROJECT:

PROJECT NOTES

CHANGES MAY BE REQUIRED WHEN PHYSICAL DIMENSIONS IN THE DETAIL DRAWINGS, STANDARD DETAILS AND ROADWAY DETAILS ARE NOT ATTAINABLE TO MEET FIELD CONDITIONS, OR RESULT IN DUPLICATE, OR UNDESIRED OVERLAPPING OF DEVICES. MODIFICATION MAY INCLUDE: MOVING, SUPPLEMENTING, COVERING OR REMOVAL OF DEVICES, AS DIRECTED BY THE ENGINEER.

THE FOLLOWING GENERAL NOTES APPLY AT ALL TIMES FOR THE DURATION OF THE CONSTRUCTION PROJECT, EXCEPT WHEN OTHERWISE NOTED IN THE PLAN, OR DIRECTED BY THE ENGINEER.

TRAFFIC PATTERN ALTERATIONS

- A) NOTIFY THE ENGINEER TWENTY ONE (21) CALENDAR DAYS PRIOR TO ANY TRAFFIC PATTERN ALTERATION.

SIGNING

- B) PROVIDE PERMANENT SIGNING.
 C) PROVIDE DETOUR SIGNING WITHIN AND OFF THE PROJECT LIMITS.
 D) COVER OR REMOVE ALL DETOUR SIGNS WITHIN AND OFF THE PROJECT LIMITS WHEN A DETOUR IS NOT IN OPERATION.
 E) ENSURE ALL NECESSARY SIGNING IS IN PLACE PRIOR TO ALTERING ANY TRAFFIC PATTERN.

TRAFFIC CONTROL DEVICES

- F) PLACE TYPE III BARRICADES WITH "ROAD CLOSED" SIGN R11-2 ATTACHED OF SUFFICIENT LENGTH TO CLOSE THE ENTIRE ROADWAY.

PAVEMENT MARKINGS AND MARKERS

- G) INSTALL PAVEMENT MARKINGS AND PAVEMENT MARKERS ON THE FINAL SURFACE AS FOLLOWS:

ROAD NAME	MARKING	MARKER
SR 1169 (CONLEY CHEEK RD)	POLYUREA	N/A

- H) TIE PROPOSED PAVEMENT MARKING LINES TO EXISTING PAVEMENT MARKING LINES.

PHASING

MAINTAIN ACCESS TO ALL DRIVEWAYS AT ALL TIMES DURING CONSTRUCTION USING INCIDENTAL STONE OR AS DIRECTED BY THE ENGINEER.

STEP 1: USING RSD 1101.03 SHEET 1 OF 9 AND SHEET TCP-3, INSTALL DETOUR SIGNS, INCLUDING THE WARNING SIGNS ALONG THE SOUTH FORK NEW RIVER AS REQUESTED BY THE NATIONAL COMMITTEE OF NEW RIVER, AND PLACE TYPE III BARRICADES TO CLOSE SR 1169 (CONLEY CHEEK RD.) TO THRU TRAFFIC AND DETOUR TRAFFIC ONTO PROPOSED DETOUR.

STEP 2: AWAY FROM TRAFFIC PERFORM THE FOLLOWING: (SEE ROADWAY PLANS)

- 1) -REMOVE EXISTING STRUCTURE NO. 334 AND CONSTRUCT PROPOSED STRUCTURE.

-CONSTRUCT PROPOSED -L- AND DRIVEWAYS UP TO AND INCLUDING THE FINAL LAYER OF SURFACE COURSE FROM -L- STA. 10+50 +/- TO -L- STA. 23+75 +/-.

- 2) PLACE FINAL PAVEMENT MARKINGS (POLYUREA) ON PROPOSED -L- (CONLEY CHEEK RD.) AND TIE INTO EXISTING MARKINGS.

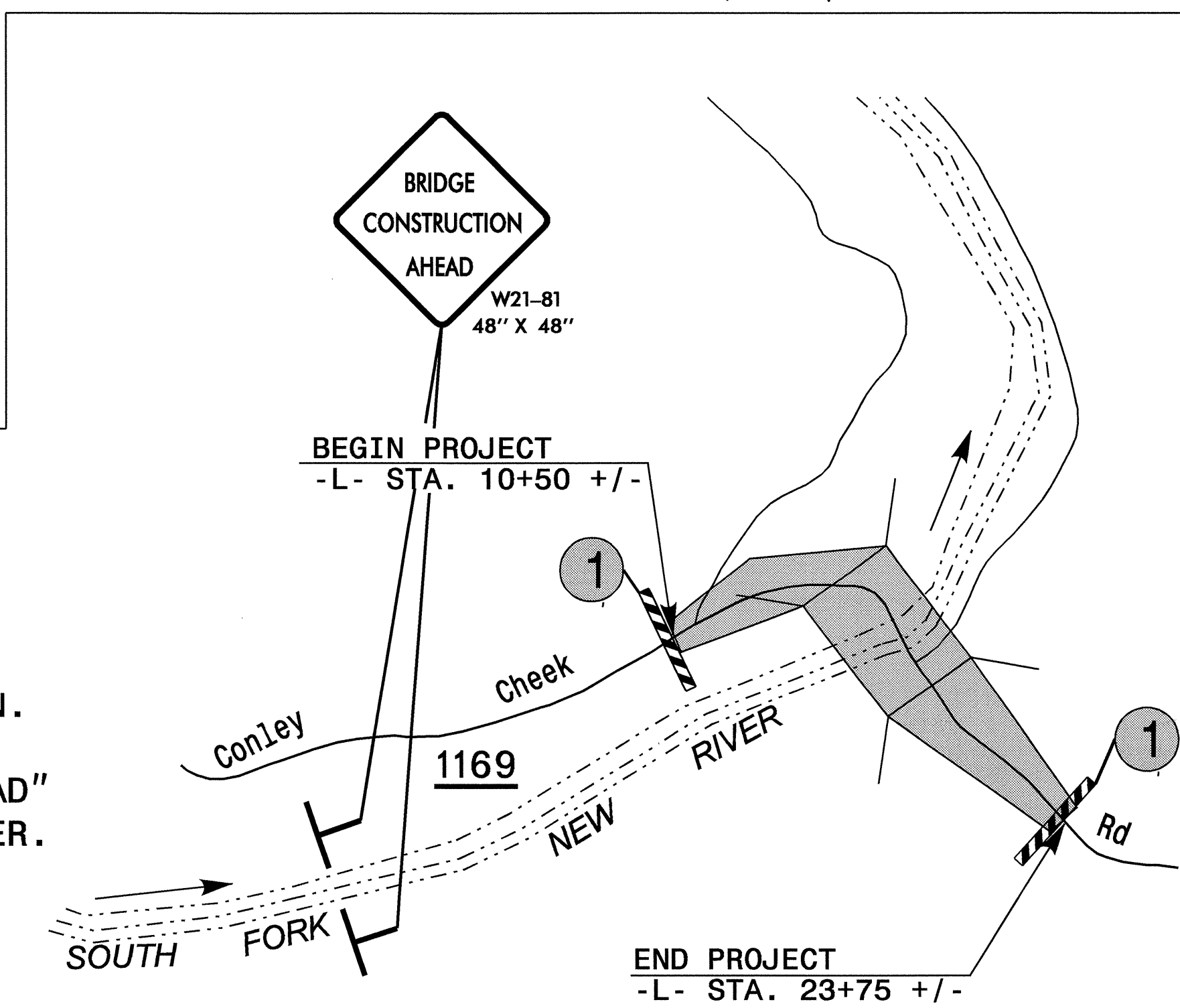
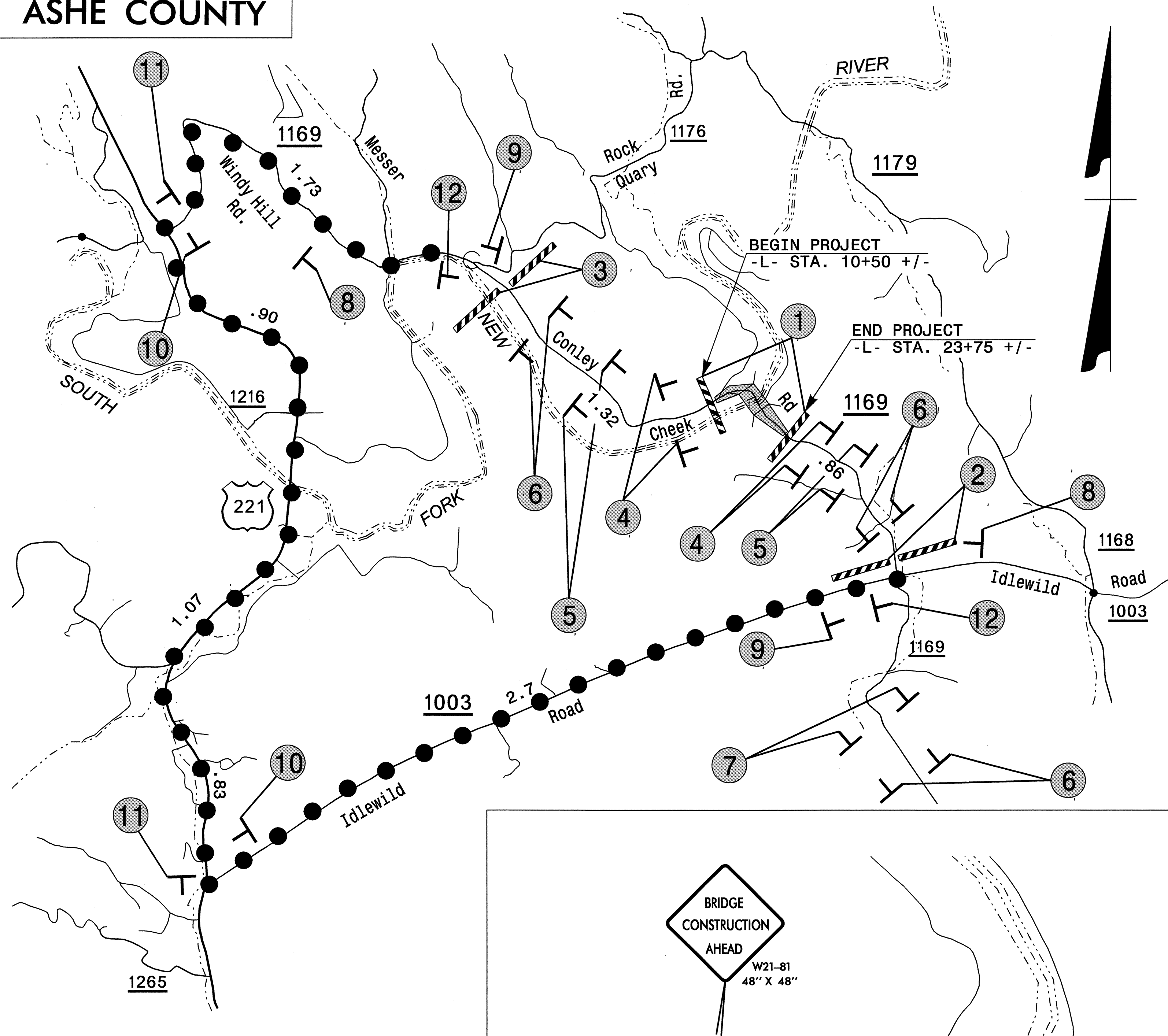
STEP 3: REMOVE ALL TRAFFIC CONTROL DEVICES AND DETOUR SIGNING. OPEN SR 1169 (CONLEY CHEEK RD.) TO TWO-LANE, TWO-WAY TRAFFIC PATTERN.

28-JAN-2008 08:36 \\dot\dfsroot\Proj\TIP\Projects-B\B3803\TrafficControl\TCP\B-3803.TCP2.dgn
ekg\groundwater AT WZTC22464

APPROVED: _____ DATE: _____	PROJECT NOTES AND PHASING	
	SCALE: NONE	
	DATE: 01/08	
	DWG. BY: EKG	
	DESIGN BY: EKG	
REVIEWED BY: JLP	REVISIONS	

ASHE COUNTY

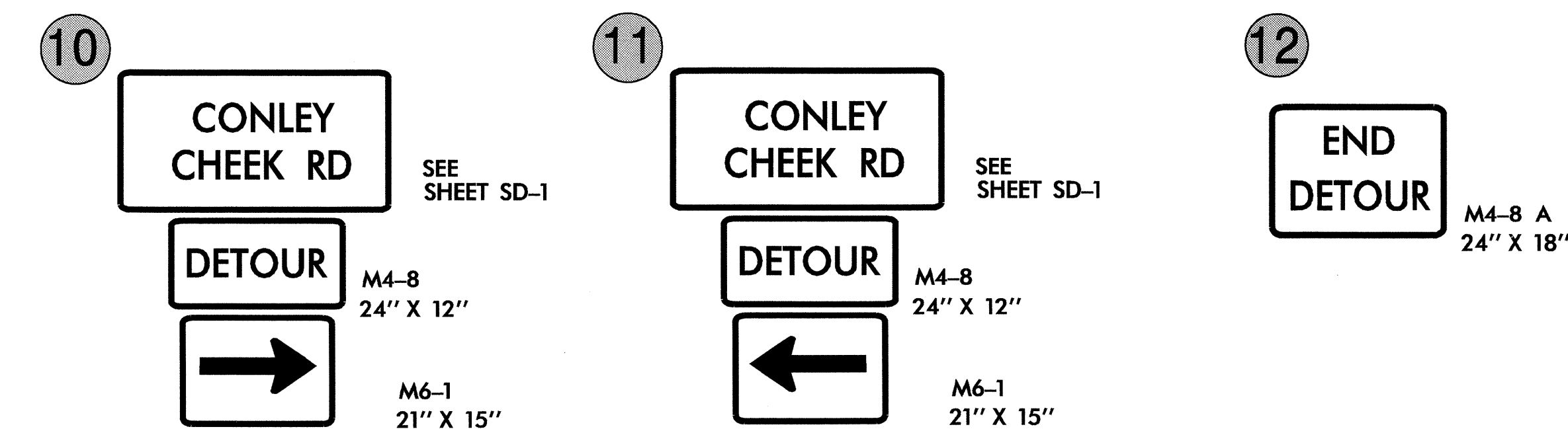
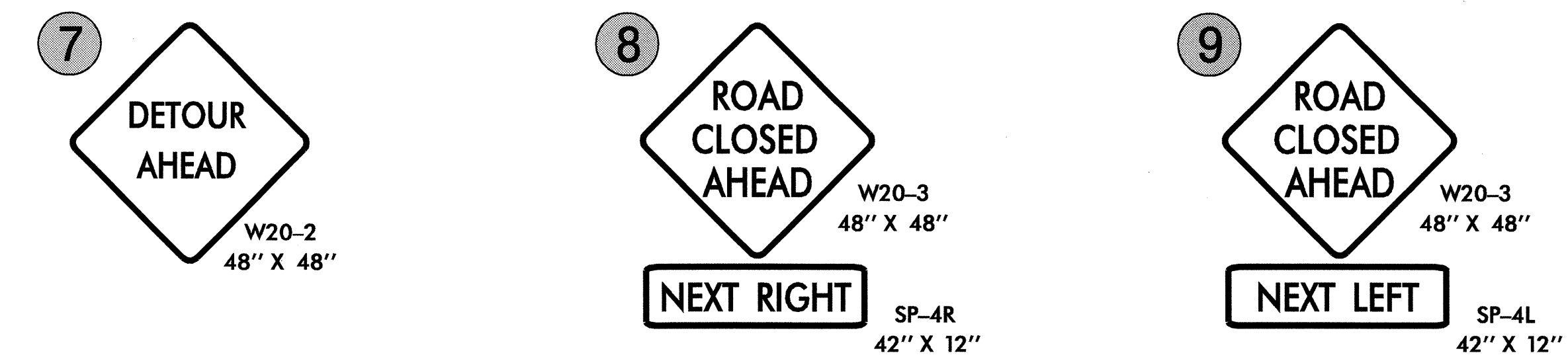
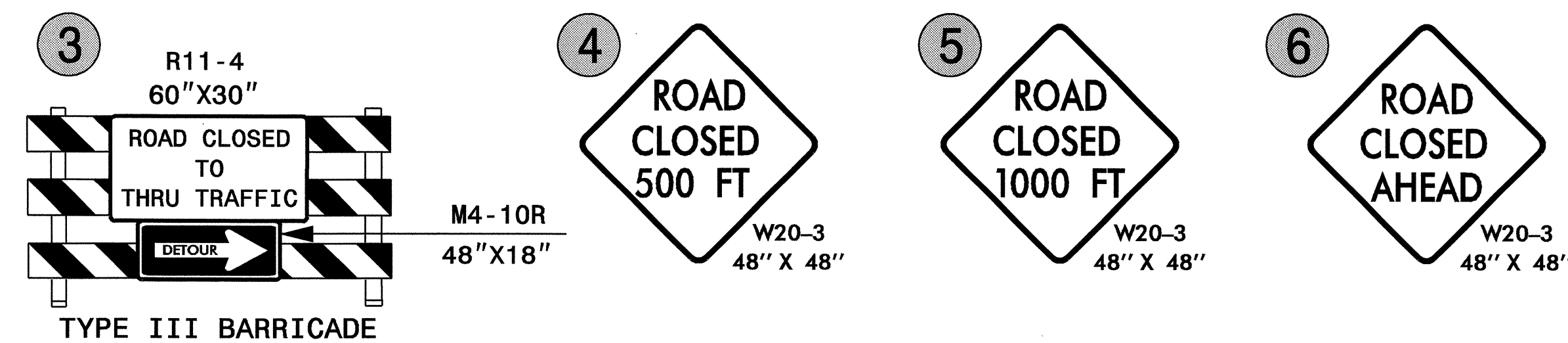
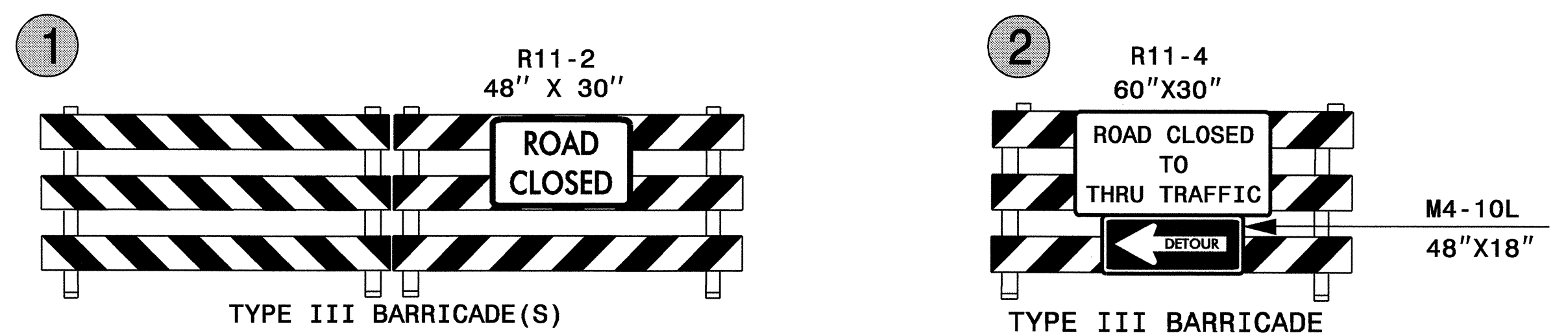
PROJ. REFERENCE NO. B-3803	SHEET NO. TCP-3
-------------------------------	--------------------



NOTES:

1. REFER TO RSD 1101.03, SHEET 1 OF 9 FOR SIGN SPACING DISTANCES.
2. SEE SHEET SD-1 FOR DETOUR SIGN DESIGN.
3. LOCATION OF "BRIDGE CONSTRUCTION AHEAD" SIGNS TO BE DETERMINED BY THE ENGINEER.

OFF-SITE DETOUR ROUTE ● — ● — ●



APPROVED: _____ DATE: _____

 1/28/08

DETOUR ROUTE AND BARRICADE PLACEMENT		REVISIONS	
SCALE: NONE	DATE: 01/08		
DWG. BY: EKG	DESIGN BY: EKG		
REVIEWED BY: JLP			

05-FEB-2008 12:47
 \\dotserver\projects\B3803\TrafficControl\tcp\B-3803_tcp3.dgn
 ekgroundwater AT 12/22/04