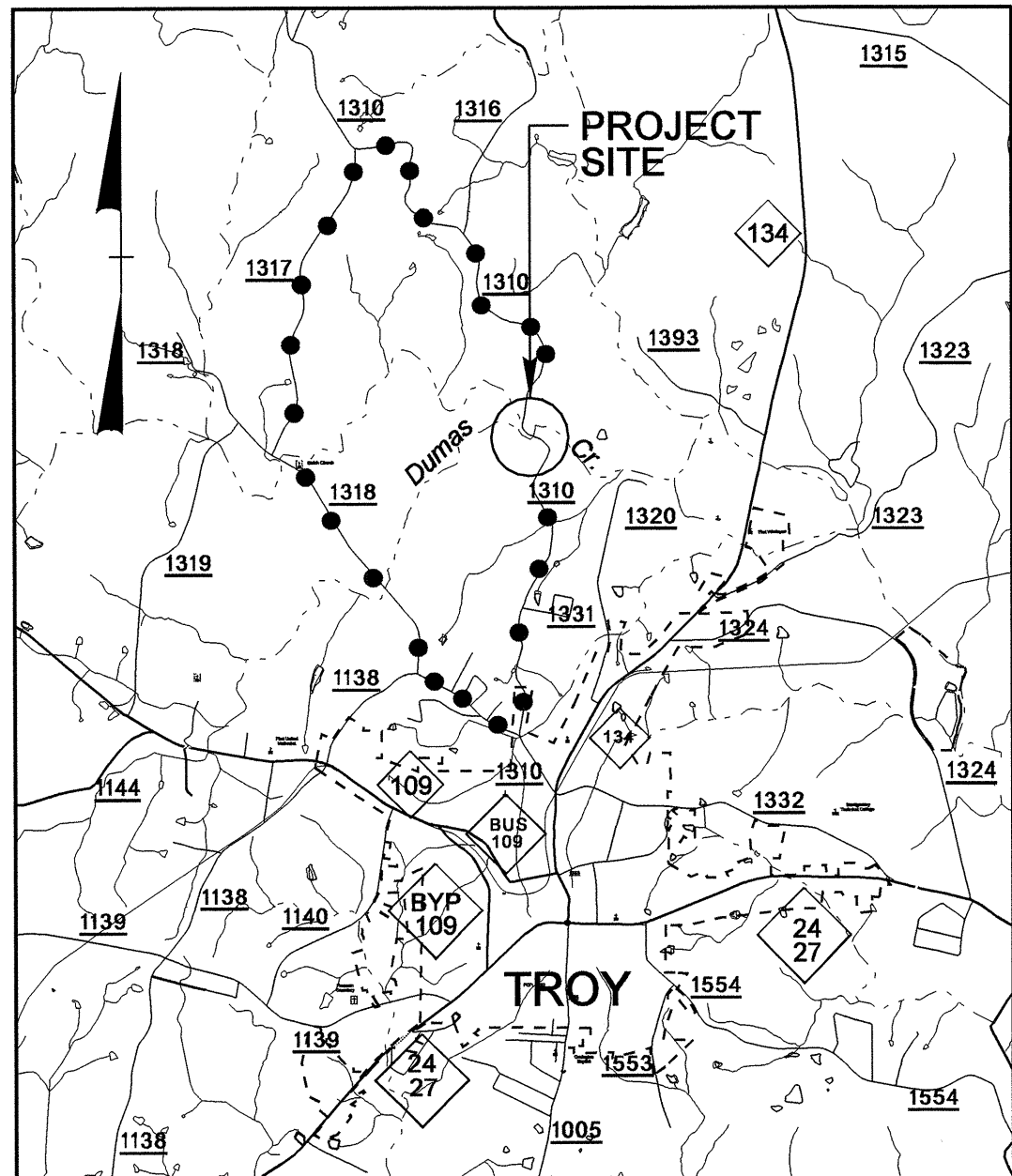


See Sheet 1-A For Index of Sheets



VICINITY MAP

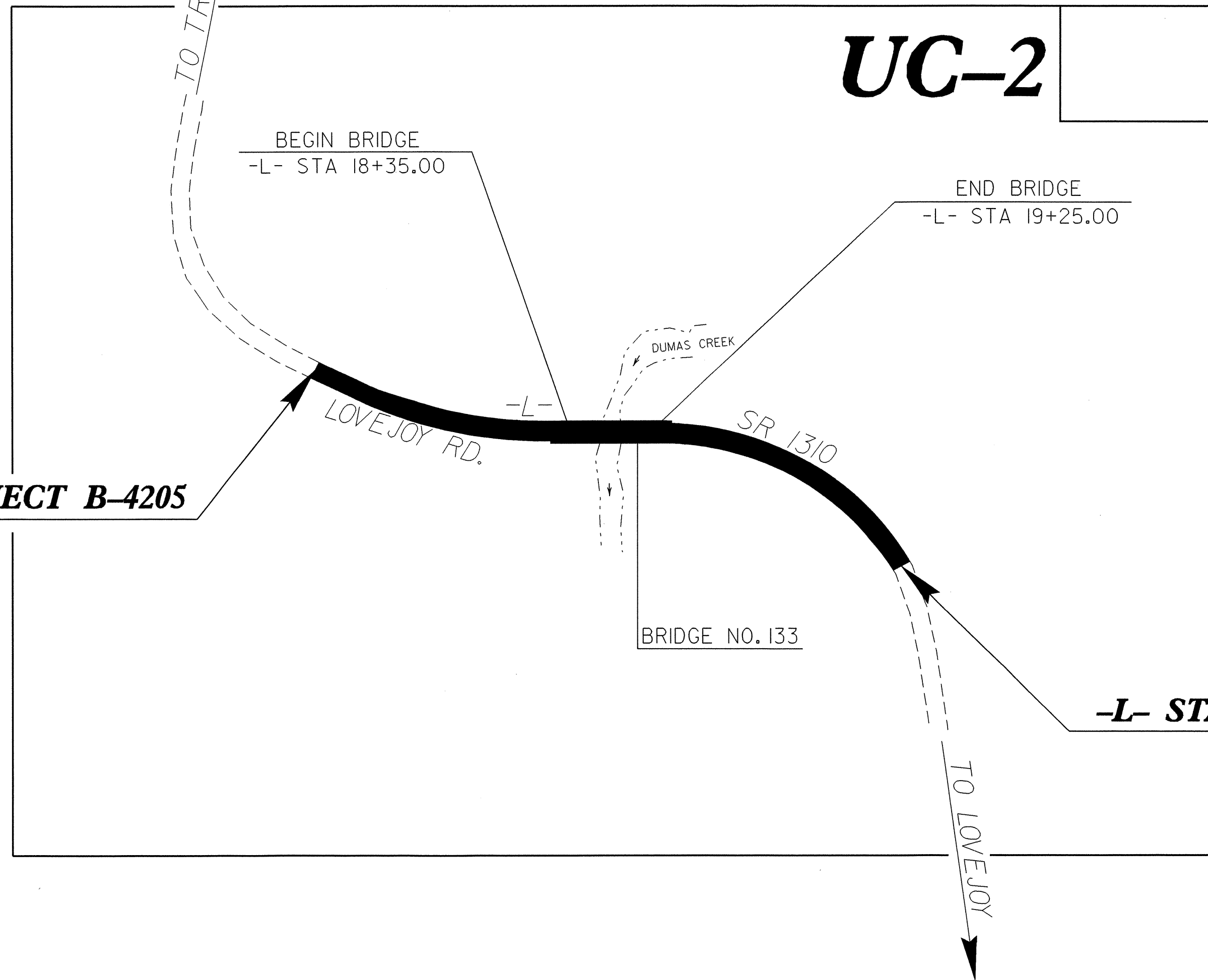
---●---●---●---● DETOUR ROUTE

STATE OF NORTH CAROLINA
DIVISION OF HIGHWAYS

**UTILITY CONSTRUCTION PLANS
MONTGOMERY COUNTY**

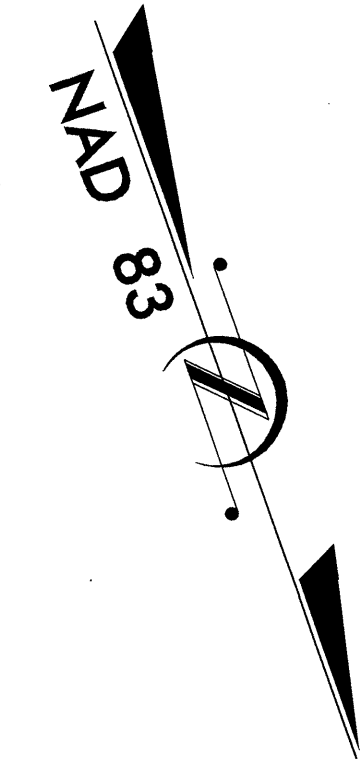
LOCATION: BRIDGE 133 AND APPROACHES ON SR 1310 OVER DUMAS CREEK
TYPE OF WORK: UTILITIES CONSTRUCTION

UC-2

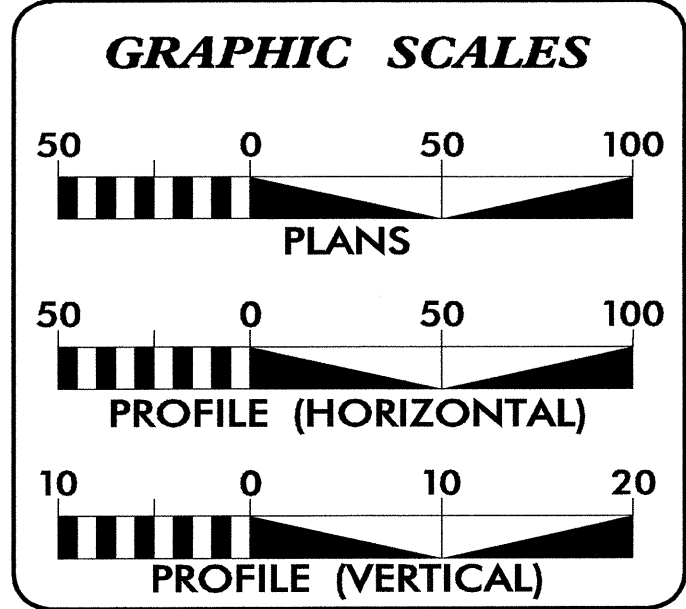


-L- STA. 15+00.00 BEGIN TIP PROJECT B-4205

-L- STA. 23+00.00 END TIP PROJECT B-4205

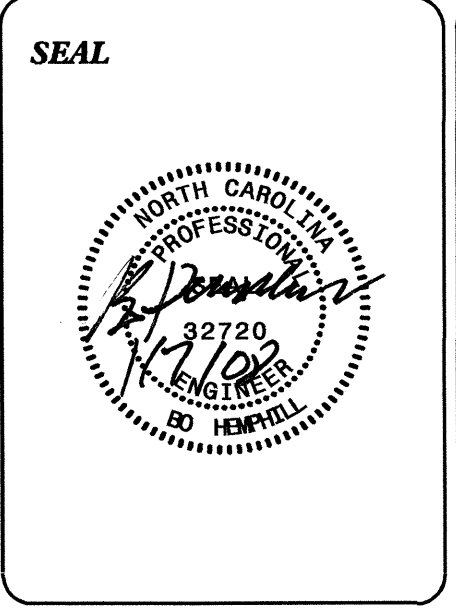


TIP PROJECT: B-4205



SHEET NO.	DESCRIPTION
UC-1	TITLE SHEET
UC-2	UTILITY CONSTRUCTION PLAN SHEET
UC-3	DETAILS SHEET

WATER AND SEWER OWNERS ON PROJECT
(1) MONTGOMERY COUNTY WATER SYSTEM



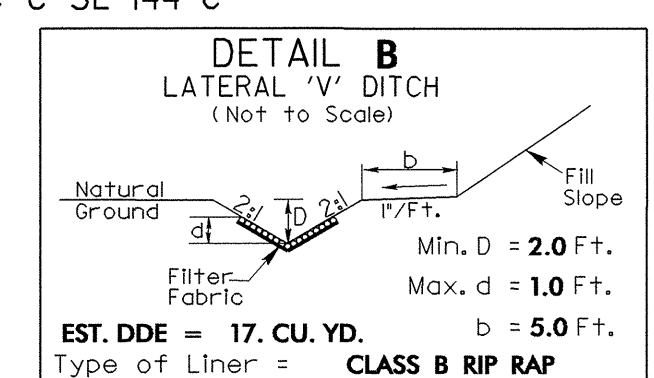
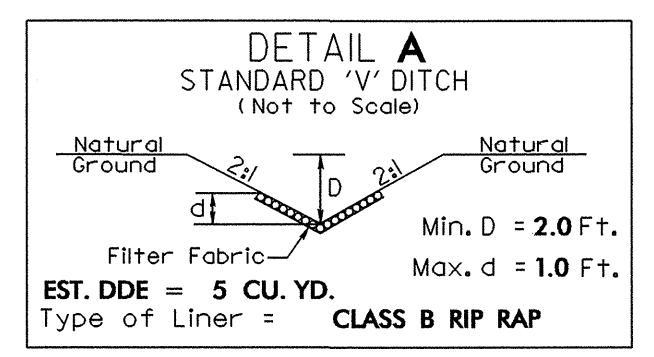
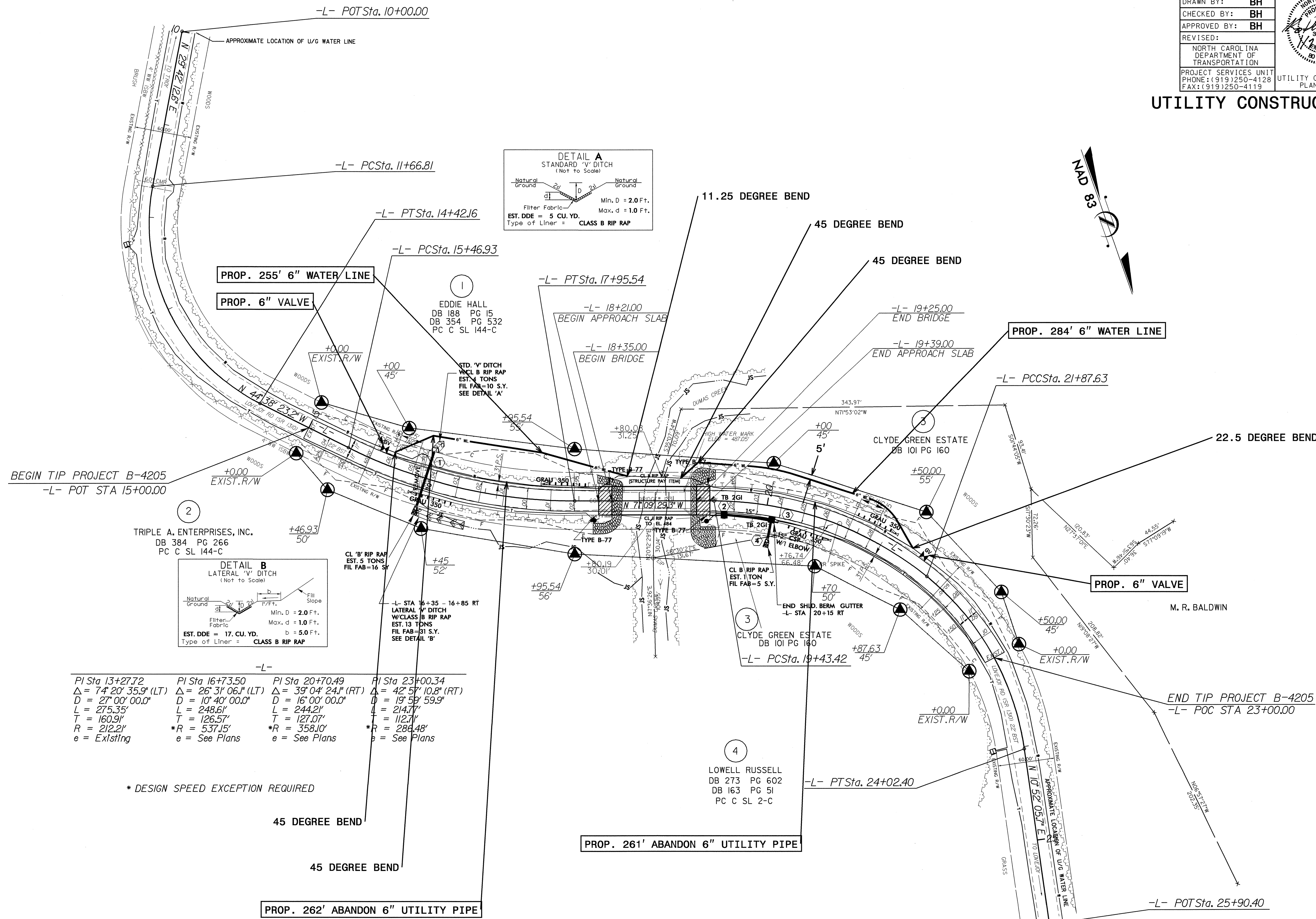
PREPARED IN THE OFFICE OF:
**DIVISION OF HIGHWAYS
PROJECT SERVICES
UTILITIES SECTION**

1591 MAIL SERVICES CENTER
RALEIGH NC 27699-1591
PHONE (919) 250-4128
FAX (919) 250-4119

Roger Worthington, P.E. UTILITIES SECTION ENGINEER
Carl Barclay, P.E. UTILITIES SQUAD LEADER PROJECT ENGINEER
Bo Hemphill, P.E. UTILITIES PROJECT DESIGNER

07-JAN-2008 13:34 P:\Utilities\rdy\ut\proj\b4205_ut_title_ucl_psh.dgn \$\$\$USERNAME\$\$\$

UTILITY CONSTRUCTION



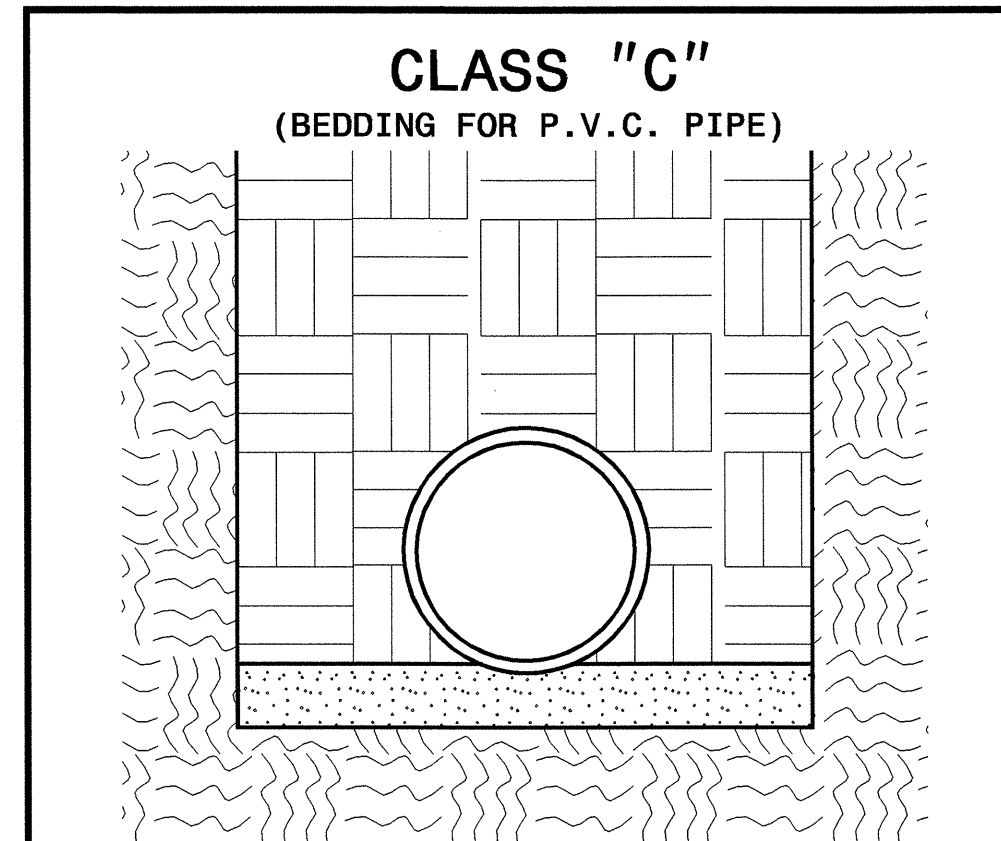
-L-	
PI Sta 13+27.72	PI Sta 16+73.50
$\Delta = 74^{\circ} 20' 35.9"$ (LT)	$\Delta = 26^{\circ} 31' 06.1"$ (LT)
D = 27' 00" 00.0"	D = 10' 40" 00.0"
L = 275.35'	L = 248.61'
T = 160.91'	T = 126.57'
R = 212.21'	*R = 537.15'
e = Existing	e = See Plans
PI Sta 20+70.49	PI Sta 23+00.34
$\Delta = 39^{\circ} 04' 24.1"$ (RT)	$\Delta = 42^{\circ} 57' 10.8"$ (RT)
D = 16' 00" 00.0"	D = 19' 59' 59.9"
L = 244.21'	L = 214.77'
T = 127.07'	T = 112.71'
*R = 358.10'	*R = 286.48'
e = See Plans	e = See Plans

* DESIGN SPEED EXCEPTION REQUIRED

5/14/99
07-JAN-2008 15:08
\\nu1111\proj\2008\B-4205\ut_04_uc2_psh.dgn

PROJECT REFERENCE NO.	SHEET NO.
B-4025	UC-3
DESIGNED BY: BH	
DRAWN BY: BH	
CHECKED BY: BH	
APPROVED BY: BH	
REVISED:	
NORTH CAROLINA DEPARTMENT OF TRANSPORTATION	
PROJECT SERVICES UNIT PHONE: (919)250-4128 FAX: (919)250-4119	
UTILITY CONSTRUCTION PLANS ONLY	

UTILITY CONSTRUCTION

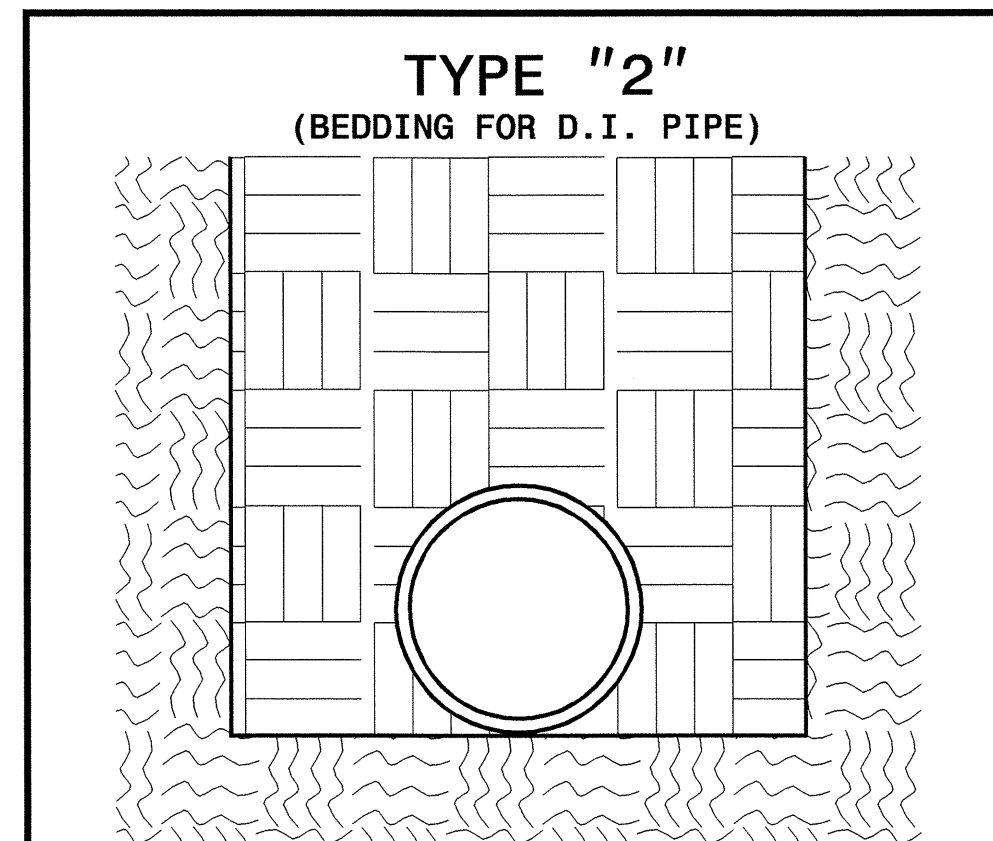


CLASS "C"
 (BEDDING FOR P.V.C. PIPE)

PIPE BEDDED IN LOOSE MATERIAL, LIGHTLY TAMPED WITH A MINIMUM OF 6" UNDER PIPE. TRENCH BACKFILLED IN LOOSE 6" LAYERS COMPACTED TO TOP OF TRENCH USING LOCAL EXCAVATED MATERIAL, IF APPROVED BY THE ENGINEER, OR SELECT MATERIAL. ALL MATERIAL SHALL BE FREE OF ROCKS, FOREIGN MATERIAL, AND FROZEN EARTH. COMPACTION SHALL BE TO APPROX. 95% DENSITY IN ACCORDANCE WITH AASHTO T-99 AS MODIFIED BY THE DEPARTMENT OF TRANSPORTATION.

**MAXIMUM TRENCH WIDTH
 AT TOP OF PIPE**

NOMINAL PIPE SIZE (INCHES)	TRENCH WIDTH (INCHES)	NOMINAL PIPE SIZE (INCHES)	TRENCH WIDTH (INCHES)
4	28	20	44
6	30	24	48
8	32	30	54
10	34	36	60
12	36	42	66
14	38	48	72
16	40	54	78
18	42		



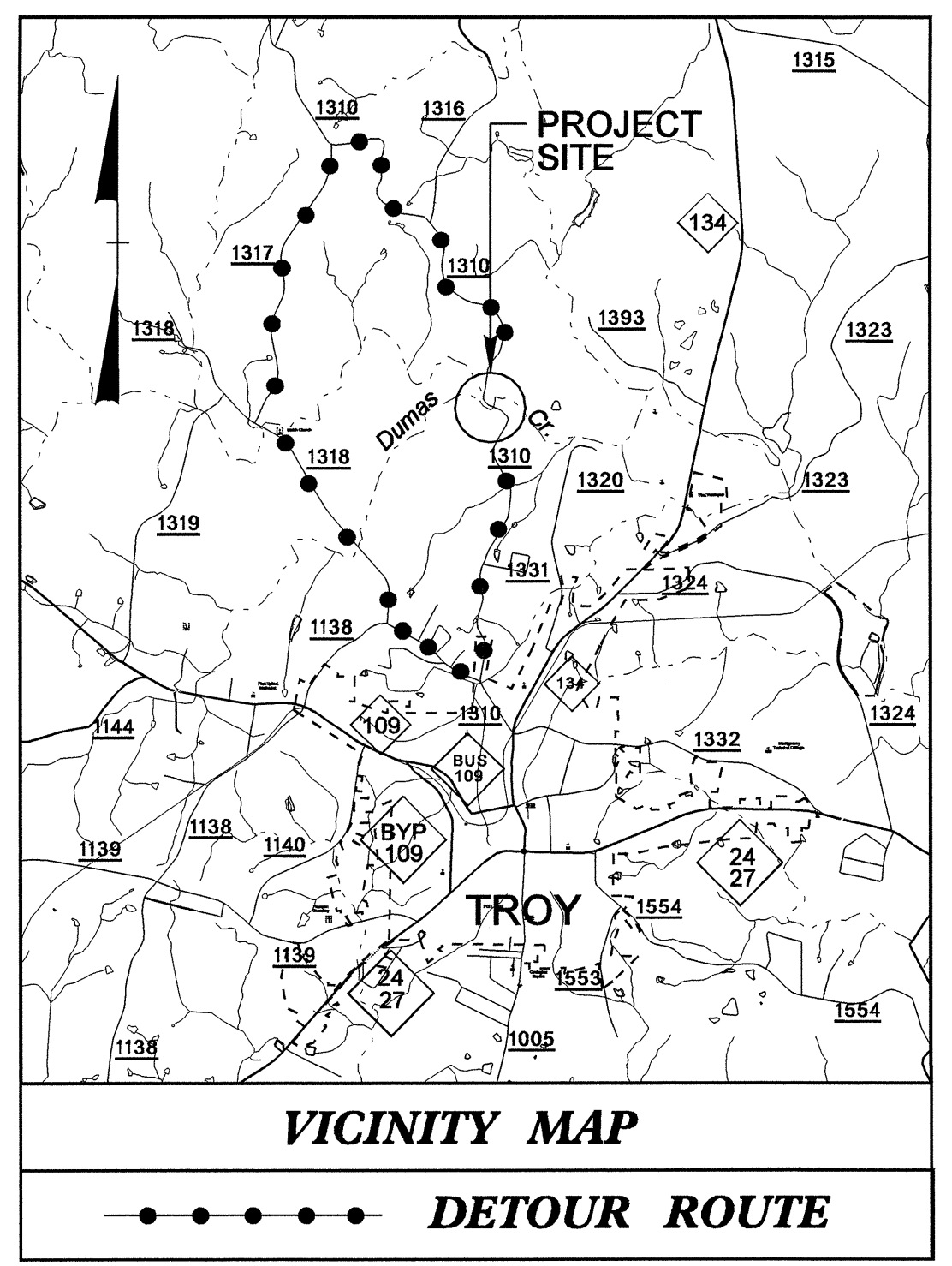
TYPE "2"
 (BEDDING FOR D.I. PIPE)

PIPE BEDDED IN FLAT-BOTTOM TRENCH. TRENCH BACKFILLED IN LOOSE 6" LAYERS COMPACTED TO TOP OF TRENCH USING LOCAL EXCAVATED MATERIAL, IF APPROVED BY THE ENGINEER, OR SELECT MATERIAL. ALL MATERIAL SHALL BE FREE OF ROCKS, FOREIGN MATERIAL, AND FROZEN EARTH. COMPACTION SHALL BE TO APPROX. 95% DENSITY IN ACCORDANCE WITH AASHTO T-99 AS MODIFIED BY THE DEPARTMENT OF TRANSPORTATION.

09/28/99

T.I.P. NO.	SHEET NO.
B-4205	UO-1

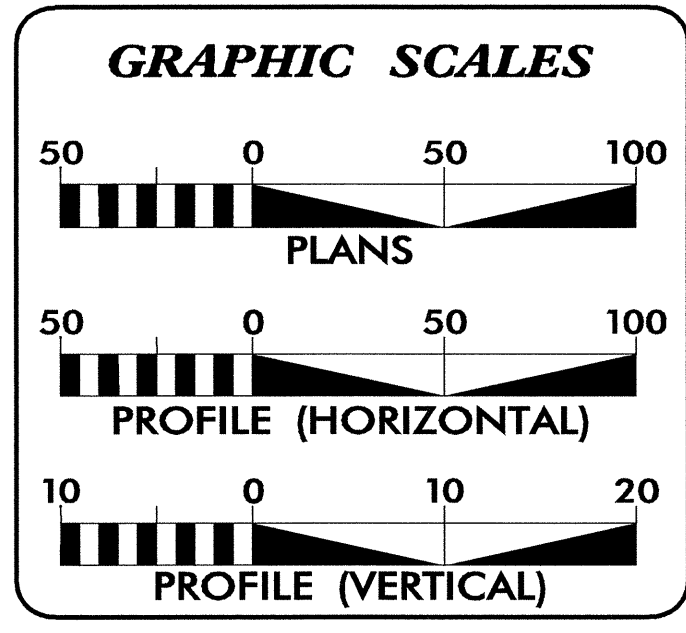
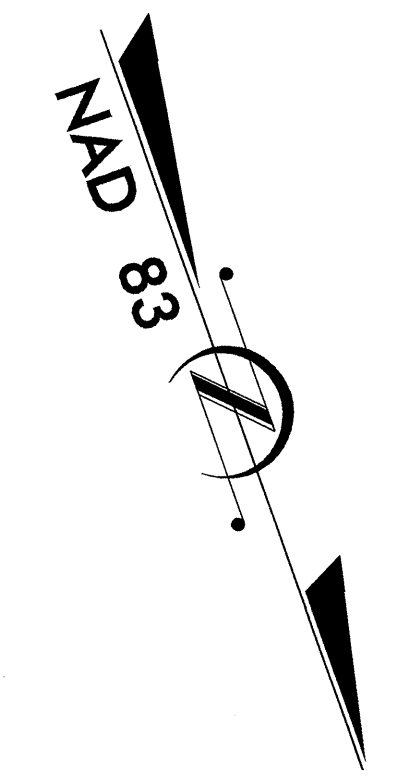
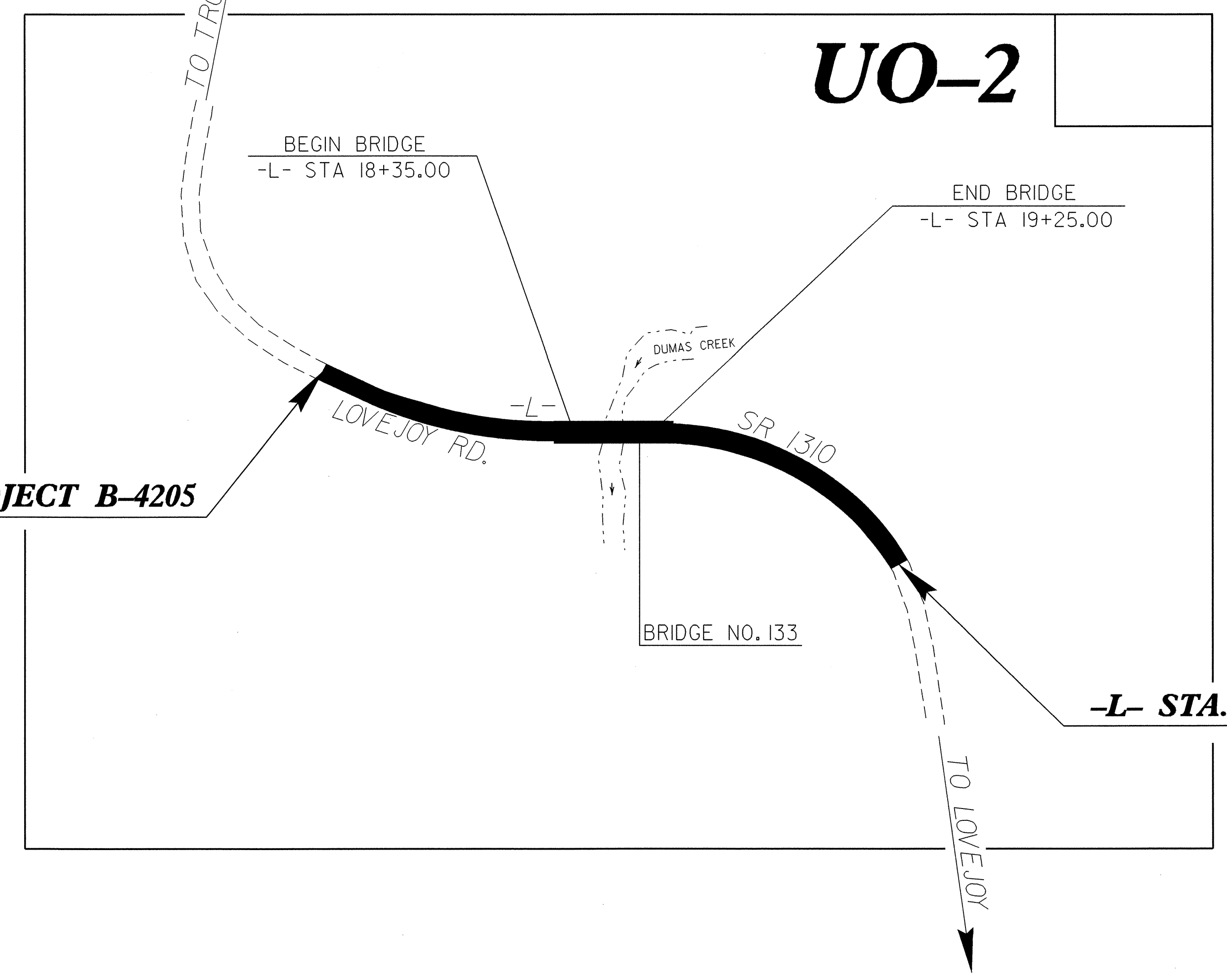
See Sheet 1-A For Index of Sheets



STATE OF NORTH CAROLINA
 DIVISION OF HIGHWAYS

**UTILITIES BY OTHERS PLANS
 MONTGOMERY COUNTY**

LOCATION: BRIDGE 133 AND APPROACHES ON SR 1310 OVER DUMAS CREEK
TYPE OF WORK: UTILITIES CONFLICTS



INDEX OF SHEETS

SHEET NO.	DESCRIPTION
UO-1	TITLE SHEET
UO-2	UTILITIES BY OTHERS PLAN SHEET

UTILITY OWNERS ON PROJECT

(1) Embarq

PREPARED IN THE OFFICE OF:
DIVISION OF HIGHWAYS
PROJECT SERVICES
UTILITIES SECTION

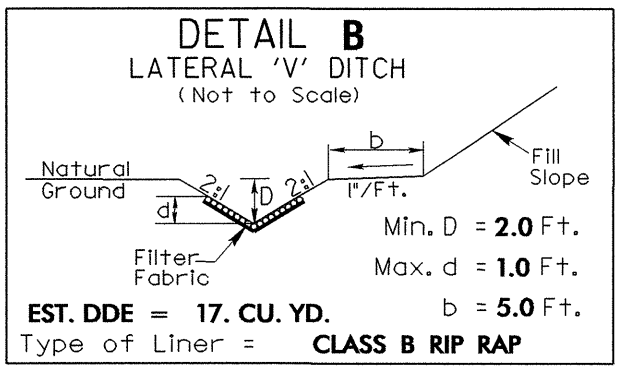
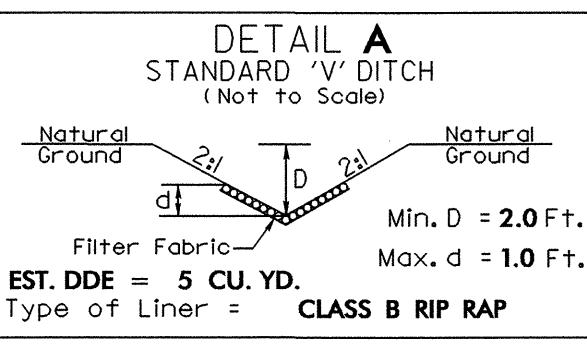
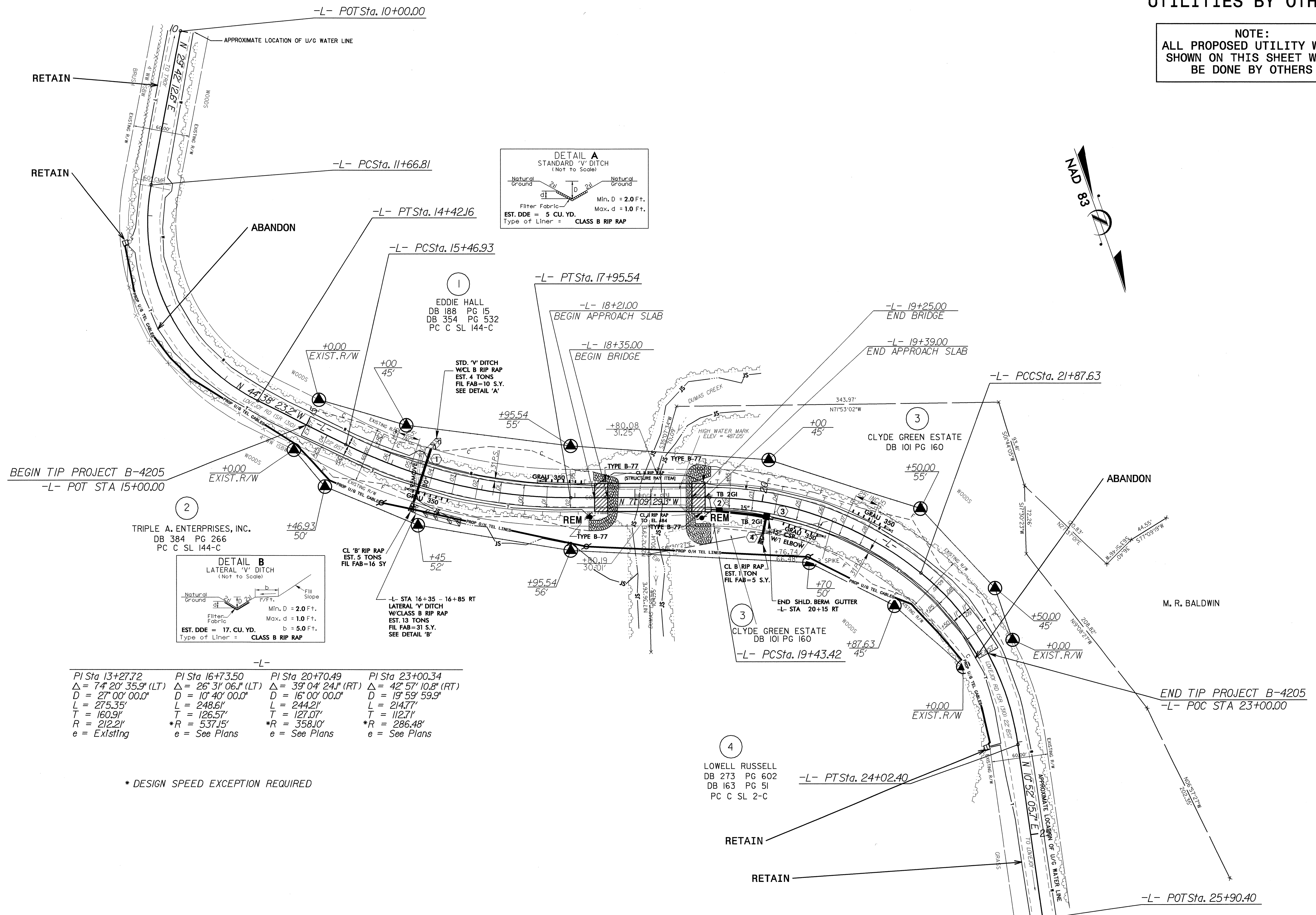
1591 MAIL SERVICES CENTER
 RALEIGH, NC 27699-1591
 PHONE (919) 250-4128
 FAX (919) 250-4119

Roger Worthington, P.E. UTILITIES SECTION ENGINEER
 Carl Barclay, P.E. UTILITIES SQUAD LEADER PROJECT ENGINEER
 Bo Hemphill, P.E. UTILITIES PROJECT DESIGNER

04-JAN-2008 08:33
 P:\Utilities\proj\b4205_ut_title_uol_psh.dgn
 \$\$\$USERNAME\$\$\$

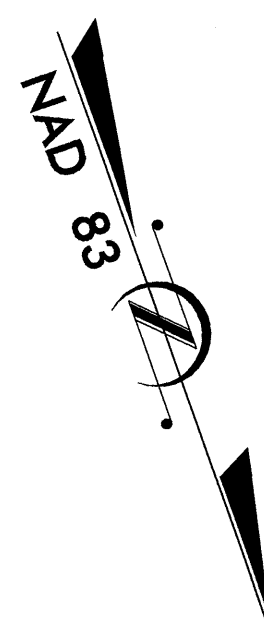
UTILITIES BY OTHERS

NOTE:
 ALL PROPOSED UTILITY WORK SHOWN ON THIS SHEET WILL BE DONE BY OTHERS



-L-	-L-	-L-	-L-
PI Sta 13+27.72	PI Sta 16+73.50	PI Sta 20+70.49	PI Sta 23+00.34
$\Delta = 74^\circ 20' 35.9''$ (LT)	$\Delta = 26^\circ 31' 06.1''$ (LT)	$\Delta = 39^\circ 04' 24.1''$ (RT)	$\Delta = 42^\circ 57' 10.8''$ (RT)
$D = 27^\circ 00' 00.0''$	$D = 10^\circ 40' 00.0''$	$D = 16^\circ 00' 00.0''$	$D = 19^\circ 59' 59.9''$
$L = 275.35'$	$L = 248.61'$	$L = 244.21'$	$L = 214.77'$
$T = 160.91'$	$T = 126.57'$	$T = 127.07'$	$T = 112.71'$
$R = 212.21'$	$*R = 537.15'$	$*R = 358.10'$	$*R = 286.48'$
$e = Existing$	$e = See Plans$	$e = See Plans$	$e = See Plans$

* DESIGN SPEED EXCEPTION REQUIRED



5/14/99
 04-JAN-2008 08:28
 r:\u044b4205_ut_04_uo2.psh.dgn