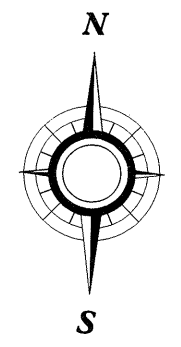
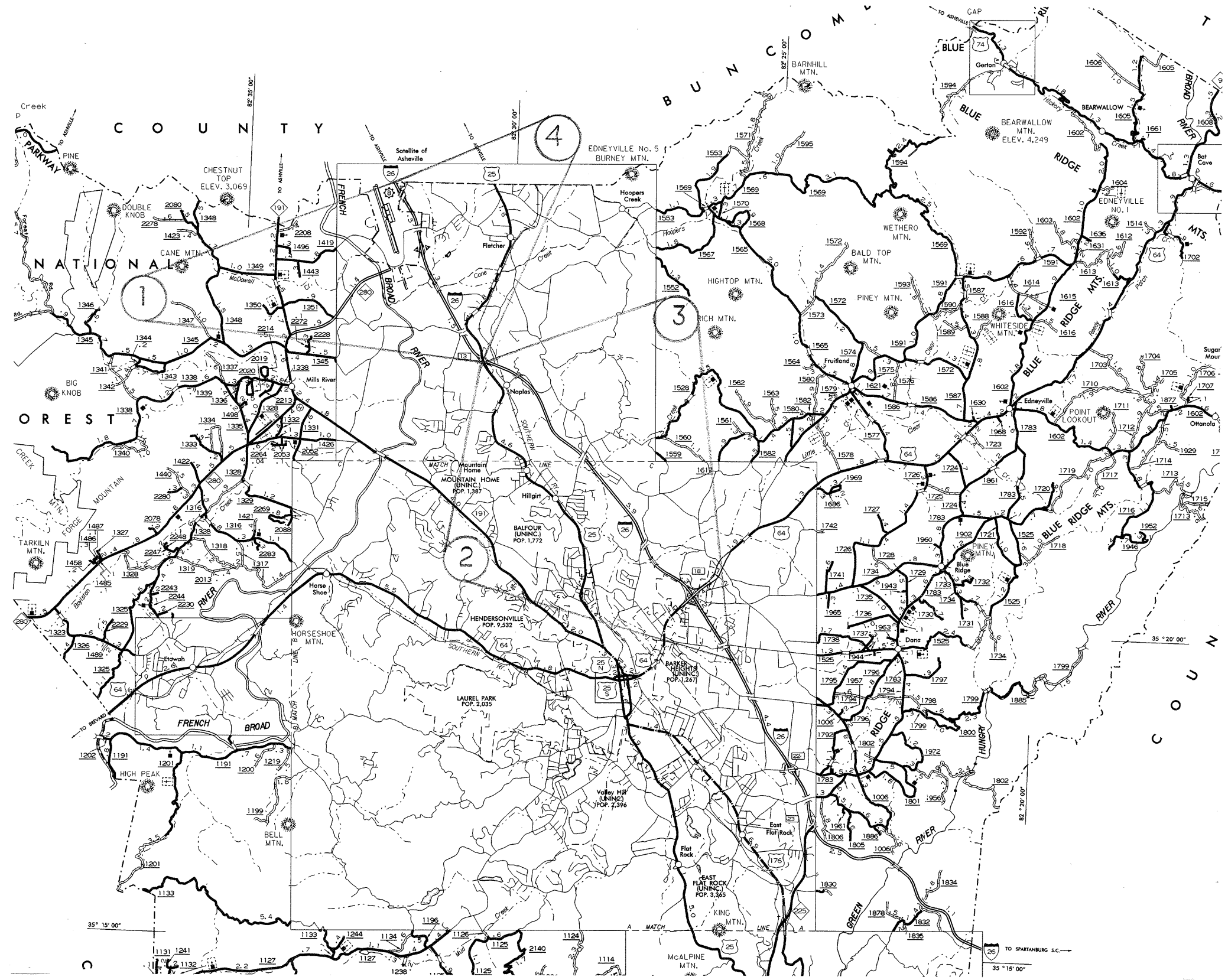
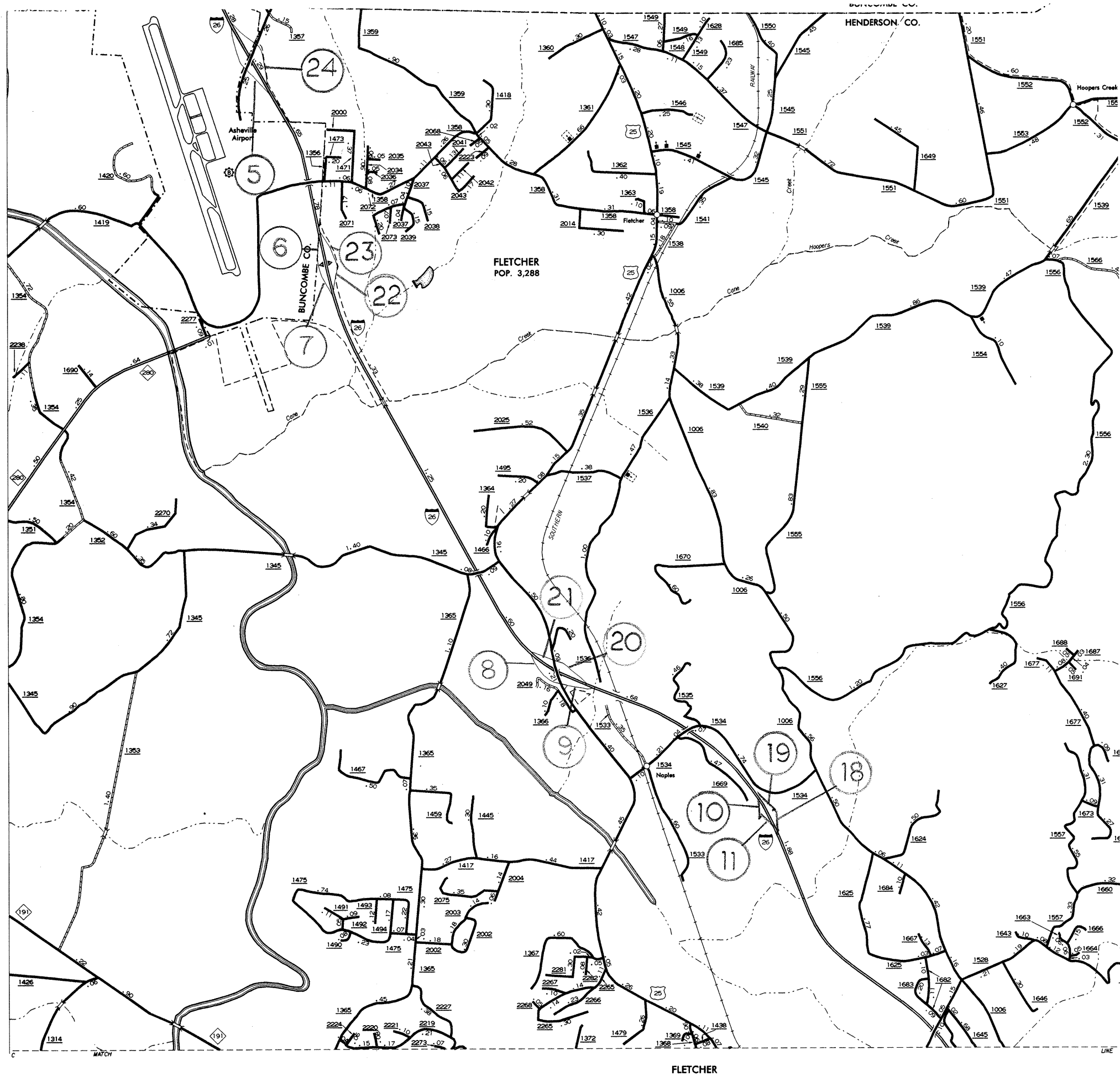


HENDERSON COUNTY

NORTH CAROLINA

PROJECT REFERENCE NO.		SHEET NO.
I-5005A		1 of 11
State Project	F.A. Project No.	Description
41456.3.GV1		

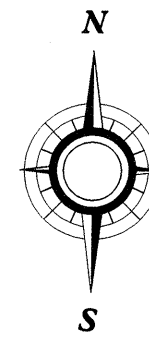




PROJECT REFERENCE NO.		SHEET NO.
I-5005A		2 of 11
State Project	F.A. Project No.	Description
41456.3.GV1		

HENDERSON COUNTY

NORTH CAROLINA

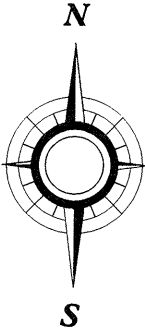


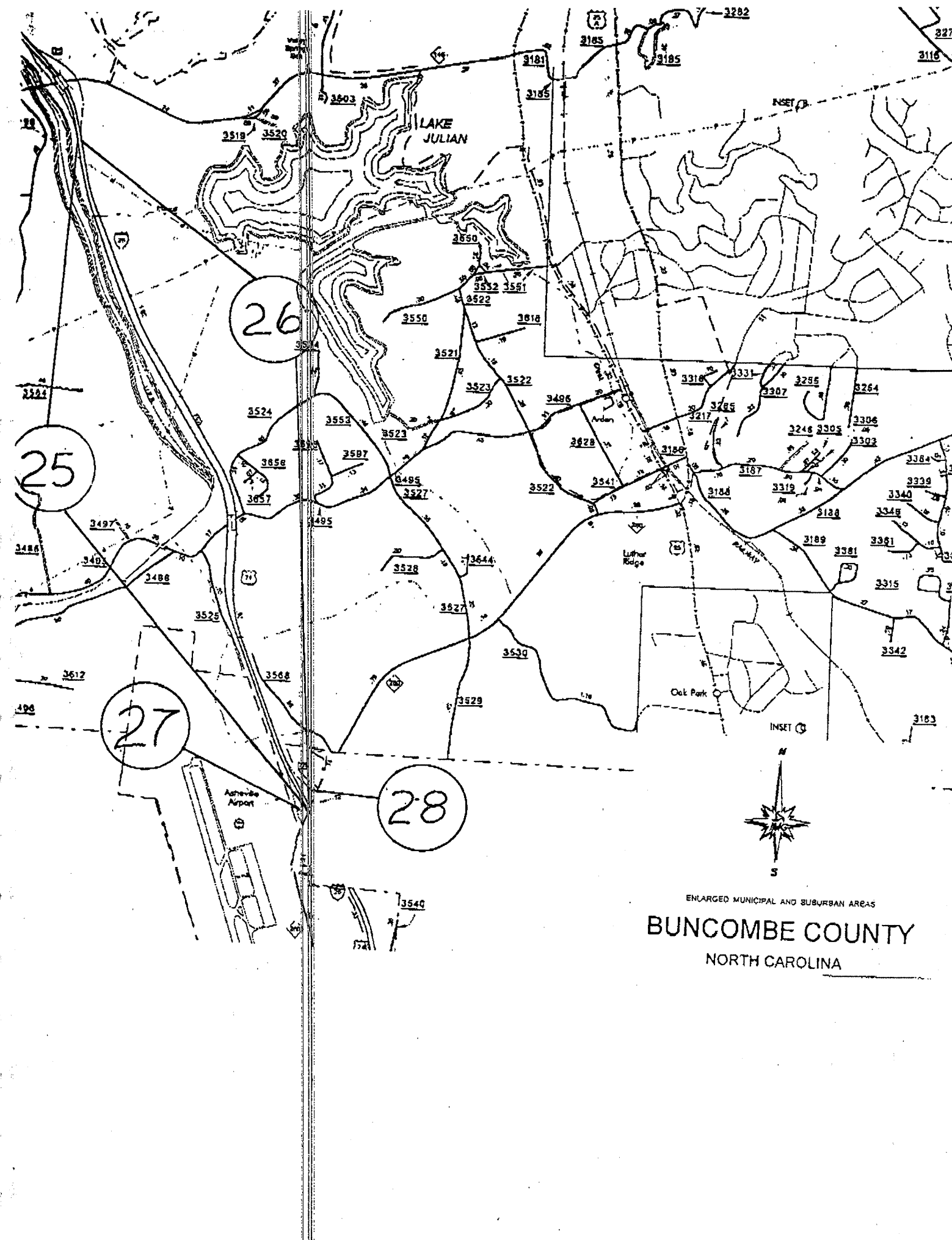
FLETCHER

HENDERSON COUNTY

NORTH CAROLINA

PROJECT REFERENCE NO.		SHEET NO.
I-5005A		3 of 11
State Project	F.A. Project No.	Description
41456.3.GV1		



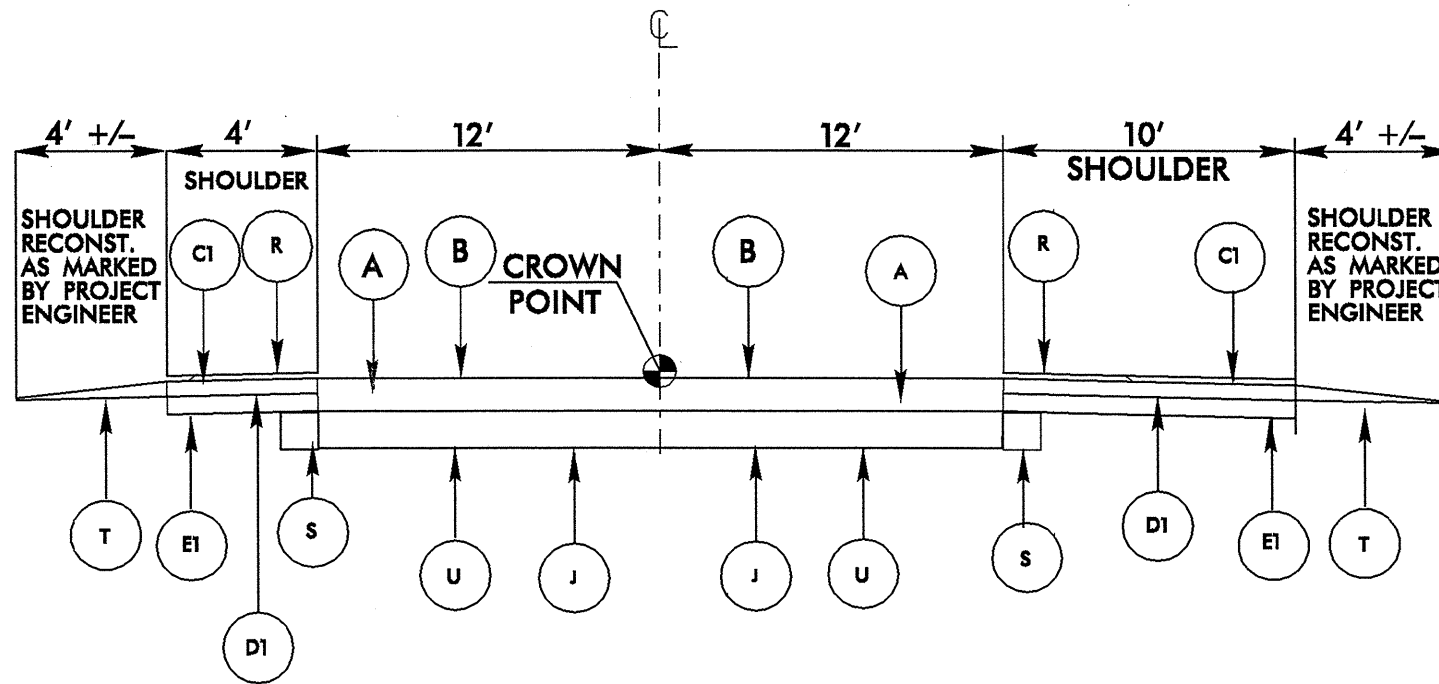


5/28/09
 08-JAN-2008 07:31
 Projects\division 14\I-5005aconc\126\pjr-ev.dgn

**PAVEMENT SCHEDULE
FINAL DESIGN**

A	REMOVE AND REPLACE CONCRETE PAVEMENT AS DIRECTED BY THE ENGINEER
B	DIAMOND GRINDING OF CONCRETE PAVEMENT
C1	PROP. APPROX. 2" ASPHALT CONCRETE SURFACE COURSE, TYPE S9.5B, AT AN AVERAGE RATE OF 224 LBS. PER SQ. YARD
C2	PROP. APPROX. 1 1/2" ASPHALT CONCRETE SURFACE COURSE TYPE S 9.5 B AT AN AVERAGE RATE OF 168 LBS PER SQ. YARD
D1	PROP. APPROX. 3" ASPHALT CONCRETE INTERMEDIATE COURSE, TYP A 119.B, AT AN AVERAGE RATE OF 342 LBS. PER SQ. YARD
E1	PROP. APPROX. 4" ASPHALT CONCRETE BASE COURSE, TYPE B25.0B, AT AN AVERAGE RATE OF 456 LBS. PER SQ. YARD
J	CLASS IV SUBGRADE STABILIZATION IN UNDERCUT AREAS AS DIRECTED BY PROJECT ENGINEER
R	MILLED RUMBLE STRIPS
S	PROP. SHOULDER DRAIN AS DIRECTED BY THE ENGINEER
T	SHOULDER RECONSTRUCTION WITH ABCM - SEE SPECIAL PROVISIONS
U	UNDERCUT EXCAVATION AS DIRECTED BY THE ENGINEER
V	MILLING ASPHALT PAVEMENT 1 1/2" DEPTH

PROJECT REFERENCE NO.		SHEET NO.
I-5005A		5 of 11
State Project	F.A. Project No.	Description
41456.3.GV1		



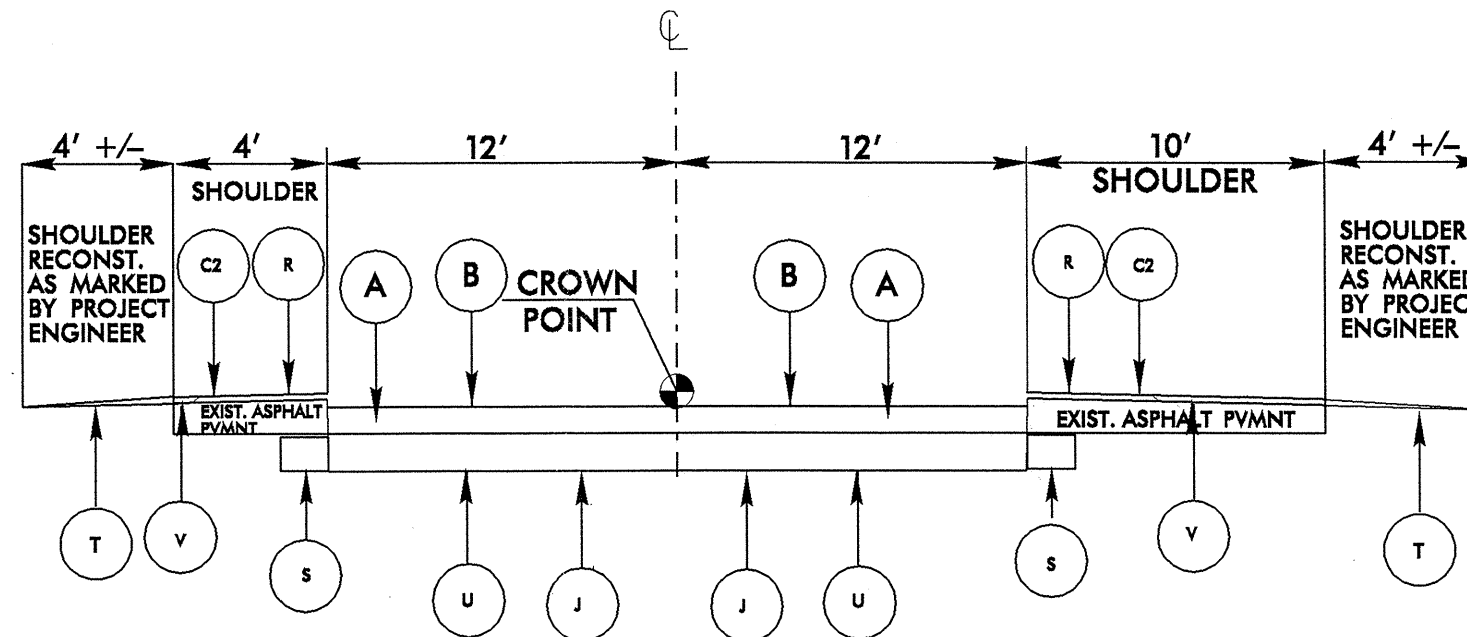
**TYPICAL SECTION NO. 1
I- 26 EAST & WEST BOUND ROADWAY**

ROADWAY ENGLISH STANDARD DRAWINGS

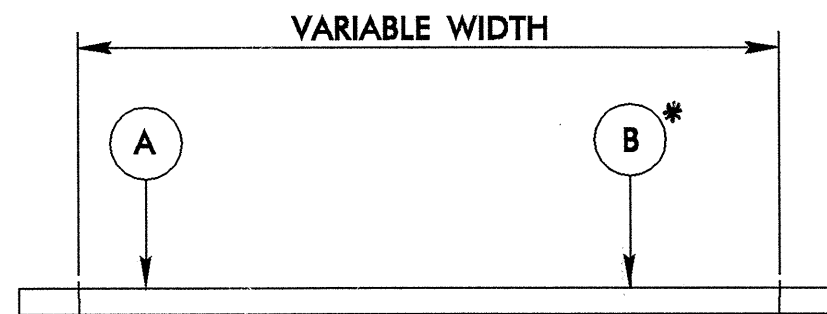
The following Roadway Standards as appear in "Roadway Standard Drawings" Highway Design Branch - N.C. Department of Transportation - Raleigh, N.C. , Dated July 2006 are applicable to this project and by reference hereby are considered a part of these plans:

STD. NO.	TITLE
816.01	Concrete Pads for Shoulder Drain Installation
816.02	Aggregate Shoulder Drain
816.04	Markers for Drainage Structure and Concrete Pad

PROJECT REFERENCE NO.		SHEET NO.
I-5005A		6 of 11
State Project	F.A. Project No.	Description
41456.3.GV1		



TYPICAL SECTION NO. 2
I- 26 EAST & WEST BOUND ROADWAY



TYPICAL SECTION NO. 3
RAMPS

* DIAMOND GRINDING AT PAVEMENT TIE FROM RAMPS TO MAINLINE ONLY, AS DIRECTED BY THE ENGINEER.

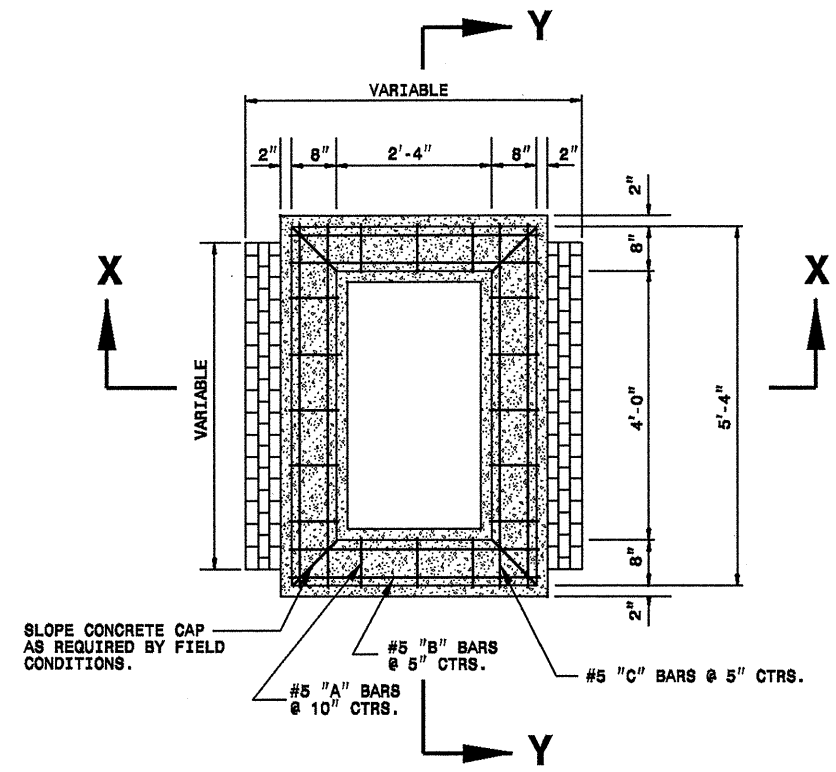
41456.3.GV1

- NOTES:
- USE CLASS 'B' CONCRETE.
 - DIMENSIONS MAY BE ADJUSTED TO SUIT FIELD CONDITIONS AS DIRECTED BY THE ENGINEER.
 - CONSTRUCT IN ACCORDANCE WITH SECTION 859 OF THE STANDARD SPECIFICATIONS.

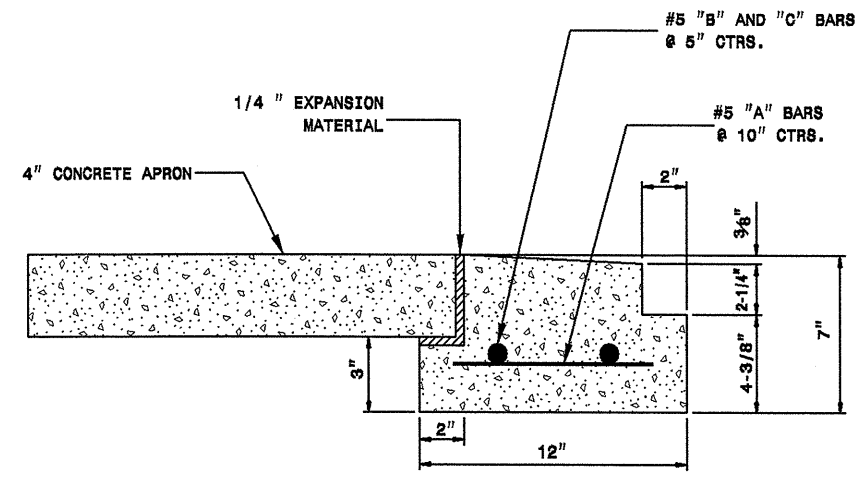
BILL OF MATERIAL

BAR NO.	NO.	SIZE	LENGTH	WEIGHT
A	16	5	9"	13
B	4	5	3'-5"	14
C	4	5	5'-1"	21
TOTAL REINF. STEEL (lbs.)				48
BRICK MASONRY (per ft. ht.) (cu. yds.)				0.38
CLASS 'B' CONC. (cu. yds.)				0.23

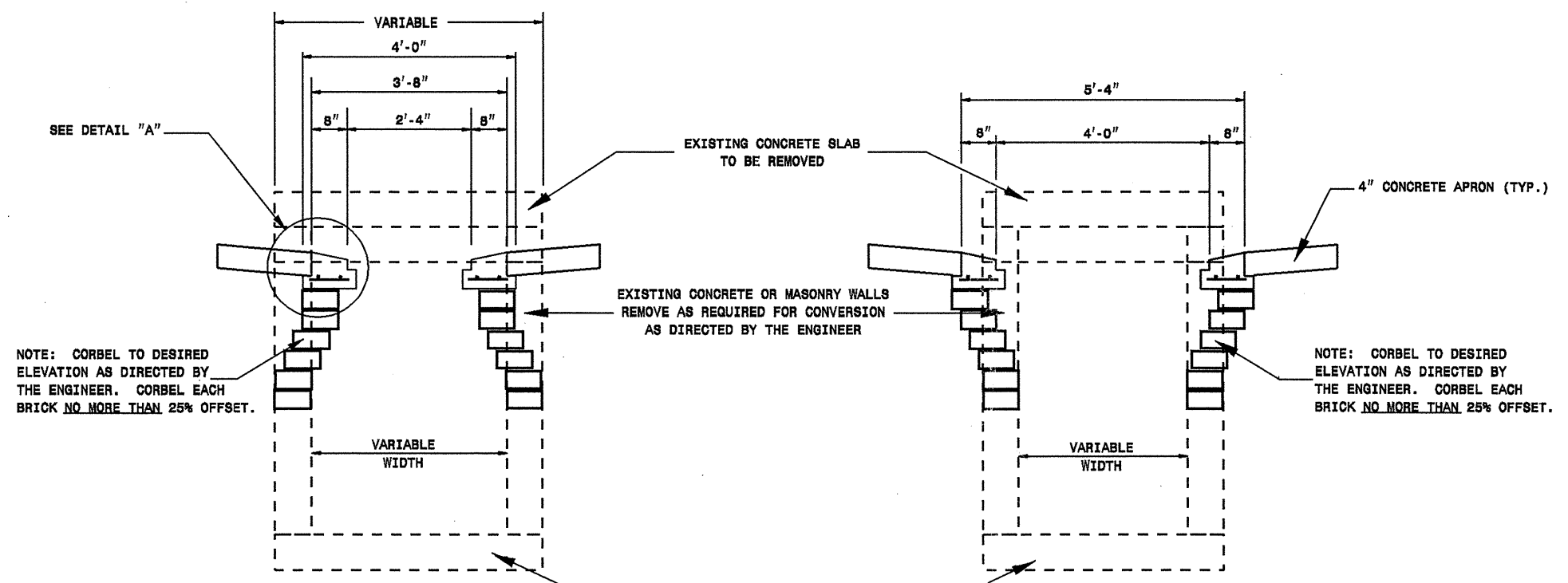
FRAME AND GRATES	STD. NO.
PREFERRED:	840.22
	840.24
ACCEPTABLE:	840.20
	840.29
	840.33



**PLAN VIEW
APRON NOT SHOWN**



**DETAIL "A"
CONCRETE CAP WITH APRON**



SECTION X-X

SECTION Y-Y

**DESIGN SERVICES UNIT
STANDARDS AND SPECIAL DESIGN**
Office 919-250-4128 FAX 919-250-4119

**CONVERT EXISTING
OPEN THROAT CATCH BASIN
TO MEDIAN DROPP INLET**

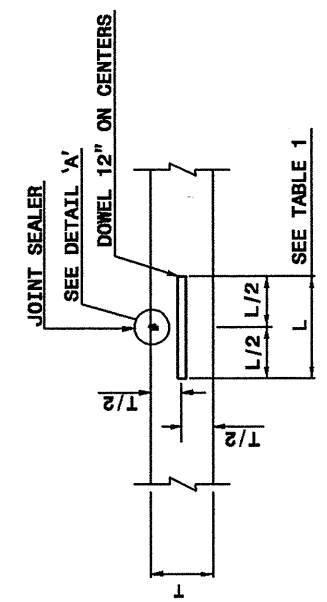
ORIGINAL BY: L.M.LEWIS DATE: 3/97
 MODIFIED BY: E.E.WARD DATE: 1/00
 CHECKED BY: DATE:
 FILE SPEC.: w:\usr\detailed\stand\cbto2d1.dgn

STATE OF NORTH CAROLINA
DEPT. OF TRANSPORTATION
DIVISION OF HIGHWAYS
RALEIGH, N.C.

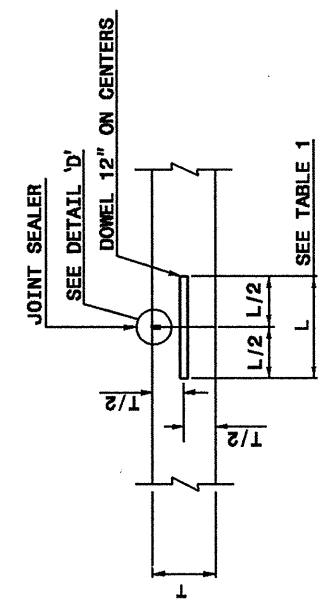
ENGLISH DETAIL DRAWING FOR
CONCRETE PAVEMENT JOINTS
CONSTRUCTION AND CONTRACTION JOINTS

SHEET 1 OF 2
700D01

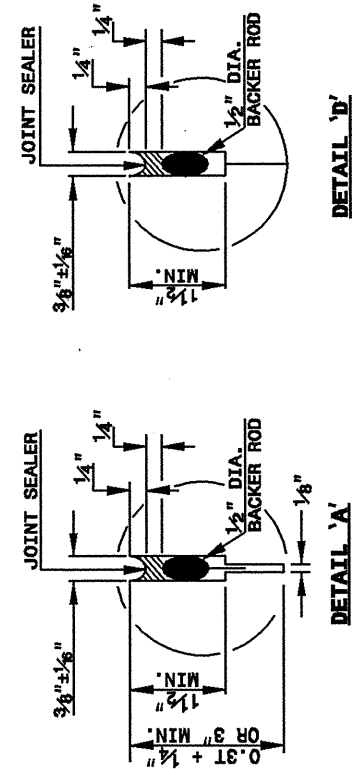
- GENERAL NOTES:
- FORM TRANSVERSE CONTRACTION JOINTS BY SAWING WITH APPROVED EQUIPMENT.
 - SPACE TRANSVERSE CONTRACTION JOINTS AT INTERVALS OF 15'. ←
 - USE A DOWEL ASSEMBLY OR OTHER APPROVED DOWEL INSERTION TECHNIQUE IN ALL TRANSVERSE CONTRACTION JOINTS.
 - DOWEL ASSEMBLIES ARE COVERED IN DETAIL 700D03.
 - PROVIDE SMOOTH DOWEL BARS. PROVIDE DEFORMED TIE BARS.
 - WHEN UTILIZING AN EARLY ENTRY SAW, CUT THE JOINT TO A MINIMUM DEPTH OF 3".



TRANSVERSE CONTRACTION JOINT



PLANNED TRANSVERSE CONSTRUCTION JOINT



DETAIL 'A'

TABLE I - DOWEL BARS

SLAB THICKNESS	DOWEL BAR "D"	DOWEL BAR LENGTH "L"
8" OR LESS	1"	14"
8 1/2" TO 9 1/2"	1 1/8"	16"
10" TO 10 1/2"	1 1/4"	18"
11" AND ABOVE	1 1/2"	18"

DETAIL 'D'

STATE OF NORTH CAROLINA
DEPT. OF TRANSPORTATION
DIVISION OF HIGHWAYS
RALEIGH, N.C.

ENGLISH DETAIL DRAWING FOR
CONCRETE PAVEMENT JOINTS
CONSTRUCTION AND CONTRACTION JOINTS

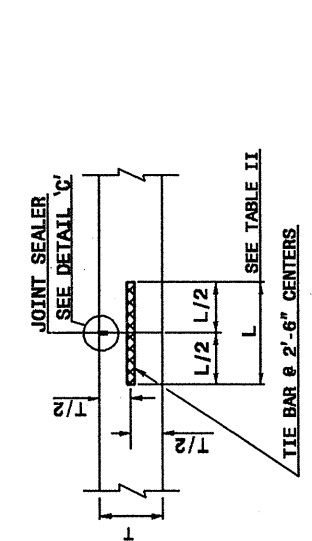
SHEET 1 OF 2
700D01

STATE OF NORTH CAROLINA
DEPT. OF TRANSPORTATION
DIVISION OF HIGHWAYS
RALEIGH, N.C.

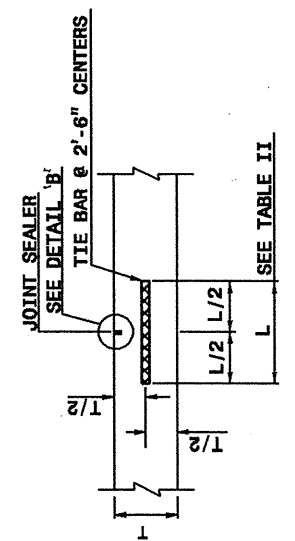
ENGLISH DETAIL DRAWING FOR
CONCRETE PAVEMENT JOINTS
CONSTRUCTION AND CONTRACTION JOINTS

SHEET 2 OF 2
700D01

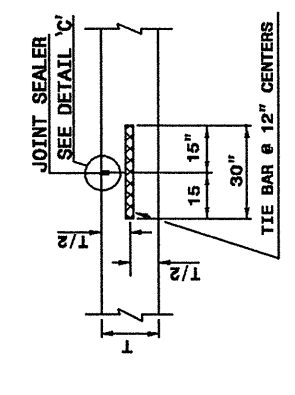
- GENERAL NOTES:
- CONSTRUCT TRANSVERSE CONTRACTION JOINTS AT THE END OF EACH DAY'S OPERATION (PLANNED JOINT) OR WHEN THE PLACING OF CONCRETE IS SUSPENDED FOR MORE THAN 30 MINUTES (EMERGENCY JOINT).
 - USE AN APPROVED HEADER AT EMERGENCY JOINTS STD. DWG. 700.04 AND DESIGNED TO PERMIT THE PLACEMENT OF AND CORRECTLY HOLD IN PLACE TIE BARS.
 - USE TIE BARS OF THE SAME DIAMETER AS DOWEL BARS FOR EMERGENCY TRANSVERSE CONTRACTION JOINTS.
 - LOCATE PLANNED TRANSVERSE CONTRACTION JOINTS AT THE SPACING REQUIRED FOR CONTRACTION JOINTS. USE AN APPROVED METHOD OF INSTALLING DOWELS IN ALL PLANNED TRANSVERSE CONTRACTION JOINTS.
 - DO NOT LOCATE EMERGENCY TRANSVERSE CONTRACTION JOINTS LESS THAN 6' FROM ANY CONTRACTION JOINT OR PLANNED CONTRACTION JOINT.
 - DO NOT PLACE TIE BARS IN LONGITUDINAL JOINTS WITHIN 1'-4" OF A TRANSVERSE JOINT.
 - WHEN UTILIZING AN EARLY ENTRY SAW, CUT THE JOINT TO A MINIMUM DEPTH OF 3".



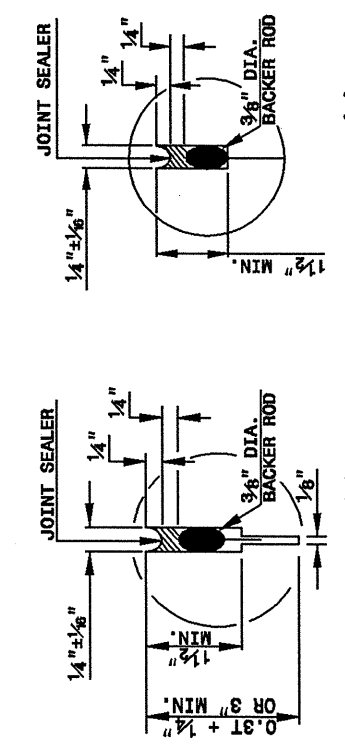
LONGITUDINAL CONSTRUCTION JOINT



LONGITUDINAL JOINT



EMERGENCY TRANSVERSE CONSTRUCTION JOINT



DETAIL 'B'

TABLE II - LONGITUDINAL TIE BARS

SLAB THICKNESS	TIE BAR DIA. "D"	TIE BAR LENGTH "L"
8 1/2" OR LESS	1/2"	30"
9" OR ABOVE	5/8"	30"

DETAIL 'C'

STATE OF NORTH CAROLINA
DEPT. OF TRANSPORTATION
DIVISION OF HIGHWAYS
RALEIGH, N.C.

ENGLISH DETAIL DRAWING FOR
CONCRETE PAVEMENT JOINTS
CONSTRUCTION AND CONTRACTION JOINTS

SHEET 2 OF 2
700D01

PROJECT SERVICES UNIT
STANDARDS AND SPECIAL DESIGN
Office 919-250-4128 FAX 919-250-4119

SEE PLATE FOR TITLE

ORIGINAL BY: 2002 STANDARDS DATE: 01-15-02
MODIFIED BY: E.E. WARD DATE: 09-28-06
CHECKED BY: DATE:
FILE SPEC.: stds/08stdstocdetails/english/700d01.dwg

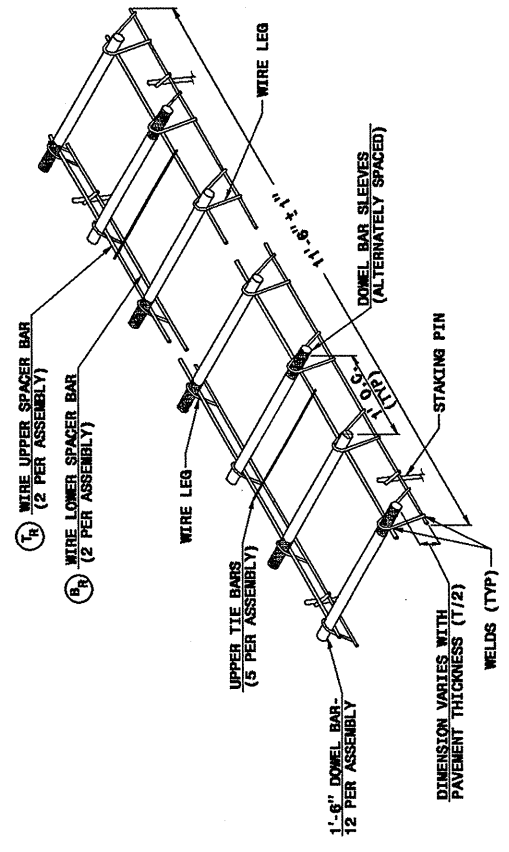
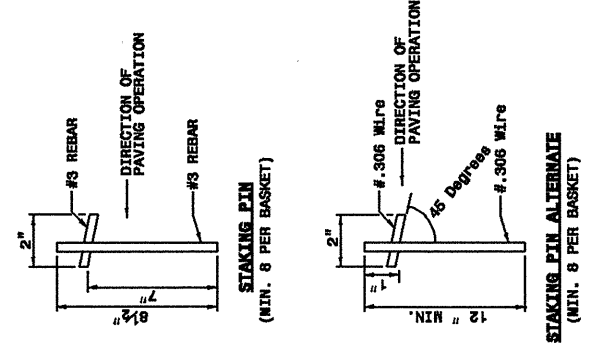
 STATE OF NORTH CAROLINA
 DEPT. OF TRANSPORTATION
 DIVISION OF HIGHWAYS
 RALEIGH, N.C.

STATE OF NORTH CAROLINA
 DEPT. OF TRANSPORTATION
 DIVISION OF HIGHWAYS
 RALEIGH, N.C.

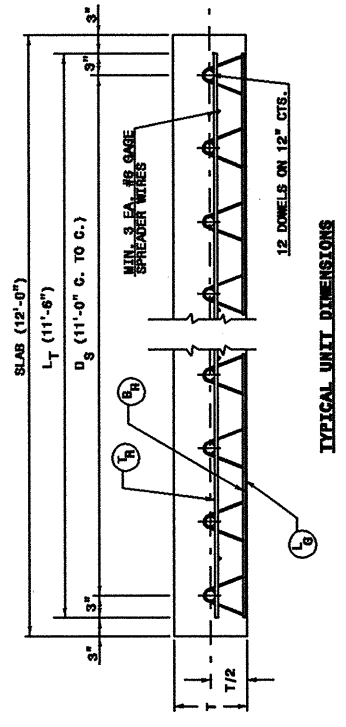
STATE OF NORTH CAROLINA
 DEPT. OF TRANSPORTATION
 DIVISION OF HIGHWAYS
 RALEIGH, N.C.

ENGLISH DETAIL DRAWING FOR
DOWEL ASSEMBLY

ENGLISH DETAIL DRAWING FOR
DOWEL ASSEMBLY



ISOMETRIC VIEW



TYPICAL UNIT DIMENSIONS

"V" LEG ONLY		
SLAB THICKNESS	T _R	L _G
8" OR LESS	2	2
8 1/2" - 10"	0	2
10 1/2" & ABOVE	2/0's	2/0's

GENERAL NOTES:
 -USE RIGID CONSTRUCTED DOWEL ASSEMBLY CAPABLE OF HOLDING THE DOWEL BAR IN PROPER POSITION DURING PLACEMENT OF CONCRETE AND DESIGNED AS TO PERMIT UNRESTRICTED MOVEMENT OF THE SLAB. USE DOWEL ASSEMBLY APPROVED BY THE ENGINEER PRIOR TO USE.
 -USE DOWEL ASSEMBLIES MANUFACTURED WITH DOMELS ALTERNATELY WELDED TO FRAME MEMBERS.
 -USE STAKING PIN OR APPROVED ALTERNATE.
 -SAND CUT EPOXY COATED DOMELS, BUFFING AS NECESSARY TO FACILITATE PROPER WELDING OF THE DOWEL TO THE ASSEMBLY FRAME.
 -TOUCH UP OF THE BUFFED AREA WILL NOT BE REQUIRED.
 -RESISTANCE WELD FRAME MEMBERS; DOWELS AND SPREADER WIRES MAY BE ARC WELDED. WELD IN ACCORDANCE WITH AWS WELDING CODE.
 -FULLY DIP THE DOWEL ASSEMBLIES TO ASSURE A COMPLETE COATING OF MAX.
 -SEE DETAIL 700D01 FOR DOWEL BAR SIZES.

SHEET 1 OF 2
700D03

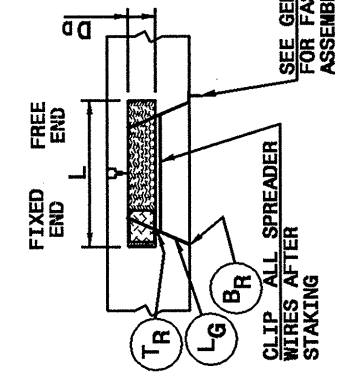
SHEET 1 OF 2
700D03

STATE OF NORTH CAROLINA
 DEPT. OF TRANSPORTATION
 DIVISION OF HIGHWAYS
 RALEIGH, N.C.

STATE OF NORTH CAROLINA
 DEPT. OF TRANSPORTATION
 DIVISION OF HIGHWAYS
 RALEIGH, N.C.

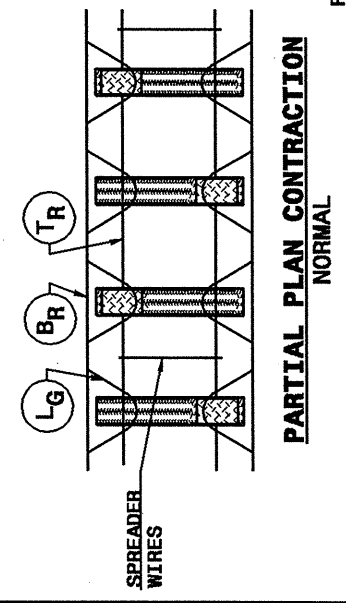
ENGLISH DETAIL DRAWING FOR
DOWEL ASSEMBLY

ENGLISH DETAIL DRAWING FOR
DOWEL ASSEMBLY

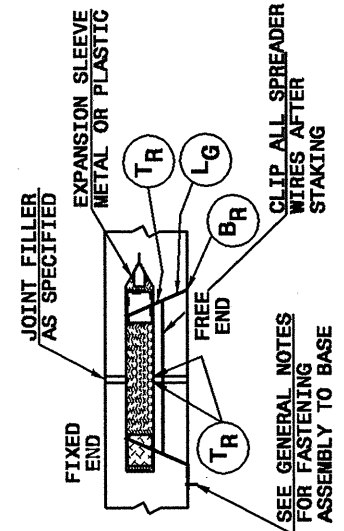


SEE GENERAL NOTES FOR FASTENING ASSEMBLY TO BASE
 CLIP ALL SPREADER WIRES AFTER STAKING

SECTION - CONTRACTION

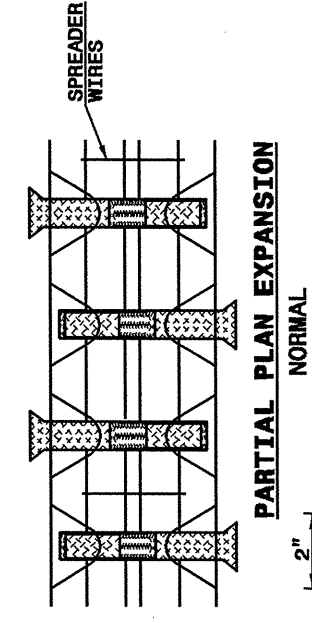


PARTIAL PLAN CONTRACTION NORMAL

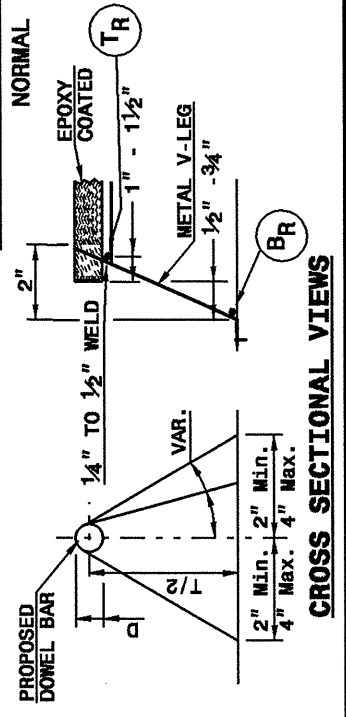


SEE GENERAL NOTES FOR FASTENING ASSEMBLY TO BASE

SECTION - EXPANSION



PARTIAL PLAN EXPANSION NORMAL



CROSS SECTIONAL VIEWS

PROJECT SERVICES UNIT
 STANDARDS AND SPECIAL DESIGN
 Office 919-250-4128 FAX 919-250-4119

SEE PLATE FOR TITLE

ORIGINAL BY: 2002 STANDARDS DATE: 01-15-02
 MODIFIED BY: E.E. WARD DATE: 12-15-05
 CHECKED BY: DATE:
 FILE SPEC: stds/02stdstodetails/english/700d01.dgn

SHEET 2 OF 2
700D03

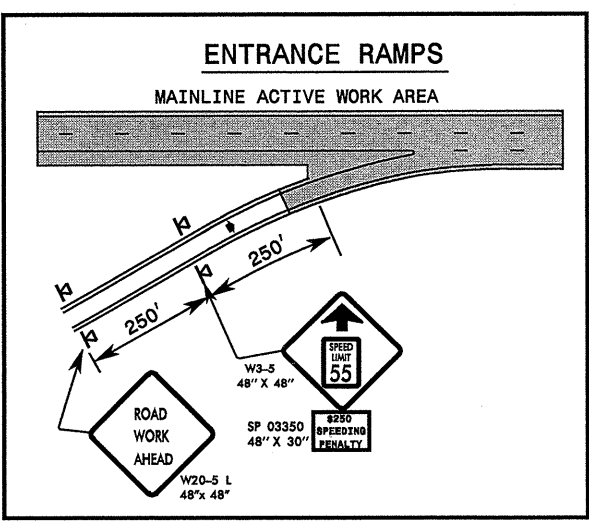
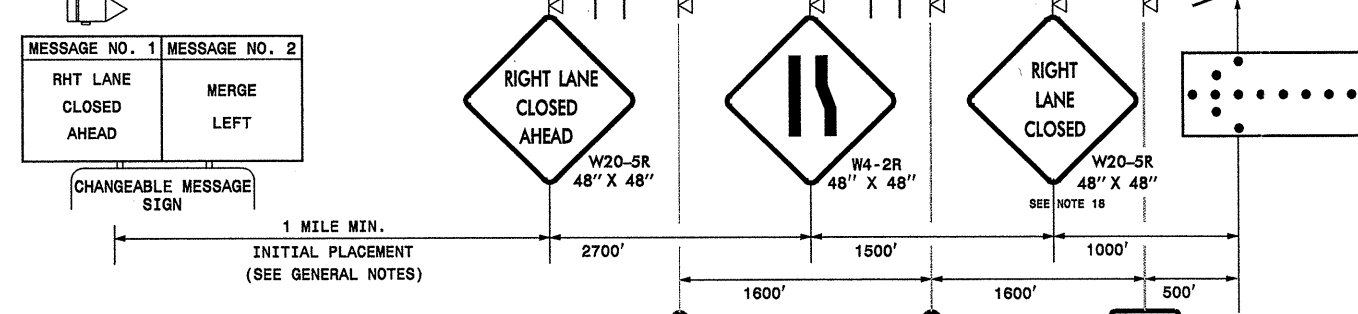
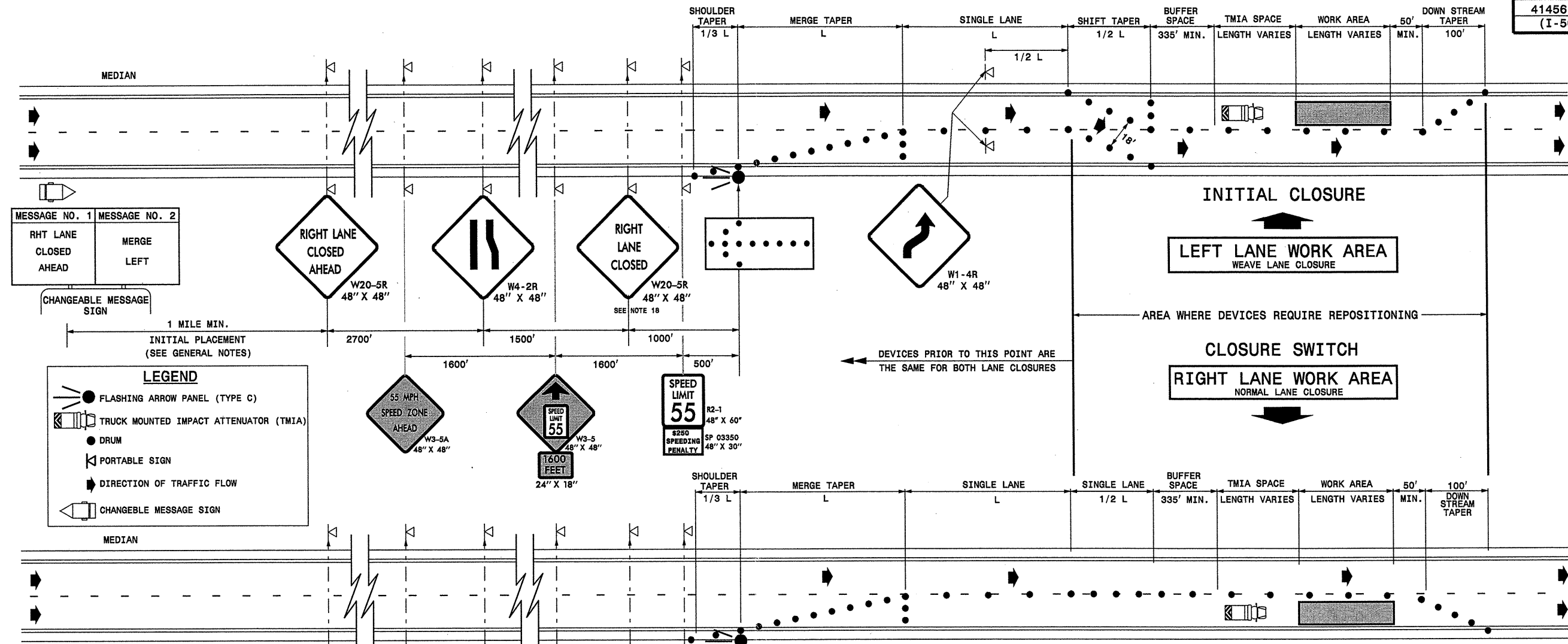
SHEET 2 OF 2
700D03

PROJECT NO.	SHEET NO.
I-5005A (41456.3.GV1)	11

POLYUREA AND PAINT QUANTITIES

PROJECT NO	COUNTY	MAP NO	ROUTE	DESCRIPTION	4405000000-E	4415000000-E	4420000000-N	4430000000-E	4480000000-N	4810000000-E		4847000000-E		4847100000-E		4847200000-E	4847200000-N	4900000000-N	4905000000-N	4890000000-E
					PORTABLE WORK ZONE SIGN	FLASHING ARROW PANELS, TYPE C	CHANGEABLE MESSAGE SIGNS	DRUMS	TRUCK MTD IMP ATTN 60 MPH	4" WHITE PAINT	4" YELLOW PAINT	4" WHITE POLYUREA LINES, STANDARD BEADS	4" YELLOW POLYUREA LINES, STANDARD BEADS	6" WHITE POLYUREA LINES, STANDARD BEADS	6" YELLOW POLYUREA LINES, STANDARD BEADS	12" WHITE POLYUREA LINES, STANDARD BEADS	POLYUREA STR ARROW, STANDARD BEADS	PERMANENT RAISED PAVEMENT MARKERS	SNOW PLOWABLE MARKERS (CRYSTAL & RED)	EPOXY 6" BLACK
					SF	EA	EA	EA	EA	LF	LF	LF	LF	LF	LF	EA	EA	EA	EA	LF
41456.3.GV1	HENDERSON	1	I-26 EAST	FROM MM 40 TO MM 43.2	2,056	4	4	800	4	23,470	17,050			22,270	17,050	1,200	6	274	274	4,230
		2	I-26 EAST	FROM MM 43.2 TO MM 50.3						49,410	37,400			47,310	37,400	2,100	12	573	573	9,380
		3	I-26 WEST	FROM MM 43.2 TO MM 50.3						50,550	37,470			48,450	37,470	2,100	12	574	574	9,380
		4	I-26 WEST	FROM MM 40 TO MM 43.2						22,877	16,987			21,677	16,987	1,200	12	272	272	4,230
		5	EASTBOUND ACCESS RAMP	FROM NC280 TO I-26						1,019	1,019	1,019	1,019							
		6	EASTBOUND EXIT RAMP	FROM I-26 TO REST AREA						1,060	1,060	1,060	1,060							
		7	EASTBOUND ACCESS RAMP	FROM REST AREA TO I-26						1,335	1,335	1,335	1,335							
		8	EASTBOUND EXIT RAMP	FROM I-26 TO US25 AT MM 44						1,488	1,488	1,488	1,488							
		9	EASTBOUND ACCESS RAMP	FROM US25 AT MM 44 TO I-26						1,007	1,007	1,007	1,007							
		10	EASTBOUND EXIT RAMP	FROM I-26 TO WEIGH STATION						300	300	300	300							
		11	EASTBOUND ACCESS RAMP	FROM WEIGH STATION TO I-26						300	300	300	300							
		12	EASTBOUND EXIT RAMP	FROM I-26 TO US64 WEST						857	857	857	857							
		13	EASTBOUND EXIT RAMP	FROM I-26 TO US64 EAST						1,000	1,000	1,000	1,000							
		14	EASTBOUND ACCESS RAMP	FROM US64 EAST TO I-26						788	788	788	788							
		15	WESTBOUND EXIT RAMP	FROM I-26 TO US64 EAST						650	650	650	650							
		16	WESTBOUND EXIT RAMP	FROM I-26 TO US64 WEST						1,000	1,000	1,000	1,000							
		17	WESTBOUND ACCESS RAMP	FROM US64 WEST TO I-26						685	685	685	685							
		18	WESTBOUND EXIT RAMP	FROM I-26 TO WEIGH STATION						300	300	300	300							
		19	WESTBOUND ACCESS RAMP	FROM WEIGH STATION TO I-26						300	300	300	300							
		20	WESTBOUND EXIT RAMP	FROM I-26 TO US25 AT MM 44						1,287	1,287	1,287	1,287							
		21	WESTBOUND ACCESS RAMP	FROM US25 AT MM 44 TO I-26						943	943	943	943							
		22	WESTBOUND EXIT RAMP	FROM I-26 TO REST AREA						825	825	825	825							
		23	WESTBOUND ACCESS RAMP	FROM REST AREA TO I-26						1,425	1,425	1,425	1,425							
		24	WESTBOUND EXIT RAMP	FROM I-26 TO NC280						1,378	1,378	1,378	1,378							
	BUNCOMBE	25	I-26 EAST	FROM MM 37.1 TO MM 40						20,000	15,315			20,000	15,315	1,100		255	255	3830
		26	I-26 WEST	FROM MM 37.1 TO MM 40						20,000	15,315			20,000	15,315	1,100		255	255	3830
		27	EASTBOUND EXIT RAMP	FROM I-26 TO NC280						1,400	1,400	1,400	1,400							
		28	WESTBOUND ACCESS RAMP	FROM NC280 TO I-26						700	700	700	700			3				
TOTAL FOR PROJECT 41456.3.GV1					2,056	4	4	800	4	206,354	159,584	20,047	20,047	179,707	139,537	8,800	45	2,203	2,203	34,880
										365,938		40,094		319,244						
GRAND TOTAL					2,056	4	4	800	4	206,354	159,584	20,047	20,047	179,707	139,537	8,800	45	2,203	2,203	34,880
										365,938		40,094		319,244						

Note: Contrast Epoxy Pavement Marking may be needed.
Install when directed by the Engineer.



- GENERAL NOTES**
- WEAVE LANE CLOSURES ARE TO BE USED ONLY ON DIVIDED, CONTROLLED ACCESS ROADWAYS, WITH POSTED SPEED LIMITS OF 55 MPH OR GREATER. FLASHING ARROW PANELS SHALL BE PLACED ON THE SHOULDER (PAVED OR UNPAVED). THE LOCATION OF THE ARROW PANEL SHALL MEET THE REQUIREMENTS FOR STOPPING SIGHT DISTANCE. LANE CLOSURES SHALL BE EXTENDED IF NEEDED, WITHIN THE BUFFER SPACE SUCH THAT STOPPING SIGHT DISTANCE TO THE BEGINNING OF THE LANE CLOSURE OR FLASHING ARROW PANEL IS MET. SEE ROADWAY STANDARD DRAWING (RSD) 1101.11 SHEET 2 FOR STOPPING SIGHT DISTANCE & BUFFER SPACE TABLES.
 - THE MAXIMUM SPACING OF DRUMS IN TAPERS SHALL BE EQUAL IN FEET TO THE POSTED SPEED LIMIT. THE MAXIMUM SPACING OF DRUMS ALONG THE BUFFER SPACE, AND WORK AREA, SHALL BE EQUAL IN FEET TO (2) TIMES THE POSTED SPEED LIMIT.
 - SEE RSD 1101.11 SHEETS 1 & 4 FOR VALUES OF "L" AND SIGN SPACING DISTANCES.
 - SEE RSD 1101.02 SHEETS 6 & 7 FOR TREATMENT OF LANE CLOSURES THRU INTERCHANGES.

- GENERAL NOTES (continued)**
- LANE CLOSURES SHALL BE INSTALLED WITH THE TRAFFIC FLOW, BEGINNING WITH DEVICES ON THE UPSTREAM SIDE OF TRAFFIC. LANE CLOSURES SHALL BE REMOVED AGAINST THE TRAFFIC FLOW, BEGINNING WITH DEVICES ON THE DOWNSTREAM SIDE OF TRAFFIC.
 - LANE CLOSURE SWITCHES TO BE PERFORMED BY A ROLLING ROADBLOCK OPERATION. SEE RSD 1101.07 SHEET 2 OF 2.
 - TRUCK MOUNTED IMPACT ATTENUATOR SHALL BE USED TO PROTECT THE WORK AREA. TMIA'S SHALL BE PLACED IN ADVANCE OF THE WORK AREA AT DISTANCES SPECIFIED BY THEIR MANUFACTURER.
 - SKINNY DRUMS MAY BE USED IN LIEU OF DRUMS EXCEPT IN TAPERS.
 - CHANGEABLE MESSAGE SIGN SHALL BE PLACED EITHER IN THE MEDIAN OR ON THE OUTSIDE OF THE TRAVELWAY AS DIRECTED BY THE ENGINEER. THE SIGN SHOULD INITIALLY BE LOCATED APPROXIMATELY 2 MILES IN ADVANCE OF THE MERGE TAPER. IF IT IS ANTICIPATED THAT TRAFFIC WILL BACK UP TO WHERE THE SIGN IS LOCATED, THE SIGN SHOULD THEN INITIALLY BE PLACED APPROXIMATELY 1 MILE PRIOR TO ANTICIPATED BACKUPS. BACKUPS SHOULD BE MONITORED SUCH THAT FOR FUTURE LANE CLOSURES, THE SIGN IS PLACED APPROXIMATELY 1 MILE PRIOR TO WHERE TRAFFIC IS ANTICIPATED TO BACK UP.
 - CHANGEABLE MESSAGE SIGN MESSAGES OTHER THAN THE ONES SHOWN MAY BE PORTRAYED AS DEEMED NECESSARY BY THE ENGINEER. NO MORE THAN 2 MESSAGE DISPLAYS SHOULD BE USED WITH ANY CYCLE.
 - THIS DRAWING IS INTENDED TO SHOW THE LOCATIONS AND SIGNING REQUIRED FOR A "TEMPORARY SPEED LIMIT" REDUCTION AND SPEEDING PENALTY ON A FREEWAY WHICH IS TO BE REDUCED TO 55 MPH. REFER TO THE RSD 1101.02 SHEET 3 OF 9 FOR ADDITIONAL LANE CLOSURE REQUIREMENTS AND GENERAL NOTES.

- GENERAL NOTES (continued)**
- EACH DIRECTION OF THE PROJECT IS TO BE EVALUATED FOR THE "TEMPORARY SPEED LIMIT" REDUCTION AND SPEEDING PENALTY. THIS DRAWING INTENTIONALLY HAS 1 DIRECTION SIGNED AS A REMINDER TO CAREFULLY CONSIDER WHETHER BOTH DIRECTIONS OF THE PROJECT NEED TO HAVE THE SPEED LIMIT REDUCED AND SPEEDING PENALTY ADDED.
 - IN ADDITION, FOR ACTIVE WORK AREAS THAT EXCEED 2 MILE IN LENGTH, AN EVALUATION IS TO BE MADE TO DETERMINE IF ADDITIONAL SIGNS ARE NEEDED TO SUPPLEMENT THE INITIAL ONES. PORTABLE MOUNTED W3-5 SIGNS WITH SPEED PENALTY SIGNS ARE TO BE PLACED ALONG ENTRANCE RAMPS LOCATED WITHIN THE ACTIVE WORK AREA.
 - THE "TEMPORARY SPEED LIMIT" REDUCTION AND SPEEDING PENALTY ARE ONLY IN EFFECT WHEN WORKERS ARE PRESENT WHILE A LANE CLOSURE IS IN PLACE. THE SPEED LIMIT AND SPEED PENALTY SIGNS ARE TO BE REMOVED WHEN THIS CONDITION DOES NOT EXIST. OTHER PERTINENT SIGNS MAY BE DISPLAYED AT THE DIRECTION OF THE ENGINEER IN COORDINATION WITH THE WORK ZONE TRAFFIC CONTROL UNIT (919-250-4159). AT THE COMPLETION OF THE PROJECT, THE ENGINEER SHALL NOTIFY THE REGIONAL TRAFFIC ENGINEER TO RESCIND THE ORDINANCE.
 - IF A LANE CLOSURE REMAINS INSTALLED WHILE WORKERS ARE NOT PRESENT, AN ADVISORY SPEED PLAQUE MAY BE ADDED TO THE LAST "RIGHT LANE CLOSED" SIGN.
 - WHEN "TEMPORARY SPEED LIMIT" REDUCTIONS ARE IN EFFECT, THE CONTRACTOR IS TO COVER ANY EXISTING SPEED LIMIT SIGNS LOCATED WITHIN THE ACTIVE WORK AREA THAT CONFLICT WITH THE "TEMPORARY SPEED LIMIT" REDUCTION.
 - THE \$250 SPEEDING PENALTY APPLIES FOR ALL PROJECTS THAT QUALIFY FOR A "TEMPORARY SPEED LIMIT" REDUCTION.

APPROVED: _____ DATE: _____

SEAL:

LANE CLOSURES FOR DIVIDED ROADWAYS WITH TEMPORARY SPEED LIMIT REDUCTION AND SPEEDING PENALTY

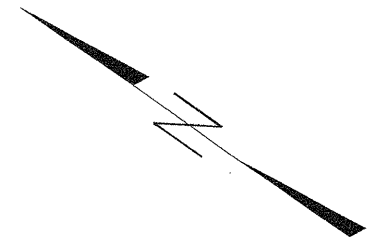
SCALE: NONE	REVISIONS
DATE: 07-07	01-08
DWG. BY: PS	
DESIGN BY: CL	
REVIEWED BY: CL	

CHAD L. LANFORD
ENGINEER IN CHARGE
STATE OF NORTH CAROLINA

23-JAN-2008 12:40 \\dot\dfsroot\groups-wz\ccc\design\group4\resur-facing\resur-facing2007\d\w4\c20200c202002-414563gvl&2_henderson.j+5005a&b-1-26-1-5005speedingpenalty\c20200-414563gvl-10mph-10mca.dgn

**STATE OF NORTH CAROLINA
DEPARTMENT OF TRANSPORTATION**

**SIGNING PLANS
HENDERSON COUNTY**

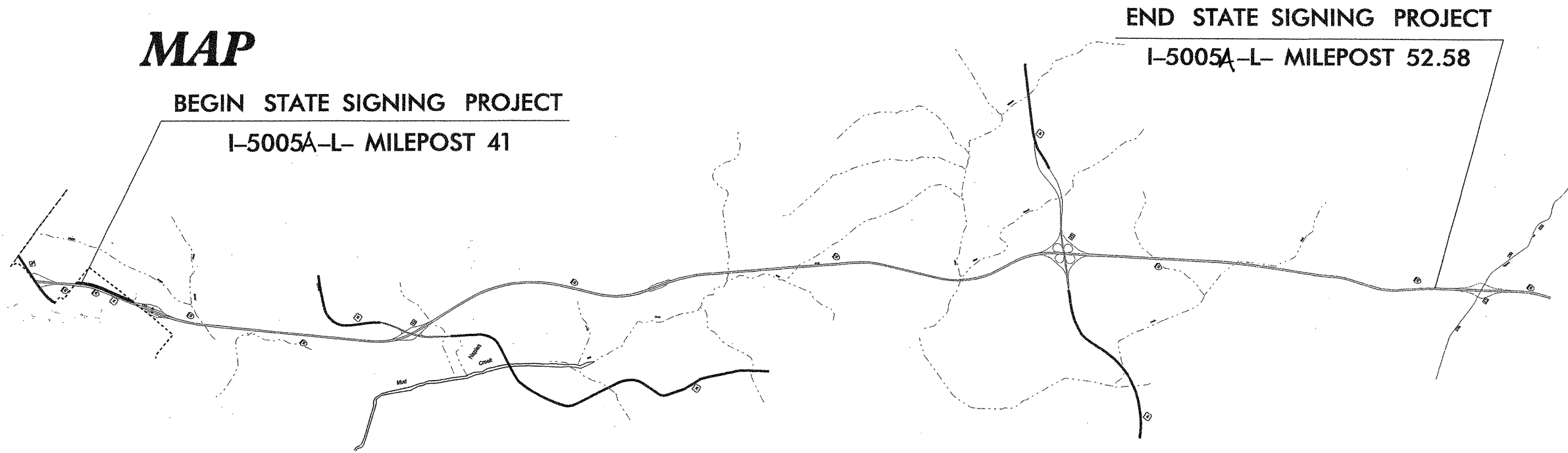


LOCATION: I-26 FROM THE BUNCOMBE COUNTY LINE TO SR 1783 (MILEPOST 53)

T.I.P.: I-5005A

CONTRACT: C202001

MAP



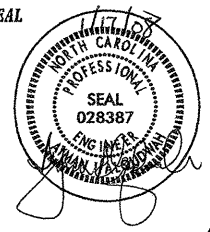
INDEX

SHEET NO.	DESCRIPTION
1	TITLE SHEET
2	SUMMARY OF QUANTITIES & NOTES
3	SIGN MOUNTING DETAILS
4-6	GROUND MOUNTED SIGN SUPPORT
7	SUPPORT CHART
8-11	TYPE "A" SIGNS
12	TYPE "E" SIGNS
13-16	EXISTING/PROPOSED SIGN LOCATION


PLAN PREPARED BY: N.C.D.O.T. SIGNING SECTION

RON KING, P.E. SIGNING ENGINEER
 AYMAN ALQUDWAH, P.E. SIGNING PROJECT ENGINEER
 JOSE MARTINEZ SIGNING PROJECT DESIGN ENGINEER
 ROSI HENNEIN SIGNING DESIGN TECHNICIAN

SEAL



SIGNS SUMMARY OF QUANTITIES

TIP NO. L-5005 A	SHEET NO. SIGN-2
APPROVED: <i>[Signature]</i>	
DATE: 7/23/07	
SEAL	
	

ITEM NO.		ITEM DESCRIPTION	QUANTITY	UNIT
DESC. NO.	SECT. NO.			
0001000000	800	MOBILIZATION.....		L.S.
4025000000	901	CONTRACTOR FURNISHED, TYPE A SIGN.....	2245.1	S.F.
4025000000	901	CONTRACTOR FURNISHED, TYPE B SIGN.....		S.F.
4025000000	901	CONTRACTOR FURNISHED, TYPE D SIGN.....		S.F.
4025000000	901	CONTRACTOR FURNISHED, TYPE E SIGN.....	97	S.F.
4025000000	901	CONTRACTOR FURNISHED, TYPE F SIGN.....		S.F.
4025000000	901	CONTRACTOR FURNISHED, OVERLAYS SIGN.....		S.F.
4025000000	901	CONTRACTOR FURNISHED, MILEMARKER SIGN.....		S.F.
4048000000	902	REINFORCED CONCRETE SIGN FOUNDATION.....	1	C.Y.
4060000000	903	SUPPORTS, BREAKAWAY STEEL BEAM.....	338	L.B.
4066000000	903	SUPPORTS, SIMPLE STEEL BEAM.....		L.B.
4072000000	903	SUPPORTS, 3 LB STEEL U-CHANNEL.....	186	L.F.
4078000000	903	SUPPORTS, 2 LB STEEL U-CHANNEL.....		EA.
4079000000	903	SUPPORTS, BARRIER (SMALL).....		EA.
4080000000	903	SUPPORTS, BARRIER (LARGE).....		EA.
4080200000	903	SUPPORTS, STEEL SQUARE TUBE.....		L.F.
4082000000	903	SUPPORTS, WOOD.....		L.F.
4096000000	904	SIGN ERECTION, TYPE D.....		EA.
4102000000	904	SIGN ERECTION, TYPE E.....	5	EA.
4108000000	904	SIGN ERECTION, TYPE F.....		EA.
4109000000	904	SIGN ERECTION, TYPE A (OVERHEAD).....	2	EA.
4109000000	904	SIGN ERECTION, TYPE B (OVERHEAD).....		EA.
4110000000	904	SIGN ERECTION, TYPE A (GROUND MOUNTED).....	14	EA.
4110000000	904	SIGN ERECTION, TYPE B (GROUND MOUNTED).....		EA.
4114000000	904	SIGN ERECTION, MILEMARKERS.....		EA.
4115000000	904	SIGN ERECTION, OVERLAY (OVERHEAD).....		EA.
4116000000	904	SIGN ERECTION, OVERLAY (GROUND MOUNTED).....		EA.
4116100000	904	SIGN ERECTION, RELOCATE SIGN TYPE A (OVERHEAD).....		EA.
4116100000	904	SIGN ERECTION, RELOCATE SIGN TYPE B(OVERHEAD).....		EA.
4116100000	904	SIGN ERECTION, RELOCATE SIGN TYPE A (GROUND MOUNTED).....		EA.
4116100000	904	SIGN ERECTION, RELOCATE SIGN TYPE B (GROUND MOUNTED).....		EA.
4116100000	904	SIGN ERECTION, RELOCATE SIGN TYPE D.....		EA.
4116100000	904	SIGN ERECTION, RELOCATE SIGN TYPE E.....		EA.
4116100000	904	SIGN ERECTION, RELOCATE SIGN TYPE F.....		EA.
4116100000	904	SIGN ERECTION, RELOCATE SIGN MILEMARKERS.....		EA.
4116200000	904	SIGN ERECTION, REPOSITION OVERHEAD.....		EA.
4116300000	904	SIGN ERECTION, LOGO TO PANEL.....		EA.
4116400000	904	SIGN ERECTION, LOGO TRAILBLAZER.....		EA.
4116500000	904	SIGN ERECTION, WALKWAY.....		L.F.
4132000000	907	STOCKPILE SUPPORT, STEEL BEAM.....		EA.
4138000000	907	DISPOSAL OF SUPPORT, STEEL BEAM.....		EA.
4140000000	907	STOCKPILE SUPPORT, WOOD.....		EA.
4141000000	907	DISPOSAL OF SUPPORT, WOOD.....		EA.
4142000000	907	STOCKPILE SUPPORT, OVERHEAD STRUCTURE.....		EA.
4143000000	907	DISPOSAL OF SUPPORT, OVERHEAD STRUCTURE.....		EA.
4148000000	907	STOCKPILE SIGN SYSTEM, OVERHEAD.....		EA.
4149000000	907	DISPOSAL OF SIGN SYSTEM, OVERHEAD.....		EA.
4151000000	907	STOCKPILE SIGN SYSTEM, STEEL BEAM.....		EA.
4152000000	907	DISPOSAL OF SIGN SYSTEM, STEEL BEAM.....		EA.
4154000000	907	STOCKPILE SIGN SYSTEM, U-CHANNEL.....		EA.
4155000000	907	DISPOSAL OF SIGN SYSTEM, U-CHANNEL.....	5	EA.
4157000000	907	STOCKPILE SIGN SYSTEM, WOOD.....		EA.
4158000000	907	DISPOSAL OF SIGN SYSTEM, WOOD.....	1	EA.
4186000000	907	STOCKPILE SUPPORT, U-CHANNEL.....		EA.

ITEM NO.		ITEM DESCRIPTION	QUANTITY	UNIT
DESC. NO.	SECT. NO.			
4192000000	907	DISPOSAL OF SUPPORT, U-CHANNEL.....		EA.
4192000000	907	STOCKPILE SIGN, A OR B (OVERHEAD).....		EA.
4228000000	907	DISPOSAL OF SIGN, A OR B (OVERHEAD).....	2	EA.
4234000000	907	STOCKPILE SIGN, A OR B (GROUND MOUNTED).....		EA.
4236000000	907	DISPOSAL OF SIGN, A OR B (GROUND MOUNTED).....	13	EA.
4236000000	907	STOCKPILE SIGN, D, E OR F.....		EA.
4237000000	907	DISPOSAL OF SIGN, D, E OR F.....		EA.
4238000000	907	STOCKPILE SIGN, MILEMARKERS.....		EA.
4237500000	907	DISPOSAL OF SIGN, MILEMARKERS.....		EA.

Pay Item Notes:

1	DISPOSAL OF SIGN SYSTEM, U-CHANNEL
2	DISPOSAL OF SIGN, A OR B (GROUND MOUNTED)
3	DISPOSAL OF SIGN SYSTEM, WOOD
4	DISPOSAL OF SIGN, A OR B (OVERHEAD)

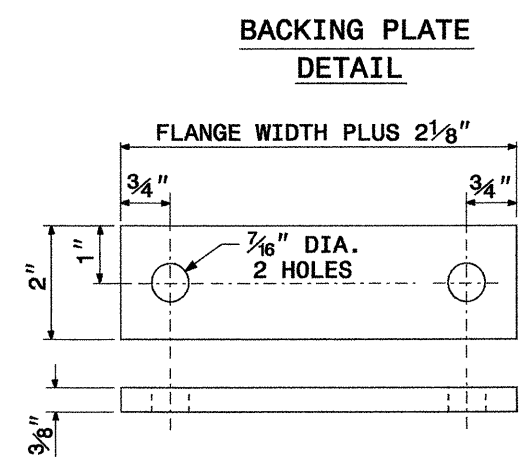
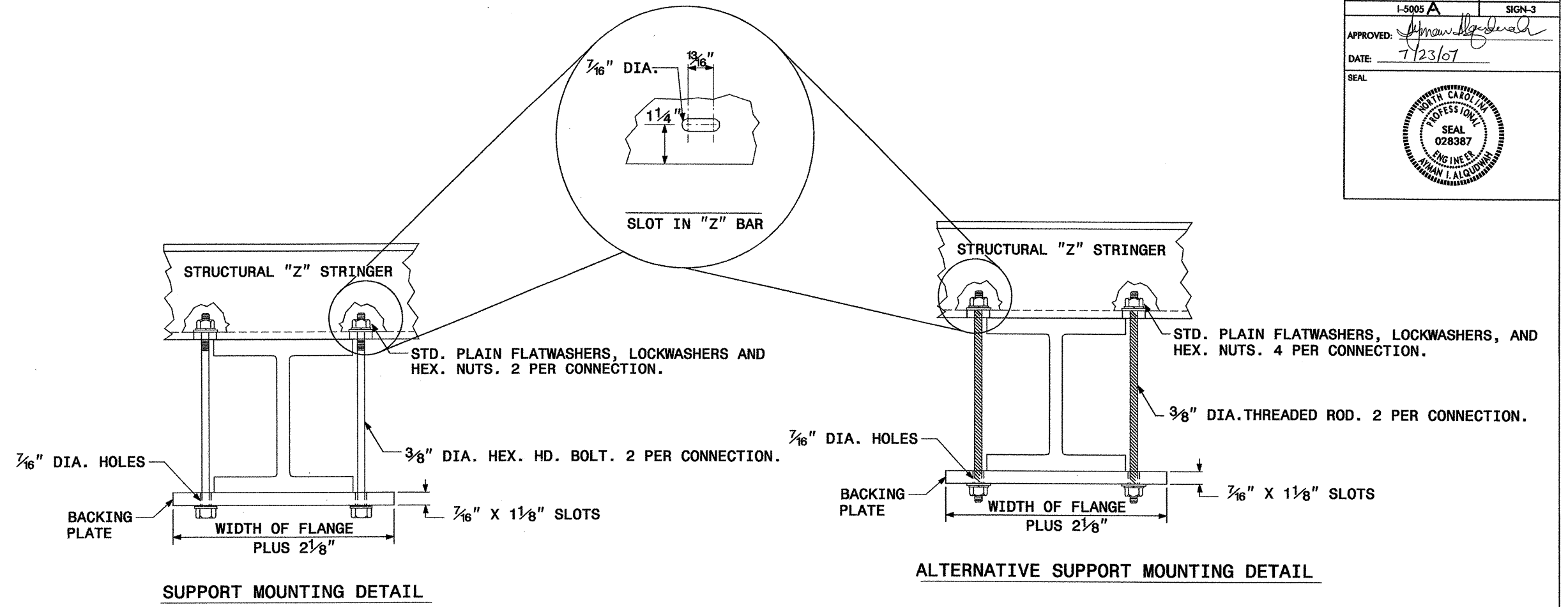
General Notes:

- . SIGNS FURNISHED BY CONTRACTOR
- . ALL TYPE 'D' SIGNS SHALL BE MOUNTED ON TWO U-CHANNEL POSTS UNLESS OTHERWISE INDICATED ON THE PLANS.
- . IF REMOVAL OR RELOCATION OF SIGNS ON PRIVATE STREET (NON-STATE MAINTAINED) IS REQUIRED DUE TO CONSTRUCTION, THE CONTRACTOR SHALL INFORM THE ENGINEER. THE WORK WILL BE COMPLETED BY OTHERS.
- . SIGNING PLANS DO NOT INCLUDE TEMPORARY CONSTRUCTION SIGNING OR PAVEMENT MARKINGS. SEE TRAFFIC CONTROL PLANS.
- . WHEN NOT STATIONED OR DIMENSIONED ON PLANS, ALL 'E' AND 'F' SIGNS SHALL BE FIELD LOCATED BY THE ENGINEER
- . ALL EXISTING SIGNS ON "U" CHANNEL POST WITHIN THE PROJECT LIMITS SHALL BE REMOVED AND DISPOSED OF UNLESS OTHERWISE NOTED ON PLANS.
- . WHEN EXISTING SIGNS ARE REMOVED AND INSTALLED ON NEW SUPPORTS, THE RE-ERECTION SHALL IMMEDIATELY FOLLOW THE REMOVAL.
- . THE BACKGROUND FOR TYPE E & F SIGNS SHALL BE TYPE III REFLECTIVE SHEETING.
- . THE CONTRACTOR SHALL BE REQUIRED TO SUBMIT TO THE N.C.D.O.T. FOR APPROVAL, DETAIL DRAWINGS OF LUMINAIRE RETRIEVAL SYSTEM MOUNTING ON OHS ASSEMBLY.
- . THE CONTRACTOR SHALL USE LUMINAIRE RETRIEVAL SYSTEM ON ALL OVERHEAD STRUCTURES. WALKWAY AND HANDRAIL IS NOT REQUIRED.
- . INSTALLATION OF LUMINAIRE RETRIEVAL SYSTEM SHALL ALLOW LUMINAIRE MAINTENANCE FROM THE SHOULDER WITHOUT THE NEED FOR LANE CLOSURE. THE DRIVE HANDLE OF THE LUMINAIRE RETRIEVAL SYSTEM SHALL BE LOCATED A MINIMUM OF 0.92M (3') FROM THE RIGHT EDGE OF THE SHOULDER AWAY FROM THE ROADWAY TRAFFIC.
- . THE CONTRACTOR SHALL ENSURE THAT COORDINATION IS ESTABLISHED BETWEEN THE OHS ASSEMBLY AND LUMINAIRE RETRIEVAL SYSTEM FABRICATORS SO THAT A FULLY FUNCTIONAL SIGN AND LIGHTING SYSTEM IS INSTALLED. THE CONTRACTOR SHALL BE FULLY RESPONSIBLE FOR ANY OHS ASSEMBLY AND LUMINAIRE RETRIEVAL SYSTEM INCOMPATIBILITIES, OR INSTALLATION OF A LIGHTING SYSTEM NOT FUNCTIONING TO ITS INTENDED PURPOSE.
- . DO NOT BEGIN FABRICATION FOR TYPES A & B SIGNS MOUNTED ON OVERHEAD STRUCTURES OR STEEL SUPPORTS UNTIL "S" DIMENSIONS HAVE BEEN FIELD VERIFIED.
- . SEE ROADWAY PLANS FOR GUARDGUIDE RAIL DETAILS.

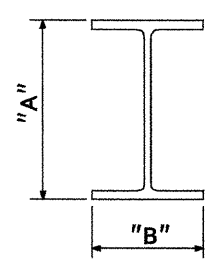
ROADWAY STANDARD DRAWINGS
APPLICABLE TO THESE SIGNING PLANS

901.10	901.50	904.10
901.20	901.70	904.20
901.30	901.80	904.30
901.40	903.10	904.50

**SUMMARY OF QUANTITIES
&
NOTES**

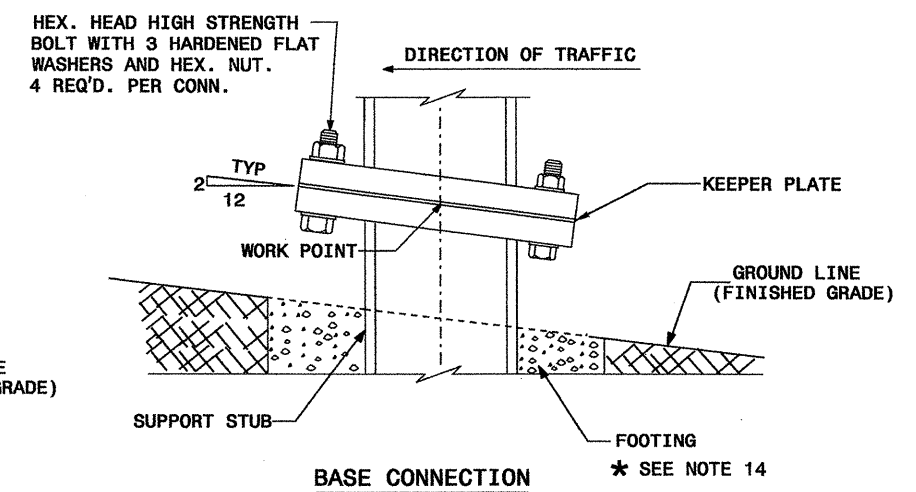
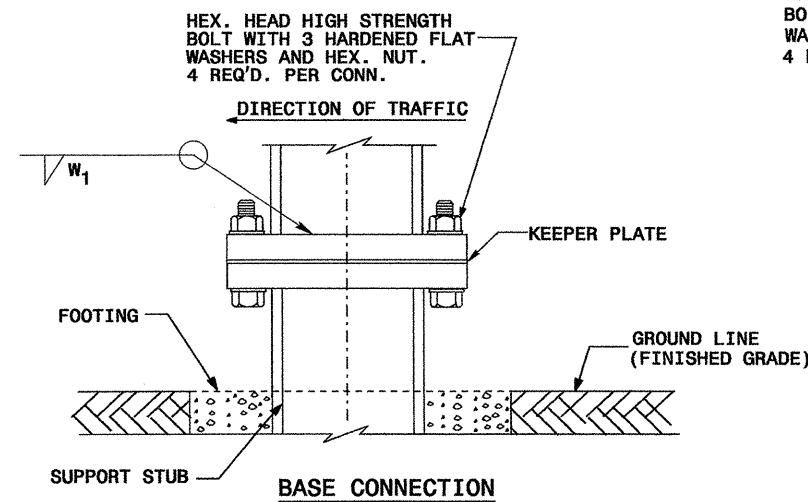
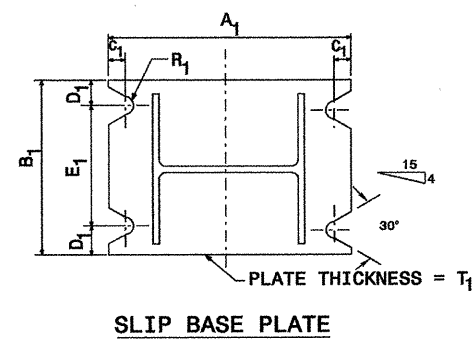
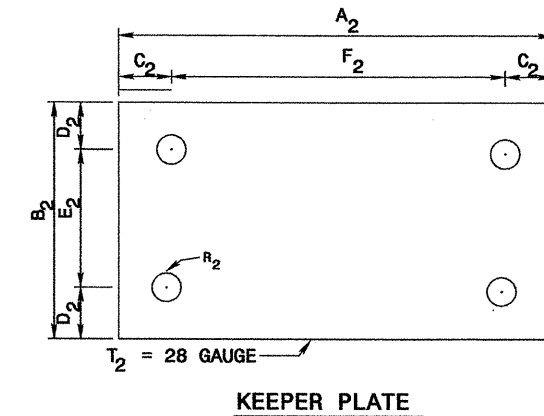
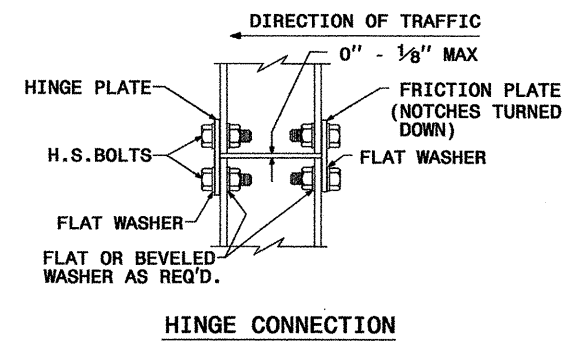
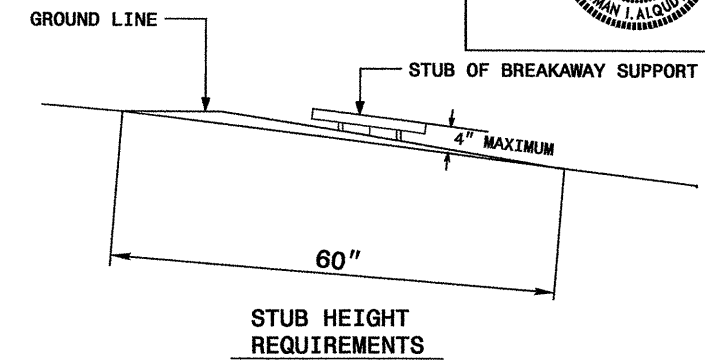
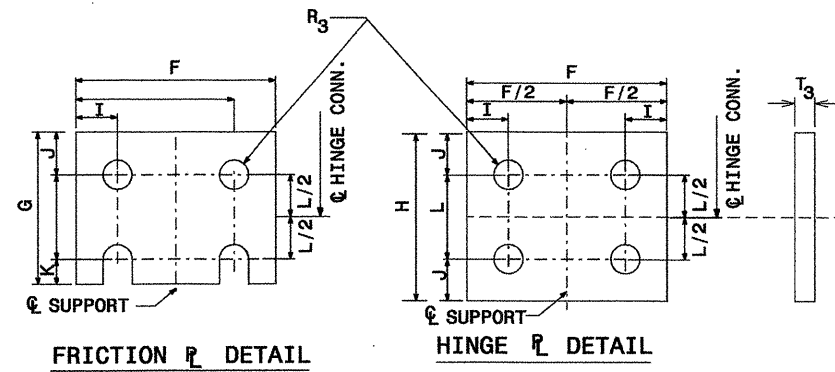
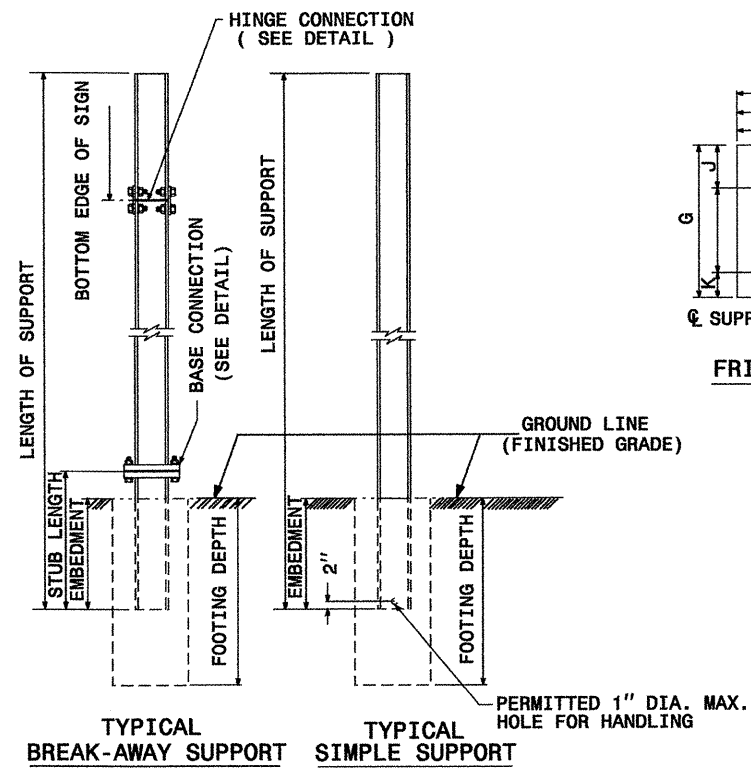


1. THE SUPPORT MOUNTING DETAIL SHOWS A "W" OR "S" BEAM. THIS DETAIL IS ALSO USED FOR MOUNTING SIGNS TO WOOD OR SQUARE TUBE SUPPORTS.
2. USE GALVANIZED STEEL FOR BACKING PLATES AND MOUNTING BOLTS IN ACCORDANCE WITH ASTM A123.
3. SEE NCDOT STANDARD SPECIFICATIONS FOR ROADS AND STRUCTURES FOR TYPE OF MATERIAL TO BE USED FOR SIGN HANGER ASSEMBLIES AND SUPPORTS.
4. USE GALVANIZED STEEL FOR MOUNTING BOLTS AND THREADED RODS IN COMPLIANCE WITH ASTM A307 AND ASTM A153.




SIGN SUPPORTS SECTION DIMENSIONS

SECTION	A	B
S3 X 5.7	3"	2 3/8"
S4 X 7.7	4"	2 5/8"
W6 X 9	6"	4"
W6 X 12	6"	4"
W6 X 16	6 1/4"	4"
W8 X 18	8 1/8"	5 1/4"
W8 X 21	8 1/4"	5 1/4"
W10 X 22	10 1/8"	5 3/4"
W10 X 26	10 3/8"	5 3/4"
W12 X 26	12 1/4"	6 1/2"
W14 X 30	13 7/8"	6 3/4"
W16 X 31	15 1/8"	5 1/2"
W18 X 35	17 3/4"	6"
W18 X 40	17 7/8"	6"
W21 X 44	20 5/8"	6 1/2"

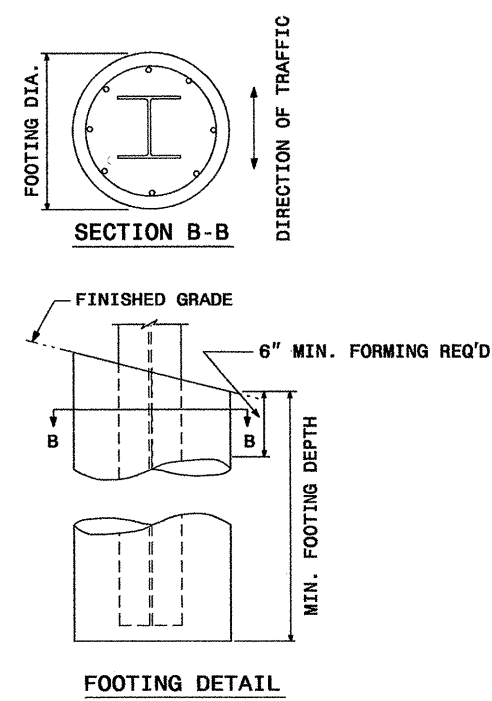
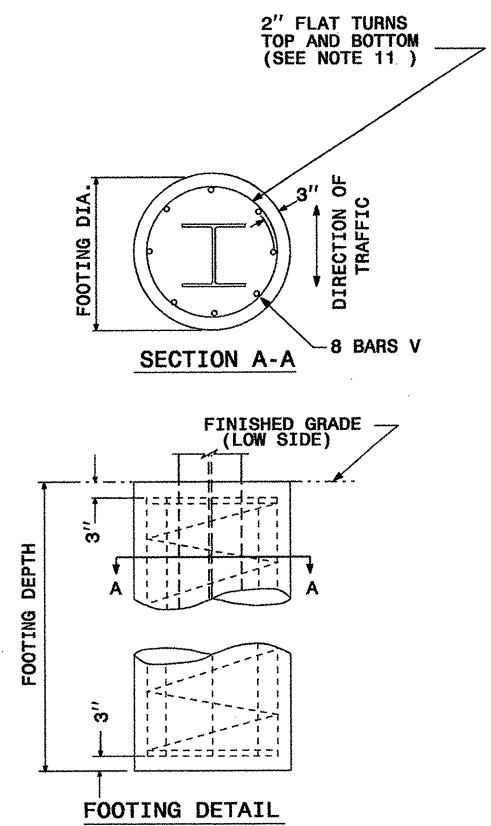


SEE SHEET SIGN-7 FOR DIMENSIONS.
SEE SHEET SIGN-8 FOR NOTES.

GROUND MOUNTED SIGN SUPPORT

TIP NO. I-5005 A	SHEET NO. SIGN-5
APPROVED: <i>[Signature]</i>	
DATE: 7/23/07	
SEAL	
	


BEAM SHAPE	SLIP BASE PLATE DATA										KEEPER PLATE DATA						HINGE CONNECTION DATA							BREAK AWAY SUPPORT WEIGHT CONSTANT LBS.				
	BOLT SIZE	A ₁	B ₁	C ₁	D ₁	E ₁	T ₁	W ₁	R ₁	A ₂	B ₂	C ₂	D ₂	E ₂	F ₂	R ₂	T ₂	BOLT SIZE	F	G	H	I	J		K	L	R ₃	T ₃
S3X5.7	1/2"DIA. X 3"	7"	4"	1"	3/4"	2 1/2"	1"	3/8"	9/32"	7"	4"	1"	3/4"	2 1/2"	5"	9/32"	28 GAUGE	1/2"DIA. X 1 1/4"	2 1/4"	3 1/2"	4"	1 1/2"	1"	1 1/2"	2"	9/32"	3/8"	18
S4X7.7	1/2"DIA. X 3"	8"	4"	1"	3/4"	2 1/2"	1"	3/8"	9/32"	8"	4"	1"	3/4"	2 1/2"	6"	9/32"	28 GAUGE	1/2"DIA. X 1 1/4"	2 5/8"	3 1/2"	4"	1 1/2"	1"	1 1/2"	2"	9/32"	3/8"	20
W6X9	1/2"DIA. X 3"	10"	5"	1"	3/4"	3 1/2"	1"	3/8"	9/32"	10"	5"	1"	3/4"	3 1/2"	8"	9/32"	28 GAUGE	1/2"DIA. X 1 1/4"	4"	3 1/2"	4"	3/4"	1"	1 1/2"	2"	9/32"	3/8"	32
W6X12	5/8"DIA. X 3 3/4"	11"	5"	1 1/4"	7/8"	3 1/4"	1 1/4"	3/8"	1 1/32"	11"	5"	1 1/4"	7/8"	3 1/4"	8 1/2"	1 1/32"	28 GAUGE	5/8"DIA. X 2 1/4"	4"	4"	4 1/2"	3/4"	1 1/8"	5/8"	2 1/4"	1 1/32"	3/8"	43
W6X16	5/8"DIA. X 4 1/4"	12"	6"	1 1/4"	7/8"	4 1/4"	1 1/2"	3/8"	1 1/32"	12"	6"	1 1/4"	7/8"	4 1/4"	9 1/2"	1 1/32"	28 GAUGE	5/8"DIA. X 2 1/2"	4"	4"	4 1/2"	3/4"	1 1/8"	5/8"	2 1/4"	1 1/32"	1/2"	66
W8X18	5/8"DIA. X 4 1/4"	13 1/2"	6 1/2"	1 1/4"	7/8"	4 3/4"	1 1/2"	3/8"	1 1/32"	13 1/2"	6 1/2"	1 1/4"	7/8"	4 3/4"	11"	1 1/32"	28 GAUGE	5/8"DIA. X 2 1/2"	5 1/4"	4"	4 1/2"	1"	1 1/8"	5/8"	2 1/4"	1 1/32"	1/2"	81
W8X21	3/4"DIA. X 4 1/4"	14"	7"	1 1/2"	1"	5"	1 1/2"	3/8"	1 3/32"	14"	7"	1 1/2"	1"	5"	11"	1 3/32"	28 GAUGE	3/4"DIA. X 2 3/4"	5 1/4"	6"	7"	1"	1 3/4"	3/4"	3 1/2"	1 3/32"	1/2"	93
W10X22	3/4"DIA. X 4 1/4"	16"	8"	1 1/2"	1"	6"	1 1/2"	3/8"	1 3/32"	16"	8"	1 1/2"	1"	6"	13"	1 3/32"	28 GAUGE	3/4"DIA. X 2 3/4"	5 3/4"	6"	7"	1"	1 3/4"	3/4"	3 1/2"	1 3/32"	1/2"	119
W10X26	3/4"DIA. X 4 3/4"	16 1/2"	8"	1 1/2"	1"	6"	1 3/4"	3/8"	1 3/32"	16 1/2"	8"	1 1/2"	1"	6"	13 1/2"	1 3/32"	28 GAUGE	3/4"DIA. X 2 3/4"	5 3/4"	6"	7"	1"	1 3/4"	3/4"	3 1/2"	1 3/32"	5/8"	144
W12X26	3/4"DIA. X 4 3/4"	18 1/2"	9"	1 1/2"	1"	7"	1 3/4"	3/8"	1 3/32"	18 1/2"	9"	1 1/2"	1"	7"	15 1/2"	1 3/32"	28 GAUGE	3/4"DIA. X 2 3/4"	6 1/2"	6"	7"	1"	1 3/4"	3/4"	3 1/2"	1 3/32"	5/8"	180
W14X30	1"DIA. X 5 3/4"	22"	9"	2"	1 1/2"	6"	2"	1/2"	1 7/32"	22"	9"	2"	1 1/2"	6"	18"	1 7/32"	28 GAUGE	1"DIA. X 3"	6 3/4"	7"	8"	1 1/4"	2"	1"	4"	1 7/32"	5/8"	242
W16X31	1"DIA. X 5 3/4"	24"	9"	2"	1 1/2"	6"	2"	1/2"	1 7/32"	24"	9"	2"	1 1/2"	6"	20"	1 7/32"	28 GAUGE	1"DIA. X 3 1/4"	5 1/2"	7"	8"	1 1/4"	2"	1"	4"	1 7/32"	3/4"	263
W18X35	1"DIA. X 5 3/4"	25"	9"	2"	1 1/2"	6"	2"	1/2"	1 7/32"	25"	9"	2"	1 1/2"	6"	21"	1 7/32"	28 GAUGE	1"DIA. X 3 1/4"	6"	7"	8"	1 1/4"	2"	1"	4"	1 7/32"	3/4"	274
W18X40	1"DIA. X 6 1/4"	26"	9"	2"	1 1/2"	6"	2 1/4"	5/8"	1 7/32"	26"	9"	2"	1 1/2"	6"	22"	1 7/32"	28 GAUGE	1"DIA. X 3 3/4"	6"	7"	8"	1 1/4"	2"	1"	4"	1 7/32"	7/8"	321
W21X44	1"DIA. X 6 3/4"	29"	9"	2"	1 1/2"	6"	2 1/2"	5/8"	1 7/32"	29"	9"	2"	1 1/2"	6"	25"	1 7/32"	28 GAUGE	1"DIA. X 3 3/4"	6 1/2"	7"	8"	1 1/4"	2"	1"	4"	1 7/32"	7/8"	394



FOUNDATION DATA *		
FOOTING DIAMETER	REINFORCEMENT	SPIRAL BAR
1'	8 # 4 BARS	#3 BAR, 3" PITCH
1' 6"	8 # 6 BARS	#3 BAR, 3" PITCH
2'	8 # 7 BARS	#3 BAR, 3" PITCH
2' 6"	8 # 9 BARS	#3 BAR, 3" PITCH
3'	8 # 11 BARS	#3 BAR, 3" PITCH
3' 6"	8 # 12 BARS	#3 BAR, 3" PITCH
4'	8 # 14 BARS	#3 BAR, 3" PITCH

* FOUNDATION DIMENSIONS ARE SHOWN IN PLANS
SEE SHEET SIGN-8 FOR NOTES.

GROUND MOUNTED SIGN SUPPORT

TIP NO. I-5005 A	SHEET NO. SIGN-6
APPROVED: <i>[Signature]</i>	
DATE: 7/23/07	
SEAL	
	

NOTES:


- DESIGN CONFORMS WITH THE SPECIFICATIONS FOR THE DESIGN AND CONSTRUCTION OF STRUCTURAL SUPPORTS FOR HIGHWAY SIGNS - A.A.S.H.T.O.
- USE MATERIALS, FABRICATE AND ERECT SIGNS AND SUPPORTS THAT CONFORM TO THE NORTH CAROLINA DEPARTMENT OF TRANSPORTATION STANDARD SPECIFICATIONS FOR ROADS AND STRUCTURES.
- USE HIGH STRENGTH BOLTS, NUTS AND WASHERS THAT CONFORM TO A.S.T.M. A-325 AND THAT ARE GALVANIZED IN ACCORDANCE WITH A.S.T.M. A-153.
- USE BACKING PLATES, SLIP BASE PLATES, FRICTION PLATES, AND HINGE PLATES THAT CONFORM TO A.S.T.M. A-36 AND THAT ARE GALVANIZED IN ACCORDANCE WITH A.S.T.M. A-123 PRIOR TO GALVANIZING, GRIND SMOOTH ANY METAL PROJECTION BEYOND THE PLATE FACE. KEEPER PLATES SHALL BE MANUFACTURED FROM 28 GAUGE SHEET STEEL THAT CONFORMS TO A.S.T.M. A-36 AND IS GALVANIZED IN ACCORDANCE WITH A.S.T.M. A-123
- ASSEMBLE HINGE CONNECTIONS IN THE SHOP. SHOP TIGHTEN BOLTS BY USE OF EITHER A CALIBRATED POWER WRENCH OR A MANUAL TORQUE WRENCH. TIGHTEN EACH HINGE CONNECTION BOLT TO 1/3 PAST SNUG.
- BASE PLATES DETAILS ARE FOR INSTALLATIONS ON THE RIGHT SHOULDER AND IN GORE AREAS.
- ASSEMBLE UPPER SUPPORT TO STUB AS SHOWN IN DETAIL. SLIP BASE PLATES SHALL BE FILLET WELDED ONTO POSTS ALL AROUND THE STRUCTURAL SHAPE. ASSEMBLE IN EITHER SHOP OR FIELD. 28 GAUGE KEEPER PLATE IS PLACED BETWEEN SLIP BASE PLATES TO PREVENT BOLT SLIPPING. TIGHTEN BOLTS TO THE FOLLOWING PRESCRIBED TORQUE:

BOLT DIAMETER	TORQUE (LB. FT.)
1/2"	9
5/8"	22
3/4"	37
1"	48

COMPLETELY ASSEMBLE B/A POSTS PRIOR TO ERECTION. B/A POST TO BE SET IN ONE PIECE. AFTER SUPPORT HAS BEEN ERECTED AND THE CONCRETE FOOTINGS HAS CURED AT LEAST 48 HRS., CLEAN CONCRETE FROM BASE CONNECTION BOLTS THEN LOOSEN AND RETIGHTEN EACH BOLT IN A SYSTEMATIC ORDER TO THE PRESCRIBED TORQUE. DO NOT OVERTIGHTEN. BURR ALL BOLT THREADS OF BASE CONNECTIONS TO PREVENT LOOSENING.

- USE REINFORCED FOOTINGS WITH DIMENSIONS AS SHOWN IN PLANS. WHERE SOLID ROCK IS ENCOUNTERED, THE ENGINEER DIRECTS WHETHER TO PLACE THE FOOTING AT THE PRESCRIBED DEPTH OR EXTEND IT AT LEAST TWO FEET INTO THE ROCK. CONSTRUCT ALL FOOTINGS OF CLASS A CONCRETE.
- FORM TOP 6" OF FOOTINGS. ENGINEER APPROVES THE METHOD USED.
- THE FINAL FLAT TURN OF SPIRAL OR HOOPS NO. 3 OR LARGER PLACED 3" FROM TOP AND BOTTOM OF FOOTING MAY BE WELDED TO VERTICAL REINFORCING BARS. NO OTHER WELDING WILL BE PERMITTED.
- ELIMINATE HINGE CONNECTION FOR ALL SINGLE SUPPORT SIGNS.
- DETAIL IS FOR ONE DIRECTION BREAKAWAY. WHEN PLANS REQUIRE A TWO DIRECTION BREAKAWAY, TWO FRICTION PLATES SHALL BE USED IN LIEU OF ONE FRICTION PLATE AND ONE HINGE PLATE.
- SHAPE THE TOPS OF THE FOOTINGS TO CONFORM WITH FINISHED GROUND ELEVATIONS SUCH THAT WATER WILL NOT COLLECT AGAINST THE SUPPORTS.
- IF THE GROUNDWATER IS ENCOUNTERED AT AN DEPTH SHALLOWER THAN 7 FEET, THE SIGN FOUNDATION MUST BE REDESIGNED BASED UPON THE ACTUAL FIELD CONDITIONS. THE FOUNDATION DESIGN DOES NOT APPLY TO VERY SOFT OR LOOSE SOIL, MUCK, WEATHERED ROCK, OR HARD ROCK.

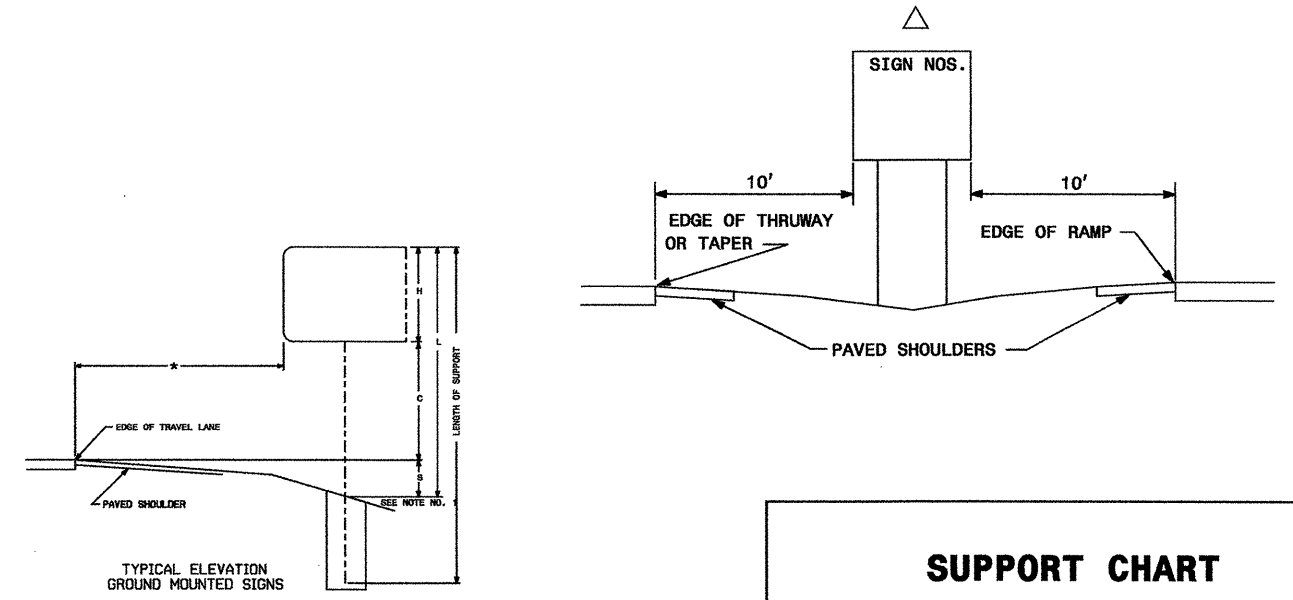
GROUND MOUNTED SIGN SUPPORT

TIP NO. I-5005 A	SHEET NO. SIGN-7
APPROVED: <i>[Signature]</i>	
DATE: 7/23/07	
SEAL	
	

SIGN NO.	SIGN TYPE	SIGN SIZE (in.)			ROADWAY STATION	NO. OF SUP.	BEAM SECTION	SUPPORT TYPE BA or S	ATTACH METHOD	MOUNTING METHOD	HORIZ. CLR.* (ft.)	LENGTH (ft)			LEFT SUPPORT (ft)			CENTER SUPPORT (ft)			RIGHT SUPPORT (ft)			FOOTING DIAMETER (ft.)	FOOTING DEPTH (ft.)	B/A SUPPORT WEIGHTS (lbs.)	SIMPLE SUPPORT WEIGHTS (lbs.)	REINF. FTGS. (c.y.)	FIELD VERIFIED SEE NOTE 2 (mm/dd/yy)
		w	x	h								SNS HT H	MTG HT C	EMBED-MENT	S	L	TOTAL LENGTH	S	L	TOTAL LENGTH	S	L	TOTAL LENGTH						
101	A	90	X	84	MM 46.07	2	S4x7.7	BA	N/A	N/A	30.00	7.00	7.00	4.5	1.00	15.00	19.50	0.00	0.00	0.00	0.50	14.50	19.00	1	5	337.06	0.00	0.29	
																							TOTAL	TOTAL	TOTAL				
																							337.06	0.00	0.29				
USE:																							338	0	1				

NOTES

- DIMENSION "S" REPRESENTS AN INCREASE (+), OR A DECREASE (-) IN POLE LENGTH, RELATIVE TO THE ELEVATION OF THE EDGE OF PAVEMENT.
- FIELD VERIFICATIONS SHALL BE REQUIRED FOR ALL SUPPORTS, SEE (*) ARTICLE 903-3. FABRICATORS SHALL BE AISC CERTIFIED IN CATEGORY 1, SEE (*) ARTICLE 1072-1. (*) = N.C.D.O.T. STANDARD SPECIFICATIONS FOR ROADS AND STRUCTURES
- PLAN LOCATIONS FOR EXISTING UTILITIES ARE BASED ON THE BEST AVAILABLE INFORMATION AND, THEREFORE MAY NOT BE PRECISELY ACCURATE. THEREFORE, IT IS INCUMBENT UPON THE CONTRACTOR TO DETERMINE THE EXACT LOCATION OF UTILITIES BEFORE BEGINNING WORK IN A LOCATION.



SIGN NUMBER: 801 TYPE: A BACKG COLOR: Green COPY COLOR: White
QUANTITY: 1
SIGN WIDTH: 96" HEIGHT: 60"
TOTAL AREA: 40.0 Sq.Ft.
BORDER TYPE: FLUSH RECESS: 0" WIDTH: 1.5" RADII: 8"
NO. Z BARS: 2 LENGTH: 88.0
DESIGN BY: J. MARTINEZ CHECKED BY: DIV: 14 DATE: May 07, 2007
PROJECT ID: I-5005
SYMBOL X Y WID HT
ARMED 57.8 9.4 18.8 30
MAT'L: 0.125" (3.2 mm) ALUMINUM

BORDER R=8" TH=1.5"

LETTER POSITIONS

Letter spacings are to start of next letter

Series/Size	Text Length
EM 2000	37
EM 2000	36.5

Spacing Factor is 1 unless specified otherwise NORTH CAROLINA D.O.T. SIGN DETAIL

SIGN NUMBER: 803,808 TYPE: A BACKG COLOR: Green COPY COLOR: White
QUANTITY: 2
SIGN WIDTH: 222" HEIGHT: 144"
TOTAL AREA: 222.0 Sq.Ft.
BORDER TYPE: FLUSH RECESS: 0" WIDTH: 2" RADII: 12"
NO. Z BARS: 0 LENGTH: 214.0
DESIGN BY: J. MARTINEZ CHECKED BY: DIV: 14 DATE: May 07, 2007
PROJECT ID: I-5005
SYMBOL X Y WID HT
M1_4 93 94.5 36 36
MAT'L: 0.125" (3.2 mm) ALUMINUM

BORDER R=12" TH=2"

LETTER POSITIONS

Letter spacings are to start of next letter

Series/Size	Text Length
EM 2000	189.1
EM 2000	113
E 2000	52.6

Spacing Factor is 1 unless specified otherwise NORTH CAROLINA D.O.T. SIGN DETAIL

SIGN NUMBER: 101, 802 TYPE: A BACKG COLOR: White COPY COLOR: Black
QUANTITY: 2
SIGN WIDTH: 90" HEIGHT: 84"
TOTAL AREA: 52.5 Sq.Ft.
BORDER TYPE: RECESSED RECESS: 0.75" WIDTH: 1.25" RADII: 3"
NO. Z BARS: 0 LENGTH: 82.0
DESIGN BY: J. MARTINEZ CHECKED BY: DIV: 14 DATE: Jul 19, 2007
PROJECT ID: I-5005
SYMBOL X Y WID HT
MAT'L: 0.125" (3.2 mm) ALUMINUM

BORDER R=3" TH=1.25" IN=0.75"

LETTER POSITIONS

Letter spacings are to start of next letter

Series/Size	Text Length
C 2000	68.7
C 2000	68.2
C 2000	55.4
C 2000	62.2
C 2000	72.2

Spacing Factor is 1 unless specified otherwise NORTH CAROLINA D.O.T. SIGN DETAIL

SIGN NUMBER: 804 TYPE: A BACKG COLOR: Blue COPY COLOR: White
QUANTITY: 1
SIGN WIDTH: 108" HEIGHT: 80"
TOTAL AREA: 45.0 Sq.Ft.
BORDER TYPE: FLUSH RECESS: 0" WIDTH: 2" RADII: 9"
NO. Z BARS: 2 LENGTH: 100.0
DESIGN BY: J. MARTINEZ CHECKED BY: DIV: 14 DATE: May 07, 2007
PROJECT ID: I-5005
SYMBOL X Y WID HT
MAT'L: 0.125" (3.2 mm) ALUMINUM


BORDER R=9" TH=2"

LETTER POSITIONS

Letter spacings are to start of next letter

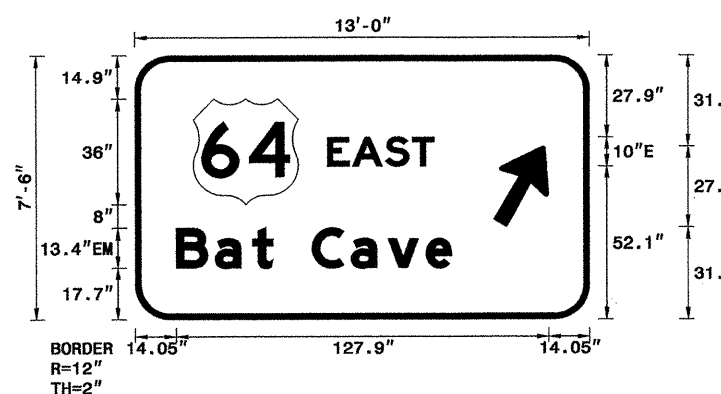
Series/Size	Text Length
D 2000	72.6
E 2000	84.5

Spacing Factor is 1 unless specified otherwise NORTH CAROLINA D.O.T. SIGN DETAIL

TIP NO. I-5005 A SHEET NO. SIGN-9
 APPROVED: *[Signature]*
 DATE: 7/23/07
 SEAL


SIGN NUMBER: 805 TYPE: A BACKG COLOR: Green COPY COLOR: White
 QUANTITY: 1
 SIGN WIDTH: 156" HEIGHT: 90"
 TOTAL AREA: 97.5 Sq.Ft.
 BORDER TYPE: FLUSH RECESS: 0" WIDTH: 2" RADII: 12"
 NO. Z BARS: 3 LENGTH: 148.0
 MAT'L: 0.125" (3.2 mm) ALUMINUM

DESIGN BY: J. MARTINEZ CHECKED BY: DIV: 14 DATE: May 07, 2007
 PROJECT ID: I-5005



BORDER R=12" TH=2"

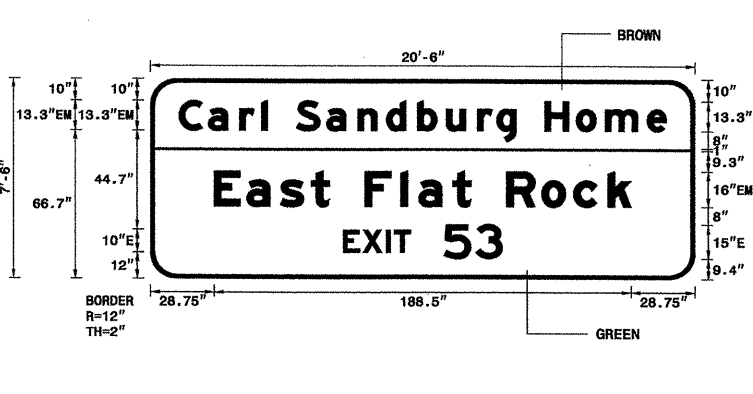
LETTER POSITIONS

Letter spacings are to start of next letter													Series/Size
													Text Length
	E	A	S	T									E 2000
66.1	8.6	11.3	9.2	7.5	53.3								36.6
	B	a	t		C	a	v	e					EM 2000
14.1	13.4	12.9	7	13.4	13.4	12.7	13	8.8	47.3				94.6

Spacing Factor is 1 unless specified otherwise NORTH CAROLINA D.O.T. SIGN DETAIL

SIGN NUMBER: 807 TYPE: A BACKG COLOR: Green/Brown COPY COLOR: White
 QUANTITY: 1
 SIGN WIDTH: 246" HEIGHT: 90"
 TOTAL AREA: 153.8 Sq.Ft.
 BORDER TYPE: FLUSH RECESS: 0" WIDTH: 2" RADII: 12"
 NO. Z BARS: 3 LENGTH: 238.0
 MAT'L: 0.125" (3.2 mm) ALUMINUM

DESIGN BY: J. MARTINEZ CHECKED BY: DIV: 14 DATE: May 07, 2007
 PROJECT ID: I-5005



BORDER R=12" TH=2"

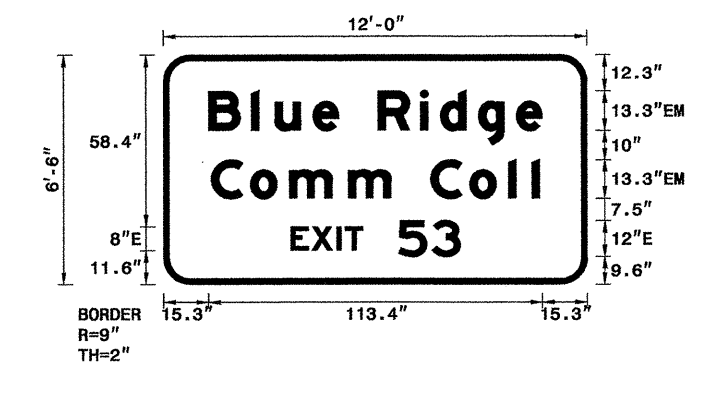
LETTER POSITIONS

Letter spacings are to start of next letter																		Series/Size		
																		Text Length		
	C	a	r	l		S	a	n	d	b	u	r	g		H	o	m	e	EM 2000	
12.8	13.3	14.1	9.9	2.7	13	13.7	14.1	12.9	14.1	12.9	14.1	8.7	8.8	13	14.1	13.2	8.8	8.8	12.8	220.4
	E	a	s	t		F	l	a	t		R	o	c	k						EM 2000
28.8	14.7	15.2	13.9	8.3	16	16.2	8.2	15.4	8.3	16	15.8	14.4	16.5	10.6	28.8					188.5
	E	X	I	T		5	3													E 2000
87	8.9	10.7	3.5	7.5	15	14.3	12.2	87												72

Spacing Factor is 1 unless specified otherwise NORTH CAROLINA D.O.T. SIGN DETAIL

SIGN NUMBER: 806 TYPE: A BACKG COLOR: Green COPY COLOR: White
 QUANTITY: 1
 SIGN WIDTH: 144" HEIGHT: 78"
 TOTAL AREA: 78.0 Sq.Ft.
 BORDER TYPE: FLUSH RECESS: 0" WIDTH: 2" RADII: 9"
 NO. Z BARS: 2 LENGTH: 136.0
 MAT'L: 0.125" (3.2 mm) ALUMINUM

DESIGN BY: J. MARTINEZ CHECKED BY: DIV: 14 DATE: May 07, 2007
 PROJECT ID: I-5005



BORDER R=9" TH=2"

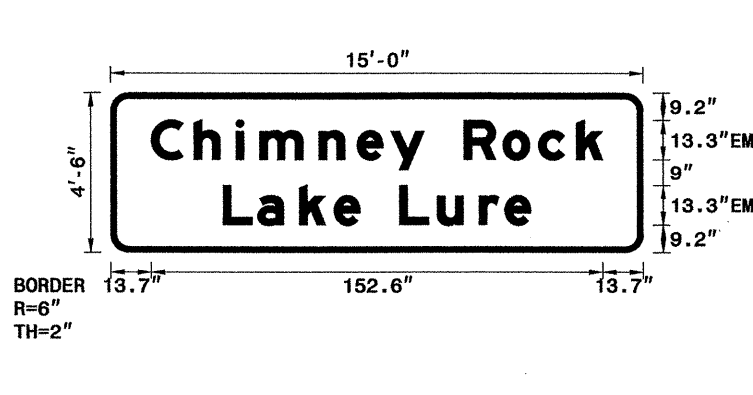
LETTER POSITIONS

Letter spacings are to start of next letter													Series/Size
													Text Length
	B	l	u	e		R	i	d	g	e			EM 2000
15.3	14.5	8	12.9	8.8	13.3	14.4	8.8	12.9	12.9	8.8	15.3		113.4
	C	o	m	m		C	o	l	l				EM 2000
16.1	13.3	13.2	20	14.7	13.3	13.3	13.2	8	2.7	16.1			111.7
	E	X	I	T		5	3						E 2000
43.2	7.1	8.6	2.8	6	12	11.4	9.7	43.2					57.6

Spacing Factor is 1 unless specified otherwise NORTH CAROLINA D.O.T. SIGN DETAIL

SIGN NUMBER: 809 TYPE: A BACKG COLOR: Green COPY COLOR: White
 QUANTITY: 1
 SIGN WIDTH: 180" HEIGHT: 54"
 TOTAL AREA: 67.5 Sq.Ft.
 BORDER TYPE: FLUSH RECESS: 0" WIDTH: 2" RADII: 6"
 NO. Z BARS: 2 LENGTH: 172.0
 MAT'L: 0.125" (3.2 mm) ALUMINUM

DESIGN BY: J. MARTINEZ CHECKED BY: DIV: 14 DATE: May 07, 2007
 PROJECT ID: I-5005




BORDER R=6" TH=2"

LETTER POSITIONS

Letter spacings are to start of next letter													Series/Size	
													Text Length	
	C	h	i	m	n	e	y		R	o	c	k	EM 2000	
13.7	14.5	14.1	8	20	12.9	11.5	11.3	13.3	13.2	12	12.9	8.8	13.7	152.6
	L	a	k	e		L	u	r	e				EM 2000	
38	11.6	14.1	11.7	8.8	13.3	12.8	14.1	8.7	8.8	38			104	

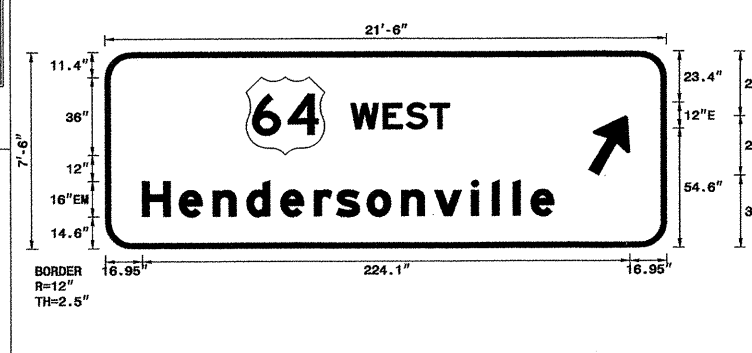
Spacing Factor is 1 unless specified otherwise NORTH CAROLINA D.O.T. SIGN DETAIL

TYPE "A" SIGNS

TIP NO. 1-5005 A SHEET NO. SIGN-10
 APPROVED: *[Signature]*
 DATE: 7/23/07
 SEAL


SIGN NUMBER: 810 BACKG COLOR: Green
 TYPE: A COPY COLOR: White
 QUANTITY: 1
 SIGN WIDTH: 258" HEIGHT: 90"
 TOTAL AREA: 161.3 Sq.Ft.
 BORDER TYPE: FLUSH
 RECESS: 0"
 WIDTH: 2.5"
 RADII: 12"
 NO. Z BARS: 3 LENGTH: 250.0
 MAT'L: 0.125" (3.2 mm) ALUMINUM

DESIGN BY: J. MARTINEZ CHECKED BY: DATE: May 07, 2007
 PROJECT ID: I-5005 DIV: 14



USE NOTES:
 1. Legend and border shall be direct applied Type III reflective sheeting.
 2. Shields shall be Type III reflective sheeting on 0.032" (0.8mm) aluminum and demountable.
 3. Background shall be Type III reflective sheeting.
 4. Center arrow(s) vertically on sign.

LETTER POSITIONS

Letter spacings are to start of next letter

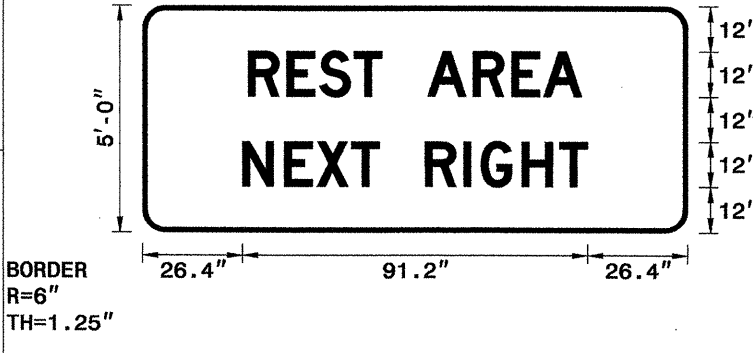
Series/Size	Text Length
E 2000	45.5
EM 2000	189.1

Spacing Factor is 1 unless specified otherwise

NORTH CAROLINA D.O.T. SIGN DETAIL

SIGN NUMBER: 812 BACKG COLOR: Blue
 TYPE: A COPY COLOR: White
 QUANTITY: 1
 SIGN WIDTH: 144" HEIGHT: 60"
 TOTAL AREA: 60.0 Sq.Ft.
 BORDER TYPE: FLUSH
 RECESS: 0"
 WIDTH: 1.25"
 RADII: 6"
 NO. Z BARS: 2 LENGTH: 196.0
 MAT'L: 0.125" (3.2 mm) ALUMINUM

DESIGN BY: J. MARTINEZ CHECKED BY: DATE: May 10, 2007
 PROJECT ID: I-5005 DIV: 14



USE NOTES:
 1. Legend and border shall be direct applied Type III reflective sheeting.
 2. Background shall be Type III reflective sheeting.

LETTER POSITIONS

Letter spacings are to start of next letter

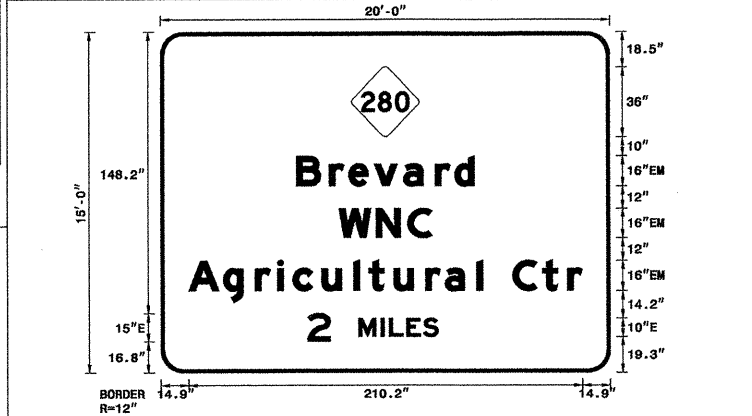
Series/Size	Text Length
D 2000	88.2
D 2000	91.2

Spacing Factor is 1 unless specified otherwise

NORTH CAROLINA D.O.T. SIGN DETAIL

SIGN NUMBER: 811 BACKG COLOR: Green
 TYPE: A COPY COLOR: White
 QUANTITY: 1
 SIGN WIDTH: 240" HEIGHT: 180"
 TOTAL AREA: 300.0 Sq.Ft.
 BORDER TYPE: FLUSH
 RECESS: 0"
 WIDTH: 2"
 RADII: 12"
 NO. Z BARS: 6 LENGTH: 232.0
 MAT'L: 0.125" (3.2 mm) ALUMINUM

DESIGN BY: J. MARTINEZ CHECKED BY: DATE: May 07, 2007
 PROJECT ID: I-5005 DIV: 14



USE NOTES:
 1. Legend and border shall be direct applied Type III reflective sheeting.
 2. Shields shall be Type III reflective sheeting on 0.032" (0.8mm) aluminum and demountable.
 3. Background shall be Type III reflective sheeting.

LETTER POSITIONS

Letter spacings are to start of next letter

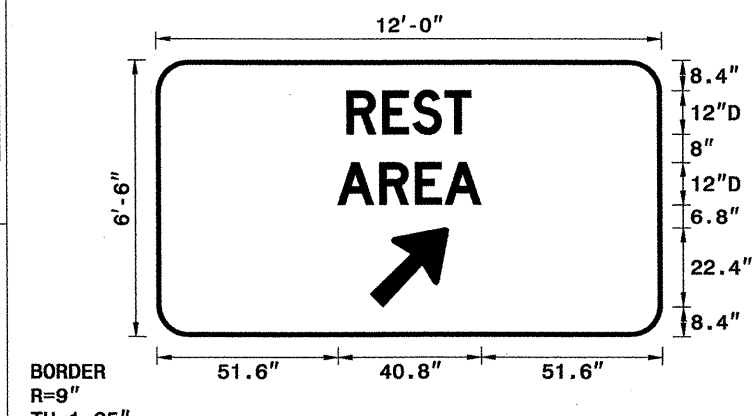
Series/Size	Text Length
EM 2000	95
EM 2000	49.6
EM 2000	210.2
E 2000	69.8

Spacing Factor is 1 unless specified otherwise

NORTH CAROLINA D.O.T. SIGN DETAIL

SIGN NUMBER: 813 BACKG COLOR: Blue
 TYPE: A COPY COLOR: White
 QUANTITY: 1
 SIGN WIDTH: 144" HEIGHT: 78"
 TOTAL AREA: 78.0 Sq.Ft.
 BORDER TYPE: FLUSH
 RECESS: 0"
 WIDTH: 1.25"
 RADII: 9"
 NO. Z BARS: 2 LENGTH: 136.0
 MAT'L: 0.125" (3.2 mm) ALUMINUM

DESIGN BY: J. MARTINEZ CHECKED BY: DATE: May 10, 2007
 PROJECT ID: I-5005 DIV: 14



USE NOTES:
 1. Legend and border shall be direct applied Type III reflective sheeting.
 2. Background shall be Type III reflective sheeting.

LETTER POSITIONS


Letter spacings are to start of next letter

Series/Size	Text Length
D 2000	35.4
D 2000	40.8

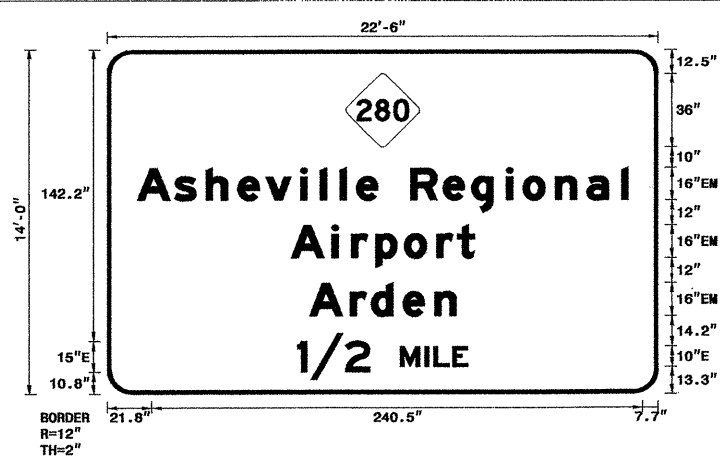
Spacing Factor is 1 unless specified otherwise

NORTH CAROLINA D.O.T. SIGN DETAIL

TYPE "A" SIGNS

TIP NO. I-5005 A	SHEET NO. SIGN-II
APPROVED: <i>[Signature]</i>	
DATE: 8/20/07	
SEAL	
	

SIGN NUMBER: 814 TYPE: A QUANTITY: 1 SIGN WIDTH: 270" HEIGHT: 168" TOTAL AREA: 315.0 Sq.Ft. BORDER TYPE: FLUSH RECESS: 0" WIDTH: 2" RADII: 12" NO. Z BARS: 4 LENGTH: 262.0	BACKG COLOR: Green COPY COLOR: White SYMBOL X Y WID HT NC243A 117 119.5 36 36	DESIGN BY: J. MARTINEZ PROJECT ID: I-5005	CHECKED BY: DIV: 14	DATE: May 07, 2007
-------------------------------------------------------------------------------------------------------------------------------------------------------------------------------------------------------------	----------------------------------------------------------------------------------------	----------------------------------------------	------------------------	--------------------



USE NOTES:
1. Legend and border shall be direct applied Type III reflective sheeting.
2. Shields shall be Type III reflective sheeting on 0.032" (0.8mm) aluminum and demountable.
3. Background shall be Type III reflective sheeting.

LETTER POSITIONS

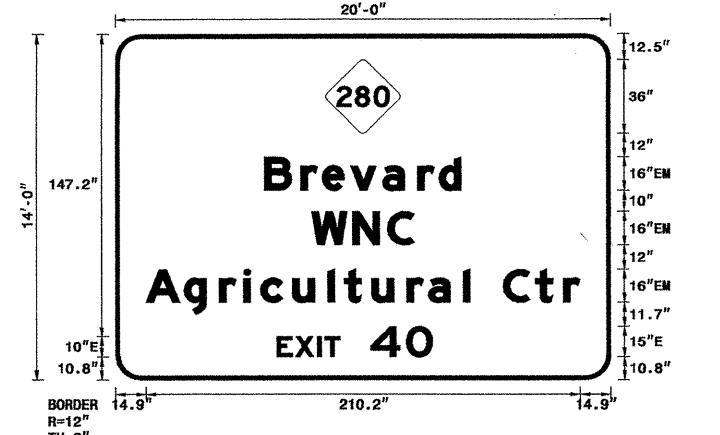
Letter spacings are to start of next letter

Letter	Series/Size	Text Length
A s h e v i l l e R e g i o n a l	EM 2000	240.5
A i r p o r t	EM 2000	89.9
A r d e n	EM 2000	72
1 / 2 M I L E	E 2000	83.5

Spacing Factor is 1 unless specified otherwise

NORTH CAROLINA D.O.T. SIGN DETAIL

SIGN NUMBER: 815 TYPE: A QUANTITY: 1 SIGN WIDTH: 240" HEIGHT: 168" TOTAL AREA: 280.0 Sq.Ft. BORDER TYPE: FLUSH RECESS: 0" WIDTH: 2" RADII: 12" NO. Z BARS: 0 LENGTH: 232.0	BACKG COLOR: Green COPY COLOR: White SYMBOL X Y WID HT NC243A 102 119.5 36 36	DESIGN BY: J. MARTINEZ PROJECT ID: I-5005	CHECKED BY: DIV: 14	DATE: May 07, 2007
-------------------------------------------------------------------------------------------------------------------------------------------------------------------------------------------------------------	----------------------------------------------------------------------------------------	----------------------------------------------	------------------------	--------------------



USE NOTES:
1. Legend and border shall be direct applied Type III reflective sheeting.
2. Shields shall be Type III reflective sheeting on 0.032" (0.8mm) aluminum and demountable.
3. Background shall be Type III reflective sheeting.

LETTER POSITIONS

Letter spacings are to start of next letter

Letter	Series/Size	Text Length
B r e v a r d	EM 2000	95
W N C	EM 2000	49.6
A g r i c u l t u r a l C t r	EM 2000	210.2
E X I T 4 0	E 2000	75.3

Spacing Factor is 1 unless specified otherwise

NORTH CAROLINA D.O.T. SIGN DETAIL

TYPE "A" SIGNS

405 QUANTITY REQ'D .1.

**SLOWER
TRAFFIC
KEEP
RIGHT**

48 X 60
R4-3

TWO "U" POSTS PER SIGN

464 QUANTITY REQ'D .2.

OFFICIAL
TRUCK WEIGH STATION
STATE OF NORTH CAROLINA

84 X 42
DB-4

TWO "U" POSTS PER SIGN

465 QUANTITY REQ'D .2.

TO CALL
HIGHWAY PATROL
ON
CELL PHONE
DIAL
*HP

48 X 42
M12-15

TWO "U" POSTS PER SIGN

TIP NO. SHEET NO.

I-5005 A SIGN-12


APPROVED: *Atman I. Alquodini*

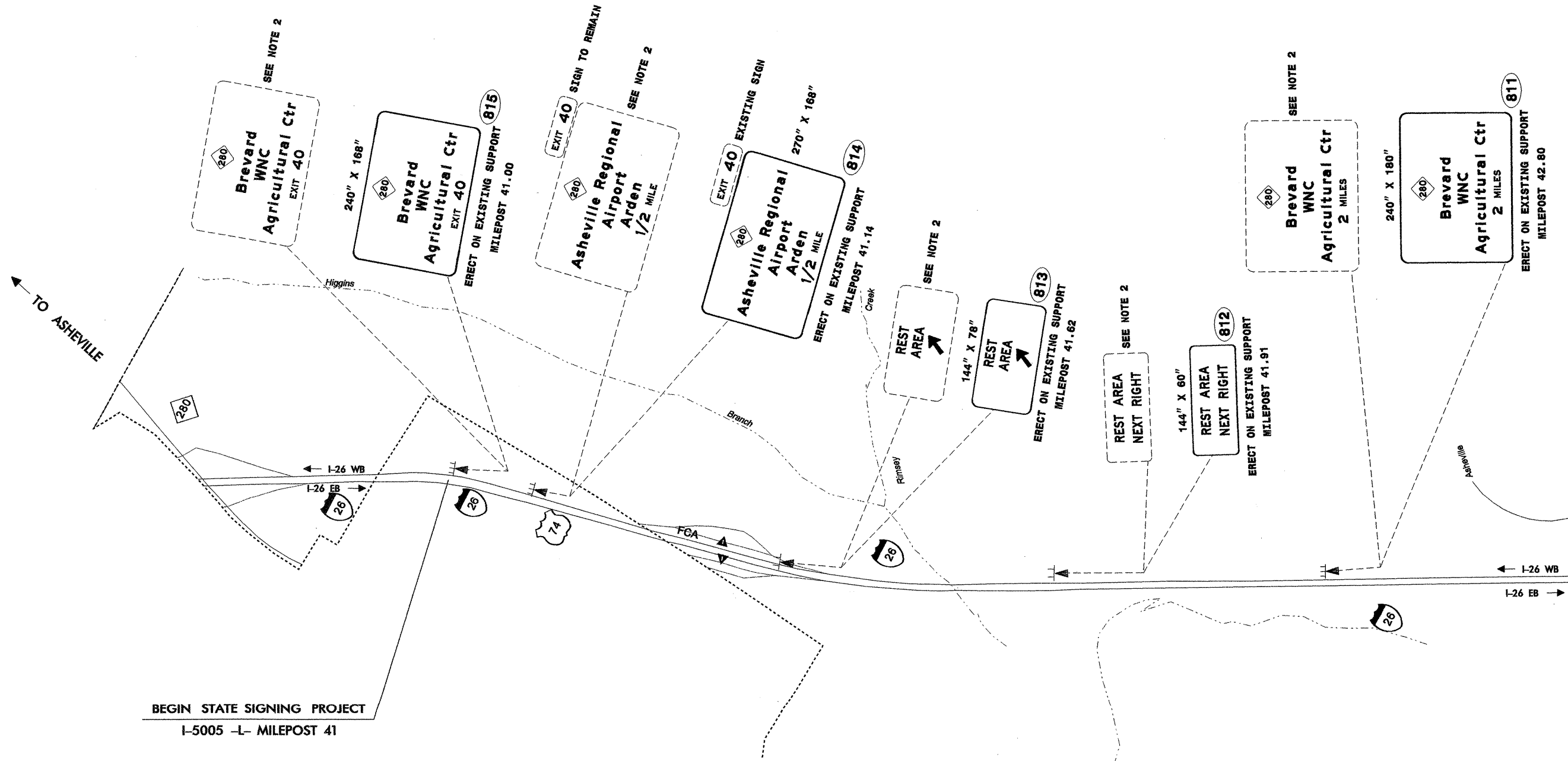
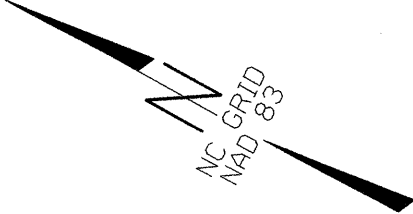
DATE: 7/23/07

SEAL

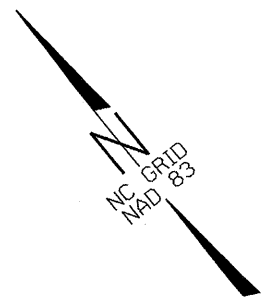
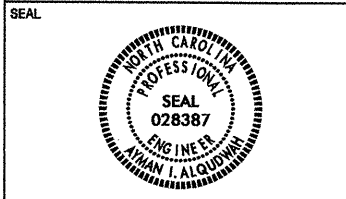


TYPE "E" SIGNS

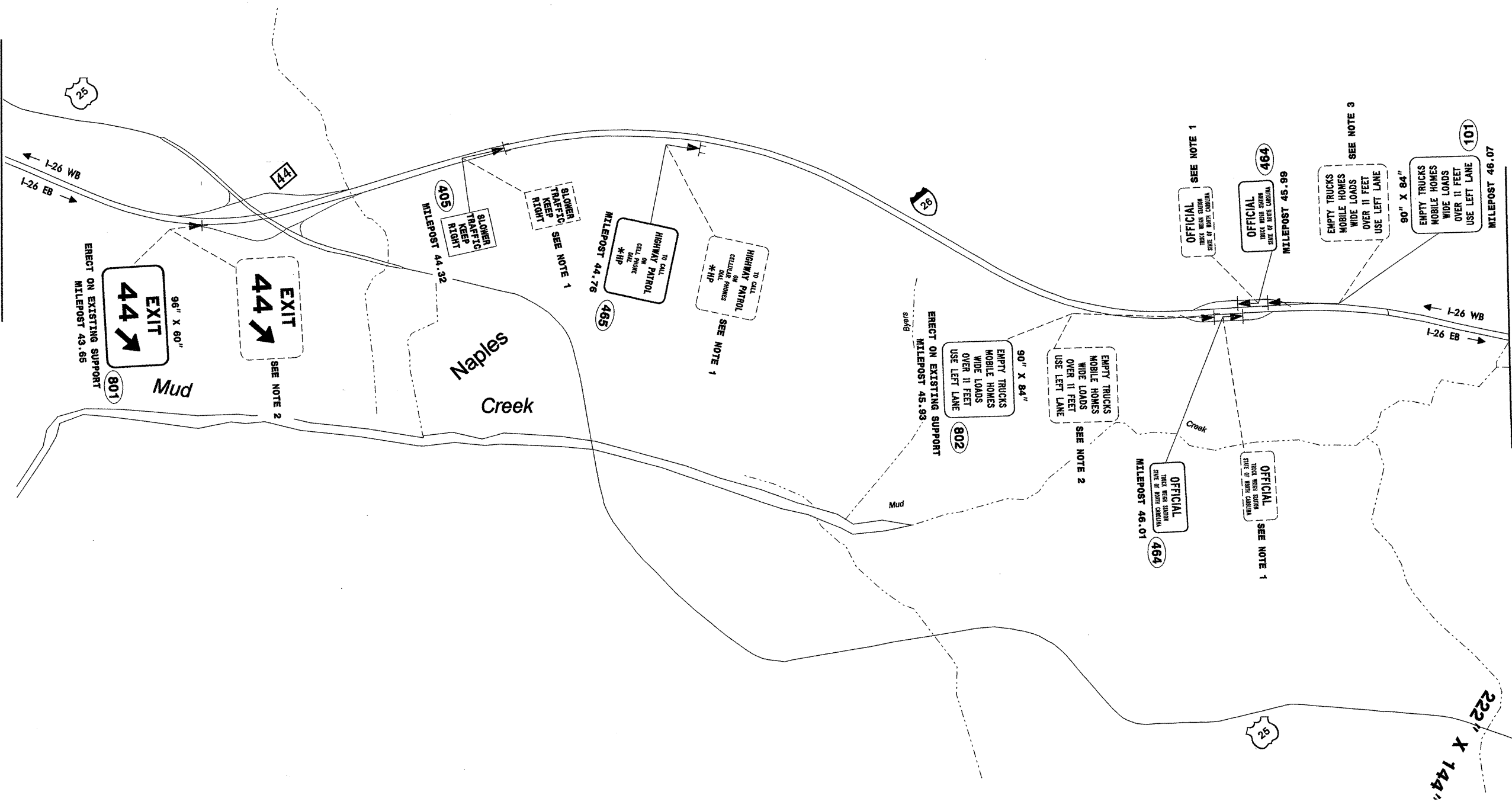
TIP NO. I-5005 A	SHEET NO. SIGN-13
APPROVED: <i>[Signature]</i>	
DATE: 8/20/07	
SEAL	
	



EXISTING/PROPOSED SIGNS



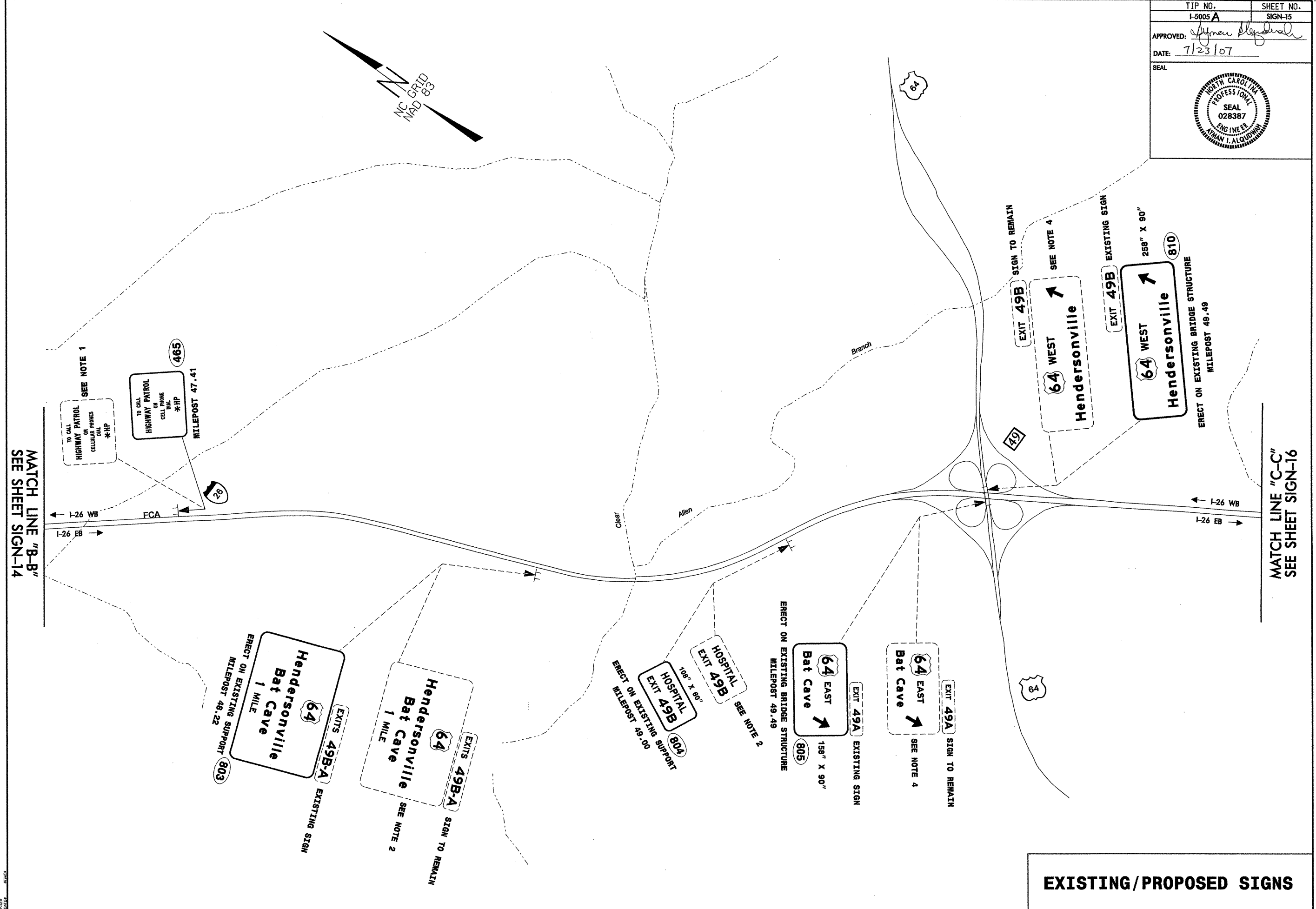
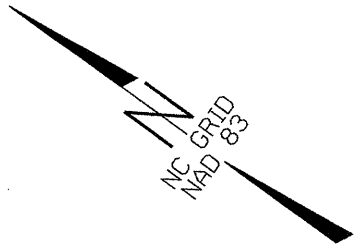
MATCH LINE "A-A"
SEE SHEET SIGN-13



MATCH LINE "B-B"
SEE SHEET SIGN-15

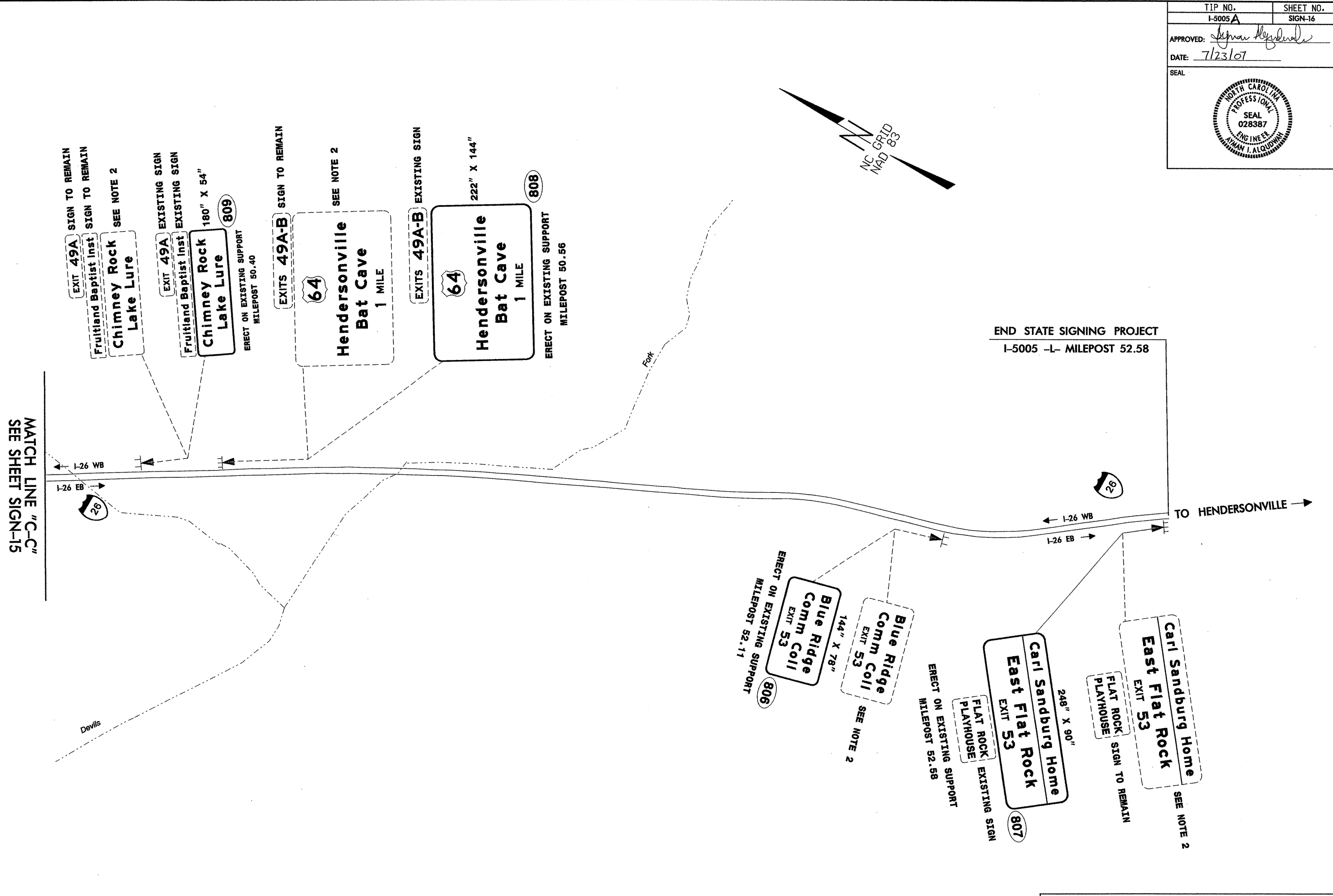
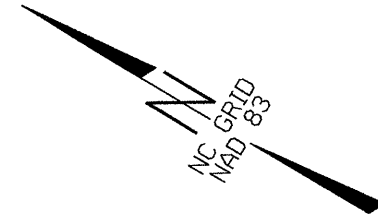
EXISTING/PROPOSED SIGNS

TIP NO. I-5005 A	SHEET NO. SIGN-15
APPROVED: <i>Ayman Alqodvi</i>	
DATE: 7/23/07	
SEAL	



EXISTING/PROPOSED SIGNS

DATE: 7/23/07



EXISTING/PROPOSED SIGNS

FILES
DATE